

Tables

Table DQ.1: Age distribution of household population
Single-year distribution of household population by sex (weighted), Serbia, 2005

		Male		Female	
		Number	Percent	Number	Percent
Age	0	140	1,0	140	1,0
	1	161	1,2	144	1,0
	2	160	1,2	159	1,1
	3	152	1,1	146	1,0
	4	153	1,1	158	1,1
	5	206	1,5	163	1,1
	6	179	1,3	169	1,2
	7	190	1,4	163	1,1
	8	140	1,0	142	1,0
	9	181	1,3	165	1,1
	10	173	1,3	176	1,2
	11	170	1,2	173	1,2
	12	184	1,3	181	1,2
	13	163	1,2	133	,9
	14	159	1,2	180	1,2
	15	159	1,2	185	1,3
	16	148	1,1	148	1,0
	17	142	1,0	166	1,1
	18	167	1,2	145	1,0
	19	149	1,1	188	1,3
	20	178	1,3	170	1,2
	21	159	1,2	195	1,3
	22	171	1,3	185	1,3
	23	161	1,2	155	1,1
	24	200	1,5	194	1,3
	25	187	1,4	182	1,3
	26	195	1,4	181	1,2
	27	168	1,2	217	1,5
	28	195	1,4	203	1,4
	29	188	1,4	230	1,6
	30	198	1,5	215	1,5
	31	225	1,7	210	1,4
	32	206	1,5	224	1,5
	33	205	1,5	180	1,2
	34	193	1,4	224	1,5
	35	200	1,5	182	1,3
	36	208	1,5	192	1,3
	37	222	1,6	166	1,1
	38	184	1,4	205	1,4
	39	174	1,3	157	1,1

40	163	1,2	176	1,2
41	195	1,4	171	1,2
42	173	1,3	170	1,2
43	180	1,3	180	1,2
44	168	1,2	204	1,4
45	179	1,3	185	1,3
46	169	1,2	176	1,2
47	194	1,4	171	1,2
48	159	1,2	209	1,4
49	188	1,4	162	1,1
50	211	1,5	233	1,6
51	234	1,7	241	1,7
52	211	1,5	254	1,7
53	229	1,7	270	1,9
54	213	1,6	191	1,3
55	229	1,7	230	1,6
56	212	1,6	239	1,6
57	186	1,4	219	1,5
58	170	1,2	180	1,2
59	132	1,0	163	1,1
60	129	,9	132	,9
61	150	1,1	143	1,0
62	146	1,1	138	,9
63	138	1,0	166	1,1
64	140	1,0	160	1,1
65	178	1,3	172	1,2
66	153	1,1	212	1,5
67	124	,9	165	1,1
68	141	1,0	159	1,1
69	149	1,1	159	1,1
70	126	,9	175	1,2
71	127	,9	178	1,2
72	117	,9	147	1,0
73	121	,9	146	1,0
74	103	,8	178	1,2
75	130	1,0	130	,9
76	90	,7	111	,8
77	72	,5	102	,7
78	89	,7	112	,8
79	54	,4	112	,8
80+	237	1,7	421	2,9
DK/missing	11	,1	14	,1
Total	13614	100,0	14549	100,0

Tables

Table DQ.2: Age distribution of eligible and interviewed women
Household population of women age 10-54, interviewed women age 15-49, and percentage of eligible women who were interviewed (weighted), by five-year age group, Serbia, 2005

		Household population of women age 10-54	Interviewed women age 15-49		Percentage of eligible women interviewed
		Number	Number	Percent	Number
Age	10-14	843	.	.	.
	15-19	831	766	12,4	92,1
	20-24	900	807	13,1	89,7
	25-29	1013	963	15,6	95,0
	30-34	1051	1031	16,7	98,1
	35-39	902	877	14,2	97,2
	40-44	902	872	14,1	96,7
	45-49	904	864	14,0	95,5
	50-54	1190	.	.	.
15-49		6504	6180	100,0	95,0

The output file is weighted by chweight

Tables

Table DQ.3: Age distribution of eligible and interviewed under-5s
Household population of children age 0-7, children whose mothers/caratekers were interviewed and percentage of under-5 children whose mothers/caretakers were interviewed (weighted), by five-year age group, Serbia, 2005

		Household population of children age 0-7	Interviewed children age 0-4		Percentage of eligible children interviewed
		Number	Number	Percent	Number
Age	0	280	275	18,4	98,2
	1	305	299	20,0	98,2
	2	320	319	21,3	99,8
	3	299	296	19,8	99,2
	4	311	305	20,4	97,9
	5	369	.	.	.
	6	348	.	.	.
	7	353	.	.	.
0-4		1514	1494	100,0	98,7

The output file is weighted by chweight

Tables

Table DQ.4: Age distribution of under-5 children
Age distribution of under-5 children by 3-month groups (weighted), Serbia, 2005

		Male		Female		Total	
		Number	Percent	Number	Percent	Number	Percent
Age in months	0-2	57	3,0	58	3,1	115	3,0
	3-5	110	5,7	91	4,9	201	5,3
	6-8	78	4,1	95	5,1	173	4,6
	9-11	82	4,3	83	4,5	165	4,4
	12-14	92	4,8	93	5,0	185	4,9
	15-17	125	6,5	103	5,5	228	6,0
	18-20	105	5,5	84	4,5	190	5,0
	21-23	86	4,5	84	4,5	170	4,5
	24-26	116	6,1	94	5,0	210	5,6
	27-29	105	5,5	109	5,8	213	5,6
	30-32	101	5,3	96	5,2	197	5,2
	33-35	87	4,5	95	5,1	182	4,8
	36-38	96	5,0	104	5,6	200	5,3
	39-41	93	4,9	77	4,1	170	4,5
	42-44	98	5,1	94	5,1	192	5,1
	45-47	96	5,0	96	5,2	192	5,1
	48-50	102	5,3	108	5,8	211	5,6
	51-53	91	4,8	89	4,8	180	4,8
	54-56	96	5,0	93	5,0	189	5,0
	57-59	101	5,3	114	6,1	215	5,7
Total		1917	100,0	1860	100,0	3777	100,0

>Command line: 7739 Current case: 1 Current splitfile group: 1

>Command line: 7744 Current case: 1 Current splitfile group: 1

>Command line: 7752 Current case: 1 Current splitfile group: 1

>Command line: 7757 Current case: 1 Current splitfile group: 1

>Command line: 7739 Current case: 2 Current splitfile group: 1

>Command line: 7744 Current case: 2 Current splitfile group: 1

>Command line: 7752 Current case: 2 Current splitfile group: 1

>Command line: 7757 Current case: 2 Current splitfile group: 1

>Command line: 7739 Current case: 3 Current splitfile group: 1

>Command line: 7744 Current case: 3 Current splitfile group: 1

Tables

Warnings

A division by zero has been attempted on the indicated command. The result has been set to the system-missing value.

A division by zero has been attempted on the indicated command. The result has been set to the system-missing value.

A division by zero has been attempted on the indicated command. The result has been set to the system-missing value.

A division by zero has been attempted on the indicated command. The result has been set to the system-missing value.

A division by zero has been attempted on the indicated command. The result has been set to the system-missing value.

A division by zero has been attempted on the indicated command. The result has been set to the system-missing value.

A division by zero has been attempted on the indicated command. The result has been set to the system-missing value.

A division by zero has been attempted on the indicated command. The result has been set to the system-missing value.

A division by zero has been attempted on the indicated command. The result has been set to the system-missing value.

The limit of MXWARNS warnings in this data pass has been printed. Further warnings have been suppressed.

Table DQ.5: Heaping on ages and periods
Age and period ratios at boundaries of eligibility by type of information collected (Household questionnaire, weighted), Serbia, 2005

	Age and period ratios		Total Male
	Male	Female	
1	1,05	,97	1,01
2	1,01	1,07	1,04
3	,98	,95	,96
4	,90	1,02	,95
5	1,15	1,00	1,08
6	,93	1,02	,98
.	.	.	.
8	,82	,91	,86
9	1,10	1,02	1,06
10	,99	1,03	1,01
.	.	.	.
13	,97	,81	,89
14	,99	1,08	1,04
15	1,02	1,08	1,06
16	,99	,89	,94
17	,93	1,08	1,01

18	,93	1,00	,96
.	.	.	.
23	,91	,87	,89
24	1,10	1,10	1,10
25	,96	,98	,97
.	.	.	.
48	,88	1,16	1,02
49	1,01	,80	,90
50	1,00	1,10	1,05

Age in household questionnaire

Tables

Table DQ.5: Heaping on ages and periods
Age and period ratios at boundaries of eligibility by type of information collected (Women's questionnaire, weighted), Serbia, 2005

	Age and period ratios
	Female
23	,87
24	1,08
25	1,01

Age in women's questionnaire

Tables

Table DQ.5: Heaping on ages and periods
Age and period ratios at boundaries of eligibility by type of information collected (Women's questionnaire, weighted), Serbia, 2005

	Age and period ratios
	Female
6-11	,97
12-17	1,11
18-23	,92
24-29	1,09
30-35	,96

Months since last birth in women's questionnaire

Tables

Table DQ.6: Percentage of observations missing information for selected questions and indicators (Women's questionnaire, weighted), Serbia, 2005

	Percent with missing information	Number
Month of birth only	,2	7516
Month and year of birth	,0	7516
Month of first birth only	6,3	78
Month and year of first birth	3,7	78
Completed years since first birth	10,9	3
Month of last birth only	,2	4897
Month and year of last birth	,1	4897
Month of first marriage only	7,8	5306
Month and year of first marriage	4,8	5306
Age at first marriage/union	2,6	5306
Age at first intercourse	3,0	1916
Time since last intercourse	6,2	1006

Tables

Table DQ.6: Percentage of observations missing information for selected questions and indicators (Under-5 questionnaire, weighted), Serbia, 2005

	Percent with missing information	Number
Month of birth under-5 only	,1	3777
Month and year of birth under-5	,0	3777
Weight	6,5	3777
Height	7,9	3777
Height or weight	8,0	3777

Tables

Table DQ.7: Presence of mother in the household and the person interviewed for the under-5 questionnaire
Distribution of children under five by whether the mother lives in the same household, and the person interviewed for the under-5 questionnaire (weighted), Serbia, 2005

	Mother in the household	Mother not in the household	Total	Number of children aged 0-4 years
--	-------------------------	-----------------------------	-------	-----------------------------------

		Mother interviewed	Father interviewed	Father interviewed	Other adult female interviewed	Other adult male interviewed	Mother interviewed	Father interviewed
Age	0	99,7	,0	,3	,0	,0	100,0	280
	1	99,5	,0	,2	,3	,0	100,0	305
	2	98,9	,3	,4	,4	,0	100,0	320
	3	98,2	,2	1,0	,6	,0	100,0	299
	4	98,7	,0	,7	,6	,0	100,0	311
Total		99,0	,1	,5	,4	,0	100,0	1514

Tables

Table DQ.8: School attendance by single age
Distribution of household population age 5-24 by educational level and grade attended in the current year, Serbia, 2005

		Preschool/kin dergarten	Primary							Secondary				Higher	University	Non-standard curriculum	DK	Not attending school	Total		Total
			1	2	3	4	5	6	7	8	1	2	3	4							
Age	5	50,9	,2	,0	,0	,0	,0	,0	,0	,0	,0	,0	,0	,0	,0	,0	,0	,0	49,0	100,0	369
	6	67,9	18,2	,2	,0	,0	,0	,0	,0	,0	,0	,0	,0	,0	,0	,0	,0	,0	13,7	100,0	348
	7	3,0	71,3	23,0	,2	,4	,0	,0	,0	,0	,0	,0	,0	,0	,0	,0	,0	,0	2,2	100,0	353
	8	,0	1,4	79,6	18,0	,2	,0	,0	,0	,0	,0	,0	,0	,0	,0	,0	,0	,0	,8	100,0	282
	9	,0	,0	5,0	83,6	10,1	,4	,0	,0	,0	,0	,0	,0	,0	,0	,0	,0	,0	,8	100,0	347
	10	,0	,2	,3	5,0	82,5	11,2	,0	,4	,0	,0	,0	,0	,0	,0	,0	,1	,0	,3	100,0	349
	11	,0	,2	,1	,6	5,2	82,7	9,4	1,0	,4	,0	,0	,0	,0	,0	,0	,1	,0	,3	100,0	343
	12	,0	,0	,2	,1	,9	5,9	76,4	15,4	,4	,0	,0	,0	,0	,0	,0	,1	,0	,6	100,0	365
	13	,0	,0	,0	,1	,2	1,2	4,9	81,7	10,0	,0	,0	,5	,0	,0	,0	,2	,0	1,2	100,0	296
	14	,0	,0	,0	,2	,1	,0	,6	5,4	78,6	11,3	1,3	,4	,0	,0	,0	,0	,0	2,0	100,0	339
	15	,0	,0	,0	,0	,0	,1	,0	,3	1,9	80,7	12,3	,0	,0	,0	,0	,0	,0	4,6	100,0	344
	16	,0	,0	,0	,0	,0	,0	,0	,0	1,3	7,5	65,3	14,4	,0	,0	,0	,1	,0	11,3	100,0	296
	17	,0	,0	,0	,5	,0	,0	,0	,0	,0	1,1	7,9	64,5	12,9	,0	,5	,0	,0	12,6	100,0	307
	18	,0	,0	,0	,0	,0	,0	,0	,0	,0	,5	,2	,0	8,2	46,2	3,5	4,9	,0	36,6	100,0	312
	19	,0	,0	,0	,0	,0	,0	,0	,0	,0	,4	,5	1,0	4,5	10,6	36,5	,0	,0	46,5	100,0	337
	20	,0	,0	,0	,0	,0	,0	,0	,0	,0	,0	,0	,0	1,0	5,8	33,2	,0	,0	60,0	100,0	348
	21	,0	,0	,0	,0	,0	,0	,0	,0	,0	,0	,0	,0	1,0	8,8	27,1	,0	,0	63,0	100,0	354
	22	,0	,0	,0	,0	,0	,0	,0	,0	,0	,0	,4	,0	,0	6,3	29,6	,0	,0	63,7	100,0	356
	23	,0	,0	,0	,0	,0	,0	,0	,0	,0	,0	,0	,0	,2	5,2	23,4	,0	,0	71,3	100,0	316
	24	,0	,0	,0	,0	,0	,0	,0	,0	,0	,0	,0	,4	,0	3,2	12,0	,4	,1	83,9	100,0	395
Total		6,4	4,8	4,8	5,4	5,1	5,2	4,9	4,8	4,6	5,1	3,9	4,1	3,1	2,2	8,5	,1	,0	27,1	100,0	6756

Tables

Table DQ.9: Sex ratio at birth among children ever born and living
Sex ratio at birth among children ever born, children living, and deceased children by age of women (weighted), Serbia - Roma women from Roma settlements, 2005

		Number of sons ever born	Number of daughters ever born	Sex ratio of children ever born	Number of sons living	Number of daughters living	Sex ratio of living children	Number of deceased sons	Number of deceased daughters	Sex ratio of deceased children	Number of women
Age	15-19	82	74	1,12	81	71	1,15	1	3	,31	378
	20-24	225	230	,98	219	223	,98	6	7	,88	297
	25-29	403	355	1,14	387	349	1,11	16	6	2,93	301
	30-34	417	394	1,06	404	383	1,05	13	10	1,22	279
	35-39	419	381	1,10	381	350	1,09	38	31	1,23	246
	40-44	401	367	1,09	382	345	1,11	19	22	,88	238
	45-49	279	277	1,01	249	268	,93	30	10	3,15	187
Total		2226	2078	1,07	2103	1990	1,06	123	88	1,41	1927

Tables

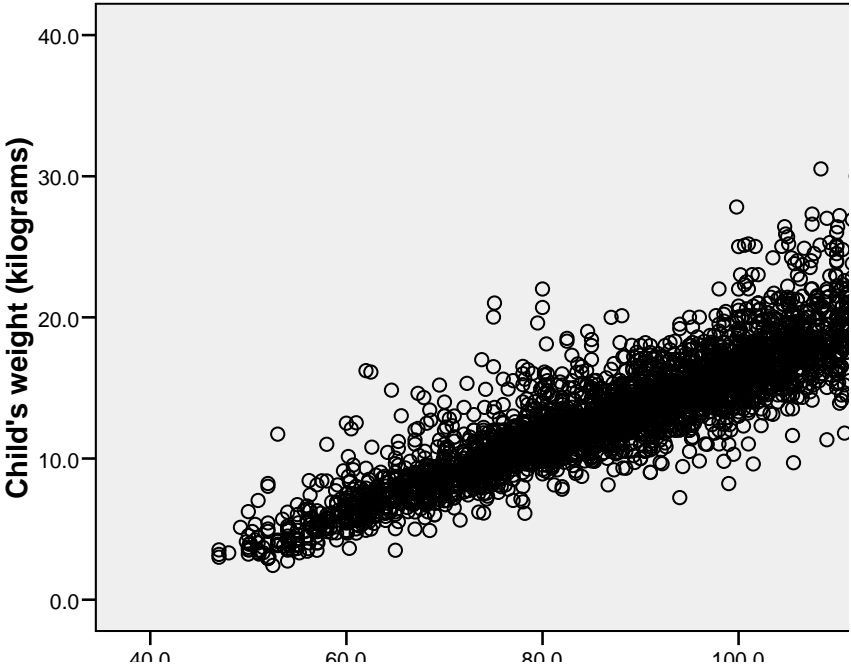
Table DQ.10: Distribution of women by time since last birth
Distribution of women aged 15-49 years with at least one live birth (weighted), by months since last birth, Serbia, 2005

		Number	Percent
Months since last birth	0	13	1,3
	1	13	1,4
	2	28	2,9
	3	33	3,4
	4	30	3,1
	5	29	3,0
	6	23	2,4
	7	30	3,2
	8	27	2,8
	9	27	2,8
	10	18	1,9
	11	34	3,5
	12	33	3,4
	13	27	2,8
	14	25	2,6
	15	38	4,0
	16	39	4,0
	17	25	2,7
	18	25	2,6
	19	25	2,7
	20	32	3,4
	21	22	2,3
	22	22	2,3
	23	32	3,3
	24	25	2,6
	25	31	3,3
	26	27	2,9
	27	27	2,8
	28	31	3,3

	29	28	2,9
	30	27	2,9
	31	24	2,5
	32	24	2,5
	33	23	2,4
	34	19	2,0
	35	20	2,1
Total		959	100,0

Graph

Figure 1. Scatterplot of weight (Y-axis) by height (x-axis)
2005



Graph

Figure 2. Scatterplot of weights of children by age in m
Serbia, 2005

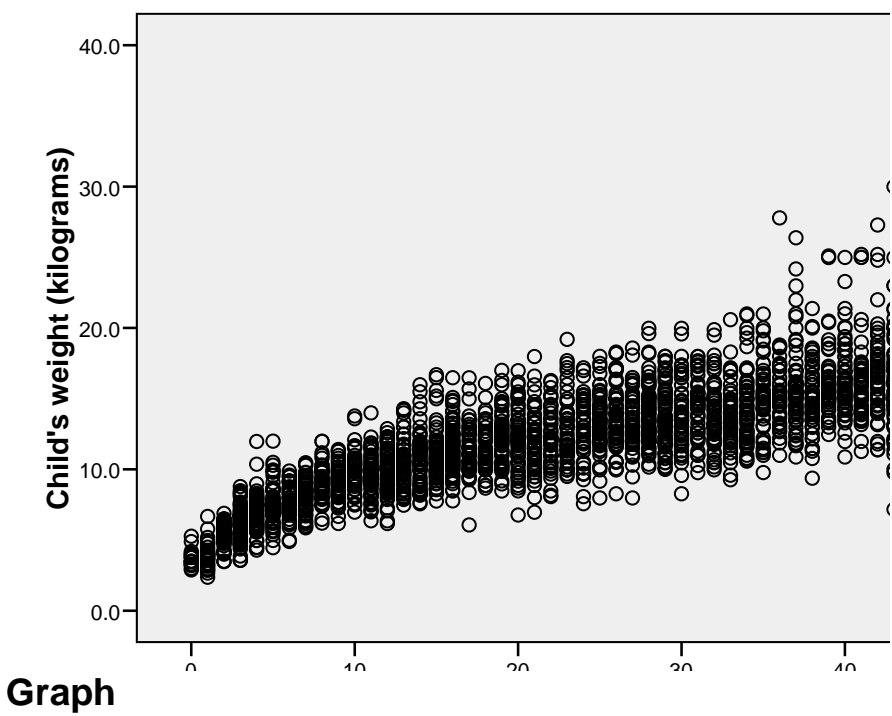
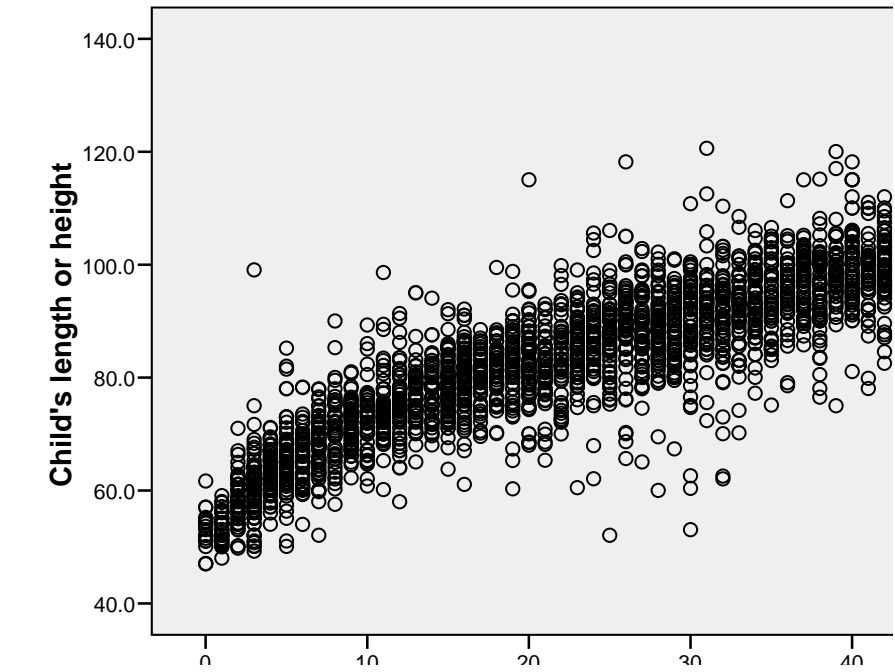


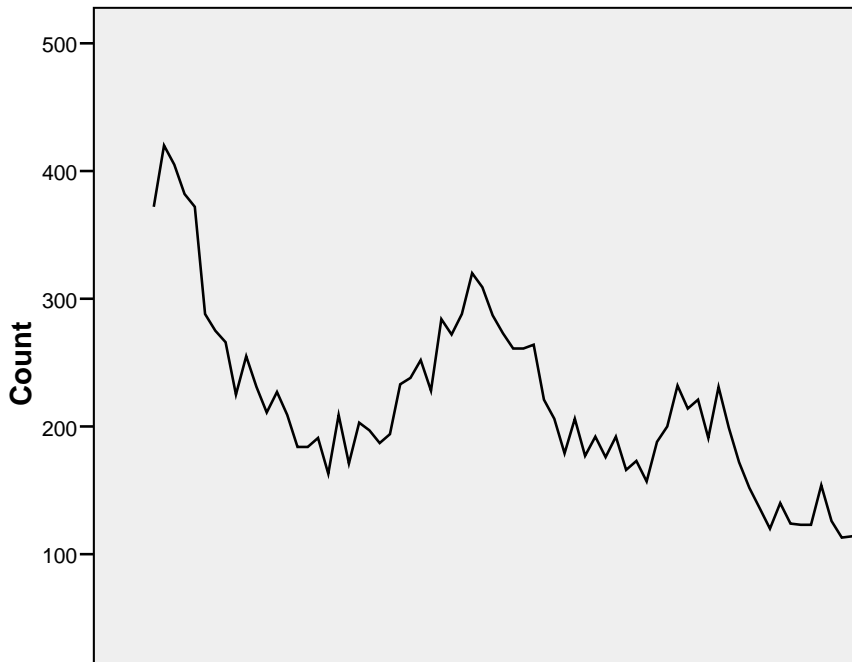
Figure 3. Scatterplot of heights of children by age in m
Serbia, 2005



Graph

D:\Ivana\!Razmena\# Projekti\2005\!!!MICS\BAZE#MICS\SRBIJA\h1.sav

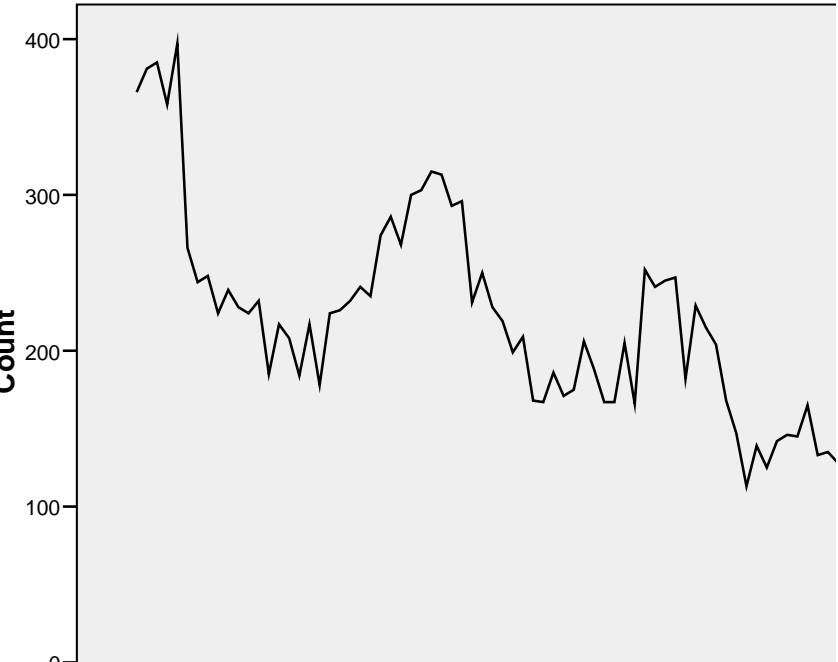
Figure 4. Number of male household population (Y-axis: axis) (unweighted), Serbia, 2005



Graph

D:\Ivana\!Razmena\# Projekti\2005\!!!MICS\BAZE#MICS\SRBIJA\h1.sav

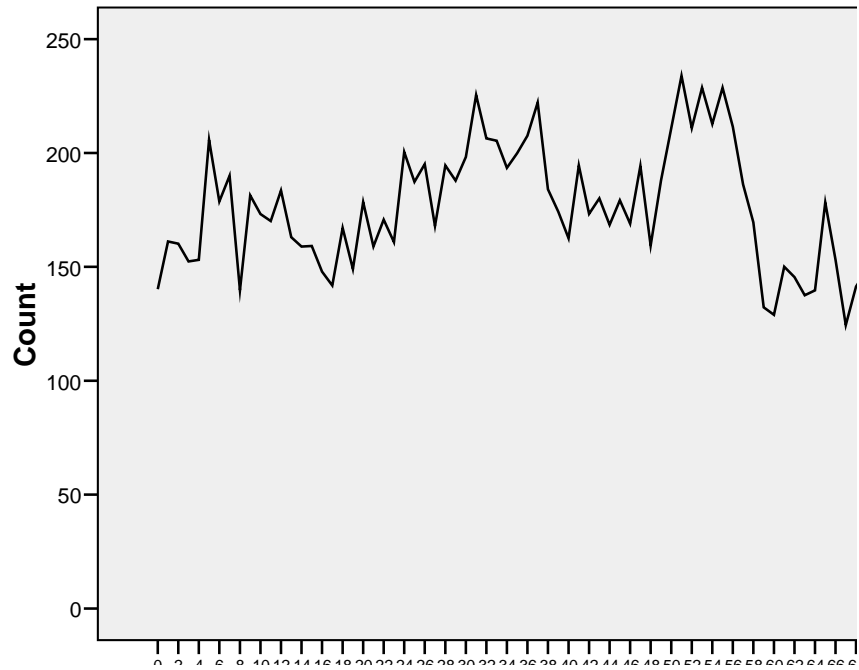
Figure 5. Number of female household population (Y-axis) (unweighted), Serbia, 2005



Graph

D:\Ivana\!Razmena\# Projekti\2005\!!!MICS\BAZE#MICS\SRBIJA\h1.sav

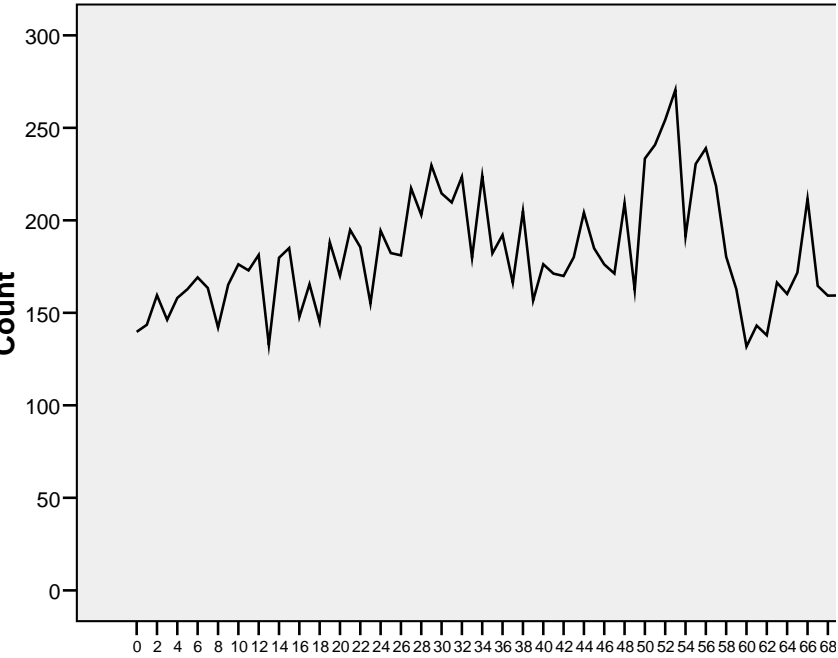
Figure 4. Number of male household population (Y-axis: axis) (weighted), Serbia, 2005



Graph

D:\Ivana\!Razmena\# Projekti\2005\!!!MICS\BAZE#MICS\SRBIJA\h1.sav

Figure 5. Number of female household population (Y-axis) (weighted), Serbia, 2005



XGraph

D:\Ivana\!Razmena\# Projekti\2005\!!!MICS\BAZE#MICS\SRBIJA\hl.sav

Figure 6. Population pyramid, Serbia, 2

