

Annex C

FLOWCHART OF QUESTIONNAIRE

Cover page and Section 1 (General information)

**Cover page
And flap**

Season, PSU code, household ID, district, VDC/municipality, ward, sub-ward, Village/
Tole, Name & Religion of Household head, Team no., Household list, total household
members, member aged 5 & over, date of interview,

Section 1 Household Information

1, 2, 3,
4, 5, 6

Ownership of dwelling, Source of drinking water, Main fuel for
cooking, Lighting fuel, Type of toilet, Availability and no. of
facility.

7

Agriculture land?

Code 2 (No)

Code 1 (Yes)

8

Unit & Area of different operated land

Section 2: General information

General information

9, 10, 11, 12
13, 14, 15

Sex, Age, Ethnicity, Relationship,
Marital status (10+), Citizenship,
and Months lived here

16

Household member?

Code 2 (No)

END

Code 1 (Yes)

17

Born in this Mun/VDC?

Code 1 (Yes)

18

Birth district

Code \geq 81
(Foreign)

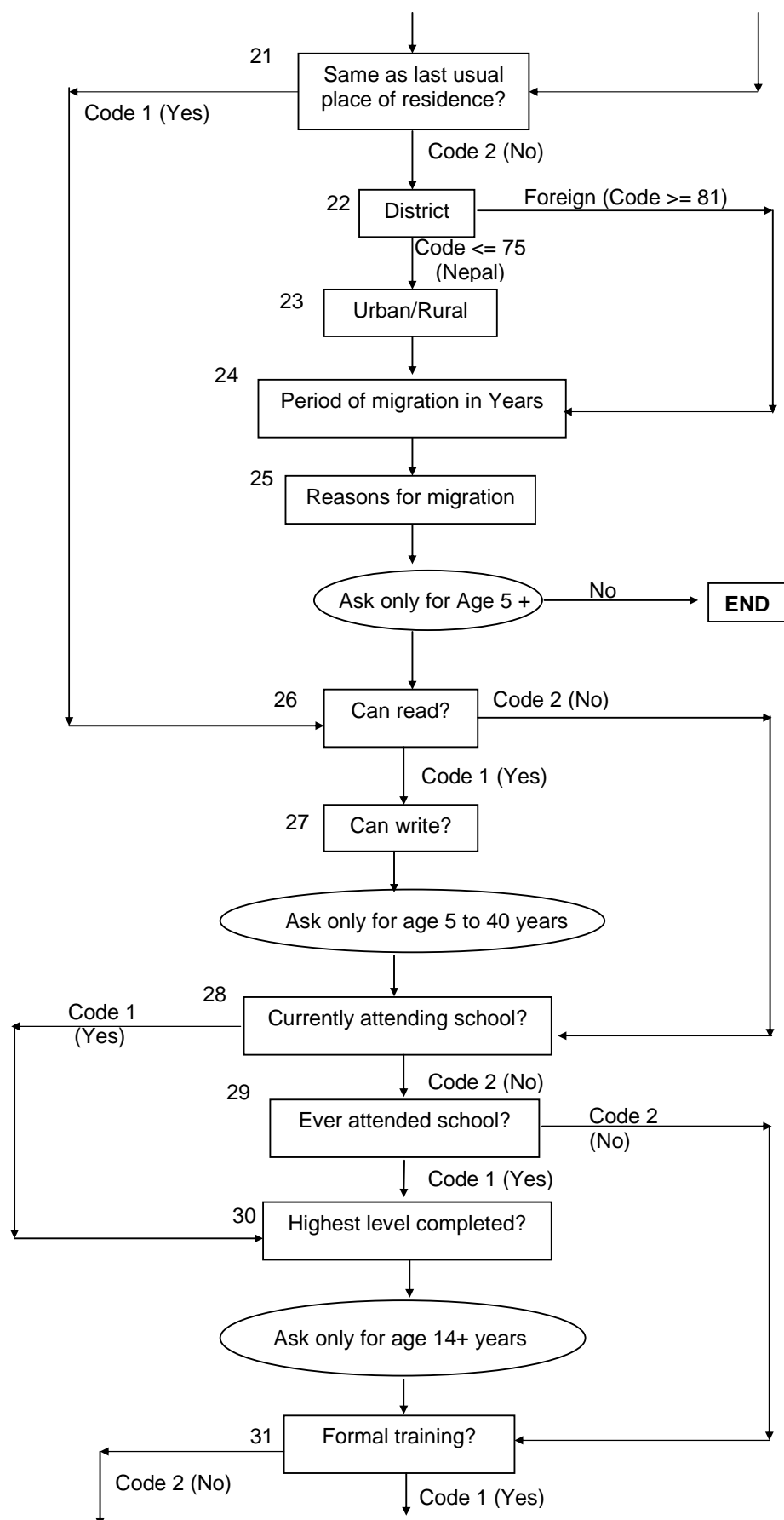
Code \leq 75
(Nepal)

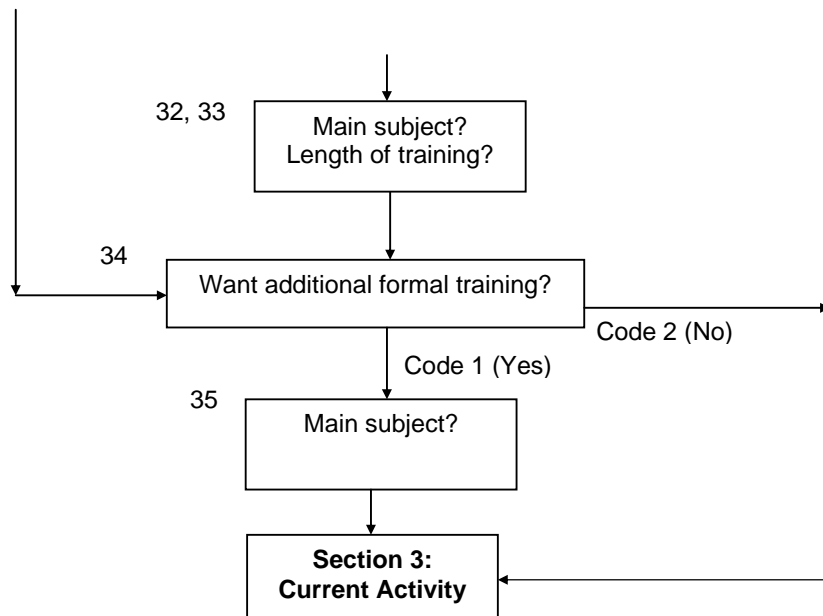
19

Urban/Rural?

20

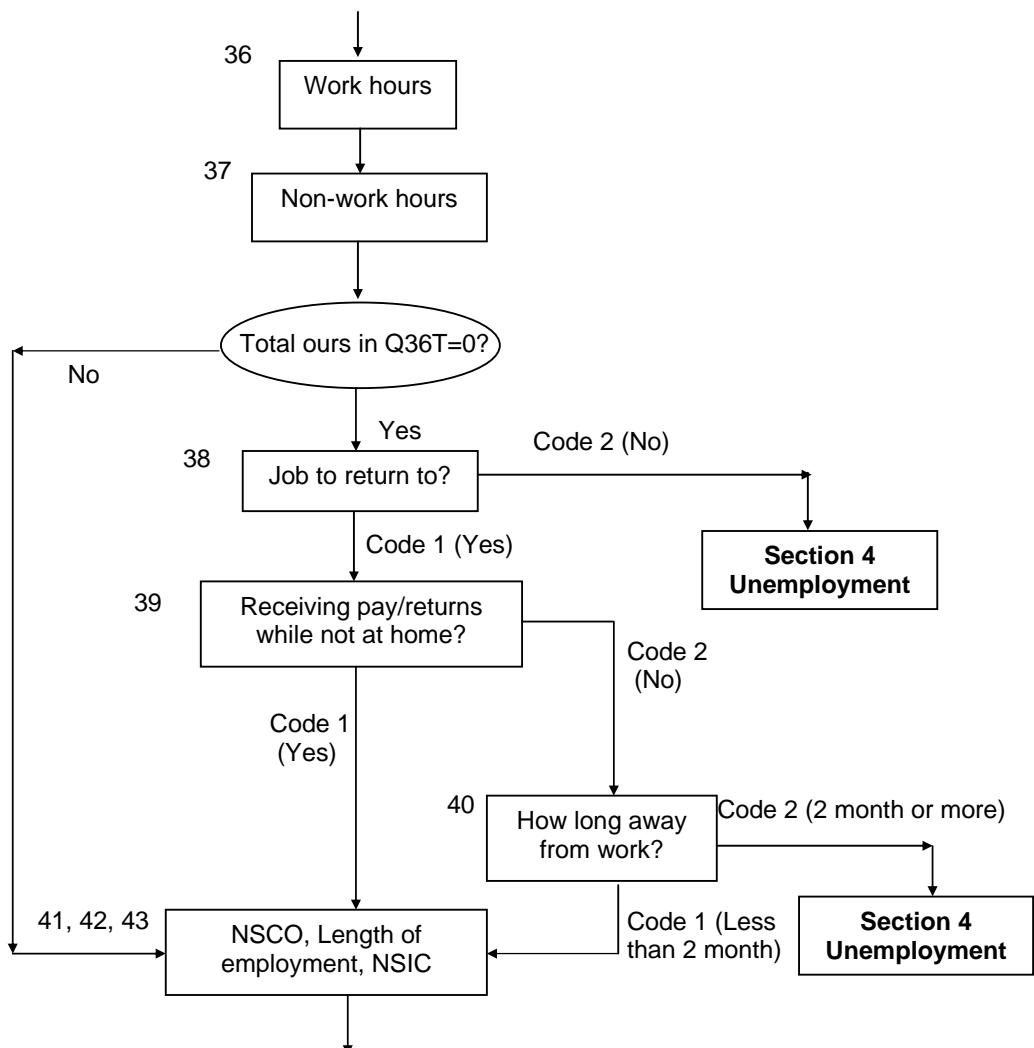
Main reason?

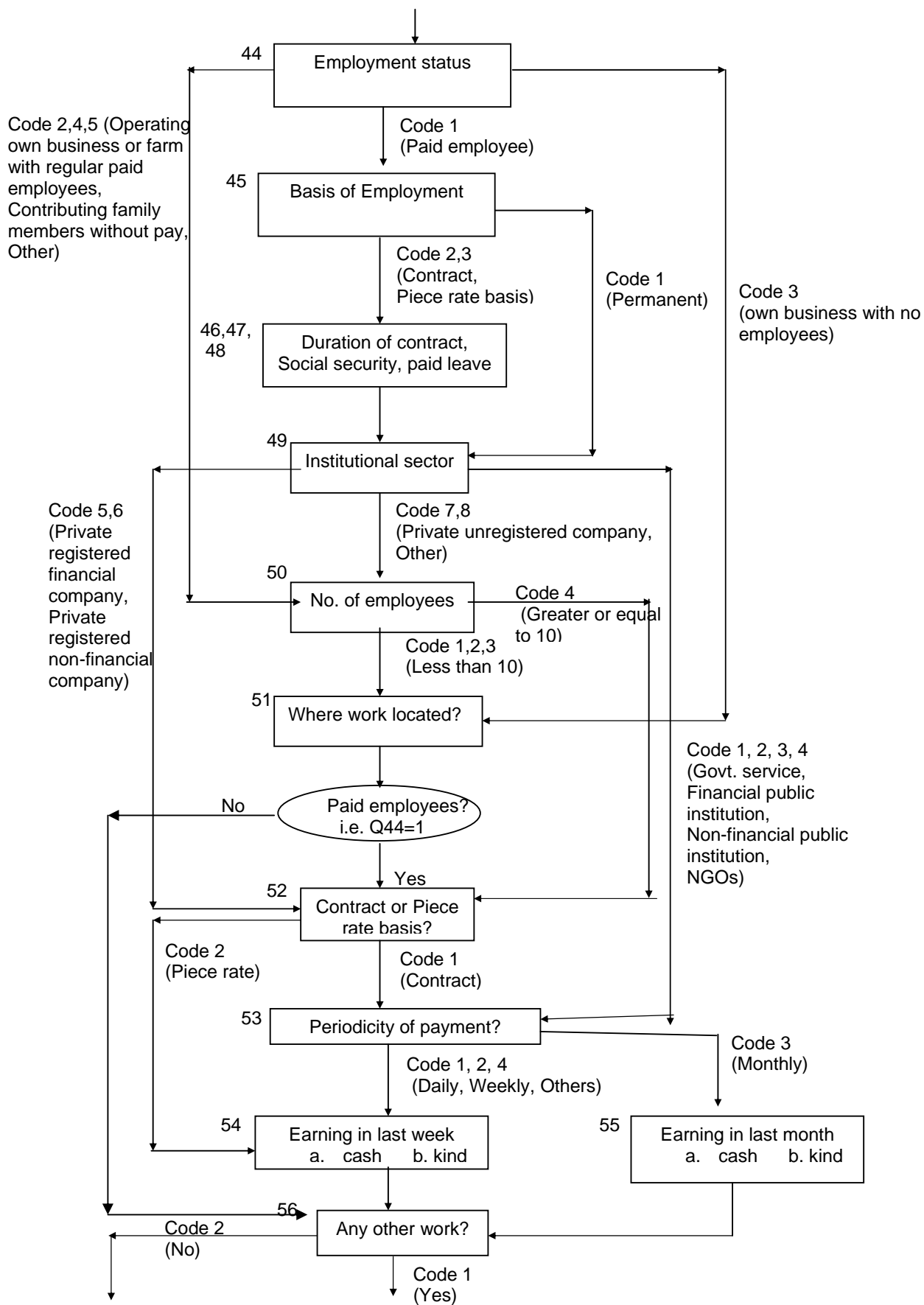


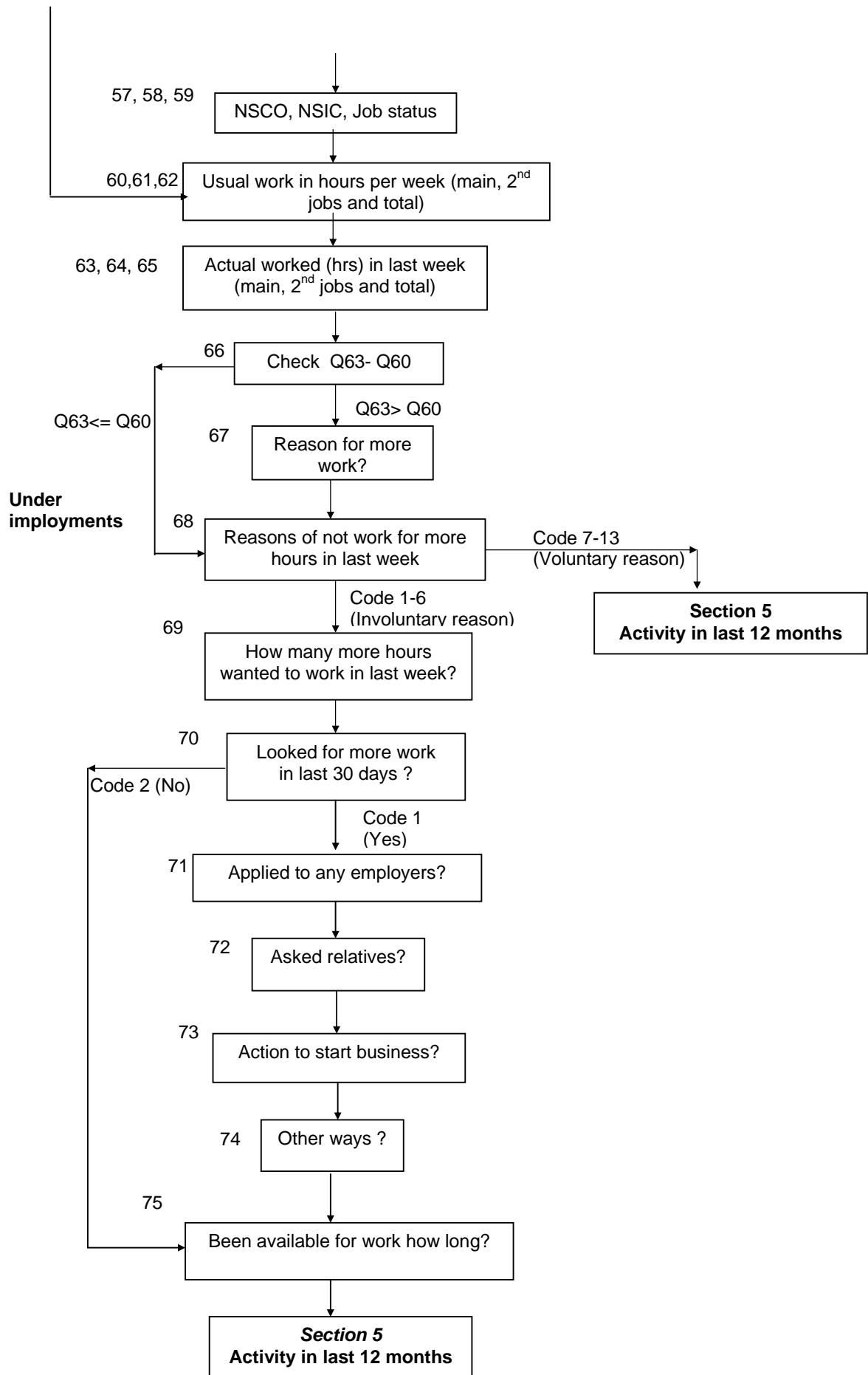


Section 3: Current Activity

All household members age 5+

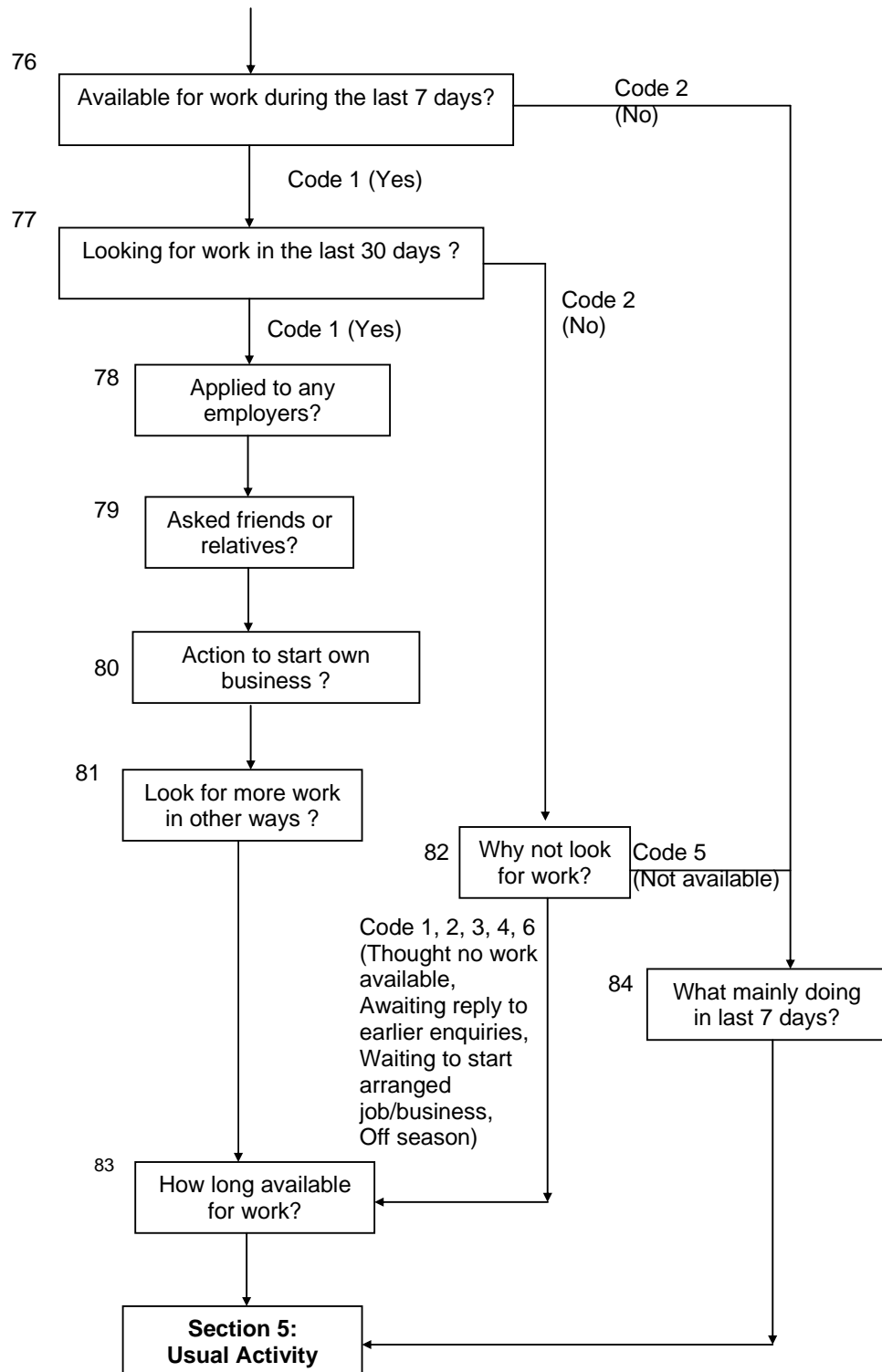






Section 4: Unemployment

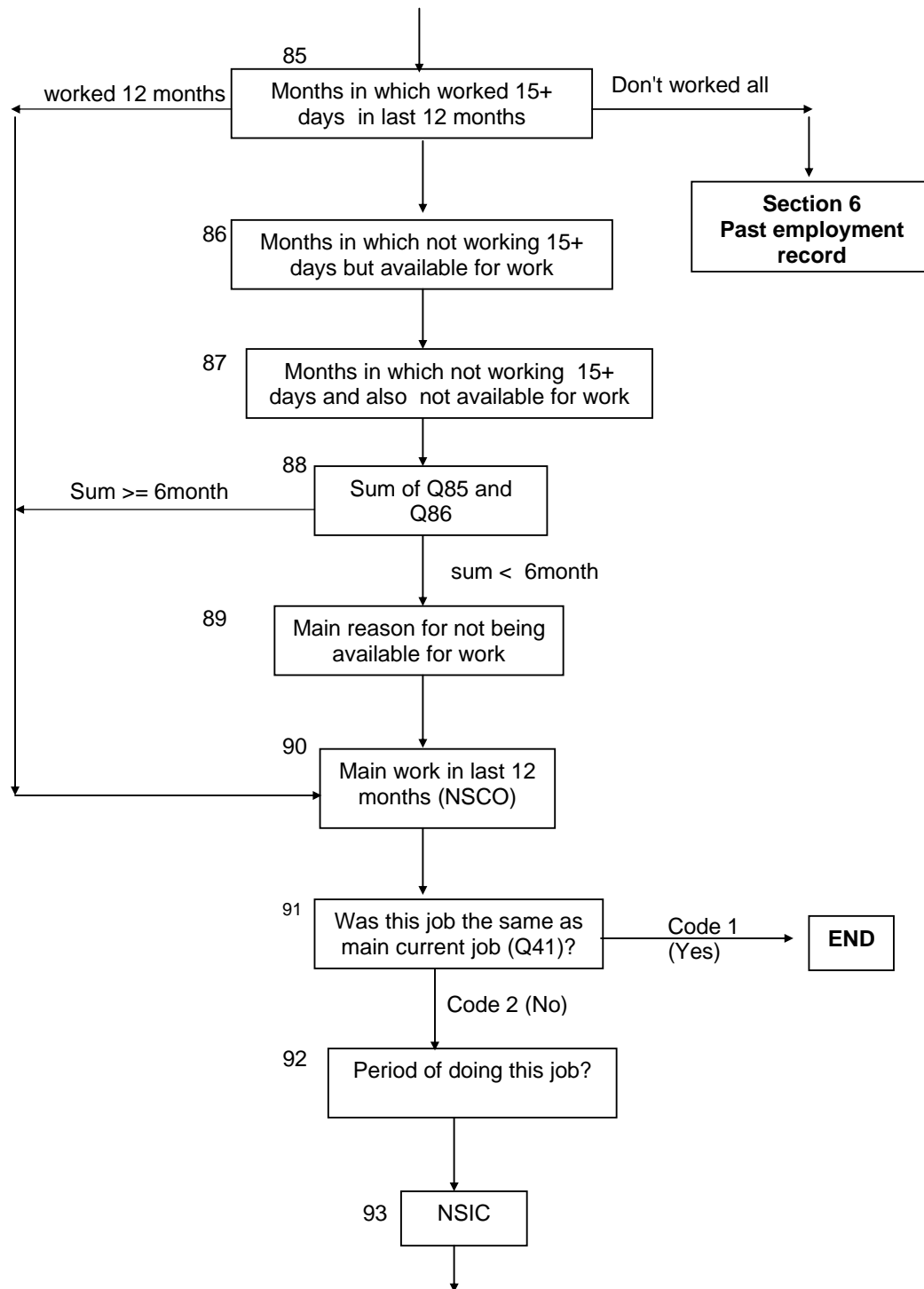
Household members aged 5+ who did not work in the last 7 days (Q36T=0) and
who do not have a job to return to (Q38=No)
or who do have a job to return to but have been away from it without pay or
returns for two months or more (Q40= 2 months or more)

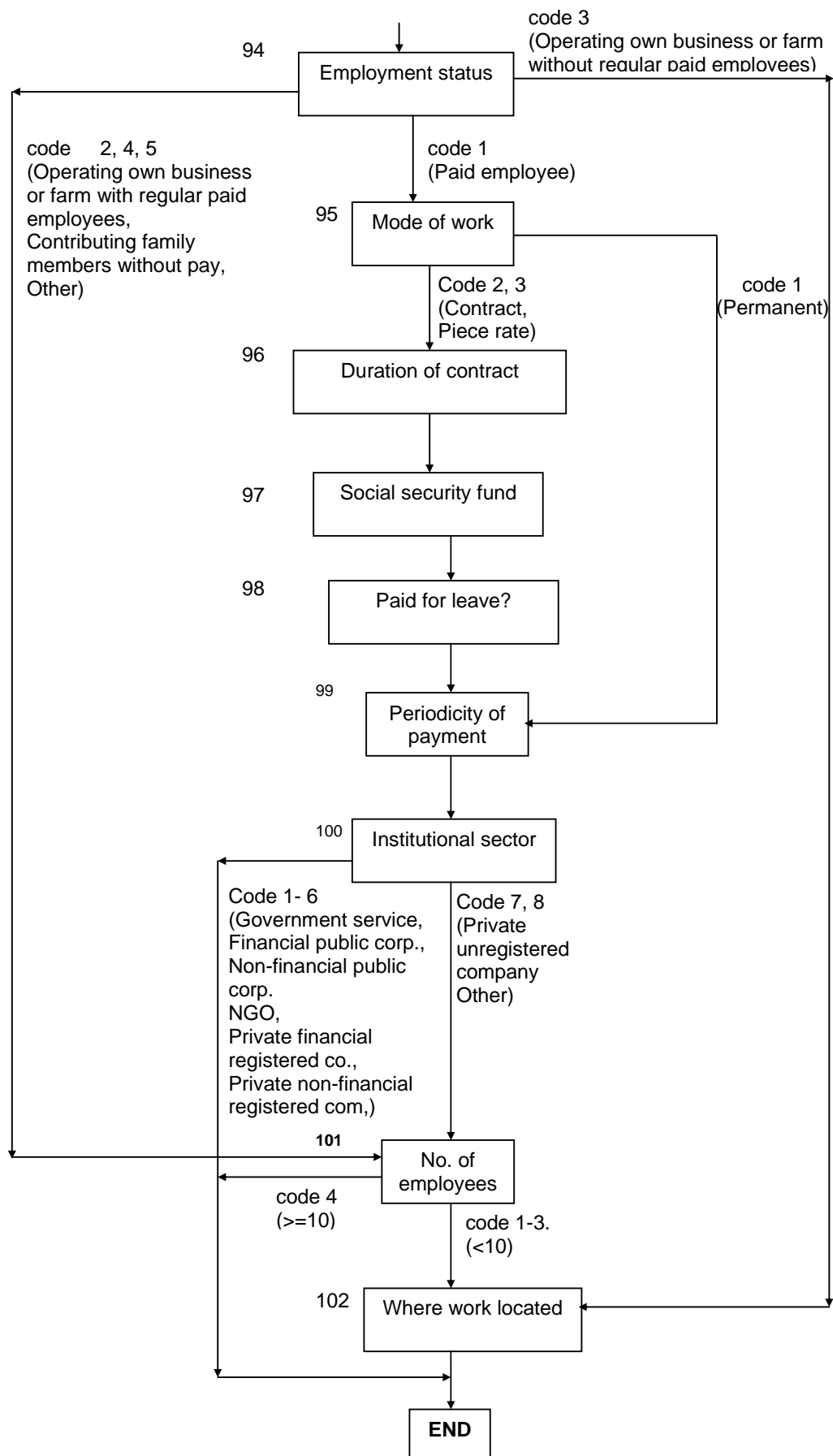


Section 5: Usual Activity

(NOTE: Under international statistical standards, "Usual activity status" is determined on basis of days or weeks employed or unemployed and not in terms of months employed or unemployed.)

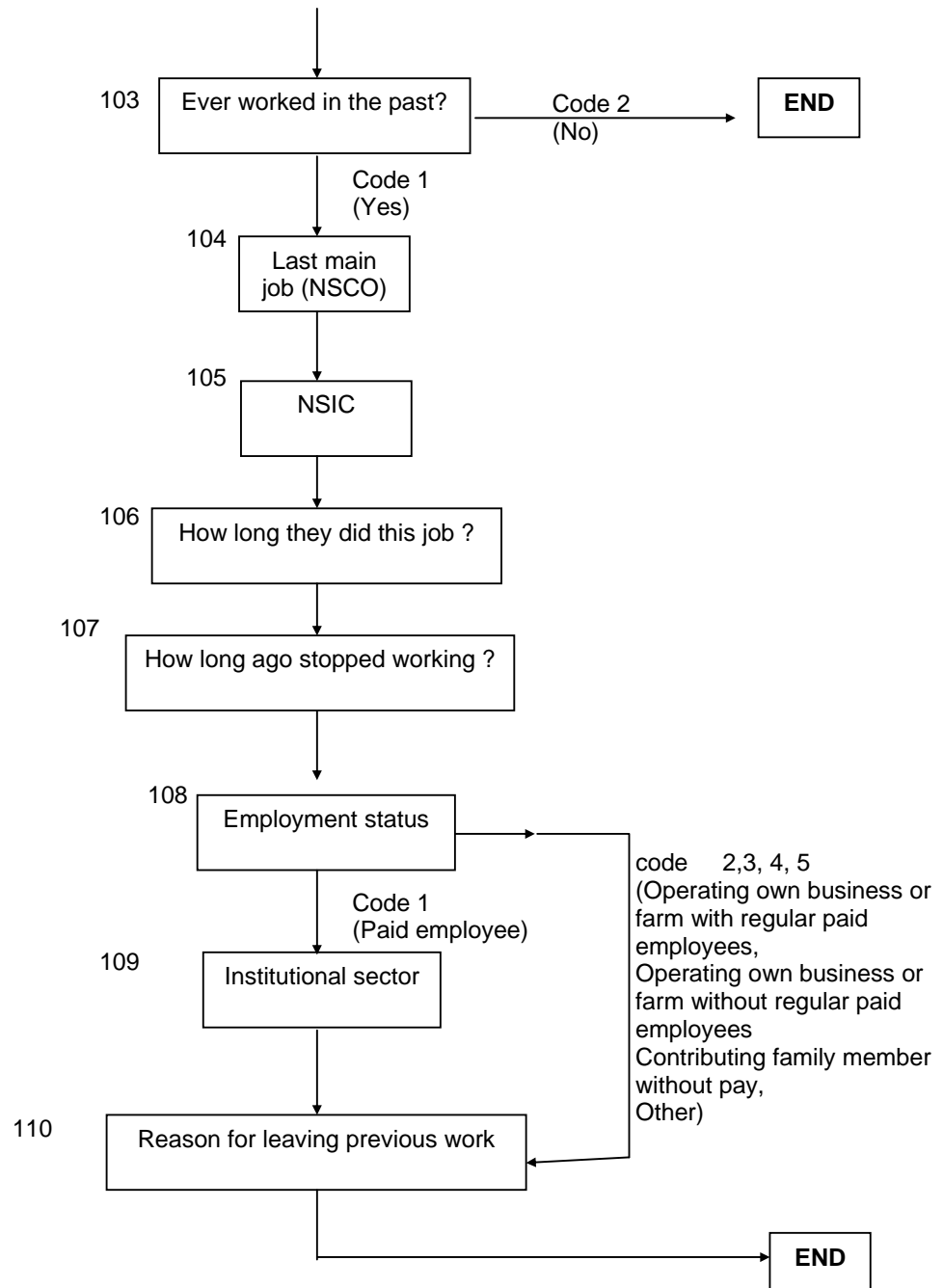
All household members aged 5+



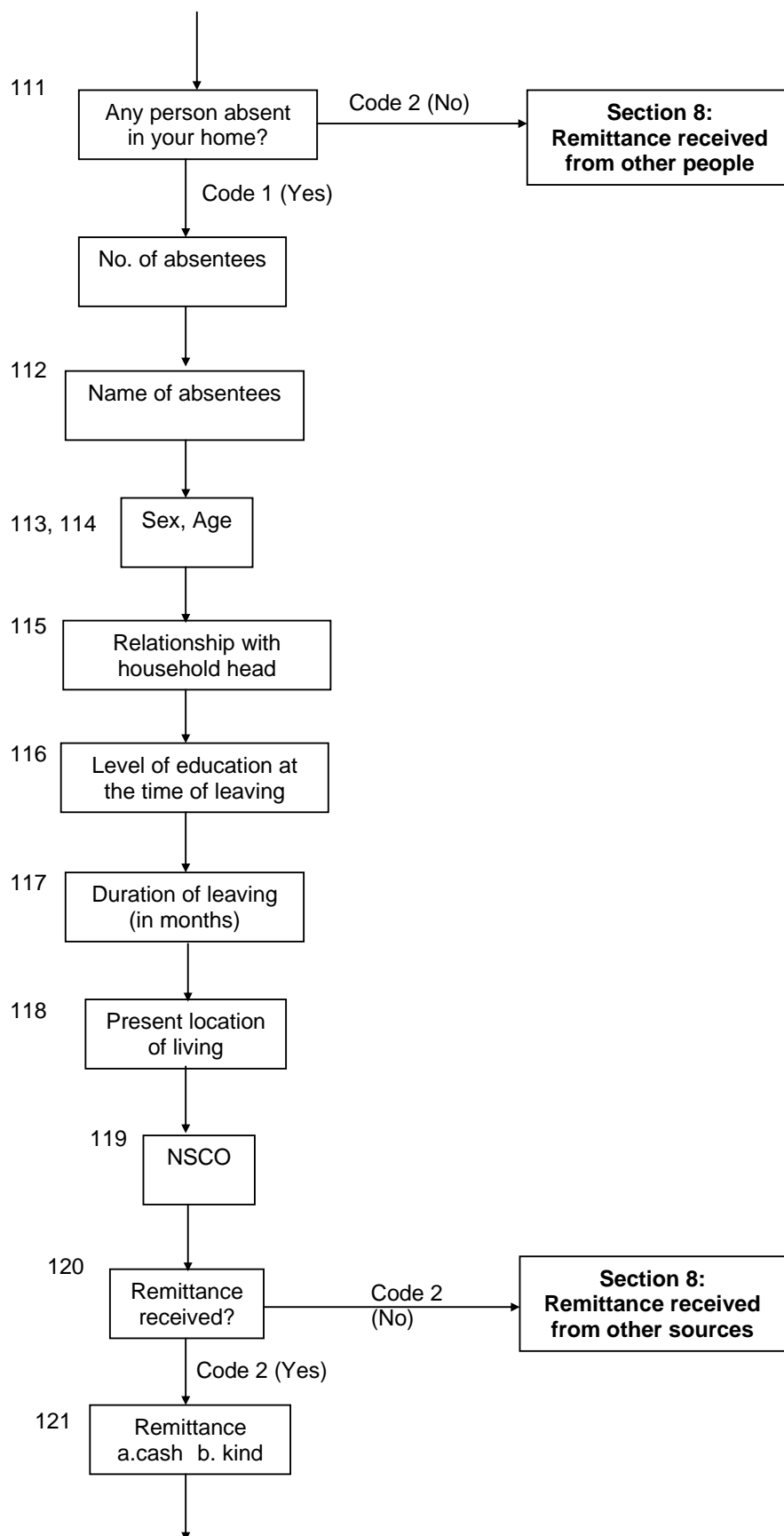


Section 6: Past employment record

(Only those who did no work in the last 12 months – Q85=0)



Section 7: Absentees information



Section 8: Remittance received from other people

