



2010 Labour Force Survey- Liberia's Experience

Presentation by: **Yusuff M. Sarnoh**

Senior Research Officer

**Liberia Institute of Statistics and Geo-Information Services
(LISGIS)**



Overview of the 2010 LFS



- ✓ Since the independence of Liberia in 1847, this is the first time Liberia has conducted a nationwide Labour Force Survey (LFS).
- ✓ Before the 2010 LFS, information on employment was unavailable but where available the data was scanty.
- ✓ The 2008 National Population & Housing Census included a few questions related to employment.



Overview of the LFS 2010 - Contd



Other recent related surveys conducted by LISGIS –

- the 2007 & 2010 Core Welfare Indicators Questionnaire (CWIQ) surveys
- Liberia Demographic and Health Survey (LDHS) - have also included some questions on employment.
- The 2010 LFS is the first survey to include detailed questions on all aspects of employment and unemployment.



Rationale for conducting the 2010 LFS



- After the elections in 2005 there was a need for detailed information on employment and other socio-economic indicators on Liberia
- PRS deliverable for both LISGIS and Ministry of Labour to conduct the LFS
- Collect information about various aspects of people's economic activity



Rationales for conducting the 2010 LFS - Contd



- Compile national and county statistics relating to employment, unemployment and underemployment, and to many other aspects of people's working lives.
- Statistics will be useful to Government as it attempts to identify the problems Liberians face in the area of employment.
- With this information available, planners and policy makers will then be better placed to develop policies and programmes to improve the welfare of the people.



Preparation for the 2010 LFS



- Planning stage : Late 2008 late 2009, but delays in securing the required funding for the survey necessitated a delay in survey implementation.
- Formation of **Survey Technical Committee** (comprising of staff from LISGIS, MOL, UNDP, ILO, MPEA, UNICEF and some Stakeholders.
- The TOR for the Technical Committee was to review and validate the survey instrument.
- Formation of **Survey Management Team**: Task with the responsibility of formulate policy, provide general guidelines and monitor the implementation of the survey activities



Institutional Framework of the 2010 LFS

- Also a forum for Development Partners meeting was Established
 - LISGIS Chair
 - Ministry of Labour Secretary
 - Minister of Inter Affairs Member
 - UNICEF Member
 - ILO Member
 - USAID Member
 - UNMIL Member
 - UNDP Member
- The main TOR for the Development Partners Meeting was to mobilize fund for the survey



Publicity and Advocacy



- LISGIS extensively used the print and electronic medias
- The Local Chiefs and Elders assisted LISGIS with civic education for the survey



Preparation for the 2010 LFS



- Fieldwork for the survey started in February 2010
- LFS Survey Design: Household



Cartography & Mapping



- Satellite images were used to map urban areas, while free hand sketches were employed to map the rural areas
- The maps and list of households were developed by GIS division were used.
- A total of about 7,020 EAs were demarcated during the 2008 NPHC



Number of EA s to be selected (Note: 12 households will be taken in each EA)

County	Urban	Rural	Total	Region	Urban	Rural
Bomi	24	12	36	North Western	48	48
Grand Cape Mount	16	16	32			
Gbarpolu	8	20	28			
Montserrado (exc GM)	16	16	32	South Central Exc. GM	48	48
Margibi	16	16	32			
Grand Bassa	16	16	32			
River Cess	3	25	28	South Eastern A	48	48
Sinoe	16	16	32			
Grand Gedeh	29	7	36			
River Gee	16	16	32	South Eastern B	48	48
Grand Kru	6	22	28			
Maryland	26	10	36			
Bong	16	16	32	North Central	48	48
Nimba	16	16	32			
Lofa	16	16	32			
GM	60	-	60	<i>GM</i>	60	
Total	300	240	540		300	240



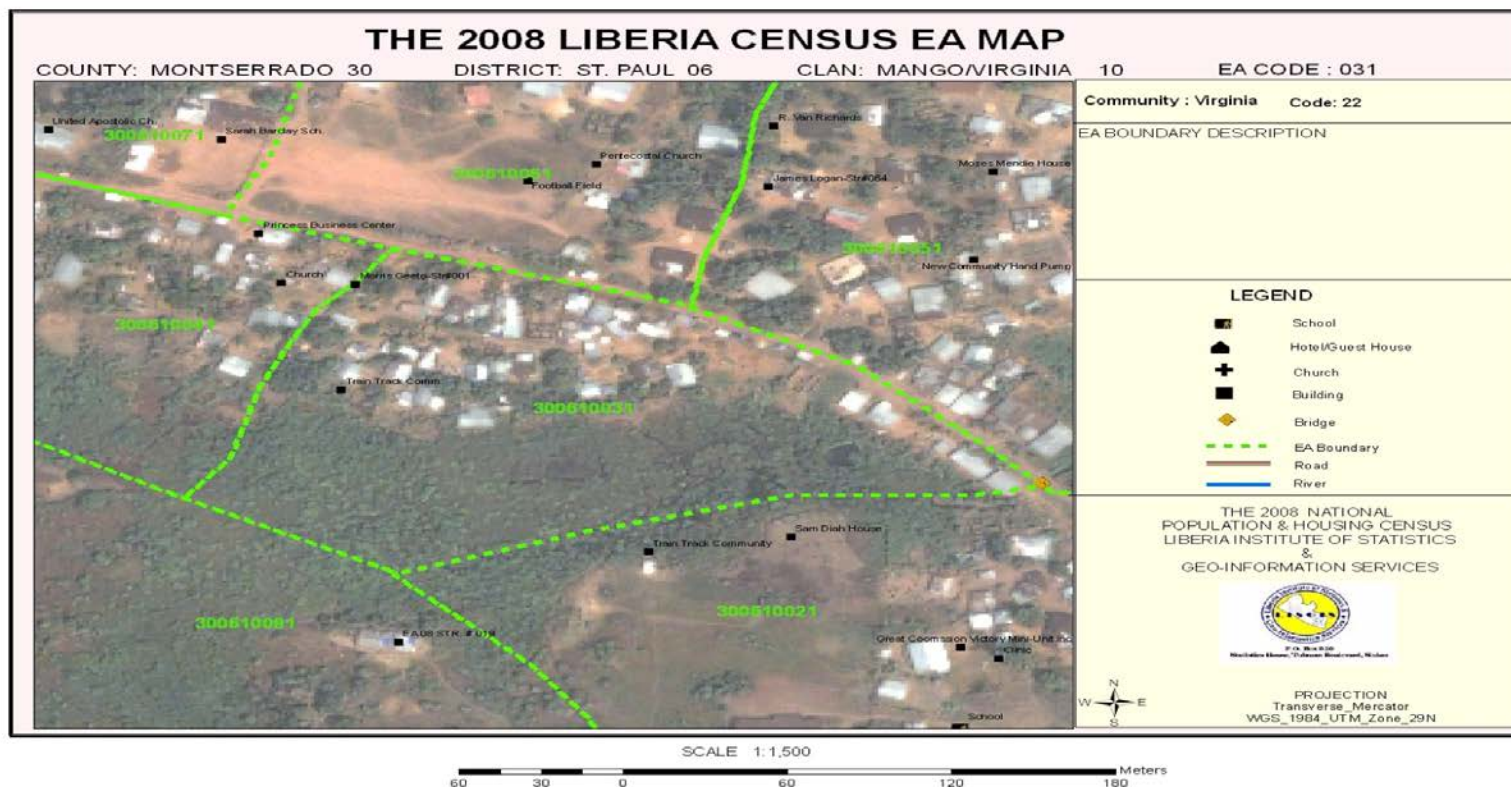
Key Facts



- 540 EAs selected across the country based on the 2008 National Population and Housing Census Sampling Frame
- 12 households per EA selected
- 6,480 households were selected to be interviewed
- 24 percent replacement rate of selected households that moved.
- Reasons:
 - 1. Main household not found
 - 2. Refusal to respond (very low)

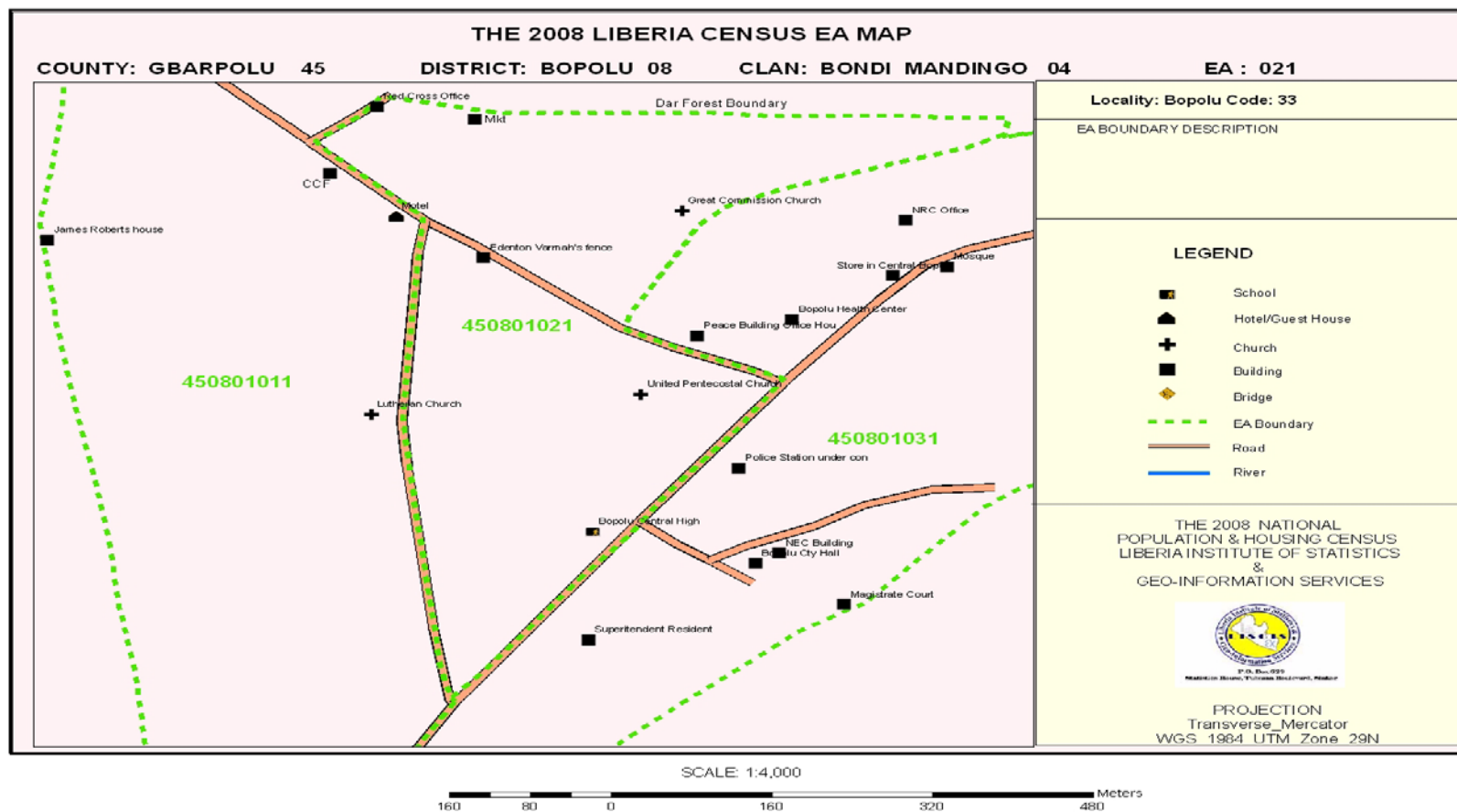


Cartography/Mapping





Cartography/Mapping





TIMEFRAME FOR THE LSF BY MAIN PHASES

MAIN PHASES	TIMEFRAME
PREPARATION	2008-2009
TRAINING	FEB., 2010(FOR 5 DAYS IN ALL THE REGIONS)
PILOT CENSUS	5 DAY WITH IN THE RESPECTIVE REGION
FIELD ENUMERATION	MARCH 6-APRIL 6, 2010
DATA PROCESSING	MARCH- MAY 2010
PUBLICATION OF PRELIMINARY RESULTS	July 2010
DATA ANALYSIS, PUBLICATION & DISSEMINATION	In progress by ILO Consultant



Survey Field Enumeration



- The Survey instruments were designed, developed and ready for shipment to the field by **March 6- April 6 2010** (60 days) with technical support from the ILO
- **6 Regional** Coordinators recruited from **LISGIS** & **MoL**
- **34 Field supervisors** were recruited and Trained
- **A total of 136** enumerators were recruited and trained at the regional levels including regional coordinators and field supervisors were recruited, trained, and deployed to conduct the enumeration



Data Processing



- A total of about 12 coders and 20 data entry clerks were recruited and trained how to code and enter the data, respectively



Key Indicators of the Labour Market – LFS 2010



Key Indicators of the labour market

6 indicators selected:

Indicator 1: Labour Force Participation Rate

Indicator 2: Employment-to-Population Ratio

Indicator 3: Employment by Sector (ISCO and ISIC Classifications)

Indicator 4: Employment by Status (including Vulnerable Employment Rate)

Indicator 5: Underemployment Rate

Indicator 6: Unemployment Rate

Informal sector & Employment

Union membership



Next steps



Future activities linked to the 2010 LFS

- Labour Force Survey Report (by the end of 2010)
- Child labour Report



Future labour statistics related activities in Liberia

- What is in the NSDS plan
- Establishment survey (2011)
- Second labour force survey to allow comparisons (2014)



Lessons Learnt & Challenges

- Great interest by the government for the conduct of the LFS
- Limited capacity
- Limited physical infrastructure and human resources to compile, analyze and disseminate survey data
- Funds were not available when needed and as such implementation schedules were impacted



Thank you for your Attention!