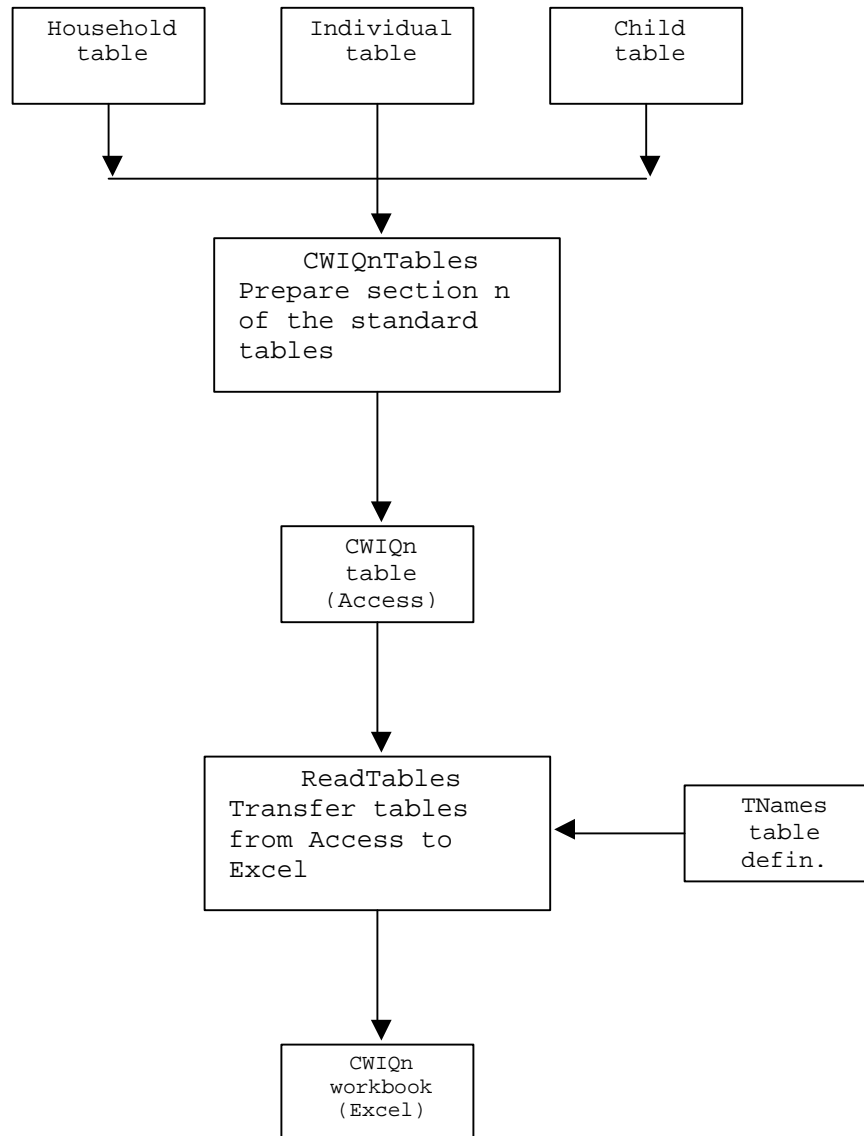


Program: CWIQnTables – Prepare CWIQ standard tables

## 1. Schematic



## 2. Input

### A. CWIQ questionnaire database.

The CWIQ questionnaire database consists of three tables: the household table; the individual table; and the child table. For each household surveyed there is one record in the household table (HHData), one record for each household member in the individual table (INData) and one record for each child under 5 in the child table (CHData).

### 3. Output

#### A. CWIQn output table.

This table contains the standard report tables for section n of the standard CWIQ tabulation plan. There are seven sections (0 to 6) in the tabulation plan as described below.

#### B. CWIQn.xls Excel workbook

There is an Excel workbook corresponding to each output table CWIQn. Worksheets, identified by table number, are pre-formatted with table headings, column headings, row headings and row stubs.

#### C. Table definitions (TNames).

This table contains an entry, identified by table number, for each report table. The table definition consists of the number of columns in the report table and the starting row for data in the Excel worksheet.

### 4. Processing

Prepare tables according to the specifications in Appendix C.

Each report table is defined as one or more sub-tables represented as a rectangular cTable object (see the cTable class module documentation). Each sub-table has a name beginning with “T” (report table) or “W” (work table) followed by a single digit identifying the section of the tabulation plan (0 to 6) and a one or two digit table sequence number; the sub-table row variable name completes the sub-table name. Each sub-table is written by row to the appropriate output table. Rows in the output table are identified by sub-table sequence number, sub-table name and row number; the output table also contains the cell values (up to 11 cells) for the row.

The output tables are transferred to the corresponding Excel workbook. Each report table is transferred to a separate worksheet. The table definitions are retrieved for each report table to define the number of columns in the table and the starting row for the data. Sub-tables within a worksheet are normally separated by a blank line, although there are exceptions for nested sub-tables (in tables 0.2, 0.3, 0.4, 1.2, 1.3, 1.4, and 5.0). Cell values are transferred to the worksheet starting at column 2.

#### Summary of table programs

<u>Module name</u>	<u>Table subject</u>	<u>Access table</u>	<u>Excel workbook</u>
CWIQ0Table	Background tables	CWIQ0	CWIQ0.xls
CWIQ1Table	General results	CWIQ1	CWIQ1.xls
CWIQ2Table	Household characteristics	CWIQ2	CWIQ2.xls
CWIQ3Table	Education	CWIQ3	CWIQ3.xls
CWIQ4Table	Health	CWIQ4	CWIQ4.xls
CWIQ5Table	Nutrition	CWIQ5	CWIQ5.xls
CWIQ6Table	Employment	CWIQ6	CWIQ6.xls

## Appendix A - table formats

### **CWIQ<sub>n</sub> – CWIQ<sub>n</sub> output table**

<u>Name</u>	<u>Description</u>	<u>Type</u>
RowN	Sub-table sequence number	Integer 2
Name	Sub-table name	Text 12
Row	Row number	Byte 1
Label	not currently used	Text 16
C1	Column 1 cell value	Single 4
C2	Column 2 cell value	Single 4
C3	Column 3 cell value	Single 4
C4	Column 4 cell value	Single 4
C5	Column 5 cell value	Single 4
C6	Column 6 cell value	Single 4
C7	Column 7 cell value	Single 4
C8	Column 8 cell value	Single 4
C9	Column 9 cell value	Single 4
C10	Column 10 cell value	Single 4
C11	Column 11 cell value	Single 4

## Appendix B – CWIQ standard Excel table format

Font: Times New Roman 8 point

Table and row headings are bold and left justified

Column headings are centered on the column

Row height = 10.25

Column width = 8.29

Horizontal lines are 0.25

Margins: top = bottom = 1"; left = 1.75", right = 0.75"; header = footer = 0.75"

## Appendix C – Table specifications

The table specifications consist of sample tables annotated with column variable definitions, cell formats and any non-standard formatting used. The row variables are background characteristics for the most part. Most of these variables appear in multiple tables, so their definitions appear at the start of the specifications and not with the tables. Codes for cell formats are CJ, RJn, and PCn. CJ means center justified. RJn means a number with no decimal places, right justified with n trailing blanks to center the numbers in the cell. PCn means a number with one decimal place, right justified with n trailing blanks to center the numbers in the cell. All RJn and PCn formats are defined as custom styles.

### Background variables

#### **Household characteristics**

Place of residence:

Rural: UrbRur = R

Urban: UrbRur = U

Place of residence (expanded):

Rural: UrbRur = R

Rural poor: UrbRur = R, Quintile = 1

Urban: UrbRur = U

Urban poor: UrbRur = U, Quintile = 1

Provincia de residencia:

Niassa: Region = 01

Cabo Delgado: Region = 02

Nampula: Region = 03

Zambézia: Region = 04

Tete: Region = 05

Manica: Region = 06

Sofala: Region = 07

Inhambane: Region = 08

Gaza: Region = 09

Maputo Provincia: Region = 10

Maputo Cidade: Region = 11

Household size:

1-2: HhSize = 1-2

3-4: HhSize = 3-4

5-6: HhSize = 5-6

7+: Hhsize

Land holding:

None: F3=0

< 1 ha: F3 < 1

1-1.99 ha: F3 >= 1, F3 < 2

2-3.99 ha: F3 >= 2, F3 < 4

4-5.99 ha: F3 >= 4, F3 < 6

6+: F3 >= 6

Livestock holding:

None: F8 = 0, F10 = 0

Small only: F8 = 0, F10 > 0

Large only: F8 > 0, F10 = 0

Both: F8 > 0, F10 > 0

### **Characteristics of the head of household**

Socio-economic group of the head of household: (TO BE DEFINED)

Public: SEG = 1

Private formal: SEG = 2

Private informal: SEG = 3

Self-agriculture: SEG = 4

Self-other: SEG = 5

Unemployed: SEG = 6

Other: SEG = 7

Gender of the head of household:

Male: Hgender = 1

Female: Hgender = 2

Marital status of the head of household:

Single: HMStat = 1

Monogamous: HMStat = 2

Polygamous: HMStat = 3

Widowed/div/sep: HMStat = 4

Highest level of education of head of household: (PROPOSED)

Nenhum: Heduc = 00, 01

Primario: Heduc = 02, 03, 06

Secundário et mais: Heduc = 04, 05, 09, 10

Técnico: Heduc = 07, 08

Outros: Heduc = 11

## **Household member characteristics**

Gender:

Male: B1 = 1

Female: B1 = 2

Age:

< 15: B5 < 15

15-64: B5 = 15-64

65+: B5 >= 65

**Tabela 0.1 - Agregados familiares segundo área e província de residência**

	Agregados não ponderados	Percentagens não ponderadas	Agregados ponderados	Percentagens ponderadas
<b>Total</b>	1054	100.0	1054	100.0
<b>Área de residência</b>				
Rural	738	70.0	738	70.0
Urbana	316	30.0	316	30.0
<b>Província de residência</b>				
Niassa	548	52.0	548	52.0
Cabo Delgado	506	48.0	506	48.0
Nampula	548	52.0	548	52.0
Zambézia	506	48.0	506	48.0
Tete	548	52.0	548	52.0
Manica	506	48.0	506	48.0
Sofala	548	52.0	548	52.0
Inhambane	506	48.0	506	48.0
Gaza	548	52.0	548	52.0
Maputo Província	506	48.0	506	48.0
Maputo Cidade	548	52.0	548	52.0
Cell format:	RJ9	PC9	RJ7	PC7

**Tabela 0.2 - Distribuição percentual da população rural e urbana segundo província de residência, sexo e idade**

	População não ponderada	Percentagens não ponderadas	População ponderada	Percentagens ponderadas
<b>Total</b>	4789	100.0	4789	100.0
<b>Rural</b>	3336	69.7	3336	69.7
<b>Província de residência</b>				
Niassa	1955	58.6	1955	58.6
Cabo Delgado	1381	41.4	1381	41.4
Nampula	1955	58.6	1955	58.6
Zambézia	1381	41.4	1381	41.4
Tete	1955	58.6	1955	58.6
Manica	1381	41.4	1381	41.4
Sofala	1955	58.6	1955	58.6
Inhambane	1381	41.4	1381	41.4
Gaza	1955	58.6	1955	58.6
Maputo Província	1381	41.4	1381	41.4
Maputo Cidade	1955	58.6	1955	58.6
<b>Sexo</b>				
Homem	1733	51.9	1733	51.9
Mulher	1603	48.1	1603	48.1
<b>Idade</b>				
< 15	1090	32.7	1090	32.7
15-64	2151	64.5	2151	64.5
65+	95	2.8	95	2.8
<b>Urbana</b>	1453	30.3	1453	30.3
<b>Província de residência</b>				
Niassa	576	39.6	576	39.6
Cabo Delgado	877	60.4	877	60.4
Nampula	576	39.6	576	39.6
Zambézia	877	60.4	877	60.4
Tete	576	39.6	576	39.6
Manica	877	60.4	877	60.4
Sofala	576	39.6	576	39.6
Inhambane	877	60.4	877	60.4
Gaza	576	39.6	576	39.6
Maputo Província	877	60.4	877	60.4
Maputo Cidade	576	39.6	576	39.6
<b>Sexo</b>				
Homem	728	50.1	728	50.1
Mulher	725	49.9	725	49.9
<b>Idade</b>				
< 15	495	34.1	495	34.1
15-64	920	63.3	920	63.3
65+	38	2.6	38	2.6

Cell format:                      RJ9                      PC9                      RJ7                      PC7



**Tabela 0.3 - Distribuição dos agregados familiares rurais e urbanas segundo província de residência, tamanho de agregado, posse de terra e animais**

	Agregados não ponderados	Percentagens não ponderadas	Agregados ponderados	Percentagens ponderadas
<b>Total</b>	1054	100.0	1054	100.0
<b>Rural</b>	738	70.0	738	70.0
<b>Província de residência</b>				
Niassa	425	57.6	425	57.6
Cabo Delgado	313	42.4	313	42.4
Nampula	425	57.6	425	57.6
Zambézia	313	42.4	313	42.4
Tete	425	57.6	425	57.6
Manica	313	42.4	313	42.4
Sofala	425	57.6	425	57.6
Inhambane	313	42.4	313	42.4
Gaza	425	57.6	425	57.6
Maputo Província	313	42.4	313	42.4
Maputo Cidade	425	57.6	425	57.6
<b>Tamanho de agregado</b>				
1-2	184	24.9	184	24.9
3-4	204	27.6	204	27.6
5-6	199	27.0	199	27.0
7+	151	20.5	151	20.5
<b>Tamanho de terra que o agregado possui</b>				
None	703	95.3	703	95.3
< 1 ha	18	2.4	18	2.4
1-1.99 ha	7	0.9	7	0.9
2-3.99 ha	6	0.8	6	0.8
4-5.99 ha	1	0.1	1	0.1
6+ ha	3	0.4	3	0.4
<b>Tipo de animais que o agregado possui</b>				
Ninguém	706	95.7	706	95.7
Só pequenos	23	3.1	23	3.1
Só grandes	4	0.5	4	0.5
Ambos	5	0.7	5	0.7

<b>Urbana</b>	316	30.0	316	30.0
<b>Provincia de residencia</b>				
Niassa	425	57.6	425	57.6
Cabo Delgado	193	61.1	193	61.1
Nampula	425	57.6	425	57.6
Zambézia	313	42.4	313	42.4
Tete	425	57.6	425	57.6
Manica	313	42.4	313	42.4
Sofala	425	57.6	425	57.6
Inhambane	313	42.4	313	42.4
Gaza	425	57.6	425	57.6
Maputo Provincia	313	42.4	313	42.4
Maputo Cidade	425	57.6	425	57.6
<b>Tamanho de agregado</b>				
1-2	65	20.6	65	20.6
3-4	100	31.6	100	31.6
5-6	97	30.7	97	30.7
7+	54	17.1	54	17.1
<b>Tamanho de terra que o agregado possui</b>				
Nada	304	96.2	304	96.2
< 1 ha	5	1.6	5	1.6
1-1.99 ha	3	0.9	3	0.9
2-3.99 ha	3	0.9	3	0.9
4-5.99 ha	0	0.0	0	0.0
6+ ha	1	0.3	1	0.3
<b>Tipo de animais que o agregado possui</b>				
Ninguem	305	96.5	305	96.5
Só pequenos	9	2.8	9	2.8
Só grandes	1	0.3	1	0.3
Ambos	1	0.3	1	0.3

Cell format: RJ7 PC7 RJ7 PC7

**Tabela 0.4 - Distribuição percentual da população rural e urbana segundo características do chefe do agregado familiar**

	Agregados não ponderados	Percentagens não ponderadas	Agregados ponderados	Percentagens ponderadas
<b>Total</b>	1054	100.0	1054	100.0
<b>Rural</b>	738	70.0	738	70.0
<b>Inserção laboral</b>				
Sector público	112	15.2	112	15.2
Sector privado formal	128	17.3	128	17.3
Sector privado informal	7	0.9	7	0.9
Agricultura a conta própria	26	3.5	26	3.5
Outros a conta própria	356	48.2	356	48.2
Desempregados	102	13.8	102	13.8
Outros	1	0.1	1	0.1
<b>Sexo</b>				
Homem	610	82.7	610	82.7
Mulher	128	17.3	128	17.3
<b>Estado civil</b>				
Solteiro	113	15.3	113	15.3
Casado	524	71.0	524	71.0
Casado em poligamia	8	1.1	8	1.1
Viuvo/ sep/div	91	12.3	91	12.3
<b>Nível mais alto de educação</b>				
Nenhum	146	19.8	146	19.8
Primario	120	16.3	120	16.3
Secundário et mais	428	58.0	428	58.0
Técnico	19	2.6	19	2.6
Outros	22	3.0	22	3.0
<b>Urbana</b>	316	30.0	316	30.0
<b>Inserção laboral</b>				
Sector público	49	15.5	49	15.5
Sector privado formal	36	11.4	36	11.4
Sector privado informal	9	2.8	9	2.8
Agricultura a conta própria	4	1.3	4	1.3
Outros a conta própria	174	55.1	174	55.1
Desempregados	43	13.6	43	13.6
Outros	0	0.0	0	0.0
<b>Sexo</b>				
Homem	261	82.6	261	82.6
Mulher	55	17.4	55	17.4
<b>Estado civil</b>				
Solteiro	40	12.7	40	12.7
Casado	227	71.8	227	71.8
Casado em poligamia	6	1.9	6	1.9
Viuvo/ sep/div	43	13.6	43	13.6
<b>Nível mais alto de educação</b>				
Nenhum	70	22.2	70	22.2
Primario	49	15.5	49	15.5
Secundário et mais	0	0.0	0	0.0
Técnico	182	57.6	182	57.6
Outros	6	1.9	6	1.9

Cell format:

RJ7

PC7

RJ7

PC7

**Tabela 0.5 - Distribuição percentual da população total segundo área e província de residência**

	População não ponderada	Percentagens não ponderadas	População ponderada	Percentagens ponderadas
<b>Total</b>	4789	100.0	4789	100.0
<b>Área de residência</b>				
Rural	3336	69.7	3336	69.7
Urbano	1453	30.3	1453	30.3
<b>Província de residência</b>				
Niassa	2531	52.9	2531	52.9
Cabo Delgado	2258	47.1	2258	47.1
Nampula	2531	52.9	2531	52.9
Zambézia	2258	47.1	2258	47.1
Tete	2531	52.9	2531	52.9
Manica	2258	47.1	2258	47.1
Sofala	2531	52.9	2531	52.9
Inhambane	2258	47.1	2258	47.1
Gaza	2531	52.9	2531	52.9
Maputo Província	2258	47.1	2258	47.1
Maputo Cidade	2531	52.9	2531	52.9
<b>Sexo</b>				
Homem	2461	51.4	2461	51.4
Mulher	2328	48.6	2328	48.6
<b>Idade</b>				
< 15	1585	33.1	1585	33.1
15-64	3071	64.1	3071	64.1
65+	133	2.8	133	2.8
Cell format:	RJ7	PC7	RJ7	PC7

**Tabela 0.6 - Distribuição dos agregados familiares segundo área e província de residência, tamanho de agregado, posse de terra e animais**

	Agregados não ponderados	Percentagens não ponderadas	Agregados ponderados	Percentagens ponderadas
<b>Total</b>	1054	100.0	1054	100.0
<b>Área de residência</b>				
Rural	738	70.0	738	70.0
Urbana	316	30.0	316	30.0
<b>Província de residência</b>				
Niassa	548	52.0	548	52.0
Cabo Delgado	506	48.0	506	48.0
Nampula	548	52.0	548	52.0
Zambézia	506	48.0	506	48.0
Tete	548	52.0	548	52.0
Manica	506	48.0	506	48.0
Sofala	548	52.0	548	52.0
Inhambane	506	48.0	506	48.0
Gaza	548	52.0	548	52.0
Maputo Província	506	48.0	506	48.0
Maputo Cidade	548	52.0	548	52.0
<b>Tamanho de agregado</b>				
1-2	249	23.6	249	23.6
3-4	304	28.8	304	28.8
5-6	296	28.1	296	28.1
7+	205	19.4	205	19.4
<b>Tamanho de terra que o agregado possui</b>				
Nada	1007	95.5	1007	95.5
< 1 ha	23	2.2	23	2.2
1-1.99 ha	10	0.9	10	0.9
2-3.99 ha	9	0.9	9	0.9
4-5.99 ha	1	0.1	1	0.1
6+ ha	9	0.9	9	0.9
<b>Tipo de animais que</b>				
Nenhum	9	0.9	9	0.9
Só pequenos	1	0.1	1	0.1
Só grandes	9	0.9	9	0.9
Ambos	1	0.1	1	0.1

Cell format:

RJ7

PC7

RJ7

PC7

**Tabela 0.7 - Distribuição percentual de agregados familiares segundo área de residencia e características do chefe de agregado**

	Agregados não ponderados	Percentagens não ponderadas	Agregados ponderados	Percentagens ponderadas
<b>Total</b>	1054	100.0	1054	100.0
<b>Área de residencia</b>				
Rural	738	70.0	738	70.0
Urbana	316	30.0	316	30.0
<b>Inserção laboral</b>				
Sector público	161	15.3	161	15.3
Sector privado formal	164	15.6	164	15.6
Sector privado informal	16	1.5	16	1.5
Agricultura a conta propria	30	2.8	30	2.8
Outros a conta propria	530	50.3	530	50.3
Desempregados	145	13.8	145	13.8
Outros	1	0.1	1	0.1
<b>Sexo</b>				
Homem	871	82.6	871	82.6
Mulher	183	17.4	183	17.4
<b>Estado civil</b>				
Solteiro	153	14.5	153	14.5
Casado	751	71.3	751	71.3
Casado em poligâmia	14	1.3	14	1.3
Viuvo/ sep/div	134	12.7	134	12.7
<b>Nível mais alto de educação</b>				
Nenhum	216	20.5	216	20.5
Primario	169	16.0	169	16.0
Secundário et mais	3	0.3	3	0.3
Técnico	610	57.9	610	57.9
Outros	25	2.4	25	2.4

Cell format:

RJ7

PC7

RJ7

PC7

**Tabela 1.1 - Resultados de enumeração segundo área e provincia de residencia**

	Agregados na amostra	Agregados enumerados	Agregados recuses	Agregados ausentes	Não enumerados	Taxa de resposta
<b>Total</b>	1054	97.0	0.7	2.4	0.0	97.0
<b>Área de residencia</b>						
Rural	738	97.2	0.5	2.3	0.0	97.2
Urbana	316	96.5	0.9	2.5	0.0	96.5
<b>Provincia de residencia</b>						
Niassa	548	96.2	0.9	2.9	0.0	96.2
Cabo Delgado	506	97.8	0.4	1.8	0.0	97.8
Nampula	548	96.2	0.9	2.9	0.0	96.2
Zambézia	506	97.8	0.4	1.8	0.0	97.8
Tete	548	96.2	0.9	2.9	0.0	96.2
Manica	506	97.8	0.4	1.8	0.0	97.8
Sofala	548	96.2	0.9	2.9	0.0	96.2
Inhambane	506	97.8	0.4	1.8	0.0	97.8
Gaza	548	96.2	0.9	2.9	0.0	96.2
Maputo Provincia	506	97.8	0.4	1.8	0.0	97.8
Maputo Cidade	548	96.2	0.9	2.9	0.0	96.2

Cell format: RJ8 PC6 PC6 PC6 PC6 PC6

Households in sample: all households

Successfully interviewed: A8=1

Refusal: A8=2

Not found: A8=3

Not interviewed: A8=4

Response rate: A8=1 / A8=1-4

**Tabela 1.2 - Distribuição percentual da população rural e urbana segundo quintile de pobreza, provincia de residencia, sexo e idade**

	1º quintile	2º Quintile	3º Quintile	4º Quintile	5º Quintile	Total
<b>Total</b>	19.9	20.1	20.0	20.1	20.0	100.0
<b>Rural</b>	20.1	20.9	19.7	18.7	20.6	100.0
<b>Provincia de residencia</b>						
Niassa	21.4	21.9	18.4	16.9	21.3	100.0
Cabo Delgado	18.2	19.5	21.5	21.4	19.5	100.0
Nampula	21.4	21.9	18.4	16.9	21.3	100.0
Zambézia	18.2	19.5	21.5	21.4	19.5	100.0
Tete	21.4	21.9	18.4	16.9	21.3	100.0
Manica	18.2	19.5	21.5	21.4	19.5	100.0
Sofala	21.4	21.9	18.4	16.9	21.3	100.0
Inhambane	18.2	19.5	21.5	21.4	19.5	100.0
Gaza	21.4	21.9	18.4	16.9	21.3	100.0
Maputo Provincia	18.2	19.5	21.5	21.4	19.5	100.0
Maputo Cidade	21.4	21.9	18.4	16.9	21.3	100.0
<b>Sexo</b>						
Homem						
Mulher	20.3	20.1	19.4	17.2	23.0	100.0
<b>Idade</b>	19.8	21.8	20.0	20.4	17.9	100.0
< 15						
15-64	20.8	25.3	22.6	19.0	12.3	100.0
65+	19.9	19.1	18.3	18.7	24.0	100.0
65+	14.7	12.6	18.9	15.8	37.9	100.0
<b>Urbana</b>	19.4	18.1	20.6	23.2	18.7	100.0
<b>Provincia de residencia</b>						
Niassa	14.6	21.9	22.7	23.8	17.0	100.0
Cabo Delgado	22.6	15.6	19.2	22.8	19.8	100.0
Nampula	14.6	21.9	22.7	23.8	17.0	100.0
Zambézia	22.6	15.6	19.2	22.8	19.8	100.0
Tete	14.6	21.9	22.7	23.8	17.0	100.0
Manica	22.6	15.6	19.2	22.8	19.8	100.0
Sofala	14.6	21.9	22.7	23.8	17.0	100.0
Inhambane	22.6	15.6	19.2	22.8	19.8	100.0
Gaza	14.6	21.9	22.7	23.8	17.0	100.0
Maputo Provincia	22.6	15.6	19.2	22.8	19.8	100.0
Maputo Cidade	14.6	21.9	22.7	23.8	17.0	100.0
<b>Sexo</b>	22.6	15.6	19.2	22.8		
Homem	17.7	18.0	19.6	25.3	19.4	100.0
Mulher	21.1	18.2	21.5	21.1	18.1	100.0
<b>Idade</b>						
< 15	21.6	19.0	21.2	25.9	12.3	100.0
15-64	18.6	17.6	20.4	21.5	21.8	100.0
65+	10.5	18.4	15.8	28.9	26.3	100.0

Cell format: PC6 PC6 PC6 PC6 PC6 PC6

1st Quintile: Quintile = 1

2nd Quintile: Quintile = 2

3rd Quintile: Quintile = 3

4th Quintile: Quintile = 4

5th Quintile: Quintile = 5



**Tabela 1.3 - Distribuição percentual de população rural e urbana segundo quintile de pobreza, província de residência, tamanho de agregado, posse de terra e animais**

	1st Quintile	2nd Quintile	3rd Quintile	4th Quintile	5th Quintile	Total
<b>Total</b>	9.1	13.0	16.1	20.5	41.3	100.0
<b>Rural</b>	9.3	13.4	15.9	19.0	42.4	100.0
<b>Província de residência</b>						
Niassa	9.9	14.4	15.1	17.6	43.1	100.0
Cabo Delgado	8.6	12.1	16.9	20.8	41.5	100.0
Nampula	9.9	14.4	15.1	17.6	43.1	100.0
Zambézia	8.6	12.1	16.9	20.8	41.5	100.0
Tete	9.9	14.4	15.1	17.6	43.1	100.0
Manica	8.6	12.1	16.9	20.8	41.5	100.0
Sofala	9.9	14.4	15.1	17.6	43.1	100.0
Inhambane	8.6	12.1	16.9	20.8	41.5	100.0
Gaza	9.9	14.4	15.1	17.6	43.1	100.0
Maputo Província	8.6	12.1	16.9	20.8	41.5	100.0
Maputo Cidade	9.9	14.4	15.1	17.6	43.1	100.0
<b>Tamanho de agregado</b>						
1-2	0.0	0.0	0.0	0.0	100.0	100.0
3-4	0.0	0.0	0.0	36.8	63.2	100.0
5-6	0.0	8.5	58.8	32.7	0.0	100.0
7+	45.7	54.3	0.0	0.0	0.0	100.0
<b>Tamanho de terra que o agregado possui</b>						
Nada	9.2	12.9	15.4	19.1	43.4	100.0
< 1 ha	22.2	16.7	11.1	22.2	27.8	100.0
1-1.99 ha	0.0	28.6	28.6	14.3	28.6	100.0
2-3.99 ha	0.0	33.3	33.3	16.7	16.7	100.0
4-5.99 ha	0.0	100.0	0.0	0.0	0.0	100.0
6+ ha	0.0	0.0	100.0	0.0	0.0	100.0
<b>Tipo de animais que o agregado possui</b>						
Ninguém	8.9	13.2	16.0	19.3	42.6	100.0
Só pequenos	17.4	13.0	17.4	17.4	34.8	100.0
Só grandes	50.0	0.0	0.0	0.0	50.0	100.0
Ambos	0.0	60.0	0.0	0.0	40.0	100.0

<b>Urbana</b>	8.5	12.0	16.8	24.1	38.6	100.0
<b>Provincia de residencia</b>						
Niassa	6.5	14.6	18.7	25.2	35.0	100.0
Cabo Delgado	9.8	10.4	15.5	23.3	40.9	100.0
Nampula	6.5	14.6	18.7	25.2	35.0	100.0
Zambézia	9.8	10.4	15.5	23.3	40.9	100.0
Tete	6.5	14.6	18.7	25.2	35.0	100.0
Manica	9.8	10.4	15.5	23.3	40.9	100.0
Sofala	6.5	14.6	18.7	25.2	35.0	100.0
Inhambane	9.8	10.4	15.5	23.3	40.9	100.0
Gaza	6.5	14.6	18.7	25.2	35.0	100.0
Maputo Provincia	9.8	10.4	15.5	23.3	40.9	100.0
Maputo Cidade	6.5	14.6	18.7	25.2	35.0	100.0
<b>Tamanho de agregado</b>						
1-2	0.0	0.0	0.0	0.0	100.0	100.0
3-4	0.0	0.0	0.0	43.0	57.0	100.0
5-6	0.0	11.3	54.6	34.0	0.0	100.0
7+	50.0	50.0	0.0	0.0	0.0	100.0
<b>Tamanho de terra que o agregado possui</b>						
Nada	7.6	12.2	17.4	23.0	39.8	100.0
< 1 ha	0.0	0.0	0.0	80.0	20.0	100.0
1-1.99 ha	33.3	0.0	0.0	66.7	0.0	100.0
2-3.99 ha	66.7	33.3	0.0	0.0	0.0	100.0
4-5.99 ha	0.0	0.0	0.0	0.0	0.0	0.0
6+ ha	100.0	0.0	0.0	0.0	0.0	100.0
<b>Tipo de animais que o agregado possui</b>						
Ninguem	7.9	12.1	16.7	23.9	39.3	100.0
Só pequenos	22.2	11.1	22.2	33.3	11.1	100.0
Só grandes	0.0	0.0	0.0	0.0	100.0	100.0
Ambos	100.0	0.0	0.0	0.0	0.0	100.0

Cell format: PC6 PC6 PC6 PC6 PC6 PC6

1st Quintile: Quintile = 1

2nd Quintile: Quintile = 2

3rd Quintile: Quintile = 3

4th Quintile: Quintile = 4

5th Quintile: Quintile = 5

**Tabela 1.4 - Distribuição percentual de agregados familiares rurais e urbanos segundo quintile de pobreza, e características do chefe de agregado**

	1º Quintile	2º Quintile	3º Quintile	4º Quintile	5º Quintile	Total
<b>Total</b>	9.1	13.0	16.1	20.5	41.3	100.0
<b>Rural</b>	9.3	13.4	15.9	19.0	42.4	100.0
<b>Inserção laboral</b>						
Sector público	6.3	14.3	19.6	23.2	36.6	100.0
Sector privado formal	8.6	13.3	17.2	17.2	43.8	100.0
Sector privado informal	14.3	14.3	42.9	0.0	28.6	100.0
Agricultura a conta própria	7.7	23.1	15.4	3.8	50.0	100.0
Outros a conta própria	10.1	13.5	12.1	20.5	43.8	100.0
Desempregados	11.8	10.8	18.6	17.6	41.2	100.0
Outros	0.0	0.0	100.0	0.0	0.0	100.0
<b>Sexo</b>						
Homem	10.3	13.9	16.6	17.9	41.3	100.0
Mulher	4.7	10.9	12.5	24.2	47.7	100.0
<b>Estado civil</b>						
Solteiro	0.9	0.0	3.5	2.7	92.9	100.0
Casado	11.6	16.2	19.5	22.5	30.2	100.0
Casado em poligâmia	12.5	12.5	0.0	0.0	75.0	100.0
Viuvo/ sep/div	6.6	14.3	12.1	20.9	46.2	100.0
<b>Nível mais alto de educação</b>						
Nenhum	12.3	19.9	13.7	16.4	37.7	100.0
Primario	16.7	20.8	16.7	15.0	30.8	100.0
Secundário et mais	33.3	0.0	0.0	0.0	66.7	100.0
Técnico	6.5	9.8	16.4	20.8	46.5	100.0
Outros	0.0	5.3	26.3	36.8	31.6	100.0
<b>Urbano</b>	8.5	12.0	16.8	24.1	38.6	100.0
<b>Inserção laboral</b>						
Sector público	6.1	18.4	20.4	22.4	32.7	100.0
Sector privado formal	2.8	16.7	13.9	27.8	38.9	100.0
Sector privado informal	0.0	0.0	22.2	33.3	44.4	100.0
Agricultura a conta própria	50.0	25.0	0.0	25.0	0.0	100.0
Outros a conta própria	7.5	9.2	17.8	22.4	43.1	100.0
Desempregados	18.6	14.0	11.6	25.6	30.2	100.0
Outros	0.0	0.0	0.0	0.0	0.0	0.0
<b>Sexo</b>						
Homem	10.3	13.0	18.0	23.8	34.9	100.0
Mulher	0.0	7.3	10.9	25.5	56.4	100.0
<b>Estado civil</b>						
Solteiro	2.5	0.0	5.0	7.5	85.0	100.0
Casado	11.0	15.9	19.8	26.9	26.4	100.0
Casado em poligâmia	16.7	0.0	0.0	33.3	50.0	100.0
Viuvo/ sep/div	0.0	4.7	14.0	23.3	58.1	100.0
<b>Nível mais alto de educação</b>						
Nenhum	8.6	12.9	17.1	21.4	40.0	100.0
Primario	18.4	10.2	18.4	30.6	22.4	100.0
Secundário et mais	0.0	0.0	0.0	0.0	0.0	0.0
Técnico	5.5	12.6	17.6	22.0	42.3	100.0
Outros	16.7	0.0	0.0	16.7	66.7	100.0
Cell format:	PC6	PC6	PC6	PC6	PC6	PC6

1st Quintile: Quintile = 1

2nd Quintile: Quintile = 2

3rd Quintile: Quintile = 3

4th Quintile: Quintile = 4

5th Quintile: Quintile = 5

**Tabela 2.1 - Distribuição percentual dos agregados familiares segundo percepção da situação económica da comunidade comparando com o ano antes do inquérito**

	Muito pior	Pior	Mesma	Melhor	Muito Melhor	Não sabe	Total
<b>Total</b>	3.1	15.2	44.9	30.7	1.5	4.6	100.0
<b>Área de residência e pobreza</b>							
Rural	2.6	15.9	45.9	29.5	2.0	4.1	100.0
Pobres rurais	8.7	26.1	40.6	23.2	0.0	1.4	100.0
Urbano	4.4	13.6	42.4	33.5	0.3	5.7	100.0
Pobres urbanos	3.7	18.5	40.7	22.2	0.0	14.8	100.0
<b>Provincia de residencia</b>							
Niassa	3.8	13.3	44.5	31.6	2.0	4.7	100.0
Cabo Delgado	2.4	17.2	45.3	29.8	1.0	4.3	100.0
Nampula	3.8	13.3	44.5	31.6	2.0	4.7	100.0
Zambézia	2.4	17.2	45.3	29.8	1.0	4.3	100.0
Tete	3.8	13.3	44.5	31.6	2.0	4.7	100.0
Manica	2.4	17.2	45.3	29.8	1.0	4.3	100.0
Sofala	3.8	13.3	44.5	31.6	2.0	4.7	100.0
Inhambane	2.4	17.2	45.3	29.8	1.0	4.3	100.0
Gaza	3.8	13.3	44.5	31.6	2.0	4.7	100.0
Maputo Provincia	2.4	17.2	45.3	29.8	1.0	4.3	100.0
Maputo Cidade	3.8	13.3	44.5	31.6	2.0	4.7	100.0
<b>Tamanho de agregado</b>							
1-2	4.4	12.0	45.8	31.7	1.6	4.4	100.0
3-4	1.0	16.4	44.7	30.3	2.3	5.3	100.0
5-6	4.1	13.9	41.9	34.1	1.7	4.4	100.0
7+	3.4	19.0	48.3	25.4	0.0	3.9	100.0
<b>Tamanho de terra que o agregado possui</b>							
Sem terra	3.0	15.3	44.6	31.3	1.5	4.4	100.0
< 1 ha	4.3	21.7	56.5	13.0	4.3	0.0	100.0
1-1.99 ha	20.0	10.0	40.0	30.0	0.0	0.0	100.0
2-3.99 ha	0.0	0.0	44.4	22.2	0.0	33.3	100.0
4-5.99 ha	0.0	0.0	0.0	100.0	0.0	0.0	100.0
6+ ha	0.0	0.0	75.0	0.0	0.0	25.0	100.0
<b>Tipo de animais que o agregado possui</b>							
Nenhum	3.0	15.3	44.4	31.2	1.6	4.5	100.0
Só pequenos	9.4	12.5	50.0	25.0	0.0	3.1	100.0
Só grandes	0.0	20.0	60.0	20.0	0.0	0.0	100.0
Ambos	0.0	0.0	83.3	0.0	0.0	16.7	100.0
<b>Inserção laboral</b>							
Sector público	1.2	11.8	47.2	32.3	3.7	3.7	100.0
Sector privado formal	3.0	17.7	43.3	28.7	1.2	6.1	100.0
Sector privado informal	0.0	12.5	43.8	37.5	0.0	6.3	100.0
Agricultura a conta própria	3.3	3.3	56.7	20.0	3.3	13.3	100.0
Outros a conta própria	3.6	14.5	43.8	33.0	0.9	4.2	100.0
Desempregados	4.1	21.4	45.5	24.1	1.4	3.4	100.0
Outros	0.0	0.0	100.0	0.0	0.0	0.0	100.0
<b>Sexo do chefe de agregado</b>							
Homem	3.1	14.6	45.7	31.0	1.1	4.5	100.0
Mulher	3.3	18.0	41.0	29.5	3.3	4.9	100.0
<b>Estado civil do chefe de agregado</b>							
Solteiro	2.6	13.7	48.4	30.1	2.0	3.3	100.0
Casado	2.9	14.8	45.5	31.2	1.1	4.5	100.0
Casado em poligamia	7.1	21.4	28.6	35.7	0.0	7.1	100.0
Viuvo/sep/div	4.5	18.7	39.6	28.4	3.0	6.0	100.0
<b>Nível de educação mais alto do chefe do agregado</b>							
Nenhum	2.8	17.6	46.3	26.4	0.9	6.0	100.0
Primario	5.3	14.2	46.7	27.8	1.2	4.7	100.0
Secundário et mais	0.0	0.0	33.3	66.7	0.0	0.0	100.0
Técnico	3.0	14.3	43.0	33.6	2.0	4.3	100.0
Outros	0.0	20.0	56.0	24.0	0.0	0.0	100.0

Base for percentage is all households

Much worse: F16=1  
Worse: F16=2  
Same: F16=3  
Better: F16=4  
Much better: F16=5  
Don't know: F16=6  
Total cells are formatted CJ; all others are formatted PC8

**Tabela 2.2 - Distribuição percentual dos agregados familiares segundo percepção da situação economia do agregado familiar comparando com o ano antes de inquerito**

	Muito pior	Pior	Mesma	Melhor	Muito Melhor	Não sabe	Total
<b>Total</b>	2.4	14.3	41.7	38.0	3.3	0.3	100.0
<b>Área de residência e pobreza</b>							
Rural	2.2	14.4	43.4	36.4	3.4	0.3	100.0
Pobres rurais	5.8	27.5	33.3	29.0	4.3	0.0	100.0
Urbano	2.8	14.2	37.7	41.8	3.2	0.3	100.0
Pobres urbanos	3.7	25.9	37.0	33.3	0.0	0.0	100.0
<b>Provincia de residencia</b>							
Niassa	3.8	14.1	40.5	37.0	4.6	0.0	100.0
Cabo Delgado	0.8	14.6	42.9	39.1	2.0	0.6	100.0
Nampula	3.8	14.1	40.5	37.0	4.6	0.0	100.0
Zambézia	0.8	14.6	42.9	39.1	2.0	0.6	100.0
Tete	3.8	14.1	40.5	37.0	4.6	0.0	100.0
Manica	0.8	14.6	42.9	39.1	2.0	0.6	100.0
Sofala	3.8	14.1	40.5	37.0	4.6	0.0	100.0
Inhambane	0.8	14.6	42.9	39.1	2.0	0.6	100.0
Gaza	3.8	14.1	40.5	37.0	4.6	0.0	100.0
Maputo Provincia	0.8	14.6	42.9	39.1	2.0	0.6	100.0
Maputo Cidade	3.8	14.1	40.5	37.0	4.6	0.0	100.0
<b>Tamanho de agregado</b>							
1-2	2.4	10.4	49.4	34.5	2.8	0.4	100.0
3-4	1.0	12.2	38.8	43.4	3.9	0.7	100.0
5-6	3.0	14.5	37.2	42.2	3.0	0.0	100.0
7+	3.4	22.0	42.9	28.3	3.4	0.0	100.0
<b>Tamanho de terra que o agregado possui</b>							
Sem terra	2.4	14.4	41.8	37.8	3.3	0.3	100.0
< 1 ha	0.0	17.4	43.5	34.8	4.3	0.0	100.0
1-1.99 ha	10.0	20.0	30.0	30.0	10.0	0.0	100.0
2-3.99 ha	0.0	0.0	22.2	77.8	0.0	0.0	100.0
4-5.99 ha	0.0	0.0	0.0	100.0	0.0	0.0	100.0
6+ ha	0.0	0.0	75.0	25.0	0.0	0.0	100.0
<b>Tipo de animais que o agregado possui</b>							
Nenhum	2.4	14.2	42.1	37.5	3.5	0.3	100.0
Só pequenos	3.1	18.8	18.8	59.4	0.0	0.0	100.0
Só grandes	0.0	20.0	20.0	60.0	0.0	0.0	100.0
Ambos	0.0	0.0	100.0	0.0	0.0	0.0	100.0
<b>Inserção laboral</b>							
Sector público	1.2	12.4	37.9	41.0	7.5	0.0	100.0
Sector privado formal	2.4	16.5	40.2	37.2	3.7	0.0	100.0
Sector privado informal	0.0	12.5	50.0	37.5	0.0	0.0	100.0
Agricultura a conta propria	0.0	0.0	63.3	36.7	0.0	0.0	100.0
Outros a conta propria	1.9	13.4	40.6	40.9	2.6	0.6	100.0
Desempregados	6.2	20.7	46.2	24.8	2.1	0.0	100.0
Outros	0.0	0.0	100.0	0.0	0.0	0.0	100.0
<b>Sexo do chefe de agregado</b>							
Homem	2.3	14.2	41.6	38.2	3.3	0.3	100.0
Mulher	2.7	14.8	42.1	37.2	3.3	0.0	100.0
<b>Estado civil do chefe de agregado</b>							
Solteiro	2.0	13.1	48.4	32.0	4.6	0.0	100.0
Casado	2.3	14.5	40.3	39.3	3.2	0.4	100.0
Casado em poligamia	7.1	21.4	35.7	35.7	0.0	0.0	100.0
Viuvo/sep/div	3.0	14.2	42.5	38.1	2.2	0.0	100.0
<b>Nível de educação mais alto do chefe do agregado</b>							
Nenhum	2.8	17.1	45.8	33.3	0.9	0.0	100.0
Primario	2.4	14.8	41.4	37.3	4.1	0.0	100.0
Secundário et mais	0.0	0.0	66.7	33.3	0.0	0.0	100.0
Técnico	2.1	12.6	41.0	40.0	3.8	0.5	100.0
Outros	0.0	24.0	40.0	36.0	0.0	0.0	100.0

Base for percentage is all households

Much worse: F15=1

Worse: F15=2

Same: F15=3

Better: F15=4

Much better: F15=5

Don't know: F15=6

Total cells are formatted CJ; all others are formatted PC8

**Tabela 2.3 - Distribuição percentual dos agregados familiares segundo mudanças de posse de terra no ano passado**

	Não posse	Menor	Mesmo	Maior	Não sabe	Total
<b>Total</b>	95.5	0.3	4.0	0.2	0.0	100.0
<b>Área de residência e pobreza</b>						
Rural	95.3	0.3	4.3	0.1	0.0	100.0
Pobres rurais	94.2	0.0	5.8	0.0	0.0	100.0
Urbano	96.2	0.3	3.2	0.3	0.0	100.0
Pobres urbanos	85.2	3.7	11.1	0.0	0.0	100.0
<b>Provincia de residencia</b>						
Niassa	95.3	0.4	4.2	0.2	0.0	100.0
Cabo Delgado	95.8	0.2	3.8	0.2	0.0	100.0
Nampula	95.3	0.4	4.2	0.2	0.0	100.0
Zambézia	95.8	0.2	3.8	0.2	0.0	100.0
Tete	95.3	0.4	4.2	0.2	0.0	100.0
Manica	95.8	0.2	3.8	0.2	0.0	100.0
Sofala	95.3	0.4	4.2	0.2	0.0	100.0
Inhambane	95.8	0.2	3.8	0.2	0.0	100.0
Gaza	95.3	0.4	4.2	0.2	0.0	100.0
Maputo Provincia	95.8	0.2	3.8	0.2	0.0	100.0
Maputo Cidade	95.3	0.4	4.2	0.2	0.0	100.0
<b>Tamanho de agregado</b>						
1-2	97.2	0.0	2.4	0.4	0.0	100.0
3-4	97.0	0.3	2.3	0.3	0.0	100.0
5-6	94.3	0.0	5.7	0.0	0.0	100.0
7+	93.2	1.0	5.9	0.0	0.0	100.0
<b>Tamanho de terra que o agregado possui</b>						
Sem terra	100.0	0.0	0.0	0.0	0.0	100.0
< 1 ha	0.0	4.3	91.3	4.3	0.0	100.0
1-1.99 ha	0.0	0.0	100.0	0.0	0.0	100.0
2-3.99 ha	0.0	22.2	66.7	11.1	0.0	100.0
4-5.99 ha	0.0	0.0	100.0	0.0	0.0	100.0
6+ ha	0.0	0.0	100.0	0.0	0.0	100.0
<b>Tipo de animais que o agregado possui</b>						
Nenhum	96.5	0.2	3.1	0.2	0.0	100.0
Só pequenos	71.9	0.0	28.1	0.0	0.0	100.0
Só grandes	100.0	0.0	0.0	0.0	0.0	100.0
Ambos	50.0	16.7	33.3	0.0	0.0	100.0
<b>Inserção laboral</b>						
Sector público	96.3	0.0	2.5	1.2	0.0	100.0
Sector privado formal	97.6	0.0	2.4	0.0	0.0	100.0
Sector privado informal	100.0	0.0	0.0	0.0	0.0	100.0
Agricultura a conta própria	56.7	0.0	43.3	0.0	0.0	100.0
Outros a conta própria	96.8	0.4	2.8	0.0	0.0	100.0
Desempregados	95.2	0.7	4.1	0.0	0.0	100.0
Outros	100.0	0.0	0.0	0.0	0.0	100.0
<b>Sexo do chefe de agregado</b>						
Homem	95.2	0.3	4.2	0.2	0.0	100.0
Mulher	97.3	0.0	2.7	0.0	0.0	100.0
<b>Estado civil do chefe de agregado</b>						
Solteiro	98.7	0.0	1.3	0.0	0.0	100.0
Casado	94.9	0.4	4.4	0.3	0.0	100.0
Casado em poligamia	85.7	0.0	14.3	0.0	0.0	100.0
Viuvo/sep/div	96.3	0.0	3.7	0.0	0.0	100.0
<b>Nível de educação mais alto do chefe do agregado</b>						
Nenhum	91.7	0.9	7.4	0.0	0.0	100.0
Primário	93.5	0.0	6.5	0.0	0.0	100.0
Secundário et mais	100.0	0.0	0.0	0.0	0.0	100.0
Técnico	97.4	0.2	2.1	0.3	0.0	100.0
Outros	100.0	0.0	0.0	0.0	0.0	100.0

Base for percentage is all households

No holding: F3=0

Less: F3&gt;0, F4=1



Same:  $F3 > 0$ ,  $F4 = 2$

More:  $F3 > 0$ ,  $F4 = 3$

Don't know:  $F3 > 0$ ,  $F4 = 4$

Total cells are formatted CJ; all others are formatted PC8

**Tabela 2.4 - Distribuição percentual dos agregados familiares segundo a dificuldade de satisfazer as necessidades alimentares do agregado durante o ano antes de inquerito**

	Nunca	Raramente	Algumas vezes	Muitas vezes	Sempre	Total
<b>Total</b>	19.4	8.8	52.5	10.8	8.5	100.0
<b>Área de residência e pobreza</b>						
Rural	21.0	8.0	52.8	10.2	8.0	100.0
Pobres rurais	24.6	10.1	40.6	14.5	10.1	100.0
Urbano	15.8	10.8	51.9	12.0	9.5	100.0
Pobres urbanos	7.4	3.7	44.4	14.8	29.6	100.0
<b>Provincia de residencia</b>						
Niassa	21.9	8.8	49.2	12.4	7.7	100.0
Cabo Delgado	16.7	8.9	56.2	8.9	9.3	100.0
Nampula	21.9	8.8	49.2	12.4	7.7	100.0
Zambézia	16.7	8.9	56.2	8.9	9.3	100.0
Tete	21.9	8.8	49.2	12.4	7.7	100.0
Manica	16.7	8.9	56.2	8.9	9.3	100.0
Sofala	21.9	8.8	49.2	12.4	7.7	100.0
Inhambane	16.7	8.9	56.2	8.9	9.3	100.0
Gaza	21.9	8.8	49.2	12.4	7.7	100.0
Maputo Provincia	16.7	8.9	56.2	8.9	9.3	100.0
Maputo Cidade	21.9	8.8	49.2	12.4	7.7	100.0
<b>Tamanho de agregado</b>						
1-2	23.1	10.5	50.6	8.5	7.3	100.0
3-4	20.1	7.9	54.8	9.6	7.6	100.0
5-6	17.9	8.4	53.7	11.5	8.4	100.0
7+	16.1	8.8	49.8	14.1	11.2	100.0
<b>Tamanho de terra que o agregado possui</b>						
Sem terra	19.8	9.1	52.2	10.6	8.4	100.0
< 1 ha	8.7	0.0	78.3	8.7	4.3	100.0
1-1.99 ha	20.0	10.0	30.0	30.0	10.0	100.0
2-3.99 ha	0.0	0.0	55.6	22.2	22.2	100.0
4-5.99 ha	0.0	0.0	0.0	0.0	100.0	100.0
6+ ha	25.0	25.0	50.0	0.0	0.0	100.0
<b>Tipo de animais que o agregado possui</b>						
Nenhum	19.7	8.7	52.3	10.6	8.6	100.0
Só pequenos	16.1	9.7	54.8	12.9	6.5	100.0
Só grandes	0.0	20.0	80.0	0.0	0.0	100.0
Ambos	0.0	16.7	50.0	33.3	0.0	100.0
<b>Inserção laboral</b>						
Sector público	28.0	6.2	53.4	4.3	8.1	100.0
Sector privado formal	17.7	9.1	56.7	9.8	6.7	100.0
Sector privado informal	12.5	12.5	56.3	6.3	12.5	100.0
Agricultura a conta propria	16.7	6.7	63.3	6.7	6.7	100.0
Outros a conta propria	19.4	10.1	51.2	11.0	8.3	100.0
Desempregados	13.1	7.6	49.0	18.6	11.7	100.0
Outros	100.0	0.0	0.0	0.0	0.0	100.0
<b>Sexo do chefe de agregado</b>						
Homem	20.0	8.3	53.0	10.2	8.4	100.0
Mulher	16.5	11.5	50.0	13.2	8.8	100.0
<b>Estado civil do chefe de agregado</b>						
Solteiro	19.7	9.9	57.2	5.9	7.2	100.0
Casado	19.9	8.5	51.9	10.7	9.1	100.0
Casado em poligamia	14.3	14.3	57.1	14.3	0.0	100.0
Viuvo/sep/div	17.3	8.3	50.4	16.5	7.5	100.0
<b>Nível de educação mais alto do chefe do agregado</b>						
Nenhum	12.6	7.9	53.5	14.4	11.6	100.0
Primario	13.6	4.1	57.4	14.8	10.1	100.0
Secundário et mais	0.0	33.3	66.7	0.0	0.0	100.0
Técnico	23.7	10.7	50.2	8.6	6.9	100.0
Outros	16.0	8.0	52.0	12.0	12.0	100.0

Base for percentage is all households

Never: F14=1  
Seldom: F14=2  
Sometimes: F14=3  
Often: F14=4  
Always: F14=5  
Total cells are formatted CJ; all others are formatted PC8

Moçambique Indicadores Básicos de Bem-estar (QUIBB) Inquérito 2000-2001  
**Tabela 2.5 - A percentagem dos agregados familiares que possuem vários bens**

	Casa	Terra	Animais			Carro	Moto	Bicicleta
			Pequenos	Grandes	Ambos			
<b>Total</b>	18.7	4.5	3.0	0.5	0.6	16.4	3.1	2.8
<b>Área de residência e pobreza</b>								
Rural	20.1	4.7	3.1	0.5	0.7	17.5	3.3	3.4
Pobres rurais	40.6	5.8	5.8	2.9	0.0	18.8	2.9	4.3
Urbano	15.5	3.8	2.8	0.3	0.3	13.9	2.8	1.6
Pobres urbanos	44.4	14.8	7.4	0.0	3.7	18.5	0.0	0.0
<b>Provincia de residência</b>								
Niassa	18.6	4.7	3.5	0.5	0.7	19.2	2.9	3.8
Cabo Delgado	18.8	4.2	2.6	0.4	0.4	13.4	3.4	1.8
Nampula	18.6	4.7	3.5	0.5	0.7	19.2	2.9	3.8
Zambézia	18.8	4.2	2.6	0.4	0.4	13.4	3.4	1.8
Tete	18.6	4.7	3.5	0.5	0.7	19.2	2.9	3.8
Manica	18.8	4.2	2.6	0.4	0.4	13.4	3.4	1.8
Sofala	18.6	4.7	3.5	0.5	0.7	19.2	2.9	3.8
Inhambane	18.8	4.2	2.6	0.4	0.4	13.4	3.4	1.8
Gaza	18.6	4.7	3.5	0.5	0.7	19.2	2.9	3.8
Maputo Provincia	18.8	4.2	2.6	0.4	0.4	13.4	3.4	1.8
Maputo Cidade	18.6	4.7	3.5	0.5	0.7	19.2	2.9	3.8
<b>Tamanho de agregado</b>								
1-2	14.9	2.8	1.2	0.8	0.4	10.0	4.0	2.0
3-4	15.1	3.0	3.0	0.3	0.3	15.5	3.3	2.6
5-6	15.5	5.7	4.1	0.0	0.0	17.6	3.0	2.4
7+	33.2	6.8	3.9	1.0	2.0	23.9	2.0	4.9
<b>Inserção laboral</b>								
Sector público	11.2	3.7	1.2	0.0	0.0	19.3	2.5	5.0
Sector privado formal	4.3	2.4	1.2	0.6	0.6	23.8	3.0	1.2
Sector privado informal	0.0	0.0	6.3	0.0	0.0	0.0	6.3	0.0
Agricultura a conta propria	73.3	43.3	20.0	3.3	6.7	3.3	3.3	3.3
Outros a conta propria	17.7	3.2	3.2	0.6	0.4	16.6	3.8	2.8
Desempregados	37.2	4.8	2.8	0.0	0.7	7.6	1.4	2.8
Outros	100.0	0.0	0.0	0.0	0.0	100.0	0.0	0.0
<b>Sexo do chefe de agregado</b>								
Homem	16.1	4.8	3.0	0.6	0.7	18.5	3.2	2.6
Mulher	31.1	2.7	3.3	0.0	0.0	6.6	2.7	3.8

Base for percentage is all households

Home: F1=1

Land: F3>0

Small livestock: F10>0, F8=0

Large livestock: F8>0, F10=0

Both: F8>0, F10>0

Car: F12k=1

Motorcycle: F12j=1

Bicycle: F12i=1

Cells are formatted PC7

Moçambique Indicadores Básicos de Bem-estar (QUIBB) Inquérito 2000-2001

**Tabela 2.6 - Distribuição percentual dos agregados familiares segundo a quem pertence a habitação onde vive o agregado**

	Propria	Alugada	Não paga	Outro	Total
<b>Total</b>	18.7	71.3	10.0	0.1	100.0
<b>Área de residencia e pobreza</b>					
Rural	20.1	69.4	10.4	0.1	100.0
Pobres rurais	40.6	55.1	4.3	0.0	100.0
Urbano	15.5	75.6	8.9	0.0	100.0
Pobres urbanos	44.4	48.1	7.4	0.0	100.0
<b>Provincia de residencia</b>					
Niassa	18.6	70.8	10.6	0.0	100.0
Cabo Delgado	18.8	71.7	9.3	0.2	100.0
Nampula	18.6	70.8	10.6	0.0	100.0
Zambézia	18.8	71.7	9.3	0.2	100.0
Tete	18.6	70.8	10.6	0.0	100.0
Manica	18.8	71.7	9.3	0.2	100.0
Sofala	18.6	70.8	10.6	0.0	100.0
Inhambane	18.8	71.7	9.3	0.2	100.0
Gaza	18.6	70.8	10.6	0.0	100.0
Maputo Provincia	18.8	71.7	9.3	0.2	100.0
Maputo Cidade	18.6	70.8	10.6	0.0	100.0
<b>Tamanho de agregado</b>					
1-2	14.9	69.5	15.3	0.4	100.0
3-4	15.1	74.3	10.5	0.0	100.0
5-6	15.5	75.3	9.1	0.0	100.0
7+	33.2	62.9	3.9	0.0	100.0
<b>Inserção laboral</b>					
Sector público	11.2	77.6	11.2	0.0	100.0
Sector privado formal	4.3	84.1	11.0	0.6	100.0
Sector privado informal	0.0	93.8	6.3	0.0	100.0
Agricultura a conta propria	73.3	10.0	16.7	0.0	100.0
Outros a conta propria	17.7	73.2	9.1	0.0	100.0
Desempregados	37.2	52.4	10.3	0.0	100.0
Outros	100.0	0.0	0.0	0.0	100.0
<b>Sexo do chefe de agregado</b>					
Homem	16.1	74.4	9.4	0.1	100.0
Mulher	31.1	56.3	12.6	0.0	100.0

Base for percentage is all households

Own: F1=1

Rent: F1=2

Free: F1=3

Other: F1=4

Total cells are formatted CJ; all others are formatted PC8

Moçambique Indicadores Básicos de Bem-estar (QUIBB) Inquérito 2000-2001

**Tabela 2.7 - Distribuição percentual dos agregados familiares segundo materias usados para telhado e paredes**

NOT TRANSLATED--->	Telhado				Total	Paredes				Total
	Thatch/wood	Iron sheets	Asbestos	Other		Mud	Stone	Bamboo	Other	
<b>Total</b>	1.4	67.4	23.9	7.3	100.0	3.9	91.9	2.7	1.5	100.0
<b>Área de residencia e pobreza</b>										
Rural	1.8	67.2	23.2	7.9	100.0	3.1	91.6	3.5	1.8	100.0
Pobres rurais	0.0	69.6	24.6	5.8	100.0	7.2	92.8	0.0	0.0	100.0
Urbano	0.6	67.7	25.6	6.0	100.0	5.7	92.7	0.6	0.9	100.0
Pobres urbanos	0.0	70.4	22.2	7.4	100.0	3.7	96.3	0.0	0.0	100.0
<b>Provincia de residencia</b>										
Niassa	0.5	64.4	26.1	8.9	100.0	4.2	93.2	0.7	1.8	100.0
Cabo Delgado	2.4	70.6	21.5	5.5	100.0	3.6	90.5	4.7	1.2	100.0
Nampula	0.5	64.4	26.1	8.9	100.0	4.2	93.2	0.7	1.8	100.0
Zambézia	2.4	70.6	21.5	5.5	100.0	3.6	90.5	4.7	1.2	100.0
Tete	0.5	64.4	26.1	8.9	100.0	4.2	93.2	0.7	1.8	100.0
Manica	2.4	70.6	21.5	5.5	100.0	3.6	90.5	4.7	1.2	100.0
Sofala	0.5	64.4	26.1	8.9	100.0	4.2	93.2	0.7	1.8	100.0
Inhambane	2.4	70.6	21.5	5.5	100.0	3.6	90.5	4.7	1.2	100.0
Gaza	0.5	64.4	26.1	8.9	100.0	4.2	93.2	0.7	1.8	100.0
Maputo Provincia	2.4	70.6	21.5	5.5	100.0	3.6	90.5	4.7	1.2	100.0
Maputo Cidade	0.5	64.4	26.1	8.9	100.0	4.2	93.2	0.7	1.8	100.0
<b>Tamanho de agregado</b>										
1-2	2.8	73.5	16.5	7.2	100.0	4.4	87.6	4.8	3.2	100.0
3-4	1.6	67.8	23.0	7.6	100.0	3.9	92.4	2.6	1.0	100.0
5-6	0.3	60.8	31.4	7.4	100.0	3.0	94.3	1.7	1.0	100.0
7+	1.0	68.8	23.4	6.8	100.0	4.4	93.2	1.5	1.0	100.0
<b>Inserção laboral</b>										
Sector público	0.0	58.4	34.2	7.5	100.0	3.7	88.2	6.2	1.9	100.0
Sector privado formal	0.6	65.2	26.2	7.9	100.0	5.5	92.1	0.6	1.8	100.0
Sector privado informal	0.0	75.0	25.0	0.0	100.0	0.0	100.0	0.0	0.0	100.0
Agricultura a conta propria	33.3	66.7	0.0	0.0	100.0	3.3	63.3	33.3	0.0	100.0
Outros a conta propria	0.6	71.3	20.0	8.1	100.0	3.8	94.2	0.8	1.3	100.0
Desempregados	0.0	66.2	27.6	6.2	100.0	3.4	93.1	2.1	1.4	100.0
Outros	0.0	0.0	100.0	0.0	100.0	0.0	100.0	0.0	0.0	100.0
<b>Sexo do chefe de agregado</b>										
Homem	1.6	67.0	24.8	6.5	100.0	3.7	92.3	2.6	1.4	100.0
Mulher	0.5	68.9	19.7	10.9	100.0	4.9	90.2	2.7	2.2	100.0

Base for percentage is all households

Roof: Thatch/wood: G1=2-3

Roof: Iron sheets: G1=4

Roof: Asbestos: G1=7

Roof: Other: G1=1,5,6,8

Walls: Mud: G2=1

Walls: Stone: G2=2-4

Walls: Bamboo: G2=5

Walls: Other: G2=6-8

Total cells are formatted CJ; Roof cells are PC5; Walls cells are PC3

**Table 2.8 - Percent distribution of households by source of drinking water and type of toilet**

	Fonte de água				Total	Tipo de saneamento				Total
	Água canaliz.	Poço	Comprada	Outro		Autoclismo	IPL	Outro	Nenhum	
<b>Total</b>	58.0	13.7	0.1	28.3	100.0	4.2	2.9	90.2	2.7	100.0
<b>Área de residência e pobreza</b>										
Rural	61.5	13.4	0.1	24.9	100.0	4.7	2.4	89.0	3.8	100.0
Pobres rurais	47.8	21.7	1.4	29.0	100.0	7.2	4.3	87.0	1.4	100.0
Urbano	49.7	14.2	0.0	36.1	100.0	2.8	4.1	93.0	0.0	100.0
Pobres urbanos	37.0	14.8	0.0	48.1	100.0	3.7	11.1	85.2	0.0	100.0
<b>Provincia de residência</b>										
Niassa	60.4	16.2	0.2	23.2	100.0	3.6	2.9	91.2	2.2	100.0
Cabo Delgado	55.3	10.9	0.0	33.8	100.0	4.7	3.0	89.1	3.2	100.0
Nampula	60.4	16.2	0.2	23.2	100.0	3.6	2.9	91.2	2.2	100.0
Zambézia	55.3	10.9	0.0	33.8	100.0	4.7	3.0	89.1	3.2	100.0
Tete	60.4	16.2	0.2	23.2	100.0	3.6	2.9	91.2	2.2	100.0
Manica	55.3	10.9	0.0	33.8	100.0	4.7	3.0	89.1	3.2	100.0
Sofala	60.4	16.2	0.2	23.2	100.0	3.6	2.9	91.2	2.2	100.0
Inhambane	55.3	10.9	0.0	33.8	100.0	4.7	3.0	89.1	3.2	100.0
Gaza	60.4	16.2	0.2	23.2	100.0	3.6	2.9	91.2	2.2	100.0
Maputo Provincia	55.3	10.9	0.0	33.8	100.0	4.7	3.0	89.1	3.2	100.0
Maputo Cidade	60.4	16.2	0.2	23.2	100.0	3.6	2.9	91.2	2.2	100.0
<b>Tamanho de agregado</b>										
1-2	62.7	14.9	0.0	22.5	100.0	2.8	4.0	88.4	4.8	100.0
3-4	53.9	14.8	0.0	31.3	100.0	3.6	2.0	92.4	2.0	100.0
5-6	60.8	9.5	0.0	29.7	100.0	4.4	2.4	91.6	1.7	100.0
7+	54.1	16.6	0.5	28.8	100.0	6.3	3.9	87.3	2.4	100.0
<b>Inserção laboral</b>										
Sector público	68.3	9.3	0.0	22.4	100.0	9.3	2.5	87.0	1.2	100.0
Sector privado formal	58.5	14.0	0.6	26.8	100.0	3.7	2.4	89.6	4.3	100.0
Sector privado informal	37.5	18.8	0.0	43.8	100.0	0.0	6.3	93.8	0.0	100.0
Agricultura a conta propria	40.0	6.7	0.0	53.3	100.0	0.0	0.0	63.3	36.7	100.0
Outros a conta propria	55.3	15.5	0.0	29.2	100.0	3.0	2.8	93.0	1.1	100.0
Desempregados	61.4	13.1	0.0	25.5	100.0	4.1	4.8	89.7	1.4	100.0
Outros	100.0	0.0	0.0	0.0	100.0	0.0	0.0	100.0	0.0	100.0
<b>Sexo do chefe de agregado</b>										
Homem	58.4	13.5	0.1	27.9	100.0	3.8	2.8	90.5	3.0	100.0
Mulher	55.7	14.2	0.0	30.1	100.0	6.0	3.8	89.1	1.1	100.0

Base for percentage is all households

Water: Piped: G3=1-2

Water: Well: G3=3

Water: Purchased: G3=6

Water: Other: G3=4-5, 7

Toilet: Flush: G4=2-3

Toilet: IPL: G4=7

Toilet: G4=4-6, 8

Toilet: None: G4=1

Total cells are formatted CJ; all others are formatted PC4

**Tabela 2.9 - Distribuição percentual dos agregados familiares segundo tipo de energia utilizado para iluminação e cozinhar**

	Energia utilizada para iluminação					Energia utilizada para cozinhar				
	Electr.	Petrol/gas	Vela	Outros	Total	Electr.	Petrol/gas	Lenha/ carvão	Outro	Total
<b>Total</b>	84.1	6.2	6.4	3.4	100.0	0.2	92.9	6.5	0.4	100.0
<b>Área de residencia e pobreza</b>										
Rural	82.2	6.2	7.5	4.1	100.0	0.3	93.2	6.2	0.3	100.0
Pobres rurais	87.0	10.1	2.9	0.0	100.0	0.0	97.1	2.9	0.0	100.0
Urbano	88.3	6.0	3.8	1.9	100.0	0.0	92.1	7.3	0.6	100.0
Pobres urbanos	81.5	14.8	0.0	3.7	100.0	0.0	88.9	11.1	0.0	100.0
<b>Provincia de residencia</b>										
Niassa	83.8	5.5	7.7	3.1	100.0	0.2	94.0	5.5	0.4	100.0
Cabo Delgado	84.4	6.9	4.9	3.8	100.0	0.2	91.7	7.7	0.4	100.0
Nampula	83.8	5.5	7.7	3.1	100.0	0.2	94.0	5.5	0.4	100.0
Zambézia	84.4	6.9	4.9	3.8	100.0	0.2	91.7	7.7	0.4	100.0
Tete	83.8	5.5	7.7	3.1	100.0	0.2	94.0	5.5	0.4	100.0
Manica	84.4	6.9	4.9	3.8	100.0	0.2	91.7	7.7	0.4	100.0
Sofala	83.8	5.5	7.7	3.1	100.0	0.2	94.0	5.5	0.4	100.0
Inhambane	84.4	6.9	4.9	3.8	100.0	0.2	91.7	7.7	0.4	100.0
Gaza	83.8	5.5	7.7	3.1	100.0	0.2	94.0	5.5	0.4	100.0
Maputo Provincia	84.4	6.9	4.9	3.8	100.0	0.2	91.7	7.7	0.4	100.0
Maputo Cidade	83.8	5.5	7.7	3.1	100.0	0.2	94.0	5.5	0.4	100.0
<b>Tamanho de agregado</b>										
1-2	79.9	6.0	5.6	8.4	100.0	0.4	92.0	7.2	0.4	100.0
3-4	85.2	5.6	6.9	2.3	100.0	0.0	92.1	7.6	0.3	100.0
5-6	84.5	5.7	8.1	1.7	100.0	0.3	93.6	5.4	0.7	100.0
7+	86.8	7.8	3.9	1.5	100.0	0.0	94.1	5.9	0.0	100.0
<b>Inserção laboral</b>										
Sector público	79.5	1.2	9.3	9.9	100.0	0.0	94.4	4.3	1.2	100.0
Sector privado formal	82.9	4.3	9.1	3.7	100.0	1.2	96.3	2.4	0.0	100.0
Sector privado informal	93.8	6.3	0.0	0.0	100.0	0.0	93.8	6.3	0.0	100.0
Agricultura a conta propria	40.0	60.0	0.0	0.0	100.0	0.0	26.7	73.3	0.0	100.0
Outros a conta propria	87.2	5.5	5.7	1.7	100.0	0.0	94.3	5.3	0.4	100.0
Desempregados	89.0	5.5	2.8	2.8	100.0	0.0	95.2	4.8	0.0	100.0
Outros	0.0	0.0	100.0	0.0	100.0	0.0	100.0	0.0	0.0	100.0
<b>Sexo do chefe de agregado</b>										
Homem	83.9	5.6	6.7	3.8	100.0	0.2	93.6	5.7	0.5	100.0
Mulher	84.7	8.7	4.9	1.6	100.0	0.0	89.6	10.4	0.0	100.0

Base for percentage is all households

Lighting: Electricity: G6=3-4

Lighting: Gas/oil: G6=1-2

Lighting: Candles: G6=6

Lighting: Other: G6=5, 7-8

Cooking: Electricity: G5=5

Cooking: Gas/oil: G5=3-4

Cooking: Wood/charcoal: G5=1-2

Cooking: Other: G5=6-8

Total cells are formatted CJ; all others are formatted PC4



Moçambique Indicadores Básicos de Bem-estar (QUIBB) Inquérito 2000-2001

**Tabela 2.10 - A percentagem dos agregados familiares que possuem artigos domesticos seleccionados**

	Ferro	Máquina de costrura	Congelador	Televisor	Radio	Relógio ou relogio de paredes	Fogão moderno	Cama
<b>Total</b>	4.6	7.7	3.4	2.5	53.4	49.7	14.6	85.1
<b>Área de residencia e pobreza</b>								
Rural	63.7	14.6	47.4	64.8	76.2	89.8	90.5	95.7
Pobres rurais	68.1	14.5	58.0	69.6	71.0	95.7	95.7	98.6
Urbano	60.8	14.6	48.7	67.7	78.5	92.1	94.0	95.9
Pobres urbanos	63.0	14.8	44.4	59.3	74.1	92.6	85.2	100.0
<b>Provincia de residencia</b>								
Niassa	65.1	16.4	50.9	66.2	74.5	91.4	92.3	96.0
Cabo Delgado	60.3	12.6	44.5	65.0	79.4	89.5	90.7	95.5
Nampula	65.1	16.4	50.9	66.2	74.5	91.4	92.3	96.0
Zambézia	60.3	12.6	44.5	65.0	79.4	89.5	90.7	95.5
Tete	65.1	16.4	50.9	66.2	74.5	91.4	92.3	96.0
Manica	60.3	12.6	44.5	65.0	79.4	89.5	90.7	95.5
Sofala	65.1	16.4	50.9	66.2	74.5	91.4	92.3	96.0
Inhambane	60.3	12.6	44.5	65.0	79.4	89.5	90.7	95.5
Gaza	65.1	16.4	50.9	66.2	74.5	91.4	92.3	96.0
Maputo Provincia	60.3	12.6	44.5	65.0	79.4	89.5	90.7	95.5
Maputo Cidade	65.1	16.4	50.9	66.2	74.5	91.4	92.3	96.0
<b>Tamanho de agregado</b>								
1-2	58.2	5.2	38.2	49.4	75.1	85.1	83.1	89.2
3-4	61.2	14.1	44.1	66.1	76.3	89.8	93.8	96.7
5-6	66.9	21.3	55.7	77.0	77.7	94.6	95.6	98.0
7+	64.9	17.1	53.7	68.3	78.5	92.2	92.7	99.0
<b>Inserção laboral</b>								
Sector público	73.9	14.9	63.4	77.6	87.0	94.4	89.4	97.5
Sector privado formal	69.5	17.1	53.0	70.7	86.0	90.9	92.1	92.7
Sector privado informal	43.8	0.0	25.0	50.0	68.8	87.5	100.0	93.8
Agricultura a conta propria	10.0	6.7	13.3	13.3	66.7	83.3	43.3	96.7
Outros a conta propria	61.1	14.2	45.5	65.5	73.6	90.9	94.5	95.7
Desempregados	61.4	17.2	42.1	60.0	71.7	86.9	91.7	97.9
Outros	100.0	0.0	100.0	100.0	100.0	100.0	100.0	100.0
<b>Sexo do chefe de agregado</b>								
Homem	65.8	14.8	50.2	69.3	80.0	91.7	91.6	96.0
Mulher	48.6	13.7	36.6	48.1	61.7	84.7	91.3	94.5

Base for percentage is all households

Iron: F12a=1

Sewing machine: F12g=1

Fridge: F12b=1

Television: F12c=1

Radio: F12e=1

Watch or clock: F12f=1

Modern stove: F12h=1

Bed: F12d=1

All cells are formatted PC6

Moçambique Indicadores Básicos de Bem-estar (QUIBB) Inquérito 2000-2001

**Tabela 2.11 - Distribuição percentual dos agregados familiares segundo tempo(em minutos) leva para chegar à fonte de água e facilidade de saúde mais próxima**

	Fonte de água				Total	Facilidade de saúde				Total
	< 15	15 to 29	30 to 59	60+		< 15	15 to 29	30 to 59	60+	
<b>Total</b>	86.3	10.9	2.3	0.5	100.0	54.5	34.5	10.2	0.8	100.0
<b>Área de residencia e pobreza</b>										
Rural	87.5	9.1	2.7	0.7	100.0	56.1	32.9	10.2	0.8	100.0
Pobres rurais	87.0	10.1	1.4	1.4	100.0	52.2	36.2	11.6	0.0	100.0
Urbano	83.5	15.2	1.3	0.0	100.0	50.6	38.3	10.4	0.6	100.0
Pobres urbanos	77.8	22.2	0.0	0.0	100.0	37.0	40.7	18.5	3.7	100.0
<b>Provincia de residencia</b>										
Niassa	87.6	10.2	1.6	0.5	100.0	53.5	34.1	11.7	0.7	100.0
Cabo Delgado	85.0	11.7	3.0	0.4	100.0	55.5	35.0	8.7	0.8	100.0
Nampula	87.6	10.2	1.6	0.5	100.0	53.5	34.1	11.7	0.7	100.0
Zambézia	85.0	11.7	3.0	0.4	100.0	55.5	35.0	8.7	0.8	100.0
Tete	87.6	10.2	1.6	0.5	100.0	53.5	34.1	11.7	0.7	100.0
Manica	85.0	11.7	3.0	0.4	100.0	55.5	35.0	8.7	0.8	100.0
Sofala	87.6	10.2	1.6	0.5	100.0	53.5	34.1	11.7	0.7	100.0
Inhambane	85.0	11.7	3.0	0.4	100.0	55.5	35.0	8.7	0.8	100.0
Gaza	87.6	10.2	1.6	0.5	100.0	53.5	34.1	11.7	0.7	100.0
Maputo Provincia	85.0	11.7	3.0	0.4	100.0	55.5	35.0	8.7	0.8	100.0
Maputo Cidade	87.6	10.2	1.6	0.5	100.0	53.5	34.1	11.7	0.7	100.0
<b>Tamanho de agregado</b>										
1-2	83.9	12.9	2.8	0.4	100.0	59.0	31.3	8.8	0.8	100.0
3-4	87.2	11.2	1.3	0.3	100.0	53.6	38.5	6.9	1.0	100.0
5-6	88.2	9.1	2.4	0.3	100.0	51.7	34.5	13.5	0.3	100.0
7+	85.4	10.7	2.9	1.0	100.0	54.1	32.7	12.2	1.0	100.0
<b>Inserção laboral</b>										
Sector público	85.7	12.4	1.9	0.0	100.0	47.2	37.3	14.3	1.2	100.0
Sector privado formal	89.0	9.8	1.2	0.0	100.0	54.3	37.2	7.9	0.6	100.0
Sector privado informal	93.8	6.3	0.0	0.0	100.0	37.5	56.3	6.3	0.0	100.0
Agricultura a conta propria	56.7	10.0	33.3	0.0	100.0	20.0	40.0	40.0	0.0	100.0
Outros a conta propria	87.7	10.9	0.9	0.4	100.0	58.7	33.4	7.5	0.4	100.0
Desempregados	84.1	11.0	2.8	2.1	100.0	57.2	29.0	11.7	2.1	100.0
Outros	100.0	0.0	0.0	0.0	100.0	0.0	0.0	100.0	0.0	100.0
<b>Sexo do chefe de agregado</b>										
Homem	86.2	11.1	2.3	0.3	100.0	54.0	34.2	11.0	0.8	100.0
Mulher	86.9	9.8	2.2	1.1	100.0	56.8	36.1	6.6	0.5	100.0

Base for percentage is all households

Water: <15: G7a = 1

Water: 15-29: G7a = 2

Water: 30 to 59: G7a=3-4

Water: 60+ : G7a=5

Health: <15: G7f = 1

Health: 15-29: G7f = 2

Health: 30 to 59: G7f=3-4

Health: 60+ : G7f=5

Total cells are formatted as CJ; all others are formatted as PC5

Moçambique Indicadores Básicos de Bem-estar (QUIBB) Inquérito 2000-2001

**Tabela 2.12 - Distribuição percentual dos agregados familiares segundo tempo (em minutos) para chegar à escola primária e à escola secundária mais próxima**

	Escola primária				Total	Escola secundária				Total
	< 15	15 to 29	30 to 59	60+		< 15	15 to 29	30 to 59	60+	
<b>Total</b>	64.5	31.0	4.1	0.4	100.0	39.6	44.2	15.7	0.5	100.0
<b>Área de residencia e pobreza</b>										
Rural	65.6	30.1	3.8	0.5	100.0	42.0	41.5	16.1	0.4	100.0
Pobres rurais	60.9	33.3	5.8	0.0	100.0	34.8	47.8	17.4	0.0	100.0
Urbano	62.0	33.2	4.7	0.0	100.0	33.9	50.6	14.9	0.6	100.0
Pobres urbanos	59.3	33.3	7.4	0.0	100.0	18.5	63.0	14.8	3.7	100.0
<b>Provincia de residencia</b>										
Niassa	66.6	29.2	3.6	0.5	100.0	38.7	44.5	16.4	0.4	100.0
Cabo Delgado	62.3	33.0	4.5	0.2	100.0	40.5	43.9	15.0	0.6	100.0
Nampula	66.6	29.2	3.6	0.5	100.0	38.7	44.5	16.4	0.4	100.0
Zambézia	62.3	33.0	4.5	0.2	100.0	40.5	43.9	15.0	0.6	100.0
Tete	66.6	29.2	3.6	0.5	100.0	38.7	44.5	16.4	0.4	100.0
Manica	62.3	33.0	4.5	0.2	100.0	40.5	43.9	15.0	0.6	100.0
Sofala	66.6	29.2	3.6	0.5	100.0	38.7	44.5	16.4	0.4	100.0
Inhambane	62.3	33.0	4.5	0.2	100.0	40.5	43.9	15.0	0.6	100.0
Gaza	66.6	29.2	3.6	0.5	100.0	38.7	44.5	16.4	0.4	100.0
Maputo Provincia	62.3	33.0	4.5	0.2	100.0	40.5	43.9	15.0	0.6	100.0
Maputo Cidade	66.6	29.2	3.6	0.5	100.0	38.7	44.5	16.4	0.4	100.0
<b>Tamanho de agregado</b>										
1-2	67.1	28.1	4.4	0.4	100.0	40.2	43.8	15.7	0.4	100.0
3-4	64.1	31.3	4.6	0.0	100.0	38.8	46.7	14.5	0.0	100.0
5-6	62.5	33.4	3.4	0.7	100.0	40.9	41.9	16.6	0.7	100.0
7+	64.9	30.7	3.9	0.5	100.0	38.0	44.4	16.6	1.0	100.0
<b>Inserção laboral</b>										
Sector público	61.5	34.2	4.3	0.0	100.0	41.6	42.9	15.5	0.0	100.0
Sector privado formal	63.4	33.5	3.0	0.0	100.0	43.3	43.3	12.8	0.6	100.0
Sector privado informal	50.0	43.8	6.3	0.0	100.0	37.5	50.0	12.5	0.0	100.0
Agricultura a conta propria	20.0	43.3	36.7	0.0	100.0	20.0	20.0	60.0	0.0	100.0
Outros a conta propria	69.8	27.4	2.5	0.4	100.0	39.4	45.5	14.9	0.2	100.0
Desempregados	60.7	34.5	3.4	1.4	100.0	37.2	46.9	13.8	2.1	100.0
Outros	0.0	0.0	100.0	0.0	100.0	0.0	0.0	100.0	0.0	100.0
<b>Sexo do chefe de agregado</b>										
Homem	64.4	30.4	4.8	0.3	100.0	39.2	43.4	17.0	0.5	100.0
Mulher	65.0	33.9	0.5	0.5	100.0	41.5	48.1	9.8	0.5	100.0

Base for percentage is all households

Primary school: <15: G7d = 1

Primary school: 15-29: G7d = 2

Primary school: 30-59: G7d = 3-4

Primary school: 60+: G7d = 5

Secondary school: <15: G7e = 1

Secondary school: 15-29: G7e = 2

Secondary school: 30 to 59: G7e=3-4

Secondary school: 60+: G7e=5

Total cells are formatted as CJ; all others are formatted as PC5

Moçambique Indicadores Básicos de Bem-estar (QUIBB) Inquérito 2000-2001

**Tabela 2.13 - Distribuição percentual dos agregados familiares segundo tempo (em minutos) leva chegar ao mercado alimentar e transporte público mais próximo**

	Mercado alimentar				Total	Transporte Público				Total
	< 15	15 to 29	30 to 59	60+		< 15	15 to 29	30 to 59	60+	
<b>Total</b>	41.3	45.5	12.7	0.5	100.0	81.4	16.3	2.0	0.3	100.0
<b>Área de residencia e pobreza</b>										
Rural	38.9	51.5	8.9	0.7	100.0	81.6	15.6	2.4	0.4	100.0
Pobres rurais	40.6	52.2	7.2	0.0	100.0	79.7	20.3	0.0	0.0	100.0
Urbano	46.8	31.6	21.5	0.0	100.0	81.0	18.0	0.9	0.0	100.0
Pobres urbanos	33.3	44.4	22.2	0.0	100.0	74.1	22.2	3.7	0.0	100.0
<b>Provincia de residencia</b>										
Niassa	43.2	45.6	10.6	0.5	100.0	81.2	16.8	1.6	0.4	100.0
Cabo Delgado	39.1	45.5	15.0	0.4	100.0	81.6	15.8	2.4	0.2	100.0
Nampula	43.2	45.6	10.6	0.5	100.0	81.2	16.8	1.6	0.4	100.0
Zambézia	39.1	45.5	15.0	0.4	100.0	81.6	15.8	2.4	0.2	100.0
Tete	43.2	45.6	10.6	0.5	100.0	81.2	16.8	1.6	0.4	100.0
Manica	39.1	45.5	15.0	0.4	100.0	81.6	15.8	2.4	0.2	100.0
Sofala	43.2	45.6	10.6	0.5	100.0	81.2	16.8	1.6	0.4	100.0
Inhambane	39.1	45.5	15.0	0.4	100.0	81.6	15.8	2.4	0.2	100.0
Gaza	43.2	45.6	10.6	0.5	100.0	81.2	16.8	1.6	0.4	100.0
Maputo Provincia	39.1	45.5	15.0	0.4	100.0	81.6	15.8	2.4	0.2	100.0
Maputo Cidade	43.2	45.6	10.6	0.5	100.0	81.2	16.8	1.6	0.4	100.0
<b>Inserção laboral</b>										
Sector público	25.0	68.8	6.3	0.0	100.0	75.0	25.0	0.0	0.0	100.0
Sector privado formal	13.3	33.3	53.3	0.0	100.0	46.7	20.0	33.3	0.0	100.0
Sector privado informal	25.0	68.8	6.3	0.0	100.0	75.0	25.0	0.0	0.0	100.0
Agricultura a conta propria	13.3	33.3	53.3	0.0	100.0	46.7	20.0	33.3	0.0	100.0
Outros a conta propria	43.4	45.5	10.8	0.4	100.0	84.9	14.3	0.6	0.2	100.0
Desempregados	43.4	44.8	10.3	1.4	100.0	79.3	17.2	2.1	1.4	100.0
Outros	0.0	0.0	100.0	0.0	100.0	0.0	0.0	100.0	0.0	100.0
<b>Sexo do chefe de agregado</b>										
Homem	40.8	45.9	12.9	0.5	100.0	80.6	16.9	2.3	0.2	100.0
Mulher	43.7	43.7	12.0	0.5	100.0	85.2	13.7	0.5	0.5	100.0

Base for percentage is all households

Food market: <15: G7b = 1

Food market: 15-29: G7b = 2

Food market: 30-59: G7b = 3-4

Food market: 60+: G7b = 5

Public transportation: <15: G7c = 1

Public transportation: 15-29: G7c = 2

Public transportation: 30 to 59: G7c=3-4

Public transportation: 60+: G7c=5

Total cells are formatted as CJ; all others are formatted as PC5

**Tabela 2.14 - Distribuição percentual dos agregados familiares segundo o número dos membros do agregado.**

	1 até 2	3 até 4	5 até 6	7+	Total	Média	Mediána
<b>Total</b>	23.6	28.8	28.1	19.4	100.0	4.5	0.0
<b>Área de residencia e pobreza</b>							
Rural	24.9	27.6	27.0	20.5	100.0	4.5	0.0
Pobres rurais	0.0	0.0	0.0	100.0	100.0	9.7	0.0
Urbano	20.6	31.6	30.7	17.1	100.0	4.6	0.0
Pobres urbanos	0.0	0.0	0.0	100.0	100.0	10.4	0.0
<b>Provincia de residencia</b>							
Niassa	21.9	30.8	26.5	20.8	100.0	4.6	0.0
Cabo Delgado	25.5	26.7	29.8	18.0	100.0	4.5	0.0
Nampula	21.9	30.8	26.5	20.8	100.0	4.6	0.0
Zambézia	25.5	26.7	29.8	18.0	100.0	4.5	0.0
Tete	21.9	30.8	26.5	20.8	100.0	4.6	0.0
Manica	25.5	26.7	29.8	18.0	100.0	4.5	0.0
Sofala	21.9	30.8	26.5	20.8	100.0	4.6	0.0
Inhambane	25.5	26.7	29.8	18.0	100.0	4.5	0.0
Gaza	21.9	30.8	26.5	20.8	100.0	4.6	0.0
Maputo Provinci	25.5	26.7	29.8	18.0	100.0	4.5	0.0
Maputo Cidade	21.9	30.8	26.5	20.8	100.0	4.6	0.0
<b>Inserção laboral</b>							
Sector público	19.3	28.0	34.8	18.0	100.0	4.6	0.0
Sector privado fc	23.8	28.0	27.4	20.7	100.0	4.5	0.0
Sector privado in	25.0	25.0	37.5	12.5	100.0	4.3	0.0
Agricultura a cor	30.0	16.7	26.7	26.7	100.0	5.0	0.0
Outros a conta pi	24.2	30.6	26.6	18.7	100.0	4.5	0.0
Desempregados	25.5	26.9	24.8	22.8	100.0	4.7	0.0
Outros	0.0	0.0	100.0	0.0	100.0	6.0	0.0
<b>Sexo do chefe de agregado</b>							
Homem	22.2	27.0	29.4	21.5	100.0	4.7	0.0
Mulher	30.6	37.7	21.9	9.8	100.0	3.8	0.0

Base for percentage, mean is all households

1 to 2: HhSize = 1-2

3 to 4: HhSize = 3-4

5 to 6: HhSize = 5-6

7+: HhSize >= 7

Mean: sum of HhSize / number of households

Total cells are formatted as CJ; all others are formatted as PC7.

**Tabela 2.15 - Composição do agregado familiar - o número média de membros segundo grupos etários e taxa de dependência**

	0 até 4	5 até 14	0 até 14	15 até 64	65+	Total	Taxa de dependência
<b>Total</b>	0.5	1.1	1.5	2.9	0.1	4.5	0.6
<b>Área de residência e pobreza</b>							
Rural	0.5	1.0	1.5	2.9	0.1	4.5	0.6
Pobres rurais	0.9	2.4	3.3	6.2	0.2	9.7	0.6
Urbano	0.4	1.1	1.6	2.9	0.1	4.6	0.6
Pobres urbanos	0.6	3.4	4.0	6.3	0.1	10.4	0.6
<b>Provincia de residencia</b>							
Niassa	0.5	1.1	1.5	3.0	0.1	4.6	0.6
Cabo Delgado	0.5	1.0	1.5	2.9	0.1	4.5	0.6
Nampula	0.5	1.1	1.5	3.0	0.1	4.6	0.6
Zambézia	0.5	1.0	1.5	2.9	0.1	4.5	0.6
Tete	0.5	1.1	1.5	3.0	0.1	4.6	0.6
Manica	0.5	1.0	1.5	2.9	0.1	4.5	0.6
Sofala	0.5	1.1	1.5	3.0	0.1	4.6	0.6
Inhambane	0.5	1.0	1.5	2.9	0.1	4.5	0.6
Gaza	0.5	1.1	1.5	3.0	0.1	4.6	0.6
Maputo Provincia	0.5	1.0	1.5	2.9	0.1	4.5	0.6
Maputo Cidade	0.5	1.1	1.5	3.0	0.1	4.6	0.6
<b>Tamanho de agregado</b>							
1-2	0.0	0.0	0.1	1.2	0.1	1.4	0.1
3-4	0.5	0.6	1.0	2.4	0.1	3.5	0.5
5-6	0.7	1.4	2.1	3.3	0.1	5.5	0.7
7+	0.7	2.4	3.1	5.2	0.2	8.5	0.6
<b>Inserção laboral</b>							
Sector público	0.4	1.3	1.8	2.9	0.0	4.6	0.6
Sector privado formal	0.5	0.9	1.5	3.0	0.1	4.5	0.5
Sector privado informal	0.6	0.5	1.1	3.1	0.1	4.3	0.4
Agricultura a conta propria	0.6	1.8	2.4	2.5	0.1	5.0	1.0
Outros a conta propria	0.5	1.0	1.5	2.9	0.1	4.5	0.6
Desempregados	0.2	0.9	1.1	3.1	0.4	4.7	0.5
Outros	0.0	2.0	2.0	4.0	0.0	6.0	0.5
<b>Sexo do chefe de agregado</b>							
Homem	0.5	1.1	1.6	3.0	0.1	4.7	0.6
Mulher	0.3	0.9	1.1	2.4	0.2	3.8	0.6

Base for mean is all households

0 to 4: population age 0-4 (B5=0-4)

5 to 14: population age 5-14 (B5=5-14)

0 to 14: population age 0-14 (B5=0-14)

15 to 64: population age 15-64 (B5=15-64)

65+: population age 65 and above (B5>=65)

Dependency ratio: population age 0-14 + population age >= 65 / population age 15-64

All cells are formatted PC8

**Tabela 2.16 - Distribuição percentual dos agregados familiares segundo o contribuinte principal às receitas do agregado**

	Contribuinte principal				Total
	Chefe	Esposa	Filho	Outros	
<b>Total</b>	91.6	4.6	1.4	2.4	100.0
<b>Área de residência e pobreza</b>					
Rural	92.1	4.6	1.1	2.2	100.0
Pobres rurais	84.1	11.6	4.3	0.0	100.0
Urbano	90.2	4.7	2.2	2.8	100.0
Pobres urbanos	85.2	11.1	3.7	0.0	100.0
<b>Provincia de residencia</b>					
Niassa	90.9	5.1	1.1	2.9	100.0
Cabo Delgado	92.3	4.2	1.8	1.8	100.0
Nampula	90.9	5.1	1.1	2.9	100.0
Zambézia	92.3	4.2	1.8	1.8	100.0
Tete	90.9	5.1	1.1	2.9	100.0
Manica	92.3	4.2	1.8	1.8	100.0
Sofala	90.9	5.1	1.1	2.9	100.0
Inhambane	92.3	4.2	1.8	1.8	100.0
Gaza	90.9	5.1	1.1	2.9	100.0
Maputo Provincia	92.3	4.2	1.8	1.8	100.0
Maputo Cidade	90.9	5.1	1.1	2.9	100.0
<b>Tamanho de agregado</b>					
1-2	96.8	0.4	0.4	2.4	100.0
3-4	88.2	4.3	3.0	4.6	100.0
5-6	93.2	4.7	0.3	1.7	100.0
7+	87.8	10.2	2.0	0.0	100.0
<b>Inserção laboral</b>					
Sector público	96.3	3.1	0.0	0.6	100.0
Sector privado formal	97.0	3.0	0.0	0.0	100.0
Sector privado informal	87.5	0.0	0.0	12.5	100.0
Agricultura a conta propria	100.0	0.0	0.0	0.0	100.0
Outros a conta propria	95.1	3.4	0.6	0.9	100.0
Desempregados	65.5	14.5	8.3	11.7	100.0
Outros	100.0	0.0	0.0	0.0	100.0
<b>Sexo do chefe de agregado</b>					
Homem	92.1	5.6	0.7	1.6	100.0
Mulher	89.1	0.0	4.9	6.0	100.0

Base for percentage is all households

Head: B4 (F17) = 1

Spouse: B4 (F17) = 2

Child: B4 (F17) = 3

Other: none of the above

Total cells are formatted CJ; all others are formatted PC8



**Tabela 3.1 - Indicadores Educacionais**

	Taxa de alfabetismo	Primário			Secundário		
		acesso	escolarização	satisfação	acesso	escolarização	satisfação
<b>Total</b>	87.2	95.0	76.3	42.1	84.0	58.3	24.5
<b>Área de residência e pobreza</b>							
Rural	87.0	95.2	75.3	43.7	83.6	55.0	23.9
Pobres rurais	88.5	89.5	77.2	34.2	80.4	49.7	26.6
Urbano	87.8	94.6	78.2	38.9	84.9	65.5	25.8
Pobres urbanos	87.4	93.8	75.0	31.3	85.9	57.8	15.6
<b>Provincia de residencia</b>							
Niassa	87.5	93.7	75.0	44.9	80.8	56.1	24.9
Cabo Delgado	87.0	96.4	77.7	39.0	87.9	61.0	23.9
Nampula	87.5	93.7	75.0	44.9	80.8	56.1	24.9
Zambézia	87.0	96.4	77.7	39.0	87.9	61.0	23.9
Tete	87.5	93.7	75.0	44.9	80.8	56.1	24.9
Manica	87.0	96.4	77.7	39.0	87.9	61.0	23.9
Sofala	87.5	93.7	75.0	44.9	80.8	56.1	24.9
Inhambane	87.0	96.4	77.7	39.0	87.9	61.0	23.9
Gaza	87.5	93.7	75.0	44.9	80.8	56.1	24.9
Maputo Provincia	87.0	96.4	77.7	39.0	87.9	61.0	23.9
Maputo Cidade	87.5	93.7	75.0	44.9	80.8	56.1	24.9
<b>Inserção laboral</b>							
Sector público	92.4	90.8	77.8	42.5	79.5	66.9	26.0
Sector privado formal	92.2	100.0	79.2	52.8	85.8	52.5	25.0
Sector privado informal	88.2	100.0	85.7	28.6	100.0	50.0	0.0
Agricultura a conta propria	63.6	84.2	71.1	31.6	85.7	28.6	21.4
Outros a conta propria	85.3	96.5	76.3	42.4	84.8	57.6	23.4
Desempregados	86.7	95.6	72.2	33.3	83.2	59.5	26.7
Outros	100.0	0.0	50.0	50.0	0.0	100.0	100.0
<b>Sexo</b>							
Homem	92.5	94.0	79.8	43.3	83.5	59.9	25.1
Mulher	81.6	96.0	72.6	41.0	84.5	56.8	23.9

1. Alfabetismo é definido na base das pessoas 15 anos e mais.

2. Estimativas sobre escolas primárias são feitas na base de crianças 7-13 anos

Acesso é definido na base de crianças em agregados familiares que levam menor de 30 minutos para chegar a uma escola primária.

Escolarização (liquida) é definida na base de crianças actualmente numa escola primária (Grau 1-2).

Satisfação é definida na base de crianças actualmente numa escola primária e que disserem que não tinham problemas com a escola.

3. Estimativas sobre escolas secundárias são definidas na base de crianças 14-19 anos.

Acesso é definido na base das crianças em agregados familiares que levam menor de 30 minutos para chegar a uma escola secundária.

Escolarização (liquida) é definida na base de crianças actualmente numa escola secundária (Ciclo 1-2).

Satisfação é definida na base de crianças actualmente numa escola secundária e que disserem que não tinham problemas com a escola.

Literacy: C1 = 1 / Population age 15+

Primary access: G7d = 1-2 / Primary school age population (age 7-13)

Primary enrollment: C5=1, C6=1-2 / Primary school age population (age 7-13)

Primary satisfaction: C5=1, C6=1-2, C8a=1/ Primary school age population (age 7-13)

Secondary access: G7e = 1-2 / Secondary school age population (age 14-19)

Secondary enrollment: C5=1, C6=3-4 / Secondary school age population (age 14-19)

Secondary satisfaction: C5=1, C6=3-4, C8a=1/ Secondary school age population (age 14-19)

Cells are formatted RJ8

Moçambique Indicadores Básicos de Bem-estar (QUIBB) Inquérito 2000-2001

**Tabela 3.2 - A percentagem dos alunos actualmente inscritos numa escola que não são satisfeitos com a escola e as causas para a dissatisfação**

	Percentagem dissatisfeitos	Causas de dissatisfação				
		Livros/ materias	Qualidade de ensino	Falta de professores	Instalações	Outros
<b>Total</b>	41.8	22.0	43.2	29.1	29.1	50.7
<b>Área de residência e pobreza</b>						
Rural	39.4	22.9	39.9	29.3	29.3	51.8
Pobres rurais	44.4	26.1	48.7	32.2	20.9	52.2
Urbano	47.0	20.5	49.2	28.7	28.7	48.8
Pobres urbanos	55.6	18.8	50.7	23.2	26.1	50.7
<b>Provincia de residencia</b>						
Niassa	39.4	24.6	44.6	26.0	26.6	53.4
Cabo Delgado	44.6	19.5	41.8	32.2	31.6	48.0
Nampula	39.4	24.6	44.6	26.0	26.6	53.4
Zambézia	44.6	19.5	41.8	32.2	31.6	48.0
Tete	39.4	24.6	44.6	26.0	26.6	53.4
Manica	44.6	19.5	41.8	32.2	31.6	48.0
Sofala	39.4	24.6	44.6	26.0	26.6	53.4
Inhambane	44.6	19.5	41.8	32.2	31.6	48.0
Gaza	39.4	24.6	44.6	26.0	26.6	53.4
Maputo Provinci	44.6	19.5	41.8	32.2	31.6	48.0
Maputo Cidade	39.4	24.6	44.6	26.0	26.6	53.4
<b>Inserção laboral</b>						
Sector público	39.9	32.0	43.0	21.1	26.6	39.8
Sector privado fc	33.5	23.8	48.8	32.1	22.6	47.6
Sector privado in	68.8	0.0	81.8	72.7	27.3	0.0
Agricultura a cor	46.7	19.0	33.3	61.9	61.9	14.3
Outros a conta p	43.5	18.1	39.1	27.8	28.3	58.9
Desempregados	45.5	25.5	48.1	27.4	34.9	52.8
Outros	0.0	0.0	0.0	0.0	0.0	0.0
<b>Sexo</b>						
Homem	42.7	22.6	46.0	27.7	27.4	52.4
Mulher	40.9	21.4	40.1	30.7	31.0	48.8
<b>Tipo de escola</b>						
Primária	41.5	23.9	46.2	24.8	29.9	48.9
Governo	60.5	25.0	48.4	25.0	28.5	49.7
Privada	7.1	5.3	10.5	21.1	52.6	36.8
Outro	0.0	0.0	0.0	0.0	0.0	0.0
Secundária	49.3	20.8	41.6	32.6	28.5	51.8
Governo	54.6	20.7	41.6	32.1	28.8	52.2
Privada	8.1	33.3	33.3	50.0	0.0	33.3
Outro	10.0	0.0	100.0	100.0	100.0	0.0
Outro	7.7	8.3	8.3	41.7	25.0	66.7
Governo	42.1	12.5	0.0	62.5	12.5	75.0
Privada	3.1	0.0	25.0	0.0	50.0	50.0
Outro	0.0	0.0	0.0	0.0	0.0	0.0

Base for table is C5=1

Percent dissatisfied: C5=1, C8a=2 / C5=1

Books/supplies: C5=1, C8b=1 / C5=1, C8a=2

Teaching: C5=1, C8c=1 / C5=1, C8a=2

Lack of teachers: C5=1, C8d=1 / C5=1, C8a=2

Facilities: C5=1, C8e=1 / C5=1, C8a=2

Other: C5=1, C8f=1 / C5=1, C8a=2

Cells are formatted RJ7

Primary: C6=1-7

Government: C7=1

Private: C7=3

Secondary: C6=8-13	Other: C7=2, 4-5 Government: C7=1 Private: C7=3
Other: C6=14-17	Other: C7=2, 4-5 Government: C7=1 Private: C7=3 Other: C7=2, 4-5

Moçambique Indicadores Básicos de Bem-estar (QUIBB) Inquérito 2000-2001

**Tabela 3.3 - Percentagem de crianças na idade 7-19 anos que alguma vez foram inscritas numa escola segundo causa para não actualmente são inscritas**

	Percentagem não inscritas	Causas para actualmente não ser inscritas								
		Idade	Distança	Caro	Trabalho	De nada serve	Doença/ gravidez	Reprovou	Casou-se	Outro
<b>Total</b>	16.8	29.1	0.4	18.1	10.6	10.6	0.8	11.4	0.8	37.0
<b>Área de residência e pobreza</b>										
Rural	17.8	27.9	0.0	19.1	10.4	6.0	1.1	12.0	1.1	37.7
Pobres rurais	20.6	23.1	0.0	26.9	9.6	5.8	1.9	15.4	0.0	36.5
Urbano	14.5	32.4	1.4	15.5	11.3	22.5	0.0	9.9	0.0	35.2
Pobres urbanos	22.1	25.9	0.0	18.5	11.1	25.9	0.0	11.1	0.0	22.2
<b>Provincia de residencia</b>										
Niassa	18.4	29.8	0.0	23.2	7.9	7.9	0.7	11.9	0.7	39.7
Cabo Delgado	14.8	28.2	1.0	10.7	14.6	14.6	1.0	10.7	1.0	33.0
Nampula	18.4	29.8	0.0	23.2	7.9	7.9	0.7	11.9	0.7	39.7
Zambézia	14.8	28.2	1.0	10.7	14.6	14.6	1.0	10.7	1.0	33.0
Tete	18.4	29.8	0.0	23.2	7.9	7.9	0.7	11.9	0.7	39.7
Manica	14.8	28.2	1.0	10.7	14.6	14.6	1.0	10.7	1.0	33.0
Sofala	18.4	29.8	0.0	23.2	7.9	7.9	0.7	11.9	0.7	39.7
Inhambane	14.8	28.2	1.0	10.7	14.6	14.6	1.0	10.7	1.0	33.0
Gaza	18.4	29.8	0.0	23.2	7.9	7.9	0.7	11.9	0.7	39.7
Maputo Provincia	14.8	28.2	1.0	10.7	14.6	14.6	1.0	10.7	1.0	33.0
Maputo Cidade	18.4	29.8	0.0	23.2	7.9	7.9	0.7	11.9	0.7	39.7
<b>Inserção laboral</b>										
Sector público	12.0	33.3	0.0	18.2	6.1	6.1	0.0	6.1	0.0	42.4
Sector privado formal	20.1	17.8	0.0	11.1	8.9	11.1	0.0	15.6	2.2	57.8
Sector privado informal	7.7	0.0	0.0	0.0	0.0	0.0	0.0	100.0	0.0	0.0
Agricultura a conta propria	17.8	25.0	0.0	0.0	0.0	62.5	0.0	0.0	0.0	25.0
Outros a conta propria	16.7	30.9	0.0	22.8	13.8	9.8	1.6	13.0	0.8	28.5
Desempregados	20.6	34.9	2.3	14.0	9.3	7.0	0.0	7.0	0.0	39.5
Outros	0.0	0.0	0.0	0.0	0.0	0.0	0.0	0.0	0.0	0.0
<b>Sexo</b>										
Homem	15.0	33.9	0.0	26.1	8.7	7.8	0.0	7.0	0.0	38.3
Mulher	18.6	25.2	0.7	11.5	12.2	12.9	1.4	15.1	1.4	36.0
<b>Idade</b>										
7-13	3.4	12.0	0.0	8.0	4.0	16.0	0.0	32.0	0.0	40.0
14-19	29.6	31.0	0.4	19.2	11.4	10.0	0.9	9.2	0.9	36.7

Base for table is school age population (age 7-19), C2=1

Percent not attending: C2=1, C5=2 / C2=1

Too old or young: C9a=1 / C2=1, C5=2

Distance: C9b=1 / C2=1, C5=2

Expense: C9c=1 / C2=1, C5=2

Work: C9d=1 / C2=1, C5=2

Useless: C9e=1 / C2=1, C5=2

Illness/pregnancy: C9f=1 / C2=1, C5=2

Failed exam: C9g=1 / C2=1, C5=2

Got married: C9h=1 / C2=1, C5=2

Other: C9i=1 / C2=1, C5=2

Cells are formatted PC7

**Tabela 3.4 - Taxas de escolarização e taxas de resistência na escola primária segundo idade e sexo**

	Taxas de escolarização			Taxas de resistência		
	Homem	Mulher	Total	Homem	Mulher	Total
<b>Total</b>	79.8	72.6	76.3	1.3	2.4	1.8
7	82.0	78.7	80.3	0.0	3.3	1.6
8	92.1	94.3	92.9	0.0	0.0	0.0
9	97.7	81.0	89.4	0.0	2.4	1.2
10	85.9	91.7	88.7	1.6	3.3	2.4
11	84.8	75.0	80.2	4.3	10.0	7.0
12	71.2	68.4	69.6	3.4	0.0	1.5
13	51.6	33.9	42.9	0.0	0.0	0.0

Base for table is primary school age population (age 7-13)

Enrollment rates

Male: C5=1, C6=1-2/ B1=1 for the specified age

Female: C5=1, C6=1-2/ B1=2 for the specified age

Total: C5=1, C6=1-2/ for the specified age

Drop out rates

Male: C5=2, C4=1/ B1=1 for the specified age

Female: C5=2, C4=1/ B1=2 for the specified age

Total: C5=2, C4=1/ for the specified age

Cells are formatted RJ8

**Tabela 3.5 - Taxas de escolarização e taxas de resistência na escolas secundárias segundo idade e sexo**

	Taxas de escolarização			Taxas de resistência		
	Homem	Mulher	Total	Homem	Mulher	Total
<b>Total</b>	59.9	56.8	58.3	11.4	10.9	11.1
14	63.2	67.2	65.2	1.5	1.6	1.5
15	80.0	66.7	72.7	1.4	4.8	3.2
16	61.6	68.5	65.1	11.0	5.5	8.2
17	60.7	52.7	56.9	19.7	16.4	18.1
18	50.8	47.7	49.0	21.5	18.2	19.6
19	36.0	30.0	33.0	16.0	22.0	19.0

Base for table is the secondary school age population (age 14-19)

Enrollment rates

Male: C5=1, C6=3-4/ B1=1 for the specified age

Female: C5=1, C6=3-4/ B1=2 for the specified age

Total: C5=1, C6=3-4/ for the specified age

Drop out rates

Male: C5=2, C4=1/ B1=1 for the specified age

Female: C5=2, C4=1/ B1=2 for the specified age

Total: C5=2, C4=1/ for the specified age

Cells are formatted RJ8



**Tabela 3.6 - Taxas de alfabetismo segundo idade e sexo (pessoas 15 anos e mais)**

	Homem	Mulher	Total
<b>Total</b>	92.5	81.6	87.2
15-19	96.2	94.3	95.2
20-29	97.5	92.2	95.0
30-39	95.7	87.5	91.7
40-49	88.4	71.6	80.2
50-59	86.1	54.5	73.1
60+	70.5	30.4	51.4

Base for table is population age 15+

Literacy rate

Male:  $C1 = 1 / B1=1$ , age specified

Female:  $C1 = 1 / B1=2$ , age specified

Total:  $C1 = 1 /$  age specified

Cells are formatted RJ8

**Tabela 4.1 - Indicadores de saúde**

	Cuidado de saúde			
	Acesso	Necessidade	Uso	Satisfação
<b>Total</b>	87.6	13.2	11.4	8.4
<b>Área de residência e pobreza</b>				
Rural	88.0	12.7	11.5	8.9
Pobres rurais	87.6	10.7	12.4	10.7
Urbano	86.9	14.2	11.1	7.2
Pobres urbanos	75.9	13.5	12.1	8.2
<b>Provincia de residencia</b>				
Niassa	84.7	13.2	12.2	9.4
Cabo Delgado	90.9	13.2	10.5	7.3
Nampula	84.7	13.2	12.2	9.4
Zambézia	90.9	13.2	10.5	7.3
Tete	84.7	13.2	12.2	9.4
Manica	90.9	13.2	10.5	7.3
Sofala	84.7	13.2	12.2	9.4
Inhambane	90.9	13.2	10.5	7.3
Gaza	84.7	13.2	12.2	9.4
Maputo Provincia	90.9	13.2	10.5	7.3
Maputo Cidade	84.7	13.2	12.2	9.4
<b>Inserção laboral</b>				
Sector público	81.9	10.4	8.2	6.4
Sector privado formal	90.3	14.7	12.8	9.9
Sector privado informal	97.1	10.1	7.2	4.3
Agricultura a conta propria	64.0	6.7	5.3	5.3
Outros a conta propria	91.7	13.5	12.1	8.9
Desempregados	82.2	15.7	13.3	8.3
Outros	0.0	0.0	0.0	0.0
<b>Sexo</b>				
Homem	88.0	12.5	10.6	7.8
Mulher	87.2	14.0	12.2	9.0
<b>Idade</b>				
0-4	89.7	14.7	15.1	9.9
5-9	86.0	9.5	7.5	5.3
10-14	86.7	7.1	6.0	3.6
15-19	85.6	9.8	8.4	6.3
20-29	88.8	11.9	10.5	8.3
30-39	87.2	15.0	12.0	9.5
40-49	87.2	14.7	11.9	8.7
50-59	95.2	23.8	19.0	19.0
60+	89.1	26.1	23.1	17.0

1. Access is defined for persons in households less than 30 minutes from a health facility.
2. Need is defined for persons sick or injured in the four week period preceding the survey.
3. Use is defined for persons who consulted a health practitioner in the four week period preceding the survey.
4. Satisfaction is defined for persons who consulted a health practitioner in the four week period preceding the survey and who cited no problems.

Access:  $G7f=1-2$  / total population

Need:  $D4=1$  / total population

Use:  $D7=1$  / total population

Satisfaction:  $D7=1$ ,  $D10a=1$  /  $D7=1$

Cells are formatted PC8

**Tabela 4.2 - Percentagem de pessoas que consultaram um agente de saúde nas 4 semanas antes do inquerito e não estiveram satisfeitas segundo causas da dissatisfação.**

	Percentagem dissatisfeitas	Reasons for dissatisfaction						Outro
		Falta de higiene	Muito tempo de espera	Má qualidade do pessoal	Muito caro	Falta de medicam.	Tratament. sem êxitos	
<b>Total</b>	26.5	97.2	69.0	99.3	42.1	68.3	95.9	95.2
<b>Área de residencia e pobreza</b>								
Rural	22.9	97.7	67.0	100.0	38.6	68.2	95.5	94.3
Pobres rurais	13.3	100.0	45.5	100.0	36.4	72.7	90.9	100.0
Urbano	35.2	96.5	71.9	98.2	47.4	68.4	96.5	96.5
Pobres urbanos	32.4	100.0	63.6	100.0	18.2	90.9	81.8	100.0
<b>Provincia de residencia</b>								
Niassa	23.0	94.4	69.0	98.6	36.6	74.6	98.6	94.4
Cabo Delgado	31.1	100.0	68.9	100.0	47.3	62.2	93.2	95.9
Nampula	23.0	94.4	69.0	98.6	36.6	74.6	98.6	94.4
Zambézia	31.1	100.0	68.9	100.0	47.3	62.2	93.2	95.9
Tete	23.0	94.4	69.0	98.6	36.6	74.6	98.6	94.4
Manica	31.1	100.0	68.9	100.0	47.3	62.2	93.2	95.9
Sofala	23.0	94.4	69.0	98.6	36.6	74.6	98.6	94.4
Inhambane	31.1	100.0	68.9	100.0	47.3	62.2	93.2	95.9
Gaza	23.0	94.4	69.0	98.6	36.6	74.6	98.6	94.4
Maputo Provincia	31.1	100.0	68.9	100.0	47.3	62.2	93.2	95.9
Maputo Cidade	23.0	94.4	69.0	98.6	36.6	74.6	98.6	94.4
<b>Inserção laboral</b>								
Sector público	21.3	100.0	46.2	100.0	61.5	38.5	92.3	100.0
Sector privado formal	23.2	86.4	72.7	100.0	54.5	81.8	90.9	100.0
Sector privado informal	40.0	100.0	50.0	100.0	100.0	0.0	100.0	100.0
Agricultura a conta propria	0.0	0.0	0.0	0.0	0.0	0.0	0.0	0.0
Outros a conta propria	25.9	100.0	68.9	100.0	36.5	70.3	98.6	94.6
Desempregados	37.8	97.1	76.5	97.1	35.3	70.6	94.1	91.2
Outros	0.0	0.0	0.0	0.0	0.0	0.0	0.0	0.0
<b>Sexo</b>								
Homem	26.3	98.6	66.7	98.6	47.8	62.3	94.2	92.8
Mulher	26.7	96.1	71.1	100.0	36.8	73.7	97.4	97.4
<b>Tipo de agente consultou</b>								
Posto de Saúde do Estado	24.4	97.3	81.3	100.0	25.3	81.3	100.0	94.7
Centro de Saúde do Estado	57.9	96.4	50.9	98.2	63.6	43.6	92.7	96.4
Hospital	13.0	100.0	66.7	100.0	0.0	100.0	100.0	100.0
Clínica Privada	14.8	100.0	50.0	100.0	50.0	100.0	75.0	100.0
Farmácia	6.5	100.0	75.0	100.0	25.0	75.0	75.0	100.0
Médico/Dent/Consult. Priv.	17.4	100.0	100.0	100.0	100.0	100.0	100.0	75.0
Médico tradicional	17.4	100.0	100.0	100.0	100.0	100.0	100.0	75.0
Outros	17.4	100.0	100.0	100.0	100.0	100.0	100.0	75.0
Column width	8.83	9	9	9	9	9	9	9

Percent dissatisfied: D7=1, D10a=2 / D7=1

Facilities not clean: D10b=1 / D7=1, D10a=2

Long wait: D10c=1 / D7=1, D10a=2

No trained professionals: D10d=1 / D7=1, D10a=2

Cost: D10e=1 / D7=1, D10a=2

No drugs available: D10f=1 / D7=1, D10a=2

Treatment unsuccessful: D10g=1 / D7=1, D10a=2

Other: D10h=1 / D7=1, D10a=2

Cells are formatted PC6

Private hospital: D8=1

Public hospital: D8=2

Mission hospital: D8=7

Regional hospital: D8=6

Health center: D8=3

Doctor/Dentist: D8=4

Trad. healer: D8=5  
Pharmacist: D8=8  
Other: D8=9

**Tabela 4.3 - Percentagem de pessoas que não consultaram um agente de saúde nas 4 semanas antes do inquérito e causas para não consultar**

	Percentagem que não consultaram	Causas para não consultar			
		Não precisaram	Caro	Distancia	Outro
<b>Total</b>	88.4	96.3	2.9	0.0	0.4
<b>Área de residencia e pobreza</b>					
Rural	88.2	96.5	2.5	0.0	0.6
Pobres rurais	87.5	97.3	2.4	0.0	0.0
Urbano	88.8	95.8	3.7	0.0	0.1
Pobres urbanos	87.9	91.1	8.9	0.0	0.0
<b>Provincia de residencia</b>					
Niassa	87.7	96.7	2.4	0.0	0.2
Cabo Delgado	89.2	95.9	3.3	0.0	0.6
Nampula	87.7	96.7	2.4	0.0	0.2
Zambézia	89.2	95.9	3.3	0.0	0.6
Tete	87.7	96.7	2.4	0.0	0.2
Manica	89.2	95.9	3.3	0.0	0.6
Sofala	87.7	96.7	2.4	0.0	0.2
Inhambane	89.2	95.9	3.3	0.0	0.6
Gaza	87.7	96.7	2.4	0.0	0.2
Maputo Provincia	89.2	95.9	3.3	0.0	0.6
Maputo Cidade	87.7	96.7	2.4	0.0	0.2
<b>Inserção laboral</b>					
Sector público	91.7	97.5	1.3	0.0	0.3
Sector privado formal	87.0	96.1	2.8	0.0	0.3
Sector privado informal	92.8	95.3	4.7	0.0	0.0
Agricultura a conta propria	94.7	91.5	3.5	0.0	4.9
Outros a conta propria	87.9	96.4	3.0	0.0	0.2
Desempregados	86.5	95.9	3.9	0.2	0.3
Outros	100.0	100.0	0.0	0.0	0.0
<b>Sexo</b>					
Homem	89.1	96.6	2.6	0.0	0.3
Mulher	87.7	96.0	3.1	0.0	0.5
<b>Tipo de doença/ferimento</b>					
Febre/Malária	22.5	38.6	51.8	0.9	9.6
Diarreia	15.0	33.3	66.7	0.0	0.0
Acidente	16.7	50.0	50.0	0.0	0.0
Dente	21.4	33.3	66.7	33.3	33.3
Problemas de pele	7.7	0.0	100.0	0.0	0.0
Vista	26.3	20.0	80.0	0.0	0.0
Ouvido/nariz/garganta	22.0	33.3	66.7	0.0	0.0
Outro	0.0	0.0	0.0	0.0	0.0

Percent not consulting: D7=2 / total population

No need: D10a=1 / D7=2

Cost: D10b=1 / D7=2

Distance: D10c=1 / D7=2

Other: D10d=1 / D7=2

Cells are formatted PC8

Fever or malaria: D5a=1 / D4=1

Diarrhea: D5b=1 / D4=1

Accident: D5c=1 / D4=1

Dental: D5d=1 / D4=1

Skin condition: D5e=1 / D4=1

Eye: D5f=1 / D4=1

Ear, nose, throat: D5g=1 / D4=1

Other: D5h=1 / D4=1

Moçambique Indicadores Básicos de Bem-estar (QUIBB) Inquérito 2000-2001

**Tabela 4.4 - A percentagem da população doente ou ferido as ultimas 4 semanas  
segundo tipo de doença/ferimento, sexo e idade**

	Febre ou malária	Diarreia	Acidente	Dente	Problema de pele	Vista	Ouvido,nariz ou garganta	Outro
<b>Total</b>	10.6	0.4	0.3	0.3	0.3	0.4	0.9	1.4
<b>Homem total</b>	10.3	0.8	0.4	0.4	0.3	3.0	0.8	1.3
0-4	11.1	1.2	0.4	1.6	0.0	0.0	2.5	1.2
5-9	6.3	0.4	0.0	0.0	1.1	0.0	0.4	0.7
10-14	5.6	0.3	0.0	0.0	0.0	0.0	0.3	0.7
15-29	9.2	0.2	0.4	0.5	0.0	0.4	0.5	0.8
30-49	12.0	0.2	0.4	0.2	0.2	0.4	0.5	0.5
50-64	21.0	5.0	2.8	0.0	0.6	37.0	2.2	3.9
65+	13.3	2.7	0.0	0.0	2.7	4.0	1.3	10.7
<b>Mulher total</b>	11.5	0.4	0.2	0.2	0.3	0.4	0.9	1.4
0-4	11.2	0.0	0.4	0.4	1.3	0.4	0.9	1.7
5-9	7.7	0.9	0.0	0.4	0.0	0.9	1.7	0.0
10-14	5.0	0.0	0.0	0.3	0.3	0.3	1.3	1.0
15-29	9.9	0.6	0.1	0.0	0.0	0.1	0.5	0.4
30-49	14.0	0.2	0.2	0.2	0.0	0.4	0.6	1.4
50-64	25.4	0.0	0.7	0.0	1.5	1.5	1.5	5.2
65+	27.5	2.9	1.4	1.4	0.0	0.0	2.9	13.0

Fever or malaria: D5a=1 / D4=1

Diarrhea: D5b=1 / D4=1

Accident: D5c=1 / D4=1

Dental: D5d=1 / D4=1

Skin condition: D5e=1 / D4=1

Eye: D5f=1 / D4=1

Ear, nose, throat: D5g=1 / D4=1

Other: D5h=1 / D4=1

Cells are formatted PC7

**Tabela 4.5 - Distribuição percentual das consultas de saúde durante as 4 semanas antes do inquérito segundo tipo de agente de saúde consultado**

	Posto de Saúde do Estado	Centro de Saúde do Estado	Hospital	Clínica Privada	Farmácia	Médico/dentista privado	Médico tradicional	Outros
<b>Total</b>	56.1	17.4	1.3	0.2	0.4	4.2	11.3	4.2
<b>Área de residência e pobreza</b>								
Rural	58.2	14.0	0.3	0.3	0.3	4.4	12.2	4.9
Pobres rurais	51.8	8.4	0.0	0.0	0.0	1.2	12.0	16.9
Urbano	51.2	25.3	3.7	0.0	0.6	3.7	9.3	2.5
Pobres urbanos	58.8	14.7	11.8	0.0	0.0	0.0	5.9	0.0
<b>Provincia de residencia</b>								
Niassa	52.1	13.3	2.3	0.0	0.3	4.5	15.2	6.1
Cabo Delgado	61.3	22.7	0.0	0.4	0.4	3.8	6.3	1.7
Nampula	52.1	13.3	2.3	0.0	0.3	4.5	15.2	6.1
Zambézia	61.3	22.7	0.0	0.4	0.4	3.8	6.3	1.7
Tete	52.1	13.3	2.3	0.0	0.3	4.5	15.2	6.1
Manica	61.3	22.7	0.0	0.4	0.4	3.8	6.3	1.7
Sofala	52.1	13.3	2.3	0.0	0.3	4.5	15.2	6.1
Inhambane	61.3	22.7	0.0	0.4	0.4	3.8	6.3	1.7
Gaza	52.1	13.3	2.3	0.0	0.3	4.5	15.2	6.1
Maputo Provincia	61.3	22.7	0.0	0.4	0.4	3.8	6.3	1.7
Maputo Cidade	52.1	13.3	2.3	0.0	0.3	4.5	15.2	6.1
<b>Inserção laboral</b>								
Sector público	54.1	29.5	0.0	0.0	0.0	1.6	14.8	0.0
Sector privado formal	66.3	11.6	2.1	0.0	0.0	2.1	14.7	2.1
Sector privado informal	40.0	20.0	0.0	0.0	0.0	0.0	20.0	0.0
Agricultura a conta propria	50.0	25.0	0.0	0.0	0.0	0.0	0.0	0.0
Outros a conta propria	53.8	16.1	0.3	0.3	0.7	4.2	12.2	7.0
Desempregados	55.6	18.9	4.4	0.0	0.0	7.8	3.3	1.1
Outros	0.0	0.0	0.0	0.0	0.0	0.0	0.0	0.0

Private hospital: D8=1 / D7=1

Public hospital: D8=2 / D7=1

Mission hospital: D8=3 / D7=1

Regional hospital: D8=4 / D7=1

Community health center: D8=5 / D7=1

Private doctor, dentist: D8=6 / D7=1

Traditional healer: D8=7 / D7=1

Pharmacist, chemist: D8=8 / D7=1

Other: D8=9 / D7=1

Cells are formatted PC6

Moçambique Indicadores Básicos de Bem-estar (QUIBB) Inquérito 2000-2001

**Tabela 4.6 - Percentagem das mulheres 12-49 anos que tinham um parto vivo no ano antes do inquerito segundo a idade da mãe e a percentagem destes partos onde a mãe recebeu cuidado ante-natal**

	12 até 14	15 até 19	20 até 24	25 até 29	30 até 39	40 até 49	Total	Cuidado ante-natal
<b>Total</b>	0.0	0.6	8.2	19.8	11.5	2.3	6.6	93.6
<b>Área de residencia e pobreza</b>								
Rural	0.0	0.4	9.4	21.7	9.4	3.3	7.0	92.5
Pobres rurais	0.0	0.0	6.5	22.2	9.7	6.9	5.9	100.0
Urbano	0.0	0.9	5.5	14.7	16.0	0.0	5.8	96.7
Pobres urbanos	0.0	0.0	4.3	11.1	20.0	0.0	3.3	75.0
<b>Provincia de residencia</b>								
Niassa	0.0	0.5	9.2	21.6	9.4	4.2	6.6	96.6
Cabo Delgado	0.0	0.6	7.3	18.2	14.4	0.0	6.7	90.4
Nampula	0.0	0.5	9.2	21.6	9.4	4.2	6.6	96.6
Zambézia	0.0	0.6	7.3	18.2	14.4	0.0	6.7	90.4
Tete	0.0	0.5	9.2	21.6	9.4	4.2	6.6	96.6
Manica	0.0	0.6	7.3	18.2	14.4	0.0	6.7	90.4
Sofala	0.0	0.5	9.2	21.6	9.4	4.2	6.6	96.6
Inhambane	0.0	0.6	7.3	18.2	14.4	0.0	6.7	90.4
Gaza	0.0	0.5	9.2	21.6	9.4	4.2	6.6	96.6
Maputo Provincia	0.0	0.6	7.3	18.2	14.4	0.0	6.7	90.4
Maputo Cidade	0.0	0.5	9.2	21.6	9.4	4.2	6.6	96.6
<b>Inserção laboral</b>								
Sector público	0.0	0.0	0.0	25.8	11.3	2.4	5.5	100.0
Sector privado formal	0.0	0.0	8.6	15.6	19.1	3.0	8.1	100.0
Sector privado informal	0.0	0.0	0.0	50.0	0.0	0.0	13.6	100.0
Agricultura a conta propria	0.0	0.0	50.0	37.5	40.0	16.7	20.5	37.5
Outros a conta propria	0.0	1.2	12.4	18.6	8.6	1.0	6.5	98.1
Desempregados	0.0	0.0	2.4	10.7	8.3	3.2	3.2	85.7
Outros	0.0	0.0	0.0	0.0	0.0	0.0	0.0	0.0

Had live birth: D1=1 / B1=2, Age 12-49

Received pre-natal care: D2=1 / B1=2, Age 12-49, D1=1

Cells are formatted PC7



Moçambique Indicadores Básicos de Bem-estar (QUIBB) Inquérito 2000-2001  
**Tabela 4.7 - Distribuição percentual dos partos no 5 anos antes do inquerito  
segundo lugar do parto**

	Hospital/ maternidade	Em casa	Outro	Total
<b>Total</b>	84.1	10.5	5.4	100.0
<b>Área de residencia e pobreza</b>				
Rural	86.2	7.6	6.1	100.0
Pobres rurais	87.7	3.5	8.8	100.0
Urbano	79.0	17.4	3.6	100.0
Pobres urbanos	81.3	18.8	0.0	100.0
<b>Provincia de residencia</b>				
Niassa	86.4	7.4	6.2	100.0
Cabo Delgado	81.6	13.9	4.5	100.0
Nampula	86.4	7.4	6.2	100.0
Zambézia	81.6	13.9	4.5	100.0
Tete	86.4	7.4	6.2	100.0
Manica	81.6	13.9	4.5	100.0
Sofala	86.4	7.4	6.2	100.0
Inhambane	81.6	13.9	4.5	100.0
Gaza	86.4	7.4	6.2	100.0
Maputo Provincia	81.6	13.9	4.5	100.0
Maputo Cidade	86.4	7.4	6.2	100.0
<b>Inserção laboral</b>				
Sector público	87.9	9.1	3.0	100.0
Sector privado formal	92.0	5.7	2.3	100.0
Sector privado informal	60.0	30.0	10.0	100.0
Agricultura a conta propria	42.1	57.9	0.0	100.0
Outros a conta propria	84.7	7.6	7.6	100.0
Desempregados	81.3	15.6	3.1	100.0
Outros	0.0	0.0	0.0	0.0

Hospital/maternity: I3=1 / Total number of children under 5

At home: I3=2 / Total number of children under 5

Other: I3=3 / Total number of children under 5

Cells are formatted PC7

**Tabela 4.8 - Distribuição percentual dos partos no 5 anos antes do inquerito segundo quem assistiu ao parto**

	Médico	Infermeiro	Parteira	Parteira tradicional	Outros/ sozinha	Total
<b>Total</b>	33.0	50.2	4.1	10.3	2.4	100.0
<b>Área de residência e pobreza</b>						
Rural	36.5	48.8	3.1	9.8	1.8	100.0
Pobres rurais	33.9	53.6	5.4	7.1	0.0	100.0
Urbano	24.6	53.6	6.5	11.6	3.6	100.0
Pobres urbanos	12.5	62.5	6.3	18.8	0.0	100.0
<b>Provincia de residencia</b>						
Niassa	39.7	45.0	5.4	8.3	1.7	100.0
Cabo Delgado	25.7	55.9	2.7	12.6	3.2	100.0
Nampula	39.7	45.0	5.4	8.3	1.7	100.0
Zambézia	25.7	55.9	2.7	12.6	3.2	100.0
Tete	39.7	45.0	5.4	8.3	1.7	100.0
Manica	25.7	55.9	2.7	12.6	3.2	100.0
Sofala	39.7	45.0	5.4	8.3	1.7	100.0
Inhambane	25.7	55.9	2.7	12.6	3.2	100.0
Gaza	39.7	45.0	5.4	8.3	1.7	100.0
Maputo Provincia	25.7	55.9	2.7	12.6	3.2	100.0
Maputo Cidade	39.7	45.0	5.4	8.3	1.7	100.0
<b>Inserção laboral</b>						
Sector público	40.9	48.5	3.0	7.6	0.0	100.0
Sector privado formal	48.3	42.5	4.6	3.4	1.1	100.0
Sector privado informal	40.0	20.0	10.0	30.0	0.0	100.0
Agricultura a conta propria	0.0	36.8	0.0	63.2	0.0	100.0
Outros a conta propria	28.6	54.8	4.4	9.3	2.8	100.0
Desempregados	28.1	53.1	3.1	6.3	9.4	100.0
Outros	0.0	0.0	0.0	0.0	0.0	0.0

Doctor: I4=1 / total number of children under 5

Nurse: I4=2 / total number of children under 5

Midwife: I4=3 / total number of children under 5

T.B.A.: I4=4 / total number of children under 5

Other/self: I4=5 / total number of children under 5

Total cells are formatted PC7; all others are formatted PC8

**Tabela 5.0 - Percentagem das crianças medidas segundo sexo e idade**

	Homem	Mulher	Falta	Total
<b>Altura</b>	94.2	93.6	0.0	93.9
<b>Idade em meses</b>				
0	94.9	100.0	0.0	97.5
1	100.0	93.6	0.0	97.0
2	98.0	95.5	0.0	96.8
3	92.9	90.7	0.0	91.8
4	94.3	94.1	0.0	94.2
5	0.0	0.0	0.0	0.0
Falta	16.7	20.0	0.0	18.2
n	229.0	218.0	0.0	447.0
<b>Peso</b>	95.9	96.1	0.0	96.0
<b>Idade em meses</b>				
0	96.6	98.3	0.0	97.5
1	100.0	100.0	0.0	100.0
2	98.0	100.0	0.0	98.9
3	95.2	93.0	0.0	94.1
4	100.0	97.1	0.0	98.6
5	0.0	0.0	0.0	0.0
Falta	16.7	20.0	0.0	18.2
n	233.0	224.0	0.0	457.0

Male: Sex=1

Female: Sex=2

Missing: Sex<>1, Sex<>2

Cells are formatted PC7

**Tabela 5.1 - Indicadores de nutrição**

NOT TRANSLA	% stunted	% wasted	% underweight	Participação de programas	
				nutrição	controle de peso
<b>Total</b>	17.4	9.0	10.4	81.9	84.1
<b>Place of residence</b>					
Rural	18.2	8.9	10.5	81.0	84.1
Rural poor	25.5	7.3	18.2	89.5	91.2
Urban	15.4	9.2	10.0	84.1	84.1
Urban poor	12.5	0.0	6.3	75.0	75.0
<b>Provincia de residencia</b>					
Niassa	17.8	10.0	11.3	80.5	83.8
Cabo Delgado	16.9	8.0	9.4	83.5	84.4
Nampula	17.8	10.0	11.3	80.5	83.8
Zambézia	16.9	8.0	9.4	83.5	84.4
Tete	17.8	10.0	11.3	80.5	83.8
Manica	16.9	8.0	9.4	83.5	84.4
Sofala	17.8	10.0	11.3	80.5	83.8
Inhambane	16.9	8.0	9.4	83.5	84.4
Gaza	17.8	10.0	11.3	80.5	83.8
Maputo Provincie	16.9	8.0	9.4	83.5	84.4
Maputo Cidade	17.8	10.0	11.3	80.5	83.8
<b>Inserção laboral</b>					
Sector público	13.1	6.6	9.8	91.0	92.5
Sector privado fo	16.9	4.8	4.8	83.9	87.4
Sector privado in	20.0	20.0	20.0	70.0	70.0
Agricultura a con	21.1	0.0	5.3	31.6	31.6
Outros a conta pr	19.2	11.7	13.3	82.6	83.8
Desempregados	10.7	3.6	3.6	87.5	96.9
Outros	0.0	0.0	0.0	0.0	0.0
<b>Sexo e idade em anos completados</b>					
<b>Homem</b>	18.4	9.6	11.4	83.5	86.1
0	7.1	12.5	3.6	81.4	81.4
1	30.8	11.5	19.2	80.8	82.7
2	18.8	8.3	12.5	89.8	93.9
3	17.9	7.7	15.4	81.0	83.3
4	18.2	6.1	6.1	85.7	91.4
<b>Mulher</b>	16.3	8.4	9.3	80.3	82.0
0	6.8	13.6	3.4	71.7	76.7
1	9.1	4.5	11.4	76.6	74.5
2	21.4	9.5	11.9	90.9	95.5
3	26.3	0.0	10.5	79.1	81.4
4	25.0	12.5	12.5	88.2	85.3

% stunted: Stunted=1 / total number of children under 5

% wasted: Wasted=1 / total number of children under 5

% Underweight: Underw=1 / total number of children under 5

Nutrition program: l6a=1 / total number of children under 5

Weigh-in program: l6b=1 / total number of children under 5

Cells are formatted PC8

**Tabela 6.1 - Distribuição percentual da população segundo situação de trabalho (15 anos e mais)**

	Ocupado			Não ocupado			Total
	Ocupado	Subempregad	Total	Desempregad	Inactiva	Total	
<b>Total</b>	45.8	12.1	58.0	8.5	33.5	42.0	100.0
<b>Área de residencia e pobreza</b>							
Rural	44.1	12.9	56.9	8.7	34.3	43.1	100.0
Pobres rurais	32.5	10.8	43.3	9.0	47.6	56.7	100.0
Urbano	49.9	10.4	60.3	8.0	31.6	39.7	100.0
Pobres urbanos	37.7	8.6	46.3	11.4	42.3	53.7	100.0
<b>Provincia de residencia</b>							
Niassa	45.2	12.0	57.2	8.3	34.6	42.8	100.0
Cabo Delgado	46.5	12.4	58.9	8.8	32.4	41.1	100.0
Nampula	45.2	12.0	57.2	8.3	34.6	42.8	100.0
Zambézia	46.5	12.4	58.9	8.8	32.4	41.1	100.0
Tete	45.2	12.0	57.2	8.3	34.6	42.8	100.0
Manica	46.5	12.4	58.9	8.8	32.4	41.1	100.0
Sofala	45.2	12.0	57.2	8.3	34.6	42.8	100.0
Inhambane	46.5	12.4	58.9	8.8	32.4	41.1	100.0
Gaza	45.2	12.0	57.2	8.3	34.6	42.8	100.0
Maputo Provincia	46.5	12.4	58.9	8.8	32.4	41.1	100.0
Maputo Cidade	45.2	12.0	57.2	8.3	34.6	42.8	100.0
<b>Sexo e idade</b>							
Homem	46.7	14.2	60.9	8.9	30.2	39.1	100.0
15-29	28.6	7.4	36.0	11.0	52.9	64.0	100.0
30-49	69.6	21.9	91.5	6.4	2.1	8.5	100.0
50-64	56.1	24.3	80.4	10.1	9.5	19.6	100.0
65+	49.3	3.0	52.2	1.5	46.3	47.8	100.0
<b>Mulher</b>	44.9	10.0	54.9	8.1	37.0	45.1	100.0
15-29	29.7	4.0	33.8	11.3	54.9	66.2	100.0
30-49	64.0	20.0	84.0	4.9	11.1	16.0	100.0
50-64	67.9	12.4	80.3	3.6	16.1	19.7	100.0
65+	40.9	3.0	43.9	1.5	54.5	56.1	100.0

1. Underemployed includes persons who worked part time in the seven day period preceding the survey.
2. Unemployed includes persons who did not work in the four week period preceding the survey and who looked for work in the same period. The inactive population, primarily students and retired persons, is not included.

Employed: E1=1 or E2=1, E9<>1 / total population age 15+

Under employed: E1=1 or E2=1, E9=1 / total population age 15+

Unemployed: E1<>1, E2<>1, E3=1 / total population age 15+

Inactive: E1<>1, E2<>1, E3<>1 / total population age 15+

Total cells are formatted CJ, all others are formatted PC7

**Tabela 6.2 - Distribuição percentual da população ocupada segundo situação do emprego**

	Emprego regular	Emprego não regular	Trabalhador sem pagamento	A conta própria	Total
<b>Total</b>	28.7	2.4	6.2	62.7	100.0
<b>Área de residencia e pobreza</b>					
Rural	30.7	2.0	6.2	61.1	100.0
Pobres rurais	18.2	3.1	13.5	65.1	100.0
Urbano	24.2	3.1	6.4	66.3	100.0
Pobres urbanos	13.6	3.7	8.6	74.1	100.0
<b>Provincia de residencia</b>					
Niassa	31.2	1.3	7.2	60.2	100.0
Cabo Delgado	26.0	3.5	5.2	65.3	100.0
Nampula	31.2	1.3	7.2	60.2	100.0
Zambézia	26.0	3.5	5.2	65.3	100.0
Tete	31.2	1.3	7.2	60.2	100.0
Manica	26.0	3.5	5.2	65.3	100.0
Sofala	31.2	1.3	7.2	60.2	100.0
Inhambane	26.0	3.5	5.2	65.3	100.0
Gaza	31.2	1.3	7.2	60.2	100.0
Maputo Provincie	26.0	3.5	5.2	65.3	100.0
Maputo Cidade	31.2	1.3	7.2	60.2	100.0
<b>Sexo e idade</b>					
Homem	35.7	3.1	7.4	53.8	100.0
15-29	27.6	6.4	23.9	42.1	100.0
30-49	40.7	1.7	0.6	56.9	100.0
50-64	35.5	0.7	0.0	63.8	100.0
65+	31.4	5.7	0.0	62.9	100.0
<b>Mulher</b>	20.5	1.5	4.9	73.1	100.0
15-29	20.1	3.2	13.7	63.0	100.0
30-49	25.2	0.9	0.5	73.4	100.0
50-64	7.3	0.0	0.9	91.8	100.0
65+	3.4	0.0	0.0	96.6	100.0

Base is working population: E1=1 or E2=1, age 15+

Regular employee: E6=1

Casual employee: E6=2

Unpaid worker: E6=3

Self-employed: E6=4

Total cells are formatted CJ; all others are formatted PC8

**Tabula 6.3 - Distribuição percentual da população ocupada segundo para quem trabalha**

	Governo	Parastatal	Sector privado	Pessoa Agregado	Total
<b>Total</b>	11.1	2.2	16.1	70.6	100.0
<b>Área de residencia e pobreza</b>					
Rural	11.5	2.3	17.0	69.2	100.0
Pobres rurais	8.3	1.6	13.0	77.1	100.0
Urbano	10.2	2.1	14.0	73.7	100.0
Pobres urbanos	6.2	1.2	11.1	81.5	100.0
<b>Provincia de residencia</b>					
Niassa	12.1	2.2	16.8	68.9	100.0
Cabo Delgado	10.0	2.2	15.4	72.4	100.0
Nampula	12.1	2.2	16.8	68.9	100.0
Zambézia	10.0	2.2	15.4	72.4	100.0
Tete	12.1	2.2	16.8	68.9	100.0
Manica	10.0	2.2	15.4	72.4	100.0
Sofala	12.1	2.2	16.8	68.9	100.0
Inhambane	10.0	2.2	15.4	72.4	100.0
Gaza	12.1	2.2	16.8	68.9	100.0
Maputo Provincie	10.0	2.2	15.4	72.4	100.0
Maputo Cidade	12.1	2.2	16.8	68.9	100.0
<b>Sexo e idade</b>					
Homem	11.8	3.5	22.0	62.8	100.0
15-29	4.4	2.7	27.3	65.7	100.0
30-49	15.6	3.9	20.3	60.2	100.0
50-64	15.1	3.9	17.1	63.8	100.0
65+	2.9	2.9	22.9	71.4	100.0
<b>Mulher</b>	10.3	0.7	9.2	79.8	100.0
15-29	5.3	0.7	13.0	81.0	100.0
30-49	15.3	0.9	9.3	74.5	100.0
50-64	5.5	0.0	1.8	92.7	100.0
65+	3.4	0.0	0.0	96.6	100.0

Base is working population: E1=1 or E2=1, age 15+

Government: E7=1

Parastatal: E7=2

Private business: E7=3

Private person/household: E7=4

Total cells are formatted CJ; all others are formatted PC8

**Tabela 6.4 - Distribuição percentual da população ocupada segundo ramo de actividade**

	Agricultura	Industria extract.	Industria manufact.	Construic.	Transport.	Comercio	Services	Educação Saúde	Admin.	Outro	Total
<b>Total</b>	2.9	0.6	4.8	3.7	3.3	42.3	32.4	5.2	3.3	1.6	100.0
<b>Área de residencia e pobreza</b>											
Rural	3.5	0.4	4.6	3.7	3.0	40.6	33.1	6.5	3.0	1.6	100.0
Pobres rurais	2.6	0.0	6.3	1.6	1.6	48.4	34.9	4.7	0.0	0.0	100.0
Urbano	1.4	1.0	5.2	3.6	4.0	46.2	30.8	2.4	4.0	1.4	100.0
Pobres urbanos	2.5	4.9	7.4	4.9	2.5	51.9	23.5	0.0	1.2	1.2	100.0
<b>Provincia de residencia</b>											
Niassa	2.9	0.3	3.9	3.5	2.9	42.0	32.5	6.2	3.3	2.4	100.0
Cabo Delgado	2.8	0.9	5.7	3.8	3.8	42.6	32.2	4.2	3.3	0.7	100.0
Nampula	2.9	0.3	3.9	3.5	2.9	42.0	32.5	6.2	3.3	2.4	100.0
Zambézia	2.8	0.9	5.7	3.8	3.8	42.6	32.2	4.2	3.3	0.7	100.0
Tete	2.9	0.3	3.9	3.5	2.9	42.0	32.5	6.2	3.3	2.4	100.0
Manica	2.8	0.9	5.7	3.8	3.8	42.6	32.2	4.2	3.3	0.7	100.0
Sofala	2.9	0.3	3.9	3.5	2.9	42.0	32.5	6.2	3.3	2.4	100.0
Inhambane	2.8	0.9	5.7	3.8	3.8	42.6	32.2	4.2	3.3	0.7	100.0
Gaza	2.9	0.3	3.9	3.5	2.9	42.0	32.5	6.2	3.3	2.4	100.0
Maputo Provincia	2.8	0.9	5.7	3.8	3.8	42.6	32.2	4.2	3.3	0.7	100.0
Maputo Cidade	2.9	0.3	3.9	3.5	2.9	42.0	32.5	6.2	3.3	2.4	100.0
<b>Sexo e idade</b>											
Homem	4.1	0.6	6.0	6.6	6.2	24.4	42.6	3.4	4.1	2.1	100.0
15-29	3.7	0.7	6.7	3.7	5.7	31.6	43.4	1.7	1.0	1.7	100.0
30-49	3.5	0.6	6.2	7.3	6.9	20.7	43.8	3.3	6.0	1.7	100.0
50-64	7.2	0.0	3.9	9.9	5.3	22.4	40.1	4.6	3.9	2.6	100.0
65+	2.9	2.9	5.7	5.7	2.9	25.7	28.6	14.3	2.9	8.6	100.0
Mulher	1.4	0.6	3.4	0.2	0.0	63.4	20.4	7.4	2.3	0.9	100.0
15-29	1.4	0.7	5.6	0.7	0.0	54.9	29.6	3.5	1.4	2.1	100.0
30-49	1.9	0.5	1.9	0.0	0.0	62.5	18.5	11.1	3.5	0.2	100.0
50-64	0.0	0.9	4.5	0.0	0.0	81.8	6.4	4.5	0.9	0.9	100.0
65+	0.0	0.0	0.0	0.0	0.0	89.7	10.3	0.0	0.0	0.0	100.0
Column width	8	5.83	8	8.00	8.50	8.00	5.67	7.5	6.00	5.33	6.5

Base is the working population: E1=1 or E2=1, age 15+

Agriculture: E8=0

Mining: E8=1

Manufacturing: E8=2

Construction: E8=3

Transportation: E8=4

Trade: E8=5

Services: E8=6

Education/Health: E8=7

Administration: E8=8

Other: E8=9

Total cells are formatted CJ; all others are formatted PC4



**Tabela 6.5 - Distribuição percentual da população ocupada segundo situação de emprego, sexo e ramo de actividade**

	Emprego regular		Emprego não regular		Empregado não pago		A conta própria		Total	
	Homem	Mulher	Homem	Mulher	Homem	Mulher	Homem	Mulher	Homem	Mulher
<b>Total</b>	100.0	100.0	100.0	100.0	100.0	100.0	100.0	100.0	100.0	100.0
Agricultura	0.8	0.6	0.0	0.0	2.7	7.1	6.7	1.3	4.1	1.4
Ind. Extractiva	1.7	0.0	0.0	0.0	0.0	2.4	0.0	0.6	0.6	0.6
Manufactureira	9.2	3.4	6.5	30.8	4.1	9.5	4.1	2.4	6.0	3.4
Construção	4.5	0.0	9.7	0.0	1.4	2.4	8.5	0.2	6.6	0.2
Transporte	4.5	0.0	29.0	0.0	1.4	0.0	6.7	0.0	6.2	0.0
Comércio/venda	5.9	4.6	6.5	38.5	37.8	11.9	35.8	83.8	24.4	63.4
Serviços	55.3	45.7	41.9	30.8	48.6	59.5	33.4	10.4	42.6	20.4
Educação/saúde	4.7	32.6	0.0	0.0	2.7	0.0	2.8	1.0	3.4	7.4
Administração	11.2	11.4	0.0	0.0	0.0	0.0	0.2	0.0	4.1	2.3
Outro	2.2	1.7	6.5	0.0	1.4	7.1	1.9	0.3	2.1	0.9

Base is working population: E1=1 or E2=1, age 15+

Regular employee: male: E6=1, B1=1; female: E6=1, B1=2

Casual employee: male: E6=2, B1=1; female: E6=2, B1=2

Unpaid worker: male: E6=3, B1=1; female: E6=3, B1=2

Private person or household: male: E6=4, B1=1; female: E6=4, B1=2

Cells are formatted PC4

Agriculture: E8=0

Mining: E8=1

Manufacturing: E8=2

Construction: E8=3

Transportation: E8=4

Trade: E8=5

Services: E8=6

Education/Health: E8=7

Administration: E8=8

Other: E8=9

**Tabela 6.6 - Distribuição percentual da população ocupada segundo para quem trabalha, sexo e ramo de actividade**

	Governo		Parastatal		Sector privado		Pessoa/agregado privado		Total	
	Homem	Mulher	Homem	Mulher	Homem	Mulher	Homem	Mulher	Homem	Mulher
<b>Total</b>	100.0	100.0	100.0	100.0	100.0	100.0	100.0	100.0	100.0	100.0
Agricultura	0.8	0.0	0.0	0.0	0.5	0.0	6.2	1.8	4.1	1.4
Ind. Extractiva	1.7	0.0	5.7	0.0	0.9	0.0	0.0	0.7	0.6	0.6
Manufactureira	0.8	0.0	2.9	0.0	15.0	11.4	4.0	2.9	6.0	3.4
Construção	1.7	0.0	8.6	0.0	6.4	0.0	7.5	0.3	6.6	0.2
Transporte	5.1	0.0	5.7	0.0	5.9	0.0	6.5	0.0	6.2	0.0
Comércio/venda	0.0	0.0	0.0	0.0	10.9	8.9	35.0	78.4	24.4	63.4
Serviços	56.8	46.6	62.9	50.0	51.4	44.3	35.8	13.9	42.6	20.4
Educação/Saúde	7.6	37.5	2.9	16.7	3.6	27.8	2.5	1.0	3.4	7.4
Administração	24.6	15.9	11.4	33.3	3.6	5.1	0.0	0.0	4.1	2.3
Outro	0.8	0.0	0.0	0.0	1.8	2.5	2.5	0.9	2.1	0.9

Base is the working population: E1=1 or E2=1, age 15+

Government: male: E7=1, B1=1; female E7=1, B1=2

Parastatal: male: E7=2, B1=1; female E7=2, B1=2

Private business: male: E7=3, B1=1; female E7=3, B1=2

Private person or household: male: E7=4, B1=1; female E7=4, B1=2

Cells are formatted PC4

Agriculture: E8=0

Mining: E8=1

Manufacturing: E8=2

Construction: E8=3

Transportation: E8=4

Trade: E8=5

Services: E8=6

Education/Health: E8=7

Administration: E8=8

Other: E8=9

**Tabela 6.7 - Distribuição percentual da população ocupada segundo para quem trabalha, sexo e idade**

	Governo		Parastatal		Sector Privado		Pessoa/agregado privado		Total	
	Homem	Mulher	Homem	Mulher	Homem	Mulher	Homem	Mulher	Homem	Mulher
<b>Total</b>	100.0	100.0	100.0	100.0	100.0	100.0	100.0	100.0	100.0	100.0
Emprego regular	99.2	100.0	97.1	83.3	80.0	78.5	4.9	2.9	35.7	20.5
Emprego não regular	0.0	0.0	0.0	0.0	6.4	5.1	2.7	1.3	3.1	1.5
Empregado não pago	0.0	0.0	0.0	16.7	7.7	10.1	9.1	4.8	7.4	4.9
A conta própria	0.8	0.0	2.9	0.0	5.9	6.3	83.3	90.9	53.8	73.1

Base is the working population: E1=1 or E2=1, age 15+

Government: male: E7=1, B1=1; female E7=1, B1=2

Parastatal: male: E7=2, B1=1; female E7=2, B1=2

Private business: male: E7=3, B1=1; female E7=3, B1=2

Private person or household: male: E7=4, B1=1; female E7=4, B1=2

Cells are formatted PC4

Regular employee: E6=1

Casual employee: E6=2

Unpaid worker: E6=3

Self-employed: E6=4

**Tabela 6.8 - Distribuição percentual da população subempregada segundo situação de emprego**

	Emprego regular	Emprego não regular	Empregado não pago	A conta própria	Total
<b>Total</b>	25.4	4.1	1.5	68.9	100.0
<b>Área de residencia e pobreza</b>					
Rural	26.6	3.1	2.1	68.2	100.0
Pobres rurais	18.8	4.2	0.0	77.1	100.0
Urbano	22.0	7.0	0.0	71.0	100.0
Pobres urbanos	20.0	0.0	0.0	80.0	100.0
<b>Provincia de residencia</b>					
Niassa	28.7	2.0	1.5	67.8	100.0
Cabo Delgado	21.9	6.4	1.6	70.1	100.0
Nampula	28.7	2.0	1.5	67.8	100.0
Zambézia	21.9	6.4	1.6	70.1	100.0
Tete	28.7	2.0	1.5	67.8	100.0
Manica	21.9	6.4	1.6	70.1	100.0
Sofala	28.7	2.0	1.5	67.8	100.0
Inhambane	21.9	6.4	1.6	70.1	100.0
Gaza	28.7	2.0	1.5	67.8	100.0
Maputo Provincia	21.9	6.4	1.6	70.1	100.0
Maputo Cidade	28.7	2.0	1.5	67.8	100.0
<b>Sexo e idade</b>					
<b>Homem</b>	27.9	5.6	0.9	65.7	100.0
15-29	27.9	13.1	1.6	57.4	100.0
30-49	28.2	3.2	0.8	67.7	100.0
50-64	28.3	2.2	0.0	69.6	100.0
65+	0.0	0.0	0.0	100.0	100.0
<b>Mulher</b>	21.8	1.9	2.6	73.7	100.0
15-29	23.5	2.9	2.9	70.6	100.0
30-49	23.3	1.9	1.9	72.8	100.0
50-64	11.8	0.0	5.9	82.4	100.0
65+	0.0	0.0	0.0	100.0	100.0

Base is the underemployed population: E1=1 or E2=1, E9=1, age 15+

Regular employee: E6=1

Casual employee: E6=2

Unpaid worker: E6=3

Self-employed: E6=4

Total cells are formatted CJ; all others are formatted PC8

**Tabela 6.9 - Distribuição percentual da população subempregada segundo para quem trabalha**

	Governo	Parastatal	Privado formal	Privado informal	Total
<b>Total</b>	8.5	2.1	17.7	71.7	100.0
<b>Área de residencia e pobreza</b>					
Rural	9.0	2.1	17.6	71.3	100.0
Pobres rurais	10.4	0.0	12.5	77.1	100.0
Urbano	7.0	2.0	18.0	73.0	100.0
Pobres urbanos	6.7	6.7	6.7	80.0	100.0
<b>Provincia de residencia</b>					
Niassa	9.9	3.0	17.8	69.3	100.0
Cabo Delgado	7.0	1.1	17.6	74.3	100.0
Nampula	9.9	3.0	17.8	69.3	100.0
Zambézia	7.0	1.1	17.6	74.3	100.0
Tete	9.9	3.0	17.8	69.3	100.0
Manica	7.0	1.1	17.6	74.3	100.0
Sofala	9.9	3.0	17.8	69.3	100.0
Inhambane	7.0	1.1	17.6	74.3	100.0
Gaza	9.9	3.0	17.8	69.3	100.0
Maputo Provincia	7.0	1.1	17.6	74.3	100.0
Maputo Cidade	9.9	3.0	17.8	69.3	100.0
<b>Sexo e idade</b>					
<b>Homem</b>	6.0	3.4	21.5	69.1	100.0
15-29	1.6	3.3	29.5	65.6	100.0
30-49	8.1	3.2	20.2	68.5	100.0
50-64	6.5	4.3	15.2	73.9	100.0
65+	0.0	0.0	0.0	100.0	100.0
<b>Mulher</b>	12.2	0.0	12.2	75.6	100.0
15-29	8.8	0.0	17.6	73.5	100.0
30-49	14.6	0.0	11.7	73.8	100.0
50-64	5.9	0.0	5.9	88.2	100.0
65+	0.0	0.0	0.0	100.0	100.0

Base is working population: E1=1 or E2=1, E9=1, age 15+

Government: E7=1

Parastatal: E7=2

Private business: E7=3

Private person/household: E7=4

Total cells are formatted CJ; all others are formatted PC8

**Tabela 6.10 - Distribuição da população subempregada segundo ramo de actividade**

	Agricultura	Industria extract.	Industria manufact.	Construic.	Transport.	Comercio	Services	Educação Saúde	Admin.	Outro	Total
<b>Total</b>	3.1	0.0	4.6	5.7	4.4	39.1	33.7	5.9	1.3	2.3	100.0
<b>Área de residencia e pobreza</b>											
Rural	3.8	0.0	4.2	4.5	4.8	37.0	34.6	7.3	1.4	2.4	100.0
Pobres rurais	0.0	0.0	6.3	6.3	4.2	39.6	35.4	8.3	0.0	0.0	100.0
Urbano	1.0	0.0	6.0	9.0	3.0	45.0	31.0	2.0	1.0	2.0	100.0
Pobres urbanos	0.0	0.0	6.7	13.3	0.0	60.0	20.0	0.0	0.0	0.0	100.0
<b>Provincia de residencia</b>											
Niassa	1.0	0.0	3.0	3.5	3.0	43.1	34.7	7.4	1.5	3.0	100.0
Cabo Delgado	5.3	0.0	6.4	8.0	5.9	34.8	32.6	4.3	1.1	1.6	100.0
Nampula	1.0	0.0	3.0	3.5	3.0	43.1	34.7	7.4	1.5	3.0	100.0
Zambézia	5.3	0.0	6.4	8.0	5.9	34.8	32.6	4.3	1.1	1.6	100.0
Tete	1.0	0.0	3.0	3.5	3.0	43.1	34.7	7.4	1.5	3.0	100.0
Manica	5.3	0.0	6.4	8.0	5.9	34.8	32.6	4.3	1.1	1.6	100.0
Sofala	1.0	0.0	3.0	3.5	3.0	43.1	34.7	7.4	1.5	3.0	100.0
Inhambane	5.3	0.0	6.4	8.0	5.9	34.8	32.6	4.3	1.1	1.6	100.0
Gaza	1.0	0.0	3.0	3.5	3.0	43.1	34.7	7.4	1.5	3.0	100.0
Maputo Provincia	5.3	0.0	6.4	8.0	5.9	34.8	32.6	4.3	1.1	1.6	100.0
Maputo Cidade	1.0	0.0	3.0	3.5	3.0	43.1	34.7	7.4	1.5	3.0	100.0
<b>Sexo e idade</b>											
<b>Homem</b>	4.7	0.0	7.7	9.4	7.3	21.9	42.5	1.7	1.7	3.0	100.0
15-29	4.9	0.0	13.1	9.8	8.2	21.3	37.7	0.0	0.0	4.9	100.0
30-49	4.8	0.0	6.5	8.1	8.1	20.2	46.0	2.4	2.4	1.6	100.0
50-64	4.3	0.0	4.3	10.9	4.3	28.3	41.3	0.0	2.2	4.3	100.0
65+	0.0	0.0	0.0	50.0	0.0	0.0	0.0	50.0	0.0	0.0	100.0
<b>Mulher</b>	0.6	0.0	0.0	0.0	0.0	64.7	20.5	12.2	0.6	1.3	100.0
15-29	0.0	0.0	0.0	0.0	0.0	64.7	26.5	2.9	2.9	2.9	100.0
30-49	1.0	0.0	0.0	0.0	0.0	63.1	19.4	15.5	0.0	1.0	100.0
50-64	0.0	0.0	0.0	0.0	0.0	70.6	17.6	11.8	0.0	0.0	100.0
65+	0.0	0.0	0.0	0.0	0.0	100.0	0.0	0.0	0.0	0.0	100.0
Column width	8	5.33	7	7.67	6.67	5.83	6	7.17	5.67	5.5	5.5

Base is the underemployed population: E1=1 or E2=1, E9=1, age 15+

Agriculture: E8=0

Mining: E8=1

Manufacturing: E8=2

Construction: E8=3

Transportation: E8=4

Trade: E8=5

Services: E8=6

Education/Health: E8=7

Administration: E8=8

Other: E8=9

Total cells are formatted CJ; all others are formatted PC4 except trade which is PC3

**Tabela 6.11 - Distribuição percentual da população desempregada segundo causa**

	Falta de emprego	Inactividade sazonal	Estudante	Domestico	Idade	Doença	Outro	Total
<b>Total</b>	93.0	0.4	0.7	1.5	0.0	0.0	4.4	100.0
<b>Área de residencia e pobreza</b>								
Rural	92.9	0.0	0.5	1.0	0.0	0.0	5.6	100.0
Pobres rurais	97.5	0.0	0.0	0.0	0.0	0.0	2.5	100.0
Urbano	93.5	1.3	1.3	2.6	0.0	0.0	1.3	100.0
Pobres urbanos	100.0	0.0	0.0	0.0	0.0	0.0	0.0	100.0
<b>Provincia de residencia</b>								
Niassa	90.0	0.7	0.7	1.4	0.0	0.0	7.1	100.0
Cabo Delgado	96.2	0.0	0.8	1.5	0.0	0.0	1.5	100.0
Nampula	90.0	0.7	0.7	1.4	0.0	0.0	7.1	100.0
Zambézia	96.2	0.0	0.8	1.5	0.0	0.0	1.5	100.0
Tete	90.0	0.7	0.7	1.4	0.0	0.0	7.1	100.0
Manica	96.2	0.0	0.8	1.5	0.0	0.0	1.5	100.0
Sofala	90.0	0.7	0.7	1.4	0.0	0.0	7.1	100.0
Inhambane	96.2	0.0	0.8	1.5	0.0	0.0	1.5	100.0
Gaza	90.0	0.7	0.7	1.4	0.0	0.0	7.1	100.0
Maputo Provincia	96.2	0.0	0.8	1.5	0.0	0.0	1.5	100.0
Maputo Cidade	90.0	0.7	0.7	1.4	0.0	0.0	7.1	100.0
<b>Sexo e idade</b>								
<b>Homem</b>	93.9	0.0	0.7	0.0	0.0	0.0	5.4	100.0
15-29	97.8	0.0	1.1	0.0	0.0	0.0	1.1	100.0
30-49	88.9	0.0	0.0	0.0	0.0	0.0	11.1	100.0
50-64	84.2	0.0	0.0	0.0	0.0	0.0	15.8	100.0
65+	100.0	0.0	0.0	0.0	0.0	0.0	0.0	100.0
<b>Mulher</b>	92.1	0.8	0.8	3.2	0.0	0.0	3.2	100.0
15-29	95.8	0.0	1.1	1.1	0.0	0.0	2.1	100.0
30-49	76.0	4.0	0.0	12.0	0.0	0.0	8.0	100.0
50-64	100.0	0.0	0.0	0.0	0.0	0.0	0.0	100.0
65+	100.0	0.0	0.0	0.0	0.0	0.0	0.0	100.0

Base is the unemployed population: E1<>1, E2<>1, E3=1, age 15+

No work available: E4=1

Seasonal inactivity: E4=2

Student: E4=3

Household/family duties: E4=4

Age: E4=5

Infirmary: E4=6

Other: E4=7

Total cells are formatted CJ; all others are PC8

**Tabela 6.12 - Distribuição percentual da população inactiva segundo causa**

	Falta de emprego	Inactividade sazonal	Estudante	Domestico	Idade	Doença	Outro	Total
<b>Total</b>	3.8	0.1	61.2	9.4	7.4	0.9	17.2	100.0
<b>Área de residencia e pobreza</b>								
Rural	4.0	0.1	59.1	10.4	7.7	1.0	17.6	100.0
Pobres rurais	1.9	0.0	66.8	5.2	3.8	0.9	21.3	100.0
Urbano	3.3	0.0	66.3	6.9	6.6	0.7	16.2	100.0
Pobres urbanos	5.4	0.0	73.0	2.7	5.4	2.7	10.8	100.0
<b>Provincia de residencia</b>								
Niassa	4.3	0.2	59.4	9.4	7.5	0.7	18.5	100.0
Cabo Delgado	3.3	0.0	63.3	9.4	7.1	1.2	15.7	100.0
Nampula	4.3	0.2	59.4	9.4	7.5	0.7	18.5	100.0
Zambézia	3.3	0.0	63.3	9.4	7.1	1.2	15.7	100.0
Tete	4.3	0.2	59.4	9.4	7.5	0.7	18.5	100.0
Manica	3.3	0.0	63.3	9.4	7.1	1.2	15.7	100.0
Sofala	4.3	0.2	59.4	9.4	7.5	0.7	18.5	100.0
Inhambane	3.3	0.0	63.3	9.4	7.1	1.2	15.7	100.0
Gaza	4.3	0.2	59.4	9.4	7.5	0.7	18.5	100.0
Maputo Provincia	3.3	0.0	63.3	9.4	7.1	1.2	15.7	100.0
Maputo Cidade	4.3	0.2	59.4	9.4	7.5	0.7	18.5	100.0
<b>Sexo e idade</b>								
<b>Homem</b>	3.4	0.0	68.6	2.2	6.6	1.0	18.1	100.0
15-29	3.0	0.0	77.3	2.3	0.0	0.0	17.4	100.0
30-49	33.3	0.0	33.3	0.0	0.0	8.3	25.0	100.0
50-64	0.0	0.0	0.0	0.0	44.4	11.1	44.4	100.0
65+	0.0	0.0	0.0	3.2	80.6	6.5	9.7	100.0
<b>Mulher</b>	4.2	0.2	54.8	15.6	8.0	0.9	16.5	100.0
15-29	3.2	0.2	67.3	13.6	0.6	0.0	14.9	100.0
30-49	14.0	0.0	8.8	38.6	1.8	1.8	35.1	100.0
50-64	4.5	0.0	0.0	18.2	40.9	13.6	22.7	100.0
65+	0.0	0.0	0.0	2.8	91.7	2.8	2.8	100.0

Base is the inactive population: E1<>1, E2<>1, E3<>1, age 15+

No work available: E4=1

Seasonal inactivity: E4=2

Student: E4=3

Household/family duties: E4=4

Age: E4=5

Infirmary: E4=6

Other: E4=7

Total cells are formatted CJ; all others are PC8