

**MINISTRY OF PLANNING AND INVESTMENT
GENERAL STATISTICS OFFICE**

**REPORT
ON LABOUR FORCE SURVEY
First 9 months of 2012**

Hanoi, 2012

INTRODUCTION

On 5 December 2011, the General Statistics Office's Director General issued the Decision No. 810/QĐ-TCTK on conducting the 2012 Labour Force Survey and the Plan of the 2012 Labour Force Survey.

The survey collects basic information on labour market in 2012 in experience comparison with data of previous annual labour force surveys of the General Statistics Office and in accordance with the international standard. The information of this survey is used to assess the fluctuation of labour market among quarters in the year and monitor the influence of socio-economic change on labour market in Vietnam. The integrated information is presented for the whole country, urban/rural areas; 6 socio-economic regions, Hanoi City and Ho Chi Minh City for quarterly survey and 63 Centrally governed cities, provinces for yearly survey.

This report has introduced major findings from the Labour Force Survey in first three quarters of the year 2012 in order to provide information on labour force and employment to data users. The General Statistics Office hope that this report will meet basic demands for information from researchers and socio - economic policy makers, especially from those whose work relates to labour force and employment.

This survey collects information about main activities that relate to labour market for population aged 15 and over. Therefore, the indicators about labour force mentioned in the report are calculated mainly for population aged 15 and over. From the demand of Vietnam in using the indicators of labour market for population in working age (15-59 years old for male and 15-54 years old for female), so the results for this age group are separately calculated for some key indicators about unemployment and underemployment.

The 2012 Labour Force survey was completed with technical support from the International Labour Organization. The General Statistics Office

highly appreciates this assistance and would like to continue receiving future supports from the International Labour Organization in the coming surveys.

The General Statistics Office hope that this report will meet basic demands for information from researchers and socio-economic policy makers, especially from those whose work relates to labour and employment issue and warmly welcome all constructive comments from readers.

Comments and detailed information, please contact the following address: Department of Population and Labour Statistics, General Statistics Office, 6B Hoang Dieu street, Ha Noi.

Tel: +(84 4) 38 230 100, 38 433 353;

Fax: +(84 4) 37 339 287;

Email: dansolaodong@gso.gov.vn

GENERAL STATISTICS OFFICE

TABLE OF CONTENTS

Introduction	iii
Table of contents	v
I. SUMMARY	1
II. MAJOR FINDINGS	4
1. Labour Force.....	4
1.1 Proportion of labour force and labour force participation rate.....	4
1.2 Age structure of labour force	5
2. Employment.....	6
3. Underemployment and unemployment	9
3.1 Number of underemployed people and number of unemployed people.....	9
3.2 Underemployment rate and unemployment rate.....	11
III. TABULATED TABLES.....	15

I. SUMMARY

- Until the time-point of 1 October 2012, the entire country had 68.7 million people aged 15 years and older, of which there were 53.1 million people aged 15 years and older who belonged to the labour force (including 52.1 million employed people and nearly 1 million unemployed people). The labour force in rural area is the most and made up 69.4%.
- The labour force participation rate in rural areas was higher than for urban areas. At the national level, this rate of the second quarter was higher than the first quarter and the third quarter was higher than the second quarter. For urban areas, this rate was almost unchanged among quarters.
- Employed population of quarter 3 has increased than that of quarter 1 by 1.1 million people, mainly increased in the Red River Delta (286 thousand workers), the Northern Midlands and Mountains (252 thousand workers) and the North and South Central Coast (212 thousand workers).
- The employment to population ratio of population aged 15 and over of the first 9 months of 2012 was 75.4%. There is a considerable differential in employment to population ratio between urban and rural areas, males and females. This ratio of the quarter 2 was increased as compared to the quarter 1 in all regions, while that of quarter 3 was increased as compared to the quarter 2 in only three regions: Northern Midlands and Mountains, Red River Delta and North and South Central Coast; that of the remaining regions fell.
- Workers in sector “Foreign investment” and “State” tend to decrease gradually over the quarters of 2012. Conversely, sector “Non-State” increased sharply.
- At the time-point of 1 October 2012, in entire country, there are 984 thousand unemployed people and 1369 thousands underemployed people
- Trend of change in the number of unemployed people and the number of unemployed people for the first 9 months of 2012 took place the same in both of urban and rural areas, male, female and most of the socio-economic regions. Change occurred in the quarterly trend, quarter 2 decreased versus quarter 1 but quarter 3 increased again.
- In the first 9 months of 2012, the number of unemployed people aged 15-24 accounts for almost a half (46.8%) out of total unemployed people, this proportion in urban areas is 38.1% and that in the rural areas is 56.2%.

Meanwhile, the number of underemployed people aged 15-24 accounts for only 24.2% out of total underemployed people and there is no significant difference between urban and rural areas.

- Underemployment rate of rural workers is higher than that in urban areas. The national underemployment rate had the high trend in the first months of the year and lower in the last months of the year. Notably, the underemployment rate in urban areas tends to increase as compared to 2011.
- In the early months of 2012, the unemployment rate in the entire country was not high. Specifically, the urban unemployment rate in the first quarter of 2012 was slightly higher than that in the third quarter and the fourth quarter of 2011 (3.46% versus 3.43% and 2.99%).

Some key indicators of the labour market in the first 9 months of 2012

Indicator	Average in first 9 months	Quarter 1	Quarter 2	Quarter 3
1. Population 15+ (thousand persons)	68 396	68 011	68 362	68 742
Male	33 222	33 038	33 180	33 379
Female	35 174	34 973	35 182	35 363
Urban	22 904	22 476	22 800	23 025
Rural	45 492	45 535	45 562	45 717
2. Labour force (thousand persons)	52 520	51 978	52 581	53 098
Male	26 996	26 701	26 981	27 313
Female	25 524	25 277	25 600	25 785
Urban	16 066	15 773	16 038	16 154
Rural	36 454	36 205	36 543	36 944
3. Employed population (thousand persons)	51 567	50 998	51 699	52 114
Male	26 565	26 234	26 596	26 873
Female	25 002	24 764	25 103	25 241
Urban	15 572	15 263	15 574	15 658
Rural	35 995	35 735	36 125	36 456
4. Unemployed population (thousand persons)	953	981	882	984
Male	431	466	385	439
Female	522	515	497	545
Urban	494	510	464	496
Rural	459	471	418	488
5. Underemployed population (thousand persons)	1 347	1 494	1 175	1 369
Male	746	828	666	754
Female	601	666	509	615
Urban	246	321	182	225
Rural	1 101	1 173	993	1 144

Indicator	Average in first 9 months	Quarter 1	Quarter 2	Quarter 3
6. Average income of wage worker (thousand VND)	3 747	3 905	3 573	3 766
Male	3 920	4 073	3 764	3 924
Female	3 496	3 667	3 293	3 532
Urban	4 464	4 802	4 211	4 401
Rural	3 138	3 157	3 036	3 220
7. Age structure of labour force (%)	100.0	100.0	100.0	100.0
15-19	5.3	5.3	5.1	5.3
20-24	10.1	10.1	10.1	9.8
25-29	12.3	12.5	12.2	12.2
30-34	12.0	12.0	12.1	11.9
35-39	12.5	12.8	12.4	12.4
40-44	12.3	12.2	12.3	12.3
45-49	11.9	12.0	12.0	12.0
50-54	9.7	9.6	9.8	9.9
55-59	6.6	6.5	6.6	6.7
60-64	3.6	3.4	3.7	3.8
65+	3.6	3.6	3.8	3.7
8. Labour force participation rate (%)	76.8	76.4	76.9	77.2
Male	81.3	80.8	81.3	81.8
Female	72.6	72.3	72.8	72.9
Urban	70.1	70.2	70.3	70.2
Rural	80.1	79.5	80.2	80.8
9. Employment to population ratio of population aged 15 and over (%)	75.4	75.0	75.6	75.8
Male	80.0	79.4	80.2	80.5
Female	71.1	70.8	71.4	71.4
Urban	68.0	67.9	68.3	68.0
Rural	79.1	78.5	79.3	79.7
10. Underemployment rate in the working age (%)	2.74	3.09	2.39	2.75
Male	2.93	3.29	2.61	2.94
Female	2.53	2.85	2.14	2.52
Urban	1.60	2.14	1.19	1.46
Rural	3.26	3.51	2.93	3.33
11. Unemployment rate in the working age (%)	2.01	2.08	1.87	2.06
Male	1.71	1.86	1.54	1.72
Female	2.36	2.34	2.25	2.45
Urban	3.30	3.46	3.12	3.31
Rural	1.42	1.46	1.29	1.48

II. MAJOR FINDINGS

1. Labour Force

1.1 Proportion of labour force and labour force participation rate

Over the past three decades, although there has been a substantial increase in the proportion of the labour force in urban areas, yet up to now, approximately 69.4% of the labour force in Vietnam is still concentrated in rural areas. Out of a total of labour force of the entire country, males accounted for the lower proportion than that of females (48.6% of females versus 51.4% of males).

Table 1: Proportion of labour force and labour force participation rate in the first 9 months of 2012

Unit: Percentage

Residence/Socio-economic region	Proportion of labour force in the first 9 months of 2012:				Labour force participation rate:			
	Total	Male	Female	% Female	Total	Quarter 1	Quarter 2	Quarter 3
Entire country	100.0	100.0	100.0	48.6	76.8	76.4	76.9	77.2
Urban	30.6	30.7	30.5	48.5	70.1	70.2	70.3	70.2
Rural	69.4	69.3	69.5	48.7	80.1	79.5	80.2	80.8
Socio-economic region								
Northern Midlands and Mountains	13.8	13.4	14.2	50.1	84.3	83.7	84.2	85.3
Red River Delta (*)	15.3	14.7	15.9	50.5	75.6	74.5	75.5	76.9
North and South Central Coast	21.6	21.1	22.0	49.6	77.7	77.4	77.7	78.3
Central Highlands	6.0	6.1	5.9	48.0	83.1	82.9	83.4	83.0
Southeast (*)	8.7	8.8	8.5	47.7	77.9	77.7	78.4	78.1
Mekong River Delta	19.8	20.9	18.7	45.8	77.6	77.2	78.0	77.7
Ha Noi city	7.0	6.9	7.2	49.6	69.8	69.7	69.9	70.1
Ho Chi Minh city	7.8	8.1	7.6	47.0	65.7	66.4	65.8	65.1
(*) Red River Delta excludes Hanoi City and Southeast excludes Ho Chi Minh City.								

Among the 8 socio-economic regions, 56.6% of total nation's labour force is concentrated in three regions: the Red River Delta, the North and South Central Coast and the Mekong River Delta. Thus, the rural areas and these 3 socio-economic regions are our addressed for national programs to utilize the labour force, create employment and provide occupational training over the coming years.

The labour force participation rate in rural areas is higher than for urban areas, the difference in data of the first 9 months is 10.0 percent points. At the national level, the labour force participation rate of quarter 2 was higher than that of quarter 1 by 0.5 percent points and that of quarter 3 was higher than that of quarter 4 by 0.4 percent points. In urban areas, the labour force participation rate has nearly unchanged among quarters.

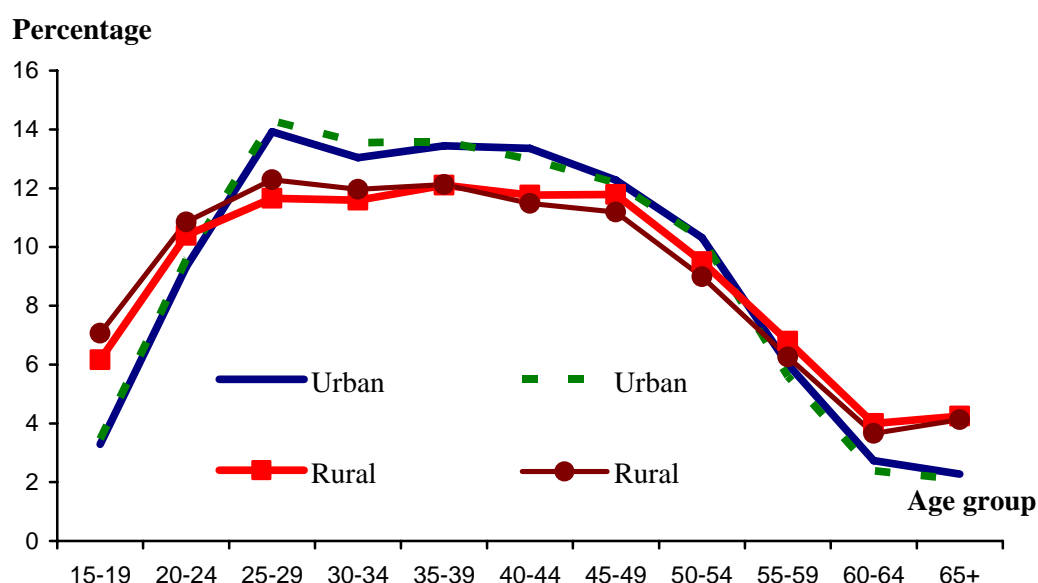
It is important to notice that while the labour force participation rate is highest in the two mountainous regions of the Northern Midlands and Mountains (84.3%) and the Central Highlands (83.1%), then it is the lowest in two largest socio-economic centers of the entire country, that is Hanoi (69.8%) and Ho Chi Minh City (65.7%).

1.2 Age structure of labour force

The structure of the labour force by age group reflects the demographic and socio-economic situation. For example, high school attendance rates in the population lead to low labour force participation rates in younger ages. Similarly, high living standards of the population lead to reductions in labour force participation of the older age population.

There are substantial differences in the age structure of the labour force across urban and rural areas. The share of the labour force in young ages (15–24 years) and in older ages (55 years and above) of urban areas is lower than in rural areas. In contrast, the share of the labour force in the main working ages (25–54 years) in urban areas is higher than in rural areas (Figure 1). This indicates that urban people tend to enter the labour force later and leave the labour force earlier than people in rural areas. The main reason to explain this phenomenon is that the young population in urban areas tend to spend longer in school and older people in urban areas tend to retire earlier than in rural areas (partly because retired people in urban areas usually don't continue to participate in economic activities). Figure 1 also indicates, Vietnam has the young labour force, with more than half of the labour force in the age group 20-39 years.

Figure 1: Proportion of labour force by age group and urban/rural residence in 2011 and the first 9 months of 2012



2. Employment

Table 2: Proportion of employed population and employment to population ratio in first 9 months of 2012

Unit: Percentage

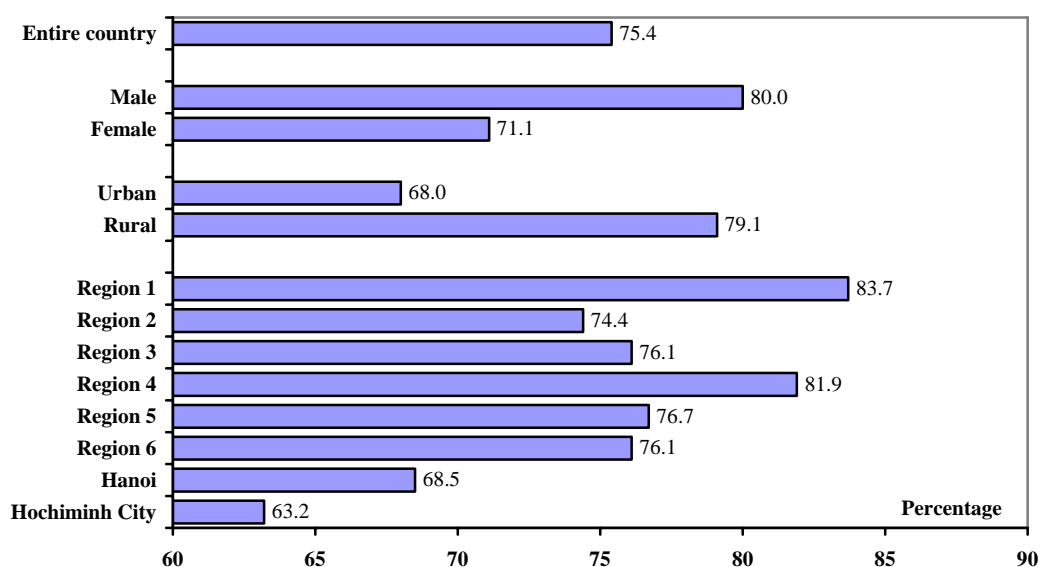
Residence/Socio-economic region	Proportion of employed population in the first 9 months of 2012:				Employment to population ratio:			
	Total	Male	Female	% Female	Total	Quarter 1	Quarter 2	Quarter 3
Entire country	100.0	100.0	100.0	48.5	75.4	75.0	75.6	75.8
Urban	30.2	30.3	30.1	48.4	68.0	67.9	68.3	68.0
Rural	69.8	69.7	69.9	48.5	79.1	78.5	79.3	79.7
Socio-economic region								
Northern Midlands and Mountains	13.9	13.5	14.4	50.1	83.7	83.0	83.6	84.7
Red River Delta (*)	15.3	14.7	16.0	50.7	74.4	73.3	74.3	75.7
North and South Central Coast	21.5	21.1	22.0	49.6	76.1	75.8	76.4	76.6
Central Highlands	6.0	6.1	5.9	47.8	81.9	81.7	82.3	81.7
Southeast (*)	8.7	8.9	8.5	47.6	76.7	76.3	77.1	77.1
Mekong River Delta	19.8	21.0	18.5	45.4	76.1	75.7	76.6	76.1
Ha Noi city	7.0	6.9	7.2	49.6	68.5	68.4	68.6	68.5
Ho Chi Minh city	7.7	8.0	7.4	46.7	63.2	63.6	63.6	62.8
(*) Red River Delta excludes Hanoi City and Southeast excludes Ho Chi Minh City.								

Table 2 shows the distribution of employed population by sex and employment to population ratio in the first 9 months of 2012. Observing data shows that the employment to population ratio of the quarter 2 was increased as compared to the quarter 1 in all regions, while this ratio of the quarter 3 was increased as compared to the quarter 2 in only three regions, that is Northern Midlands and Mountains, Red River Delta and North and South Central Coast, that of the remaining regions fell.

Employed population of the third quarter increased by 1.1 million people as compared to the first quarter, mainly increased in the Red River Delta (286 thousand employees), Northern Midlands and Mountains (up 252 thousand employees) and the North and South Central Coast (an increase of 212 thousand employees).

Figure 2 shows the employment to population ratio of the population aged 15 and over in the first 9 months of 2012. As shown in the results, the employment to population ratio stood at 75.4%. There is a considerable differential in the employment to population ratio between urban and rural areas, males and females. The employment to population ratio in urban areas is 11.1 percent points lower than that in rural areas. The differential in employment to population ratio between males and females is 8.9 percent points.

Figure 2: Employment to population ratio of the population aged 15 and over in the first 9 months of 2012



Data on the employment to population ratio by socio-economic regions shows that it is the highest in two mountainous regions of the Northern Midlands and Mountains (83.7%) and Central Highlands (81.9%) and the lowest in two most economically developed centers, namely Ha Noi (68.5%) and Ho Chi Minh City (63.2%).

Table 3 reflects the distribution of employed population by industrial sector and economic sector in the first 9 months of 2012.

Employed population of sector “Foreign investment” and “State” tend to decrease gradually over the quarters of 2012. In contrast, sector “Non-state” including “Agriculture, forestry, fishing household/Self-employed”, “Household enterprise”, “Private enterprise” and “Cooperative/collective” increases significantly. This shows that the domestic manufacturing sector continues to expand.

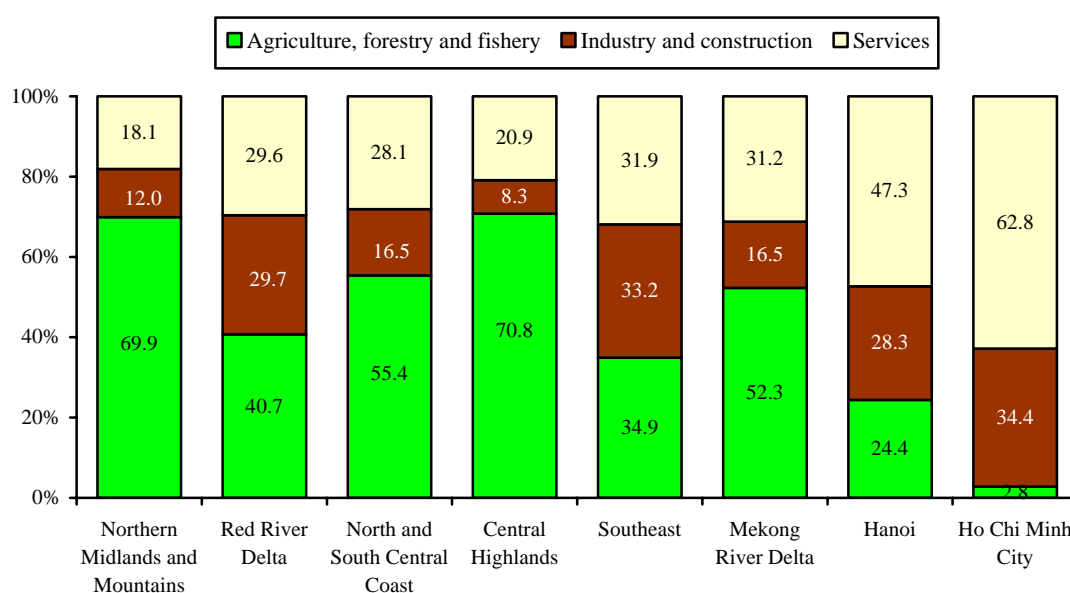
Table 3: Structure of employed population by industrial sector and economic sector in the first 9 months of 2012

Unit: Percentage

Sex/Residence/Region	Industrial sector:			Economic sector:		
	Agriculture, forestry and fishing	Industry and construction	Services	State	Non-state	Foreign investment
Entire country	47.5	21.0	31.5	10.4	86.3	3.3
Urban	15.1	27.6	57.3	19.9	74.3	5.8
Rural	61.4	18.3	20.3	6.3	91.5	2.2
Sex						
Male	45.5	25.1	29.4	10.9	86.8	2.3
Female	49.5	16.8	33.7	9.9	85.8	4.4
Socio-economic region						
Northern Midlands and Mountains	69.9	12.0	18.1	9.7	89.1	1.2
Red River Delta (*)	40.7	29.7	29.6	10.0	86.4	3.6
North and South Central Coast	55.4	16.5	28.1	9.9	89.2	0.9
Central Highlands	70.8	8.3	20.9	9.5	90.2	0.3
Southeast (*)	34.9	33.2	31.9	10.5	74.2	15.3
Mekong River Delta	52.3	16.5	31.2	7.0	91.8	1.2
Ha Noi city	24.4	28.3	47.3	19.4	77.9	2.6
Ho Chi Minh city	2.8	34.4	62.8	15.4	76.9	7.7
(*) Red River Delta excludes Hanoi City and Southeast excludes Ho Chi Minh City.						

Figure 3 presents the proportion of employed population by industrial sector for each region. The data show that Ho Chi Minh City has the most developed economic structure, with 97.2% of employed population working in industry, construction and services. In the mountainous and coastal areas, the proportion of labour working in sector of “Agriculture, forestry and fishery” remains quite high. This figure in the Central Highlands is 70.8%, that of the Northern Midlands and Mountains is 69.9% and that of the North and South Central Coast at 55.4%.

Figure 3: Proportion of employed population by industrial sector and region in the first 9 months of 2012



3. Underemployment and unemployment

3.1 Number of underemployed people and number of unemployed people

The survey results show that trend of change in number of unemployed people in the first 9 months of 2012 is the same in both urban and rural areas, male, female and most of the socio-economic regions (except Southeast and Hanoi). Change occurred in the trend that in the second quarter, number of unemployed people decreased as compared to the first quarter but the third quarter it re-increased. The Southeast and Hanoi are two regions with the variation of the unemployed people with different and opposite trend. Hanoi tends to increase the number of unemployed people over the quarters, while that of the Southeast tends to decrease over the quarters.

Trend of change in the number of underemployed people in the first 9 months of 2012 show a similarity of that of unemployed people. This trend occurs in both urban and rural areas, male and female, and most socio-economic regions (except Red River Delta and Hanoi). The Red River Delta and Hanoi are two regions with the variation of the underemployed people with different and opposite trend. Hanoi tends to increase the number of people underemployed people over the quarters, while that of the Red River Delta tends to decrease over the quarters.

Table 4: Number of underemployed and number of unemployed people in the first 9 months of 2012

Unit: Thousand people

Sex/Residence/Region	Number of underemployed people				Number of unemployed people			
	Total	Q 1	Q 2	Q 3	Total	Q 1	Q 2	Q 3
Entire country	1 347	1 494	1 175	1 369	953	981	882	984
Urban	246	321	182	225	494	510	464	496
Rural	1 100	1 174	992	1 144	459	470	419	488
Sex								
Male	746	828	666	754	431	466	385	439
Female	600	666	508	615	522	514	497	545
Socio-economic region								
Northern Midlands and Mountains	124	142	91	140	51	53	46	50
Red River Delta (*)	258	266	257	252	128	130	126	128
North and South Central Coast	309	363	238	324	222	220	192	250
Central Highlands	83	92	65	94	45	44	39	52
Southeast (*)	67	100	50	53	75	82	78	59
Mekong River Delta	448	467	428	451	206	208	198	211
Ha Noi city	35	27	36	42	74	68	69	85
Ho Chi Minh city	21	38	10	12	153	174	134	148
(*) Red River Delta excludes Hanoi City and Southeast excludes Ho Chi Minh City.								

At the time-point of 1 October 2012, in entire country, there are 984 thousand unemployed people and 1369 thousands underemployed people. Urban areas accounted for 50.4% and females occupied 55.4% of total unemployed in the third quarter of 2012. Rural areas accounted for 84.4% and females accounted for 43.2% of total underemployed in the third quarter of 2012.

In the first 9 months of 2012, the number of unemployed people aged 15-24 accounts for 46.8% out of total unemployed people, this proportion in

urban areas is 38.1% and that in the rural areas is 56.2%. Meanwhile, the number of underemployed people aged 15-24 accounts for only 24.2% out of total underemployed people and there is no significant difference between urban and rural areas.

Unemployment among the youth and females are becoming issues of concern to society, youth and women those are labour groups considered most vulnerable by the fluctuations in the labour market.

Table 5: Proportion of number of underemployed and unemployed people in the 9 months of 2012

Unit: Percentage

Age group	Proportion of number of underemployed people				Proportion of number of unemployed people			
	Total	Male	Female	% Female	Total	Male	Female	% Female
Total	100.0	100.0	100.0	44.6	100.0	100.0	100.0	54.8
15-24	24.2	28.3	19.1	35.2	46.8	47.4	46.4	54.2
25-54	67.3	64.2	71.0	47.1	48.9	44.2	52.7	59.1
55-59	5.3	4.5	6.2	53.0	3.9	7.9	0.5	7.0
60 and over	3.2	3.0	3.6	48.8	0.4	0.4	0.4	55.2
Urban	100.0	100.0	100.0	46.1	100.0	100.0	100.0	52.0
15-24	21.3	22.4	20.0	43.2	38.1	39.2	37.2	50.7
25-54	69.5	67.7	71.6	47.5	56.6	50.8	62.0	57.0
55-59	5.4	5.4	5.5	46.7	4.8	9.5	0.6	6.0
60 and over	3.8	4.5	2.9	35.8	0.4	0.5	0.2	31.7
Rural	100.0	100.0	100.0	44.2	100.0	100.0	100.0	57.7
15-24	24.8	29.5	18.9	33.7	56.2	57.5	55.3	56.8
25-54	66.7	63.5	70.9	47.0	40.5	36.2	43.7	62.2
55-59	5.2	4.3	6.4	54.5	2.8	6.0	0.4	8.8
60 and over	3.2	2.7	3.8	52.2	0.5	0.3	0.6	75.5

3.2 Underemployment rate and unemployment rate

To get the real picture of employment status, especially in developing countries, where levels of social security is low then the simultaneous consideration of two indicators of unemployment and underemployment are needed. As recommended by the International Labour Organization, these two indicators are meant to supplement and explain to each other. The underemployment rate and the unemployment rate below are calculated for population in the working age, namely including those from 15-59 years for men and 15-54 years for women.

In Vietnam, the urban unemployment rate is always higher than that in rural areas and that figure of females is higher than that of males. The unemployment rate of the regions is very different from each other, that of Ho Chi Minh City is the highest. This shows that the employment needs of urban, large urban areas and of women is a concerning matter.

Underemployment rate of rural labour is higher than that in urban areas, while there is no significant difference in the level of underemployment between men and women. The Red River Delta and Mekong River Delta have the highest underemployment rate.

Table 6: Underemployment rate and unemployment rate in the working age in the first 9 months of 2012

Unit: Percentage

Sex/Residence/Region	Underemployment rate				Unemployment rate			
	Total	Q 1	Q 2	Q 3	Total	Q 1	Q 2	Q 3
Entire country	2.74	3.09	2.39	2.75	2.01	2.08	1.87	2.06
Urban	1.60	2.14	1.19	1.46	3.30	3.46	3.12	3.31
Rural	3.26	3.51	2.93	3.33	1.42	1.46	1.29	1.48
Sex								
Male	2.93	3.29	2.61	2.94	1.71	1.86	1.54	1.72
Female	2.53	2.85	2.14	2.52	2.36	2.34	2.25	2.45
Socio-economic region								
Northern Midlands and Mountains	1.86	2.13	1.37	2.07	0.77	0.82	0.72	0.75
Red River Delta (*)	3.45	3.55	3.45	3.34	1.83	1.91	1.81	1.79
North and South Central Coast	3.03	3.57	2.32	3.16	2.21	2.18	1.93	2.46
Central Highlands	2.90	3.24	2.26	3.26	1.55	1.56	1.31	1.78
Southeast (*)	1.52	2.35	1.14	1.10	1.75	1.97	1.83	1.36
Mekong River Delta	4.60	4.88	4.38	4.55	2.21	2.22	2.11	2.29
Ha Noi city	0.98	0.77	1.03	1.12	2.15	2.02	2.05	2.46
Ho Chi Minh city	0.54	0.98	0.26	0.32	3.92	4.47	3.44	3.80
(*) Red River Delta excludes Hanoi City and Southeast excludes Ho Chi Minh City.								

In the first 9 months of 2012, for every 1000 people who are working in rural areas then there are about 33 underemployed people; rural underemployment rate is 1.66 percentage points higher than urban areas. The underemployment rate in urban areas tends to increase as compared to 2011.

The underemployment rate of the entire country holds the high trend in the first months of the year and is the lower in the last months of the year. The

cause of this phenomenon is due to the production establishment are often loosen work at the beginning of the year and to boost production again at the end of the year.

In the early months of 2012, despite the slow economic growth but the unemployment rate in Vietnam was not high, specifically the urban unemployment rate in the first quarter of 2012 was slightly higher than the third quarter and the fourth quarter of 2011 (3.46% versus 3.43% and 2.99%). This can be explained by the level of development of the economy is low, people's living is not high, the social security system has not developed so workers do not suffer the long-term unemployment status, they accept a certain number of jobs, often in the informal sector with low income and unstable to support themselves and their families.

Table 7: Underemployment rate and unemployment rate in 2009-2012

Unit: Percentage

	Underemployment rate			Unemployment rate		
	Total	Urban	Rural	Total	Urban	Rural
2009	5.41	3.19	6.30	2.90	4.60	2.25
2010	3.57	1.82	4.26	2.88	4.29	2.30
2011	2.96	1.58	3.56	2.22	3.60	1.60
Quarter 1 in 2011	3.86	2.06	4.64	2.82	4.35	2.14
Quarter 2 in 2011	2.82	1.55	3.37	2.22	3.59	1.62
Quarter 3 in 2011	2.55	1.37	3.06	1.98	3.43	1.34
Quarter 4 in 2011	2.58	1.35	3.12	1.80	2.99	1.26
First 9 months of 2012	2.74	1.60	3.26	2.01	3.30	1.42
Quarter 1 in 2012	3.09	2.14	3.51	2.08	3.46	1.46
Quarter 2 in 2012	2.39	1.19	2.93	1.87	3.12	1.29
Quarter 3 in 2012	2.75	1.46	3.33	2.06	3.31	1.48

III. TABULATED TABLES

Table 1

**LABOUR FORCE AGED 15 AND OVER BY SEX, URBAN/RURAL RESIDENCE
AND SOCIO-ECONOMIC REGION IN FIRST 9 MONTHS OF 2012**

Unit: Thousand persons

No	Socio-economic region	Quarter 4 in 2011 (Timepoint of 1/1/2012)			Quarter 1 in 2012 (Timepoint of 1/4/2012)			Quarter 2 in 2012 (Timepoint of 1/7/2012)			Quarter 3 in 2012 (Timepoint of 1/10/2012)		
		Total	Male	Female	Total	Male	Female	Total	Male	Female	Total	Male	Female
TOTAL		52 538.5	26 942.3	25 596.1	51 978.4	26 700.9	25 277.5	52 581.3	26 980.5	25 600.7	53 098.5	27 312.5	25 785.9
R1	Northern Midlands and Mountains	7 199.8	3 571.2	3 628.5	7 119.6	3 552.6	3 567.0	7 223.6	3 594.2	3 629.4	7 367.9	3 681.5	3 686.4
R2	Red River Delta (*)	8 209.7	4 049.0	4 160.7	7 902.3	3 918.8	3 983.5	8 008.5	3 958.6	4 049.9	8 186.6	4 040.2	4 146.4
R3	North and South Central Coast	11 352.5	5 742.8	5 609.8	11 239.1	5 625.6	5 613.6	11 352.3	5 722.0	5 630.3	11 481.1	5 794.3	5 686.8
R4	Central Highlands	3 137.3	1 618.4	1 518.9	3 124.8	1 622.2	1 502.6	3 147.3	1 639.8	1 507.5	3 161.3	1 641.2	1 520.1
R5	Southeast (*)	4 538.7	2 375.0	2 163.7	4 459.5	2 343.4	2 116.1	4 596.6	2 398.9	2 197.7	4 599.7	2 396.8	2 202.9
R6	Mekong River Delta	10 385.7	5 569.9	4 815.8	10 350.3	5 613.7	4 736.6	10 459.3	5 636.4	4 822.8	10 446.7	5 678.5	4 768.2
R7	Ha noi City	3 646.0	1 838.5	1 807.5	3 682.7	1 854.6	1 828.1	3 676.5	1 847.2	1 829.4	3 733.8	1 879.7	1 854.0
R8	Ho Chi Minh City	4 068.8	2 177.6	1 891.2	4 100.1	2 170.1	1 930.0	4 117.2	2 183.5	1 933.8	4 121.3	2 200.2	1 921.1
URBAN		15 713.9	8 153.9	7 560.0	15 773.4	8 097.4	7 675.9	16 037.9	8 264.4	7 773.5	16 154.1	8 343.4	7 810.7
R1	Northern Midlands and Mountains	1 138.5	554.7	583.9	1 165.8	568.3	597.5	1 186.6	574.9	611.7	1 204.8	580.6	624.1
R2	Red River Delta (*)	1 857.5	969.9	887.5	1 817.2	940.0	877.2	1 860.2	962.5	897.7	1 885.5	980.0	905.5
R3	North and South Central Coast	2 876.4	1 454.9	1 421.5	2 872.0	1 430.2	1 441.8	2 958.1	1 494.2	1 463.9	2 967.9	1 496.5	1 471.4
R4	Central Highlands	895.4	447.0	448.4	899.9	454.1	445.8	898.6	455.8	442.8	899.5	453.4	446.1
R5	Southeast (*)	1 720.8	863.1	857.7	1 707.1	846.3	860.8	1 745.4	874.6	870.8	1 757.6	867.4	890.2
R6	Mekong River Delta	2 423.8	1 270.7	1 153.1	2 465.8	1 287.7	1 178.0	2 520.9	1 305.5	1 215.4	2 522.4	1 316.4	1 205.9
R7	Ha noi City	1 453.8	758.8	695.0	1 437.4	738.4	699.0	1 449.3	741.9	707.4	1 476.5	765.6	710.9
R8	Ho Chi Minh City	3 347.6	1 834.7	1 512.9	3 408.2	1 832.5	1 575.8	3 418.8	1 855.0	1 563.9	3 439.9	1 883.4	1 556.5

Table 1 (Continued)

Unit: Thousand persons

No	Socio-economic region	Quarter 4 in 2011 (Timepoint of 1/1/2012)			Quarter 1 in 2012 (Timepoint of 1/4/2012)			Quarter 2 in 2012 (Timepoint of 1/7/2012)			Quarter 3 in 2012 (Timepoint of 1/10/2012)		
		Total	Male	Female	Total	Male	Female	Total	Male	Female	Total	Male	Female
RURAL		36 824.6	18 788.5	18 036.1	36 205.0	18 603.5	17 601.6	36 543.3	18 716.2	17 827.2	36 944.4	18 969.1	17 975.3
R1	Northern Midlands and Mountains	6 061.2	3 016.5	3 044.7	5 953.8	2 984.3	2 969.5	6 037.0	3 019.2	3 017.7	6 163.1	3 100.9	3 062.3
R2	Red River Delta (*)	6 352.2	3 079.0	3 273.2	6 085.1	2 978.8	3 106.3	6 148.3	2 996.2	3 152.2	6 301.1	3 060.2	3 240.9
R3	North and South Central Coast	8 476.1	4 287.9	4 188.3	8 367.2	4 195.4	4 171.8	8 394.2	4 227.9	4 166.4	8 513.3	4 297.8	4 215.5
R4	Central Highlands	2 241.9	1 171.4	1 070.5	2 224.9	1 168.1	1 056.8	2 248.7	1 184.0	1 064.7	2 261.8	1 187.8	1 074.0
R5	Southeast (*)	2 818.0	1 511.9	1 306.1	2 752.4	1 497.1	1 255.3	2 851.2	1 524.2	1 326.9	2 842.1	1 529.4	1 312.7
R6	Mekong River Delta	7 961.9	4 299.2	3 662.7	7 884.5	4 326.0	3 558.6	7 938.4	4 330.9	3 607.4	7 924.4	4 362.1	3 562.3
R7	Ha noi City	2 192.1	1 079.7	1 112.4	2 245.3	1 116.2	1 129.1	2 227.2	1 105.2	1 122.0	2 257.3	1 114.1	1 143.1
R8	Ho Chi Minh City	721.2	342.9	378.3	691.9	337.6	354.2	698.4	328.5	369.9	681.4	316.8	364.6

Note: (*) Red River Delta excludes Hanoi City and Southeast excludes Ho Chi Minh City.

Table 2

**LABOUR FORCE IN THE WORKING AGE BY SEX, URBAN/RURAL RESIDENCE
AND SOCIO-ECONOMIC REGION IN FIRST 9 MONTHS OF 2012**

Unit: Thousand persons

No	Socio-economic region	Quarter 4 in 2011 (Timepoint of 1/1/2012)			Quarter 1 in 2012 (Timepoint of 1/4/2012)			Quarter 2 in 2012 (Timepoint of 1/7/2012)			Quarter 3 in 2012 (Timepoint of 1/10/2012)		
		Total	Male	Female	Total	Male	Female	Total	Male	Female	Total	Male	Female
TOTAL		47 122.3	25 096.5	22 025.8	46 739.2	24 906.8	21 832.5	46 947.4	25 020.7	21 926.7	47 411.4	25 378.0	22 033.4
R1	Northern Midlands and Mountains	6 545.7	3 365.9	3 179.9	6 452.7	3 339.9	3 112.8	6 470.3	3 357.4	3 112.9	6 620.8	3 439.6	3 181.2
R2	Red River Delta (*)	7 066.5	3 664.1	3 402.5	6 837.3	3 561.6	3 275.8	6 942.5	3 601.3	3 341.2	7 052.6	3 701.2	3 351.4
R3	North and South Central Coast	9 919.7	5 260.2	4 659.5	9 899.2	5 171.4	4 727.8	9 850.5	5 191.9	4 658.6	10 033.5	5 316.5	4 717.0
R4	Central Highlands	2 883.3	1 528.7	1 354.5	2 845.2	1 521.8	1 323.4	2 884.4	1 544.1	1 340.3	2 920.0	1 548.2	1 371.9
R5	Southeast (*)	4 217.3	2 255.8	1 961.5	4 145.7	2 222.3	1 923.3	4 255.3	2 274.7	1 980.6	4 277.8	2 285.4	1 992.4
R6	Mekong River Delta	9 324.2	5 181.1	4 143.0	9 300.0	5 217.4	4 082.5	9 295.0	5 196.6	4 098.4	9 229.0	5 198.0	4 031.0
R7	Ha noi City	3 314.2	1 736.7	1 577.5	3 375.0	1 771.2	1 603.8	3 356.2	1 752.4	1 603.8	3 379.9	1 775.5	1 604.4
R8	Ho Chi Minh City	3 851.5	2 104.0	1 747.5	3 884.1	2 101.2	1 783.0	3 893.1	2 102.3	1 790.8	3 897.8	2 113.6	1 784.2
URBAN		14 558.7	7 764.1	6 794.6	14 602.6	7 711.6	6 891.0	14 796.9	7 834.8	6 962.0	14 920.2	7 917.9	7 002.3
R1	Northern Midlands and Mountains	1 039.8	523.2	516.6	1 061.1	536.3	524.8	1 066.0	538.0	527.9	1 085.2	544.3	540.9
R2	Red River Delta (*)	1 700.1	916.5	783.6	1 660.7	891.4	769.3	1 704.9	915.1	789.8	1 720.6	927.3	793.3
R3	North and South Central Coast	2 610.5	1 368.0	1 242.5	2 604.7	1 337.2	1 267.5	2 661.9	1 388.9	1 273.0	2 672.6	1 399.0	1 273.5
R4	Central Highlands	819.9	422.1	397.8	831.9	431.0	400.9	829.1	431.3	397.8	834.2	430.9	403.3
R5	Southeast (*)	1 634.2	832.9	801.3	1 627.5	815.4	812.0	1 661.9	842.5	819.4	1 676.2	839.6	836.6
R6	Mekong River Delta	2 213.1	1 198.5	1 014.6	2 242.1	1 214.8	1 027.3	2 288.2	1 223.0	1 065.2	2 300.0	1 235.5	1 064.5
R7	Ha noi City	1 368.5	729.6	638.9	1 349.5	712.5	637.1	1 358.3	714.6	643.8	1 382.4	736.5	645.9
R8	Ho Chi Minh City	3 172.6	1 773.2	1 399.4	3 225.2	1 773.1	1 452.1	3 226.7	1 781.5	1 445.2	3 249.0	1 804.8	1 444.3

Table 2 (Continued)

Unit: Thousand persons

No	Socio-economic region	Quarter 4 in 2011 (Timepoint of 1/1/2012)			Quarter 1 in 2012 (Timepoint of 1/4/2012)			Quarter 2 in 2012 (Timepoint of 1/7/2012)			Quarter 3 in 2012 (Timepoint of 1/10/2012)		
		Total	Male	Female	Total	Male	Female	Total	Male	Female	Total	Male	Female
RURAL		32 563.6	17 332.4	15 231.2	32 136.7	17 195.2	14 941.5	32 150.5	17 185.9	14 964.6	32 491.2	17 460.1	15 031.2
R1	Northern Midlands and Mountains	5 505.9	2 842.6	2 663.3	5 391.7	2 803.7	2 588.0	5 404.4	2 819.4	2 585.0	5 535.6	2 895.3	2 640.3
R2	Red River Delta (*)	5 366.4	2 747.5	2 618.9	5 176.6	2 670.2	2 506.4	5 237.6	2 686.2	2 551.5	5 332.0	2 773.8	2 558.1
R3	North and South Central Coast	7 309.2	3 892.2	3 417.0	7 294.6	3 834.2	3 460.4	7 188.6	3 803.0	3 385.6	7 360.9	3 917.5	3 443.5
R4	Central Highlands	2 063.3	1 106.6	956.7	2 013.3	1 090.8	922.5	2 055.3	1 112.8	942.5	2 085.8	1 117.3	968.5
R5	Southeast (*)	2 583.0	1 422.9	1 160.1	2 518.2	1 406.9	1 111.3	2 593.4	1 432.2	1 161.2	2 601.7	1 445.8	1 155.8
R6	Mekong River Delta	7 111.1	3 982.7	3 128.5	7 057.9	4 002.7	3 055.2	7 006.8	3 973.6	3 033.2	6 929.0	3 962.5	2 966.5
R7	Ha noi City	1 945.7	1 007.1	938.6	2 025.5	1 058.7	966.8	1 997.9	1 037.9	960.1	1 997.5	1 039.0	958.5
R8	Ho Chi Minh City	678.9	330.8	348.1	658.9	328.0	330.9	666.4	320.8	345.6	648.7	308.8	339.9

Note: (*) Red River Delta excludes Hanoi City and Southeast excludes Ho Chi Minh City.

Table 3

LABOUR FORCE AGED 15 AND OVER BY SEX, URBAN/RURAL RESIDENCE
AND LEVEL OF TECHNIQUE AND QUALIFICATION IN FIRST 9 MONTHS OF 2012

Unit: Thousand persons

No	Level of technique and qualification	Quarter 4 in 2011 (Timepoint of 1/1/2012)			Quarter 1 in 2012 (Timepoint of 1/4/2012)			Quarter 2 in 2012 (Timepoint of 1/7/2012)			Quarter 3 in 2012 (Timepoint of 1/10/2012)		
		Total	Male	Female	Total	Male	Female	Total	Male	Female	Total	Male	Female
TOTAL		52 538.4	26 942.3	25 596.1	51 978.4	26 700.9	25 277.5	52 581.3	26 980.5	25 600.7	53 098.5	27 312.5	25 785.9
1	No technique and qualification	44 193.0	22 172.2	22 020.8	43 224.2	21 699.4	21 524.8	43 811.8	21 931.5	21 880.3	44 153.7	22 162.9	21 990.8
2	Vocation training	2 140.5	1 656.2	484.3	2 374.3	1 848.9	525.4	2 293.1	1 792.4	500.8	2 503.1	1 937.0	566.1
3	Secondary vocation school	1 928.4	889.6	1 038.8	1 940.5	871.1	1 069.3	1 909.5	891.3	1 018.2	1 922.4	899.7	1 022.7
4	College	955.4	351.6	603.8	1 035.5	378.1	657.4	1 066.5	405.1	661.3	1 020.2	396.0	624.2
5	University and over	3 244.2	1 833.5	1 410.7	3 313.6	1 858.5	1 455.1	3 405.1	1 910.5	1 494.6	3 425.7	1 876.1	1 549.7
6	Not stated	76.9	39.3	37.6	90.3	44.9	45.4	95.3	49.7	45.6	73.3	40.9	32.4
URBAN		15 713.8	8 153.9	7 560.0	15 773.4	8 097.4	7 675.9	16 037.9	8 264.4	7 773.5	16 154.1	8 343.4	7 810.7
1	No technique and qualification	10 830.8	5 395.5	5 435.3	10 789.7	5 274.7	5 515.0	10 976.0	5 414.5	5 561.5	11 008.8	5 448.5	5 560.2
2	Vocation training	1 086.3	828.1	258.2	1 133.3	874.9	258.4	1 093.0	840.9	252.1	1 244.9	928.6	316.3
3	Secondary vocation school	907.6	388.1	519.5	904.7	395.1	509.6	924.7	409.7	515.0	888.7	382.5	506.2
4	College	455.8	170.6	285.3	451.8	152.0	299.8	492.3	180.8	311.5	472.7	187.0	285.8
5	University and over	2 419.1	1 363.3	1 055.8	2 474.4	1 390.9	1 083.6	2 519.8	1 400.6	1 119.2	2 518.2	1 383.1	1 135.1
6	Not stated	14.2	8.3	5.9	19.4	9.8	9.6	32.1	18.0	14.1	20.8	13.7	7.1

Table 3 (Continued)

Unit: Thousand persons

No	Level of technique and qualification	Quarter 4 in 2011 (Timepoint of 1/1/2012)			Quarter 1 in 2012 (Timepoint of 1/4/2012)			Quarter 2 in 2012 (Timepoint of 1/7/2012)			Quarter 3 in 2012 (Timepoint of 1/10/2012)		
		Total	Male	Female	Total	Male	Female	Total	Male	Female	Total	Male	Female
RURAL													
1	No technique and qualification	33 362.1	16 776.6	16 585.5	32 434.5	16 424.6	16 009.9	32 835.8	16 517.0	16 318.7	33 144.9	16 714.4	16 430.6
2	Vocation training	1 054.2	828.1	226.1	1 241.0	974.0	267.0	1 200.1	951.5	248.6	1 258.2	1 008.3	249.8
3	Secondary vocation school	1 020.8	501.5	519.3	1 035.7	476.0	559.7	984.8	481.6	503.2	1 033.7	517.2	516.5
4	College	499.6	181.0	318.6	583.7	226.0	357.7	574.1	224.4	349.8	547.5	209.0	338.4
5	University and over	825.1	470.2	354.9	839.2	467.7	371.5	885.3	510.0	375.3	907.5	492.9	414.6
6	Not stated	62.7	31.0	31.7	70.9	35.1	35.8	63.2	31.7	31.5	52.5	27.2	25.3

Table 4

**LABOUR FORCE IN THE WORKING AGE BY SEX, URBAN/RURAL RESIDENCE
AND LEVEL OF TECHNIQUE AND QUALIFICATION IN FIRST 9 MONTHS OF 2012**

Unit: Thousand persons

No	Level of technique and qualification	Quarter 4 in 2011 (Timepoint of 1/1/2012)			Quarter 1 in 2012 (Timepoint of 1/4/2012)			Quarter 2 in 2012 (Timepoint of 1/7/2012)			Quarter 3 in 2012 (Timepoint of 1/10/2012)		
		Total	Male	Female	Total	Male	Female	Total	Male	Female	Total	Male	Female
TOTAL		47 122.3	25 096.5	22 025.8	46 739.2	24 906.8	21 832.5	46 947.4	25 020.7	21 926.7	47 411.4	25 378.0	22 033.4
1	No technique and qualification	39 202.1	20 537.4	18 664.7	38 420.3	20 125.1	18 295.1	38 638.0	20 218.0	18 419.9	38 906.2	20 454.7	18 451.4
2	Vocation training	2 034.2	1 600.8	433.4	2 261.2	1 778.5	482.7	2 159.0	1 709.6	449.4	2 375.3	1 862.0	513.3
3	Secondary vocation school	1 762.9	810.3	952.6	1 761.0	796.8	964.2	1 741.2	817.6	923.6	1 747.9	823.1	924.8
4	College	912.8	338.2	574.6	991.6	361.7	629.8	1 029.1	388.4	640.7	974.8	379.2	595.6
5	University and over	3 146.7	1 775.0	1 371.7	3 220.7	1 800.4	1 420.3	3 294.9	1 840.1	1 454.7	3 340.3	1 821.4	1 519.0
6	Not stated	63.7	34.8	28.9	84.4	44.2	40.2	85.3	46.9	38.4	67.0	37.6	29.4
URBAN		14 558.7	7 764.1	6 794.6	14 602.6	7 711.6	6 891.0	14 796.9	7 834.8	6 962.0	14 920.2	7 917.9	7 002.3
1	No technique and qualification	9 871.1	5 097.0	4 774.1	9 804.7	4 973.4	4 831.4	9 944.0	5 084.3	4 859.7	9 970.6	5 112.7	4 857.9
2	Vocation training	1 042.5	806.7	235.8	1 082.6	849.0	233.6	1 039.1	814.0	225.1	1 192.1	901.9	290.2
3	Secondary vocation school	845.1	363.9	481.2	848.2	375.4	472.8	862.9	387.9	475.0	823.9	360.7	463.2
4	College	443.6	167.1	276.5	437.9	149.1	288.8	478.0	176.2	301.9	454.5	180.8	273.7
5	University and over	2 342.4	1 321.1	1 021.4	2 410.7	1 355.1	1 055.6	2 443.3	1 355.4	1 088.0	2 459.0	1 348.6	1 110.4
6	Not stated	14.0	8.3	5.7	18.3	9.7	8.7	29.5	17.1	12.4	20.1	13.3	6.9

Table 4 (Continued)

Unit: Thousand persons

No	Level of technique and qualification	Quarter 4 in 2011 (Timepoint of 1/1/2012)			Quarter 1 in 2012 (Timepoint of 1/4/2012)			Quarter 2 in 2012 (Timepoint of 1/7/2012)			Quarter 3 in 2012 (Timepoint of 1/10/2012)		
		Total	Male	Female	Total	Male	Female	Total	Male	Female	Total	Male	Female
RURAL													
1	No technique and qualification	29 331.0	15 440.4	13 890.6	28 615.5	15 151.8	13 463.8	28 694.0	15 133.7	13 560.2	28 935.6	15 342.0	13 593.5
2	Vocation training	991.7	794.1	197.6	1 178.6	929.5	249.1	1 119.9	895.7	224.3	1 183.2	960.1	223.1
3	Secondary vocation school	917.9	446.4	471.4	912.8	421.4	491.4	878.2	429.7	448.6	924.0	462.4	461.6
4	College	469.2	171.1	298.1	553.6	212.6	341.0	551.0	212.2	338.8	520.3	198.5	321.9
5	University and over	804.3	453.9	350.3	810.0	445.3	364.7	851.6	484.8	366.8	881.3	472.8	408.6
6	Not stated	49.6	26.5	23.1	66.1	34.5	31.5	55.8	29.8	26.0	46.8	24.3	22.5

Table 5

**EMPLOYED POPULATION AGED 15 AND OVER BY SEX, URBAN/RURAL RESIDENCE
AND SOCIO-ECONOMIC REGION IN FIRST 9 MONTHS OF 2012**

Unit: Thousand persons

No	Socio-economic region	Quarter 4 in 2011 (Timepoint of 1/1/2012)			Quarter 1 in 2012 (Timepoint of 1/4/2012)			Quarter 2 in 2012 (Timepoint of 1/7/2012)			Quarter 3 in 2012 (Timepoint of 1/10/2012)		
		Total	Male	Female	Total	Male	Female	Total	Male	Female	Total	Male	Female
TOTAL		51 685.4	26 582.9	25 102.5	50 997.8	26 234.4	24 763.4	51 699.0	26 595.5	25 103.5	52 114.5	26 873.2	25 241.3
R1	Northern Midlands and Mountains	7 163.4	3 554.2	3 609.2	7 066.2	3 522.3	3 543.9	7 177.1	3 569.9	3 607.2	7 318.1	3 657.1	3 661.0
R2	Red River Delta (*)	8 110.9	4 005.2	4 105.8	7 771.8	3 843.9	3 928.0	7 882.6	3 886.9	3 995.7	8 058.3	3 966.8	4 091.5
R3	North and South Central Coast	11 155.6	5 645.8	5 509.7	11 019.2	5 510.9	5 508.4	11 159.8	5 632.9	5 526.9	11 231.6	5 682.7	5 548.9
R4	Central Highlands	3 104.9	1 609.3	1 495.6	3 080.5	1 604.3	1 476.2	3 107.9	1 625.6	1 482.3	3 109.3	1 622.1	1 487.2
R5	Southeast (*)	4 475.1	2 351.5	2 123.5	4 377.2	2 300.4	2 076.8	4 518.8	2 367.8	2 151.0	4 540.5	2 368.0	2 172.5
R6	Mekong River Delta	10 166.4	5 492.5	4 673.9	10 141.9	5 543.7	4 598.2	10 261.7	5 581.2	4 680.5	10 235.3	5 610.2	4 625.1
R7	Ha noi City	3 587.5	1 810.4	1 777.1	3 614.7	1 816.3	1 798.4	3 607.8	1 818.3	1 789.4	3 648.3	1 837.1	1 811.2
R8	Ho Chi Minh City	3 921.5	2 114.0	1 807.6	3 926.4	2 092.8	1 833.5	3 983.4	2 112.9	1 870.5	3 973.0	2 129.0	1 844.0
URBAN		15 273.1	7 957.0	7 316.1	15 263.0	7 846.1	7 416.9	15 574.3	8 046.2	7 528.2	15 657.7	8 107.6	7 550.1
R1	Northern Midlands and Mountains	1 118.1	544.0	574.1	1 138.0	554.1	583.9	1 163.5	562.4	601.1	1 177.9	566.5	611.4
R2	Red River Delta (*)	1 809.4	946.2	863.2	1 758.0	905.5	852.5	1 796.6	929.0	867.6	1 822.0	948.2	873.9
R3	North and South Central Coast	2 783.8	1 409.2	1 374.5	2 764.9	1 375.5	1 389.4	2 862.5	1 448.2	1 414.3	2 859.1	1 445.6	1 413.5
R4	Central Highlands	881.5	441.9	439.5	882.6	447.4	435.2	884.2	450.2	433.9	881.4	447.4	434.0
R5	Southeast (*)	1 687.7	853.1	834.5	1 671.1	827.3	843.8	1 712.9	862.5	850.4	1 736.1	855.0	881.2
R6	Mekong River Delta	2 360.2	1 246.3	1 113.9	2 401.7	1 256.3	1 145.4	2 454.9	1 280.8	1 174.1	2 451.9	1 284.5	1 167.3
R7	Ha noi City	1 412.9	739.5	673.4	1 394.4	715.1	679.2	1 399.4	719.0	680.4	1 422.3	738.5	683.7
R8	Ho Chi Minh City	3 219.5	1 776.6	1 442.9	3 252.4	1 764.9	1 487.5	3 300.4	1 794.1	1 506.3	3 307.0	1 821.9	1 485.1

Table 5 (Continued)

Unit: Thousand persons

No	Socio-economic region	Quarter 4 in 2011 (Timepoint of 1/1/2012)			Quarter 1 in 2012 (Timepoint of 1/4/2012)			Quarter 2 in 2012 (Timepoint of 1/7/2012)			Quarter 3 in 2012 (Timepoint of 1/10/2012)		
		Total	Male	Female	Total	Male	Female	Total	Male	Female	Total	Male	Female
RURAL		36 412.3	18 625.9	17 786.4	35 734.9	18 388.3	17 346.6	36 124.7	18 549.4	17 575.3	36 456.8	18 765.5	17 691.2
R1	Northern Midlands and Mountains	6 045.2	3 010.1	3 035.1	5 928.2	2 968.1	2 960.1	6 013.6	3 007.6	3 006.1	6 140.2	3 090.6	3 049.6
R2	Red River Delta (*)	6 301.5	3 058.9	3 242.6	6 013.9	2 938.4	3 075.5	6 086.0	2 957.9	3 128.1	6 236.3	3 018.6	3 217.6
R3	North and South Central Coast	8 371.8	4 236.6	4 135.2	8 254.4	4 135.4	4 119.0	8 297.3	4 184.6	4 112.7	8 372.5	4 237.1	4 135.4
R4	Central Highlands	2 223.5	1 167.4	1 056.1	2 197.9	1 156.9	1 041.0	2 223.7	1 175.4	1 048.4	2 227.9	1 174.7	1 053.2
R5	Southeast (*)	2 787.4	1 498.4	1 289.0	2 706.1	1 473.1	1 233.0	2 805.9	1 505.3	1 300.6	2 804.3	1 513.0	1 291.3
R6	Mekong River Delta	7 806.2	4 246.2	3 560.0	7 740.2	4 287.4	3 452.8	7 806.8	4 300.4	3 506.4	7 783.4	4 325.7	3 457.7
R7	Ha noi City	2 174.7	1 070.9	1 103.8	2 220.3	1 101.1	1 119.2	2 208.4	1 099.3	1 109.0	2 226.1	1 098.6	1 127.5
R8	Ho Chi Minh City	702.0	337.4	364.7	674.0	327.9	346.1	683.0	318.8	364.2	666.0	307.2	358.8

Note: (*) Red River Delta excludes Hanoi City and Southeast excludes Ho Chi Minh City.

Table 6

**EMPLOYED POPULATION IN THE WORKING AGE BY SEX, URBAN/RURAL RESIDENCE
AND SOCIO-ECONOMIC REGION IN FIRST 9 MONTHS OF 2012**

Unit: Thousand persons

No	Socio-economic region	Quarter 4 in 2011 (Timepoint of 1/1/2012)			Quarter 1 in 2012 (Timepoint of 1/4/2012)			Quarter 2 in 2012 (Timepoint of 1/7/2012)			Quarter 3 in 2012 (Timepoint of 1/10/2012)		
		Total	Male	Female	Total	Male	Female	Total	Male	Female	Total	Male	Female
TOTAL		46 275.7	24 739.3	21 536.4	45 765.1	24 442.6	21 322.6	46 070.3	24 636.4	21 434.0	46 435.8	24 941.6	21 494.1
R1	Northern Midlands and Mountains	6 509.5	3 348.9	3 160.6	6 399.6	3 309.9	3 089.7	6 423.9	3 333.2	3 090.7	6 571.4	3 415.4	3 156.0
R2	Red River Delta (*)	6 968.5	3 620.7	3 347.8	6 706.9	3 486.7	3 220.2	6 816.6	3 529.5	3 287.1	6 926.2	3 628.8	3 297.4
R3	North and South Central Coast	9 724.0	5 164.0	4 559.9	9 683.2	5 058.5	4 624.8	9 660.0	5 103.2	4 556.8	9 786.2	5 205.7	4 580.5
R4	Central Highlands	2 851.0	1 519.7	1 331.4	2 800.9	1 503.8	1 297.0	2 846.7	1 529.9	1 316.8	2 868.1	1 529.2	1 338.9
R5	Southeast (*)	4 154.0	2 232.6	1 921.4	4 064.0	2 179.3	1 884.7	4 177.5	2 243.6	1 934.0	4 219.6	2 256.6	1 963.0
R6	Mekong River Delta	9 107.2	5 104.0	4 003.2	9 093.1	5 147.7	3 945.5	9 099.0	5 141.6	3 957.4	9 017.9	5 129.8	3 888.1
R7	Ha noi City	3 256.0	1 708.6	1 547.4	3 307.0	1 732.9	1 574.1	3 287.5	1 723.6	1 563.9	3 296.9	1 733.7	1 563.1
R8	Ho Chi Minh City	3 705.6	2 040.9	1 664.8	3 710.4	2 023.9	1 686.5	3 759.2	2 031.8	1 727.5	3 749.5	2 042.4	1 707.0
URBAN		14 122.7	7 568.7	6 554.0	14 096.9	7 462.5	6 634.4	14 335.4	7 617.3	6 718.1	14 426.7	7 683.2	6 743.4
R1	Northern Midlands and Mountains	1 019.5	512.6	506.9	1 033.6	522.3	511.3	1 042.9	525.5	517.4	1 058.6	530.3	528.3
R2	Red River Delta (*)	1 652.7	893.2	759.4	1 601.5	856.9	744.6	1 641.3	881.6	759.7	1 657.1	895.5	761.6
R3	North and South Central Coast	2 518.5	1 322.6	1 196.0	2 500.7	1 284.3	1 216.5	2 567.4	1 343.4	1 224.0	2 565.1	1 348.9	1 216.2
R4	Central Highlands	806.1	417.0	389.0	814.6	424.3	390.2	814.6	425.7	388.9	816.2	425.0	391.2
R5	Southeast (*)	1 601.3	823.0	778.3	1 592.2	796.4	795.8	1 629.3	830.3	799.0	1 654.7	827.2	827.5
R6	Mekong River Delta	2 150.9	1 174.3	976.6	2 178.6	1 183.5	995.0	2 223.2	1 198.5	1 024.7	2 229.9	1 203.7	1 026.1
R7	Ha noi City	1 327.8	710.4	617.4	1 306.5	689.2	617.3	1 308.4	691.6	616.8	1 329.0	709.4	619.6
R8	Ho Chi Minh City	3 045.9	1 715.5	1 330.3	3 069.4	1 705.6	1 363.8	3 108.3	1 720.6	1 387.6	3 116.1	1 743.2	1 372.9

Table 6 (Continued)

Unit: Thousand persons

No	Socio-economic region	Quarter 4 in 2011 (Timepoint of 1/1/2012)			Quarter 1 in 2012 (Timepoint of 1/4/2012)			Quarter 2 in 2012 (Timepoint of 1/7/2012)			Quarter 3 in 2012 (Timepoint of 1/10/2012)		
		Total	Male	Female	Total	Male	Female	Total	Male	Female	Total	Male	Female
RURAL		32 153.0	17 170.6	14 982.4	31 668.2	16 980.0	14 688.2	31 735.0	17 019.1	14 715.9	32 009.1	17 258.4	14 750.7
R1	Northern Midlands and Mountains	5 489.9	2 836.2	2 653.7	5 366.0	2 787.5	2 578.5	5 381.0	2 807.7	2 573.3	5 512.8	2 885.1	2 627.7
R2	Red River Delta (*)	5 315.8	2 727.4	2 588.4	5 105.4	2 629.8	2 475.6	5 175.3	2 647.9	2 527.4	5 269.1	2 733.3	2 535.8
R3	North and South Central Coast	7 205.4	3 841.5	3 363.9	7 182.5	3 774.2	3 408.3	7 092.6	3 759.8	3 332.8	7 221.1	3 856.8	3 364.3
R4	Central Highlands	2 045.0	1 102.6	942.3	1 986.3	1 079.5	906.8	2 032.0	1 104.2	927.8	2 051.9	1 104.2	947.7
R5	Southeast (*)	2 552.7	1 409.6	1 143.1	2 471.9	1 382.9	1 088.9	2 548.2	1 413.3	1 134.9	2 564.9	1 429.4	1 135.5
R6	Mekong River Delta	6 956.3	3 929.7	3 026.6	6 914.6	3 964.1	2 950.4	6 875.8	3 943.1	2 932.7	6 788.0	3 926.0	2 862.0
R7	Ha noi City	1 928.2	998.2	930.0	2 000.5	1 043.7	956.9	1 979.1	1 032.0	947.1	1 967.9	1 024.3	943.6
R8	Ho Chi Minh City	659.8	325.3	334.4	641.0	318.3	322.7	650.9	311.1	339.8	633.3	299.2	334.1

Note: (*) Red River Delta excludes Hanoi City and Southeast excludes Ho Chi Minh City.

Table 7

**EMPLOYED POPULATION AGED 15 AND OVER BY SEX, URBAN/RURAL RESIDENCE
AND LEVEL OF TECHNIQUE AND QUALIFICATION IN FIRST 9 MONTHS OF 2012**

Unit: Thousand persons

No	Level of technique and qualification	Quarter 4 in 2011 (Timepoint of 1/1/2012)			Quarter 1 in 2012 (Timepoint of 1/4/2012)			Quarter 2 in 2012 (Timepoint of 1/7/2012)			Quarter 3 in 2012 (Timepoint of 1/10/2012)		
		Total	Male	Female	Total	Male	Female	Total	Male	Female	Total	Male	Female
TOTAL		51 685.4	26 582.9	25 102.5	50 997.8	26 234.4	24 763.4	51 699.0	26 595.5	25 103.5	52 114.5	26 873.2	25 241.3
1	No technique and qualification	43 560.8	21 915.7	21 645.1	42 507.9	21 375.5	21 132.4	43 180.8	21 670.0	21 510.8	43 475.6	21 871.1	21 604.6
2	Vocation training	2 086.9	1 616.8	470.1	2 312.6	1 798.4	514.2	2 236.9	1 750.1	486.8	2 434.0	1 888.8	545.2
3	Secondary vocation school	1 881.5	872.7	1 008.8	1 874.3	845.1	1 029.1	1 849.8	869.0	980.9	1 856.9	873.9	983.0
4	College	913.2	337.5	575.8	998.2	362.2	636.0	1 009.0	380.7	628.3	964.8	375.7	589.0
5	University and over	3 166.7	1 800.9	1 365.8	3 215.7	1 808.3	1 407.4	3 331.1	1 878.0	1 453.1	3 314.7	1 822.8	1 491.9
6	Not stated	76.2	39.3	36.9	89.2	44.9	44.3	91.5	47.8	43.6	68.5	40.9	27.6
URBAN		15 273.1	7 957.0	7 316.1	15 263.0	7 846.1	7 416.9	15 574.3	8 046.2	7 528.2	15 657.7	8 107.6	7 550.1
1	No technique and qualification	10 525.3	5 262.3	5 263.0	10 425.1	5 098.2	5 326.9	10 659.9	5 266.7	5 393.2	10 691.3	5 303.4	5 387.9
2	Vocation training	1 053.7	803.9	249.8	1 099.7	848.2	251.5	1 065.6	821.6	244.1	1 204.5	899.9	304.6
3	Secondary vocation school	879.5	377.7	501.8	874.0	387.3	486.8	892.0	399.2	492.8	851.2	366.8	484.3
4	College	435.1	164.1	271.1	432.4	144.8	287.6	462.9	168.2	294.7	444.2	175.2	269.0
5	University and over	2 366.0	1 340.8	1 025.2	2 412.3	1 357.9	1 054.5	2 463.3	1 373.7	1 089.6	2 445.6	1 348.6	1 097.1
6	Not stated	13.5	8.3	5.2	19.4	9.8	9.6	30.5	16.7	13.8	20.8	13.7	7.1

Table 7 (Continued)

Unit: Thousand persons

No	Level of technique and qualification	Quarter 4 in 2011 (Timepoint of 1/1/2012)			Quarter 1 in 2012 (Timepoint of 1/4/2012)			Quarter 2 in 2012 (Timepoint of 1/7/2012)			Quarter 3 in 2012 (Timepoint of 1/10/2012)		
		Total	Male	Female	Total	Male	Female	Total	Male	Female	Total	Male	Female
RURAL													
1	No technique and qualification	36 412.3	18 625.9	17 786.4	35 734.9	18 388.3	17 346.6	36 124.7	18 549.4	17 575.3	36 456.8	18 765.5	17 691.2
2	Vocation training	1 033.3	812.9	220.4	1 212.9	950.2	262.7	1 171.2	928.5	242.7	1 229.4	988.8	240.6
3	Secondary vocation school	1 002.1	495.0	507.0	1 000.2	457.9	542.4	957.9	469.8	488.1	1 005.7	507.1	498.7
4	College	478.1	173.4	304.7	565.8	217.4	348.4	546.1	212.5	333.6	520.5	200.5	320.0
5	University and over	800.7	460.1	340.6	803.3	450.4	352.9	867.7	504.2	363.5	869.0	474.2	394.8
6	Not stated	62.7	31.0	31.7	69.8	35.1	34.7	60.9	31.1	29.8	47.7	27.2	20.5

Table 8

**EMPLOYED POPULATION IN THE WORKING AGE BY SEX, URBAN/RURAL RESIDENCE
AND LEVEL OF TECHNIQUE AND QUALIFICATION IN FIRST 9 MONTHS OF 2012**

Unit: Thousand persons

No	Level of technique and qualification	Quarter 4 in 2011 (Timepoint of 1/1/2012)			Quarter 1 in 2012 (Timepoint of 1/4/2012)			Quarter 2 in 2012 (Timepoint of 1/7/2012)			Quarter 3 in 2012 (Timepoint of 1/10/2012)		
		Total	Male	Female	Total	Male	Female	Total	Male	Female	Total	Male	Female
TOTAL		46 275.7	24 739.3	21 536.4	45 765.1	24 442.6	21 322.6	46 070.3	24 636.4	21 434.0	46 435.8	24 941.6	21 494.1
1	No technique and qualification	38 575.8	20 282.9	18 293.0	37 710.1	19 803.3	17 906.8	38 009.4	19 956.7	18 052.7	38 234.2	20 165.0	18 069.2
2	Vocation training	1 980.8	1 561.4	419.4	2 199.7	1 728.1	471.6	2 102.8	1 667.3	435.5	2 306.6	1 813.8	492.8
3	Secondary vocation school	1 716.1	793.4	922.6	1 694.9	770.8	924.1	1 681.8	795.3	886.6	1 682.6	797.3	885.3
4	College	870.8	324.3	546.5	954.2	345.8	608.4	971.6	364.0	607.6	920.1	359.0	561.1
5	University and over	3 069.2	1 742.4	1 326.8	3 122.9	1 750.3	1 372.6	3 221.5	1 808.0	1 413.5	3 230.2	1 769.0	1 461.2
6	Not stated	62.9	34.8	28.1	83.3	44.2	39.1	83.2	45.1	38.1	62.1	37.6	24.5
URBAN		14 122.7	7 568.7	6 554.0	14 096.9	7 462.5	6 634.4	14 335.4	7 617.3	6 718.1	14 426.7	7 683.2	6 743.4
1	No technique and qualification	9 569.9	4 965.0	4 604.9	9 444.5	4 798.9	4 645.6	9 629.0	4 936.7	4 692.2	9 655.3	4 968.6	4 686.7
2	Vocation training	1 010.0	782.4	227.6	1 049.2	822.4	226.9	1 011.8	794.7	217.1	1 152.1	873.2	279.0
3	Secondary vocation school	816.9	353.5	463.5	817.6	367.5	450.1	830.5	377.4	453.1	786.6	345.1	441.5
4	College	423.1	160.9	262.2	418.5	141.9	276.6	448.7	163.6	285.0	425.9	169.0	257.0
5	University and over	2 289.4	1 298.6	990.8	2 348.7	1 322.2	1 026.5	2 387.5	1 328.9	1 058.6	2 386.6	1 314.2	1 072.4
6	Not stated	13.3	8.3	5.0	18.3	9.7	8.7	27.9	15.9	12.0	20.1	13.3	6.9

Table 8 (Continued)

Unit: Thousand persons

No	Level of technique and qualification	Quarter 4 in 2011 (Timepoint of 1/1/2012)			Quarter 1 in 2012 (Timepoint of 1/4/2012)			Quarter 2 in 2012 (Timepoint of 1/7/2012)			Quarter 3 in 2012 (Timepoint of 1/10/2012)		
		Total	Male	Female	Total	Male	Female	Total	Male	Female	Total	Male	Female
RURAL													
1	No technique and qualification	32 153.0	17 170.6	14 982.4	31 668.2	16 980.0	14 688.2	31 735.0	17 019.1	14 715.9	32 009.1	17 258.4	14 750.7
2	Vocation training	970.8	779.0	191.8	1 150.5	905.7	244.7	1 091.0	872.6	218.4	1 154.5	940.6	213.9
3	Secondary vocation school	899.1	439.9	459.2	877.3	403.3	474.0	851.3	417.9	433.4	896.0	452.2	443.8
4	College	447.7	163.5	284.3	535.7	204.0	331.8	522.9	200.3	322.6	494.2	190.0	304.2
5	University and over	779.8	443.8	336.0	774.2	428.1	346.1	834.0	479.0	354.9	843.7	454.9	388.8
6	Not stated	49.6	26.5	23.1	65.0	34.5	30.4	55.3	29.3	26.0	42.0	24.3	17.7

Table 9

EMPLOYED POPULATION AGED 15 AND OVER BY SEX, URBAN/RURAL RESIDENCE,
ECONOMIC SECTOR AND INDUSTRIAL SECTOR IN FIRST 9 MONTHS OF 2012

Unit: Thousand persons

No	Economic sector/Industrial sector	Quarter 4 in 2011 (Timepoint of 1/1/2012)			Quarter 1 in 2012 (Timepoint of 1/4/2012)			Quarter 2 in 2012 (Timepoint of 1/7/2012)			Quarter 3 in 2012 (Timepoint of 1/10/2012)		
		Total	Male	Female	Total	Male	Female	Total	Male	Female	Total	Male	Female
TOTAL		51 685.4	26 582.9	25 102.5	50 997.8	26 234.4	24 763.4	51 699.0	26 595.5	25 103.5	52 114.5	26 873.2	25 241.3
<i>Economic sector</i>													
1	State	5 325.8	2 857.8	2 468.0	5 432.1	2 938.0	2 494.1	5 379.8	2 922.1	2 457.7	5 273.2	2 853.4	2 419.9
2	Non-state	44 362.0	22 907.9	21 454.0	43 710.0	22 609.1	21 100.9	44 418.6	22 950.9	21 467.7	45 057.3	23 381.3	21 676.0
3	Foreign invested fund	1 770.3	687.1	1 083.2	1 716.0	619.6	1 096.3	1 655.5	604.7	1 050.7	1 663.7	573.6	1 090.2
4	Not stated	227.3	130.1	97.3	139.8	67.7	72.1	245.1	117.7	127.4	120.2	64.9	55.3
<i>Industrial sector</i>													
1	Agriculture, forestry and fishing	24 797.8	12 102.8	12 695.0	24 320.2	12 104.3	12 215.9	24 359.0	12 010.0	12 349.0	24 950.8	12 250.1	12 700.7
2	Industry and construction	11 088.0	6 868.2	4 219.8	10 502.5	6 442.2	4 060.3	10 972.8	6 740.9	4 231.9	10 973.3	6 745.6	4 227.7
3	Services	15 795.6	7 609.8	8 185.8	16 146.3	7 674.1	8 472.3	16 347.6	7 838.8	8 508.8	16 175.5	7 871.1	8 304.5
4	Not stated	4.0	2.1	1.9	28.9	13.9	15.0	19.6	5.8	13.8	14.8	6.5	8.4

Table 9 (Continued)

Unit: Thousand persons

No	Economic sector/Industrial sector	Quarter 4 in 2011 (Timepoint of 1/1/2012)			Quarter 1 in 2012 (Timepoint of 1/4/2012)			Quarter 2 in 2012 (Timepoint of 1/7/2012)			Quarter 3 in 2012 (Timepoint of 1/10/2012)		
		Total	Male	Female	Total	Male	Female	Total	Male	Female	Total	Male	Female
URBAN													
Economic sector													
1	State	3 093.0	1 645.2	1 447.7	3 077.5	1 660.1	1 417.4	3 095.8	1 677.3	1 418.5	3 062.7	1 664.3	1 398.4
2	Non-state	11 251.1	5 935.1	5 316.0	11 270.3	5 830.2	5 440.0	11 521.2	5 994.7	5 526.4	11 648.4	6 090.0	5 558.4
3	Foreign invested fund	868.4	345.0	523.4	880.3	336.5	543.8	898.9	343.3	555.5	902.7	325.9	576.8
4	Not stated	60.6	31.6	29.0	35.0	19.4	15.6	58.5	30.8	27.7	43.9	27.4	16.5
Industrial sector													
1	Agriculture, forestry and fishing	2 305.3	1 208.9	1 096.3	2 305.6	1 219.0	1 086.6	2 340.7	1 239.0	1 101.7	2 378.8	1 250.7	1 128.0
2	Industry and construction	4 251.8	2 540.1	1 711.8	4 162.5	2 476.4	1 686.1	4 298.2	2 545.1	1 753.1	4 323.6	2 542.1	1 781.5
3	Services	8 715.1	4 207.6	4 507.5	8 791.0	4 148.5	4 642.5	8 932.7	4 260.8	4 671.9	8 950.0	4 311.1	4 638.9
4	Not stated	0.8	0.3	0.5	3.9	2.2	1.7	2.7	1.2	1.5	5.4	3.7	1.7
RURAL													
Economic sector													
1	State	2 232.8	1 212.6	1 020.3	2 354.6	1 277.9	1 076.7	2 284.1	1 244.9	1 039.2	2 210.6	1 189.1	1 021.5
2	Non-state	33 110.9	16 972.8	16 138.1	32 439.7	16 778.8	15 660.9	32 897.4	16 956.2	15 941.2	33 408.9	17 291.3	16 117.6
3	Foreign invested fund	901.9	342.1	559.8	835.7	283.2	552.5	756.6	261.4	495.2	761.0	247.7	513.4
4	Not stated	166.7	98.4	68.3	104.8	48.4	56.5	186.6	86.9	99.7	76.3	37.5	38.8
Industrial sector													
1	Agriculture, forestry and fishing	22 492.6	10 893.9	11 598.7	22 014.5	10 885.2	11 129.3	22 018.3	10 771.0	11 247.3	22 572.0	10 999.3	11 572.7
2	Industry and construction	6 836.1	4 328.1	2 508.0	6 339.9	3 965.8	2 374.2	6 674.6	4 195.8	2 478.9	6 649.8	4 203.5	2 446.3
3	Services	7 080.5	3 402.2	3 678.3	7 355.4	3 525.6	3 829.8	7 414.9	3 578.0	3 836.9	7 225.5	3 560.0	3 665.6
4	Not stated	3.1	1.7	1.4	25.0	11.7	13.3	16.9	4.5	12.3	9.5	2.7	6.7

Table 10

**EMPLOYED POPULATION IN THE WORKING AGE BY SEX, URBAN/RURAL RESIDENCE,
ECONOMIC SECTOR AND INDUSTRIAL SECTOR IN FIRST 9 MONTHS OF 2012**

Unit: Thousand persons

No	Economic sector/Industrial sector	Quarter 4 in 2011 (Timepoint of 1/1/2012)			Quarter 1 in 2012 (Timepoint of 1/4/2012)			Quarter 2 in 2012 (Timepoint of 1/7/2012)			Quarter 3 in 2012 (Timepoint of 1/10/2012)		
		Total	Male	Female	Total	Male	Female	Total	Male	Female	Total	Male	Female
TOTAL		46 275.7	24 739.3	21 536.4	45 765.1	24 442.6	21 322.6	46 070.3	24 636.4	21 434.0	46 435.8	24 941.6	21 494.1
<i>Economic sector</i>													
1	State	5 189.5	2 772.9	2 416.5	5 294.3	2 849.7	2 444.6	5 231.6	2 832.7	2 398.9	5 129.4	2 764.0	2 365.4
2	Non-state	39 114.7	21 159.5	17 955.2	38 631.8	20 910.7	17 721.1	38 964.3	21 089.2	17 875.1	39 536.4	21 543.7	17 992.7
3	Foreign invested fund	1 765.9	685.8	1 080.1	1 710.2	618.7	1 091.5	1 649.5	603.3	1 046.2	1 659.2	572.6	1 086.6
4	Not stated	205.6	121.0	84.6	128.8	63.5	65.4	224.9	111.2	113.8	110.8	61.3	49.4
<i>Industrial sector</i>													
1	Agriculture, forestry and fishing	20 890.7	10 755.9	10 134.8	20 589.2	10 799.3	9 789.9	20 350.4	10 595.4	9 755.0	20 893.6	10 860.8	10 032.8
2	Industry and construction	10 783.0	6 738.8	4 044.2	10 198.8	6 315.2	3 883.6	10 582.4	6 578.1	4 004.2	10 615.1	6 591.5	4 023.7
3	Services	14 598.0	7 242.5	7 355.5	14 951.4	7 315.4	7 636.0	15 118.3	7 457.2	7 661.1	14 914.0	7 483.1	7 430.9
4	Not stated	4.0	2.1	1.9	25.7	12.6	13.1	19.3	5.6	13.6	13.0	6.2	6.8

Table 10 (Continued)

Unit: Thousand persons

No	Economic sector/Industrial sector	Quarter 4 in 2011 (Timepoint of 1/1/2012)			Quarter 1 in 2012 (Timepoint of 1/4/2012)			Quarter 2 in 2012 (Timepoint of 1/7/2012)			Quarter 3 in 2012 (Timepoint of 1/10/2012)		
		Total	Male	Female	Total	Male	Female	Total	Male	Female	Total	Male	Female
URBAN													
Economic sector													
1	State	3 011.2	1 601.8	1 409.4	3 001.4	1 620.1	1 381.3	3 011.5	1 633.0	1 378.5	2 980.1	1 619.0	1 361.1
2	Non-state	10 188.0	5 592.0	4 596.0	10 188.8	5 488.5	4 700.3	10 374.5	5 613.5	4 761.0	10 505.6	5 712.7	4 793.0
3	Foreign invested fund	865.7	344.3	521.5	874.6	335.5	539.2	895.2	342.3	552.9	898.8	325.4	573.4
4	Not stated	57.7	30.6	27.1	32.1	18.5	13.7	54.2	28.5	25.7	42.0	26.1	15.9
Industrial sector													
1	Agriculture, forestry and fishing	1 922.6	1 066.0	856.7	1 923.6	1 077.1	846.5	1 922.2	1 072.0	850.3	1 966.8	1 095.3	871.5
2	Industry and construction	4 144.4	2 488.8	1 655.6	4 052.2	2 429.0	1 623.2	4 169.8	2 491.4	1 678.4	4 204.5	2 487.9	1 716.6
3	Services	8 054.8	4 013.6	4 041.2	8 118.4	3 955.0	4 163.5	8 240.9	4 052.8	4 188.1	8 250.7	4 096.5	4 154.2
4	Not stated	0.8	0.3	0.5	2.7	1.5	1.2	2.4	1.1	1.3	4.6	3.5	1.1
RURAL													
Economic sector													
1	State	2 178.2	1 171.1	1 007.1	2 293.0	1 229.6	1 063.4	2 220.2	1 199.8	1 020.4	2 149.2	1 144.9	1 004.3
2	Non-state	28 926.7	15 567.6	13 359.1	28 443.0	15 422.2	13 020.8	28 589.7	15 475.7	13 114.0	29 030.8	15 831.0	13 199.8
3	Foreign invested fund	900.2	341.5	558.7	835.5	283.2	552.3	754.3	261.0	493.4	760.4	247.2	513.1
4	Not stated	147.8	90.4	57.5	96.7	45.0	51.7	170.8	82.7	88.1	68.7	35.2	33.5
Industrial sector													
1	Agriculture, forestry and fishing	18 968.1	9 690.0	9 278.1	18 665.7	9 722.3	8 943.4	18 428.2	9 523.4	8 904.8	18 926.9	9 765.5	9 161.4
2	Industry and construction	6 638.6	4 250.0	2 388.6	6 146.6	3 886.2	2 260.3	6 412.5	4 086.7	2 325.8	6 410.6	4 103.5	2 307.1
3	Services	6 543.2	3 228.9	3 314.3	6 833.0	3 360.5	3 472.5	6 877.4	3 404.5	3 473.0	6 663.3	3 386.6	3 276.7
4	Not stated	3.1	1.7	1.4	23.0	11.1	12.0	16.9	4.5	12.3	8.4	2.7	5.6

Table 11

**AVERAGE MONTHLY INCOME OF WAGE WORKER AGED 15 AND OVER BY SEX,
URBAN/RURAL RESIDENCE AND SOCIO-ECONOMIC REGION IN FIRST 9 MONTHS OF 2012**

Unit: Thousand VND

No	Socio-economic region	Quarter 4 in 2011 (Timepoint of 1/1/2012)			Quarter 1 in 2012 (Timepoint of 1/4/2012)			Quarter 2 in 2012 (Timepoint of 1/7/2012)			Quarter 3 in 2012 (Timepoint of 1/10/2012)		
		Total	Male	Female	Total	Male	Female	Total	Male	Female	Total	Male	Female
TOTAL		3 243.9	3 425.5	2 974.8	3 904.9	4 072.8	3 666.7	3 572.7	3 763.9	3 293.3	3 766.2	3 924.2	3 532.0
R1	Northern Midlands and Mountains	3 093.0	3 088.5	3 100.2	3 296.3	3 296.0	3 296.7	3 342.7	3 335.6	3 353.9	3 689.1	3 670.0	3 718.4
R2	Red River Delta (*)	3 182.3	3 350.9	2 920.0	3 655.3	3 904.4	3 296.9	3 491.7	3 755.0	3 109.9	3 640.7	3 848.2	3 321.0
R3	North and South Central Coast	3 011.3	3 177.1	2 710.6	3 225.3	3 398.1	2 949.2	3 094.6	3 293.9	2 754.4	3 305.2	3 486.6	2 991.1
R4	Central Highlands	2 956.8	3 105.4	2 772.5	3 117.1	3 317.1	2 849.1	3 401.5	3 601.1	3 119.5	3 634.4	3 769.9	3 455.6
R5	Southeast (*)	3 435.6	3 665.5	3 154.3	4 383.5	4 610.1	4 116.2	3 687.4	3 911.7	3 410.8	4 018.2	4 236.5	3 762.2
R6	Mekong River Delta	2 526.5	2 760.0	2 162.4	2 792.3	2 994.8	2 473.6	2 757.4	2 982.9	2 391.5	2 985.9	3 188.1	2 635.9
R7	Ha noi City	3 867.5	4 065.9	3 592.4	5 183.9	5 369.7	4 933.7	4 536.6	4 698.3	4 314.6	4 720.8	4 871.8	4 520.2
R8	Ho Chi Minh City	4 122.3	4 474.3	3 676.2	5 818.1	6 120.6	5 432.8	4 799.8	5 167.4	4 343.7	4 750.8	5 028.3	4 393.6
URBAN		3 728.0	4 003.4	3 370.6	4 802.5	5 118.9	4 401.9	4 211.1	4 518.6	3 818.9	4 401.2	4 650.3	4 081.4
R1	Northern Midlands and Mountains	3 435.6	3 545.5	3 309.6	3 851.4	4 058.2	3 614.0	3 834.2	4 009.2	3 631.1	4 269.2	4 369.7	4 152.6
R2	Red River Delta (*)	3 654.9	3 926.8	3 276.1	4 478.0	4 840.7	3 966.5	4 274.4	4 643.7	3 767.8	4 348.9	4 749.9	3 800.9
R3	North and South Central Coast	3 279.6	3 557.7	2 885.5	3 771.6	4 081.3	3 373.5	3 433.1	3 711.1	3 062.6	3 700.5	3 955.8	3 351.1
R4	Central Highlands	3 282.8	3 557.1	2 962.9	3 616.0	3 903.3	3 249.4	3 550.8	3 823.0	3 184.0	4 075.1	4 242.7	3 834.2
R5	Southeast (*)	3 672.4	3 998.1	3 319.5	4 657.2	5 105.5	4 186.5	4 098.1	4 445.0	3 719.1	4 471.0	4 780.1	4 164.5
R6	Mekong River Delta	2 882.1	3 101.2	2 557.0	3 367.6	3 632.3	2 975.1	3 173.6	3 451.0	2 768.6	3 358.8	3 626.1	2 964.1
R7	Ha noi City	4 568.7	4 845.1	4 231.7	6 526.6	7 005.6	5 987.1	5 395.2	5 762.8	4 971.3	5 564.1	5 805.9	5 281.2
R8	Ho Chi Minh City	4 256.8	4 609.6	3 792.6	6 055.8	6 340.3	5 679.9	4 981.6	5 341.7	4 514.9	4 938.2	5 183.3	4 606.6

Table 11 (Continued)

Unit: Thousand VND

No	Socio-economic region	Quarter 4 in 2011 (Timepoint of 1/1/2012)			Quarter 1 in 2012 (Timepoint of 1/4/2012)			Quarter 2 in 2012 (Timepoint of 1/7/2012)			Quarter 3 in 2012 (Timepoint of 1/10/2012)		
		Total	Male	Female	Total	Male	Female	Total	Male	Female	Total	Male	Female
RURAL		2 843.9	2 993.1	2 596.6	3 157.5	3 274.5	2 974.7	3 036.0	3 191.6	2 780.4	3 219.8	3 364.4	2 976.5
R1	Northern Midlands and Mountains	2 901.5	2 880.9	2 941.1	2 987.5	2 937.0	3 073.9	3 074.1	3 032.4	3 152.2	3 341.7	3 320.7	3 379.8
R2	Red River Delta (*)	2 960.7	3 097.9	2 735.8	3 275.5	3 477.3	2 982.6	3 137.3	3 365.8	2 797.4	3 312.2	3 458.5	3 073.6
R3	North and South Central Coast	2 831.1	2 957.9	2 557.3	2 861.9	3 004.9	2 596.2	2 859.2	3 047.1	2 474.0	3 038.3	3 214.1	2 678.1
R4	Central Highlands	2 673.0	2 732.0	2 595.7	2 699.8	2 845.4	2 496.6	3 264.8	3 405.4	3 057.2	3 223.0	3 296.1	3 134.1
R5	Southeast (*)	3 228.4	3 403.1	2 990.7	4 121.8	4 183.6	4 040.2	3 298.3	3 457.4	3 078.1	3 556.5	3 762.7	3 269.0
R6	Mekong River Delta	2 364.3	2 608.7	1 974.4	2 525.1	2 708.7	2 227.8	2 552.3	2 766.0	2 186.6	2 807.0	2 995.9	2 453.2
R7	Ha noi City	3 033.7	3 243.1	2 693.9	3 682.9	3 815.2	3 464.3	3 592.8	3 696.9	3 418.8	3 734.5	3 901.8	3 475.9
R8	Ho Chi Minh City	3 452.6	3 728.6	3 160.8	4 529.4	4 793.4	4 253.7	3 833.6	4 114.2	3 557.1	3 749.8	4 070.0	3 433.7

Note: (*) Red River Delta excludes Hanoi City and Southeast excludes Ho Chi Minh City.

Table 12

**AVERAGE MONTHLY INCOME OF WAGE WORKER AGED 15 AND OVER BY SEX,
URBAN/RURAL RESIDENCE AND LEVEL OF TECHNIQUE AND QUALIFICATION IN FIRST 9 MONTHS OF 2012**

Unit: Thousand VND

No	Level of technique and qualification	Quarter 4 in 2011 (Timepoint of 1/1/2012)			Quarter 1 in 2012 (Timepoint of 1/4/2012)			Quarter 2 in 2012 (Timepoint of 1/7/2012)			Quarter 3 in 2012 (Timepoint of 1/10/2012)		
		Total	Male	Female	Total	Male	Female	Total	Male	Female	Total	Male	Female
TOTAL		3 243.9	3 425.5	2 974.8	3 904.9	4 072.8	3 666.7	3 572.7	3 763.9	3 293.3	3 766.2	3 924.2	3 532.0
1	No technique and qualification	2 772.0	2 938.7	2 497.6	3 086.5	3 200.3	2 911.2	2 946.4	3 108.8	2 686.5	3 086.5	3 233.3	2 845.1
2	Vocation training	3 730.2	3 853.7	3 315.9	4 478.4	4 666.2	3 852.5	4 074.0	4 274.5	3 337.4	4 259.1	4 407.2	3 757.0
3	Secondary vocation school	3 209.5	3 402.4	3 050.8	3 839.2	4 173.8	3 567.1	3 560.9	3 882.5	3 285.9	3 812.3	4 087.0	3 579.3
4	College	3 421.5	3 672.7	3 291.1	4 125.1	4 417.7	3 969.8	3 955.7	4 403.3	3 707.8	4 275.8	4 552.7	4 114.1
5	University and over	4 883.7	5 311.2	4 351.6	6 729.2	7 264.6	6 080.6	6 550.6	6 107.1	5 102.3	5 938.7	6 440.4	5 361.8
URBAN		3 728.0	4 003.4	3 370.6	4 802.5	5 118.9	4 401.9	4 211.1	4 518.6	3 818.9	4 401.2	4 650.3	4 081.4
1	No technique and qualification	2 995.8	3 201.4	2 714.1	3 508.4	3 677.8	3 289.3	3 271.9	3 478.7	2 998.5	3 416.2	3 585.9	3 186.4
2	Vocation training	3 893.2	4 049.7	3 383.6	5 047.7	5 225.3	4 427.9	4 459.8	4 693.2	3 637.4	4 490.6	4 677.7	3 939.8
3	Secondary vocation school	3 495.5	3 824.2	3 254.5	4 343.1	4 863.0	3 943.3	3 933.4	4 341.4	3 596.3	4 142.9	4 425.7	3 930.5
4	College	3 660.3	3 932.3	3 514.9	4 657.6	5 211.1	4 397.1	4 163.1	4 636.3	3 907.4	4 435.9	4 690.9	4 281.3
5	University and over	5 183.1	5 658.2	4 590.4	7 325.7	7 910.3	6 610.3	6 007.2	6 533.4	5 376.8	6 275.8	6 804.5	5 658.3
RURAL		2 843.9	2 993.1	2 596.6	3 157.5	3 274.5	2 974.7	3 036.0	3 191.6	2 780.4	3 219.8	3 364.4	2 976.5
1	No technique and qualification	2 644.5	2 805.1	2 350.4	2 840.5	2 951.5	2 650.5	2 756.6	2 917.6	2 467.1	2 891.8	3 048.9	2 600.8
2	Vocation training	3 548.9	3 638.8	3 236.6	3 902.9	4 089.1	3 310.1	3 678.7	3 853.3	3 008.2	3 980.4	4 104.6	3 473.4
3	Secondary vocation school	2 932.5	3 041.3	2 832.6	3 357.6	3 553.5	3 189.5	3 183.2	3 434.2	2 961.1	3 505.9	3 810.3	3 217.1
4	College	3 192.5	3 414.2	3 080.6	3 719.7	3 891.1	3 620.3	3 769.7	4 200.5	3 525.9	4 124.3	4 415.8	3 960.3
5	University and over	3 983.1	4 263.2	3 636.7	4 928.3	5 278.4	4 517.3	4 596.4	4 852.4	4 286.6	4 920.0	5 307.7	4 494.1

Table 13

AVERAGE MONTHLY INCOME OF WAGE WORKER AGED 15 AND OVER BY SEX, URBAN/RURAL RESIDENCE,
ECONOMIC SECTOR AND INDUSTRIAL SECTOR IN FIRST 9 MONTHS OF 2012

Unit: Thousand VND

No	Economic sector/Industrial sector	Quarter 4 in 2011 (Timepoint of 1/1/2012)			Quarter 1 in 2012 (Timepoint of 1/4/2012)			Quarter 2 in 2012 (Timepoint of 1/7/2012)			Quarter 3 in 2012 (Timepoint of 1/10/2012)		
		Total	Male	Female	Total	Male	Female	Total	Male	Female	Total	Male	Female
TOTAL		3 243.9	3 425.5	2 974.8	3 904.9	4 072.8	3 666.7	3 572.7	3 763.9	3 293.3	3 766.2	3 924.2	3 532.0
<i>Economic sector</i>													
1 State		3 706.0	3 931.1	3 445.3	4 772.2	5 097.2	4 389.6	4 237.6	4 533.3	3 886.4	4 525.4	4 789.4	4 214.6
2 Non-state		2 875.8	3 079.4	2 477.1	3 312.9	3 498.7	2 971.6	3 147.9	3 373.0	2 722.8	3 301.7	3 504.3	2 902.4
3 Foreign invested fund		4 048.7	4 848.9	3 541.9	4 812.1	5 545.6	4 398.6	4 218.6	4 674.6	3 957.5	4 356.1	4 835.1	4 103.7
<i>Industrial sector</i>													
1 Agriculture, forestry and fishing		2 483.0	2 704.5	2 082.5	2 618.5	2 768.6	2 363.3	2 450.0	2 672.8	2 044.9	2 521.2	2 753.2	2 084.6
2 Industry and construction		3 167.3	3 355.2	2 843.5	3 785.3	3 955.3	3 503.8	3 442.3	3 652.3	3 092.6	3 615.5	3 775.2	3 346.8
3 Services		3 528.8	3 740.6	3 276.9	4 376.8	4 629.4	4 085.6	4 000.2	4 230.4	3 722.6	4 229.8	4 443.7	3 968.3
URBAN		3 728.0	4 003.4	3 370.6	4 802.5	5 118.9	4 401.9	4 211.1	4 518.6	3 818.9	4 401.2	4 650.3	4 081.4
<i>Economic sector</i>													
1 State		4 135.6	4 512.0	3 708.5	5 549.5	6 100.6	4 904.3	4 805.9	5 265.7	4 262.7	5 073.1	5 479.4	4 589.6
2 Non-state		3 307.7	3 550.6	2 901.0	4 096.0	4 321.0	3 741.9	3 705.8	3 968.7	3 289.0	3 811.1	4 036.0	3 446.7
3 Foreign invested fund		4 237.7	4 922.7	3 787.0	5 480.9	6 220.2	5 024.8	4 536.3	4 999.9	4 249.8	4 865.8	5 319.1	4 610.2
<i>Industrial sector</i>													
1 Agriculture, forestry and fishing		2 910.4	3 248.6	2 174.5	2 708.2	2 977.5	2 083.7	2 911.5	3 205.7	2 240.0	2 940.3	3 290.7	2 147.3
2 Industry and construction		3 574.9	3 820.3	3 203.9	4 571.2	4 880.1	4 115.5	3 978.8	4 310.9	3 501.8	4 148.2	4 358.4	3 848.6
3 Services		3 898.7	4 226.6	3 531.0	5 112.7	5 511.2	4 677.8	4 472.1	4 808.4	4 092.9	4 686.0	5 005.9	4 318.9

Table 13 (Continued)

Unit: Thousand VND

No	Economic sector/Industrial sector	Quarter 4 in 2011 (Timepoint of 1/1/2012)			Quarter 1 in 2012 (Timepoint of 1/4/2012)			Quarter 2 in 2012 (Timepoint of 1/7/2012)			Quarter 3 in 2012 (Timepoint of 1/10/2012)		
		Total	Male	Female	Total	Male	Female	Total	Male	Female	Total	Male	Female
RURAL		2 843.9	2 993.1	2 596.6	3 157.5	3 274.5	2 974.7	3 036.0	3 191.6	2 780.4	3 219.8	3 364.4	2 976.5
<i>Economic sector</i>													
1 State		3 110.4	3 143.7	3 070.6	3 756.2	3 793.5	3 711.8	3 462.6	3 540.2	3 369.7	3 762.9	3 817.4	3 699.7
2 Non-state		2 609.2	2 813.2	2 167.4	2 817.7	3 024.4	2 397.8	2 799.7	3 037.3	2 296.9	2 974.4	3 199.2	2 468.5
3 Foreign invested fund		3 866.8	4 774.6	3 313.0	4 107.2	4 743.7	3 781.8	3 840.5	4 243.5	3 630.0	3 748.5	4 198.4	3 530.3
<i>Industrial sector</i>													
1 Agriculture, forestry and fishing		2 403.8	2 596.0	2 067.7	2 603.1	2 728.1	2 401.0	2 359.6	2 558.6	2 013.1	2 438.0	2 638.4	2 073.8
2 Industry and construction		2 905.7	3 079.9	2 578.4	3 246.5	3 367.1	3 030.0	3 085.9	3 254.4	2 775.5	3 258.3	3 423.6	2 946.2
3 Services		2 973.2	3 058.1	2 862.8	3 328.2	3 447.3	3 179.8	3 310.3	3 446.3	3 129.2	3 542.2	3 654.8	3 390.4

Table 14

**UNDEREMPLOYED POPULATION AGED 15 AND OVER BY SEX, URBAN/RURAL RESIDENCE
AND SOCIO-ECONOMIC REGION IN FIRST 9 MONTHS OF 2012**

Unit: Thousand persons

No	Socio-economic region	Quarter 4 in 2011 (Timepoint of 1/1/2012)			Quarter 1 in 2012 (Timepoint of 1/4/2012)			Quarter 2 in 2012 (Timepoint of 1/7/2012)			Quarter 3 in 2012 (Timepoint of 1/10/2012)		
		Total	Male	Female	Total	Male	Female	Total	Male	Female	Total	Male	Female
TOTAL		1 257.5	663.3	594.2	1 494.3	827.9	666.4	1 174.5	666.5	508.1	1 368.9	754.4	614.5
R1	Northern Midlands and Mountains	101.7	57.8	43.9	142.1	83.4	58.7	91.1	52.2	38.9	140.2	69.4	70.8
R2	Red River Delta (*)	243.3	108.9	134.4	266.1	121.7	144.4	256.8	127.7	129.1	252.1	128.5	123.7
R3	North and South Central Coast	365.1	182.9	182.2	362.7	198.8	163.9	237.9	129.0	108.9	324.2	182.4	141.7
R4	Central Highlands	75.1	46.6	28.5	92.1	56.7	35.4	64.8	41.9	23.0	94.2	55.6	38.6
R5	Southeast (*)	36.5	22.7	13.8	99.6	58.8	40.8	49.9	28.4	21.5	53.3	26.5	26.8
R6	Mekong River Delta	389.8	222.7	167.1	467.3	280.5	186.8	427.9	260.8	167.1	451.2	262.4	188.8
R7	Ha noi City	37.8	18.3	19.5	26.7	11.3	15.4	35.9	22.0	13.9	41.6	21.9	19.7
R8	Ho Chi Minh City	8.2	3.5	4.8	37.7	16.7	21.0	10.2	4.4	5.7	12.3	7.8	4.4
URBAN		204.2	112.6	91.6	320.8	175.3	145.4	182.5	94.2	88.3	225.3	123.8	101.4
R1	Northern Midlands and Mountains	11.1	6.3	4.8	21.8	12.4	9.3	12.2	7.2	5.0	12.8	7.8	5.0
R2	Red River Delta (*)	29.5	14.6	14.9	31.7	16.6	15.1	23.9	13.4	10.4	35.6	17.5	18.2
R3	North and South Central Coast	65.9	37.6	28.2	82.2	48.8	33.4	46.4	24.4	22.0	63.6	33.1	30.5
R4	Central Highlands	16.7	9.6	7.1	30.4	16.0	14.3	18.3	8.3	10.1	22.7	12.3	10.4
R5	Southeast (*)	7.4	4.7	2.7	35.6	17.1	18.5	4.9	1.8	3.1	7.1	4.0	3.2
R6	Mekong River Delta	56.7	30.6	26.1	82.3	49.5	32.8	65.4	32.3	33.1	67.8	39.8	28.0
R7	Ha noi City	11.4	7.0	4.4	5.5	2.5	3.1	5.8	3.7	2.1	5.2	2.3	2.8
R8	Ho Chi Minh City	5.5	2.1	3.4	31.4	12.4	19.0	5.6	3.1	2.6	10.5	7.1	3.4

Table 14 (Continued)

Unit: Thousand persons

No	Socio-economic region	Quarter 4 in 2011 (Timepoint of 1/1/2012)			Quarter 1 in 2012 (Timepoint of 1/4/2012)			Quarter 2 in 2012 (Timepoint of 1/7/2012)			Quarter 3 in 2012 (Timepoint of 1/10/2012)		
		Total	Male	Female	Total	Male	Female	Total	Male	Female	Total	Male	Female
RURAL		1 053.3	550.8	502.5	1 173.5	652.6	520.9	992.0	572.3	419.7	1 143.7	630.6	513.1
R1	Northern Midlands and Mountains	90.5	51.5	39.1	120.3	70.9	49.4	78.9	45.0	33.9	127.4	61.6	65.8
R2	Red River Delta (*)	213.7	94.3	119.5	234.4	105.1	129.3	232.9	114.3	118.7	216.5	111.0	105.5
R3	North and South Central Coast	299.3	145.3	153.9	280.5	150.0	130.6	191.5	104.6	86.9	260.6	149.3	111.3
R4	Central Highlands	58.4	37.0	21.4	61.8	40.7	21.1	46.5	33.6	12.9	71.5	43.3	28.2
R5	Southeast (*)	29.1	18.0	11.0	64.0	41.7	22.3	45.0	26.6	18.4	46.1	22.5	23.6
R6	Mekong River Delta	333.2	192.1	141.0	385.0	231.0	154.1	362.5	228.5	134.0	383.4	222.6	160.8
R7	Ha noi City	26.4	11.2	15.1	21.2	8.9	12.3	30.2	18.3	11.9	36.4	19.5	16.9
R8	Ho Chi Minh City	2.7	1.3	1.4	6.3	4.3	2.0	4.5	1.4	3.1	1.8	0.8	1.0

Note: () Red River Delta excludes Hanoi City and Southeast excludes Ho Chi Minh City.*

Table 15

**UNDEREMPLOYED POPULATION IN THE WORKING AGE BY SEX, URBAN/RURAL RESIDENCE
AND SOCIO-ECONOMIC REGION IN FIRST 9 MONTHS OF 2012**

Unit: Thousand persons

No	Socio-economic region	Quarter 4 in 2011 (Timepoint of 1/1/2012)			Quarter 1 in 2012 (Timepoint of 1/4/2012)			Quarter 2 in 2012 (Timepoint of 1/7/2012)			Quarter 3 in 2012 (Timepoint of 1/10/2012)		
		Total	Male	Female	Total	Male	Female	Total	Male	Female	Total	Male	Female
TOTAL		1 195.0	646.2	548.8	1 412.0	804.9	607.1	1 101.8	642.9	458.9	1 275.1	733.0	542.2
R1	Northern Midlands and Mountains	98.9	56.8	42.1	136.5	82.6	53.9	88.3	52.0	36.3	136.0	69.3	66.7
R2	Red River Delta (*)	223.5	104.3	119.2	238.0	116.5	121.4	235.2	120.3	114.9	231.0	124.1	106.9
R3	North and South Central Coast	346.7	178.4	168.3	346.0	191.6	154.4	224.4	123.4	101.0	309.4	177.6	131.8
R4	Central Highlands	74.0	46.6	27.4	90.9	56.3	34.6	64.3	41.6	22.8	93.5	55.2	38.3
R5	Southeast (*)	36.3	22.6	13.6	95.3	58.8	36.6	47.8	28.3	19.5	46.4	25.0	21.3
R6	Mekong River Delta	371.3	215.7	155.6	443.7	272.3	171.4	398.1	251.6	146.5	410.2	254.2	156.0
R7	Ha noi City	36.8	18.3	18.5	25.3	11.3	14.0	33.7	21.3	12.4	36.8	19.8	17.0
R8	Ho Chi Minh City	7.5	3.5	4.0	36.2	15.5	20.7	9.9	4.4	5.5	11.9	7.7	4.2
URBAN		191.3	110.0	81.3	301.6	167.7	133.9	170.6	89.1	81.6	210.4	118.9	91.5
R1	Northern Midlands and Mountains	10.8	6.2	4.5	20.4	11.8	8.6	11.5	6.9	4.6	12.4	7.7	4.8
R2	Red River Delta (*)	26.9	14.1	12.8	30.4	15.8	14.6	20.3	12.4	8.0	30.4	16.6	13.8
R3	North and South Central Coast	60.8	36.4	24.4	74.6	45.3	29.3	42.7	22.3	20.4	59.1	31.0	28.1
R4	Central Highlands	16.0	9.6	6.3	29.2	15.6	13.5	17.8	8.0	9.9	22.5	12.0	10.4
R5	Southeast (*)	7.2	4.6	2.6	34.8	17.1	17.7	4.9	1.7	3.1	7.0	3.9	3.2
R6	Mekong River Delta	53.1	29.9	23.2	76.4	48.2	28.2	62.0	31.0	31.0	63.3	38.3	25.0
R7	Ha noi City	11.4	7.0	4.4	5.5	2.5	3.1	5.8	3.7	2.1	5.2	2.3	2.8
R8	Ho Chi Minh City	5.1	2.1	3.0	30.4	11.4	19.0	5.6	3.1	2.6	10.5	7.1	3.4

Table 15 (Continued)

Unit: Thousand persons

No	Socio-economic region	Quarter 4 in 2011 (Timepoint of 1/1/2012)			Quarter 1 in 2012 (Timepoint of 1/4/2012)			Quarter 2 in 2012 (Timepoint of 1/7/2012)			Quarter 3 in 2012 (Timepoint of 1/10/2012)		
		Total	Male	Female	Total	Male	Female	Total	Male	Female	Total	Male	Female
RURAL		1 003.6	536.1	467.5	1 110.4	637.2	473.2	931.1	553.8	377.3	1 064.7	614.1	450.7
R1	Northern Midlands and Mountains	88.1	50.6	37.6	116.1	70.8	45.3	76.8	45.0	31.8	123.5	61.6	61.9
R2	Red River Delta (*)	196.6	90.2	106.4	207.6	100.7	106.9	214.8	107.9	106.9	200.6	107.5	93.0
R3	North and South Central Coast	285.9	142.0	143.8	271.5	146.3	125.2	181.7	101.1	80.6	250.2	146.6	103.6
R4	Central Highlands	58.0	37.0	21.0	61.7	40.6	21.1	46.5	33.6	12.9	71.1	43.2	27.9
R5	Southeast (*)	29.1	18.0	11.0	60.6	41.7	18.9	42.9	26.6	16.3	39.3	21.2	18.2
R6	Mekong River Delta	318.2	185.8	132.4	367.3	224.1	143.2	336.1	220.6	115.5	346.9	215.9	131.0
R7	Ha noi City	25.4	11.2	14.1	19.8	8.9	10.9	28.0	17.6	10.4	31.7	17.5	14.2
R8	Ho Chi Minh City	2.4	1.3	1.1	5.8	4.2	1.7	4.2	1.4	2.9	1.4	0.6	0.8

Note: () Red River Delta excludes Hanoi City and Southeast excludes Ho Chi Minh City.*

Table 16

UNDEREMPLOYED POPULATION AGED 15 AND OVER BY SEX, URBAN/RURAL RESIDENCE,
ECONOMIC SECTOR AND INDUSTRIAL SECTOR IN FIRST 9 MONTHS OF 2012

Unit: Thousand persons

No	Economic sector/Industrial sector	Quarter 4 in 2011 (Timepoint of 1/1/2012)			Quarter 1 in 2012 (Timepoint of 1/4/2012)			Quarter 2 in 2012 (Timepoint of 1/7/2012)			Quarter 3 in 2012 (Timepoint of 1/10/2012)		
		Total	Male	Female	Total	Male	Female	Total	Male	Female	Total	Male	Female
TOTAL		1 257.5	663.3	594.2	1 494.3	827.9	666.4	1 174.5	666.5	508.1	1 368.9	754.4	614.5
<i>Economic sector</i>													
1	State	15.5	7.4	8.1	22.0	12.3	9.7	13.6	10.0	3.6	11.6	5.8	5.7
2	Non-state	1 234.4	649.5	584.9	1 446.3	806.1	640.3	1 153.6	651.1	502.5	1 355.2	748.1	607.1
3	Foreign invested fund	1.0	0.4	0.6	22.3	9.5	12.8	1.3	1.3	0.0	2.2	0.5	1.7
4	Not stated	6.6	6.0	0.5	3.6	0.0	3.6	6.0	4.0	2.0	0.0	0.0	0.0
<i>Industrial sector</i>													
1	Agriculture, forestry and fishing	990.9	512.3	478.6	1 058.0	555.0	503.0	873.7	471.0	402.8	1 021.8	542.1	479.8
2	Industry and construction	113.4	70.2	43.3	189.4	123.8	65.6	127.3	89.7	37.6	161.7	103.8	57.9
3	Services	153.1	80.8	72.3	246.9	149.1	97.8	173.4	105.7	67.7	185.5	108.6	76.9
4	Not stated	0.0	0.0	0.0	0.0	0.0	0.0	0.0	0.0	0.0	0.0	0.0	0.0

Table 16 (Continued)

Unit: Thousand persons

No	Economic sector/Industrial sector	Quarter 4 in 2011 (Timepoint of 1/1/2012)			Quarter 1 in 2012 (Timepoint of 1/4/2012)			Quarter 2 in 2012 (Timepoint of 1/7/2012)			Quarter 3 in 2012 (Timepoint of 1/10/2012)		
		Total	Male	Female	Total	Male	Female	Total	Male	Female	Total	Male	Female
URBAN		204.2	112.6	91.6	320.8	175.3	145.4	182.5	94.2	88.3	225.3	123.8	101.4
<i>Economic sector</i>													
1	State	8.4	3.6	4.8	12.2	6.8	5.4	7.2	4.7	2.5	4.6	2.8	1.8
2	Non-state	193.9	107.8	86.1	286.0	159.0	127.0	172.3	87.4	84.9	220.7	121.1	99.6
3	Foreign invested fund	1.0	0.4	0.6	22.3	9.5	12.8	0.0	0.0	0.0	0.0	0.0	0.0
4	Not stated	0.9	0.8	0.1	0.2	0.0	0.2	3.0	2.1	1.0	0.0	0.0	0.0
<i>Industrial sector</i>													
1	Agriculture, forestry and fishing	90.5	49.0	41.5	108.7	57.1	51.6	73.1	33.0	40.1	98.0	47.2	50.8
2	Industry and construction	37.9	24.8	13.0	93.4	53.5	39.9	36.4	24.4	12.0	48.7	34.0	14.7
3	Services	75.8	38.7	37.1	118.7	64.7	54.0	73.0	36.7	36.3	78.6	42.7	35.9
4	Not stated	0.0	0.0	0.0	0.0	0.0	0.0	0.0	0.0	0.0	0.0	0.0	0.0
RURAL		1 053.3	550.8	502.5	1 173.5	652.6	520.9	992.0	572.3	419.7	1 143.7	630.6	513.1
<i>Economic sector</i>													
1	State	7.1	3.8	3.3	9.8	5.5	4.3	6.4	5.3	1.1	7.0	3.0	3.9
2	Non-state	1 040.5	541.7	498.8	1 160.3	647.1	513.3	981.3	563.8	417.6	1 134.5	627.0	507.5
3	Foreign invested fund	0.0	0.0	0.0	0.0	0.0	0.0	1.3	1.3	0.0	2.2	0.5	1.7
4	Not stated	5.6	5.2	0.4	3.4	0.0	3.4	3.0	2.0	1.1	0.0	0.0	0.0
<i>Industrial sector</i>													
1	Agriculture, forestry and fishing	900.4	463.3	437.1	949.3	497.9	451.4	800.6	438.0	362.6	923.8	494.9	429.0
2	Industry and construction	75.6	45.3	30.2	96.0	70.3	25.7	91.0	65.3	25.6	112.9	69.8	43.1
3	Services	77.3	42.1	35.2	128.2	84.4	43.8	100.5	69.0	31.4	106.9	65.9	41.0
4	Not stated	0.0	0.0	0.0	0.0	0.0	0.0	0.0	0.0	0.0	0.0	0.0	0.0

Table 17

**UNDEREMPLOYED POPULATION IN THE WORKING AGE BY SEX, URBAN/RURAL RESIDENCE,
ECONOMIC SECTOR AND INDUSTRIAL SECTOR IN FIRST 9 MONTHS OF 2012**

Unit: Thousand persons

No	Economic sector/Industrial sector	Quarter 4 in 2011 (Timepoint of 1/1/2012)			Quarter 1 in 2012 (Timepoint of 1/4/2012)			Quarter 2 in 2012 (Timepoint of 1/7/2012)			Quarter 3 in 2012 (Timepoint of 1/10/2012)		
		Total	Male	Female	Total	Male	Female	Total	Male	Female	Total	Male	Female
TOTAL		1 195.0	646.2	548.8	1 412.0	804.9	607.1	1 101.8	642.9	458.9	1 275.1	733.0	542.2
<i>Economic sector</i>													
1	State	14.7	7.2	7.5	20.1	11.3	8.8	12.2	9.3	2.9	11.4	5.8	5.6
2	Non-state	1 172.9	632.7	540.2	1 365.9	784.1	581.8	1 082.4	628.4	454.0	1 261.5	726.6	534.9
3	Foreign invested fund	1.0	0.4	0.6	22.3	9.5	12.8	1.3	1.3	0.0	2.2	0.5	1.7
4	Not stated	6.3	5.8	0.5	3.6	0.0	3.6	5.9	4.0	1.9	0.0	0.0	0.0
<i>Industrial sector</i>													
1	Agriculture, forestry and fishing	940.6	496.4	444.1	994.8	540.9	453.9	811.6	450.6	361.0	941.5	524.3	417.2
2	Industry and construction	109.3	69.6	39.7	182.3	118.5	63.8	122.5	88.5	34.1	152.9	101.0	51.9
3	Services	145.1	80.2	64.9	234.9	145.5	89.4	167.6	103.9	63.7	180.8	107.6	73.1
4	Not stated	0.0	0.0	0.0	0.0	0.0	0.0	0.0	0.0	0.0	0.0	0.0	0.0

Table 17 (Continued)

Unit: Thousand persons

No	Economic sector/Industrial sector	Quarter 4 in 2011 (Timepoint of 1/1/2012)			Quarter 1 in 2012 (Timepoint of 1/4/2012)			Quarter 2 in 2012 (Timepoint of 1/7/2012)			Quarter 3 in 2012 (Timepoint of 1/10/2012)		
		Total	Male	Female	Total	Male	Female	Total	Male	Female	Total	Male	Female
URBAN		191.3	110.0	81.3	301.6	167.7	133.9	170.6	89.1	81.6	210.4	118.9	91.5
	<i>Economic sector</i>												
1	State	7.5	3.4	4.2	10.5	5.9	4.5	5.8	4.0	1.8	4.4	2.8	1.7
2	Non-state	182.1	105.7	76.4	268.5	152.2	116.3	162.0	83.1	78.9	206.0	116.1	89.8
3	Foreign invested fund	1.0	0.4	0.6	22.3	9.5	12.8	0.0	0.0	0.0	0.0	0.0	0.0
4	Not stated	0.7	0.6	0.1	0.2	0.0	0.2	2.9	2.1	0.8	0.0	0.0	0.0
	<i>Industrial sector</i>												
1	Agriculture, forestry and fishing	85.4	47.7	37.6	99.7	53.8	45.9	67.6	30.7	36.9	87.6	44.1	43.5
2	Industry and construction	35.5	24.2	11.2	91.6	52.7	39.0	34.7	23.5	11.2	46.8	33.0	13.8
3	Services	70.5	38.1	32.4	110.3	61.3	49.0	68.4	34.9	33.5	76.0	41.8	34.2
4	Not stated	0.0	0.0	0.0	0.0	0.0	0.0	0.0	0.0	0.0	0.0	0.0	0.0
RURAL		1 003.6	536.1	467.5	1 110.4	637.2	473.2	931.1	553.8	377.3	1 064.7	614.1	450.7
	<i>Economic sector</i>												
1	State	7.1	3.8	3.3	9.6	5.3	4.3	6.4	5.3	1.1	7.0	3.0	3.9
2	Non-state	990.9	527.1	463.8	1 097.4	631.9	465.5	920.4	545.3	375.1	1 055.5	610.5	445.0
3	Foreign invested fund	0.0	0.0	0.0	0.0	0.0	0.0	1.3	1.3	0.0	2.2	0.5	1.7
4	Not stated	5.6	5.2	0.4	3.4	0.0	3.4	3.0	2.0	1.1	0.0	0.0	0.0
	<i>Industrial sector</i>												
1	Agriculture, forestry and fishing	855.2	448.7	406.5	895.1	487.1	408.0	744.0	419.9	324.2	853.8	480.1	373.7
2	Industry and construction	73.8	45.3	28.5	90.7	65.8	24.8	87.8	64.9	22.9	106.1	68.0	38.1
3	Services	74.6	42.1	32.5	124.6	84.2	40.4	99.3	69.0	30.3	104.8	65.9	38.9
4	Not stated	0.0	0.0	0.0	0.0	0.0	0.0	0.0	0.0	0.0	0.0	0.0	0.0

Table 18

UNEMPLOYED POPULATION AGED 15 AND OVER BY SEX, URBAN/RURAL RESIDENCE
AND SOCIO-ECONOMIC REGION IN FIRST 9 MONTHS OF 2012

Unit: Thousand persons

No	Socio-economic region	Quarter 4 in 2011 (Timepoint of 1/1/2012)			Quarter 1 in 2012 (Timepoint of 1/4/2012)			Quarter 2 in 2012 (Timepoint of 1/7/2012)			Quarter 3 in 2012 (Timepoint of 1/10/2012)		
		Total	Male	Female	Total	Male	Female	Total	Male	Female	Total	Male	Female
TOTAL		853.0	359.4	493.6	980.6	466.4	514.1	882.3	385.0	497.2	984.0	439.4	544.6
R1	Northern Midlands and Mountains	36.4	17.1	19.3	53.4	30.3	23.1	46.5	24.3	22.2	49.8	24.3	25.4
R2	Red River Delta (*)	98.7	43.8	54.9	130.4	74.9	55.6	125.9	71.7	54.2	128.3	73.4	54.9
R3	North and South Central Coast	197.0	96.9	100.0	219.9	114.7	105.2	192.5	89.1	103.3	249.5	111.6	138.0
R4	Central Highlands	32.4	9.1	23.3	44.3	17.9	26.4	39.4	14.2	25.2	52.0	19.1	32.9
R5	Southeast (*)	63.7	23.5	40.2	82.4	43.0	39.3	77.8	31.1	46.7	59.2	28.8	30.4
R6	Mekong River Delta	219.2	77.4	141.8	208.4	70.0	138.4	197.6	55.2	142.4	211.5	68.4	143.1
R7	Ha noi City	58.4	28.1	30.3	68.0	38.3	29.7	68.8	28.8	39.9	85.4	42.6	42.8
R8	Ho Chi Minh City	147.3	63.6	83.7	173.7	77.3	96.5	133.8	70.5	63.3	148.3	71.2	77.1
URBAN		440.8	196.9	243.9	510.4	251.3	259.1	463.6	218.2	245.4	496.4	235.8	260.6
R1	Northern Midlands and Mountains	20.4	10.7	9.8	27.8	14.1	13.6	23.1	12.6	10.5	26.8	14.1	12.8
R2	Red River Delta (*)	48.1	23.7	24.4	59.2	34.5	24.7	63.6	33.5	30.1	63.5	31.8	31.6
R3	North and South Central Coast	92.6	45.7	47.0	107.1	54.7	52.4	95.6	45.9	49.6	108.8	50.9	57.9
R4	Central Highlands	14.0	5.1	8.9	17.3	6.7	10.6	14.5	5.6	8.9	18.2	6.0	12.1
R5	Southeast (*)	33.1	10.0	23.1	36.0	19.0	17.0	32.5	12.2	20.4	21.5	12.4	9.1
R6	Mekong River Delta	63.5	24.4	39.1	64.1	31.5	32.6	66.0	24.7	41.4	70.5	31.9	38.6
R7	Ha noi City	40.9	19.3	21.7	43.0	23.3	19.8	49.9	23.0	27.0	54.2	27.1	27.2
R8	Ho Chi Minh City	128.1	58.1	70.0	155.8	67.5	88.3	118.4	60.9	57.5	132.9	61.6	71.4

Table 18 (Continued)

Unit: Thousand persons

No	Socio-economic region	Quarter 4 in 2011 (Timepoint of 1/1/2012)			Quarter 1 in 2012 (Timepoint of 1/4/2012)			Quarter 2 in 2012 (Timepoint of 1/7/2012)			Quarter 3 in 2012 (Timepoint of 1/10/2012)		
		Total	Male	Female	Total	Male	Female	Total	Male	Female	Total	Male	Female
RURAL		412.3	162.6	249.7	470.2	215.2	255.0	418.7	166.8	251.9	487.6	203.6	284.0
R1	Northern Midlands and Mountains	16.0	6.4	9.6	25.6	16.1	9.5	23.3	11.7	11.7	22.9	10.3	12.7
R2	Red River Delta (*)	50.6	20.1	30.5	71.2	40.4	30.8	62.3	38.2	24.1	64.8	41.6	23.2
R3	North and South Central Coast	104.3	51.2	53.1	112.8	60.0	52.8	96.9	43.2	53.7	140.7	60.7	80.1
R4	Central Highlands	18.4	4.0	14.4	27.0	11.3	15.7	25.0	8.6	16.3	33.9	13.1	20.8
R5	Southeast (*)	30.6	13.5	17.1	46.3	24.0	22.3	45.2	18.9	26.3	37.8	16.4	21.3
R6	Mekong River Delta	155.7	53.0	102.8	144.3	38.5	105.8	131.6	30.5	101.0	141.0	36.4	104.5
R7	Ha noi City	17.5	8.8	8.7	25.0	15.1	9.9	18.9	5.9	13.0	31.2	15.5	15.7
R8	Ho Chi Minh City	19.1	5.5	13.6	17.9	9.7	8.2	15.4	9.7	5.8	15.4	9.6	5.7

Note: () Red River Delta excludes Hanoi City and Southeast excludes Ho Chi Minh City.*

Table 19

**UNEMPLOYED POPULATION IN THE WORKING AGE BY SEX, URBAN/RURAL RESIDENCE
AND SOCIO-ECONOMIC REGION IN FIRST 9 MONTHS OF 2012**

Unit: Thousand persons

No	Socio-economic region	Quarter 4 in 2011 (Timepoint of 1/1/2012)			Quarter 1 in 2012 (Timepoint of 1/4/2012)			Quarter 2 in 2012 (Timepoint of 1/7/2012)			Quarter 3 in 2012 (Timepoint of 1/10/2012)		
		Total	Male	Female	Total	Male	Female	Total	Male	Female	Total	Male	Female
TOTAL		846.6	357.2	489.4	974.1	464.2	509.9	877.1	384.4	492.7	975.7	436.4	539.3
R1	Northern Midlands and Mountains	36.3	17.0	19.3	53.1	30.1	23.0	46.4	24.2	22.2	49.4	24.2	25.2
R2	Red River Delta (*)	98.1	43.4	54.7	130.4	74.9	55.6	125.9	71.7	54.2	126.4	72.4	54.0
R3	North and South Central Coast	195.7	96.2	99.6	216.0	112.9	103.1	190.5	88.7	101.8	247.3	110.9	136.5
R4	Central Highlands	32.2	9.1	23.2	44.3	17.9	26.4	37.7	14.2	23.5	51.9	18.9	32.9
R5	Southeast (*)	63.3	23.2	40.1	81.6	43.0	38.6	77.8	31.1	46.7	58.2	28.8	29.4
R6	Mekong River Delta	217.0	77.2	139.8	206.8	69.8	137.1	196.1	55.0	141.1	211.1	68.2	142.9
R7	Ha noi City	58.2	28.1	30.1	68.0	38.3	29.7	68.8	28.8	39.9	83.0	41.7	41.3
R8	Ho Chi Minh City	145.9	63.2	82.7	173.7	77.3	96.5	133.8	70.5	63.3	148.3	71.2	77.1
URBAN		436.0	195.4	240.6	505.7	249.1	256.6	461.5	217.6	243.9	493.5	234.7	258.8
R1	Northern Midlands and Mountains	20.3	10.6	9.7	27.5	13.9	13.6	23.1	12.6	10.5	26.6	14.0	12.6
R2	Red River Delta (*)	47.4	23.3	24.1	59.2	34.5	24.7	63.6	33.5	30.1	63.5	31.8	31.6
R3	North and South Central Coast	91.9	45.4	46.5	103.9	52.9	51.0	94.5	45.5	49.0	107.5	50.2	57.3
R4	Central Highlands	13.8	5.1	8.8	17.3	6.7	10.6	14.5	5.6	8.9	18.0	5.9	12.1
R5	Southeast (*)	32.9	9.9	23.0	35.3	19.0	16.3	32.5	12.2	20.4	21.5	12.4	9.1
R6	Mekong River Delta	62.1	24.2	38.0	63.5	31.2	32.3	65.0	24.4	40.6	70.2	31.8	38.4
R7	Ha noi City	40.7	19.3	21.4	43.0	23.3	19.8	49.9	23.0	27.0	53.4	27.1	26.3
R8	Ho Chi Minh City	126.8	57.7	69.1	155.8	67.5	88.3	118.4	60.9	57.5	132.9	61.6	71.4

Table 19 (Continued)

Unit: Thousand persons

No	Socio-economic region	Quarter 4 in 2011 (Timepoint of 1/1/2012)			Quarter 1 in 2012 (Timepoint of 1/4/2012)			Quarter 2 in 2012 (Timepoint of 1/7/2012)			Quarter 3 in 2012 (Timepoint of 1/10/2012)		
		Total	Male	Female	Total	Male	Female	Total	Male	Female	Total	Male	Female
RURAL		410.6	161.8	248.8	468.5	215.2	253.3	415.6	166.8	248.8	482.1	201.7	280.5
R1	Northern Midlands and Mountains	16.0	6.4	9.6	25.6	16.1	9.5	23.3	11.7	11.7	22.8	10.3	12.6
R2	Red River Delta (*)	50.6	20.1	30.5	71.2	40.4	30.8	62.3	38.2	24.1	62.9	40.5	22.4
R3	North and South Central Coast	103.8	50.8	53.1	112.1	60.0	52.1	96.0	43.2	52.8	139.8	60.7	79.2
R4	Central Highlands	18.4	4.0	14.4	27.0	11.3	15.7	23.3	8.6	14.6	33.9	13.1	20.8
R5	Southeast (*)	30.4	13.3	17.1	46.3	24.0	22.3	45.2	18.9	26.3	36.8	16.4	20.4
R6	Mekong River Delta	154.8	53.0	101.8	143.3	38.5	104.8	131.0	30.5	100.5	141.0	36.4	104.5
R7	Ha noi City	17.5	8.8	8.7	25.0	15.1	9.9	18.9	5.9	13.0	29.6	14.7	14.9
R8	Ho Chi Minh City	19.1	5.5	13.6	17.9	9.7	8.2	15.4	9.7	5.8	15.4	9.6	5.7

Note: () Red River Delta excludes Hanoi City and Southeast excludes Ho Chi Minh City.*

Table 20

**UNEMPLOYED POPULATION AGED 15 AND OVER BY SEX, URBAN/RURAL RESIDENCE
AND LEVEL OF TECHNIQUE AND QUALIFICATION IN FIRST 9 MONTHS OF 2012**

Unit: Thousand persons

No	Level of technique and qualification	Quarter 4 in 2011 (Timepoint of 1/1/2012)			Quarter 1 in 2012 (Timepoint of 1/4/2012)			Quarter 2 in 2012 (Timepoint of 1/7/2012)			Quarter 3 in 2012 (Timepoint of 1/10/2012)		
		Total	Male	Female	Total	Male	Female	Total	Male	Female	Total	Male	Female
TOTAL		853.0	359.4	493.6	980.6	466.4	514.1	882.3	385.0	497.2	984.0	439.4	544.6
1	No technique and qualification	632.2	256.5	375.7	716.3	323.9	392.4	631.0	261.6	369.4	678.0	291.8	386.2
2	Vocation training	53.5	39.4	14.2	61.7	50.4	11.2	56.3	42.3	13.9	69.1	48.2	20.9
3	Secondary vocation school	46.9	16.9	30.0	66.2	26.0	40.2	59.7	22.3	37.3	65.5	25.8	39.7
4	College	42.2	14.1	28.1	37.3	15.9	21.4	57.5	24.4	33.0	55.4	20.3	35.2
5	University and over	77.5	32.6	44.9	97.9	50.2	47.7	74.0	32.5	41.5	111.1	53.3	57.8
6	Not stated	0.7	0.0	0.7	1.1	0.0	1.1	3.8	1.8	2.0	4.9	0.0	4.9
URBAN		440.8	196.9	243.9	510.4	251.3	259.1	463.6	218.2	245.4	496.4	235.8	260.6
1	No technique and qualification	305.5	133.2	172.3	364.6	176.5	188.1	316.1	147.8	168.3	317.5	145.1	172.3
2	Vocation training	32.6	24.2	8.4	33.5	26.7	6.9	27.4	19.3	8.1	40.4	28.7	11.7
3	Secondary vocation school	28.1	10.4	17.7	30.7	7.9	22.8	32.7	10.5	22.2	37.5	15.6	21.8
4	College	20.7	6.5	14.2	19.4	7.2	12.2	29.4	12.5	16.8	28.5	11.8	16.7
5	University and over	53.1	22.5	30.6	62.1	33.0	29.1	56.5	26.8	29.6	72.6	34.6	38.0
6	Not stated	0.7	0.0	0.7	0.0	0.0	0.0	1.6	1.3	0.3	0.0	0.0	0.0

Table 20 (Continued)

Unit: Thousand persons

No	Level of technique and qualification	Quarter 4 in 2011 (Timepoint of 1/1/2012)			Quarter 1 in 2012 (Timepoint of 1/4/2012)			Quarter 2 in 2012 (Timepoint of 1/7/2012)			Quarter 3 in 2012 (Timepoint of 1/10/2012)		
		Total	Male	Female	Total	Male	Female	Total	Male	Female	Total	Male	Female
RURAL		412.3	162.6	249.7	470.2	215.2	255.0	418.7	166.8	251.9	487.6	203.6	284.0
1	No technique and qualification	326.7	123.2	203.5	351.7	147.4	204.3	314.9	113.8	201.1	360.6	146.7	213.9
2	Vocation training	20.9	15.1	5.8	28.1	23.8	4.4	28.9	23.0	5.9	28.7	19.5	9.2
3	Secondary vocation school	18.7	6.5	12.2	35.5	18.1	17.4	26.9	11.8	15.1	28.0	10.2	17.8
4	College	21.5	7.6	13.9	17.9	8.7	9.2	28.1	11.9	16.2	26.9	8.5	18.4
5	University and over	24.5	10.1	14.4	35.8	17.2	18.6	17.6	5.7	11.9	38.5	18.7	19.8
6	Not stated	0.0	0.0	0.0	1.1	0.0	1.1	2.2	0.6	1.7	4.9	0.0	4.9

Table 21

**UNEMPLOYED POPULATION IN THE WORKING AGE BY SEX, URBAN/RURAL RESIDENCE
AND LEVEL OF TECHNIQUE AND QUALIFICATION IN FIRST 9 MONTHS OF 2012**

Unit: Thousand persons

No	Level of technique and qualification	Quarter 4 in 2011 (Timepoint of 1/1/2012)			Quarter 1 in 2012 (Timepoint of 1/4/2012)			Quarter 2 in 2012 (Timepoint of 1/7/2012)			Quarter 3 in 2012 (Timepoint of 1/10/2012)		
		Total	Male	Female	Total	Male	Female	Total	Male	Female	Total	Male	Female
TOTAL		846.6	357.2	489.4	974.1	464.2	509.9	877.1	384.4	492.7	975.7	436.4	539.3
1	No technique and qualification	626.3	254.5	371.7	710.2	321.8	388.4	628.5	261.3	367.2	672.0	289.8	382.2
2	Vocation training	53.4	39.4	14.0	61.6	50.4	11.1	56.3	42.3	13.9	68.7	48.2	20.5
3	Secondary vocation school	46.9	16.9	30.0	66.1	26.0	40.1	59.3	22.3	37.0	65.3	25.8	39.5
4	College	41.9	13.8	28.1	37.3	15.9	21.4	57.5	24.4	33.0	54.7	20.3	34.4
5	University and over	77.5	32.6	44.9	97.8	50.1	47.7	73.4	32.2	41.2	110.1	52.4	57.8
6	Not stated	0.7	0.0	0.7	1.1	0.0	1.1	2.1	1.8	0.3	4.9	0.0	4.9
URBAN		436.0	195.4	240.6	505.7	249.1	256.6	461.5	217.6	243.9	493.5	234.7	258.8
1	No technique and qualification	301.2	132.0	169.2	360.2	174.4	185.8	315.0	147.5	167.5	315.3	144.1	171.2
2	Vocation training	32.5	24.2	8.2	33.4	26.7	6.8	27.4	19.3	8.1	40.0	28.7	11.3
3	Secondary vocation school	28.1	10.4	17.7	30.6	7.9	22.7	32.4	10.5	21.9	37.3	15.6	21.7
4	College	20.5	6.2	14.2	19.4	7.2	12.2	29.4	12.5	16.8	28.5	11.8	16.7
5	University and over	53.0	22.5	30.5	62.0	32.9	29.1	55.8	26.4	29.4	72.5	34.5	38.0
6	Not stated	0.7	0.0	0.7	0.0	0.0	0.0	1.6	1.3	0.3	0.0	0.0	0.0

Table 21 (Continued)

Unit: Thousand persons

No	Level of technique and qualification	Quarter 4 in 2011 (Timepoint of 1/1/2012)			Quarter 1 in 2012 (Timepoint of 1/4/2012)			Quarter 2 in 2012 (Timepoint of 1/7/2012)			Quarter 3 in 2012 (Timepoint of 1/10/2012)		
		Total	Male	Female	Total	Male	Female	Total	Male	Female	Total	Male	Female
RURAL		410.6	161.8	248.8	468.5	215.2	253.3	415.6	166.8	248.8	482.1	201.7	280.5
1	No technique and qualification	325.0	122.5	202.5	350.0	147.4	202.6	313.5	113.8	199.7	356.7	145.6	211.1
2	Vocation training	20.9	15.1	5.8	28.1	23.8	4.4	28.9	23.0	5.9	28.7	19.5	9.2
3	Secondary vocation school	18.7	6.5	12.2	35.5	18.1	17.4	26.9	11.8	15.1	28.0	10.2	17.8
4	College	21.5	7.6	13.9	17.9	8.7	9.2	28.1	11.9	16.2	26.2	8.5	17.7
5	University and over	24.5	10.1	14.4	35.8	17.2	18.6	17.6	5.7	11.9	37.7	17.9	19.8
6	Not stated	0.0	0.0	0.0	1.1	0.0	1.1	0.6	0.6	0.0	4.9	0.0	4.9

Table 22

**UNEMPLOYED POPULATION AGED 15 AND OVER BY SEX, URBAN/RURAL RESIDENCE
AND AGE GROUP IN FIRST 9 MONTHS OF 2012**

Unit: Thousand persons

Age group	Quarter 4 in 2011 (Timepoint of 1/1/2012)			Quarter 1 in 2012 (Timepoint of 1/4/2012)			Quarter 2 in 2012 (Timepoint of 1/7/2012)			Quarter 3 in 2012 (Timepoint of 1/10/2012)		
	Total	Male	Female	Total	Male	Female	Total	Male	Female	Total	Male	Female
TOTAL	853.0	359.4	493.6	980.6	466.4	514.1	882.3	385.0	497.2	984.0	439.4	544.6
15 - 19	110.2	54.5	55.7	168.8	91.3	77.5	143.2	65.8	77.4	166.1	83.0	83.1
20 - 24	229.8	97.6	132.2	286.5	134.4	152.1	271.7	108.0	163.7	291.3	128.7	162.6
25 - 29	148.6	48.4	100.2	164.5	68.6	95.9	165.5	72.6	93.0	175.1	77.4	97.8
30 - 34	73.7	21.5	52.1	86.4	35.3	51.1	71.3	28.1	43.2	69.3	20.6	48.7
35 - 39	54.9	20.2	34.7	61.2	22.5	38.7	45.3	19.6	25.7	53.4	17.4	36.0
40 - 44	57.0	20.6	36.4	51.8	22.1	29.7	40.0	15.0	24.9	50.2	16.8	33.4
45 - 49	59.1	22.2	36.9	58.1	25.2	32.9	40.3	20.1	20.3	42.0	15.0	27.0
50 - 54	69.7	28.5	41.3	57.8	25.8	32.1	72.5	28.0	44.5	91.7	41.0	50.7
55 - 59	45.5	43.6	2.0	40.7	39.0	1.8	30.4	27.2	3.1	39.3	36.5	2.8
60 - 64	2.7	1.3	1.4	3.5	1.7	1.9	1.1	0.4	0.7	2.7	1.0	1.7
65 +	1.7	0.9	0.8	1.1	0.6	0.6	1.0	0.2	0.7	2.8	2.0	0.8

Table 22 (Continued)

Unit: Thousand persons

Age group	Quarter 4 in 2011 (Timepoint of 1/1/2012)			Quarter 1 in 2012 (Timepoint of 1/4/2012)			Quarter 2 in 2012 (Timepoint of 1/7/2012)			Quarter 3 in 2012 (Timepoint of 1/10/2012)		
	Total	Male	Female	Total	Male	Female	Total	Male	Female	Total	Male	Female
URBAN	440.8	196.9	243.9	510.4	251.3	259.1	463.6	218.2	245.4	496.4	235.8	260.6
15 - 19	45.0	27.3	17.7	59.2	37.1	22.1	50.4	27.9	22.6	56.0	33.8	22.2
20 - 24	108.3	45.6	62.7	131.4	63.9	67.5	129.3	50.7	78.7	133.4	63.6	69.8
25 - 29	75.6	30.9	44.7	81.9	38.1	43.8	92.8	43.1	49.7	99.8	46.5	53.3
30 - 34	46.0	14.7	31.4	47.0	17.2	29.8	46.4	18.4	28.0	37.0	12.6	24.3
35 - 39	34.3	12.5	21.9	41.4	16.2	25.2	32.8	16.2	16.6	35.3	13.4	22.0
40 - 44	33.6	11.0	22.7	33.2	15.1	18.2	24.3	10.8	13.5	28.9	12.3	16.6
45 - 49	29.2	12.8	16.4	44.5	16.7	27.8	26.3	14.3	12.0	24.8	7.9	17.0
50 - 54	42.8	19.5	23.3	41.1	18.8	22.3	40.8	17.9	22.9	55.2	21.5	33.7
55 - 59	23.1	21.1	2.0	27.5	26.0	1.5	19.0	18.4	0.6	24.9	23.1	1.8
60 - 64	1.5	1.1	0.5	2.5	1.7	0.9	1.1	0.4	0.7	1.0	1.0	0.0
65 +	1.3	0.4	0.8	0.7	0.6	0.1	0.4	0.2	0.2	0.1	0.1	0.0
RURAL	412.3	162.6	249.7	470.2	215.2	255.0	418.7	166.8	251.9	487.6	203.6	284.0
15 - 19	65.2	27.2	38.0	109.6	54.2	55.4	92.8	37.9	54.8	110.1	49.2	60.9
20 - 24	121.5	52.0	69.5	155.2	70.5	84.7	142.4	57.4	85.0	157.9	65.1	92.9
25 - 29	72.9	17.5	55.4	82.6	30.5	52.2	72.7	29.5	43.3	75.3	30.9	44.4
30 - 34	27.6	6.9	20.7	39.4	18.1	21.2	24.9	9.7	15.2	32.4	8.0	24.4
35 - 39	20.6	7.7	12.8	19.8	6.3	13.4	12.5	3.4	9.1	18.1	4.0	14.0
40 - 44	23.4	9.7	13.7	18.6	7.1	11.5	15.7	4.2	11.4	21.3	4.5	16.8
45 - 49	29.9	9.4	20.5	13.6	8.5	5.1	14.1	5.8	8.3	17.2	7.2	10.0
50 - 54	26.9	9.0	18.0	16.8	7.0	9.8	31.7	10.1	21.7	36.4	19.4	17.0
55 - 59	22.5	22.5	0.0	13.2	13.0	0.2	11.4	8.9	2.5	14.4	13.4	1.0
60 - 64	1.2	0.2	0.9	1.0	0.0	1.0	0.0	0.0	0.0	1.7	0.0	1.7
65 +	0.5	0.5	0.0	0.5	0.0	0.5	0.6	0.0	0.6	2.7	1.9	0.8