

**MINISTRY OF PLANNING AND INVESTMENT  
GENERAL STATISTICS OFFICE**

**REPORT  
ON LABOUR FORCE SURVEY  
Quarter 4, 2012**

**Hanoi, 2013**



# INTRODUCTION

On 05 December 2011, the General Statistical Office's Director General issued the Decision No 810/QĐ-TCTK on conducting the 2012 Labour Force survey (LFS) and the Project of the 2012 Labour Force survey.

The purpose of the survey had collecting basics information on labour market in 2012 in experience comparison with data of previous annual survey of the General Statistics Office and in accordance with the international standards. The information of this survey is used to assess the fluctuation of labour market among quarters in the years and monitor the influence of socio-economic change on labour market in Vietnam. The synthetic information is presented for the whole country, urban/rural areas; 6 socio-economic regions, Hanoi and Hochiminh city for quarterly and all centrally governed cities/provinces for yearly.

This report has presented major findings of the fourth quarter 2012 Labour force survey in order to provide information about labour and employment to data users. This survey aim to collect information about main activities relate to labour market for persons aged 15 and above. Therefore, labour market indicators were presented in this report, mainly calculated those aged 15 and above. Because in Vietnam, demand in using labour market indicator for population in working age (15-59 years old for male and 15-54 years old for female), so the results for this age group were separately calculated for some key indicators about unemployment and underemployment.

The 2012 LFS were received technical support from International Labour Organization (ILO). The General Statistics Office highly appreciates this support and would like to continue receiving future supports from ILO in the upcoming survey.

The General Statistics Office hope that this report will meet basic demands for information from researchers socio-economic policy makers, especially from those persons related to labour and employment issues and warmly welcome all constructive comments from readers.

Comments and detailed information, please contact the following address:

Department of Population and Labour Statistics, General Statistics Office, 6B Hoang Dieu, Ha Noi.

Tel: +(84 4) 38 230 100, 38 433 353;

Fax: +(84 4) 37 339 287;

Email: [dansolaodong@gso.gov.vn](mailto:dansolaodong@gso.gov.vn)

**GENERAL STATISTICS OFFICE**

# TABLE OF CONTENTS

Introduction .....	iii
Table of contents .....	v
<b>I. SUMMARY .....</b>	<b>1</b>
<b>II. MAJOR FINDINGS .....</b>	<b>4</b>
<b>1. Labor force .....</b>	<b>4</b>
1.1 Size and distribution of labour force and labour force participation rate .....	4
1.2 Age structure of labour force .....	5
<b>2. Employment .....</b>	<b>6</b>
<b>3. Underemployment and unemployment .....</b>	<b>9</b>
3.1 Underemployed and unemployed population .....	9
3.2 Underemployment rate and unemployment rate .....	11
<b>III. TABULATED TABLES .....</b>	<b>15</b>



## **I. SUMMARY**

- As of the 1<sup>st</sup> January 2013, the total working-age population of Viet Nam aged 15 years and older was 68.82 million, of which 52.79 million people were in the labour force. On a year-on-year basis, the labour force grew by 250 thousand as the urban labour force expanded by 401 thousand (2.6%) while the rural labour force contracted by 151 thousand (0.4%). Despite this urbanization process, rural areas still accounted for 69.5% of the total labour force.
- The labour force participation rate was 76.7% and higher in rural areas (80.3%) than in urban areas (69.6%). In urban areas, the labour force participation rate remained nearly unchanged during the first, second and third quarters, but decreased slightly in the fourth quarter. In addition, a gender gap in participation is prevalent: female labour force participation is 72.4% and 8.8 percentage points lower than the rate for men.
- The labour force consisted of 51.93 million employed persons and 857.4 thousand unemployed persons. Total employment increased on an annual basis from the fourth quarter of 2011 by 246 thousand (0.5%). Notably, male employment expanded by 191 thousand, outpacing growth in female employment of 55 thousand. Moreover, job growth was concentrated in urban areas as rural employment contracted.
- The employment-to-population ratio of the population aged 15 and over in the fourth quarter of 2012 was 75.5%. However, there were considerable differences between urban and rural areas and between men and women. The urban employment-to-population ratio was 11.5 percentage points lower than the ratio in rural areas, and the male-female gap was 8.9 percentage points.
- In the fourth quarter of 2012, underemployment increased by 69.3 thousand (5.6%) to 1,326.8 thousand compared to the fourth quarter of 2011, with the adverse rise solely impacting men. Underemployment also remained primarily a rural challenge as 83.3% of all underemployed workers were based in rural areas.
- Overall the unemployment rate remained low at 1.81% with the total unemployed population increasing by merely 4.3 thousand to 857 thousand

compared to the same period of the previous year. However, the female unemployed population decreased by 32 thousand (6.5%) while the number of unemployed men expanded by 37 thousand (10.3%).

- In regard to young persons aged 15-24, the youth unemployment rate was 5.29% in the fourth quarter of 2012. Youth accounted for 45.7% of the total unemployed population, with the proportion in urban areas (38.3%) lower than in rural areas (53.2%). Meanwhile, youth underemployment accounted for only 24.0% in total underemployment with little difference between urban and rural areas.
- Among wage workers, average monthly earnings increased on a year-on-year basis by 17.3% to 3,805 thousand dong in the fourth quarter of 2012. Despite more robust earnings growth for women than men during the past year, the male-female earning gap remained sizeable at 9.3%. Meanwhile the urban-rural earning differential increased to 27.1%.

#### **Selected key indicators of the labour market, Quarter 4 in 2011 and Quarters 3 and 4 in 2012**

Indicator	Quarter 4, 2011	Quarter 3, 2012	Quarter 4, 2012
<b>1. Population aged 15+ (thousands)</b>	<b>67 970</b>	<b>68 742</b>	<b>68 822</b>
Male	32 930	33 379	33 450
Female	35 041	35 363	35 372
Urban	22 518	23 025	23 139
Rural	45 452	45 717	45 683
<b>2. Labour force aged 15+ (thousands)</b>	<b>52 538</b>	<b>53 098</b>	<b>52 788</b>
Male	26 942	27 313	27 169
Female	25 596	25 786	25 619
Urban	15 714	16 154	16 115
Rural	36 825	36 944	36 674
<b>3. Employed population aged 15+ (thousands)</b>	<b>51 685</b>	<b>52 114</b>	<b>51 931</b>
Male	26 583	26 873	26 774
Female	25 102	25 241	25 157
Urban	15 273	15 658	15 684
Rural	36 412	36 457	36 247



Indicator	Quarter 4, 2011	Quarter 3, 2012	Quarter 4, 2012
<b>4. Underemployed population aged 15+ (thousands)</b>	<b>1 257</b>	<b>1 369</b>	<b>1 327</b>
Male	663	754	737
Female	594	615	589
Urban	204	225	222
Rural	1 053	1 144	1 105
<b>5. Unemployed population aged 15+ (thousands)</b>	<b>853</b>	<b>984</b>	<b>857</b>
Male	359	439	396
Female	494	545	462
Urban	441	496	430
Rural	412	488	427
<b>6. Unemployed youth population aged 15-24 (thousands)</b>	<b>340</b>	<b>457</b>	<b>392</b>
Male	152	211	183
Female	188	246	209
Urban	153	189	165
Rural	187	268	227
<b>7. Average monthly earning of wage workers (thousands)</b>	<b>3 244</b>	<b>3 766</b>	<b>3 805</b>
Male	3 426	3 924	3 952
Female	2 975	3 532	3 586
Urban	3 728	4 401	4 469
Rural	2 844	3 220	3 257
<b>8. Distribution of labour force by age group (%)</b>	<b>100.0</b>	<b>100.0</b>	<b>100.0</b>
15-19	11.2	10.8	10.6
20-24	9.9	9.6	9.1
25-29	10.5	10.1	9.8
30-34	9.9	9.7	9.8
35-39	10.3	10.0	10.2
40-44	9.9	10.1	10.2
45-49	9.7	9.9	9.9
50-54	8.2	8.6	8.7
55-59	6.4	6.6	6.8
60-64	4.0	4.6	4.5
65+	9.9	10.1	10.3

Indicator	Quarter 4, 2011	Quarter 3, 2012	Quarter 4, 2012
<b>9. Labour force participation rate (%)</b>	<b>77.3</b>	<b>77.2</b>	<b>76.7</b>
Male	81.8	81.8	81.2
Female	73.0	72.9	72.4
Urban	69.8	70.2	69.6
Rural	81.0	80.8	80.3
<b>10. Employment-to-population ratio aged 15+ (%)</b>	<b>76.0</b>	<b>75.8</b>	<b>75.5</b>
Male	80.7	80.5	80.0
Female	71.6	71.4	71.1
Urban	67.8	68.0	67.8
Rural	80.1	79.7	79.3
<b>11. Underemployment rate of working age (%)</b>	<b>2.58</b>	<b>2.75</b>	<b>2.71</b>
Male	2.61	2.94	2.90
Female	2.55	2.52	2.50
Urban	1.35	1.46	1.44
Rural	3.12	3.33	3.29
<b>12. Unemployment rate of working age (%)</b>	<b>1.80</b>	<b>2.06</b>	<b>1.81</b>
Male	1.42	1.72	1.56
Female	2.22	2.45	2.10
Urban	2.99	3.31	2.88
Rural	1.26	1.48	1.32
<b>13. Youth unemployment rate aged 15-24 (%)</b>	<b>4.23</b>	<b>5.70</b>	<b>5.29</b>
Male	3.47	4.80	4.49
Female	5.15	6.78	6.28
Urban	7.99	9.52	8.73
Rural	3.05	4.44	4.12

## II. MAJOR FINDINGS

### 1. Labour Force

#### *1.1 Size and distribution of labour force and labour force participation rate*

As of the fourth quarter of 2012, the total labour force aged 15 and older in Viet Nam was 52.79 million. Despite an increasing trend in the proportion of the labour force in urban areas, approximately 69.5% of the labour force in Viet Nam was still concentrated in rural areas. Moreover, 56.6% of the total labour force was based in just three regions: the Red River Delta, the North and South Central Coast and the Mekong River Delta. In addition, females accounted for 48.5% of the total labour force, or 25.62 million.

**Table 1: Distribution of labour force, Quarter 4 in 2012, and labour force participation rate by quarter in 2012**

*Unit: %*

Residence/Socio-economic region	Distribution of labour force				Labour force participation rate			
	Total	Male	Female	% Female	Quarter 1	Quarter 2	Quarter 3	Quarter 4
<b>Entire country</b>	<b>100.0</b>	<b>100.0</b>	<b>100.0</b>	<b>48.5</b>	<b>76.4</b>	<b>76.9</b>	<b>77.2</b>	<b>76.7</b>
Urban	30.5	30.6	30.5	48.5	70.2	70.3	70.2	69.6
Rural	69.5	69.4	69.5	48.6	79.5	80.2	80.8	80.3
<b>Socio-economic region</b>								
Northern Midlands and Mountains	13.8	13.4	14.2	50.1	83.7	84.2	85.3	84.3
Red River Delta (*)	15.4	14.8	16.1	50.6	74.5	75.5	76.9	76.7
North and South Central Coast	21.6	21.0	22.2	49.9	77.4	77.7	78.3	77.9
Central Highlands	6.0	6.1	6.0	48.1	82.9	83.4	83.0	82.6
Southeast (*)	8.6	8.7	8.5	48.0	77.7	78.4	78.1	77.6
Mekong River Delta	19.6	20.9	18.2	45.1	77.2	78.0	77.7	76.8
Ha Noi city	7.2	7.1	7.3	49.3	69.7	69.9	70.1	70.0
Ho Chi Minh city	7.8	8.0	7.5	46.8	66.4	65.8	65.1	64.6
(*) Red River Delta excludes Hanoi city and Southeast excludes Ho Chi Minh city								

At the national level, the labour force participation rate increased steadily from 76.4% in the first quarter to 77.2% in the third quarter, but decreased in the fourth quarter to 76.7%. The rural labour force participation

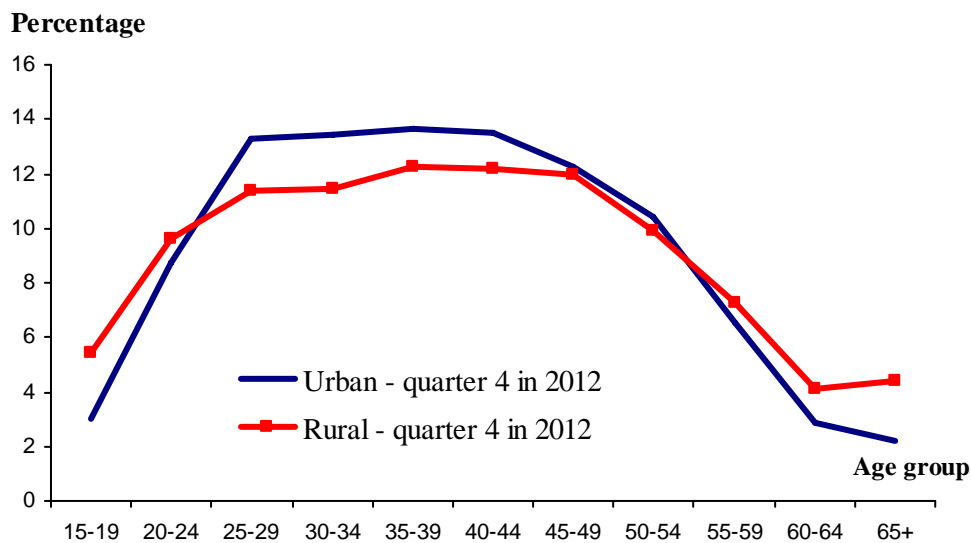
rate (80.3%) was higher than the rate for urban areas (69.6%). Notably, in terms of regional differences, the labour force participation rate was highest in the two mountainous regions of the Northern Midlands and Mountains (84.3%) and Central Highlands (82.6%). Meanwhile, it was the lowest in the two largest socio-economic centres of Viet Nam, namely in Hanoi (70.0%) and Ho Chi Minh City (64.6%).

## 1.2 Age structure of labour force

The distribution of the labour force by age group provides some context of the demographic and socio-economic situation. Viet Nam has a relatively young labour force, with nearly one-half (49.5%) of the labour force less than 40 years old.

There were substantial differences in the age structure of the labour force between urban and rural areas (Figure 1). The share of youth (aged 15-24) and older persons (aged 55 years and older) in the labour force of urban areas is lower than in rural areas. In contrast, the proportion of the labour force in the prime working age group (aged 25-54) was higher for urban areas than for rural areas. This pattern could reflect higher participation in education for urban youth in comparison to rural youth, and longer working lives for older persons in rural areas.

**Figure 1: Distribution of labour force by age group and residence, Quarter 4 in 2012**



## 2. Employment

Table 2 shows the distribution of the employed population by sex and region and the employment-to-population ratio of each quarter in 2012. 69.8% of all workers were based in rural areas, while females made up 48.4% of the total employed population. In terms of regions, the North and South Central Coast and the Mekong River Delta accounted for 21.5% and 19.5% of total employment, respectively. The employment-to-population ratio stood at 75.5% in the fourth quarter. Observing regional trends from the third quarter to the fourth quarter of 2012, the employment-to-population ratio increased to 68.8% in Hanoi city, remained unchanged at 62.8% in Ho Chi Minh city but decreased in the remaining regions.

**Table 2: Distribution of employed population, Quarter 4 in 2012, and employment-to-population ratio by quarter in 2012**

*Unit: %*

Residence/Socio-economic region	Distribution of employed population				Employment-to-population ratio			
	Total	Male	Female	% Female	Quarter 1	Quarter 2	Quarter 3	Quarter 4
<b>Entire country</b>	<b>100.0</b>	<b>100.0</b>	<b>100.0</b>	<b>48.4</b>	<b>75.0</b>	<b>75.6</b>	<b>75.8</b>	<b>75.5</b>
Urban	30.2	30.3	30.1	48.3	67.9	68.3	68.0	67.8
Rural	69.8	69.7	69.9	48.5	78.5	79.3	79.7	79.3
<b>Socio-economic region</b>								
Northern Midlands and Mountains	13.9	13.5	14.4	50.1	83.0	83.6	84.7	83.8
Red River Delta (*)	15.4	14.8	16.1	50.6	73.3	74.3	75.7	75.6
North and South Central Coast	21.5	20.9	22.2	49.9	75.8	76.4	76.6	76.3
Central Highlands	6.0	6.1	6.0	48.0	81.7	82.3	81.7	81.6
Southeast (*)	8.7	8.8	8.6	47.8	76.3	77.1	77.1	76.6
Mekong River Delta	19.5	20.9	18.1	44.8	75.7	76.6	76.1	75.4
Ha Noi city	7.2	7.1	7.3	49.3	68.4	68.6	68.5	68.8
Ho Chi Minh city	7.7	7.9	7.4	46.6	63.6	63.6	62.8	62.8
(*) Red River Delta excludes Hanoi City and Southeast excludes Ho Chi Minh city								

In the fourth quarter of 2012, the employed population increased by 933 thousand people compared to the first quarter of 2012, mainly driven by trends in the Red River Delta (249 thousand), Northern Midlands and Mountains (160 thousand) and the North and South Central Coast (159

thousand). On a year-on-year basis from the fourth quarter of 2011, total employment increased by 245.5 thousand, or by 0.5%.

Overall, the employment-to-population ratio was 75.5% in the fourth quarter of 2012. There was a considerable differential in the employment-to-population ratio between urban and rural areas. The employment-to-population ratio in urban areas was lower than rural areas by 11.5 percentage points.

By socio-economic region, the highest employment-to-population ratio were observed in the two mountainous regions, namely Northern Midlands and Mountains and Central Highlands, and the lowest were in two most economically developed centres of Hanoi city and Ho Chi Minh city.

Table 3 reflects the distribution of the employed population by industrial and economic sector in the fourth quarter of 2012.

**Table 3: Distribution of employed population by industrial sector and economic sector in quarter 4 in 2012**

*Unit: %*

Sex/Residence/Region	Industrial sector:			Economic sector:		
	Agriculture, forestry and fishing	Industry and construction	Services	State	Non-state	Foreign investment
<b>Entire country</b>	<b>46.8</b>	<b>21.6</b>	<b>31.7</b>	<b>10.5</b>	<b>86.0</b>	<b>3.5</b>
Urban	14.9	27.5	57.6	19.9	74.1	6.0
Rural	60.5	19.0	20.4	6.4	91.2	2.4
<b>Sex</b>						
Male	44.5	25.9	29.6	11.0	86.7	2.3
Female	49.2	17.0	33.8	10.0	85.3	4.7
<b>Socio-economic region</b>						
Northern Midlands and Mountains	69.8	12.5	17.7	9.5	89.3	1.1
Red River Delta (*)	40.7	30.2	29.2	10.1	86.0	3.9
North and South Central Coast	53.0	18.1	28.9	9.9	89.2	0.8
Central Highland	72.3	7.7	20.0	9.5	90.3	0.3
Southeast (*)	34.1	34.4	31.5	10.6	72.9	16.4
Mekong River Delta	51.2	16.6	32.2	7.5	91.2	1.3
Ha Noi city	25.0	27.8	47.3	19.6	77.8	2.6
Ho Chi Minh city	2.9	34.0	63.1	14.8	76.8	8.4
(*) Red River Delta excludes Hanoi city and Southeast excludes Ho Chi Minh city						

**Figure 2: Proportion of employed population by industrial sector and region, quarter 4 in 2012**



In the fourth quarter of 2012, there were 1326.8 thousand underemployed persons and a population of 857.4 thousand unemployed. Compared to the same period of the previous year, underemployment increased by about 69.3 thousand and unemployment by 4.3 thousand. In addition, 83.3% of the underemployed population were rural-based, and 55.6% were men. In contrast, women made up a slight majority (53.8%) of the unemployed.

**Table 4: Underemployment and unemployment by quarter in 2012***Units: Thousands persons*

Sex/Residence/Region	Underemployed				Unemployed			
	Quarter 1	Quarter 2	Quarter 3	Quarter 4	Quarter 1	Quarter 2	Quarter 3	Quarter 4
<b>Whole country</b>	<b>1494.3</b>	<b>1 174.5</b>	<b>1 368.9</b>	<b>1 326.8</b>	<b>980.6</b>	<b>882.3</b>	<b>984.0</b>	<b>857.4</b>
Urban	320.8	182.5	225.3	221.9	510.4	463.6	496.4	430.5
Rural	1 173.5	992.0	1 143.7	1 104.9	470.2	418.7	487.6	426.9
<b>Sex</b>								
Male	827.9	666.5	754.4	737.4	466.4	385.0	439.4	395.8
Female	666.4	508.1	614.5	589.3	514.1	497.2	544.6	461.5
<b>Socio-economic regions</b>								
Northern Midlands and Mountains	142.1	91.1	140.2	158.4	53.4	46.5	49.8	44.6
Red River Delta (*)	266.1	256.8	252.1	214.0	130.4	125.9	128.3	122.6
North and South Central Coast	362.7	237.9	324.2	378.8	219.9	192.5	249.5	223.1
Central Highlands	92.1	64.8	94.2	76.5	44.3	39.4	52.0	36.7
Southeast (*)	99.6	49.9	53.3	43.3	82.4	77.8	59.2	56.4
Mekong River Delta	467.3	427.9	451.2	424.2	208.4	197.6	211.5	190.5
Ha Noi city	26.7	35.9	41.6	25.4	68.0	68.8	85.4	65.9
Ho Chi Minh city	37.7	10.2	12.3	6.2	173.7	133.8	148.3	117.6
(*) Red River Delta excludes Hanoi city and Southeast excludes Ho Chi Minh city								

In regard to young people aged 15-24, youth accounted for 45.7% of the total unemployed, with the proportion in urban areas (38.3%) lower than in rural areas (53.2%) in the fourth quarter of 2012. Meanwhile, youth accounted for only 24.0% of the total underemployed population, with little difference between urban and rural areas.

In sum, youth and female unemployment have become important challenges for society, given their vulnerability to fluctuations in the labour market.



**Table 5: Distribution of underemployment and unemployment by sex, age group and urban-rural location, Quarter 4 in 2012**

*Unit: %*

Age group	Proportion of underemployment				Proportion of unemployment			
	Total	Male	Female	% Female	Total	Male	Female	% Female
<b>Total</b>	<b>100.0</b>	<b>100.0</b>	<b>100.0</b>	<b>44.4</b>	<b>100.0</b>	<b>100.0</b>	<b>100.0</b>	<b>53.8</b>
15-24	22.0	26.2	16.8	33.9	45.7	46.3	45.2	53.2
25-54	69.9	66.5	74.1	47.1	49.0	42.9	54.3	59.6
55-59	5.8	4.9	6.9	52.8	4.8	10.1	0.3	3.3
60 and over	2.4	2.4	2.3	42.9	0.4	0.6	0.2	31.1
<b>Urban</b>	<b>100.0</b>	<b>100.0</b>	<b>100.0</b>	<b>43.1</b>	<b>100.0</b>	<b>100.0</b>	<b>100.0</b>	<b>54.2</b>
15-24	17.6	17.7	17.6	42.9	38.3	41.4	35.7	50.5
25-54	72.3	73.2	71.2	42.4	56.6	48.4	63.5	60.9
55-59	7.4	6.2	8.9	52.1	4.9	9.9	0.6	6.6
60 and over	2.6	2.9	2.3	38.2	0.2	0.3	0.2	48.6
<b>Rural</b>	<b>100.0</b>	<b>100.0</b>	<b>100.0</b>	<b>44.7</b>	<b>100.0</b>	<b>100.0</b>	<b>100.0</b>	<b>53.4</b>
15-24	22.9	27.9	16.7	32.5	53.2	51.2	54.9	55.2
25-54	69.4	65.1	74.6	48.1	41.4	37.5	44.8	57.9
55-59	5.5	4.6	6.5	53.0	4.8	10.3	0.0	0.0
60 and over	2.3	2.3	2.3	43.9	0.6	1.0	0.3	23.7

### ***3.2 Underemployment rate and unemployment rate***

The underemployment and unemployment rates presented below are calculated for the population of the working age (including persons aged 15-59 years old for males and 15-54 years old for females).

In Viet Nam, the urban unemployment rate was consistently higher than in rural areas. Similarly, the unemployment rate among females was higher than that of males. The unemployment rate across regions was very different with that of Ho Chi Minh city being the highest.

In contrast, the rural underemployment rate (3.29%) was higher than the urban rate (1.44%), while there were inconsiderable differences in underemployment between males and females. Among the different regions, the Mekong River Delta had highest underemployment rate at 4.43%.

The underemployment rate of the whole country trended downward during the course of the year due to slower production at the beginning of the year and accelerated production at the end of the year.

**Table 6: Underemployment and unemployment rate in the working age by quarters in 2012**

*Unit: %*

Sex/Residence/Region	Underemployment rate				Unemployment rate			
	Quarter 1	Quarter 2	Quarter 3	Quarter 4	Quarter 1	Quarter 2	Quarter 3	Quarter 4
<b>Whole country</b>	<b>3.09</b>	<b>2.39</b>	<b>2.75</b>	<b>2.71</b>	<b>2.08</b>	<b>1.87</b>	<b>2.06</b>	<b>1.81</b>
Urban	2.14	1.19	1.46	1.44	3.46	3.12	3.31	2.88
Rural	3.51	2.93	3.33	3.29	1.46	1.29	1.48	1.32
<b>Sex</b>								
Male	3.29	2.61	2.94	2.90	1.86	1.54	1.72	1.56
Female	2.85	2.14	2.52	2.50	2.34	2.25	2.45	2.10
<b>Socio-economic region</b>								
Northern Midlands and Mountains	2.13	1.37	2.07	2.31	0.82	0.72	0.75	0.68
Red River Delta (*)	3.55	3.45	3.34	2.85	1.91	1.81	1.79	1.76
North and South Central Coast	3.57	2.32	3.16	3.80	2.18	1.93	2.46	2.21
Central Highlands	3.24	2.26	3.26	2.61	1.56	1.31	1.78	1.23
Southeast (*)	2.35	1.14	1.10	1.00	1.97	1.83	1.36	1.33
Mekong River Delta	4.88	4.38	4.55	4.43	2.22	2.11	2.29	2.06
Ha Noi city	0.77	1.03	1.12	0.59	2.02	2.05	2.46	1.92
Ho Chi Minh city	0.98	0.26	0.32	0.13	4.47	3.44	3.80	3.02
(*) Red River Delta excludes Hanoi city and Southeast excludes Ho Chi Minh city								

Despite slower economic growth in 2012, the unemployment rate in Viet Nam remained low. For example, the urban unemployment rate in the fourth quarter of 2012 was hardly unchanged from the fourth quarter of 2011 (2.88% compared to 2.99%). This could be explained in part by the low level of development of the economy, where living standards are not high, the social security system is not developed and workers must stay employed, even in the informal sector where earnings are low and unstable, in order to support themselves and their family.

**Table 7: Underemployment rate and unemployment rate in the working age in  
2009-2012**

*Unit: %*

	Underemployment rate			Unemployment rate		
	Total	Urban	Rural	Total	Urban	Rural
<b>2009</b>	<b>5.41</b>	<b>3.19</b>	<b>6.30</b>	<b>2.90</b>	<b>4.60</b>	<b>2.25</b>
<b>2010</b>	<b>3.57</b>	<b>1.82</b>	<b>4.26</b>	<b>2.88</b>	<b>4.29</b>	<b>2.30</b>
<b>2011</b>	<b>2.96</b>	<b>1.58</b>	<b>3.56</b>	<b>2.22</b>	<b>3.60</b>	<b>1.60</b>
Quarter 1 in 2011	3.86	2.06	4.64	2.82	4.35	2.14
Quarter 2 in 2011	2.82	1.55	3.37	2.22	3.59	1.62
Quarter 3 in 2011	2.55	1.37	3.06	1.98	3.43	1.34
Quarter 4 in 2011	2.58	1.35	3.12	1.80	2.99	1.26
<b>2012</b>	<b>2.74</b>	<b>1.56</b>	<b>3.27</b>	<b>1.96</b>	<b>3.21</b>	<b>1.39</b>
Quarter 1 in 2012	3.09	2.14	3.51	2.08	3.46	1.46
Quarter 2 in 2012	2.39	1.19	2.93	1.87	3.12	1.29
Quarter 3 in 2012	2.75	1.46	3.33	2.06	3.31	1.48
Quarter 4 in 2012	2.71	1.44	3.29	1.81	2.88	1.32



### **III. TABULATED TABLES**



**Table 1**

**POPULATION AGED 15 AND ABOVE BY SEX, URBAN RURAL RESIDENCE AND AGE GROUP, 2012**

*Unit: Thousand persons*

Age group	Quarter 1 in 2012 (At 1/4/2012)			Quarter 2 in 2012 (At 1/7/2012)			Quarter 3 in 2012 (At 1/10/2012)			Quarter 4 in 2012 (At 1/1/2013)		
	Total	Male	Female	Total	Male	Female	Total	Male	Female	Total	Male	Female
<b>TOTAL</b>	<b>68 010.8</b>	<b>33 038.3</b>	<b>34 972.5</b>	<b>68 361.9</b>	<b>33 180.0</b>	<b>35 181.9</b>	<b>68 742.0</b>	<b>33 379.0</b>	<b>35 363.0</b>	<b>68 821.8</b>	<b>33 449.6</b>	<b>35 372.3</b>
15 - 19	7 596.9	3 950.2	3 646.7	7 438.6	3 891.1	3 547.4	7 448.8	3 929.3	3 519.6	7 306.2	3 820.2	3 486.0
20 - 24	6 751.5	3 492.6	3 258.9	6 740.1	3 475.5	3 264.6	6 569.1	3 401.8	3 167.3	6 294.4	3 301.3	2 993.1
25 - 29	6 991.3	3 435.3	3 556.1	6 896.3	3 476.7	3 419.6	6 939.4	3 552.5	3 386.9	6 760.2	3 369.9	3 390.3
30 - 34	6 600.7	3 255.9	3 344.9	6 706.9	3 246.3	3 460.6	6 679.7	3 219.1	3 460.6	6 712.5	3 312.8	3 399.6
35 - 39	6 961.2	3 465.9	3 495.4	6 816.8	3 398.3	3 418.5	6 891.5	3 418.3	3 473.2	7 016.5	3 456.8	3 559.7
40 - 44	6 682.5	3 325.9	3 356.6	6 831.3	3 347.5	3 483.8	6 912.9	3 372.9	3 539.9	7 000.2	3 430.1	3 570.1
45 - 49	6 666.9	3 307.8	3 359.1	6 716.1	3 364.9	3 351.2	6 798.0	3 399.0	3 398.9	6 813.9	3 427.7	3 386.2
50 - 54	5 684.3	2 651.9	3 032.3	5 815.3	2 736.9	3 078.4	5 911.0	2 811.4	3 099.6	5 994.8	2 816.4	3 178.4
55 - 59	4 373.9	2 081.8	2 292.1	4 411.6	2 054.7	2 356.9	4 550.6	2 123.3	2 427.3	4 691.4	2 261.2	2 430.2
60 - 64	2 830.1	1 294.8	1 535.3	3 049.1	1 406.3	1 642.8	3 130.8	1 430.7	1 700.1	3 128.7	1 426.1	1 702.6
65 and over	6 871.4	2 776.4	4 095.0	6 939.8	2 781.8	4 158.0	6 910.3	2 720.7	4 189.6	7 103.0	2 826.8	4 276.1

Table 1 (continue)

Unit: Thousand persons

Age group	Quarter 1 in 2012 (At 1/4/2012)			Quarter 2 in 2012 (At 1/7/2012)			Quarter 3 in 2012 (At 1/10/2012)			Quarter 4 in 2012 (At 1/1/2013)		
	Total	Male	Female	Total	Male	Female	Total	Male	Female	Total	Male	Female
<b>URBAN</b>	<b>22 476.5</b>	<b>10 690.8</b>	<b>11 785.7</b>	<b>22 800.5</b>	<b>10 853.1</b>	<b>11 947.4</b>	<b>23 024.5</b>	<b>10 999.8</b>	<b>12 024.7</b>	<b>23 138.5</b>	<b>11 038.6</b>	<b>12 099.9</b>
15 - 19	2 211.8	1 106.7	1 105.1	2 190.6	1 099.9	1 090.8	2 198.1	1 129.4	1 068.8	2 176.5	1 124.4	1 052.0
20 - 24	2 164.8	1 032.2	1 132.6	2 214.8	1 049.3	1 165.5	2 161.5	1 052.5	1 108.9	2 118.0	1 031.6	1 086.5
25 - 29	2 405.0	1 157.4	1 247.6	2 447.2	1 179.2	1 267.9	2 477.5	1 197.0	1 280.5	2 360.5	1 129.9	1 230.6
30 - 34	2 213.1	1 046.8	1 166.3	2 242.2	1 061.0	1 181.2	2 302.0	1 083.1	1 219.0	2 332.5	1 115.6	1 216.9
35 - 39	2 383.7	1 188.4	1 195.3	2 285.8	1 124.2	1 161.6	2 271.9	1 108.3	1 163.5	2 378.5	1 154.2	1 224.4
40 - 44	2 271.0	1 115.8	1 155.2	2 344.2	1 143.4	1 200.8	2 394.2	1 158.3	1 235.9	2 382.7	1 155.3	1 227.4
45 - 49	2 200.9	1 076.8	1 124.2	2 239.6	1 107.5	1 132.1	2 218.3	1 088.1	1 130.1	2 232.8	1 107.4	1 125.3
50 - 54	1 980.2	921.8	1 058.5	2 056.2	982.8	1 073.4	2 120.2	1 006.4	1 113.8	2 089.5	970.0	1 119.5
55 - 59	1 513.7	712.1	801.6	1 564.5	729.9	834.6	1 602.8	772.1	830.8	1 659.9	809.8	850.1
60 - 64	1 005.6	450.5	555.1	1 050.1	461.4	588.7	1 073.9	468.6	605.3	1 106.5	479.5	627.0
65 and over	2 126.7	882.2	1 244.5	2 165.3	914.5	1 250.9	2 204.2	936.1	1 268.1	2 301.0	960.8	1 340.2
<b>RURAL</b>	<b>45 534.3</b>	<b>22 347.6</b>	<b>23 186.7</b>	<b>45 561.4</b>	<b>22 327.0</b>	<b>23 234.4</b>	<b>45 717.5</b>	<b>22 379.2</b>	<b>23 338.3</b>	<b>45 683.3</b>	<b>22 410.9</b>	<b>23 272.4</b>
15 - 19	5 385.1	2 843.5	2 541.6	5 247.9	2 791.2	2 456.7	5 250.7	2 799.9	2 450.8	5 129.8	2 695.8	2 434.0
20 - 24	4 586.7	2 460.4	2 126.4	4 525.3	2 426.2	2 099.1	4 407.6	2 349.2	2 058.4	4 176.4	2 269.8	1 906.6
25 - 29	4 586.3	2 277.8	2 308.5	4 449.1	2 297.4	2 151.7	4 461.9	2 355.5	2 106.4	4 399.7	2 240.0	2 159.7
30 - 34	4 387.6	2 209.1	2 178.6	4 464.8	2 185.4	2 279.4	4 377.7	2 136.0	2 241.6	4 380.0	2 197.2	2 182.7
35 - 39	4 577.6	2 277.5	2 300.1	4 531.1	2 274.1	2 256.9	4 619.6	2 310.0	2 309.7	4 637.9	2 302.7	2 335.3
40 - 44	4 411.5	2 210.1	2 201.4	4 487.1	2 204.1	2 283.0	4 518.7	2 214.7	2 304.0	4 617.5	2 274.8	2 342.7
45 - 49	4 466.0	2 231.0	2 234.9	4 476.5	2 257.4	2 219.0	4 579.7	2 310.9	2 268.8	4 581.1	2 320.3	2 260.8
50 - 54	3 704.1	1 730.2	1 973.9	3 759.1	1 754.1	2 005.0	3 790.8	1 805.0	1 985.8	3 905.2	1 846.4	2 058.9
55 - 59	2 860.2	1 369.6	1 490.6	2 847.2	1 324.8	1 522.4	2 947.8	1 351.3	1 596.5	3 031.5	1 451.4	1 580.1
60 - 64	1 824.6	844.3	980.3	1 999.0	944.9	1 054.1	2 056.9	962.0	1 094.8	2 022.2	946.6	1 075.5
65 and over	4 744.7	1 894.2	2 850.5	4 774.5	1 867.3	2 907.1	4 706.1	1 784.6	2 921.5	4 802.0	1 866.1	2 935.9



**Table 2**

**LABOUR FORCE AGED 15 AND ABOVE BY SEX, URBAN RURAL RESIDENCE AND AGE GROUP, 2012**

*Unit: Thousand persons*

Age group	Quarter 1 in 2012 (At 1/4/2012)			Quarter 2 in 2012 (At 1/7/2012)			Quarter 3 in 2012 (At 1/10/2012)			Quarter 4 in 2012 (At 1/1/2013)		
	Total	Male	Female	Total	Male	Female	Total	Male	Female	Total	Male	Female
<b>TOTAL</b>	<b>51 978.4</b>	<b>26 700.9</b>	<b>25 277.5</b>	<b>52 581.3</b>	<b>26 980.5</b>	<b>25 600.7</b>	<b>53 098.5</b>	<b>27 312.5</b>	<b>25 785.9</b>	<b>52 788.2</b>	<b>27 169.4</b>	<b>25 618.8</b>
15 - 19	2 745.1	1 573.9	1 171.2	2 657.2	1 505.0	1 152.1	2 836.8	1 603.2	1 233.7	2 478.2	1 408.6	1 069.6
20 - 24	5 265.9	2 823.2	2 442.7	5 305.5	2 843.8	2 461.7	5 195.2	2 803.1	2 392.0	4 926.8	2 675.9	2 250.9
25 - 29	6 496.1	3 303.1	3 192.9	6 437.9	3 343.3	3 094.6	6 490.1	3 423.6	3 066.5	6 316.7	3 260.4	3 056.3
30 - 34	6 252.0	3 180.5	3 071.4	6 368.9	3 172.9	3 196.0	6 324.8	3 151.4	3 173.4	6 365.3	3 241.9	3 123.4
35 - 39	6 662.1	3 403.0	3 259.2	6 501.1	3 323.4	3 177.7	6 561.1	3 343.4	3 217.6	6 690.8	3 397.5	3 293.3
40 - 44	6 328.4	3 240.1	3 088.3	6 442.5	3 249.4	3 193.1	6 549.1	3 311.3	3 237.8	6 641.5	3 366.6	3 274.9
45 - 49	6 215.9	3 178.5	3 037.4	6 287.4	3 251.2	3 036.2	6 385.4	3 302.3	3 083.1	6 371.5	3 315.8	3 055.7
50 - 54	5 014.1	2 444.8	2 569.3	5 171.6	2 556.3	2 615.2	5 239.4	2 610.0	2 629.3	5 317.7	2 586.1	2 731.5
55 - 59	3 391.2	1 759.7	1 631.5	3 455.2	1 775.4	1 679.8	3 560.8	1 829.7	1 731.1	3 729.9	1 974.3	1 755.6
60 - 64	1 756.6	875.8	880.8	1 955.3	988.5	966.8	2 015.6	1 030.4	985.2	1 982.1	990.5	991.6
65 and over	1 851.0	918.3	932.7	1 998.7	971.3	1 027.4	1 940.3	904.1	1 036.2	1 967.9	952.0	1 015.8

Table 2 (continue)

Unit: Thousand persons

Age group	Quarter 1 in 2012 (At 1/4/2012)			Quarter 2 in 2012 (At 1/7/2012)			Quarter 3 in 2012 (At 1/10/2012)			Quarter 4 in 2012 (At 1/1/2013)		
	Total	Male	Female	Total	Male	Female	Total	Male	Female	Total	Male	Female
<b>URBAN</b>	<b>15 773.4</b>	<b>8 097.4</b>	<b>7 675.9</b>	<b>16 037.9</b>	<b>8 264.4</b>	<b>7 773.5</b>	<b>16 154.1</b>	<b>8 343.4</b>	<b>7 810.7</b>	<b>16 114.7</b>	<b>8 304.0</b>	<b>7 810.7</b>
15 - 19	523.1	285.9	237.2	514.5	271.9	242.6	530.1	286.2	244.0	484.9	267.2	217.7
20 - 24	1 472.8	711.9	760.9	1 502.8	725.1	777.7	1 460.4	727.0	733.4	1 404.8	697.3	707.5
25 - 29	2 174.0	1 093.8	1 080.1	2 242.4	1 125.4	1 117.0	2 261.7	1 136.5	1 125.2	2 144.3	1 073.9	1 070.4
30 - 34	2 052.0	1 023.5	1 028.5	2 071.0	1 030.4	1 040.7	2 131.7	1 055.4	1 076.3	2 164.9	1 083.5	1 081.4
35 - 39	2 224.7	1 162.1	1 062.7	2 122.0	1 098.1	1 023.9	2 091.8	1 079.3	1 012.4	2 204.1	1 131.9	1 072.2
40 - 44	2 084.5	1 076.0	1 008.5	2 132.3	1 101.7	1 030.7	2 187.7	1 131.3	1 056.3	2 179.1	1 124.0	1 055.2
45 - 49	1 954.5	1 020.2	934.3	1 986.7	1 054.7	932.0	1 960.9	1 032.3	928.6	1 980.0	1 053.0	927.0
50 - 54	1 578.9	800.2	778.8	1 673.4	875.9	797.5	1 715.0	889.0	826.0	1 677.3	832.6	844.6
55 - 59	953.0	538.0	415.0	960.1	551.7	408.4	985.6	581.0	404.6	1 054.9	618.6	436.3
60 - 64	398.3	202.7	195.6	450.2	222.3	228.0	467.3	243.2	224.1	467.0	245.7	221.2
65 and over	357.5	183.1	174.3	382.4	207.3	175.2	362.0	182.3	179.7	353.4	176.3	177.1
<b>RURAL</b>	<b>36 205.0</b>	<b>18 603.5</b>	<b>17 601.6</b>	<b>36 543.3</b>	<b>18 716.2</b>	<b>17 827.2</b>	<b>36 944.4</b>	<b>18 969.1</b>	<b>17 975.3</b>	<b>36 673.5</b>	<b>18 865.4</b>	<b>17 808.1</b>
15 - 19	2 221.9	1 287.9	934.0	2 142.7	1 233.1	909.6	2 306.7	1 317.0	989.7	1 993.3	1 141.4	851.9
20 - 24	3 793.1	2 111.3	1 681.8	3 802.7	2 118.7	1 684.0	3 734.8	2 076.1	1 658.6	3 522.0	1 978.6	1 543.4
25 - 29	4 322.1	2 209.3	2 112.8	4 195.5	2 217.9	1 977.6	4 228.4	2 287.1	1 941.2	4 172.4	2 186.5	1 985.9
30 - 34	4 200.0	2 157.0	2 043.0	4 297.8	2 142.5	2 155.4	4 193.1	2 096.0	2 097.1	4 200.4	2 158.3	2 042.0
35 - 39	4 437.4	2 240.9	2 196.5	4 379.1	2 225.3	2 153.8	4 469.3	2 264.1	2 205.2	4 486.7	2 265.6	2 221.1
40 - 44	4 243.9	2 164.1	2 079.8	4 310.2	2 147.8	2 162.4	4 361.5	2 180.0	2 181.5	4 462.4	2 242.7	2 219.7
45 - 49	4 261.3	2 158.3	2 103.1	4 300.7	2 196.5	2 104.3	4 424.5	2 270.0	2 154.5	4 391.5	2 262.7	2 128.8
50 - 54	3 435.2	1 644.6	1 790.5	3 498.1	1 680.5	1 817.7	3 524.4	1 721.1	1 803.3	3 640.4	1 753.5	1 886.9
55 - 59	2 438.2	1 221.7	1 216.5	2 495.1	1 223.7	1 271.5	2 575.2	1 248.7	1 326.5	2 674.9	1 355.7	1 319.3
60 - 64	1 358.3	673.1	685.2	1 505.1	766.2	738.9	1 548.3	787.2	761.0	1 515.1	744.8	770.4
65 and over	1 493.6	735.2	758.4	1 616.3	764.1	852.2	1 578.3	721.8	856.5	1 614.5	775.7	838.8

**Table 3**

**LABOUR FORCE AGED 15 AND OVER BY SEX, URBAN/RURAL RESIDENCE AND SOCIO-ECONOMIC REGION, 2012**

*Unit: Thousand persons*

No	Socio-economic region	Quarter 1 in 2012 (At 1/4/2012)			Quarter 2 in 2012 (At 1/7/2012)			Quarter 3 in 2012 (At 1/10/2012)			Quarter 4 in 2012 (At 1/1/2013)		
		Total	Male	Female	Total	Male	Female	Total	Male	Female	Total	Male	Female
WHOLE COUNTRY													
R1	Northern Midlands and Mountains	51 978.4	26 700.9	25 277.5	52 581.3	26 980.5	25 600.7	53 098.5	27 312.5	25 785.9	52 788.2	27 169.4	25 618.8
R2	Red River Delta (*)	7 119.6	3 552.6	3 567.0	7 223.6	3 594.2	3 629.4	7 367.9	3 681.5	3 686.4	7 270.9	3 630.2	3 640.7
R3	North and South Central Coast	7 902.3	3 918.8	3 983.5	8 008.5	3 958.6	4 049.9	8 186.6	4 040.2	4 146.4	8 144.0	4 024.4	4 119.5
R4	Central Highland	11 239.1	5 625.6	5 613.6	11 352.3	5 722.0	5 630.3	11 481.1	5 794.3	5 686.8	11 401.0	5 712.6	5 688.5
R5	Southeast (*)	3 124.8	1 622.2	1 502.6	3 147.3	1 639.8	1 507.5	3 161.3	1 641.2	1 520.1	3 174.6	1 646.6	1 528.1
R6	Mekong River Delta	4 459.5	2 343.4	2 116.1	4 596.6	2 398.9	2 197.7	4 599.7	2 396.8	2 202.9	4 563.5	2 373.1	2 190.4
R7	Ha Noi city	10 350.3	5 613.7	4 736.6	10 459.3	5 636.4	4 822.8	10 446.7	5 678.5	4 768.2	10 341.5	5 675.1	4 666.4
R8	Ho Chi Minh city	3 682.7	1 854.6	1 828.1	3 676.5	1 847.2	1 829.4	3 733.8	1 879.7	1 854.0	3 792.9	1 924.7	1 868.1
		4 100.1	2 170.1	1 930.0	4 117.2	2 183.5	1 933.8	4 121.3	2 200.2	1 921.1	4 099.8	2 182.7	1 917.2
URBAN													
R1	Northern Midlands and Mountains	15 773.4	8 097.4	7 675.9	16 037.9	8 264.4	7 773.5	16 154.1	8 343.4	7 810.7	16 114.7	8 304.0	7 810.7
R2	Red River Delta (*)	1 165.8	568.3	597.5	1 186.6	574.9	611.7	1 204.8	580.6	624.1	1 190.8	578.3	612.5
R3	North and South Central Coast	1 817.2	940.0	877.2	1 860.2	962.5	897.7	1 885.5	980.0	905.5	1 857.1	963.2	893.9
R4	Central Highland	2 872.0	1 430.2	1 441.8	2 958.1	1 494.2	1 463.9	2 967.9	1 496.5	1 471.4	2 986.1	1 501.9	1 484.2
R5	Southeast (*)	899.9	454.1	445.8	898.6	455.8	442.8	899.5	453.4	446.1	922.1	461.7	460.4
R6	Mekong River Delta	1 707.1	846.3	860.8	1 745.4	874.6	870.8	1 757.6	867.4	890.2	1 744.0	848.4	895.5
R7	Ha Noi city	2 465.8	1 287.7	1 178.0	2 520.9	1 305.5	1 215.4	2 522.4	1 316.4	1 205.9	2 507.7	1 314.2	1 193.5
R8	Ho Chi Minh city	1 437.4	738.4	699.0	1 449.3	741.9	707.4	1 476.5	765.6	710.9	1 495.6	774.7	720.9
		3 408.2	1 832.5	1 575.8	3 418.8	1 855.0	1 563.9	3 439.9	1 883.4	1 556.5	3 411.4	1 861.7	1 549.7

**Table 3 (continue)**

*Unit: Thousand persons*

No	Socio-economic region	Quarter 1 in 2012 (At 1/4/2012)			Quarter 2 in 2012 (At 1/7/2012)			Quarter 3 in 2012 (At 1/10/2012)			Quarter 4 in 2012 (At 1/1/2013)		
		Total	Male	Female	Total	Male	Female	Total	Male	Female	Total	Male	Female
<b>RURAL</b>		<b>36 205.0</b>	<b>18 603.5</b>	<b>17 601.6</b>	<b>36 543.3</b>	<b>18 716.2</b>	<b>17 827.2</b>	<b>36 944.4</b>	<b>18 969.1</b>	<b>17 975.3</b>	<b>36 673.5</b>	<b>18 865.4</b>	<b>17 808.1</b>
R1	Northern Midlands and Mountains	5 953.8	2 984.3	2 969.5	6 037.0	3 019.2	3 017.7	6 163.1	3 100.9	3 062.3	6 080.1	3 051.9	3 028.2
R2	Red River Delta (*)	6 085.1	2 978.8	3 106.3	6 148.3	2 996.2	3 152.2	6 301.1	3 060.2	3 240.9	6 286.9	3 061.3	3 225.7
R3	North and South Central Coast	8 367.2	4 195.4	4 171.8	8 394.2	4 227.9	4 166.4	8 513.3	4 297.8	4 215.5	8 415.0	4 210.7	4 204.3
R4	Central Highland	2 224.9	1 168.1	1 056.8	2 248.7	1 184.0	1 064.7	2 261.8	1 187.8	1 074.0	2 252.5	1 184.8	1 067.7
R5	Southeast (*)	2 752.4	1 497.1	1 255.3	2 851.2	1 524.2	1 326.9	2 842.1	1 529.4	1 312.7	2 819.5	1 524.7	1 294.9
R6	Mekong River Delta	7 884.5	4 326.0	3 558.6	7 938.4	4 330.9	3 607.4	7 924.4	4 362.1	3 562.3	7 833.8	4 361.0	3 472.8
R7	Ha Noi city	2 245.3	1 116.2	1 129.1	2 227.2	1 105.2	1 122.0	2 257.3	1 114.1	1 143.1	2 297.3	1 150.1	1 147.2
R8	Ho Chi Minh city	691.9	337.6	354.2	698.4	328.5	369.9	681.4	316.8	364.6	688.5	321.0	367.4

*Note: (\*) Red River Delta excluded Hanoi city and Southeast excluded Ho Chi Minh city*

**Table 4**

**LABOUR FORCE AGED 15 AND OVER BY SEX, URBAN/RURAL RESIDENCE AND PROFESSIONAL AND TECHNICAL QUALIFICATION, 2012**

*Unit: Thousand persons*

No	Professional and technical qualification	Quarter 1 in 2012 (At 1/4/2012)			Quarter 2 in 2012 (At 1/7/2012)			Quarter 3 in 2012 (At 1/10/2012)			Quarter 4 in 2012 (At 1/1/2013)		
		Total	Male	Female	Total	Male	Female	Total	Male	Female	Total	Male	Female
WHOLE COUNTRY													
1	No qualification	51 978.4	26 700.9	25 277.5	52 581.3	26 980.5	25 600.7	53 098.5	27 312.5	25 785.9	52 788.2	27 169.4	25 618.8
2	Vocation training	43 224.2	21 699.4	21 524.8	43 811.8	21 931.5	21 880.3	44 153.7	22 162.9	21 990.8	43 553.6	21 872.4	21 681.3
3	Secondary vocational school	2 374.3	1 848.9	525.4	2 293.1	1 792.4	500.8	2 503.1	1 937.0	566.1	2 742.0	2 113.5	628.5
4	College	1 940.5	871.1	1 069.3	1 909.5	891.3	1 018.2	1 922.4	899.7	1 022.7	1 964.6	910.7	1 053.8
5	University and over	1 035.5	378.1	657.4	1 066.5	405.1	661.3	1 020.2	396.0	624.2	1 015.8	356.3	659.5
6	Not stated	3 313.6	1 858.5	1 455.1	3 405.1	1 910.5	1 494.6	3 425.7	1 876.1	1 549.7	3 422.2	1 868.7	1 553.5
		90.3	44.9	45.4	95.3	49.7	45.6	73.3	40.9	32.4	90.0	47.8	42.2
URBAN													
1	No qualification	15 773.4	8 097.4	7 675.9	16 037.9	8 264.4	7 773.5	16 154.1	8 343.4	7 810.7	16 114.7	8 304.0	7 810.7
2	Vocation training	10 789.7	5 274.7	5 515.0	10 976.0	5 414.5	5 561.5	11 008.8	5 448.5	5 560.2	10 864.3	5 331.3	5 533.0
3	Secondary vocational school	1 133.3	874.9	258.4	1 093.0	840.9	252.1	1 244.9	928.6	316.3	1 322.0	999.8	322.2
4	College	904.7	395.1	509.6	924.7	409.7	515.0	888.7	382.5	506.2	904.4	408.4	496.0
5	University and over	451.8	152.0	299.8	492.3	180.8	311.5	472.7	187.0	285.8	464.6	166.2	298.4
6	Not stated	2 474.4	1 390.9	1 083.6	2 519.8	1 400.6	1 119.2	2 518.2	1 383.1	1 135.1	2 525.5	1 378.7	1 146.8
		19.4	9.8	9.6	32.1	18.0	14.1	20.8	13.7	7.1	33.9	19.6	14.3

**Table 4 (continue)**

*Unit: Thousand persons*

No	Professional and technical qualification	Quarter 1 in 2012 (At 1/4/2012)			Quarter 2 in 2012 (At 1/7/2012)			Quarter 3 in 2012 (At 1/10/2012)			Quarter 4 in 2012 (At 1/1/2013)		
		Total	Male	Female	Total	Male	Female	Total	Male	Female	Total	Male	Female
<b>RURAL</b>													
1	No qualification	36 205.0	18 603.5	17 601.6	36 543.3	18 716.2	17 827.2	36 944.4	18 969.1	17 975.3	36 673.5	18 865.4	17 808.1
2	Vocation training	32 434.5	16 424.6	16 009.9	32 835.8	16 517.0	16 318.7	33 144.9	16 714.4	16 430.6	32 689.4	16 541.1	16 148.3
3	Secondary vocational school	1 241.0	974.0	267.0	1 200.1	951.5	248.6	1 258.2	1 008.3	249.8	1 420.0	1 113.7	306.3
4	College	1 035.7	476.0	559.7	984.8	481.6	503.2	1 033.7	517.2	516.5	1 060.2	502.3	557.8
5	University and over	583.7	226.0	357.7	574.1	224.4	349.8	547.5	209.0	338.4	551.2	190.1	361.1
6	Not stated	839.2	467.7	371.5	885.3	510.0	375.3	907.5	492.9	414.6	896.8	490.0	406.7
		70.9	35.1	35.8	63.2	31.7	31.5	52.5	27.2	25.3	56.1	28.2	27.9

**Table 5**

**EMPLOYED POPULATION AGED 15 AND OVER BY SEX, URBAN/RURAL RESIDENCE  
AND SOCIO-ECONOMIC REGION, 2012**

*Unit: Thousand persons*

No	Socio-economic region	Quarter 1 in 2012 (At 1/4/2012)			Quarter 2 in 2012 (At 1/7/2012)			Quarter 3 in 2012 (At 1/10/2012)			Quarter 4 in 2012 (At 1/1/2013)		
		Total	Male	Female	Total	Male	Female	Total	Male	Female	Total	Male	Female
WHOLE COUNTRY													
R1	Northern Midlands and Mountains	50 997.8	26 234.4	24 763.4	51 699.0	26 595.5	25 103.5	52 114.5	26 873.2	25 241.3	51 930.9	26 773.6	25 157.3
R2	Red River Delta (*)	7 066.2	3 522.3	3 543.9	7 177.1	3 569.9	3 607.2	7 318.1	3 657.1	3 661.0	7 226.2	3 604.6	3 621.7
R3	North and South Central Coast	7 771.8	3 843.9	3 928.0	7 882.6	3 886.9	3 995.7	8 058.3	3 966.8	4 091.5	8 021.4	3 963.0	4 058.4
R4	Central Highland	11 019.2	5 510.9	5 508.4	11 159.8	5 632.9	5 526.9	11 231.6	5 682.7	5 548.9	11 178.0	5 604.3	5 573.6
R5	Southeast (*)	3 080.5	1 604.3	1 476.2	3 107.9	1 625.6	1 482.3	3 109.3	1 622.1	1 487.2	3 138.0	1 632.2	1 505.8
R6	Mekong River Delta	4 377.2	2 300.4	2 076.8	4 518.8	2 367.8	2 151.0	4 540.5	2 368.0	2 172.5	4 507.1	2 352.8	2 154.4
R7	Ha Noi city	10 141.9	5 543.7	4 598.2	10 261.7	5 581.2	4 680.5	10 235.3	5 610.2	4 625.1	10 151.0	5 602.0	4 549.0
R8	Ho Chi Minh city	3 614.7	1 816.3	1 798.4	3 607.8	1 818.3	1 789.4	3 648.3	1 837.1	1 811.2	3 727.0	1 889.6	1 837.4
		3 926.4	2 092.8	1 833.5	3 983.4	2 112.9	1 870.5	3 973.0	2 129.0	1 844.0	3 982.3	2 125.2	1 857.0
URBAN													
R1	Northern Midlands and Mountains	15 263.0	7 846.1	7 416.9	15 574.3	8 046.2	7 528.2	15 657.7	8 107.6	7 550.1	15 684.2	8 107.0	7 577.3
R2	Red River Delta (*)	1 138.0	554.1	583.9	1 163.5	562.4	601.1	1 177.9	566.5	611.4	1 171.9	568.5	603.3
R3	North and South Central Coast	1 758.0	905.5	852.5	1 796.6	929.0	867.6	1 822.0	948.2	873.9	1 806.0	942.0	864.0
R4	Central Highland	2 764.9	1 375.5	1 389.4	2 862.5	1 448.2	1 414.3	2 859.1	1 445.6	1 413.5	2 879.5	1 454.9	1 424.6
R5	Southeast (*)	882.6	447.4	435.2	884.2	450.2	433.9	881.4	447.4	434.0	908.4	455.2	453.2
R6	Mekong River Delta	1 671.1	827.3	843.8	1 712.9	862.5	850.4	1 736.1	855.0	881.2	1 720.5	839.5	881.0
R7	Ha Noi city	2 401.7	1 256.3	1 145.4	2 454.9	1 280.8	1 174.1	2 451.9	1 284.5	1 167.3	2 442.6	1 286.4	1 156.2
R8	Ho Chi Minh city	1 394.4	715.1	679.2	1 399.4	719.0	680.4	1 422.3	738.5	683.7	1 451.8	752.9	698.9
		3 252.4	1 764.9	1 487.5	3 300.4	1 794.1	1 506.3	3 307.0	1 821.9	1 485.1	3 303.6	1 807.5	1 496.0

**Table 5 (continue)**

Unit: Thousand persons

No	Socio-economic region	Quarter 1 in 2012 (At 1/4/2012)			Quarter 2 in 2012 (At 1/7/2012)			Quarter 3 in 2012 (At 1/10/2012)			Quarter 4 in 2012 (At 1/1/2013)		
		Total	Male	Female	Total	Male	Female	Total	Male	Female	Total	Male	Female
<b>RURAL</b>		<b>35 734.9</b>	<b>18 388.3</b>	<b>17 346.6</b>	<b>36 124.7</b>	<b>18 549.4</b>	<b>17 575.3</b>	<b>36 456.8</b>	<b>18 765.5</b>	<b>17 691.2</b>	<b>36 246.6</b>	<b>18 666.6</b>	<b>17 580.0</b>
R1	Northern Midlands and Mountains	5 928.2	2 968.1	2 960.1	6 013.6	3 007.6	3 006.1	6 140.2	3 090.6	3 049.6	6 054.4	3 036.0	3 018.4
R2	Red River Delta (*)	6 013.9	2 938.4	3 075.5	6 086.0	2 957.9	3 128.1	6 236.3	3 018.6	3 217.6	6 215.3	3 021.0	3 194.3
R3	North and South Central Coast	8 254.4	4 135.4	4 119.0	8 297.3	4 184.6	4 112.7	8 372.5	4 237.1	4 135.4	8 298.5	4 149.5	4 149.0
R4	Central Highland	2 197.9	1 156.9	1 041.0	2 223.7	1 175.4	1 048.4	2 227.9	1 174.7	1 053.2	2 229.5	1 176.9	1 052.6
R5	Southeast (*)	2 706.1	1 473.1	1 233.0	2 805.9	1 505.3	1 300.6	2 804.3	1 513.0	1 291.3	2 786.6	1 513.2	1 273.4
R6	Mekong River Delta	7 740.2	4 287.4	3 452.8	7 806.8	4 300.4	3 506.4	7 783.4	4 325.7	3 457.7	7 708.3	4 315.6	3 392.7
R7	Ha Noi city	2 220.3	1 101.1	1 119.2	2 208.4	1 099.3	1 109.0	2 226.1	1 098.6	1 127.5	2 275.2	1 136.7	1 138.6
R8	Ho Chi Minh city	674.0	327.9	346.1	683.0	318.8	364.2	666.0	307.2	358.8	678.7	317.7	361.0

Note: (\*) Red River Delta excluded Hanoi city and Southeast excluded Ho Chi Minh city



**Table 6**

**EMPLOYED POPULATION AGED 15 AND OVER BY SEX, URBAN/RURAL RESIDENCE  
AND PROFESSIONAL AND TECHNICAL QUALIFICATION, 2012**

*Unit: Thousand persons*

No	Professional and technical qualification	Quarter 1 in 2012 (At 1/4/2012)			Quarter 2 in 2012 (At 1/7/2012)			Quarter 3 in 2012 (At 1/10/2012)			Quarter 4 in 2012 (At 1/1/2013)		
		Total	Male	Female	Total	Male	Female	Total	Male	Female	Total	Male	Female
WHOLE COUNTRY													
1	No qualification	50 997.8	26 234.4	24 763.4	51 699.0	26 595.5	25 103.5	52 114.5	26 873.2	25 241.3	51 930.9	26 773.6	25 157.3
2	Vocation training	42 507.9	21 375.5	21 132.4	43 180.8	21 670.0	21 510.8	43 475.6	21 871.1	21 604.6	42 958.1	21 592.1	21 366.0
3	Secondary vocational school	2 312.6	1 798.4	514.2	2 236.9	1 750.1	486.8	2 434.0	1 888.8	545.2	2 680.4	2 070.2	610.1
4	College	1 874.3	845.1	1 029.1	1 849.8	869.0	980.9	1 856.9	873.9	983.0	1 903.8	889.3	1 014.5
5	University and over	998.2	362.2	636.0	1 009.0	380.7	628.3	964.8	375.7	589.0	963.4	342.7	620.7
6	Not stated	3 215.7	1 808.3	1 407.4	3 331.1	1 878.0	1 453.1	3 314.7	1 822.8	1 491.9	3 336.1	1 831.7	1 504.4
		89.2	44.9	44.3	91.5	47.8	43.6	68.5	40.9	27.6	89.1	47.6	41.5
URBAN													
1	No qualification	15 263.0	7 846.1	7 416.9	15 574.3	8 046.2	7 528.2	15 657.7	8 107.6	7 550.1	15 684.2	8 107.0	7 577.3
2	Vocation training	10 425.1	5 098.2	5 326.9	10 659.9	5 266.7	5 393.2	10 691.3	5 303.4	5 387.9	10 585.0	5 201.7	5 383.3
3	Secondary vocational school	1 099.7	848.2	251.5	1 065.6	821.6	244.1	1 204.5	899.9	304.6	1 283.7	971.7	312.0
4	College	874.0	387.3	486.8	892.0	399.2	492.8	851.2	366.8	484.3	873.5	396.5	476.9
5	University and over	432.4	144.8	287.6	462.9	168.2	294.7	444.2	175.2	269.0	440.1	162.2	277.9
6	Not stated	2 412.3	1 357.9	1 054.5	2 463.3	1 373.7	1 089.6	2 445.6	1 348.6	1 097.1	2 468.3	1 355.4	1 112.9
		19.4	9.8	9.6	30.5	16.7	13.8	20.8	13.7	7.1	33.7	19.4	14.3
RURAL													
1	No qualification	35 734.9	18 388.3	17 346.6	36 124.7	18 549.4	17 575.3	36 456.8	18 765.5	17 691.2	36 246.6	18 666.6	17 580.0
2	Vocation training	32 082.8	16 277.3	15 805.5	32 520.9	16 403.3	16 117.6	32 784.3	16 567.7	16 216.7	32 373.1	16 390.4	15 982.7
3	Secondary vocational school	1 212.9	950.2	262.7	1 171.2	928.5	242.7	1 229.4	988.8	240.6	1 396.7	1 098.5	298.1
4	College	1 000.2	457.9	542.4	957.9	469.8	488.1	1 005.7	507.1	498.7	1 030.4	492.8	537.6
5	University and over	565.8	217.4	348.4	546.1	212.5	333.6	520.5	200.5	320.0	523.2	180.5	342.8
6	Not stated	803.3	450.4	352.9	867.7	504.2	363.5	869.0	474.2	394.8	867.8	476.3	391.5
		69.8	35.1	34.7	60.9	31.1	29.8	47.7	27.2	20.5	55.4	28.2	27.2

**Table 7**

**EMPLOYED POPULATION AGED 15 AND OVER BY SEX, URBAN/RURAL RESIDENCE,  
AND ECONOMIC SECTOR, 2012**

*Unit: Thousand persons*

No	Economic sector	Quarter 1 in 2012 (At 1/4/2012)			Quarter 2 in 2012 (At 1/7/2012)			Quarter 3 in 2012 (At 1/10/2012)			Quarter 4 in 2012 (At 1/1/2013)		
		Total	Male	Female	Total	Male	Female	Total	Male	Female	Total	Male	Female
WHOLE COUNTRY													
1	State	50 997.8	26 234.4	24 763.4	51 699.0	26 595.5	25 103.5	52 114.5	26 873.2	25 241.3	51 930.9	26 773.6	25 157.3
		5 432.1	2 938.0	2 494.1	5 379.8	2 922.1	2 457.7	5 273.2	2 853.4	2 419.9	5 449.9	2 938.5	2 511.4
2	Non-state	43 710.0	22 609.1	21 100.9	44 418.6	22 950.9	21 467.7	45 057.3	23 381.3	21 676.0	44 581.0	23 161.1	21 419.8
3	Foreign investment economic	1 716.0	619.6	1 096.3	1 655.5	604.7	1 050.7	1 663.7	573.6	1 090.2	1 794.5	619.6	1 174.9
4	Not stated	139.8	67.7	72.1	245.1	117.7	127.4	120.2	64.9	55.3	105.6	54.4	51.2
URBAN													
1	State	15 263.0	7 846.1	7 416.9	15 574.3	8 046.2	7 528.2	15 657.7	8 107.6	7 550.1	15 684.2	8 107.0	7 577.3
		3 077.5	1 660.1	1 417.4	3 095.8	1 677.3	1 418.5	3 062.7	1 664.3	1 398.4	3 117.7	1 692.5	1 425.2
2	Non-state	11 270.3	5 830.2	5 440.0	11 521.2	5 994.7	5 526.4	11 648.4	6 090.0	5 558.4	11 593.5	6 054.5	5 539.1
3	Foreign investment economic	880.3	336.5	543.8	898.9	343.3	555.5	902.7	325.9	576.8	933.0	334.7	598.3
4	Not stated	35.0	19.4	15.6	58.5	30.8	27.7	43.9	27.4	16.5	40.0	25.3	14.7
RURAL													
1	State	35 734.9	18 388.3	17 346.6	36 124.7	18 549.4	17 575.3	36 456.8	18 765.5	17 691.2	36 246.6	18 666.6	17 580.0
		2 354.6	1 277.9	1 076.7	2 284.1	1 244.9	1 039.2	2 210.6	1 189.1	1 021.5	2 332.1	1 246.0	1 086.2
2	Non-state	32 439.7	16 778.8	15 660.9	32 897.4	16 956.2	15 941.2	33 408.9	17 291.3	16 117.6	32 987.4	17 106.6	15 880.8
3	Foreign investment economic	835.7	283.2	552.5	756.6	261.4	495.2	761.0	247.7	513.4	861.5	284.9	576.5
4	Not stated	104.8	48.4	56.5	186.6	86.9	99.7	76.3	37.5	38.8	65.6	29.1	36.5

**Table 8**

**EMPLOYED POPULATION AGED 15 AND OVER BY SEX, URBAN/RURAL RESIDENCE,  
AND STATUS IN EMPLOYMENT, 2012**

*Unit: Thousand persons*

No	Status in employment	Quarter 1 in 2012 (At 1/4/2012)			Quarter 2 in 2012 (At 1/7/2012)			Quarter 3 in 2012 (At 1/10/2012)			Quarter 4 in 2012 (At 1/1/2013)		
		Total	Male	Female	Total	Male	Female	Total	Male	Female	Total	Male	Female
<b>TOTAL</b>		<b>50 972.2</b>	<b>26 221.2</b>	<b>24 751.1</b>	<b>51 681.0</b>	<b>26 591.2</b>	<b>25 089.8</b>	<b>52 101.3</b>	<b>26 867.4</b>	<b>25 233.8</b>	<b>51 920.1</b>	<b>26 770.8</b>	<b>25 149.4</b>
1	Employer	1 504.6	1 045.6	459.0	1 311.8	912.6	399.2	1 287.6	893.6	394.0	1 464.7	1 022.3	442.4
2	Own-account worker	23 013.5	11 646.4	11 367.1	23 342.7	11 784.1	11 558.6	23 688.5	12 069.2	11 619.2	23 307.6	11 629.2	11 678.3
3	Unpaid family worker	8 728.1	3 131.4	5 596.7	8 994.1	3 194.8	5 799.2	9 396.0	3 333.7	6 062.2	8 781.2	3 145.6	5 635.6
4	Wage worker	17 698.6	10 384.7	7 314.0	17 973.7	10 672.6	7 301.1	17 680.1	10 554.2	7 125.9	18 332.9	10 959.7	7 373.2
5	Member of cooperative	10.7	6.0	4.7	16.0	10.9	5.2	19.9	7.7	12.2	16.8	7.0	9.9
6	Not stated	16.8	7.0	9.7	42.7	16.1	26.5	29.2	8.9	20.2	16.9	7.0	10.0
<b>URBAN</b>		<b>15 259.8</b>	<b>7 844.3</b>	<b>7 415.5</b>	<b>15 572.8</b>	<b>8 046.0</b>	<b>7 526.8</b>	<b>15 652.6</b>	<b>8 104.1</b>	<b>7 548.5</b>	<b>15 677.4</b>	<b>8 104.6</b>	<b>7 572.8</b>
1	Employer	744.0	476.1	267.8	715.9	466.6	249.3	650.9	429.5	221.3	743.7	490.7	253.0
2	Own-account worker	4 994.3	2 295.4	2 698.9	5 190.8	2 404.1	2 786.8	5 285.2	2 462.9	2 822.3	5 125.5	2 351.9	2 773.7
3	Unpaid family worker	1 480.7	581.8	898.9	1 454.9	572.4	882.5	1 539.4	616.6	922.8	1 535.6	615.6	920.0
4	Wage worker	8 033.9	4 487.7	3 546.2	8 199.9	4 598.0	3 601.9	8 167.5	4 589.6	3 577.9	8 265.6	4 642.2	3 623.4
5	Member of cooperative	3.2	1.1	2.1	4.9	2.7	2.2	4.1	3.4	0.7	3.7	2.3	1.4
6	Not stated	3.8	2.1	1.6	6.4	2.3	4.1	5.6	2.0	3.5	3.3	1.9	1.4
<b>RURAL</b>		<b>35 712.4</b>	<b>18 376.9</b>	<b>17 335.6</b>	<b>36 108.2</b>	<b>18 545.2</b>	<b>17 563.0</b>	<b>36 448.6</b>	<b>18 763.4</b>	<b>17 685.3</b>	<b>36 242.7</b>	<b>18 666.2</b>	<b>17 576.6</b>
1	Employer	760.7	569.5	191.2	595.9	446.0	149.9	636.7	464.0	172.7	721.0	531.6	189.4
2	Own-account worker	18 019.2	9 351.0	8 668.2	18 151.9	9 380.1	8 771.8	18 403.3	9 606.3	8 797.0	18 182.0	9 277.4	8 904.7
3	Unpaid family worker	7 247.4	2 549.6	4 697.7	7 539.2	2 622.4	4 916.8	7 856.6	2 717.2	5 139.4	7 245.6	2 529.9	4 715.7
4	Wage worker	9 664.7	5 897.0	3 767.7	9 773.8	6 074.6	3 699.2	9 512.6	5 964.6	3 548.0	10 067.3	6 317.5	3 749.8
5	Member of cooperative	7.5	4.9	2.6	11.2	8.2	3.0	15.8	4.3	11.5	13.1	4.7	8.5
6	Not stated	13.0	4.9	8.1	36.3	13.9	22.4	23.6	6.9	16.7	13.6	5.1	8.5

**Table 9**

**EMPLOYED POPULATION AGED 15 AND OVER BY SEX, URBAN/RURAL RESIDENCE,  
AND MAIN OCCUPATION GROUPS, 2012**

*Unit: Thousand persons*

Occupation	Quarter 1 in 2012 (At 1/4/2012)			Quarter 2 in 2012 (At 1/7/2012)			Quarter 3 in 2012 (At 1/10/2012)			Quarter 4 in 2012 (At 1/1/2013)		
	Total	Male	Female	Total	Male	Female	Total	Male	Female	Total	Male	Female
<b>TOTAL</b>	<b>50 997.8</b>	<b>26 234.4</b>	<b>24 763.4</b>	<b>51 699.0</b>	<b>26 595.5</b>	<b>25 103.5</b>	<b>52 114.5</b>	<b>26 873.2</b>	<b>25 241.3</b>	<b>51 930.9</b>	<b>26 773.6</b>	<b>25 157.3</b>
1. Leaders, managers and administrators of branches, levels and organizations	524.6	395.4	129.2	551.0	418.2	132.8	532.2	401.5	130.7	543.7	420.8	122.9
2. Professionals	2 808.5	1 382.8	1 425.8	2 853.3	1 411.0	1 442.3	2 841.1	1 380.9	1 460.1	2 867.7	1 368.5	1 499.3
3. Technicians and associate professionals	1 772.9	768.9	1 004.0	1 758.0	769.0	989.0	1 681.8	757.9	923.9	1 805.9	808.1	997.9
4. Clerks	829.8	474.3	355.5	822.6	467.5	355.0	854.3	461.9	392.5	868.1	509.6	358.5
5. Service workers and market sales workers	8 216.1	3 006.2	5 209.9	8 307.1	3 065.4	5 241.7	8 234.9	3 117.6	5 117.3	8 346.9	3 079.3	5 267.6
6. Skilled agricultural, forestry and fishery workers	6 692.8	3 799.8	2 893.0	6 513.5	3 680.8	2 832.7	6 468.4	3 582.8	2 885.7	6 614.8	3 647.6	2 967.2
7. Craft and related workers	5 787.2	4 125.5	1 661.7	6 111.1	4 335.9	1 775.3	6 136.2	4 362.5	1 773.7	6 212.8	4 470.0	1 742.8
8. Plant, machine operator and assemblers	3 655.8	2 300.5	1 355.3	3 744.3	2 322.7	1 421.7	3 765.2	2 333.3	1 431.9	3 776.4	2 343.7	1 432.7
9. Elementary occupations	20 565.4	9 864.5	10 701.0	20 908.6	10 023.1	10 885.4	21 485.2	10 380.3	11 104.9	20 761.3	10 017.6	10 743.7
Not stated	144.8	116.7	28.0	129.5	101.9	27.6	115.2	94.6	20.6	133.2	108.4	24.8

Table 9 (continue)

Unit: Thousand persons

Occupation	Quarter 1 in 2012 (At 1/4/2012)			Quarter 2 in 2012 (At 1/7/2012)			Quarter 3 in 2012 (At 1/10/2012)			Quarter 4 in 2012 (At 1/1/2013)		
	Total	Male	Female	Total	Male	Female	Total	Male	Female	Total	Male	Female
<b>URBAN</b>	15 263.0	7 846.1	7 416.9	15 574.3	8 046.2	7 528.2	15 657.7	8 107.6	7 550.1	15 684.2	8 107.0	7 577.3
1. Leaders, managers and administrators of branches, levels and organizations	328.0	241.1	86.8	346.3	256.8	89.4	316.5	232.1	84.4	331.4	244.2	87.2
2. Professionals	2 004.6	1 011.2	993.4	2 049.2	1 034.0	1 015.2	2 057.0	1 028.6	1 028.4	2 054.4	1 007.8	1 046.5
3. Technicians and associate professionals	913.9	415.2	498.7	897.6	399.0	498.6	860.3	381.7	478.6	895.1	408.4	486.7
4. Clerks	462.8	224.6	238.2	489.0	239.5	249.5	499.4	235.2	264.1	505.5	260.3	245.2
5. Service workers and market sales workers	4 207.0	1 504.6	2 702.4	4 255.1	1 541.7	2 713.4	4 342.6	1 644.2	2 698.4	4 363.2	1 624.0	2 739.2
6. Skilled agricultural, forestry and fishery workers	852.2	506.2	346.0	840.5	516.1	324.3	860.2	514.0	346.2	862.9	531.1	331.8
7. Craft and related workers	2 023.5	1 429.3	594.2	2 177.1	1 526.2	650.9	2 200.1	1 544.4	655.7	2 158.0	1 511.8	646.2
8. Plant, machine operator and assemblers	1 758.9	1 153.8	605.1	1 782.6	1 155.9	626.6	1 794.0	1 152.1	641.8	1 783.5	1 146.0	637.5
9. Elementary occupations	2 631.8	1 293.9	1 337.9	2 654.5	1 307.5	1 347.0	2 645.3	1 305.4	1 339.9	2 639.0	1 298.5	1 340.5
Not stated	80.3	66.2	14.1	82.5	69.2	13.3	82.4	70.0	12.4	91.4	75.0	16.3
<b>RURAL</b>	35 734.9	18 388.3	17 346.6	36 124.7	18 549.4	17 575.3	36 456.8	18 765.5	17 691.2	36 246.6	18 666.6	17 580.0
1. Leaders, managers and administrators of branches, levels and organizations	196.6	154.2	42.4	204.7	161.4	43.4	215.7	169.4	46.3	212.3	176.6	35.7
2. Professionals	803.9	371.6	432.3	804.1	377.0	427.1	784.1	352.3	431.7	813.4	360.6	452.7
3. Technicians and associate professionals	858.9	353.6	505.3	860.5	370.0	490.4	821.5	376.2	445.3	910.8	399.7	511.1
4. Clerks	367.0	249.7	117.3	333.5	228.0	105.5	354.9	226.6	128.3	362.6	249.3	113.3
5. Service workers and market sales workers	4 009.1	1 501.6	2 507.5	4 052.0	1 523.7	2 528.3	3 892.2	1 473.3	2 418.9	3 983.8	1 455.3	2 528.4
6. Skilled agricultural, forestry and fishery workers	5 840.7	3 293.6	2 547.1	5 673.0	3 164.6	2 508.4	5 608.3	3 068.8	2 539.5	5 751.9	3 116.6	2 635.3
7. Craft and related workers	3 763.7	2 696.2	1 067.5	3 934.0	2 809.6	1 124.4	3 936.1	2 818.2	1 117.9	4 054.8	2 958.3	1 096.5
8. Plant, machine operator and assemblers	1 896.9	1 146.7	750.2	1 961.8	1 166.7	795.0	1 971.2	1 181.2	790.1	1 992.9	1 197.8	795.2
9. Elementary occupations	17 933.6	8 570.5	9 363.1	18 254.1	8 715.6	9 538.5	18 839.9	9 074.9	9 765.0	18 122.3	8 719.1	9 403.2
Not stated	64.5	50.6	13.9	47.0	32.6	14.3	32.8	24.6	8.2	41.8	33.4	8.4

Table 10

## EMPLOYED POPULATION AGED 15 AND OVER BY SEX, URBAN/RURAL RESIDENCE, AND MAJOR GROUP OF INDUSTRY, 2012

Unit: Thousand persons

Industry	Quarter 1 in 2012 (At 1/4/2012)			Quarter 2 in 2012 (At 1/7/2012)			Quarter 3 in 2012 (At 1/10/2012)			Quarter 4 in 2012 (At 1/1/2013)		
	Total	Male	Female	Total	Male	Female	Total	Male	Female	Total	Male	Female
<b>WHOLE COUNTRY</b>	50 997.8	26 234.4	24 763.4	51 699.0	26 595.5	25 103.5	52 114.5	26 873.2	25 241.3	51 930.9	26 773.6	25 157.3
<b>1. Agriculture, forestry and fishery sector</b>	24 320.2	12 104.3	12 215.9	24 359.0	12 010.0	12 349.0	24 950.8	12 250.1	12 700.7	24 275.5	11 909.1	12 366.3
A. Argiculture, forestry and fishery	24 320.2	12 104.3	12 215.9	24 359.0	12 010.0	12 349.0	24 950.8	12 250.1	12 700.7	24 275.5	11 909.1	12 366.3
<b>2. Industry and construction sector</b>	10 502.5	6 442.2	4 060.3	10 972.8	6 740.9	4 231.9	10 973.3	6 745.6	4 227.7	11 209.5	6 931.9	4 277.6
B. Mining and quarrying	283.4	224.3	59.1	294.2	223.5	70.6	247.7	193.1	54.7	307.2	246.2	61.0
C. Manufacturing	6 874.0	3 280.4	3 593.6	7 122.8	3 384.1	3 738.7	7 236.8	3 424.9	3 811.8	7 216.1	3 405.5	3 810.6
D. Production and distribution of electricity, gas, steam and hot water	134.1	113.7	20.4	132.6	108.0	24.6	133.8	110.2	23.6	123.6	106.6	17.0
E. Distribution of water, management and processing activities of sew	95.1	54.6	40.5	122.7	65.1	57.6	97.4	61.2	36.2	118.9	73.2	45.6
F. Construction	3 115.8	2 769.2	346.6	3 300.5	2 960.0	340.5	3 257.7	2 956.2	301.5	3 443.8	3 100.4	343.4
<b>3. Services sector</b>	16 146.3	7 674.1	8 472.3	16 347.6	7 838.8	8 508.8	16 175.5	7 871.1	8 304.5	16 432.2	7 927.2	8 505.1
G. Wholesale and retail trade, repair of cars, motorcycles and other m	6 306.6	2 614.8	3 691.8	6 296.8	2 627.0	3 669.8	6 305.9	2 693.4	3 612.5	6 491.7	2 743.4	3 748.2
H. Transport and storage	1 441.1	1 299.9	141.2	1 503.8	1 358.6	145.2	1 535.1	1 378.3	156.8	1 525.3	1 379.4	145.9
I. Hotels and restaurants	2 102.0	631.6	1 470.4	2 201.0	656.0	1 545.1	2 175.3	669.7	1 505.6	2 154.9	631.1	1 523.8
J. Information and communication	303.7	191.9	111.8	281.1	175.8	105.2	273.8	168.1	105.7	285.8	187.4	98.4
K. Financial intermediation, banking and insurance	306.4	139.4	167.0	312.5	150.9	161.6	322.1	146.1	176.0	321.7	137.1	184.6
L. Real estate activities	150.4	81.9	68.4	153.2	88.2	65.0	150.1	73.6	76.5	146.7	73.0	73.6
M. Technological, scientific and spicilized activities	239.2	160.7	78.5	246.8	168.1	78.7	268.2	183.8	84.4	250.1	159.8	90.3
N. Administrative activities and supporting services	251.7	153.7	98.0	223.5	131.3	92.2	214.8	129.5	85.3	233.6	147.5	86.1
O. Activities of communist party, social-political organizations, gover	1 572.2	1 163.9	408.3	1 619.8	1 187.4	432.4	1 573.5	1 163.4	410.0	1 620.3	1 211.6	408.6
P. Training and education	1 812.8	528.1	1 284.7	1 829.4	569.9	1 259.4	1 728.1	527.1	1 201.0	1 765.9	497.4	1 268.5
Q. Health and social work	487.7	176.7	311.0	469.1	165.9	303.2	482.2	180.0	302.2	490.0	186.9	303.0
R. Recreational cultural and sporting activities	253.3	117.3	136.0	257.2	115.8	141.4	260.5	126.6	133.9	261.8	130.6	131.2
S. Other service activities	719.1	396.0	323.1	771.8	435.0	336.8	726.5	424.6	301.9	711.2	422.1	289.1
T. Activities of domestic hired labourers in households which produci	199.0	17.9	181.1	179.7	8.0	171.7	152.5	5.5	146.9	171.9	18.8	153.1
U. Extra territorial organizations and bodies	1.1	0.2	0.9	2.2	0.9	1.2	7.0	1.2	5.8	1.6	1.0	0.6
<b>4. Not stated</b>	28.9	13.9	15.0	19.6	5.8	13.8	14.8	6.5	8.4	13.6	5.4	8.2

Table 10 (continue)

Unit: Thousand persons

Industry	Quarter 1 in 2012 (At 1/4/2012)			Quarter 2 in 2012 (At 1/7/2012)			Quarter 3 in 2012 (At 1/10/2012)			Quarter 4 in 2012 (At 1/1/2013)		
	Total	Male	Female	Total	Male	Female	Total	Male	Female	Total	Male	Female
<b>URBAN</b>	15 263.0	7 846.1	7 416.9	15 574.3	8 046.2	7 528.2	15 657.7	8 107.6	7 550.1	15 684.2	8 107.0	7 577.3
<b>1. Agriculture, forestry and fishery sector</b>	2 305.6	1 219.0	1 086.6	2 340.7	1 239.0	1 101.7	2 378.8	1 250.7	1 128.0	2 341.7	1 247.3	1 094.3
A. Argiculture, forestry and fishery	2 305.6	1 219.0	1 086.6	2 340.7	1 239.0	1 101.7	2 378.8	1 250.7	1 128.0	2 341.7	1 247.3	1 094.3
<b>2. Industry and construction sector</b>	4 162.5	2 476.4	1 686.1	4 298.2	2 545.1	1 753.1	4 323.6	2 542.1	1 781.5	4 311.5	2 528.8	1 782.7
B. Mining and quarrying	116.5	85.6	30.9	126.3	86.9	39.4	119.5	84.7	34.7	125.1	93.3	31.8
C. Manufacturing	2 921.4	1 431.6	1 489.9	2 980.7	1 438.9	1 541.8	3 040.3	1 455.9	1 584.5	3 034.7	1 443.7	1 590.9
D. Production and distribution of electricity, gas, steam and hot water	81.2	65.3	15.9	83.1	66.0	17.1	85.5	68.6	16.9	80.8	66.2	14.6
E. Distribution of water, management and processing activities of sew	54.5	32.2	22.3	55.7	32.8	22.9	68.9	42.1	26.8	72.9	45.7	27.2
F. Construction	988.8	861.8	127.1	1 052.4	920.5	131.9	1 009.4	890.8	118.6	998.1	879.8	118.2
<b>3. Services sector</b>	9 658.4	4 749.7	4 908.7	9 830.1	4 876.5	4 953.6	9 819.9	4 921.8	4 898.1	9 906.1	4 953.2	4 952.9
G. Wholesale and retail trade, repair of cars, motorcycles and other m	3 041.8	1 238.7	1 803.1	3 038.8	1 295.5	1 743.4	3 108.1	1 350.0	1 758.1	3 186.3	1 353.2	1 833.1
H. Transport and storage	817.2	724.6	92.7	840.6	739.5	101.1	827.0	732.0	95.1	817.7	726.6	91.1
I. Hotels and restaurants	1 261.9	384.4	877.5	1 340.0	404.0	936.0	1 395.4	432.4	963.0	1 366.0	431.8	934.2
J. Information and communication	226.1	145.6	80.4	210.8	130.4	80.3	209.2	125.5	83.7	207.3	132.2	75.1
K. Financial intermediation, banking and insurance	241.9	108.6	133.2	248.0	112.1	135.9	250.6	107.2	143.4	248.8	101.7	147.1
L. Real estate activities	124.9	66.5	58.3	126.0	71.2	54.8	128.4	62.2	66.2	122.7	61.7	61.0
M. Technological, scientific and spicilized activities	193.1	124.8	68.3	197.4	132.0	65.4	206.6	139.5	67.2	204.4	128.4	76.0
N. Administrative activities and supporting services	161.0	102.0	59.0	158.3	95.4	63.0	148.8	94.6	54.2	174.7	107.0	67.7
O. Activities of communist party, social-political organizations, gover	867.4	601.2	266.2	897.4	615.7	281.7	869.9	610.7	259.2	883.8	626.3	257.5
O. Activities of communist party, social-political organizations, gover	867.4	601.2	266.2	897.4	615.7	281.7	869.9	610.7	259.2	883.8	626.3	257.5
P. Training and education	889.1	257.9	631.1	917.4	273.0	644.3	890.5	269.1	621.4	878.9	250.8	628.1
Q. Health and social work	289.6	106.7	182.9	270.2	98.5	171.7	277.6	99.5	178.1	290.8	107.6	183.1
R. Recreational cultural and sporting activities	161.2	74.0	87.2	163.7	76.6	87.1	159.5	74.9	84.7	166.9	77.7	89.2
S. Other service activities	403.7	202.8	200.9	412.8	212.0	200.9	375.7	209.1	166.7	369.0	210.8	158.2
T. Activities of domestic hired labourers in households which produci	111.0	10.3	100.6	109.2	3.9	105.4	95.6	3.3	92.3	103.5	10.0	93.5
U. Extra territorial organizations and bodies	1.1	0.2	0.9	1.9	0.9	1.0	7.0	1.2	5.8	1.6	1.0	0.6
<b>4. Not stated</b>	3.9	2.2	1.7	2.7	1.2	1.5	5.4	3.7	1.7	8.8	4.0	4.8

Table 10 (continue)

Unit: Thousand persons

Industry	Quarter 1 in 2012 (At 1/4/2012)			Quarter 2 in 2012 (At 1/7/2012)			Quarter 3 in 2012 (At 1/10/2012)			Quarter 4 in 2012 (At 1/1/2013)		
	Total	Male	Female	Total	Male	Female	Total	Male	Female	Total	Male	Female
<b>RURAL</b>	35 734.9	18 388.3	17 346.6	36 124.7	18 549.4	17 575.3	36 456.8	18 765.5	17 691.2	36 246.6	18 666.6	17 580.0
<b>1. Agriculture, forestry and fishery sector</b>	22 014.5	10 885.2	11 129.3	22 018.3	10 771.0	11 247.3	22 572.0	10 999.3	11 572.7	21 933.8	10 661.8	11 272.0
A. Argiculture, forestry and fishery	22 014.5	10 885.2	11 129.3	22 018.3	10 771.0	11 247.3	22 572.0	10 999.3	11 572.7	21 933.8	10 661.8	11 272.0
<b>2. Industry and construction sector</b>	6 339.9	3 965.8	2 374.2	6 674.6	4 195.8	2 478.9	6 649.8	4 203.5	2 446.3	6 898.0	4 403.2	2 494.9
B. Mining and quarrying	166.9	138.7	28.2	167.9	136.6	31.3	128.3	108.4	19.9	182.1	152.8	29.2
C. Manufacturing	3 952.6	1 848.8	2 103.8	4 142.1	1 945.3	2 196.8	4 196.4	1 969.1	2 227.4	4 181.4	1 961.8	2 219.7
D. Production and distribution of electricity, gas, steam and hot water	52.9	48.4	4.5	49.6	42.0	7.5	48.3	41.6	6.6	42.8	40.4	2.4
E. Distribution of water, management and processing activities of sew	40.6	22.4	18.2	67.0	32.3	34.7	28.5	19.0	9.4	46.0	27.6	18.4
F. Construction	2 127.0	1 907.5	219.5	2 248.1	2 039.5	208.6	2 248.3	2 065.4	182.9	2 445.7	2 220.6	225.1
<b>3. Services sector</b>	7 355.4	3 525.6	3 829.8	7 414.9	3 578.0	3 836.9	7 225.5	3 560.0	3 665.6	7 410.0	3 600.3	3 809.7
G. Wholesale and retail trade, repair of cars, motorcycles and other m	3 264.9	1 376.1	1 888.7	3 257.9	1 331.5	1 926.4	3 197.8	1 343.4	1 854.4	3 305.4	1 390.2	1 915.2
H. Transport and storage	623.9	575.4	48.5	663.2	619.1	44.1	708.0	646.3	61.8	707.6	652.8	54.8
I. Hotels and restaurants	840.1	247.2	593.0	861.1	252.0	609.1	779.9	237.3	542.6	788.9	199.3	589.6
J. Information and communication	77.7	46.3	31.3	70.3	45.4	24.9	64.6	42.7	22.0	78.5	55.2	23.3
K. Financial intermediation, banking and insurance	64.5	30.8	33.7	64.5	38.8	25.7	71.6	38.9	32.7	72.9	35.4	37.5
L. Real estate activities	25.5	15.4	10.1	27.1	17.0	10.2	21.7	11.4	10.3	24.0	11.4	12.6
M. Technological, scientific and spicilized activities	46.1	35.9	10.2	49.4	36.1	13.2	61.5	44.3	17.2	45.7	31.4	14.3
N. Administrative activities and supporting services	90.7	51.7	38.9	65.1	35.9	29.2	66.0	34.9	31.1	58.9	40.5	18.4
O. Activities of communist party, social-political organizations, gover	704.7	562.6	142.1	722.4	571.7	150.7	703.5	552.7	150.8	736.4	585.3	151.2
P. Training and education	923.8	270.2	653.6	912.0	296.9	615.1	837.6	258.0	579.6	887.0	246.6	640.4
Q. Health and social work	198.1	70.0	128.1	198.9	67.4	131.5	204.5	80.5	124.0	199.2	79.3	119.9
R. Recreational cultural and sporting activities	92.1	43.2	48.8	93.5	39.2	54.3	101.0	51.8	49.2	94.9	52.9	42.0
S. Other service activities	315.4	193.2	122.2	358.9	223.0	135.9	350.8	215.6	135.2	342.2	211.2	131.0
T. Activities of domestic hired labourers in households which produci	88.1	7.6	80.5	70.5	4.1	66.3	56.9	2.3	54.6	68.4	8.8	59.6
U. Extra territorial organizations and bodies	0.0	0.0	0.0	0.3	0.0	0.3	0.0	0.0	0.0	0.0	0.0	0.0
<b>4. Not stated</b>	25.0	11.7	13.3	16.9	4.5	12.3	9.5	2.7	6.7	4.8	1.4	3.4



**Table 11**

**AVERAGE MONTHLY EARNINGS OF WAGE WORKERS AGED 15 AND OVER BY SEX, URBAN/RURAL RESIDENCE AND SOCIO-ECONOMIC REGION, 2012**

*Unit: Thousand VND*

No	Socio-economic region	Quarter 1 in 2012 (At 1/4/2012)			Quarter 2 in 2012 (At 1/7/2012)			Quarter 3 in 2012 (At 1/10/2012)			Quarter 4 in 2012 (At 1/1/2013)		
		Total	Male	Female	Total	Male	Female	Total	Male	Female	Total	Male	Female
<b>TOTAL</b>		<b>3 905</b>	<b>4 073</b>	<b>3 667</b>	<b>3 573</b>	<b>3 764</b>	<b>3 293</b>	<b>3 766</b>	<b>3 924</b>	<b>3 532</b>	<b>3 805</b>	<b>3 952</b>	<b>3 586</b>
R1	Northern Midlands and Mountains	3 296	3 296	3 297	3 343	3 336	3 354	3 689	3 670	3 718	3 681	3 641	3 742
R2	Red River Delta (*)	3 655	3 904	3 297	3 492	3 755	3 110	3 641	3 848	3 321	3 651	3 852	3 340
R3	North and South Central Coast	3 225	3 398	2 949	3 095	3 294	2 754	3 305	3 487	2 991	3 386	3 524	3 138
R4	Central Highland	3 117	3 317	2 849	3 402	3 601	3 120	3 634	3 770	3 456	3 666	3 795	3 497
R5	Southeast (*)	4 383	4 610	4 116	3 687	3 912	3 411	4 018	4 237	3 762	4 152	4 446	3 816
R6	Mekong River Delta	2 792	2 995	2 474	2 757	2 983	2 391	2 986	3 188	2 636	3 028	3 188	2 759
R7	Ha Noi city	5 184	5 370	4 934	4 537	4 698	4 315	4 721	4 872	4 520	4 689	4 830	4 496
R8	Ho Chi Minh city	5 818	6 121	5 433	4 800	5 167	4 344	4 751	5 028	4 394	4 768	5 059	4 393
<b>URBAN</b>		<b>4 803</b>	<b>5 119</b>	<b>4 402</b>	<b>4 211</b>	<b>4 519</b>	<b>3 819</b>	<b>4 401</b>	<b>4 650</b>	<b>4 081</b>	<b>4 469</b>	<b>4 734</b>	<b>4 130</b>
R1	Northern Midlands and Mountains	3 851	4 058	3 614	3 834	4 009	3 631	4 269	4 370	4 153	4 290	4 424	4 134
R2	Red River Delta (*)	4 478	4 841	3 967	4 274	4 644	3 768	4 349	4 750	3 801	4 310	4 607	3 903
R3	North and South Central Coast	3 772	4 082	3 373	3 433	3 711	3 063	3 700	3 956	3 351	3 854	4 123	3 482
R4	Central Highland	3 616	3 903	3 249	3 551	3 823	3 184	4 075	4 243	3 834	4 221	4 441	3 946
R5	Southeast (*)	4 657	5 106	4 187	4 098	4 445	3 719	4 471	4 780	4 164	4 562	5 010	4 114
R6	Mekong River Delta	3 368	3 632	2 975	3 174	3 451	2 769	3 359	3 626	2 964	3 482	3 704	3 145
R7	Ha Noi city	6 527	7 006	5 987	5 395	5 763	4 971	5 564	5 806	5 281	5 598	5 899	5 250
R8	Ho Chi Minh city	6 056	6 340	5 680	4 982	5 342	4 515	4 938	5 183	4 607	4 935	5 203	4 574

**Table 11 (continue)**

Unit: Thousand VND

No	Socio-economic region	Quarter 1 in 2012 (At 1/4/2012)			Quarter 2 in 2012 (At 1/7/2012)			Quarter 3 in 2012 (At 1/10/2012)			Quarter 4 in 2012 (At 1/1/2013)		
		Total	Male	Female	Total	Male	Female	Total	Male	Female	Total	Male	Female
<b>RURAL</b>		<b>3 157</b>	<b>3 274</b>	<b>2 975</b>	<b>3 036</b>	<b>3 192</b>	<b>2 780</b>	<b>3 220</b>	<b>3 364</b>	<b>2 977</b>	<b>3 257</b>	<b>3 375</b>	<b>3 059</b>
R1	Northern Midlands and Mountains	2 988	2 937	3 074	3 074	3 032	3 152	3 342	3 321	3 380	3 339	3 275	3 455
R2	Red River Delta (*)	3 275	3 477	2 983	3 137	3 366	2 797	3 312	3 459	3 074	3 351	3 531	3 056
R3	North and South Central Coast	2 862	3 005	2 596	2 859	3 047	2 474	3 038	3 214	2 678	3 097	3 208	2 860
R4	Central Highland	2 700	2 845	2 497	3 265	3 405	3 057	3 223	3 296	3 134	3 167	3 237	3 070
R5	Southeast (*)	4 122	4 184	4 040	3 298	3 457	3 078	3 557	3 763	3 269	3 752	3 960	3 481
R6	Mekong River Delta	2 525	2 709	2 228	2 552	2 766	2 187	2 807	2 996	2 453	2 826	2 971	2 570
R7	Ha Noi city	3 683	3 815	3 464	3 593	3 697	3 419	3 735	3 902	3 476	3 602	3 738	3 373
R8	Ho Chi Minh city	4 529	4 793	4 254	3 834	4 114	3 557	3 750	4 070	3 434	3 873	4 175	3 572

Note: (\*) Red River Delta excluded Hanoi city and Southeast excluded Ho Chi Minh city

**Table 12**

**AVERAGE MONTHLY EARNINGS OF WAGE WORKERS AGED 15 AND OVER BY SEX, URBAN/RURAL RESIDENCE AND PROFESSIONAL AND TECHNICAL QUALIFICATION, 2012**

*Unit: Thousand VND*

No	Professional and technical qualification	Quarter 1 in 2012 (At 1/4/2012)			Quarter 2 in 2012 (At 1/7/2012)			Quarter 3 in 2012 (At 1/10/2012)			Quarter 4 in 2012 (At 1/1/2013)		
		Total	Male	Female	Total	Male	Female	Total	Male	Female	Total	Male	Female
<b>TOTAL</b>		<b>3 905</b>	<b>4 073</b>	<b>3 667</b>	<b>3 573</b>	<b>3 764</b>	<b>3 293</b>	<b>3 766</b>	<b>3 924</b>	<b>3 532</b>	<b>3 805</b>	<b>3 952</b>	<b>3 586</b>
1	No qualification	3 086	3 200	2 911	2 946	3 109	2 686	3 087	3 233	2 845	3 107	3 244	2 880
2	Vocation training	4 479	4 667	3 852	4 074	4 274	3 337	4 259	4 407	3 757	4 250	4 412	3 689
3	Secondary vocational school	3 839	4 174	3 567	3 561	3 883	3 286	3 812	4 087	3 579	3 893	4 130	3 692
4	College	4 125	4 418	3 970	3 956	4 403	3 708	4 276	4 553	4 114	4 286	4 555	4 150
5	University and over	6 729	7 265	6 081	5 651	6 107	5 102	5 939	6 440	5 362	6 042	6 546	5 462
<b>URBAN</b>		<b>4 803</b>	<b>5 119</b>	<b>4 402</b>	<b>4 211</b>	<b>4 519</b>	<b>3 819</b>	<b>4 401</b>	<b>4 650</b>	<b>4 081</b>	<b>4 469</b>	<b>4 734</b>	<b>4 130</b>
1	No qualification	3 508	3 678	3 289	3 272	3 479	2 999	3 416	3 586	3 186	3 462	3 627	3 242
2	Vocation training	5 049	5 227	4 428	4 460	4 693	3 637	4 491	4 678	3 940	4 512	4 666	4 018
3	Secondary vocational school	4 344	4 863	3 944	3 933	4 341	3 596	4 143	4 426	3 931	4 247	4 684	3 902
4	College	4 658	5 211	4 397	4 163	4 636	3 907	4 436	4 691	4 281	4 543	4 879	4 359
5	University and over	7 326	7 910	6 610	6 007	6 533	5 377	6 276	6 804	5 658	6 363	6 932	5 700
<b>RURAL</b>		<b>3 157</b>	<b>3 274</b>	<b>2 975</b>	<b>3 036</b>	<b>3 192</b>	<b>2 780</b>	<b>3 220</b>	<b>3 364</b>	<b>2 977</b>	<b>3 257</b>	<b>3 375</b>	<b>3 059</b>
1	No qualification	2 841	2 952	2 650	2 757	2 918	2 467	2 892	3 049	2 601	2 907	3 056	2 627
2	Vocation training	3 903	4 089	3 310	3 679	3 853	3 008	3 980	4 105	3 473	3 959	4 140	3 271
3	Secondary vocational school	3 358	3 554	3 190	3 183	3 434	2 961	3 506	3 810	3 217	3 569	3 658	3 488
4	College	3 720	3 891	3 620	3 770	4 200	3 526	4 124	4 416	3 960	4 062	4 245	3 976
5	University and over	4 928	5 278	4 517	4 596	4 852	4 287	4 920	5 308	4 494	5 123	5 419	4 792

Table 13

AVERAGE MONTHLY EARNING OF WAGE WORKERS AGED 15 AND ABOVE BY SEX, URBAN RURAL RESIDENCE, ECONOMIC  
SECTOR AND INDUSTRIAL SECTOR, 2012

Unit: Thousand VND

No	Economic sector/ Industrial sector	Quarter 1 in 2012 (At 1/4/2012)			Quarter 2 in 2012 (At 1/7/2012)			Quarter 3 in 2012 (At 1/10/2012)			Quarter 4 in 2012 (At 1/1/2013)		
		Total	Male	Female	Total	Male	Female	Total	Male	Female	Total	Male	Female
<b>TOTAL</b>		<b>3 905</b>	<b>4 073</b>	<b>3 667</b>	<b>3 573</b>	<b>3 764</b>	<b>3 293</b>	<b>3 766</b>	<b>3 924</b>	<b>3 532</b>	<b>3 805</b>	<b>3 952</b>	<b>3 586</b>
<b><i>Economic sector</i></b>													
1 State		4 772	5 097	4 390	4 238	4 533	3 886	4 525	4 789	4 215	4 561	4 764	4 322
2 Non- state		3 313	3 499	2 972	3 148	3 373	2 723	3 302	3 504	2 902	3 333	3 542	2 912
3 Foreign invest ment economic		4 812	5 546	4 399	4 219	4 675	3 957	4 356	4 835	4 104	4 425	4 971	4 136
<b><i>Industrial sector</i></b>													
1 Agriculture, forestry and fishing		2 618	2 769	2 363	2 450	2 673	2 045	2 521	2 753	2 085	2 593	2 853	2 126
2 Industry and construction		3 785	3 955	3 504	3 442	3 652	3 093	3 615	3 775	3 347	3 670	3 824	3 403
3 Services		4 377	4 630	4 086	4 000	4 230	3 723	4 230	4 444	3 968	4 270	4 452	4 049
<b>URBAN</b>		<b>4 803</b>	<b>5 119</b>	<b>4 402</b>	<b>4 211</b>	<b>4 519</b>	<b>3 819</b>	<b>4 401</b>	<b>4 650</b>	<b>4 081</b>	<b>4 469</b>	<b>4 734</b>	<b>4 130</b>
<b><i>Economic sector</i></b>													
1 State		5 550	6 101	4 904	4 806	5 266	4 263	5 073	5 479	4 590	5 100	5 494	4 633
2 Non- state		4 096	4 321	3 742	3 706	3 969	3 289	3 811	4 036	3 447	3 903	4 153	3 495
3 Foreign invest ment economic		5 481	6 220	5 025	4 536	5 000	4 250	4 866	5 319	4 610	4 934	5 460	4 640
<b><i>Industrial sector</i></b>													
1 Agriculture, forestry and fishing		2 708	2 978	2 084	2 912	3 206	2 240	2 940	3 291	2 147	3 129	3 492	2 304
2 Industry and construction		4 571	4 880	4 115	3 979	4 311	3 502	4 148	4 358	3 849	4 227	4 457	3 894
3 Services		5 113	5 512	4 678	4 472	4 808	4 093	4 686	5 006	4 319	4 739	5 071	4 362

Table 13 (continue)

Unit: Thousand VND

No	Economic sector/ Industrial sector	Quarter 1 in 2012 (At 1/4/2012)			Quarter 2 in 2012 (At 1/7/2012)			Quarter 3 in 2012 (At 1/10/2012)			Quarter 4 in 2012 (At 1/1/2013)		
		Total	Male	Female	Total	Male	Female	Total	Male	Female	Total	Male	Female
<b>RURAL</b>													
<i>Economic sector</i>													
1	State	3 157	3 274	2 975	3 036	3 192	2 780	3 220	3 364	2 977	3 257	3 375	3 059
2	Non- state	3 756	3 794	3 712	3 463	3 540	3 370	3 763	3 817	3 700	3 838	3 775	3 911
3	Foreign invest ment economic	2 818	3 024	2 398	2 800	3 037	2 297	2 974	3 199	2 468	2 981	3 206	2 463
<i>Industrial sector</i>													
1	Agriculture, forestry and fishing	4 107	4 744	3 782	3 840	4 244	3 630	3 749	4 198	3 530	3 873	4 399	3 612
2	Industry and construction	2 603	2 728	2 401	2 360	2 559	2 013	2 438	2 638	2 074	2 495	2 725	2 099
3	Services	3 247	3 367	3 030	3 086	3 254	2 775	3 258	3 424	2 946	3 311	3 459	3 023
		3 328	3 447	3 180	3 310	3 446	3 129	3 542	3 655	3 390	3 578	3 601	3 548

**Table 14**

**UNDEREMPLOYMENT AGED 15 AND OVER BY SEX, URBAN RURAL RESIDENCE AND SOCIO-ECONOMIC REGION, 2012**

*Unit: Thousand persons*

No	Socio-economic region	Quarter 1 in 2012 (At 1/4/2012)			Quarter 2 in 2012 (At 1/7/2012)			Quarter 3 in 2012 (At 1/10/2012)			Quarter 4 in 2012 (At 1/1/2013)		
		Total	Male	Female	Total	Male	Female	Total	Male	Female	Total	Male	Female
<b>TOTAL</b>		<b>1 494.3</b>	<b>827.9</b>	<b>666.4</b>	<b>1 174.5</b>	<b>666.5</b>	<b>508.1</b>	<b>1 368.9</b>	<b>754.4</b>	<b>614.5</b>	<b>1 326.8</b>	<b>737.4</b>	<b>589.3</b>
R1	Northern Midlands and Mountains	142.1	83.4	58.7	91.1	52.2	38.9	140.2	69.4	70.8	158.4	87.9	70.5
R2	Red River Delta (*)	266.1	121.7	144.4	256.8	127.7	129.1	252.1	128.5	123.7	214.0	122.5	91.5
R3	North and South Central Coast	362.7	198.8	163.9	237.9	129.0	108.9	324.2	182.4	141.7	378.8	208.8	170.0
R4	Central Highland	92.1	56.7	35.4	64.8	41.9	23.0	94.2	55.6	38.6	76.5	39.8	36.6
R5	Southeast (*)	99.6	58.8	40.8	49.9	28.4	21.5	53.3	26.5	26.8	43.3	28.1	15.1
R6	Mekong River Delta	467.3	280.5	186.8	427.9	260.8	167.1	451.2	262.4	188.8	424.2	236.3	187.9
R7	Ha Noi city	26.7	11.3	15.4	35.9	22.0	13.9	41.6	21.9	19.7	25.4	11.8	13.6
R8	Ho Chi Minh city	37.7	16.7	21.0	10.2	4.4	5.7	12.3	7.8	4.4	6.2	2.1	4.2
<b>URBAN</b>		<b>320.8</b>	<b>175.3</b>	<b>145.4</b>	<b>182.5</b>	<b>94.2</b>	<b>88.3</b>	<b>225.3</b>	<b>123.8</b>	<b>101.4</b>	<b>221.9</b>	<b>126.3</b>	<b>95.6</b>
R1	Northern Midlands and Mountains	21.8	12.4	9.3	12.2	7.2	5.0	12.8	7.8	5.0	10.7	6.0	4.7
R2	Red River Delta (*)	31.7	16.6	15.1	23.9	13.4	10.4	35.6	17.5	18.2	29.8	18.6	11.1
R3	North and South Central Coast	82.2	48.8	33.4	46.4	24.4	22.0	63.6	33.1	30.5	75.9	47.5	28.3
R4	Central Highland	30.4	16.0	14.3	18.3	8.3	10.1	22.7	12.3	10.4	18.4	9.4	8.9
R5	Southeast (*)	35.6	17.1	18.5	4.9	1.8	3.1	7.1	4.0	3.2	6.0	3.1	2.9
R6	Mekong River Delta	82.3	49.5	32.8	65.4	32.3	33.1	67.8	39.8	28.0	71.0	38.2	32.9
R7	Ha Noi city	5.5	2.5	3.1	5.8	3.7	2.1	5.2	2.3	2.8	4.8	1.9	2.9
R8	Ho Chi Minh city	31.4	12.4	19.0	5.6	3.1	2.6	10.5	7.1	3.4	5.3	1.6	3.7

**Table 14 (continue)**

*Unit: Thousand persons*

No	Socio-economic region	Quarter 1 in 2012 (At 1/4/2012)			Quarter 2 in 2012 (At 1/7/2012)			Quarter 3 in 2012 (At 1/10/2012)			Quarter 4 in 2012 (At 1/1/2013)		
		Total	Male	Female	Total	Male	Female	Total	Male	Female	Total	Male	Female
<b>RURAL</b>		<b>1 173.5</b>	<b>652.6</b>	<b>520.9</b>	<b>992.0</b>	<b>572.3</b>	<b>419.7</b>	<b>1 143.7</b>	<b>630.6</b>	<b>513.1</b>	<b>1 104.9</b>	<b>611.1</b>	<b>493.8</b>
R1	Northern Midlands and Mountains	120.3	70.9	49.4	78.9	45.0	33.9	127.4	61.6	65.8	147.7	81.9	65.8
R2	Red River Delta (*)	234.4	105.1	129.3	232.9	114.3	118.7	216.5	111.0	105.5	184.2	103.9	80.3
R3	North and South Central Coast	280.5	150.0	130.6	191.5	104.6	86.9	260.6	149.3	111.3	302.9	161.3	141.6
R4	Central Highland	61.8	40.7	21.1	46.5	33.6	12.9	71.5	43.3	28.2	58.1	30.4	27.7
R5	Southeast (*)	64.0	41.7	22.3	45.0	26.6	18.4	46.1	22.5	23.6	37.3	25.1	12.2
R6	Mekong River Delta	385.0	231.0	154.1	362.5	228.5	134.0	383.4	222.6	160.8	353.2	198.1	155.1
R7	Ha Noi city	21.2	8.9	12.3	30.2	18.3	11.9	36.4	19.5	16.9	20.6	10.0	10.6
R8	Ho Chi Minh city	6.3	4.3	2.0	4.5	1.4	3.1	1.8	0.8	1.0	0.9	0.5	0.4

*Note: (\*) Red River Delta excluded Hanoi city and Southeast excluded Ho Chi Minh city*

**Table 15**

UNDEREMPLOYED POPULATION AGED 15 AND OVER BY SEX, URBAN/RURAL RESIDENCE,  
ECONOMIC SECTOR AND INDUSTRIAL SECTOR, 2012

Unit: Thousand persons

No	Economic sector/Industrial sector	Quarter 1 in 2012 (At 1/4/2012)			Quarter 2 in 2012 (At 1/7/2012)			Quarter 3 in 2012 (At 1/10/2012)			Quarter 4 in 2012 (At 1/1/2013)		
		Total	Male	Female	Total	Male	Female	Total	Male	Female	Total	Male	Female
<b>TOTAL</b>		<b>1 494.3</b>	<b>827.9</b>	<b>666.4</b>	<b>1 174.5</b>	<b>666.5</b>	<b>508.1</b>	<b>1 368.9</b>	<b>754.4</b>	<b>614.5</b>	<b>1 326.8</b>	<b>737.4</b>	<b>589.3</b>
<b><i>Economic sector</i></b>													
1	State	22.0	12.3	9.7	13.6	10.0	3.6	11.6	5.8	5.7	13.0	10.9	2.2
2	Non-state	1 446.3	806.1	640.3	1 153.6	651.1	502.5	1 355.2	748.1	607.1	1 307.7	722.9	584.7
3	Foreign investment economic	22.3	9.5	12.8	1.3	1.3	0.0	2.2	0.5	1.7	3.4	0.9	2.5
4	Not stated	3.6	0.0	3.6	6.0	4.0	2.0	0.0	0.0	0.0	2.7	2.7	0.0
<b><i>Industrial sector</i></b>													
1	Agriculture, forestry and fishing	1 058.0	555.0	503.0	873.7	471.0	402.8	1 021.8	542.1	479.8	984.2	505.5	478.7
2	Industry and construction	189.4	123.8	65.6	127.3	89.7	37.6	161.7	103.8	57.9	155.4	115.3	40.1
3	Services	246.9	149.1	97.8	173.4	105.7	67.7	185.5	108.6	76.9	187.2	116.6	70.5
4	Not stated	0.0	0.0	0.0	0.0	0.0	0.0	0.0	0.0	0.0	0.0	0.0	0.0



Table 15 (continue)

Unit: Thousand persons

No	Economic sector/Industrial sector	Quarter 1 in 2012 (At 1/4/2012)			Quarter 2 in 2012 (At 1/7/2012)			Quarter 3 in 2012 (At 1/10/2012)			Quarter 4 in 2012 (At 1/1/2013)		
		Total	Male	Female	Total	Male	Female	Total	Male	Female	Total	Male	Female
<b>URBAN</b>													
<i>Economic sector</i>													
1	State	12.2	6.8	5.4	7.2	4.7	2.5	4.6	2.8	1.8	6.8	5.2	1.6
2	Non-state	286.0	159.0	127.0	172.3	87.4	84.9	220.7	121.1	99.6	213.4	120.7	92.7
3	Foreign investment economic	22.3	9.5	12.8	0.0	0.0	0.0	0.0	0.0	0.0	1.4	0.1	1.3
4	Not stated	0.2	0.0	0.2	3.0	2.1	1.0	0.0	0.0	0.0	0.3	0.3	0.0
<i>Industrial sector</i>													
1	Agriculture, forestry and fishing	108.7	57.1	51.6	73.1	33.0	40.1	98.0	47.2	50.8	91.9	45.8	46.1
2	Industry and construction	93.4	53.5	39.9	36.4	24.4	12.0	48.7	34.0	14.7	44.3	31.5	12.8
3	Services	118.7	64.7	54.0	73.0	36.7	36.3	78.6	42.7	35.9	85.7	49.0	36.7
4	Not stated	0.0	0.0	0.0	0.0	0.0	0.0	0.0	0.0	0.0	0.0	0.0	0.0
<b>RURAL</b>		<b>1 173.5</b>	<b>652.6</b>	<b>520.9</b>	<b>992.0</b>	<b>572.3</b>	<b>419.7</b>	<b>1 143.7</b>	<b>630.6</b>	<b>513.1</b>	<b>1 104.9</b>	<b>611.1</b>	<b>493.8</b>
<i>Economic sector</i>													
1	State	9.8	5.5	4.3	6.4	5.3	1.1	7.0	3.0	3.9	6.3	5.7	0.6
2	Non-state	1 160.3	647.1	513.3	981.3	563.8	417.6	1 134.5	627.0	507.5	1 094.3	602.2	492.1
3	Foreign investment economic	0.0	0.0	0.0	1.3	1.3	0.0	2.2	0.5	1.7	2.0	0.8	1.1
4	Not stated	3.4	0.0	3.4	3.0	2.0	1.1	0.0	0.0	0.0	2.4	2.4	0.0
<i>Industrial sector</i>													
1	Agriculture, forestry and fishing	949.3	497.9	451.4	800.6	438.0	362.6	923.8	494.9	429.0	892.3	459.6	432.6
2	Industry and construction	96.0	70.3	25.7	91.0	65.3	25.6	112.9	69.8	43.1	111.1	83.9	27.3
3	Services	128.2	84.4	43.8	100.5	69.0	31.4	106.9	65.9	41.0	101.5	67.7	33.9
4	Not stated	0.0	0.0	0.0	0.0	0.0	0.0	0.0	0.0	0.0	0.0	0.0	0.0

Table 16

UNEMPLOYED POPULATION AGED 15 AND OVER BY SEX, URBAN/RURAL RESIDENCE  
AND SOCIO-ECONOMIC REGION, 2012

Unit: Thousand persons

No	Socio-economic region	Quarter 1 in 2012 (At 1/4/2012)			Quarter 2 in 2012 (At 1/7/2012)			Quarter 3 in 2012 (At 1/10/2012)			Quarter 4 in 2012 (At 1/1/2013)		
		Total	Male	Female	Total	Male	Female	Total	Male	Female	Total	Male	Female
<b>WHOLE COUNTRY</b>		<b>980.6</b>	<b>466.4</b>	<b>514.1</b>	<b>882.3</b>	<b>385.0</b>	<b>497.2</b>	<b>984.0</b>	<b>439.4</b>	<b>544.6</b>	<b>857.4</b>	<b>395.8</b>	<b>461.5</b>
R1	Northern Midlands and Mountains	53.4	30.3	23.1	46.5	24.3	22.2	49.8	24.3	25.4	44.6	25.6	19.0
R2	Red River Delta (*)	130.4	74.9	55.6	125.9	71.7	54.2	128.3	73.4	54.9	122.6	61.4	61.2
R3	North and South Central Coast	219.9	114.7	105.2	192.5	89.1	103.3	249.5	111.6	138.0	223.1	108.3	114.8
R4	Central Highland	44.3	17.9	26.4	39.4	14.2	25.2	52.0	19.1	32.9	36.7	14.4	22.3
R5	Southeast (*)	82.4	43.0	39.3	77.8	31.1	46.7	59.2	28.8	30.4	56.4	20.4	36.0
R6	Mekong River Delta	208.4	70.0	138.4	197.6	55.2	142.4	211.5	68.4	143.1	190.5	73.1	117.4
R7	Ha Noi city	68.0	38.3	29.7	68.8	28.8	39.9	85.4	42.6	42.8	65.9	35.2	30.7
R8	Ho Chi Minh city	173.7	77.3	96.5	133.8	70.5	63.3	148.3	71.2	77.1	117.6	57.4	60.1
<b>URBAN</b>		<b>510.4</b>	<b>251.3</b>	<b>259.1</b>	<b>463.6</b>	<b>218.2</b>	<b>245.4</b>	<b>496.4</b>	<b>235.8</b>	<b>260.6</b>	<b>430.5</b>	<b>197.1</b>	<b>233.4</b>
R1	Northern Midlands and Mountains	27.8	14.1	13.6	23.1	12.6	10.5	26.8	14.1	12.8	18.9	9.8	9.2
R2	Red River Delta (*)	59.2	34.5	24.7	63.6	33.5	30.1	63.5	31.8	31.6	51.0	21.2	29.9
R3	North and South Central Coast	107.1	54.7	52.4	95.6	45.9	49.6	108.8	50.9	57.9	106.6	47.0	59.5
R4	Central Highland	17.3	6.7	10.6	14.5	5.6	8.9	18.2	6.0	12.1	13.7	6.5	7.2
R5	Southeast (*)	36.0	19.0	17.0	32.5	12.2	20.4	21.5	12.4	9.1	23.5	8.9	14.6
R6	Mekong River Delta	64.1	31.5	32.6	66.0	24.7	41.4	70.5	31.9	38.6	65.1	27.8	37.3
R7	Ha Noi city	43.0	23.3	19.8	49.9	23.0	27.0	54.2	27.1	27.2	43.8	21.8	22.1
R8	Ho Chi Minh city	155.8	67.5	88.3	118.4	60.9	57.5	132.9	61.6	71.4	107.8	54.1	53.7

**Table 16 (continue)**

*Unit: Thousand persons*

No	Socio-economic region	Quarter 1 in 2012 (At 1/4/2012)			Quarter 2 in 2012 (At 1/7/2012)			Quarter 3 in 2012 (At 1/10/2012)			Quarter 4 in 2012 (At 1/1/2013)		
		Total	Male	Female	Total	Male	Female	Total	Male	Female	Total	Male	Female
<b>RURAL</b>		<b>470.2</b>	<b>215.2</b>	<b>255.0</b>	<b>418.7</b>	<b>166.8</b>	<b>251.9</b>	<b>487.6</b>	<b>203.6</b>	<b>284.0</b>	<b>426.9</b>	<b>198.8</b>	<b>228.2</b>
R1	Northern Midlands and Mountains	25.6	16.1	9.5	23.3	11.7	11.7	22.9	10.3	12.7	25.7	15.9	9.8
R2	Red River Delta (*)	71.2	40.4	30.8	62.3	38.2	24.1	64.8	41.6	23.2	71.6	40.3	31.3
R3	North and South Central Coast	112.8	60.0	52.8	96.9	43.2	53.7	140.7	60.7	80.1	116.5	61.2	55.3
R4	Central Highland	27.0	11.3	15.7	25.0	8.6	16.3	33.9	13.1	20.8	23.0	7.9	15.1
R5	Southeast (*)	46.3	24.0	22.3	45.2	18.9	26.3	37.8	16.4	21.3	32.9	11.4	21.5
R6	Mekong River Delta	144.3	38.5	105.8	131.6	30.5	101.0	141.0	36.4	104.5	125.5	45.4	80.1
R7	Ha Noi city	25.0	15.1	9.9	18.9	5.9	13.0	31.2	15.5	15.7	22.0	13.4	8.6
R8	Ho Chi Minh city	17.9	9.7	8.2	15.4	9.7	5.8	15.4	9.6	5.7	9.8	3.3	6.5

*Note: (\*) Red River Delta excluded Hanoi city and Southeast excluded Ho Chi Minh city*

**Table 17**

**UNEMPLOYED POPULATION AGED 15 AND OVER BY SEX, URBAN/RURAL RESIDENCE  
AND PROFESSIONAL AND TECHNICAL QUALIFICATION, 2012**

*Unit: Thousand persons*

No	Professional and technical qualification	Quarter 1 in 2012 (At 1/4/2012)			Quarter 2 in 2012 (At 1/7/2012)			Quarter 3 in 2012 (At 1/10/2012)			Quarter 4 in 2012 (At 1/1/2013)		
		Total	Male	Female	Total	Male	Female	Total	Male	Female	Total	Male	Female
<b>TOTAL</b>		<b>980.6</b>	<b>466.4</b>	<b>514.1</b>	<b>882.3</b>	<b>385.0</b>	<b>497.2</b>	<b>984.0</b>	<b>439.4</b>	<b>544.6</b>	<b>857.4</b>	<b>395.8</b>	<b>461.5</b>
1	No qualification	716.3	323.9	392.4	631.0	261.6	369.4	678.0	291.8	386.2	595.6	280.3	315.3
2	Vocation training	61.7	50.4	11.2	56.3	42.3	13.9	69.1	48.2	20.9	61.6	43.3	18.3
3	Secondary vocational school	66.2	26.0	40.2	59.7	22.3	37.3	65.5	25.8	39.7	60.7	21.4	39.3
4	College	37.3	15.9	21.4	57.5	24.4	33.0	55.4	20.3	35.2	52.5	13.7	38.8
5	University and over	97.9	50.2	47.7	74.0	32.5	41.5	111.1	53.3	57.8	86.1	37.0	49.1
6	Not stated	1.1	0.0	1.1	3.8	1.8	2.0	4.9	0.0	4.9	0.9	0.2	0.7
<b>URBAN</b>		<b>510.4</b>	<b>251.3</b>	<b>259.1</b>	<b>463.6</b>	<b>218.2</b>	<b>245.4</b>	<b>496.4</b>	<b>235.8</b>	<b>260.6</b>	<b>430.5</b>	<b>197.1</b>	<b>233.4</b>
1	No qualification	364.6	176.5	188.1	316.1	147.8	168.3	317.5	145.1	172.3	279.3	129.6	149.7
2	Vocation training	33.5	26.7	6.9	27.4	19.3	8.1	40.4	28.7	11.7	38.3	28.1	10.2
3	Secondary vocational school	30.7	7.9	22.8	32.7	10.5	22.2	37.5	15.6	21.8	31.0	11.9	19.1
4	College	19.4	7.2	12.2	29.4	12.5	16.8	28.5	11.8	16.7	24.5	4.0	20.5
5	University and over	62.1	33.0	29.1	56.5	26.8	29.6	72.6	34.6	38.0	57.2	23.3	33.9
6	Not stated	0.0	0.0	0.0	1.6	1.3	0.3	0.0	0.0	0.0	0.2	0.2	0.0

**Table 17 (continue)**

*Unit: Thousand persons*

No	Professional and technical qualification	Quarter 1 in 2012 (At 1/4/2012)			Quarter 2 in 2012 (At 1/7/2012)			Quarter 3 in 2012 (At 1/10/2012)			Quarter 4 in 2012 (At 1/1/2013)		
		Total	Male	Female	Total	Male	Female	Total	Male	Female	Total	Male	Female
RURAL													
1	No qualification	470.2	215.2	255.0	418.7	166.8	251.9	487.6	203.6	284.0	426.9	198.8	228.2
2	Vocation training	351.7	147.4	204.3	314.9	113.8	201.1	360.6	146.7	213.9	316.3	150.6	165.6
3	Secondary vocational school	28.1	23.8	4.4	28.9	23.0	5.9	28.7	19.5	9.2	23.3	15.2	8.1
4	College	35.5	18.1	17.4	26.9	11.8	15.1	28.0	10.2	17.8	29.8	9.6	20.2
5	University and over	17.9	8.7	9.2	28.1	11.9	16.2	26.9	8.5	18.4	27.9	9.6	18.3
6	Not stated	35.8	17.2	18.6	17.6	5.7	11.9	38.5	18.7	19.8	28.9	13.7	15.2
		1.1	0.0	1.1	2.2	0.6	1.7	4.9	0.0	4.9	0.7	0.0	0.7

**Table 18**

**UNEMPLOYED POPULATION AGED 15 AND OVER BY SEX, URBAN/RURAL RESIDENCE  
AND AGE GROUP, 2012**

*Unit: Thousand persons*

Age group	Quarter 1 in 2012 (At 1/4/2012)			Quarter 2 in 2012 (At 1/7/2012)			Quarter 3 in 2012 (At 1/10/2012)			Quarter 4 in 2012 (At 1/1/2013)		
	Total	Male	Female	Total	Male	Female	Total	Male	Female	Total	Male	Female
<b>TOTAL</b>	<b>980.6</b>	<b>466.4</b>	<b>514.1</b>	<b>882.3</b>	<b>385.0</b>	<b>497.2</b>	<b>984.0</b>	<b>439.4</b>	<b>544.6</b>	<b>857.4</b>	<b>395.8</b>	<b>461.5</b>
15 - 19	168.8	91.3	77.5	143.2	65.8	77.4	166.1	83.0	83.1	119.2	65.6	53.6
20 - 24	286.5	134.4	152.1	271.7	108.0	163.7	291.3	128.7	162.6	272.9	117.9	155.0
25 - 29	164.5	68.6	95.9	165.5	72.6	93.0	175.1	77.4	97.8	145.0	55.2	89.8
30 - 34	86.4	35.3	51.1	71.3	28.1	43.2	69.3	20.6	48.7	71.9	27.5	44.4
35 - 39	61.2	22.5	38.7	45.3	19.6	25.7	53.4	17.4	36.0	44.4	20.7	23.7
40 - 44	51.8	22.1	29.7	40.0	15.0	24.9	50.2	16.8	33.4	35.9	14.7	21.2
45 - 49	58.1	25.2	32.9	40.3	20.1	20.3	42.0	15.0	27.0	50.7	17.1	33.6
50 - 54	57.8	25.8	32.1	72.5	28.0	44.5	91.7	41.0	50.7	72.2	34.5	37.8
55 - 59	40.7	39.0	1.8	30.4	27.2	3.1	39.3	36.5	2.8	41.5	40.1	1.4
60 - 64	3.5	1.7	1.9	1.1	0.4	0.7	2.7	1.0	1.7	0.6	0.4	0.1
65 and over	1.1	0.6	0.6	1.0	0.2	0.7	2.8	2.0	0.8	3.0	2.0	1.0

Table 18 (continue)

Unit: Thousand persons

Age group	Quarter 1 in 2012 (At 1/4/2012)			Quarter 2 in 2012 (At 1/7/2012)			Quarter 3 in 2012 (At 1/10/2012)			Quarter 4 in 2012 (At 1/1/2013)		
	Total	Male	Female	Total	Male	Female	Total	Male	Female	Total	Male	Female
<b>URBAN</b>	<b>510.4</b>	<b>251.3</b>	<b>259.1</b>	<b>463.6</b>	<b>218.2</b>	<b>245.4</b>	<b>496.4</b>	<b>235.8</b>	<b>260.6</b>	<b>430.5</b>	<b>197.1</b>	<b>233.4</b>
15 - 19	59.2	37.1	22.1	50.4	27.9	22.6	56.0	33.8	22.2	50.7	31.9	18.9
20 - 24	131.4	63.9	67.5	129.3	50.7	78.7	133.4	63.6	69.8	114.2	49.7	64.4
25 - 29	81.9	38.1	43.8	92.8	43.1	49.7	99.8	46.5	53.3	83.0	33.0	50.0
30 - 34	47.0	17.2	29.8	46.4	18.4	28.0	37.0	12.6	24.3	44.1	17.7	26.4
35 - 39	41.4	16.2	25.2	32.8	16.2	16.6	35.3	13.4	22.0	25.3	9.8	15.5
40 - 44	33.2	15.1	18.2	24.3	10.8	13.5	28.9	12.3	16.6	16.0	4.5	11.5
45 - 49	44.5	16.7	27.8	26.3	14.3	12.0	24.8	7.9	17.0	31.7	12.7	19.0
50 - 54	41.1	18.8	22.3	40.8	17.9	22.9	55.2	21.5	33.7	43.5	17.7	25.8
55 - 59	27.5	26.0	1.5	19.0	18.4	0.6	24.9	23.1	1.8	21.0	19.6	1.4
60 - 64	2.5	1.7	0.9	1.1	0.4	0.7	1.0	1.0	0.0	0.6	0.4	0.1
65 and over	0.7	0.6	0.1	0.4	0.2	0.2	0.1	0.1	0.0	0.5	0.1	0.4
<b>RURAL</b>	<b>470.2</b>	<b>215.2</b>	<b>255.0</b>	<b>418.7</b>	<b>166.8</b>	<b>251.9</b>	<b>487.6</b>	<b>203.6</b>	<b>284.0</b>	<b>426.9</b>	<b>198.8</b>	<b>228.2</b>
15 - 19	109.6	54.2	55.4	92.8	37.9	54.8	110.1	49.2	60.9	68.4	33.7	34.7
20 - 24	155.2	70.5	84.7	142.4	57.4	85.0	157.9	65.1	92.9	158.7	68.1	90.6
25 - 29	82.6	30.5	52.2	72.7	29.5	43.3	75.3	30.9	44.4	62.0	22.2	39.8
30 - 34	39.4	18.1	21.2	24.9	9.7	15.2	32.4	8.0	24.4	27.8	9.9	18.0
35 - 39	19.8	6.3	13.4	12.5	3.4	9.1	18.1	4.0	14.0	19.1	10.9	8.2
40 - 44	18.6	7.1	11.5	15.7	4.2	11.4	21.3	4.5	16.8	19.9	10.2	9.8
45 - 49	13.6	8.5	5.1	14.1	5.8	8.3	17.2	7.2	10.0	19.0	4.5	14.6
50 - 54	16.8	7.0	9.8	31.7	10.1	21.7	36.4	19.4	17.0	28.8	16.8	12.0
55 - 59	13.2	13.0	0.2	11.4	8.9	2.5	14.4	13.4	1.0	20.5	20.5	0.0
60 - 64	1.0	0.0	1.0	0.0	0.0	0.0	1.7	0.0	1.7	0.0	0.0	0.0
65 and over	0.5	0.0	0.5	0.6	0.0	0.6	2.7	1.9	0.8	2.5	1.9	0.6

**Table 19**

ECONOMICALLY ACTIVE STATUS OF YOUTH (15-24 YEARS OLD) BY SEX AND URBAN/RURAL RESIDENCE, 2012

Indicator	Quarter 1 in 2012 (At 1/4/2012)			Quarter 2 in 2012 (At 1/7/2012)			Quarter 3 in 2012 (At 1/10/2012)			Quarter 4 in 2012 (At 1/1/2013)		
	Total	Male	Female	Total	Male	Female	Total	Male	Female	Total	Male	Female
<b>1. Youth population (Thousand persons)</b>	<b>14 348.4</b>	<b>7 442.8</b>	<b>6 905.6</b>	<b>14 178.6</b>	<b>7 366.6</b>	<b>6 812.0</b>	<b>14 017.9</b>	<b>7 331.0</b>	<b>6 686.9</b>	<b>13 600.6</b>	<b>7 121.5</b>	<b>6 479.1</b>
Urban	4 376.6	2 138.9	2 237.6	4 405.4	2 149.2	2 256.3	4 359.6	2 181.9	2 177.7	4 294.5	2 156.0	2 138.5
Rural	9 971.9	5 303.9	4 668.0	9 773.2	5 217.5	4 555.7	9 658.3	5 149.1	4 509.2	9 306.2	4 965.5	4 340.6
<b>2. Youth employment (Thousand persons)</b>	<b>7 555.6</b>	<b>4 171.4</b>	<b>3 384.3</b>	<b>7 547.7</b>	<b>4 175.0</b>	<b>3 372.8</b>	<b>7 574.5</b>	<b>4 194.6</b>	<b>3 379.9</b>	<b>7 012.9</b>	<b>3 901.0</b>	<b>3 111.9</b>
Urban	1 805.3	896.8	908.5	1 837.5	918.4	919.1	1 801.1	915.8	885.4	1 724.7	882.9	841.9
Rural	5 750.3	3 274.6	2 475.7	5 710.3	3 256.5	2 453.7	5 773.4	3 278.9	2 494.6	5 288.1	3 018.1	2 270.0
<b>3. Youth unemployment (Thousand persons)</b>	<b>455.4</b>	<b>225.7</b>	<b>229.7</b>	<b>414.9</b>	<b>173.8</b>	<b>241.1</b>	<b>457.4</b>	<b>211.6</b>	<b>245.8</b>	<b>392.1</b>	<b>183.4</b>	<b>208.6</b>
Urban	190.6	101.1	89.6	179.8	78.5	101.2	189.4	97.4	92.0	164.9	81.6	83.3
Rural	264.7	124.6	140.1	235.1	95.3	139.8	268.0	114.3	153.8	227.2	101.8	125.3
<b>4. Youth unemployment rate (%)</b>	<b>5.68</b>	<b>5.13</b>	<b>6.36</b>	<b>5.21</b>	<b>4.00</b>	<b>6.67</b>	<b>5.70</b>	<b>4.80</b>	<b>6.78</b>	<b>5.29</b>	<b>4.49</b>	<b>6.28</b>
Urban	9.55	10.13	8.97	8.91	7.88	9.92	9.52	9.61	9.42	8.73	8.46	9.01
Rural	4.40	3.67	5.36	3.96	2.84	5.39	4.44	3.37	5.81	4.12	3.26	5.23