

2008

2008 /

" ... "

2006

© 1429 - 2008 .

:

.2008 - .2008

/ :

- 1647 . .

: (970/972) 2 242 6340

: (970/972) 2 242 6343

: diwan@pcbs.gov.ps

: <http://www.pcbs.gov.ps>



.

(PNA)

2008 (CFG)

.(SDC)

.

(CFG)

•

•

•

•

•

•

•

•

23	:
23	1.1
23	2.1
23	3.1
25	:
27	:
27	1.3
29	2.3
30	3.3
32	4.3
33	5.3
35	6.3
37	:
37	1.4
37	2.4
37	3.4
38	4.4
39	:
39	1.5
39	2.5
40	3.5
41	
43	
93	

45			:1
		2008	
46			:2
		2008	
47			:3
	2008		
48			:4
	2008		
49			:5
		2008	
50			:6
	2008		
51			:7
	2008		
52			:8
		2008	
53			:9
	2008		
54			:10
	2008		
55			:11
		2008	
56			:12
	2008		
57			:13
	2008		

58		:14
	2008	
59		:15
	2008	
60		:16
	2008	
61		:17
	2008	
62		:18
	2008	
63		:19
	2008 ()	
64		:20
	2008	
65		:21
	2008	
66		:22
	2008	
67		:23
	2008	
68		:24
	2008	
69		:25
	2008	
70		:26
	2008	

71 :27

2008

72 :28

2008

73 :29

2008

74 :30

2008

75 :31

()

2008

76 :32

()

2008

77 :33

2008

78 :34

2008

79 :35

2008

80 :36

2008

81 :37

2008

82 :38

2008

83 :39

2008

84 :40

2008

85 :41

2008

86 :42

2008

87 :43

2008

88 :44

2008

89 :45

2008

90 :46

2008

91 :47

()

2008

28							:1
					2008		
29							:2
				2008			
31							:3
			2008				
32							:4
					2008		
33							:5
			2008				
35							:6
		2008					
35							:7
					2008		

95 :1

2008 (/ /)

97 :2

2008

%23.0

%14.9 .%31.3

%23.4

%17.3

%6.6 .

%22.9

%.15.6

%48.6

%40.2

%87.8 . %98.7 (%100)

%89.0

20,176

277

129 167,147

%72.9

%46.5 .

17,609

653.9 %71.2

39,038

43.9 %74.1

1.1

()

/04/01

2008/07/01 2008

2.1

:

.()

-
-
-
-
-

()

3.1

(

•

•

•

.

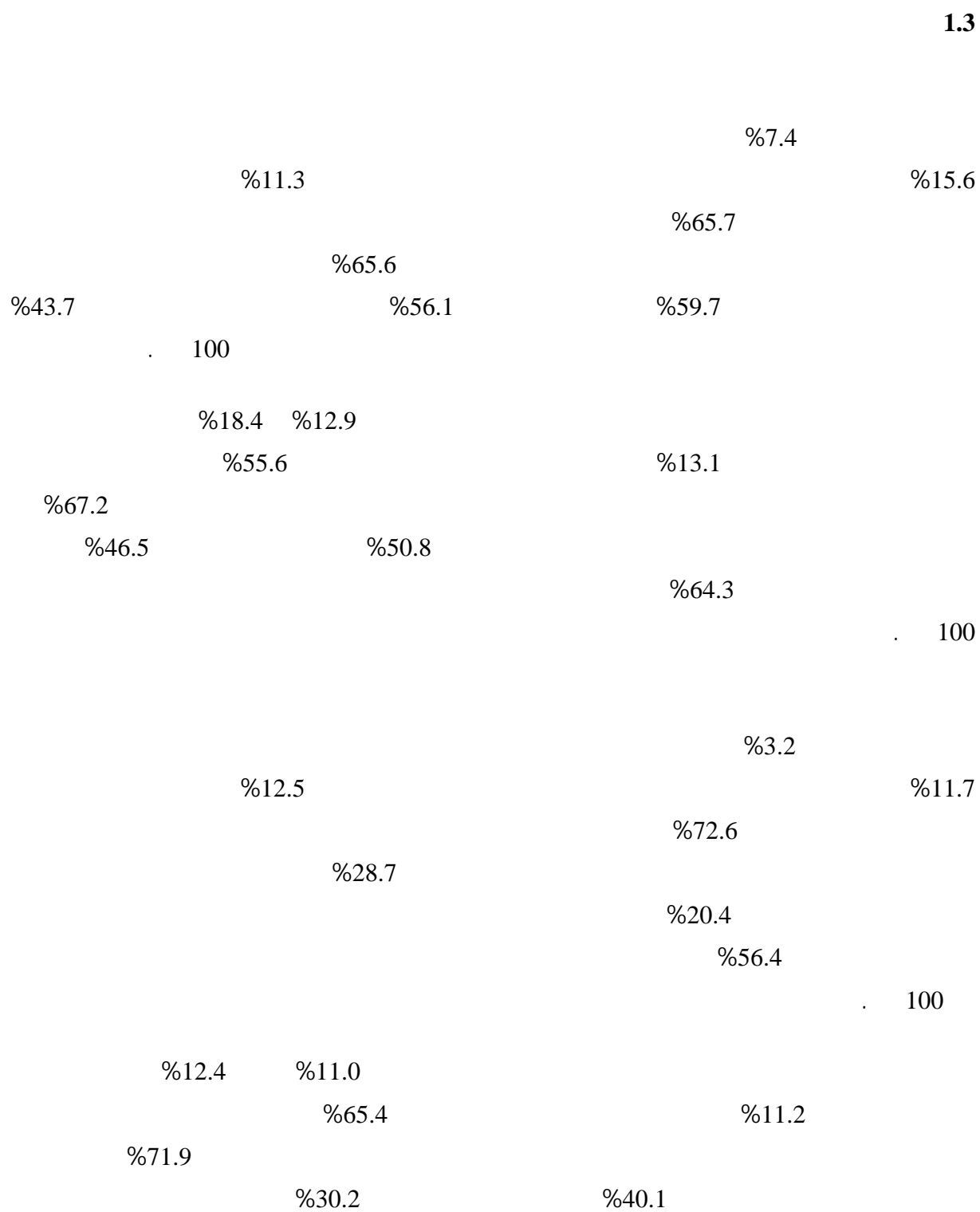
•

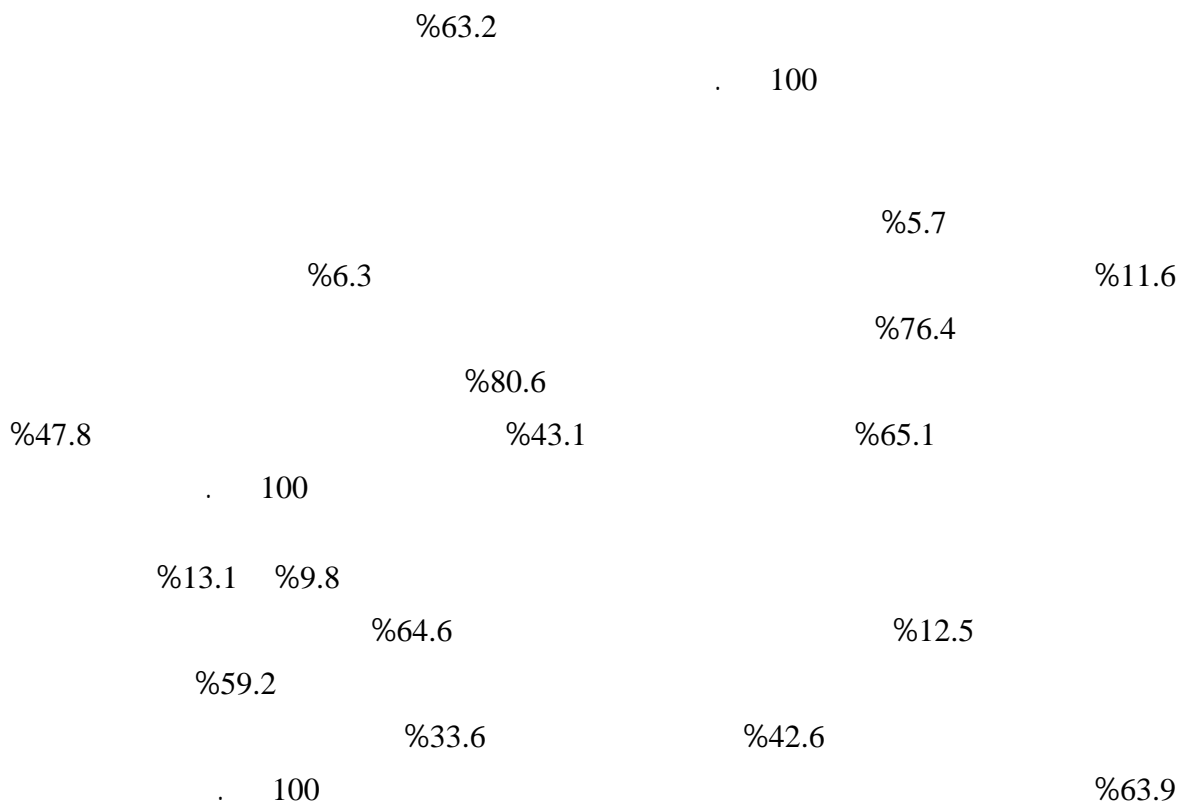
• • •

.()

•

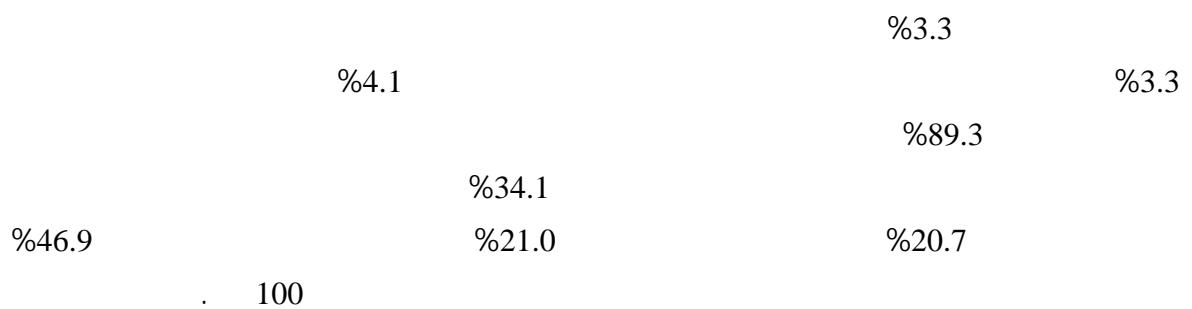
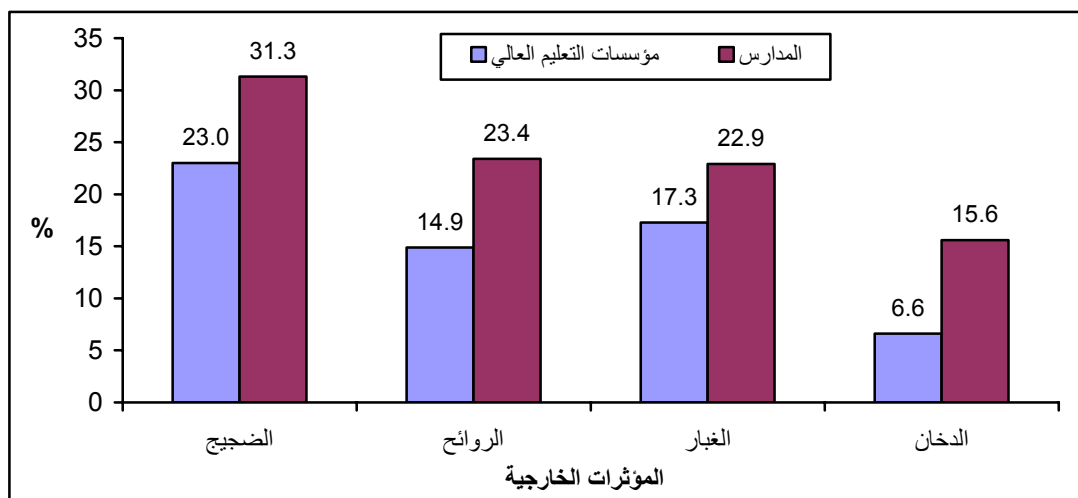
(0)





2008

:1



%9.7 %5.9

%10.5

%73.9

%23.4

%49.2

%64.1

%21.4

100

2.3

%48.6

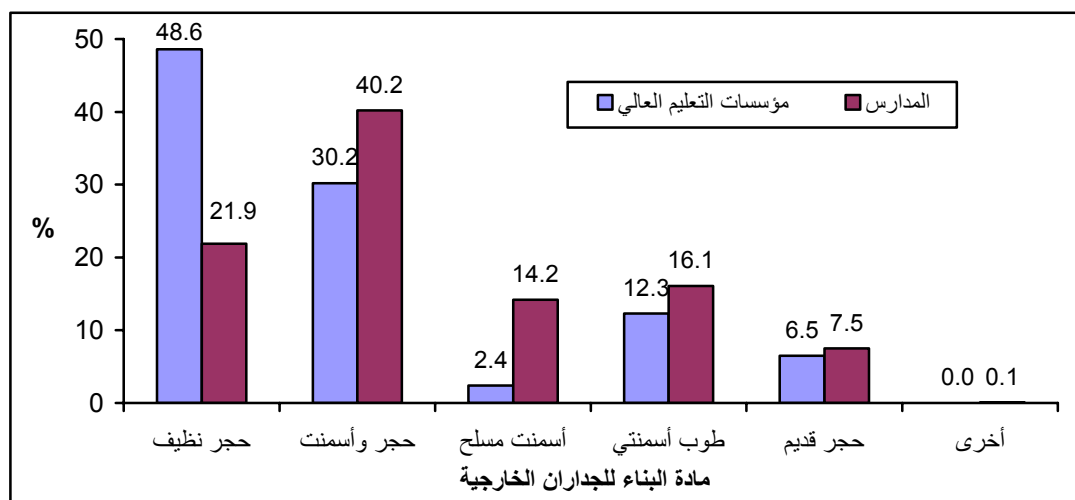
%30.2

%21.9

%40.2

:2

2008



%98.7

.(%100)

%0.3

%1.0

()

%90.8

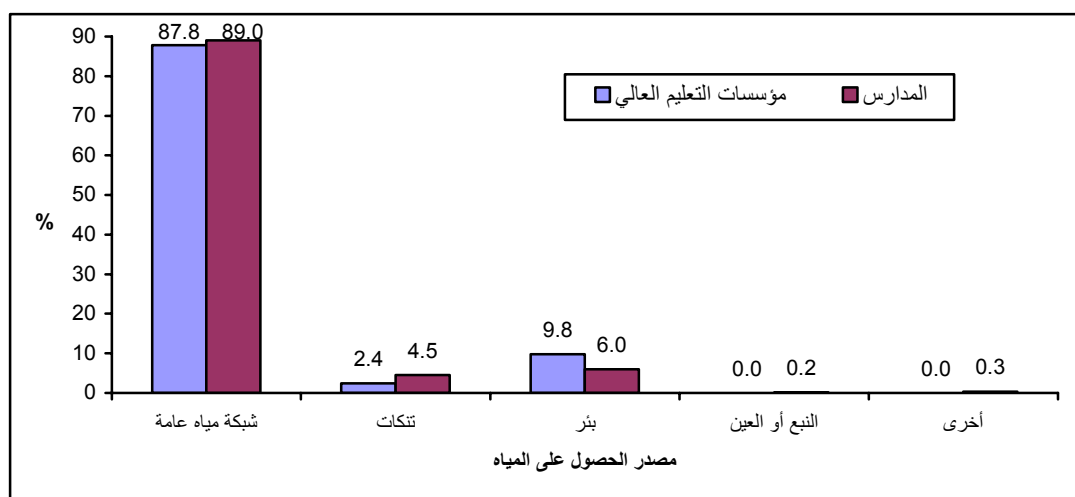
.(%100) ()

%7.6 ()
 .() %1.6 ()
 () ()
 %43.9
 %19.5 %24.0 ()
 %12.6 ()
 .(%19.4 %80.6) ()
 %46.1
 %23.3 ()
 () %25.1 ()
 () %5.5
 .(%19.5 %18.9 %25.8 %35.8)
 ()
 () %87.4
 %32.3 .()
 .() ()
 ()
 () %65.9
 %11.4 %54.5
 %10.3 .
 %2.8 %5.5 ()
 . % 1.5
3.3
 %87.8
 %9.8 %2.4
 .
 %6.0 %4.5 %89.0
 %0.2

%0.3

:3

2008



277

20,176

167,147

129

%81.2

%100

%73.5

%74.5

%73.0

%88.7

%54.4

90

1,000

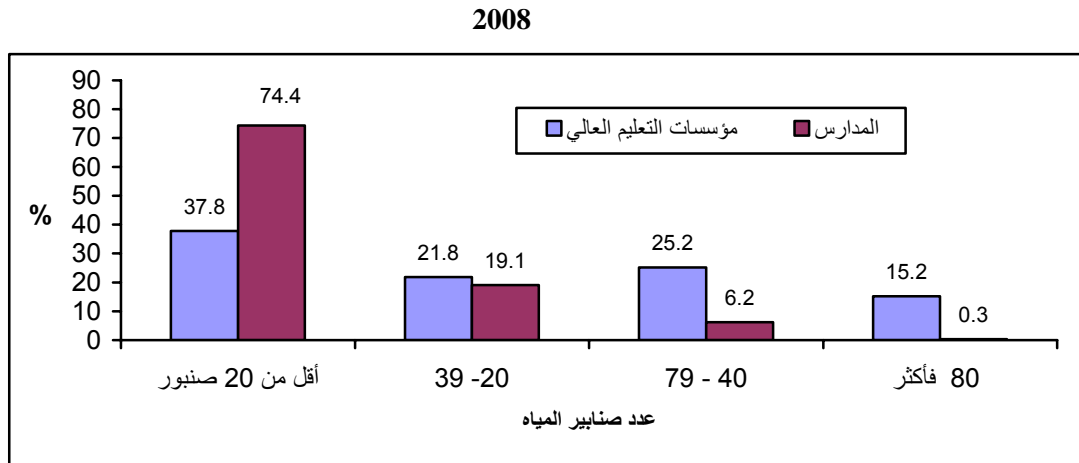
42

1,000

20 %37.8

20 %74.4

:4



%93.5

%15.9

20 %30.9

%21.0

9 %78.0

%97.6

%5.4

%15.8

4.3

%72.9

%10.8

%13.8

%2.5

%46.5

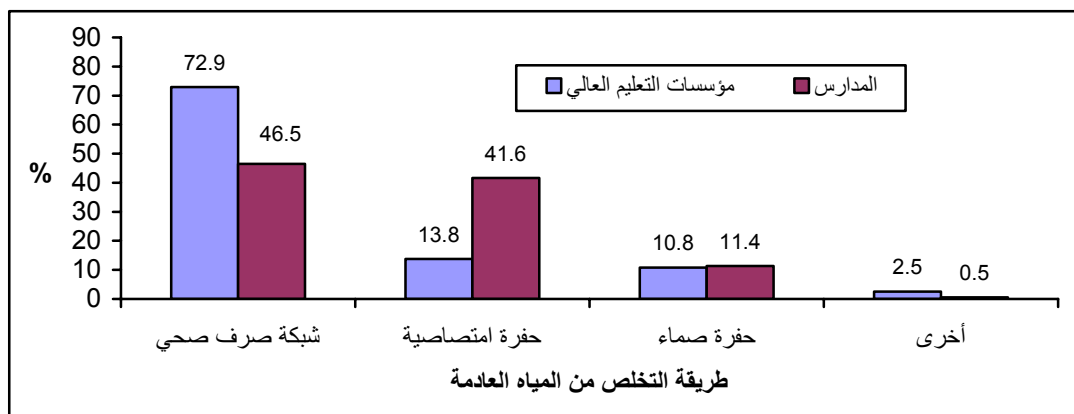
%11.4

%41.6

%0.5

:5

2008



%88.2

20

%41.2

%32.7

20

%34.0

%36.1

%61.5

45

%43.0

45

%15.9

5.3

%71.2

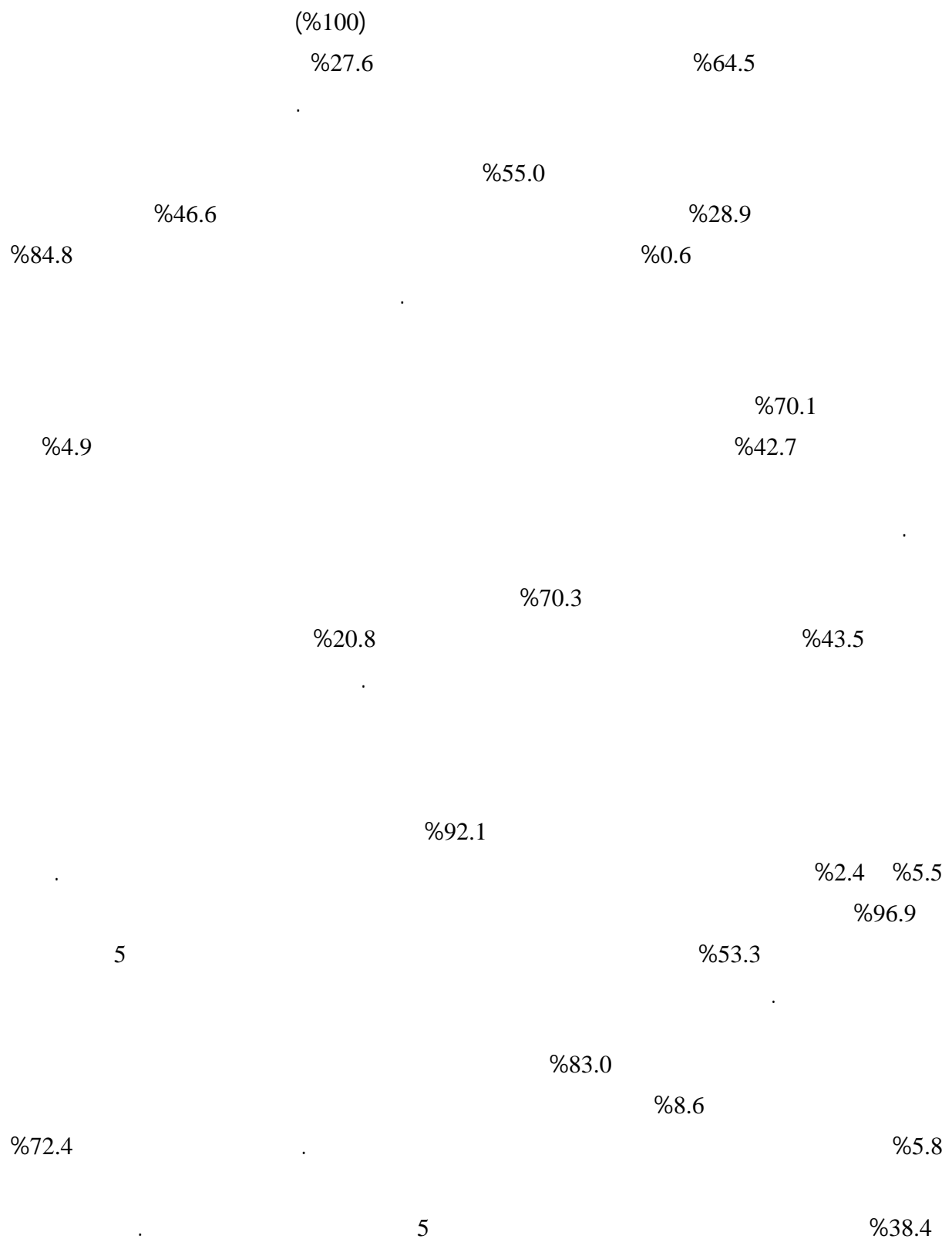
17,609

653.9

39,038

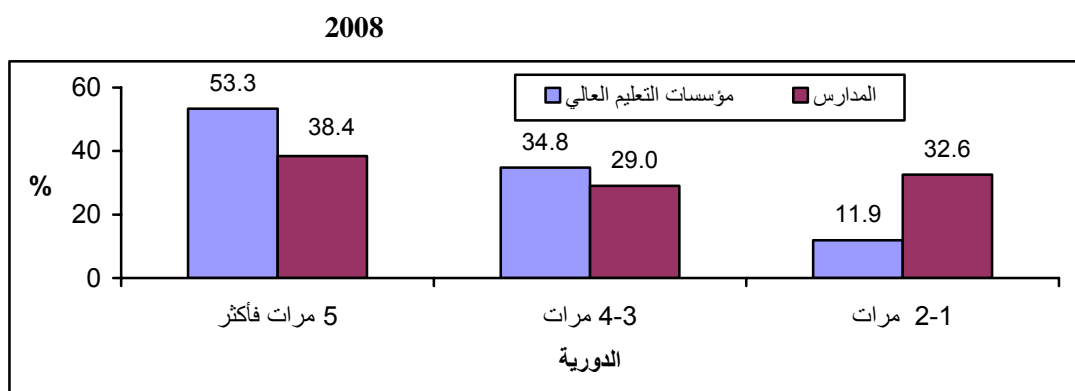
43.9

%74.9



%8.5
 %64.3
 %86.7
 %72.6
 %12.2
 %58.7

6:



6.3

60.8 ()

%33.1
 %68.2
 %6.1
 100

%43.6 ()

%0.6

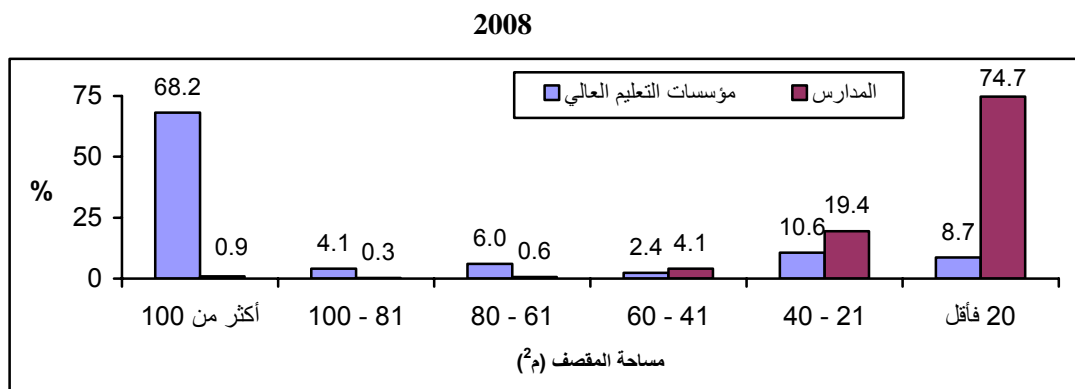
20

%90.7

%55.8

%74.7

7:



1.4

2.4

:

:

.()

.1

.2

.()

.3

.4

:

()

3.4

:

: .1

.

: .2

:

:

.

:

Microsoft Access

:

.

•

•

•

•

•

•

.(User-Friendly)

.SPSS

1.5

()

2008

.()

2.5

3.5

:

.1

.2

.

:		.1997	.1
—	.67		
			.
		.1994	.2
		—	
.	—	.1999	.3

Tables

Table 1: Main Selected Indicators about the Activity of the Education Sector Establishments in the Palestinian Territory from Environmental Sides by Sector, 2008

Indicator	2008	
Percent of Higher Education Establishments:		:
Exposure to Noise (Sometimes or Very Often)	23.0	()
Exposure to Smell (Sometimes or Very Often)	14.9	()
Exposure to Dust (Sometimes or Very Often)	17.3	()
Exposure to Smoke (Sometimes or Very Often)	6.6	()
Connected to Electricity Public Network	100.0	
Connected to Water Public Network	87.8	
Monthly Average of Quantity of Consumed water in cubic meter	20,176	
Student's share of the monthly amount of water consumed (Cubic meters / student / month)	0.3	(/ /)
Connected to Wastewater network	72.9	
Monthly Average of Generated Waste by Student (Kg / student / Day)	0.65	(/ /)
Monthly Average of Generated Waste in Educational Establishment (Kg / Day)	17,609	(/)
Percent of Schools:		:
Exposure to Noise (Sometimes or Very Often)	31.3	()
Exposure to Smell (Sometimes or Very Often)	23.4	()
Exposure to Dust (Sometimes or Very Often)	22.9	()
Exposure to Smoke (Sometimes or Very Often)	15.6	()
Connected to Electricity Public Network	98.7	
Connected to Water Public Network	89.0	
Monthly Average of Quantity of Consumed water in cubic meter	167,147	
Student's share of the monthly amount of water consumed (Cubic meters / student / month)	0.1	(/ /)
Connected to Wastewater network	46.5	
Monthly Average of Generated Waste by Student (Kg / student / Day)	0.04	(/ /)
Monthly Average of Generated Waste in Educational Establishment (Kg / Day)	39,038	(/)

2008

:2

Table 2: Percentage Distribution of Education Sector Establishments in the Palestinian Territory by Exposure to Noise, Sector, Region and Governorate, 2008

Sector\Region\Governorate	Exposure to Noise					/ /
	Total	No	Seldom	Sometimes	Very Often	
Higher Education						()
Palestinian Territory	100	65.7	11.3	15.6	7.4	
West Bank	100	69.9	11.9	9.7	8.5	
Gaza Strip	100	56.2	11.7	27.3	4.8	
General Education (Schools)						
Palestinian Territory	100	55.6	13.1	18.4	12.9	
West Bank	100	56.2	14.0	18.0	11.8	
Jenin	100	51.4	17.4	18.3	12.9	
Tubas	100	64.3	6.9	13.2	15.6	
Tulkarm	100	69.1	11.5	12.8	6.6	
Nablus	100	58.4	13.6	17.9	10.1	
Qalqiliya	100	54.0	14.1	15.1	16.8	
Salfit	100	53.3	14.4	24.0	8.3	
Ramallah and Al-Bireh	100	57.3	15.0	16.8	10.9	
Jericho and Al Aghwar	100	66.6	4.0	28.0	1.4	
Jerusalem	100	49.6	13.9	20.0	16.5	
Bethlehem	100	56.5	16.8	18.1	8.6	
Hebron	100	54.1	13.5	19.6	12.8	
Gaza Strip	100	55.2	11.3	19.7	13.8	
North Gaza	100	53.6	18.2	18.4	9.8	
Gaza	100	55.3	10.4	19.7	14.6	
Deir AL-Balah	100	66.0	7.9	20.6	5.5	
Khan Yunis	100	56.2	8.1	20.3	15.4	
Rafah	100	59.7	7.1	13.6	19.6	

2008

:3

Table 3: Percent of Education Sector Establishments Exposed to Noise Sometimes or Very Often in the Palestinian Territory by the Source of Noise, Sector, Region and Governorate, 2008

Sector\Region\Governorate	Sources of Noise													/ /
	Others	Settlements	Israeli Military Activities	Wastewater	Residential Buildings	Waste Container	Dump Site	Unpaved Roads	Industrial Activities	Commercial Activities	Construction	Queries & Stone Cutting	Main Road	
Higher Education														()
Palestinian Territory	0.0	0.0	0.0	0.0	17.9	14.4	0.0	41.5	65.6	43.4	59.7	0.0	56.1	
West Bank	0.0	0.0	0.0	0.0	26.9	20.7	0.0	17.1	0.0	47.0	61.3	0.0	64.3	
Gaza Strip	0.0	0.0	0.0	0.0	0.0	0.0	0.0	64.3	100	31.0	55.6	0.0	38.5	
General Education (Schools)														
Palestinian Territory	36.7	31.4	67.2	4.1	16.8	7.7	19.9	22.6	40.2	32.7	50.8	31.0	46.5	
West Bank	35.1	31.8	61.4	4.5	14.7	6.8	20.9	22.7	36.8	30.3	52.0	23.7	46.8	
Jenin	46.8	31.4	41.1	1.7	10.1	4.8	42.8	17.6	50.7	29.2	48.0	37.5	44.7	
Tubas	0.0	0.0	75.0	0.0	13.9	0.0	0.0	10.0	50.0	63.6	50.0	0.0	53.6	
Tulkarm	14.8	0.0	62.5	3.8	5.9	2.9	14.3	16.7	14.3	21.2	51.9	0.0	43.5	
Nablus	43.6	37.5	73.6	5.2	14.0	5.9	12.2	19.0	22.4	27.7	43.9	11.3	47.7	
Qalqiliya	27.3	33.3	60.0	6.3	18.8	10.4	28.6	21.1	75.0	33.3	33.3	25.0	42.4	
Salfit	14.3	66.7	75.0	7.4	37.0	5.7	0.0	13.3	12.5	48.0	35.7	40.0	64.0	
Ramallah and Al-Bireh	33.2	23.2	69.9	2.7	13.4	5.7	0.0	23.9	47.8	24.5	63.9	0.0	51.6	
Jericho and Al Aghwar	50.0	50.0	100	0.0	8.0	0.0	0.0	0.0	100	5.3	23.5	20.0	25.0	
Jerusalem	41.7	35.0	71.4	7.1	15.4	8.3	30.8	53.8	42.8	28.5	69.1	28.6	42.2	
Bethlehem	59.1	23.1	63.2	1.7	16.2	3.1	0.0	3.6	28.1	21.3	49.1	28.1	50.6	
Hebron	32.0	34.1	57.1	5.8	16.7	10.3	26.1	29.6	38.1	36.5	58.5	30.8	45.7	
Gaza Strip	39.5	23.5	79.6	3.5	21.1	9.5	19.2	22.3	46.0	36.6	40.7	47.7	46.1	
North Gaza	18.5	40.0	83.1	3.4	31.1	15.7	28.0	28.9	18.8	29.0	14.7	16.7	39.5	
Gaza	51.2	0.0	64.0	6.3	21.9	11.6	17.7	24.8	51.7	31.2	48.4	65.5	51.9	
Deir AL-Balah	30.4	0.0	100	0.0	11.9	9.0	0.0	8.8	39.9	51.2	0.0	0.0	36.8	
Khan Yunis	36.2	0.0	93.8	0.0	13.8	3.9	11.6	16.5	36.3	35.0	100	40.9	41.4	
Rafah	12.4	0.0	83.5	0.0	24.6	0.0	19.1	16.7	55.5	61.1	17.9	60.4	47.7	

2008

:4

Table 4: Percentage Distribution of Education Sector Establishments in the Palestinian Territory by the Distance Between the Source of Noise and Educational Establishment, Sector, Region and Governorate, 2008

Sector\Region\Governorate	The Distance Between the Source of Noise and Educational Establishment					/ /
	Total	500 More than 500 Meters	500 - 251	250 - 100	100 Less than 100 Meters	
Higher Education						()
Palestinian Territory	100	9.6	31.1	15.6	43.7	
West Bank	100	15.4	28.1	20.0	36.5	
Gaza Strip	100	2.1	19.3	15.8	62.8	
General Education (Schools)						
Palestinian Territory	100	9.5	10.8	15.4	64.3	
West Bank	100	8.9	12.3	16.1	62.7	
Jenin	100	11.2	12.3	11.8	64.7	
Tubas	100	10.6	9.6	15.5	64.3	
Tulkarm	100	15.6	15.2	20.3	48.9	
Nablus	100	13.9	11.4	13.9	60.8	
Qalqiliya	100	11.8	14.4	15.1	58.7	
Salfit	100	7.4	16.5	16.3	59.8	
Ramallah and Al-Bireh	100	7.4	8.9	15.4	68.3	
Jericho and Al Aghwar	100	4.6	14.0	29.4	52.0	
Jerusalem	100	8.9	11.4	16.2	63.5	
Bethlehem	100	5.3	8.4	11.9	74.4	
Hebron	100	6.3	13.9	18.9	60.9	
Gaza Strip	100	12.4	7.1	12.9	67.6	
North Gaza	100	12.5	13.1	19.1	55.3	
Gaza	100	13.8	6.1	13.2	66.9	
Deir AL-Balah	100	10.0	6.0	7.5	76.5	
Khan Yunis	100	7.1	4.5	9.7	78.7	
Rafah	100	8.3	5.1	12.8	73.8	

2008

:5

Table 5: Percentage Distribution of Education Sector Establishments in the Palestinian Territory by Exposure to Smell, Sector, Region and Governorate, 2008

Sector\Region\Governorate	Exposure to Smell					/ /
	Total	No	Seldom	Sometimes	Very Often	
Higher Education						()
Palestinian Territory	100	72.6	12.5	11.7	3.2	
West Bank	100	76.3	14.5	5.4	3.8	
Gaza Strip	100	66.0	11.0	20.7	2.3	
General Education (Schools)						
Palestinian Territory	100	65.4	11.2	12.4	11.0	
West Bank	100	66.9	10.9	12.6	9.6	
Jenin	100	64.1	10.3	15.5	10.1	
Tubas	100	72.0	14.1	6.8	7.1	
Tulkarm	100	69.5	9.3	13.0	8.2	
Nablus	100	69.3	11.9	8.8	10.0	
Qalqiliya	100	72.4	8.1	13.5	6.0	
Salfit	100	70.6	9.2	13.0	7.2	
Ramallah and Al-Bireh	100	69.6	10.4	11.9	8.1	
Jericho and Al Aghwar	100	82.0	8.4	9.6	0.0	
Jerusalem	100	64.6	11.6	12.0	11.8	
Bethlehem	100	62.9	13.0	15.7	8.4	
Hebron	100	63.6	10.8	13.9	11.7	
Gaza Strip	100	63.7	11.7	12.0	12.6	
North Gaza	100	58.4	14.4	14.6	12.6	
Gaza	100	63.1	11.9	10.1	14.9	
Deir AL-Balah	100	68.9	10.8	19.7	0.6	
Khan Yunis	100	63.3	8.1	17.9	10.7	
Rafah	100	68.7	3.6	14.6	13.1	

2008

:6

Table 6: Percent of Education Sector Establishments Exposed to Smell Sometimes or Very Often in the Palestinian Territory by the Source of Smell, Sector, Region and Governorate, 2008

Sector\Region\Governorate	Sources of Smell													/	/
	Others	Settlements	Israeli Military Activities	Wastewater	Residential Buildings	Waste Container	Dump Site	Unpaved Roads	Industrial Activities	Commercial Activities	Construction	Queries & Stone Cutting	Main Road		
Higher Education															
Palestinian Territory	69.0	0.0	0.0	20.4	6.8	28.7	0.0	18.4	0.0	7.0	18.6	0.0	23.6		
West Bank	0.0	0.0	0.0	29.4	6.4	14.0	0.0	0.0	0.0	9.1	25.8	0.0	34.5		
Gaza Strip	100	0.0	0.0	0.0	7.7	62.9	0.0	35.7	0.0	0.0	0.0	0.0	0.0		
General Education (Schools)														()
Palestinian Territory	32.9	8.6	13.7	30.2	12.5	40.1	71.9	13.7	25.1	18.5	11.3	9.7	15.1		
West Bank	39.2	9.1	15.2	25.2	12.0	32.4	67.7	12.7	22.2	18.4	11.4	8.2	14.6		
Jenin	37.6	7.4	13.4	22.6	10.6	24.2	85.7	7.8	30.8	20.8	20.8	37.5	12.5		
Tubas	0.0	0.0	25.0	7.7	8.3	23.8	0.0	0.0	50.0	27.3	0.0	0.0	10.7		
Tulkarm	51.9	0.0	18.8	18.9	9.2	24.3	85.7	4.2	28.6	15.2	7.4	0.0	11.1		
Nablus	41.0	6.2	6.6	22.1	12.9	32.6	48.9	9.5	22.4	18.3	9.3	0.0	13.3		
Qalqiliya	18.2	16.7	20.0	15.6	11.6	41.7	42.9	10.5	37.5	16.7	11.1	0.0	12.1		
Salfit	28.6	16.7	0.0	40.7	9.3	62.9	50.0	6.7	0.0	20.0	0.0	0.0	28.0		
Ramallah and Al-Bireh	49.2	4.4	37.6	26.1	11.2	21.5	42.4	15.9	13.1	12.0	10.3	0.0	16.6		
Jericho and Al Aghwar	20.0	25.0	0.0	0.0	4.0	20.0	50.0	0.0	0.0	5.3	0.0	0.0	0.0		
Jerusalem	24.9	10.0	19.0	33.2	8.3	35.3	61.6	34.6	19.0	19.0	11.5	14.2	17.7		
Bethlehem	34.5	0.0	8.4	25.7	16.7	37.0	100	8.1	19.4	26.0	18.0	0.0	19.2		
Hebron	49.9	11.4	12.5	27.4	14.7	36.0	78.3	16.6	22.5	19.0	15.6	15.4	13.7		
Gaza Strip	21.7	0.0	10.5	40.6	13.6	54.8	74.6	15.0	30.2	18.8	10.8	13.2	16.0		
North Gaza	27.8	0.0	16.2	67.3	14.9	65.3	89.4	17.3	0.0	24.4	0.0	16.7	14.4		
Gaza	17.7	0.0	15.3	38.7	13.4	56.7	73.0	19.0	32.7	13.4	6.6	18.7	19.4		
Deir AL-Balah	60.7	0.0	0.0	10.0	10.8	37.3	33.3	3.4	43.4	11.3	0.0	0.0	12.3		
Khan Yunis	12.5	0.0	0.0	44.9	10.4	50.7	46.5	9.9	9.1	32.3	100	11.4	15.1		
Rafah	24.8	0.0	0.0	30.9	20.8	62.7	78.7	6.6	55.5	23.9	17.9	0.0	9.6		

2008

:7

Table 7: Percentage Distribution of Education Sector Establishments in the Palestinian Territory by the Distance Between the Source of Smell and Educational Establishment, Sector, Region and Governorate, 2008

Sector\Region\Governorate	The Distance Between the Source of Smell and Educational Establishment					/ /
	Total	500 More than 500 Meters	500 - 251	250 - 100	100 Less than 100 Meters	
Higher Education						()
Palestinian Territory	100	14.2	17.1	12.3	56.4	
West Bank	100	22.2	9.4	16.7	51.7	
Gaza Strip	100	4.0	27.2	7.6	61.2	
General Education (Schools)						
Palestinian Territory	100	9.7	11.6	15.5	63.2	
West Bank	100	9.9	13.1	15.7	61.3	
Jenin	100	14.5	10.8	16.6	58.1	
Tubas	100	0.0	12.1	10.4	77.5	
Tulkarm	100	17.8	18.2	14.0	50.0	
Nablus	100	10.5	9.3	15.6	64.6	
Qalqiliya	100	11.2	17.6	14.5	56.7	
Salfit	100	8.1	22.5	14.9	54.5	
Ramallah and Al-Bireh	100	5.2	8.3	19.2	67.3	
Jericho and Al Aghwar	100	8.3	13.2	34.2	44.3	
Jerusalem	100	9.7	11.7	12.6	66.0	
Bethlehem	100	6.6	8.9	13.1	71.4	
Hebron	100	7.4	16.9	16.6	59.1	
Gaza Strip	100	9.5	7.7	14.0	68.8	
North Gaza	100	11.7	15.2	17.6	55.5	
Gaza	100	5.8	6.9	15.2	72.1	
Deir AL-Balah	100	1.0	8.3	6.3	84.4	
Khan Yunis	100	6.9	4.7	12.3	76.1	
Rafah	100	9.1	3.1	13.5	74.3	

2008

:8

Table 8: Percentage Distribution of Education Sector Establishments in the Palestinian Territory by Exposure to Dust, Sector, Region and Governorate, 2008

Sector\Region\Governorate	Exposure to Dust					/ /
	Total	No	Seldom	Sometimes	Very Often	
Higher Education						()
Palestinian Territory	100	76.4	6.3	11.6	5.7	
West Bank	100	79.9	6.7	7.2	6.2	
Gaza Strip	100	64.6	6.8	23.8	4.8	
General Education (Schools)						
Palestinian Territory	100	64.6	12.5	13.1	9.8	
West Bank	100	66.1	11.4	13.3	9.2	
Jenin	100	61.5	14.9	12.0	11.6	
Tubas	100	64.0	4.5	21.5	10.0	
Tulkarm	100	72.1	8.4	13.3	6.2	
Nablus	100	66.1	11.1	15.8	7.0	
Qalqiliya	100	65.1	13.8	11.6	9.5	
Salfit	100	73.2	11.1	12.1	3.6	
Ramallah and Al-Bireh	100	68.8	14.4	10.0	6.8	
Jericho and Al Aghwar	100	67.1	2.9	29.2	0.8	
Jerusalem	100	64.0	11.4	10.3	14.3	
Bethlehem	100	65.4	13.6	15.3	5.7	
Hebron	100	65.4	9.7	13.7	11.2	
Gaza Strip	100	63.5	14.2	12.1	10.2	
North Gaza	100	60.5	17.0	14.8	7.7	
Gaza	100	62.2	14.7	9.2	13.9	
Deir AL-Balah	100	72.1	14.3	12.2	1.4	
Khan Yunis	100	64.2	6.8	21.4	7.6	
Rafah	100	69.5	8.3	14.8	7.4	

2008

:9

Table 9: Percent of Education Sector Establishments Exposed to Dust Sometimes or Very Often in the Palestinian Territory by the Source of Dust, Sector, Region and Governorate, 2008

Sector\Region\Governorate	Sources of Dust													/	/
	Others	Settlements	Israeli Military Activities	Wastewater	Residential Buildings	Waste Container	Dump Site	Unpaved Roads	Industrial Activities	Commercial Activities	Construction	Queries & Stone Cutting	Main Road		
Higher Education															
Palestinian Territory	0.0	0.0	0.0	0.0	0.0	2.8	0.0	80.6	32.8	0.0	65.1	0.0	43.1		
West Bank	0.0	0.0	0.0	0.0	0.0	4.0	0.0	60.0	0.0	0.0	51.6	0.0	59.5		
Gaza Strip	0.0	0.0	0.0	0.0	0.0	0.0	0.0	100	50.0	0.0	100	0.0	7.7		
General Education (Schools)														()	
Palestinian Territory	17.5	10.3	22.8	2.9	4.3	10.8	36.0	59.2	19.3	11.2	42.6	33.6	27.7		
West Bank	20.4	10.9	18.8	2.9	4.5	7.6	34.5	60.1	16.4	10.5	44.1	33.0	28.4		
Jenin	27.2	0.0	13.4	1.7	1.5	4.8	28.6	62.5	18.5	2.6	42.8	75.0	27.7		
Tubas	100	0.0	25.0	0.0	5.6	0.0	0.0	60.0	50.0	27.3	50.0	0.0	28.6		
Tulkarm	11.1	0.0	31.3	3.8	3.4	7.1	14.3	62.5	7.1	18.2	44.4	25.0	25.0		
Nablus	36.1	6.2	13.2	2.6	3.2	7.4	36.7	69.3	11.2	4.0	44.7	34.0	28.3		
Qalqiliya	18.2	22.2	30.0	0.0	2.9	8.3	28.6	68.4	12.5	10.0	27.8	25.0	21.2		
Salfit	28.6	16.7	0.0	3.7	5.6	5.7	0.0	46.7	0.0	8.0	28.6	20.0	40.0		
Ramallah and Al-Bireh	16.6	4.4	15.0	1.3	2.5	3.2	42.4	41.8	6.5	14.7	38.5	0.0	30.9		
Jericho and Al Aghwar	20.0	25.0	100	0.0	0.0	0.0	50.0	42.9	100	0.0	23.5	20.0	8.3		
Jerusalem	8.4	15.0	38.0	7.1	7.1	12.8	38.5	73.1	14.3	7.9	53.7	14.2	28.8		
Bethlehem	16.4	15.4	16.9	3.3	9.1	4.7	39.9	44.5	0.0	16.6	41.5	28.1	36.9		
Hebron	18.1	11.4	8.9	3.2	5.7	10.7	39.2	62.0	25.4	13.1	57.2	42.3	26.8		
Gaza Strip	12.4	0.0	31.1	3.0	3.8	17.0	36.9	58.1	24.4	12.4	29.8	35.1	26.4		
North Gaza	0.0	0.0	43.0	1.7	4.3	16.7	36.3	49.7	35.9	6.0	44.1	33.3	20.9		
Gaza	12.8	0.0	25.6	5.9	4.8	19.6	32.1	67.7	26.7	13.6	24.3	37.4	30.3		
Deir AL-Balah	30.4	0.0	24.0	0.0	1.1	4.4	0.0	47.9	0.0	16.3	0.0	0.0	25.3		
Khan Yunis	6.3	0.0	37.1	0.0	1.5	24.1	23.3	49.0	36.3	12.6	100	29.5	28.2		
Rafah	24.8	0.0	0.0	0.0	5.8	0.0	64.3	50.0	11.0	14.9	17.9	60.4	17.0		

2008

:10

Table 10: Percentage Distribution of Education Sector Establishments in the Palestinian Territory by the Distance Between the Source of Dust and Educational Establishment, Sector, Region and Governorate, 2008

Sector\Region\Governorate	The Distance Between the Source of Dust and Educational Establishment					/ /
	Total	500 More than 500 Meters	500 - 251	250 - 100	100 Less than 100 Meters	
Higher Education						()
Palestinian Territory	100	10.5	26.1	15.6	47.8	
West Bank	100	18.2	24.8	15.9	41.1	
Gaza Strip	100	2.7	20.2	16.6	60.5	
General Education (Schools)						
Palestinian Territory	100	9.8	10.5	15.8	63.9	
West Bank	100	10.0	11.8	16.1	62.1	
Jenin	100	14.5	11.1	12.8	61.6	
Tubas	100	9.1	5.2	10.9	74.8	
Tulkarm	100	15.8	19.1	13.4	51.7	
Nablus	100	12.3	10.9	16.7	60.1	
Qalqiliya	100	14.7	12.3	15.5	57.5	
Salfit	100	7.6	21.0	12.1	59.3	
Ramallah and Al-Bireh	100	3.1	7.5	21.6	67.8	
Jericho and Al Aghwar	100	8.7	16.0	24.7	50.6	
Jerusalem	100	9.1	11.9	12.1	66.9	
Bethlehem	100	4.8	7.0	15.5	72.7	
Hebron	100	8.6	12.4	19.7	59.3	
Gaza Strip	100	10.6	7.9	13.3	68.2	
North Gaza	100	10.3	17.7	20.8	51.2	
Gaza	100	6.5	5.8	14.4	73.3	
Deir AL-Balah	100	10.5	6.0	6.3	77.2	
Khan Yunis	100	8.3	3.5	12.4	75.8	
Rafah	100	0.0	5.8	9.2	85.0	

2008

:11

Table 11: Percentage Distribution of Education Sector Establishments in the Palestinian Territory by Exposure to Smoke, Sector, Region and Governorate, 2008

Sector\Region\Governorate	Exposure to Smoke					/ /
	Total	No	Seldom	Sometimes	Very Often	
Higher Education						()
Palestinian Territory	100	89.3	4.1	3.3	3.3	
West Bank	100	87.7	3.3	3.5	5.5	
Gaza Strip	100	88.8	6.2	4.1	0.9	
General Education (Schools)						
Palestinian Territory	100	73.9	10.5	9.7	5.9	
West Bank	100	75.1	9.7	9.7	5.5	
Jenin	100	76.4	9.5	8.5	5.6	
Tubas	100	76.1	12.6	5.8	5.5	
Tulkarm	100	75.3	8.6	12.9	3.2	
Nablus	100	75.3	11.4	8.1	5.2	
Qalqiliya	100	78.8	9.7	6.5	5.0	
Salfit	100	84.5	7.4	7.3	0.8	
Ramallah and Al-Bireh	100	75.0	8.7	9.5	6.8	
Jericho and Al Aghwar	100	82.0	2.2	15.8	0.0	
Jerusalem	100	71.4	9.7	10.3	8.6	
Bethlehem	100	78.0	10.1	10.5	1.4	
Hebron	100	72.1	10.1	11.5	6.3	
Gaza Strip	100	72.2	11.3	10.0	6.5	
North Gaza	100	70.7	14.4	11.3	3.6	
Gaza	100	70.6	10.7	8.9	9.8	
Deir AL-Balah	100	76.6	16.5	6.8	0.1	
Khan Yunis	100	71.1	6.5	19.2	3.2	
Rafah	100	84.8	1.9	8.4	4.9	

2008

:12

Table 12: Percent of Education Sector Establishments Exposed to Smoke Sometimes or Very Often in the Palestinian Territory by the Source of Smoke, Sector, Region and Governorate, 2008

Sector\Region\Governorate	Sources of Smoke													/ /
	Others	Settlements	Israeli Military Activities	Wastewater	Residential Buildings	Waste Container	Dump Site	Unpaved Roads	Industrial Activities	Commercial Activities	Construction	Queries & Stone Cutting	Main Road	
Higher Education														()
Palestinian Territory	0.0	0.0	0.0	0.0	2.6	21.0	0.0	20.7	0.0	0.0	7.0	0.0	34.1	
West Bank	0.0	0.0	0.0	0.0	3.8	14.0	0.0	42.9	0.0	0.0	9.7	0.0	46.4	
Gaza Strip	0.0	0.0	0.0	0.0	0.0	37.1	0.0	0.0	0.0	0.0	0.0	0.0	7.7	
General Education (Schools)														
Palestinian Territory	15.4	8.1	21.4	2.1	5.8	23.4	49.2	13.4	15.6	8.6	10.0	11.5	18.1	
West Bank	19.6	8.5	18.8	1.9	5.8	17.3	55.4	12.5	13.5	8.7	10.1	7.2	18.0	
Jenin	32.4	0.0	13.4	0.0	4.0	12.2	42.8	5.9	12.3	7.8	15.6	25.0	11.8	
Tubas	0.0	0.0	25.0	0.0	5.6	4.8	0.0	0.0	50.0	18.2	0.0	0.0	21.4	
Tulkarm	22.2	0.0	37.5	3.8	5.9	21.4	57.1	16.7	14.3	9.1	7.4	0.0	13.9	
Nablus	19.4	12.5	19.8	2.6	4.9	19.0	36.7	18.0	11.2	5.4	5.1	0.0	19.3	
Qalqiliya	9.1	5.6	20.0	0.0	5.8	22.9	28.6	10.5	12.5	13.3	11.1	0.0	10.6	
Salfit	28.6	16.7	0.0	0.0	5.6	17.1	0.0	6.7	0.0	4.0	7.1	0.0	20.0	
Ramallah and Al-Bireh	22.1	8.7	37.6	0.0	4.5	12.1	56.6	8.9	15.1	9.8	11.4	0.0	25.0	
Jericho and Al Aghwar	20.0	25.0	100	0.0	0.0	10.0	50.0	0.0	0.0	0.0	0.0	0.0	0.0	
Jerusalem	8.4	10.0	23.7	2.4	4.7	24.1	61.6	30.7	14.3	9.5	23.0	14.2	19.2	
Bethlehem	0.0	7.7	8.4	0.0	7.4	13.8	59.9	15.4	0.0	15.9	3.8	0.0	22.1	
Hebron	23.7	9.1	12.5	3.7	8.0	18.5	74.0	11.1	16.9	8.0	13.0	15.4	18.6	
Gaza Strip	7.8	0.0	26.8	2.6	5.8	34.9	45.3	14.4	19.4	8.5	9.5	21.6	18.1	
North Gaza	0.0	0.0	43.7	1.7	3.6	42.8	31.8	12.6	9.4	6.0	14.7	16.7	11.0	
Gaza	10.4	0.0	20.5	5.1	8.5	35.9	47.3	22.2	24.1	7.8	4.5	37.4	18.8	
Deir AL-Balah	0.0	0.0	19.0	0.0	2.8	15.9	0.0	0.0	0.0	11.3	0.0	0.0	26.5	
Khan Yunis	12.5	0.0	24.7	0.0	2.9	42.3	23.3	2.1	27.2	7.1	100	11.4	15.1	
Rafah	0.0	0.0	0.0	0.0	5.8	17.9	71.5	16.7	11.0	14.9	0.0	0.0	21.6	

2008

:13

Table 13: Percentage Distribution of Education Sector Establishments in the Palestinian Territory by the Distance Between the Source of Smoke and Educational Establishment, Sector, Region and Governorate, 2008

Sector\Region\Governorate	The Distance Between the Source of Smoke and Educational Establishment					/ /
	Total	500 More than 500 Meters	500 - 251	250 - 100	100 Less than 100 Meters	
Higher Education						()
Palestinian Territory	100	11.7	29.7	11.7	46.9	
West Bank	100	18.2	24.9	15.0	41.9	
Gaza Strip	100	4.0	27.1	7.7	61.2	
General Education (Schools)						
Palestinian Territory	100	10.0	11.3	14.6	64.1	
West Bank	100	10.6	13.3	14.6	61.5	
Jenin	100	11.5	11.8	10.0	66.7	
Tubas	100	11.1	5.3	15.5	68.1	
Tulkarm	100	18.5	12.0	14.0	55.5	
Nablus	100	11.8	10.8	18.0	59.4	
Qalqiliya	100	7.7	17.7	13.4	61.2	
Salfit	100	9.8	22.0	12.5	55.7	
Ramallah and Al-Bireh	100	9.2	6.5	17.2	67.1	
Jericho and Al Aghwar	100	12.1	12.2	37.1	38.6	
Jerusalem	100	7.0	17.7	10.2	65.1	
Bethlehem	100	3.0	11.3	11.6	74.1	
Hebron	100	9.8	13.6	16.8	59.8	
Gaza Strip	100	6.0	7.7	14.1	72.2	
North Gaza	100	6.9	15.9	20.6	56.6	
Gaza	100	6.4	5.2	15.5	72.9	
Deir AL-Balah	100	6.7	8.5	7.0	77.8	
Khan Yunis	100	6.9	4.0	8.7	80.4	
Rafah	100	0.0	0.9	9.9	89.2	

2008

:14

Table 14: Percentage Distribution of Education Sector Establishments in the Palestinian Territory by Material of External Walls of the Educational Establishment, Sector, Region and Governorate, 2008

Sector\Region\Governorate	Material of External Walls								/ /
	Total	Other	Old Stone	Adobe Clay	Cement Block	Concrete	Stone and Concrete	Cleaned Stone	
Higher Education									
Palestinian Territory	100	0.0	6.5	0.0	12.3	2.4	30.2	48.6	
West Bank	100	0.0	9.5	0.0	0.0	3.6	22.0	64.9	
Gaza Strip	100	0.0	0.0	0.0	38.4	0.0	47.9	13.7	
General Education (Schools)									()
Palestinian Territory	100	0.1	7.5	0.0	16.1	14.2	40.2	21.9	
West Bank	100	0.3	10.2	0.1	17.2	15.7	25.3	31.2	
Jenin	100	0.4	5.5	0.0	22.9	27.4	19.0	24.8	
Tubas	100	0.0	5.4	0.0	37.9	18.9	16.2	21.6	
Tulkarm	100	0.0	10.9	0.0	51.4	10.1	16.7	10.9	
Nablus	100	0.0	11.3	0.4	11.5	22.7	31.4	22.7	
Qalqiliya	100	0.0	5.3	0.0	40.0	17.3	18.7	18.7	
Salfit	100	0.0	10.0	0.0	28.4	28.3	25.0	8.3	
Ramallah and Al-Bireh	100	0.0	9.7	0.0	14.1	12.7	29.8	33.7	
Jericho and Al Aghwar	100	3.8	3.8	0.0	53.8	3.8	19.3	15.5	
Jerusalem	100	0.5	19.8	0.0	5.2	4.7	21.4	48.4	
Bethlehem	100	0.7	6.9	0.0	2.1	12.9	32.6	44.8	
Hebron	100	0.0	10.4	0.0	10.0	13.1	27.1	39.4	
Gaza Strip	100	0.2	1.8	0.0	13.4	11.2	71.0	2.4	
North Gaza	100	0.0	1.3	0.0	14.2	10.7	70.9	2.9	
Gaza	100	0.0	2.3	0.0	18.3	11.4	67.4	0.6	
Deir AL-Balah	100	0.0	2.9	0.0	11.8	15.6	67.8	1.9	
Khan Yunis	100	0.0	1.4	0.0	4.0	8.8	83.1	2.7	
Rafah	100	2.1	0.0	0.0	9.6	9.6	70.1	8.6	

2008

:15

Table 15: Percentage Distribution of Education Sector Establishments in the Palestinian Territory by the Main Source of Electricity in the Educational Establishment, Sector, Region and Governorate, 2008

Sector\Region\Governorate	Total	Electricity Source of the Public Network						Electricity Source				/ /
		Other	Southern Electricity Co.	Electricity Distribution Co. for Gaza Governorates	Israeli Electricity Co.	Jerusalem District Electricity Co.	Local Authority Council	Total	No Electricity	Private Generator	Public Network	
Higher Education												()
Palestinian Territory	100	2.4	0.0	22.0	5.4	37.4	32.8	100	0.0	0.0	100	
West Bank	100	3.6	0.0	0.0	0.0	54.8	41.6	100	0.0	0.0	100	
Gaza Strip	100	0.0	0.0	69.2	17.1	0.0	13.7	100	0.0	0.0	100	
General Education (Schools)												
Palestinian Territory	100	2.6	1.4	3.1	13.0	20.9	59.0	100	0.3	1.0	98.7	
West Bank	100	1.1	2.1	0.0	13.9	31.1	51.8	100	0.4	1.3	98.3	
Jenin	100	2.7	0.0	0.0	31.1	0.0	66.2	100	0.0	1.3	98.7	
Tubas	100	0.0	0.0	0.0	16.2	0.0	83.8	100	0.0	0.0	100	
Tulkarm	100	0.0	0.0	0.0	9.5	0.0	90.5	100	0.0	0.7	99.3	
Nablus	100	0.0	0.0	0.0	10.5	0.0	89.5	100	0.0	0.4	99.6	
Qalqiliya	100	0.0	0.0	0.0	0.0	0.0	100.0	100	0.0	0.0	100	
Salfit	100	0.0	0.0	0.0	58.3	0.0	41.7	100	0.0	0.0	100	
Ramallah and Al-Bireh	100	0.5	0.0	0.0	0.0	96.6	2.9	100	0.5	0.0	99.5	
Jericho and Al Aghwar	100	0.0	0.0	0.0	20.8	79.2	0.0	100	0.0	3.8	96.2	
Jerusalem	100	0.0	0.0	0.0	0.0	98.9	1.1	100	0.0	1.0	99.0	
Bethlehem	100	0.0	0.0	0.0	0.0	98.6	1.4	100	1.4	2.9	95.7	
Hebron	100	2.9	8.7	0.0	21.6	0.0	66.8	100	1.1	2.5	96.4	
Gaza Strip	100	5.8	0.0	9.3	11.2	0.0	73.7	100	0.0	0.5	99.5	
North Gaza	100	4.6	0.0	5.5	22.3	0.0	67.6	100	0.0	0.0	100	
Gaza	100	4.3	0.0	11.2	7.5	0.0	77.0	100	0.0	1.1	98.9	
Deir AL-Balah	100	8.1	0.0	14.7	5.0	0.0	72.2	100	0.0	0.0	100	
Khan Yunis	100	6.8	0.0	8.8	18.6	0.0	65.8	100	0.0	0.0	100	
Rafah	100	9.1	0.0	2.7	4.3	0.0	83.9	100	0.0	0.0	100	

2008

:16

Table 16: Percentage Distribution of Education Sector Establishments in the Palestinian Territory by Number of Hours of Electricity Service in the Educational Establishment, Sector, Region and Governorate, 2008

Sector\Region\Governorate	Number of Hours of Electricity Service						/ /
	Total	24 24 Hours	23-17 17-23 Hours	16-8 8-16 Hours	7-4 4-7 Hours	4 Less Than 4 Hours	
Higher Education							
Palestinian Territory	100	68.3	18.4	10.9	2.4	0.0	
West Bank	100	100	0.0	0.0	0.0	0.0	
Gaza Strip	100	0.0	58.1	34.2	7.7	0.0	
General Education (Schools)							()
Palestinian Territory	100	43.1	22.0	5.8	25.8	3.3	
West Bank	100	64.1	3.1	0.9	30.7	1.2	
Jenin	100	59.6	3.2	0.9	33.6	2.7	
Tubas	100	8.1	0.0	2.7	89.2	0.0	
Tulkarm	100	96.4	1.4	0.0	0.8	1.4	
Nablus	100	41.1	5.0	0.0	53.4	0.5	
Qalqiliya	100	92.0	4.0	0.0	1.3	2.7	
Salfit	100	10.0	0.0	1.7	88.3	0.0	
Ramallah and Al-Bireh	100	45.7	4.4	3.5	45.9	0.5	
Jericho and Al Aghwar	100	15.4	0.0	0.0	80.8	3.8	
Jerusalem	100	36.4	1.6	1.0	61.0	0.0	
Bethlehem	100	89.5	5.6	0.7	3.5	0.7	
Hebron	100	92.6	2.4	0.2	3.2	1.6	
Gaza Strip	100	0.0	60.9	15.9	15.5	7.7	
North Gaza	100	0.0	67.0	21.9	8.3	2.8	
Gaza	100	0.0	58.8	16.7	17.0	7.5	
Deir AL-Balah	100	0.0	71.4	18.0	7.5	3.1	
Khan Yunis	100	0.0	53.3	9.4	21.3	16.0	
Rafah	100	0.0	61.2	11.9	18.8	8.1	

2008

:17

Table 17: Percentage Distribution of Education Sector Establishments in the Palestinian Territory by Existence of Adequate Lighting in the Class Rooms in the Educational Establishment, Sector, Region and Governorate, 2008

Sector\Region\Governorate	Existence of Adequate Lighting in the Class Rooms				/ /
	Total	Not Exist in all Rooms	Portion of Rooms	All Rooms	
Higher Education					
Palestinian Territory	100	0.0	0.0	100.0	
West Bank	100	0.0	0.0	100.0	
Gaza Strip	100	0.0	0.0	100.0	
General Education (Schools)					()
Palestinian Territory	100	1.6	7.6	90.8	
West Bank	100	1.3	7.1	91.6	
Jenin	100	2.2	9.9	87.9	
Tubas	100	0.0	2.7	97.3	
Tulkarm	100	1.4	1.4	97.2	
Nablus	100	0.8	5.2	94.0	
Qalqiliya	100	0.0	9.3	90.7	
Salfit	100	1.7	11.7	86.6	
Ramallah and Al-Bireh	100	0.5	9.1	90.4	
Jericho and Al Aghwar	100	0.0	0.0	100.0	
Jerusalem	100	0.5	6.2	93.3	
Bethlehem	100	0.7	7.7	91.6	
Hebron	100	2.3	7.6	90.1	
Gaza Strip	100	2.2	8.5	89.3	
North Gaza	100	0.7	8.5	90.8	
Gaza	100	2.8	7.1	90.1	
Deir AL-Balah	100	0.0	9.5	90.5	
Khan Yunis	100	3.5	12.2	84.3	
Rafah	100	2.1	7.4	90.5	

2008

:18

Table 18: Percentage Distribution of Education Sector Establishments in the Palestinian Territory the Direction of the Windows in the Majority of Class Rooms in the Educational Establishment, Sector, Region and Governorate, 2008

Sector\Region\Governorate	The Direction of The Windows in The Majority of Class Rooms								/ /
	Total	One Direction				Tow Directions		All Directions	
		West	East	South	North	North and South	West and East		
Higher Education									()
Palestinian Territory	100	0.0	0.0	2.4	10.2	19.5	24.0	43.9	
West Bank	100	0.0	0.0	3.6	14.9	14.3	20.8	46.4	
Gaza Strip	100	0.0	0.0	0.0	0.0	30.8	30.8	38.4	
General Education (Schools)									
Palestinian Territory	100	1.1	1.0	1.4	2.0	25.1	23.3	46.1	
West Bank	100	1.1	1.1	1.7	2.2	25.9	24.4	43.6	
Jenin	100	0.0	0.6	1.8	2.8	38.4	22.3	34.1	
Tubas	100	0.0	0.0	0.0	8.1	43.2	10.9	37.8	
Tulkarm	100	0.9	0.9	2.5	0.0	39.2	23.9	32.6	
Nablus	100	1.5	1.8	2.6	3.7	31.8	23.4	35.2	
Qalqiliya	100	0.0	0.0	0.0	0.0	32.0	17.3	50.7	
Salfit	100	2.5	0.0	0.0	2.5	30.0	16.7	48.3	
Ramallah and Al-Bireh	100	0.7	0.7	0.0	2.5	20.8	28.1	47.2	
Jericho and Al Aghwar	100	0.0	0.0	0.0	0.0	30.8	34.6	34.6	
Jerusalem	100	2.5	1.9	3.8	1.3	15.2	27.4	47.9	
Bethlehem	100	1.6	0.8	3.2	0.0	19.6	31.6	43.2	
Hebron	100	1.2	1.7	0.9	2.6	17.9	23.3	52.4	
Gaza Strip	100	1.2	0.8	0.4	1.8	23.5	21.0	51.3	
North Gaza	100	2.8	0.0	0.0	0.0	28.1	12.3	56.8	
Gaza	100	1.1	1.9	1.1	1.1	24.0	20.3	50.5	
Deir AL-Balah	100	0.0	0.0	0.0	1.9	18.2	26.1	53.8	
Khan Yunis	100	1.2	0.0	0.0	3.6	22.0	24.1	49.1	
Rafah	100	0.0	0.0	0.0	3.7	22.8	25.7	47.8	

2008

()

:19

Table 19: Percentage Distribution of Education Sector Establishments in the Palestinian Territory by Available of Ventilation (Fans, Conditioners) in the Class Rooms in the Educational Establishment, Sector, Region and Governorate, 2008

Sector\Region\Governorate	Available of Ventilation in the Class Rooms					/ /
	Total	Not Existing Fans or Conditioners in all Rooms	() Available, (Fans, Conditioners) for all Rooms	() Available, (Fans, Conditioners) for all Rooms	Available, Centralize Condition	
Higher Education						()
Palestinian Territory	100	12.6	41.9	36.6	8.9	
West Bank	100	18.5	43.4	25.0	13.1	
Gaza Strip	100	0.0	38.5	61.5	0.0	
General Education (Schools)						
Palestinian Territory	100	67.7	16.1	15.6	0.6	
West Bank	100	61.5	17.1	20.8	0.6	
Jenin	100	66.0	16.3	17.7	0.0	
Tubas	100	75.7	5.4	18.9	0.0	
Tulkarm	100	16.7	15.2	68.1	0.0	
Nablus	100	50.4	18.3	30.4	0.9	
Qalqiliya	100	32.0	29.3	38.7	0.0	
Salfit	100	51.7	33.3	15.0	0.0	
Ramallah and Al-Bireh	100	74.1	16.3	8.7	0.9	
Jericho and Al Aghwar	100	0.0	3.8	96.2	0.0	
Jerusalem	100	58.8	24.5	14.1	2.6	
Bethlehem	100	67.7	18.9	13.4	0.0	
Hebron	100	81.1	11.6	6.8	0.5	
Gaza Strip	100	80.5	14.2	4.9	0.4	
North Gaza	100	94.4	3.5	1.4	0.7	
Gaza	100	72.3	18.0	9.2	0.5	
Deir AL-Balah	100	81.9	18.1	0.0	0.0	
Khan Yunis	100	82.5	12.9	3.9	0.7	
Rafah	100	89.3	10.7	0.0	0.0	

2008

:20

Table 20: Percentage Distribution of Education Sector Establishments in the Palestinian Territory by Available of Heating in the Class Rooms in the Educational Establishment, Sector, Region and Governorate, 2008

Sector\Region\Governorate	Available of Heating in the Class Rooms					/ /
	Total	There is no Heating	() Available, (Heaters) for all Rooms	() Available, (Heaters) for all Rooms	Available, Centralize Heating	
Higher Education						
Palestinian Territory	100	34.1	8.1	3.3	54.5	
West Bank	100	3.6	11.9	4.8	79.7	
Gaza Strip	100	100.0	0.0	0.0	0.0	
General Education (Schools)						()
Palestinian Territory	100	89.7	5.5	2.1	2.7	
West Bank	100	85.5	7.6	2.9	4.0	
Jenin	100	92.8	6.8	0.4	0.0	
Tubas	100	94.6	5.4	0.0	0.0	
Tulkarm	100	99.3	0.7	0.0	0.0	
Nablus	100	91.8	6.8	0.9	0.5	
Qalqiliya	100	92.0	2.7	5.3	0.0	
Salfit	100	96.7	3.3	0.0	0.0	
Ramallah and Al-Bireh	100	77.5	6.0	2.9	13.6	
Jericho and Al Aghwar	100	100.0	0.0	0.0	0.0	
Jerusalem	100	62.3	14.6	12.1	11.0	
Bethlehem	100	71.8	11.7	4.4	12.1	
Hebron	100	88.5	8.8	2.0	0.7	
Gaza Strip	100	98.3	1.2	0.4	0.1	
North Gaza	100	98.6	0.7	0.0	0.7	
Gaza	100	97.9	2.1	0.0	0.0	
Deir AL-Balah	100	100.0	0.0	0.0	0.0	
Khan Yunis	100	97.2	0.6	2.2	0.0	
Rafah	100	100.0	0.0	0.0	0.0	

2008

:21

Table 21: Percentage Distribution of Education Sector Establishments in the Palestinian Territory by Energy Source of Heating in the Class Rooms in the Educational Establishment, Sector, Region and Governorate, 2008

Sector\Region\Governorate	Energy source of Heating in the Class rooms							/ /
	Total	There is no Heating	Others	Diesel	LPG	Kerosene	Electricity	
Higher Education								()
Palestinian Territory	100	34.1	0.0	54.5	0.0	0.0	11.4	
West Bank	100	3.6	0.0	79.8	0.0	0.0	16.6	
Gaza Strip	100	100.0	0.0	0.0	0.0	0.0	0.0	
General Education (Schools)								
Palestinian Territory	100	89.7	0.5	2.8	1.3	0.2	5.5	
West Bank	100	85.5	0.6	3.9	1.8	0.1	8.1	
Jenin	100	92.8	0.9	0.0	0.0	0.0	6.3	
Tubas	100	94.6	0.0	0.0	0.0	0.0	5.4	
Tulkarm	100	99.3	0.0	0.0	0.0	0.0	0.7	
Nablus	100	91.8	0.4	0.5	0.9	0.0	6.4	
Qalqiliya	100	92.0	0.0	0.0	1.3	0.0	6.7	
Salfit	100	96.7	0.0	0.0	0.0	0.0	3.3	
Ramallah and Al-Bireh	100	77.5	0.8	12.7	1.5	0.5	7.0	
Jericho and Al Aghwar	100	100.0	0.0	0.0	0.0	0.0	0.0	
Jerusalem	100	62.3	0.0	11.0	1.6	0.0	25.1	
Bethlehem	100	71.8	2.1	10.6	9.3	0.0	6.2	
Hebron	100	88.5	0.7	1.1	2.0	0.2	7.5	
Gaza Strip	100	98.3	0.6	0.4	0.2	0.4	0.1	
North Gaza	100	98.6	0.0	0.7	0.0	0.0	0.7	
Gaza	100	97.9	1.1	0.5	0.5	0.0	0.0	
Deir AL-Balah	100	100.0	0.0	0.0	0.0	0.0	0.0	
Khan Yunis	100	97.2	0.0	0.6	0.0	2.2	0.0	
Rafah	100	100.0	0.0	0.0	0.0	0.0	0.0	

2008

:22

Table 22: Percentage Distribution of Education Sector Establishments in the Palestinian Territory by the Main Source of Obtaining Water in the Educational Establishment, Sector, Region and Governorate, 2008

Sector\Region\Governorate	The Main Source of Obtaining Water						/ /
	Total	Others	Spring	Water Well	Water Tanks	Water Network	
Higher Education							()
Palestinian Territory	100	0.0	0.0	9.8	2.4	87.8	
West Bank	100	0.0	0.0	3.6	0.0	96.4	
Gaza Strip	100	0.0	0.0	24.0	6.8	69.2	
General Education (Schools)							
Palestinian Territory	100	0.3	0.2	6.0	4.5	89.0	
West Bank	100	0.2	0.3	8.9	4.1	86.5	
Jenin	100	1.0	0.0	12.5	10.3	76.2	
Tubas	100	0.0	0.0	5.3	39.1	55.6	
Tulkarm	100	0.4	0.3	3.6	1.5	94.2	
Nablus	100	0.3	1.4	15.5	5.7	77.1	
Qalqiliya	100	0.0	0.0	6.7	1.3	92.0	
Salfit	100	0.0	0.0	9.4	2.3	88.3	
Ramallah and Al-Bireh	100	0.0	0.3	2.0	0.0	97.7	
Jericho and Al Aghwar	100	3.8	0.0	0.0	3.9	92.3	
Jerusalem	100	0.0	0.0	1.6	0.5	97.9	
Bethlehem	100	0.0	0.0	0.0	0.0	100.0	
Hebron	100	0.1	0.3	14.1	5.0	80.5	
Gaza Strip	100	0.5	0.0	1.1	4.1	94.3	
North Gaza	100	0.8	0.0	0.7	2.8	95.7	
Gaza	100	0.3	0.0	0.9	4.4	94.4	
Deir AL-Balah	100	0.0	0.0	2.0	4.6	93.4	
Khan Yunis	100	1.3	0.0	3.9	4.5	90.3	
Rafah	100	0.0	0.0	0.1	1.0	98.9	

2008

Table 23: Monthly Average of Quantity of Consumed Water in Education Sector Establishments in the Palestinian Territory, Student's Share of the Monthly Amount of Water Consumed, Student's Share of the Water Taps by Sector, Region and Governorate, 2008

Sector\Region\Governorate	(100/) Student's Share of the Water Taps (Tap Water\100 Student')	(/ /) Student's Share of the Monthly Amount of Water Consumed (Liter / Student / Month)	Monthly Average of Quantity of Consumed Water in Cubic Meter	/ /
Higher Education				
Palestinian Territory	9.0	277	20,176	
West Bank	10.5	368	14,359	
Gaza Strip	5.8	173	5,817	
General Education (Schools)				()
Palestinian Territory	4.2	129	167,147	
West Bank	4.4	133	87,567	
Jenin	4.5	118	8,987	
Tubas	5.8	116	1,681	
Tulkarm	4.8	166	7,950	
Nablus	4.4	108	10,289	
Qalqiliya	6.3	163	4,469	
Salfit	4.8	116	2,106	
Ramallah and Al-Bireh	3.9	145	11,704	
Jericho and Al Aghwar	6.1	151	1,620	
Jerusalem	5.1	182	11,482	
Bethlehem	4.1	136	7,007	
Hebron	3.7	119	20,272	
Gaza Strip	3.7	125	79,580	
North Gaza	3.8	123	13,806	
Gaza	3.4	115	30,303	
Deir AL-Balah	4.3	112	9,878	
Khan Yunis	3.5	150	15,996	
Rafah	4.1	140	9,597	

2008

:24

Table 24: Percentage Distribution of Education Sector Establishments in the Palestinian Territory by Evaluate the Quality of water, Source of Obtaining Water, Sector, Region and Governorate, 2008

Sector\Region\Governorate	Evaluate the Quality of water by The Source of Obtaining Water																				/	/
	Others				Spring				Water Well				Water Tanks				Water Network					
	T	B	M	G	T	B	M	G	T	B	M	G	T	B	M	G	T	B	M	G		
Higher Education																					()	
Palestinian Territory	0.0	0.0	0.0	0.0	0.0	0.0	0.0	0.0	100	0.0	26.5	73.5	100	0.0	0.0	100.0	100	4.9	13.9	81.2		
West Bank	0.0	0.0	0.0	0.0	0.0	0.0	0.0	0.0	100	0.0	18.5	81.5	100	0.0	0.0	100.0	100	0.0	14.8	85.2		
Gaza Strip	0.0	0.0	0.0	0.0	0.0	0.0	0.0	0.0	100	0.0	44.4	55.6	100	0.0	0.0	100.0	100	19.8	11.1	69.1		
General Education (Schools)																						
Palestinian Territory	100	2.2	11.1	86.7	100	9.1	36.5	54.4	100	5.8	21.2	73.0	100	0.5	10.8	88.7	100	3.3	22.2	74.5		
West Bank	100	7.2	35.7	57.1	100	9.1	36.5	54.4	100	5.1	20.5	74.4	100	1.0	14.3	84.7	100	0.7	10.2	89.1		
Jenin	100	0.0	50.0	50.0	0.0	0.0	0.0	0.0	100	0.0	17.9	82.1	100	0.0	16.3	83.7	100	0.6	8.7	90.7		
Tubas	0.0	0.0	0.0	0.0	0.0	0.0	0.0	0.0	100	0.0	37.5	62.5	100	0.0	17.6	82.4	100	0.0	34.6	65.4		
Tulkarm	100	0.0	0.0	100.0	100	0.0	0.0	100.0	100	0.0	11.1	88.9	100	0.0	0.0	100.0	100	0.9	6.1	93.0		
Nablus	100	0.0	50.0	50.0	100	0.0	75.0	25.0	100	4.8	31.1	64.1	100	0.0	15.2	84.8	100	0.0	8.0	92.0		
Qalqiliya	0.0	0.0	0.0	0.0	0.0	0.0	0.0	0.0	100	0.0	30.0	70.0	100	0.0	25.0	75.0	100	2.9	17.4	79.7		
Salfit	0.0	0.0	0.0	0.0	0.0	0.0	0.0	0.0	100	25.0	12.5	62.5	100	0.0	40.0	60.0	100	2.0	8.0	90.0		
Ramallah and Al-Bireh	0.0	0.0	0.0	0.0	100	0.0	50.0	50.0	100	4.4	38.0	57.6	100	17.6	33.0	49.4	100	1.0	16.6	82.4		
Jericho and Al Aghwar	100	0.0	50.0	50.0	100	0.0	0.0	100.0	0.0	0.0	0.0	0.0	100	0.0	0.0	100.0	100	0.0	4.2	95.8		
Jerusalem	0.0	0.0	0.0	0.0	0.0	0.0	0.0	0.0	100	7.7	23.0	69.3	100	7.6	23.2	69.2	100	0.5	8.1	91.4		
Bethlehem	100	100.0	0.0	0.0	100	100.0	0.0	0.0	100	20.3	16.8	62.9	100	19.2	0.0	80.8	100	0.8	10.8	88.4		
Hebron	100	0.0	25.0	75.0	100	0.0	0.0	100.0	100	3.6	14.8	81.6	100	0.0	9.2	90.8	100	0.3	7.8	91.9		
Gaza Strip	100	0.0	0.0	100.0	0.0	0.0	0.0	0.0	100	17.7	31.9	50.4	100	0.0	7.2	92.8	100	8.5	45.5	46.0		
North Gaza	100	0.0	0.0	100.0	0.0	0.0	0.0	0.0	100	0.0	50.0	50.0	100	0.0	11.4	88.6	100	1.6	43.0	55.4		
Gaza	100	0.0	0.0	100.0	0.0	0.0	0.0	0.0	100	19.2	32.4	48.4	100	0.0	2.8	97.2	100	14.0	44.0	42.0		
Deir AL-Balah	100	0.0	0.0	100.0	0.0	0.0	0.0	0.0	100	40.0	40.0	20.0	100	0.0	13.2	86.8	100	8.2	38.5	53.3		
Khan Yunis	100	0.0	0.0	100.0	0.0	0.0	0.0	0.0	100	0.0	0.0	100.0	100	0.0	13.9	86.1	100	6.3	46.5	47.2		
Rafah	100	0.0	0.0	100.0	0.0	0.0	0.0	0.0	100	0.0	100.0	0.0	100	0.0	11.0	89.0	100	0.0	60.5	39.5		

N: The Quality of Water is Bad, T: Total, G: The Quality of Water is Good, M: The Quality of Water is Medium.

ج: نوعية المياه جيدة، مت: نوعية المياه متوسطة الجودة، س: نوعية المياه سيئة، م: المجموع.

2008

:25

Table 25: Percentage Distribution of Education Sector Establishments in the Palestinian Territory by Number of Water Taps in the Class Rooms in the Educational Establishment, Sector, Region and Governorate, 2008

Sector\Region\Governorate	Number of Water Taps ()					/ /
	Total	80 80 Taps and More	79 - 40	39 - 20	20 Less Than 20 Taps	
Higher Education						
Palestinian Territory	100	15.2	25.2	21.8	37.8	
West Bank	100	10.7	8.3	25.6	55.4	
Gaza Strip	100	24.8	61.5	13.7	0.0	
General Education (Schools)						()
Palestinian Territory	100	0.3	6.2	19.1	74.4	
West Bank	100	0.1	1.9	9.3	88.7	
Jenin	100	0.0	1.9	8.0	90.1	
Tubas	100	0.0	5.4	2.7	91.9	
Tulkarm	100	0.0	0.0	7.5	92.5	
Nablus	100	0.0	1.9	4.0	94.1	
Qalqiliya	100	0.0	1.3	17.3	81.4	
Salfit	100	0.0	0.0	13.3	86.7	
Ramallah and Al-Bireh	100	0.0	1.6	7.4	91.0	
Jericho and Al Aghwar	100	0.0	8.0	16.0	76.0	
Jerusalem	100	0.0	1.6	14.2	84.2	
Bethlehem	100	0.0	4.6	10.6	84.8	
Hebron	100	0.2	1.4	9.9	88.5	
Gaza Strip	100	0.8	15.1	39.5	44.6	
North Gaza	100	0.0	18.5	45.7	35.8	
Gaza	100	0.5	12.6	34.4	52.5	
Deir AL-Balah	100	1.0	35.4	35.1	28.5	
Khan Yunis	100	0.0	3.4	49.8	46.8	
Rafah	100	4.3	17.3	38.8	39.6	

2008

:26

Table 26: Percentage Distribution of Education Sector Establishments in the Palestinian Territory by Availability of Water Tanks and there Numbers in the Educational Establishment, Sector, Region and Governorate, 2008

Sector\Region\Governorate	Number of Water Tanks						Availability of Water Tanks	/ /
	Total	20 20 and More	19 – 15	14 - 10	9 - 5	4 - 1		
Higher Education								
Palestinian Territory	100	30.9	8.1	29.4	14.8	16.8	93.5	
West Bank	100	19.4	12.5	36.1	15.3	16.7	90.5	
Gaza Strip	100	52.1	0.0	17.1	13.7	17.1	100	
General Education (Schools)								()
Palestinian Territory	100	4.8	5.7	11.5	32.9	45.1	97.6	
West Bank	100	1.4	2.2	6.8	32.2	57.4	96.7	
Jenin	100	0.6	1.5	5.7	29.1	63.1	98.7	
Tubas	100	0.0	2.7	16.2	40.6	40.5	100	
Tulkarm	100	0.0	0.0	0.8	21.2	78.0	95.7	
Nablus	100	2.7	1.8	11.4	35.2	48.9	98.0	
Qalqiliya	100	0.0	0.0	0.0	25.4	74.6	94.7	
Salfit	100	0.0	0.0	0.0	18.3	81.7	100	
Ramallah and Al-Bireh	100	1.7	4.3	7.7	36.8	49.5	99.5	
Jericho and Al Aghwar	100	3.8	7.8	3.8	26.9	57.7	100	
Jerusalem	100	2.5	1.8	6.3	26.9	62.5	83.8	
Bethlehem	100	2.8	1.9	9.7	32.4	53.2	97.3	
Hebron	100	1.0	3.0	6.8	37.5	51.7	98.9	
Gaza Strip	100	11.6	12.9	21.0	34.5	20.0	99.3	
North Gaza	100	21.2	8.8	23.5	22.3	24.2	100	
Gaza	100	3.9	7.4	17.7	44.8	26.2	98.9	
Deir AL-Balah	100	17.4	34.3	21.3	17.2	9.8	98.1	
Khan Yunis	100	8.3	13.2	29.5	35.6	13.4	100	
Rafah	100	27.6	17.3	16.6	27.8	10.7	100	

Table 27: Percentage Distribution of Education Sector Establishments Which have Water Tanks in the Palestinian Territory by the Number of Times Cleaning the Water Tanks in Year in the Educational Establishment, Sector, Region and Governorate, 2008

Sector\Region\Governorate	Number of Times Cleaning the Water Tanks in Year							Availability of Water Tanks	/ /
	Total	Five Times and More	Four Times	Three Times	Twice	One Time	No Cleaning		
Higher Education									
Palestinian Territory	100	0.0	11.2	0.0	20.9	52.0	15.9	93.5	
West Bank	100	0.0	17.4	0.0	22.9	50.0	9.7	90.5	
Gaza Strip	100	0.0	0.0	0.0	17.1	55.5	27.4	100	
General Education (Schools)									()
Palestinian Territory	100	2.4	4.7	3.6	42.7	41.2	5.4	97.6	
West Bank	100	2.3	4.4	3.6	43.3	41.0	5.4	96.7	
Jenin	100	2.3	4.6	1.8	60.1	28.5	2.7	98.7	
Tubas	100	0.0	10.8	2.7	51.4	32.4	2.7	100	
Tulkarm	100	0.8	0.8	2.3	64.3	28.8	3.0	95.7	
Nablus	100	1.2	2.9	3.4	36.4	51.7	4.4	98.0	
Qalqiliya	100	0.0	2.8	2.8	31.0	50.7	12.7	94.7	
Salfit	100	0.0	1.7	6.8	47.4	39.0	5.1	100	
Ramallah and Al-Bireh	100	1.9	5.7	2.4	42.0	44.0	4.0	99.5	
Jericho and Al Aghwar	100	0.0	0.0	0.0	44.0	44.0	12.0	100	
Jerusalem	100	1.3	1.9	3.1	37.9	51.5	4.3	83.8	
Bethlehem	100	2.1	4.9	5.6	45.5	37.7	4.2	97.3	
Hebron	100	5.1	6.9	5.1	34.6	40.0	8.3	98.9	
Gaza Strip	100	2.6	5.2	3.6	41.6	41.5	5.5	99.3	
North Gaza	100	1.5	5.3	1.3	40.6	44.9	6.4	100	
Gaza	100	4.8	4.5	3.4	46.1	33.6	7.6	98.9	
Deir AL-Balah	100	2.1	4.1	5.3	29.6	56.2	2.7	98.1	
Khan Yunis	100	0.0	3.9	3.6	46.1	44.3	2.1	100	
Rafah	100	0.0	11.3	5.4	30.6	49.0	3.7	100	

Table 28: Percentage Distribution of Education Sector Establishments Which have Water Tanks in the Palestinian Territory by the Number of Times Check the Water Tanks in Year in the Educational Establishment, Sector, Region and Governorate, 2008

Sector\Region\Governorate	Number of Times Check the Water Tanks in Year							Availability of Water Tanks	/ /
	Total	Five Times and More	Four Times	Three Times	Twice	One Time	No Checking		
Higher Education									
Palestinian Territory	100	24.9	0.0	16.3	17.1	20.7	21.0	93.5	
West Bank	100	12.5	0.0	25.0	26.4	27.8	8.3	90.5	
Gaza Strip	100	47.9	0.0	0.0	0.0	7.7	44.4	100	
General Education (Schools)									()
Palestinian Territory	100	11.0	5.4	3.5	26.9	37.4	15.8	97.6	
West Bank	100	12.9	5.3	3.6	23.6	36.7	17.9	96.7	
Jenin	100	16.0	9.3	2.8	27.1	31.7	13.1	98.7	
Tubas	100	5.5	13.9	2.8	41.7	16.7	19.4	100	
Tulkarm	100	3.8	3.8	6.9	32.8	37.4	15.3	95.7	
Nablus	100	14.8	6.9	1.7	18.3	35.7	22.6	98.0	
Qalqiliya	100	8.4	1.4	0.0	26.8	31.0	32.4	94.7	
Salfit	100	8.5	3.4	5.1	20.3	42.4	20.3	100	
Ramallah and Al-Bireh	100	13.1	3.9	4.8	19.7	41.5	17.0	99.5	
Jericho and Al Aghwar	100	12.5	0.0	4.2	20.8	37.5	25.0	100	
Jerusalem	100	12.5	1.9	1.9	28.3	27.7	27.7	83.8	
Bethlehem	100	19.7	4.9	5.8	19.8	43.0	6.8	97.3	
Hebron	100	12.6	5.5	3.9	22.1	40.0	15.9	98.9	
Gaza Strip	100	7.3	5.4	3.2	33.7	39.0	11.4	99.3	
North Gaza	100	9.2	8.0	4.3	22.8	46.4	9.3	100	
Gaza	100	9.0	4.2	1.7	34.9	37.0	13.2	98.9	
Deir AL-Balah	100	2.0	4.8	5.0	39.5	34.9	13.8	98.1	
Khan Yunis	100	3.2	8.1	5.7	32.6	39.7	10.7	100	
Rafah	100	8.6	2.7	1.6	40.9	39.8	6.4	100	

2008

:29

Table 29: Percentage Distribution of Education Sector Establishments in the Palestinian Territory by Wastewater Disposal Method in the Educational Establishment, Sector, Region and Governorate, 2008

Sector\Region\Governorate	Wastewater Disposal Method					/ /
	Total	Other	Tight Cesspit	Porous Cesspit	Wastewater Network	
Higher Education						()
Palestinian Territory	100	2.5	10.8	13.8	72.9	
West Bank	100	3.5	9.5	6.0	81.0	
Gaza Strip	100	0.0	13.7	30.8	55.5	
General Education (Schools)						
Palestinian Territory	100	0.5	11.4	41.6	46.5	
West Bank	100	0.8	14.9	52.5	31.8	
Jenin	100	0.5	25.7	58.9	14.9	
Tubas	100	0.0	13.5	83.8	2.7	
Tulkarm	100	1.5	13.1	52.6	32.8	
Nablus	100	0.0	13.2	43.9	42.9	
Qalqiliya	100	1.4	17.3	45.3	36.0	
Salfit	100	1.7	36.7	53.3	8.3	
Ramallah and Al-Bireh	100	1.1	22.4	52.8	23.7	
Jericho and Al Aghwar	100	0.0	29.1	66.7	4.2	
Jerusalem	100	1.0	5.8	29.8	63.4	
Bethlehem	100	2.1	9.7	52.1	36.1	
Hebron	100	0.0	9.1	61.9	29.0	
Gaza Strip	100	0.0	4.0	19.1	76.9	
North Gaza	100	0.0	0.7	7.3	92.0	
Gaza	100	0.0	0.0	7.1	92.9	
Deir AL-Balah	100	0.0	4.0	11.7	84.3	
Khan Yunis	100	0.0	17.9	70.9	11.2	
Rafah	100	0.0	2.2	9.6	88.2	

2008

:30

Table 30: Percentage Distribution of Education Sector Establishments in the Palestinian Territory by Number of Toilets in the Educational Establishment, Sector, Region and Governorate, 2008

Sector\Region\Governorate	Number of Toilets							/ /
	Total	50 50 and More	49 - 40	39 - 30	29 - 20	19 - 10	10 Less Than 10	
Higher Education								
Palestinian Territory	100	20.6	11.7	10.0	16.5	12.9	28.3	
West Bank	100	7.4	13.6	14.8	17.9	19.1	27.2	
Gaza Strip	100	47.9	7.6	0.0	13.7	0.0	30.8	
General Education (Schools)								()
Palestinian Territory	100	0.2	0.2	1.4	10.0	37.3	50.9	
West Bank	100	0.2	0.2	0.9	4.4	30.2	64.1	
Jenin	100	0.0	0.0	0.5	1.1	28.0	70.4	
Tubas	100	0.0	2.7	0.0	2.7	32.4	62.2	
Tulkarm	100	0.0	0.0	1.5	2.2	33.3	63.0	
Nablus	100	0.0	0.0	0.5	3.0	29.9	66.6	
Qalqiliya	100	0.0	0.0	1.3	4.0	44.0	50.7	
Salfit	100	0.0	0.0	0.0	0.0	26.7	73.3	
Ramallah and Al-Bireh	100	0.0	0.5	1.5	7.8	38.8	51.4	
Jericho and Al Aghwar	100	3.8	0.0	3.8	7.7	38.5	46.2	
Jerusalem	100	1.0	0.5	0.5	10.4	26.1	61.5	
Bethlehem	100	0.0	0.0	3.1	4.6	22.7	69.6	
Hebron	100	0.2	0.2	0.2	3.8	27.9	67.7	
Gaza Strip	100	0.1	0.3	2.4	21.5	52.0	23.7	
North Gaza	100	0.7	0.0	6.0	26.6	55.7	11.0	
Gaza	100	0.0	0.6	1.4	16.9	51.0	30.1	
Deir AL-Balah	100	0.0	0.0	2.5	34.1	51.7	11.7	
Khan Yunis	100	0.0	0.0	0.0	20.1	54.5	25.4	
Rafah	100	0.0	0.0	4.9	21.0	47.3	26.8	

2008

()

:31

Table 31: Percentage Distribution of Education Sector Establishments in the Palestinian Territory by the Distance Between the Water Taps and Toilets (Meter) in the Educational Establishment, Sector, Region and Governorate, 2008

Sector\Region\Governorate	The Distance Between the Water Taps and Toilets (Meter) ()						/ /
	Total	30 More than 30 Meters	30 - 21	20 - 11	10 - 3	Tow Meters and Less	
Higher Education							()
Palestinian Territory	100	16.0	4.0	2.4	44.9	32.7	
West Bank	100	15.5	6.0	0.0	38.7	39.8	
Gaza Strip	100	17.1	0.0	7.7	58.1	17.1	
General Education (Schools)							
Palestinian Territory	100	12.0	6.3	11.4	36.3	34.0	
West Bank	100	15.8	8.4	15.5	38.6	21.7	
Jenin	100	12.8	6.9	15.1	40.9	24.3	
Tubas	100	27.0	8.1	5.4	37.8	21.7	
Tulkarm	100	16.1	8.0	13.9	40.1	21.9	
Nablus	100	16.2	7.8	14.0	38.3	23.7	
Qalqiliya	100	30.7	14.7	12.0	20.0	22.6	
Salfit	100	18.3	8.3	20.0	41.7	11.7	
Ramallah and Al-Bireh	100	19.2	11.4	19.9	33.4	16.1	
Jericho and Al Aghwar	100	28.0	8.0	24.0	28.0	12.0	
Jerusalem	100	13.1	7.3	18.8	37.8	23.0	
Bethlehem	100	12.4	13.0	22.8	33.2	18.6	
Hebron	100	13.2	5.9	11.4	45.5	24.0	
Gaza Strip	100	3.9	2.1	2.7	31.4	59.9	
North Gaza	100	2.2	2.7	2.1	32.8	60.2	
Gaza	100	6.2	1.3	4.1	30.8	57.6	
Deir AL-Balah	100	2.0	4.1	1.0	31.0	61.9	
Khan Yunis	100	1.1	2.9	2.1	31.2	62.7	
Rafah	100	3.8	1.1	0.0	33.2	61.9	

()

:32

2008

Table 32: Percentage Distribution of Education Sector Establishments which have Porous Cesspit and Water Well in the Palestinian Territory by the Distance Between the Water Well and Porous cesspit (Meter) in the Educational Establishment, Sector, Region and Governorate, 2008

Sector\Region\Governorate	The Distance Between the Water Well and Porous Cesspit (Meter) ()					Existence of Porous Cesspit and Water Well	/ /
	Total	75 More Than 75	75 - 46	45 - 16	15 15 and Less		
Higher Education							
Palestinian Territory	100	16.7	47.2	36.1	0.0	8.4	
West Bank	100	25.0	20.8	54.2	0.0	6.0	
Gaza Strip	100	0.0	100.0	0.0	0.0	13.7	
General Education (Schools)							()
Palestinian Territory	100	16.8	21.7	36.5	25.0	16.5	
West Bank	100	18.9	24.3	39.0	17.8	23.7	
Jenin	100	11.3	19.2	46.6	22.9	28.9	
Tubas	100	6.7	53.3	26.7	13.3	31.6	
Tulkarm	100	9.4	40.6	28.1	21.9	15.9	
Nablus	100	20.2	21.4	44.6	13.8	19.0	
Qalqiliya	100	37.5	0.0	37.5	25.0	10.7	
Salfit	100	20.0	33.3	20.0	26.7	10.0	
Ramallah and Al-Bireh	100	7.3	32.7	40.0	20.0	20.5	
Jericho and Al Aghwar	100	0.0	0.0	50.0	50.0	3.8	
Jerusalem	100	15.8	5.3	31.5	47.4	6.2	
Bethlehem	100	12.4	27.3	50.0	10.3	25.4	
Hebron	100	26.5	22.6	36.3	14.6	39.2	
Gaza Strip	100	4.2	5.7	21.0	69.1	1.6	
North Gaza	100	50.0	50.0	0.0	0.0	0.7	
Gaza	100	4.3	6.2	16.6	72.9	0.9	
Deir AL-Balah	100	0.0	13.2	0.0	86.8	1.9	
Khan Yunis	100	4.3	4.2	31.0	60.5	3.9	
Rafah	100	0.0	0.0	12.8	87.2	1.1	

2008

Table 33: Percentage Distribution of Education Sector Establishments which have Porous Cesspit and Water Well in the Palestinian Territory by Location of Water Well and Porous Cesspit in the Educational Establishment, Sector, Region and Governorate, 2008

Sector\Region\Governorate	Location of Water Well and Porous Cesspit				Existence of Porous Cesspit and Water Well	/ /
	Total	On the Same Level	Well Above Cesspit	Well Below Cesspit		
Higher Education						
Palestinian Territory	100	9.7	47.3	43.0	8.4	
West Bank	100	15.8	42.1	42.1	6.0	
Gaza Strip	100	0.0	55.6	44.4	13.7	
General Education (Schools)						()
Palestinian Territory	100	16.2	67.9	15.9	16.5	
West Bank	100	15.8	74.0	10.2	23.7	
Jenin	100	18.6	60.8	20.6	28.9	
Tubas	100	13.3	73.4	13.3	31.6	
Tulkarm	100	13.8	72.4	13.8	15.9	
Nablus	100	20.5	73.2	6.3	19.0	
Qalqiliya	100	12.5	87.5	0.0	10.7	
Salbit	100	7.7	69.2	23.1	10.0	
Ramallah and Al-Bireh	100	14.5	76.4	9.1	20.5	
Jericho and Al Aghwar	100	0.0	0.0	100.0	3.8	
Jerusalem	100	27.8	55.5	16.7	6.2	
Bethlehem	100	17.6	73.6	8.8	25.4	
Hebron	100	13.7	79.9	6.4	39.2	
Gaza Strip	100	19.2	17.7	63.1	1.6	
North Gaza	100	50.0	0.0	50.0	0.7	
Gaza	100	20.7	0.0	79.3	0.9	
Deir AL-Balah	100	0.0	15.2	84.8	1.9	
Khan Yunis	100	24.9	27.1	48.0	3.9	
Rafah	100	0.0	11.0	89.0	1.1	

2008

:34

Table 34: Percentage Distribution of Education Sector Establishments Which Did not Collect the Waste Daily in the Palestinian Territory by Periodicity of Waste Collection in Week in the Educational Establishment, Sector, Region and Governorate, 2008

Sector\Region\Governorate	Periodicity of Waste Collection in Week in case of not Available Daily Collection Waste				Did not Collect the Waste Daily	/ /
	Total	5 5 Times and More	4-3 3-4 Times	2-1 1-2 Times		
Higher Education						
Palestinian Territory	-	-	-	-	0.0	
West Bank	-	-	-	-	0.0	
Gaza Strip	-	-	-	-	0.0	
General Education (Schools)						()
Palestinian Territory	100	63.1	19.1	17.8	45.0	
West Bank	100	66.4	18.1	15.5	36.3	
Jenin	100	49.0	21.8	29.2	11.7	
Tubas	100	80.0	0.0	20.0	15.8	
Tulkarm	100	61.3	18.2	20.5	31.9	
Nablus	100	77.1	13.9	9.0	58.2	
Qalqiliya	100	5.6	61.1	33.3	24.0	
Salfit	100	71.4	28.6	0.0	13.3	
Ramallah and Al-Bireh	100	63.4	14.7	21.9	30.4	
Jericho and Al Aghwar	100	92.3	0.0	7.7	100	
Jerusalem	100	52.9	29.5	17.6	8.8	
Bethlehem	100	73.3	12.7	14.0	65.2	
Hebron	100	62.0	22.0	16.0	45.9	
Gaza Strip	100	59.2	20.2	20.6	63.3	
North Gaza	100	57.8	24.8	17.4	46.0	
Gaza	100	51.4	23.4	25.2	68.0	
Deir AL-Balah	100	63.0	17.8	19.2	63.2	
Khan Yunis	100	68.8	11.0	20.2	64.0	
Rafah	100	73.4	19.4	7.2	68.6	

2008

:35

Table 35: Percentage Distribution of Education Sector Establishments in the Palestinian Territory by Package Method for Collected Waste in the Educational Establishment, Sector, Region and Governorate, 2008

Sector\Region\Governorate	Package Method for Collected Waste							/ /
	Total	Normal Bags	Normal Plastic Boxes	Special Plastic Boxes	Carton Boxes	Metal Boxes	Special Bags	
Higher Education								()
Palestinian Territory	100	27.6	5.4	2.5	0.0	0.0	64.5	
West Bank	100	40.5	0.0	0.0	0.0	0.0	59.5	
Gaza Strip	100	0.0	17.1	7.7	0.0	0.0	75.2	
General Education (Schools)								
Palestinian Territory	100	19.5	7.6	40.4	1.0	2.6	28.9	
West Bank	100	24.4	5.4	32.2	1.1	0.9	36.0	
Jenin	100	43.6	5.1	23.1	0.5	0.9	26.8	
Tubas	100	21.1	10.5	42.1	0.0	0.0	26.3	
Tulkarm	100	33.3	18.1	32.7	0.0	0.0	15.9	
Nablus	100	30.8	3.2	24.5	0.0	0.4	41.1	
Qalqiliya	100	21.3	10.7	42.7	0.0	1.3	24.0	
Salfit	100	31.7	1.7	33.3	0.0	3.3	30.0	
Ramallah and Al-Bireh	100	13.4	3.3	47.9	2.4	0.5	32.5	
Jericho and Al Aghwar	100	7.7	0.0	73.1	0.0	0.0	19.2	
Jerusalem	100	18.2	1.0	17.7	0.5	0.5	62.1	
Bethlehem	100	14.5	6.2	34.0	4.1	0.7	40.5	
Hebron	100	20.4	5.0	33.9	1.6	1.6	37.5	
Gaza Strip	100	9.3	12.2	57.5	0.8	6.1	14.1	
North Gaza	100	9.8	9.9	59.9	0.7	12.4	7.3	
Gaza	100	10.8	11.9	60.6	1.6	4.7	10.4	
Deir AL-Balah	100	3.5	21.5	59.4	0.0	4.0	11.6	
Khan Yunis	100	7.1	13.2	59.7	0.0	6.0	14.0	
Rafah	100	12.8	4.4	34.9	0.0	5.0	42.9	

2008

:36

Table 36: Percentage Distribution of Education Sector Establishments in the Palestinian Territory by Responsibility of Waste Collection in the Educational Establishment, Sector, Region and Governorate, 2008

Sector\Region\Governorate	Responsibility of Waste Collection in the Educational Establishment				/ /
	Total	الأذن والطلاب معاً Porter and Students	الطلاب فقط Students Only	الأذن فقط Porter Only	
Higher Education					
Palestinian Territory	100	0.0	0.0	100	
West Bank	100	0.0	0.0	100	
Gaza Strip	100	0.0	0.0	100	
General Education (Schools)					()
Palestinian Territory	100	52.8	0.6	46.6	
West Bank	100	48.4	0.6	51.0	
Jenin	100	48.9	0.0	51.1	
Tubas	100	44.7	0.0	55.3	
Tulkarm	100	40.6	0.7	58.7	
Nablus	100	31.4	1.6	67.0	
Qalqiliya	100	50.7	0.0	49.3	
Salfit	100	41.7	0.0	58.3	
Ramallah and Al-Bireh	100	66.7	0.5	32.8	
Jericho and Al Aghwar	100	65.4	0.0	34.6	
Jerusalem	100	44.7	0.5	54.8	
Bethlehem	100	45.5	0.7	53.8	
Hebron	100	54.0	0.5	45.5	
Gaza Strip	100	61.9	0.6	37.5	
North Gaza	100	79.0	0.7	20.3	
Gaza	100	54.6	0.8	44.6	
Deir AL-Balah	100	61.3	0.0	38.7	
Khan Yunis	100	63.4	0.7	35.9	
Rafah	100	65.1	0.0	34.9	

2008

:37

Table 37: Percentage Distribution of Education Sector Establishments in the Palestinian Territory by Method of Primary Waste Disposal in the Educational Establishment, Sector, Region and Governorate, 2008

Sector\Region\Governorate	Methods of Waste Disposal in Event of Non Collected in Containers							Collected in container			/ /
	Total	Other	Transferred Directly to the Garbage Van	Transferred Directly to Dumping Site	Burial	Burning	Disposed the Waste Randomly	Total	Not Available	Available	
Higher Education											
Palestinian Territory	-	-	-	-	-	-	-	100	0.0	100	
West Bank	-	-	-	-	-	-	-	100	0.0	100	
Gaza Strip	-	-	-	-	-	-	-	100	0.0	100	
General Education (Schools)											()
Palestinian Territory	100	2.7	6.2	48.3	1.6	38.9	2.3	100	15.2	84.8	
West Bank	100	3.3	5.2	39.7	0.7	48.4	2.7	100	20.0	80.0	
Jenin	100	1.4	5.4	56.2	0.0	37.0	0.0	100	5.3	94.7	
Tubas	100	0.0	14.3	0.0	0.0	85.7	0.0	100	26.1	73.9	
Tulkarm	100	0.0	4.8	65.9	0.0	29.3	0.0	100	18.4	81.6	
Nablus	100	7.8	6.8	50.1	1.5	33.8	0.0	100	21.7	78.3	
Qalqiliya	100	0.0	15.3	38.5	0.0	46.2	0.0	100	44.6	55.4	
Salfit	100	8.0	0.0	24.0	0.0	64.0	4.0	100	17.3	82.7	
Ramallah and Al-Bireh	100	6.6	1.6	35.8	0.0	49.5	6.5	100	33.3	66.7	
Jericho and Al Aghwar	100	0.0	0.0	25.0	0.0	62.5	12.5	100	14.1	85.9	
Jerusalem	100	5.0	15.0	47.5	0.0	20.0	12.5	100	0.0	100	
Bethlehem	100	0.0	4.3	26.0	0.0	67.5	2.2	100	14.5	85.5	
Hebron	100	0.0	2.7	23.8	1.4	69.4	2.7	100	13.8	86.2	
Gaza Strip	100	1.4	7.9	68.3	3.9	17.0	1.5	100	9.5	90.5	
North Gaza	100	0.0	0.0	82.0	3.6	10.8	3.6	100	1.3	98.7	
Gaza	100	0.0	7.0	65.7	6.2	19.6	1.5	100	1.9	98.1	
Deir AL-Balah	100	5.7	9.0	74.0	0.0	11.3	0.0	100	0.0	100	
Khan Yunis	100	0.0	0.0	80.9	0.0	16.2	2.9	100	3.3	96.7	
Rafah	100	3.9	17.0	58.9	3.1	17.1	0.0	100	35.4	64.6	

2008

:38

Table 38: Percentage Distribution of Education Sector Establishments in the Palestinian Territory by Type of Used Container in the Educational Establishment, Sector, Region and Governorate, 2008

Sector\Region\Governorate	Type Of Container					/ /
	Total	Educational Establishment Closed Container	Educational Establishment Open Container	Local Authority Closed Container	Local Authority Open Container	
Higher Education						
Palestinian Territory	100	2.4	4.1	23.4	70.1	
West Bank	100	3.5	6.0	28.0	62.5	
Gaza Strip	100	0.0	0.0	13.7	86.3	
General Education (Schools)						()
Palestinian Territory	100	3.8	12.4	13.5	70.3	
West Bank	100	5.2	12.0	18.5	64.3	
Jenin	100	5.6	10.1	41.9	42.4	
Tubas	100	6.5	12.9	64.5	16.1	
Tulkarm	100	4.7	12.3	10.4	72.6	
Nablus	100	6.0	10.7	23.0	60.3	
Qalqiliya	100	8.1	6.4	27.4	58.1	
Salfit	100	2.5	12.5	2.5	82.5	
Ramallah and Al-Bireh	100	5.2	20.4	18.3	56.1	
Jericho and Al Aghwar	100	0.0	20.0	12.0	68.0	
Jerusalem	100	6.7	6.7	12.2	74.4	
Bethlehem	100	4.2	11.8	31.9	52.1	
Hebron	100	4.5	11.8	5.3	78.4	
Gaza Strip	100	1.6	13.0	4.7	80.7	
North Gaza	100	0.7	16.2	5.5	77.6	
Gaza	100	0.8	10.8	1.9	86.5	
Deir AL-Balah	100	4.0	17.9	4.9	73.2	
Khan Yunis	100	2.0	12.4	7.8	77.8	
Rafah	100	3.4	12.8	12.8	71.0	

Table 39: Percentage Distribution of Education Sector Establishments in the Palestinian Territory by Location of the Used Container, Appropriate of the Size Used Container in the Educational Establishment, Sector, Region and Governorate, 2008

Sector\Region\Governorate	Appropriate of the Size Used Container			Location of the Used Container			/ /
	Total	Not Appropriate	Appropriate	Total	Outside The Educational Establishment Building	Inside The Educational Establishment Building	
Higher Education							()
Palestinian Territory	100	4.9	95.1	100	57.3	42.7	
West Bank	100	7.1	92.9	100	51.8	48.2	
Gaza Strip	100	0.0	100	100	69.2	30.8	
General Education (Schools)							
Palestinian Territory	100	20.8	79.2	100	56.5	43.5	
West Bank	100	21.5	78.5	100	65.9	34.1	
Jenin	100	21.8	78.2	100	53.7	46.3	
Tubas	100	32.3	67.7	100	64.5	35.5	
Tulkarm	100	19.8	80.2	100	69.8	30.2	
Nablus	100	25.8	74.2	100	82.4	17.6	
Qalqiliya	100	27.4	72.6	100	66.1	33.9	
Salbit	100	15.0	85.0	100	62.5	37.5	
Ramallah and Al-Bireh	100	27.3	72.7	100	51.1	48.9	
Jericho and Al Aghwar	100	16.7	83.3	100	70.8	29.2	
Jerusalem	100	15.3	84.7	100	77.5	22.5	
Bethlehem	100	24.8	75.2	100	55.7	44.3	
Hebron	100	18.3	81.7	100	69.5	30.5	
Gaza Strip	100	19.7	80.3	100	39.9	60.1	
North Gaza	100	16.6	83.4	100	22.0	78.0	
Gaza	100	19.8	80.2	100	27.9	72.1	
Deir AL-Balah	100	9.1	90.9	100	47.5	52.5	
Khan Yunis	100	25.6	74.4	100	71.6	28.4	
Rafah	100	29.6	70.4	100	65.1	34.9	

2008

:40

Table 40: Percentage Distribution of Education Sector Establishments in the Palestinian Territory by the Doer of Transporting Solid Waste which Generate by the Educational Establishment, Sector, Region and Governorate, 2008

Sector\Region\Governorate	Doer of Transporting the Waste						/ /
	Total	Others	Private Contractor	UNRWA	Local Authority	The Educational Establishment	
Higher Education							()
Palestinian Territory	100	0.0	0.0	5.5	92.1	2.4	
West Bank	100	0.0	0.0	0.0	96.4	3.6	
Gaza Strip	100	0.0	0.0	17.1	82.9	0.0	
General Education (Schools)							
Palestinian Territory	100	1.2	1.4	8.6	83.0	5.8	
West Bank	100	1.7	1.5	3.1	85.7	8.0	
Jenin	100	1.8	8.2	1.6	85.2	3.2	
Tubas	100	0.0	2.6	10.5	81.6	5.3	
Tulkarm	100	0.7	0.7	4.4	92.7	1.5	
Nablus	100	1.7	0.4	2.9	85.7	9.3	
Qalqiliya	100	1.3	0.0	0.0	94.7	4.0	
Salfit	100	3.4	1.7	0.0	86.4	8.5	
Ramallah and Al-Bireh	100	1.9	2.1	3.6	81.1	11.3	
Jericho and Al Aghwar	100	0.0	0.0	12.0	84.0	4.0	
Jerusalem	100	2.1	0.0	5.2	88.5	4.2	
Bethlehem	100	1.5	0.0	3.8	91.0	3.7	
Hebron	100	1.6	0.0	2.0	82.1	14.3	
Gaza Strip	100	0.4	1.2	19.8	77.3	1.3	
North Gaza	100	0.0	0.7	29.2	68.8	1.3	
Gaza	100	0.9	0.8	6.2	90.0	2.1	
Deir AL-Balah	100	0.0	6.0	53.9	40.1	0.0	
Khan Yunis	100	0.0	0.0	25.6	73.7	0.7	
Rafah	100	0.0	0.0	15.3	84.7	0.0	

2008

:41

Table 41: Percentage Distribution of Education Sector Establishments in the Palestinian Territory by the Final Place and Periodicity of Final Disposal Waste in the Educational Establishment, Sector, Region and Governorate, 2008

Sector\Region\Governorate	Periodicity of Final Waste Disposal				Waste Final Disposal Place				/ /
	Total	5 5 Times and More	4-3 3-4 Times	2-1 1-2 Times	Total	Disposed Randomly	Private Dumping Site	Local Authority Dumping site	
Higher Education									
Palestinian Territory	100	53.3	34.8	11.9	100	0.0	3.4	96.6	
West Bank	100	61.9	21.4	16.7	100	0.0	4.8	95.2	
Gaza Strip	100	31.7	68.3	0.0	100	0.0	0.0	100.0	
General Education (Schools)									()
Palestinian Territory	100	38.4	29.0	32.6	100	1.8	25.8	72.4	
West Bank	100	37.7	29.7	32.6	100	2.2	32.5	65.3	
Jenin	100	35.8	36.2	28.0	100	1.4	51.8	46.8	
Tubas	100	48.6	24.4	27.0	100	5.3	21.1	73.6	
Tulkarm	100	34.6	37.5	27.9	100	1.5	31.9	66.6	
Nablus	100	45.5	25.6	28.9	100	1.3	21.7	77.0	
Qalqiliya	100	50.7	29.3	20.0	100	0.0	29.3	70.7	
Salfit	100	20.3	42.4	37.3	100	3.4	37.3	59.3	
Ramallah and Al-Bireh	100	24.7	24.5	50.8	100	5.2	38.2	56.6	
Jericho and Al Aghwar	100	52.0	12.0	36.0	100	0.0	0.0	100.0	
Jerusalem	100	45.8	21.9	32.3	100	2.1	52.6	45.3	
Bethlehem	100	28.9	30.4	40.7	100	1.5	22.9	75.6	
Hebron	100	39.4	31.8	28.8	100	2.4	22.3	75.3	
Gaza Strip	100	39.7	27.7	32.6	100	0.8	12.3	86.9	
North Gaza	100	50.2	30.0	19.8	100	1.3	16.4	82.3	
Gaza	100	29.0	29.5	41.5	100	0.5	8.0	91.5	
Deir AL-Balah	100	47.8	30.7	21.5	100	0.0	18.0	82.0	
Khan Yunis	100	44.6	20.9	34.5	100	2.2	15.9	81.9	
Rafah	100	51.8	25.3	22.9	100	0.0	11.8	88.2	

2008

:42

Table 42: Daily Average of Generated Waste in Education Sector Establishments in the Palestinian Territory by Sector, Region and Governorate, 2008

Sector\Region\Governorate	Daily Average of Generated Waste in Educational Establishment by Waste Type (Kg / Day)						(/) Daily Average of Generated Waste in Educational Establishment (kg / day)	(/ /) Daily Average of Generated Waste by Student (gram/ student / day)	/ /
	Other Wastes	Metal	Glass	Chemical, Pharmaceutical Wastes	Paper and Cartoon	Food Wastes			
Higher Education									
Palestinian Territory	246	651	528	211	12,537	3,436	17,609	653.9	
General Education (Schools)									()
Palestinian Territory	1,668	750	538	278	29,211	6,593	39,038	43.9	
West Bank	977	470	224	130	16,281	4,283	22,365	48.9	
Jenin	132	31	24	3	2,203	495	2,888	32.4	
Tubas	3	4	1	0	320	99	427	49.4	
Tulkarm	49	31	12	0	1,069	257	1,418	55.5	
Nablus	51	66	17	3	2,028	625	2,790	45.5	
Qalqiliya	38	8	9	5	739	184	983	45.0	
Salfit	12	13	8	8	366	110	517	54.0	
Ramallah and Al-Bireh	142	74	29	8	1,817	479	2,549	32.0	
Jericho and Al Aghwar	124	31	2	4	254	42	457	53.2	
Jerusalem	65	39	17	2	1,545	673	2,341	56.3	
Bethlehem	86	24	10	2	1,486	408	2,016	60.3	
Hebron	275	149	95	95	4,454	911	5,979	51.6	
Gaza Strip	691	280	314	148	12,930	2,310	16,673	44.5	
North Gaza	113	13	67	6	2,502	515	3,216	31.4	
Gaza	313	141	141	87	5,094	972	6,748	33.1	
Deir AL-Balah	80	55	28	0	1,868	172	2,203	35.0	
Khan Yunis	98	51	67	23	2,178	387	2,804	33.0	
Rafah	87	20	11	32	1,288	264	1,702	26.6	

2008

:43

Table 43: Percentage Distribution of Generated Solid Waste Components in Education Sector Establishments in the Palestinian Territory by Type of Generated Solid Waste in the Educational Establishment, Sector, Region and Governorate, 2008

Sector\Region\Governorate	Solid Waste Components							/ /
	Total	Other Wastes	Metal	Glass	Chemical, Pharmaceutical Wastes	Paper and Cartoon	Food Wastes	
Higher Education								
Palestinian Territory	100	1.4	3.7	3.0	1.2	71.2	19.5	
General Education (Schools)								()
Palestinian Territory	100	4.3	1.9	1.4	0.7	74.9	16.8	
West Bank	100	4.4	2.1	1.0	0.6	72.8	19.1	
Jenin	100	4.6	1.1	0.8	0.1	76.3	17.1	
Tubas	100	0.7	0.9	0.2	0.0	75.0	23.2	
Tulkarm	100	3.5	2.2	0.9	0.0	75.3	18.1	
Nablus	100	1.8	2.4	0.6	0.1	72.7	22.4	
Qalqiliya	100	3.9	0.8	0.9	0.5	75.2	18.7	
Salfit	100	2.3	2.5	1.6	1.6	70.8	21.2	
Ramallah and Al-Bireh	100	5.6	2.9	1.1	0.3	71.3	18.8	
Jericho and Al Aghwar	100	27.1	6.8	0.4	0.9	55.6	9.2	
Jerusalem	100	2.8	1.7	0.7	0.1	66.0	28.7	
Bethlehem	100	4.3	1.2	0.5	0.1	73.7	20.2	
Hebron	100	4.6	2.5	1.6	1.6	74.5	15.2	
Gaza Strip	100	4.2	1.7	1.9	0.9	77.6	13.7	
North Gaza	100	3.5	0.4	2.1	0.2	77.8	16.0	
Gaza	100	4.6	2.1	2.1	1.3	75.5	14.4	
Deir AL-Balah	100	3.6	2.5	1.3	0.0	84.8	7.8	
Khan Yunis	100	3.5	1.8	2.4	0.8	77.7	13.8	
Rafah	100	5.1	1.2	0.6	1.9	75.7	15.5	

2008

:44

Table 44: Percentage Distribution of Education Sector Establishments in the Palestinian Territory and of Separated Solid Waste Components by Type of Separation Waste in the Educational Establishment, Sector, Region and Governorate, 2008

Sector\Region\Governorate	Type of Separation Waste							Availability of Separation	/ /
	Total	Other Wastes	Metal	Glass	Chemical, Pharmaceutical Wastes	Paper and Cartoon	Food Wastes		
Higher Education									
Palestinian Territory	100	0.0	0.0	0.0	0.0	86.7	13.3	8.5	
General Education (Schools)									()
Palestinian Territory	100	2.6	1.1	0.5	0.7	72.6	22.5	12.2	
West Bank	100	2.2	1.9	0.8	1.2	69.5	24.4	12.4	
Jenin	100	3.1	0.0	0.1	0.0	76.8	20.0	12.0	
Tubas	100	0.0	0.0	0.0	0.0	81.2	18.8	3.7	
Tulkarm	100	0.0	0.0	0.0	0.0	0.0	100.0	7.9	
Nablus	100	2.9	4.5	0.0	0.0	77.3	15.3	10.9	
Qalqiliya	100	0.5	1.1	0.4	0.0	79.4	18.6	20.3	
Salfit	100	0.0	0.0	0.0	0.0	75.5	24.5	6.7	
Ramallah and Al-Bireh	100	0.0	0.0	0.0	0.0	86.3	13.7	5.0	
Jericho and Al Aghwar	100	6.8	0.9	0.9	0.8	79.8	10.8	4.9	
Jerusalem	100	0.0	0.0	0.0	0.0	0.0	0.0	0.0	
Bethlehem	100	5.5	2.9	0.2	0.0	58.5	32.9	19.8	
Hebron	100	1.1	2.8	0.3	0.3	63.7	31.8	22.4	
Gaza Strip	100	1.6	1.7	1.9	3.6	68.0	23.2	12.7	
North Gaza	100	0.2	0.0	0.0	0.0	70.6	29.2	12.9	
Gaza	100	2.5	0.0	0.4	0.0	79.1	18.0	9.0	
Deir AL-Balah	100	5.4	0.0	0.1	0.0	80.7	13.8	11.6	
Khan Yunis	100	6.7	0.0	0.0	0.0	73.7	19.6	12.6	
Rafah	100	1.6	0.0	0.0	0.0	78.2	20.2	22.7	

2008

:45

Table 45: Percentage Distribution of Education Sector Establishments in the Palestinian Territory by Package Method For Separation Waste in the Educational Establishment, Sector, Region and Governorate, 2008

Sector\Region\Governorate	Package Method For Separation Waste					/ /
	Total	Other	Special Plastic Boxes	Carton Boxes	Special Bags	
Higher Education						()
Palestinian Territory	100	35.7	0.0	0.0	64.3	
General Education (Schools)						
Palestinian Territory	100	3.8	31.0	6.5	58.7	
West Bank	100	4.5	24.3	6.3	64.9	
Jenin	100	2.9	57.6	6.7	32.8	
Tubas	100	0.0	22.1	8.5	69.4	
Tulkarm	100	0.0	33.3	0.0	66.7	
Nablus	100	0.0	20.0	2.5	77.5	
Qalqiliya	100	2.2	27.1	2.2	68.5	
Salfit	100	0.0	10.0	10.0	80.0	
Ramallah and Al-Bireh	100	0.0	0.0	0.0	100	
Jericho and Al Aghwar	100	0.0	32.8	0.0	67.2	
Jerusalem	100	1.0	0.0	2.6	96.4	
Bethlehem	100	2.1	25.5	11.0	61.4	
Hebron	100	9.9	25.7	6.8	57.6	
Gaza Strip	100	0.0	60.0	9.3	30.7	
North Gaza	100	5.7	37.8	15.6	40.9	
Gaza	100	0.0	83.5	0.0	16.5	
Deir AL-Balah	100	0.0	59.4	8.8	31.8	
Khan Yunis	100	6.2	12.3	0.0	81.5	
Rafah	100	0.0	1.0	20.8	78.2	

2008

:46

Table 46: Percentage Distribution of Education Sector Establishments which have Cafeteria in the Palestinian Territory by Location of Cafeteria in the Educational Establishment, Sector, Region and Governorate, 2008

Sector\Region\Governorate	Location of Cafeteria				Existed Cafeteria	/ /
	Total	Outside the Educational Establishment	Inside the Educational Establishment square	Inside the Educational Establishment building		
Higher Education						
Palestinian Territory	100	6.1	33.1	60.8	100	
West Bank	100	8.9	17.9	73.2	100	
Gaza Strip	100	0.0	65.8	34.2	100	
General Education (Schools)						()
Palestinian Territory	100	0.6	55.8	43.6	90.7	
West Bank	100	0.5	46.7	52.8	88.9	
Jenin	100	0.0	57.3	42.7	90.9	
Tubas	100	0.0	52.9	47.1	89.5	
Tulkarm	100	0.8	53.6	45.6	91.9	
Nablus	100	0.0	47.8	52.2	95.5	
Qalqiliya	100	0.0	53.6	46.4	92.0	
Salfit	100	0.0	45.6	54.4	95.0	
Ramallah and Al-Bireh	100	0.5	42.2	57.3	94.0	
Jericho and Al Aghwar	100	4.5	36.4	59.1	84.6	
Jerusalem	100	0.0	31.7	68.3	86.9	
Bethlehem	100	1.7	31.5	66.8	80.9	
Hebron	100	0.8	50.8	48.4	83.0	
Gaza Strip	100	0.9	73.7	25.4	94.4	
North Gaza	100	0.0	78.1	21.9	92.5	
Gaza	100	1.9	72.3	25.8	96.6	
Deir AL-Balah	100	0.0	86.0	14.0	93.4	
Khan Yunis	100	0.0	71.1	28.9	97.2	
Rafah	100	0.0	63.3	36.7	84.2	

2008

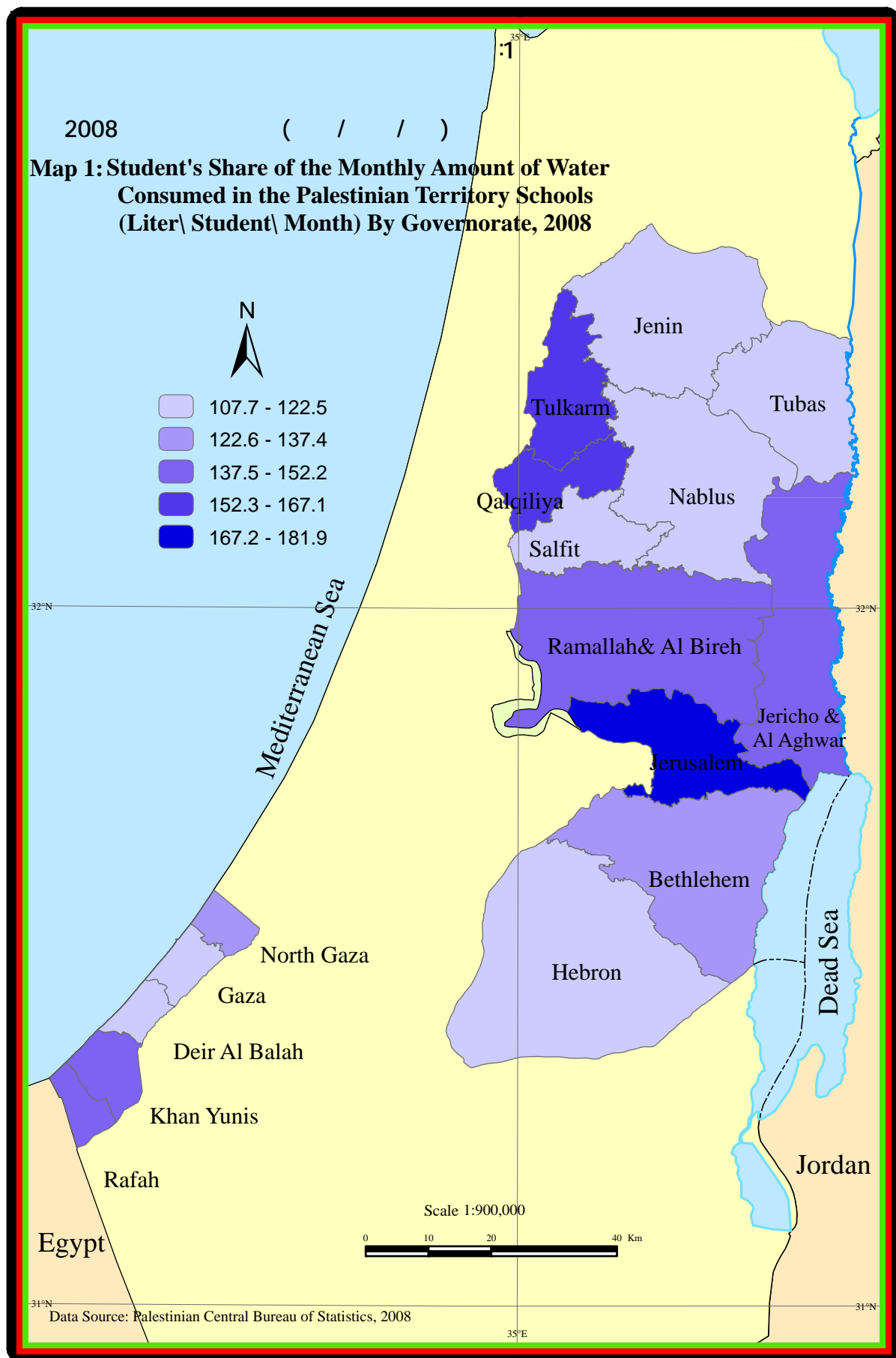
()

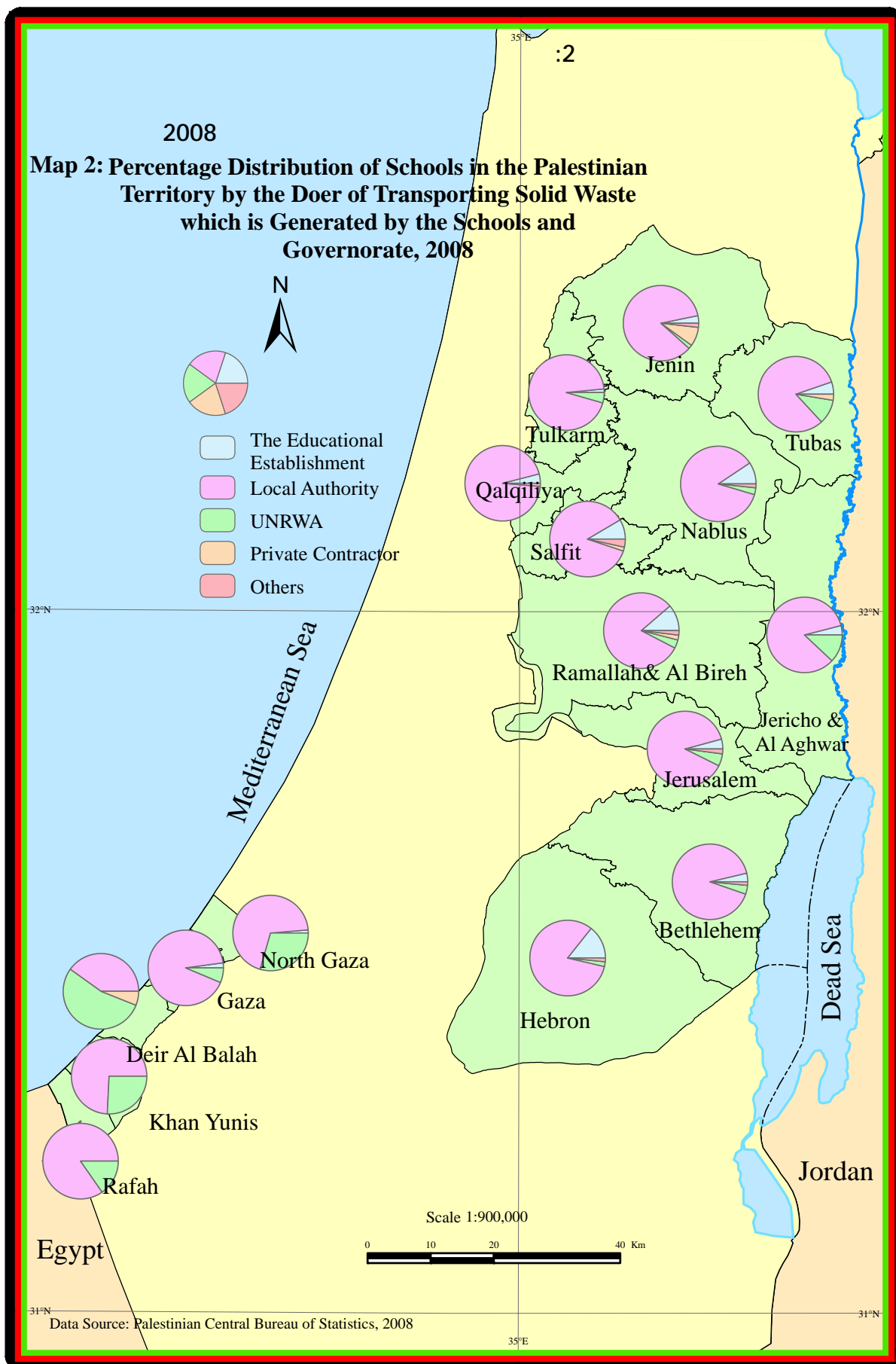
:47

Table 47: Percentage Distribution of Education Sector Establishments which have Cafeteria in the Palestinian Territory by Cafeteria Area (Square Meters) in the Educational Establishment, Sector, Region and Governorate, 2008

Sector\Region\Governorate	Cafeteria Area (Square Meters) ()							Existed Cafeteria	/ /
	Total	100 More Than 100	100 - 81	80 -61	60 - 41	40 - 21	20 20 and Less		
Higher Education									
Palestinian Territory	100	68.2	4.1	6.0	2.4	10.6	8.7	100	
West Bank	100	61.3	6.0	8.8	3.6	15.5	4.8	100	
Gaza Strip	100	82.9	0.0	0.0	0.0	0.0	17.1	100	
General Education (Schools)									()
Palestinian Territory	100	0.9	0.3	0.6	4.1	19.4	74.7	90.7	
West Bank	100	0.8	0.3	0.5	2.9	14.1	81.4	88.9	
Jenin	100	1.1	0.3	0.9	6.4	29.6	61.7	90.9	
Tubas	100	0.0	0.0	0.5	0.5	13.8	85.2	89.5	
Tulkarm	100	0.0	0.0	2.9	0.0	5.9	91.2	91.9	
Nablus	100	2.5	0.0	0.8	1.7	13.3	81.7	95.5	
Qalqiliya	100	0.5	0.0	0.0	4.1	12.0	83.4	92.0	
Salfit	100	1.4	0.0	0.0	0.0	15.9	82.7	95.0	
Ramallah and Al-Bireh	100	0.0	0.0	0.0	5.3	15.8	78.9	94.0	
Jericho and Al Aghwar	100	1.0	0.5	2.0	6.7	17.8	72.0	84.6	
Jerusalem	100	0.0	0.0	0.0	0.0	13.6	86.4	86.9	
Bethlehem	100	2.4	1.2	0.6	1.2	14.5	80.1	80.9	
Hebron	100	0.0	0.9	0.0	0.9	9.2	89.0	83.0	
Gaza Strip	100	0.3	0.3	0.3	3.6	15.4	80.1	94.4	
North Gaza	100	1.6	0.0	0.8	3.8	32.2	61.6	92.5	
Gaza	100	1.1	0.5	1.3	6.7	29.2	61.2	96.6	
Deir AL-Balah	100	1.0	0.0	0.0	9.7	36.6	52.7	93.4	
Khan Yunis	100	0.0	0.0	0.7	5.1	26.4	67.8	97.2	
Rafah	100	2.1	1.3	0.0	8.1	24.6	63.9	84.2	

Maps







**Palestinian National Authority
Palestinian Central Bureau of Statistics**

**Environmental Survey for Education Sector, 2008
Main Findings**

September, 2008

"Cover Price US \$ "

PAGE NUMBERS OF ENGLISH TEXT ARE PRINTED IN SQUARE BRACKETS.
TABLES ARE PRINTED IN THE ARABIC ORDER (FROM RIGHT TO LEFT)

**This document is prepared in accordance with the
standard procedures stated in the Code of Practice for
Palestine Official Statistics 2006**

© September, 2008
All rights reserved.

Suggested Citation:

Palestinian Central Bureau of Statistics, 2008. *Environmental Survey for Education Sector, 2008* . Ramallah- Palestine

All correspondence should be directed to:
Dissemination and Documentation Department\Division of user services
Palestinian Central Bureau of Statistics.
P.O. Box 1647, Ramallah - Palestine.

Tel: (972/970) 2 242 6340
Fax: (972/970) 2 242 6343
E-Mail: diwan@pcbs.gov.ps
Web-site: <http://www.pcbs.gov.ps>

Acknowledgment

The Palestinian Central Bureau of Statistics would like to thank Ministry of Education and Higher Education, UNRWA and Private Educational Institutions, Universities and Colleges to bring this achievement into light.

The funding for the Environmental Survey for Education Sector was provided by the Palestinian National Authority (PNA) and the Core Funding Group (CFG) for 2008. CFG member Representative Office of Norway to the PNA; The Representative Office of the Netherlands to PNA; Swiss Agency for Development and Cooperation (SDC).

On this occasion, the PCBS extends special thanks to the members of the Core Funding Group (CFG), who contributed to funding this survey for their support.

Team Work

- **Technical Commit**
Maen Salhab
Aisar Tumeh
Deema Abbasi
Feda Abu Aishah
Isra' Samoodi
Head of the Committee
- **Report Preparation**
Maen Salhab
- **Graphic Design**
Ahmad Sawalmeh
- **Preliminary Review**
Ammar Abduh
Mahmoud Abd-Alrahman
- **Maps Design**
Nibal Ismael
- **Dissemination Standard**
Hanan Janajreh
- **Final Review**
Mahmoud Jaradat
- **Overall Supervision**
Luay Shabaneh, Ph.D
PCBS President

Preface

PCBS is pleased to release this specialized statistical report about environment situation in education establishments in the Palestinian Territory. This report has been prepared in accordance within the framework of our official efforts for creating and establishing the National Statistical System, and providing the necessary statistics to Palestinian policy-planner and decision-makers in education and higher education, environment and natural resources sector.

As the attention towards environment and the risk of environmental pollution increase, environment statistics become one of the basic fields in the official statistics. The environmental statistics for the education sector is an important subject in the environment statistics due to its negative effects on the health and the environment if not management properly. Many decisions depend on such statistics, especially in the Palestinian Territory where statistics about it is not available.

The Palestinian Central Bureau of Statistics (PCBS) seeks to provide such data through its program for environment statistics that aims at building and updating a comprehensive and accurate statistical database on all environmental subjects. This program aims to provide statistical data as a tool for monitoring and management of the environmental status in the Palestinian Territory.

This report is one of a series of reports that are being published by the PCBS on the Palestinian environment. This report concentrates on the variables of outside effect on education building environment, water consumption in terms of providing sources and characteristics, and management of solid wastes in terms of the separation, transportation, disposal and management of waste water generated in terms of disposal method.

PCBS hopes that the findings of this report will be a reference for planners and decision-makers towards improving the environmental status in the Palestinian Territory.

September, 2008

Luay Shabaneh, Ph.D
President

Table of Contents

Subject	Page
List of Tables	
List of Figures	
List of Maps	
Executive Summary	
Chapter One: Introduction	[21]
1.1 Introduction	[21]
1.2 Report Aims	[21]
1.3 Report Structure	[21]
Chapter Two: Concepts and Definitions	[23]
Chapter Three: Main Findings	[25]
3.1 Outside Environmental Effects	[25]
3.2 Properties of the Educational Building	[26]
3.3 Water Consumption and Water Sources	[27]
3.4 Wastewater	[28]
3.5 Solid Waste Management	[29]
3.6 Environment of the Cafeteria	[29]
Chapter Four: Methodology	[31]
4.1 The Survey Questionnaire	[31]
4.2 Sampling and Sampling Frame	[31]
4.3 Fieldwork	[31]
4.4 Data Processing	[31]
Chapter Five: Data Quality	[33]
5.1 Accuracy of the Data	[33]
5.2 Comparison of the Data	[33]
5.3 Special Technical Notes	[33]
References	[35]
Tables	43
Maps	93

List of Tables

Table	Page
Table 1: Main Selected Indicators about the Activity of the Education Sector Establishments in the Palestinian Territory from Environmental Sides by Sector, 2008	45
Table 2: Percentage Distribution of Education Sector Establishments in the Palestinian Territory by Exposure to Noise, Sector, Region and Governorate, 2008	46
Table 3: Percent of Education Sector Establishments Exposed to Noise Sometimes or Very Often in the Palestinian Territory by the Source of Noise, Sector, Region and Governorate, 2008	47
Table 4: Percentage Distribution of Education Sector Establishments in the Palestinian Territory by the Distance Between the Source of Noise and Educational Establishment, Sector, Region and Governorate, 2008	48
Table 5: Percentage Distribution of Education Sector Establishments in the Palestinian Territory by Exposure to Smell, Sector, Region and Governorate, 2008	49
Table 6: Percent of Education Sector Establishments Exposed to Smell Sometimes or Very Often in the Palestinian Territory by the Source of Smell, Sector, Region and Governorate, 2008	50
Table 7: Percentage Distribution of Education Sector Establishments in the Palestinian Territory by the Distance Between the Source of Smell and Educational Establishment, Sector, Region and Governorate, 2008	51
Table 8: Percentage Distribution of Education Sector Establishments in the Palestinian Territory by Exposure to Dust, Sector, Region and Governorate, 2008	52
Table 9: Percent of Education Sector Establishments Exposed to Dust Sometimes or Very Often in the Palestinian Territory by the Source of Dust, Sector, Region and Governorate, 2008	53
Table 10: Percentage Distribution of Education Sector Establishments in the Palestinian Territory by the Distance Between the Source of Dust and Educational Establishment, Sector, Region and Governorate, 2008	54
Table 11: Percentage Distribution of Education Sector Establishments in the Palestinian Territory by Exposure to Smoke, Sector, Region and Governorate, 2008	55
Table 12: Percent of Education Sector Establishments Exposed to Smoke Sometimes or Very Often in the Palestinian Territory by the Source of Smoke, Sector, Region and Governorate, 2008	56
Table 13: Percentage Distribution of Education Sector Establishments in the Palestinian Territory by the Distance Between the Source of Smoke and Educational Establishment, Sector, Region and Governorate, 2008	57

Table		Page
Table 14:	Percentage Distribution of Education Sector Establishments in the Palestinian Territory by Material of External Walls of the Educational Establishment, Sector, Region and Governorate, 2008	58
Table 15:	Percentage Distribution of Education Sector Establishments in the Palestinian Territory by the Main Source of Electricity in the Educational Establishment, Sector, Region and Governorate, 2008	59
Table 16:	Percentage Distribution of Education Sector Establishments in the Palestinian Territory by Number of Hours of Electricity Service in the Educational Establishment, Sector, Region and Governorate, 2008	60
Table 17:	Percentage Distribution of Education Sector Establishments in the Palestinian Territory by Existence of Adequate Lighting in the Class Rooms in the Educational Establishment, Sector, Region and Governorate, 2008	61
Table 18:	Percentage Distribution of Education Sector Establishments in the Palestinian Territory the Direction of the Windows in the Majority of Class Rooms in the Educational Establishment, Sector, Region and Governorate, 2008	62
Table 19:	Percentage Distribution of Education Sector Establishments in the Palestinian Territory by Available of Ventilation (Fans, Conditioners) in the Class Rooms in the Educational Establishment, Sector, Region and Governorate, 2008	63
Table 20:	Percentage Distribution of Education Sector Establishments in the Palestinian Territory by Available of Heating in the Class Rooms in the Educational Establishment, Sector, Region and Governorate, 2008	64
Table 21:	Percentage Distribution of Education Sector Establishments in the Palestinian Territory by Energy Source of Heating in the Class Rooms in the Educational Establishment, Sector, Region and Governorate, 2008	65
Table 22:	Percentage Distribution of Education Sector Establishments in the Palestinian Territory by the Main Source of Obtaining Water in the Educational Establishment, Sector, Region and Governorate, 2008	66
Table 23:	Monthly Average of Quantity of Consumed Water in Education Sector Establishments in the Palestinian Territory, Student's Share of the Monthly Amount of Water Consumed, Student's Share of the Water Taps by Sector, Region and Governorate, 2008	67
Table 24:	Percentage Distribution of Education Sector Establishments in the Palestinian Territory by Evaluate the Quality of water, Source of Obtaining Water, Sector, Region and Governorate, 2008	68
Table 25:	Percentage Distribution of Education Sector Establishments in the Palestinian Territory by Number of Water Taps in the Class Rooms in the Educational Establishment, Sector, Region and Governorate, 2008	69

Table	Page
Table 26: Percentage Distribution of Education Sector Establishments in the Palestinian Territory by Availability of Water Tanks and there Numbers in the Educational Establishment, Sector, Region and Governorate, 2008	70
Table 27: Percentage Distribution of Education Sector Establishments Which have Water Tanks in the Palestinian Territory by the Number of Times Cleaning the Water Tanks in Year in the Educational Establishment, Sector, Region and Governorate, 2008	71
Table 28: Percentage Distribution of Education Sector Establishments Which have Water Tanks in the Palestinian Territory by the Number of Times Check the Water Tanks in Year in the Educational Establishment, Sector, Region and Governorate, 2008	72
Table 29: Percentage Distribution of Education Sector Establishments in the Palestinian Territory by Wastewater Disposal Method in the Educational Establishment, Sector, Region and Governorate, 2008	73
Table 30: Percentage Distribution of Education Sector Establishments in the Palestinian Territory by Number of Toilets in the Educational Establishment, Sector, Region and Governorate, 2008	74
Table 31: Percentage Distribution of Education Sector Establishments in the Palestinian Territory by the Distance Between the Water Taps and Toilets (Meter) in the Educational Establishment, Sector, Region and Governorate, 2008	75
Table 32: Percentage Distribution of Education Sector Establishments which have Porous Cesspit and Water Well in the Palestinian Territory by the Distance Between the Water Well and Porous cesspit (Meter) in the Educational Establishment, Sector, Region and Governorate, 2008	76
Table 33: Percentage Distribution of Education Sector Establishments which have Porous Cesspit and Water Well in the Palestinian Territory by Location of Water Well and Porous Cesspit in the Educational Establishment, Sector, Region and Governorate, 2008	77
Table 34: Percentage Distribution of Education Sector Establishments Which Did not Collect the Waste Daily in the Palestinian Territory by Periodicity of Waste Collection in Week in the Educational Establishment, Sector, Region and Governorate, 2008	78
Table 35: Percentage Distribution of Education Sector Establishments in the Palestinian Territory by Package Method for Collected Waste in the Educational Establishment, Sector, Region and Governorate, 2008	79
Table 36: Percentage Distribution of Education Sector Establishments in the Palestinian Territory by Responsibility of Waste Collection in the Educational Establishment, Sector, Region and Governorate, 2008	80
Table 37: Percentage Distribution of Education Sector Establishments in the Palestinian Territory by Method of Primary Waste Disposal in the Educational Establishment, Sector, Region and Governorate, 2008	81

Table		Page
Table 38:	Percentage Distribution of Education Sector Establishments in the Palestinian Territory by Type of Used Container in the Educational Establishment, Sector, Region and Governorate, 2008	82
Table 39:	Percentage Distribution of Education Sector Establishments in the Palestinian Territory by Location of the Used Container, Appropriate of the Size Used Container in the Educational Establishment, Sector, Region and Governorate, 2008	83
Table 40:	Percentage Distribution of Education Sector Establishments in the Palestinian Territory by the Doer of Transporting Solid Waste which Generate by the Educational Establishment, Sector, Region and Governorate, 2008	84
Table 41:	Percentage Distribution of Education Sector Establishments in the Palestinian Territory by the Final Place and Periodicity of Final Disposal Waste in the Educational Establishment, Sector, Region and Governorate, 2008	85
Table 42:	Daily Average of Generated Waste in Education Sector Establishments in the Palestinian Territory by Sector, Region and Governorate, 2008	86
Table 43:	Percentage Distribution of Generated Solid Waste Components in Education Sector Establishments in the Palestinian Territory by Type of Generated Solid Waste in the Educational Establishment, Sector, Region and Governorate, 2008	87
Table 44:	Percentage Distribution of Education Sector Establishments in the Palestinian Territory and of Separated Solid Waste Components by Type of Separation Waste in the Educational Establishment, Sector, Region and Governorate, 2008	88
Table 45:	Percentage Distribution of Education Sector Establishments in the Palestinian Territory by Package Method For Separation Waste in the Educational Establishment, Sector, Region and Governorate, 2008	89
Table 46:	Percentage Distribution of Education Sector Establishments which have Cafeteria in the Palestinian Territory by Location of Cafeteria in the Educational Establishment, Sector, Region and Governorate, 2008	90
Table 47:	Percentage Distribution of Education Sector Establishments which have Cafeteria in the Palestinian Territory by Cafeteria Area (Square Meters) in the Educational Establishment, Sector, Region and Governorate, 2008	91

List of Figures

Figure		Page
Figure 1:	Percent of Educational Establishments Exposure Sometimes or Very Often to Outside Effects, 2008	[25]
Figure 2:	Percentage Distribution of Education Sector Establishments in the Palestinian Territory by Material of External Walls of the Educational Establishment, Sector, 2008	[26]
Figure 3:	Percentage Distribution of Education Sector Establishments in the Palestinian Territory by the Main Source of Obtaining Water in the Educational Establishment, Sector, 2008	[27]
Figure 4:	Percentage Distribution of Education Sector Establishments in the Palestinian Territory by Number of Water Taps in the Class Rooms in the Educational Establishment and Sector, 2008	[26]
Figure 5:	Percentage Distribution of Education Sector Establishments in the Palestinian Territory by Wastewater Disposal Method in the Educational Establishment and Sector, 2008	[30]
Figure 6:	Percentage Distribution of Education Sector Establishments in the Palestinian Territory by Periodicity of Final Disposal Waste in the Educational Establishment and Sector, 2008	[27]
Figure 7:	Percentage Distribution of Education Sector Establishments in the Palestinian Territory by Cafeteria Area (Square Meters) in the Educational Establishment and Sector, 2008	[30]

List of Maps

Map		Page
Map 1:	Student's Share of the Monthly Amount of Water Consumed in the Palestinian Territory Schools (Liter\ Student\ Month) By Governorate, 2008	95
Map 2:	Percentage Distribution of Schools in the Palestinian Territory by the Doer of Transporting Solid Waste which is Generated by the Schools and Governorate, 2008	97

Executive Summary

Results show that 23 % of higher education establishments in Palestinian Territory reported that they are exposed to noise (very often and sometimes), and 31.3% of schools in Palestinian Territory reported that they are exposed to noise (very often and sometimes). 14.9% of higher education establishments in reported that they are exposed to smells (very often and sometimes), and 23.4% of schools in reported that they are exposed to smells (very often and sometimes). 17.3% of higher education establishments in reported that they are exposed to dust (very often and sometimes), and 22.9% of schools reported that they are exposed to dust (very often and sometimes). 6.6% of higher education establishments reported that they are exposed to smoke (very often and sometimes), and 15.6% of schools in reported that they are exposed to smoke (very often and sometimes).

Results show that 48.6% of higher education establishments in Palestinian Territory reported that the material of external walls of there Building are cleaned stone, and 40.2% of schools reported that the material of external walls of there building are stone and concrete. And results show that all higher education establishments provided with electricity from public network, and 98.7% of schools provided with electricity from public network.

Results show that 87.8% of higher education establishments in Palestinian Territory provided with water from water network, and 89% of schools provided with water from water network.

Results show that the monthly average of quantity of consumed water in higher education establishments in Palestinian Territory is 20,176 cubic meter, and student's share of the monthly amount of water consumed in the higher education establishments is 277 Liter.

And for the Palestinian schools the results show that monthly average of quantity of consumed water in schools is 167,147 cubic meter, and student's share of the monthly amount of water consumed in the schools is 129 liter.

Results show that 72.9% of higher education establishments in the Palestinian Territory disposal of wastewaters through the sewerage network. For schools in the Palestinian Territory 46.5% of the schools disposal of wastewaters through the sewerage network, and 41.6% of the schools disposal of wastewaters by Porous Cesspit, and 11.4% of the schools disposal of wastewaters by Tight Cesspit..

Results show that daily average of generated solid waste from higher education establishments in the Palestinian Territory are 17,609 kg, 71.2% of these waste was paper and cartoon, and the daily average of generated solid waste by student is 653.9 grams. And the daily average of generated solid waste from schools in the Palestinian Territory is 39,038 kg, 74.1% of these wastes were paper and cartoon, and the average of waste generated daily by student is 43.9 grams.

Chapter One

Introduction

1.1 Introduction

Environmental statistics in the educational establishments are very interested and these statistics are an important instrument to make decisions, planning, and draw the outlines for environment. And relating to infrequency of data about this subject in the Palestinian Territory, the Palestinian Central Bureau of Statistics (PCBS) builds up and develop a database about the environment in the educational establishments.

For all of this PCBS implemented a specialist survey on the environmental of education sector through administrative records during the period 01/04/2008 to 01/07/2008, the survey covered all educational establishments in Palestinian Territory of which overseen by (governmental sector, UNRWA and private sector Non-governmental organizations).

1.2 Report Aims

The main objective of this report is to provide statistical data about the educational establishments on the following indicators:

- Outside Environmental Effects (Noise, Smell, Dust, Smoke)
- Properties of the Educational Building
- Water Consumption and Water Sources.
- Wastewater
- Solid Waste Management
- Environment of the Cafeteria.

1.3 Report Structure

This report is divided into five chapters; the first chapter contains the introduction, aims and report structure. The second chapter contains the concepts and definitions in this report. The third chapter defines the main findings of the report. The fourth chapter explains the methodology of collecting and tabulated. The fifth chapter handles data quality through spreading the main notes on the data and estimations of the data sources of this report.

Chapter Two

Concepts and Definitions

Solid Waste Disposal:

Ultimate deposition or placement of refuse that is not salvaged or recycled.

Wastewater:

Used water, typically discharged into the sewage system. It contains matter and bacteria in solution or suspension.

Dumping Site:

Site used to dispose of solid wastes without environmental control.

Solid Waste:

Useless and sometimes hazardous material with low liquid content, solid wastes include municipal garbage, industrial and commercial waste, sewage sludge, wastes resulting from agricultural and animal husbandry operations and other connected activities, demolition wastes and mining residues

Pharmaceutical Waste:

This includes pharmaceutical products, drugs and chemicals, which have been returned from wards, have been spilled or soiled, are out of date or contaminated, or are to be discarded for any reason.

Waste Collection:

Collection or transport of waste to the place of treatment or discharge by municipal services or similar institutions, or by public or governmental and non-governmental corporations, specialized enterprises or general government. Collection of municipal waste may be selective, that's to say carried out for a specific type of product, or undifferentiated, in other words, covering all kinds of waste at the same time.

Open Burning:

Out door burning of wastes such as lumber, scrapped cars, textiles, sawdust and so forth.

Cesspit:

A well or a pit in which night soil and other refuse is stored, constructed with either tight or porous walls.

Sewage Network:

System of collectors, pipelines, conduits and pumps to evacuate wastewater (rainwater, domestic and other wastewater) from any of the location paces generation either to municipal sewage treatment plant or to a location place where wastewater is discharged.

Smoke:

Particles suspended in air after incomplete combustion of materials.

Noise:

Audible sound from traffic, construction, and so on that may generate unpleasant and harmful effects (hearing loss). It is measured in decibels.

Dust:

Particles light enough to be suspended in the air.

Water quality:

The water without color, taste, smell or precipitates is considered as good water, the water with some color or taste or smell or precipitates but still acceptable from the respondent's point of view is considered to be fairly good water, and the water with some color or taste or smell or precipitates to an extent that is not acceptable from the respondent's point of view is considered to be bad water.

Materials of External Walls:

The main material used in the construction of external sides of walls could be one of the following elements:

1– Cleaned Stone, 2– Stone and Concrete, 3– Concrete, 4– Cement Blocks, 5– Adobe Clay, 6– Old Stone, 7– Other. **Old stones:** are used in the construction of old buildings in ancient parts of urban and rural areas. Construction materials could be comprised of more than one element. Nevertheless and for the purposes of the Survey, “the construction material” refers to the main material used in the construction of external walls. Item no. **(Others)** could refer to wood, straw, fabric, hyrax, hair, zinc, tin, ...etc. The main material used in the construction of external sides of walls and it could comprise cleaned stone, stone and concrete, concrete, cement blocks, adobe clay, old stone or other.

Public Network (Electricity):

A net of pipes for the purpose of providing electricity to localities. It normally belongs to a municipality, the council or to a private company.

A set of special symb

ols was used in the tables of this report

(-): Nil

(0): The value is less than (0.05)

Main Findings

3.1 Outside Environmental Effects

Noise

Results show that 7.4% of higher education institutions in Palestinian Territory reported that they are exposed to noise very often, and 15.6% of them are exposed to noise sometimes. Industrial activity is the source of noise for 65.6% of the higher education institutions that are exposed to noise in the Palestinian Territory, while 43.7% of them reported that the distance between the source of noise and their institution is less than 100 meters.

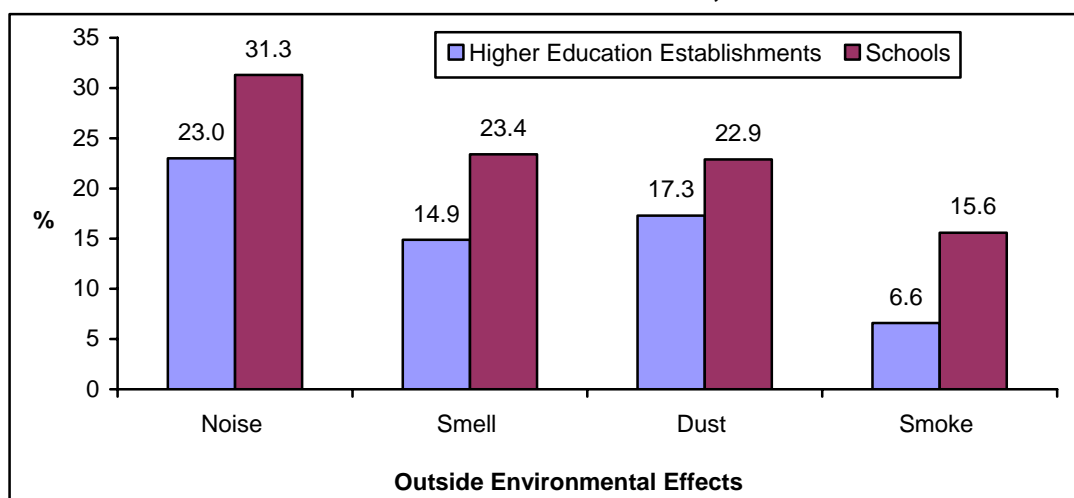
The results show that 12.9% of schools in the Palestinian Territory reported that they are exposed to noise very often, and 18.4% of schools are exposed to noise sometimes. Israeli military activity is the source of noise for 67.2% of the schools that are exposed to noise in the Palestinian Territory, while 64.3% of schools reported that the distance between the source of noise and their schools is less than 100 meters.

Smells

Results show that 3.2% of higher education establishments in the Palestinian Territory reported that they are very often exposed to smells, and 11.7% of them are exposed to smells sometimes. Waste container is the source of smells for 28.7% of the higher education establishments that are exposed to smells in the Palestinian Territory, while 56.4% of them reported that the distance between the source of smells and their establishment is less than 100 meters.

The results show that 11.0% of schools in the Palestinian Territory reported that they are exposed to smells very often, and 12.4% of schools are exposed sometimes to smells. Dump sites are the source of smells for 71.9% of the schools that are exposed to smells in the Palestinian Territory; while 63.2% of schools reported that the distance between the source of smells and their schools is less than 100 meters.

Figure 1: Percent of Educational Establishments Exposure Sometimes or Very Often to Outside Effects and Sector, 2008



Dust

Results show that 5.7% of higher education establishments in Palestinian Territory reported that they are very often exposed to dust, and 11.6% of them are exposed to dust sometimes. Unpaved roads are the source of dust for 80.6% of the higher education establishments that are exposed to dust in the Palestinian Territory; 47.8% of them reported that the distance between the source of dust and their establishment is less than 100 meters.

The results show that 9.8% of schools in the Palestinian Territory reported that they are very often exposed to dust, and 13.1% of schools are exposed to dust sometimes. Unpaved roads are the source of dust for 59.2% of the schools that are exposed to dust in the Palestinian Territory, while 63.9% of schools reported that the distance between the source of dust and their schools is less than 100 meters.

Smoke

Results show that 3.3% of higher education establishments in the Palestinian Territory reported that they are exposed to smoke very often, and 3.3% of them are exposed to smoke sometimes. The main road is the source of smoke for 34.1% of the higher education establishments that are exposed to smoke in the Palestinian Territory, while 46.9% of them reported that the distance between the source of smoke and their establishment is less than 100 meters.

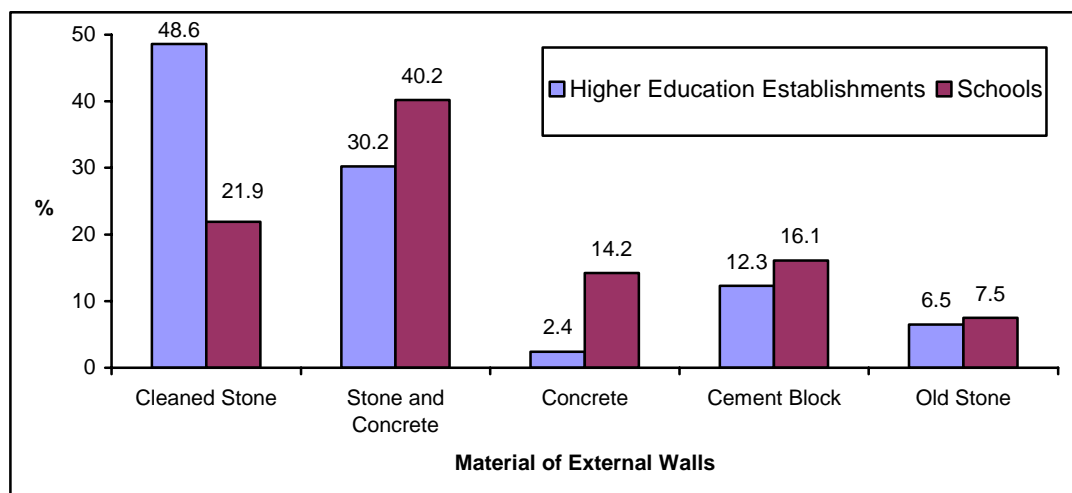
The results show that 5.9% of schools in the Palestinian Territory reported that they are very often exposed to smoke, and 9.7% of schools are exposed to smoke sometimes. Dumping sites are the source of smoke for 49.2% of the schools that are exposed to smoke in the Palestinian Territory, while 64.1% of schools reported that the distance between the source of smoke and their schools is less than 100 meters.

3.2 Properties of the Educational Building

Material of External Walls

Results show that 48.6% of higher education establishments in Palestinian Territory reported that the material of external walls of their buildings are cleaned stone, and 40.2% of schools reported that the material of external walls of their buildings are stone and concrete.

Figure 2: Percentage Distribution of Education Sector Establishments in the Palestinian Territory by Material of External Walls of the Educational Establishment and Sector, 2008



Electricity Source

Results show that all higher education establishments in the Palestinian Territory are provided with electricity from public networks, and 98.7% of schools were provided with electricity from public networks, 1.0% of schools provided with electricity from private generators and 0.3% of schools in the Palestinian Territory reported that they do not have electricity in their schools.

Lighting of the Class Rooms

Results show that all higher education establishments in the Palestinian Territory have adequate lighting in their class rooms, and 90.8% of schools have adequate lighting in their class rooms.

The Direction of Windows in the Class Rooms

Results show that 43.9% of higher education establishments in Palestinian Territory reported that the windows in the majority of class rooms face all directions, and 46.1% of schools reported that the windows in the majority of class rooms face all directions.

Available of Ventilation in the Class Rooms

Results show that 87.4% of higher education establishments in Palestinian Territory reported that they have ventilation (Fans, Conditioners) in the class rooms, and 32.3% of schools reported that they have ventilation in the class rooms.

Available of Artificial Heating in the Class Rooms

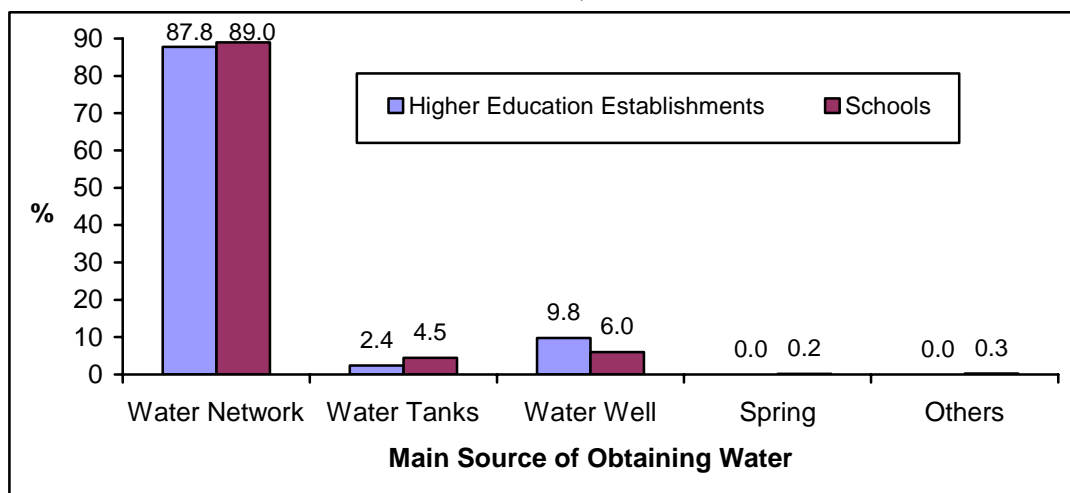
Results show that 65.9% of higher education establishments in Palestinian Territory reported that they have artificial heating in the class rooms, and 10.3% of schools reported that they have artificial heating in the class rooms.

3.3 Water Consumption and Water Sources

Main Sources of Water

Results show that 87.8% of higher education establishments in the Palestinian Territory are provided with water from a water network, and 89.0% of schools are provided with water from a water network.

Figure 3: Percentage Distribution of Education Sector Establishments in the Palestinian Territory by the Main Source of Obtaining Water in the Educational Establishment, Sector, 2008



Quantity of Consumed Water

Results show that the monthly average of quantity of water consumed in higher education establishments in the Palestinian Territory is 20,176 cubic meters, and one student's share of the monthly amount of water consumed in higher education establishments is 277 liters.

As for Palestinian schools, the results show that monthly average of quantity of water consumed in schools is 167,147 cubic meters, and one student's share of the monthly amount of water consumed in the schools is 129 liters.

Water Tanks

Results show that 93.5% of higher education establishments in the Palestinian Territory have a water tanks in their establishments, and 97.6% of the schools have a water tanks in their establishments.

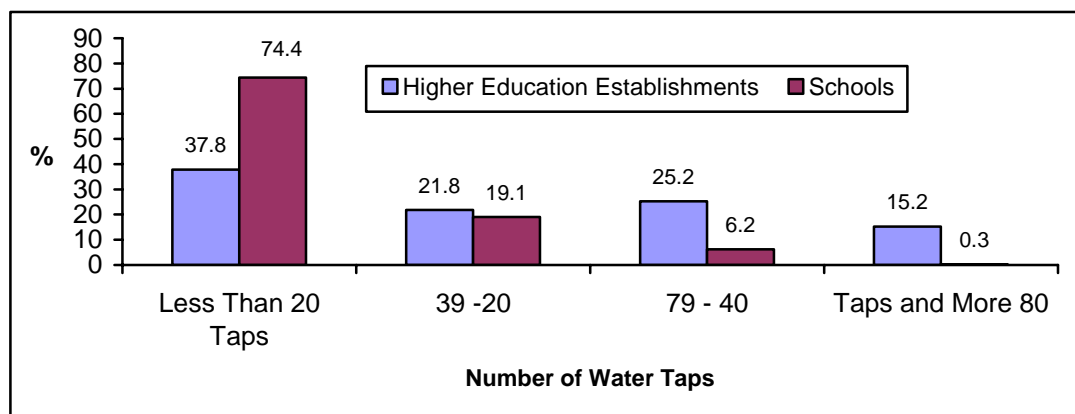
Evaluate the Quality of water by The Source of Obtaining Water

Survey results indicate that 81.2% of higher education establishments in the Palestinian Territory believe that the water supplied from the public water network is good. For schools in the Palestinian Territory 74.5% of the schools believe that water supplied from the public water network is good.

Water Taps

Results show that every 100 students in higher education establishments in Palestinian Territory from taps water share 9 taps, and that every 1000 students in Palestinian schools share 42 taps.

Figure 4: Percentage Distribution of Education Sector Establishments in the Palestinian Territory by Number of Water Taps in the Class Rooms in the Educational Establishment and Sector, 2008

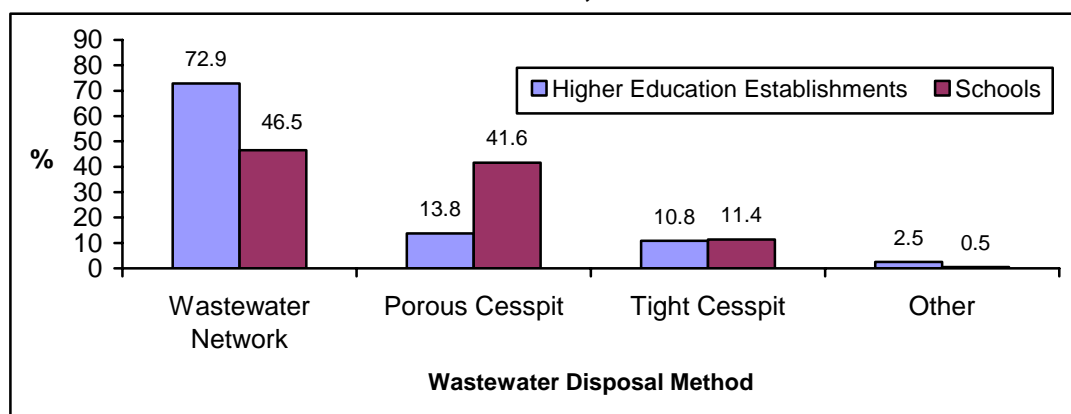


3.4 Wastewater

Wastewater Disposal Method

Results show that 72.9% of higher education establishments in the Palestinian Territory dispose of wastewater through the sewerage network. For schools in the Palestinian Territory 46.5% of the schools dispose of wastewater through the sewerage network; 41.6% of the schools dispose of wastewater by porous cesspits; and 11.4% of the schools dispose of wastewater by tight cesspit.

Figure 5: Percentage Distribution of Education Sector Establishments in the Palestinian Territory by Wastewater Disposal Method in the Educational Establishment and Sector, 2008



3.5 Solid Waste Management

The Quantity of Solid Waste Generated

Results show that the daily average of generated solid waste from higher education establishments in the Palestinian Territory are 17,609 kg. 71.2% of this waste was paper and carton; the daily average amount of solid waste generated by one student is 653.9 grams. The daily average amount of solid waste generated from schools in the Palestinian Territory is 39,038 kg, 74.9% of this waste was paper and carton; the average amount of waste generated daily by one student is 43.9 grams.

Solid Waste Collection

Results show that all higher education establishments in the Palestinian Territory (100%) collect generated solid waste on a daily basis, of which 64.5% used special bags to collect waste. The results indicate that all higher education establishments collect waste in containers.

55.0% of schools collect the generated solid waste on a daily basis; 28.9% of schools collect the waste by using special bags, and 84.8% of schools in the Palestinian Territory collect waste in containers.

Final Disposal of Solid Waste

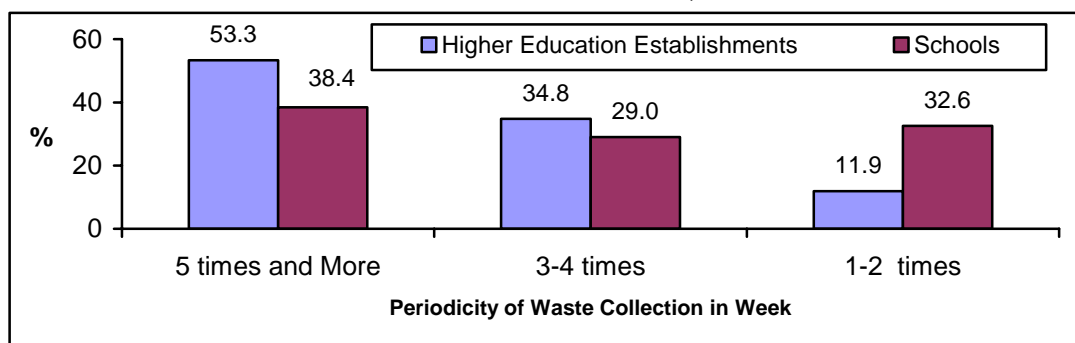
The results indicate that 92.1% of higher education establishments in the Palestinian Territory transfer the collected waste to a final disposal place by local authorities. 83.0% of schools in the Palestinian Territory transfer the collected waste to a final disposal place by local authorities.

Solid Waste Separation

Results show that 8.5% of higher education establishments in the Palestinian Territory separate the generated solid waste, and 86.7% of higher education establishments separate paper and carton. 64.3% of higher education establishments using special bags to separate the generated solid waste.

12.2% of schools separate generated solid waste, and 72.6% of the separated waste is paper and carton. 58.7% of schools use special bags to separate the generated solid waste.

Figure 6: Percentage Distribution of Education Sector Establishments in the Palestinian Territory by Periodicity of Final Disposal Waste in the Educational Establishment and Sector, 2008

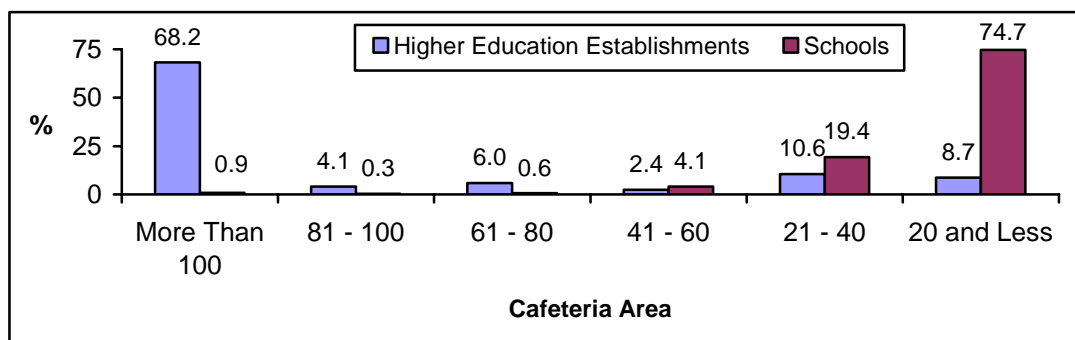


3.6 Environment of the Cafeteria

Results showed that all higher education establishments in the Palestinian Territory have a cafeteria. The cafeteria of 60.8% of higher education establishments is located inside the establishments 68.2% of higher education establishments the area of the cafeteria is more than more than 100 square meters.

90.7% of schools have a cafeteria. The cafeteria of 43.6% of the schools is located inside the schools, and 74.7% of school cafeterias have an area of less than 20 square meters.

Figure 7: Percentage Distribution of Education Sector Establishments in the Palestinian Territory by Cafeteria Area (Square Meters) in the Educational Establishment and Sector, 2008



Methodology

This chapter presents the scientific methodology used in the planning and implementation of environmental survey for the education sector including the design of the survey tools and methods of collecting, processing and analysis of data.

4.1 The Survey Questionnaire

The environmental questionnaire was designed in accordance with similar country experiments and according to international standards and recommendations for the most important indicators, taking into account the special situation of the Palestinian Territory.

4.2 Sampling and Sampling Frame

Target Population:

The target population of this survey is all educational establishments, as follows:

1. Educational establishments belonging to Ministry of Education and Higher Education.
2. Educational establishments belonging to UNRWA.
3. Educational establishments belonging to Non-governmental organizations.
4. Educational establishments belonging to the Private sector.

Sampling Frame

The frame for all establishments in the education sector is updated annually by administrative records of the Ministry of Education and Higher Education.

4.3 Fieldwork:

Dedicated fieldwork is the only way to obtain the needed data from the primary source.

Field operations started 01/04/2008 and had lasted until 01/07/2008. All data collected through the questionnaire was provided to PCBS for further operations such as data processing and data entry.

Fieldwork directorate follow-up process to collect all questionnaires of higher education establishments and schools, where it was within two mechanisms:

1. Higher education: the questionnaires were sent directly to establishments to fill them and sent the questionnaires to PCBS.
2. Schools: heads of planning division and school health division in all education departments were trained, and provided with a number of questionnaires, where they follow up fieldwork in there area, after filled the questionnaires by schools the questionnaires were sent to the PCBS.

4.4 Data Processing

The data processing stage consisted of the following operations:

Editing before data entry

All questionnaires were edited again in the office using the same instructions adopted for editing in the field

Data entry

Then data was entered into the computer, using Microsoft Access. The data entry program was prepared to satisfy a number of requirements such as:

- Duplication of the questionnaire on the computer screen.
- Logical and consistency check of data entered.
- Possibility for internal editing of questions answered.
- Maintaining a minimum of digital data entry and fieldwork errors.
- User-friendly handling.
- Possibility of transferring data into another format to be used and analyzed using other analytical statistical systems such as SAS and SPSS.

Chapter Five

Data Quality

5.1 Accuracy of the Data

Two types of errors affected the quality of the report's data, sampling and non sampling errors. Sampling errors are measurable and very limited in this report, because the study covered all educational establishments in the Palestinian Territory. The non-sampling errors could not be determined easily, due to the diversity of sources (e.g. the interviewers, respondents, editors, coders, data entry operators...etc). To minimize such errors data was edited before and after the entry process.

Comprehensiveness

One of the most important goals to publish annual reports to the statistics of the environment for the education sector is to create a time series tables for the most important indicators relating to environmental conditions and circumstances of this important sector in the Palestinian Territory.

Notes that the report does not contain data on previous years since it implemented for the first time. This report covers as the most important environment-related indicators for the educational sector in 2008.

As for the geographic database, notes that schools are covered in full for all provinces, but data for higher education establishments were lacking in some governorates of establishments of higher education, noting that the data contained on higher education has been deployed in the region (the West Bank, Gaza Strip).

5.2 Comparison of the Data

Survey carried out for the first time, so there is no previous data to be compared, but the results were compared with data for the World Health Organization.

5.3 Special Technical Notes

Can be summarized as sources of some non-statistical errors that have emerged during the implementation of the survey with the following:

1. Differentiation on understanding the questionnaires.
2. Variation in individual measurements of some different issues such as the amount of water consumed and the amount of solid waste generated has been appreciated, in addition to questions relating to estimates of sizes, distances and time periods.

References

1. World Health Organization, 1994. *Managing Health Care Waste in Developing Countries*, Geneva - Switzerland.
2. World Health Organization, 1999. *Safe management of waste form health-care activities*, Dr Adrian Coad.
3. United Nations, 1997. *Glossary of Environment Statistics. Series F, NO.67*. New York- USA.