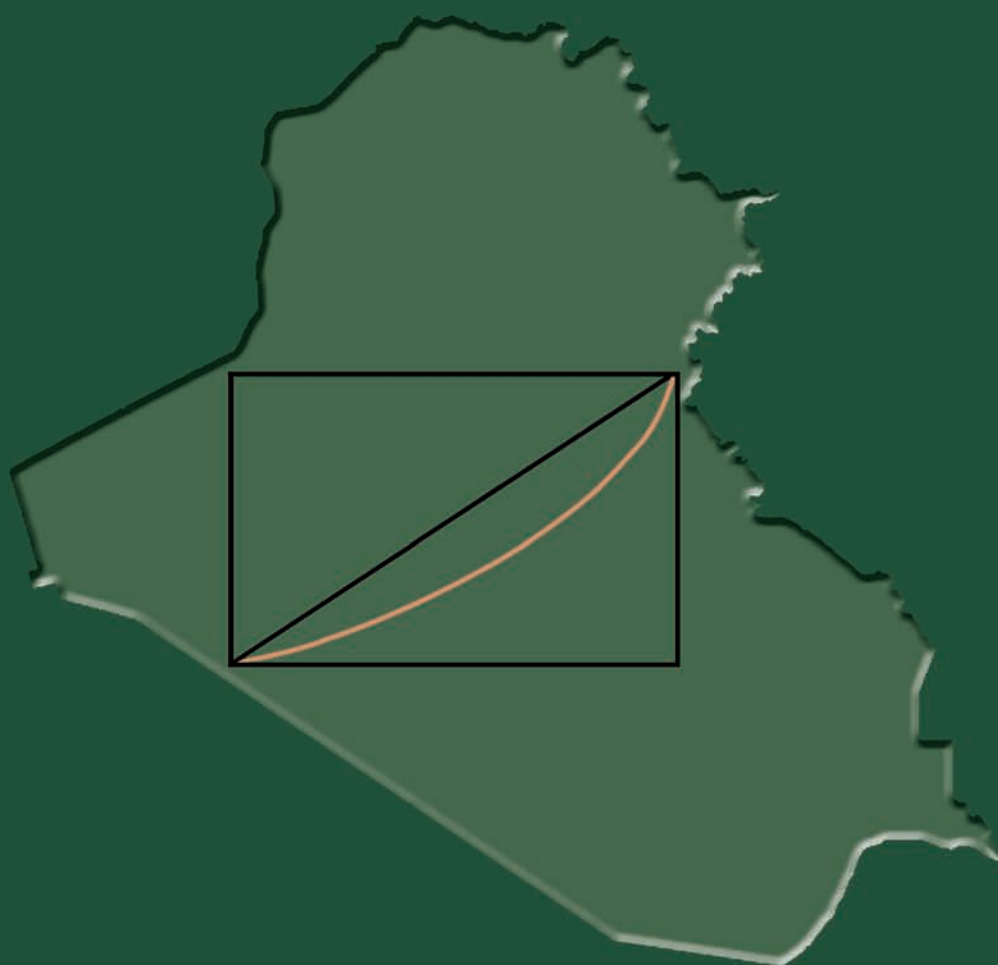


IRAQ HOUSEHOLD SOCIO-ECONOMIC SURVEY

IHSES-2007



TABULATION REPORT



Central Organization for Statistics
and Information Technology



Kurdistan Region Statistics Organization



The World Bank

IRAQ HOUSEHOLD SOCIO-ECONOMIC SURVEY IHSES — 2007

TABULATION REPORT



COSIT



KRSO



The World Bank

This publication is a joint product of the Central Organization for Statistics and Information Technology (COSIT) of Iraq, the Kurdistan Region Statistics Organization (KRSO), and the International Bank for Reconstruction and Development/The World Bank. The findings, interpretations, and conclusions expressed herein do not necessarily reflect the views of the Executive Directors of the World Bank or the governments they represent.

Dedicated to the strength and the memory of

Louay Haqqi Rashid,

Manager of the IHSES Operations Room.

*His life, but not his spirit,
was taken while managing this survey.*

© Copyright 2008 COSIT

All rights reserved

Electronic copies of this publication can be downloaded at no charge from
www.cosit.gov.iq and www.worldbank.org/iq

CDs are available at no charge from
Department of Public Relations and Dissemination
Central Organization for Statistics and Information Technology (COSIT)
Elwiya, near Elwiya Communications Office
Baghdad, Iraq

Printed by National Press Amman - Jordan

TABULATION REPORT

The Iraq Household Socio-Economic Survey
2007

Volume I: Objectives, Methodology, and Highlights

Volume II: Data Tables

Volume III: Annexes

TABLE OF CONTENTS	
	Page
Volume I: Objectives, Methodology, and Highlights	1
Foreword by the Government of Iraq	2
by Ali Ghalib Baban, Minister of Planning and Development Cooperation	
IHSES Core Team	
Poverty Reduction Strategy High Committee	
Foreword by the World Bank	4
by Ritva Reinkka, Director, Middle East and North Africa Social and Economic Development,	
The World Bank	
Acknowledgements	6
by Dr. Mehdi Muhsin Al-Alak, Head of PRS High Committee, and IHSES Director; and	
by Dr. Jamal Rasul Mohammed Ameen, Head of KRSO, and IHSES Technical Advisor	
The IHSES Family	7
Objectives, Methodology, and Highlights	
1. Background	13
2. Objectives	13
3. Questionnaire	13
A. Preparation	
B. Pre-Test	
C. Pilot Survey	
D. Questionnaire Parts	
4. Sample	15
A. Design	
B. Sample Frame	
C. Primary Sampling Units and the Listing and Mapping Exercise	
D. Sampling Stages	
E. Sample Points, Trios, and Survey Waves	
F. Exceptional Measures	
G. Selection Probability and Sampling Weights	
H. Time-Use Sample	
I. Response Rates	
5. Survey Team	20
6. Fieldwork	22
A. Field Visit Schedule	
B. Wave Timetable	
C. Training	
D. Decentralized Data Entry, Field Follow-Up, and Supervision Forms	
7. Data Editing and Processing	25
A. Software Packages	
B. Stages of Data Processing	
8. Organization and Use of Tabulation Report	26
A. Organization of the Report	
B. A Cautionary Note on Price-Based Data and Use of This Report	
9. Tabulation Highlights	27

Volume II: Data Tables..... 31**1. Demographic characteristics**..... 33

Table 1-00.	Demographic indicators, overall summary of data from section 1 and the cover sheet, IHSES questionnaire
Table 1-1.	Number of households sampled by governorate and geographical division, IHSES (2007) and Multiple Indicators Cluster Survey 3 (2006)
Table 1-2.	Distribution of households <i>within</i> and <i>among</i> governorates and geographical divisions
Table 1-3.	Distribution of number of persons <i>within</i> and <i>among</i> governorates and geographical divisions
Table 1-4.	Distribution of persons by demographic and educational characteristics
Table 1-5.	Distributions of urban and rural households and by size and number of children
Table 1-6.	Average household size (no. persons) and percentage of adults, by governorate and geographical division
Table 1-7.	Distribution of persons by number of months absent from their household during previous year
Table 1-8.	Average number of days absent from the household during the previous year, by urban/rural and sex
Table 1-9.	Reasons for absence from the household for one or more months during previous year

2. Housing..... 51

Table 2-00.	Housing indicators, overall summary of data based on sections 3 and 16 of questionnaire
Table 2-1.	Persons by number of households in the housing unit (%)
Table 2-2.	Distribution of persons by number of years in the present housing unit
Table 2-3.	Distribution of persons by type of housing unit
Table 2-4.	Distribution principal material used for the walls
Table 2-5.	Distribution of persons by principal material used for ceiling
Table 2-6.	Distribution of persons by principal material used for flooring
Table 2-7.	Distribution of persons by principal material used for windows
Table 2-8.	Distribution of persons by the total built area (in square meters) of the housing unit
Table 2-9.	Distribution of persons by share of total built area (in square meters) of housing unit
Table 2-10.	Distribution of persons by total land area (in square meters) of the housing unit
Table 2-11.	Number of rooms in the housing unit per 100 persons
Table 2-12.	Distribution by number of rooms per 100 persons in the housing unit
Table 2-13.	The number of housing amenities per person in the housing unit
Table 2-14.	Distribution by person of kinds of deficiencies in the housing unit
Table 2-15.	Distribution by persons of number of deficiencies in the housing unit
Table 2-16.	Method of garbage disposal
Table 2-17.	Distribution of persons by types of sanitation
Table 2-18.	Distribution of persons by main water source
Table 2-19.	Distribution of persons by availability of water from the public network
Table 2-20.	Methods of dealing with water shortages from the public network
Table 2-21.	How drinking water is treated
Table 2-22.	How water for cooking is treated
Table 2-23.	How water used for washing is treated
Table 2-24.	Treatment of water used for other purposes
Table 2-25.	Water closet in the housing unit
Table 2-26.	Main method of cooling in the housing unit
Table 2-27.	Central cooling in the housing unit
Table 2-28.	Distribution of persons by primary and secondary sources of electricity
Table 2-29.	Distribution of persons by number of sources of electricity
Table 2-30.	Number of days and duration of electricity during the past week
Table 2-31.	Fuels used for cooking
Table 2-32.	Fuels used for household lighting

Table 2-33.	Fuels used for heating
Table 2-34.	Fuel used for heating water
Table 2-35.	Ownership of the housing unit
Table 2-36.	Types of occupancy tenancy
Table 2-37.	Distribution of persons by estimated rent categories
Table 2-38.	Distribution of persons by paid rent categories
Table 2-39.	Distribution of persons by the age of their housing unit
Table 2-40.	Adverse housing conditions
Table 2-41.	Transportation problems
Table 2-42.	Roads and sidewalk access to the housing unit
Table 2- 43.	Distance from housing unit to nearest primary school (meters)
Table 2- 44.	Distance from housing unit to nearest intermediate or secondary school (meters)
Table 2-45.	Distance from housing unit to nearest public hospital (meters)
Table 2-46.	Distance from housing unit to nearest private hospital (meters)
Table 2-47.	Distance from housing unit to nearest health center or physician (meters)
Table 2-48.	Distance from housing unit to nearest pharmacy (meters)
Table 2-49.	Distance from housing unit to nearest police station (meters)
Table 2-50.	Distance from housing unit-nearest post office
Table 2-51.	Distance to household's place of worship
Table 2-52.	Distance from housing unit to nearest youth center
Table 2-53.	Distance from housing unit to nearest bank (meters)
Table 2-54.	Distance from housing unit to nearest fire station
Table 2-55.	Distance from housing unit to municipality council
Table 2-56.	Distance from housing unit to a bus or car (meters)
Table 2-57.	Distance from housing unit to a market (meters)
Table 2-58.	Number of communications devices per household
Table 2-59.	Possession of durable goods (% persons whose households' possess)

3. Education and culture..... 197

Table 3-00.	Education and culture indicators, overall summary of data from section 4 and section 6, IHSES questionnaire
Table 3-1.	Proficiency of persons in first language
Table 3-2.	Proficiency of persons in second language
Table 3-3.	Proficiency of persons in third language
Table 3-4.	Distribution by educational level, persons 6–50 years
Table 3-5.	Net primary enrollment of children 6–11 years
Table 3-6.	Net intermediate enrollment of children 12–14 years
Table 3-7.	Net secondary enrollment of adolescents 15–17 years
Table 3-8.	Reasons for never having attended school, persons 6–50 years
Table 3-9.	Enrollment in literacy classes, persons 10+ years
Table 3-10.	Level of education, persons 10 years+
Table 3-11.	Average number years of school, by location and sex
Table 3-12.	Average number of repeated school years, by location and sex
Table 3-13.	Reasons for leaving or not being currently enrolled in school, persons 6–50 years
Table 3-14.	Type of school or university attended currently or during past year, persons 6–50 years
Table 3-15.	Distance, time, and main means of transportation to school, persons 6–50 years
Table 3-16.	Average school expenditure of persons (6-50 years) attending school during the past year (ID 000)
Table 3-17.	Average hours of reading each week by persons ten years and older
Table 3-18.	Political and social activity by persons 10 years and older
Table 3-19.	Sports and artistic activity by persons 10 years and older
Table 3-20.	Use and distribution of location among Internet users
Table 3-21.	Use and distribution of location between categories of Internet users
Table 3-22.	Distribution by kind and purpose of Internet use, persons 10+ years

4. Health	253
Table 4-00. Health indicators, overall summary of data from section 5, IHSES questionnaire	
Table 4-1. Distribution by kinds of disabilities, years of disability, and percentage who are disabled	
Table 4-2. Causes of disabilities	
Table 4-3. Distribution of persons with chronic disease conditions	
Table 4-4. Types of medical assistance received	
Table 4-5. Persons reporting chronic illnesses during the past month	
Table 4-6. Distribution of persons by types of injuries received during past month	
Table 4-7. Distribution of persons by cause of injury received during the past month	
Table 4-8. Distribution of persons by type of medical assistance during the past month	
Table 4-9. Distribution of persons with and without illness or injury during the past 30 days, number of days of lost from normal activities, and where care was received	
Table 4-10. Distance, travel time, and means of transportation to reach health services location	
Table 4-11. Expenditure on health during past 30 days (ID 000 per person)	
Table 4-12. Reasons why sick or injured people did not seek medical care during last months	
Table 4-13. Distribution of married women, 12–49, by number of years since their last delivery	
Table 4-14. Distribution of married women, 12–49, by prenatal care, complications during their most recent delivery, and current pregnancy	
Table 4-15. Breastfeeding of children under 5	
Table 4-16. Immunization of children under 5	
Table 4-17. Polio vaccination, children under 5	
Table 4-18. DPT vaccination, children under 5	
5. Labor force	283
Table 5-00. Labor force indicators, overall summary by details of IHSES questionnaire, sections 7, 12, and 13	
Table 5-1. Distribution of households and persons, by employment characteristics heads of household	
Table 5-2. Average household size and percentage of adults per household, by employment characteristics of head	
Table 5-3. Economic activity rate and unemployment, by age and education	
Table 5-4. Economic activity rate and unemployment, by governorate, location, income level, and size of household	
Table 5-5. Employment among children 6–14 years	
Table 5-6. Average hours worked per week (no.), And the distribution by number of hours per week	
Table 5-7. Main reason to have not worked in the past week	
Table 5-8. Reasons for not wanting more work	
Table 5-9. When persons wanting more work last sought work	
Table 5-10. First action to find work among those who are looking	
Table 5-11. Second action to find work among those who are looking	
Table 5-12. Third action to find work among those who are looking	
Table 5-13. Distribution of workers by occupation	
Table 5-14. How many months since leaving last full-time job	
Table 5-15. Distribution of workers by all occupations reported for the previous year	
Table 5-16. Distribution of workers by number of different jobs held during the previous year	
Table 5-17. Distribution of workers (by wage and nonwage work) by economic activity / industry during the previous year	
Table 5-18. Individual months that workers worked, and the average number of months worked during the past year	
Table 5-19. Average number of hours and days worked per week	
Table 5-20. Distribution of workers by economic activity/industry during the previous year	
Table 5-21. Distribution of wage work by sector	
Table 5-22. Percentage of workers covered by pension and social security, and distribution by size of establishment, location, and income level	
Table 5-23. Percentage of adult workers covered by pension and social security and distribution by size of establishment, by age, education, economic sector, and occupation	
Table 5-24. Distribution of workers by presence of airconditioning and heating in the workplace	

Table 5-25. Adverse environmental conditions in the workplace, by percentage of workers affected and average number of adverse conditions per worker	
Table 5-26. Distribution of workers by self-reported workplace hazards and length of the work day	
Table 5-27. Distribution of workers by permanence and seasonality of their jobs	
Table 5-28. Distribution of workers by main means of commuting (%), and average distance from residence to the job site (km)	
Table 5-29. Time indicators related to employment during the previous year	
Table 5-30. How workers found their jobs	
Table 5-31. How workers are paid and benefits received	
6. Household time use	349
Table 6-1. Daily activities (in minutes per day) for the 7-day week, by locality and sex	
Table 6-2. Daily activities (in minutes per day) for the 5-day work week, by locality and sex	
Table 6-3. Overall average time (in minutes per day) disaggregated by age, sex, education, governorate, geographic location, size of household, and income, averaged for the 7-day week	
Table 6-4. Actual average time (in minutes per day) disaggregated by age, sex, education, governorate, geographic location, size of household, and income, averaged for the 7-day week)	
Table 6-5. Overall average time (in minutes per day) disaggregated by age, sex, education, governorate, geographic location, size of household, and income, averaged for the 5-day week	
Table 6-6. Activity time (actual average, in minutes per 24-hour day) disaggregated by age, sex, education, governorate, geographic location, size of household, and income, averaged for the 5-day week	
Table 6-7. Activity time (actual average in minutes per 24-hour day) for the 7-day week, by season and governorate	
Table 6-8. Activity time (actual average, in minutes per 24-hour day) for the 5-day week, by season and governorate	
7. Food rations	383
Table 7-00. Food rations, overall summary of data from section 2, IHSES questionnaire	
Table 7-1. Number of ration cards per household (%), and number of registered persons by number of persons per card	
Table 7-2. Percentage of households and persons receiving food rations, by governorate, geographic division, per capita expenditure, and size of household	
Table 7-3. Households and persons receiving food rations by characteristics of head of household	
Table 7-4. Persons receiving food rations by age, education, economic activity, and occupation	
Table 7-5. Average cost of rations by levels of disaggregation (ID 000 per person)	
Table 7-6. Distribution of households by period in which food rations were last received, by locality	
Table 7-7. Food rations received, given away, and bartered	
Table 7-8. To whom rations were given, sold, or bartered, and reasons for doing so	
Table 7-9. Source and quantity of rations consumed in the past month	
Table 7-10. Reason for purchasing ration items from market, quantity purchased, value per person, and price	
Table 7-11. Average value paid for last ration, its market value, average value of sold or bartered rations, average value of purchased rations, and number of persons	
8. Household expenditure	423
Table 8-00. Household expenditure indicators, overall summary of data from sections 2 and sections 8-11, IHSES questionnaire (ID / month)	
Table 8-1. Average per capita nominal expenditure at market prices by governorate	
Table 8-2. Average households expenditure at market prices by governorate	
Table 8-3. Distribution of expenditures for main groups at prices by governorate	
Table 8-4. Average per capita nominal expenditure for main groups at prices paid by governorate	
Table 8-5. Average per household expenditure at price paid by governorate	
Table 8-6. Distribution expenditure for main groups at paid prices by governorate	
Table 8-7. Average per capita nominal expenditure by expenditure type	
Table 8-8. Average household expenditure by expenditure type	

Table 8-9.	Distribution of households and persons by expenditure groups
Table 8-10.	Average household size and percentage of adults aged 15+ by expenditure groups
Table 8-11.	Distribution of households by expenditure groups
Table 8-12.	Distribution of households by household expenditure groups
Table 8-13.	Distribution of households by per capita nominal expenditure groups
Table 8-14.	Distribution of households by per capita nominal expenditure group and head-of-household characteristics
Table 8-15.	Urban average per capita nominal expenditure by governorate
Table 8-16.	Rural average per capita nominal expenditure by governorate
Table 8-17.	Urban and rural average per capita nominal expenditure by governorate
Table 8-18.	Urban average household expenditure by governorate
Table 8-19.	Rural average household expenditure by governorate
Table 8-20.	Urban and rural average household expenditure by governorate
Table 8-21.	Urban distribution of expenditure by governorate
Table 8-22.	Rural distribution of expenditure by governorate
Table 8-23.	Urban and rural distribution of expenditure by governorate
Table 8-24.	Urban average per capita nominal expenditure by household expenditure group (ID 000/ mo.)
Table 8-25.	Rural average per capita nominal expenditure by household expenditure group (ID 000/ mo.)
Table 8-26.	Urban and rural average per capita nominal expenditure by household expenditure group
Table 8-27.	Urban average household expenditure by household expenditure group
Table 8-28.	Rural average household expenditure by household expenditure group
Table 8-29.	Urban distribution of expenditure by urban household expenditure group
Table 8-30.	Rural distribution of expenditure by household expenditure group
Table 8-31.	Urban and rural distribution of expenditure by household expenditure group
Table 8-32.	Urban average expenditure by per capita nominal expenditure group
Table 8-33.	Rural average per capita nominal expenditure by per capita nominal expenditure group
Table 8-34.	Urban and rural average per capita nominal expenditure by per capita nominal expenditure group
Table 8-35.	Urban average household expenditure by per capita nominal expenditure group (ID 000/ month)
Table 8-36.	Rural average household expenditure by per capita nominal expenditure group (ID 000/ month)
Table 8-37.	Urban and rural average household expenditure by per capita nominal expenditure group (ID 000/month)
Table 8-38.	Urban expenditure distribution by per capita nominal expenditure group
Table 8-39.	Rural distribution of expenditure by per capita nominal expenditure group
Table 8-40.	Urban and rural distribution of expenditure by per capita nominal expenditure group
Table 8-41.	Urban average per capita nominal expenditure by household size
Table 8-42.	Rural average per capita nominal expenditure by household size
Table 8-43.	Urban and rural average per capita nominal expenditure by household size
Table 8-44.	Urban average household expenditure by household size
Table 8-45.	Rural average household expenditure by household size
Table 8-46.	Urban and rural average household expenditure by household size
Table 8-47.	Urban distribution of expenditure by household size
Table 8-48.	Rural distribution of expenditure by household size
Table 8-49.	Urban and rural distribution of expenditure by household size

9. Income	631
Table 9-00.	Income indicators, overall summary of data from sections 13, 14, and 15 of IHSES questionnaire
Table 9-1.	Per capita nominal income by income source
Table 9-2.	Per household income by income source
Table 9-3.	Distribution of income by income source
Table 9-4.	Households and persons by income groups and income source
Table 9-5.	Income by percentage of adult household members and average household size
Table 9-6.	Distribution of households by household income group
Table 9-7.	Distribution of households by household income group and by head of household characteristics
Table 9-8.	Distribution of households by per capita nominal income group and level of disaggregation
Table 9-9.	Distribution of households by per capita nominal income group and head-of-household characteristics
Table 9-10.	Distribution of wage earners (15+ years) and average wages by governorate, geographic division, and locality
Table 9-11.	Distribution of wage earners (15+ years) and their average wages during past year, by age, sex, education, and economic activity
Table 9-12.	Percentage of households receiving assistance by source of assistance
Table 9-13.	Average assistance received during the past 12 months (ID 000/hh)
Table 9-14.	Distribution of households by per capita nominal income and per capita nominal expenditure decile group (% of HHs within expenditure group)
Table 9-15.	Distribution of households by household income group and household expenditure group (% of households within expenditure group)
Table 9-16.	Distribution of households by household income group, and household expenditure group (% of HHs within income group)
Table 9-17.	Distribution of households by per capita nominal income group and per capita nominal expenditure group (% of HHs within expenditure group)
Table 9-18.	Distribution of households by per capita nominal income group, and per capita nominal expenditure group (% of HHs within income group)
Table 9-19.	Urban per capita nominal income by governorate
Table 9-20.	Rural per capita nominal income by governorate
Table 9-21.	Urban and rural per capita nominal income by governorate
Table 9-22.	Urban household income by governorate
Table 9-23.	Rural household income by governorate
Table 9-24.	Urban and rural household income by governorate
Table 9-25.	Distribution of urban income by governorate
Table 9-26.	Distribution of rural income by governorate
Table 9-27.	Distribution of urban and rural income by governorate
Table 9-28.	Urban average per capita nominal income by household income group
Table 9-29.	Rural average per capita nominal income by household income group
Table 9-30.	Urban and rural average per capita nominal income by household income group
Table 9-31.	Urban and rural average per capita nominal income by household income group
Table 9-32.	Rural household income by household income group
Table 9-33.	Urban and rural household income by household income group
Table 9-34.	Distribution of urban income by household income group
Table 9-35.	Distribution of rural income by household income group

	<i>Page</i>
Table 9-36. Distribution of urban and rural income by household income group	
Table 9-37. Urban average per capita nominal income, by per capita nominal income group	
Table 9-38. Rural average per capita nominal income by per capita nominal income group	
Table 9-39. Urban and rural average per capita nominal income, by per capita nominal income group	
Table 9-40. Urban household income by per capita nominal income group	
Table 9-41. Rural household income by per capita nominal income group	
Table 9-42. Urban and rural household income, by per capita nominal income group	
Table 9-43. Distribution of urban income, by per capita nominal income group	
Table 9-44. Distribution of rural income by per capita nominal income group	
Table 9-45. Distribution of urban and rural income by per capita nominal income groups	
Table 9-46. Urban average per capita nominal income by household size	
Table 9-47. Rural average per capita nominal income by household size	
Table 9-48. Urban and rural average per capita nominal income by household size	
Table 9-49. Urban per household income by household size	
Table 9-50. Rural per household income, by household size	
Table 9-51. Urban and rural per household income, by household size	
Table 9-52. Urban income distribution by household size	
Table 9-53. Rural income distribution by household size	
Table 9-54. Urban and rural income distribution by household size	
Table 9-55. Per capita urban income by geographical division	
Table 9-56. Per capita rural income by geographical division	
Table 9-57. Per capita urban and rural income by geographical division	
Table 9-58. Per household urban income by geographical division	
Table 9-59. Per household rural income by geographical division	
Table 9-60. Per household urban and rural income by geographical division	
Table 9-61. Distribution of urban income by geographical division	
Table 9-62. Distribution of rural income by geographical division	
Table 9-63. Distribution of urban and rural income by geographical division	
10. Loans, assistance, and risk	749
Table 10-00. Loan, assistance, and risk indicators, overall summary of data based on Sections 17 and 18 of IHSES questionnaire (households 000)	
Table 10-1. Households with outstanding loans, debts, or advances to be paid	
Table 10-2. Households with outstanding loans or credit during the past 12 months, by main source	
Table 10-3. Reasons for borrowing during the past 12 month	
Table 10-4. Proportion of loans for which interest was charged	
Table 10-5. Distribution of households by the source of most important assistance received during the past 12 months	
Table 10-6. Number of adverse events affecting the household past year	
Table 10-7. Kinds of adverse events affecting households during the past year (no.)	
Table 10-8. Actions to avoid decline or loss of income during the past year	
Table 10-9. The number of measures taken in the past year to avoid loss of income during the past 12 months	
Table 10-10. Households with outstanding loans, debts, or advances	

TABLE OF CONTENTS	
	<i>Page</i>
Volume III: ANNEXES	777
Annex 1. Standard Error	779
Annex 2. Statistical Classifications for Questionnaire Coding	797
Annex 3. The Questionnaire	799
Part 1. Socio-Economic Data	800
Section 1: Household Roster	
Section 2: Rations Received and Consumption of Provisions	
Section 3: Housing	
Section 4: Education	
Section 5: Health	
Section 6: Activities, Entertainment, and Hobbies	
Section 7: Job Search and Past Employment	
Part 2. Monthly, Quarterly, and Annual Expenditures	829
Section 8: Expenditures on Nonfood Services and Commodities (past 30 days)	
Section 9: Expenditures on Nonfood Services and Commodities (past 90 days)	
Section 10: Expenditures on Nonfood Services and Commodities (past 12 months)	
Part 3. Daily Expenditures, Income, and Other	863
Section 11: Daily Expenditure on Repetitive Food and Nonfood Commodities	
Section 12: Jobs during the Previous 12 Months	
Section 13: Wage Earnings	
Section 14: Nonwage Earning Activities	
Section 15: Income from Property and Transfers	
Section 16: Durable Goods	
Section 17: Loans, Credits, and Assistance	
Section 18: Risk	
Part 4. Diary of Daily Expenditure on Food Commodities	902
Part 5. Time-Use Sheet	910
Annex 4. Field Manual	931
Annex 5. Supervision Forms	977

**VOLUME I:
OBJECTIVES,
METHODOLOGY,
AND HIGHLIGHTS**



Foreword, by the Government of Iraq

The Ministry of Planning and Development Cooperation (MOPDC) of Iraq has undertaken the Household Survey and Policies for Poverty Reduction (HSPPR) project through a technical and organizational partnership with the World Bank. The goal of this project is to implement a Poverty Reduction Strategy. Achieving this goal depends to a great extent on the availability of integrated, objective, and comprehensive data, based on sound methodology and statistical principles. Therefore, the first phase of the HSPPR project was the accomplishment of the Iraq Household Social and Economic Survey (IHSES).

MOPDC has provided this enterprise with support and interest from the start. We have supported all phases of implementation, including participation by our senior staff in the PRS High Committee that guides this work and that is comprised of high-level representation from all relevant ministries.

The Central Organization for Statistics and Information Technology (COSIT), which is the principal technical body for statistical work in Iraq under the Statistics Law, has been the driving force behind this effort. COSIT has mobilized and built impressive institutional capacity in response to this daunting challenge. The dedication and talents of the COSIT staff have produced efficient preparation and implementation of the largest household social and economic survey ever conducted in Iraq.

IHSES has provided essential data for understanding the nature and causes of poverty among Iraqi households. We now have a solid foundation upon which to devise a national poverty reduction strategy. Another critical use of this data will be to construct a new consumer price index based on updated consumption patterns. The existing CPI, which was developed in 1993, no longer reflects Iraqi household expenditure patterns.

The present accomplishment represents a highly productive technical partnership between the Government of Iraq and the World Bank. This relationship, which includes both conceptual and applied effort, has unfolded over two years. Looking ahead, MOPDC looks forward to an analytical assessment of poverty building upon the solid statistical foundation provided by IHSES, as well as policy analysis to create an overarching national poverty reduction strategy.

We commend the efforts of the World Bank, especially the working group headed so effectively by Ms. Susan Razzaz, and the team of experts and consultants who worked with her. We are equally grateful for the distinguished efforts of COSIT, the Kurdistan Region Statistics Organization (KRSO), the IHSES Core Team, and the Poverty Reduction Strategy (PRS) High Committee. Together, they have produced a high-quality, up-to-date statistical foundation that will be crucial for Iraq's reconstruction and future development.

May God protect and enable Iraq to overcome its hardships for the sake of the welfare of the Iraqi people.



Ali Ghalib Baban
Minister of Planning and Development
Cooperation
December 2008

The Central Organisation for Statistics and Information Technology (COSIT)

Dr. Mehdi M. Ismail Al-Alak	IHSES Director
Louay Haqqi Rashid	Late Operation Room Manager
Najlaa Ali Murad	Fieldwork and Operation Room Manager
Iman Hassoon Hadi	Data Manager
Hana A. Saleh	Economic Expert

Kurdistan Region Statistics Organisation (KRSO)

Dr. Jamal Rasul Mohammed Ameen	Data Management Advisor
Mahmood Othman Maarooof	Fieldwork Advisor

World Bank

Susan Razzaz	Senior Economist, Task Team Leader
Dr. Mohammed Hussein Bakir	Expert
Dr. Basil Al-Hussaini	Expert
Juan Munoz	Expert
Beatriz Godoy	Expert
Victor Canales	Expert

Poverty Reduction Strategy (PRS) High Committee

Dr. Mehdi M. Ismail Al-Alak	Undersecretary, Head of COSIT
Dr. Amira Muhammed Hussain	Member of Parliament
Dr. Aabda Ahmed Khalil	Member of Parliament
Dr. Aala Al-Saadoon	Member of Parliament
Zaki Abdul Wahab Al-Jader	Director General, Human Development Office, MOPDC
Abdullah Mohammed Bandar	Advisor, Advisors Commission, Prime Minister's Office
Ali Al Zubidy	Director General of Educational Planning, MOE
Ihsan Jaafar Ahmed Al-Khayyat	Director General of Public Health and PHC, MOH
Riyadh Fakher Khalaf Al-Hashimi	Director General, Supplies and Planning, MOT
Layla Kadim Aziz Al-Azawe	Director General of Planning and Follow-up, MOLSA
Hussain Mansour Al-Safi	Legal Advisor, Ministry of State for Women's Affairs
Mahmood Othman Maarooof	Advisor, Ministry of Planning, KRGPRS
Nidhal Abdul Karim Jawad	Representative of Ministry of Finance
Najah Jalil Khalil	Assistant Director Gen., Social Development, MOLSA, KRG
Dr. Kareem Mohammed Hamzah	Specialized Academic, Baghdad University
Najlaa Ali Murad	Director, Department of Living Conditions, COSIT
Abdullah Hassan Mathi	Deputy Project Manager

Foreword by the World Bank

Twenty-five years ago, Iraq was widely regarded as the most developed country in the Middle East. People come to Iraq from across the region seeking the best in university education and health care. Iraq ranked toward the top on virtually every indicator of human well-being—infant mortality, school enrollment, family food consumption, wage levels, and rates of employment. The World Bank classified Iraq as an upper-middle-income country.

Since then, Iraq has been the *only* Middle Eastern country whose living standard has not improved. Years of political repression, wars, embargo, and instability have undermined social well-being and imposed tragic suffering across the entire social spectrum. Iraq’s human development indicators that once ranked at the top have now dropped toward the bottom. In areas such as secondary-school enrollment and child immunization, Iraq now ranks lower than some of the poorest countries in the world.

During 2003, the World Bank, the United Nations Development Programme, and the International Monetary Fund provided a first assessment of Iraq’s reconstruction and rehabilitation needs. It was assumed, perhaps too quickly, that poverty would diminish as the economy revived. Today, we are much clearer that economic recovery and financial resources are only one element in recovery. Institutional resources also have been lost through years of politicization and neglect in key ministries and in public sector agencies responsible for human welfare. Precious human resources have been depleted as tens of thousands of educated professionals have been killed or have fled. Knowledge resources also are missing, starting with the basic data needed to plan and weigh policy alternatives. The informational vacuum was compounded because official data had been widely misused and distorted. No national-level survey of the type needed to assess poverty has been carried out since 1988.

In 2005, the Ministry of Planning and Development Cooperation (MOPDC) requested World Bank technical and financial help to formulate a poverty reduction strategy. A collaborative agreement was signed in 2006 for the Household Survey and Policies for Poverty Reduction (HSPPR) project. This initiative brought together the Central Organization for Statistics and Information Technology and the Kurdistan Region Statistics Organization. Their objective was to collect socio-economic data for the nation as a whole, to analyze the extent and causes of poverty, and to support development of a practical poverty reduction strategy. The primary role of the World Bank has been technical assistance in support of the Iraq Household Socio-Economic Survey (IHSES).

The present IHSES Tabulation Report represents an important milestone. The report presents first results from the nationwide survey—a representative sample of approximately 18,000 households and more than 127,000 individuals. Volume I of this report describes the objectives and methodology of the survey. The final section of this first volume offers an interesting selection of data highlights, amply demonstrating the breadth and richness of new statistical information. Volume II lays out nearly 300 cross-tabulations. Readers can use these tables to pursue deeper investigations into the many diverse subthemes that the survey covered. Volume III provides a closer look at several critical tools that were used, including the complete five-part household questionnaire and the field manual used to train interviewers and guide their day-to-day work.

Despite its physical heft, the scope of the report is limited. Fundamental policy and research questions are neither raised nor answered here. For example, a reader will not discover the level, characteristics, or distribution of poverty in Iraq. Answers to questions such as these will require the calculation of a poverty line and the use of analytical techniques. Furthermore, all prices that are published here need to be adjusted for inflation and regional variation before they are usable for comparative analysis. Nevertheless, the probing of deeper questions begins with this basic listing of data; and the World Bank is proud of the role it has played in assisting its Iraqi partners to achieve this impressive milestone.

While any national-level study is daunting, words such as “complex” and “challenging” hardly do justice to what IHSES has accomplished here. Words cannot convey the determination and personal courage that was required to produce these pages of numbers. Visiting a random selection of households across Iraq was not only logistically difficult, it was often gravely dangerous. The more than 300 fieldworkers who carried out this study (including the regional and local supervisors who accompanied them to the field) worked in every region of the country, including high-conflict zones such as DIALA, AL-ANBAR, NINEVAH, SALAHUDDIN, and BAGHDAD. They routinely overcame not only mundane obstacles (such as delays in getting paid and collecting travel reimbursements), but constant fear, suspicion, and threats against them. With frequent help from local counterparts and village leaders, they persevered amidst stress, uncertainty, and ongoing violence. Remarkably, they were able to reach and interview more than 98 percent of the selected households. Virtually every family that they contacted freely consented to the hours of interviewing that each questionnaire represents—simply on faith that this information will help to build a more prosperous and stable future for their children and their country.

The cost of this work was tragically high for the inter-institutional team that came to be known as “the IHSES family.” In the early hours of August 2, 2007, Louay Haqqi, the Director of Operations of the IHSES, was brutally assassinated on his way to work. Literally, he gave his life for this survey. Yet there can be no greater testimonial to his sacrifice than the determination with which his team recovered from their shock, fear, and grief—and then went on to complete this extraordinary undertaking in his honor.



Ritva Reinikka
Director
Middle East and North Africa Social and Economic
Development
The World Bank

Acknowledgements

It is impossible to acknowledge the countless individuals who contributed to this undertaking in so many ways large and small. This study represents not just their sweat, but their blood shed upon the soil of our beloved country. To the entire IHSES team, we offer inexpressible thanks for their personal and professional commitment and their unstinting self-sacrifice.

We offer deep gratitude to the leadership of his Excellency, the Minister of the Ministry of Planning and Development Cooperation (MOPDC), Mr. Ali Ghalib Baban, as well as to the great efforts by his Excellency the Minister of Planning in Kurdistan Region, Mr. Othman Shwani.

We thank Ms. Susan Razzaz, World Bank Senior Economist and Task Team Leader for this project, for her unwavering support. She was ably assisted by distinguished experts—Dr. Mohammed Hussein Bakir and Dr. Basil Al-Hussaini; as well as a team of international consultants including Ms. Beatriz Godoy, Juan Munoz, and Victor Canales.

We thank all members of the Poverty Reduction Strategy (PRS) High Committee; the project manager, Mr. Zaki Abdul Wahab Al-Jader; and the IHSES administrative and project accounting teams.

We are deeply grateful to Ms. Najlaa Ali Murad, IHSES Fieldwork Manager and Operations Room Director, for her leadership and contributions through every phase of this survey, as well as to all the teams that coordinated and supervised the fieldwork. We particularly thank our fieldwork advisor, Mr. Mahmood Othman Maarooof, Director of Sulaimaniya Statistics Office, for his admirable performance throughout the survey; and our data manager, Ms. Iman Hassoon Hadi, for her ability in overcoming challenges, as well as to all office and data processing staff; the IHSES economic expert, Ms. Hana Abdul Jabbar Saleh; the head of the Data Analysis Unit, Mr. Ayad Jawad, and all unit staff, including those in Kurdistan Region.

To those other dedicated individuals whose names adorn the following pages—members of the IHSES Operations Room, the Project Accounts Team, the Regional Coordinators, the Data Management Team, the National Analysis Team—we offer our sincerest thanks for a job well done. And to all the Governorate Teams—including local supervisors, interviewers, data entry operators, listers and mappers, and governorate secretaries—we recognize that you were the backbone and true heroes of this work. We know, too, that there are many other unsung soldiers—within COSIT, KRISO, the World Bank, and other institutions—who quietly backstopped this effort and helped to make it possible.

Not least, we thank the people of our dear country, especially the 18,144 households who welcomed us into their homes as guests and gave so generously of their time. We will honor you with renewed commitment to maintain this project at the high standards that you deserve, and we pledge continued struggle toward a better future for all Iraqis.

Dr. Jamal Rasul Mohammed Ameen
Head, KRISO
IHSES Technical Supervisor

Dr. Mehdi Muhsin Al-Alak
Head of PRS High Committee
IHSES Director

IHSES Family

Project Management Team

Zaki Abdul Wahab Al-Jader	Project Manager
Abdullah Hasan Mathi	Deputy Project Manager
Qassim E. Frez	Financial Officer
Ahmed M. Saleh	Procurement Officer
Ghassan Adnan Mahmoud	Follow-Up Officer
Lamyaa A. Razak	Project Accountant

National Analysis and Report Preparation Team

Dr. Mehdi M. Ismail Al-Alak	Deputy Minister, COSIT Director
Najlaa Ali Murad	Director, Living Conditions Department
Hana A. Saleh	IHSES Economic Expert
Iman Hassoon Hadi	Data Manager
Ayad Jawad Hasan	Manager of Statistical Analysis Unit
Fadhil Nawgh Khaizaran	Expenditure Indicators
Basma Abdul Wahab Qadoori	Education and Demographic Indicators
Dalia Abdul Latif Abdul Qader	Income Indicators
Nada Ahmed Amin	Housing Indicators
Sundus Jawad Hussein	Workforce and Ration Card Indicators
Bushra Nsaif Jasim	Health and Loan Indicators
Feryal Mahmoud Kadhim	Time Use Indicators
Mudhafer T. Pirdawood	Demographic Indicators, Erbil
Omed Baker Ahmed	Income Indicators, Sulaimaniya

Operations Room

Martyr Louay Haqqi Rashid	Late Operation Room Manager
Najlaa Ali Murad	Operation Room and Fieldwork Manager
Adel Rashid M. Al-Shemeri	Logistics Officer
Hana A. Saleh	Economic Expert
Merwan Khalid Ali	Operation Room Coordinator
Rula Sharaf Kamil	Operation Room Secretary

Accounting Team

Bassim Abdul Khalik Al-Saffar	Project Accounting Manager
Iman Abdul Rida Sharif	Project Auditor
Lamyaa A. Razak	Project Accountant
Ahmed Thamer Younis	Accounting Clerk
Abdullah Younis Faris	Assistant Accountant
Hersh Majeed Hassan	Accountant, Sulaimaniya
Layla S. Jabbar	Accountant, Erbil and Duhouk

Regional Coordinators

Ilham Jamil Matloub	Ninevah, Kirkuk, Salahuddin
Qusay Abdulfattah Raouf	Al-Muthanna, Al-Qadisiya, Wasit
Raad Abdulrazzaq Ali	Babil, Kerbela, Al-Najaf
Abbas A. Ali	Thi Qar, Basrah, Missan
Sousan A. Ibraheim	Baghdad
Nidal Mahmoud Hasan	Baghdad
Alaa ul Deen M. Khairallah	Al-Anbar, Hadithah
Abdullah Ahmed Nsaif Al-Shjlawe	Al-Anbar, Al-Falloujeh
Ali Fakir Abudl Malik	Al-Anbar, Al-Ramadi
Zaid Khalaf Mahmoud	Diala
Sabir Yaseen Salih	Duhouk
Saman Abdul Razak	Erbil
Mohamed Hasan Mahmood	Sulaimaniya
Sirwan H. Fattah	Sulaimaniya

Governorate Coordinators

Hassan Sha’aban Abdullah	Duhouk
Subhi Y. Hussein	Ninevah
Mahmood Othman Maarooof	Sulaimaniya
Adnan R. Baba Adel	Kirkuk
Mohamad Sabir Majeed	Erbil
Abdul Majeed Abdul Ridha	Diala
Ala ul Deen M.Khair Allah	Al-Anbar
Abdul Karim Jasim	Baghdad
Mohammed Al-Jorani	Baghdad
Yousif Kadhim Abid Aun	Babil
Adeeb M. Ali Majad	Kerbela
Mohammed A. Olewi	Wasit
Abdel Mertah K. Ibraheem	Salahuddin
Faik A. Majeed Moalla	Al-Najaf
Fadhel A. Abid	Al-Qadisiya
Mania B. Atia	Al-Muthanna
Abbas Dawod Shatteay	Thi Qar
Khalef A. Banea Almnshdoi	Missan
Chaseb H. Mhuder Fares	Basrah

Governorate Field Teams

Duhouk

Muhsen H. Muhamed	Local Supervisor
Shavan E. Musa	Local Supervisor
Shavan D. Numan	Local Supervisor
Amer H. Husain	Interviewer
Baiman R. Abdulla	Interviewer
Faris J. Khalid	Interviewer
Sabah M. Fadel	Interviewer
Ashwaq E. Shamun	Interviewer
Ayad H. Saidalla	Interviewer
Hawazen A. Musa	Interviewer
Fahen U. Salim	Interviewer
Serwan M. Rasheh	Interviewer
Hktar T. Muhamed	Data Entry Operator
Ali T. Muhamed	Data Entry Operator
Nazar R. Musa	Data Entry Operator
Srhang F. Taher	Lister
Selaaf S. Ahmed	Governorate Secretary

Ninevah

Mohamad Mahfot Qasm	Local Supervisor
Aesar Sabah Hana	Local Supervisor
Adnan Mahmad Saadk	Local Supervisor
Ekhlas Abbas Ali	Interviewer
Fadia Falh Hasan	Interviewer
Hathema Abd Aload Sultan	Interviewer
Fadia Hanie Shaker	Interviewer
Mayada Salh Yakob	Interviewer
Najla Fuad Salah	Interviewer
Balkges Ahmed Mosa	Interviewer
Nada Mohmmod Ramadan	Interviewer
Qosay Ahmad Taha	Interviewer
Baraa Ebraheem Ahmed	Data Entry Operator
Noura Sbhee Yousif	Data Entry Operator
Yasser M. Mostafa	Data Entry Operator
Radwan Rjab Fandee	Lister
Kevadan abba sltan	Governorate Secretary

Sulaimaniya

Soran Ghafour Rahim	Local Supervisor
Narass J. M. Hasan	Local Supervisor
Mariwan H. Saied Hemeh	Local Supervisor
Shiya Ali Ahmed	Interviewer
Bnar Ma’soum Abdul Karim	Interviewer
Ahmed Mohammed Sadiq	Interviewer
Chiman Mahmoud Ali	Interviewer
Shoukhan Salar Ahmed	Interviewer
Bikhtiar Omar Ali	Interviewer
Banaz Jamal Rahman	Interviewer
Sattar Moh’d Aloqader	Interviewer
Hardi Fariq Mohammed	Interviewer
Shahla Jabbar Fattah	Data Entry Operator
Sawek L. H. G. Karim	Data Entry Operator
Chinor H. Gharib Karim	Data Entry Operator
Farouk Ahmed Mahmoud	Lister
Souz M. A. Najim Eddin	Governorate Secretary

Kirkuk

Yasher K. Murad	Local Supervisor
Muhanad Y. Khdeer	Local Supervisor
Gazee A. Azez	Local Supervisor
Luay M. Abedal-Rahman	Interviewer
Shadawa U. Ramadan	Interviewer
Shaker R. Mohamed	Interviewer
Nazik M. Jumaa	Interviewer
Shahab A. Aziz	Interviewer
Fadel A. Ithaja	Interviewer
Saad S. Jumaa	Interviewer
Belal S. Taha	Interviewer
Hasan A. Abdal-Khalik	Interviewer
Haythem E. Jaber	Data Entry Operator
Nadia J. Mohamed	Data Entry Operator
Salma N. Esmael	Data Entry Operator
Fuad E. Ghareeb	Lister
Sama S. Hana	Governorate Secretary

Erbil

Shelan Q. Taha	Local Supervisor
Tara A. Khliil	Local Supervisor
Shojan U. Mohammed	Local Supervisor
Aza M. Husain	Interviewer
Samer M. Saidi	Interviewer
Mohammed H. Rasul	Interviewer
Mohammed T. Rasul	Interviewer
Sami A. Naqeb	Interviewer
Haimen A. Azez	Interviewer
Bashedar A. Khder	Interviewer
Banar A. Mustafa	Interviewer
Gzngk B. Jalal	Interviewer
Bashedar A. kreem	Data Entry Operator
Madoo U. Khdr	Data Entry Operator
Helt N. Najeem	Data Entry Operator
Helgord T. Hamd	Lister
Vian A. Mohammed	Governorate Secretary

Diala

Bassam Sabar Abdal-Kareen	Local Supervisor
Rafed Mahmod Abdulaah	Local Supervisor
Shaimaa Abass Aziz	Local Supervisor
Gassan Adil Noorey	Interviewer
Mohammed Kairey Fadel	Interviewer
Rasha Rashid Hasan	Interviewer
Hend Shaker Sarhan	Interviewer
Asmaa Abas Aziz	Interviewer
Entesar Abas Aziz	Interviewer
Wafa Whaieb Abd-Allah	Interviewer
Najaw Yahia Breesam	Interviewer
Shaimaa Abdal-Razak Ahmed	Interviewer
Omar Jihad Murad	Data Entry Operator
Wisam Latif Jaber	Data Entry Operator
Nofal Farook Abbas	Data Entry Operator
Rafa Fleih Hasan	Lister
Suaad Tawfeq Saleh	Governorate Secretary

Al-Anbar	
Ahmed Asmael Ali	Local Supervisor
Hashim Nemer Khalaf	Local Supervisor
Mostafa Nazar Ali	Local Supervisor
Anmar Aaid Abd Mohammed	Interviewer
Moshtak Taleb Mohammad	Interviewer
Mahmod Bisam Sieed	Interviewer
Belil Kazm Abdal Kareem	Interviewer
Mohammad Khaleel	Interviewer
Saror Jasim Mohammad	Interviewer
Maher Jasim Firhin	Interviewer
Abd Alwahb Mahdy Mohammd	Interviewer
Withk Awbid Kirhot	Interviewer
Omar Abed Alfatha	Data Entry Operator
Abis Khalaf Solamin	Data Entry Operator
Asaid H. Abdaljaleel	Data Entry Operator
Oday Mohammad Abas	Lister
Mohammad Jisem Mohammed	Governorate Secretary

Baghdad	
Ammar Khudayer Hadi	Local Supervisor
Shwan Khalid Ali	Local Supervisor
Aaziz Atwan Htaimi	Local Supervisor
Abdul A. Hamid Al-Jafaje	Local Supervisor
Muafaq Jassim Hasan	Local Supervisor
Basher Ibrahim Abdulalee	Interviewer
Ammar Ali Frhan	Interviewer
Mohamed Ibrahim Mahmoud	Interviewer
Abdul Al-Nasir Yusuf Mjuel	Interviewer
Abdul Al-Nasir Ghazi Jabar	Interviewer
Abdul Razzak J. Mohammed	Interviewer
Sahib Ahmed Khalaf	Interviewer
Sufyan Mohammed Fayad	Interviewer
Ahmed Ali Salih	Interviewer
Mohamed Hashim Nima	Interviewer
Nida Ismael Abd	Interviewer
Firas Muhanad Abdulrazzak	Interviewer
Basim Nima Jassim	Interviewer
Nahla Mohammed Rasheed	Interviewer
Ammar Ahmed Ali	Interviewer
Gussoun Harbi Abbas	Data Entry Operator
Hadeel A. J. Majeed	Data Entry Operator
Ali Gafouri Hussain	Data Entry Operator
Qusai Jaffar Al Tayar	Data Entry Operator
Isra Salah Aldin Yahia	Data Entry Operator
Fadila Kadum A.	Lister
Faiseel Rifat A.	Lister
Isra Kadure Hamdan	Governorate Secretary
Hardi Fariq Mohammed	Interviewer
Shahla Jabbar Fattah	Data Entry Operator
Sawek L. H. G. Karim	Data Entry Operator
Chinor H. Gharib Karim	Data Entry Operator
Farouk Ahmed Mahmoud	Lister
Souz M. A. Najim Eddin	Governorate Secretary

Babil	
Jabar Medhoss Selman	Local Supervisor
Alaa M. Jafar	Local Supervisor
Ali Hassan Mohamed	Local Supervisor
Razoky Naji Abd Al Razak	Interviewer
Ali Jassim Hassan	Interviewer
Hassaneen Abd Al Jabar Hashim	Interviewer
Saher Hadi Kareem	Interviewer
Deiar Mohamed Ubaiss	Interviewer
Hassan Mezher Ubaid	Interviewer
Maha Mohamed Hamza	Interviewer
Etheer Abass Dhaheer	Interviewer
Iman Abed Ali Abed Al Razak	Interviewer
Asmaa Jesom Aukla	Data Entry Operator
Rana Ali Zeki	Data Entry Operator
Maha Saheb Mohamed	Data Entry Operator
Ahmed Mounser Abbas	Lister
Hala Ayad Ahmed	Governorate Secretary

Kerbela	
Ahmed J. Hashim	Local Supervisor
Yass Khudair Meery	Local Supervisor
Jawad Kadum Nassir	Local Supervisor
Shobbar Sahib Jawad	Interviewer
Ali Kadum Hussain	Interviewer
Abbas Ali Abd Auon	Interviewer
Bassim Ali Mohammad	Interviewer
Baidaa Hamed Mezhir	Interviewer
Jassim Mohammed Hadwy	Interviewer
Reyaad Kamel Auda	Interviewer
Jawad Kadum Mohammed	Interviewer
Yaqub Hady Sachet	Interviewer
Duraïd Saeed Mahmood	Data Entry Operator
Abdul M. H. Sached	Data Entry Operator
Majed Dekheel Auda	Data Entry Operator
Hassan Nasir Hussain	Lister
Mohammad A. Ameer	Governorate Secretary

Wasit	
Khalid U. Salman	Local Supervisor
Gader N. Abdulah	Local Supervisor
Husain S. Ali	Local Supervisor
Feras A. Husain	Interviewer
Mnahi F. Jasim	Interviewer
Shamji G. Abed	Interviewer
Amar A. Kadim	Interviewer
Riyad N. Anter	Interviewer
Raid S. Ali	Interviewer
Maitham T. Mutlak	Interviewer
Muhamed A. Husian	Interviewer
Wafaa A. Abedal Reda	Interviewer
Jabber R. Fandi	Data Entry Operator
Zahraa A. Mohamad	Data Entry Operator
Nawras J. Yusef	Data Entry Operator
Wisam M. Hadi	Lister
Saif A. Alhusain	Governorate Secretary

Salahuddin	
Uruba T. Ali	Local Supervisor
Ammar H. Ali	Local Supervisor
Muhamed A. Kheralah	Local Supervisor
Adnan Mamduh Abd Al Latif	Interviewer
Rahghad S. Labebe	Interviewer
Enas Kh. Salem	Interviewer
Husain A. Abass	Interviewer
Qusay D. Rudan	Interviewer
Zahra M. Jumaa	Interviewer
Hameed H. Khalaf	Interviewer
Zainab N. Hamza	Interviewer
Nabeel B. Abass	Interviewer
Muhamed M. Hamed	Data Entry Operator
Ali H. Ali	Data Entry Operator
Tariq M. Hameed	Data Entry Operator
Saadi M. Abass	Lister
Mustafa M. Abass	Governorate Secretary

Al-Najaf	
Aceel Abed Ali M.	Local Supervisor
Zainab Gatea A.	Local Supervisor
Zahraa Jafar F.	Local Supervisor
Ali Hashim W.	Interviewer
Riad Abas J.	Interviewer
Rafid Malik A.	Interviewer
Zead Ali Hadi	Interviewer
Seham Mohammed J.	Interviewer
Husain Jabber A.	Interviewer
Salah Mahdi U.	Interviewer
Najat Abdul-Zahra H.	Interviewer
Adel Hasan A.	Interviewer
Fatima Gatea J.	Data Entry Operator
Amen Salah Al Deen	Data Entry Operator
Abbas Nema S.	Data Entry Operator
Haider Radi Hasan	Lister
Hasanen Latif J.	Governorate Secretary

Al-Qadisiya	
Reyad Turkey Zaker	Local Supervisor
Rafed Ali Mhammed	Local Supervisor
Emad Abdl-Ameer Omran	Local Supervisor
Ehssan Kereem Jassim	Interviewer
Libia Husein Karem	Interviewer
Ali A. Mahssen Abed Al Rehem	Interviewer
Eman Mhamed Haseen	Interviewer
Shafeakeh Felah Mahdy	Interviewer
Aleaa Mahmood Baeoy	Interviewer
Farhan Abas Gowde	Interviewer
Hassen Ramzi Taher	Interviewer
Jenan F. Tarfan	Interviewer
Aafag Ali Yahya	Data Entry Operator
Zainab Diwan Abed	Data Entry Operator
Afkar Ali Haseen	Data Entry Operator
Alaa Hashem Aboud	Lister
M. Noori Abed Al Gabbar	Governorate Secretary

Al-Muthanna	
Ali Jawad Mosa	Local Supervisor
Ali Auda Dahi	Local Supervisor
Mohamed Saad Latif	Local Supervisor
Radi Faleh Edan	Interviewer
Alaa Atiah Abd Al-Jabar	Interviewer
Khaled Kadem Mahdi	Interviewer
Abd Al Hadi Atiah Tuba	Interviewer
Ahmed Bagir Kadiem	Interviewer
Hameed Hlasa Wanas	Interviewer
Muhsen Farhan Ramal	Interviewer
Naba Abd Al Zahra Sh.	Interviewer
Jabar Shatam Herbod	Interviewer
Maytham M. Abid	Data Entry Operator
Abdullah Adnan Hasan	Data Entry Operator
Katan Ali Sallh	Data Entry Operator
Besam Naser Husain	Lister
Shaker R. Abd Alkrim	Governorate Secretary

Thi Qar	
Asad Judi Ali	Local Supervisor
Hadi Abdul Ameer Majid	Local Supervisor
Suheil Najim Abdulah	Local Supervisor
Ruaa Jabar Kadhim	Interviewer
Hanan Jabar Ahmed	Interviewer
Kareem Sadkhan Ubeid	Interviewer
Ali Abd Al Nabi Hasan	Interviewer
Hlal Nimaa Odah	Interviewer
Kareem Khalief Hliel	Interviewer
Khadija Abdul Raheem Salman	Interviewer
Fatima Abbas Muhammed	Interviewer
Muhanad Maan Atshan	Interviewer
Hedeel Abbas Dawod	Data Entry Operator
Fatima Shyah Gazar	Data Entry Operator
Ftima Muhammed Naser	Data Entry Operator
Magid Bader Nassir	Lister
Diya A. A. J. Mezher	Governorate Secretary

Missan	
Alaa Jaseem Khleef	Local Supervisor
Mohamed Zora Kredy	Local Supervisor
Mohamed S. Hamodey	Local Supervisor
Ragad Abdul Kareem Ahmed	Interviewer
Kadeja Khalaf Ali	Interviewer
Zahraa Najeem Abdulla	Interviewer
Shatha Hasan Mohamed	Interviewer
Mead Hasan Mohamed	Interviewer
Murtada Ganem Feay	Interviewer
Ali Khalaf Ali	Interviewer
Salman Resan Katee	Interviewer
Ansam Abdul Amer Jwad	Interviewer
Mohamed Essa Chelab	Data Entry Operator
Alla Husain Kameel	Data Entry Operator
Astabraq A. Naeem	Data Entry Operator
Ahmed Raim Shnawer	Lister
Safwat Chiad Jary	Governorate Secretary

Basrah	
Abdul-Kadhum Jabir	Local Supervisor
Udei Jasim Muhammad	Local Supervisor
Ammar Kadhm Muhammad	Local Supervisor
Udei Mahmud Taha	Interviewer
Mustafa Muhamed Khudeir	Interviewer
Ehsan Abdul-Hadi Jawad	Interviewer
Muhammad Mustafa Nasir	Interviewer
Hiba Khalaf Muhamed	Interviewer
Shirui Kalaf Muhammad	Interviewer
Suhad Ali Muhamed	Interviewer
Gasani Hadi Hussein	Interviewer
Alaa Mahmud Taha	Interviewer
Enass Farik Shakir	Data Entry Operator
Muslim Rahim Jarrah	Data Entry Operator
Esraa M. Hussein	Data Entry Operator
Abdul Amer Abdul Shahid	Lister
Fuad Majid Shamki	Governorate Secretary

OBJECTIVES, METHODOLOGY, AND HIGHLIGHTS

1. BACKGROUND

The Republic of Iraq was once considered a leader in household expenditure and income surveys. Its first was conducted in 1946, with follow-up surveys in 1954 and 1961. After the establishment of the Central Statistical Organization (CSO, the precursor to COSIT), household expenditure and income surveys were carried out every three to five years (in 1971/1972, 1976, 1979, 1984/1985, 1988, and 1993), covering all Iraqi governorates (except the 1993 survey, which could not cover the three governorates in Kurdistan Region of Iraq—Sulaimaniya, Erbil, and Duhok). At the beginning of July 2002, CSO began a socio-economic household survey for 2002/2003 that again excluded those in Kurdistan Region. The survey was designed for a full year, but CSO lost most of its survey questionnaires and the database because of the war and its aftermath. The only usable data were for the months of July, August, and September 2002.

With no complete household or expenditure surveys undertaken in more than 14 years, the Central Organization for Statistics and Information Technology (COSIT) and the Kurdistan Region Statistics Organization (KRSO) launched fieldwork on the Iraq Household Socio-Economic Survey (IHSES) on November 1, 2006. The survey was carried out over a full year, covering all governorates including those in Kurdistan Region.

The World Bank provided financial support in addition to technical consultation in defining project objectives, the questionnaire, sample design, and the output tables. The Bank also provided substantial technical support for capacity building of COSIT and KRSO staff involved in fieldwork implementation, preparation of data entry programs, and analysis of the survey indicators using the Statistical Package for the Social Sciences (SPSS).

The Iraqi side prepared the fieldwork implementation plan and mechanism; contributed to the questionnaire and sample design; selected the households; prepared and trained the fieldworkers; updated the lists and maps; and implemented the fieldwork, data entry, and results generation.

IHSES constitutes the first component of the Poverty Reduction Strategy Project, which the Republic of Iraq is implementing in cooperation with the World Bank. The overall project consists of four components: (i) data collection (IHSES), (ii) poverty and inequality assessment, (iii) analysis of impact of proposed policies, and (iv) a poverty reduction strategy.

This report is the project’s first output. Forthcoming reports will provide analysis on the extent and nature of poverty and inequality, including a profile of poor Iraqis, maps of living conditions, impact analysis of existing and proposed government programs (for example, subsidies, safety nets, education, and health services), and other issues. Forthcoming publications will also include excerpts from interviews conducted with the fieldworkers who carried out this survey on the ground, illustrating the human context and personal heroism that might otherwise be disguised by the massive volume of “dry numbers” reported here. The final output of this project will be the poverty reduction strategy itself.

2. OBJECTIVES

- The survey has four main objectives. These are to
- Provide data that will help in the measurement and analysis of poverty.
 - Provide data required to establish a new consumer price index (CPI) since the current outdated CPI is based on 1993 data and no longer applies to the country’s vastly changed circumstances.
 - Provide data that meet the requirements and needs of national accounts.
 - Provide other indicators, such as consumption expenditure, sources of income, human development, and time use.

3. QUESTIONNAIRE

A. Preparation

A socio-economic survey questionnaire implemented by COSIT in 2002 served as version zero in creating the 2007 IHSES questionnaire. Version zero went through nine subsequent iterations before the final version emerged on June 6, 2006. Two rounds of pre-testing were carried out in September and November 2005. Revisions were made based on feedback from the field team, World Bank experts, and others. Seven other iterations took place before the final version was implemented in a pilot survey in March 2006. The questionnaire was revised again after the pilot survey. This process culminated with the final version of the questionnaire that was adopted and implemented for the actual survey.

B. The pre-test

A pre-test was necessary to test the questionnaire and the related field manual, and to determine the actual requirements for implementing the survey. The pre-test was carried out in two rounds in Baghdad and Diala governorates. A sample of 12 households, selected across social levels, was tested from September 22–24 in Baghdad and in the rural areas of Diala. The second round was conducted on October 31 and November 1 among 20 households in urban areas of Baghdad and rural areas of Diala.

COSIT prepared detailed reports covering implementation, teamwork, interview results, the time required to collect data, and comments on the questionnaire and manual. These reports were shared with the World Bank, which helped with a comprehensive questionnaire revision in coordination with technical consultants. A team of central supervisors and the staff of the Department of Living Conditions Statistics participated in the implementation of the pre-test.

C. Pilot survey

A pilot survey was conducted on March 15, 2006, to identify deficiencies and to ensure solid procedures for technical implementation and logistics. The pilot survey was carried out in Baghdad, Al-Qadisiya, Basrah, Sulaimaniya, and Duhouk. A sample of 216 households was selected. Thirty-six households were selected in the urban and rural areas of each governorate (except Baghdad, where 72 households were selected because of its population weight). The reference period for household consumption expenditure was 10 days. Fieldwork was conducted over 18 days. This allowed all sections of the questionnaire to be completed and the household diary expenditure data to be exported as planned.

COSIT conducted a training course in Baghdad on March 6–9 for pilot survey staff. Seventy-one COSIT staff members participated, including 6 central supervisors, 5 governorate coordinators, 12 local supervisors, 36 interviewers, and 12 data entry operators. In addition, senior COSIT personnel from the Living Conditions Department participated. The field manual was explained. Data entry was performed at the centers of the pilot survey governorates, where COSIT provided the instructional equipment and materials. Following the survey, COSIT prepared a comprehensive report on technical and logistical challenges encountered during the implementation process. The recommendations in COSIT’s report were approved, after which the questionnaire and manual were amended in coordination with the Bank consultants.

D. Questionnaire parts

The questionnaire (Volume III, Annex 3) consists of five parts, each with several sections.

- Part One—Socio-Economic Data
 - Section 1: Household Roster
 - Section 2: Rations Received and Consumption of Provisions
 - Section 3: Housing
 - Section 4: Education
 - Section 5: Health
 - Section 6: Activities, Entertainment, and Hobbies
 - Section 7: Job Search and Past Employment
- Part Two—Monthly, Quarterly, and Annual Expenditures
 - Section 8: Expenditures on Nonfood Services and Commodities (past 30 days)
 - Section 9: Expenditures on Nonfood Services and Commodities (past 90 days)
 - Section 10: Expenditures on Nonfood Services and Commodities (past 12 months)
- Part Three—Expenditure, Income, and Other
 - Section 11: Daily Expenditure on Repetitive Food and Nonfood Commodities
 - Section 12: Jobs during the Previous 12 Months
 - Section 13: Wage Earnings
 - Section 14: Nonwage Earning Activities
 - Section 15: Income from Property and Transfers
 - Section 16: Durable Goods
 - Section 17: Loans, Credits, and Assistance
 - Section 18: Risk
- Part Four—Diary of Daily Expenditure on Food Commodities
- Part Five—Time-Use Sheet

In addition, a field manual (Volume III, Annex 4) was prepared to assist fieldworkers in filling out each section of the questionnaire. During subsequent fieldwork, this manual was updated continuously as needed.

4. SAMPLE

A. Design

The survey was designed to visit 18,144 households—324 households in each of 56 strata, defined as the rural, urban, and metropolitan portions of each of Iraq’s 18 governorates. Baghdad, with five strata, was the exception. The following formula was used to calculate the sample size in each stratum:

$$n = \frac{Z^2_{1-\alpha/2} \cdot P(1-P) \cdot deff}{E^2}$$
 [I.1]

where $Z^2_{1-\alpha/2}$ equals 1.96 (at the 95 percent confidence level). An upper bound for $P(1 - P)$ is 0.25. The maximum acceptable error for the estimation of proportions was set to 7.7 percent, and the design effect (*deff*) was assumed to be 2. In all, 972 households were selected in each governorate, except Baghdad where the sample size was 1,620 households. Table I-1 summarizes the allocation of the sample into rural, urban, and metropolitan areas by governorate.

Table I-1. Number of Urban-Rural Households by Governorate					
Governorate	Urban areas			Rural areas	Total
	Governorate centers	Other urban areas	Total urban areas	Rural	
Duhouk	324	324	648	324	972
Ninevah	324	324	648	342	972
Sulaimaniya	324	324	648	342	972
Kirkuk	324	324	648	342	972
Erbil	324	324	648	342	972
Diala	324	324	648	342	972
Al-Anbar	324	324	648	342	972
Baghdad	972	324	1,296	324	1,620
Babil	324	324	648	342	972
Kerbela	324	324	648	342	972
Wasit	324	324	648	342	972
Salahuddin	324	324	648	342	972
Al-Najaf	324	324	648	342	972
Al-Qadisiya	324	324	648	342	972
Al-Muthanna	324	324	648	342	972
Thi Qar	324	324	648	342	972
Missan	324	324	648	342	972
Basrah	324	324	648	342	972
Total	6,480	5,832	12,312	5,832	18,144

B. Sample frame

The 1997 population census frame was applied to the 15 governorates that participated in the census (the three governorates in Kurdistan Region of Iraq were excluded). For Sulaimaniya, the population frame prepared for the compulsory education project was adopted. For Erbil and Duhouk, the enumeration frame implemented in the 2004 Iraq Living Conditions Survey was updated and used.

The population covered by IHSES included all households residing in Iraq from November 1, 2006, to October 30, 2007, meaning that every household residing within Iraq’s geographical boundaries during that period potentially could be selected for the sample.

C. Primary sampling units and the listing and mapping exercise

The 1997 population census frame provided a database for all households. The smallest enumeration unit was the village in rural areas and the *majal* (census enumeration area), which is a collection of 15–25 urban households. The majals were merged to form Primary Sampling Units (PSUs), containing 70–100 households each. In Kurdistan, PSUs were created based on the maps and frames updated by the statistics offices. Villages in rural areas, especially those with few inhabitants, were merged to form PSUs.

Selecting a truly representative sample required that changes between 1997 and the pilot survey be accounted for. The names and addresses of the households in each sample point (that is, the selected PSU) were updated; and a map was drawn that defined the unit’s borders, buildings, houses, and the streets and alleys passing through. All buildings were renumbered. A list of heads of household in each sample point was prepared from forms that were filled out and used as a frame for selecting the sample households.

D. Sampling Stages

The sample was selected in two stages. In the first stage, 54 sample points were selected within each stratum through systematic sampling with probability proportional to size. Each of the 3,024 sample points was then mapped and listed to reflect changes from 1997 to 2006. In the second stage, a cluster of six households was selected from each sample point using systematic equal probability sampling.

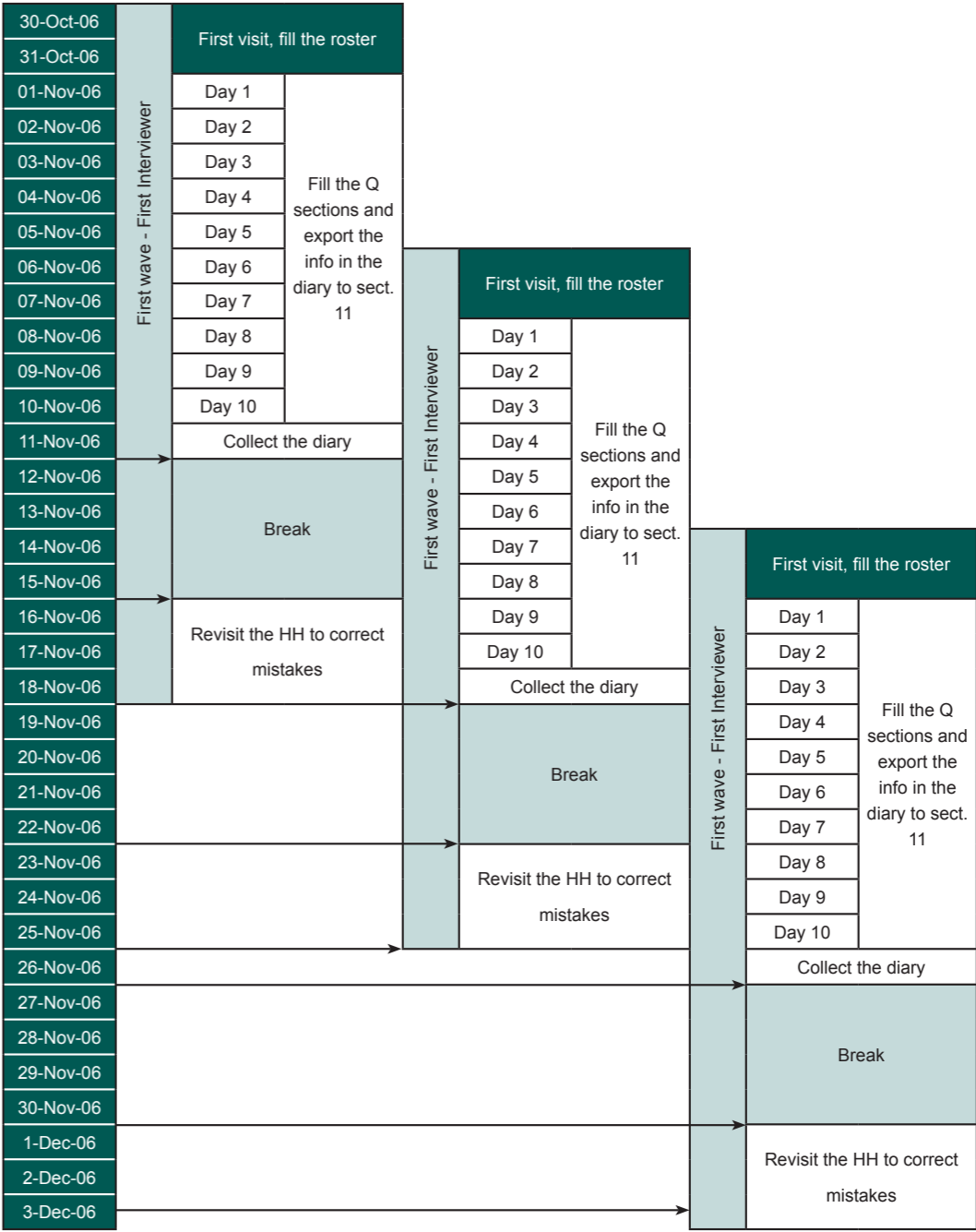
The total sample was thus composed of six households in each of 3,024 sample points. The IHSES survey visited the same nominal sample selected for the Multiple Indicator Cluster Survey 2006 (MICS) and the Iraq Family Health Survey 2006 (IFHS).

E. Sample Point Trios and Survey Waves

The sample points in each governorate (270 in Baghdad and 162 in each of the other governorates) were sorted into groups of three neighboring sample points, together called trios—90 trios in Baghdad and 54 per governorate elsewhere. (Note that the three sample points in each trio do not necessarily belong to the same stratum.) Keeping fieldworkers in close proximity to each other simplified transportation and permitted fieldworkers to assist one another.

The one-year reference period for the survey was broken down into 18 waves. The work carried out during each wave continued for 20 or 21 days. Field staff were organized into teams that each consisted of three interviewers, one data entry operator, and a local supervisor. Each team interviewed one trio during each survey wave. The survey used 56 teams in total—five teams in Baghdad and three in each of the other governorates. The 18 trios assigned to each team were allocated into survey waves at random. Figure I-1 illustrates the implementation plan for the interviewers in one team for the first wave.

Figure I-1. Implementation Plan for Interviewers in One Team (First Wave)



F. Exceptional Measures

Sometimes a team could not visit a cluster during the allocated wave because of unsafe security conditions. When this happened, that cluster was then swapped with another cluster from a randomly selected future wave that was considered more secure. If none were considered secure, a sample point was randomly selected from among those that had been visited already. The team then visited a new cluster within that sample point. (That is, the team visited six households that had not been previously interviewed.) The original cluster as well as the new cluster were both selected by systematic equal probability sampling.

Remarkably few of the original clusters could not be visited during the fieldwork. Nationally, less than 2 percent of the original clusters (55 of 3,024) had to be replaced. Of the original clusters, 20 of 54 (37 percent) could not be visited in the stratum of “Kirkuk/other urban” and 19 of 54 (35 percent) could not be visited in “Ninevah/other urban.” The other strata had far fewer clusters that could not be visited (Table I-2). In the city of Baghdad, all original clusters were visited; in the stratum “Baghdad/rural,” only 6 of 54 original clusters (11 percent) could not be visited and had to be replaced.

Table I-2. Original Clusters that Could Not Be Visited and Had to Be Replaced		
Stratum	Number of clusters originally selected	Number of clusters not visited/ replaced
Baghdad, Rural	54	6
Wasit, Rural	54	8
Al-Qadisiya, Governorate Center	54	4
Ninevah, Other Urban	54	19
Ninevah, Rural	54	8
Al-Anbar, Rural	54	2
Kirkuk, Other Urban	54	20

The required sample size of 54 clusters in Kirkuk was obtained through two means. First, eight new clusters were selected in previously visited sample points, using the approach described above. Second, 12 clusters were selected in new residential areas that had not existed at the time of the original sample frame. These 12 clusters were selected from among the newly identified PSUs using the same two-phase sampling method that had been used for the original clusters. All 54 clusters in Kirkuk were visited during the normal fieldwork period (that is, during waves 1 to 18). To account for the new residential area, the population of Kirkuk (used for constructing weights) was increased by 38,000, bringing the revised population to 1,129,000.

In Sulaimaniya, a new residential area was added that had not existed at the time of the original sample frame. Eighteen additional clusters were selected from among the newly identified PSUs with the same two-phase sampling method used for the original clusters. This brought the total number of clusters in Sulaimaniya to 72. The additional 18 clusters were visited after the completion of wave 18. The fieldwork for these additional 18 clusters is referred to as waves 19 and 20. The population of Sulaimaniya (used for constructing weights) was not increased because the population of the new residential areas moved from within the same governorate.

In Erbil and Duhok governorates, waves 3, 4, and 5 could not be implemented as planned for logistical reasons. The fieldwork for these three waves was deferred until wave 18 was completed. The fieldwork period was compressed by eliminating breaks so that the work of the three waves was completed in the time normally allocated to two waves. These additional waves are referred to as waves 19 and 20.

G. Selection probability and sampling weights

The selection probability $p(hij)$ of household (hij) in PSU (hi) of stratum (h) is given by

$$p(hij) = [k(h) \ n(hi) \ m(hi)] / [N(h) \ n'(hi)]$$
 [I.2]

where $k(h)$ is the number of PSUs selected in stratum (h) ; $n(hi)$ is the number of households in PSU (hi) as per the 1997 census; $N(h)$ is the total number of households in stratum (h) as per the 1997 census; $m(hi)$ is the number of households in selected PSU (hi) ; and $n'(hi)$ is the number of households in PSU (hi) as per the 2006 listing operation.

H. Time-use sample

The IHSES questionnaire on time use (Annex 3, Part 5) covered all household members aged 10 years and older. A subsample of one-third of the households was selected (the second and fifth of the six households in each sample point). The second and fourth visits were designated for completion of the time-use sheet, which covered all activities performed by every member of the household.

I. Response rates

IHSES reached a total of 18,144 households. Interviews were fully carried out for 98.62 percent of these households. As shown in Table I-3, the highest interview rates were in Missan (99.8 percent), Al-Muthanna (99.7 percent), and Al-Najaf (99.6 percent) governorates. The lowest were in Duhok (92.4 percent), Diala (92.8 percent), and Al-Anbar (94.3 percent) governorates. Among the 1.39 percent of interviews that were not fully completed, 0.55 percent were partially achieved; no usable information was obtained from 0.06 percent; 0.33 percent refused the interviews; 0.33 percent of the households could not be found; 0.01 percent of the houses could not be found; 0.08 percent of the housing units were found to be unoccupied; and 0.03 percent of the housing units turned out to be seasonal.

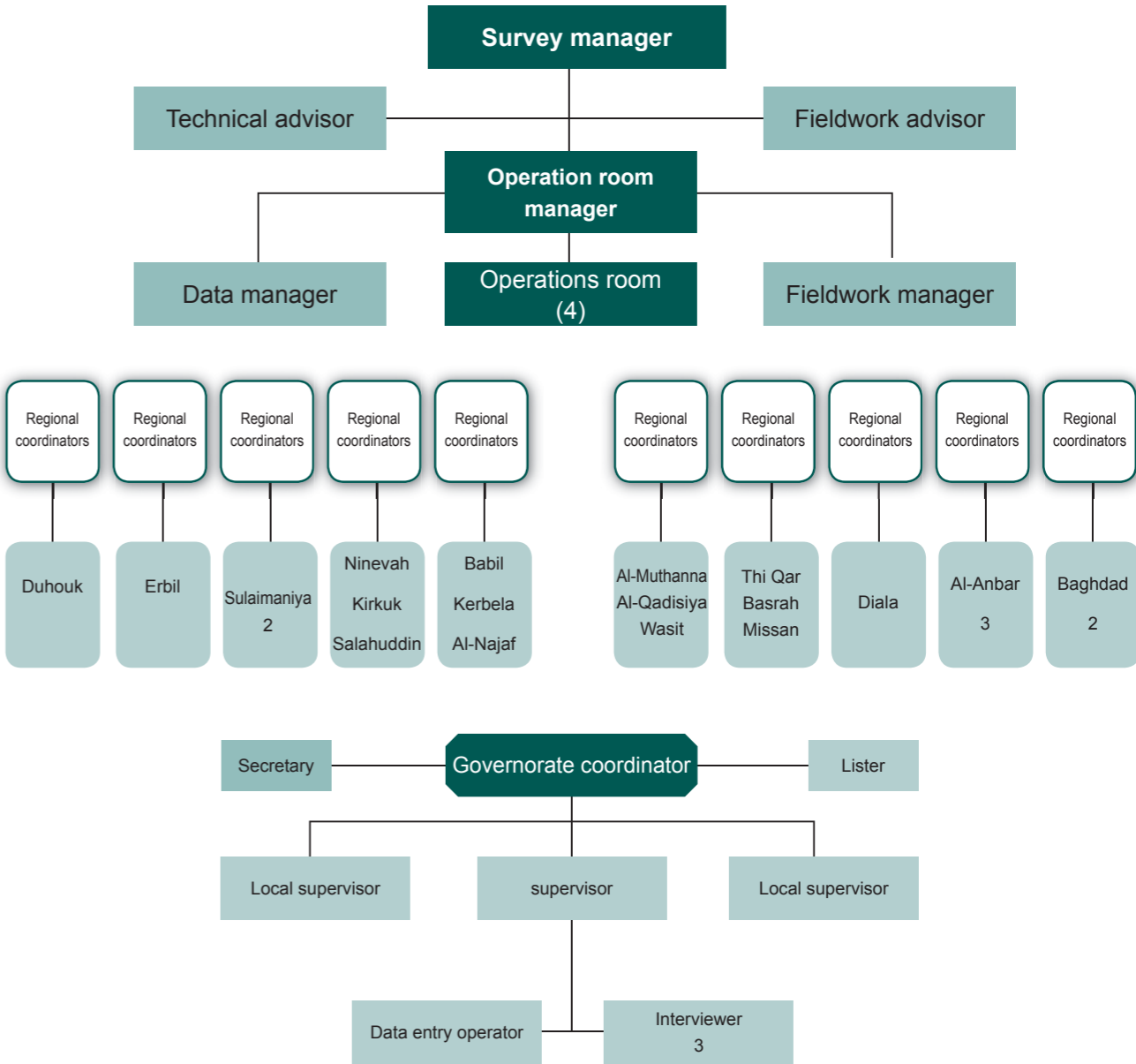
Table I-3. Response Rates by Governorate (%)			
Governorate	Response	Governorate	Response
Duhok	92.4	Kerbela	98.4
Ninevah	99.5	Wasit	98.2
Sulaimaniya	95.7	Salahuddin	98.8
Kirkuk	98.3	Al-Najaf	99.6
Erbil	96.5	Al-Qadisiya	99.4
Diala	92.8	Al-Muthanna	99.7
Al-Anbar	94.3	Thi Qar	98.5
Baghdad	98.6	Missan	99.8
Babil	98.1	Basrah	98.9

5. SURVEY TEAM

Data collecting responsibility for each trio in a wave was assigned to a field team comprising a supervisor, three interviewers, and a data entry operator. The overall survey was organized as follows:

Director of the survey	Head of COSIT
Director of the operations room	Director general for technical affairs, COSIT
Data management advisor	Head of KRSO
Fieldwork advisor	Director of Sulaimaniya statistics office
Fieldwork manager	Head of living conditions statistics, COSIT
Data management	One member of the computer department, COSIT
Regional coordinators	13 specialized technical staff (COSIT) assigned to the training of working teams in each governorate, supervision, and field checks to the regions.
Data entry central supervision	10 staff from the computer department of COSIT, who were charged with following up on data entry processes, receiving the completed data files from assigned staff, and checking accuracy before forwarding files to the data manager.
Governorate coordinators	18 administrators (the statistics office directors from respective governorates), who facilitated survey implementation and supervised the field teams and survey staff in respective governorates.
Local supervision	56 newly recruited local supervisors who were experienced in statistical work or had participated in implementation of previous COSIT surveys. Their role was to manage three interviewers and one data entry operator, to attend some interviews carried out by the interviewers, and to office- and field-check completed questionnaires.
Interviewers	168 newly recruited interviewers to visit households, conduct interviews, and collect data.
Data entry operators	56 persons recruited for their specialized skills and qualifications. Their task was to enter information from the field teams at the governorate center. Because decentralized data entry was new in COSIT, one data entry supervisor was assigned for every three governorates, except Baghdad, where one supervisor was allocated.
Listers and mappers	18 persons contracted for their specialized skill and qualifications. Each was responsible for updating one governorate's selected PSUs, preparing lists of PSU households, and preparing PSU maps or drawings showing all buildings and houses.
Governorate secretaries	18 persons contracted for their specialized skills and qualifications. Their role was to communicate with the center, including regular reports and transmitting supervision forms.

Figure I-2. IHSES staff organizational structure



6. FIELDWORK

A. Field visit schedule

A time schedule was prepared to follow up on the recording of the daily household expenditures and to ensure accurate completion of the five-part questionnaire. Seven field visits were scheduled for each household. The schedule covered all tasks—from the first visit, when the daily expenditure diary was handed over to the household, to recovering the diary on the final visit. Table I-4 shows the schedule of visits for collecting, entering, and correcting data. The interviewers delivered their finished questionnaires to the data entry operators for processing. When errors, gaps, or inconsistencies emerged, the data entry operators issued rejection reports. Interviewers would then revisit the households according to the schedule.

Table I-4. Schedule for Collecting, Entering, and Correcting Household Data			
Visits	Data Collection	Data Entry	Rejections/Correction
First visit	Distribute the booklet, encouraging households to record expenditure data by the following day, and fill out part 1 of the questionnaire.		
Second visit	Fill out sections 2 and 3 and the time-use sheet for the second household in the cluster, export expenditure data from the diary to section 11.		
Third visit	Fill out sections 4, 5, 6, and 7, and export expenditure data from the diary to section 11.		
Fourth visit	Fill out sections 8, 9, 10, and the time-use sheet of the fifth household in the cluster; transfer expenditure data from the diary to section 11.	Receive part 1 of the questionnaire.	Deliver rejections on the second day.
Fifth visit	Fill out sections 12, 13, 14, 15, and export expenditure data from the diary to section 11.	Receive corrections of part 1, and receive part 2.	Deliver the rejections on the second day for sections 1 and 2.
Sixth visit	Fill out sections 16, 17, 18, and export expenditure data from the diary to section 11.		
Seventh visit	Withdraw the diary from the households, export expenditure data of the 10th day to section 11, and review inconsistent data from any sections.	Receive corrections of sections 1 and 2, and receive section 3.	In the remaining days of the wave, deliver rejection reports for all sections as needed; receive corrections and rerun the program to complete all corrections.

B. Wave timetable

The survey was in the field from October 30, 2006, through November 8, 2007. Each interviewer worked 360 days. The first interviewer began on October 30, 2006, and ended on October 24, 2007. The third interviewer began on November 14, 2006, and ended on November 8, 2007. The end of the survey corresponded to completion of the third interviewer's work.

An 18-wave timetable was prepared for the interviewer teams. Table I-5 shows the first working day for each interviewer, the start date for registering daily expenditures in the 10-day logbook left with each household, and the final working day for the cleanup period in which households could be revisited and mistakes corrected.

Table I-5. Schedule for Collecting, Entering, and Correcting Household Data

Interviewer	First working day	Start of registration in daily logbook	Start of registration in daily logbook	Final working day
First Wave	First interviewer	30-10-2006	01-11-2006	18-11-2006
	Second interviewer	06-11-2006	08-11-2006	25-11-2006
	Third interviewer	14-11-2006	16-11-2006	03-12-2006
Second Wave	First interviewer	19-11-2006	21-11-2006	08-12-2006
	Second interviewer	26-11-2006	28-11-2006	15-12-2006
	Third interviewer	04-12-2006	06-12-2006	23-12-2006
Third Wave	First interviewer	09-12-2006	11-12-2006	28-12-2006
	Second interviewer	16-12-2006	18-12-2006	04-01-2007
	Third interviewer	24-12-2006	26-12-2006	12-01-2007
Fourth Wave	First interviewer	29-12-2006	31-12-2006	17-01-2007
	Second interviewer	05-01-2007	07-01-2007	24-01-2007
	Third interviewer	13-01-2007	15-01-2007	01-02-2007
Fifth Wave	First interviewer	18-01-2007	20-01-2007	06-02-2007
	Second interviewer	25-01-2007	27-01-2007	13-02-2007
	Third interviewer	02-02-2007	04-02-2007	21-02-2007
Sixth Wave	First interviewer	07-02-2007	09-02-2007	26-02-2007
	Second interviewer	14-02-2007	16-02-2007	05-03-2007
	Third interviewer	22-02-2007	24-02-2007	13-03-2007
Seventh Wave	First interviewer	27-02-2007	01-03-2007	18-03-2007
	Second interviewer	06-03-2007	08-03-2007	25-03-2007
	Third interviewer	14-03-2007	16-03-2007	02-04-2007
Eight Wave	First interviewer	19-03-2007	21-03-2007	07-04-2007
	Second interviewer	26-03-2007	28-03-2007	14-04-2007
	Third interviewer	03-04-2007	05-04-2007	22-04-2007
Ninth Wave	First interviewer	08-04-2007	10-04-2007	27-04-2007
	Second interviewer	15-04-2007	17-04-2007	04-05-2007
	Third interviewer	23-04-2007	25-04-2007	12-05-2007
Tenth Wave	First interviewer	28-04-2007	30-04-2007	17-05-2007
	Second interviewer	05-05-2007	07-05-2007	24-05-2007
	Third interviewer	13-05-2007	15-05-2007	01-06-2007
Eleventh Wave	First interviewer	18-05-2007	20-05-2007	06-06-2007
	Second interviewer	25-05-2007	27-05-2007	13-06-2007
	Third interviewer	02-06-2007	04-06-2007	21-06-2007

Interviewer	First working day	Start of registration in daily logbook	Start of registration in daily logbook	Final working day
Twelfth Wave	First interviewer	07-06-2007	09-06-2007	26-06-2007
	Second interviewer	14-06-2007	16-06-2007	03-07-2007
	Third interviewer	22-06-2007	24-06-2007	11-07-2007
Thirteenth Wave	First interviewer	27-06-2007	29-06-2007	16-07-2007
	Second interviewer	04-07-2007	06-07-2007	23-07-2007
	Third interviewer	12-07-2007	14-07-2007	31-07-2007
Fourteenth Wave	First interviewer	17-07-2007	19-07-2007	05-08-2007
	Second interviewer	24-07-2007	26-07-2007	12-08-2007
	Third interviewer	01-08-2007	03-08-2007	20-08-2007
Fifteenth Wave	First interviewer	06-08-2007	08-08-2007	25-08-2007
	Second interviewer	13-08-2007	15-08-2007	01-09-2007
	Third interviewer	21-08-2007	23-08-2007	09-09-2007
Sixteenth Wave	First interviewer	26-08-2007	28-08-2007	14-09-2007
	Second interviewer	02-09-2007	04-09-2007	21-09-2007
	Third interviewer	10-09-2007	12-09-2007	29-09-2007
Seventeenth Wave	First interviewer	15-09-2007	17-09-2007	04-10-2007
	Second interviewer	22-09-2007	24-09-2007	11-10-2007
	Third interviewer	30-09-2007	02-10-2007	19-10-2007
Eighteenth Wave	First interviewer	05-10-2007	07-10-2007	24-10-2007
	Second interviewer	12-10-2007	14-10-2007	31-10-2007
	Third interviewer	20-10-2007	22-10-2007	08-11-2007

C. Training

The training of the main trainers was carried out in three phases. The first phase was carried out in Beirut in June 2006, including seven days of theoretical training. The second phase was implemented in Iraq. Trainees received applied training, with each trainee filling out all parts of the survey questionnaire for two randomly selected households. The third phase was implemented in Amman in July 2006. The main trainer teams were represented by the regional and governorate coordinators. They discussed the key challenges to be encountered in taking the questionnaire to the field, as well as the training of trainers who would then instruct the fieldworkers.

In September 2006, nine centers were opened across Iraq to train local supervisors, field interviewers, and data entry operators. The training, which was specifically designed and highly tailored to the circumstances of Iraq, continued for 23 days. Trainees received theoretical and applied lessons in data collection and data entry. Questionnaires completed during the training were used to test the data entry program.

Training centers were opened in Sulaimaniya, Erbil, Kirkuk, Ninevah, Baghdad (two centers), Al-Najaf, Al-Qadisiya, and Thi Qar. Altogether, 168 interviewers, 56 local supervisors, 56 data entry operators, and 18 governorate secretaries were trained. A number of staff from the statistics offices in the governorates were also trained (three from each governorate, five from Baghdad) as well as alternate field staff to cover emergencies and dropouts.

D. Decentralized data entry, field follow-up, and supervision forms

Fieldwork consisted of seven visits to each of nearly 18,000 households during 18 waves lasting 20 days each over 12 months. Given the breadth and complexity of this undertaking, a solid and continuous follow-up system was essential.

As soon as Part 1 of the questionnaire was completed and checked by a supervisor, it was handed off to the team's data entry operator. The data entry operator entered the collected information and produced an approval/rejection report flagging anomalies. Reports were returned for follow-up and necessary corrections while the interviewers were still in the field working on Part 2 of the questionnaire. The completed Part 2 and corrected Part 1 was then returned to the data entry staff, with further rejection reports and follow-up as needed. This cycle was continuous for all parts of the survey.

The IHSES Core Team responsible for fieldwork supervision worked closely with World Bank technical consultants. Careful and continuous attention was paid to ensuring highly accurate indicators. When mistakes were detected, corrective measures were drafted and circulated to each governorate. To facilitate field follow-up, office review and data processing were decentralized to the governorate centers so that many potential mistakes were avoided during each wave cycle. IHSES follow-up in the field was systematic but flexible, depending on the evidence provided by the following evaluation forms (Annex 5):

- Form 1. Office check of the questionnaires
- Form 2. Interviewer's performance
- Form 3. Reinterview
- Form 4. Governorate coordinator
- Form 5. Regional supervisor's regional control and checking form
- Form 6. Operations room assessment of the work performed in the governorates

7. DATA EDITING AND PROCESSING

A. Software packages

The data processing system for the IHSES survey was constructed primarily with CSPro, a specialized package widely used for census and household surveys. In addition, Visual Basic was used to build the user's menu for the system.

Validation rules were established for most fields, with screens to control the entered data. The objectives of these validation rules are to

- Ensure accurate entry and editing of the questionnaire data.
- Check that all rules and instructions for filling out the questionnaire are followed—for example, skipping between fields and filtering the data.
- Provide capacity to detect, follow up, and correct inconsistencies.

Data entry, editing, and data processing employed the following programs:

- Data entry. CSPro was primarily used to write the system. Screens were built to conform with the numbering of the questionnaire items and the field names.
- Data editing and consistency. CSPro was used to create rejection reports in the three languages used in the survey (Arabic, Kurdish, and English). The programs were prepared to detect and report a total of 315 abnormal situations in the data.
- Exporting data to the system to produce output tables. SPSS was used to produce output tables. A separate program was designed to transfer the raw data into the SPSS databases for statistical analysis. The exporting process produced files corresponding to the parts of the questionnaire.
- Processing for remaining rejections. The STATA software package was used to create programs to check and correct unresolved errors or rejections in the data files after the fieldwork had ended. These programs relied on mathematical and statistical methods and comparisons among households and governorates. They were able to identify outliers and adjust values automatically. When these data checks were complete, the files were converted from STATA to SPSS in order to create the output tables.
- Remote access. Log-Me-In service through the Internet was used, allowing the data management team at a central location to follow up and download files from the data entry computers in the field.

B. Stages of data processing

To ensure accuracy and consistency, the data were edited at the following stages:

- Interviewer.* Doublechecks all answers on the household questionnaire, confirming that they are clear and correct. Writes in codes by hand for each field. Some calculations are made within the questionnaire.
- Local supervisor.* Checks to make sure that questionnaire has been completed correctly before being forwarded to the data entry operator.
- Data management.* During data entry, rejected items are flagged through editing and a consistency check program, based on validation rules and price ranges specified in the program. These controls are repeated, first during the entry sessions and then when the data is entirely entered. The same entry program is used, with adaptations for interactive work and for batch-runs without entry operators.
- Statistical analysis.* After exporting the data files from CSPPro to SPSS, the Statistical Analysis Unit uses program commands to identify irregular or nonlogical values, in addition to auditing some variables.
- World Bank consultants in coordination with the COSIT data management team.* The World Bank technical consultants use additional programs in SPSS and STATA to examine and correct remaining inconsistencies within the data files. The software detects errors by analyzing questionnaire items according to the expected parameters for each variable.

8. ORGANIZATION AND USE OF THE TABULATION REPORT

A. Organization of the report

The following section of Volume I provides some selected highlights from the data tables in Volume II. These highlights are not comprehensive, nor are they necessarily the “most important” findings from the survey. They are presented here only to illustrate the wealth of socio-economic information that is now available to be mined.

Volume II presents actual data tables. The 10 sections of cross-tabulations correspond to the main sections of the IHSES questionnaire. Most of the tables show distributions by percentages of individuals or households. In most cases, the variables are disaggregated by relevant categories such as governorate, urban-rural, male-female, and income level. The first table in each section (except Time Use, section 6) provides an overview showing the actual number of observations in each response category, as well as the percent of the total represented by that response.

Volume III of the report is comprised of five annexes. Annex 1 (Standard Error) refers to confidence interval and standard error tables. Annex 2 shows the statistical classifications used in coding the questionnaire. Annex 3 contains the complete questionnaire. Annex 4 contains the field manual used to train interviewers and to guide day-to-day work in the field. Annex 5 contains the evaluation and supervision forms.

B. A cautionary note on price-based data and its use of this report

The IHSES database provides a foundation; it is not the end in itself. The data presented in Volume II will now be processed further and built upon to create an analytic framework for policy planning based on evidence. It should be emphasized that the presentation of data in Volume II should not be confused with the forthcoming analysis of these data. The present Tabulation Report simply shows first results in an organized tabular format.

It is extremely important to note that no adjustments have been made for variations in prices across regions or for inflation. The IHSES survey team sampled households from every region of Iraq, and the interview team was in the field for slightly more than a full year. This means that price-based data—for example, household expenditure as well as most data related to income, loans, and aid—need to be adjusted for regional differences in prices and fluctuations in prices. Without adjustments to variability in the value of the dinar, calculations such as averages are not meaningful. Comparisons using nonadjusted prices are not valid.

Similarly, the value of the Iraqi dinar in relation to foreign currencies varied substantially during the year of data collection. Conversions to currencies such as the U.S. dollar and the euro were beyond the scope of the present task. However, adjustments are now under way to make values comparable, and these will be published. In the meantime, unadjusted currency amounts from the tables in Volume II should not be used for that purpose.

The IHSES survey was designed to produce primary data that will help Iraqi policy makers to assess social welfare and chart a course for the future. The Tabulation Report does not draw policy implications. It simply provides a first look at the data, as illustrated by the selected highlights in the following section.

9. TABULATION HIGHLIGHTS

Demographic characteristics

Household characteristics. The average household consists of 6.9 individuals, of whom 39.8 percent are children under age 15 (Table 1-6). 18.2% of households have no children living with them, while 31.3% of rural households and 15.5% of urban households include five or more children (Table 1-5).

Urban/rural population distribution. 70.9% of the population is classified as urban, of which 41.5% live in governorate centers and 29.4% live in other urban areas. The governorate of Baghdad has the highest urban population (92.7%), followed by Erbil (81.6%) and Sulaimaniya (80.8%). The governorate of Diala has the highest rural population (55.7%), followed by Salahuddin (54.7%) and Al-Muthanna (50.1 %) (Table 1-3).

Population movement. Although 61.8% of individuals have lived in their dwelling for 20 years or more, 3.9% of the population have been in their current location for two years or less. 11.4% of the population in Missan and 10.4% in Sulaimaniya have lived in their current dwelling for two years or less (Table 2-2).

Housing and environment

Home ownership. 78.6% of the population live in dwellings that their household owns—ranging from a low of 62.7% in Baghdad to a high of 93.6% in Al-Muthanna. In rural areas, 89.2% of the population own the dwelling that they live in, compared to 72.3% in governorate centers (Table 2-35).

Shared space. 81.3% of individuals live in one-household housing units. However, 6.1% of individuals in Basrah and 5.7% in Al-Najaf live in dwellings with four or more households (Table 2-1). There are 51.0 rooms per hundred persons, which translates to an average of just under 2.0 persons per room and 3.3 persons per bedroom overall—from about 2.8 persons per bedroom in Baghdad, Al-Anbar, and Salahuddin (least crowded), to a high of more than 4.0 persons per bedroom in Missan and Kerbela (most crowded) (Table 2-1).

Adverse environmental conditions. People suffer from environmentally adverse conditions in their housing as follows: stagnant water (56.4%), insects and rodents (49.9%), excess humidity (39.0%), nearby open sewage outlets (36.3%), nearby garbage and dirt (36.1%), security risks (30.7%), insufficient light (28.2%), foul odors (28.2%), dust (28.1%), noise (22.0%), insufficient ventilation (15.1%), and smoke and gases (13.8%) (Table 2-40).

Waste disposal. Half of all individuals have septic tanks in their homes to dispose of wastes, ranging from more than 90% in Diala and Al-Anbar, to virtually none in Erbil. Overall, 26.8% of individuals use public sanitation networks—more than two-thirds of individuals in Baghdad and in Sulaimaniya, and virtually none in Ninevah. Open drains are used by 15.1% of people—from about two-thirds in Erbil, to virtually none in Al-Anbar, Baghdad, and Duhouk (Table 2-17). About 74.1% of persons live in dwellings with an inside toilet exclusive to their household; 9.1% share an inside toilet with other households; and 14.0% use an outside toilet that is exclusive to their household (Table 2-25). Overall, 55.4% of persons dispose of garbage by throwing it outside their housing unit. 28.7% of persons live in households where garbage is collected by the municipality (Table 2-16).

Water supply. 81.3% of individuals live in dwellings connected to public water networks—ranging from 98.3% in Baghdad to just 45.6% in rural areas (Table 2-18). However, only 12.5% of persons whose dwelling is connected to the public network report that their supply of water is stable. 29.2% report daily interruptions; 17.6 percent report weak water supply; and 16.4% report interruptions more than once a week (Table 2-19). In rural areas, 26.1% of households use rivers and creeks; 9.5% use tanker trucks; 8.2% use open wells; and 4.7% use public taps (Table 2-18).

Electricity. The public electrical grid is identified as the main source of electricity for 76.4% of individuals (Table 2-28); however, it provides on average only 7.9 hours of power per day. The lowest rate is in Baghdad, with only 5.0 hours of power supply per day (Table 2-30). Only 22.4% of persons are able to rely solely on the public network for electricity to their housing unit. 75% of individuals supplement the public network with one or two other power sources (Table 2-29). On average, community generators provide 6.4 hours and private generators provide 4.0 hours of additional power per day (Table 2-30).

Television. 95.2% of individuals report a television in their household, the most commonly owned item of 36 durable goods (Table 2-59). 87.8% of individuals watch television for an average of 3.4 hours a day (slightly more for males than for females) (Table 6-1).

Phones and Internet. There are on average 1.56 mobile phones per household—the highest rate in Sulaimaniya and Erbil (about 2.6 phones per household), and the lowest rate in Al-Anbar (0.4 phones per household). There is an average of just under 0.3 telephone lines per household in urban areas, but only 0.03 lines per household in rural areas. Only about 0.03% of households have Internet connections installed in their homes (Table 2-58).

Vehicle ownership. 25.3% of households report access to a car for private use—ranging from 13.5% of households in Missan and 16.9% in Baghdad, to 52.7% in Erbil. In addition, 1.4% report a minivan or medium-size bus for their private household use, and 4.1% report owning a taxi that the household also uses (Table 2-59).

Education and culture

Literacy and second language. 80.9% of Iraqis older than 10 years are literate—88.4% of males and 73.6% of females (Table 3-10). 82.2% of those older than 10 years old speak, 89.8% read, and 88.9% write a language other than their mother tongue (Table 3-3).

School enrollment. Primary school enrollment averages 84.8% among Iraqi 6–11 years of age, with the lowest rate (70.1%) among rural girls (Table 3-5). Urban/rural and male/female gaps emerge by intermediate and secondary school—for example, of youth 12–14 years of age, 45.5% of urban boys and 41.5% of urban girls are in intermediate school, compared with only 28.8% of rural boys and just 16.6% of rural girls (Table 3-6). Of youth 15-to-17 years old, about 25.8% of urban boys and 25.1% of urban girls are enrolled in secondary school; however, the secondary enrollment rate falls to 14.5% for rural boys and just 7.2% for rural girls (Table 3-7).

Health

Childbirth and pregnancy. 39.7% of all married women have given birth within the past two years (Table 4-13). 11.8% of all married women are pregnant during the survey reference period (Table 4-14).

Cost as a factor when injured. Cost is at least 10 times more likely to be given as a reason for not seeking medical treatment than is inaccessibility of services, lack of female (or male) health attendants, concerns for safety, or “social reasons” (Table 4-12).

Human consequences of civil strife. 4.9% of all injuries reported during the previous month were attributed directly to civil armed conflict (Table 4-7). The percentage of disabilities attributed to war, civil armed conflict, land mines, chemical strikes, and depleted uranium (14.3%, taken together) is slightly greater than the percentage of disabilities attributed to non-work related diseases (Table 4.2).

Labor force and use of time

Labor force participation and unemployment. Labor force participation rises with level of education. Only 24.2% of illiterate persons 15 years old or over participate in the labor force, compared with 92.6% participation among those with a higher degree (Table 5-3). The overall unemployment rate was 11.7% for both men and women, though higher among younger adults—16.9% for men and 35.7% for women 20–24 years old (Table 5-3).

Public sector employment. About a third of all Iraqi wage workers are employed by the government (30.4%) and public (2.1%) sectors (Table 5-21). 45.6% of employed adults work in jobs covered by pensions and social security (Table 5-23).

Men’s activities/women’s activities. Women spend an average of four hours a day (242 minutes) preparing food, cleaning the house, and caring for children, compared with only 28 minutes commuting to and working at jobs. By contrast, men spend about four hours a day (234 minutes) commuting to and working at jobs, and only 10 minutes a day preparing food, cleaning the house, and caring for children (Table 6-1).

Food rations

Rations. Virtually all households (99.7%) have at least one ration card (Table 7-1). During the period of the survey, 79.1% of households received wheat flour rations during the previous month, but only 58.1% received their ration of rice (Table 7-6). Wheat flour received as rations accounted for 55.4% of total wheat flour consumed in the previous month (Table 7-9).

Expenditure

Distribution of expenditures. Overall, 35.6% of household expenditure goes to food—ranging from 24.1% in Erbil to 44.5% in Al-Anbar. Another 29.0% goes to housing, water, gas, electricity, and fuels. Another 10.4% goes to transportation—ranging from 4.2% in Diala to 20.6% in Erbil (Table 8-3).

Durable goods. 93.5% of individuals’ homes include an electric or gas cooker; 88.9% a refrigerator, and 88.3% a satellite dish. Among less commonly owned items, only 0.2% of individuals’ homes include a dishwasher; 3.3% a motorbike; 7.4%, a personal computer; and 15.7%, a bicycle (Table 2-59).

Income

Sources of income. Overall, households receive 45.3% of their income from wages and salaries; 25.0% from self-employment and employer income; 19.8% from property income; 5.2% from social payments; 4.7% from “transfers”. However, these percentages vary geographically. For example, wages and salaries account for 31.4% of household income in Al-Najaf but 56.7% in Basrah; self-employment and employer income for 8.8% in Diala but 43.1% in Al-Najaf; and property income for 14.2% in Al-Muthanna but 27.3% in Erbil (Table 9-3).

Loans, assistance, risk

Borrowing. 37.8% of Iraqi households had outstanding loans, debts, or advances owed to institutions or other households, with slightly higher rates in rural than in urban areas (Table 10-1). Of this borrowing, 81.4% was from relatives in Iraq or abroad, friends and neighbors; 10.7% was from traders (Table 10-2).

Assistance. 60.7% of households received some form of assistance during the previous year, including 44.1% from government—14.2% from friends and relatives, 2.1% from international organizations, and 0.3% from private organizations (Table 10-5).

Risks from violence. During the past 12 months, 6.6% of households were affected directly by violence due to the abnormal security situation; 3.0% were affected by kidnappings and threats to life; and 2.9% were affected by other violence (Table 10-7). 30.7% of individuals live in housing where they are affected by security risks (Table 2-40).