

Kiribati

National Statistics Office

Ministry of Finance and Economic Development

PO Box 67

Bairiki, Tarawa

Phone: (686) 21816 / 21815

Fax: (686) 21307

STRICTLY CONFIDENTIAL



Kiribati

Household Income and Expenditure Survey 2006

HOUSEHOLD DIARY

Island:

Village:

EA:

--	--	--

Household Number:

--	--	--

Household Head Name:

Interviewer's Name:.....

Confidentiality of Information Supplied

- All data supplied in this questionnaire will remain strictly **CONFIDENTIAL** in accordance with the Kiribati Statistics Act, 1977.
- The information you give will be combined with information from other households to produce accurate and up to date statistics on the income and expenditure patterns of households.
- The information will be used solely for statistical purpose **ONLY**.

Currency to be used

- Report all values in Australian Dollars (\$A).

Survey period

- All information in this questionnaire relates to the period of 14 days.

Weekly Diary

- This questionnaire has 4 sections. You will be asked to provide the following information:
 - 1. Items Bought**

The first section of the diary for each day will be for recording all items bought in a store, street vendors, or from any other places (including credit).
 - 2. Consumption of Items Produced by the Household**

The second section of the diary for each day will be for recording all items produced by the household (e.g., from the garden/plantation, livestock, fishing activities, etc). Do not include food items received from other persons.
 - 3. Gifts**

The third component of the diary will be for recording all items received from other households or given to other households (Cash or Goods).
 - 4. Winnings from Betting, Raffles and Lotteries**

The last component records information regarding winnings from any form of gambling (bingo, raffles etc.)

Section 1 Items Bought

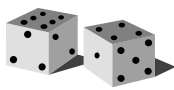
1.1 How to fill this diary

Write down everything you bought, whether paid by cash, check or on credit. If you have not bought anything today or consumed any of your own produce, place a tick inside the circle on the top of the page for the day.

Give as much detail about each item as possible

To help you remember the things you or your household members have bought or spent money on, keep all receipts and fill in the diary when you get home.

1.2 SPECIAL INSTRUCTIONS FOR SOME ITEMS



RAFFLES, BINGO

Write down the cost of any raffle ticket purchased or bingo cards played.

If you collect any winnings during the week, then write these down in section 4.

NEWSPAPERS AND MAGAZINES

Write down all spending on newspapers and magazines. If you paid an account or subscription during the survey period write that amount down too.

CHILDREN'S POCKET MONEY

Write down the payments of pocket money made to children. The child must not record any item bought out of that pocket money else it will be double counted.



If money was given to a child for a particular item then record the item - not as pocket money.

DONATIONS TO THE CHURCH OR OTHER ORGANISATIONS

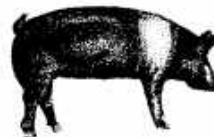
If you make regular donations to the church (i.e. tithe on income) then write the amount down for the week with the description



'Regular church donation'.

If you make irregular contributions or put money in the plate at church then enter the amount and describe as 'church donation'.

CONSUMPTION OF ITEMS PRODUCED BY THE HOUSEHOLD



Estimate what you would have to pay to buy the same items in a shop, market, etc



1.2 SPECIAL INSTRUCTIONS FOR SOME ITEMS (*continued*)

FULL MEALS AT RESTAURANTS, LIGHT MEALS AND TAKEAWAYS

When you eat a full meal at a restaurant, you do not need to write down each item you bought. Please just describe it as 'dinner', 'lunch', etc.

For light meals and takeaways write down separately each item you bought, e.g. takeaway chips, sandwiches, filled roll, meat pie, and give the cost of each item. Please also describe the kind of drink as a separate item.



GROCERIES

Describe in full each item you bought. Please do not just put 'groceries'.

DRINKS AT STORES, CLUBS OR BARS AND RESTAURANTS

For drinks bought at a store, separate costs into the cost of beer, the cost of spirits, the cost of liqueur, the cost of fruit juice etc. For drinks bought at a pub or club, also say what type was bought and give the separate costs of each type if possible. If you can't remember the type of drinks write 'Drinks at (name of bar)' and the total amount spent.

FRESH FISH

Please give the type e.g. Tuna, Wahoo, Flying Fish etc

BISCUITS

Write down the kind of biscuit.

FRUIT JUICE

Write down the brand and the kind of juice e.g. Just Juice - Tropical Punch, - Tomato

MEAT

Please describe in full e.g. roast beef, stewing steak, corned beef, lamb chops etc

FRUIT AND VEGETABLES

Give the type, e.g. pineapple, papaya, Chinese cabbage etc and say whether they are fresh, chilled, canned or dried. Describe quantities in terms of weight where possible.

BREAD

Please describe bread as 'sliced white bread' or whole wheat' etc. If possible use a separate line for each type, and give the total cost of each type.

PET FOOD

Describe fresh meat or fresh fish bought for a pet as 'fresh fish for cat', 'fresh meat for dog'. For other pet food, please describe as 'canned dog food', dried cat food', frozen cat meat



etc

Not sure what to do?

Make a note of the problem and discuss it with the interviewer on their next visit.

EXAMPLE OF A CORRECTLY COMPLETED DIARY

Date: ____/____/____

Day in week: _____

SECTION 1 ITEMS BOUGHT

If you have not bought or consumed any of your own produce today, please tick (✓) circle



Quantity	Weight	Give full description of item	Amount paid or charged	Office use only
1		Newspaper ()	.75	
1	425 gm	Loaf white bread	\$1.75	
1	20 lbs.	Bags Rice	\$7.50	
1	340 g	Tin corned beef	\$2.75	
1		Pack cigarettes (Benson&Hedges)	\$4.50	
2		Pieces fried chicken	\$2.50	
3	7oz	Bags potato chips	\$7.50	

SECTION 2. CONSUMPTION OF ITEMS PRODUCED BY THE HOUSEHOLD (e.g., Vegetables, Fruit, Fish, Meat, etc)

Quantity	Weight	Give full description of item	Estimated local value at shop/market	Office use only
1	10	Basket of taro	\$12.00	
1	5lbs	Leg of Pork	\$7.50	
4		Green coconuts	\$4.00	
1	5lbs.	Piece Tuna	\$6.25	

Day in Week: Monday

[illegible]

SECTION 1. ITEMS BOUGHT (cont)

Quantity	Weight	Give full description of item	Amount paid or charged	Office use only

SECTION 2. CONSUMPTION OF ITEMS PRODUCED BY THE HOUSEHOLD (e.g., Vegetables, Fruits, Fish, Meat, Firewood, etc)

Quantity	Weight	Give full description of item	Cost of buying the same thing at the local shop/market	Office use only

Day in Week: Tuesday

[illegible]

SECTION 1. ITEMS BOUGHT (cont)

Quantity	Weight	Give full description of item	Amount paid or charged	Office use only

SECTION 2. CONSUMPTION OF ITEMS PRODUCED BY THE HOUSEHOLD (e.g., Vegetables, Fruits, Fish, Meat, Firewood, etc)

Quantity	Weight	Give full description of item	Cost of buying the same thing at the local shop/market	Office use only

Date: ____/____/____

Day in Week: Wednesday

If you have not bought or consumed any of your own produce today please tick (✓) in circle



SECTION 1 ITEMS BOUGHT

[illegible]

SECTION 1. ITEMS BOUGHT (cont)

Quantity	Weight	Give full description of item	Amount paid or charged	Office use only

SECTION 2. CONSUMPTION OF ITEMS PRODUCED BY THE HOUSEHOLD (e.g., Vegetables, Fruits, Fish, Meat, Firewood, etc)

Quantity	Weight	Give full description of item	Cost of buying the same thing at the local shop/market	Office use only

Day in Week: Thursday

[illegible]

SECTION 1. ITEMS BOUGHT (cont)

Quantity	Weight	Give full description of item	Amount paid or charged	Office use only

SECTION 2. CONSUMPTION OF ITEMS PRODUCED BY THE HOUSEHOLD (e.g., Vegetables, Fruits, Fish, Meat, Firewood, etc)

Quantity	Weight	Give full description of item	Cost of buying the same thing at the local shop/market	Office use only

Day in Week: Friday[illegible]

SECTION 1. ITEMS BOUGHT (cont)

Quantity	Weight	Give full description of item	Amount paid or charged	Office use only

SECTION 2. CONSUMPTION OF ITEMS PRODUCED BY THE HOUSEHOLD (e.g., Vegetables, Fruits, Fish, Meat, Firewood, etc)

Quantity	Weight	Give full description of item	Cost of buying the same thing at the local shop/market	Office use only

Date: ____/____/____

Day in Week: Saturday

If you have not bought or consumed any of your own produce today please tick (✓) in circle ☐



SECTION 1 ITEMS BOUGHT

[illegible]

SECTION 1. ITEMS BOUGHT (cont)

Quantity	Weight	Give full description of item	Amount paid or charged	Office use only

SECTION 2. CONSUMPTION OF ITEMS PRODUCED BY THE HOUSEHOLD (e.g., Vegetables, Fruits, Fish, Meat, Firewood, etc)

Quantity	Weight	Give full description of item	Cost of buying the same thing at the local shop/market	Office use only

Day in Week: Sunday[illegible]

SECTION 1. ITEMS BOUGHT (cont)

Quantity	Weight	Give full description of item	Amount paid or charged	Office use only

SECTION 2. CONSUMPTION OF ITEMS PRODUCED BY THE HOUSEHOLD (e.g., Vegetables, Fruits, Fish, Meat, Firewood, etc)

Quantity	Weight	Give full description of item	Cost of buying the same thing at the local shop/market	Office use only

SECTION 3 GIFTS OF CASH OR GOODS

A. During the 7 days you kept this diary, did you or any member of the household:

Give to people outside your household any gifts of cash or goods
(Tick appropriate circle)

Yes ☐ Go to 3.1 **OR** No ☐ Go to B

(This would include **fruit** and **vegetables** your household has grown; **fish** you have caught, **poultry**, **pigs** etc you have raised, **handicrafts** you have made).

3.1 CASH GIVEN AWAY (Please write code where appropriate) (Give value in Aus Dollars)

Day	Amount \$	Recipient? 1 Relative 4 Church 2 Friend 5 Other 3 Employer	Where do they live? 1 Kiribati 2 Overseas	Office Use Only

3.2 GOODS GIVEN AWAY AS GIFTS (Please write code where appropriate)

Day	Qty	Wt	Description of goods given	Estimated value of goods given	Recipient? 1 Relative 2 Friend 3 Employer 4 Church 5 Other	Where do they live? 1 Kiribati 2 O'seas	Office Use Only

B: During the 7 days you kept this diary did you or any member of your household:

Received from people outside your household any gifts of cash or goods? (Tick appropriate circle)

Yes ☐ Go to 3.3 **OR** No ☐ Go to Section 4

(This would include **fruit** and **vegetables** your household has received; **fish** you have received, **poultry**, **pigs** etc you have received and **handicrafts** you have received).

3.3 GIFTS OF CASH RECEIVED (Please write code where appropriate)

(write value in Aus Dollars)

Day	Amount \$	From whom received? 1 Relative 2 Friend 3 Employer 4 Church 5 Other	Please do not include loans	Where do they live? 1 Kiribati 2 Overseas	Office Use Only

3.4 GOODS RECEIVED AS GIFTS (Please write code where appropriate)

Day	Qty	Wt	Description of goods received	Estimated value of goods received	Recipient? 1 Relative 2 Friend 3 Employer 4 Church 5 Other	Where do they live? 1 Kiribati 2 O'seas	Office Use Only

SECTION 4 WINNINGS FROM BINGO AND RAFFLES etc.

If at any time during the 7 days covered by this diary, you or members of your household receive any money from any form of gambling, please record below the TOTAL AMOUNT received.

Any expenditure on betting or gambling (e.g., Price of lottery tickets) made during the last 7 days covered by this diary should already have been recorded in the main part of the diary (Section 1 on the day the expenditure was made).

Day	Type of Betting	Amount won	Office use only

Have you remembered to write down everything you bought or contributed at:-

- Hotels and Clubs
- Service Stations
- Village shops
- Takeaways
- Street sellers
- Work
- Village Fairs

Have you also remembered?

- The hire of video tapes and DVDs
- Cigarettes
- Donations
- Gambling bets i.e. bingo and raffles

**Thank you for the time and
effort you have
put into completing this diary**