



IDEA INTERNATIONAL INSTITUTE

IHLCA



CE

---

				.....	1
				.....	2
				.....	11
				.....	12
				.....	14
1		1		.....	16
1-1	1	1990	2015		16
1-2	2	1990	2015		22
2		2		.....	24
2-1	3	2015			24
3		3		.....	27
3-1	4		2005		27
				2015	27
4		4		.....	32
4-1	5	1990	2015	5	32
5		5		.....	34
5-1	6	1990	2015		34
6		7		.....	36
6-1	9				36
6-2	10	2015		.....	38

---

6-3	11 2020	100	
			..... 41
7	8		
			..... 42
7-1	16		
			..... 42
			..... 44
	- 1		..... 45
	- 2		..... 48
			..... 50

---

CE

(IHLCA)

CE

(IHLCA)

®

®

CE

(IHLCA)

(UNDP)

Mr. Charles Petrie  
Ms. Akiko Suzaki

(UNDP)  
(UNDP)

---

1

(MDG)

MDG

IHLCA  
(16)  
1

(16)

MDG

(48)

1

1 1990

2015

2

10%

CE

40%

( )

( )

2%

3

32%

73%

( ) (52%)

( ) (51%)

---

<sup>1</sup> HIV/AIDS

---

12%

(15%)

(22%)

4

0.07

7%

(

)

(0.23)

( ) (0.12)

( ) (0.12)

(0.02)

(0.03)

(0.04)

5

(

)

( )

( )

6

(20%)

(20%)

1

MDG

(20%)

12.2%

10.7%

12.9%

( )

( )

( )

2 1990

2015

7

2

ပုံနှိပ်

MDG  
2

5

0-59

3

5

4

ပုံနှိပ်

35%

ပုံနှိပ်  
32%

34%

ပုံနှိပ်

38%

ပုံနှိပ်

32%

60%

42%

36%

21%

( )

24%

( ) 25%

2

MDG

3

(Salter)

( )

4

( )

( )

(€ )

€

(€ )

( )

( )

5

---

2

3 2015

8

3

5

MDG

85%

84%

88%  
80%

87%  
67%

( )  
93%

( )

9

15-24

6

3

91%

96%

92%

88%

94%

( ) 79%

( ) 55%

71%

97%

---

5

MDG

6 IHLCA

)

( ( )

MDG



---

3

4 2005

2015

10

4  
7

MDG

96 ( 100 )  
98 88

101

94

100

( )

( ) 85

11

4

MDG

103 ( 100 )

104

99

100

72

74

90

94

12

15-24

4

MDG

15-24

98 ( 100 )

(98 99 )

( )

100

( )

---

7

MDG



5

6 1990 2015

15 MDG 6<sup>8</sup> CE

)<sup>9</sup> (

(89%) (77%) 73% (68%) (65%)

(45%) (49%)

7

9

16 9 MDG<sub>11</sub> 10

CE (92%) (96%)

(82%)

( ) 84% (69%)

---

8 MDG CE

9

10

11 MDG ( )

(PPP) ( ) ( CFCs (ODP

)

)

---

10 2015

17

10

MDG

(55%)  
63%  
90%  
(36%) (41%)  
( 59% 64% )

18

10

MDG

76%

64%

67%

59%

71%

60%

36%

53%

( ) 56%

11 2020

100

19

11

MDG

) (

99%

(90%)

---

8

16

20

15-24

16

MDG

⊕

12

4%

6

⊕

3%

10%

15-24

⊕

⊕

10%

⊕

5%

---

FPL	Food Poverty Line
PL	Poverty Line
SD	State/Division
UNDP	United Nations Development Programme
WHO	World Health Organization



---

2-2		.....	48
2-3	7	.....	49
2-4		.....	49
(1)	(%)	.....	16
(2)	(%)	.....	17
(3)		.....	19
(4)		.....	19
(5)	(20%) (%)	.....	21
(6)	( ) 5	.....	22
(7)	( )	.....	24
(8)	( 100 ) (	.....	27
(9)	1 (	.....	32
(10)	( )	.....	34
(11)	(	.....	38
(12)	( )	.....	38



• 18660  
 CE (2004  
 2005  
 )  
 (UNDP)  
 2003 -2005  
 IHLCA (PMIS)  
 IHLCA (4)  
 CE  
 (MNPED)  
 (PD) UNDP ®  
 IDEA International Institute  
 IHLCA  
 -  
 • 2003  
 (224)  
 )  
 ( )  
 •  
 2004  
 (4) <sup>13</sup>  
 14

---

13

---

14

IHLCA

---

MDG

IHLCA

MDG

(48)

(16)

(16)

MDG<sup>15</sup>

---

<sup>15</sup> HIV/AIDS



( )

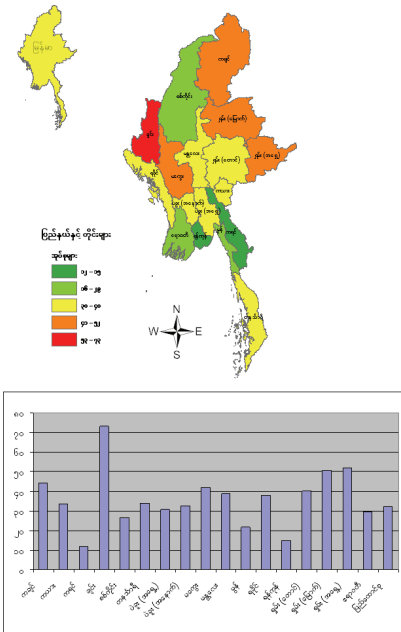
2%

( 1-1

1 )

(2)

(%)



32%

73%

( ) (52%)

( ) (51%)

(15%)

12%

(22%)

( 1-2 2 )

1-1

(%)<sup>16</sup>

	2016		2015		2014	
	(%)		(%)		(%)	
	2	1	0	1	2	1
	5	4	4	2	4	2
	4	2	8	11	5	3
( )	5	3	12	16	6	4
( )	7	5	5	5	7	5
	8	6	4	3	8	6
	10	7	9	15	10	7
	13	10	6	7	11	8
	12	8	9	14	11	9
	13	9	7	9	12	10
	17	14	5	4	13	11
( )	14	12	8	10	13	12
	14	11	7	8	13	13
	17	13	9	13	14	14
( )	23	16	8	12	20	15
( )	22	15	16	17	21	16
	49	17	5	6	40	17
	<b>11</b>		<b>6</b>		<b>10</b>	

1-2

(%)

	2016		2015		2014	
	(%)		(%)		(%)	
	12	1	8	1	12	1
	17	2	14	2	15	2
	21	3	23	5	22	3
	27	4	22	4	27	4
	30	6	24	8	29	5
( )	30	5	35	14	31	6
( )	34	7	23	6	33	7
	38	9	26	12	34	8
	37	8	21	3	34	9
	41	10	26	9	38	10
	45	13	24	7	39	11
( )	44	12	26	11	40	12
	44	11	26	10	42	13
	47	14	38	16	44	14
( )	55	15	35	13	51	15
( )	56	16	37	15	52	16
	81	17	46	17	73	17
	<b>36</b>		<b>22</b>		<b>32</b>	



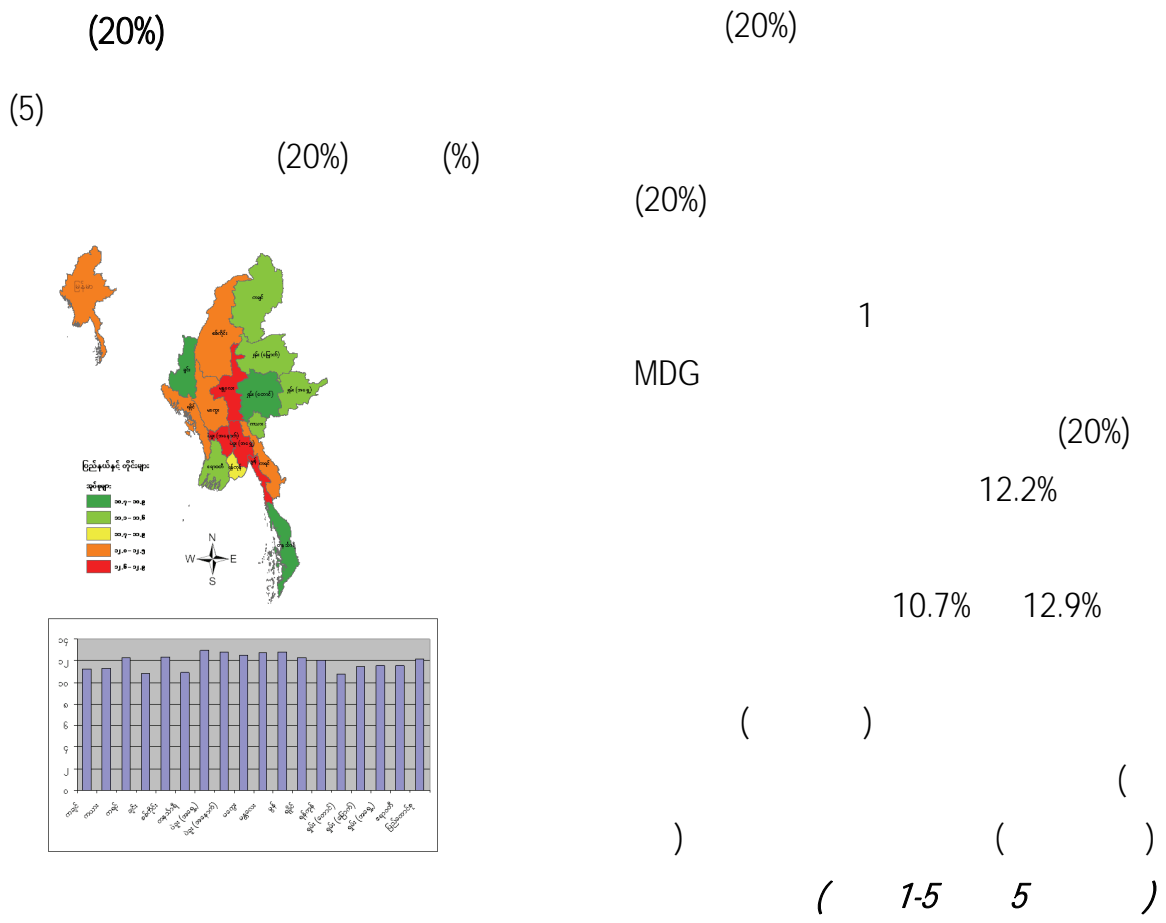
1-3

	0.02	1	0.01	1	0.02	1
	0.03	2	0.03	2	0.03	2
	0.03	3	0.05	8	0.04	3
	0.05	5	0.03	3	0.05	4
( )	0.05	4	0.07	16	0.05	5
( )	0.06	6	0.04	4	0.05	6
	0.06	7	0.05	11	0.06	7
	0.09	10	0.04	5	0.07	8
	0.08	9	0.05	6	0.07	9
	0.08	8	0.05	12	0.07	10
	0.09	11	0.05	7	0.07	11
( )	0.09	13	0.05	9	0.08	12
	0.09	12	0.05	10	0.08	13
	0.11	14	0.07	15	0.10	14
( )	0.13	15	0.06	13	0.12	15
( )	0.14	16	0.08	17	0.12	16
	0.27	17	0.06	14	0.23	17
	<b>0.07</b>		<b>0.04</b>		<b>0.07</b>	

1-4

	0.00	1	0.00	1	0.00	1
	0.01	3	0.01	3	0.01	2
	0.01	2	0.01	7	0.01	3
( )	0.01	4	0.02	16	0.01	4
( )	0.01	5	0.01	4	0.01	5
	0.01	6	0.01	2	0.01	6
	0.02	7	0.02	12	0.02	7
	0.02	8	0.01	6	0.02	8
	0.03	12	0.01	5	0.02	9
	0.02	10	0.01	9	0.02	10
	0.02	9	0.02	15	0.02	11
	0.03	11	0.01	11	0.02	12
( )	0.03	13	0.01	8	0.03	13
	0.04	14	0.02	14	0.03	14
( )	0.05	15	0.01	10	0.04	15
( )	0.05	16	0.03	17	0.04	16
	0.12	17	0.02	13	0.10	17
	<b>0.02</b>		<b>0.01</b>		<b>0.02</b>	

1-5	(20%)		(%)	
	(%)		(%)	
( )	13.0	4	12.5	1
	13.1	3	11.6	6
( )	12.9	5	12.3	2
	13.2	2	11.8	4
	12.6	6	11.4	7
	12.6	7	11.2	10
	12.4	9	11.9	3
	12.5	8	11.1	11
	13.2	1	11.8	5
( )	11.8	11	10.9	12
	11.7	13	10.8	13
( )	11.8	12	10.6	14
	12.4	10	10.0	17
	11.6	14	10.1	16
	10.7	16	11.3	8
	10.7	17	11.3	9
( )	10.8	15	10.6	15
	<b>12.4</b>		<b>11.6</b>	
				<b>12.2</b>







34%

32%

35%

38%  
32%

60%

36%

21%

24%

42%

( )  
( 1-6 ) 25%  
6

1-6

(E )

5

ق.س. (%) (

					/			
	20.5	22.3	13.6	25.6	35.5	6.5	21.0	1
( )	23.2	37.3	25.1	23.5	28.9	19.2	24.2	2
( )	26.0	22.9	26.5	23.8	33.0	19.1	25.3	3
( )	26.5	26.9	32.3	20.5	27.7	25.2	26.6	4
	30.9	25.9	36.3	24.9	23.1	32.0	27.1	5
	29.4	23.8	36.3	21.5	26.9	29.9	28.2	6
	32.0	16.9	31.8	27.3	30.9	27.1	28.9	7
	27.6	38.1	33.9	26.6	31.6	25.8	28.9	8
	29.6	32.2	8.0	32.7	29.5	30.4	30.0	9
	30.7	38.2	30.1	35.6	30.6	33.1	31.7	10
( )	31.4	34.2	36.4	29.4	28.5	35.1	31.8	11
	34.0	30.4	34.1	32.3	33.2	33.0	33.1	12
( )	36.1	23.4	34.7	33.8	36.0	32.9	34.2	13
	34.3	39.2	37.9	34.0	39.6	31.1	35.1	14
	36.0	37.9	40.1	34.2	33.7	39.0	36.2	15
	42.5	41.4	46.7	38.5	43.1	41.7	42.4	16
	58.5	80.2	59.7	61.1	63.8	56.4	60.5	17
	<b>35.1</b>	<b>31.5</b>	<b>38.0</b>	<b>32.2</b>	<b>34.5</b>	<b>34.2</b>	<b>34.4</b>	





2-2 15-24

(%) ( € )

					/			
	94.8	97.6	92.9	97.7	95.5	98.4	96.8	1
	96.4	98.3	95.3	97.3	96.3	97.0	96.7	2
	96.5	97.1	96.3	96.7	96.3	96.9	96.6	3
	95.6	97.5	95.1	96.9	95.0	97.3	96.1	4
	95.6	96.8	90.0	97.4	96.2	95.5	95.9	5
( )	95.1	97.3	92.2	97.2	95.0	95.7	95.4	6
	91.9	98.7	93.1	95.7	95.9	93.3	94.7	7
	92.9	98.2	91.1	96.9	95.8	92.6	94.2	8
	93.4	98.9	89.4	97.2	92.8	95.0	93.8	9
( )	91.9	93.4	90.6	92.9	91.2	93.1	92.1	10
	91.8	91.2	89.3	93.0	92.9	90.4	91.7	11
	90.9	94.8	92.4	91.3	94.2	88.6	91.5	12
	87.6	95.9	90.8	84.8	87.2	92.1	89.5	13
( )	79.6	94.2	76.6	87.9	83.6	82.1	82.8	14
( )	77.0	86.1	75.0	83.0	79.4	77.8	78.6	15
	66.7	85.8	60.8	76.7	68.4	72.8	70.6	16
( )	47.8	84.1	46.4	66.3	57.9	53.2	55.4	17
	<b>90.6</b>	<b>95.9</b>	<b>87.6</b>	<b>94.1</b>	<b>91.4</b>	<b>92.3</b>	<b>91.9</b>	



94 101  
 ( ) 100 MDG 4  
 85 ( 3-1 8 )  
 ) 103 ( 100 )

104 99

100  
 72 74  
 90 94  
 ( 3-2 )  
 3-1 ( 100 )  
 ( ㊦ )

	124.6	67.9	137.1	106.4	120.2 1
	111.7	95.3	103.7	111.6	108.9 2
	100.2	99.8	101.1	99.8	100.2 3
( )	99.2	97.1	102.8	96.9	99.1 4
	101.2	80.5	106.3	97.8	98.9 5
( )	96.7	105.0	92.2	105.7	98.3 6
	98.3	90.6	105.5	94.4	97.6 7
( )	98.5	92.8	99.7	94.3	97.3 8
	73.5	143.4	91.8	98.5	96.3 9
	102.7	76.7	123.8	76.5	96.1 10
	97.6	73.8	102.7	65.5	92.9 11
	97.1	89.9	113.8	87.6	92.4 12
	94.3	79.2	130.5	82.4	91.7 13
	91.3	89.4	89.4	92.0	91.0 14
( )	90.4	76.8	99.5	81.4	88.6 15
	88.9	86.3	81.7	93.4	88.3 16
( )	86.2	71.3	78.4	86.7	83.9 17
	<b>98.0</b>	<b>87.8</b>	<b>100.5</b>	<b>93.7</b>	<b>96.1</b>

3-2

( 100 ) ( € )

	135.6	146.6	146.0	135.8	138.1
( )	97.7	210.8	122.2	126.9	125.3
	122.4	112.9	70.2	125.9	120.9
( )	131.8	98.0	151.2	102.9	118.0
	113.5	126.9	92.7	122.9	116.4
( )	114.4	113.0	125.5	111.4	114.1
	111.9	109.9	118.2	107.0	111.2
	113.4	96.8	106.1	113.6	111.0
	101.8	127.1	128.2	65.7	108.7
( )	105.9	109.5	79.3	115.7	106.5
( )	116.8	69.4	114.9	98.0	103.1
	101.7	101.5	120.7	94.8	101.6
	96.8	111.9	123.3	97.0	100.2
	95.3	93.0	74.0	95.9	93.5
	88.2	100.0	68.0	98.8	90.0
	79.4	66.3	87.2	71.4	73.8
	71.5	71.9	95.2	65.4	71.7
	104.1	99.3	102.2	102.6	102.5

15-24

®

0

15-24

4

MDG

®

4

MDG

15-24

€

100 )

98 (

€

41 %

€ 40%

€

(98 99 )

€

(

( )

( )

)  
100

( )

53% 51%)

(58%

( 3-3

)





3-4

®

15

0 (%) ( € )

( )	70.8	53.5	58.4	1
( )	55.1	47.9	52.8	2
( )	53.1	50.2	51.4	3
	52.4	50.2	50.9	4
	50.7	45.6	48.1	5
	46.3	51.0	47.9	6
	43.0	47.6	44.5	7
	45.6	41.6	44.3	8
( )	46.3	40.2	42.7	9
( )	31.9	53.7	42.3	10
	48.7	32.0	42.3	11
	27.4	58.5	41.3	12
	42.5	37.3	39.7	13
	40.9	38.2	38.6	14
	37.2	39.5	37.8	15
	30.2	42.3	37.5	16
	28.9	42.1	31.3	17
	<b>42.3</b>	<b>40.5</b>	<b>41.3</b>	

3-5

®

15

0 (%) ( € )

( )	51.0	50.7	50.8	1
( )	48.4	46.3	47.1	2
( )	45.9	47.3	46.3	3
	46.7	34.4	42.4	4
	40.7	45.4	42.4	5
	34.0	47.8	42.3	6
	46.5	38.2	42.2	7
( )	33.5	53.2	42.2	8
	38.3	48.8	41.9	9
( )	48.1	37.2	41.6	10
	43.2	39.4	41.2	11
	40.9	41.3	41.0	12
	41.9	37.2	37.9	13
	33.2	39.3	35.0	14
	16.5	53.1	33.9	15
	23.7	38.2	32.8	16
	25.7	45.8	29.6	17
	<b>39.8</b>	<b>39.6</b>	<b>39.7</b>	

4

4

5

MDG

1

3

( )

1

4-1

5 1990

2015

5

( )

90%

€

80%

•

1

( )

60%

1

63%

67%

(9)

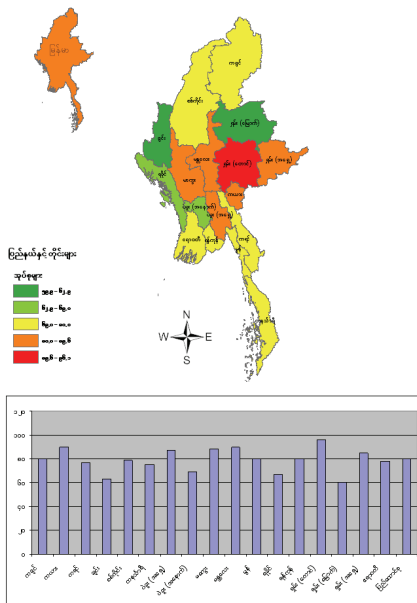
1

( € )

78%

81%

( 4-1 9 )



4-1	1		(%)( € )			
( )	95.8	100.0	96.9	95.2	96.1	1
	92.5	81.8	100.0	80.7	89.6	2
	90.7	86.0	83.2	95.5	89.6	3
	87.7	84.6	86.4	88.6	87.5	4
( )	90.9	54.0	85.5	88.8	87.4	5
( )	88.3	67.9	89.6	81.5	84.6	6
	86.4	78.6	71.2	81.5	80.0	7
	83.1	66.9	65.4	89.6	79.8	8
	77.8	89.5	75.0	81.1	79.5	9
	78.9	78.7	76.0	79.9	78.8	10
	78.1	80.8	80.3	77.3	78.4	11
	76.1	81.8	100.0	74.9	76.6	12
	75.8	72.9	72.5	76.8	75.2	13
( )	67.9	81.3	79.2	59.4	69.0	14
	62.5	87.7	62.1	70.1	66.8	15
	57.0	87.9	57.0	80.7	62.9	16
( )	58.3	66.9	59.4	60.4	59.9	17
	<b>80.4</b>	<b>79.7</b>	<b>78.4</b>	<b>81.4</b>	<b>80.3</b>	

5

5

( 1 ) 2

MDG

6<sup>23</sup>

5-1

6 1990

2015

CE

( )<sup>24</sup>

•

73%

(89%)

(68%)

(77%)

(10)

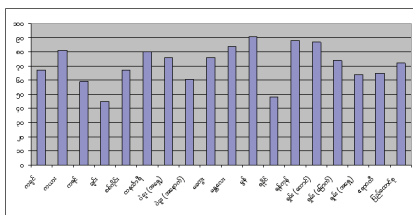
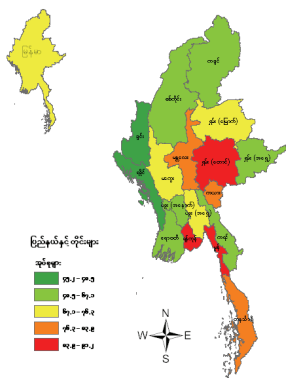
(65%)

( CE )

(45%)

(49%)

( 5-1 )



23

MDG  
CE

24

5-1

( 5

%( € )

	90.1	96.4	93.8	90.2	91.2	1
	73.1	92.3	73.0	91.1	87.5	2
( )	85.8	92.0	79.9	91.7	86.8	3
	81.9	89.6	78.4	88.0	83.9	4
	72.3	100.0	82.7	79.6	80.8	5
	77.6	87.2	80.0	79.6	79.7	6
	75.3	89.0	72.3	79.8	76.3	7
( )	74.6	85.5	68.5	80.2	76.2	8
( )	69.8	96.5	64.1	83.3	73.9	9
	65.6	79.1	61.9	69.2	67.1	10
	63.4	79.4	58.4	75.4	66.6	11
	61.4	88.4	55.9	69.6	64.8	12
( )	60.2	80.0	52.7	77.7	63.9	13
( )	58.0	93.5	57.4	62.7	60.6	14
	55.2	80.4	41.7	61.0	58.8	15
	44.2	73.0	36.8	56.1	48.5	16
	41.2	61.6	42.0	52.1	45.2	17
	<b>67.9</b>	<b>88.6</b>	<b>64.6</b>	<b>76.9</b>	<b>72.5</b>	



6-1

(%) ( CE )

	87.7	63.3	83.9	66.6	69.2	1
( )	89.5	56.7	77.2	87.4	84.3	2
	97.8	81.0	97.3	88.4	91.4	3
	93.3	90.7	93.9	92.4	92.9	4
( )	95.5	81.4	95.1	93.3	93.9	5
( )	97.3	82.8	95.7	92.3	94.0	6
	96.4	87.5	96.3	95.0	95.6	7
	95.4	99.6	97.0	95.9	96.3	8
	99.2	92.0	99.1	96.0	97.2	9
	97.5	97.1	96.7	97.7	97.4	10
	98.7	89.9	100.0	97.1	97.5	11
	97.8	96.0	95.8	98.0	97.5	12
( )	99.1	92.4	98.4	97.0	97.6	13
	98.9	97.0	98.3	98.4	98.3	14
	98.9	98.0	98.2	98.9	98.7	15
	99.1	99.3	100.0	96.8	99.1	16
( )	99.5	97.7	99.7	98.6	99.1	17
	<b>96.0</b>	<b>81.6</b>	<b>95.2</b>	<b>90.5</b>	<b>92.3</b>	





MDG 10 59% 71%  
 60%  
 76% 64% 36% 53% ( )  
 ) 56% ( 6-3  
 )  
 67%

6-2 27  
 ( CE )

SD and					
	83.5	97.0	87.7	89.0	88.5 1
	84.7	94.7	79.1	88.6	86.6 2
	63.8	97.4	93.5	84.6	86.1 3
	79.0	97.2	78.8	88.0	83.9 4
	74.9	84.7	72.8	88.9	77.0 5
( )	71.5	94.9	67.5	85.8	75.8 6
	68.7	96.3	66.6	81.4	75.5 7
( )	69.3	94.3	68.2	80.9	74.4 8
( )	69.2	93.7	73.4	73.0	73.1 9
	57.8	74.5	58.5	60.5	59.9 10
	53.7	94.1	52.1	60.4	56.8 11
( )	53.4	82.7	57.7	54.9	55.8 12
	53.1	70.7	40.7	57.5	55.4 13
	49.2	79.4	52.8	53.9	53.5 14
( )	46.3	78.4	40.8	61.4	52.8 15
	33.9	71.7	42.6	40.6	41.4 16
	30.1	76.4	43.1	32.8	36.1 17
	<b>55.3</b>	<b>89.6</b>	<b>59.4</b>	<b>64.2</b>	<b>62.6</b>

27 1 (30 )

) CE ( ) ( )

6-3

28 (%)

( ㊦ )

	82.1	75.2	75.1	84.1	80.1	1
	78.7	79.6	73.4	81.9	79.0	2
	77.5	85.4	72.1	80.9	79.0	3
	74.4	76.8	59.0	79.2	76.2	4
	73.8	79.3	69.8	76.8	74.8	5
( )	70.4	81.8	73.1	71.9	72.3	6
	71.8	74.9	69.7	73.1	72.2	7
	71.5	73.1	66.7	75.3	72.0	8
( )	67.1	72.6	63.2	71.9	68.4	9
	63.5	76.3	64.3	72.0	66.3	10
	63.8	79.3	49.4	68.2	65.9	11
( )	55.8	74.8	55.7	64.3	59.9	12
( )	50.2	83.3	42.3	74.0	57.6	13
	53.9	75.2	43.2	65.2	56.0	14
( )	52.5	79.7	43.8	61.3	55.6	15
	49.8	67.1	36.3	62.1	53.4	16
	29.3	61.4	31.2	38.6	35.8	17
	<b>64.4</b>	<b>75.6</b>	<b>58.7</b>	<b>71.4</b>	<b>67.3</b>	

6-3

11 2020

100

( )

99%

11

MDG

(90% 95%)

( 6-4 )

6-4

(%) ( CE )

	100.0	100.0	100.0	100.0	100.0 1
( )	100.0	100.0	100.0	100.0	100.0 1
	100.0	99.6	99.8	100.0	99.9 3
	99.9	99.1	98.9	99.9	99.8 4
	100.0	99.2	100.0	99.7	99.8 5
	99.8	99.0	99.8	99.7	99.7 6
( )	99.8	99.1	99.3	99.8	99.7 7
( )	99.7	99.6	99.5	99.8	99.7 8
( )	99.4	100.0	99.7	99.5	99.6 9
( )	99.6	99.5	99.6	99.5	99.6 10
	99.3	99.7	99.4	99.3	99.4 11
	99.2	99.7	99.1	99.4	99.3 12
	99.5	98.7	99.2	99.3	99.3 13
	99.5	97.8	99.2	99.2	99.2 14
	99.6	97.6	99.3	99.2	99.2 15
	99.3	98.9	98.7	99.1	99.0 16
	98.1	89.5	99.3	95.2	96.3 17
	<b>99.5</b>	<b>98.8</b>	<b>99.4</b>	<b>99.3</b>	<b>99.3</b>

---

7

8

( 7 16 )  
16 1 (45 )

3% 10%

• 15-24

CE

7-1

16

10%

CE

CE

5%

7-2

)

( 7-1

15-24

15-24

16

MDG

CE

6

29

15-24

4%

CE

---

29

7-1	6		15-24				(%)	
( )	( ¥ )				/			
	0.0	0.0	0.0	0.0	0.0	0.0	0.0	1
( )	0.2	10.5	0.9	2.9	1.7	2.3	2.0	2
	1.3	5.3	2.5	1.7	2.4	1.8	2.1	3
	2.0	4.4	2.6	2.1	1.9	2.8	2.3	4
( )	1.5	7.3	3.1	1.2	2.6	1.9	2.3	5
	1.8	10.7	3.5	1.3	3.3	1.4	2.3	6
	2.4	2.5	2.9	1.9	3.2	1.1	2.4	7
	1.7	9.3	2.4	2.6	2.6	2.4	2.5	8
( )	1.0	11.3	1.1	5.4	1.9	4.1	2.9	9
( )	2.6	9.3	3.8	2.7	2.8	3.7	3.2	10
( )	3.0	7.2	2.4	4.0	2.7	4.3	3.4	11
	3.4	8.5	4.9	4.0	2.7	6.9	4.3	12
	3.5	10.2	0.0	5.2	6.1	1.6	4.4	13
	5.8	14.3	13.1	5.4	5.6	9.3	7.1	14
	8.2	16.7	10.6	6.2	4.4	13.8	9.6	15
	2.5	13.7	10.4	9.6	8.2	11.9	9.8	16
	9.9	17.1	10.6	12.1	10.7	12.9	11.5	17
	<b>2.7</b>	<b>10.4</b>	<b>3.9</b>	<b>4.1</b>	<b>3.9</b>	<b>4.2</b>	<b>4.1</b>	

7-2	6		15-24				(%)	
( )	( ¥ )				/			
	0.0	0.0	0.0	0.0	0.0	0.0	0.0	1
	1.0	3.6	1.9	0.5	0.9	1.4	1.2	2
	1.0	7.8	0.0	2.2	2.8	0.6	2.0	3
( )	0.6	8.9	1.1	2.8	0.8	3.3	2.0	4
	1.5	4.5	1.9	2.3	2.1	2.0	2.1	5
	2.0	2.8	1.8	2.2	1.8	2.4	2.1	6
( )	1.8	5.5	2.9	1.3	2.4	2.1	2.3	7
( )	1.8	8.7	2.5	2.4	2.8	1.8	2.4	8
	2.3	3.9	3.6	1.9	2.5	2.4	2.5	9
	1.4	7.1	1.6	3.2	2.4	2.9	2.6	10
( )	1.7	8.9	0.9	5.8	2.0	4.3	2.9	11
	3.4	0.9	3.5	2.5	2.7	3.4	3.0	12
( )	3.4	12.3	5.1	4.2	4.0	5.2	4.5	13
	4.1	12.6	6.3	2.2	5.0	5.9	5.5	14
	6.5	6.2	7.0	6.3	5.7	7.7	6.5	15
	1.4	14.3	11.1	9.9	8.0	12.8	10.2	16
	9.8	16.5	11.8	10.8	11.0	11.6	11.2	17
	<b>2.5</b>	<b>9.5</b>	<b>3.6</b>	<b>4.0</b>	<b>3.7</b>	<b>4.1</b>	<b>3.8</b>	

---

**Asian Development Bank (2005), Key Indicators 2005: Labor Markets in Asia: Promoting Full, Productive, and decent employment, Asian Development Bank.**

**United Nations (2003), Indicators for monitoring Millennium Development Goals: Definitions, Rationale, Concepts and Sources, United Nations Population Fund (UNFPA), United Nations Development Programme (UNDP), Department of Economics and Social Affairs Statistics Division, New-York.**

1	
1 1990 2015	1 (PPP) 2 ( x 3 ) (20%)
2 1990 2015	4 5 5
2	
3 2015	6 7 1( ) 5( ) 8 15-24
3	
4 2005  2015	9 10 15-24 11 ® 12
4	
5 1990 2015  5	13 5 14 1 15 1
5	
6 1990 2015	16 17
6 HIV/AIDS	
7 2015 HIV/AIDS	18 15-24 HIV 19 20 HIV/AIDS
8 2015	21 22  23 24 (DOTS)



<b>7</b>	
9	25 26 27 GDP(PPP) ( ) 28 CFCs(ODP ) 29
10 2015	30 31
11 2020 100	32 ( )
<b>8</b>	
12 CE ® 13 (LDCs) 14 15 -	33 OECD/ DAC 34 ODA ® ODA OECD/ DAC ( ) 35 OECD/ DAC CE ODA 36 ODA 37 ODA 38 ( ) LDC 39 40 OECD GDP ® 41 ODA 42 HIPC 43 HIPC ( ) - 44 -

16	45 15-24
17	46
18 ®	47 100 48 100 100

2000

CE 147

189

[www.un.org/documents/ga/res/55/a55r002.pdf](http://www.un.org/documents/ga/res/55/a55r002.pdf) - A/RES/55/2)

HIV

١٥

15 24

HIV/ AIDS

(UNICEF-

WHO)

10-14

5

5

2-1

30

31

		30			31		
		30 31					
		30 31					
		30 31					
		30 31					
	1999	40.1	18.2	35.9			
	2002	21.1	14.5	18.2			
	1997	41.0	26.9	38.6			
	1999	12.4	3.4	7.5			
	2003	-	-	30.4			
	2002	12.6	4.0	9.8			
	2002	35.6	6.6	28.9			
	2000	53.0	36.6	49.8			
	2000	-	-	25.3			
	2000	30.2	24.7	28.6			
	1998	50.0	20.0	43.0			
	2004	34.6	9.6	30.9			
	1999	34.8	25.9	32.6			
	1996	27.0	15.0	25.0			

- 2005

2-2

32

	30		31	
	1	(%)	1	(%)
	77		14	
	65		32	
*	80		73	
	42		19	
	94		99	
	93		85	

- WHO - 2005

\* - IHLCA, 2004-2005

30

31

PPP

2-1

32

1	75	48
1	34	16
*	63	67
1	43	24
1	85	99
1	73	41

- 2005 <http://unstats.un.org/unsd/mi/mi.asp>

\* - IHLCA, 2004-2005

<sup>1</sup> 2002

		( 100 )
1	87	102
1	86	89
*	85	96
1	83	86
1	86	96
1	94	93

- 2005 <http://unstats.un.org/unsd/mi/mi.asp>

\* - IHLCA, 2004-2005

<sup>1</sup> 2001

---

## A

Adult equivalent

Antenatal care

## C

Child mortality Rate (1-4)

## E

Economically active person /

## F

Female-headed household

FocusGroup Discussion (FGD)

Food consumption expenditure

Food poverty headcount index

## G

Gender disparity

Gender equality

Gross enrolment rate

## I

Illiteracy rate

Infant mortality Rate (IMR)

Integrated Household Living Conditions Assessment (IHLCA)

Intensity of Poverty

## M

Management Information System (MS)

Maternal Mortality Rate (MMR)

Millennium Development Goal (MDG)

Morbidity incidence

---

## N

Net enrolment rate

Non food expenditure

## P

Per adult equivalent

Poverty gap index

Poverty headcount index

Poverty line

PPP (Purchasing Power Parity)

Prevalence of moderately under weight children under 5

5

0.5%

Prevalence of severely underweight children under 5

5

0.5%

Proportion of births attendance by skilled health personal

## Q

Quintile

(20 %)

## S

Safe drinking water

Sanitation

( )

Secure tenure

Solid fuel

Squared poverty gap index

## T

Traditional Birth Attendant (TBA)

## W

Weight for age indicator

Weight for height indicator