



CountryOpinionSurveys

FY 2024 **Benin**

Country Opinion Survey Report

Acknowledgements

The Benin Country Opinion Survey is part of the Country Opinion Survey Program series of the World Bank Group. This report was prepared by the Business Intelligence (BI) team, led by José De Buerba (Senior External Affairs Officer) and Svetlana Markova (Senior External Affairs Officer). Yulia Danilina, Jessica Cameron, Nan Lin, and Sofya Gubaydullina oversaw the design, reporting, and analysis of the survey results. Noreen Wambui and Irina Popova provided data support.

BI acknowledges the significant contribution from the Benin country team and independent field agency, Centre de Formation et de Recherche en matière de Population (CEFORP). In particular, BI is grateful for the support from Yao Gnona Afangbedji (External Affairs Officer) and Mynah Nassila (Operations Analyst) who coordinated the survey-related activities from Cotonou, Benin.



Contents

Objectives

Methodology Overview

Overall Context

Overall Attitudes Toward the World Bank Group

World Bank Group's Support for Development Areas

World Bank Group's Engagement on the Ground in Benin

World Bank Group's Financial Instruments and Knowledge Work

The Future Role of the World Bank Group in Benin

Communication and Outreach

Sample Demographics and Detailed Methodology



Objectives

This survey was designed to assist the World Bank Group (WBG) in gaining a better understanding of how stakeholders in Benin perceive the WBG. The survey explored the following questions:

- 1. Overall Context:** How familiar are stakeholders with the WBG? How much do they trust the WBG?
- 2. Key Indicators:** What opinions do key stakeholders have of the WBG regarding its effectiveness, relevance, alignment with Benin's development priorities, and other key indicators? Are opinions improving or declining?
- 3. Development Priorities:** What areas of development are perceived to be the most important? Have the priorities changed over the past three years? How effective is the WBG perceived to be in these areas?
- 4. Engagement on the Ground:** How is the WBG perceived as a development partner in Benin? Are opinions improving or declining?
- 5. Financial Instruments and Knowledge Work:** What do key stakeholders value the most regarding the WBG's work in Benin? What opinion do key stakeholders have of WBG financial instruments and knowledge products? Are opinions improving or declining? What are stakeholders' suggestions for improving WBG's effectiveness?
- 6. Communication and Outreach:** What are the preferred communication channels? Are there differences among stakeholder groups in terms of preferred channels?
- 7. Message Recall:** What key topics do stakeholders recall when the WBG communicates? Is there a relationship between message recall and views of the WBG's work?



Methodology Overview

■ Fielded May – June 2024

- 651 potential participants were asked to complete a mostly quantitative survey
- Respondents received the questionnaire via courier or mail and returned it accordingly or completed the questionnaire online
- List of names provided by the WBG country team and supplemented by the field agency
- Process managed on the ground by the field agency

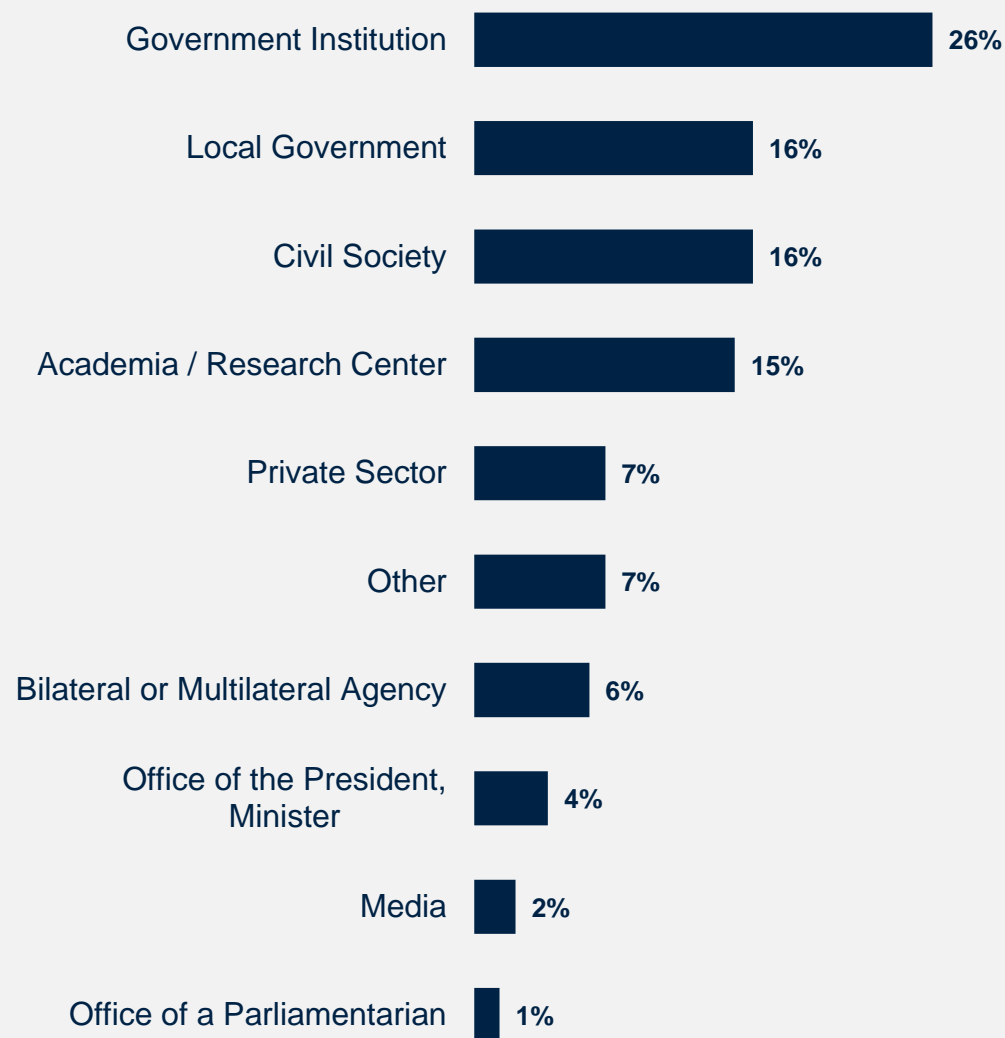
■ 220 participants (34% response rate)

- 53% from Cotonou, 28% from Other cities
- 43% currently collaborate with the WBG

■ Compared to FY21 Country Survey

- 464 participants (71% response rate)
- 33% from Cotonou, 42% from Other cities
- 30% collaborated with the WBG

Click [here](#) for details of the Respondent Sample and Methodology.



What is your primary professional affiliation? (Select only 1 response)
(Percentage of Respondents, N=219)

Overall Context

“Improve Africa's competitiveness by strengthening agricultural productivity, services and value chains. Africa's competitiveness is stagnating despite vigorous economic growth, and low productivity gains do not augur well for inclusive and sustainable growth.”

(Government Institution Respondent)

“Continue to support Benin in its clear vision of sustainable development and shared prosperity. Always strive for well-being and social cohesion.”

(Local Government Respondent)



WORLD BANK GROUP



In your opinion, what is the most important thing the WBG could do to increase its effectiveness in Benin? (N=120)

Familiarity with the World Bank Group

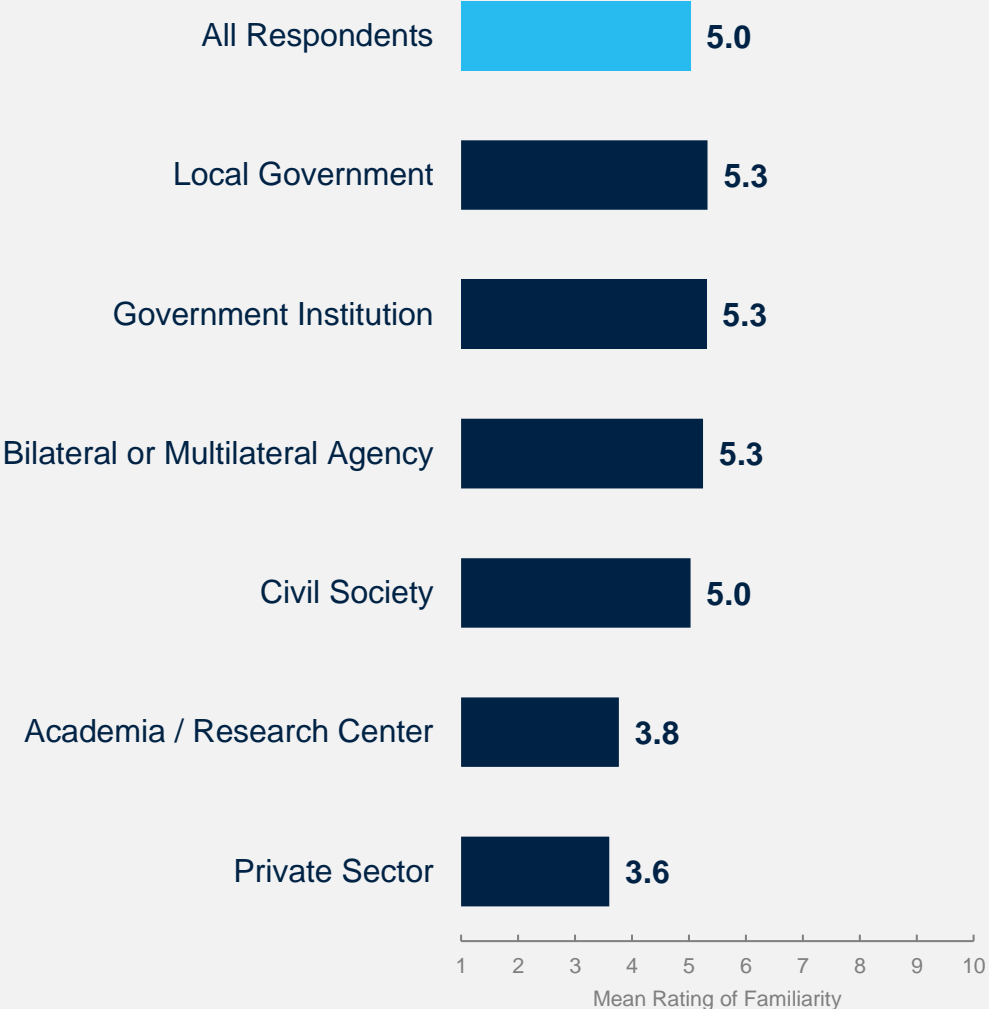
- Comparison of FY21 and FY24:** Respondents in this year’s Country Survey reported significantly lower levels of familiarity with the World Bank Group compared to respondents in the FY21 Survey:

Mean familiarity: **FY24 = 5.0**
 FY21 = 7.0

- Collaboration with the WBG:** Respondents who indicated that they collaborate with the WBG reported significantly higher levels of familiarity with the institution’s work:

Mean familiarity: **Collaborate with WBG = 6.7**
 Do not collaborate = 3.8

- Stakeholder Groups:** Although respondents from academia and the private sector reported much lower levels of familiarity with the WBG’s work than other stakeholder groups, this difference did not reach statistical significance.



Stakeholders Most Familiar with the WBG

- Respondents in this year’s Country Survey were asked to indicate their familiarity with the work of several international organizations, in addition to the World Bank Group. Of these organizations, respondents in Benin indicated the highest levels of familiarity with the work of the WBG, followed by the United Nations and the European Union.
- Indeed, respondents rated themselves as significantly more familiar with the WBG than the UN or EU.

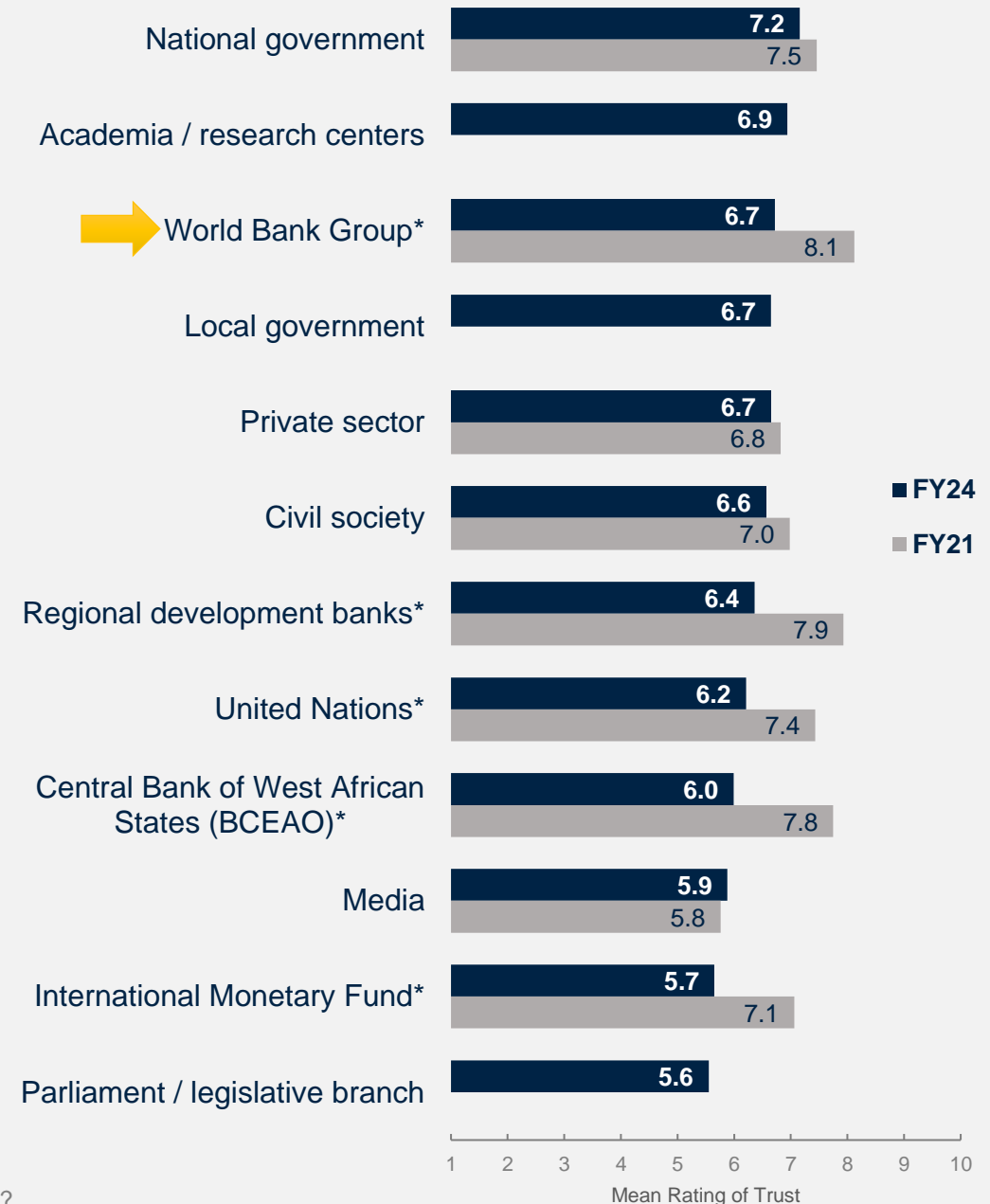


The WBG is among the Most Trusted Institutions

Respondents in Benin rated the **national government**, **academia**, the **WBG**, **local government**, and the **private sector** as the most trustworthy institutions.

Of note, **all multi-national organizations**, including the **WBG**, **regional development banks**, the **UN**, and the **IMF**, received significantly lower trust ratings in FY24 than in FY21.

Respondents from the **private sector** had significantly lower ratings of trust in the WBG (mean = 4.5) compared to respondents from all other stakeholder groups.



Overall Attitudes toward the World Bank Group

“Align with national priorities and strengthen collaboration with communes and municipalities.”
(Bilateral / Multilateral Agency Respondent)

“Support the government's development policy in priority sectors. Grant debt at preferential rates. Give importance to social, environmental and economic aspects.”
(Government Principal Respondent)

“The WBG needs to be better adapted to the real needs of grassroots populations.”
(Media Respondent)



WORLD BANK GROUP

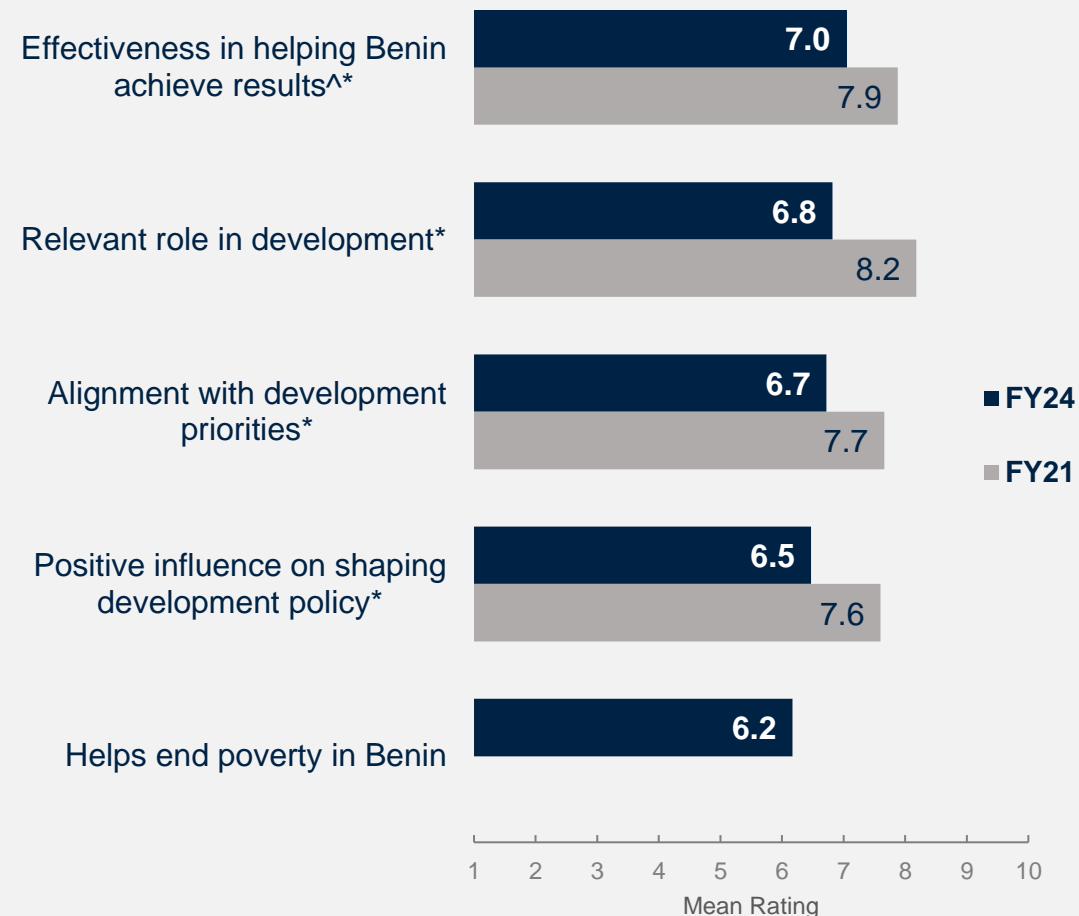


In your opinion, what is the most important thing the WBG could do to increase its effectiveness in Benin? (N=120)

Key Performance Indicators Have Decreased since FY21

In FY24, respondents gave the highest ratings for the **WBG's effectiveness in helping Benin achieve development results**; however, these ratings have declined significantly since the FY21 survey.

Stakeholder ratings for the WBG's **relevance** to development in Benin, its **positive influence** on shaping development policy, and its **alignment** with the country's development priorities also significantly decreased compared to the previous survey.



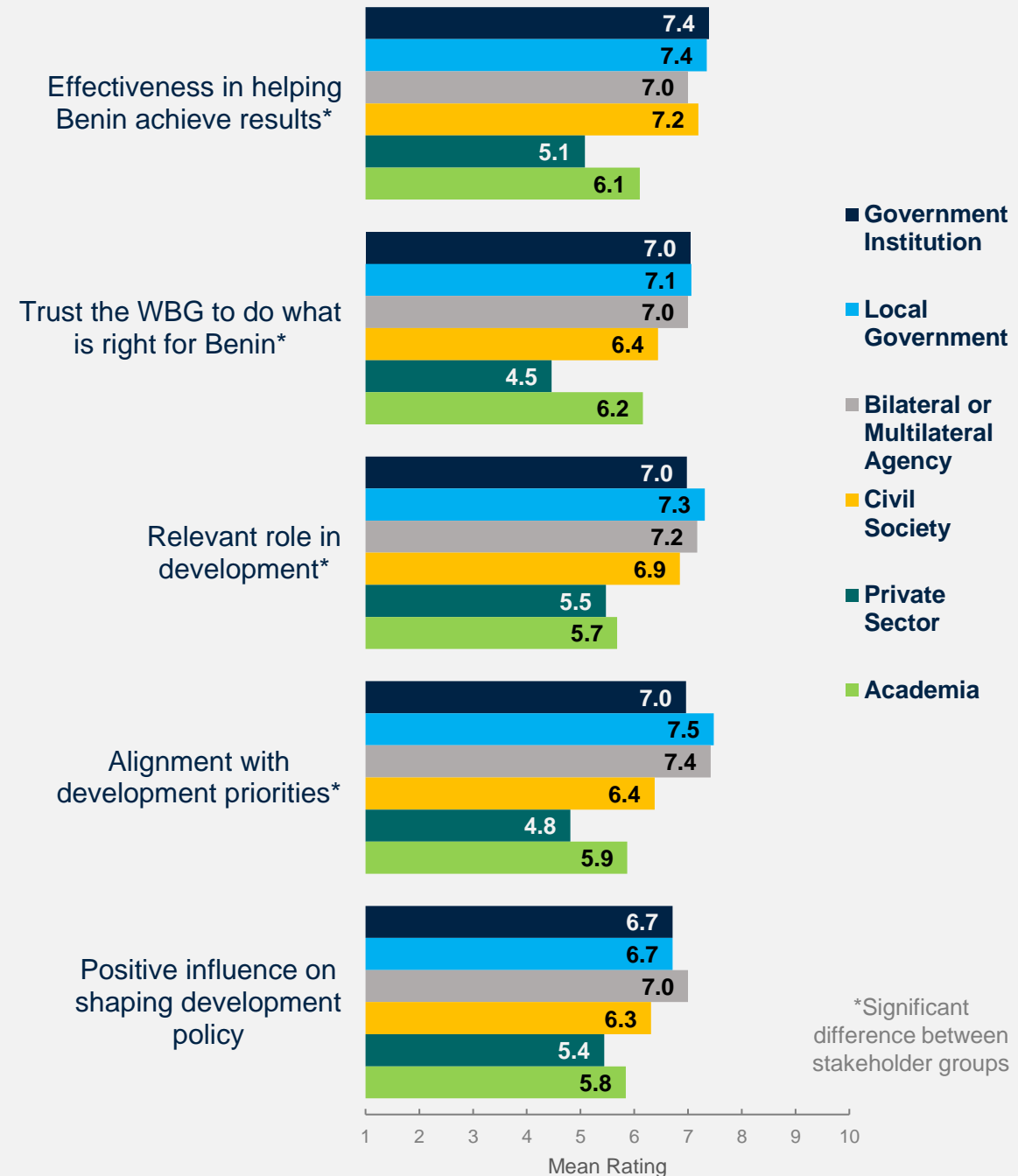
How effective is the WBG in helping Benin achieve development results? Scale: 1 Not effective at all – 10 Very effective
 The WBG currently plays a relevant role in development in Benin. Scale: 1 Strongly disagree – 10 Strongly agree
 The WBG's work is aligned with what I consider the development priorities for Benin. Scale: 1 Strongly disagree – 10 Strongly agree
 The WBG has a positive influence on shaping the development policy in Benin. Scale: 1 Strongly disagree – 10 Strongly agree
 The WBG's work helps end poverty in Benin. Scale: 1 Strongly disagree – 10 Strongly agree
[^]Compared to a mean score of the two questions asked in FY21: "Overall, please rate your impression of the WBG's effectiveness in Benin."
 Scale: 1 Not effective at all – 10 Very effective; "To what extent does the WBG's work help to achieve development results in Benin?"
 Scale: 1 To no degree at all – 10 To a very significant degree

*Significant difference between years

Stakeholders from Private Sector and Academia Had Less Positive Perceptions of the WBG

Comparisons of ratings for key performance indicators between stakeholder groups show that respondents from **government institutions**, **local government**, and **bilateral or multilateral agencies** have the highest ratings for the WBG's work across all KPIs. Respondents from **civil society** were also quite positive.

In contrast, respondents from the **private sector** and **academia** were more critical of the WBG's work. Respondents from these two stakeholder groups also indicated the lowest levels of familiarity with the WBG.

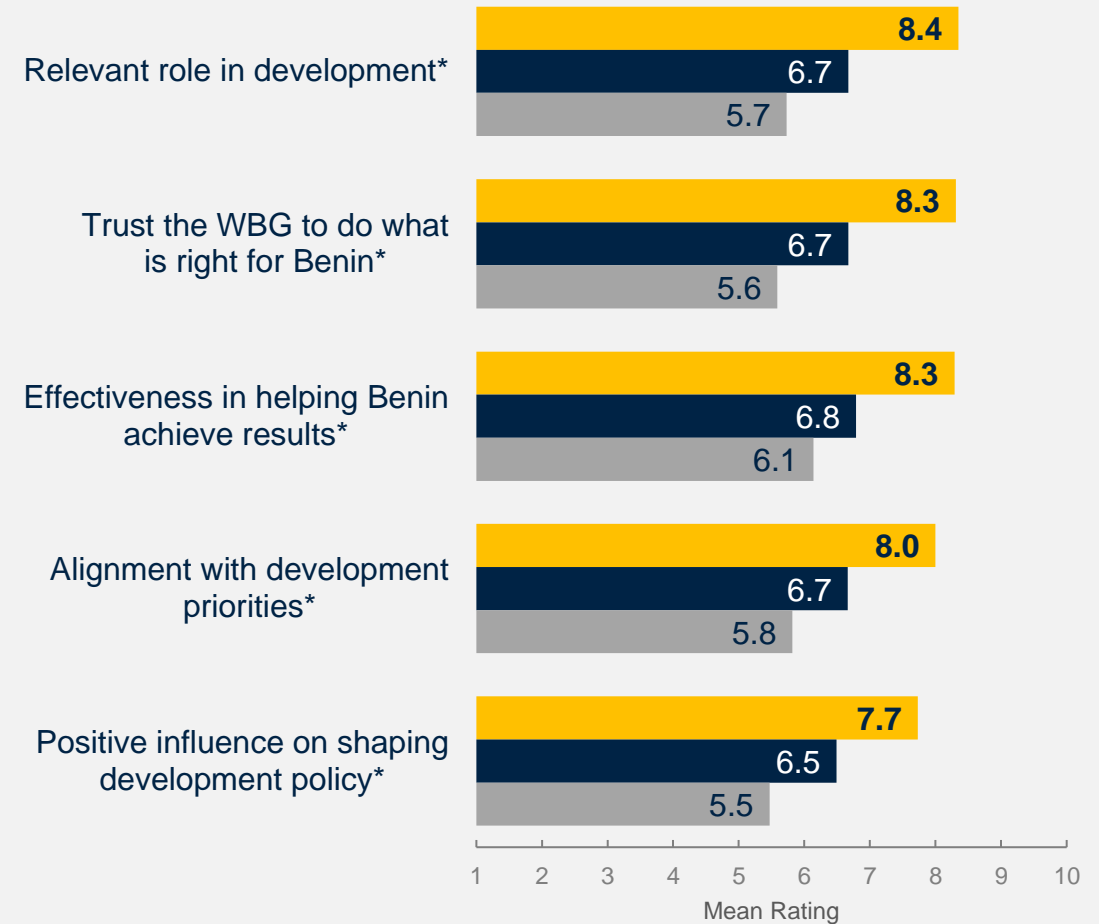


For question wording and scales, please see the previous slide.

Familiarity Leads to More Positive Perceptions

Comparing ratings of key performance indicators among respondents highly familiar with the WBG (ratings of 8-10 on a 10-point scale) and those with little familiarity with the WBG (ratings of 1-4 on a 10-point scale), one can see that the more familiar stakeholders are with the WBG, the more positive their perceptions of it and its work are.

Meaningful engagement and outreach can continue to increase positive perceptions.



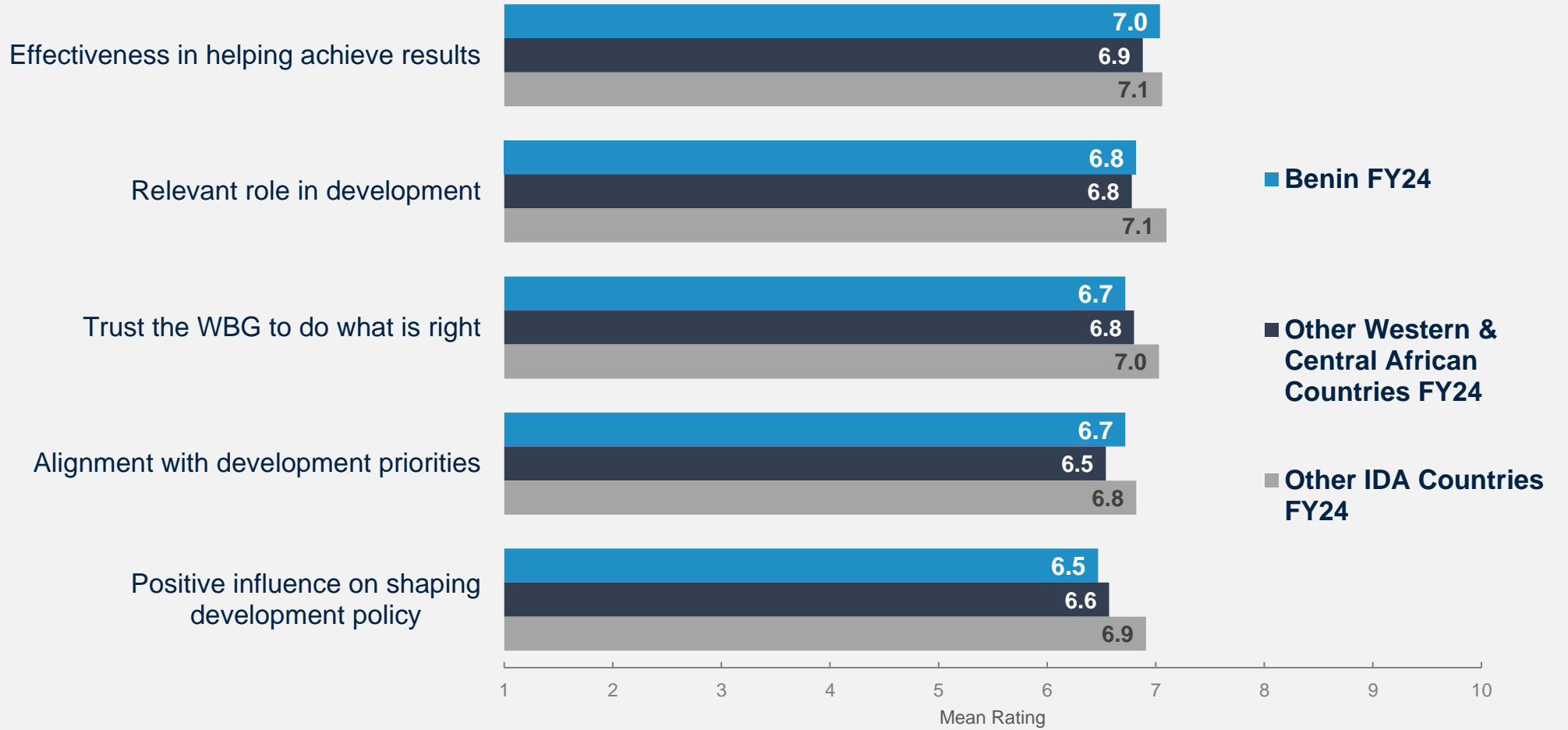
How familiar are you with the work of the WBG in Benin?

■ High Familiarity (8-10) ■ Some Familiarity (5-7) ■ Low Familiarity (1-4)

*Significant difference between levels of familiarity



Benin's Key Performance Indicators are On Par with Other FY24 Western & Central African Countries



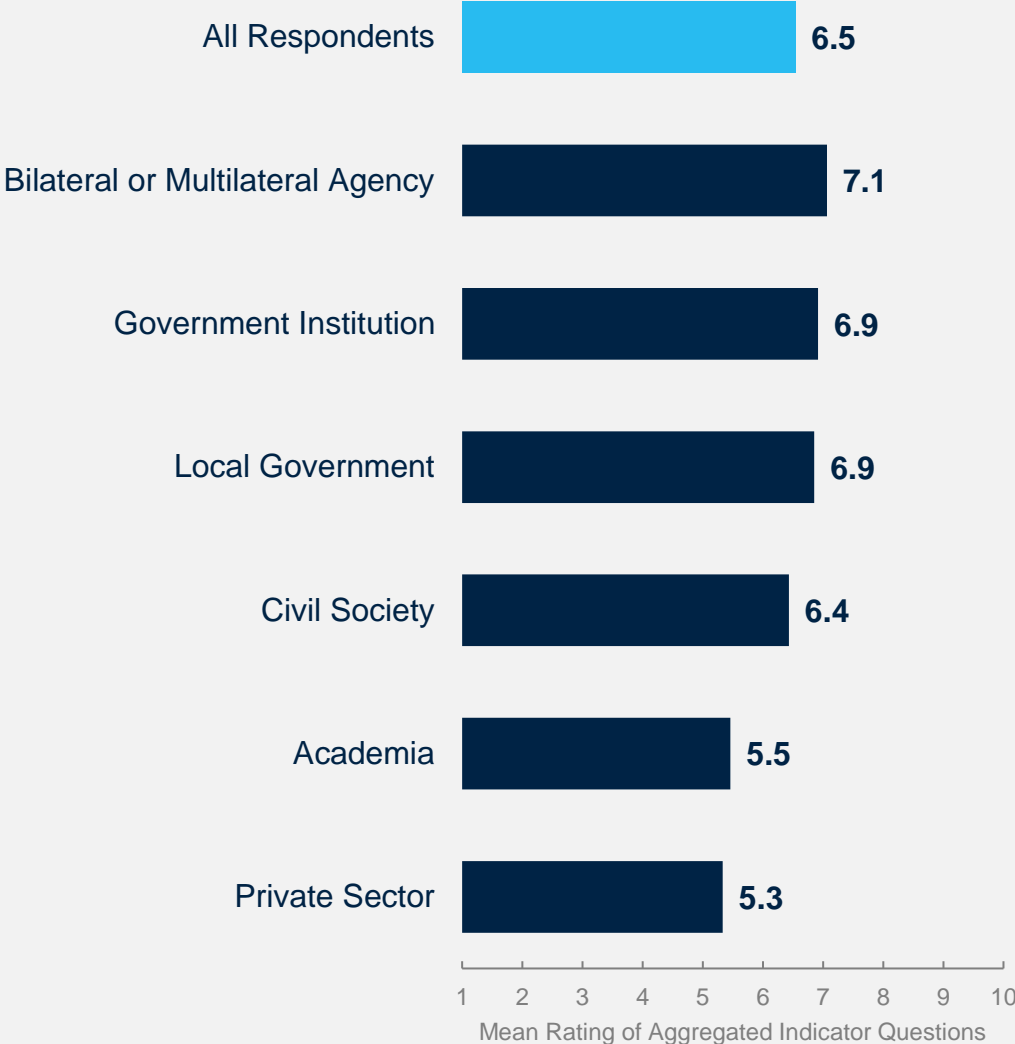
Other Western & Central African FY24 countries included: Burkina Faso, Chad, Equatorial Guinea, Guinea-Bissau, Mauritania, Nigeria, Senegal, and Togo.
 Other IDA FY24 countries included Bhutan, Burkina Faso, Burundi, Cambodia, Chad, Comoros, Guinea-Bissau, Lao PDR, Lesotho, Maldives, Mauritania, Senegal, Solomon Islands, Somalia, South Sudan, Sri Lanka, Togo, and Zambia.

Stakeholder Trends Across Performance Indicators

Respondents from **academia** and **private sector** had significantly lower mean ratings across the aggregated responses to the nineteen COS indicator questions compared to respondents from other stakeholder groups.

Collaboration with the WBG: Respondents who indicated that they collaborate with the WBG gave significantly higher ratings across the aggregated indicator questions compared to respondents who did not collaborate with the WBG:

Mean rating: **Collaborate with WBG = 7.2**
 Do not collaborate = 6.1



World Bank Group's Support for Development Areas

“The WBG should step up its support for the private sector as a creator of wealth and employment, for the achievement of the Sustainable Development Goals (SDGs), in general, and, in particular, for access to basic social services (water, education, energy, etc.). Support for agriculture and human capital development is also important.” (Media Respondent)

“Adapt 100% of its support to the country's context. The country's governance. Invest in youth employment, especially in agriculture and food security.” (Civil Society Respondent)



WORLD BANK GROUP



In your opinion, what is the most important thing the WBG could do to increase its effectiveness in Benin? (N=120)

WBG: Focal Development Areas

In FY24, nearly three-quarters of stakeholders wanted the WBG to focus its resources on **agriculture/food security**. **Education**, **water/sanitation**, **energy**, and **jobs** were top priorities.

Of note, respondents in this year's survey considered **energy** and **water/sanitation** much greater priorities than in the FY21 survey (15% and 12%, respectively).

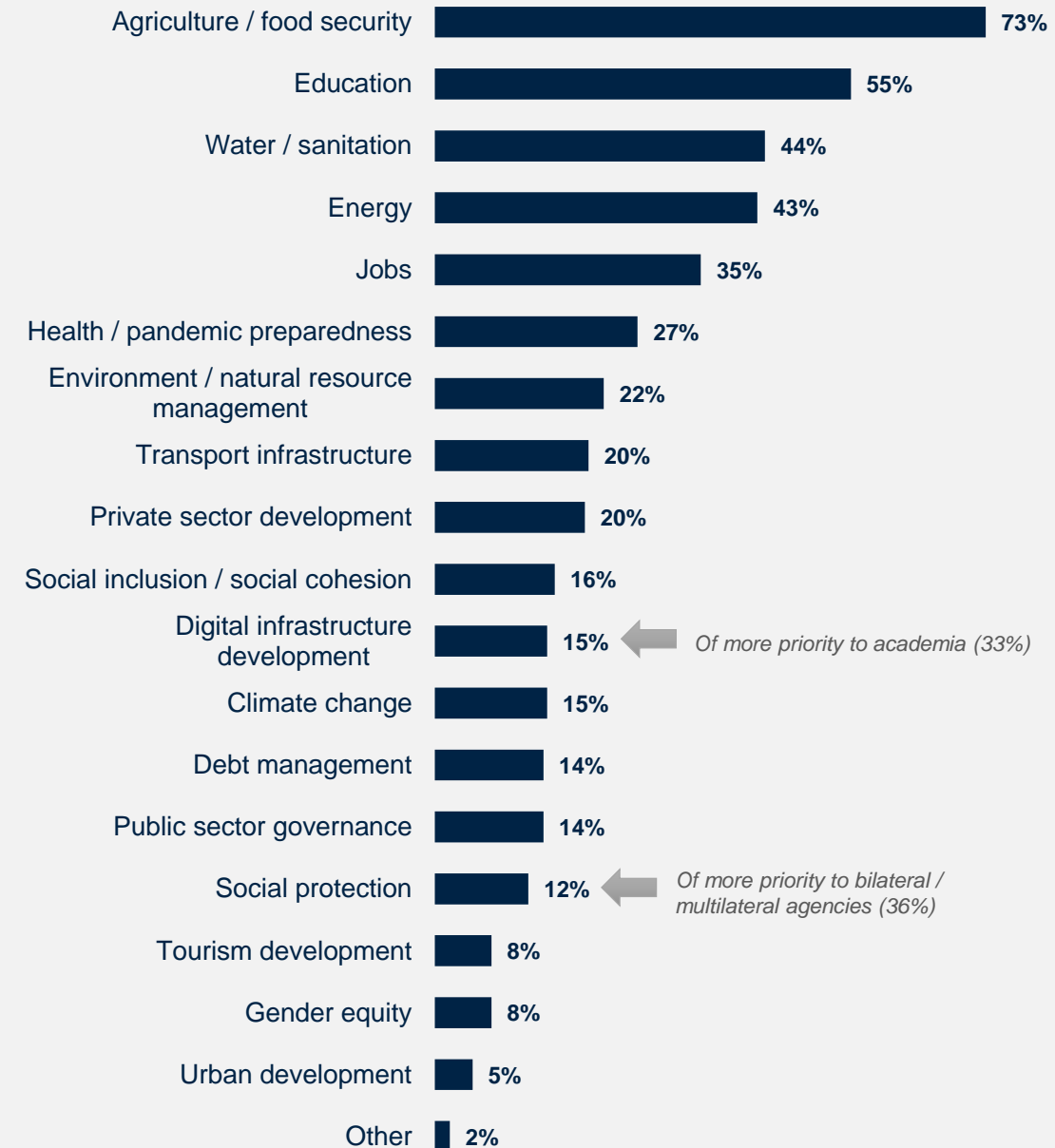
In your opinion, what is the most important thing the WBG could do to increase its effectiveness in Benin?

“In light of the climate changes observed in recent years, promote water management for agricultural purposes through resilient, permanent hydro-agricultural development, and the availability and accessibility of high-performance production factors adapted to Benin's growing conditions.”

(Government Institution Respondent)

“To increase its effectiveness in Benin, the most important thing the World Bank Group could do is to strengthen basic infrastructure, notably energy, transport, and information and communication technologies (ICT). This would improve productivity, facilitate trade and access to essential services, thereby stimulating economic growth and sustainable development.”

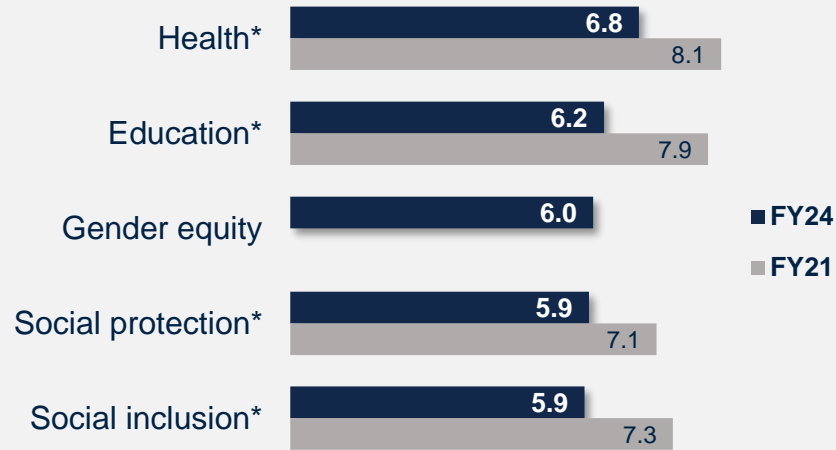
(Local Government Respondent)



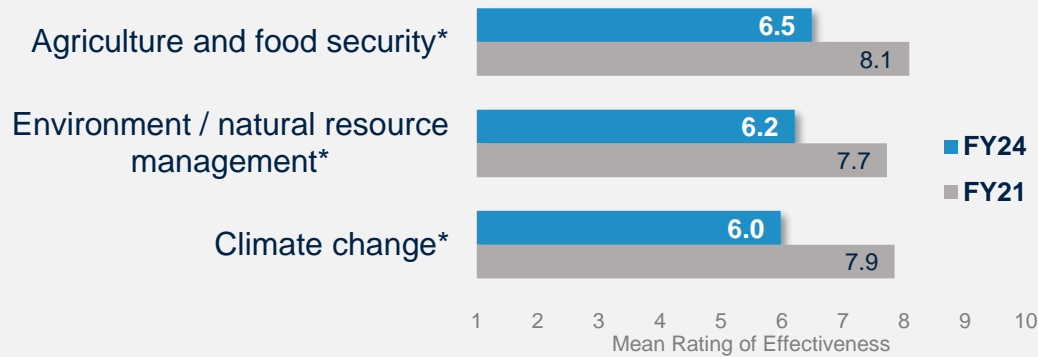
Effectiveness of WBG's Sectoral Support

The WBG's **water/sanitation and health** work received the highest effectiveness ratings. Of note is that the effectiveness of the WBG's support in all sectors that could be compared has significantly declined, most notably in **climate change** and **public sector governance**.

Human Development



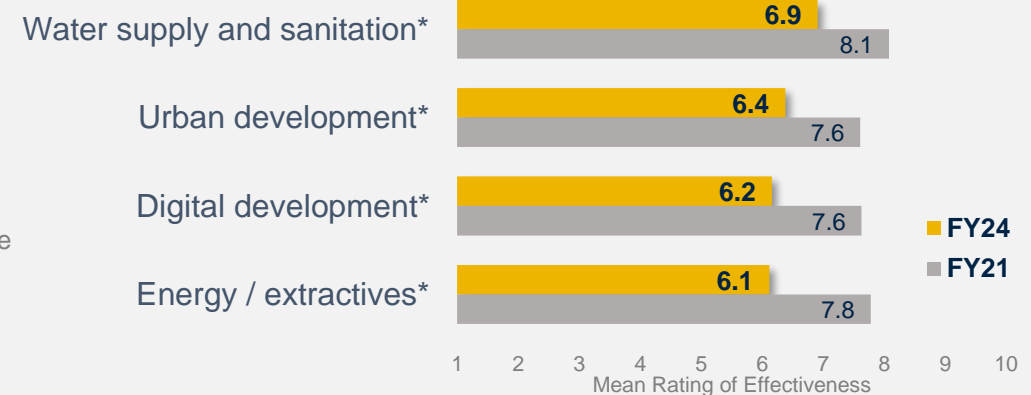
Environmental Sustainability



Finance / Institutions / Economic Growth



Infrastructure



*Significant difference between years

World Bank Group's Engagement on the Ground in Benin

“The WBG must adopt a participatory strategy with all stakeholders in the design, implementation, and evaluation of its programs. The satisfaction of citizens' needs must be at the heart of its policy.” (Parliamentarian Respondent)



WORLD BANK GROUP



In your opinion, what is the most important thing the WBG could do to increase its effectiveness in Benin? (N=120)

Perceptions of the WBG as a Long-Term Partner have Declined

In FY24, respondents' perceptions of the WBG as a **long-term partner**, that is **open, responsive, and flexible** were less positive than in the FY21 survey.

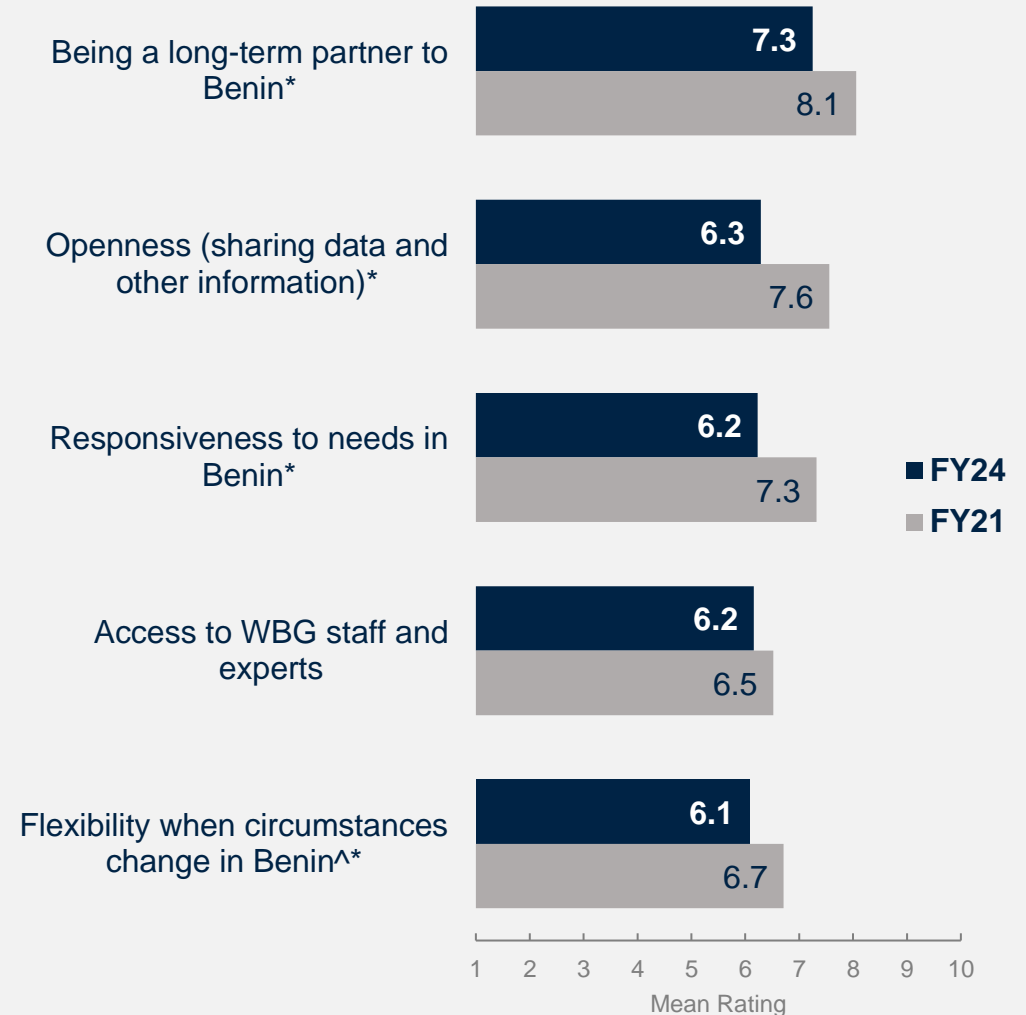
In your opinion, what is the most important thing the WBG could do to increase its effectiveness in Benin?

“Be more accessible, communicate much more to make yourself and your products better known, and, above all, implement flexible procedures adapted to the context and environment of your target audiences.”

(Government Institution Respondent)

“The WBG has its own priority areas of intervention. I believe it is necessary to broaden these areas to take better account of people's needs, and to improve the government's ability to intervene on their behalf. In fact, sometimes the needs exist but cannot be covered by projects because the WBG believes that they are not a priority, or that the projects are not in the areas covered by the WBG.”

(Government Institution Respondent)



*Significant difference between years

To what extent is the WBG an effective development partner in terms of the following?

Scale: 1 To no degree at all – 10 To a very significant degree

^Compared to the mean of institutional flexibility and flexibility to changes in the country context asked in FY21.



The WBG Collaborates Most Effectively with the National Government of Benin

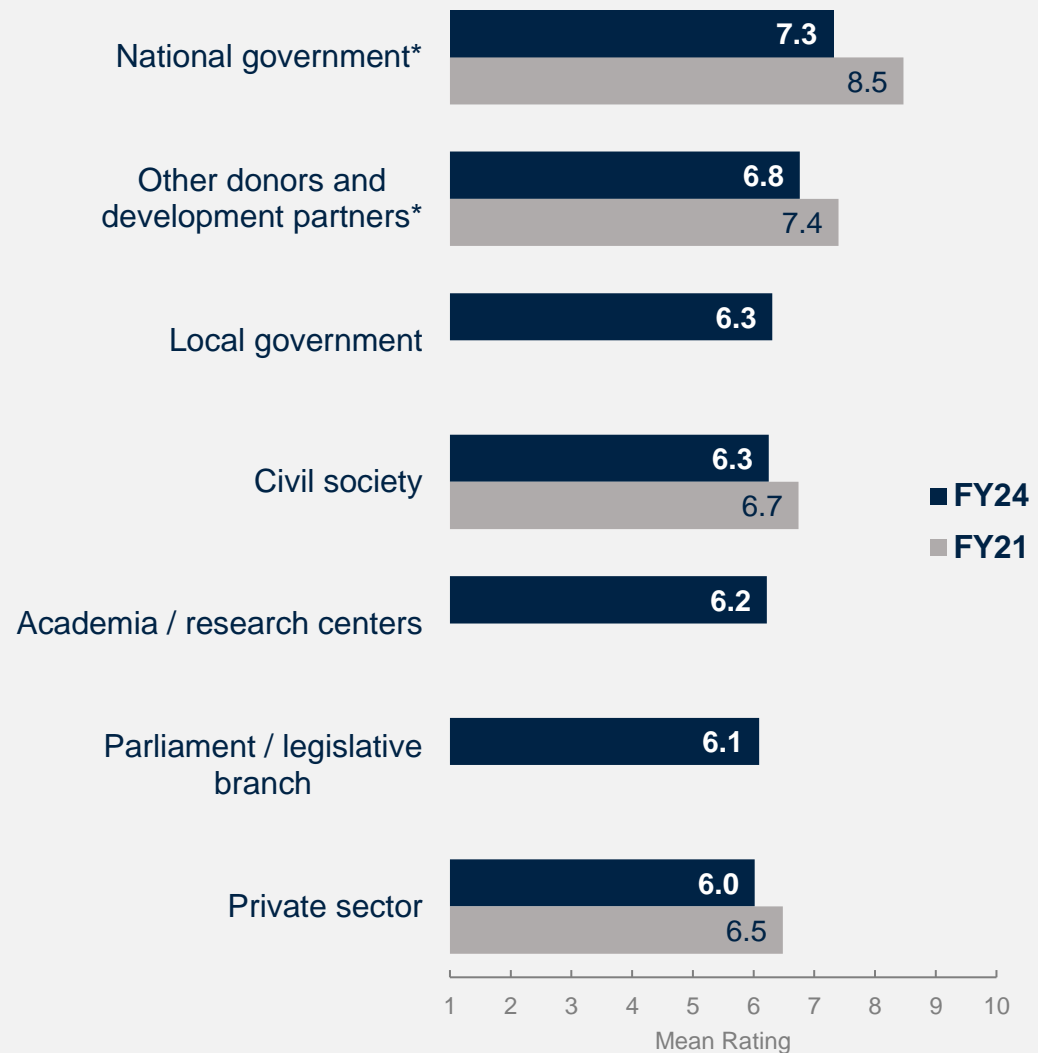
In FY24, perceptions of the effectiveness of the WBG’s collaboration with the **national government** and **other donors and development partners** have declined significantly compared to FY21. The WBG received the lowest ratings for its collaboration with the **private sector**, which was also rated the lowest in FY21.

In your opinion, what is the most important thing the WBG could do to increase its effectiveness in Benin?

“Work in closer consultation/dialogue with other bilateral and multilateral partners, rather than ‘going it alone’ with the Government.” (Bilateral or Multilateral Agency Respondent)

“Strengthen collaboration with Beninese government institutions, in particular the results-based funding model.” (Government Institution Respondent)

“Strengthen collaboration with civil society organizations and the private sector.” (Civil Society Respondent)



*Significant difference between years

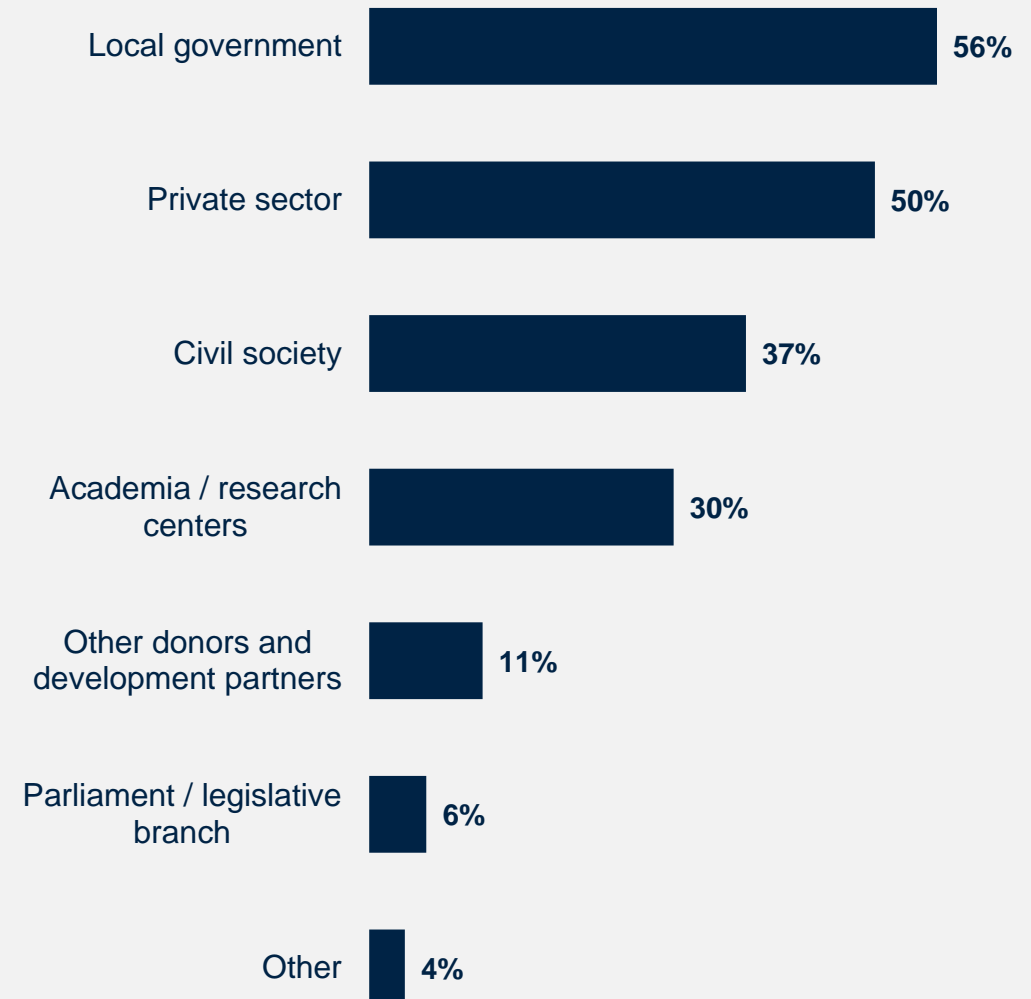
Stakeholders Want the Bank to Collaborate More with Local Government and Private Sector

A majority of respondents in this year's survey indicated that the WBG should collaborate more with **local government** and the **private** sector in addition to its partnership with the **national government**. Approximately a third of respondents also welcomed more collaboration with **civil society** and **academia**.

Targeted outreach to the private sector and academia is particularly recommended because respondents from these stakeholder groups were less familiar with the WBG and held more critical views of its work.

In your opinion, what is the most important thing the WBG could do to increase its effectiveness in Benin?

“Working directly with communities at the grassroots level. Work with communities to identify their real problems and provide solutions in line with their own aspirations. Education, health, agriculture, livestock, fisheries, energy, and basic infrastructure should be the areas to focus on with grassroots communities. The central state and its local governments should simply play a monitoring role to ensure the rational use of resources, without having the power to prevent communities from truly choosing what suits them and not what suits their leaders.” (Government Institution Respondent)



In addition to its partnership with the national government, which of the following should the WBG collaborate with more to have greater impact in Benin? (Select up to 2) (Percentage of Respondents, N=198)



World Bank Group's Financial Instruments and Knowledge Work

“Set up an impact assessment system for each policy. Carry out impact assessments of all policies and/or reforms implemented, with a view to making new decisions.” (Local Government Respondent)

*“Provide a large part of its technical and financial support for grassroots development through local development organizations (development associations, local development structures, etc.).”
(Government Institution Respondent)*



WORLD BANK GROUP



In your opinion, what is the most important thing the WBG could do to increase its effectiveness in Benin? (N=120)

Financial Resources and Technical Assistance Considered the Bank's Greatest Values to Benin

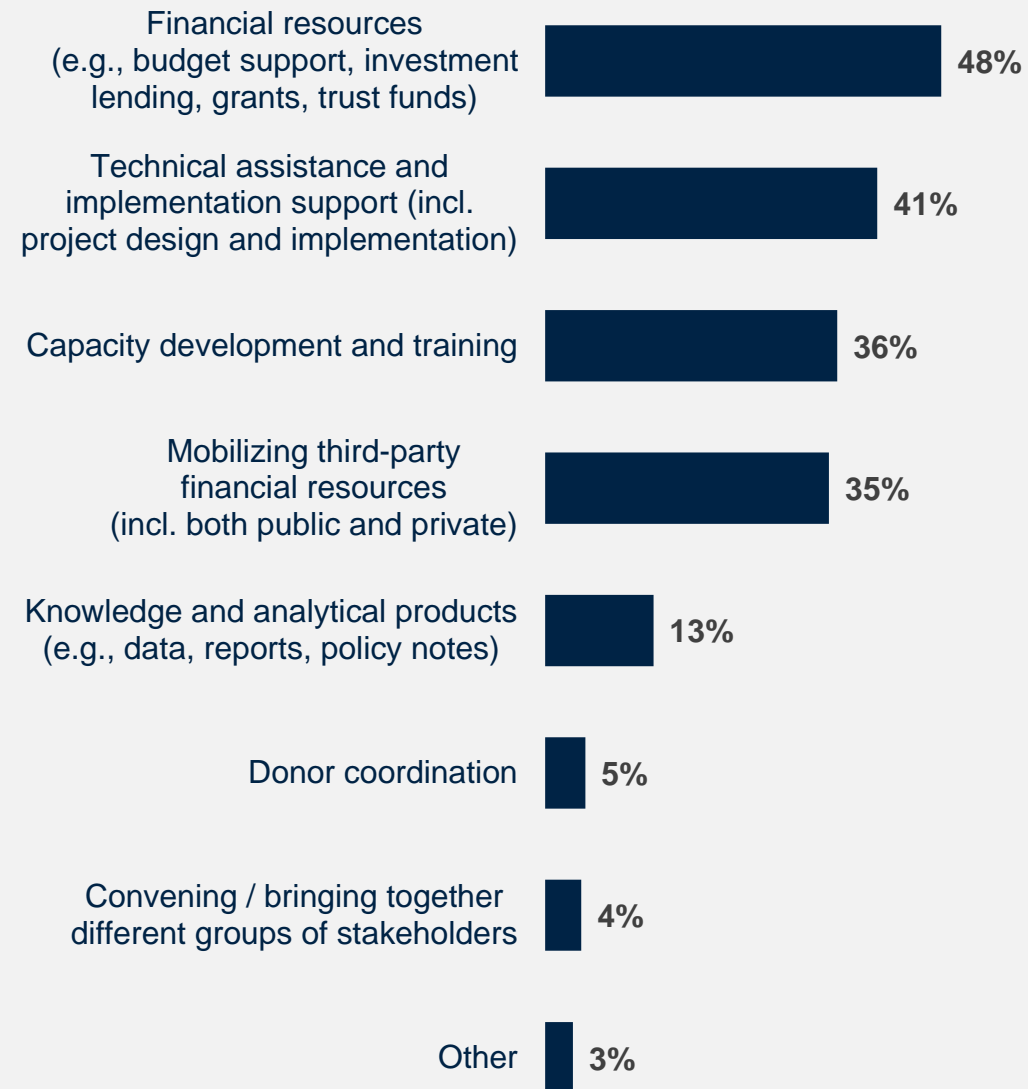
Respondents considered the WBG's **financial resources, technical assistance, and implementation support** to be its greatest values to Benin, followed closely by **capacity development and training** and **mobilizing third-party financial resources**.

- Respondents from bilateral or multilateral agencies were much more likely to identify financial resources as the WBG's greatest value (92%) than respondents from other stakeholder groups. In contrast, respondents from academia were significantly less likely (28%).
- Respondents from bilateral or multilateral agencies and academia were much less likely to identify mobilizing 3rd party financial resources as the WBG's greatest value (17% and 14%, respectively) compared to respondents from other stakeholder groups.

In your opinion, what is the most important thing the WBG could do to increase its effectiveness in Benin?

"Contextualize aid and loans by focusing on capacity-building for local players... endogenous practices and knowledge must be promoted."
(Local Government Respondent)

"Plan exchange visits to enable players to share experiences."
(Civil Society Respondent)

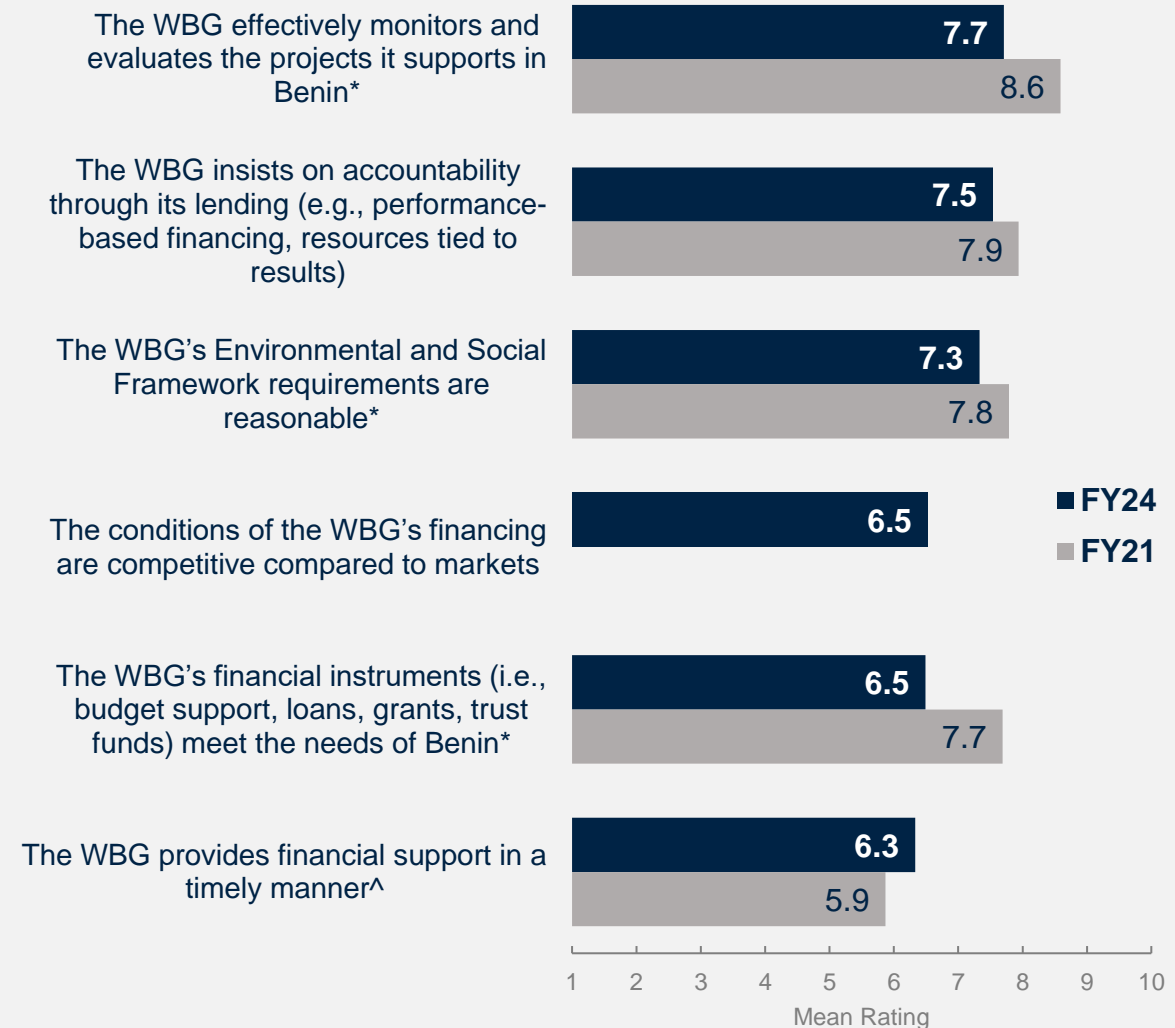


Which WBG instruments do you VALUE the most in Benin? (Select up to 2)
(Percentage of Respondents, N=205)

The WBG Monitors and Evaluates Its Projects and Insists on Accountability Through Its Lending

Regarding the WBG’s financial instruments, respondents had the highest levels of agreement that **the WBG effectively monitors and evaluates its projects** (although significantly declined compared to FY21) and that **the WBG insists on accountability through its lending**. Respondents had significantly lower levels of agreement that **the WBG’s Environmental and Social Framework requirements are reasonable** and that **the WBG’s financial instruments meet Benin’s needs** compared to FY21.

Of note, respondents from government institutions had the highest levels of agreement that the WBG effectively monitors and evaluates its projects (mean = 8.4). In contrast, respondents from bilateral or multilateral agencies and the private sector had significantly lower levels of agreement (both means = 6.3).

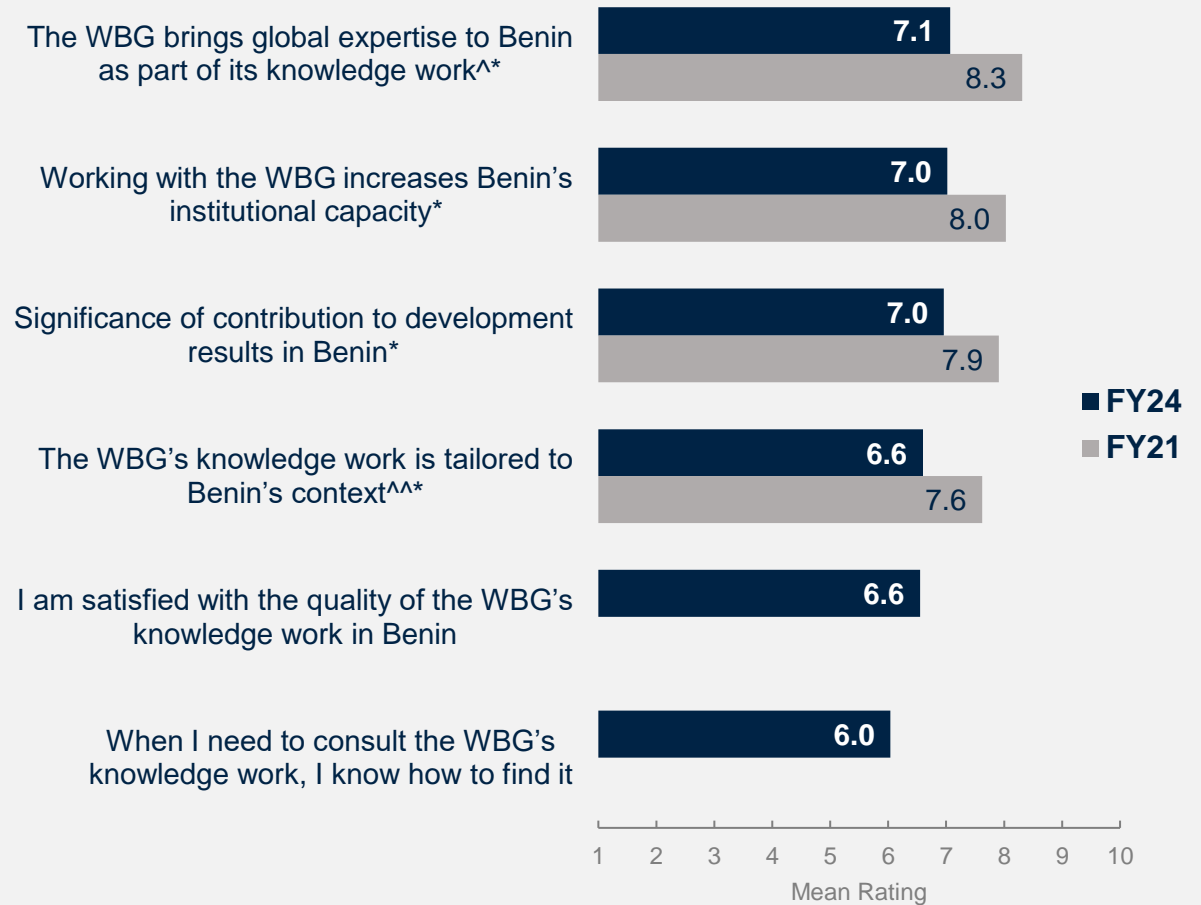


*Significant difference between years

To what extent do you agree/disagree with the following statements? Scale: 1 Strongly disagree – 10 Strongly agree
 ^Compared to "The World Bank Group disburses funds promptly" in FY21



55% of Respondents Used the WBG's Knowledge Work; but WBG Knowledge Perceived Less Positively



*Significant difference between years

Have you ever used the WBG's knowledge work, including participating in workshops or training programs? (Percentage of Respondents, N=210)

To what extent do you agree with the following statements? Scale: 1 Strongly disagree – 10 Strongly agree

How significant a contribution do you believe the WBG's knowledge work makes to development results in Benin? Scale: 1 Not significant at all – 10 Very significant

[^]Compared to "Source of relevant information on global good practices" asked in FY21.

^{^^}Compared to "Are adaptable to Benin's specific development challenges and country circumstances" in FY21.



The Future Role of the World Bank Group in Benin

- “1) Support the development of agribusiness in Benin;*
- 2) Support the fight against corruption in the management of development projects, as the Millennium Challenge Account has done;*
- 3) Support Benin's national innovation system through the Triple Helix State-Universities/ Research Centers-Industries/Enterprises to create an environment more conducive to innovation and development;*
- 4) Support Benin in implementing its NEPAD commitments, in particular, the CAADP (Comprehensive Africa Agriculture Development Program); and*
- 5) Support Benin's beneficial participation in the CoPs and sufficient mobilization of climate change-related funds.”*
- (Academia Respondent)*



WORLD BANK GROUP



In your opinion, what is the most important thing the WBG could do to increase its effectiveness in Benin? (N=120)

How Can the WBG Increase its Effectiveness? (Open-Ended Responses)

Align projects to Benin's needs and adapt them to local context; more/better engagement with stakeholders



Focus Area

- Human capital, especially education
- Infrastructure, including transport, water, and energy
- Private sector development and employment creation
- Agriculture development with an emphasis on climate change adaptations

Engagement

- Engage on a more local level to better understand the needs and context in Benin
- More engagement outside of government, especially at the local level, can better ensure projects achieve their desired results
- More effective collaboration with the national government and other donors and partners to achieve greater results

Knowledge

- Greater focus on capacity development and training
- More support for capacity building and training at the local level
- More knowledge sharing and exchange of experiences

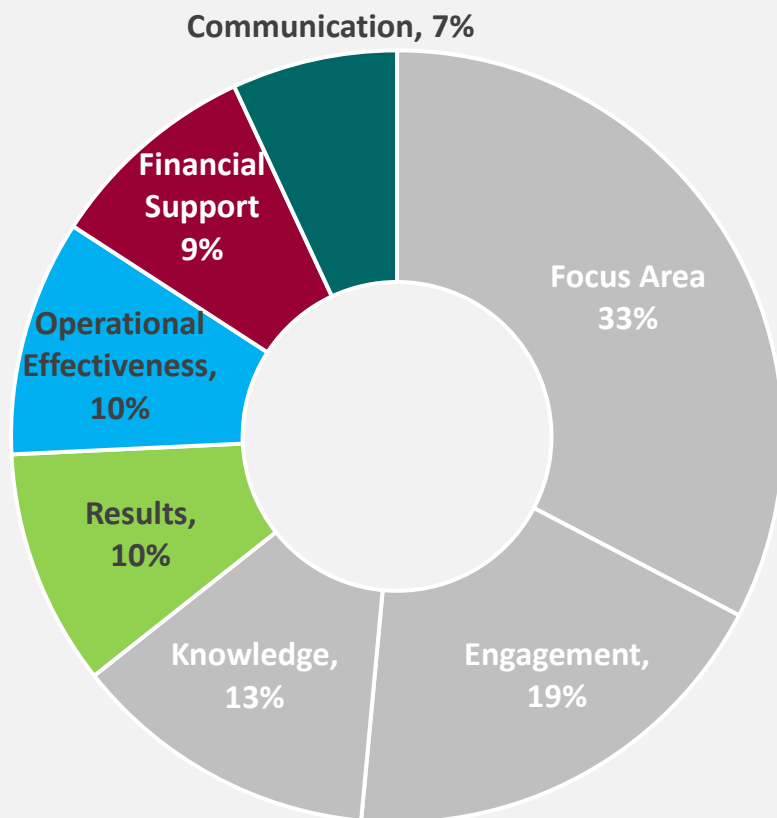


In your opinion, what is the most important thing the World Bank Group could do to increase its effectiveness in Benin? (N=120)

All percentages are calculated based on the total number of comments made by respondents; individual comments could be counted multiple times depending on the number of topics they covered, so the sum of all percentages may be greater than 100%.

How Can the WBG Increase its Effectiveness? (Open-Ended Responses)

Align projects to Benin's needs and adapt them to local context; more/better engagement with stakeholders



Results

- More rigorous and continuous monitoring of WBG-funded projects to ensure objectives are met
- Ensure projects are aligned to national priorities

Operational Effectiveness

- Greater flexibility is needed to work effectively in Benin
- Bank staff and experts should be more accessible

Financial Support

- Increased access to financing, with more flexible conditions, but insist on accountability

Communication

- More communication regarding WBG projects and their results to increase awareness and support for future projects



*In your opinion, what is the most important thing the World Bank Group could do to increase its effectiveness in Benin? (N=120)
All percentages are calculated based on the total number of comments made by respondents; individual comments could be counted multiple times depending on the number of topics they covered, so the sum of all percentages may be greater than 100%.*

Communication and Outreach

“Broad communication of the WBG in Benin to all institutions of the republic, civil society, student youth, vulnerable groups, through outreach campaigns using community relays, etc.”
(Government Institution Respondent)

“Awareness is needed at all levels.” (Academia Respondent)



WORLD BANK GROUP



In your opinion, what is the most important thing the WBG could do to increase its effectiveness in Benin? (N=120)

Events and e-Newsletters were Most Preferred WBG Channels

Respondents most preferred to receive the WBG's communications through **events/conferences/seminars/workshops** (in person or online) and **e-newsletters**, followed by **direct contact with staff** and **direct messaging**.

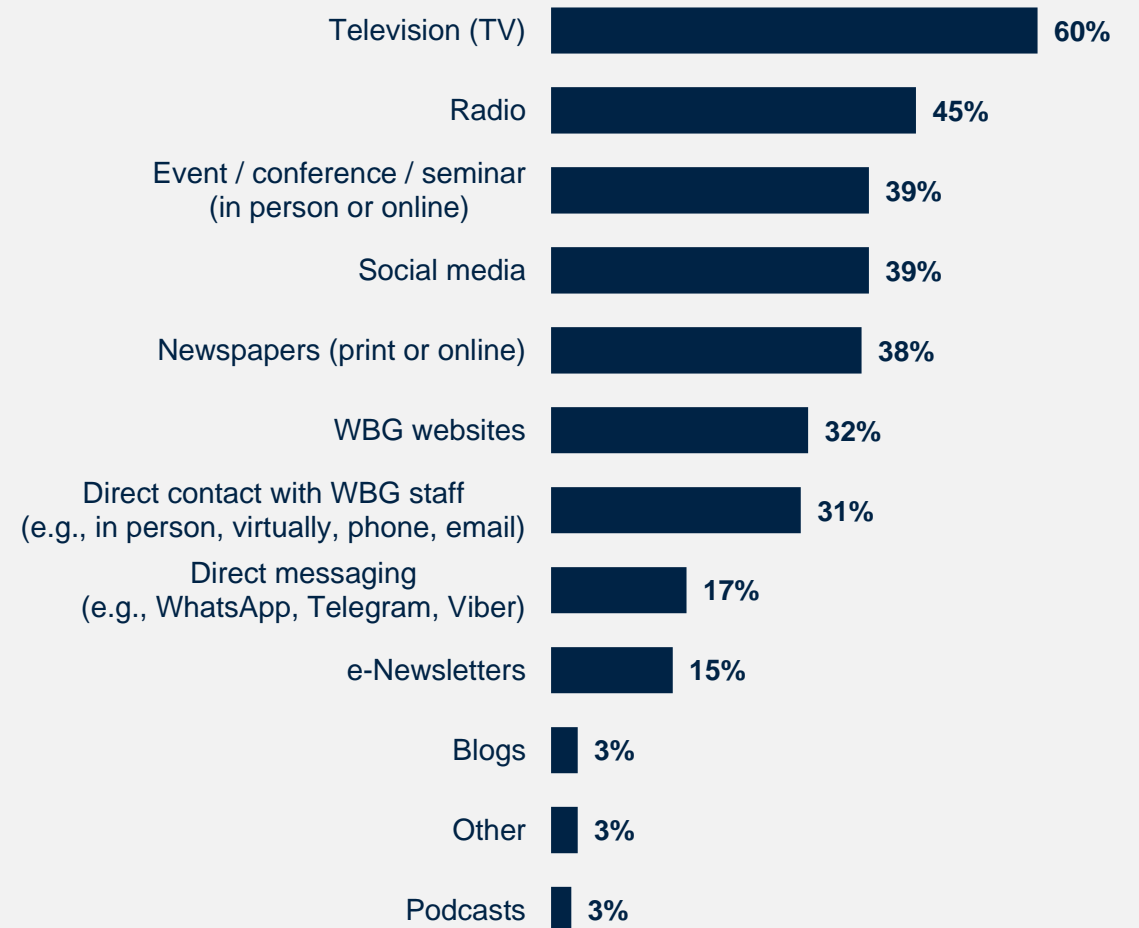
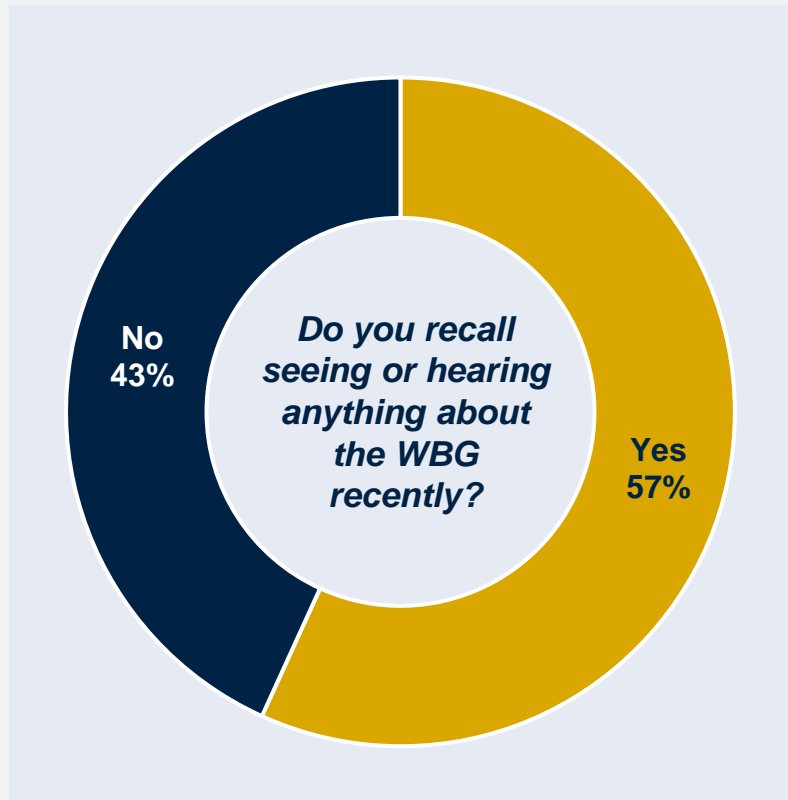
	Preferred WBG Channel						
	All Respondents	Government Institutions	Local Government	Bilateral or Multilateral Agencies	Civil Society	Private Sector	Academia
Event / conference / seminar / workshop <i>(in person or online)</i>	52%	44%	58%	46%	53%	69%	59%
e-Newsletters	48%	54%	52%	36%	44%	23%	55%
Direct contact with staff <i>(e.g., in person, virtually, phone, email)</i>	40%	35%	32%	27%	56%	46%	31%
Direct messaging <i>(e.g., WhatsApp, Telegram, Viber)</i>	36%	31%	42%	36%	31%	31%	31%
Social media <i>(e.g., Facebook, Twitter)</i>	10%	14%	3%	9%	9%	23%	10%
Other	2%	0%	0%	18%	3%	0%	3%



How would you prefer to receive communication from the WBG? (Select up to 2)
(Percentage of Respondents, N=200)

Nearly 6 in 10 Respondents Recalled Seeing/Hearing about the WBG Recently, Most Often on TV

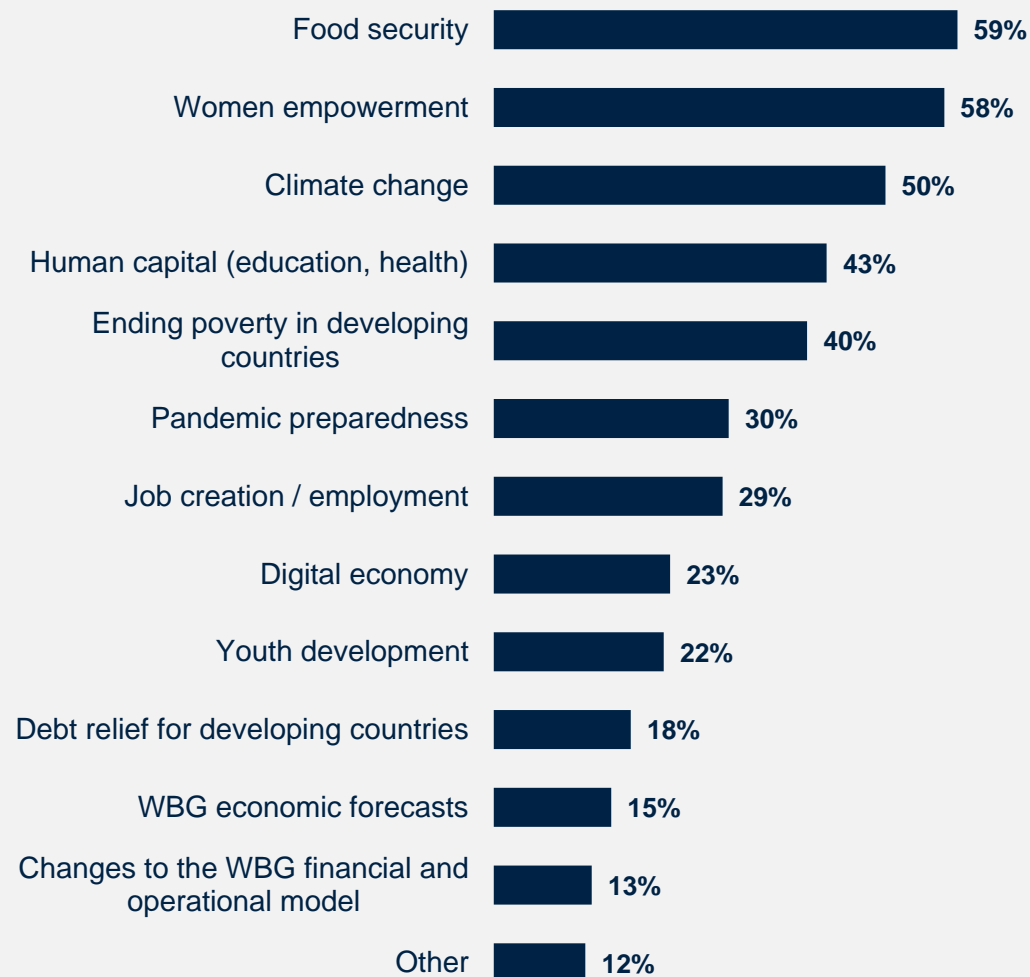
57% of respondents recalled hearing or seeing something about the WBG recently. Respondents most often reported seeing/hearing about the WBG on TV, followed by radio, events/conferences/seminars, social media, and newspapers.



The WBG's Work on Food Security and Gender were the Most Commonly Recalled Topics

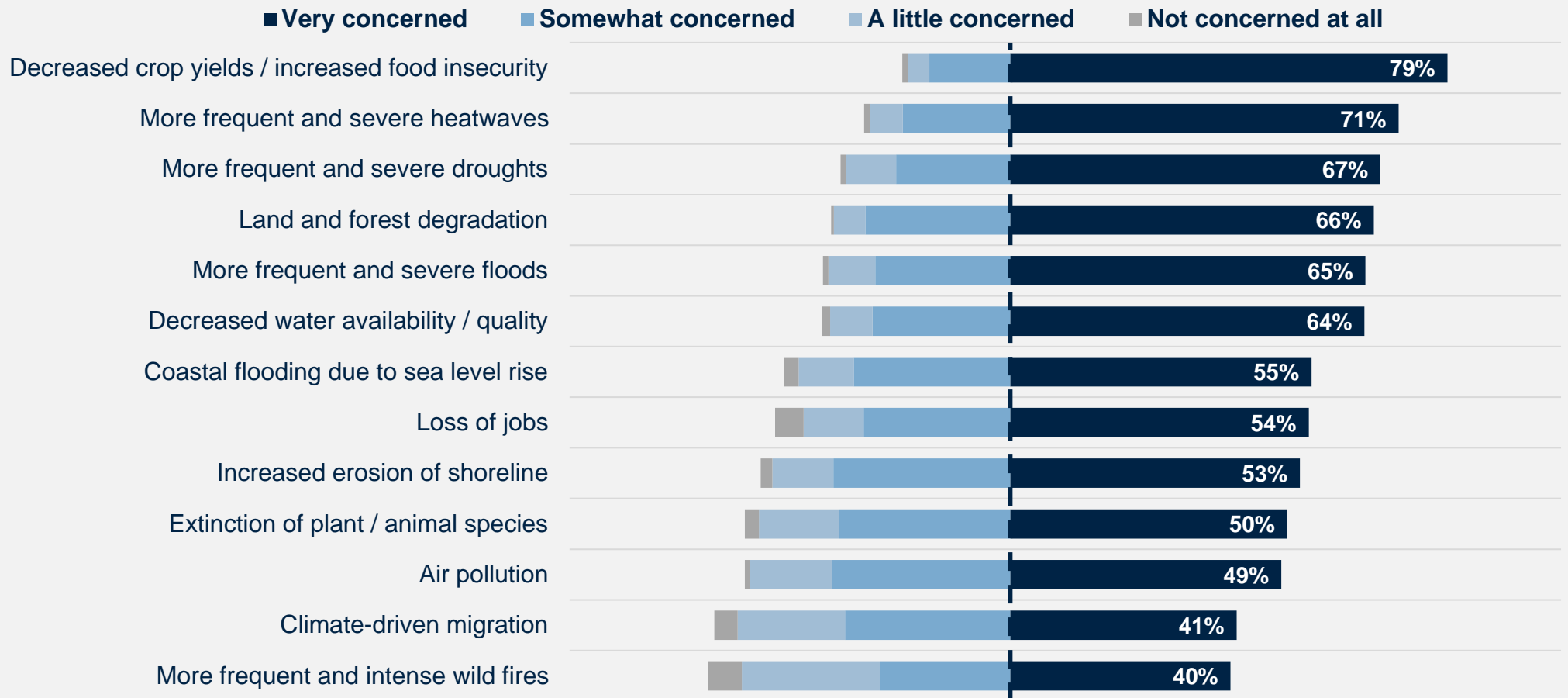
Respondents most frequently recalled the WBG's work or research on **food security** and **women empowerment**, followed by **climate change**, **human capital**, and **ending poverty** in developing countries.

- Respondents from local government were much more likely to recall the WBG's work on human capital (65%) than respondents from other stakeholder groups. In contrast, respondents from the private sector and academia were significantly less likely (13% and 19%, respectively).



Climate Change Communications can be More Impactful when Related to Stakeholders' Top Concern: Food Security

Nearly 8 in 10 respondents were **very concerned** about the potential impact of **decreased crop yields and increased food insecurity** due to climate change in Benin. **More frequent and severe heatwaves, droughts, and floods**, as well as **land and forest degradation** and **decreased water availability/quality**, were also of great concern to respondents. These key areas of concern should be considered to make communications about climate change more impactful.

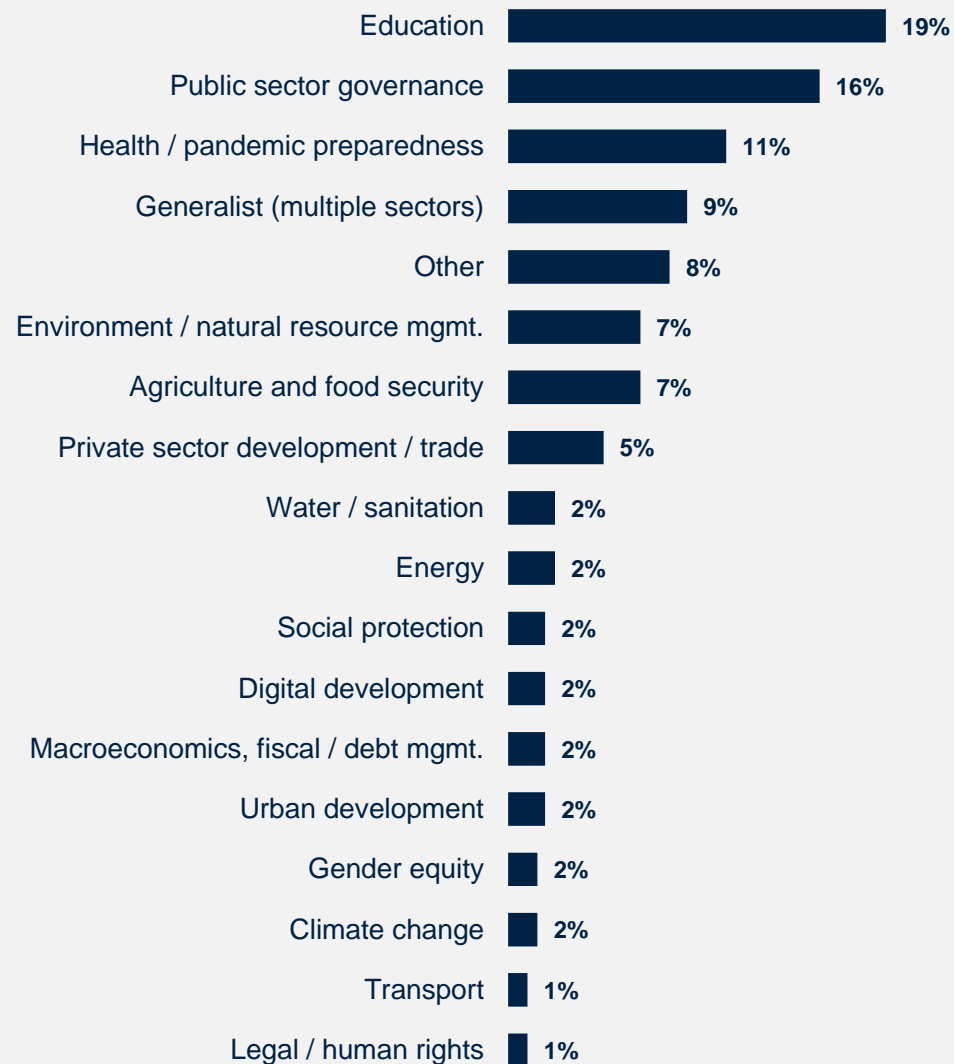


Sample Demographics and Detailed Methodology

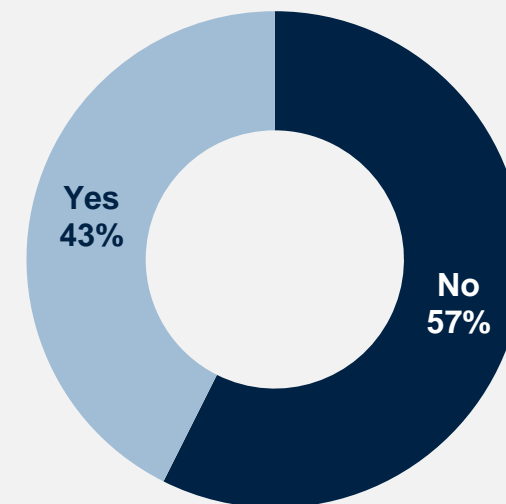


Sample Demographics

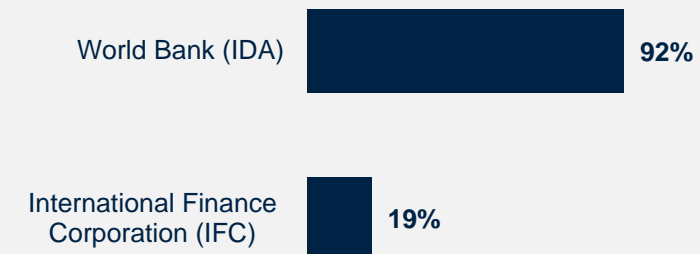
What is the primary specialization of your work? (N=206)



Do you collaborate/work with the World Bank Group (WBG) in Benin? (N=216)

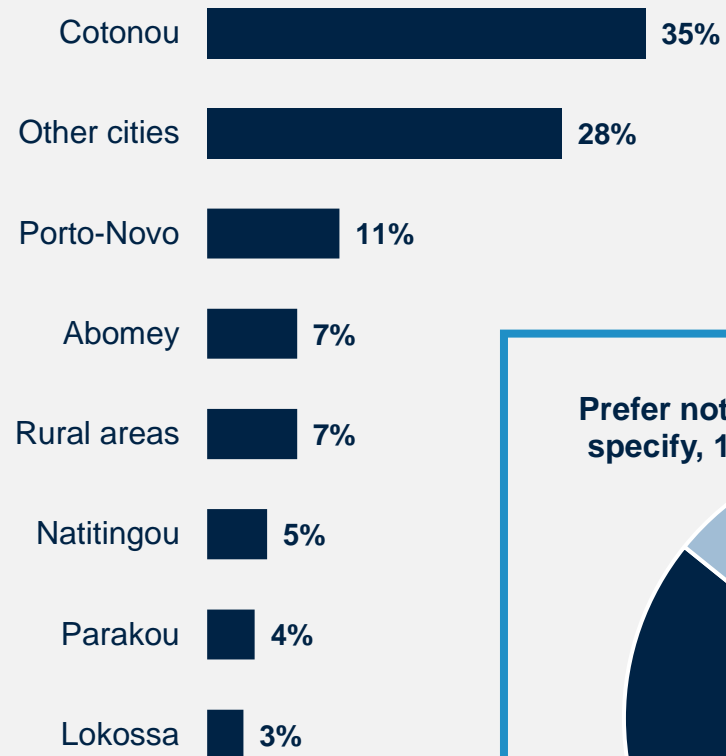


Which of the following WBG agencies do you collaborate/work with in Benin? (N=91)

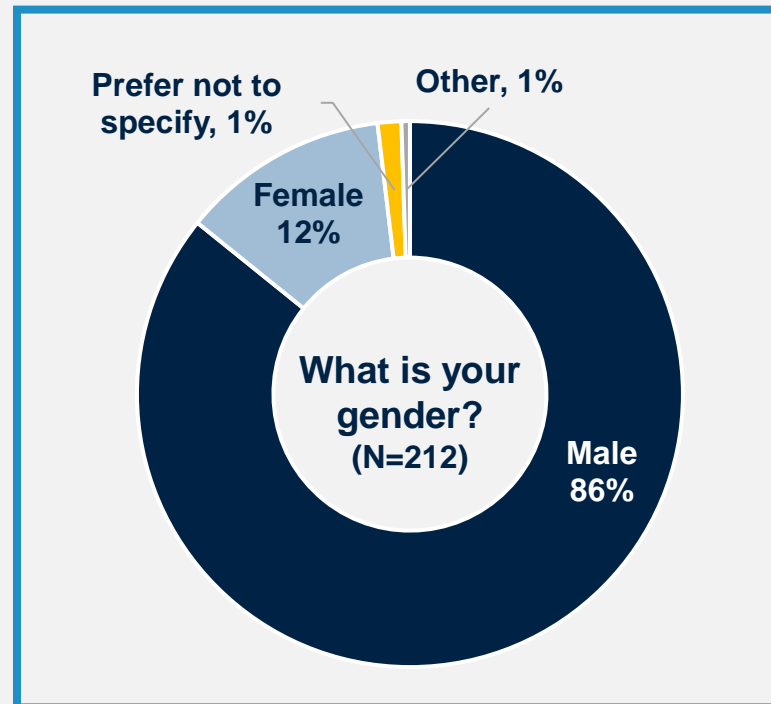
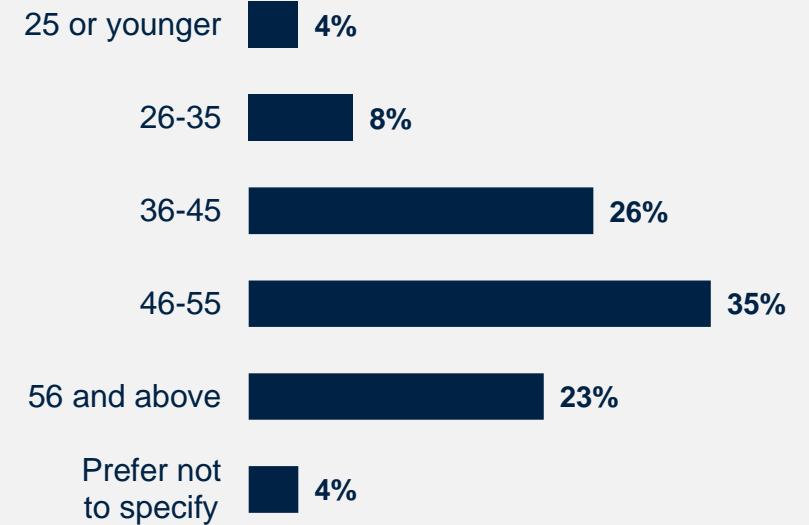


Sample Demographics (continued)

Which best represents your geographic location? (N=208)



What's your age? (N=212)



Detailed Methodology

From **May to June 2024**, a total of 651 stakeholders in Benin were invited to provide their opinions on the WBG’s work by participating in a Country Opinion Survey (COS). A list of potential participants was compiled by the WBG country team and the field agency. Participants were drawn from the Offices of the President, Minister, and Parliament, government institutions, local governments, bilateral or multilateral agencies, the private sector, civil society, academia, and the media.

Of these stakeholders, **220 participated in the survey (34% response rate)**. Respondents received the questionnaire via courier or mail and returned it accordingly or completed the questionnaire online.

This year’s survey results were compared to the FY21 Survey, which had a response rate of 71% (N=464).

Comparing responses across Country Surveys reflects changes in attitudes over time, as well as changes in respondent samples, methodology, and the survey instrument itself. To reduce the influence of the latter factor, only those questions with similar response scales/options were analyzed. This year’s survey saw greater outreach to and/or response from academia but a decrease from government institutions and local government. These differences in stakeholder composition between the two years should be considered when interpreting the results of the past-year comparison analyses.

Key statistically significant findings (tested at the research standard of $p < .05$) are noted throughout the report.

Breakdowns for individual questions by stakeholder group can be found in the “Benin COS FY24 Appendices with data breakdown and qualitative comments.xlsx” file published in the WBG Microdata Library, along with the survey microdata and this report.

Percentage of Respondents	FY 2021	FY 2024
Government Principals: Office of the President, Minister, Parliamentarian	6%	5%
Government Institutions: Employee of a Ministry, Department, Project Implementation Unit, Independent Government Institution, Judiciary, State-Owned Enterprise	33%	26%
Local Government	23%	16%
Bilateral/Multilateral Agency: Embassy, Development Organization, Development Bank, UN Agency	5%	6%
Civil Society Organization: Local and regional NGO, Community-Based Organization, Private Foundation, Professional/Trade Association, Faith-Based Group, Youth Group	14%	16%
Private Sector: Private Company, Financial Sector Organization, Private Bank	7%	7%
Academia / Research Center	3%	15%
Media	3%	2%
Other	5%	7%
Total Number of Respondents*	456	219



What is your primary professional affiliation? (Select only 1 response)

*Not all respondents provided information about their professional affiliation. Therefore, the total number of respondents listed in the table is lower than the N reported in the methodology.

Indicator Questions

Every country that engages in the Country Opinion Survey (COS) must include specific indicator questions, several of which are aggregated for the World Bank Group's annual Corporate Scorecard and are highlighted in red below.

A1_5. How much do you trust the World Bank Group to do what is right for Benin? Scale: 1 Not at all – 10 Very much

A2. How effective is the World Bank Group in helping Benin achieve development results? Scale: 1 Not effective at all – 10 Very effective

A3. How significant a contribution do you believe the WBG's knowledge work make to development results in Benin?
Scale: 1 Not significant at all – 10 Very significant

To what extent do you agree with the following statements? Scale: 1 Strongly disagree – 10 Strongly agree

A4. The WBG currently plays a relevant role in development in Benin.

A5. The WBG's work is aligned with what I consider the development priorities for Benin.

A6. The WBG has a positive influence on shaping development policy in Benin.

A7. The WBG's work helps end poverty in Benin

To what extent is the WBG an effective development partner in terms of each of the following? Scale: 1 To no degree at all – 10 To a very significant degree

C1_1. Responsiveness to needs in Benin

C1_2. Access to WBG staff and experts

C1_3. Flexibility when circumstances change in Benin

C1_5. Being a long-term partner to Benin

To what extent is the WBG an effective development partner in Benin, in terms of collaborating with the following groups?

Scale: 1 To no degree at all – 10 To a very significant degree

C2_1. National government

C2_4. Private sector

C2_5. Civil society

C2_6. Other donors and development partners

To what extent do you agree with the following statements? Scale: 1 Strongly disagree – 10 Strongly agree

C4_1. The WBG's financial instruments (i.e., budget support, loans, grants, trust funds) meet the needs of Benin

C4_3. The WBG provides financial support in a timely manner

C6_1. I am satisfied with the quality of the WBG's knowledge work in Benin

C6_4. The WBG's knowledge work is tailored to Benin's context.





CountryOpinionSurveys

Thank you

*For more information about this report
or the Country Opinion Survey program,
please contact:*

countrysurveys@worldbankgroup.org

