



CountryOpinionSurveys

FY 2024 Equatorial Guinea Country Opinion Survey Report

Acknowledgements

The Equatorial Guinea Country Opinion Survey is part of the Country Opinion Survey Program series of the World Bank Group. This report was prepared by the Business Intelligence (BI) team, led by José De Buerba (Senior External Affairs Officer) and Svetlana Markova (Senior External Affairs Officer). Yulia Danilina, Jessica Cameron, Nan Lin, and Sofya Gubaydullina oversaw the design, reporting, and analysis of the survey results. Noreen Wambui and Irina Popova provided data support.

BI acknowledges the significant contribution from the Equatorial Guinea country team and independent field agency, BEBOTRA. In particular, BI is grateful for the support from Odilia Renata Hebga (External Affairs Officer) and Cleto Ndong Asumu Okomo (Team Assistant), who coordinated the survey-related activities from Yaoundé, Cameroon, and Malabo, Equatorial Guinea.



Contents

Objectives

Methodology Overview

Overall Context

Overall Attitudes Toward the World Bank Group

World Bank Group's Support for Development Areas

World Bank Group's Engagement on the Ground in Equatorial Guinea

World Bank Group's Knowledge Work

The Future Role of the World Bank Group in Equatorial Guinea

Communication and Outreach

Sample Demographics and Detailed Methodology



Objectives

This survey was designed to assist the World Bank Group (WBG) in gaining a better understanding of how stakeholders in Equatorial Guinea perceive the WBG. The survey explored the following questions:

- 1. Overall Context:** How familiar are stakeholders with the WBG? How much do they trust the WBG?
- 2. Key Indicators:** What opinion do key stakeholders have of the WBG regarding its effectiveness, relevance, alignment with Equatorial Guinea's development priorities, and other key indicators? Are opinions improving or declining?
- 3. Development Priorities:** Have the priorities changed over the past three years?
- 4. Engagement on the Ground:** How is the WBG perceived as a development partner in Equatorial Guinea? Are opinions improving or declining?
- 5. Knowledge Work:** What do key stakeholders value the most regarding the WBG's work in Equatorial Guinea? What opinion do key stakeholders have of WBG knowledge products? Are opinions improving or declining? What are stakeholders' suggestions for improving WBG's effectiveness?
- 6. Communication and Outreach:** What are the preferred communication channels? Are there differences among stakeholder groups in terms of preferred channels?
- 7. Message Recall:** What key topics does the WBG communicate that stakeholders recall?



Methodology Overview

■ Fielded May 2024 – June 2024

- 400 potential participants were asked to complete a mostly quantitative survey
- Respondents completed the questionnaire on paper
- List of names provided by the WBG country team and supplemented by the field agency
- Process managed on the ground by the field agency

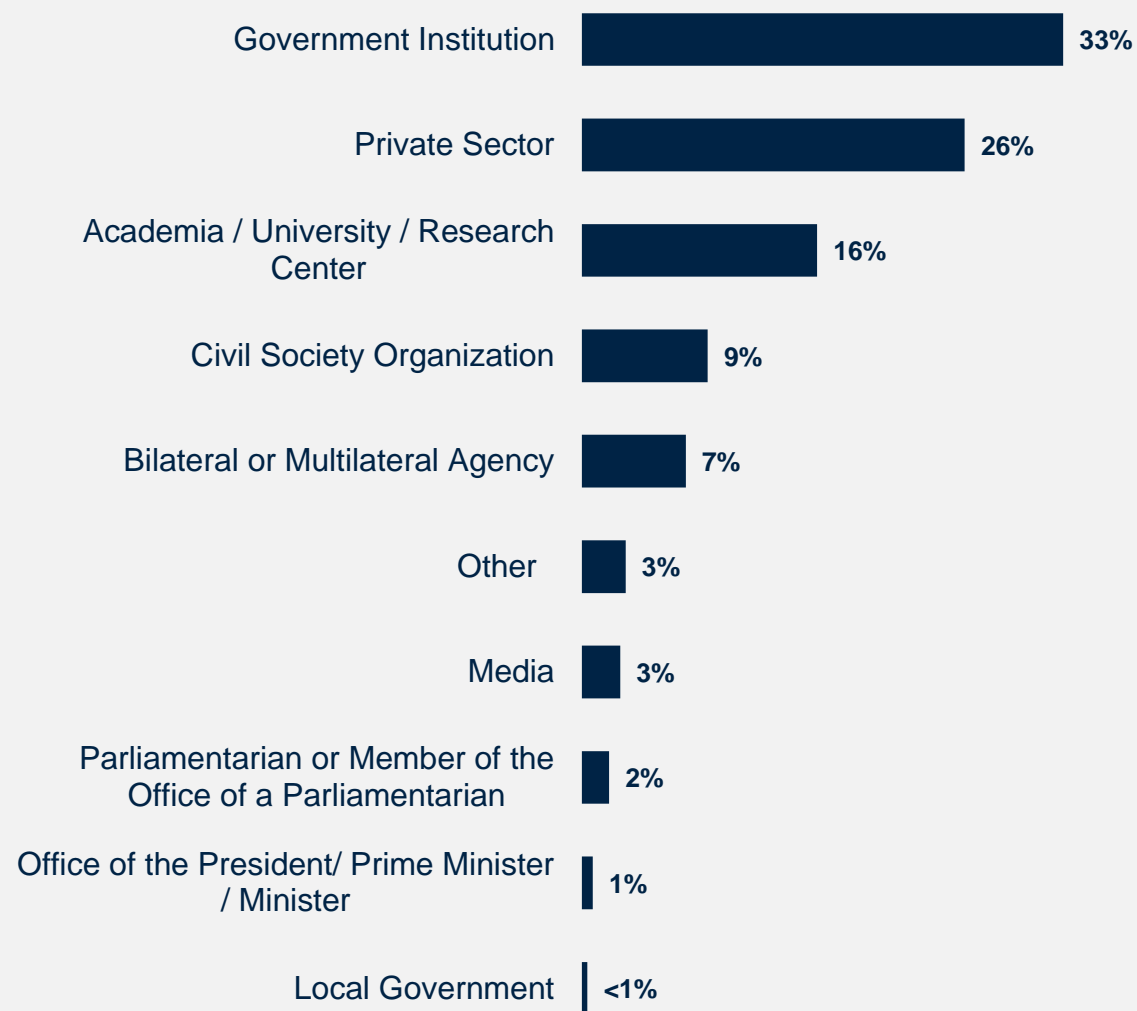
■ 267 participants (67% response rate)

- 94% from Malabo
- 22% currently collaborate with the WBG

■ Compared to Fiscal Year 2020 (FY20) Country Survey

- 165 participants (37% response rate)
- Respondents completed the questionnaire online or on paper
- 19% collaborated with the WBG

Click [here](#) for details of the Respondent Sample and Methodology.



What is your primary professional affiliation? (Select only 1 response)
(Percentage of Respondents, N=266)

Overall Context

“The World Bank Group in the Central African sub-region has demonstrated its effectiveness in community development, education, health and other sectors. In Equatorial Guinea, we note that these areas have been transformed through the intervention of the World Bank. However, it is important to emphasize that the impact is not yet fully significant...”

(Civil Society Organization Respondent)



WORLD BANK GROUP



In your opinion, what is the most important thing the WBG could do to increase its effectiveness in Equatorial Guinea? (N=183)

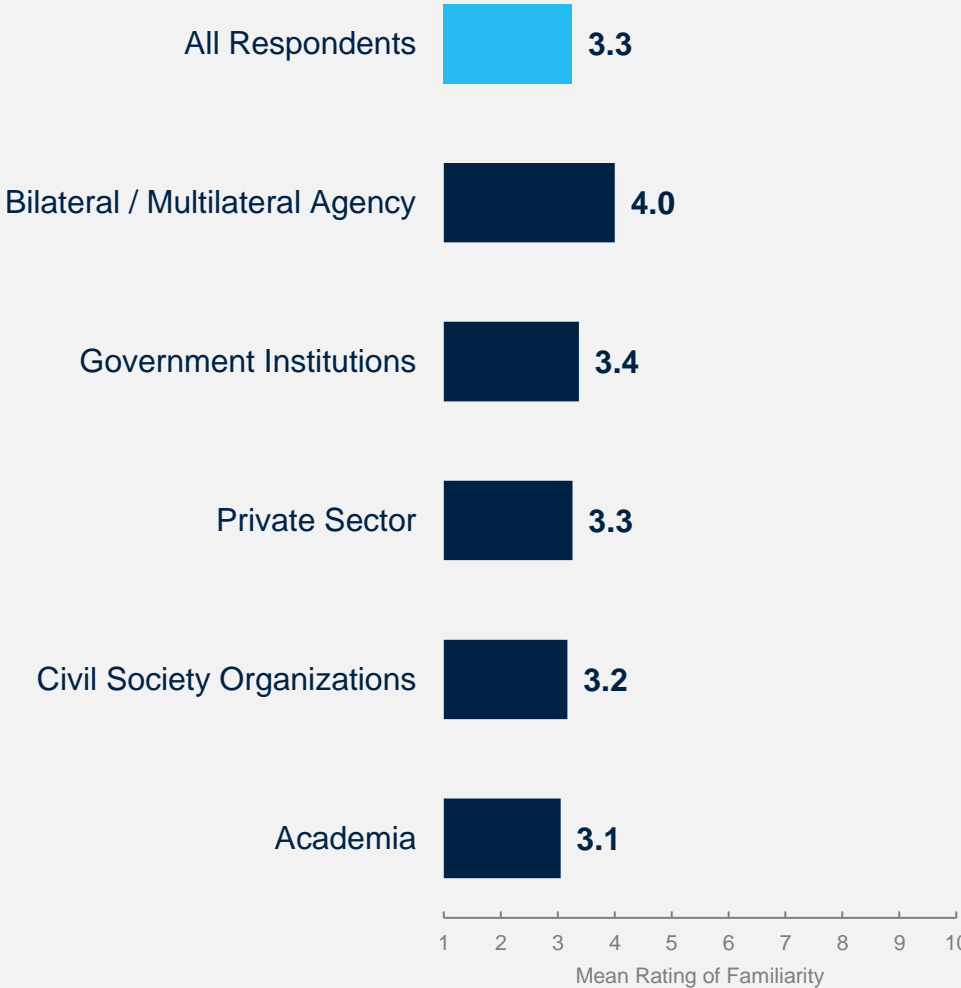
Familiarity with the World Bank Group

- **Comparison of FY20 and FY24:** Respondents in this year’s Country Survey reported consistently low levels of familiarity with the WBG, similar to those observed in the FY20 Survey.

- Mean familiarity: **FY24 = 3.3**
FY20 = 3.6

- **Collaboration with the WBG:** Although respondents who indicated that they collaborate with the WBG reported significantly higher levels of familiarity with the institution’s work, both ratings remain quite low:

Mean familiarity: **Collaborate with WBG = 4.6**
Do not collaborate = 2.9

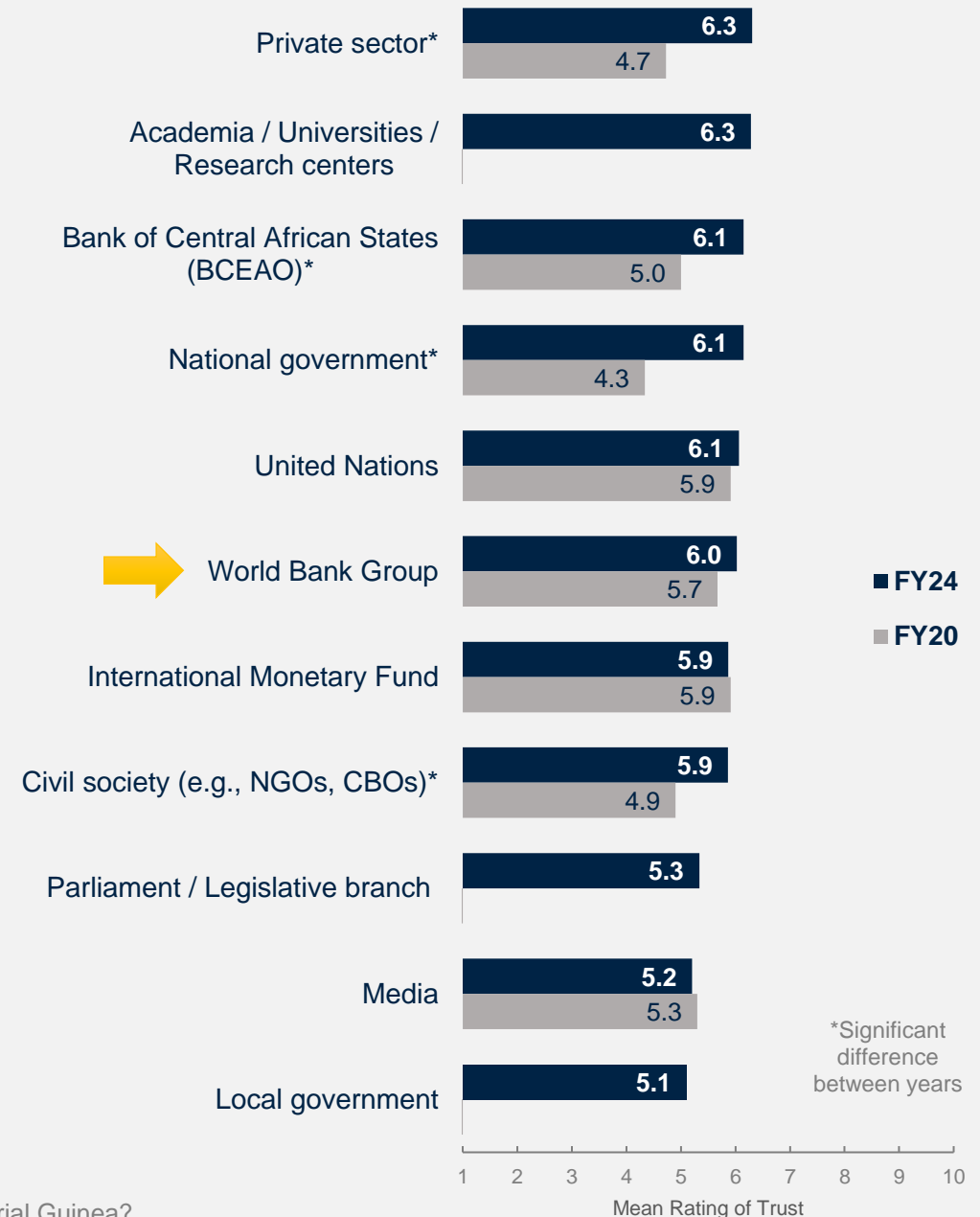


Note: **Government Institutions** include the Office of the President/Prime Minister/Minister, government institutions, and local government groups. The sample size from the Office of a Parliamentarian and media groups was insufficient to include them in the stakeholder analysis.

The Private Sector and Academia are the Most Trusted Groups

Respondents in Equatorial Guinea rated the private sector and academia as the most trustworthy institutions. Levels of trust in the WBG remained rather moderate.

Trust in the private sector, BCEAO, national government, and civil society has significantly increased in FY24 compared to FY20. At the same time, trust ratings for the media and local government were the lowest among those institutions studied.



Overall Attitudes toward the World Bank Group

“As a citizen and born son of this country, I believe the WBG should implement transparent policies and conduct surveys to understand the social, family, and institutional realities. It should also reorient its activities and competencies to better diversify the country's economic potential and develop strategies that can green the country's family economy.”

(Government Institutions Respondent)



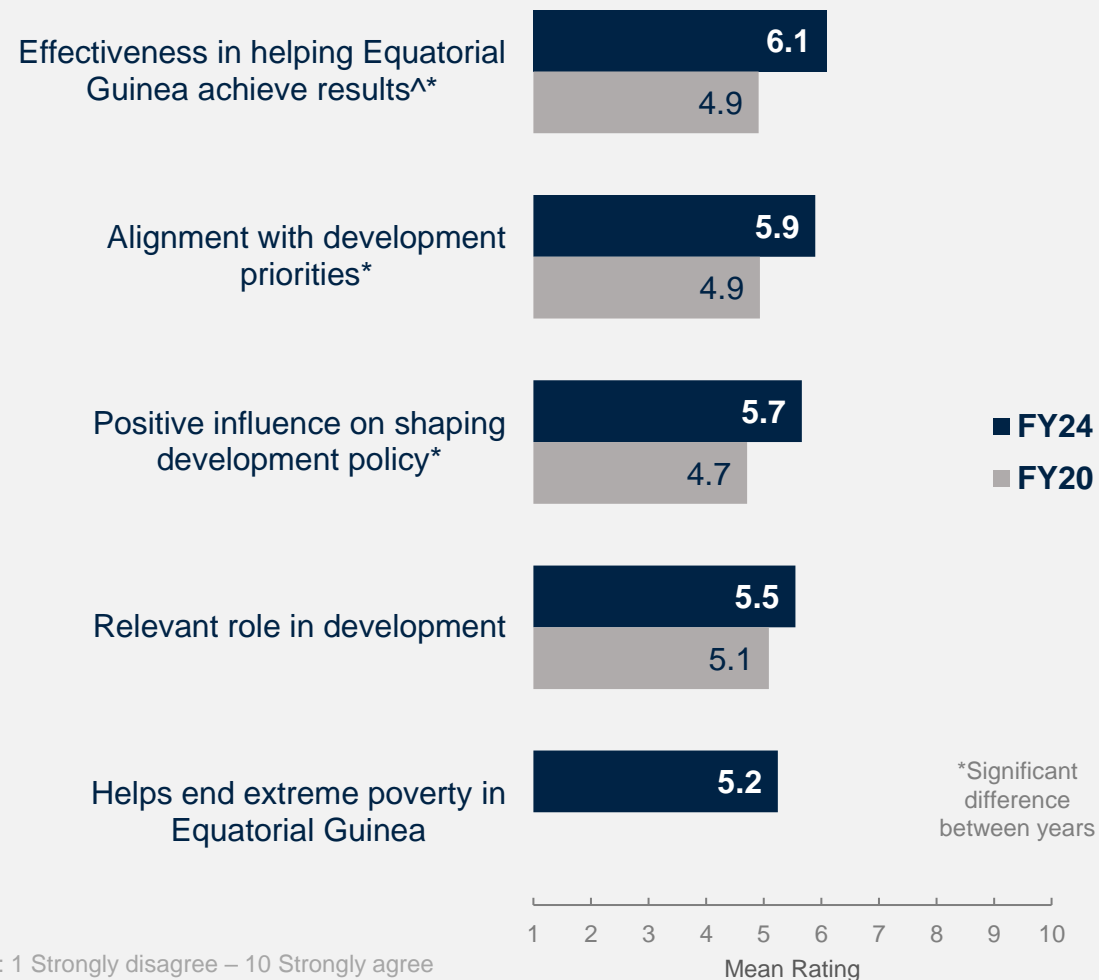
WORLD BANK GROUP



In your opinion, what is the most important thing the WBG could do to increase its effectiveness in Equatorial Guinea? (N=183)

Ratings for Key Performance Indicators

Respondents gave the highest ratings for the WBG's **effectiveness** in helping Equatorial Guinea achieve results, significantly improved compared to FY20 survey results. The ratings of the WBG's **alignment** with development priorities and its **positive influence** on shaping development policy in Equatorial Guinea also significantly increased. Even though most ratings have improved in FY24, they remain rather moderate.

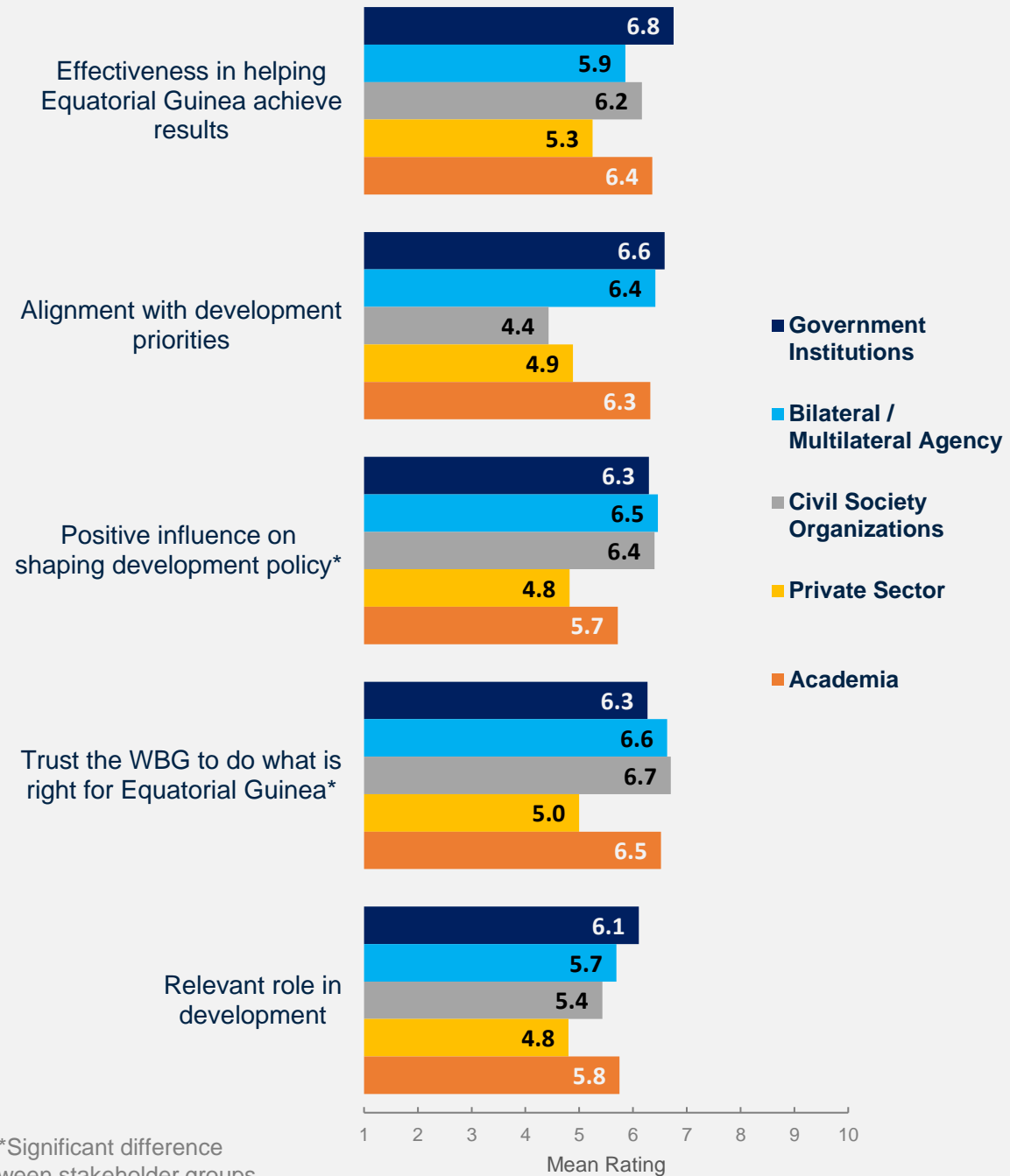


The WBG currently plays a relevant role in development in Equatorial Guinea. Scale: 1 Strongly disagree – 10 Strongly agree
 The WBG's work is aligned with what I consider the development priorities for Equatorial Guinea. Scale: 1 Strongly disagree – 10 Strongly agree
 The WBG has a positive influence on shaping the development policy in Equatorial Guinea. Scale: 1 Strongly disagree – 10 Strongly agree
 How effective is the WBG in helping Equatorial Guinea achieve development results? Scale: 1 Not effective at all – 10 Very effective
 The WBG's work helps end poverty in Equatorial Guinea. Scale: 1 Strongly disagree – 10 Strongly agree
[^]Compared to a mean score of the two questions asked in FY20: "Overall, please rate your impression of the WBG's effectiveness in Equatorial Guinea. Scale: 1 Not effective at all – 10 Very effective; To what extent does the WBG's work help to achieve development results in Equatorial Guinea? Scale: 1 To no degree at all – 10 To a very significant degree

Stakeholders from the Private Sector Have More Critical Perceptions of the WBG

Comparisons of ratings for key performance indicators between stakeholder groups show that respondents from **government institutions** have the highest ratings for the WBG's work across most KPIs. Respondents from **bilateral/multilateral agencies** are also relatively positive. Meanwhile, respondents from **the private sector** tended to be more critical of the WBG's work.

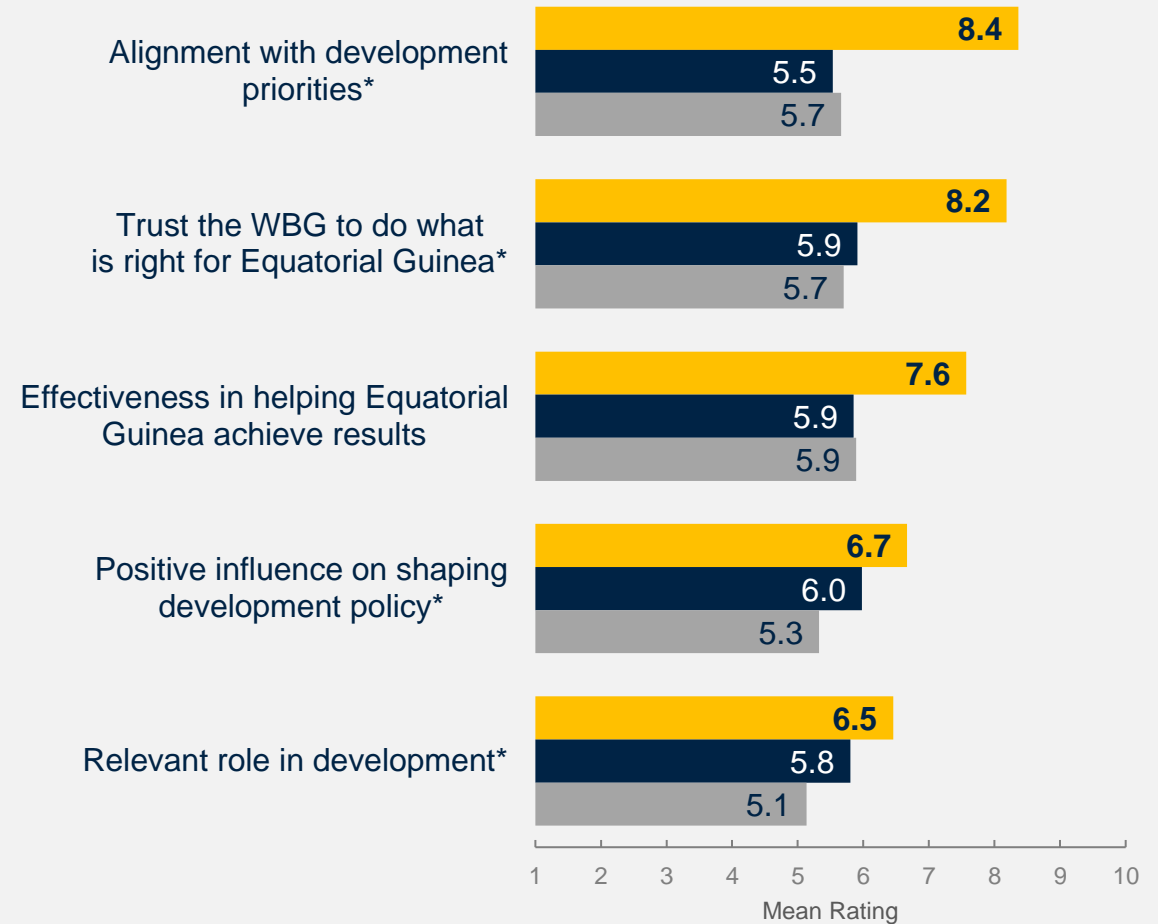
Respondents from **civil society organizations** reported the lowest ratings of the WBG's **alignment** with development priorities.



Familiarity Leads to More Positive Perceptions

Comparing ratings of key performance indicators among respondents highly familiar with the WBG (ratings of 8-10 on a 10-point scale) and those with little familiarity with the WBG (ratings of 1-4 on a 10-point scale), one can see that the respondents with high familiarity of the WBG tended to have more positive perceptions regarding the WBG and its work, whereas the ratings are consistently lower between those with some familiarity and low familiarity.

Meaningful engagement and outreach can continue to increase positive perceptions.



How familiar are you with the work of the WBG in Equatorial Guinea?

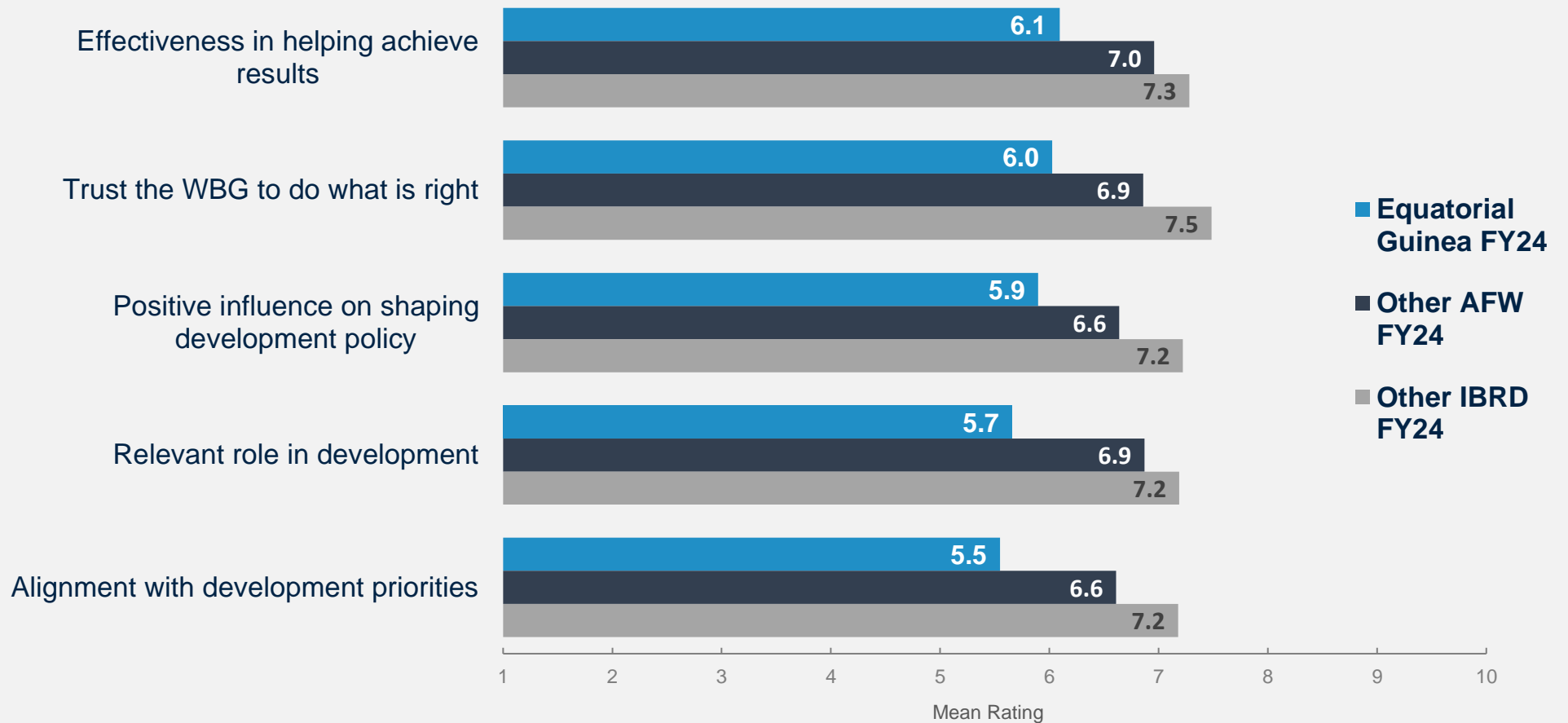
■ High Familiarity (8-10) ■ Some Familiarity (5-7) ■ Low Familiarity (1-4)



How much do you trust the WBG to do what is right for Equatorial Guinea? Scale: 1 Not at all – 10 Very much
 How effective is the WBG in helping Equatorial Guinea achieve development results? Scale: 1 Not effective at all – 10 Very effective
 The WBG currently plays a relevant role in development in Equatorial Guinea. Scale: 1 Strongly disagree – 10 Strongly agree
 The WBG has a positive influence on shaping the development policy in Equatorial Guinea. Scale: 1 Strongly disagree – 10 Strongly agree
 The WBG's work is aligned with what I consider the development priorities for Equatorial Guinea. Scale: 1 Strongly disagree – 10 Strongly agree

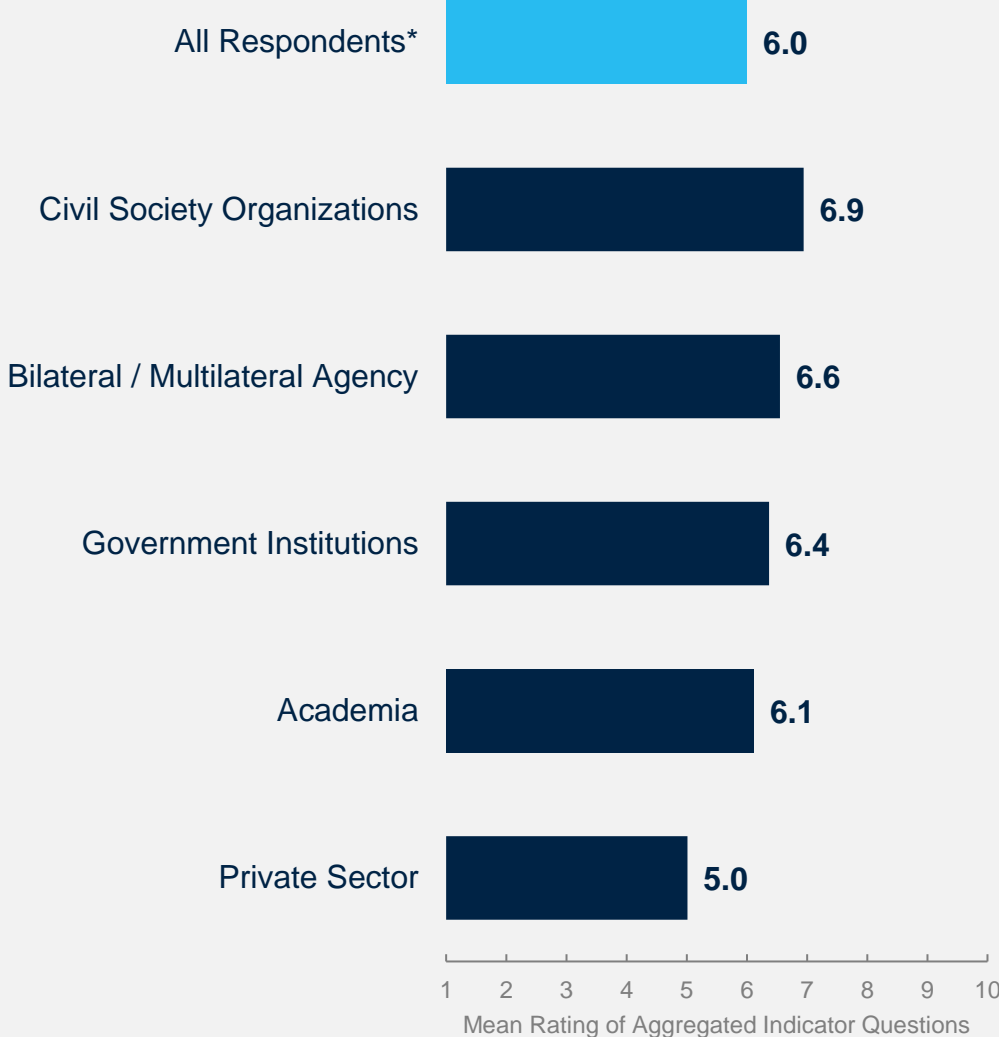
*Significant difference between levels of familiarity

Equatorial Guinea's Key Performance Indicators are Lower than those of Other Countries in Western and Central Africa and Other IBRD Countries Surveyed in FY24



Stakeholder Trends Across Performance Indicators

Respondents from civil society organizations had the highest mean rating across the aggregated responses to the seventeen COS indicator questions, whereas respondents from the private sector had significantly lower ratings.



*Significant difference between stakeholder groups

World Bank Group's Support for Development Areas

"At the level of our country, Equatorial Guinea, it would be important for the WBG to support the private sector in promoting employment so that at least each family member can solve their household's problems.

- Promoting education and health and strengthening the Primary Health Care program to provide quality and affordable medical services for everyone."

(Bilateral / Multilateral Agency Respondent)



WORLD BANK GROUP



In your opinion, what is the most important thing the WBG could do to increase its effectiveness in Equatorial Guinea? (N=183)

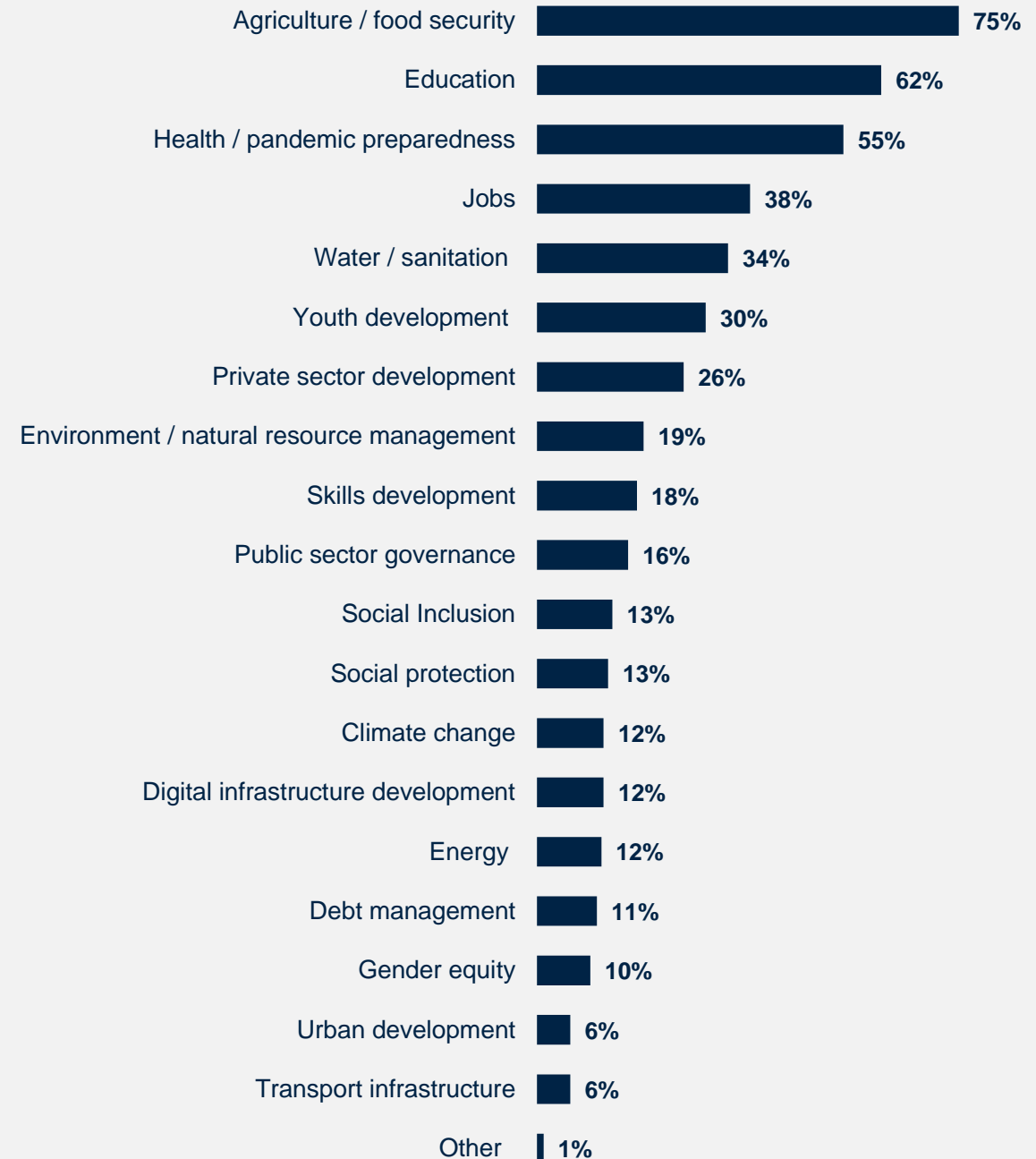
Development Areas for WBG Focus

Similar to FY20, stakeholders in this year’s survey wanted the WBG to focus its resources on **agriculture/food security, education, and health**. **Agriculture** has notably grown as a priority in FY24, with only 19% selecting it in FY20. **Water/sanitation** has gained significant prominence, increasing from 9% in FY20 to 34% in FY24.

In your opinion, what is the most important thing the WBG could do to help increase its effectiveness in Equatorial Guinea?

“Considering that oil products are limited, it is necessary to strengthen the agricultural sector for self-sufficiency and the health sector because without health there is no development, the education sector to strengthen capacity and the environmental sector to improve the protection of our forests, biodiversity and combat the adverse effects of climate change, supporting the sector to market forest carbon credits.” (Government Institutions Respondent)

“In my opinion, to increase its effectiveness, it should work more in the education sector, agriculture and food security, youth development...” (Academia Respondent)



Which areas should the WBG prioritize to have the most impact on development results in Equatorial Guinea? (Select up to 5) (Percentage of Respondents, N=252)

Effectiveness of WBG's Support for Statistical System Development

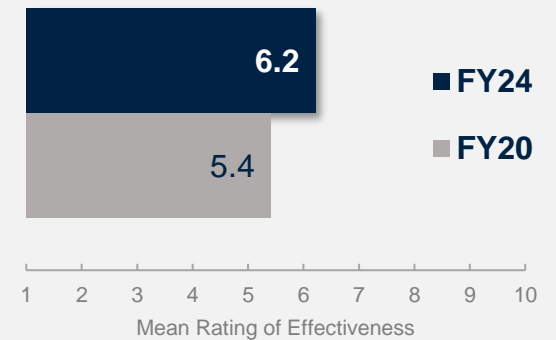
The WBG's national statistical system development work received a significantly higher effectiveness rating in FY24 than in FY20.

In your opinion, what is the most important thing the WBG could do to help increase its effectiveness in Equatorial Guinea?

“Focus on the national statistical system and obtain a bilateral agreement for its proper functioning.”
(Civil Society Organization Respondent)

“Analyze and produce timely statistical data that may favor the country's development.”
(Private Sector Respondent)

Effectiveness of the national statistical system development: supporting the country's capacity to produce timely and accurate statistical data*



*Significant difference between years



World Bank Group's Engagement on the Ground in Equatorial Guinea

“Collaborate with regional bank entities to obtain the results of the country's good development.”
(Civil Society Organization Respondent)



WORLD BANK GROUP



In your opinion, what is the most important thing the WBG could do to increase its effectiveness in Equatorial Guinea? (N=183)

The WBG Increasingly Seen as an Effective Partner

Although still rather moderate, respondents' perceptions of the WBG as a development partner in FY24 have improved significantly. They see the WBG as a more responsive, accessible, open, and flexible long-term partner in the country.

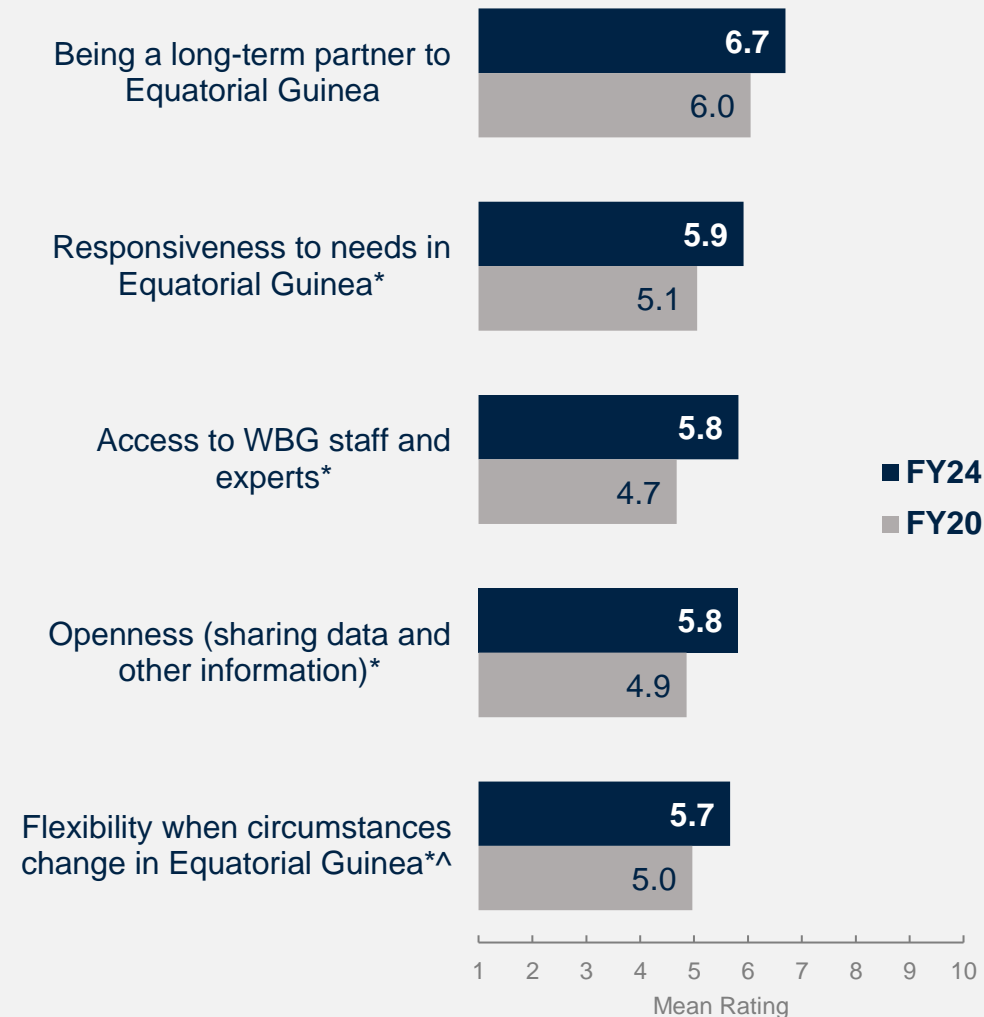
In your opinion, what is the most important thing the WBG could do to increase its effectiveness in Equatorial Guinea?

“The most important thing is to elevate bilateral ties to a comprehensive strategic cooperation partnership for the country's development.”

(Government Institutions Respondent)

“Building relationships with the productive and social sectors of the country. Promoting local entrepreneurship and encouraging initiative.”

(Government Principal Respondent)



To what extent is the WBG an effective development partner in terms of the following?

Scale: 1 To no degree at all – 10 To a very significant degree

^Compared to the mean of institutional flexibility and flexibility to changes in the country context asked in FY20.

*Significant difference between years

The WBG Collaborates Effectively with the National Government and Other Donors

Perceptions of the WBG’s collaboration with various stakeholder groups in Equatorial Guinea have improved significantly. The WBG received the highest ratings for its collaboration with the national government and other donors and development partners.

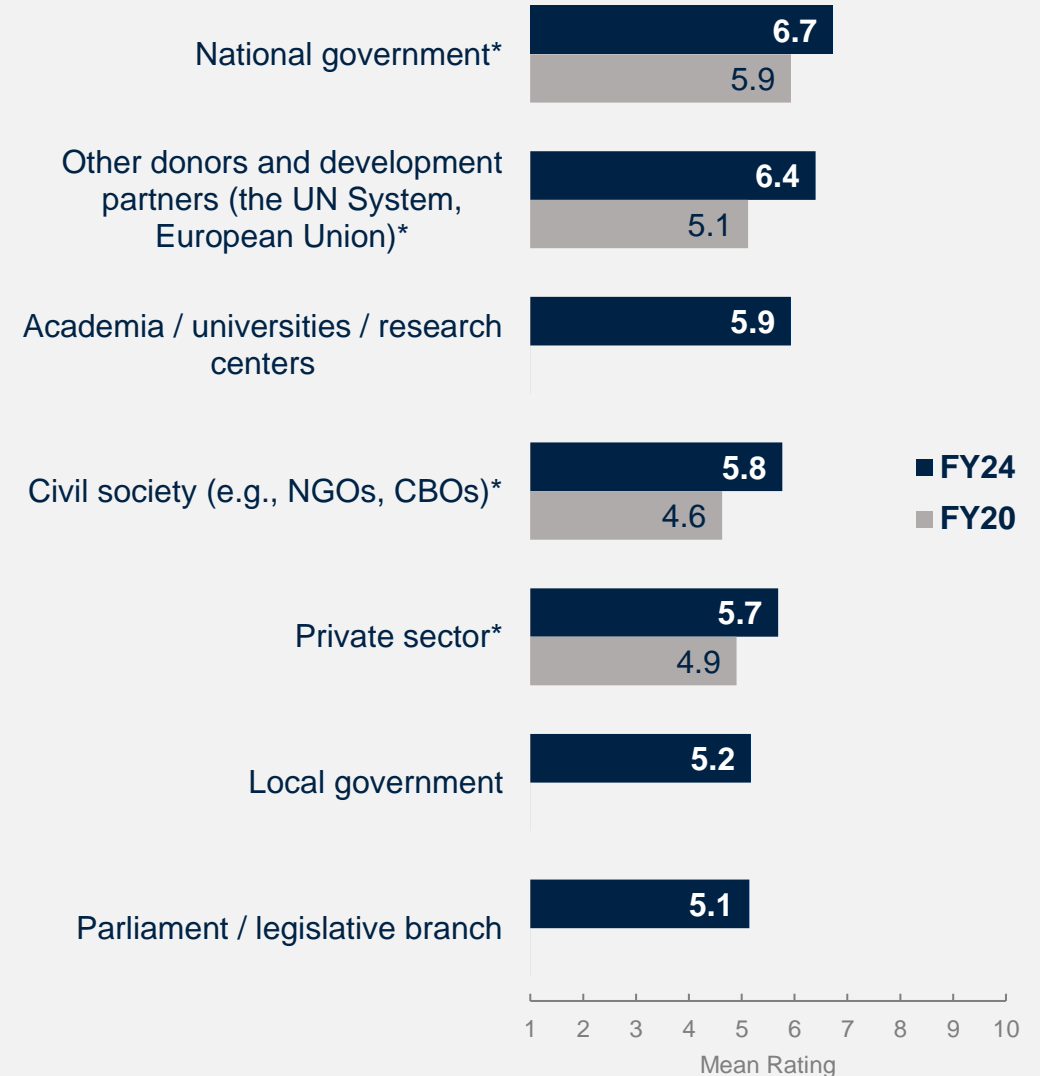
Collaboration ratings with civil society and the private sector have improved significantly compared to FY20, although they remain relatively moderate.

Respondents gave the lowest ratings for the WBG’s collaboration with local government and the parliament/legislative branch.

In your opinion, what is the most important thing the WBG could do to increase its effectiveness in Equatorial Guinea?

“The WBG should implement new reform implementation strategies and bilateral collaborative approaches to improve the country’s economic situation.”

(Civil Society Organization Respondent)



*Significant difference between years

To what extent is the WBG an effective development partner in Equatorial Guinea, in terms of collaborating with the following groups? Scale: 1 To no degree at all – 10 To a very significant degree

Stakeholders Want the Bank to Collaborate More with Academia and the Private Sector

Respondents in this year’s survey indicated that the WBG should collaborate more with **academia** and **the private sector**, in addition to its partnership with the national government.

In your opinion, what is the most important thing the WBG could do to increase its effectiveness in Equatorial Guinea?

“The rural areas should be reached in order to witness their main needs and contribute to their solution. Advise the youth, guiding them to good terms.”

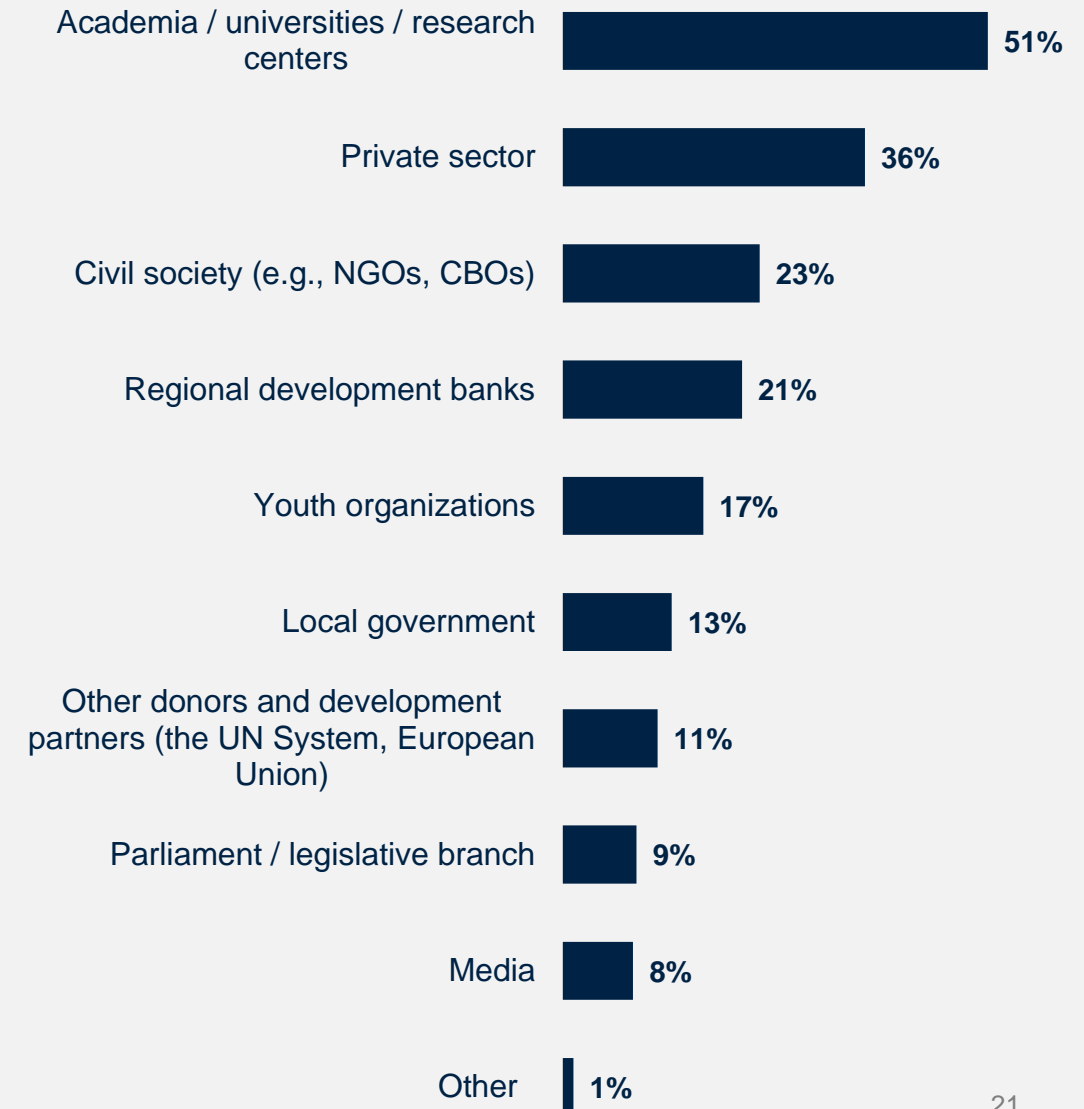
(Private Sector Respondent)

“Make more visible and active collaboration with the civil society, more presence in the country, and disseminate its knowledge”

(Academia Respondent)

“Collaborating more with the education sector, universities, research centers, media (television, radio, written press and digital press).”

(Government Institutions Respondent)



In addition to its partnership with the national government, which of the following should the WBG collaborate with more to have greater impact in Equatorial Guinea? (Select up to 2) (Percentage of Respondents, N=239)



World Bank Group's Knowledge Work

“To increase its effectiveness, it should provide technical support to the government of EG to implement structural reforms. This could include advising in areas such as economic management, governance, and sustainable development. Regarding financial support, mechanisms should be explored to provide financial assistance to the government to promote projects and programs that foster social and economic development in the country. They should also consider emphasizing digital as a strategic area for EG. In the GBM report on mobile, affordability, and quality, broadband digital penetration could be boosted so that the country benefits, as well as enhancing infrastructure.”

(Civil Society Organization Respondent)



WORLD BANK GROUP



In your opinion, what is the most important thing the WBG could do to increase its effectiveness in Equatorial Guinea? (N=183)

Technical Assistance and Capacity Development Considered the Bank's Greatest Value

In your opinion, what is the most important thing the WBG could do to increase its effectiveness in Equatorial Guinea?

“Increase technical assistance through training programs for civil servants and the private sector. More technical and financial assistance support to NGOs.”

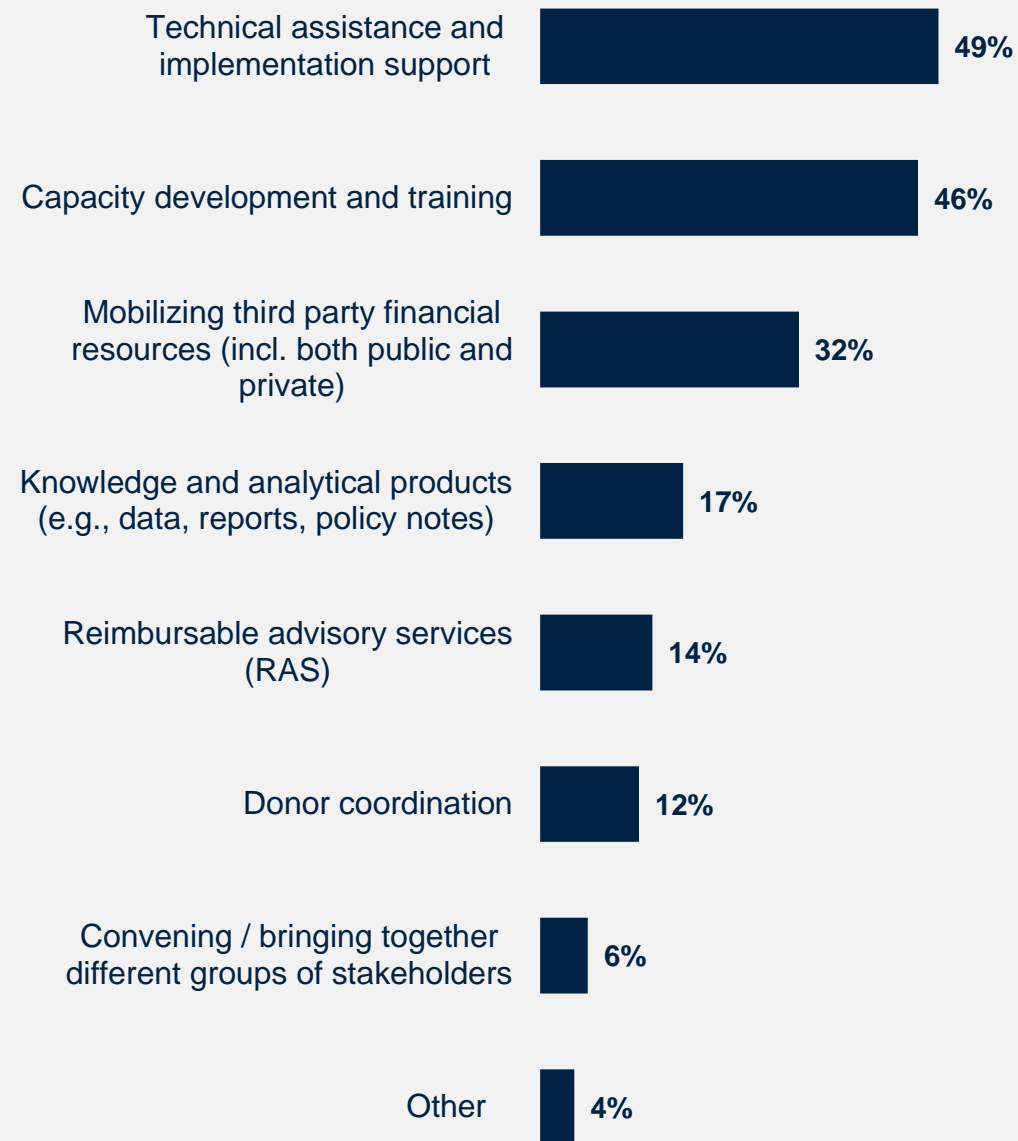
(Government Institutions Respondent)

“Financial assistance in the health, agriculture, and environmental sanitation sectors. Support for training and capacity building programs for teachers and sanitation workers.”

(Academia Respondent)

“The WBG could provide more assistance to the E.G. in HR training, eradicate poverty, to grant credits to entrepreneurial sectors willing to work towards a developed country in all areas.”

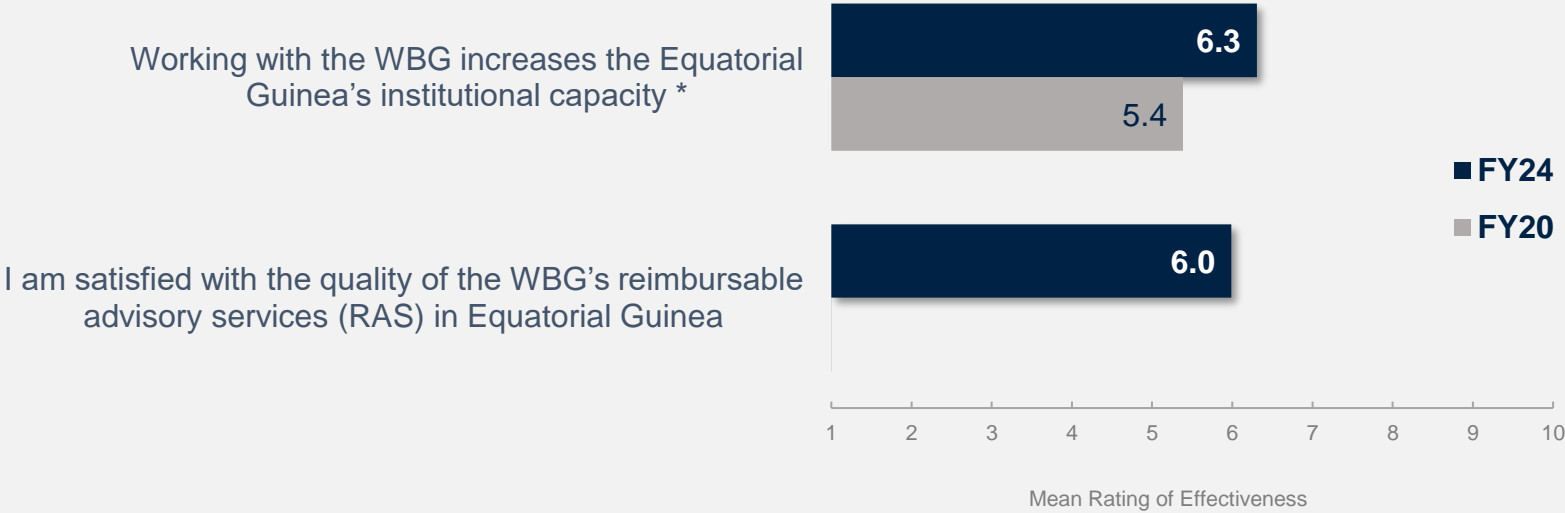
(Local Government Respondent)



Which WBG instruments do you VALUE the most in Equatorial Guinea? (Select up to 2)
(Percentage of Respondents, N=241)

Collaborating with the WBG Strengthened the Country's Institutional Capacity

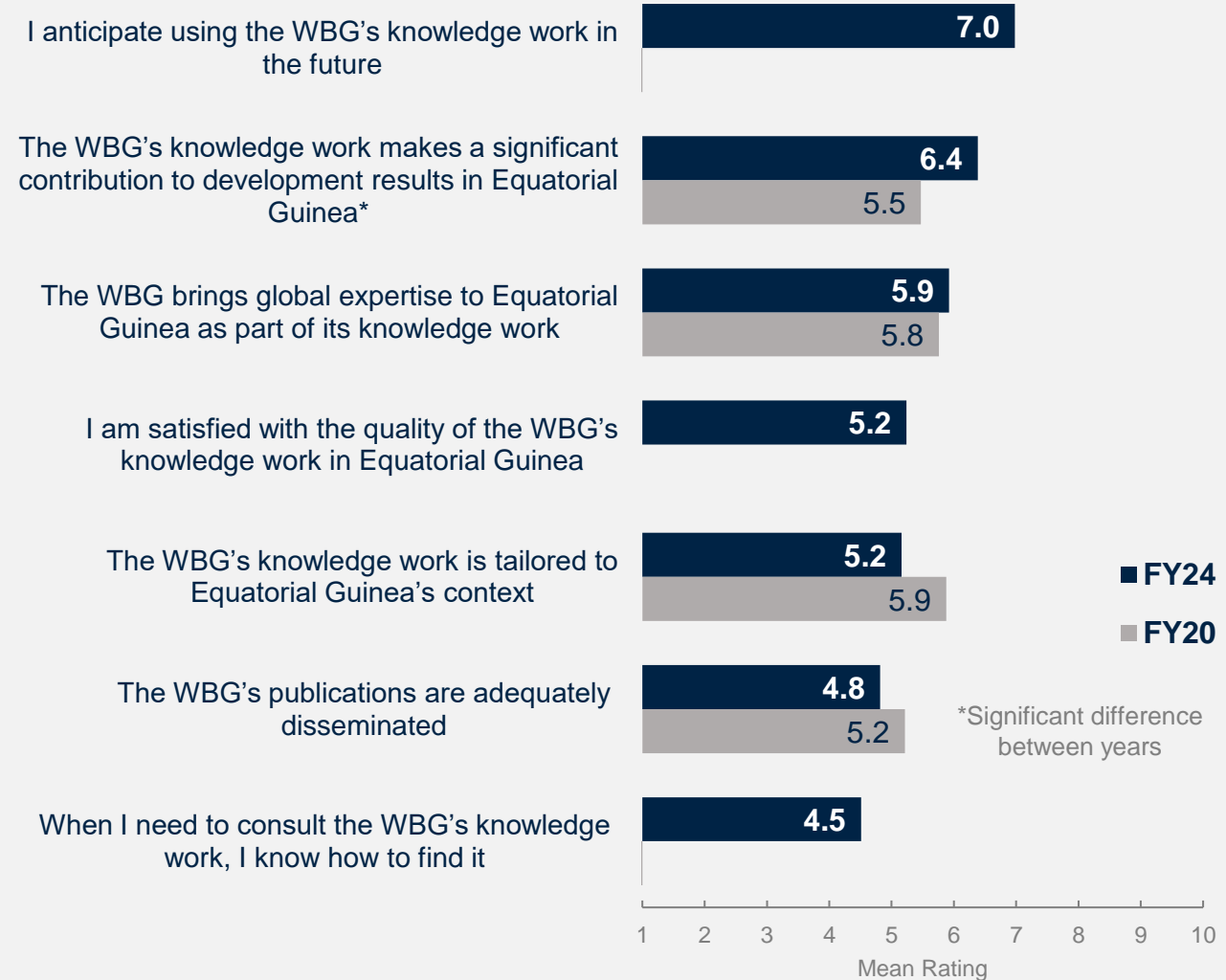
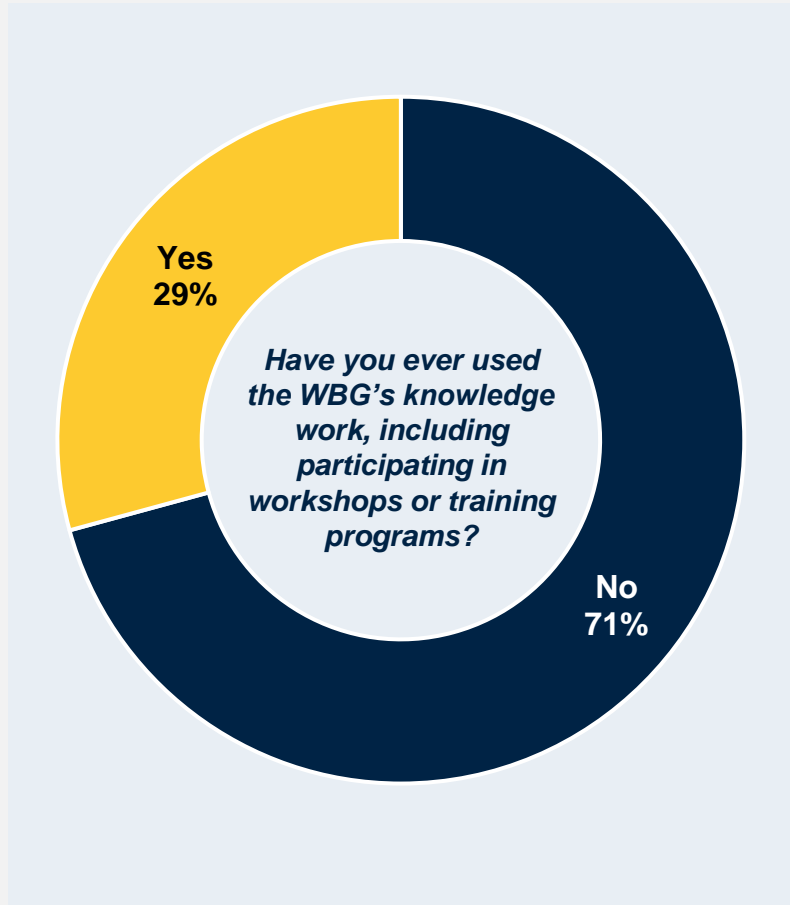
Perceptions that working with the WBG increases Equatorial Guinea's institutional capacity have improved significantly compared to FY20. Respondents are moderately satisfied with the quality of the WBG's reimbursable advisory services in Equatorial Guinea.



*Significant difference between years



29% of Respondents Used the WBG's Knowledge Work, Most Recognize Its Contribution to Development Results



Have you ever used the WBG's knowledge work, including participating in workshops or training programs? (Percentage of Respondents, N=260)

To what extent do you agree with the following statements? Scale: 1 Strongly disagree – 10 Strongly agree

How significant a contribution do you believe the WBG's knowledge work makes to development results in Equatorial Guinea?

Scale: 1 Not significant at all – 10 Very significant ^Compared to "Source of relevant information on global good practices" asked in FY20.

The Future Role of the World Bank Group in Equatorial Guinea

“Work with the private sector, education, civil society, and above all create an entity at the local level to the use or management that the Government makes of the WBG financial resources.”

(Government Institutions Respondent)

“To analyze the real needs that exist in the country and to rigorously supervise any activity that is carried out (in the management that is involved).”

(Academia Respondent)



WORLD BANK GROUP



In your opinion, what is the most important thing the WBG could do to increase its effectiveness in Equatorial Guinea? (N=183)

How Can the WBG Increase its Effectiveness? Open Ended Responses

Focus on education and youth development, provide tailored projects, engage with local stakeholders, and increase awareness of the WBG's work



Focus Area
35%*

- Emphasize education and strengthen the agricultural sector and healthcare systems; promote environmental sustainability and climate resilience.
- Foster private sector growth and youth development. Provide training and technical support to young people.

Knowledge
18%

- Provide capacity-building programs and training to improve local capacity and long-term development.
- Collaborate with stakeholders to generate and disseminate data that supports sustainable development.
- Conduct tailored analysis and timely reports and provide practical advice to support the government.

Engagement
16%

- Engage with local government, civil society, and other partners to ensure the projects reflect the country's realities.
- Strengthen ties with regional banks and national institutions to support effective implementation and oversight of projects

In your opinion, what is the most important thing the World Bank Group could do to increase its effectiveness in Equatorial Guinea? (N=183)

*All percentages are counted based on the total number of topics mentioned by the respondents; individual comments could be counted multiple times depending on the number of topics they cover.

How Can the WBG Increase its Effectiveness? Open Ended Responses

Focus on education and youth development, provide tailored projects, engage with local stakeholders, and increase awareness of the WBG's work



Communication
9%

- Increase awareness and visibility using diverse channels like radio and social media to engage stakeholders.
- Organize regular meetings/workshops to educate the general population on WBG's work. Share updates on programs.

Financial support
9%

- Provide support to SMEs, particularly youth and local enterprises, to create jobs and reduce poverty.
- Mobilize the resources and explore affordable mechanisms to support development goals.

Operational Effectiveness
8%

- Tailor WBG programs and knowledge products to the specific context of Equatorial Guinea.
- Focus on productivity improvement. Involve the local community to maximize the impact of development.

Results
5%

- Emphasize the need for transparent policies, reporting, and monitoring of projects.
- Establish local entities to manage and oversee the use of resources effectively.

Communication and Outreach

“The World Bank Group should make itself known through the media. It should also reach out directly to the population through young people (youth initiatives, associations, NGOs, etc.).”

(Civil Society Organization Respondent)

“First of all, to raise awareness among citizens about the WBG’s work, as many are unaware of its existence in our country.”

(Private Sector Respondent)



WORLD BANK GROUP



In your opinion, what is the most important thing the WBG could do to increase its effectiveness in Equatorial Guinea? (N=183)

Events and e-Newsletter were the Most Preferred Ways for Receiving WBG Communication

Respondents most preferred to receive the WBG's communications through **events/conferences/seminars/workshops** (in person or online), **e-newsletters**, and **direct contact with staff**. There is a significant difference in stakeholders' preferences for e-newsletters.

| | Preferred WBG Channel | | | | | |
|--|-----------------------|-------------------------|---------------------------------|-----------------------------|----------------|----------|
| | All Respondents | Government Institutions | Bilateral / Multilateral Agency | Civil Society Organizations | Private Sector | Academia |
| Event / conference / seminar / workshop (in person or online)* | 53% | 66% | 42% | 39% | 48% | 56% |
| e-Newsletters* | 40% | 48% | 58% | 43% | 27% | 37% |
| Direct contact with staff (e.g., in person, virtually, phone, email) | 38% | 38% | 26% | 30% | 41% | 35% |
| Social media (e.g., Facebook, Twitter) | 28% | 19% | 26% | 35% | 38% | 26% |
| Direct messaging (e.g., WhatsApp, Telegram, Viber) | 23% | 13% | 26% | 26% | 24% | 30% |
| Other | 2% | 4% | 0% | 4% | 2% | 0% |

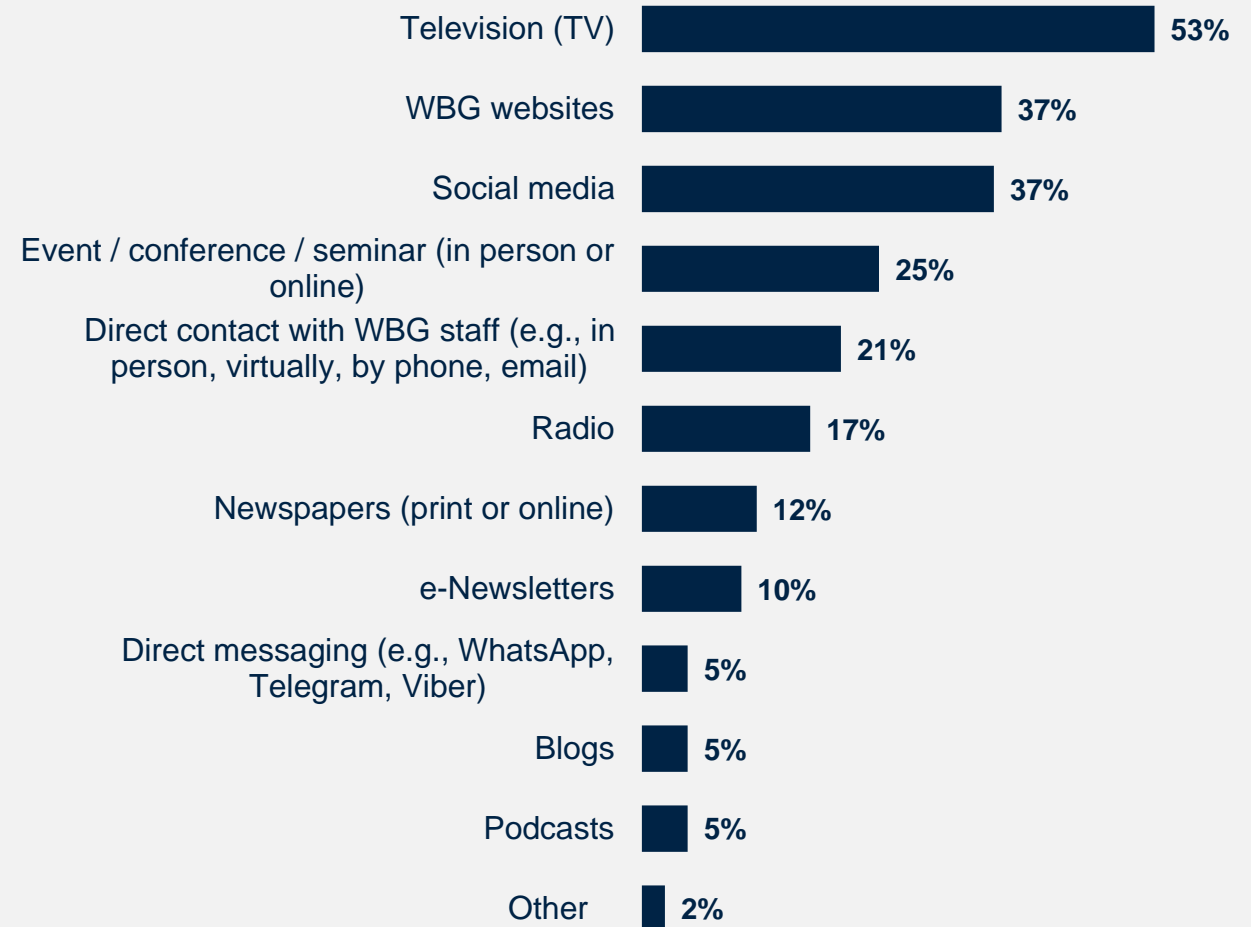
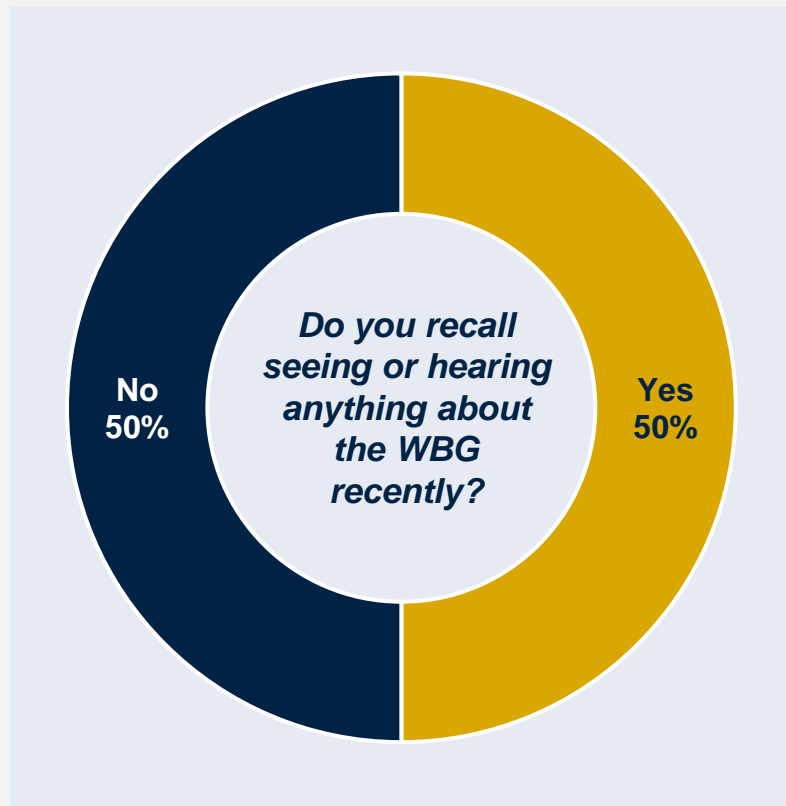


How would you prefer to receive communication from the WBG? (Select up to 2)
(Percentage of Respondents, N=126)

*Significant difference between stakeholder groups

50% of Respondents Recalled Information about the WBG Recently, Most Often Through Television

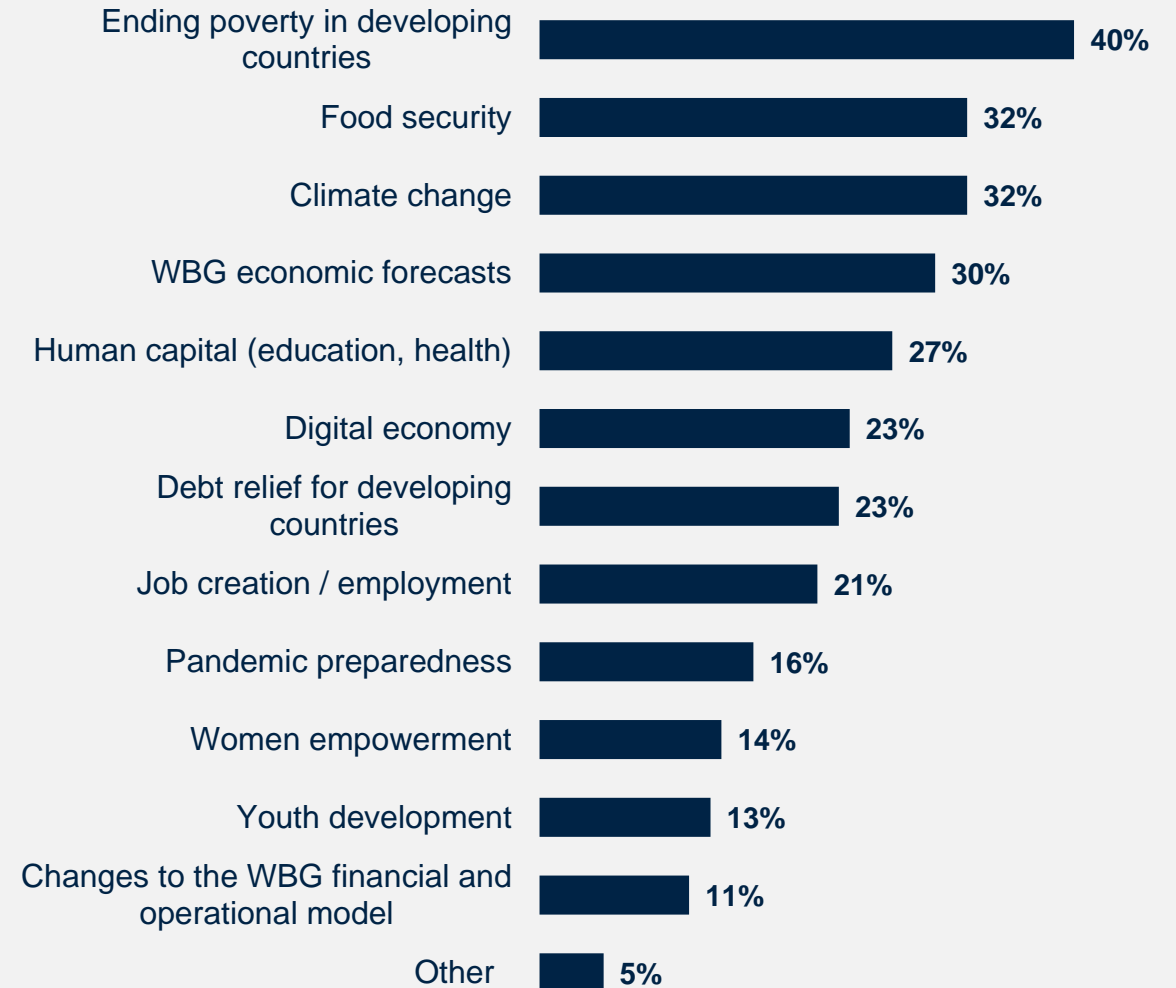
50% of respondents recalled hearing or seeing something about the WBG recently. Respondents most often reported seeing/hearing about the WBG on television, WBG websites, and social media. Significantly more respondents from civil society organizations recalled messages were through WBG websites (70%) and blogs (30%).



WBG's Work on Ending Poverty was the Most Commonly Recalled Topic

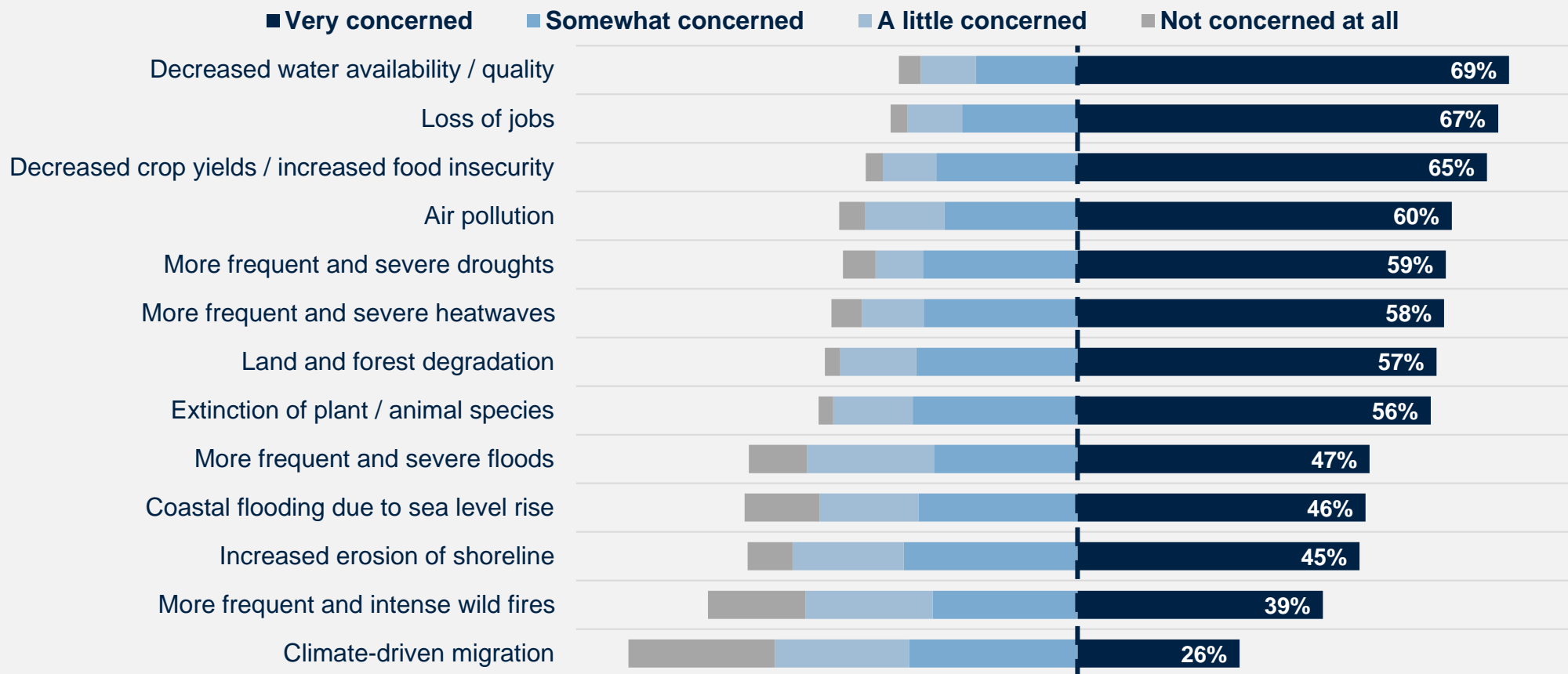
Respondents most frequently recalled WBG's work or research on **ending poverty in developing countries**, followed by WBG's work on **food security, climate change**, and **WBG's economic forecasts**.

- Respondents from civil society organizations and academia were more likely to recall topics on job creation (60% and 45%, respectively).



Climate Change Communications can be More Impactful when Related to Stakeholders' Top Concerns: Decreased Water Availability / Quality

69% of respondents were **very concerned** about **decreased water availability/quality** regarding the potential impacts of climate change in Equatorial Guinea. **Loss of jobs** followed closely. **Food insecurity** was also of great concern to respondents. These key areas of concern should be considered to make communications about climate change more impactful.

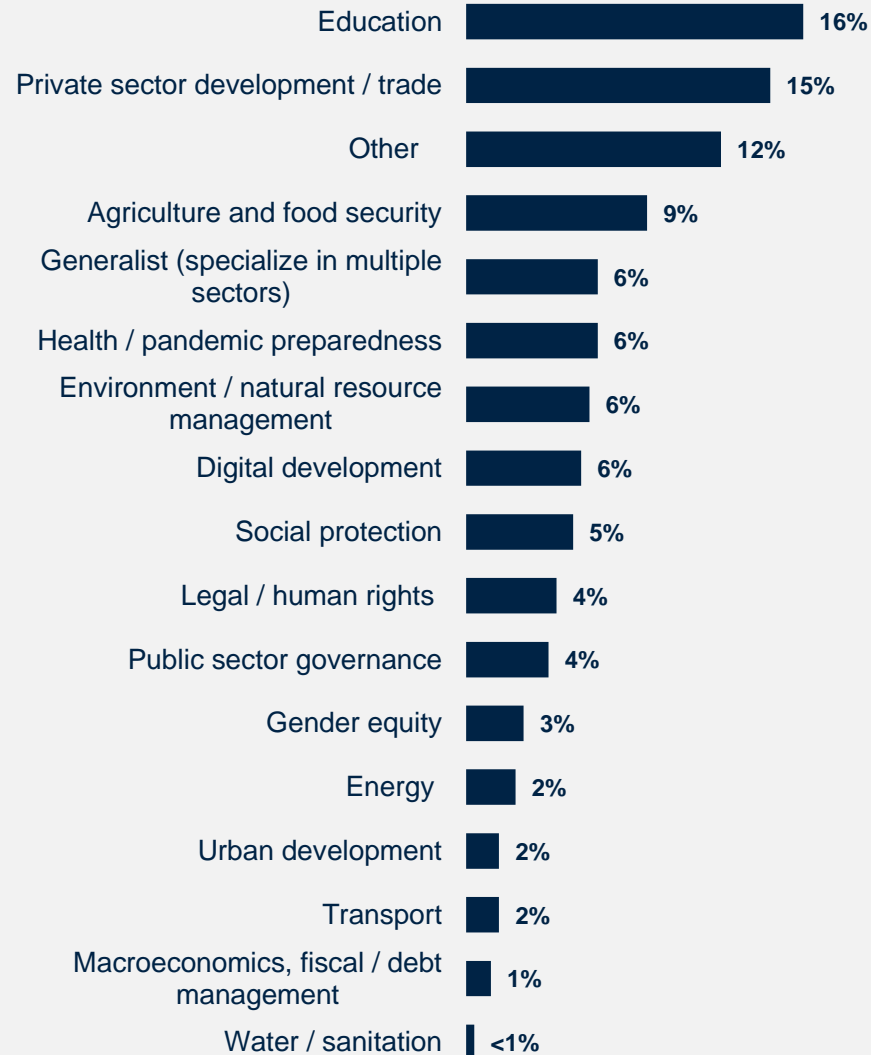


Sample Demographics and Detailed Methodology

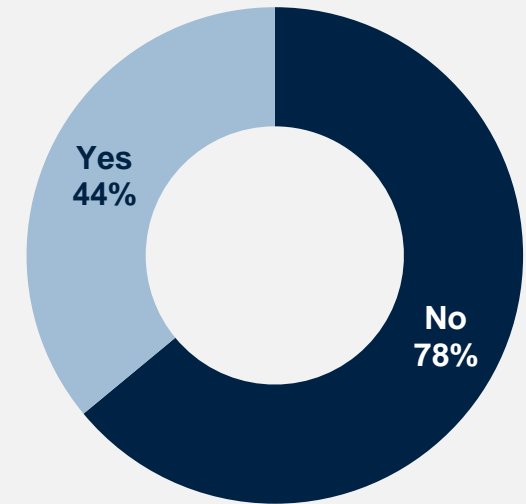


Sample Demographics

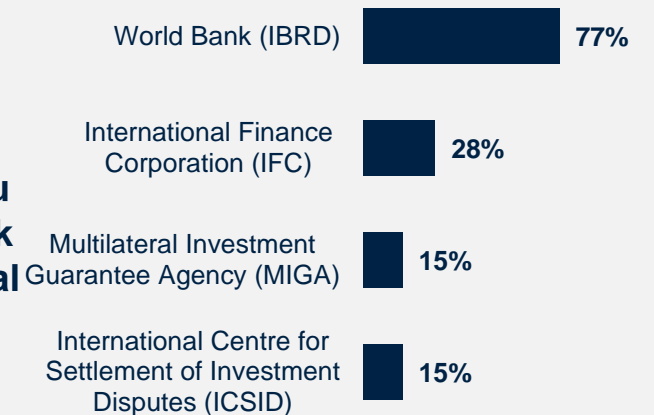
What is the primary specialization of your work? (N=251)



Do you collaborate/work with the World Bank Group (WBG) in Equatorial Guinea? (N=244)

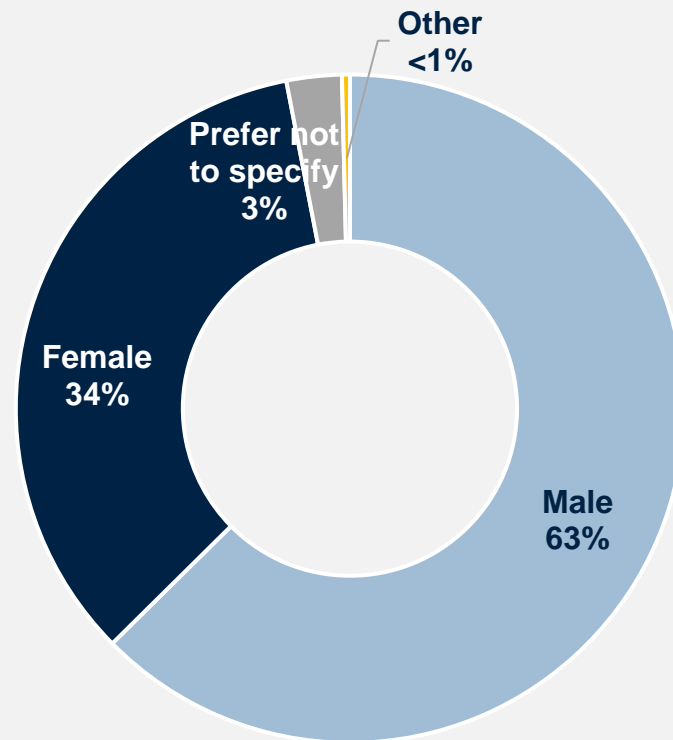


Which of the following WBG agencies do you collaborate/work with in Equatorial Guinea? (N=39)

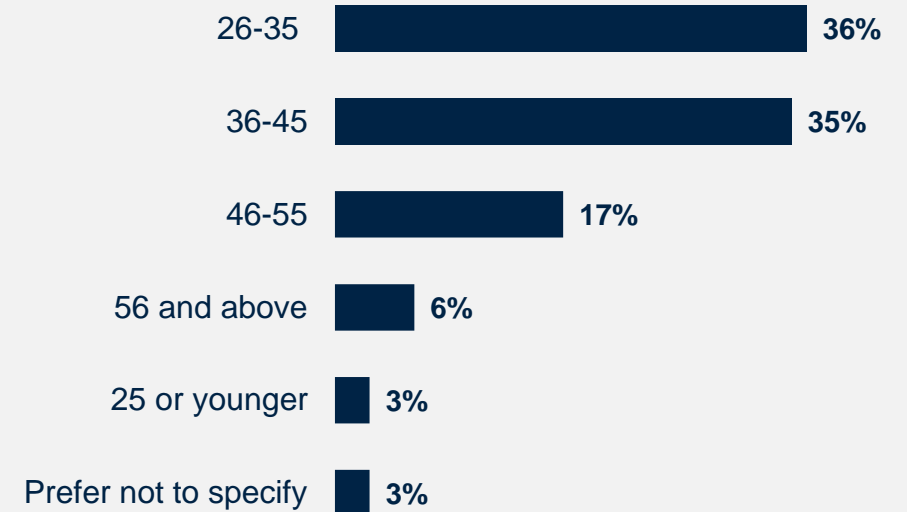


Sample Demographics (continued)

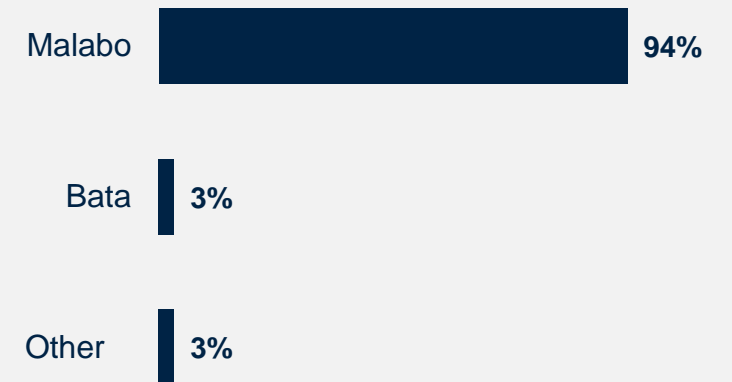
What is your gender?
(N=262)



What's your age? (N=263)



Which best represents your geographic location? (N=260)



Detailed Methodology

From **May 2024 to June 2024**, a total of 400 stakeholders in Equatorial Guinea were invited to provide their opinions on the WBG’s work by participating in a Country Opinion Survey (COS). A list of potential participants was compiled by the WBG country team and the field agency. Participants were drawn from the Offices of the Prime Minister, Minister, and Parliament, government institutions, local governments, bilateral or multilateral agencies, the private sector, civil society, academia, and the media.

Of these stakeholders, **267 participated in the survey (67% response rate)**. Respondents completed the questionnaire via an online platform.

This year’s survey results were compared to the FY20 Survey, which had a response rate of 37% (N=165).

Comparing responses across Country Surveys reflects changes in attitudes over time, but also changes in respondent samples, changes in methodology, and changes to the survey instrument itself. To reduce the influence of the latter factor, only those questions with similar response scales/options were analyzed. This year’s survey saw a greater outreach to and/or response from the private sector and academia but a decrease from the government institutions. These differences in stakeholder composition between the two years should be considered when interpreting the results of the past-year comparison analyses.

Key statistically significant findings (tested at the research standard of $p < .05$) are noted throughout the report.

Breakdowns for individual questions by stakeholder group can be found in the “Equatorial Guinea COS FY24 Appendices with data breakdowns.xlsx” file published in the WBG Microdata Library, along with the survey microdata and this report.

| Percentage of Respondents | FY 2020 | FY 2024 |
|--|------------|------------|
| Government Principals: Office of the Prime Minister, Minister, Parliamentarian | 11% | 3% |
| Government Institutions: Employee of a Ministry, Department, Project Implementation Unit, Independent Government Institution, Judiciary, State-Owned Enterprise | 37% | 33% |
| Local Government | 3% | 0% |
| Bilateral/Multilateral Agency: Embassy, Development Organization, Development Bank, UN Agency | 2% | 7% |
| Civil Society Organization: Local and regional NGOs, Community-Based Organization, Private Foundation, Professional/Trade Association, Faith-Based Group, Youth Group | 11% | 9% |
| Private Sector: Private Company, Financial Sector Organization, Private Bank | 14% | 26% |
| Academia / Research Center | 8% | 16% |
| Media | 0% | 3% |
| Other | 15% | 3% |
| Total Number of Respondents* | 143 | 266 |



What is your primary professional affiliation? (Select only 1 response)

*Not all respondents provided information about their professional affiliation. Therefore, the total number of respondents listed in the table is lower than the N reported in the methodology.

Indicator Questions

Every country that engages in the Country Opinion Survey (COS) must include specific indicator questions, several of which are aggregated for the World Bank Group's annual Corporate Scorecard and are highlighted in red below.

A1_5. How much do you trust the World Bank Group to do what is right for Equatorial Guinea? Scale: 1 Not at all – 10 Very much

A2. How effective is the World Bank Group in helping Equatorial Guinea achieve development results? Scale: 1 Not effective at all – 10 Very effective

To what extent do you agree with the following statements? Scale: 1 Strongly disagree – 10 Strongly agree

A3. The WBG currently plays a relevant role in development in Equatorial Guinea.

A4. The WBG's work is aligned with what I consider the development priorities for Equatorial Guinea.

A5. The WBG has a positive influence on shaping development policy in Equatorial Guinea.

A6. The WBG's work helps end poverty in Equatorial Guinea

To what extent is the WBG an effective development partner in terms of each of the following? Scale: 1 To no degree at all – 10 To a very significant degree

C1_1. Responsiveness to needs in Equatorial Guinea

C1_2. Access to WBG staff and experts

C1_3. Flexibility when circumstances change in Equatorial Guinea

C1_5. Being a long-term partner to Equatorial Guinea

To what extent is the WBG an effective development partner in Equatorial Guinea, in terms of collaborating with the following groups?

Scale: 1 To no degree at all – 10 To a very significant degree

C2_1. National Government

C2_4. Private sector

C2_5. Civil society

C2_6. Other development partners

C6. How significant a contribution do you believe the WBG's knowledge work make to development results in Equatorial Guinea?

Scale: 1 Not significant at all – 10 Very significant

To what extent do you agree with the following statements? Scale: 1 Strongly disagree – 10 Strongly agree

C7_1. I am satisfied with the quality of the WBG's knowledge work in Equatorial Guinea.

C7_3. The WBG's knowledge work is tailored to Equatorial Guinea' context.





CountryOpinionSurveys

Thank you

*For more information about this report
or the Country Opinion Survey program,
please contact:*

countrysurveys@worldbankgroup.org

