

SURVEY ON OVERSEAS FILIPINOS 2008



A Report on the Overseas Filipino Workers



REPUBLIC OF THE PHILIPPINES
National Statistics Office
Manila

Survey on Overseas Filipinos 2008

*A Report on the
Overseas Filipino Workers*



REPUBLIC OF THE PHILIPPINES
National Statistics Office
Manila



REPUBLIC OF THE PHILIPPINES

HER EXCELLENCY
PRESIDENT GLORIA MACAPAGAL-ARROYO



NATIONAL STATISTICS OFFICE

CARMELITA N. ERICTA
Administrator

PAULA MONINA G. COLLADO
Deputy Administrator

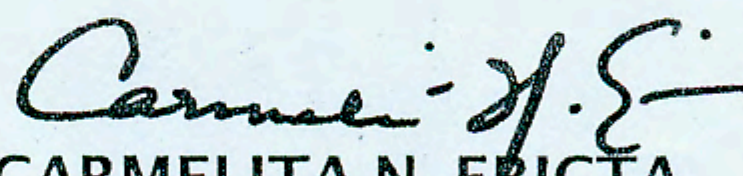
ISSN 0118 – 8623

FOREWORD

This report summarizes the findings of the 2008 Survey on Overseas Filipinos (SOF) undertaken by the National Statistics Office as a rider to October 2008 Labor Force Survey.

The survey was designed to gather national estimates on the number of overseas workers, their socio economic characteristics and other information pertaining to the overseas workers who worked or have worked abroad from April to September 2008. The remittances of the Overseas Filipino Workers (OFWs) in cash or in kind were also accounted for the specified reference period. The SOF data are useful inputs to government planners, migrant advocates, researchers, academes, concerned citizens, and other data users to the formulation of policies and programs for the welfare of the overseas Filipino.

We take this opportunity to acknowledge with gratitude all our Respondents who generously shared their time and provided the needed information about the survey, and all the NSO Central and Field Office personnel for their untiring efforts and dedication for the completion of the survey.


CARMELITA N. ERICATA
Administrator

Manila, Philippines
December 2009

TABLE OF CONTENTS

SUMMARY OF FINDINGS	xi
INTRODUCTION	xiii
Background	xiii
Objectives of the Survey	xiii
Authority of the Survey	xiv
Confidentiality of Information	xiv
Scope of the Survey	xv
Sampling Design.	xv
Concepts and Definitions	xviii
Limitations of the Survey.	xix
HIGHLIGHTS	xxi
TEXTUAL TABLES	xxvii
STATISTICAL TABLES	1
APPENDICES	33
A. The SOF Questionnaire (SOF Form 1)	35
B. The SOF Control Form (SOF Form 2).	37

LIST OF TEXTUAL TABLES

	Title	Page
<i>Data on Overseas Filipino Workers</i>		
A1	Number and Percentage Distribution of Overseas Filipino Workers by Sex and by Region: 2007 and 2008	xxvii
B1	Number and Percentage Distribution of Overseas Filipino Workers by Age Group and by Sex: 2007 and 2008	xxvii
C1	Number and Percentage Distribution of Overseas Filipino Workers by Place of Work and by Sex: 2007 and 2008	xxviii
D1	Number and Percentage Distribution of Overseas Filipino Workers by Major Occupation and by Sex: 2007 and 2008	xxix
E1	Number and Percentage Distribution of Overseas Filipino Workers by Cash Remittance and by Sex: 2007 and 2008.	xxix
F1	Total and Average Remittance in Cash and in Kind of Male and Female Overseas Filipino Workers: 2007 and 2008.	xxx
G1	Total and Average Cash Remittance of Overseas Filipino Workers by Mode of Remittance: 2007 and 2008	xxxi
H1	Total and Average Cash Remittance of Male and Female Overseas Filipino Workers by Place of Work: 2007 and 2008.	xxxi
I1	Total and Average Cash Remittance of Male and Female Overseas Filipino Workers by Major Occupation: 2007 and 2008.	xxxii
<i>Data on Overseas Contract Workers</i>		
A2	Number and Percentage Distribution of Overseas Contract Workers by Sex and by Region: 2007 and 2008	xxxv
B2	Number and Percentage Distribution of Overseas Contract Workers by Age Group and by Sex: 2007 and 2008	xxxv
C2	Number and Percentage Distribution of Overseas Contract Workers by Place of Work and by Sex: 2007 and 2008	xxxvi
D2	Number and Percentage Distribution of Overseas Contract Workers by Major Occupation and by Sex: 2007 and 2008	xxxvii
E2	Number and Percentage Distribution of Overseas Contract Workers by Cash Remittance and by Sex: 2007 and 2008.	xxxvii
F2	Total and Average Remittance in Cash and in Kind of Male and Female Overseas Contract Workers: 2007 and 2008	xxxviii

G2	Total and Average Cash Remittance of Overseas Contract Workers by Mode of Remittance: 2007 and 2008	xxxix
H2	Total and Average Cash Remittance of Male and Female Overseas Contract Workers by Place of Work: 2007 and 2008.	xxxix
I2	Total and Average Cash Remittance of Male and Female Overseas Contract Workers by Major Occupation: 2007 and 2008. . . .	xl

LIST OF STATISTICAL TABLES

	Title	Page
<i>Data on Overseas Filipino Workers</i>		
1	Number and Percentage Distribution of Overseas Filipino Workers by Sex and by Region: 2008	1
2	Number and Percentage Distribution of Overseas Filipino Workers by Age Group, by Sex and by Area: 2008	2
3	Number and Percentage Distribution of Overseas Filipino Workers by Place of Work and by Sex: 2008	3
3A	Number and Percentage Distribution of Overseas Filipino Workers by Place of Work, by Sex and by Area: 2008	4
4	Number and Percentage Distribution of Overseas Filipino Workers by Major Occupation Group, by Sex and by Area: 2008	5
5	Number and Percentage Distribution of Overseas Filipino Workers by Cash Remittance, by Sex and by Area: 2008.	7
6	Total and Average Remittance in Cash and in Kind of Male and Female Overseas Filipino Workers by Area: 2008	8
7	Total and Average Cash Remittance of Overseas Filipino Workers by Mode of Remittance and by Area: 2008	10
8	Number and Percentage Distribution of Overseas Filipino Workers by Type, by Sex and by Area: 2008	11
9	Total and Average Cash Remittance of Male and Female Overseas Filipino Workers by Place of Work: 2008.	12
9A	Total and Average Cash Remittance of Male and Female Overseas Filipino Workers by Place of Work and by Area: 2008	13
10	Total and Average Cash Remittance of Male and Female Overseas Filipino Workers by Major Occupation Group and by Area: 2008.	14
<i>Data on Overseas Contract Workers</i>		
1	Number and Percentage Distribution of Overseas Contract Workers by Sex and by Region: 2008	19
2	Number and Percentage Distribution of Overseas Contract Workers by Age Group, by Sex and by Area: 2008	20

3	Number and Percentage Distribution of Overseas Contract Workers by Place of Work and by Sex: 2008	21
3A	Number and Percentage Distribution of Overseas Contract Workers by Place of Work, by Sex and by Area: 2008	22
4	Number and Percentage Distribution of Overseas Contract Workers by Major Occupation Group, by Sex and by Area: 2008	23
5	Number and Percentage Distribution of Overseas Contract Workers by Cash Remittance, by Sex and by Area: 2008.	25
6	Total and Average Remittance in Cash and in Kind of Male and Female Overseas Contract Workers by Area: 2008	26
7	Total and Average Cash Remittance of Overseas Contract Workers by Mode of Remittance and by Area: 2008	28
8	Total and Average Cash Remittance of Male and Female Overseas Contract Workers by Place of Work: 2008	29
8A	Total and Average Cash Remittance of Male and Female Overseas Contract Workers by Place of Work and by Area: 2008	30
9	Total and Average Cash Remittance of Male and Female Overseas Contract Workers by Major Occupation Group and by Area: 2008	31

SUMMARY OF FINDINGS

- The number of Overseas Filipino Workers (OFWs) who worked abroad at anytime during the period April to September 2008 registered at 2.0 million. Of the total OFWs, 94.0 percent (1.9 million) were Overseas Contract Workers (OCWs) or those with existing work contract abroad.
- The regions with at least 10 percent share to the total OFWs in April 2008 to September 2008 were CALABARZON (18.4%), Central Luzon (14.5%), and National Capital Region (NCR) (14.0%). The combined shares of these regions made up almost half (46.9%) of the total number of OFWs during the period April to September 2008.
- Caraga had the least share of OFW with 1.2 percent.
- There were more male OFWs (51.6%) than female OFWs (48.4%) during the period April to September 2008.
- More than one fourth of the OFWS (25.7%) were in age group 25 to 29 years.
- Saudi Arabia remained to be the favorite destination of OFWs comprising 20.4 percent of the total OFWs who worked abroad in April to September 2008.
- One in every three (32.4%) OFWs in April to September 2008 were laborers or unskilled workers which include domestic helpers, cleaners, or manufacturing laborers.
- OFWs sent a total remittance of P141.9 billion pesos during the period April to September 2008, an increase of 32.1 billion pesos from the estimated remittance of 110.0 billion pesos for the same months in 2007.
- Of the total cash remittance sent for the period April to September 2008, 76.1 percent were through banks, 11.8 percent were through door to door, 4.6 percent were through the agency and or local office, friends and co-workers, and, 7.5 percent through other means.
- OFWs working in Asia, comprising 78.2 percent of all OFWs, sent the biggest cash remittance of 69.9 billion pesos.
- Among occupation groups, OFWs working as laborers or unskilled workers posted the highest cash remittance of 19.5 billion pesos.

INTRODUCTION

A. BACKGROUND

The Survey on Overseas Filipinos (SOF) is a nationwide undertaking that seeks to gather information on Filipino citizens, including overseas workers, who left abroad during the five years preceding the survey, that is, from October 2002 to September 2008. However, all statistics presented in this report pertain only to those Filipinos who worked or have worked abroad anytime during the last six months preceding the survey period (April to September 2008). Data on their remittances, for example, are gathered using the past six months as reference period.

The SOF is conducted every year as a rider survey to the October round of the Labor Force Survey (LFS).

The data collection of the characteristics of overseas workers started in 1982 using a one-page rider questionnaire in the Integrated Survey of Households (ISH) and continued until 1986.

In 1987, during the revision of the ISH Form 2 or the LFS questionnaire, a column indicator for overseas contract workers (OCWs) was added to get the estimate of the number of OCWs. With the increasing demand for information on overseas workers, the Survey on Overseas Workers (SOW) was resumed in 1991 revising the previous questionnaire to generate more comprehensive data.

Data on international migration were gathered in the 1988 National Demographic Survey (NDS). With the expanded coverage of the 1993 NDS on health and immunization, the section on international migration was deleted from the NDS but it was recommended for inclusion in SOW starting 1992. In 1993, the SOW was renamed to SOF.

B. OBJECTIVES OF THE SURVEY

The SOF aims to provide data on overseas Filipinos particularly the overseas contract workers and their contribution to the economy. Specifically, the survey has the following objectives:

- to obtain national estimates on the number of overseas Filipinos including overseas workers and their socio-economic characteristics.
- to provide estimates on the amount of cash and in kind transfers received by the families and the modes of remittances.

C. AUTHORITY OF THE SURVEY



Commonwealth Act No. 591

(An act to Create a Bureau of the Census and Statistics to Consolidate Statistical Activities of the Government Therein) which empowers the Bureau to conduct by enumeration, sampling or other methods for statistical purposes, studies of social and economic problems of the country.



Presidential Decree No. 418

Reconstituting the Bureau of the Census and Statistics as a new agency under the administrative supervision of the National Economic and Development Authority to be known as the National Census and Statistics Office.



Executive Order No. 121

(Otherwise known as Reorganization Act of the Philippine Statistical System) renaming the National Statistics Office (NSO) which shall be the major statistical agency responsible for generating general purpose statistics and undertaking such censuses and surveys as may be designated by the National Statistical Coordination Board.

D. CONFIDENTIALITY OF THE INFORMATION

Information gathered by the NSO are protected by law, specifically, Commonwealth Act No. 591. Section 4 of the said law states that:

“the data furnished to the Bureau of the Census and Statistics will be kept strictly confidential and shall not be used as evidence in court for purposes of taxation, regulation or investigation; nor shall such data or information be divulged to any person except authorized employees of the Bureau of the Census and Statistics, acting in the performance of their duties; nor such data be published except in the form of summaries or statistical tables in which no reference to any particular individual, corporation, partnership, institution, or business enterprise shall appear...”

Persons violating the provisions of the above section shall upon conviction, be punished by a fine of not more than six hundred pesos or by imprisonment for not more than six months, or by both.

Furthermore, Section 17 of Executive Order No. 121 stipulates that “subject to existing laws, rules and regulations on confidentiality of information, any individual, institution or instrumentality shall be given access to unpublished data, provided that the cost incurred is assumed by the requesting party, in accordance with existing laws, rules and regulations.”

E. SCOPE OF THE SURVEY

Data gathered in the survey include the demographic and economic characteristics of OFWs and the remittances they send to their families here in the Philippines. Related information such as the place of destination, length of stay abroad, type of work abroad, and date of departure and return were also included.

The reporting unit was the household hence the statistics emanating from this survey refer to OFWs who are members of private households. Institutional population is not within the scope of the survey.

Two forms were used in this survey, namely: (1) SOF Form 1 which gathers the socio-economic characteristics of overseas Filipinos and (2) SOF Form 2 which is a control form.

F. SAMPLING DESIGN

Starting with the October 2003 round, the SOF, as a rider survey to the LFS, used the sampling design of the 2003 Master Sample (MS) for Household Surveys. The 2003 MS was used starting July 2003. This section describes the sampling domains in the 2003 MS, the sampling frame used, the stratification and sample selection procedures, and the sample size used for the October 2008 round of the LFS and SOF.

F1. Domain

The 2003 MS considers the country's 17 administrative regions as defined in Executive Orders (EO) 36 and 131 as its sampling domain. A domain is referred to as a subdivision of the country for which estimates with adequate level of precision are generated. It must be noted that while there is a demand for data at the provincial level (and to some extent municipal and barangay levels), the provinces were not treated as sampling domains because of the large resource requirement for all the 80 provinces, nationwide. Below are the 17 administrative regions of the country:

National Capital Region	Region VII – Central Visayas
Cordillera Administrative Region	Region VIII – Eastern Visayas
Region I – Ilocos Region	Region IX – Zamboanga Peninsula
Region II – Cagayan Valley	Region X – Northern Mindanao
Region III – Central Luzon	Region XI – Davao Region
Region IVA – CALABARZON	Region XII – SOCCSKSARGEN
Region IVB – MIMAROPA	Region XIII – Caraga
Region V – Bicol Region	Autonomous Region in Muslim
Region VI – Western Visayas	Mindanao

F2. Sampling Frame

As in most household surveys, the 2003 MS made use of an area sample design. For this purpose, the Enumeration Area Reference File (EARF) of the 2000 Census of Population and Housing (CPH) was utilized as sampling frame. The EARF contains the number of households by enumeration area (EA) in each barangay.

This frame was used to form the primary sampling units (PSUs). With consideration of the period for which the 2003 MS will be in use, the PSUs were formed/defined as a barangay or a combination of barangays with at least 500 households.

F3. Stratification

The 2003 MS considers the 17 regions of the country as the primary strata. Within each region, further stratification was performed using geographic groupings such as provinces, highly urbanized cities (HUCs), and independent component cities (ICCs). Within each of these substrata formed within regions, the PSUs were further stratified, to the extent possible, using the proportion of strong houses (PSTRONG), indicator of engagement in agriculture of the area (AGRI), and a measure of per capita income as stratification factors (PERCAPITA).

PSTRONG is defined to be the percentage of occupied housing units that are classified as made of strong materials in terms of both the roof and outer walls, based on the data from the 2000 CPH. A roof is considered made of strong material if it is made of either galvanized iron, aluminum, concrete/clay tile, half galvanized-half concrete, or asbestos. The outer wall is considered made of strong material if it is made of concrete, brick, stone, wood, half concrete-half wood, galvanized iron, asbestos or glass.

AGRI was determined in the following way: initially, an indicator variable was computed at the barangay level. That variable has the value 1 if more than 50 percent of the households in the barangay were engaged in agriculture or fisheries and 0 otherwise, based on the 2000 CPH Barangay Schedule. To obtain a measure at the PSU level, a weighted average of the barangay indicator variable was computed for all the barangays within the PSU, weighted by the total number of households in the barangay. Thus, the value of AGRI at the PSU level lies between 0 and 1.

PERCAPITA is defined as the total income of the municipality divided by the total population in that municipality. Note that the PERCAPITA values of the PSUs are the same for the PSUs belonging in the same municipality. The data on municipal income refer to year 2000 and were taken from the Department of Finance. However, if the 2000 municipal income was not reported to the Bureau of Local Government Finance (BLGF), 2001 income was used. If no 2000 or 2001 municipal income was reported, the income classification from the BLGF for this municipality was obtained. Using the data on income, which are presented in income intervals, the average of the lower and the upper values of the income interval for the municipal class to which this municipality

belongs were determined.

F4. Sample Selection

The 2003 MS consists of a sample of 2,835 PSUs. The entire MS was divided into four sub-samples or independent replicates, such as a quarter sample contains one fourth of the total PSUs; a half sample contains one-half of the four sub-samples or equivalent to all PSUs in two replicates.

The final number of sample PSUs for each domain was determined by first classifying PSUs as either self-representing (SR) or non-self-representing (NSR). In addition, to facilitate the selection of subsamples, the total number of NSR PSUs in each region was adjusted to make it a multiple of 4.

SR PSUs refers to a very large PSU in the region/domain with a selection probability of approximately 1 or higher and is outright included in the MS; it is properly treated as a stratum; also known as certainty PSU. NSR PSUs refers to a regular too small sized PSU in a region/domain; also known as non certainty PSU. The 2003 MS consists of 330 certainty PSUs and 2,505 non certainty PSUs.

To have some control over the sub-sample size, the PSUs were selected with probability proportional to some estimated measure of size. The size measure refers to the total number of households from the 2000 CPH. Because of the wide variation in PSU sizes, PSUs with selection probabilities greater than 1 were identified and were included in the sample as certainty selections.

At the second stage, enumeration areas (EAs) were selected within sampled PSUs, and at the third stage, housing units were selected within sampled EAs. Generally, all households in sampled housing units were enumerated, except for few cases when the number of households in a housing unit exceeds three. In which case, a sample of three households in a sampled housing unit was selected at random with equal probability.

An EA is defined as an area with discernable boundaries within barangays consisting of about 150 contiguous households. These EAs were identified during the 2000 CPH. A housing unit, on the other hand, is a structurally separate and independent place of abode which, by the way it has been constructed, converted, or arranged, is intended for habitation by a household.

F5. Sample Size

The 2008 SOF involved the interview of a national sample of about 51,000 households deemed sufficient to provide reliable information on the number of OFWs and their characteristics at the national and regional level. The sample households covered in the survey were the same households interviewed in the October 2008 round of the LFS.

G. CONCEPTS AND DEFINITIONS

G1. *Who are the Overseas Filipinos?*

For purposes of this survey, the following are considered as overseas Filipinos as long as their departure occurred within the given five-year period:

1. Filipino OCWs who are presently and temporarily out of the country to fulfill an overseas work contract for a specific length of time or who are presently at home on vacation but still has an existing contract to work abroad. They may either be landbased or seabased.
 - a. *Landbased workers* – these are OCWs who are hired either by direct hiring of an employer abroad, or through the assistance of Philippine Overseas Employment Administration (POEA), or through a private and licensed recruitment agency. They may have returned to the Philippines for a vacation (annual or emergency leave), or have transferred to other employers, or were rehired by their former employer
 - b. *Seabased workers* – these are OCWs who worked or are working in any kind of international fishing/passenger/cargo vessels. Included also are OCWs who worked or are working for a shipping company abroad
2. Other Filipino workers abroad with a valid working visa or work permits. Included also are crew members of airplanes such as pilots, stewards, stewardesses and others whose employers are foreign nationals.
3. Other Filipino workers other than those who work on contractual basis. These include Filipinos who went out of the country through backdoor means and worked there during the reference period.
4. Filipinos whose place of employment is outside the Philippines but whose employer is the Philippine government.
5. Filipinos who are sent abroad by the Philippine government or by private institutions for training, scholarship or any other similar purpose, even if they are known to be working abroad.
6. Filipinos working in other countries who are hired as consultants/ advisors of international organizations such as the United Nations, International Monetary Fund and others.
7. Filipino immigrants and residents in other countries.
8. Filipinos abroad who are holders of other types of non-immigrant visa such as visa for tourist/visitor, student, medical treatment and others.

G2. Who are the Overseas Filipino Workers?

OFWs include OCWs who were presently and temporarily out of the country during the reference period to fulfill an overseas contract for a specific length of time or who were presently at home on vacation during the reference period but still had an existing contract to work abroad. Also included were other Filipino workers abroad with valid working visas or work permits. Those who had no working visa or work permits (tourists, visitors, students, those seeking medical treatment, and other types of non-immigrants) but were presently employed and working full time in other countries were also classified as OFWs.

H. LIMITATIONS OF THE SURVEY

The SOF has the following limitations:

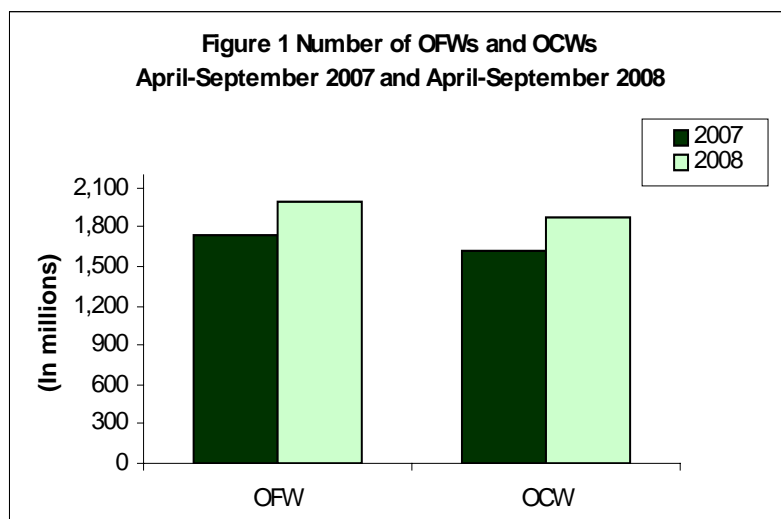
1. Ideally, information about overseas Filipinos should be obtained directly from them. However, since this is not always possible, the information has to come from their relatives or any member of the household who knows the person who left for abroad. The OFWs included in this report are those whose families still reside in the country as of the time of survey visit.
2. The OFWs covered in this report were those working abroad during the period April 1, 2008 to September 30, 2008. The workers who were at home on vacation from their jobs abroad who left earlier than April 1 of the reference year were also included in this report as long as they worked during the specified reference period.
3. The SOF did not ask for the total salary received by the OFWs. Hence, the remittances presented in the results may just be a part of the total salary received by the OFWs.

Starting July 2003 round of the Labor Force Survey (LFS), the 2003 Master Sample (MS) Design has been adopted. Using this new master sample design, the number of samples increased from 41,000 to around 51,000 households. The SOF, being a rider of the LFS, has also adopted the new master sample design starting October 2003. Careful evaluation must be made in comparing the results of the 2008 SOF with other SOF results prior to the implementation of the new MS design.

HIGHLIGHTS

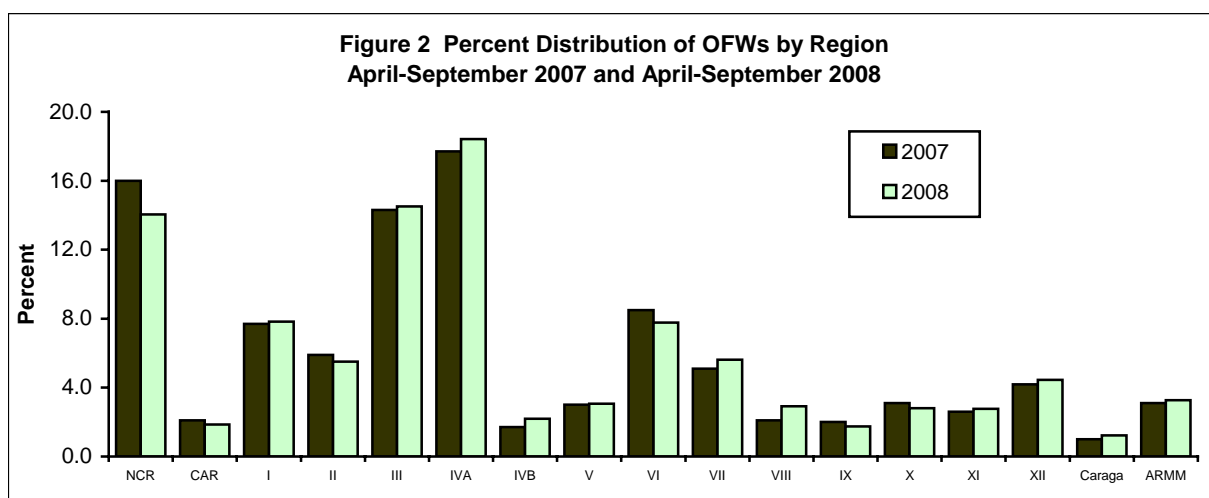
Number of Overseas Filipino Workers (OFWs) registers at 2.0 million

The number of Overseas Filipino Workers (OFWs) who worked abroad at anytime during the period April to September 2008 reached 2.0 million as reported by their families. The 2008 estimate represents an increase of 14.6 percent over the 1.7 million OFWs estimated for the period April to September 2007. The Overseas Contract Workers (OCWs) or those with existing work contract abroad comprised 94.0 percent (1.9 million) of the total OFWs during the period April to September 2008. This number is 16.5 percent more than the 1.6 million OCWs for the same period in 2007.



Source: National Statistics Office, 2007 and 2008 Survey on Overseas Filipinos

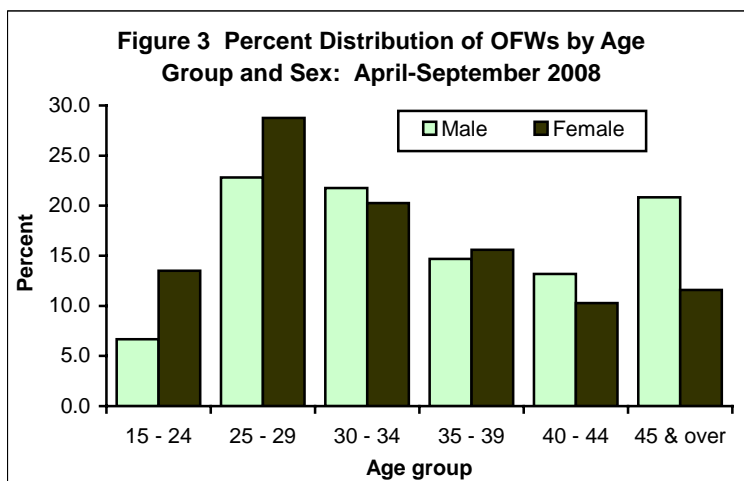
OFWs from CALABARZON (18.4%), Central Luzon (14.5%), and National Capital Region (14.0%) made up almost half (46.9%) of the total number of OFWs. The same pattern was observed during the period April to September 2007, where these three regions contributed the largest number of OFWs and together, comprised 48.0 percent of the total number of OFWs. On the other hand, Caraga reported the smallest share of OFWs at 1.0 percent and 1.2 percent in 2007 and 2008, respectively.



Source: National Statistics Office, 2007 and 2008 Survey on Overseas Filipinos

One in every four OFWs is in age group 25 to 29 years old

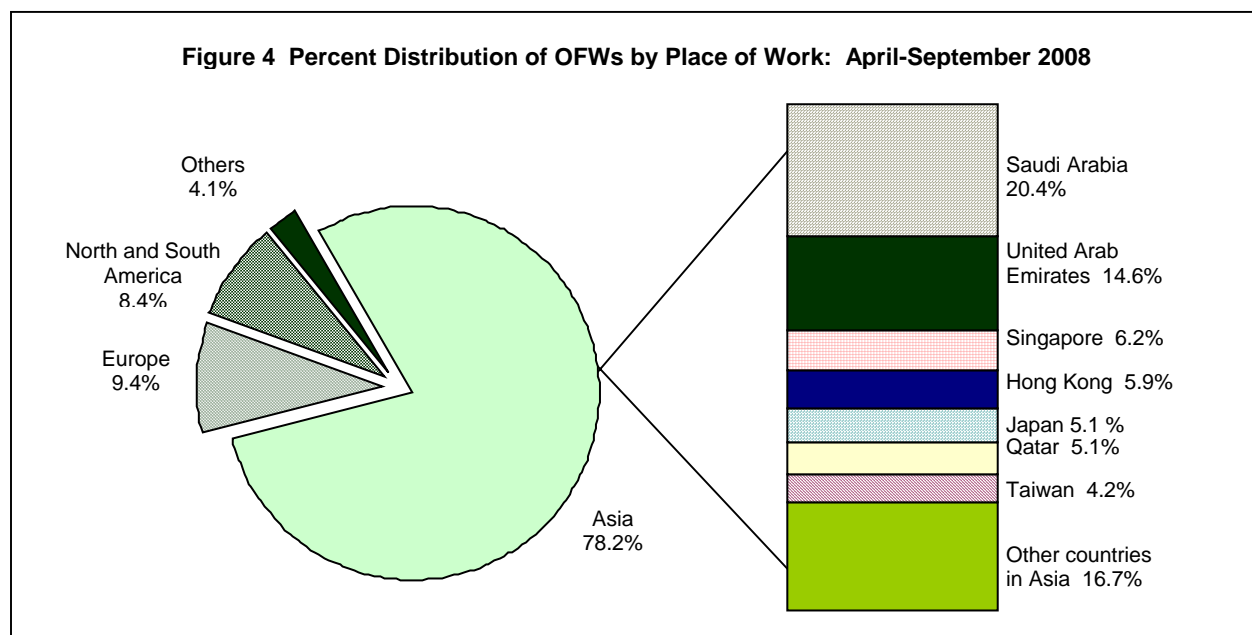
There were more male (51.6%) OFWs than females (48.4%) during the period April to September 2008. More than one fourth of the OFWs (25.7%) were in age group 25 to 29 years. Female OFWs were generally younger compared to male OFWs. Of the total number of female OFWs, 28.8 percent belonged to age group 25 to 29 years and 20.3 percent were in age group 30 to 34 years. Meanwhile, male OFWs were almost evenly distributed among the age groups 25 to 29 years, 30 to 34 years, and 45 years and over.



Source: National Statistics Office, 2008 Survey on Overseas Filipinos

Saudi Arabia remains to be the favorite destination of OFWs

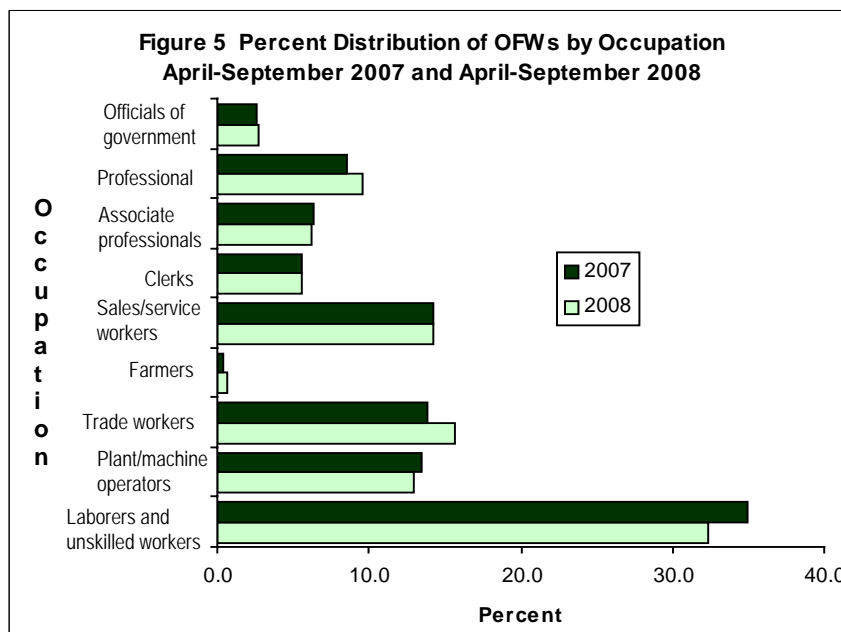
More than one fifth (20.4%) of the OFWs worked in Saudi Arabia. One in every seven (14.6%) OFWs worked in United Arab Emirates. Singapore, Hong Kong, Japan, Qatar and Taiwan were also popular destinations of OFWs. OFWs who worked in Europe comprised 9.4 percent while those who worked in North and South America accounted for 8.4 percent.



Source: National Statistics Office, 2008 Survey on Overseas Filipinos

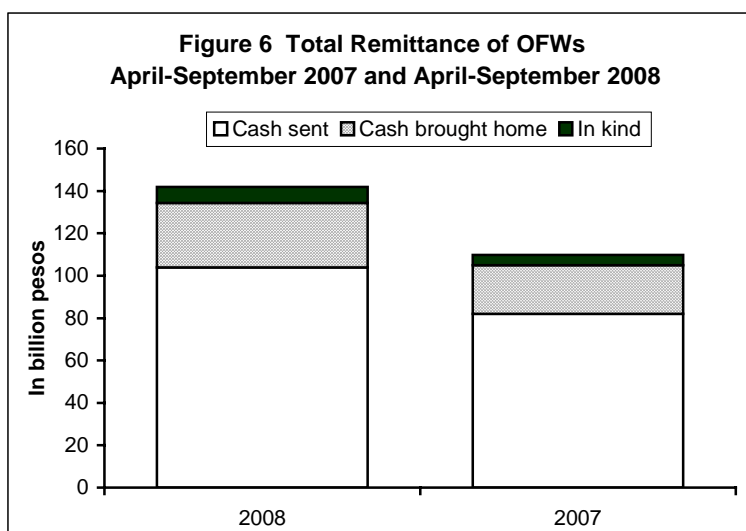
One out of three OFWS is laborer and unskilled worker

About one third (32.4%) of OFWs were laborers and unskilled workers, which include domestic helpers, cleaners and manufacturing laborers. Those who worked as trades and related workers comprised 15.7 percent; service workers and shop and market sales workers, 14.3 percent; and plant and machine operators and assemblers, 13.0 percent.



Source: National Statistics Office, 2007 and 2008 Survey on Overseas Filipinos

Remittances (in April to September 2008) total 141.9 billion pesos



Source: National Statistics Office, 2007 and 2008 Survey on Overseas Filipinos

The total remittance sent by OFWs during the period April to September 2008 was estimated at 141.9 billion pesos, an increase of 32.1 billion pesos from the estimate of 110.0 billion pesos in 2007. Included in the total remittances are cash sent (73.2%), cash brought home (21.5%) and remittances in kind (5.2%). Of the total cash remittances sent, 76.1 percent were through banks, 11.8 percent through door to door, 4.6 percent through the agency or local office and friends or co-workers, and 7.5 percent through other means. OFWs working in Asia, comprising 78.2 percent of all OFWs, sent the biggest cash remittance of 69.9 billion pesos. Among occupation groups, OFWs working as laborers or unskilled workers posted the highest cash remittance of 19.5 billion pesos.

TEXTUAL TABLES

Data on Overseas Filipino Workers

**TABLE A1 Number and Percentage Distribution of Overseas Filipino Workers
by Sex and by Region: 2007 and 2008**

Region	2008			2007		
	Both Sexes	Male	Female	Both Sexes	Male	Female
Philippines	2,002	1,034	968	1,747	890	857
Number (In thousands)						
Total	100.0	100.0	100.0	100.0	100.0	100.0
National Capital Region	14.0	16.2	11.7	16.0	19.3	12.5
Cordillera Administrative Region	1.9	1.1	2.7	2.1	1.4	2.8
I - Ilocos Region	7.8	5.6	10.2	7.7	5.1	10.4
II - Cagayan Valley	5.5	2.8	8.4	5.9	3.1	8.7
III - Central Luzon	14.5	17.2	11.7	14.3	17.6	10.9
IVA - CALABARZON	18.4	22.0	14.6	17.7	21.4	13.8
IVB - MIMAROPA	2.2	2.3	2.1	1.7	1.6	1.7
V - Bicol Region	3.1	3.4	2.7	3.0	2.8	3.2
VI - Western Visayas	7.8	7.0	8.6	8.5	7.1	10.0
VII - Central Visayas	5.6	7.3	3.9	5.1	6.6	3.6
VIII - Eastern Visayas	2.9	2.9	2.9	2.1	2.2	2.1
IX - Zamboanga Peninsula	1.8	1.1	2.4	2.0	1.4	2.6
X - Northern Mindanao	2.8	2.9	2.7	3.1	2.9	3.3
XI - Davao Region	2.8	2.4	3.2	2.6	2.2	3.0
XII - SOCCSKSARGEN	4.5	2.2	6.9	4.2	2.3	6.2
XIII - Caraga	1.2	1.3	1.2	1.0	0.9	1.0
Autonomous Region in Muslim Mindanao	3.3	2.4	4.2	3.1	2.0	4.2

Notes: Details may not add up to totals due to rounding.

The estimates cover overseas Filipinos whose departure occurred within the last five years and who are working or had worked abroad during the past six months (April to September) of the survey period.

Source: National Statistics Office, 2007 and 2008 Survey on Overseas Filipinos

**TABLE B1 Number and Percentage Distribution of Overseas Filipino Workers
by Age Group and by Sex: 2007 and 2008**

Age Group	2008			2007		
	Both Sexes	Male	Female	Both Sexes	Male	Female
Philippines	2,002	1,034	968	1,747	890	857
Number (In thousands)						
Total	100.0	100.0	100.0	100.0	100.0	100.0
15 - 24	10.0	6.7	13.5	10.0	7.4	12.7
25 - 29	25.7	22.8	28.8	24.5	20.3	28.8
30 - 34	21.1	21.8	20.3	20.7	20.0	21.3
35 - 39	15.1	14.7	15.6	16.3	16.9	15.7
40 - 44	11.8	13.2	10.3	11.0	12.5	9.5
45 and over	16.4	20.8	11.6	17.5	22.8	12.0

Notes: Details may not add up to totals due to rounding.

The estimates cover overseas Filipinos whose departure occurred within the last five years and who are working or had worked abroad during the past six months (April to September) of the survey period.

Source: National Statistics Office, 2007 and 2008 Survey on Overseas Filipinos

**TABLE C1 Number and Percentage Distribution of Overseas Filipino Workers
by Place of Work and by Sex: 2007 and 2008**

Place of Work	2008			2007		
	Both Sexes	Male	Female	Both Sexes	Male	Female
Philippines	2,002	1,034	968	1,747	890	857
Number (In thousands)						
Total	100.0	100.0	100.0	100.0	100.0	100.0
Africa	1.5	2.5	0.5	1.2	2.0	0.4
Asia	78.2	73.4	83.3	78.1	73.1	83.2
East Asia	18.8	15.0	22.8	20.9	16.6	25.4
Hong Kong	5.9	0.7	11.5	6.7	1.2	12.4
Japan	5.1	6.2	3.9	5.6	7.1	4.1
Taiwan	4.2	3.4	5.0	5.5	4.0	7.0
Other Countries in East Asia (China, South Korea, etc.)	3.6	4.7	2.4	3.1	4.3	1.9
Southeast and South Central Asia	10.3	7.7	13.1	10.3	7.5	13.2
Malaysia	2.6	3.1	2.0	2.5	2.9	2.1
Singapore	6.2	3.0	9.6	6.0	2.8	9.4
Other Countries in Southeast and South Central Asia (Brunei, etc.)	1.5	1.5	1.5	1.7	1.8	1.7
Western Asia	49.1	50.7	47.5	46.8	49.0	44.6
Kuwait	3.7	1.8	5.7	4.4	1.8	7.2
Qatar	5.1	7.1	2.9	4.5	6.0	3.0
Saudi Arabia	20.4	25.9	14.4	19.8	27.1	12.1
United Arab Emirates	14.6	12.8	16.5	12.1	10.4	13.9
Other Countries in Western Asia (Bahrain, Israel, Lebanon, Jordan, etc.)	5.4	3.1	8.0	6.0	3.7	8.4
Australia	2.4	3.2	1.5	1.9	2.5	1.2
Europe	9.4	11.9	6.7	9.2	11.1	7.2
North and South America	8.4	8.8	7.9	9.3	10.6	7.9
Other countries	0.2	0.2	0.1	0.3	0.5	0.1
Country not reported	-	-	-	0.1	0.2	*

Notes: Details may not add up to totals due to rounding.

* Less than 500

The estimates cover overseas Filipinos whose departure occurred within the last five years and who are working or had worked abroad during the past six months (April to September) of the survey period.

Source: National Statistics Office, 2007 and 2008 Survey on Overseas Filipinos

**TABLE D1 Number and Percent Distribution of Overseas Filipino Workers
by Major Occupation and by Sex: 2007 and 2008**

Major Occupation Group	2008			2007		
	Both Sexes	Male	Female	Both Sexes	Male	Female
Philippines	2,002	1,034	968	1,747	890	857
Number (In thousands)						
Total	100.0	100.0	100.0	100.0	100.0	100.0
Officials of government and special-interest organizations corporate executive, managers, managing proprietors and supervisors	2.7	3.9	1.3	2.6	4.3	0.8
Professionals	9.6	9.9	9.4	8.6	8.8	8.4
Technicians and associate professionals	6.2	7.5	4.9	6.3	7.8	4.8
Clerks	5.6	4.4	6.9	5.6	3.6	7.6
Service workers and shop and market sales workers	14.3	10.3	18.5	14.3	13.0	15.8
Farmers, forestry workers and fishermen	0.6	0.9	0.2	0.4	0.6	0.1
Trades and related workers	15.7	28.3	2.1	13.8	24.9	2.2
Plant and machine operators and assemblers	13.0	23.2	2.1	13.4	24.4	2.1
Laborers and unskilled workers	32.4	11.6	54.7	35.0	12.6	58.3
Special occupations	-	-	-	-	-	-

Notes: Details may not add up to totals due to rounding.

The estimates cover overseas Filipinos whose departure occurred within the last five years and who are working or had worked abroad during the past six months (April to September) of the survey period.

Source: National Statistics Office, 2007 and 2008 Survey on Overseas Filipinos

**TABLE E1 Number and Percent Distribution of Overseas Filipino Workers
by Cash Remittance and by Sex: 2007 and 2008**

Cash Remittance	2008			2007		
	Both Sexes	Male	Female	Both Sexes	Male	Female
Philippines	2,002	1,034	968	1,747	890	857
Number (in thousands)						
Total	100.0	100.0	100.0	100.0	100.0	100.0
No remittance	18.1	15.8	20.4	19.5	16.8	22.3
Less than P20,000	17.3	10.5	25.1	19.9	11.9	28.9
P20,000 - P39,999	26.1	20.8	32.0	25.3	18.7	32.6
P40,000 - P99,999	39.6	44.8	33.7	39.3	45.5	32.5
P100,000 and over	16.9	23.8	9.2	14.9	23.4	5.5
Not reported	0.1	0.2	0.1	0.5	0.5	0.5

Notes: Details may not add up to totals due to rounding.

The estimates cover overseas Filipinos whose departure occurred within the last five years and who are working or had worked abroad during the past six months (April to September) of the survey period.

Source: National Statistics Office, 2007 and 2008 Survey on Overseas Filipinos

**TABLE F1 Total and Average Remittance In Cash and In Kind of Male and Female
Overseas Filipino Workers : 2007 and 2008**

Sex / Total and Average Remittance	Total	Cash Sent	Cash Brought Home	In Kind
2008				
Philippines				
Both Sexes				
Total remittance (In million pesos)	141,904	103,928	30,530	7,446
Average remittance (In thousand pesos)	83	63	91	21
Male				
Total remittance (In million pesos)	92,166	67,094	21,405	3,668
Average remittance (In thousand pesos)	102	77	106	21
Female				
Total remittance (In million pesos)	49,737	36,834	9,125	3,778
Average remittance (In thousand pesos)	62	48	69	22
2007				
Philippines				
Both Sexes				
Total remittance (In million pesos)	109,806	81,902	22,752	5,152
Average remittance (In thousand pesos)	75	59	87	18
Male				
Total remittance (In million pesos)	74,158	55,621	15,602	2,935
Average remittance (In thousand pesos)	96	76	97	20
Female				
Total remittance (In million pesos)	35,648	26,281	7,151	2,216
Average remittance (In thousand pesos)	51	40	71	16

Notes: Details may not add up to totals due to rounding.

The estimates cover overseas Filipinos whose departure occurred within the last five years and who are working or had worked abroad during the past six months (April to September) of the survey period.

Source: National Statistics Office, 2007 and 2008 Survey on Overseas Filipinos

**TABLE G1 Total and Average Cash Remittance of Overseas Filipino Workers
by Mode of Remittance: 2007 and 2008**

Total and Average Cash Remittance	Total	Banks	Agency and or Local Office	Friends and or Co-workers	Door to Door	Others
2008						
Philippines						
Total cash remittance (In million pesos)	103,928	79,097	4,045	741	12,212	7,833
Average cash remittance (In thousand pesos)	63	69	80	24	53	43
2007						
Philippines						
Total cash remittance (In million pesos)	81,902	62,930	2,701	403	11,473	4,396
Average cash remittance (In thousand pesos)	59	63	71	17	50	43

Notes: Details may not add up to totals due to rounding.

The estimates cover overseas Filipinos whose departure occurred within the last five years and who are working or had worked abroad during the past six months (April to September) of the survey period.

**TABLE H1 Total and Average Cash Remittance of Male and Female
Overseas Filipino Workers by Place of Work: 2007 and 2008**

Place of Work	Total Cash Remittance (In million pesos)			Average Cash Remittance (In thousand pesos)		
	Both Sexes	Male	Female	Both Sexes	Male	Female
2008						
Philippines	103,928	67,094	36,834	63	77	48
Africa	2,188	2,071	117	97	105	41
Asia	69,924	43,770	26,154	55	69	41
Australia	3,117	2,618	498	79	91	47
Europe	14,623	9,445	5,178	92	90	94
North and South America	12,043	7,195	4,847	86	91	80
Other countries	147	108	39	59	58	60
Country not reported	-	-	-	-	-	-
2007						
Philippines	81,902	55,621	26,281	59	76	40
Africa	1,747	1,639	107	98	112	34
Asia	57,676	36,714	20,962	53	68	38
Australia	2,132	1,873	259	101	117	51
Europe	10,058	7,567	2,492	78	93	52
North and South America	9,709	7,320	2,389	77	93	51
Other countries	445	397	48	103	103	105
Country not reported	135	111	24	54	53	60

Notes: Details may not add up to totals due to rounding.

The estimates cover overseas Filipinos whose departure occurred within the last five years and who are working or had worked abroad during the past six months (April to September) of the survey period.

Source: National Statistics Office, 2007 and 2008 Survey on Overseas Filipinos

**TABLE 11 Total and Average Cash Remittance of Male and Female
Overseas Filipino Workers by Major Occupation: 2007 and 2008**

Major Occupation Group	Total Cash Remittance (In millions pesos)			Average Cash Remittance (In thousand pesos)		
	Both Sexes	Male	Female	Both Sexes	Male	Female
2008						
Philippines	103,928	67,094	36,834	63	77	48
Officials of government and special-interest organizations, corporate executive, managers managing proprietors and supervisors	5167.363	4,693	474	111	125.86	51
Professionals	15,122	9,901	5,221	97	118	73
Technicians and associate professionals	8,452	6,440	2,011	82	95	57
Clerks	5,295	2,934	2,361	59	78	46
Service workers and shop and market sales workers	15,565	6,663	8,903	67	80	60
Farmers, forestry workers and fishermen	812	688	124	98	91	167
Trades and related workers	18,065	17,261	804	66	68	47
Plant and machine operators and assemblers	15,550	14,551	999	71	71	77
Laborers and unskilled workers	19,899	3,963	15,936	39	43	38
Special occupations	-	-	-	-	-	-
2007						
Philippines	81,902	55,621	26,281	59	76	40
Officials of government and special-interest organizations, corporate executive, managers managing proprietors and supervisors	4,291	3,986	305	107	116	56
Professionals	9,422	6,254	3,168	83	103	60
Technicians and associate professionals	7,880	6,458	1,422	91	110	50
Clerks	3,718	1,663	2,055	50	67	42
Service workers and shop and market sales workers	10,258	5,519	4,739	52	57	47
Farmers, forestry workers and fishermen	187	131	56	47	44	55
Trades and related workers	13,220	12,575	645	64	66	38
Plant and machine operators and assemblers	15,352	14,543	809	77	79	56
Laborers and unskilled workers	17,574	4,492	13,082	37	54	33
Special occupations	-	-	-	-	-	-

Notes: Details may not add up to totals due to rounding.

The estimates cover overseas Filipinos whose departure occurred within the last five years and who are working or had worked abroad during the past six months (April to September) of the survey period.

Source: National Statistics Office, 2007 and 2008 Survey on Overseas Filipinos

TEXTUAL TABLES

Data on Overseas Contract Workers

**TABLE A2 Number and Percentage Distribution of Overseas Contract Workers
by Sex and by Region: 2007 and 2008**

Region	2008			2007		
	Both Sexes	Male	Female	Both Sexes	Male	Female
Philippines	1,881	975	906	1,613	827	786
Number (In thousands)						
Total	100.0	100.0	100.0	100.0	100.0	100.0
National Capital Region	13.8	16.1	11.5	16.3	19.8	12.6
Cordillera Administrative Region	1.9	1.1	2.9	2.1	1.4	2.8
I - Ilocos Region	8.1	5.9	10.5	8.0	5.2	10.9
II - Cagayan Valley	5.8	2.9	9.0	6.2	3.2	9.4
III - Central Luzon	15.0	18.0	11.6	14.4	18.2	10.4
IVA - CALABARZON	17.8	21.9	13.4	17.2	21.0	13.2
IVB - MIMAROPA	2.2	2.3	2.1	1.6	1.5	1.8
V - Bicol Region	3.1	3.5	2.8	3.0	2.7	3.2
VI - Western Visayas	8.1	7.2	9.1	8.6	7.3	10.0
VII - Central Visayas	5.7	7.4	3.8	5.3	6.9	3.7
VIII - Eastern Visayas	2.9	3.0	2.7	2.2	2.2	2.1
IX - Zamboanga Peninsula	1.7	1.0	2.5	1.9	1.2	2.6
X - Northern Mindanao	2.9	3.0	2.8	3.2	3.1	3.2
XI - Davao Region	2.8	2.5	3.2	2.7	2.3	3.2
XII - SOCCSKSARGEN	4.7	2.2	7.3	4.6	2.5	6.8
XIII - Caraga	1.1	1.1	1.2	0.9	0.9	1.0
Autonomous Region in Muslim Mindanao	2.3	0.8	3.9	1.8	0.4	3.2

Notes: Details may not add up to totals due to rounding.

The estimates cover overseas Filipinos whose departure occurred within the last five years and who are working or had worked abroad during the past six months (April to September) of the survey period.

Source: National Statistics Office, 2007 and 2008 Survey on Overseas Filipinos

**TABLE B2 Number and Percentage Distrubution of Overseas Contract Workers
by Age Group and by Sex: 2007 and 2008**

Age Group	2008			2007		
	Both Sexes	Male	Female	Both Sexes	Male	Female
Philippines	1,881	975	906	1,613	827	786
Number (In thousands)						
Total	100.0	100.0	100.0	100.0	100.0	100.0
15 - 24	9.7	6.4	13.2	9.6	7.0	12.4
25 - 29	25.9	22.8	29.3	24.8	20.7	29.1
30 - 34	21.1	21.7	20.4	21.1	20.2	22.0
35 - 39	15.2	14.6	15.9	16.2	16.8	15.6
40 - 44	12.1	13.5	10.6	11.2	12.8	9.5
45 and over	16.0	21.0	10.7	17.1	22.5	11.3

Notes: Details may not add up to totals due to rounding.

The estimates cover overseas Filipinos whose departure occurred within the last five years and who are working or had worked abroad during the past six months (April to September) of the survey period.

Source: National Statistics Office, 2007 and 2008 Survey on Overseas Filipinos

**TABLE C2 Number and Percentage Distribution of Overseas Contract Workers
by Place of Work and by Sex: 2007 and 2008**

Place of Work	2008			2007		
	Both Sexes	Male	Female	Both Sexes	Male	Female
Philippines	1,881	975	906	1,613	827	786
Number (In thousands)						
Total	100.0	100.0	100.0	100.0	100.0	100.0
Africa	1.6	2.6	0.5	1.2	2.0	0.4
Asia	79.6	73.9	85.8	79.6	73.7	85.8
East Asia	19.0	14.8	23.4	21.3	16.6	26.3
Hong Kong	6.2	0.7	12.1	7.1	1.3	13.2
Japan	4.8	5.8	3.7	5.3	6.8	3.8
Taiwan	4.5	3.7	5.3	5.8	4.3	7.4
Other Countries in East Asia (China, South Korea, etc.)	3.5	4.7	2.3	3.1	4.2	1.9
Southeast and South Central Asia	9.5	6.2	13.0	9.3	5.9	12.9
Malaysia	1.4	1.4	1.4	1.3	1.1	1.5
Singapore	6.5	3.2	10.1	6.3	2.9	9.7
Other Countries in Southeast and South Central Asia (Brunei, etc.)	1.6	1.6	1.5	1.8	1.9	1.7
Western Asia	51.2	52.9	49.3	49.0	51.2	46.7
Kuwait	3.8	1.9	5.9	4.7	1.8	7.8
Qatar	5.3	7.5	3.0	4.7	6.2	3.1
Saudi Arabia	21.4	27.2	15.2	20.7	28.6	12.5
United Arab Emirates	15.1	13.2	17.1	12.6	10.9	14.4
Other Countries in Western Asia (Bahrain, Israel, Lebanon, Jordan, etc.)	5.6	3.2	8.1	6.3	3.8	8.9
Australia	2.3	3.3	1.2	1.9	2.5	1.2
Europe	8.4	11.5	5.0	8.1	10.4	5.6
North and South America	8.1	8.5	7.6	8.8	10.6	6.9
Other countries	0.2	0.3	0.1	0.3	0.5	0.1
Country not reported	-	-	-	0.2	0.3	0.1

Notes: Details may not add up to totals due to rounding.

The estimates cover overseas Filipinos whose departure occurred within the last five years and who are working or had worked abroad during the past six months (April to September) of the survey period.

Source: National Statistics Office, 2007 and 2008 Survey on Overseas Filipinos

**TABLE D2 Number and Percent Distribution of Overseas Contract Workers
by Major Occupation and by Sex: 2007 and 2008**

Major Occupation Group	2008			2007		
	Both Sexes	Male	Female	Both Sexes	Male	Female
Philippines	1,881	975	906	1,613	827	786
Number (In thousands)						
Total	100.0	100.0	100.0	100.0	100.0	100.0
Officials of government and special-interest organizations, corporate executive, managers, managing proprietors and supervisors	2.7	4.1	1.2	2.5	4.1	0.8
Professionals	9.6	9.7	9.5	8.5	8.9	8.0
Technicians and associate professionals	6.2	7.7	4.7	6.4	8.1	4.6
Clerks	5.7	4.5	7.0	5.5	3.6	7.5
Service workers and shop and market sales workers	13.3	9.7	17.3	13.5	12.3	14.7
Farmers, forestry workers and fishermen	0.4	0.7	-	0.3	0.4	0.1
Trades and related workers	16.0	28.9	2.2	14.2	25.4	2.3
Plant and machine operators and assemblers	13.5	24.2	2.0	14.2	25.6	2.3
Laborers and unskilled workers	32.5	10.6	56.2	35.0	11.6	59.7
Special occupations	-	-	-	-	-	-

Notes: Details may not add up to totals due to rounding.

The estimates cover overseas Filipinos whose departure occurred within the last five years and who are working or had worked abroad during the past six months (April to September) of the survey period.

Source: National Statistics Office, 2007 and 2008 Survey on Overseas Filipinos

**TABLE E2 Number and Percent Distribution of Overseas Contract Workers
by Cash Remittance and by Sex: 2007 and 2008**

Cash Remittance	2008			2007		
	Both Sexes	Male	Female	Both Sexes	Male	Female
Philippines	1,881	975	906	1,613	827	786
Number (in thousands)						
Total	100.0	100.0	100.0	100.0	100.0	100.0
No remittance	17.3	14.9	19.8	18.4	16.0	20.9
Less than P20,000	16.8	9.4	25.3	19.6	11.2	29.0
P20,000 - P39,999	26.4	20.9	32.6	25.7	18.6	33.6
P40,000 - P99,999	39.9	45.8	33.2	39.3	46.2	31.6
P100,000 and over	16.7	23.7	8.8	14.9	23.4	5.4
Not reported	0.1	0.2	0.1	0.5	0.5	0.4

Notes: Details may not add up to totals due to rounding.

The estimates cover overseas Filipinos whose departure occurred within the last five years and who are working or had worked abroad during the past six months (April to September) of the survey period.

Source: National Statistics Office, 2007 and 2008 Survey on Overseas Filipinos

**TABLE F2 Total and Average Remittance In Cash and In Kind of Male and Female
Overseas Contract Workers: 2007 and 2008**

Sex / Total and Average Remittance	Total	Cash Sent	Cash Brought Home	In Kind
2008				
Philippines				
Both Sexes				
Total remittance (In million pesos)	134,346	98,749	28,611	6,986
Average remittance (In thousand pesos)	83	64	91	21
Male				
Total remittance (In million pesos)	88,119	64,439	20,166	3,513
Average remittance (In thousand pesos)	102	78	105	21
Female				
Total remittance (In million pesos)	46,227	34,310	8,445	3,472
Average remittance (In thousand pesos)	61	47	70	22
2007				
Philippines				
Both Sexes				
Total remittance (In million pesos)	102,616	76,776	21,124	4,716
Average remittance (In thousand pesos)	75	59	86	18
Male				
Total remittance (In million pesos)	69,714	52,580	14,467	2,667
Average remittance (In thousand pesos)	97	76	97	20
Female				
Total remittance (In million pesos)	32,902	24,195	6,657	2,049
Average remittance (In thousand pesos)	51	39	69	16

Notes: Details may not add up to totals due to rounding.

The estimates cover overseas Filipinos whose departure occurred within the last five years and who are working or had worked abroad during the past six months (April to September) of the survey period.

Source: National Statistics Office, 2007 and 2008 Survey on Overseas Filipinos

**TABLE G2 Total and Average Cash Remittance of Overseas Contract Workers
by Mode of Remittance: 2007 and 2008**

Total and Average Cash Remittance	Total	Banks	Agency and or Local Office	Friends and or Co-workers	Door to Door	Others
2008						
Philippines						
Total cash remittance (In million pesos)	98,749	75,440	3,926	533	11,425	7,426
Average cash remittance (In thousand pesos)	64	69	81	31	52	42
2007						
Philippines						
Total cash remittance (In million pesos)	76,776	59,536	2,646	213	10,364	4,017
Average cash remittance (In thousand pesos)	59	62	74	18	49	42

Notes: Details may not add up to totals due to rounding.

The estimates cover overseas Filipinos whose departure occurred within the last five years and who are working or had worked abroad during the past six months (April to September) of the survey period.

Source: National Statistics Office, 2007 and 2008 Survey on Overseas Filipinos

**TABLE H2 Total and Average Cash Remittance of Male and Female
Overseas Contract Workers by Place of Work: 2007 and 2008**

Place of Work	Total Cash Remittance (In million pesos)			Average Cash Remittance (In thousand pesos)		
	Both Sexes	Male	Female	Both Sexes	Male	Female
2008						
Philippines	98,749	64,439	34,310	64	78	47
Africa	2,134	2,017	117	96	105	41
Asia	69,805	44,443	25,362	57	73	41
Australia	2,768	2,447	321	79	88	44
Europe	12,828	8,926	3,902	95	91	105
North and South America	11,067	6,499	4,569	85	88	81
Other countries	147	108	39	59	58	60
Country not reported	-	-	-	-	-	-
2007						
Philippines	76,776	52,580	24,195	59	76	39
Africa	1,721	1,614	107	101	117	34
Asia	55,056	35,122	19,934	53	69	37
Australia	1,977	1,782	195	103	119	46
Europe	8,734	6,934	1,801	81	96	52
North and South America	8,707	6,621	2,087	77	91	51
Other countries	445	397	48	103	103	105
Country not reported	135	111	24	54	53	60

Notes: Details may not add up to totals due to rounding.

The estimates cover overseas Filipinos whose departure occurred within the last five years and who are working or had worked abroad during the past six months (April to September) of the survey period.

Source: National Statistics Office, 2007 and 2008 Survey on Overseas Filipinos

**TABLE 12 Total and Average Cash Remittance of Male and Female
Overseas Contract Workers by Major Occupation Group: 2007 and 2008**

Major Occupation Group	Total Cash Remittance (In millions pesos)			Average Cash Remittance (In thousand pesos)		
	Both Sexes	Male	Female	Both Sexes	Male	Female
2008						
Philippines	98,749	64,439	34,310	64	78	47
Officials of government and special-interest organizations, corporate executive, managers, managing proprietors and supervisors	5,038	4,583	455	113	127	53
Professionals	14,377	9,470	4,907	97	117	72
Technicians and associate professionals	8,150	6,253	1,897	84	96	59
Clerks	5,111	2,797	2,313	60	78	47
Service workers and shop and market sales workers	13,917	5,836	8,081	67	78	61
Farmers, forestry workers and fishermen	598	598	-	97	97	-
Trades and related workers	17,695	16,914	781	67	69	46
Plant and machine operators and assemblers	15,288	14,319	968	72	71	79
Laborers and unskilled workers	18,576	3,669	14,908	38	45	37
Special occupations	-	-	-	-	-	-
2007						
Philippines	76,776	52,580	24,195	59	76	39
Officials of government and special-interest organizations, corporate executive, managers, managing proprietors and supervisors	3,770	3,466	305	103	111	56
Professionals	8,794	6,032	2,761	82	103	57
Technicians and associate professionals	7,621	6,291	1,330	92	110	52
Clerks	3,401	1,468	1,933	49	64	42
Service workers and shop and market sales workers	9,331	4,837	4,494	53	57	49
Farmers, forestry workers and fishermen	180	124	56	55	56	55
Trades and related workers	12,883	12,262	621	65	68	38
Plant and machine operators and assemblers	14,939	14,130	809	77	79	56
Laborers and unskilled workers	15,856	3,971	11,885	36	54	32
Special occupations	-	-	-	-	-	-

Notes: Details may not add up to totals due to rounding.

The estimates cover overseas Filipinos whose departure occurred within the last five years and who are working or had worked abroad during the past six months (April to September) of the survey period.

Source: National Statistics Office, 2007 and 2008 Survey on Overseas Filipinos

STATISTICAL TABLES

Data on Overseas Filipino Workers

**TABLE 1 Number and Percentage Distribution of Overseas Filipino Workers
by Sex and by Region: 2008**

Region	Both Sexes	Male	Female
Philippines	2,002	1,034	968
Number (in thousands)			
Total	100.0	100.0	100.0
National Capital Region	14.0	16.2	11.7
Cordillera Administrative Region	1.9	1.1	2.7
I - Ilocos Region	7.8	5.6	10.2
II - Cagayan Valley	5.5	2.8	8.4
III - Central Luzon	14.5	17.2	11.7
IVA - CALABARZON	18.4	22.0	14.6
IVB - MIMAROPA	2.2	2.3	2.1
V - Bicol Region	3.1	3.4	2.7
VI - Western Visayas	7.8	7.0	8.6
VII - Central Visayas	5.6	7.3	3.9
VIII - Eastern Visayas	2.9	2.9	2.9
IX - Zamboanga Peninsula	1.8	1.1	2.4
X - Northern Mindanao	2.8	2.9	2.7
XI - Davao Region	2.8	2.4	3.2
XII - SOCCSKSARGEN	4.5	2.2	6.9
XIII - Caraga	1.2	1.3	1.2
Autonomous Region in Muslim Mindanao	3.3	2.4	4.2

Notes: Details may not add up to totals due to rounding.

The estimates cover overseas Filipinos whose departure occurred within the last five years and who are working or had worked abroad during the past six months (April to September) of the survey period.

Source: National Statistics Office, 2008 Survey on Overseas Filipinos

**TABLE 2 Number and Percentage Distribution of Overseas Filipino Workers
by Age Group, by Sex and by Area: 2008**

Area Age Group	Both Sexes	Male	Female
Philippines	2,002	1,034	968
Number (in thousands)			
Total	100.0	100.0	100.0
15 - 24	10.0	6.7	13.5
25 - 29	25.7	22.8	28.8
30 - 34	21.1	21.8	20.3
35 - 39	15.1	14.7	15.6
40 - 44	11.8	13.2	10.3
45 and over	16.4	20.8	11.6
National Capital Region	281	168	113
Number (in thousands)			
Total	100.0	100.0	100.0
15 - 24	6.9	4.6	10.3
25 - 29	20.0	15.6	26.5
30 - 34	21.2	20.7	22.1
35 - 39	17.1	18.7	14.7
40 - 44	11.7	13.5	9.1
45 and over	23.1	27.0	17.4
Luzon ^{1/}	1,069	563	506
Number (in thousands)			
Total	100.0	100.0	100.0
15 - 24	9.9	7.5	12.6
25 - 29	25.0	22.7	27.5
30 - 34	20.3	21.8	18.5
35 - 39	15.0	13.6	16.5
40 - 44	12.1	12.8	11.3
45 and over	17.7	21.5	13.5
Visayas	327	177	149
Number (in thousands)			
Total	100.0	100.0	100.0
15 - 24	6.7	4.8	8.9
25 - 29	27.5	26.4	28.9
30 - 34	23.6	21.9	25.7
35 - 39	16.7	15.5	18.1
40 - 44	11.3	13.3	8.9
45 and over	14.1	18.0	9.5
Mindanao	326	126	199
Number (in thousands)			
Total	100.0	100.0	100.0
15 - 24	16.1	8.4	20.9
25 - 29	31.0	27.7	33.1
30 - 34	20.8	22.9	19.5
35 - 39	12.5	13.2	12.0
40 - 44	11.3	14.2	9.4
45 and over	8.4	13.6	5.0

Notes: Details may not add up to totals due to rounding.

1/ Excluding NCR

The estimates cover overseas Filipinos whose departure occurred within the last five years and who are working or had worked abroad during the past six months (April to Sept.) of the survey period.

Source: National Statistics Office, 2008 Survey on Overseas Filipinos

**TABLE 3 Number and Percentage Distribution of Overseas Filipino Workers
by Place of Work and by Sex: 2008**

Area Place of Work	Both Sexes	Male	Female
Philippines Number (in thousands)	2,002	1,034	968
Total	100.0	100.0	100.0
Africa	1.5	2.5	0.5
Asia	78.2	73.4	83.3
East Asia	18.8	15.0	22.8
Hong Kong	5.9	0.7	11.5
Japan	5.1	6.2	3.9
Taiwan	4.2	3.4	5.0
Other Countries in East Asia (China, South Korea, etc.)	3.6	4.7	2.4
Southeast and South Central Asia	10.3	7.7	13.1
Malaysia	2.6	3.1	2.0
Singapore	6.2	3.0	9.6
Other Countries in Southeast and South Central Asia (Brunei, etc.)	1.5	1.5	1.5
Western Asia	49.1	50.7	47.5
Kuwait	3.7	1.8	5.7
Qatar	5.1	7.1	2.9
Saudi Arabia	20.4	25.9	14.4
United Arab Emirates	14.6	12.8	16.5
Other Countries in Western Asia (Bahrain, Israel, Lebanon, Jordan, etc.)	5.4	3.1	8.0
Australia	2.4	3.2	1.5
Europe	9.4	11.9	6.7
North and South America	8.4	8.8	7.9
Other countries	0.2	0.2	0.1
Country not reported	-	-	-

Notes: Details may not add up to totals due to rounding.

The estimates cover overseas Filipinos whose departure occurred within the last five years and who are working or had worked abroad during the past six months (April to September) of the survey period.

Source: National Statistics Office, 2008 Survey on Overseas Filipinos

**TABLE 3A Number and Percentage Distribution of Overseas Filipino Workers
by Place of Work, by Sex and by Area: 2008**

Area Place of Work	Both Sexes	Male	Female
National Capital Region Number (in thousands)	281	168	113
Total	100.0	100.0	100.0
Africa	2.5	3.1	1.5
Asia	69.9	67.6	73.4
Australia	3.0	4.2	1.3
Europe	11.5	13.5	8.4
North and South America	12.9	11.5	14.8
Other countries	0.2	-	0.6
Country not reported	-	-	-
Luzon ^{1/} Number (in thousands)	1,069	563	506
Total	100.0	100.0	100.0
Africa	1.6	2.8	0.3
Asia	78.5	75.1	82.1
Australia	2.6	3.1	2.1
Europe	9.2	10.4	7.9
North and South America	8.1	8.5	7.6
Other countries	-	-	-
Country not reported	-	-	-
Visayas Number (in thousands)	327	177	149
Total	100.0	100.0	100.0
Africa	1.4	1.9	0.7
Asia	74.4	68.6	81.3
Australia	2.4	3.6	1.0
Europe	12.3	16.1	7.7
North and South America	9.0	8.8	9.3
Other countries	0.5	1.0	-
Country not reported	-	-	-
Mindanao Number (in thousands)	326	126	199
Total	100.0	100.0	100.0
Africa	0.6	1.3	0.2
Asia	88.1	79.8	93.4
Australia	1.1	2.0	0.4
Europe	5.3	10.1	2.2
North and South America	4.7	6.3	3.8
Other countries	0.2	0.5	-
Country not reported	-	-	-

Notes: Details may not add up to totals due to rounding.

1/ Excluding NCR

The estimates cover overseas Filipinos whose departure occurred within the last five years and who are working or had worked abroad during the past six months (April to September) of the survey period.

Source: National Statistics Office, 2008 Survey on Overseas Filipinos

**TABLE 4 Number and Percentage Distribution of Overseas Filipino Workers
by Major Occupation Group, by Sex and by Area: 2008**

Area Major Occupation Group	Both Sexes	Male	Female
Philippines	2,002	1,034	968
Number (in thousands)			
Total	100.0	100.0	100.0
Officials of government and special-interest organizations corporate executives, managers, managing proprietors and supervisors	2.7	3.9	1.3
Professionals	9.6	9.9	9.4
Technicians and associate professionals	6.2	7.5	4.9
Clerks	5.6	4.4	6.9
Service workers and shop and market sales workers	14.3	10.3	18.5
Farmers, forestry workers and fishermen	0.6	0.9	0.2
Trades and related workers	15.7	28.3	2.1
Plant and machine operators and assemblers	13.0	23.2	2.1
Laborers and unskilled workers	32.4	11.6	54.7
Special occupations	-	-	-
National Capital Region	281	168	113
Number (in thousands)			
Total	100.0	100.0	100.0
Officials of government and special-interest organizations corporate executives, managers, managing proprietors and supervisors	5.2	6.9	2.7
Professionals	13.8	14.8	12.4
Technicians and associate professionals	8.4	7.1	10.4
Clerks	9.3	8.6	10.3
Service workers and shop and market sales workers	19.1	14.2	26.4
Farmers, forestry workers and fishermen	0.2	0.3	-
Trades and related workers	17.0	24.3	6.1
Plant and machine operators and assemblers	13.0	19.1	3.9
Laborers and unskilled workers	14.0	4.8	27.7
Special occupations	-	-	-
Luzon ^{1/}	1,069	563	506
Number (in thousands)			
Total	100.0	100.0	100.0
Officials of government and special-interest organizations corporate executives, managers, managing proprietors and supervisors	2.7	3.9	1.4
Professionals	8.5	9.2	7.8
Technicians and associate professionals	5.7	6.6	4.7
Clerks	5.5	3.9	7.2
Service workers and shop and market sales workers	15.3	11.3	19.7
Farmers, forestry workers and fishermen	0.4	0.9	-
Trades and related workers	17.8	31.9	2.0
Plant and machine operators and assemblers	11.8	20.4	2.3
Laborers and unskilled workers	32.3	11.9	54.9
Special occupations	-	-	-

TABLE 4 - - - concluded

Area Major Occupation Group	Both Sexes	Male	Female
Visayas	327	177	149
Number (in thousands)			
Total	100.0	100.0	100.0
Officials of government and special-interest organizations corporate executives, managers, managing proprietors and supervisors	1.7	2.3	1.1
Professionals	11.1	9.2	13.3
Technicians and associate professionals	6.9	9.5	3.9
Clerks	3.9	2.1	6.2
Service workers and shop and market sales workers	10.8	6.2	16.3
Farmers, forestry workers and fishermen	0.9	1.3	0.3
Trades and related workers	14.1	25.5	0.5
Plant and machine operators and assemblers	19.2	34.2	1.3
Laborers and unskilled workers	31.4	9.7	57.2
Special occupations	-	-	-
Mindanao	326	126	199
Number (in thousands)			
Total	100.0	100.0	100.0
Officials of government and special-interest organizations corporate executives, managers, managing proprietors and supervisors	1.1	2.4	0.3
Professionals	8.3	7.4	8.9
Technicians and associate professionals	5.5	9.3	3.0
Clerks	4.5	4.3	4.6
Service workers and shop and market sales workers	10.2	6.8	12.4
Farmers, forestry workers and fishermen	0.9	1.1	0.9
Trades and related workers	9.1	21.4	1.4
Plant and machine operators and assemblers	10.6	25.8	1.0
Laborers and unskilled workers	49.7	21.6	67.5
Special occupations	-	-	-

Notes: Details may not add up to totals due to rounding.

1/ Excluding NCR

The estimates cover overseas Filipinos whose departure occurred within the last five years and who are working or had worked abroad during the past six months (April to September) of the survey period.

Source: National Statistics Office, 2008 Survey on Overseas Filipinos

**TABLE 5 Number and Percentage Distribution of Overseas Filipino Workers
by Cash Remittance, by Sex and by Area: 2008**

Area Cash Remittance	Both Sexes	Male	Female
Philippines	2,002	1,034	968
Number (in thousands)			
Total	100.0	100.0	100.0
No remittance	18.1	15.8	20.4
Less than P20,000	17.3	10.5	25.1
P20,000 - P39,999	26.1	20.8	32.0
P40,000 - P99,999	39.6	44.8	33.7
P100,000 and over	16.9	23.8	9.2
Not reported	0.1	0.2	0.1
National Capital Region	281	168	113
Number (in thousands)			
Total	100.0	100.0	100.0
No remittance	17.6	17.4	17.9
Less than P20,000	7.8	5.1	11.9
P20,000 - P39,999	16.2	13.3	20.6
P40,000 - P99,999	41.7	43.0	39.7
P100,000 and over	16.7	21.3	9.9
Not reported	-	-	-
Luzon ^{1/}	1,069	563	506
Number (in thousands)			
Total	100.0	100.0	100.0
No remittance	17.0	14.5	19.8
Less than P20,000	12.7	6.9	19.2
P20,000 - P39,999	21.5	18.6	24.7
P40,000 - P99,999	34.0	38.9	28.5
P100,000 and over	14.6	20.9	7.6
Not reported	-	-	-
Visayas	327	177	149
Number (in thousands)			
Total	100.0	100.0	100.0
No remittance	17.2	16.7	17.8
Less than P20,000	14.3	9.1	20.5
P20,000 - P39,999	23.8	18.8	29.7
P40,000 - P99,999	30.4	36.6	23.1
P100,000 and over	13.8	18.2	8.6
Not reported	-	-	-
Mindanao	326	126	199
Number (in thousands)			
Total	100.0	100.0	100.0
No remittance	22.7	18.5	25.3
Less than P20,000	24.3	21.9	25.9
P20,000 - P39,999	22.7	16.0	27.0
P40,000 - P99,999	21.4	26.7	18.0
P100,000 and over	8.5	16.0	3.8
Not reported	-	-	-

Notes: Details may not add up to totals due to rounding.

1/ Excluding NCR

The estimates cover overseas Filipinos whose departure occurred within the last five years and who are working or had worked abroad during the past six months (April to September) of the survey period.

Source: National Statistics Office, 2008 Survey on Overseas Filipinos

**TABLE 6 Total and Average Remittance In Cash and in Kind of Male and Female
Overseas Filipino Workers by Area: 2008**

Area Sex Total and Average Remittance	Total	Cash Sent	Cash Brought Home	In Kind
Philippines				
Both Sexes				
Total remittance (In million pesos)	141,904	103,928	30,530	7,446
Average remittance (In thousand pesos)	83	63	91	21
Male				
Total remittance (In million pesos)	92,166	67,094	21,405	3,668
Average remittance (In thousand pesos)	102	77	106	21
Female				
Total remittance (In million pesos)	49,737	36,834	9,125	3,778
Average remittance (In thousand pesos)	62	48	69	22
National Capital Region				
Both Sexes				
Total remittance (In million pesos)	23,032	16,652	5,458	922
Average remittance (In thousand pesos)	96	72	127	25
Male				
Total remittance (In million pesos)	15,705	11,259	3,832	613
Average remittance (In thousand pesos)	109	81	142	30
Female				
Total remittance (In million pesos)	7,327	5,393	1,626	309
Average remittance (In thousand pesos)	77	58	102	20
Luzon ^{1/}				
Both Sexes				
Total remittance (In million pesos)	75,434	58,735	13,452	3,247
Average remittance (In thousand pesos)	82	66	78	18
Male				
Total remittance (In million pesos)	49,367	38,549	9,215	1,603
Average remittance (In thousand pesos)	99	80	87	17
Female				
Total remittance (In million pesos)	26,066	20,186	4,237	1,644
Average remittance (In thousand pesos)	61	50	64	18

TABLE 6 - - - concluded

Area Sex Total and Average Remittance	Total	Cash Sent	Cash Brought Home	In Kind
Visayas				
Both Sexes				
Total remittance (In million pesos)	27,452	16,482	8,607	2,363
Average remittance (In thousand pesos)	97	61	115	30
Male				
Total remittance (In million pesos)	18,190	10,510	6,545	1,135
Average remittance (In thousand pesos)	117	72	132	27
Female				
Total remittance (In million pesos)	9,263	5,972	2,063	1,228
Average remittance (In thousand pesos)	73	49	83	33
Mindanao				
Both Sexes				
Total remittance (In million pesos)	15,986	12,060	3,012	914
Average remittance (In thousand pesos)	61	48	67	20
Male				
Total remittance (In million pesos)	8,905	6,776	1,813	316
Average remittance (In thousand pesos)	84	66	87	18
Female				
Total remittance (In million pesos)	7,081	5,284	1,199	598
Average remittance (In thousand pesos)	45	35	50	20

Notes: Details may not add up to totals due to rounding.

1/ Excluding NCR

The estimates cover overseas Filipinos whose departure occurred within the last five years and who are working or had worked abroad during the past six months (April to September) of the survey period.

Source: National Statistics Office, 2008 Survey on Overseas Filipinos

**TABLE 7 Total and Average Cash Remittance of Overseas Filipino Workers
by Mode of Remittance and by Area: 2008**

Area Total and Average Cash Remittance	Total	Banks	Agency and or Local Office	Friends and or Co-workers	Door to Door	Others
Philippines						
Total cash remittance (In million pesos)	103,928	79,097	4,045	741	12,212	7,833
Average cash remittance (In thousand pesos)	63	69	80	24	53	43
National Capital Region						
Total cash remittance (In million pesos)	16,652	12,452	742	26	2,635	798
Average cash remittance (In thousand pesos)	72	76	61	28	62	67
Luzon ^{1/}						
Total cash remittance (In million pesos)	58,735	42,866	2,240	267	8,833	4,529
Average cash remittance (In thousand pesos)	66	73	120	32	52	43
Visayas						
Total cash remittance (In million pesos)	16,482	13,572	724	176	605	1,405
Average cash remittance (In thousand pesos)	61	65	59	58	55	41
Mindanao						
Total cash remittance (In million pesos)	12,060	10,207	340	271	139	1,101
Average cash remittance (In thousand pesos)	48	55	46	14	25	33

Notes: Details may not add up to totals due to rounding.

1/ Excluding NCR

The estimates cover overseas Filipinos whose departure occurred within the last five years and who are working or had worked abroad during the past six months (April to September) of the survey period.

Source: National Statistics Office, 2008 Survey on Overseas Filipinos

**TABLE 8 Number and Percentage Distribution of Overseas Filipino Workers
by Type, by Sex and by Area: 2008**

Sex Area	Total Overseas Workers	Contract Workers	Non-Contract Workers
Philippines Number (in thousands)	2,002	1,881	121
Total	100.0	100.0	100.0
National Capital Region	14.0	13.8	17.1
Luzon ^{1/}	53.4	54.0	44.5
Visayas	16.3	16.7	10.9
Mindanao	16.3	15.6	27.5
Male Number (in thousands)	1,034	975	59
Total	100.0	100.0	100.0
National Capital Region	16.2	16.0	19.0
Luzon ^{1/}	54.4	55.6	34.6
Visayas	17.1	17.6	9.1
Mindanao	12.2	10.7	37.3
Female Number (in thousands)	968	906	62
Total	100.0	100.0	100.0
National Capital Region	11.7	11.5	15.3
Luzon ^{1/}	52.3	52.2	54.0
Visayas	15.4	15.6	12.6
Mindanao	20.6	20.8	18.1

Notes: Details may not add up to totals due to rounding.

1/ Excluding NCR

The estimates cover overseas Filipinos whose departure occurred within the last five years and who are working or had worked abroad during the past six months (April to September) of the survey period.

Source: National Statistics Office, 2008 Survey on Overseas Filipinos

**TABLE 9 Total and Average Cash Remittance of Male and Female Overseas Filipino Workers
by Place of Work: 2008**

Area Place of Work	Total Cash Remittance (In million pesos)			Average Cash Remittance (In thousand pesos)		
	Both Sexes	Male	Female	Both Sexes	Male	Female
Philippines	103,928	67,094	36,834	63	77	48
Africa	2,188	2,071	117	97	105	41
Asia	71,810	45,656	26,154	56	72	41
East Asia	17,348	9,189	8,158	56	74	44
Hong Kong	3,198	283	2,914	32	57	31
Japan	5,894	3,822	2,072	74	75	72
Taiwan	3,721	1,742	1,979	53	60	48
Other countries in East Asia (China, South Korea, etc.)	4,535	3,342	1,193	76	84	60
Southeast and South Central Asia	8,687	5,409	3,278	55	87	34
Malaysia	1,248	911	336	35	39	27
Singapore	4,632	2,127	2,504	48	82	36
Other countries in Southeast and South Central Asia (Brunei, etc)	2,808	2,371	437	110	181	35
Western Asia	45,775	31,057	14,718	57	69	41
Kuwait	3,265	1,651	1,614	56	103	38
Qatar	4,909	4,088	821	58	66	36
Saudi Arabia	19,405	15,162	4,243	57	65	39
United Arab Emirates	12,588	7,739	4,849	55	71	40
Other countries in Western Asia (Bahrain, Israel, Lebanon, Jordan, etc)	5,607	2,416	3,191	59	87	47
Australia	3,117	2,618	498	79	91	47
Europe	14,623	9,445	5,178	92	90	94
North and South America	12,043	7,195	4,847	86	91	80
Other countries	147	108	39	59	58	60
Country not reported	-	-	-	-	-	-

Notes: Details may not add up to totals due to rounding.

The estimates cover overseas Filipinos whose departure occurred within the last five years and who are working or had worked abroad during the past six months (April to September) of the survey period.

Source: National Statistics Office, 2008 Survey on Overseas Filipinos

**TABLE 9A Total and Average Cash Remittance of Male and Female Overseas Filipino Workers
by Place of Work and by Area: 2008**

Area Place of Work	Total Cash Remittance (In million pesos)			Average Cash Remittance (In thousand pesos)		
	Both Sexes	Male	Female	Both Sexes	Male	Female
National Capital Region	16,652	11,259	5,393	72	81	58
Africa	386	377	8	77	82	20
Asia	10,834	7,115	3,718	67	77	54
Australia	574	531	43	81	89	39
Europe	1,993	1,340	653	76	74	83
North and South America	2,826	1,896	931	89	108	65
Other countries	39	-	39	60	-	60
Country not reported	-	-	-	-	-	-
Luzon ^{1/}	58,735	38,549	20,186	66	80	50
Africa	1,494	1,439	56	120	126	55
Asia	40,714	26,944	13,770	59	75	41
Australia	1,710	1,304	406	73	83	53
Europe	8,437	5,196	3,241	102	105	97
North and South America	6,379	3,667	2,712	87	85	91
Other countries	-	-	-	-	-	-
Country not reported	-	-	-	-	-	-
Visayas	16,482	10,510	5,972	61	72	49
Africa	213	170	43	55	61	40
Asia	10,617	6,521	4,096	53	65	41
Australia	683	637	46	104	126	31
Europe	3,022	2,061	960	84	80	92
North and South America	1,862	1,036	826	83	84	82
Other countries	85	85	-	73	73	-
Country not reported	-	-	-	-	-	-
Mindanao	12,060	6,776	5,284	48	66	35
Africa	95	85	10	72	88	27
Asia	9,646	5,076	4,570	44	63	33
Australia	150	146	4	58	69	8
Europe	1,171	848	323	80	77	89
North and South America	975	597	378	77	94	59
Other countries	23	23	-	33	33	-
Country not reported	-	-	-	-	-	-

Notes: Details may not add up to totals due to rounding.

^{1/} Excluding NCR

The estimates cover overseas Filipinos whose departure occurred within the last five years and who are working or had worked abroad during the past six months (April to September) of the survey period.

Source: National Statistics Office, 2008 Survey on Overseas Filipinos

**TABLE 10 Total and Average Cash Remittance of Male and Female Overseas Filipino Workers,
by Major Occupation Group and by Area: 2008**

Area Major Occupation Group	Total Cash Remittance (In million pesos)			Average Cash Remittance (In thousand pesos)		
	Both Sexes	Male	Female	Both Sexes	Male	Female
Philippines	103,928	67,094	36,834	63	77	48
Officials of government and special-interest organizations, corporate executives, managers managing proprietors and supervisors	5,167	4,693	474	111	126	51
Professionals	15,122	9,901	5,221	97	118	73
Technicians and associate professionals	8,452	6,440	2,011	82	95	57
Clerks	5,295	2,934	2,361	59	78	46
Service workers and shop and market sales worker	15,565	6,663	8,903	67	80	60
Farmers, forestry workers and fishermen	812	688	124	98	91	167
Trades and related workers	18,065	17,261	804	66	68	47
Plant and machine operators and assemblers	15,550	14,551	999	71	71	77
Laborers and unskilled workers	19,899	3,963	15,936	39	43	38
Special occupations	-	-	-	-	-	-
National Capital Region	16,652	11,259	5,393	72	81	58
Officials of government and special-interest organizations, corporate executives, managers managing proprietors and supervisors	1,441	1,295	147	108	112	78
Professionals	3,138	2,116	1,022	95	103	82
Technicians and associate professionals	1,490	955	534	81	106	58
Clerks	1,562	1,103	459	70	85	49
Service workers and shop and market sales worker	2,771	1,206	1,565	65	71	61
Farmers, forestry workers and fishermen	87	87	0	178	178	0
Trades and related workers	2,757	2,433	324	69	71	55
Plant and machine operators and assemblers	2,143	1,840	303	71	67	107
Laborers and unskilled workers	1,261	224	1,037	40	41	40
Special occupations	-	-	-	-	-	-
Luzon ^{1/}	58,735	38,549	20,186	66	80	50
Officials of government and special-interest organizations, corporate executives, managers managing proprietors and supervisors	2,957	2,717	240	119	142	43
Professionals	7,613	5,667	1,946	108	134	69
Technicians and associate professionals	4,304	3,288	1,015	85	95	63
Clerks	2,756	1,531	1,225	60	81	46
Service workers and shop and market sales worker	9,920	4,279	5,641	74	85	67
Farmers, forestry workers and fishermen	470	470	0	98	98	0
Trades and related workers	11,165	10,747	418	67	68	45
Plant and machine operators and assemblers	7,867	7,236	632	73	73	77
Laborers and unskilled workers	11,682	2,614	9,068	42	49	40
Special occupations	-	-	-	-	-	-

TABLE 10 - - - concluded

Area Major Occupation Group	Total Cash Remittance (In million pesos)			Average Cash Remittance (In thousand pesos)		
	Both Sexes	Male	Female	Both Sexes	Male	Female
Visayas	16,482	10,510	5,972	61	72	49
Officials of government and special-interest organizations, corporate executives, managers managing proprietors and supervisors	364	338	26	78	93	25
Professionals	2,150	911	1,239	71	66	76
Technicians and associate professionals	1,524	1,303	221	78	92	41
Clerks	439	74	365	43	37	44
Service workers and shop and market sales worker	1,782	728	1,053	64	83	55
Farmers, forestry workers and fishermen	216	98	118	99	57	270
Trades and related workers	2,819	2,819	0	68	68	0
Plant and machine operators and assemblers	3,822	3,789	34	75	75	39
Laborers and unskilled workers	3,366	450	2,916	41	40	41
Special occupations	-	-	-	-	-	-
Mindanao	12,060	6,776	5,284	48	66	35
Officials of government and special-interest organizations, corporate executives, managers managing proprietors and supervisors	405	344	61	110	116	88
Professionals	2,221	1,206	1,015	102	164	71
Technicians and associate professionals	1,134	894	240	80	93	53
Clerks	538	226	311	49	62	42
Service workers and shop and market sales worker	1,093	450	643	42	61	34
Farmers, forestry workers and fishermen	38	32	6	45	60	20
Trades and related workers	1,324	1,263	61	54	57	30
Plant and machine operators and assemblers	1,718	1,687	31	61	62	31
Laborers and unskilled workers	3,589	675	2,914	30	32	29
Special occupations	-	-	-	-	-	-

Notes: Details may not add up to totals due to rounding.

1/ Excluding NCR

The estimates cover overseas Filipinos whose departure occurred within the last five years and who are working or had worked abroad during the past six months (April to September) of the survey period.

Source: National Statistics Office, 2008 Survey on Overseas Filipinos

STATISTICAL TABLES

Data on Overseas Contract Workers

**TABLE 1 Number and Percentage Distribution of Overseas Contract Workers
by Sex and by Region: 2008**

Region	Both Sexes	Male	Female
Philippines	1,881	975	906
Number (in thousands)			
Total	100.0	100.0	100.0
National Capital Region	13.8	16.1	11.5
Cordillera Administrative Region	1.9	1.1	2.9
I - Ilocos Region	8.1	5.9	10.5
II - Cagayan Valley	5.8	2.9	9.0
III - Central Luzon	15.0	18.0	11.6
IVA - CALABARZON	17.8	21.9	13.4
IVB - MIMAROPA	2.2	2.3	2.1
V - Bicol Region	3.1	3.5	2.8
VI - Western Visayas	8.1	7.2	9.1
VII - Central Visayas	5.7	7.4	3.8
VIII - Eastern Visayas	2.9	3.0	2.7
IX - Zamboanga Peninsula	1.7	1.0	2.5
X - Northern Mindanao	2.9	3.0	2.8
XI - Davao Region	2.8	2.5	3.2
XII - SOCCSKSARGEN	4.7	2.2	7.3
XIII - Caraga	1.1	1.1	1.2
Autonomous Region in Muslim Mindanao	2.3	0.8	3.9

Notes: Details may not add up to totals due to rounding.

The estimates cover overseas Filipinos whose departure occurred within the last five years and who are working or had worked abroad during the past six months (April to September) of the survey period.

Source: National Statistics Office, 2008 Survey on Overseas Filipinos

**TABLE 2 Number and Percentage Distribution of Overseas Contract Workers
by Age Group, by Sex and by Area: 2008**

Area Age Group	Both Sexes	Male	Female
Philippines	1,881	975	906
Number (in thousands)			
Total	100.0	100.0	100.0
15 - 24	9.69	6.4	13.2
25 - 29	25.92	22.8	29.3
30 - 34	21.06	21.7	20.4
35 - 39	15.21	14.6	15.9
40 - 44	12.12	13.5	10.6
45 and over	16.01	21.0	10.7
National Capital Region	260	156	104
Number (in thousands)			
Total	100.0	100.0	100.0
15 - 24	6.6	4.2	10.2
25 - 29	20.2	15.2	27.7
30 - 34	21.3	21.0	21.8
35 - 39	17.2	18.4	15.5
40 - 44	11.9	14.1	8.5
45 and over	22.8	27.1	16.4
Luzon ^{1/}	1,015	542	473
Number (in thousands)			
Total	100.0	100.0	100.0
15 - 24	9.5	7.3	11.9
25 - 29	25.6	23.4	28.2
30 - 34	20.4	21.5	19.1
35 - 39	14.9	13.2	16.8
40 - 44	12.5	13.2	11.6
45 and over	17.1	21.4	12.3
Visayas	313	172	142
Number (in thousands)			
Total	100.0	100.0	100.0
15 - 24	6.7	4.8	9.0
25 - 29	27.9	26.4	29.7
30 - 34	23.5	22.6	24.7
35 - 39	16.8	15.4	18.5
40 - 44	11.4	13.0	9.4
45 and over	13.7	17.8	8.7
Mindanao	293	104	188
Number (in thousands)			
Total	100.0	100.0	100.0
15 - 24	16.5	7.6	21.4
25 - 29	29.9	25.5	32.3
30 - 34	20.5	22.5	19.4
35 - 39	12.8	14.3	11.9
40 - 44	11.8	15.2	10.0
45 and over	8.5	14.8	5.0

Notes: Details may not add up to totals due to rounding.

1/ Excluding NCR

The estimates cover overseas Filipinos whose departure occurred within the last five years and who are working or had worked abroad during the past six months (April to Sept.) of the survey period

Source: National Statistics Office, 2008 Survey on Overseas Filipinos

**TABLE 3 Number and Percentage Distribution of Overseas Contract Workers
by Place of Work and by Sex: 2008**

Area Place of Work	Both Sexes	Male	Female
Philippines	1,881	975	906
Number (in thousands)			
Total	100.0	100.0	100.0
Africa	1.6	2.6	0.5
Asia	79.6	73.9	85.8
East Asia	19.0	14.8	23.4
Hong Kong	6.2	0.7	12.1
Japan	4.8	5.8	3.7
Taiwan	4.5	3.7	5.3
Other Countries in East Asia (China, South Korea, etc.)	3.5	4.7	2.3
Southeast and South Central Asia	9.5	6.2	13.0
Malaysia	1.4	1.4	1.4
Singapore	6.5	3.2	10.1
Other Countries in Southeast and South Central Asia (Brunei, etc.)	1.6	1.6	1.5
Western Asia	51.2	52.9	49.3
Kuwait	3.8	1.9	5.9
Qatar	5.3	7.5	3.0
Saudi Arabia	21.4	27.2	15.2
United Arab Emirates	15.1	13.2	17.1
Other Countries in Western Asia (Bahrain, Israel, Lebanon, Jordan, etc.)	5.6	3.2	8.1
Australia	2.3	3.3	1.2
Europe	8.4	11.5	5.0
North and South America	8.1	8.5	7.6
Other countries	0.2	0.3	0.1
Country not reported	-	-	-

Notes: Details may not add up to totals due to rounding.

The estimates cover overseas Filipinos whose departure occurred within the last five years and who are working or had worked abroad during the past six months (April to September) of the survey period.

Source: National Statistics Office, 2008 Survey on Overseas Filipinos

**TABLE 3A Number and Percentage Distribution of Overseas Contract Workers
by Place of Work, by Sex and by Area: 2008**

Area Place of Work	Both Sexes	Male	Female
National Capital Region	260	156	104
Number (in thousands)			
Total	100.0	100.0	100.0
Africa	2.7	3.4	1.6
Asia	71.1	68.4	75.2
Australia	2.6	3.4	1.4
Europe	11.0	13.5	7.2
North and South America	12.3	11.3	13.9
Other countries	0.2	-	0.6
Country not reported	-	-	-
Luzon^{1/}	1,015	542	473
Number (in thousands)			
Total	100.0	100.0	100.0
Africa	1.6	2.8	0.2
Asia	80.8	76.5	85.6
Australia	2.5	3.2	1.7
Europe	7.4	9.3	5.2
North and South America	7.8	8.1	7.3
Other countries	-	-	-
Country not reported	-	-	-
Visayas	313	172	142
Number (in thousands)			
Total	100.0	100.0	100.0
Africa	1.4	2.0	0.8
Asia	75.5	68.8	83.6
Australia	2.2	3.7	0.3
Europe	11.9	16.6	6.2
North and South America	8.4	7.9	9.1
Other countries	0.5	1.0	-
Country not reported	-	-	-
Mindanao	293	104	188
Number (in thousands)			
Total	100.0	100.0	100.0
Africa	0.7	1.5	0.2
Asia	87.5	76.6	93.5
Australia	1.2	2.5	0.5
Europe	5.6	11.4	2.4
North and South America	4.8	7.3	3.4
Other countries	0.2	0.7	-
Country not reported	-	-	-

Notes: Details may not add up to totals due to rounding.

1/ Excluding NCR

The estimates cover overseas Filipinos whose departure occurred within the last five years and who are working or had worked abroad during the past six months (April to September) of the survey period.

Source: National Statistics Office, 2008 Survey on Overseas Filipinos

**TABLE 4 Number and Percentage Distribution of Overseas Contract Workers
by Major Occupation Group, by Sex and by Area: 2008**

Area Major Occupation Group	Both Sexes	Male	Female
Philippines	1,881	975	906
Number (in thousands)			
Total	100.0	100.0	100.0
Officials of government and special-interest organizations corporate executives, managers, managing proprietors and supervisors	2.7	4.1	1.2
Professionals	9.6	9.7	9.5
Technicians and associate professionals	6.2	7.7	4.7
Clerks	5.7	4.5	7.0
Service workers and shop and market sales workers	13.3	9.7	17.3
Farmers, forestry workers and fishermen	0.4	0.7	-
Trades and related workers	16.0	28.9	2.2
Plant and machine operators and assemblers	13.5	24.2	2.0
Laborers and unskilled workers	32.5	10.6	56.2
Special occupations	-	-	-
National Capital Region	260	156	104
Number (in thousands)			
Total	100.0	100.0	100.0
Officials of government and special-interest organizations corporate executives, managers, managing proprietors and supervisors	4.7	6.6	1.8
Professionals	13.1	13.4	12.6
Technicians and associate professionals	8.0	6.9	9.8
Clerks	9.6	9.2	10.3
Service workers and shop and market sales workers	17.9	12.9	25.6
Farmers, forestry workers and fishermen	0.2	0.3	-
Trades and related workers	18.2	26.1	6.2
Plant and machine operators and assemblers	13.6	19.8	4.3
Laborers and unskilled workers	14.6	4.8	29.4
Special occupations	-	-	-
Luzon ^{1/}	1,015	542	473
Number (in thousands)			
Total	100.0	100.0	100.0
Officials of government and special-interest organizations corporate executives, managers, managing proprietors and supervisors	2.8	4.1	1.4
Professionals	8.6	9.3	7.9
Technicians and associate professionals	5.7	6.6	4.6
Clerks	5.5	3.9	7.4
Service workers and shop and market sales workers	14.1	10.4	18.4
Farmers, forestry workers and fishermen	0.5	0.9	-
Trades and related workers	18.4	32.5	2.2
Plant and machine operators and assemblers	12.2	21.0	2.0
Laborers and unskilled workers	32.2	11.3	56.1
Special occupations	-	-	-

TABLE 4 - - - concluded

Area Major Occupation Group	Both Sexes	Male	Female
Visayas	313	172	142
Number (in thousands)			
Total	100.0	100.0	100.0
Officials of government and special-interest organizations corporate executives, managers, managing proprietors and supervisors	1.8	2.4	1.1
Professionals	10.4	8.7	12.5
Technicians and associate professionals	7.2	9.8	4.1
Clerks	3.9	2.1	6.1
Service workers and shop and market sales workers	10.0	5.8	15.2
Farmers, forestry workers and fishermen	0.3	0.6	-
Trades and related workers	14.5	26.0	0.5
Plant and machine operators and assemblers	19.7	34.8	1.4
Laborers and unskilled workers	32.0	9.8	59.1
Special occupations	-	-	-
Mindanao	293	104	188
Number (in thousands)			
Total	100.0	100.0	100.0
Officials of government and special-interest organizations corporate executives, managers, managing proprietors and supervisors	1.3	2.8	0.4
Professionals	8.9	8.1	9.4
Technicians and associate professionals	5.6	10.5	2.8
Clerks	4.8	4.9	4.7
Service workers and shop and market sales workers	10.0	7.4	11.5
Farmers, forestry workers and fishermen	0.2	0.5	-
Trades and related workers	7.6	18.8	1.4
Plant and machine operators and assemblers	11.3	29.8	1.1
Laborers and unskilled workers	50.3	17.2	68.7
Special occupations	-	-	-

Notes: Details may not add up to totals due to rounding.

1/ Excluding NCR

The estimates cover overseas Filipinos whose departure occurred within the last five years and who are working or had worked abroad during the past six months (April to September) of the survey period.

Source: National Statistics Office, 2008 Survey on Overseas Filipinos

**TABLE 5 Number and Percentage Distribution of Overseas Contract Workers
by Cash Remittance, by Sex and by Area: 2008**

Area Cash Remittance	Both Sexes	Male	Female
Philippines	1,881	975	906
Number (in thousands)			
Total	100.0	100.0	100.0
No remittance	17.3	14.9	19.8
Less than P20,000	16.8	9.4	25.3
P20,000 - P39,999	26.4	20.9	32.6
P40,000 - P99,999	39.9	45.8	33.2
P100,000 and over	16.7	23.7	8.8
Not reported	0.1	0.2	0.1
National Capital Region	260	156	104
Number (in thousands)			
Total	100.0	100.0	100.0
No remittance	16.3	16.2	16.4
Less than P20,000	7.5	4.7	11.8
P20,000 - P39,999	17.2	13.6	22.4
P40,000 - P99,999	42.5	44.8	39.0
P100,000 and over	16.6	20.7	10.3
Not reported	-	-	-
Luzon ^{1/}	1,015	542	473
Number (in thousands)			
Total	100.0	100.0	100.0
No remittance	16.3	13.8	19.2
Less than P20,000	13.2	7.1	20.2
P20,000 - P39,999	21.7	18.8	25.1
P40,000 - P99,999	34.2	39.5	28.1
P100,000 and over	14.6	20.9	7.4
Not reported	-	-	-
Visayas	313	172	142
Number (in thousands)			
Total	100.0	100.0	100.0
No remittance	16.6	16.0	17.2
Less than P20,000	14.6	9.4	20.8
P20,000 - P39,999	24.4	19.4	30.6
P40,000 - P99,999	30.4	36.4	23.1
P100,000 and over	13.5	18.1	7.9
Not reported	0.5	0.6	0.3
Mindanao	293	104	188
Number (in thousands)			
Total	100.0	100.0	100.0
No remittance	22.3	17.0	25.2
Less than P20,000	21.5	15.5	24.7
P20,000 - P39,999	23.4	16.2	27.5
P40,000 - P99,999	23.4	31.7	18.8
P100,000 and over	9.2	18.9	3.8
Not reported	0.2	0.7	-

Notes: Details may not add up to totals due to rounding.

1/ Excluding NCR

The estimates cover overseas Filipinos whose departure occurred within the last five years and who are working or had worked abroad during the past six months (April to September) of the survey period.

Source: National Statistics Office, 2008 Survey on Overseas Filipinos

**TABLE 6 Total and Average Remittance In Cash and in Kind of Male and Female
Overseas Contract Workers by Area: 2008**

Area Sex Total and Average Remittance	Total	Cash Sent	Cash Brought Home	In Kind
Philippines				
Both Sexes				
Total remittance (In million pesos)	134,346	98,749	28,611	6,986
Average remittance (In thousand pesos)	83	64	91	21
Male				
Total remittance (In million pesos)	88,119	64,439	20,166	3,513
Average remittance (In thousand pesos)	102	78	105	21
Female				
Total remittance (In million pesos)	46,227	34,310	8,445	3,472
Average remittance (In thousand pesos)	61	47	70	22
National Capital Region				
Both Sexes				
Total remittance (In million pesos)	21,019	15,628	4,575	816
Average remittance (In thousand pesos)	94	72	117	25
Male				
Total remittance (In million pesos)	14,134	10,581	3,008	546
Average remittance (In thousand pesos)	104	81	125	29
Female				
Total remittance (In million pesos)	6,885	5,048	1,567	270
Average remittance (In thousand pesos)	77	58	105	21
Luzon ^{1/}				
Both Sexes				
Total remittance (In million pesos)	71,902	56,163	12,606	3,133
Average remittance (In thousand pesos)	81	66	79	18
Male				
Total remittance (In million pesos)	47,862	37,398	8,906	1,558
Average remittance (In thousand pesos)	99	80	89	17
Female				
Total remittance (In million pesos)	24,040	18,766	3,699	1,575
Average remittance (In thousand pesos)	60	49	62	19

TABLE 6 - - - concluded

Area Sex Total and Average Remittance	Total	Cash Sent	Cash Brought Home	In Kind
Visayas				
Both Sexes				
Total remittance (In million pesos)	26,312	15,600	8,523	2,189
Average remittance (In thousand pesos)	96	60	118	29
Male				
Total remittance (In million pesos)	17,721	10,110	6,494	1,117
Average remittance (In thousand pesos)	117	71	135	27
Female				
Total remittance (In million pesos)	8,590	5,490	2,029	1,071
Average remittance (In thousand pesos)	71	47	85	32
Mindanao				
Both Sexes				
Total remittance (In million pesos)	15,113	11,357	2,908	848
Average remittance (In thousand pesos)	63	50	68	20
Male				
Total remittance (In million pesos)	8,401	6,351	1,758	292
Average remittance (In thousand pesos)	94	74	91	19
Female				
Total remittance (In million pesos)	6,712	5,006	1,149	556
Average remittance (In thousand pesos)	45	36	50	20

Notes: Details may not add up to totals due to rounding.

1/ Excluding NCR

The estimates cover overseas Filipinos whose departure occurred within the last five years and who are working or had worked abroad during the past six months (April to September) of the survey period.

Source: National Statistics Office, 2008 Survey on Overseas Filipinos

**TABLE 7 Total and Average Cash Remittance of Overseas Contract Workers
by Mode of Remittance and by Area: 2008**

Area Total and Average Cash Remittance	Total	Banks	Agency and or Local Office	Friends and or Co-workers	Door to Door	Others
Philippines						
Total cash remittance (In million pesos)	98,749	75,440	3,926	533	11,425	7,426
Average cash remittance (In thousand pesos)	64	69	81	31	52	42
National Capital Region						
Total cash remittance (In million pesos)	15,628	11,721	742	26	2,466	674
Average cash remittance (In thousand pesos)	72	76	61	28	61	69
Luzon ^{1/}						
Total cash remittance (In million pesos)	56,163	40,982	2,144	267	8,373	4,397
Average cash remittance (In thousand pesos)	66	74	121	32	51	43
Visayas						
Total cash remittance (In million pesos)	15,600	13,033	724	116	447	1,281
Average cash remittance (In thousand pesos)	60	64	59	54	49	38
Mindanao						
Total cash remittance (In million pesos)	11,357	9,703	316	124	139	1,074
Average cash remittance (In thousand pesos)	50	54	54	22	25	34

Notes: Details may not add up to totals due to rounding.

1/ Excluding NCR

The estimates cover overseas Filipinos whose departure occurred within the last five years and who are working or had worked abroad during the past six months (April to September) of the survey period.

Source: National Statistics Office, 2008 Survey on Overseas Filipinos

**TABLE 8 Total and Average Cash Remittance of Male and Female Overseas Contract Workers
by Place of Work: 2008**

Area Place of Work	Total Cash Remittance (In million pesos)			Average Cash Remittance (In thousand pesos)		
	Both Sexes	Male	Female	Both Sexes	Male	Female
Philippines	98,749	64,439	34,310	64	78	47
Africa	2,134	2,017	117	96	105	41
Asia	69,805	44,443	25,362	57	73	41
East Asia	16,607	8,753	7,855	56	74	44
Hong Kong	3,194	283	2,910	32	57	31
Japan	5,425	3,542	1,884	74	76	71
Taiwan	3,714	1,742	1,972	53	60	48
Other countries in East Asia (China, South Korea, etc.)	4,274	3,185	1,089	77	84	61
Southeast and South Central Asia	8,431	5,206	3,225	61	107	36
Malaysia	1,012	708	304	55	74	34
Singapore	4,632	2,127	2,504	48	82	36
Other countries in Southeast and South Central Asia (Brunei, etc)	2,787	2,371	417	114	181	37
Western Asia	44,767	30,484	14,282	56	69	40
Kuwait	3,213	1,637	1,576	57	105	39
Qatar	4,893	4,088	805	58	66	36
Saudi Arabia	18,845	14,801	4,044	56	64	38
United Arab Emirates	12,355	7,564	4,791	56	72	41
Other countries in Western Asia (Bahrain, Israel, Lebanon, Jordan, etc)	5,460	2,394	3,066	59	88	47
Australia	2,768	2,447	321	79	88	44
Europe	12,828	8,926	3,902	95	91	105
North and South America	11,067	6,499	4,569	85	88	81
Other countries	147	108	39	59	58	60
Country not reported	-	-	-	-	-	-

Notes: Details may not add up to totals due to rounding.

The estimates cover overseas Filipinos whose departure occurred within the last five years and who are working or had worked abroad during the past six months (April to September) of the survey period.

Source: National Statistics Office, 2008 Survey on Overseas Filipinos

**TABLE 8A Total and Average Cash Remittance of Male and Female Overseas Contract Workers
by Place of Work and by Area: 2008**

Area Place of Work	Total Cash Remittance (In million pesos)			Average Cash Remittance (In thousand pesos)		
	Both Sexes	Male	Female	Both Sexes	Male	Female
National Capital Region	15,628	10,581	5,048	72	81	58
Africa	386	377	8	77	82	20
Asia	10,511	6,908	3,603	68	78	55
Australia	403	360	43	68	74	39
Europe	1,775	1,254	521	77	73	90
North and South America	2,515	1,681	834	87	106	64
Other countries	39	-	39	60	-	60
Country not reported	-	-	-	-	-	-
Luzon ^{1/}	56,163	37,398	18,766	66	80	49
Africa	1,440	1,385	56	121	127	55
Asia	40,142	26,609	13,533	59	75	41
Australia	1,560	1,304	256	74	83	48
Europe	7,182	4,805	2,377	112	107	123
North and South America	5,839	3,296	2,543	86	83	90
Other countries	-	-	-	-	-	-
Country not reported	-	-	-	-	-	-
Visayas	15,600	10,110	5,490	60	71	47
Africa	213	170	43	55	61	40
Asia	10,156	6,232	3,924	52	64	40
Australia	655	637	18	120	126	44
Europe	2,743	2,061	682	80	80	81
North and South America	1,748	924	823	82	78	86
Other countries	85	85	-	73	73	-
Country not reported	-	-	-	-	-	-
Mindanao	11,357	6,351	5,006	50	74	36
Africa	95	85	10	72	88	27
Asia	8,996	4,694	4,302	46	72	33
Australia	150	146	4	58	69	8
Europe	1,128	806	323	82	79	89
North and South America	965	597	368	80	94	65
Other countries	23	23	-	33	33	-
Country not reported	-	-	-	-	-	-

Notes: Details may not add up to totals due to rounding.

1/ Excluding NCR

The estimates cover overseas Filipinos whose departure occurred within the last five years and who are working or had worked abroad during the past six months (April to September) of the survey period.

Source: National Statistics Office, 2008 Survey on Overseas Filipinos

**TABLE 9 Total and Average Cash Remittance of Male and Female Overseas Contract Workers,
by Major Occupation Group and by Area: 2008**

Area Major Occupation Group	Total Cash Remittance (In million pesos)			Average Cash Remittance (In thousand pesos)		
	Both Sexes	Male	Female	Both Sexes	Male	Female
Philippines	98,749	64,439	34,310	64	78	47
Officials of government and special-interest organizations, corporate executives, managers managing proprietors and supervisors	5,038	4,583	455	113	127	53
Professionals	14,377	9,470	4,907	97	117	72
Technicians and associate professionals	8,150	6,253	1,897	84	96	59
Clerks	5,111	2,797	2,313	60	78	47
Service workers and shop and market sales worker	13,917	5,836	8,081	67	78	61
Farmers, forestry workers and fishermen	598	598	0	97	97	
Trades and related workers	17,695	16,914	781	67	69	46
Plant and machine operators and assemblers	15,288	14,319	968	72	71	79
Laborers and unskilled workers	18,576	3,669	14,908	38	45	37
Special occupations	-	-	-	-	-	-
National Capital Region	15,628	10,581	5,048	72	81	58
Officials of government and special-interest organizations, corporate executives, managers managing proprietors and supervisors	1,331	1,185	147	109	114	78
Professionals	2,779	1,804	975	92	99	82
Technicians and associate professionals	1,376	927	449	86	117	56
Clerks	1,528	1,103	425	72	85	50
Service workers and shop and market sales worker	2,601	1,136	1,465	67	73	62
Farmers, forestry workers and fishermen	87	87	-	178	178	-
Trades and related workers	2,734	2,433	301	69	71	55
Plant and machine operators and assemblers	1,997	1,694	303	69	64	107
Laborers and unskilled workers	1,194	211	983	40	42	40
Special occupations	-	-	-	-	-	-
Luzon ^{1/}	56,163	37,398	18,766	66	80	49
Officials of government and special-interest organizations, corporate executives, managers managing proprietors and supervisors	2,938	2,717	221	122	142	45
Professionals	7,489	5,667	1,821	109	134	68
Technicians and associate professionals	4,246	3,250	996	86	95	66
Clerks	2,624	1,409	1,215	60	80	47
Service workers and shop and market sales worker	8,678	3,676	5,002	73	83	67
Farmers, forestry workers and fishermen	470	470	-	98	98	-
Trades and related workers	11,013	10,595	418	67	68	45
Plant and machine operators and assemblers	7,813	7,212	601	73	73	79
Laborers and unskilled workers	10,893	2,401	8,492	40	47	39
Special occupations	-	-	-	-	-	-

TABLE 9 - - - concluded

Area Major Occupation Group	Total Cash Remittance (In million pesos)			Average Cash Remittance (In thousand pesos)		
	Both Sexes	Male	Female	Both Sexes	Male	Female
Visayas	15,600	10,110	5,490	60	71	47
Officials of government and special-interest organizations, corporate executives, managers managing proprietors and supervisors	364	338	26	78	93	25
Professionals	1,942	847	1,095	69	63	75
Technicians and associate professionals	1,524	1,303	221	78	92	41
Clerks	435	74	362	45	37	47
Service workers and shop and market sales worker	1,612	617	995	62	75	56
Farmers, forestry workers and fishermen	9	9	-	24	24	-
Trades and related workers	2,724	2,724	-	67	67	-
Plant and machine operators and assemblers	3,783	3,749	34	75	76	39
Laborers and unskilled workers	3,208	450	2,757	40	40	40
Special occupations	-	-	-	-	-	-
Mindanao	11,357	6,351	5,006	50	74	36
Officials of government and special-interest organizations, corporate executives, managers managing proprietors and supervisors	405	344	61	110	116	88
Professionals	2,166	1,151	1,015	101	162	71
Technicians and associate professionals	1,004	773	231	79	87	62
Clerks	523	212	311	49	63	42
Service workers and shop and market sales worker	1,027	407	620	45	62	38
Farmers, forestry workers and fishermen	32	32	-	60	60	-
Trades and related workers	1,224	1,163	61	66	71	30
Plant and machine operators and assemblers	1,695	1,664	31	62	63	31
Laborers and unskilled workers	3,282	606	2,676	30	44	28
Special occupations	-	-	-	-	-	-

Notes: Details may not add up to totals due to rounding.

1/ Excluding NCR

The estimates cover overseas Filipinos whose departure occurred within the last five years and who are working or had worked abroad during the past six months (April to September) of the survey period.

Source: National Statistics Office, 2008 Survey on Overseas Filipinos



APPENDICES

SOF FORM 1

Republic of the Philippines
National Statistics Office
Manila

Survey on Overseas Filipinos
OCTOBER 2008

Set ____ of ____ sets

Geographic Identification Codes

Province _____
Mun./City _____
Bgy _____
EA _____
SHSN _____
HCN _____

Design Codes

Replicate
Stratum
PSU No.
Rotation Group

GENERAL INSTRUCTIONS: Encircle the appropriate code for pre-coded answers then enter the appropriate code in the box provided at the right hand portion of the questionnaire. For write-in entries, enter the actual response of the respondent.

Q1	What is the name of the family member who is/was abroad? <i>(Take note that the reference period is from October 2003 to September 2008)</i>	Line No. in ISH Form 2	<input type="text"/>
Q2	What is ____'s relationship to the head of this household? 01 Head 04 Brother/Sister 06 Grandson/ 08 Other Relative 02 Spouse 05 Son-in-law/ Granddaughter 09 Non-Relative 03 Son/Daughter Daughter-in-law 07 Father/Mother		<input type="text"/>
Q3	Is ____ male or female? 1 Male 2 Female		<input type="text"/>
Q4	How old is ____ on his/her last birthday?		<input type="text"/>
Q5	How many times did ____ leave for abroad during the last five years (Oct. 2003 to Sept. 2008)?		<input type="text"/>
Q6	Now, I would like to ask some information about the date of his/her (last) departure. When did ____ last leave? Month _____ Year _____	Month Year	<input type="text"/>
Q7	What is ____'s marital status as of his/her (last) departure? 1 Single 3 Widowed 5 Unknown 2 Married 4 Separated/Divorced 6 Annulled		<input type="text"/>
Q8	What is the highest grade completed by ____ at the time of his/her (last) departure? 00 No Grade Completed 03 High School Undergraduate For College Graduate 01 Elementary Undergraduate 04 High School Graduate or Higher, specify 02 Elementary Graduate 05 College Undergraduate		<input type="text"/>
Q9	What was ____'s usual occupation in the Philippines before he/she (last) left?		<input type="text"/>
Q10	What was ____'s primary reason for leaving the country (last time)? 1 Contract Worker 5 Student 2 Other Contract Worker 6 Immigrant 3 Work with Phil. Embassy/Consulate Abroad 7 Official Mission 4 Tourist 8 Others (specify) _____		<input type="text"/>
Q11	In what country did ____ stay when he/she left?		<input type="text"/>
Q12	For how many months did ____ stay / intend to stay abroad (last time)? No. of Months _____ Not Expected to Return 88		<input type="text"/>

Q13	Did _____ work or had a job/business at anytime during his last stay abroad?	<input type="checkbox"/> <div style="display: flex; justify-content: space-around;"> 1 YES 2 NO, (SKIP TO Q16) </div>
Q14	What kind of work did _____ do abroad?	<div style="border: 1px solid black; width: 40px; height: 20px; display: inline-block;"></div> <div style="border: 1px solid black; width: 40px; height: 20px; display: inline-block;"></div> <div style="border: 1px solid black; width: 40px; height: 20px; display: inline-block;"></div> <div style="border: 1px solid black; width: 40px; height: 20px; display: inline-block;"></div>
Q15	How many months has _____ worked/been working abroad during the last 5 years (Oct. 2003 to Sept. 2008)?	<div style="border: 1px solid black; width: 40px; height: 20px; display: inline-block;"></div> <div style="border: 1px solid black; width: 40px; height: 20px; display: inline-block;"></div>
Q16	Has _____ returned home since his/her (last) departure?	<input type="checkbox"/> <div style="display: flex; justify-content: space-around;"> YES 2 NO, (SKIP TO Q18) </div>
Q17	When did _____ return home?	<div style="display: flex; justify-content: space-between;"> <div> Month _____ Year _____ </div> <div> Month Year </div> </div> <div style="border: 1px solid black; width: 40px; height: 20px; display: inline-block;"></div> <div style="border: 1px solid black; width: 40px; height: 20px; display: inline-block;"></div> <div style="border: 1px solid black; width: 40px; height: 20px; display: inline-block;"></div> <div style="border: 1px solid black; width: 40px; height: 20px; display: inline-block;"></div>
Q18	When is _____ expected to return home?	<div style="display: flex; justify-content: space-between;"> <div> Month _____ Year _____ Not Expected to Return 888888 </div> <div> Month Year </div> </div> <div style="border: 1px solid black; width: 40px; height: 20px; display: inline-block;"></div> <div style="border: 1px solid black; width: 40px; height: 20px; display: inline-block;"></div> <div style="border: 1px solid black; width: 40px; height: 20px; display: inline-block;"></div> <div style="border: 1px solid black; width: 40px; height: 20px; display: inline-block;"></div>
Q19	Now, I would like to ask about the cash remittance received by the family from _____. By cash remittance, I mean money/checks sent either thru local or foreign source or both. Did the family receive any cash remittance from _____ during the period April to September 2008?	<input type="checkbox"/> <div style="display: flex; justify-content: space-around;"> 1 YES 2 NO, (SKIP TO Q23) </div>
Q20	How much cash remittance was received by the family during the month of (ENTER AMOUNT AND CURRENCY)	<div style="display: flex; justify-content: space-between;"> <div> APRIL _____ JULY _____ </div> <div> MAY _____ AUG. _____ </div> <div> JUNE _____ SEPT. _____ </div> </div> <div style="border: 1px solid black; width: 40px; height: 20px; display: inline-block;"></div> <div style="border: 1px solid black; width: 40px; height: 20px; display: inline-block;"></div> <div style="border: 1px solid black; width: 40px; height: 20px; display: inline-block;"></div> <div style="border: 1px solid black; width: 40px; height: 20px; display: inline-block;"></div>
Q21	How do you usually receive the remittance during the period April to September 2008?	<div style="display: flex; justify-content: space-around;"> 1 Bank 3 Friends/Co-worker 5 Others (specify) _____ </div> <div style="display: flex; justify-content: space-around;"> 2 Agency/Local Office 4 Door-to-door </div> <input type="checkbox"/>
Q22	How was the remittance of _____ spent? Please provide the estimated percent share with the following choices:	<div style="display: flex; justify-content: space-between;"> <div> <input type="checkbox"/> 1 consumption <input type="checkbox"/> 2 investments </div> <div> <div style="border: 1px solid black; width: 40px; height: 20px; display: inline-block;"></div> % <div style="border: 1px solid black; width: 40px; height: 20px; display: inline-block;"></div> % </div> <div> <input type="checkbox"/> 3 savings <input type="checkbox"/> 4 others, specify _____ </div> <div> <div style="border: 1px solid black; width: 40px; height: 20px; display: inline-block;"></div> % <div style="border: 1px solid black; width: 40px; height: 20px; display: inline-block;"></div> % </div> </div>
Q23	CHECK Q17 AND Q18: Did the person return during the period April to September 2008?	<input type="checkbox"/> <div style="display: flex; justify-content: space-around;"> 1 YES 2 NO, (SKIP TO Q25) </div>
Q24	How much cash did he/she bring home during the period April to September 2008? (ENTER AMOUNT AND CURRENCY)	<div style="border: 1px solid black; width: 40px; height: 20px; display: inline-block;"></div> <div style="border: 1px solid black; width: 40px; height: 20px; display: inline-block;"></div> <div style="border: 1px solid black; width: 40px; height: 20px; display: inline-block;"></div> <div style="border: 1px solid black; width: 40px; height: 20px; display: inline-block;"></div>
Q25	Did the family receive goods/products (e.g. Appliances, jewelry, etc.) from _____ during the period April to September 2008?	<input type="checkbox"/> <div style="display: flex; justify-content: space-around;"> 1 YES 2 NO, (END INTERVIEW) </div>
Q26	What is the total imputed value of these goods/products? (ENTER AMOUNT IN PESOS)	<div style="display: flex; justify-content: space-between;"> <div> A. Appliances _____ B. Jewelry _____ C. Chocolates and Canned Goods _____ D. Alcoholic Beverages _____ </div> <div> E. Cigarettes _____ F. Personal Care & Effects _____ G. Clothing and Other Wear _____ H. Others _____ </div> </div> <div style="border: 1px solid black; width: 40px; height: 20px; display: inline-block;"></div> <div style="border: 1px solid black; width: 40px; height: 20px; display: inline-block;"></div> <div style="border: 1px solid black; width: 40px; height: 20px; display: inline-block;"></div> <div style="border: 1px solid black; width: 40px; height: 20px; display: inline-block;"></div>
END INTERVIEW		
COMPUTATION / REMARKS		CERTIFICATION I hereby certify that the data in this questionnaire were obtained and reviewed by me personally and in accordance with instructions. _____ Signature Over Printed Name of Enumerator _____ Date Accomplished

SOF FORM 2 - CONTROL FORM Republic of the Philippines NATIONAL STATISTICS OFFICE Manila Survey on Overseas Filipinos OCTOBER 2008					CERTIFICATION I hereby certify under oath that the data set forth herein were personally obtained by me in accordance with instructions _____ Signature Over Printed Name of Enumerator _____ Date Accomplished		Sheet ____ of ____ Sheets GEOGRAPHIC IDENTIFICATION PROV _____ MUN/CITY _____ BGY _____ EA <div style="float: right; border: 1px solid black; width: 40px; height: 40px; margin-top: 10px;"> <div style="border: 1px solid black; width: 15px; height: 15px; margin: 2px;"></div> <div style="border: 1px solid black; width: 15px; height: 15px; margin: 2px;"></div> <div style="border: 1px solid black; width: 15px; height: 15px; margin: 2px;"></div> <div style="border: 1px solid black; width: 15px; height: 15px; margin: 2px;"></div> <div style="border: 1px solid black; width: 15px; height: 15px; margin: 2px;"></div> <div style="border: 1px solid black; width: 15px; height: 15px; margin: 2px;"></div> <div style="border: 1px solid black; width: 15px; height: 15px; margin: 2px;"></div> <div style="border: 1px solid black; width: 15px; height: 15px; margin: 2px;"></div> <div style="border: 1px solid black; width: 15px; height: 15px; margin: 2px;"></div> <div style="border: 1px solid black; width: 15px; height: 15px; margin: 2px;"></div> </div>	
Line Number	SHSN	HCN	Is there a family member who left for abroad at anytime during the period October 2003 to September 2008? 1 - YES 2 - NO	No. of Overseas Filipinos in the HH	Line No. of OF in ISH Form 2	Name of Overseas Filipino (Last Name, First Name)	Remarks	
(1)	(2)	(3)	(4)	(5)	(6)	(7)	(8)	
01								
02								
03								
04								
05								
06								
07								
08								
09								
10								
11								
12								
13								
14								
15								
16								
17								
18								
19								
20								
21								
22								
23								
24								
25								
26								
27								
28								
29								
30								
TOTAL								