

LECS3 Data Model

Contents

LECS3 DATA MODEL	1
1 INTRODUCTION	3
2 ENTITY LIST	3
2.1 HOUSEHOLDS	5
2.1.1 Graph	5
2.1.2 Columns	6
2.1.3 Constraints	6
2.2 HHCOMPOSITION	7
2.2.1 Graph	7
2.2.2 Columns	8
2.2.3 Constraints	8
2.3 PARENTS	10
2.3.1 Graph	10
2.3.2 Columns	11
2.3.3 Constraints	12
2.4 EDUCATION	13
2.4.1 Graph	13
2.4.2 Columns	14
2.4.3 Constraints	15
2.5 LABOR1	18
2.5.1 Graph	18
2.5.2 Columns	19
2.5.3 Constraints	20
2.6 LABOR2	21
2.6.1 Graph	21
2.6.2 Columns	22
2.6.3 Constraints	22
2.7 LABOR3	23
2.7.1 Graph	23
2.7.2 Columns	24
2.7.3 Constraints	25
2.8 VICTIMIZATION	26
2.8.1 Graph	26
2.8.2 Columns	27
2.8.3 Constraints	28
2.9 NUTRITION1	29
2.9.1 Graph	29
2.9.2 Columns	30
2.9.3 Constraints	31
2.10 NUTRITION2	32
2.10.1 Graph	32
2.10.2 Columns	33
2.10.3 Constraints	33
2.11 HEALTHCHECK	34
2.11.1 Graph	34
2.11.2 Columns	35
2.11.3 Constraints	35
2.12 HHDURABLES	36
2.12.1 Graph	36
2.12.2 Columns	36
2.12.3 Constraints	37

2.13	HOUSING	38
2.13.1	Graph	38
2.13.2	Columns.....	39
2.13.3	Constraints	40
2.14	CONSTRUCTION	41
2.14.1	Graph	41
2.14.2	Columns.....	41
2.14.3	Constraints	45
2.15	HHBUSINESS1	46
2.15.1	Graph	46
2.15.2	Columns.....	47
2.15.3	Constraints	47
2.16	HHBUSINESS2	47
2.16.1	Graph	48
2.16.2	Columns.....	49
2.16.3	Constraints	49
2.17	AGRICULTURE1	50
2.17.1	Graph	50
2.17.2	Columns.....	51
2.17.3	Constraints	52
2.18	AGRICULTURE2	53
2.18.1	Graph	53
2.18.2	Columns.....	54
2.18.3	Constraints	54
2.19	AGRICULTURE3	55
2.19.1	Graph	55
2.19.2	Columns.....	56
2.19.3	Constraints	56
2.20	AGRICULTURE4	57
2.20.1	Graph	57
2.20.2	Columns.....	58
2.20.3	Constraints	59
2.21	AGRICULTURE5	60
2.21.1	Graph	60
2.21.2	Columns.....	61
2.21.3	Constraints	62
2.22	AGRICULTURE6	63
2.22.1	Graph	63
2.22.2	Columns.....	64
2.22.3	Constraints	64
2.23	AGRICULTURE7	65
2.23.1	Graph	65
2.23.2	Columns.....	65
2.23.3	Constraints	65
2.24	AGRICULTURE8	67
2.24.1	Graph	67
2.24.2	Columns.....	68
2.24.3	Constraints	69
2.25	AGRICULTURE9	70
2.25.1	Graph	70
2.25.2	Columns.....	71
2.25.3	Constraints	72
2.26	HEALTH.....	73
2.26.1	Graph	73
2.26.2	Columns.....	74
2.26.3	Constraints	76
2.27	HHPURCHASE.....	78
2.27.1	Graph	78
2.27.2	Columns.....	79
2.27.3	Constraints	79

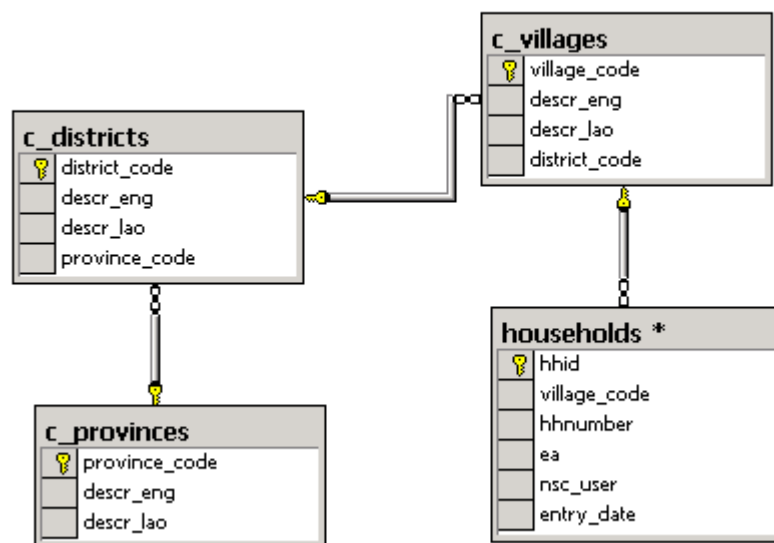
2.28	HHSELLING	80
2.28.1	Graph	80
2.28.2	Columns.....	81
2.28.3	Constraints	81
2.29	INCOME	82
2.29.1	Graph	82
2.29.2	Columns.....	83
2.29.3	Constraints	83
2.30	HHBORROWING.....	84
2.30.1	Graph	84
2.30.2	Columns.....	85
2.30.3	Constraints	86
2.31	HHLENDING	87
2.31.1	Graph	87
2.31.2	Columns.....	88
2.31.3	Constraints	88
2.32	DIARY.....	89
2.32.1	Graph	89
2.32.2	Columns.....	90
2.32.3	Constraints	90
2.33	TIMEUSE	91
2.33.1	Graph	91
2.33.2	Columns.....	92
2.33.3	Constraints	92

1 Introduction

2 Entity List

2.1 Households

2.1.1 Graph



2.1.2 Columns

Data Item	Data type	Values	Description	Short name
hhid	Int	Identity (100000-)	Primary key	hhid
village_code	char	C_villages	Village code, 7 characters	vcode
hhnumber	char	1-	Enumeration among households in a village	hhnumber
noofmembers	int	Number	Number of household members	
ea	int	1-2	Urban rural	ea
nsc_user	varchar	String	User name of data entry staff	nscuser
entry_date	datetime	Date	Date when information was entered	entrydate

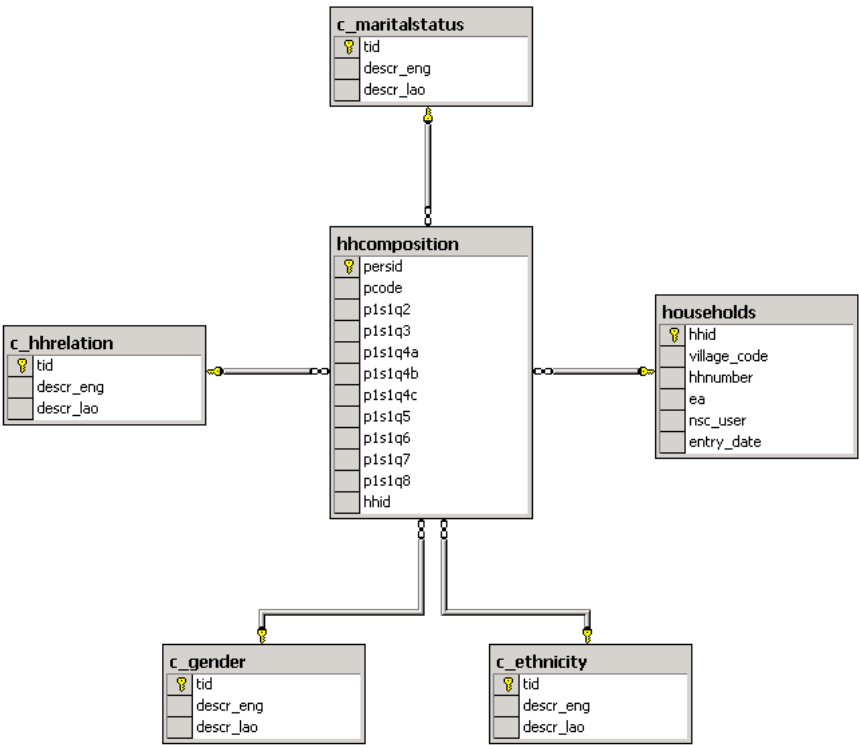
2.1.3 Constraints

Type	Name	Keys
DEFAULT on column entry_date	DF_households_crdate	(getdate())
DEFAULT on column nsc_user	DF_households_creator	('Unknown')
FOREIGN KEY	FK_households_c_villages	village_code
		REFERENCES lecs3dev.dbo.c_villages (village_code)
UNIQUE (non-clustered)	IX_households_unique	village_code, hhnumber
PRIMARY KEY (clustered)	PK_households	hhid

2.2 hhComposition

Keep information about all household members.

2.2.1 Graph



2.2.2 Columns

Data Item	Data type	Values	Description	Short name
persid	Int	Identity (500000-)	Primary key	persid
pcode	Int	From the questionnaire, 1-	Identification number for members of the household	pcode
p1s1q2	Int	C_hhrelation	Relationship to household head	hhrelation
p1s1q3	Int	C_gender	Gender	gender
p1s1q4a	Int	1-31	Day of birth	dayofbirth
p1s1q4b	Int	1-12	Month of birth	monthofbirth
p1s1q4c	Int	1880-2002	Year of birth	yearofbirth
p1s1q5	Int	0-120	Persons age at last birthday	age
p1s1q6	Int	0-55	Children born in 1999 or later, how many months	childmonths
p1s1q7	Int	C_maritalstatus	Marital status	maritalstatus
p1s1q8	Int	C_ethnicity	Ethnic origin	ethnicity
hhid	Int		Foreign Key	

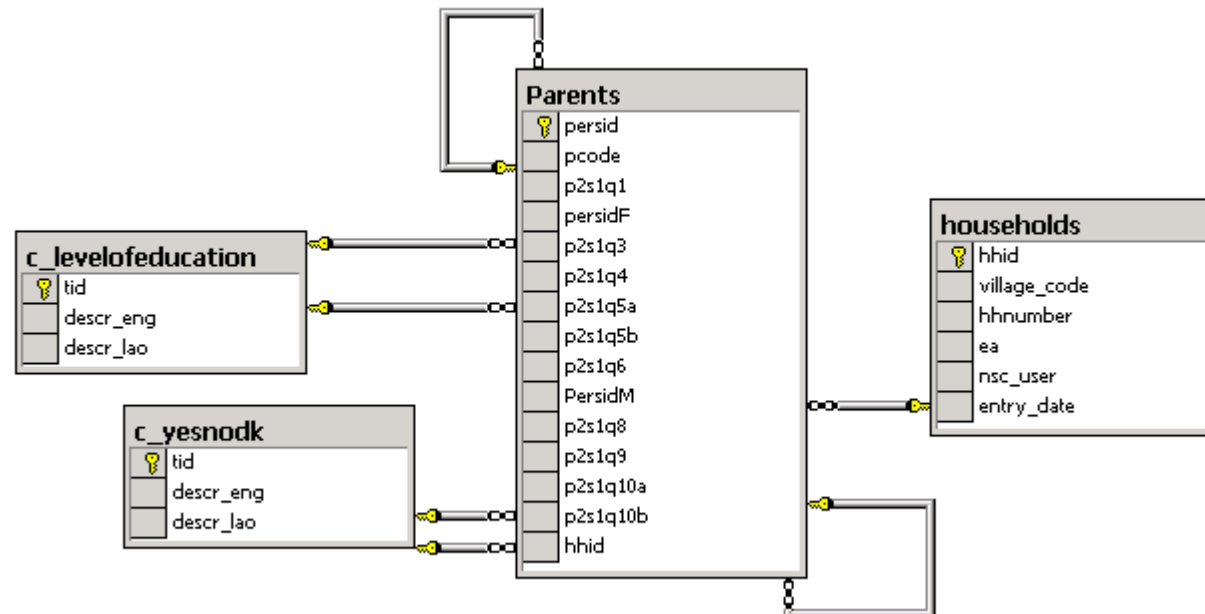
2.2.3 Constraints

Type	Name	Keys
CHECK on column p1s1q4a	CK_hhcomposition_p1s1q4a	([p1s1q4a] >= 1 and [p1s1q4a] <= 31)
CHECK on column p1s1q4b	CK_hhcomposition_p1s1q4b	([p1s1q4b] >= 1 and [p1s1q4b] <= 12)
CHECK on column p1s1q4c	CK_hhcomposition_p1s1q4c	([p1s1q4c] >= 1880 and [p1s1q4c] <= 2002)
CHECK on column p1s1q5	CK_hhcomposition_p1s1q5	([p1s1q5] >= 0 and [p1s1q5] <= 120)
CHECK on column p1s1q6	CK_hhcomposition_p1s1q6	([p1s1q6] >= 0 and [p1s1q6] <= 55)
FOREIGN KEY	FK_hhcomposition_c_ethnicity	p1s1q8
		REFERENCES lecs3dev.dbo.c_ethnicity (tid)

FOREIGN KEY	FK_hhcomposition_c_gender	p1s1q3
		REFERENCES lecs3dev.dbo.c_gender (tid)
FOREIGN KEY	FK_hhcomposition_c_hhrelation	p1s1q2
		REFERENCES lecs3dev.dbo.c_hhrelation (tid)

2.3 Parents

2.3.1 Graph



2.3.2 Columns

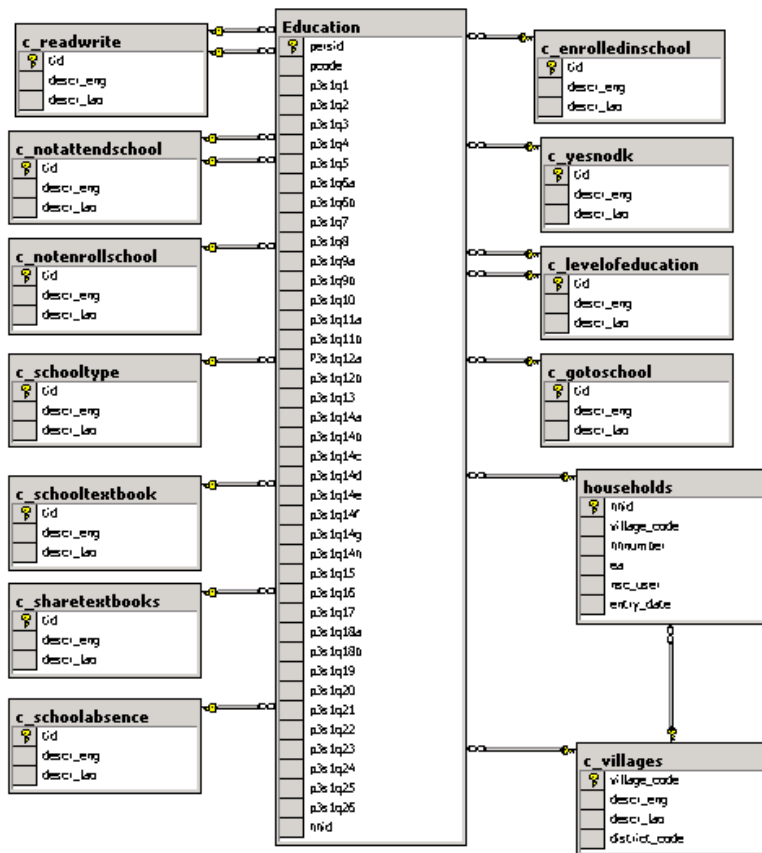
Data Item	Data type	Values	Description	Short Name
Persid	Int	See hhComposition	Primary key	persid
Pcode	Int	See hhComposition	From HHcomposition	pcode
p2s1q1	Int	1-2	Is father living in the household	finhousehold
persidF	Int	foreign key	Fathers persid	persidF
p2s1q3	Int	1-2	Is father still alive	fAlive
p2s1q4	Int	c_yesnodk	Did father attend school	fattschool
p2s1q5a	Int	c_levelofeducation	Highest level of education completed for father	flvledu
p2s1q5b	Int	1-5	Highest class	fhighclass
p2s1q6	Int	1-2	Is mother living in the household	minhousehold
PersidM	Int	foreign key	Mothers persid	persidM
p2s1q8	Int	1-2	Is mother still alive	mAlive
p2s1q9	Int	c_yesnodk	Did mother attend school	mattschool
p2s1q10a	Int	c_levelofeducation	Highest level of education completed for mother	mlvledu
p2s1q10b	Int	1-5	Highest class	mhighclass
hhid	Int		foreign key	hhid

2.3.3 Constraints

Type	Name	Keys
CHECK on column p2s1q1	CK_Parents_p2s1q1	([p2s1q1] = 2 or [p2s1q1] = 1)
CHECK on column p2s1q10b	CK_Parents_p2s1q10b	([p2s1q10b] >= 1 and [p2s1q10b] <= 5)
CHECK on column p2s1q3	CK_Parents_p2s1q3	([p2s1q3] = 2 or [p2s1q3] = 1)
CHECK on column p2s1q5b	CK_Parents_p2s1q5b	([p2s1q5b] >= 1 and [p2s1q5b] <= 5)
CHECK on column p2s1q6	CK_Parents_p2s1q6	([p2s1q6] = 2 or [p2s1q6] = 1)
CHECK on column p2s1q8	CK_Parents_p2s1q8	([p2s1q8] = 2 or [p2s1q8] = 1)
FOREIGN KEY	FK_Parents_c_levelofeducation	p2s1q5a
		REFERENCES lecs3dev.dbo.c_levelofeducation (tid)
FOREIGN KEY	FK_Parents_c_levelofeducation1	p2s1q10a
		REFERENCES lecs3dev.dbo.c_levelofeducation (tid)
FOREIGN KEY	FK_Parents_c_yesnodk	p2s1q4
		REFERENCES lecs3dev.dbo.c_yesnodk (tid)
FOREIGN KEY	FK_Parents_c_yesnodk1	p2s1q9
		REFERENCES lecs3dev.dbo.c_yesnodk (tid)
FOREIGN KEY	FK_Parents_households	hhid
		REFERENCES lecs3dev.dbo.households (hhid)
FOREIGN KEY	FK_Parents_Parents	persidF
		REFERENCES lecs3dev.dbo.Parents (persid)
FOREIGN KEY	FK_Parents_Parents1	PersidM
		REFERENCES lecs3dev.dbo.Parents (persid)
UNIQUE (non-clustered)	IX_Parents_unique	hhid, pcode

2.4 Education

2.4.1 Graph



2.4.2 Columns

Data Item	Data type	Values	Description	Short Name
persid	int	See hhComposition	Primary key	persid
pcode	int	See hhComposition	From HHcomposition	pcode
p3s1q1	int	c_readwrite	Can person read a letter	read
p3s1q2	int	c_readwrite	Can person write a letter	write
p3s1q3	int	1-2	Have person ever been to school	beentoschool
p3s1q4	int	c_notattendschool	Main reason for never attend school	notattendschool
p3s1q5	int	1-2	Did person attend pre-school prior to beginning primary school	preschool
p3s1q6a	int	c_enrolledinschool	Are person enrolled in school now	enrolledinschool
p3s1q6b	int	c_yesnodk	Is person going back to school next semester	backtoschool
p3s1q7	int	c_notenrollschool	Why is person not enrolled in school now	notenrollschool
p3s1q8	int	year	In what year did person begun first class of primary school	beginschool
p3s1q9a	int	c_levelofeducation	What grade is person enrolled in now	gradenow
p3s1q9b	int	1-5	What class is person enrolled in now	classnow
p3s1q10	int	c_schooltype	What type of school is person attending now	typeofschool
p3s1q11a	nvarchar	String	Name of school	nameofschool
p3s1q11b	char	c_villages	Villagecode	vcode
P3s1q12a	int	c_levelofeducation	Highest grade completed	highestgrade
p3s1q12b	int	1-5	Highest class completed	highest class
p3s1q13	int	c_nottandendschool	Why not enrolled in school after primary school	notenrollafterprimary
p3s1q14a	int	Amount in Kip	Tuition and other fees	tuitionfee
p3s1q14b	int	Amount in Kip	Parent association fees	parentfee
p3s1q14c	int	Amount in Kip	Uniforms and other clothing	uniformcost
p3s1q14d	int	Amount in Kip	Textbooks	textbookcost
p3s1q14e	int	Amount in Kip	Other education materials	othermaterials

p3s1q14f	int	Amount in Kip	Meals, transportation and/or lodging	mealcost
p3s1q14g	int	Amount in Kip	Other expenses	otherexpenses
p3s1q14h	int	Amount in Kip	Total cost (only for checking) the real sum will be calculated when data is aggregated.	totalcost
p3s1q15	int	1-2	Did any people who are not members of the household pay for persons educational expenses	nohhmembers
p3s1q16	int	Amount in Kip	How much money did non household members pay for persons education	nohhmembersamount
p3s1q17	int	Kilometers	How far away is school	schooldistance
p3s1q18a	int	Hours	How many hours does it take person to come to school	toschoolhours
p3s1q18b	int	Minutes	How many minutes does it take person to come to school	toschoolminutes
p3s1q19	int	c_gotoschool	How does person go to school	schooltransport
p3s1q20	int	c_schooltextbook	Does person have a complete set of textbooks	completebooks
p3s1q21	int	1-2	Does person share this textbooks	sharetextbooks
p3s1q22	int	Hours	How many hours of homework in one week	homework
p3s1q23	int	1-2	Is person currently attending school	currentlyinschool
p3s1q24	int	Days	How many days has school been open the past 7 days	shoolopen
p3s1q25	int	Days	How many days have person attended school in the past 7 days	inschooldays
p3s1q26	int	c_schoolabsence	Reason for school absence	schoolabsence
hhid	int		Foreign key	

2.4.3 Constraints

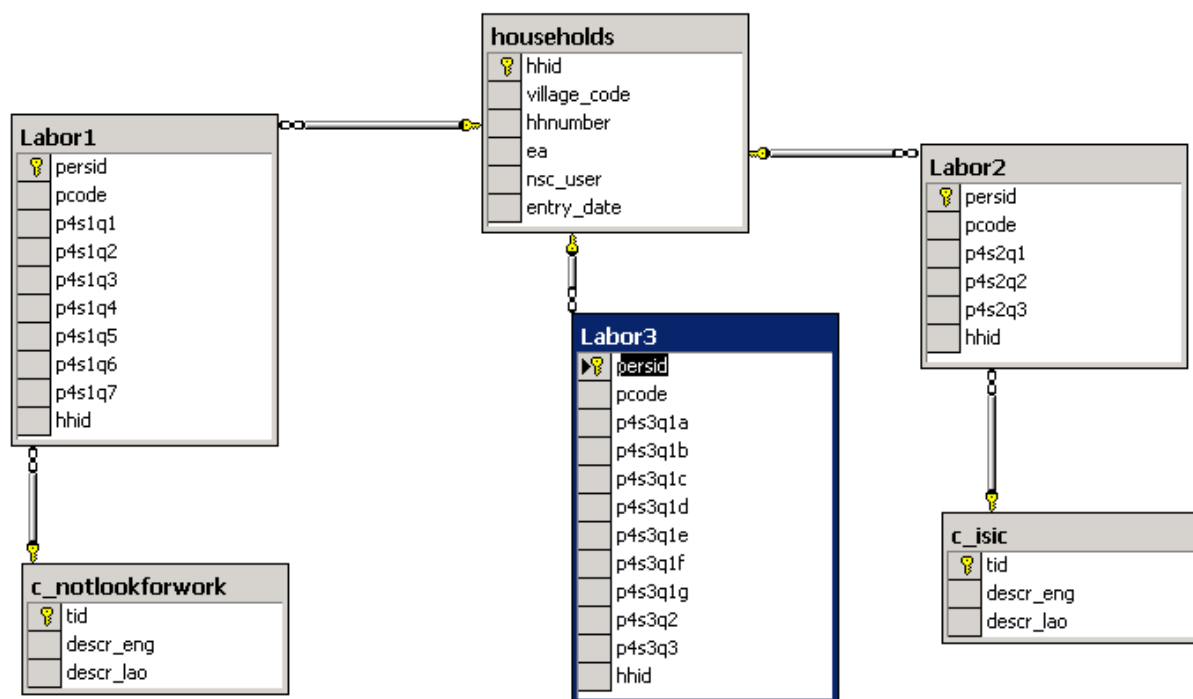
Type	Name	Keys
------	------	------

CHECK on column p3s1q15	CK_Education_p3s1q15	([p3s1q15] = 2 or [p3s1q15] = 1)
CHECK on column p3s1q18b	CK_Education_p3s1q18b	([p3s1q18b] < 60)
CHECK on column p3s1q22	CK_Education_p3s1q22	([p3s1q22] < 90)
CHECK on column p3s1q23	CK_Education_p3s1q23	([p3s1q23] = 2 or [p3s1q23] = 1)
CHECK on column p3s1q24	CK_Education_p3s1q24	([p3s1q24] >= 0 and [p3s1q24] <= 7)
CHECK on column p3s1q25	CK_Education_p3s1q25	([p3s1q25] >= 0 and [p3s1q25] <= 7)
CHECK on column p3s1q3	CK_Education_p3s1q3	([p3s1q3] = 2 or [p3s1q3] = 1)
CHECK on column p3s1q5	CK_Education_p3s1q5	([p3s1q5] = 2 or [p3s1q5] = 1)
FOREIGN KEY	FK_Education_c_enrolledinschool	p3s1q6a
		REFERENCES lecs3dev.dbo.c_enrolledinschool (tid)
FOREIGN KEY	FK_Education_c_gotoschool	p3s1q19
		REFERENCES lecs3dev.dbo.c_gotoschool (tid)
FOREIGN KEY	FK_Education_c_levelofeducation	p3s1q9a
		REFERENCES lecs3dev.dbo.c_levelofeducation (tid)
FOREIGN KEY	FK_Education_c_levelofeducation1	P3s1q12a
		REFERENCES lecs3dev.dbo.c_levelofeducation (tid)
FOREIGN KEY	FK_Education_c_notattendschool	p3s1q4
		REFERENCES lecs3dev.dbo.c_notattendschool (tid)
FOREIGN KEY	FK_Education_c_notattendschool1	p3s1q13
		REFERENCES lecs3dev.dbo.c_notattendschool (tid)
FOREIGN KEY	FK_Education_c_notenrollschool	p3s1q7
		REFERENCES lecs3dev.dbo.c_notenrollschool (tid)
FOREIGN KEY	FK_Education_c_readwrite	p3s1q1
		REFERENCES lecs3dev.dbo.c_readwrite (tid)
FOREIGN KEY	FK_Education_c_readwrite1	p3s1q2
		REFERENCES lecs3dev.dbo.c_readwrite (tid)
FOREIGN KEY	FK_Education_c_schoolabsence	p3s1q26
		REFERENCES lecs3dev.dbo.c_schoolabsence (tid)

FOREIGN KEY	FK_Education_c_schooltextbook	p3s1q20
		REFERENCES lecs3dev.dbo.c_schooltextbook (tid)
FOREIGN KEY	FK_Education_c_schooltype	p3s1q10
		REFERENCES lecs3dev.dbo.c_schooltype (tid)
FOREIGN KEY	FK_Education_c_sharetextbooks	p3s1q21
		REFERENCES lecs3dev.dbo.c_sharetextbooks (tid)
FOREIGN KEY	FK_Education_c_villages	p3s1q11b
		REFERENCES lecs3dev.dbo.c_villages (village_code)
FOREIGN KEY	FK_Education_c_yesnodk	p3s1q6b
		REFERENCES lecs3dev.dbo.c_yesnodk (tid)
FOREIGN KEY	FK_Education_households	hhid
		REFERENCES lecs3dev.dbo.households (hhid)
PRIMARY KEY (clustered)	PK_Education	persid

2.5 Labor1

2.5.1 Graph



2.5.2 Columns

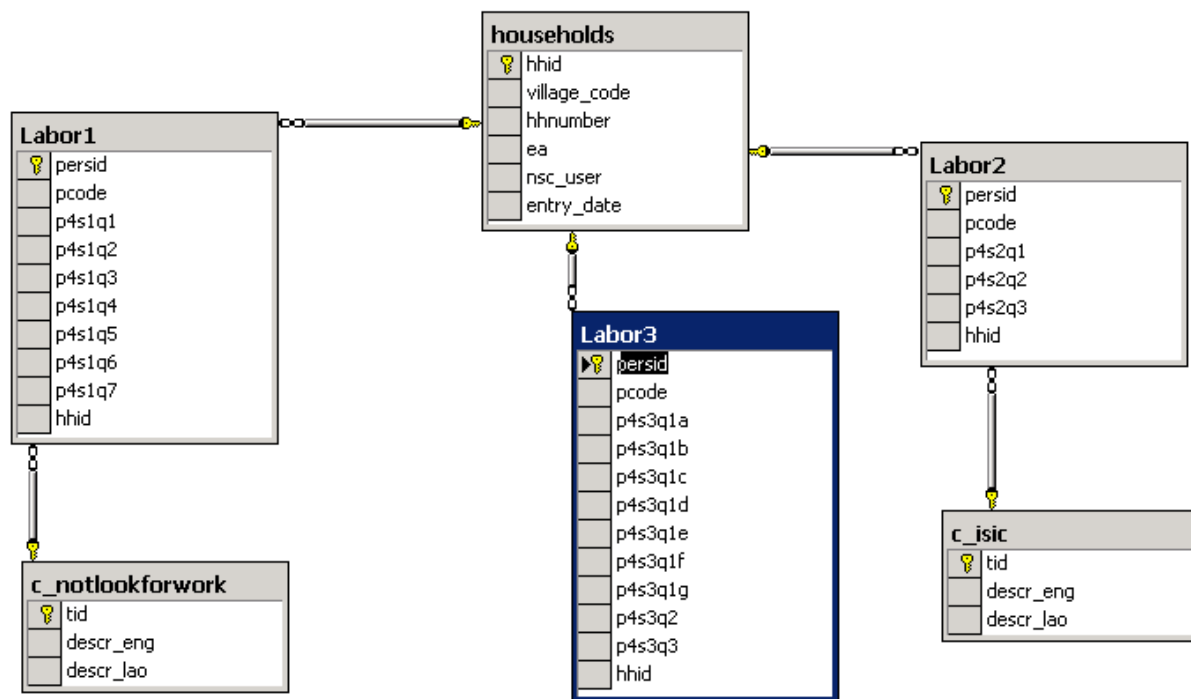
Data Item	Data type	Values	Description	Short Name
persid	int	See hhComposition	Primary key	persid
pcode	int	See hhComposition	From HHcomposition	pcode
p4s1q1	int	1-2	Worked during last 7 days in own account or in business belonging to someone in the household	wrkl7home
p4s1q2	int	1-2	Worked during last 7 days on a farm operated by the household	wrkl7farm
p4s1q3	int	1-2	Worked during last 7 days in an enterprise, public sector or any other individual	wrkl7other
p4s1q4	int	1-2	Any work last 7 days	wrkl7days
p4s1q5	int	1-2	Have a permanent job though no work last 7 days	permanentwork
p4s1q6	int	1-2	Have person looked for work in the last 7 days	lookforwork
p4s1q7	int	c_notlookforwork	Main reason why person did not look for work in the last 7 days	notlookforwork
hhid	int		Foreign key	

2.5.3 Constraints

Type	Name	Keys
CHECK on column p4s1q1	CK_Labor1_p4s1q1	([p4s1q1] = 2 or [p4s1q1] = 1)
CHECK on column p4s1q2	CK_Labor1_p4s1q2	([p4s1q2] = 2 or [p4s1q2] = 1)
CHECK on column p4s1q3	CK_Labor1_p4s1q3	([p4s1q3] = 2 or [p4s1q3] = 1)
CHECK on column p4s1q4	CK_Labor1_p4s1q4	([p4s1q4] = 2 or [p4s1q4] = 1)
CHECK on column p4s1q5	CK_Labor1_p4s1q5	([p4s1q5] = 2 or [p4s1q5] = 1)
CHECK on column p4s1q6	CK_Labor1_p4s1q6	([p4s1q6] = 2 or [p4s1q6] = 1)
FOREIGN KEY	FK_Labor1_c_notlookforwork	p4s1q7
		REFERENCES lecs3dev.dbo.c_notlookforwork (tid)
FOREIGN KEY	FK_Labor1_households	hhid
		REFERENCES lecs3dev.dbo.households (hhid)
PRIMARY KEY (clustered)	PK_Labor	persid

2.6 Labor2

2.6.1 Graph



2.6.2 Columns

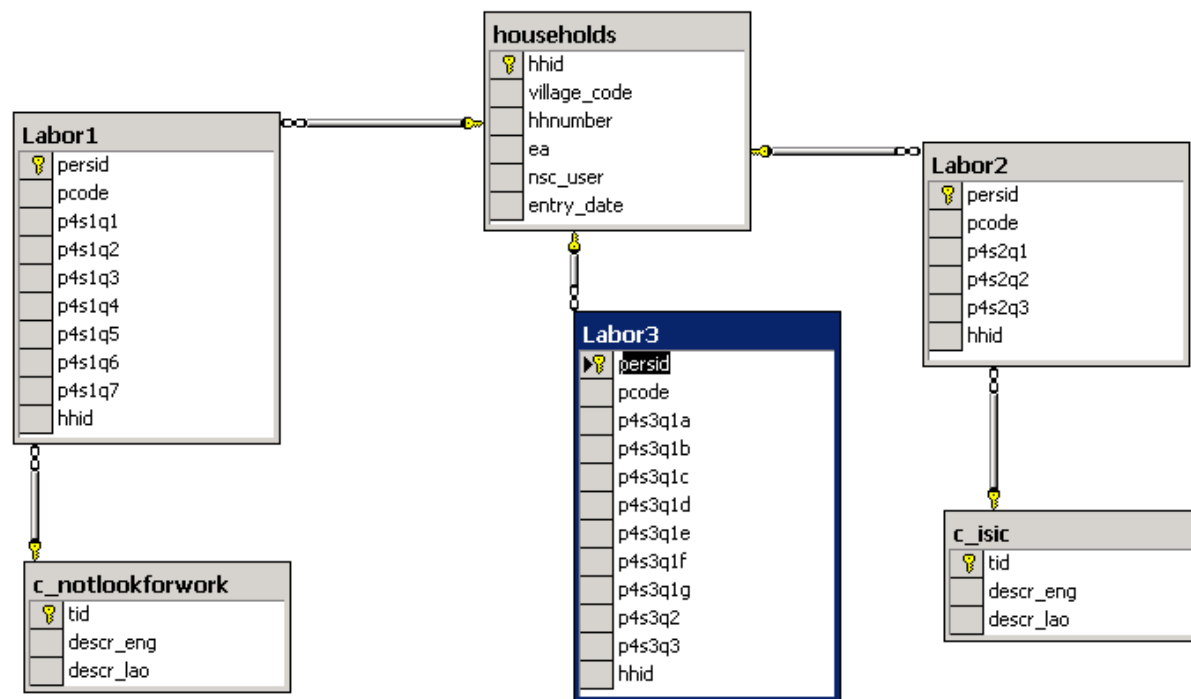
Data Item	Data type	Values	Description	Short Name
persid	int	See hhComposition	Primary key	persid
pcode	int	See hhComposition	From HHcomposition	pcode
p4s2q1	char	c_isic	ISIC code	isic
p4s2q2	int	Days	How many days in the last 7 days did person do this activity	dayslastweek
p4s2q3	int	Hours	How many hours in the last 7 days did person do this activity	hourslastweek
hhid	int		Foreign Key	

2.6.3 Constraints

Type	Name	Keys
CHECK on column p4s2q2	CK_Labor2_p4s2q2	([p4s2q2] >= 0 and [p4s2q2] <= 7)
CHECK on column p4s2q3	CK_Labor2_p4s2q3	([p4s2q3] < 168)
FOREIGN KEY	FK_Labor2_c_isic	p4s2q1
		REFERENCES lecs3dev.dbo.c_isic (tid)
FOREIGN KEY	FK_Labor2_households	hhid
		REFERENCES lecs3dev.dbo.households (hhid)
PRIMARY KEY (clustered)	PK_Labor2	persid

2.7 Labor3

2.7.1 Graph



2.7.2 Columns

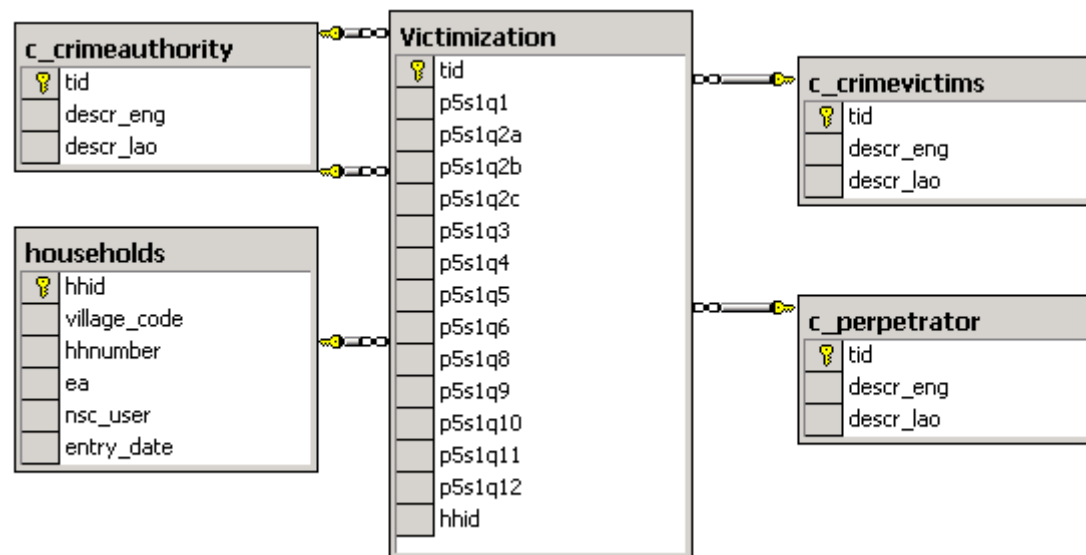
Data Item	Data type	Values	Description	Short Name
persid	int	See hhComposition	Primary key	persid
pcode	int	See hhComposition	From HHcomposition	pcode
p4s3q1a	int	0-12	Number of months working as a paid employee, employeeer, self-employed or unpaid family worker, not farming	employeewrk
p4s3q1b	int	0-12	Number of months working in farming including forestry and fishing	farmwrk
p4s3q1c	int	0-12	Unemployed and looking for work	unemployed
p4s3q1d	int	0-12	Student	student
p4s3q1e	int	0-12	Housework or childcare	housework
p4s3q1f	int	0-12	Retired or too old	retired
p4s3q1g	int	0-12	Disabled or long-term illness	disabled
p4s3q2	int	1-2	Have person been a Buddhist monk or nun	monk
p4s3q3	int	Days	Days spent in temple as monk or nun	monkdays
hhid	int		Foreign Key	

2.7.3 Constraints

Type	Name	Keys
CHECK on column p4s3q1a	CK_Labor3_p4s3q1a	([p4s3q1a] >= 0 and [p4s3q1a] <= 12)
CHECK on column p4s3q1b	CK_Labor3_p4s3q1b	([p4s3q1b] >= 0 and [p4s3q1b] <= 12)
CHECK on column p4s3q1c	CK_Labor3_p4s3q1c	([p4s3q1c] >= 0 and [p4s3q1c] <= 12)
CHECK on column p4s3q1d	CK_Labor3_p4s3q1d	([p4s3q1d] >= 0 and [p4s3q1d] <= 12)
CHECK on column p4s3q1e	CK_Labor3_p4s3q1e	([p4s3q1e] >= 0 and [p4s3q1e] <= 12)
CHECK on column p4s3q1f	CK_Labor3_p4s3q1f	([p4s3q1f] >= 0 and [p4s3q1f] <= 12)
CHECK on column p4s3q1g	CK_Labor3_p4s3q1g	([p4s3q1g] >= 0 and [p4s3q1g] <= 12)
CHECK on column p4s3q2	CK_Labor3_p4s3q2	([p4s3q2] = 2 or [p4s3q2] = 1)
FOREIGN KEY	FK_Labor3_households	hhid
		REFERENCES lecs3dev.dbo.households (hhid)
PRIMARY KEY (clustered)	PK_Labor3	persid

2.8 Victimization

2.8.1 Graph



2.8.2 Columns

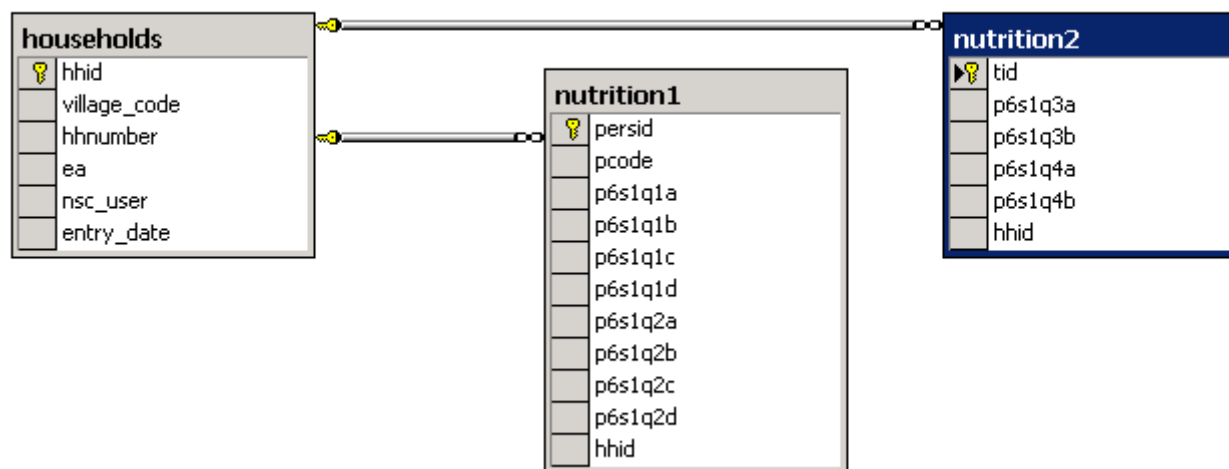
Data Item	Data type	Values	Description	Short Name
tid	int	Identity	Primary Key	tid
p5s1q1	int	1-2	Has any member of the household suffered from theft, burglary or robbery in the last 12 months	membersuffered
p5s1q2a	int	1-2	Was it burglary	burglary
p5s1q2b	int	1-2	Was it Robbery	robbery
p5s1q2c	int	1-2	Was it theft	theft
p5s1q3	int	1-2	Was it reported to some authority	reportauthority
p5s1q4	int	c_crimeauthority	Which authority was crime reported to	whichauthority
p5s1q5	int	1-2	Did the event go to court procedure	courtprocedure
p5s1q6	int	1-2	Has any member of the household suffered from violence in the last 12 months	violence
p5s1q8	int	c_crimevictims	Was the victims men or women	victims
p5s1q9	int	1-2	Was it reported to some authority	reportauthority2
p5s1q10	int	c_crimeauthority	Which authority was crime reported to	whichauthority2
p5s1q11	int	1-2	Did the event go to court procedure	courtprocedure2
p5s1q12	int	c_perpetrator	Who committed the crime	perpetrator
hhid	int		Foreign Key	

2.8.3 Constraints

Type	Name	Keys
CHECK on column p5s1q1	CK_Victimization_p5s1q1	([p5s1q1] = 2 or [p5s1q1] = 1)
CHECK on column p5s1q11	CK_Victimization_p5s1q11	([p5s1q11] = 2 or [p5s1q11] = 1)
CHECK on column p5s1q2a	CK_Victimization_p5s1q2a	([p5s1q2a] = 2 or [p5s1q2a] = 1)
CHECK on column p5s1q2b	CK_Victimization_p5s1q2b	([p5s1q2b] = 2 or [p5s1q2b] = 1)
CHECK on column p5s1q2c	CK_Victimization_p5s1q2c	([p5s1q2c] = 2 or [p5s1q2c] = 1)
CHECK on column p5s1q3	CK_Victimization_p5s1q3	([p5s1q3] = 2 or [p5s1q3] = 1)
CHECK on column p5s1q5	CK_Victimization_p5s1q5	([p5s1q5] = 2 or [p5s1q5] = 1)
CHECK on column p5s1q6	CK_Victimization_p5s1q6	([p5s1q6] = 2 or [p5s1q6] = 1)
CHECK on column p5s1q9	CK_Victimization_p5s1q9	([p5s1q9] = 2 or [p5s1q9] = 1)
FOREIGN KEY	FK_Victimization_c_crimeauthority	p5s1q4
		REFERENCES lecs3dev.dbo.c_crimeauthority (tid)
FOREIGN KEY	FK_Victimization_c_crimeauthority1	p5s1q10
		REFERENCES lecs3dev.dbo.c_crimeauthority (tid)
FOREIGN KEY	FK_Victimization_c_crimevictims	p5s1q8
		REFERENCES lecs3dev.dbo.c_crimevictims (tid)
FOREIGN KEY	FK_Victimization_c_perpetrator	p5s1q12
		REFERENCES lecs3dev.dbo.c_perpetrator (tid)
FOREIGN KEY	FK_Victimization_households	hhid
		REFERENCES lecs3dev.dbo.households (hhid)
PRIMARY KEY (clustered)	PK_Victimization	tid

2.9 Nutrition1

2.9.1 Graph



2.9.2 Columns

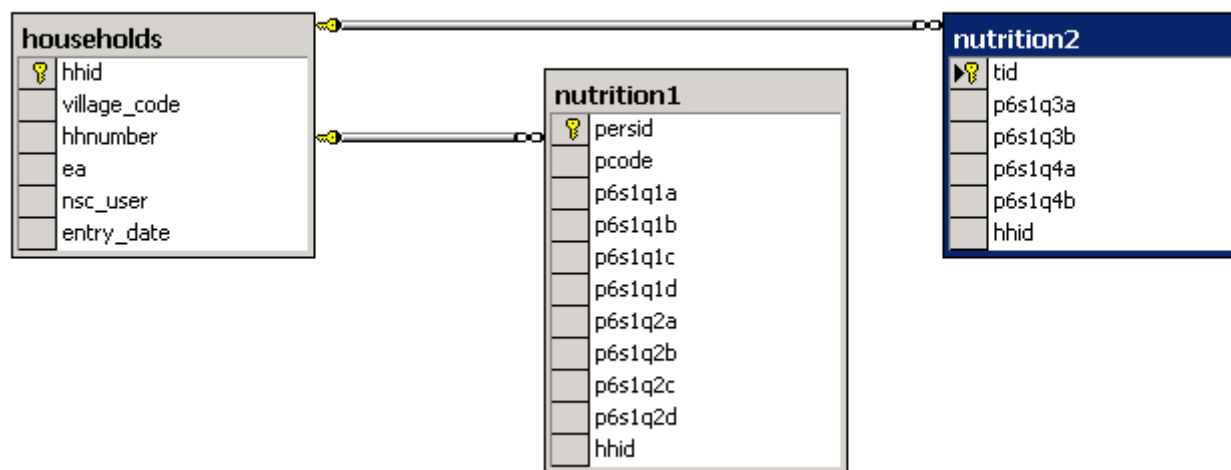
Data Item	Data type	Values	Description	Short Name
persid	int	See hhComposition	Primary key	persid
pcode	int	See hhComposition	From HHcomposition	pcode
p6s1q1a	int	0-99	Balls of glutinous rice for breakfast	glbreakfast
p6s1q1b	int	0-99	Balls of glutinous rice for lunch	gllunch
p6s1q1c	int	0-99	Balls of glutinous rice for dinner	gldinner
p6s1q1d	int	0-99	Total balls of glutinous rice	totalgl
p6s1q2a	int	0-99	Balls of ordinary rice for breakfast	ordbreakfast
p6s1q2b	int	0-99	Balls of ordinary rice for lunch	ordlunch
p6s1q2c	int	0-99	Balls of ordinary rice for dinner	orddinner
p6s1q2d	int	0-99	Total balls of ordinary rice	totalord
hhid	int		Foreign Key	

2.9.3 Constraints

Type	Name	Keys
CHECK on column p6s1q1a	CK_nutrition1_p6s1q1a	([p6s1q1a] >= 0 and [p6s1q1a] <= 99)
CHECK on column p6s1q1b	CK_nutrition1_p6s1q1b	([p6s1q1b] >= 0 and [p6s1q1b] <= 99)
CHECK on column p6s1q1c	CK_nutrition1_p6s1q1c	([p6s1q1c] >= 0 and [p6s1q1c] <= 99)
CHECK on column p6s1q1d	CK_nutrition1_p6s1q1d	([p6s1q1d] >= 0 and [p6s1q1d] <= 99)
CHECK on column p6s1q2a	CK_nutrition1_p6s1q2a	([p6s1q2a] >= 0 and [p6s1q2a] <= 99)
CHECK on column p6s1q2b	CK_nutrition1_p6s1q2b	([p6s1q2b] >= 0 and [p6s1q2b] <= 99)
CHECK on column p6s1q2c	CK_nutrition1_p6s1q2c	([p6s1q2c] >= 0 and [p6s1q2c] <= 99)
CHECK on column p6s1q2d	CK_nutrition1_p6s1q2d	([p6s1q2d] >= 0 and [p6s1q2d] <= 99)
FOREIGN KEY	FK_nutrition1_households	hhid
		REFERENCES lecs3dev.dbo.households (hhid)
PRIMARY KEY (clustered)	PK_Nutrition	persid

2.10 Nutrition2

2.10.1 Graph



2.10.2 Columns

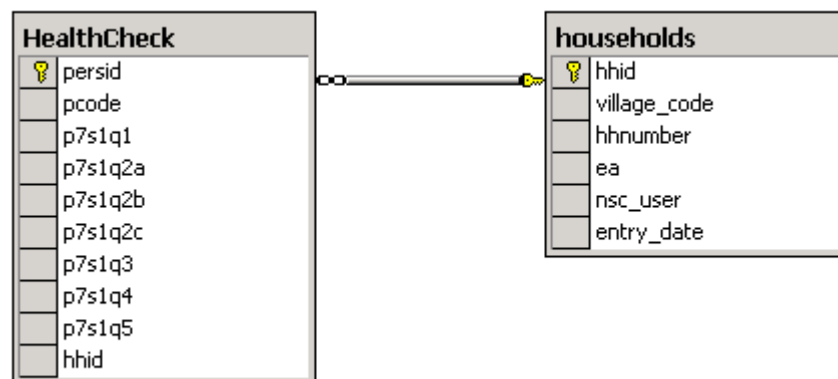
Data Item	Data type	Values	Description	Short Name
tid	int	Identity	Primary Key	tid
p6s1q3a	int	KG	How much meat does the household consume per week	meat1 week
p6s1q3b	int	KG	How much fish does the household consume per week	fish1 week
p6s1q4a	int	KG	How much vegetables does the household consume per week	vegetable1 week
p6s1q4b	int	KG	How much fruits does the household consume per week	fruit1 week
hhid	int		Foreign Key	

2.10.3 Constraints

Type	Name	Keys
FOREIGN KEY	FK_nutrition2_households	hhid
		REFERENCES lecs3dev.dbo.households (hhid)
PRIMARY KEY (clustered)	PK_nutrition2	tid

2.11 Healthcheck

2.11.1 Graph



2.11.2 Columns

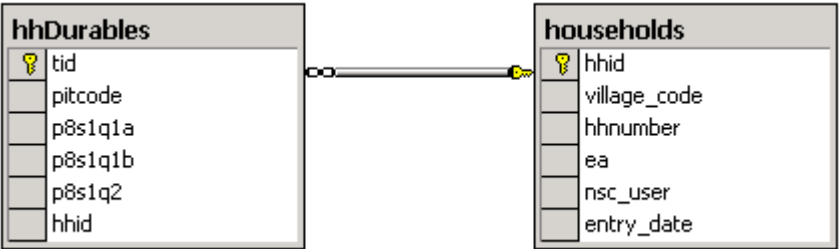
Data Item	Data type	Values	Description	Short Name
persid	int	persid	int	See hhComposition
pcode	int	pcode	int	See hhComposition
p7s1q1	int	1-3	Gender	helthgender
p7s1q2a	int	1-31	Day of measurement	daymsr
p7s1q2b	int	1-12	Month of measurement	monthmsr
p7s1q2c	int	Year	Year of measurement	yearmsr
p7s1q3	int	CM	Height measured	height
p7s1q4	int	1-2	Standing up or laying down	standup
p7s1q5	int	KG	Measured weight	weight
hhid	int		Foreign Key	

2.11.3 Constraints

Type	Name	Keys
CHECK on column p7s1q1	CK_HealthCheck_p7s1q1	([p7s1q1] = 3 or ([p7s1q1] = 2 or [p7s1q1] = 1))
CHECK on column p7s1q2a	CK_HealthCheck_p7s1q2a	([p7s1q2a] >= 1 and [p7s1q2a] <= 31)
CHECK on column p7s1q2b	CK_HealthCheck_p7s1q2b	([p7s1q2b] >= 1 and [p7s1q2b] <= 12)
CHECK on column p7s1q2c	CK_HealthCheck_p7s1q2c	([p7s1q2c] >= 1900 and [p7s1q2c] <= 2003)
CHECK on column p7s1q4	CK_HealthCheck_p7s1q4	([p7s1q4] = 2 or [p7s1q4] = 1)
FOREIGN KEY	FK_HealthCheck_households	hhid
		REFERENCES lecs3dev.dbo.households (hhid)
PRIMARY KEY (clustered)	PK_Children	persid

2.12 hhDurables

2.12.1 Graph



2.12.2 Columns

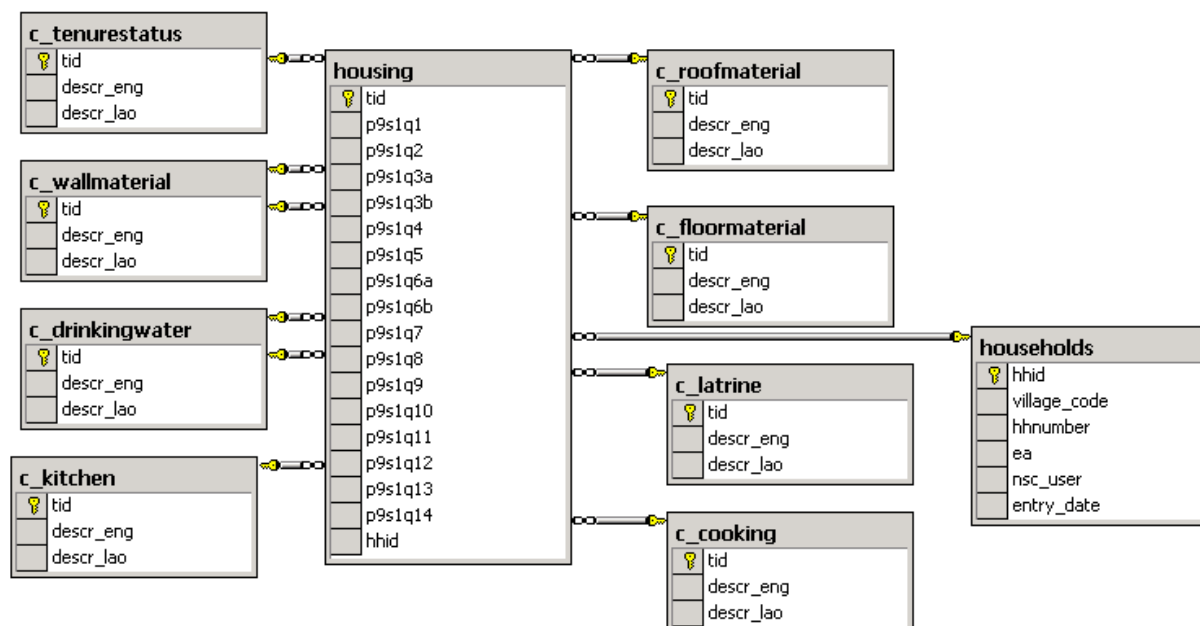
Data Item	Data type	Values	Description	Short Name
tid	int	Identity	Primary Key	tid
pitcode	char	a-ae	Durable goods	pitcode
p8s1q1a	int	1-2	Have access to	accessdurable
p8s1q1b	int	1-2	Owned	owndurable
p8s1q2	int	Amount KIP	How much to receive if selling the good	selldurable
hhid	int		Foreign Key	

2.12.3 Constraints

Type	Name	Keys
CHECK on column p8s1q1a	CK_hhDurables_p8s1q1a	([p8s1q1a] = 2 or [p8s1q1a] = 1)
CHECK on column p8s1q1b	CK_hhDurables_p8s1q1b	([p8s1q1b] = 2 or [p8s1q1b] = 1)
FOREIGN KEY	FK_hhDurables_households	hhid
		REFERENCES lecs3dev.dbo.households (hhid)
PRIMARY KEY (clustered)	PK_hhPosseDurable	tid

2.13 Housing

2.13.1 Graph



2.13.2 Columns

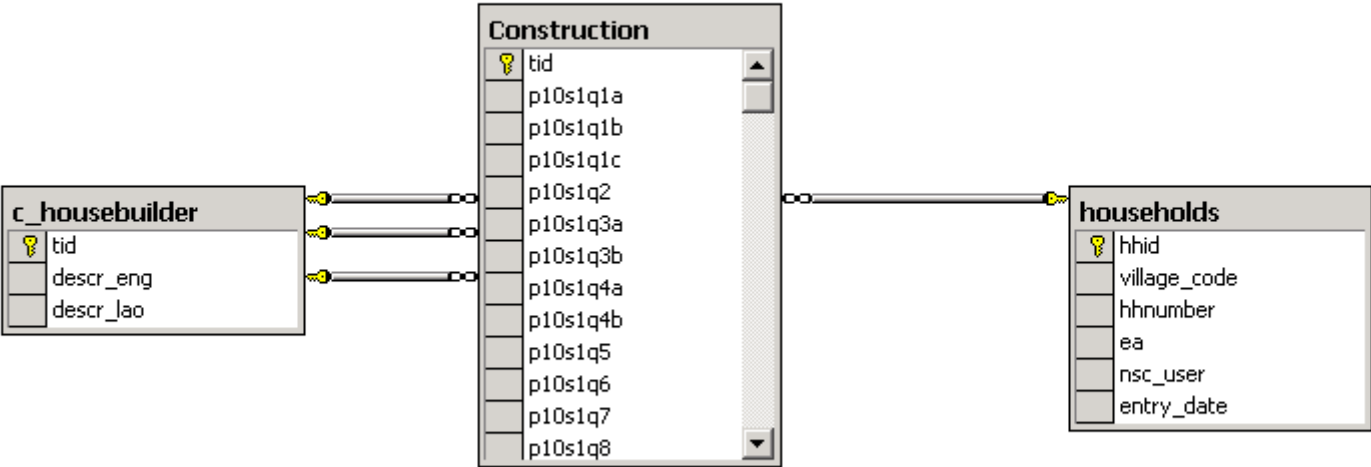
Data Item	Data type	Values	Description	Short Name
tid	int	Identity	Primary Key	tid
p9s1q1	int	c_tenurestatus	What is the tenure status	tenurestatus
p9s1q2	int	Amount KIP	Rent cost for a similar house	rentcostsimilar
p9s1q3a	int	c_wallmaterial	Primary construction material for external walls	primwalls
p9s1q3b	int	c_wallmaterial	Secondary construction material for external walls	secwalls
p9s1q4	int	c_roofmaterial	Major material of roof	roofmaterial
p9s1q5	int	c_floormaterial	Primary material of the floor	floormaterial
p9s1q6a	int	Years	How many years have household lived in this dwelling	yearindwelling
p9s1q6b	int	1-12	How many months have household lived in this dwelling	monthindwelling
p9s1q7	int	SQM	Square meter of living area	livingarea
p9s1q8	int	c_drinkingwater	Main source of drinking water in the rainy season	waterrainy
p9s1q9	int	Meters	Distance to drinking water in the rainy season	dstwaterrainy
p9s1q10	int	c_drinkingwater	Main source of drinking water in the dry season	waterdry
p9s1q11	int	Meters	Distance to drinking water in the dry season	dstwaterdry
p9s1q12	int	c_latrine	Kind of latrine mainly used	latrine
p9s1q13	int	c_kitchen	Kind of kitchen mainly used	kitchen
p9s1q14	int	c_cooking	Main source of energy for cooking	cookingsource
hhid	int		Foreign Key	

2.13.3 Constraints

Type	Name	Keys
FOREIGN KEY	FK_housing_c_cooking	p9s1q14
		REFERENCES lecs3dev.dbo.c_cooking (tid)
FOREIGN KEY	FK_housing_c_drinkingwater	p9s1q8
		REFERENCES lecs3dev.dbo.c_drinkingwater (tid)
FOREIGN KEY	FK_housing_c_drinkingwater1	p9s1q10
		REFERENCES lecs3dev.dbo.c_drinkingwater (tid)
FOREIGN KEY	FK_housing_c_floormaterial	p9s1q5
		REFERENCES lecs3dev.dbo.c_floormaterial (tid)
FOREIGN KEY	FK_housing_c_kitchen	p9s1q13
		REFERENCES lecs3dev.dbo.c_kitchen (tid)
FOREIGN KEY	FK_housing_c_latrine	p9s1q12
		REFERENCES lecs3dev.dbo.c_latrine (tid)
FOREIGN KEY	FK_housing_c_roofmaterial	p9s1q4
		REFERENCES lecs3dev.dbo.c_roofmaterial (tid)
FOREIGN KEY	FK_housing_c_tenurestatus	p9s1q1
		REFERENCES lecs3dev.dbo.c_tenurestatus (tid)
FOREIGN KEY	FK_housing_c_wallmaterial	p9s1q3a
		REFERENCES lecs3dev.dbo.c_wallmaterial (tid)
FOREIGN KEY	FK_housing_c_wallmaterial1	p9s1q3b
		REFERENCES lecs3dev.dbo.c_wallmaterial (tid)
FOREIGN KEY	FK_housing_households	hhid
		REFERENCES lecs3dev.dbo.households (hhid)
PRIMARY KEY (clustered)	PK_hCondictions	tid

2.14 Construction

2.14.1 Graph



2.14.2 Columns

Data Item	Data type	Values	Description	Short name
tid	int	Identity	Primary Key	

p10s1q1a	int	1-2	Has anybody in the household built an own house or made an extension of existing houses concerning: Residential building	residentialbuilding
p10s1q1b	int	1-2	Has anybody in the household built an own house or made an extension of existing houses concerning: Agricultural building	agribuilding
p10s1q1c	int	1-2	Has anybody in the household built an own house or made an extension of existing houses concerning: Business building	businessbuilding
p10s1q2	int	1-2	Kind of construction residential building	constructionres
p10s1q3a	int	Year	Year when construction work started for residential building	startyearres
p10s1q3b	int	0-12	Month when construction work started for residential building	startmonthres
p10s1q4a	int	Year	What year start people to live in residential building	startliveyearres
p10s1q4b	int	0-12	What month start people to live in residential building	startlivemonthres
p10s1q5	int	c_housebuilder	Who built the for residential building	housebuilderres
p10s1q6	int	Amount KIP	How much was the labour cost for the residential building	labourcostres
p10s1q7	int	Amount KIP	How much was spent on materials for the residential building	materialcostres
p10s1q8	int	Amount KIP	Total cost for residential building	totalcostres
p10s1q9	int	Amount KIP	Estimated value of non-hired labour for extension works on residential building	labourhhcostresx
p10s1q10	int	Amount KIP	Estimated cost for completed extension work on residential building	estcostresx
p10s1q11	int	Amount KIP	How much was spent on materials for the	materialcostresx

			extension work on the residential building	
p10s1q12	int	Amount KIP	How much was the labour cost for the extension work on the residential building	labourcostresx
p10s1q13	int	Amount KIP	Total cost for the extension work on the residential building	totalcostresx
p10s1q14	int	1-2	Kind of construction for agricultural building	constructionagr
p10s1q15a	int	Year	Year when construction work started for agricultural building	startyearagr
p10s1q15b	int	0-12	Month when construction work started for agricultural building	startmonthagr
p10s1q16a	int	Year	What year start people to live in agricultural building	startliveyearagr
p10s1q16b	int	0-12	What month start people to live in agricultural building	startlivemonthagr
p10s1q17	int	c_housebuilder	Who built the for agricultural building	housebuilderagr
p10s1q18	int	Amount KIP	How much was the labour cost for the agricultural building	labourcostagr
p10s1q19	int	Amount KIP	How much was spent on materials for the agricultural building	materialcostagr
p10s1q20	int	Amount KIP	Total cost for agricultural building	totalcostagr
p10s1q21	int	Amount KIP	Estimated value of non-hired labour for extension works on agricultural building	labourhhcostagrx
p10s1q22	int	Amount KIP	Estimated cost for completed extension work on agricultural building	estcostagrx
p10s1q23	int	Amount KIP	How much was spent on materials for the extension work on the agricultural building	materialcostagrx
p10s1q24	int	Amount KIP	How much was the labour cost for the extension work on the agricultural building	labourcostagrx
p10s1q25	int	Amount KIP	Total cost for the extension work on the	totalcostagrx

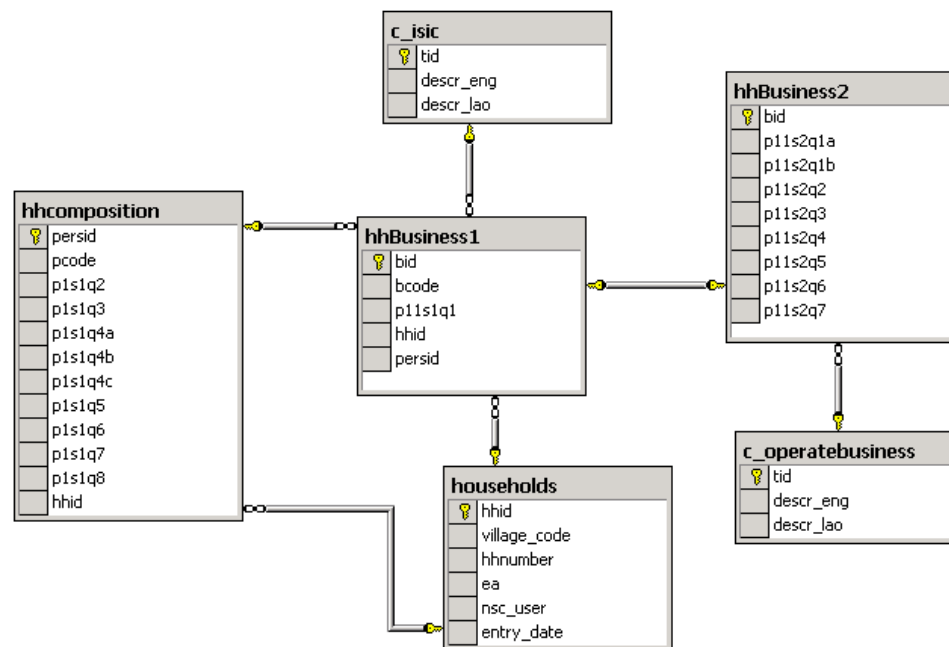
			agricultural building	
p10s1q26	int	1-2	Kind of construction for business building	constructionbus
p10s1q27a	int	Year	Year when construction work started for business building	startyearbus
p10s1q27b	int	0-12	Month when construction work started for business building	startmonthbus
p10s1q28a	int	Year	What year start people to live in business building	startliveyearbus
p10s1q28b	int	0-12	What month start people to live in business building	startlivemonthbus
p10s1q29	int	c_housebuilder	Who built the for business building	housebuilderbus
p10s1q30	int	Amount KIP	How much was the labour cost for the business building	labourcostbus
p10s1q31	int	Amount KIP	How much was spent on materials for the business building	materialcostbus
p10s1q32	int	Amount KIP	Total cost for business building	totalcostbus
p10s1q33	int	Amount KIP	Estimated value of non-hired labour for extension works on business building	labourhhcostbusx
p10s1q34	int	Amount KIP	Estimated cost for completed extension work on business building	estcostbusx
p10s1q35	int	Amount KIP	How much was spent on materials for the extension work on the business building	materialcostbusx
p10s1q36	int	Amount KIP	How much was the labour cost for the extension work on the business building	labourcostbusx
p10s1q37	int	Amount KIP	Total cost for the extension work on the business building	totalcostbusx
hhid	int		Foreign Key	

2.14.3 Constraints

Type	Name	Keys
CHECK on column p10s1q14	CK_Construction_p10s1q14	([p10s1q14] = 2 or [p10s1q14] = 1)
CHECK on column p10s1q15b	CK_Construction_p10s1q15b	([p10s1q15b] >= 0 and [p10s1q15b] <= 12)
CHECK on column p10s1q16b	CK_Construction_p10s1q16b	([p10s1q16b] >= 0 and [p10s1q16b] <= 12)
CHECK on column p10s1q1a	CK_Construction_p10s1q1a	([p10s1q1a] = 2 or [p10s1q1a] = 1)
CHECK on column p10s1q1b	CK_Construction_p10s1q1b	([p10s1q1b] = 2 or [p10s1q1b] = 1)
CHECK on column p10s1q1c	CK_Construction_p10s1q1c	([p10s1q1c] = 2 or [p10s1q1c] = 1)
CHECK on column p10s1q2	CK_Construction_p10s1q2	([p10s1q2] = 2 or [p10s1q2] = 1)
CHECK on column p10s1q26	CK_Construction_p10s1q26	([p10s1q26] = 2 or [p10s1q26] = 1)
CHECK on column p10s1q27b	CK_Construction_p10s1q27b	([p10s1q27b] >= 0 and [p10s1q27b] <= 12)
CHECK on column p10s1q28b	CK_Construction_p10s1q28b	([p10s1q28b] >= 0 and [p10s1q28b] <= 12)
CHECK on column p10s1q3b	CK_Construction_p10s1q3b	([p10s1q3b] >= 0 and [p10s1q3b] <= 12)
CHECK on column p10s1q4b	CK_Construction_p10s1q4b	([p10s1q4b] >= 0 and [p10s1q4b] <= 12)
FOREIGN KEY	FK_Construction_c_housebuilder	p10s1q5
		REFERENCES lecs3dev.dbo.c_housebuilder (tid)
FOREIGN KEY	FK_Construction_c_housebuilder1	p10s1q17
		REFERENCES lecs3dev.dbo.c_housebuilder (tid)
FOREIGN KEY	FK_Construction_c_housebuilder2	p10s1q29
		REFERENCES lecs3dev.dbo.c_housebuilder (tid)
FOREIGN KEY	FK_Construction_households	hhid
		REFERENCES lecs3dev.dbo.households (hhid)
PRIMARY KEY (clustered)	PK_ConstAct12Month	tid

2.15 hhBusiness1

2.15.1 Graph



2.15.2 Columns

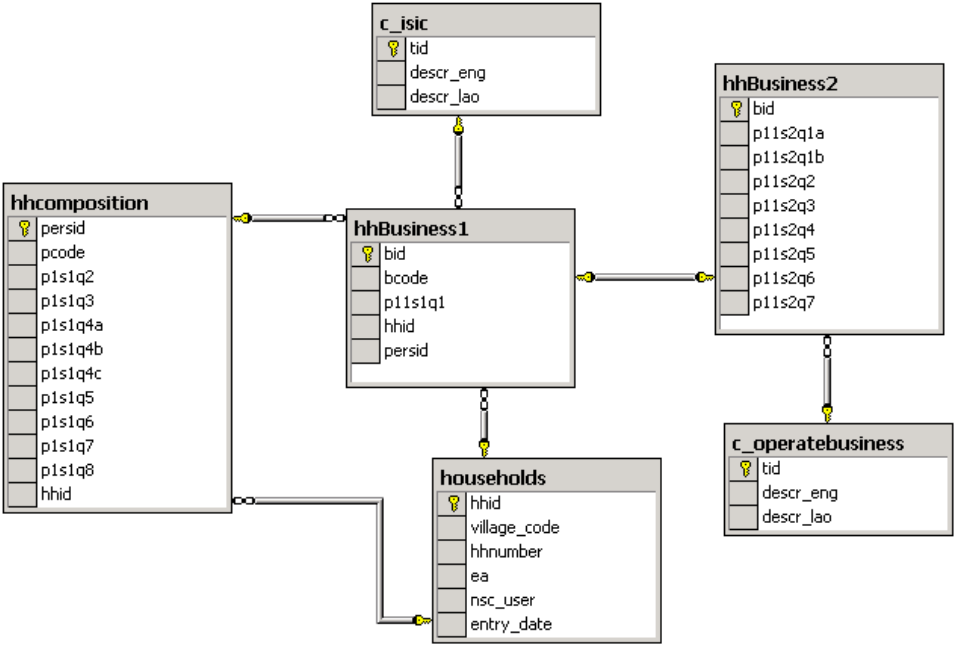
Data Item	Data type	Values	Description	Short Name
bid	int	Identity	Primary Key	bid
bcode	int	integer	From questionnaire	bcode
p11s1q1	int	1-2	Non-agricultural business	nonagrbus
isic_id	char	ISIC code	Business ISIC code	isic
hhid	int		Foreign Key	
persid	int		Foreign Key to household members that is running the business	

2.15.3 Constraints

Type	Name	Keys
CHECK on column p11s1q1	CK_hhBusiness1_p11s1q1	([p11s1q1] = 2 or [p11s1q1] = 1)
FOREIGN KEY	FK_hhBusiness1_c_isic	isic_id
		REFERENCES lecs3dev.dbo.c_isic (tid)
FOREIGN KEY	FK_hhBusiness1_hhcomposition	persid
		REFERENCES lecs3dev.dbo.hhcomposition (persid)
FOREIGN KEY	FK_hhBusiness1_households	hhid
		REFERENCES lecs3dev.dbo.households (hhid)
PRIMARY KEY (clustered)	PK_hhbusiness	bid

2.16 hhBusiness2

2.16.1 Graph



2.16.2 Columns

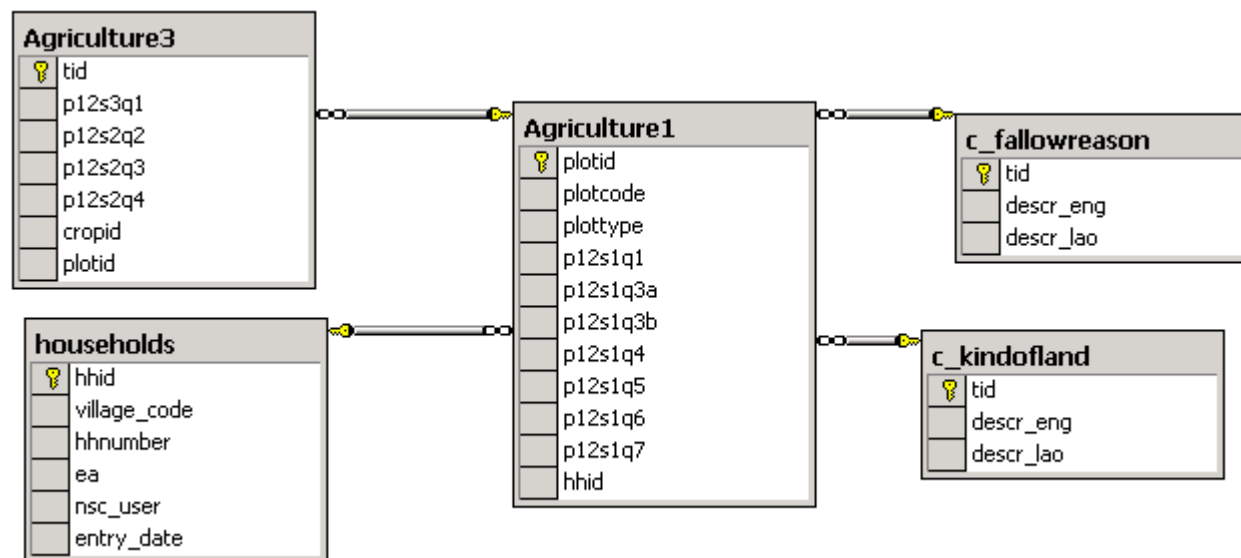
Data Item	Data type	Values	Description	Short Name
bid	int		Primary Key	bid
p11s2q1a	int	Years	How many years has the business been in operation	businopyear
p11s2q1b	int	0-12	How many months has the business been in operation	businopmonth
p11s2q2	int	c_operatebusiness	Where is the business operated	operatebusiness
p11s2q3	int	Number	Number of non HH members employed	employednohh
p11s2q4	int	1-2	Salary to HH members working in the business	salarytohhmembers
p11s2q5	int	Number	Number of HH members employed	hhemployed
p11s2q6	int	0-12	Business in operation last 12 months	busop12
p11s2q7	int	KIP	Average sales per month	avgsales

2.16.3 Constraints

Type	Name	Keys
CHECK on column p11s2q1b	CK_hhBusiness2_p11s2q1b	([p11s2q1b] >= 0 and [p11s2q1b] <= 11)
CHECK on column p11s2q4	CK_hhBusiness2_p11s2q4	([p11s2q4] = 2 or [p11s2q4] = 1)
CHECK on column p11s2q6	CK_hhBusiness2_p11s2q6	([p11s2q6] >= 0 and [p11s2q6] <= 12)
FOREIGN KEY	FK_hhBusiness2_c_operatebusiness	p11s2q2
		REFERENCES lecs3dev.dbo.c_operatebusiness (tid)
FOREIGN KEY	FK_hhBusiness2_hhBusiness1	bid
		REFERENCES lecs3dev.dbo.hhBusiness1 (bid)
PRIMARY KEY (clustered)	PK_hhBusiness2	bid

2.17 Agriculture1

2.17.1 Graph



2.17.2 Columns

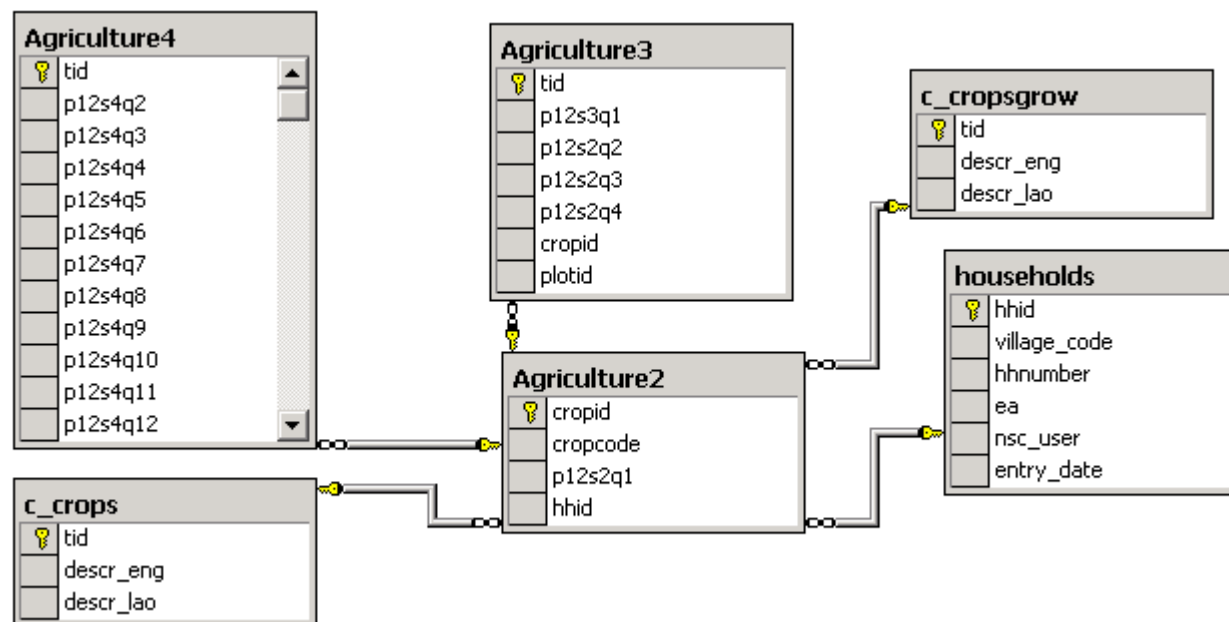
Data Item	Data type	Values	Description	Short Name
plotid	int	Identity	Primary Key	plotid
plotcode	int	Number	From questionnaire	plotcode
plotype	int	1-2	Wet or dry season plot	plotype
p12s1q1	int	1-2	Any in the household owned and/or operated any agricultural, forest or grazing land	ownland
p12s1q3a	int	1-2	Unit code hectares or SQM	unitcode
p12s1q3b	int	Amount	Amount of plot area	plotarea
p12s1q4	int	c_kindofland	Kind of land	kindofland
p12s1q5	int	1-2	Was plot irrigated	irrigated
p12s1q6	int	c_fallowreason	What was the reason plot was fallow	fallowreason
p12s1q7	int	1-2	Is plot owned or leased	plotownedorleased
hhid	int		Foreign Key	

2.17.3 Constraints

Type	Name	Keys
CHECK on column p12s1q1	CK_Agriculture1_p12s1q1	([p12s1q1] = 2 or [p12s1q1] = 1)
CHECK on column p12s1q3b	CK_Agriculture1_p12s1q3b	([p12s1q3b] = 2 or [p12s1q3b] = 1)
CHECK on column p12s1q6	CK_Agriculture1_p12s1q6	([p12s1q6] = 2 or [p12s1q6] = 1)
CHECK on column p12s1q7	CK_Agriculture1_p12s1q7	([p12s1q7] = 2 or [p12s1q7] = 1)
FOREIGN KEY	FK_Agriculture1_c_fallowreason	p12s1q5
		REFERENCES lecs3dev.dbo.c_fallowreason (tid)
FOREIGN KEY	FK_Agriculture1_c_kindofland	p12s1q4
		REFERENCES lecs3dev.dbo.c_kindofland (tid)
FOREIGN KEY	FK_Agriculture1_households	hhid
		REFERENCES lecs3dev.dbo.households (hhid)
PRIMARY KEY (clustered)	PK_Agriculture	plotid

2.18 Agriculture2

2.18.1 Graph



2.18.2 Columns

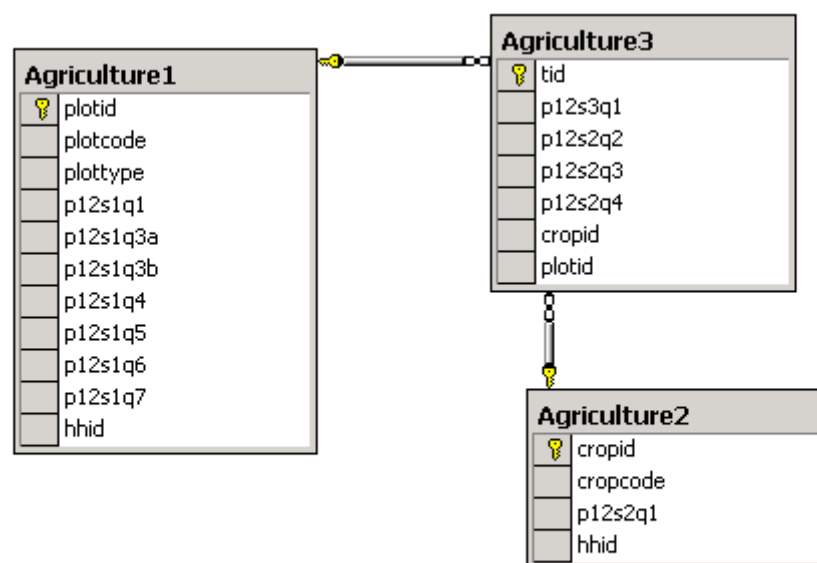
Data Item	Data type	Values	Description	Short Name
cropid	int	Identity	Primary Key	cropid
cropcode	char	Code	From questionnaire	cropcode
p12s2q1	int	c_crosgrow	How crops grow	crosgrow
hhid	int		Foreign Key	

2.18.3 Constraints

Type	Name	Keys
FOREIGN KEY	FK_Agriculture2_c_crops	cropcode
		REFERENCES lecs3dev.dbo.c_crops (tid)
FOREIGN KEY	FK_Agriculture2_c_crosgrow	p12s2q1
		REFERENCES lecs3dev.dbo.c_crosgrow (tid)
FOREIGN KEY	FK_Agriculture2_households	hhid
		REFERENCES lecs3dev.dbo.households (hhid)
PRIMARY KEY (clustered)	PK_Agriculture2	cropid

2.19 Agriculture3

2.19.1 Graph



2.19.2 Columns

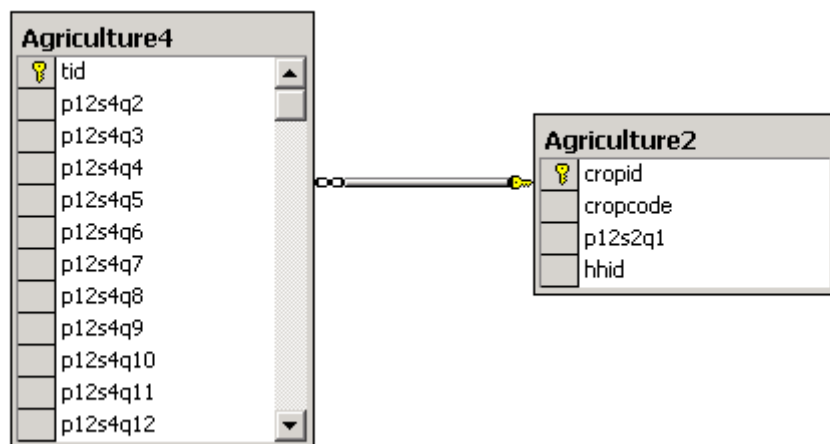
Data Item	Data type	Values	Description	Short Name
tid	int	Identity	Primary Key	tid
p12s3q1	int	Hectare	Area planted	areaplanted
p12s2q2	int	Hectare	Area harvested	areaharvested
p12s2q3	int	KG	Production in KG	production
p12s2q4	int	KG/HA	Yield KG/HA	yield
cropid	int		Foreign Key	
plotid	int		Foreign Key	

2.19.3 Constraints

Type	Name	Keys
FOREIGN KEY	FK_Agriculture3_Agriculture1	plotid
		REFERENCES lecs3dev.dbo.Agriculture1 (plotid)
FOREIGN KEY	FK_Agriculture3_Agriculture2	cropid
		REFERENCES lecs3dev.dbo.Agriculture2 (cropid)
PRIMARY KEY (clustered)	PK_Agriculture3	tid

2.20 Agriculture4

2.20.1 Graph



2.20.2 Columns

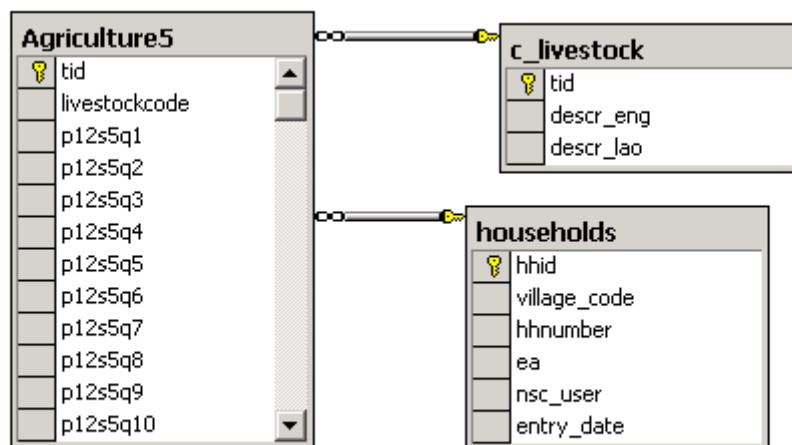
Data Item	Data type	Values	Description	Short Name
tid	int	Identity	Primary Key	tid
p12s4q2	int	1-2	Sold any	soldany
p12s4q3	int	KG	How much sold	soldkg
p12s4q4	int	1-2	Was there any losses to insects, rodents	lostany
p12s4q5	int	KG	How much was lost	lostkg
p12s4q6	int	1-2	Give away as payments	giveany
p12s4q7	int	KG	How much was given away	givekg
p12s4q8	int	1-2	Used for animal feed	animalany
p12s4q9	int	KG	How much for animal feed	animalkg
p12s4q10	int	1-2	Used to produce processed food for sale	producedany
p12s4q11	int	KG	How much was produced	producekg
p12s4q12	int	1-2	Give away as gifts	giftsany
p12s4q13	int	KG	How much was given away as gifts	giftskg
p12s4q14	int	1-2	Used for seed	seedany
p12s4q15	int	KG	How much was used for seed	seedkg
p12s4q16	int	1-2	Anything still being stored	storeany
p12s4q17	int	KG	How much is stored	storedkg
cropid	int		Foreign Key	

2.20.3 Constraints

Type	Name	Keys
FOREIGN KEY	FK_Agriculture4_Agriculture2	cropid
		REFERENCES lecs3dev.dbo.Agriculture2 (cropid)
PRIMARY KEY (clustered)	PK_Agriculture4	tid

2.21 Agriculture5

2.21.1 Graph



2.21.2 Columns

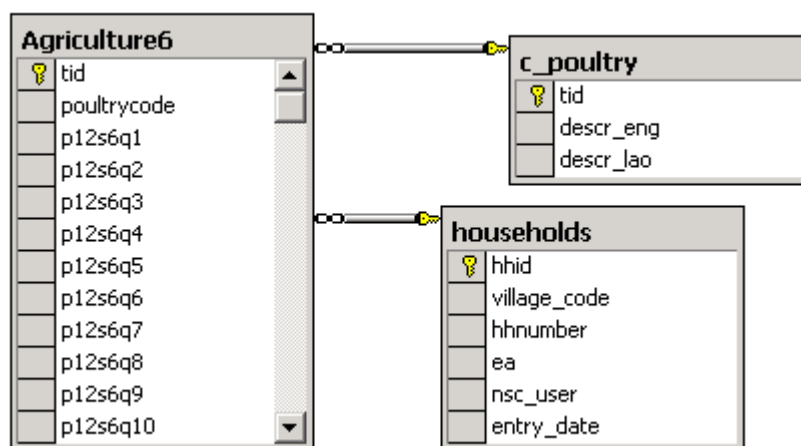
Data Item	Data type	Values	Description	Short Name
tid	int	Identity	Primary Key	tid
livestockcode	int	c_livestoch	Livestock	livestock
p12s5q1	int	1-2	Houshold raised livestock	hhraisedlivestock
p12s5q2	int	Number	How many young animals is this household raising	younganimalno
p12s5q3	int	Value KIP	What is the value of the young animals	younganimalvalue
p12s5q4	int	Number	How many adult animals is this household raising	adanimalno
p12s5q5	int	Value KIP	What is the value of the adult animals	adanimalvalue
p12s5q6	int	Number	Number of total animals	totalanimalno
p12s5q7	int	Value KIP	Value of all animals	totalanimalvalue
p12s5q8	int	Number	How many sold	totalanimalsold
p12s5q9	int	Value KIP	How much received from sales	totalsalesanimal
p12s5q10	int	Number	Number of animals bought	animalsbought
p12s5q11	int	Value KIP	Paid for animals	animalspaid
p12s5q12	int	Value KIP	Value of newly born animals or animals received as gift	valuebornanimals
p12s5q13	int	Value KIP	Value of animals stolen or lost	valuestolenanimals
p12s5q14	int	Value KIP	Value of animals consumed by household	valueanimalsconsumed
hhid	int		Foreign Key	

2.21.3 Constraints

Type	Name	Keys
CHECK on column p12s5q1	CK_Agriculture5_p12s5q1	([p12s5q1] = 2 or [p12s5q1] = 1)
FOREIGN KEY	FK_Agriculture5_c_livestock	livestockcode
		REFERENCES lecs3dev.dbo.c_livestock (tid)
FOREIGN KEY	FK_Agriculture5_households	hhid
		REFERENCES lecs3dev.dbo.households (hhid)
PRIMARY KEY (clustered)	PK_Agriculture5	tid

2.22 Agriculture6

2.22.1 Graph



2.22.2 Columns

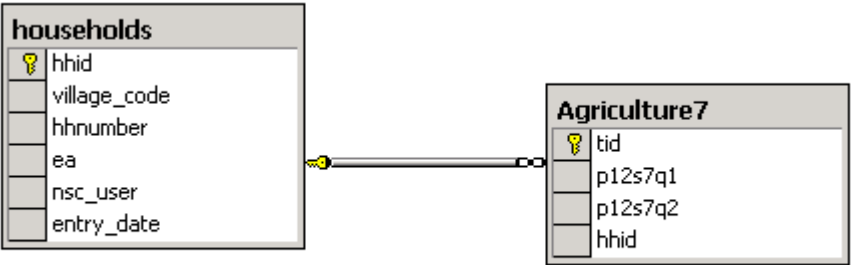
Data Item	Data type	Values	Description	Short Name
tid	int	Identity	Primary Key	tid
poultrycode	int	c_poultry	Poultry code	poultry
p12s6q1	int	1-2	Household raised poultry	hhraisedpoultry
p12s6q2	int	Number	Number of poultry raised by household	poultryno
p12s6q3	int	Value KIP	Current price	poultryprice
p12s6q4	int	Number	Have many poultry sold in last 4 weeks	soldpoultryno
p12s6q5	int	Value KIP	Paid per poultry	incomepoultry
p12s6q6	int	Number	Number of poultry bought in last 4 weeks	buypoultryno
p12s6q7	int	Value KIP	Pay for poultry	poultryprice
p12s6q8	int	Number	Number of poultry received as gift last 4 weeks	poultrygifts
p12s6q9	int	Number	Number of poultry given away	givepoultry
p12s6q10	int	Number	Number of poultry stolen, lost or died last 4 weeks	lostpoultry
hhid	int		Foreign Key	

2.22.3 Constraints

Type	Name	Keys
CHECK on column p12s6q1	CK_Agriculture6_p12s6q1	([p12s6q1] = 2 or [p12s6q1] = 1)
FOREIGN KEY	FK_Agriculture6_c_poultry	poultrycode
		REFERENCES lecs3dev.dbo.c_poultry (tid)
FOREIGN KEY	FK_Agriculture6_households	hhid
		REFERENCES lecs3dev.dbo.households (hhid)
PRIMARY KEY (clustered)	PK_Agriculture6	tid

2.23 Agriculture7

2.23.1 Graph



2.23.2 Columns

Data Item	Data type	Values	Description	Short Name
tid	int	Identity	Primary Key	tid
p12s7q1	char	1-2	Household use any chemical fertilizers	fertilizers
p12s7q2	char	1-2	Household use any insecticides or pesticides	insecticides
hhid	int		Foreign Key	

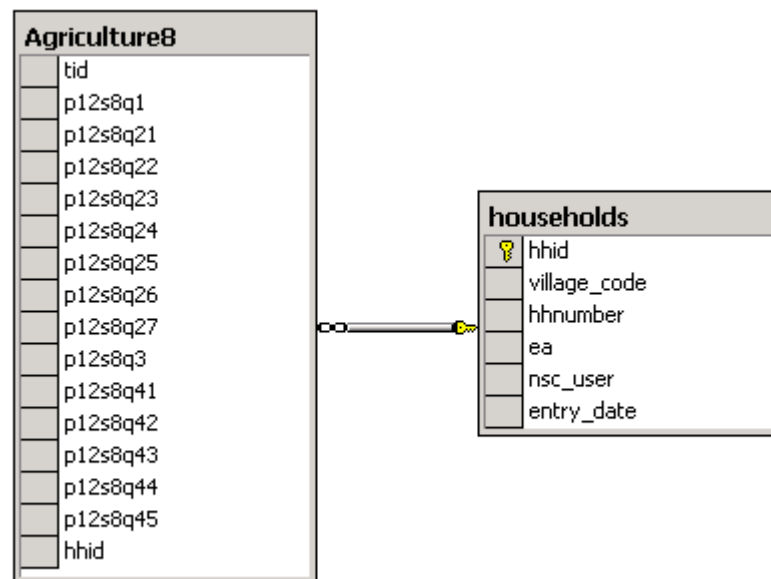
2.23.3 Constraints

Type	Name	Keys
CHECK on column p12s7q1	CK_Agriculture7_p12s7q1	([p12s7q1] = 2 or [p12s7q1] = 1)

CHECK on column p12s7q2	CK_Agriculture7_p12s7q2	([p12s7q2] = 2 or [p12s7q2] = 1)
FOREIGN KEY	FK_Agriculture7_households	hhid
		REFERENCES lecs3dev.dbo.households (hhid)
PRIMARY KEY (clustered)	PK_Agriculture7	tid

2.24 Agriculture8

2.24.1 Graph



2.24.2 Columns

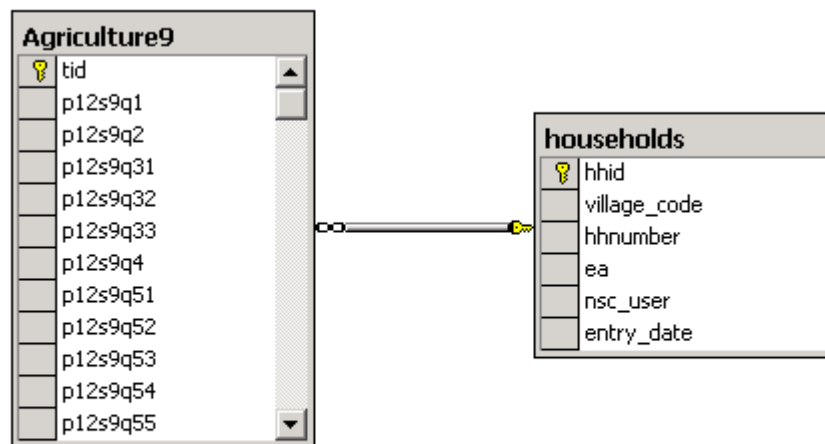
Data Item	Data type	Values	Description	Short Name
tid	int	Identity	Primary Key	tid
p12s8q1	int	1-2	Does household have any fish culture or is engaged in fishery	hhfishery
p12s8q21	int	1-2	Type of fish culture : Rice	fishrice
p12s8q22	int	1-2	Type of fish culture : Pond	fishpond
p12s8q23	int	1-2	Type of fish culture : Cage	fishcage
p12s8q24	int	1-2	Type of fish culture : Integrated pond	fishintegrated
p12s8q25	int	1-2	Type of fish culture : Community fish	fishcommunity
p12s8q26	int	1-2	Type of fish culture : Fish breed production	fishbreed
p12s8q27	int	1-2	Type of fish culture : Other	fishother
p12s8q3	int	1-2	Did the household do any uncultured fishing	fishuncultured
p12s8q41	int	1-2	Was the fishing in : River	fishriver
p12s8q42	int	1-2	Was the fishing in : Lake or reservoir	fishlake
p12s8q43	int	1-2	Was the fishing in : Swamp or floodplain	fishswamp
p12s8q44	int	1-2	Was the fishing in : rice field	fishricefield
p12s8q45	int	1-2	Was the fishing in : other	fishotherplace
hhid	int		Foreign Key	

2.24.3 Constraints

Type	Name	Keys
CHECK on column p12s8q1	CK_Agriculture8_p12s8q1	([p12s8q1] = 2 or [p12s8q1] = 1)
CHECK on column p12s8q21	CK_Agriculture8_p12s8q21	([p12s8q21] = 2 or [p12s8q21] = 1)
CHECK on column p12s8q22	CK_Agriculture8_p12s8q22	([p12s8q22] = 2 or [p12s8q22] = 1)
CHECK on column p12s8q23	CK_Agriculture8_p12s8q23	([p12s8q23] = 2 or [p12s8q23] = 1)
CHECK on column p12s8q24	CK_Agriculture8_p12s8q24	([p12s8q24] = 2 or [p12s8q24] = 1)
CHECK on column p12s8q25	CK_Agriculture8_p12s8q25	([p12s8q25] = 2 or [p12s8q25] = 1)
CHECK on column p12s8q26	CK_Agriculture8_p12s8q26	([p12s8q26] = 2 or [p12s8q26] = 1)
CHECK on column p12s8q27	CK_Agriculture8_p12s8q27	([p12s8q27] = 2 or [p12s8q27] = 1)
CHECK on column p12s8q3	CK_Agriculture8_p12s8q3	([p12s8q3] = 2 or [p12s8q3] = 1)
CHECK on column p12s8q41	CK_Agriculture8_p12s8q41	([p12s8q41] = 2 or [p12s8q41] = 1)
CHECK on column p12s8q42	CK_Agriculture8_p12s8q42	([p12s8q42] = 2 or [p12s8q42] = 1)
CHECK on column p12s8q43	CK_Agriculture8_p12s8q43	([p12s8q43] = 2 or [p12s8q43] = 1)
CHECK on column p12s8q44	CK_Agriculture8_p12s8q44	([p12s8q44] = 2 or [p12s8q44] = 1)
CHECK on column p12s8q45	CK_Agriculture8_p12s8q45	([p12s8q45] = 2 or [p12s8q45] = 1)
FOREIGN KEY	FK_Agriculture8_households	hhid
		REFERENCES lecs3dev.dbo.households (hhid)

2.25 Agriculture9

2.25.1 Graph



2.25.2 Columns

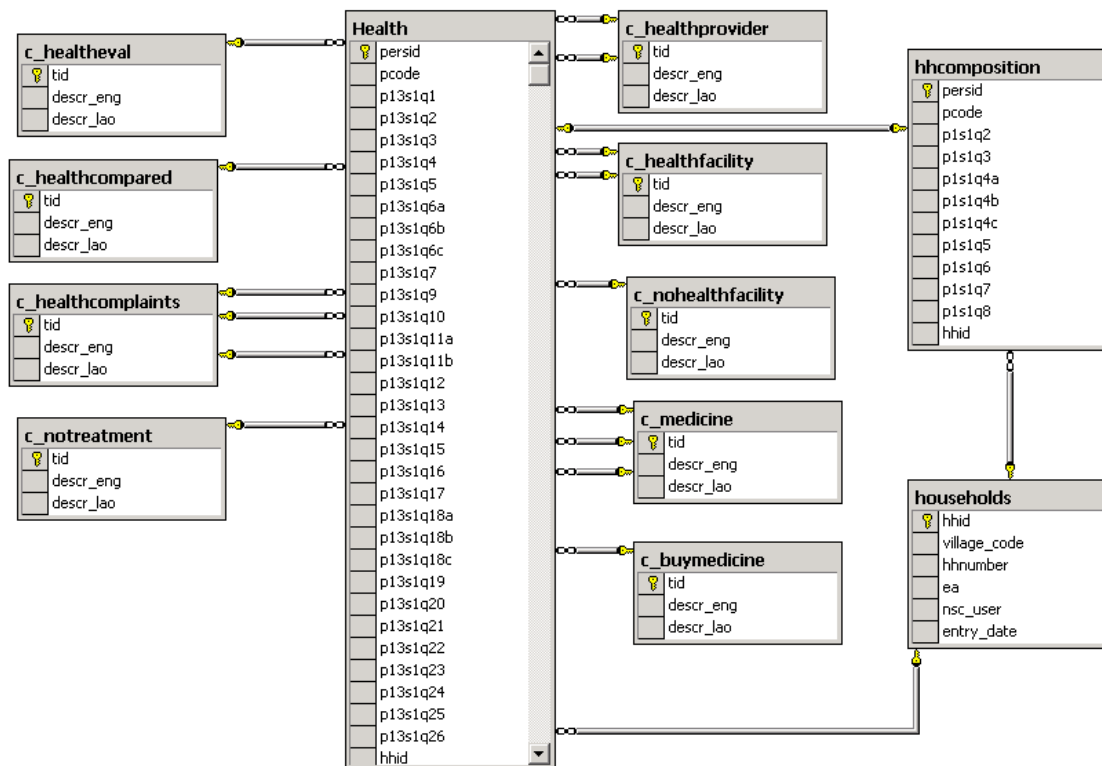
Data Item	Data type	Values	Description	Short Name
tid	int	Identity	Primary Key	tid
p12s9q1	int	1-2	Household own forest	ownforest
p12s9q2	int	1-2	In last 12 months did household exploit forest	exploitownforest
p12s9q31	int	1-2	From owned forest obtain: Timber	obtaintimber
p12s9q32	int	1-2	From owned forest obtain: Fuel wood	obtainfuelwood
p12s9q33	int	1-2	From owned forest obtain: Bamboo	obtainbamboo
p12s9q4	int	1-2	Exploit not owned forest	exploitnotownedforest
p12s9q51	int	1-2	Obtained from not owned forest: Timber	notowntimber
p12s9q52	int	1-2	Obtained from not owned forest: Fuel wood	notownfuelwood
p12s9q53	int	1-2	Obtained from not owned forest: Bamboo	notownbamboo
p12s9q54	int	1-2	Obtained from not owned forest: Tuber	notowntuber
p12s9q55	int	1-2	Obtained from not owned forest: Other	notownother
hhid	int		Foreign Key	

2.25.3 Constraints

Type	Name	Keys
CHECK on column p12s9q1	CK_Agriculture9_p12s9q1	([p12s9q1] = 2 or [p12s9q1] = 1)
CHECK on column p12s9q2	CK_Agriculture9_p12s9q2	([p12s9q2] = 2 or [p12s9q2] = 1)
CHECK on column p12s9q31	CK_Agriculture9_p12s9q31	([p12s9q31] = 2 or [p12s9q31] = 1)
CHECK on column p12s9q32	CK_Agriculture9_p12s9q32	([p12s9q32] = 2 or [p12s9q32] = 1)
CHECK on column p12s9q33	CK_Agriculture9_p12s9q33	([p12s9q33] = 2 or [p12s9q33] = 1)
CHECK on column p12s9q4	CK_Agriculture9_p12s9q4	([p12s9q4] = 2 or [p12s9q4] = 1)
CHECK on column p12s9q51	CK_Agriculture9_p12s9q51	([p12s9q51] = 2 or [p12s9q51] = 1)
CHECK on column p12s9q52	CK_Agriculture9_p12s9q52	([p12s9q52] = 2 or [p12s9q52] = 1)
CHECK on column p12s9q53	CK_Agriculture9_p12s9q53	([p12s9q53] = 2 or [p12s9q53] = 1)
CHECK on column p12s9q54	CK_Agriculture9_p12s9q54	([p12s9q54] = 2 or [p12s9q54] = 1)
CHECK on column p12s9q55	CK_Agriculture9_p12s9q55	([p12s9q55] = 2 or [p12s9q55] = 1)
FOREIGN KEY	FK_Agriculture9_households	hhid
		REFERENCES lecs3dev.dbo.households (hhid)
PRIMARY KEY (clustered)	PK_Agriculture9	tid

2.26 Health

2.26.1 Graph



2.26.2 Columns

Data Item	Data type	Values	Description	Short Name
persid	int	persid	int	See hhComposition
pcode	int	pcode	int	See hhComposition
p13s1q1	int	c_healtheval	How would you evaluate your health	healtheval
p13s1q2	int	c_healthcompared	Compared health with others in the same age	healthcompared
p13s1q3	int	1-2	Long-term illness	longtermillness
p13s1q4	int	1-2	Does this long-term illness affect your daily life	longtermaffect
p13s1q5	int	1-2	Temporary health complaints past 4 weeks	tempcomplaints
p13s1q6a	int	c_healthcomplaints	What health complaints, first	healthcomplaints1
p13s1q6b	int	c_healthcomplaints	What health complaints, second	healthcomplaints2
p13s1q6c	int	c_healthcomplaints	What health complaints, third	healthcomplaints3
p13s1q7	int	1-2	Did your health complaints affect daily life	healtcompaffect
p13s1q7	int	Days	How many days were missed due to poor health	daysmissed
p13s1q9	int	1-2	Seek treatment at health facility or health provider	seektreatment
p13s1q10	int	c_notreatment	Why no treatment	notreatment
p13s1q11a	int	c_healthprovider	First health provider visited	visitprovider1
p13s1q11b	int	c_healthprovider	Second health provider visited	visitprovider2
p13s1q12	int	Number	How many times visit health facility past 4 weeks	visitfacility
p13s1q13	int	c_healthfacility	Kind of health facility visited	kindoffacility
p13s1q14	int	Number	Visit private doctor	visitprivatedr
p13s1q15	int	c_nohealthfacility	Most recent visit to health provider	modernprovider
p13s1q16	int	Number	Visit to traditional provider	tradprovider
p13s1q17	int	1-2	Purchase medicine	buymedicine
p13s1q18a	int	c_medicine	What type of medicine : first	medicine1
p13s1q18b	int	c_medicine	What type of medicine : second	medicine2

p13s1q18c	int	c_medicine	What type of medicine : third	medicine3
p13s1q19	int	c_buymedicine	Where was medicine purchased	drugstore
p13s1q20	int	1-2	Hospitalised in past 12 months	hospitalised
p13s1q21	int	Number	How many times were you hospitalised	hospitalisedtimes
p13s1q22	int	c_healthfacility	Type of hospital	typeofhospital
p13s1q23	int	Days	Days in hospital	daysinhospital
p13s1q24	int	Amount KIP	Cost for hospital stay	hospitalcost
p13s1q25	int	Amount KIP	Cost for transport to hospital	hospitaltrpcost
p13s1q26	int	1-2	Have to borrow money to pay for health bills	healthborrow
hhid	int		Foreign Key	

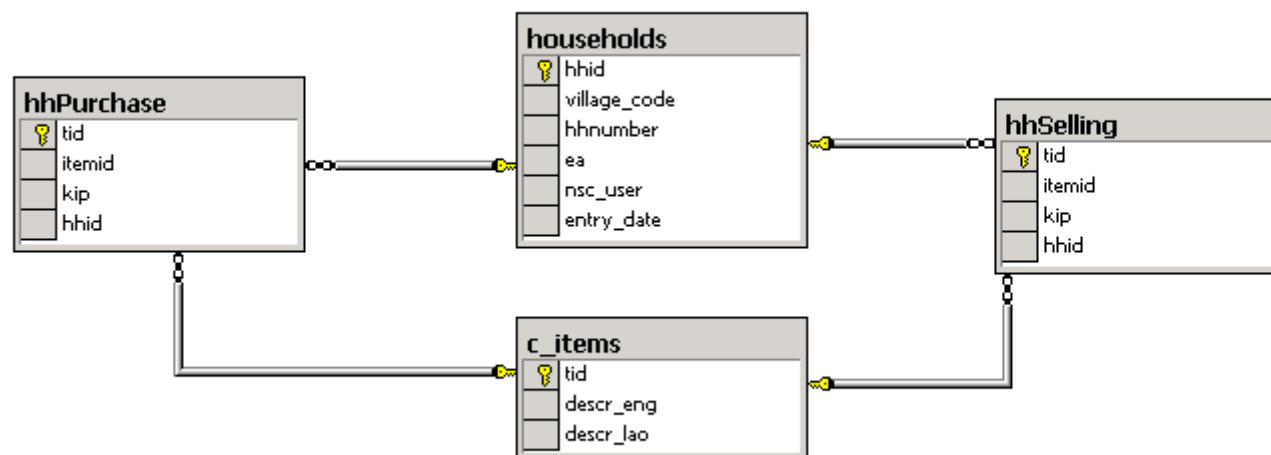
2.26.3 Constraints

Type	Name	Keys
CHECK on column p13s1q17	CK_Health_p13s1q17	([p13s1q17] = 2 or [p13s1q17] = 1)
CHECK on column p13s1q20	CK_Health_p13s1q20	([p13s1q20] = 2 or [p13s1q20] = 1)
CHECK on column p13s1q26	CK_Health_p13s1q26	([p13s1q26] = 2 or [p13s1q26] = 1)
CHECK on column p13s1q3	CK_Health_p13s1q3	([p13s1q3] = 2 or [p13s1q3] = 1)
CHECK on column p13s1q4	CK_Health_p13s1q4	([p13s1q4] = 2 or [p13s1q4] = 1)
CHECK on column p13s1q5	CK_Health_p13s1q5	([p13s1q5] = 2 or [p13s1q5] = 1)
CHECK on column p13s1q7	CK_Health_p13s1q7	([p13s1q7] = 2 or [p13s1q7] = 1)
CHECK on column p13s1q9	CK_Health_p13s1q9	([p13s1q9] = 2 or [p13s1q9] = 1)
FOREIGN KEY	FK_Health_c_buymedicine	p13s1q19
		REFERENCES lecs3dev.dbo.c_buymedicine (tid)
FOREIGN KEY	FK_Health_c_healthcompared	p13s1q2
		REFERENCES lecs3dev.dbo.c_healthcompared (tid)
FOREIGN KEY	FK_Health_c_healthcomplaints	p13s1q6a
		REFERENCES lecs3dev.dbo.c_healthcomplaints (tid)
FOREIGN KEY	FK_Health_c_healthcomplaints1	p13s1q6b
		REFERENCES lecs3dev.dbo.c_healthcomplaints (tid)
FOREIGN KEY	FK_Health_c_healthcomplaints2	p13s1q6c
		REFERENCES lecs3dev.dbo.c_healthcomplaints (tid)
FOREIGN KEY	FK_Health_c_healtheval	p13s1q1
		REFERENCES lecs3dev.dbo.c_healtheval (tid)
FOREIGN KEY	FK_Health_c_healthfacility	p13s1q13
		REFERENCES lecs3dev.dbo.c_healthfacility (tid)
FOREIGN KEY	FK_Health_c_healthfacility1	p13s1q22
		REFERENCES lecs3dev.dbo.c_healthfacility (tid)

FOREIGN KEY	FK_Health_c_healthprovider	p13s1q11a
		REFERENCES lecs3dev.dbo.c_healthprovider (tid)
FOREIGN KEY	FK_Health_c_healthprovider1	p13s1q11b
		REFERENCES lecs3dev.dbo.c_healthprovider (tid)
FOREIGN KEY	FK_Health_c_medicine	p13s1q18a
		REFERENCES lecs3dev.dbo.c_medicine (tid)
FOREIGN KEY	FK_Health_c_medicine1	p13s1q18b
		REFERENCES lecs3dev.dbo.c_medicine (tid)
FOREIGN KEY	FK_Health_c_medicine2	p13s1q18c
		REFERENCES lecs3dev.dbo.c_medicine (tid)
FOREIGN KEY	FK_Health_c_nohealthfacility	p13s1q15
		REFERENCES lecs3dev.dbo.c_nohealthfacility (tid)
FOREIGN KEY	FK_Health_c_notreatment	p13s1q10
		REFERENCES lecs3dev.dbo.c_notreatment (tid)
FOREIGN KEY	FK_Health_households	hhid
		REFERENCES lecs3dev.dbo.households (hhid)
PRIMARY KEY (clustered)	PK_Health	persid

2.27 hhPurchase

2.27.1 Graph



2.27.2 Columns

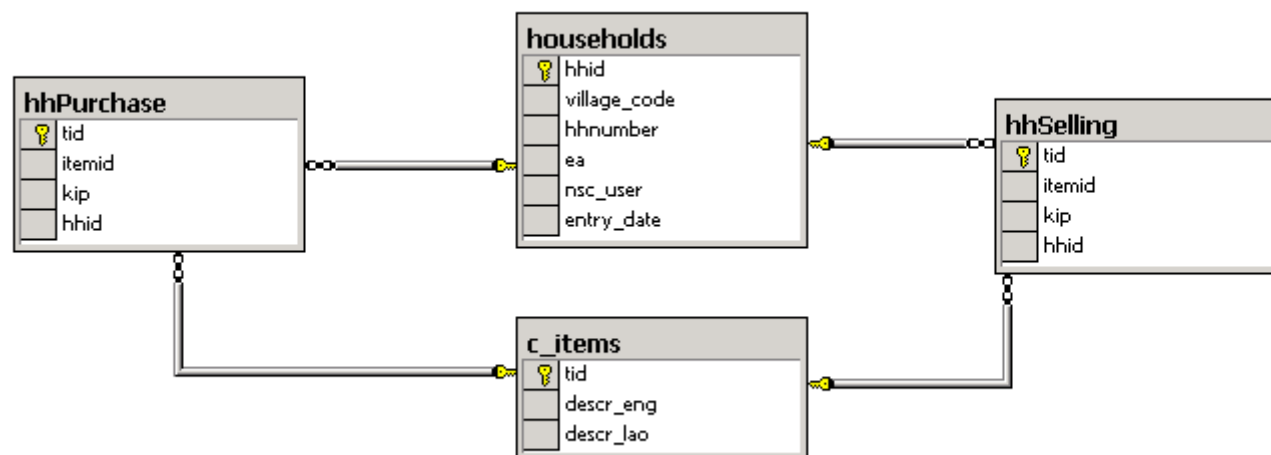
Data Item	Data type	Values	Description	Short Name
tid	int	Identity	Primary Key	tid
itemid	int	c_items	Item code list	items
kip	int	Amount	Amount in KIP	costbuyitem
hhid	int		Foreign Key	

2.27.3 Constraints

Type	Name	Keys
FOREIGN KEY	FK_hhPurchase_c_items	itemid
		REFERENCES lecs3dev.dbo.c_items (tid)
FOREIGN KEY	FK_hhPurchase_households	hhid
		REFERENCES lecs3dev.dbo.households (hhid)
PRIMARY KEY (clustered)	PK_hhPurchase	tid

2.28 hhSelling

2.28.1 Graph



2.28.2 Columns

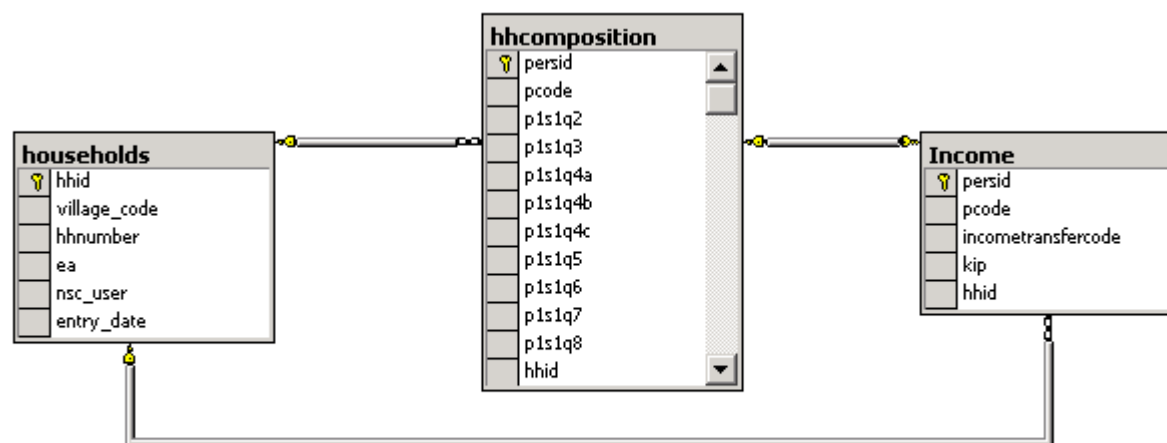
Data Item	Data type	Values	Description	Short Name
tid	int	Identity	Primary Key	tid
itemid	int	c_items	Item Code list	items
kip	int	Amount	Amount in kip for sold items	kipsolditem
hhid	int		Foreign Key	

2.28.3 Constraints

Type	Name	Keys
FOREIGN KEY	FK_hhSelling_c_items	itemid
		REFERENCES lecs3dev.dbo.c_items (tid)
FOREIGN KEY	FK_hhSelling_households	hhid
		REFERENCES lecs3dev.dbo.households (hhid)
PRIMARY KEY (clustered)	PK_hhSelling	tid

2.29 Income

2.29.1 Graph



2.29.2 Columns

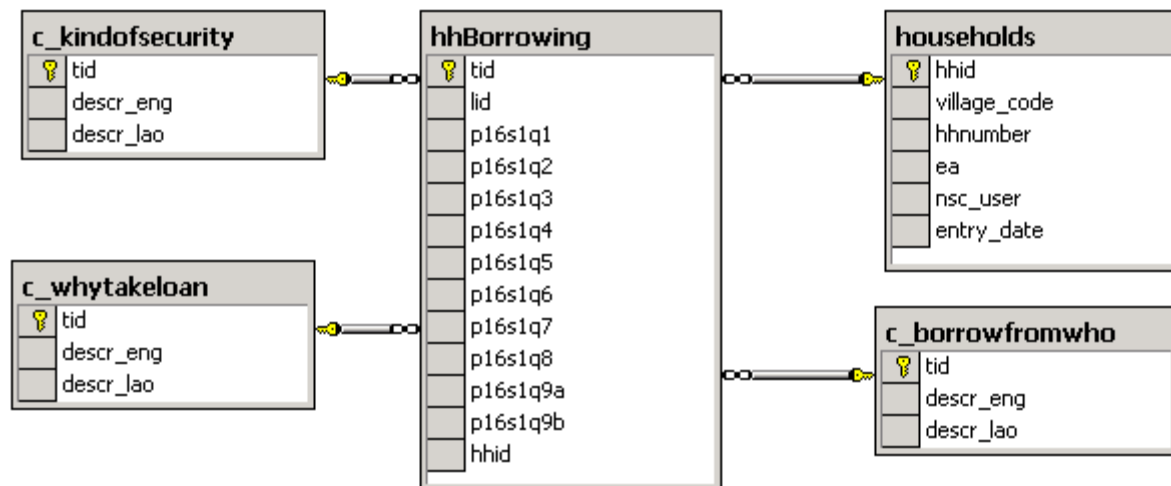
Data Item	Data type	Values	Description	Short Name
persid	int	persid	int	See hhComposition
pcode	int	pcode	int	See hhComposition
incometransfercode	int	c_incometransfercodes	Income transfer codes	transfercodes
kip	int	Amount	Amount in KIP	amountinkip
hhid	int		Foreign Key	

2.29.3 Constraints

Type	Name	Keys
FOREIGN KEY	FK_Income_households	hhid
		REFERENCES lecs3dev.dbo.households (hhid)
PRIMARY KEY (clustered)	PK_Income	persid

2.30 hhBorrowing

2.30.1 Graph



2.30.2 Columns

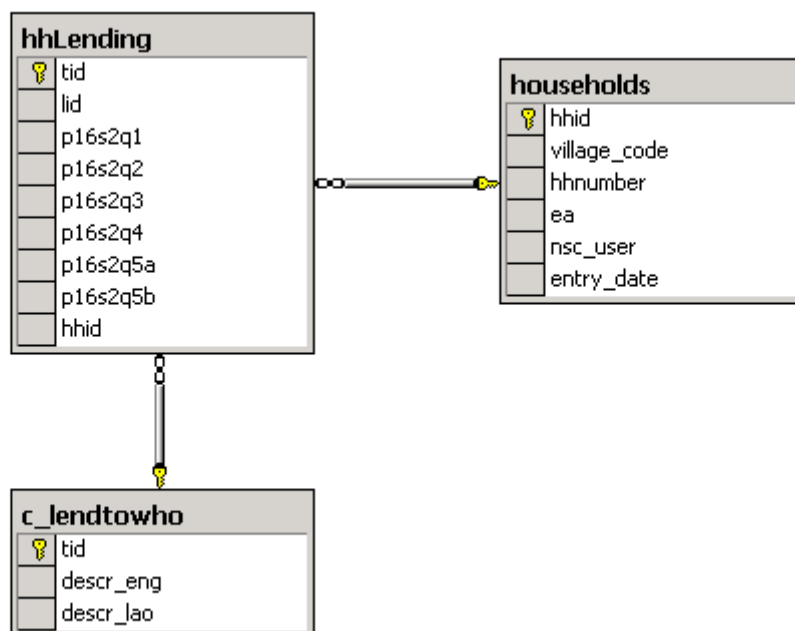
Data Item	Data type	Values	Description	Short Name
tid	int	Identity	Primary Key	tid
lid	int	Loan id	Loan order id	lid
p16s1q1	int	1-2	Does any household member owe money or goods to anyone	hhowemoney
p16s1q2	int	c_borrowfromwho	From who was the borrowing made	borrowfromwho
p16s1q3	int	Amount KIP	Amount of money borrowed	amountboorowed
p16s1q4	int	c_whytakeloan	Why have to take loan	why take loan
p16s1q5	int	1-2	Any security	anysecurity
p16s1q6	int	c_kindofsecurity	What kind of security	kindofsecurity
p16s1q7	int	1-2	Any rate of interest	anyrateofinterest
p16s1q8	int	Amount	Yearly per cent rate of interest	rateofinterest
p16s1q9a	int	1-12	When must debt be paid back: month	debtduemonth
p16s1q9b	int	Year	When must debt be paid back: year	debtduyear
hhid	int		Foreign Key	

2.30.3 Constraints

Type	Name	Keys
CHECK on column p16s1q1	CK_hhBorrowing_p16s1q1	([p16s1q1] = 2 or [p16s1q1] = 1)
CHECK on column p16s1q5	CK_hhBorrowing_p16s1q5	([p16s1q5] = 2 or [p16s1q5] = 1)
CHECK on column p16s1q7	CK_hhBorrowing_p16s1q7	([p16s1q7] = 2 or [p16s1q7] = 1)
CHECK on column p16s1q8	CK_hhBorrowing_p16s1q8	([p16s1q8] >= 0 and [p16s1q8] <= 100)
CHECK on column p16s1q9a	CK_hhBorrowing_p16s1q9a	([p16s1q9a] >= 1 and [p16s1q9a] <= 12)
FOREIGN KEY	FK_hhBorrowing_c_borrowfromwho	p16s1q2
		REFERENCES lecs3dev.dbo.c_borrowfromwho (tid)
FOREIGN KEY	FK_hhBorrowing_c_kindofsecurity	p16s1q6
		REFERENCES lecs3dev.dbo.c_kindofsecurity (tid)
FOREIGN KEY	FK_hhBorrowing_c_whytakeloan	p16s1q4
		REFERENCES lecs3dev.dbo.c_whytakeloan (tid)
FOREIGN KEY	FK_hhBorrowing_households	hhid
		REFERENCES lecs3dev.dbo.households (hhid)
PRIMARY KEY (clustered)	PK_hhBorrowing	tid

2.31 hhLending

2.31.1 Graph



2.31.2 Columns

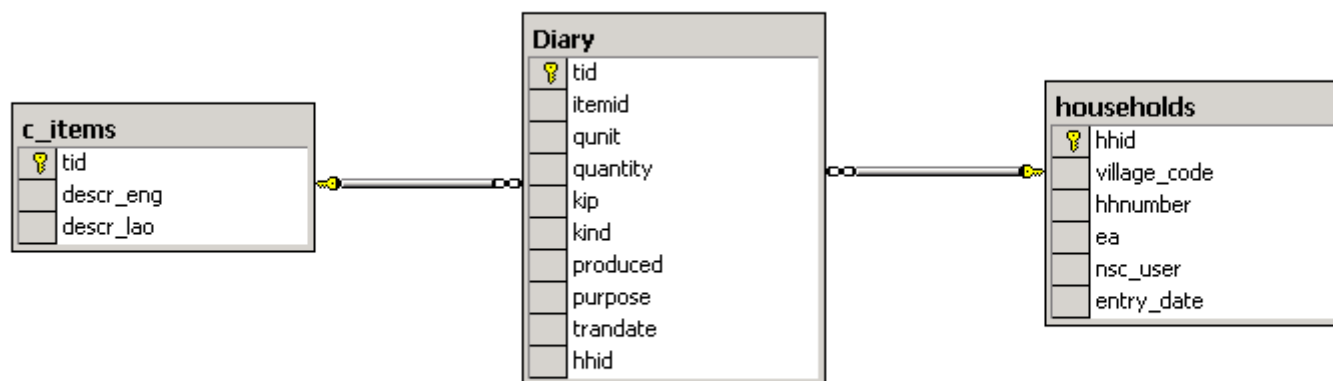
Data Item	Data type	Values	Description	Short Name
tid	int	Identity	Primary Key	tid
lid	int	Loan id	Loan order id	lid
p16s2q1	int	1-2	Have anybody in the household lent out money that is not yet paid back	lentmoney
p16s2q2	int	Amount KIP	Lent money	moneylent
p16s2q3	int	c_lendtowho	Who are the borrowers	lendtowho
p16s2q4	int	1-2	Is there a rate of interest specified for this loan	loaninterest
p16s2q5	int	Amount	Yearly interest rate	loaninterestrate
p16s2q6a	int	1-12	Loan due : month	loanduemonth
p16s2q6b	int	Year	Loan due : year	loandueyear
hhid	int		Foreign Key	

2.31.3 Constraints

Type	Name	Keys
CHECK on column p16s2q6a	CK_hhLending	([p16s2q6a] >= 1 and [p16s2q6a] <= 12)
CHECK on column p16s2q1	CK_hhLending_p16s2q1	([p16s2q1] = 2 or [p16s2q1] = 1)
CHECK on column p16s2q4	CK_hhLending_p16s2q4	([p16s2q4] = 2 or [p16s2q4] = 1)
CHECK on column p16s2q5	CK_hhLending_p16s2q5	([p16s2q5] >= 0 and [p16s2q5] <= 100)
FOREIGN KEY	FK_hhLending_c_lendtowho	p16s2q3
		REFERENCES lecs3dev.dbo.c_lendtowho (tid)
FOREIGN KEY	FK_hhLending_households	hhid
		REFERENCES lecs3dev.dbo.households (hhid)
PRIMARY KEY (clustered)	PK_hhLending	tid

2.32 Diary

2.32.1 Graph



2.32.2 Columns

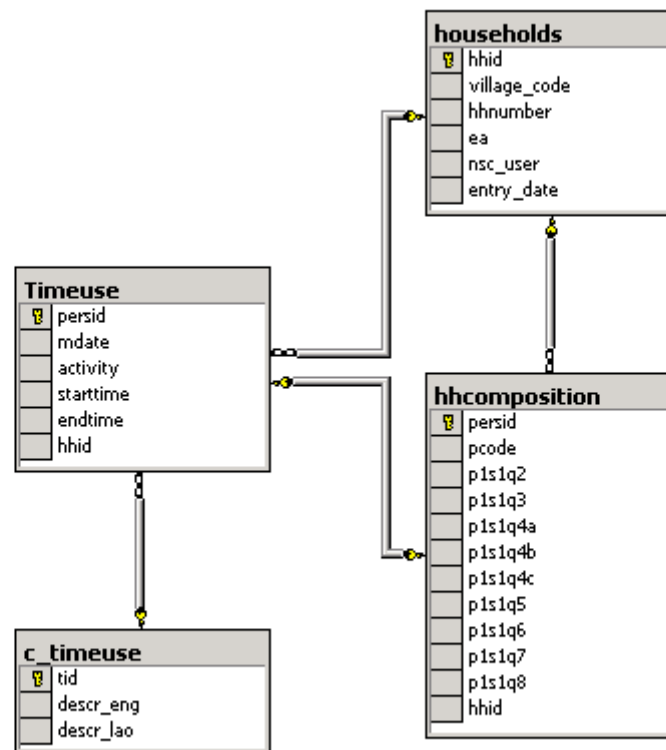
Data Item	Data type	Values	Description	Short Name
tid	int	Identity	Primary Key	tid
itemid	int	c_items	Item code list	items
qunit	int	c_units	Unit code list	units
quantity	int	Amount	Quantity	quantity
kip	int	Amount	Value in KIP	kipvalue
kind	int	1-3	Kind of expenditure	kindofexpend
produced	int	1-2	Produced in Laos	producedinlaos
purpose	int	1-3	Purpose	purpose
trandate	smalldatetime	Date	Transaction date	trandate
hhid	int		Foreign Key	

2.32.3 Constraints

Type	Name	Keys
FOREIGN KEY	FK_Diary_c_items	itemid
		REFERENCES lecs3dev.dbo.c_items (tid)
FOREIGN KEY	FK_Diary_households	hhid
		REFERENCES lecs3dev.dbo.households (hhid)
PRIMARY KEY (clustered)	PK_Diary	tid

2.33 Timeuse

2.33.1 Graph



2.33.2 Columns

Data Item	Data type	Values	Description	Short Name
persid	int	persid	int	See hhComposition
mdate	smalldatetime	Date	Date	date
activity	int	c_timeuse	Time use activities	activities
starttime	int	Number	When activity commenced	starttime
endtime	int	Number	When activity ended	endtime
hhid	int		Foreign Key	

2.33.3 Constraints

Type	Name	Keys
FOREIGN KEY	FK_Timeuse_c_timeuse	activity
		REFERENCES lecs3dev.dbo.c_timeuse (tid)
FOREIGN KEY	FK_Timeuse_households	hhid
		REFERENCES lecs3dev.dbo.households (hhid)
PRIMARY KEY (clustered)	PK_Timeuse	persid