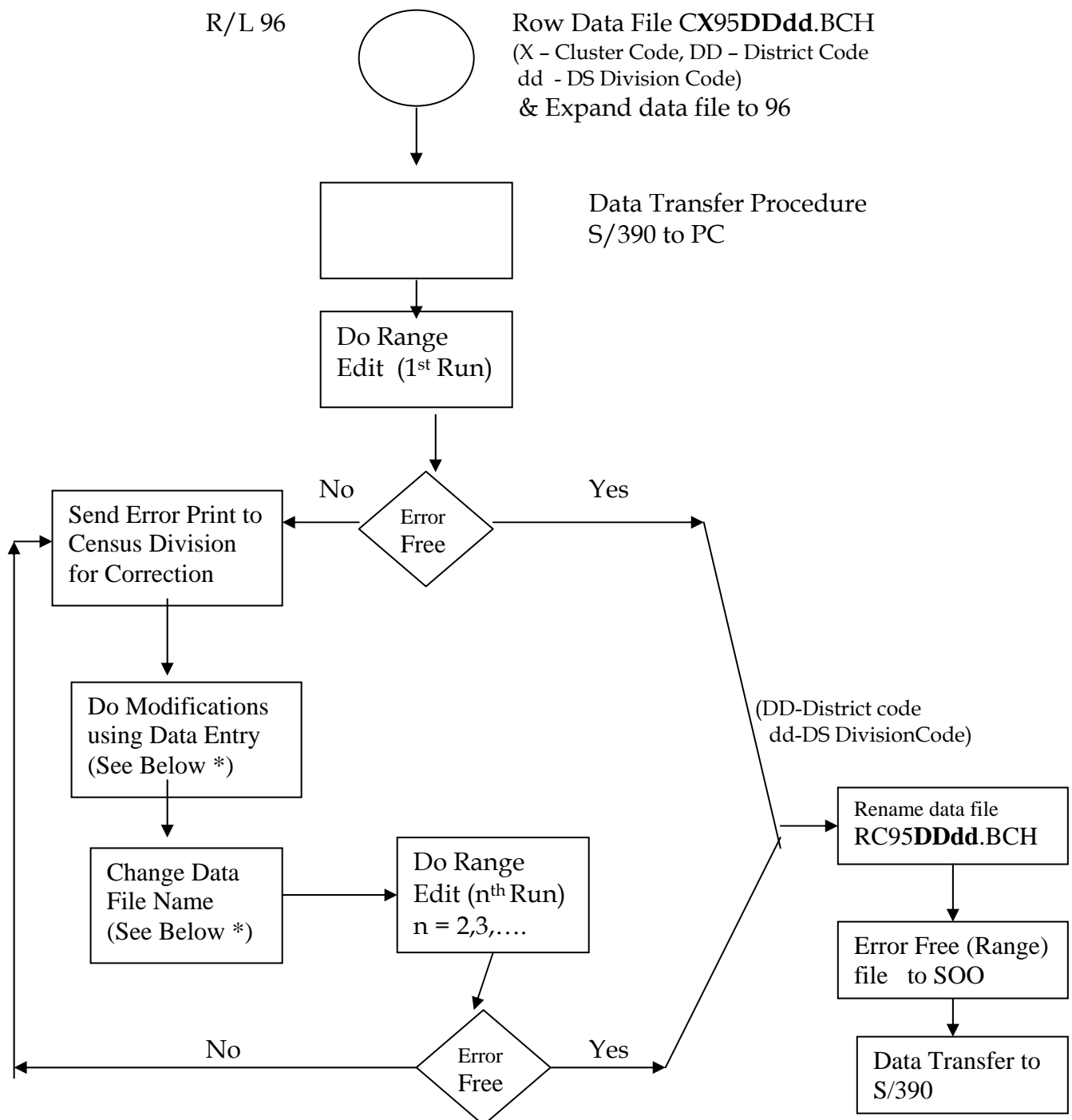


Census of Population and Housing 2001
System Flow Chart - Range Edit
95 % Sample - For DS Division Files



* (X - Cluster Code, DD - District Code, dd - DS Division Code)

Data File

CX95DDdd.BCH(For 1st Run)

R195DDdd.BCH (For 2nd Run)

R295DDdd.BCH (For 3rd Run)

.....

After Corrections

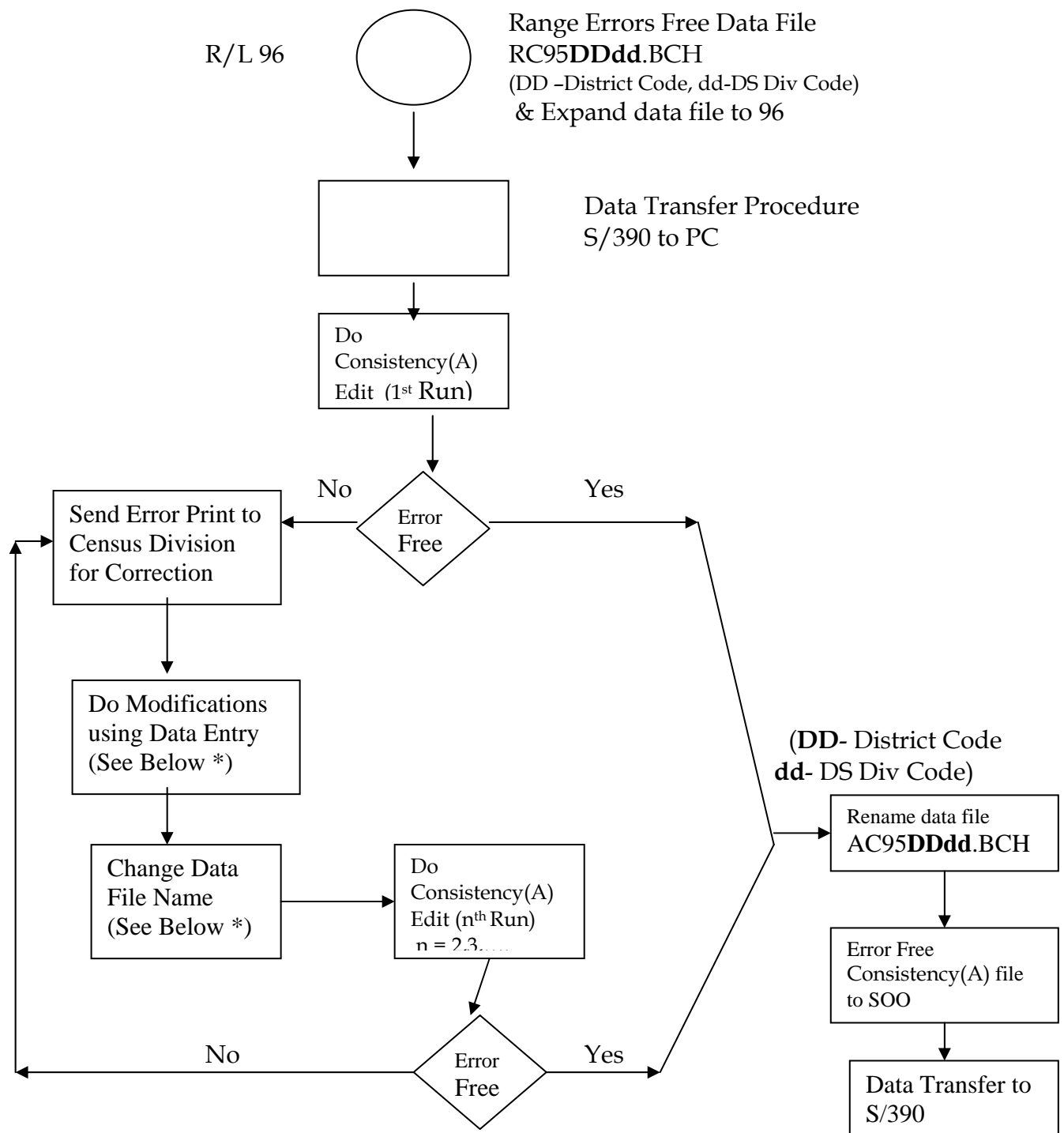
R195DDdd.BCH

R295DDdd.BCH

R395DDdd.BCH

.....

Census of Population and Housing 2001
System Flow Chart – Consistency Edit (A)
95 % Sample – For DS Division Files



Data File

RC95DDdd.BCH (For 1st Run)
 A195DDdd.BCH (For 2nd Run)
 A295DDdd.BCH (For 3rd Run)

.....

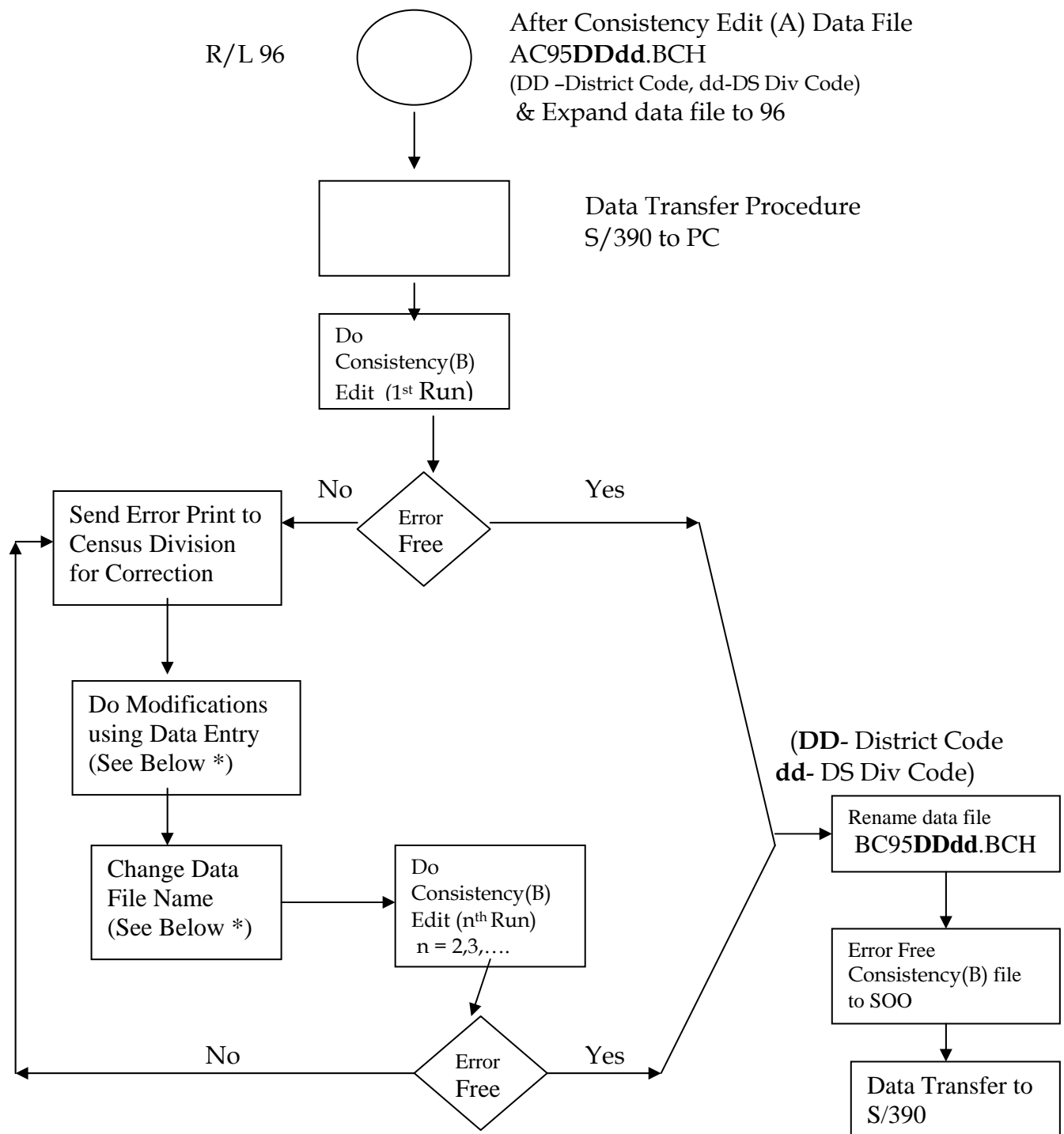
After Corrections

A195DDdd.BCH
 A295DDdd.BCH
 A395DDdd.BCH

.....

(DD- District Code
 dd- DS Div Code)

Census of Population and Housing 2001
System Flow Chart – Consistency Edit (B)
95 % Sample – For DS Division Files



Data File

AC95DDdd.BCH (For 1st Run)
 B195DDdd.BCH (For 2nd Run)
 B295DDdd.BCH (For 3rd Run)

.....

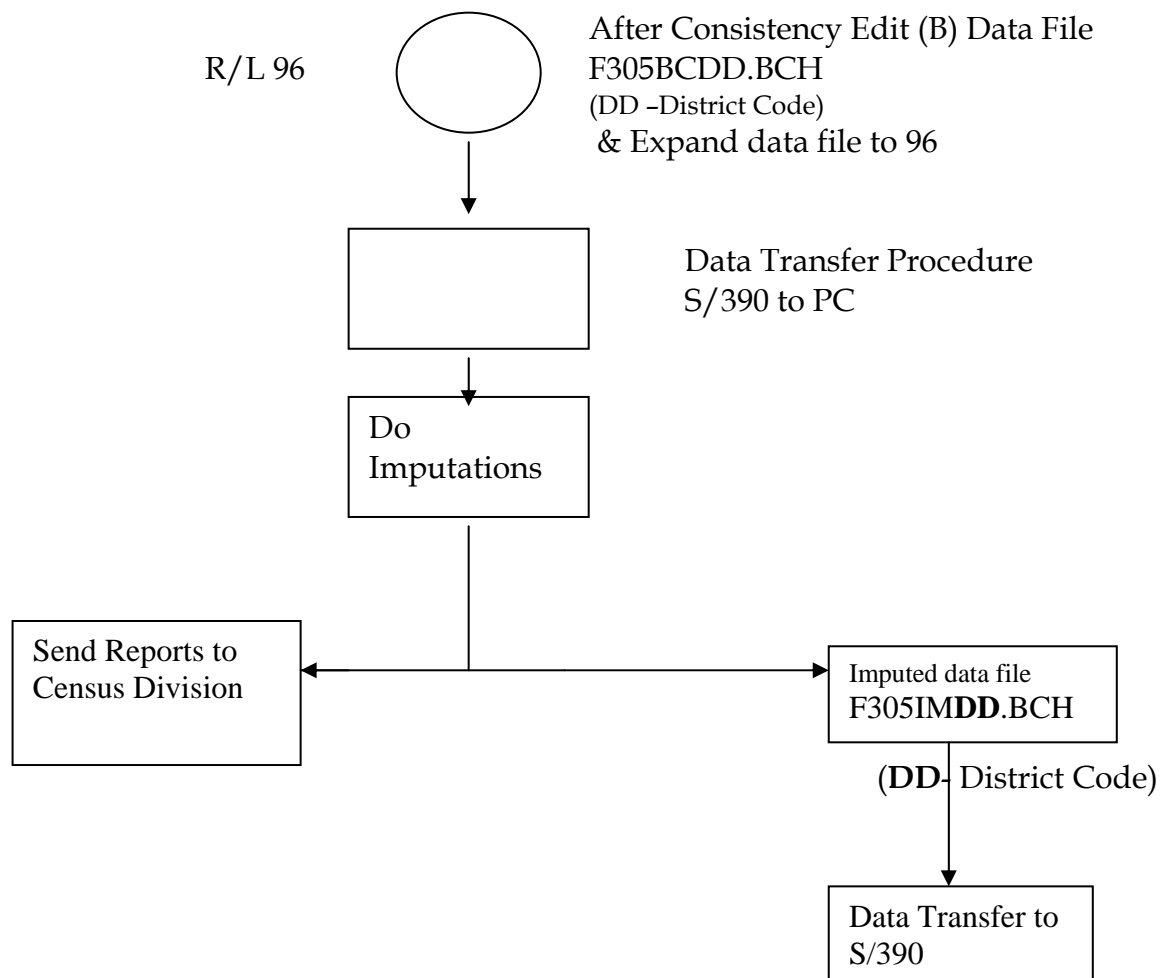
After Corrections

B195DDdd.BCH
 B295DDdd.BCH
 B395DDdd.BCH

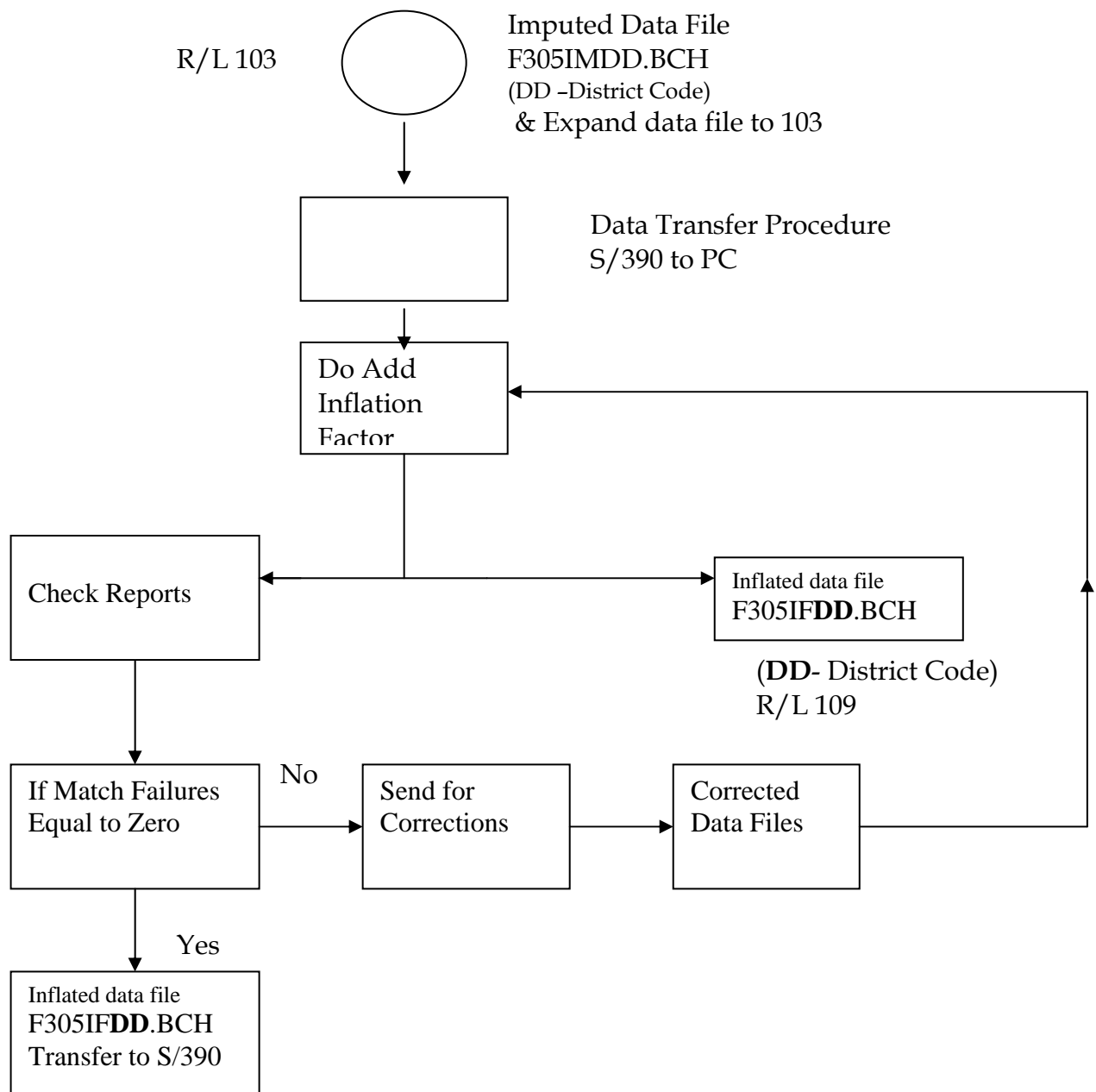
.....

(DD- District Code
 dd- DS Div Code)

Census of Population and Housing 2001
System Flow Chart - Imputations
5 % Sample - For District Files

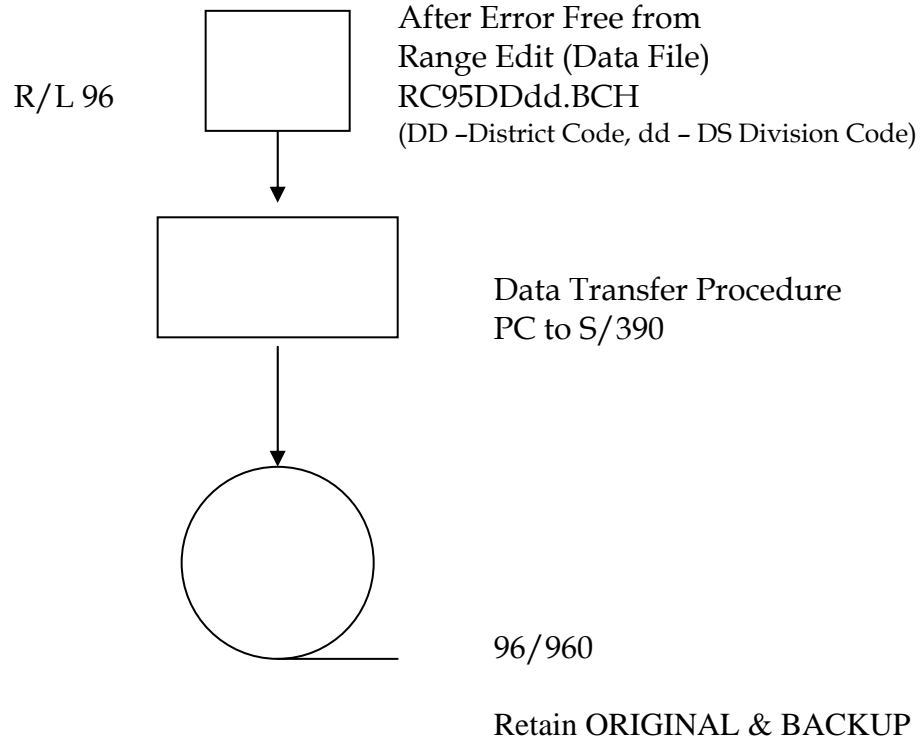


Census of Population and Housing 2001
System Flow Chart – Add Inflation Factors
5 % Sample – For District Files

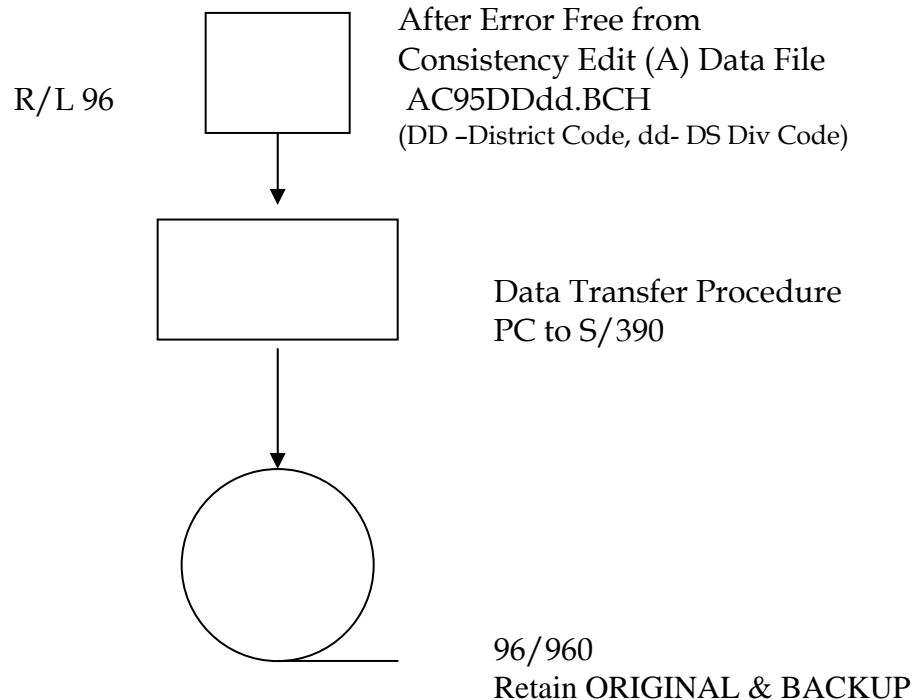


* Note : Few records may delete during Add Inflation Factor procedure

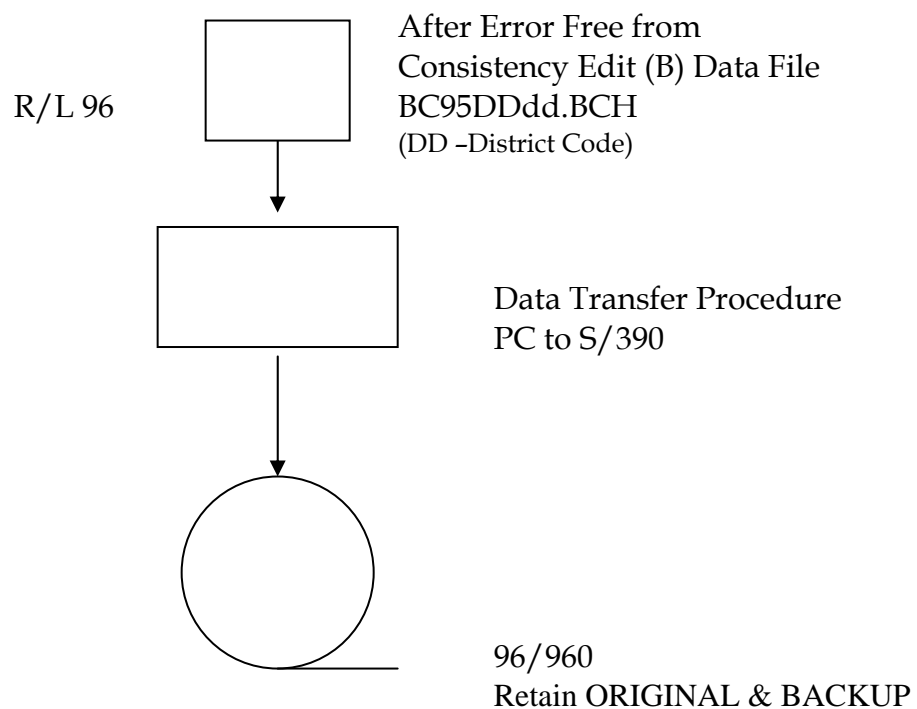
Census of Population and Housing 2001
Flow Chart - Data Loading to S/390
95 % Sample - For DS Division Files



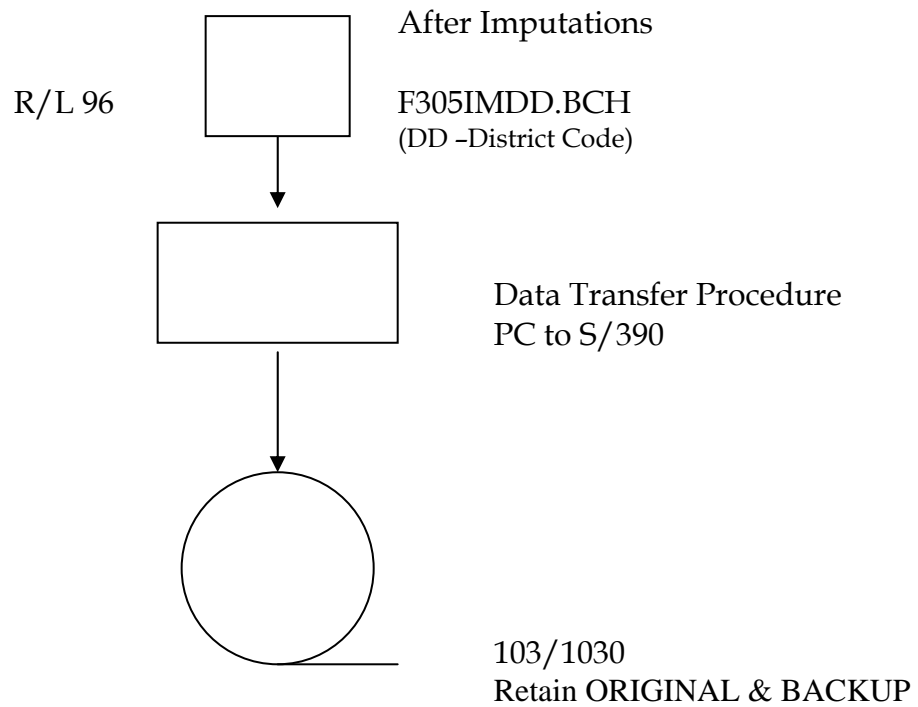
Census of Population and Housing 2001
Flow Chart - Data Loading to S/390
95 % Sample - For DS Division Files



Census of Population and Housing 2001
Flow Chart - Data Loading to S/390
95 % Sample - For DS Division Files



Census of Population and Housing 2001
Flow Chart - Data Loading to S/390
5 % Sample - For District Files



Census of Population and Housing 2001
Flow Chart - Data Loading to S/390
5 % Sample - For District Files

