



The 2010 Indonesia Population Census



**Monitoring of Field Work, Quick Count Using Mobile Phones,
and Other Aspect of Implementing Indonesia's
2010 Population Census**



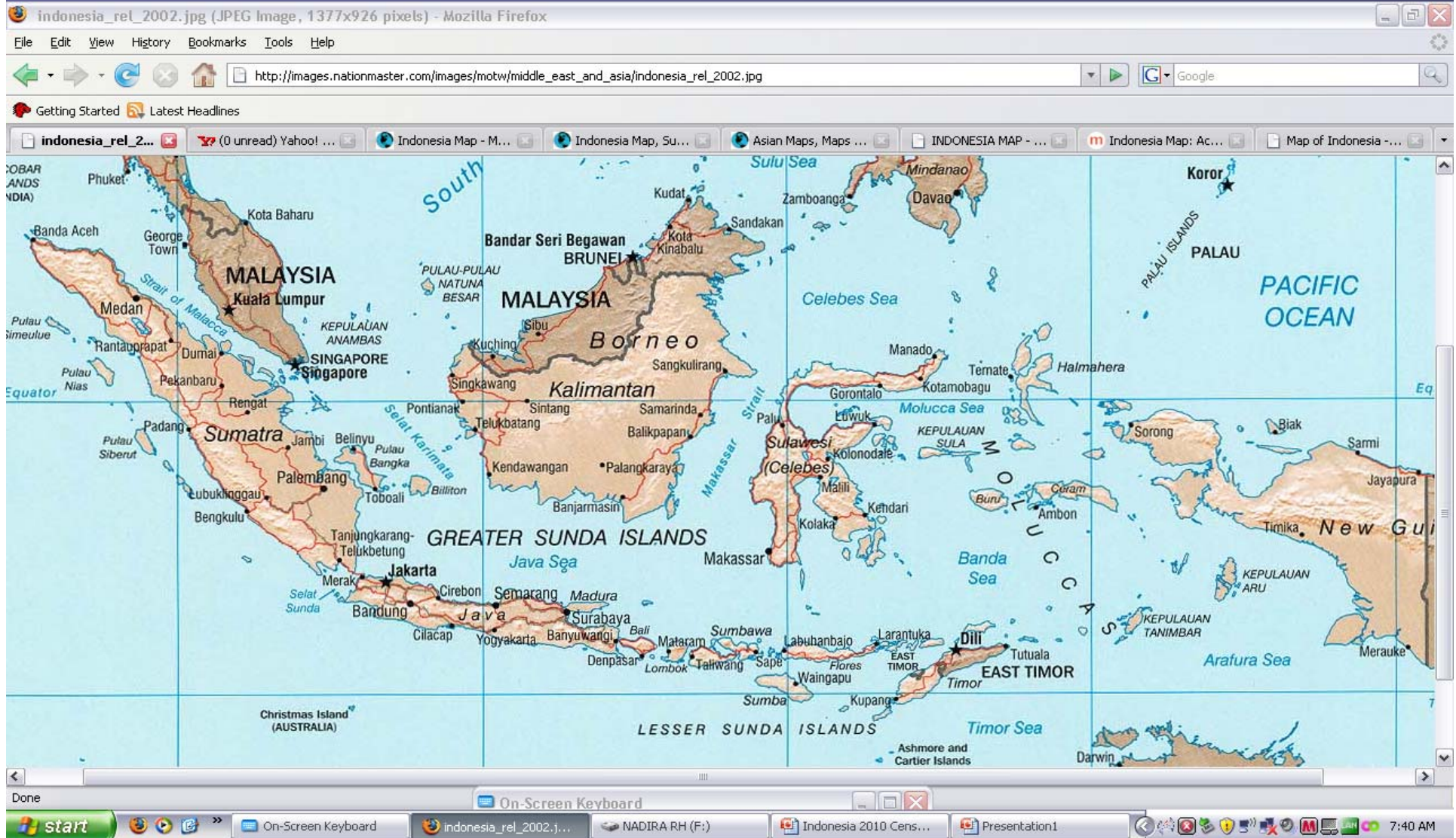
Dr. Wendy Hartanto
BPS-Statistics Indonesia
wendy@bps.go.id

Indonesia

Indonesia consists of:

- 33 Provinces
- 497 Districts/Municipalities
- 6,651 Sub-districts
- 77,126 Villages
- 13,700 Islands

MAP OF INDONESIA



Censuses in Indonesia

- Two censuses during the Dutch Administration: in 1920 & 1930.
- Five censuses after the independence (1945): in 1961, 1971, 1980, 1990 and 2000.
- The 2010 census is the sixth census.

The 2010 Population Census was designed to be used as the basis for

1. Updating the population data bases down to the lowest administrative level (village);
2. Monitoring progress in achieving the Millennium Development Goals (MDG);
3. Preparing small-area statistics;
4. Preparing population projections; and
5. Developing sampling frames for various surveys conducted between 2010-2020

The 2010 Population Census Questionnaires

- Three kinds of questionnaires were used to enumerate the population in the 2010 PC:

C1 – 42 questions, used for people living in households in areas covered by the census mapping;

C2 – 14 questions, used for people living in areas which were not included in the mapping, such as remote/isolated areas, Indonesian diplomats living abroad, etc.; and

L2 – 2 questions (number and sex), used for the homeless, people living on boats, crews of Indonesian ships, and isolated tribal population.

Items Collected in the Census Using Form C1

- Basic demographic characteristics
- Fertility
- Mortality
- Migration (district level)
- Education
- Socio-cultural
- Disability
- Economic activity during previous week
- Housing
- Usage of ICT.

Monitoring Quality and Quick Count

Monitoring Quality

- Monitoring quality conducted by independent teams, 50 lecturers 1150 university students from Statistical Institute and 400 Senior staffs of Central Statistical Office
- Monitoring Quality conducted in the first and second week of field work
- To give early warning about the census field work

Objectives

To monitor
Coverage
Error

Coverage area of data collection in CB, stickers

To monitor
Content
Error

To check selected variables (No. of HH members, sex, age, education, housing characteristics)

To monitoring
SOP

- training, meeting, listing, cross check within the team, enumerate using long form (C1) after listing, draw building in the CB map.

Monitoring and reporting System

- The monitoring coordinators sent monitoring reports through mobile phones (SMS/Text message) to BPS Server
- The reports was disseminated in the Website (<http://kualitassp2010.bps.go.id>), dynamic

WEBSITE MK-SP2010 (1)

Monitoring Kualitas SP 2010 - Mozilla Firefox

File Edit View History Bookmarks Tools Help

http://kualitassp2010/#1

Most Visited Getting Started Latest Headlines Free Hotmail Suggested Sites Web Slice Gallery

Ask Search Amazon CNN YouTube Facebook Weather Games Personas Celebrity Word of the Day E-mail Options

Community BPS - News Monitoring Kualitas SP 2010

Listing

Laporan

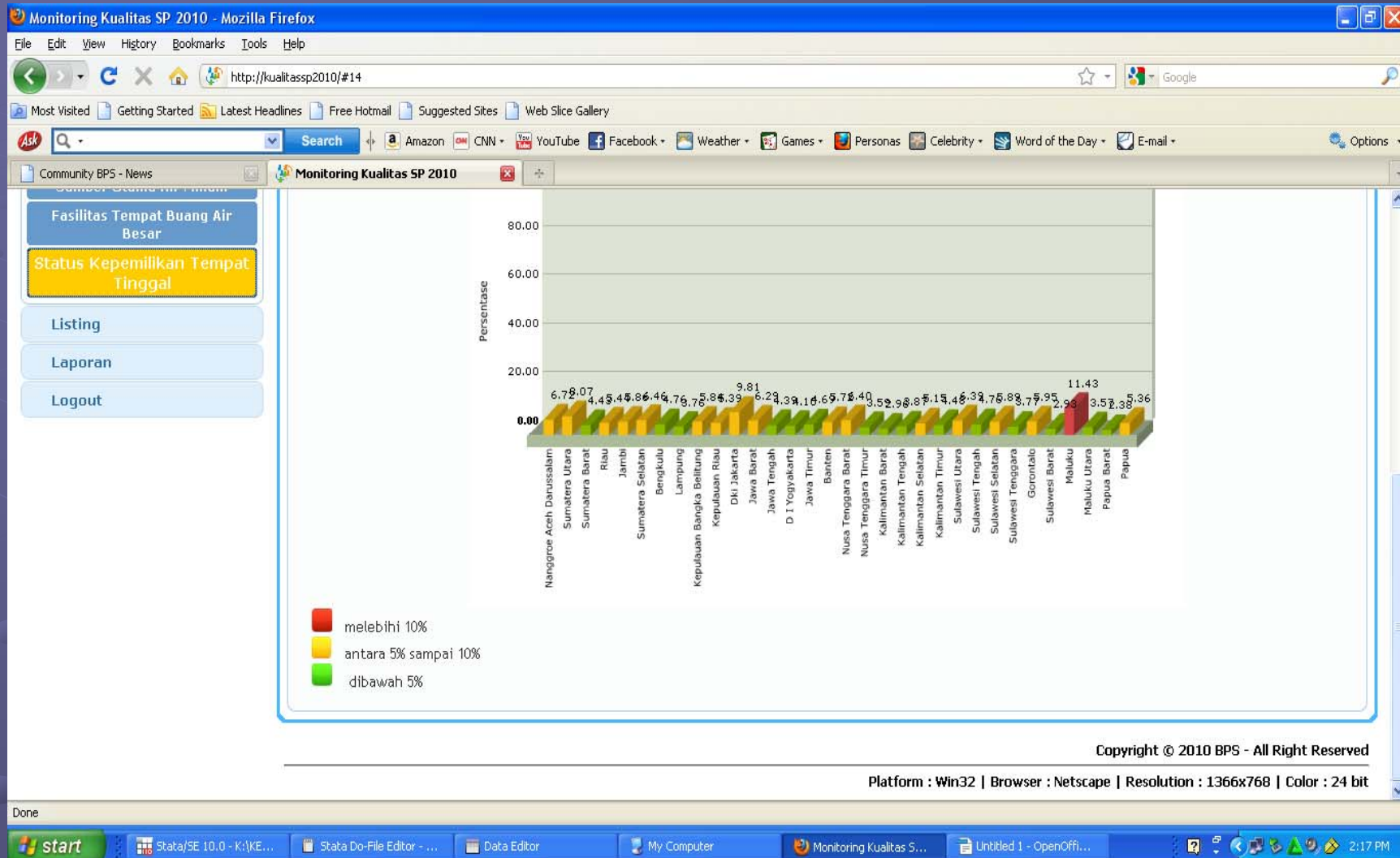
Logout

- **GDR (Perumahan)**
 - **GDR Jenis Lantai**
Persentase ketidakkonsistenan data **jenis lantai** dari PCL dengan data dari PM
 - **GDR Sumber Penerangan Utama**
Persentase ketidakkonsistenan data **sumber penerangan utama** dari PCL dengan data dari PM
 - **GDR Sumber Utama Air Minum**
Persentase ketidakkonsistenan data **sumber utama air minum** dari PCL dengan data dari PM
 - **GDR Fasilitas Tempat Buang Air Besar**
Persentase ketidakkonsistenan data **fasilitas tempat buang air besar** dari PCL dengan data dari PM
 - **GDR Status Kepemilikan Tempat Tinggal**
Persentase ketidakkonsistenan data **status kepemilikan tempat tinggal** dari PCL dengan data dari PM
- **Listing**
 - **Kualitas Peta SP2010-WB**
Persentase **Kualitas Peta SP2010-WB** yang tidak sesuai dengan yang di harapkan
 - **Prosedur Listing Barat Daya**
Persentase yang tidak mengikuti **prosedur listing barat daya** yaitu procedure listing dimulai dari bangunan fisik yang berada di ujung barat daya ke arah timur
 - **Prosedur Listing per SLS**
Persentase yang tidak mengikuti prosedur listing yang mengharuskan menyelesaikan proses **listing per Satuan Lingkungan Setempat (SLS)**
 - **Penempelan Stiker**
Persentase jumlah bangunan sensus yang tidak ada **stiker**
 - **Nomor Bangunan Fisik**
Persentase kesesuaian sebagian kecil (<75%) **nomor bangunan fisik di peta WB dan daftar SP2010-L1**
 - **pemeriksaan silang**
Persentase yang tidak melaksanakan **pemeriksaan silang daftar SP2010-L1**
 - **L1 dan C1 terpisah**

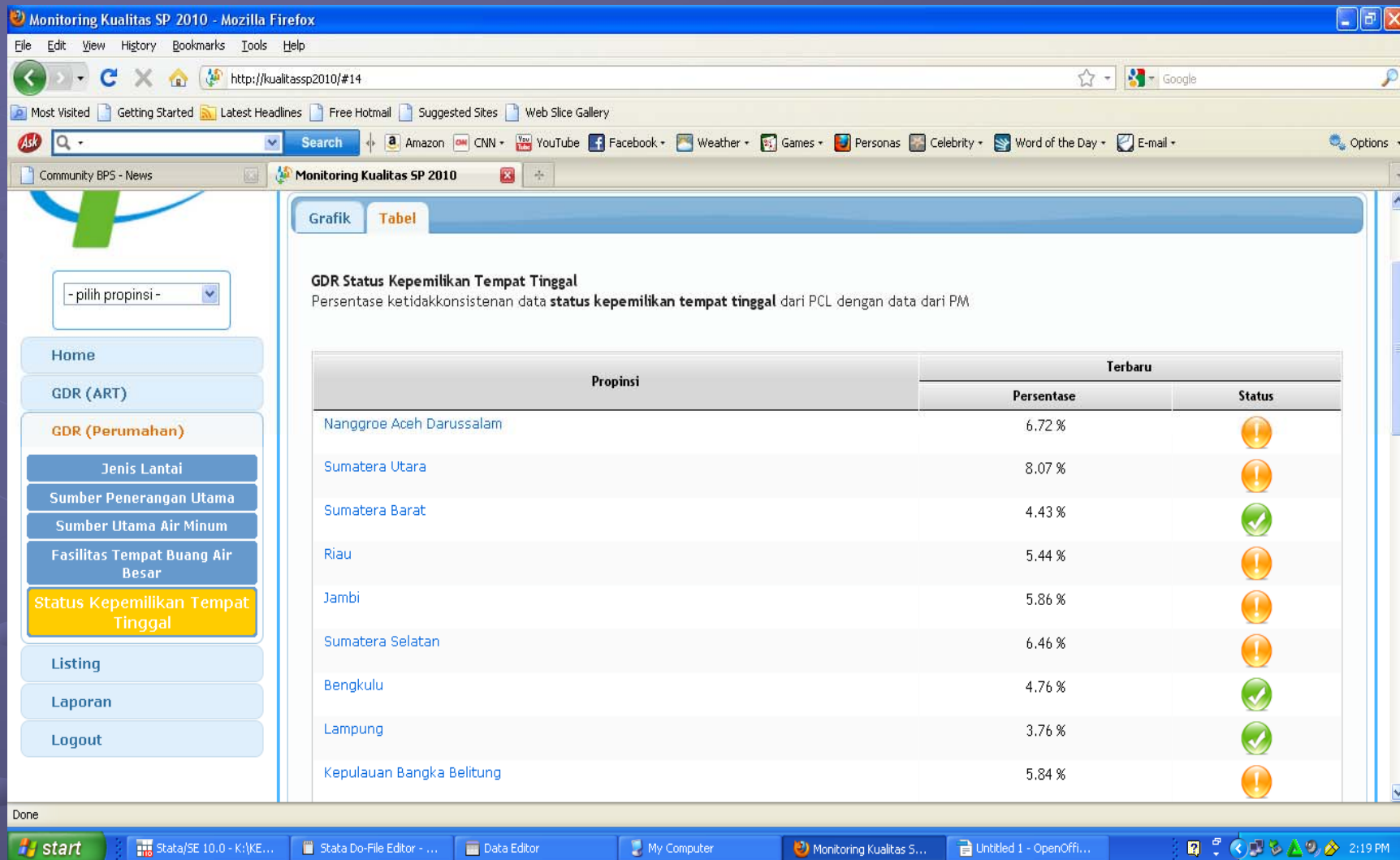
Done

start Stata/SE 10.0 - K:\KE... Stata Do-File Editor - ... Data Editor My Computer Monitoring Kualitas S... Untitled 1 - OpenOffi... 2:35 PM

WEBSITE MK-SP2010 (2)



WEBSITE MK-SP2010 (3)



Monitoring Kualitas SP 2010 - Mozilla Firefox

File Edit View History Bookmarks Tools Help

http://kualitassp2010/#14

Most Visited Getting Started Latest Headlines Free Hotmail Suggested Sites Web Slice Gallery

Search Amazon CNN YouTube Facebook Weather Games Personas Celebrity Word of the Day E-mail Options

Community BPS - News Monitoring Kualitas SP 2010

Grafik Tabel

GDR Status Kepemilikan Tempat Tinggal

Persentase ketidakkonsistenan data status kepemilikan tempat tinggal dari PCL dengan data dari PM

Propinsi	Terbaru	
	Persentase	Status
Nanggroe Aceh Darussalam	6.72 %	!
Sumatera Utara	8.07 %	!
Sumatera Barat	4.43 %	✓
Riau	5.44 %	!
Jambi	5.86 %	!
Sumatera Selatan	6.46 %	!
Bengkulu	4.76 %	✓
Lampung	3.76 %	✓
Kepulauan Bangka Belitung	5.84 %	!

Home

GDR (ART)

GDR (Perumahan)

Jenis Lantai

Sumber Penerangan Utama

Sumber Utama Air Minum

Fasilitas Tempat Buang Air Besar

Status Kepemilikan Tempat Tinggal

Listing

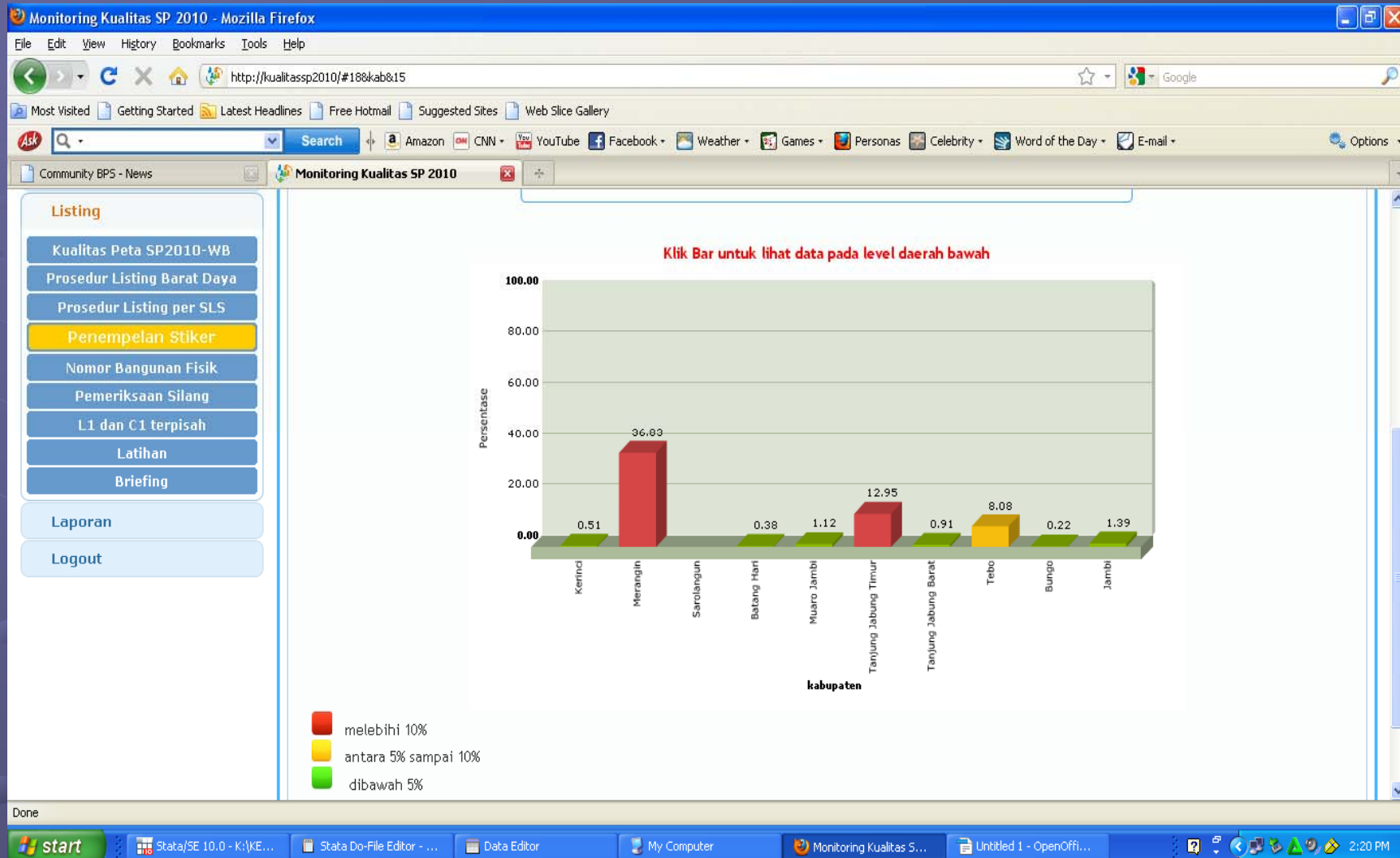
Laporan

Logout

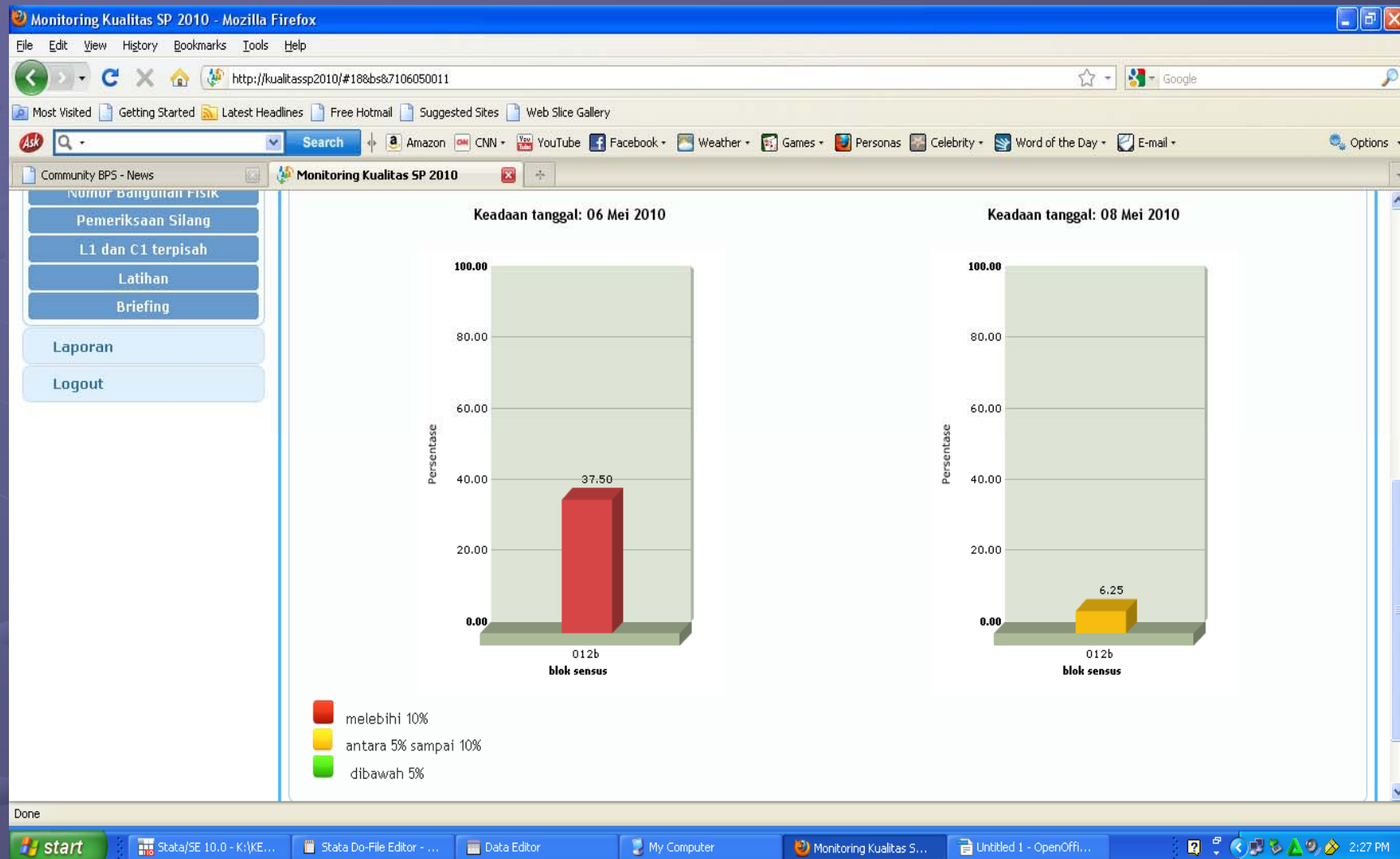
Done

start Stata/SE 10.0 - K:\KE... Stata Do-File Editor - ... Data Editor My Computer Monitoring Kualitas S... Untitled 1 - OpenOffi... 2:19 PM

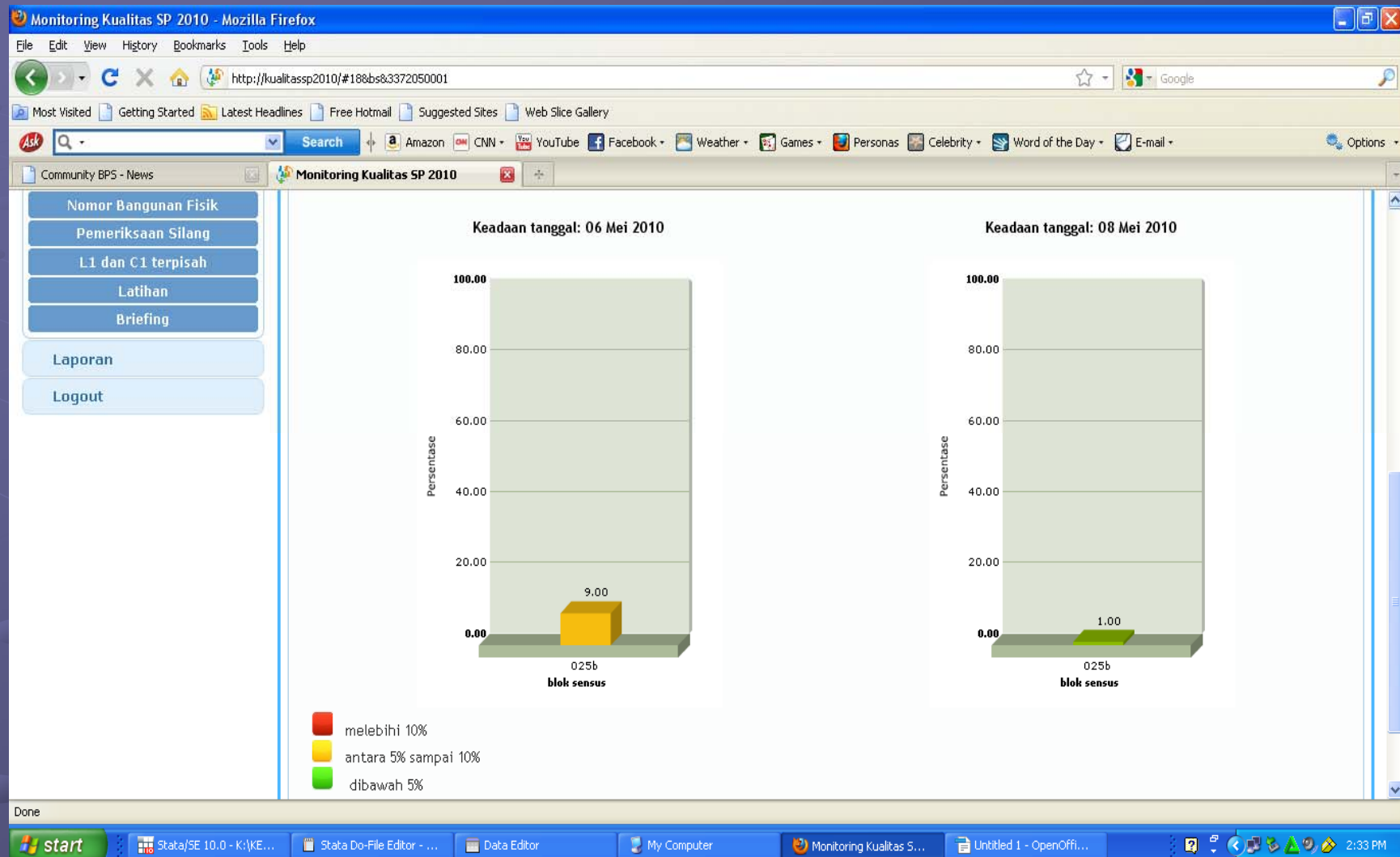
WEBSITE MK-SP2010 (4)



WEBSITE MK-SP2010 (5)



WEBSITE MK-SP2010 (6)



Gross Difference Rate (Housing variables)

No	Variable	Category		
		Low (< 5%)	Medium (5 – 10%)	High (> 10%)
(1)	(2)	(3)	(4)	(5)
1	Type of floor	168	117	97
		(43,98)	(30,63)	(25,39)
2	Source of light	185	141	56
		(48,43)	(36,91)	(14,66)
3	Source of drinking water	64	65	253
		(16,75)	(17,02)	(66,23)
4	Toilette facility	129	124	129
		(33,77)	(32,46)	(33,77)
5	Ownership of house	221	106	55
		(57,85)	(27,75)	(14,40)

Number and percentage of Districts by Gross Difference Rate (individual variable)

No	Variable	Category		
		Low (< 5%)	Medium (5 – 10%)	High (> 10%)
(1)	(2)	(3)	(4)	(5)
1	Relationship with Head of HH	375	7	0
		(98,17)	(1,83)	(0)
2	Sex	379	3	0
		(99,21)	(0,79)	(0)
3	Age	370	11	1
		(96,86)	(2,88)	(0,26)
4	Schooling Status	315	64	3
		(82,46)	(16,75)	(0,79)
5	Marital Status	378	3	1
		(98,95)	(0,79)	(0,26)

QUICK COUNT



Quick Count Reporting

- All mobile phone numbers of Field Coordinators, Sub-district Coordinators, and District Coordinators must be recorded.
- After completing the listing of each CB, Field Coordinators sent messages (sms/text) through mobile phones to the BPS server.
- Message: ID of CB, No. of HHs, Males, Females, Total
- BPS disseminated all information on Website
- Comparisons made between no. of HH in the mapping and census listing
- District coordinators sent all completed listings through email from BPS District Offices everyday

MONITORING LISTING (L1) MELALUI SMS



0852 6443 2010 0852 6465 2010 0857 6127 2010 0819 9080 2010 0838 9100 2010

Mobile Call Center==>0812 8107 0701-05

Masukan dari SMS

Perbedaan SMS - RBL1

SP1990, SP2000, SMS, RBL1

Sdr. Hermawan Agustina

Keluar

xls

[Tutup Grafik]

Indonesia

Indonesia/Propinsi	Blok Sensus (BS)			Rumahtangga					Penduduk			Rata2 ART	Sex Ratio
	Hasil Peme-taan	Hasil Listing	%	Jml KK Hasil Rekap Desa	Ruta Hasil Listing	%	C1	%	Laki-laki	Perempuan	Total		
00. INDONESIA	842,851	843,040	100.0	64,145,610	61,206,274	95.4	36,386,147	59.4	118,556,848	117,642,490	236,199,338	3.9	101
▶ 11. Nanggroe Aceh Darussalam (23)	16,118	16,118	100.0	1,158,845	1,065,091	91.9	1,037,502	97.4	2,224,849	2,229,998	4,454,847	4.2	100
▶ 12. Sumatera Utara (33)	40,224	40,302	100.2	3,123,952	3,043,784	97.4	2,679,404	88.0	6,439,353	6,477,648	12,917,001	4.2	99
▶ 13. Sumatera Barat (19)	15,182	15,182	100.0	1,171,669	1,153,405	98.4	127,056	11.0	2,398,160	2,441,392	4,839,552	4.2	98
▶ 14. Riau (12)	18,954	18,954	100.0	1,345,736	1,334,195	99.1	267,207	20.0	2,836,237	2,677,156	5,513,393	4.1	106
▶ 15. Jambi (11)	11,404	11,404	100.0	799,017	764,438	95.7	684,965	89.6	1,550,228	1,493,477	3,043,705	4.0	104
▶ 16. Sumatera Selatan (15)	26,433	26,433	100.0	1,900,340	1,813,419	95.4	420,314	23.2	3,753,315	3,645,426	7,398,741	4.1	103
▶ 17. Bengkulu (10)	6,586	6,586	100.0	444,286	435,699	98.1	424,559	97.4	870,625	842,687	1,713,312	3.9	103
▶ 18. Lampung (14)	27,871	27,871	100.0	1,964,600	1,924,669	98.0	1,462,460	76.0	3,866,293	3,676,917	7,543,210	3.9	105
▶ 19. Kepulauan Bangka Belitung (7)	4,093	4,093	100.0	302,870	312,807	103.3	314,823	100.6	632,065	586,419	1,218,484	3.9	108
▶ 21. Kepulauan Riau (7)	5,955	5,955	100.0	441,077	443,861	100.6	201,521	45.4	861,226	818,573	1,679,799	3.8	105
▶ 31. DKI Jakarta (6)	31,748	31,748	100.0	2,529,345	2,554,252	101.0	247,603	9.7	4,906,729	4,753,546	9,660,275	3.8	103
▶ 32. Jawa Barat (26)	147,158	147,229	100.0	11,988,189	11,535,095	96.2	5,066,441	43.9	21,773,109	21,091,975	42,865,084	3.7	103
▶ 33. Jawa Tengah (35)	116,534	116,534	100.0	9,435,282	8,696,381	92.2	8,305,346	95.5	16,010,475	16,302,818	32,313,293	3.7	98
▶ 34. DI Yogyakarta (5)	12,016	12,019	100.0	990,202	1,035,142	104.5	1,054,053	101.8	1,703,465	1,746,109	3,449,574	3.3	98
▶ 35. Jawa Timur (38)	146,184	146,210	100.0	11,112,452	10,392,581	93.5	4,701,297	45.9	18,278,920	18,871,341	37,150,270	2.6	97

MONITORING LISTING (L1) MELALUI SMS



0852 6443 2010

0852 6465 2010

0857 6127 2010

0819 9080 2010

0838 9100 2010

Mobile Call Center==>0812 8107 0701-05

Masukan dari SMS

Perbedaan SMS - RBL1

SP1990, SP2000, SMS, RBL1

Sdr. Hermawan Agustina

Keluar

xls

Click row for detail
province (17)

[Tutup Grafik]

Indonesia

Indonesia/Propinsi	Blok Sensus (BS)			Jml Ha Rek De	Rumahtangga				Penduduk			Rata2 ART	Sex Ratio
	Hasil Peme taan	Hasil Listing	%		Ruta Hasil Listing	%	C1	%	Laki-laki	Perempuan	Total		
00. INDONESIA	842,851	843,040	100.0	64,145	61,206,274	95.4	36,386,147	59.4	118,556,848	117,642,490	236,199,338	3.9	101
▶ 11. Nanggroe Aceh Darussalam (23)	16,118	16,118	100.0	1,158	1,065,091	91.9	1,037,502	97.4	2,224,849	2,229,998	4,454,847	4.2	100
▶ 12. Sumatera Utara (33)	40,224	40,302	100.2	3,123	3,043,784	97.4	2,679,404	88.0	6,439,353	6,477,648	12,917,001	4.2	99
▶ 13. Sumatera Barat (19)	15,182	15,182	100.0	1,171	1,153,405	98.4	127,056	11.0	2,398,160	2,441,392	4,839,552	4.2	98
▶ 14. Riau (12)	18,954	18,954	100.0	1,345	1,334,195	99.1	267,207	20.0	2,836,237	2,677,156	5,513,393	4.1	106
▶ 15. Jambi (11)	11,404	11,404	100.0	799	764,438	95.7	684,965	89.6	1,550,228	1,493,477	3,043,705	4.0	104
▶ 16. Sumatera Selatan (15)	26,433	26,433	100.0	1,900	1,813,419	95.4	420,314	23.2	3,753,315	3,645,426	7,398,741	4.1	103
▶ 17. Bengkulu (10)	6,586	6,586	100.0	444	435,699	98.1	424,559	97.4	870,625	842,687	1,713,312	3.9	103
▶ 18. Lampung (14)	27,871	27,871	100.0	1,964	1,924,669	98.0	1,462,460	76.0	3,866,293	3,676,917	7,543,210	3.9	105
▶ 19. Kepulauan Bangka Belitung (7)	4,093	4,093	100.0	302	312,807	103.3	314,823	100.6	632,065	586,419	1,218,484	3.9	108
▶ 21. Kepulauan Riau (7)	5,955	5,955	100.0	441	443,861	100.6	201,521	45.4	861,226	818,573	1,679,799	3.8	105
▶ 31. Dki Jakarta (6)	31,748	31,748	100.0	2,529	2,554,252	101.0	247,603	9.7	4,906,729	4,753,546	9,660,275	3.8	103
▶ 32. Jawa Barat (26)	147,158	147,229	100.0	11,988	11,535,095	96.2	5,066,441	43.9	21,773,109	21,091,975	42,865,084	3.7	103
▶ 33. Jawa Tengah (35)	116,534	116,534	100.0	9,435	8,696,381	92.2	8,305,346	95.5	16,010,475	16,302,818	32,313,293	3.7	98
▶ 34. DI Yogyakarta (5)	12,016	12,019	100.0	990	1,035,142	104.5	1,054,053	101.8	1,703,465	1,746,109	3,449,574	3.3	98

MONITORING LISTING (L1) MELALUI SMS



0852 6443 2010

0852 6465 2010

0857 6127 2010

0819 9080 2010

0838 9100 2010

Mobile Call Center==>0812 8107 0701-05

Masukan dari SMS

Perbedaan SMS - RBL1

SP1990, SP2000, SMS, RBL1

Sdr. Hermawan Agustina

Keluar

xls

Click row for detail district (08)

[Tutup Grafik]

Indonesia » 17. Bengkulu

Propinsi/Kab	Blok Sensus (BS)			Jm H Re D	Rumahtangga				Penduduk			Rata2 ART	Sex Ratio
	Hasil Peme taan	Hasil Listing	%		Ruta Hasil Listing	%	C1	%	Laki-laki	Perempuan	Total		
00. BENGKULU	6,586	6,586	100.0	44	435,699	98.1	424,559	97.4	870,625	842,687	1,713,312	3.9	103.3
▶ 01. Bengkulu Selatan (11)	577	577	100.0	3	34,250	100.7	34,248	100.0	72,583	71,397	143,980	4.2	101.7
▶ 02. Rejang Lebong (15)	965	965	100.0	6	64,230	96.4	62,040	96.6	123,116	121,431	244,547	3.8	101.4
▶ 03. Bengkulu Utara (12)	1,081	1,081	100.0	7	67,042	92.7	62,574	93.3	131,470	126,097	257,567	3.8	104.3
▶ 04. Kaur (15)	521	521	100.0	2	25,951	98.8	26,167	100.8	54,904	51,206	106,110	4.1	107.2
▶ 05. Seluma (14)	676	676	100.0	4	44,329	94.8	44,508	100.4	89,639	85,449	175,088	3.9	104.9
▶ 06. Mukomuko (15)	610	610	100.0	3	38,225	96.0	38,012	99.4	81,905	75,043	156,948	4.1	109.1
▶ 07. Lebong (13)	511	511	100.0	2	26,107	93.1	23,560	90.2	49,244	49,041	98,285	3.8	100.4
▶ 08. Kepahiang (8)	532	532	100.0	3	31,665	91.5	31,774	100.3	63,986	60,674	124,660	3.9	105.5
▶ 09. Bengkulu Tengah (10)	336	336	100.0	2	24,164	89.8	24,117	99.8	50,373	47,608	97,981	4.1	105.8
▶ 10. Bengkulu (8)	777	777	100.0	6	79,736	115.8	77,559	97.3	153,405	154,741	308,146	3.9	99.1

MONITORING LISTING (L1) MELALUI SMS



0852 6443 2010 0852 6465 2010 0857 6127 2010 0819 9080 2010 0838 9100 2010

Mobile Call Center==>0812 8107 0701-05

Masukan dari SMS

Perbedaan SMS - RBL1

SP1990, SP2000, SMS, RBL1

Sdr. Hermawan Agustina

Keluar

xls

Click row for detail village (004)

[Tutup Grafik]

Indonesia »

17. Bengkulu »

08. Kepahiang »

030. Seberang Musi

Kecamatan/Desa	Blok Sensus (BS)			Rumahtangga						Penduduk			Rata2 ART	Sex Ratio
	Hasil Peme-taan	Hasil Listing	%	Jml KK Hasil Rekap Desa	Ruta Hasil Listing	%	C1	%		Laki-laki	Perempuan	Total		
000. SEBERANG MUSI	35	35	100.0	1,839	1,910	104.0	1,910	99.9		3,455	3,187	6,642	3.5	108.4
▶ 001. Benuang Galing	5	5	100.0	267	258	134.1	379	105.9		603	515	1,118	3.1	117.1
▶ 002. Air Selimang	4	4	100.0	117	224	191.5	195	87.1		393	386	779	3.5	101.8
▶ 003. Tebat Laut	5	5	100.0	220	215	93.5	212	98.6		378	335	713	3.3	112.8
▶ 004. Taba Padang	3	3	100.0	199	201	101.0	203	101.0		383	333	716	3.6	115.0
▶ 005. Lubuk Sahung	2	2	100.0	222	211	95.0	210	99.5		401	361	762	3.6	111.1
▶ 006. Temdak	3	3	100.0	119	133	111.8	133	100.0		258	234	492	3.7	110.3
▶ 007. Kandang	4	4	100.0	239	185	77.4	185	100.0		345	344	689	3.7	100.3
▶ 008. Cirebon Baru	3	3	100.0	129	121	93.8	122	100.8		241	238	479	4.0	101.3
▶ 009. Talang Gelompok	3	3	100.0	157	131	83.4	127	96.9		229	206	435	3.3	111.2
▶ 010. Air Pesi	3	3	100.0	160	133	83.1	144	108.3		224	235	459	3.5	95.3

MONITORING LISTING (L1) MELALUI SMS



0852 6443 2010

0852 6465 2010

0857 6127 2010

0819 9080 2010

0838 9100 2010

Mobile Call Center==>0812 8107 0701-05

Masukan dari SMS

Perbedaan SMS - RBL1

SP1990, SP2000, SMS, RBL1

Sdr. Hermawan Agustina

Keluar

xls

Click row for detail
sub district (030)

[Tutup Grafik]

Indonesia »

17. Bengkulu »

08. Kepahiang

Kab/Kecamatan	Blok Sensus (BS)			Jumlah Rumah Dw...	Rumahtangga				Penduduk			Rata2 ART	Sex Ratio
	Hasil Peme- taan	Hasil Listing	%		Ruta Hasil Listing	%	C1	%	Laki-laki	Perempuan	Total		
000. KEPAHANG	532	532	100.0	34,225	31,665	91.5	31,774	100.3	63,986	60,674	124,660	3.9	105.5
▶ 010. Muara Kemumu (11)	72	72	100.0	5,260	3,719	70.7	3,761	101.1	6,972	6,094	13,066	3.5	114.4
▶ 020. Bermani Ilir (18)	85	85	100.0	3,860	3,373	87.4	3,553	105.3	6,870	6,214	13,084	3.9	110.6
▶ 030. Seberang Musi (10)	35	35	100.0	1,839	1,912	104.0	1,910	99.9	3,455	3,187	6,642	3.5	108.4
▶ 040. Tebat Karai (14)	59	59	100.0	2,908	2,913	100.2	2,951	101.3	6,124	5,891	12,015	4.1	104.0
▶ 050. Kepahiang (18)	130	130	100.0	9,805	9,812	100.1	9,881	100.7	20,373	19,973	40,346	4.1	102.0
▶ 060. Kaba Wetan (14)	44	44	100.0	3,256	2,777	85.3	2,781	100.1	5,360	4,917	10,277	3.7	109.0
▶ 070. Ujan Mas (17)	74	74	100.0	5,135	4,802	93.5	4,544	94.6	9,868	9,569	19,437	4.0	103.1
▶ 080. Merigi (8)	33	33	100.0	2,562	2,357	92.0	2,393	101.5	4,964	4,829	9,793	4.2	102.8

MONITORING LISTING (L1) MELALUI SMS



0852 6443 2010 0852 6465 2010 0857 6127 2010 0819 9080 2010 0838 9100 2010

Mobile Call Center==>0812 8107 0701-05

Masukan dari SMS

Perbedaan SMS - RBL1

SP1990, SP2000, SMS, RBL1

Sdr. Hermawan Agustina

Keluar

xls

Click row for detail village (003)

[Tutup Grafik]

Indonesia » 17. Bengkulu » 08. Kepahiang » 030. Seberang Musi

Kecamatan/Desa	Blok Sensus (BS)			Rumahtangga				Penduduk			Rata2 ART	Sex Ratio
	Hasil Peme taan	Hasil Listing	%	Jml KK Hasil Rekap Desa	Ruta Hasil Listing	%	%	Laki-laki	Perempuan	Total		
000. SEBERANG MUSI	35	35	100.0	1,839	1,912	104.0	1,912	3,455	3,187	6,642	3.5	108.4
▶001. Benuang Galing	5	5	100.0	267	358	134.1	358	603	515	1,118	3.1	117.1
▶002. Air Selimang	4	4	100.0	117	224	191.5	224	393	386	779	3.5	101.8
▶003. Tebat Laut	5	5	100.0	230	215	93.5	212	378	335	713	3.3	112.8
▶004. Taba Padang	3	3	100.0	199	201	101.0	203	383	333	716	3.6	115.0
▶005. Lubuk Sahung	2	2	100.0	222	211	95.0	210	401	361	762	3.6	111.1
▶006. Temdak	3	3	100.0	119	133	111.8	133	258	234	492	3.7	110.3
▶007. Kandang	4	4	100.0	239	185	77.4	185	345	344	689	3.7	100.3
▶008. Cirebon Baru	3	3	100.0	129	121	93.8	122	241	238	479	4.0	101.3

MONITORING LISTING (L1) MELALUI SMS



0852 6443 2010 0852 6465 2010 0857 6127 2010 0819 9080 2010 0838 9100 2010

Mobile Call Center==>0812 8107 0701-05

Masukan dari SMS

Perbedaan SMS - RBL1

SP1990, SP2000, SMS, RBL1

Sdr. Hermawan Agustina

Keluar

xls

Click row for detail village (003)

Indonesia »

17. Bengkulu »

08. Kepahiang »

030. Seberang Musi »

005. Lubuk Sahul

Desa/Blok Sensus	Rumahtangga					Penduduk			Rata2 ART	Sex Ratio
	Jml KK Hasil Rekap Desa	Ruta Hasil Listing	%	C1	%	Laki-laki	Perempuan	Total		
001 B (6281278072991:Eko)	140	131	93.6	131	100.0	254	223	477	3.6	113.9
002 B (6281278072991:Eko)	82	80	97.6	79	98.8	147	138	285	3.6	106.5

MONITORING LISTING (L1) MELALUI SMS

Masukan dari SMS



0852 6443 2010 0852 6465 2010 0857 6127 2010 0819 9080 2010 0838 9100 2010

Mobile Call Center==>0812 8107 0701-05

Perbedaan SMS - RBL1 SP1990, SP2000, SMS, RBL1

Sdr. Hermawan Agustina

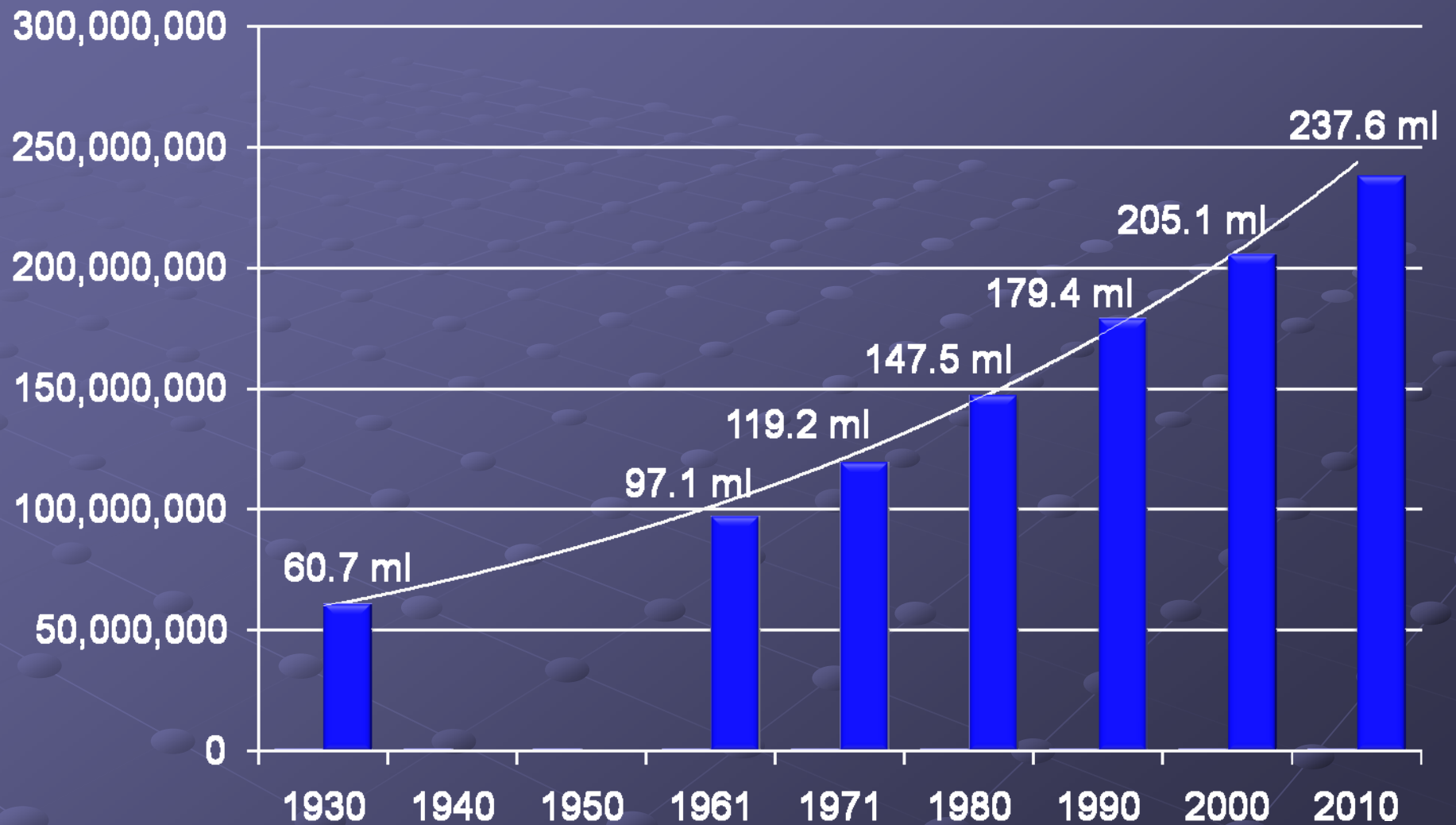
Keluar

RBL1 versi Jum'at 18 Juni 2010

Indonesia » 17. Bengkulu » 08. Kepahiang

Kab/Kec	Rumahtangga			Laki-laki			Perempuan			Penduduk		
	SMS	RBL1	Beda	SMS	RBL1	Beda	SMS	RBL1	Beda	SMS	RBL1	Beda
000. KEPAHIANG	31,665	31,660	5	63,986	63,492	494	60,674	60,539	135	124,660	124,031	629
▶ 010. Muara Kemumu	3,719	3,749	-30	6,972	6,605	367	6,094	5,942	152	13,066	12,547	519
▶ 020. Bermani Ilir	3,373	3,501	-128	6,870	7,056	-186	6,214	6,589	-375	13,084	13,645	-561
▶ 030. Seberang Musi	1,912	1,910	2	3,455	3,455	0	3,187	3,187	0	6,642	6,642	0
▶ 040. Tebat Karai	2,913	2,949	-36	6,124	6,261	-137	5,891	5,998	-107	12,015	12,259	-244
▶ 050. Kepahiang	9,812	9,815	-3	20,373	20,007	366	19,973	19,579	394	40,346	39,586	760
▶ 060. Kaba Wetan	2,777	2,794	-17	5,360	5,402	-42	4,917	4,949	-32	10,277	10,351	-74
▶ 070. Ujan Mas	4,802	4,548	254	9,868	9,716	152	9,569	9,438	131	19,437	19,154	283
▶ 080. Merigi	2,357	2,394	-37	4,964	4,990	-26	4,829	4,857	-28	9,793	9,847	-54

Population Trend



2010 PC Logo and Motto
BE SURE YOU ARE COUNTED

