
Statistical release

P0211

Quarterly Labour Force Survey

Quarter 3, 2012

Embargoed until:

**01 November 2012
10:00**

Enquiries:

User Information Services
Tel: (012) 310 8600/4892/8390

Forthcoming issue:

Quarter 4, 2012

Expected release date

February 2013

Contents

	Page
List of tables in highlights of the results	ii
List of figures in highlights of the results	ii
List of tables	iii
1. Introduction	v
2. Highlights of the results	v
3. Employment	vi
4. The unemployed population	xiiv
5. Characteristics of the not economically active population	xviii
6. Technical notes	xix
6.1. Response details	xix
6.2. Survey requirements and design	xix
6.3. Sample rotation	xix
6.4. Weighting	xx
6.5. Non-response adjustment	xx
6.6. Final survey weights	xx
6.7. Estimation	xx
6.8. Reliability of the survey estimates	xx
7. Definitions	xxi

List of tables in highlights of the results

	Page
Table A: Key labour market indicators.....	v
Table B: Employment by industry	vii
Table C: Employment by province.....	viii
Table D: Employment by occupation	xi
Table E: The unemployed by sex	xiv
Table F: Response rates by province	xix

List of figures in highlights of the results

Figure 1: Total employment, quarter 1:2008 to quarter 3:2012	vi
Figure 2: Quarter-to-quarter change in employment, quarter 1:2008 to quarter 3:2012.....	vi
Figure 3 : Year-on-year change in employment, quarter 1:2009 to quarter 3:2012.....	vii
Figure 4: Changes in the formal sector employment by industry.....	viii
Figure 5: Quarter-to-quarter changes in the formal sector employment.....	ix
Figure 6: Year-on-year changes in the formal sector employment.....	ixvii
Figure 7: Changes in the informal sector employment by industry.....	x
Figure 8: Quarter-to-quarter changes in the informal sector employment	xvii
Figure 9: Year-on-year changes in the informal sector employment	xvii
Figure 10: Employee access to selected leave benefits.....	xviii
Figure 11: Employee access to other benefits	xviii
Figure 12: Nature of employment contract or agreement quarter 1:2008 to quarter 3:2012	xvii
Figure 13: How employee's annual salary increment is negotiated.....	xvii
Figure 14: Total unemployment, quarter 1:2008 to quarter 3:2012	xviiiv
Figure 15: Unemployment rate by sex.....	xvii
Figure 16: NEET rate of youth aged 15-24 years by sex.....	xvii
Figure 17: Share of 15-24 year olds who are not in employment, education or training by sex	xvii
Figure 18: Share of the unemployed by education level.....	xvii
Figure 19: Unemployment rate by province.....	xvii
Figure 20: Unemployment rate by population group.....	xvii
Figure 21: The not economically active	xviii

List of tables

	Page
Table 1: Population of working age (15-64 years)	1
Table 2: Labour force characteristics by sex - All population groups	2
Table 2: Labour force characteristics by sex - All population groups (concluded)	3
Table 2.1: Labour force characteristics by population group	4
Table 2.1: Labour force characteristics by population group (concluded)	5
Table 2.2: Labour force characteristics by province	6
Table 2.2: Labour force characteristics by province (continued)	7
Table 2.2: Labour force characteristics by province (continued)	8
Table 2.2: Labour force characteristics by province (continued)	9
Table 2.2: Labour force characteristics by province (concluded)	10
Table 2.3: Labour force characteristics by province - Expanded definition of unemployment.....	11
Table 2.3: Labour force characteristics by province - Expanded definition of unemployment (continued)....	12
Table 2.3: Labour force characteristics by province - Expanded definition of unemployment (continued)....	13
Table 2.3: Labour force characteristics by province - Expanded definition of unemployment (concluded)...	14
Table 3.1: Employed by industry and sex - South Africa	15
Table 3.2: Employed by industry and province	16
Table 3.2: Employed by industry and province (continued)	17
Table 3.2: Employed by industry and province (continued)	18
Table 3.2: Employed by industry and province (concluded)	19
Table 3.3: Employed by sector and industry - South Africa	20
Table 3.4: Employed by province and sector	21
Table 3.4: Employed by province and sector (concluded)	22
Table 3.5: Employed by sex and occupation - South Africa.....	23
Table 3.6: Employed by sex and status in employment - South Africa	24
Table 3.7: Employed by sex and usual hours of work - South Africa	25
Table 3.8: Conditions of employment - South Africa	26
Table 3.8: Conditions of employment - South Africa (continued)	27
Table 3.8: Conditions of employment - South Africa (continued)	28
Table 3.8: Conditions of employment - South Africa (continued)	29
Table 3.8: Conditions of employment - South Africa (continued)	30
Table 3.8: Conditions of employment - South Africa (concluded)	31
Table 3.9: Time-related underemployment - South Africa.....	32
Table 4: Characteristics of the unemployed - South Africa	33
Table 4: Characteristics of the unemployed - South Africa (concluded)	34
Table 5: Characteristics of the not economically active - South Africa.....	35
Table 6: Socio-demographic characteristics - South Africa	36
Table 6: Socio-demographic characteristics - South Africa (continued)	37
Table 6: Socio-demographic characteristics - South Africa (continued)	38
Table 6: Socio-demographic characteristics - South Africa (concluded).....	39
Table 7: Profile of those not in employment, education or training - South Africa.....	40
Table 8: Involvement in non-market activities and labour market status by province	41
Table 8: Involvement in non-market activities and labour market status by province (continued)	42
Table 8: Involvement in non-market activities and labour market status by province (concluded)	43

Appendix 2A: Sampling variability for labour force characteristics by sex	44
Appendix 2A: Sampling variability for labour force characteristics by sex (concluded)	45
Appendix 2.1A: Sampling variability for labour force characteristics by population group	46
Appendix 2.1A: Sampling variability for labour force characteristics by population group (concluded)	47
Appendix 2.2A: Sampling variability for labour force characteristics by province	48
Appendix 2.2A: Sampling variability for labour force characteristics by province (continued)	49
Appendix 2.2A: Sampling variability for labour force characteristics by province (continued)	50
Appendix 2.2A: Sampling variability for labour force characteristics by province (continued)	51
Appendix 2.2A: Sampling variability for labour force characteristics by province (concluded)	52
Appendix 3.1A: Sampling variability for the employed by industry and sex	53
Appendix 3.4A: Sampling variability for the employed by province and sector	54
Appendix 3.4A: Sampling variability for the employed by province and sector (concluded)	55
Appendix 3.5A: Sampling variability for the employed by sex and occupation	56
Appendix 2B: Sampling variability for labour force characteristics by sex	57
Appendix 2B: Sampling variability for labour force characteristics by sex (concluded)	58
Appendix 2.1B: Sampling variability for labour force characteristics by population group	59
Appendix 2.1B: Sampling variability for labour force characteristics by population group (concluded)	60
Appendix 2.2B: Sampling variability for labour force characteristics by province	61
Appendix 2.2B: Sampling variability for labour force characteristics by province (continued)	62
Appendix 2.2B: Sampling variability for labour force characteristics by province (continued)	63
Appendix 2.2B: Sampling variability for labour force characteristics by province (continued)	64
Appendix 2.2B: Sampling variability for labour force characteristics by province (concluded)	65
Appendix 3.1B: Sampling variability for the employed by industry and sex	66
Appendix 3.4B: Sampling variability for the employed by province and sector	67
Appendix 3.4B: Sampling variability for the employed by province and sector (concluded)	68
Appendix 3.5B: Sampling variability for the employed by sex and occupation	69

1. Introduction

The Quarterly Labour Force Survey (QLFS) is a household-based sample survey conducted by Statistics South Africa (Stats SA). It collects data on the labour market activities of individuals aged 15 years and above who live in South Africa. However, this report only covers labour market activities of persons aged 15 to 64 years.

This report presents the key findings of the QLFS conducted from July to September 2012 (Q3:2012).

2. Highlights of the results

Table A: Key labour market indicators

	Jul-Sep 2011	Apr-Jun 2012	Jul-Sep 2012	Qtr-to- qtr change	Year-on- year change	Qtr-to- qtr change	Year-on- year change
	Thousand					Per cent	
Population 15–64 yrs	32 555	32 903	33 018	115	463	0,3	1,4
Labour force	17 761	17 916	18 313	397	552	2,2	3,1
Employed	13 318	13 447	13 645	198	327	1,5	2,5
Formal sector (non-agricultural)	9 436	9 571	9 663	92	227	1,0	2,4
Informal sector (non-agricultural)	2 160	2 085	2 197	112	37	5,4	1,7
Agriculture	624	638	661	23	37	3,6	5,9
Private households	1 098	1 153	1 124	-29	26	-2,5	2,4
Unemployed	4 442	4 470	4 667	197	225	4,4	5,1
Not economically active	14 795	14 987	14 705	-282	-90	-1,9	-0,6
Discouraged work-seekers	2 204	2 311	2 170	-141	-34	-6,1	-1,5
Other (not economically active)	12 591	12 675	12 535	-140	-56	-1,1	-0,4
Rates (%)							
Unemployment rate	25,0	24,9	25,5	0,6	0,5		
Employed/population ratio (absorption)	40,9	40,9	41,3	0,4	0,4		
Labour force participation rate	54,6	54,5	55,5	1,0	0,9		

Due to rounding, numbers do not necessarily add up to totals.

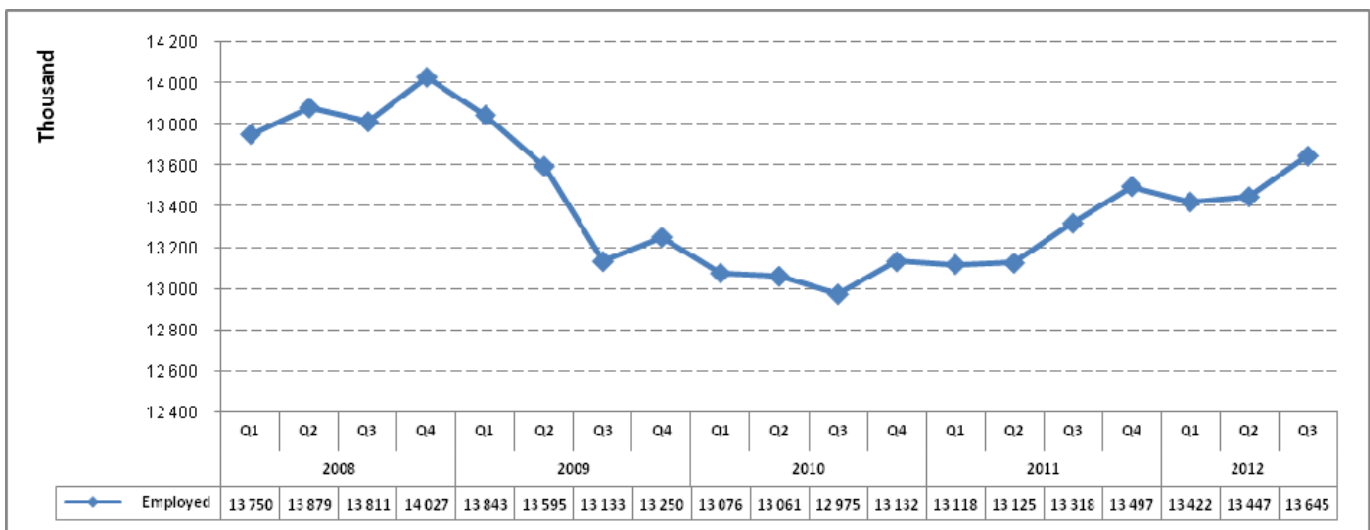
The labour force increased by 397 000 persons between Q2:2012 and Q3:2012. This increase was reflected in an increase in the number of both employed persons (198 000) and unemployed persons (197 000), which saw the unemployment rate increasing by 0,6 of a percentage point from 24,9% to 25,5% in Q3:2012. The Q3:2012 rise in employment translates into an increase of 670 000 in the number of employed persons since Q3:2010, although this level is still 382 000 below the peak in employment of 14 million reached in Q4:2008.

Driving the increase in employment was an increase in all sectors except Private households. Employment in the informal sector increased by 112 000, while formal sector jobs increased by 92 000 and Agriculture by 23 000 in Q3:2012. Employment in private households decreased by 29 000 (2,5 %) in Q3:2012. The number of discouraged work-seekers declined by 141 000 between Q2:2012 and Q3:2012, while other (not economically active) declined by 140 000.

Compared to a year ago, employment increased by 2,5% (327 000), unemployment increased by 5,1% (225 000), the number of discouraged work-seekers decreased by 1,5% (34 000) and other (not economically active) decreased by 0,4% (56 000) in Q3:2012, resulting in a net decrease of 90 000 among the not economically active population.

3. Employment

Figure 1: Total employment, quarter 1:2008 to quarter 3:2012



Since 2008 there has been a rise in employment during the fourth quarter of every year, followed by a decline in the subsequent quarter. Since Q3:2010, employment levels have steadily risen from about 13,0 million to 13,6 million in Q3:2012, increasing on a quarterly basis, with the exception of the first quarter in 2011 and 2012, a trend ascribed to seasonal factors. Between Q2:2012 and Q3:2012 employment increased by 198 000.

Figure 2: Quarter-to-quarter change in employment, quarter 1:2008 to quarter 3:2012

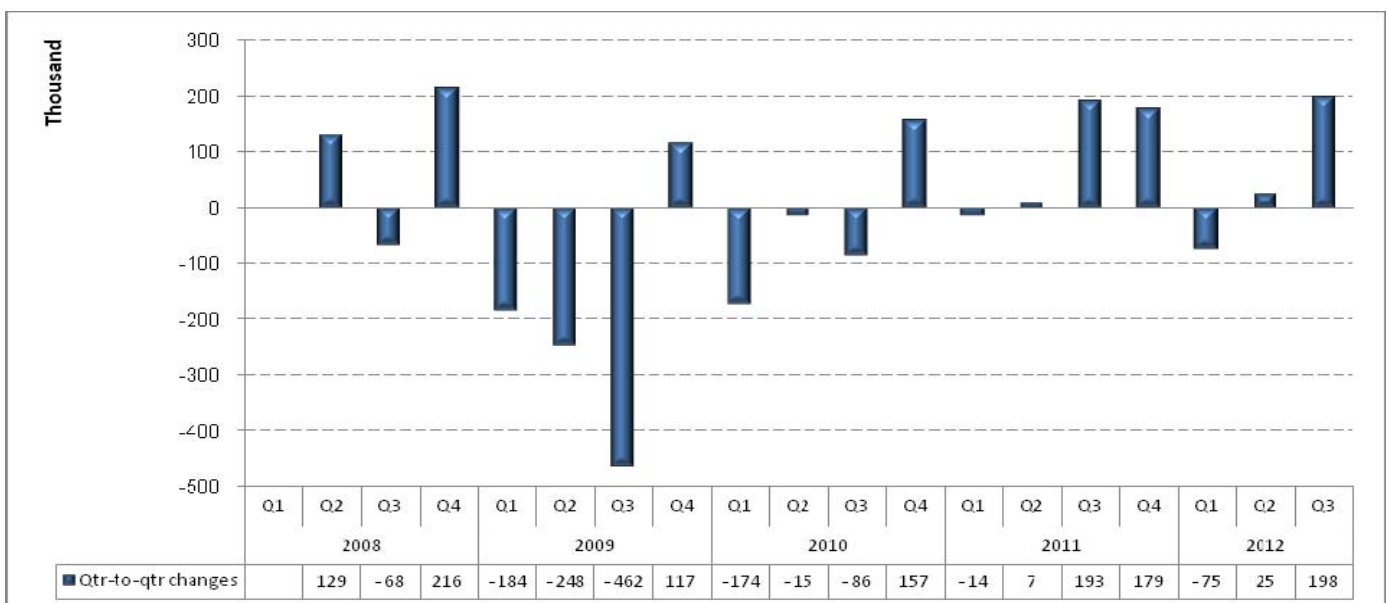
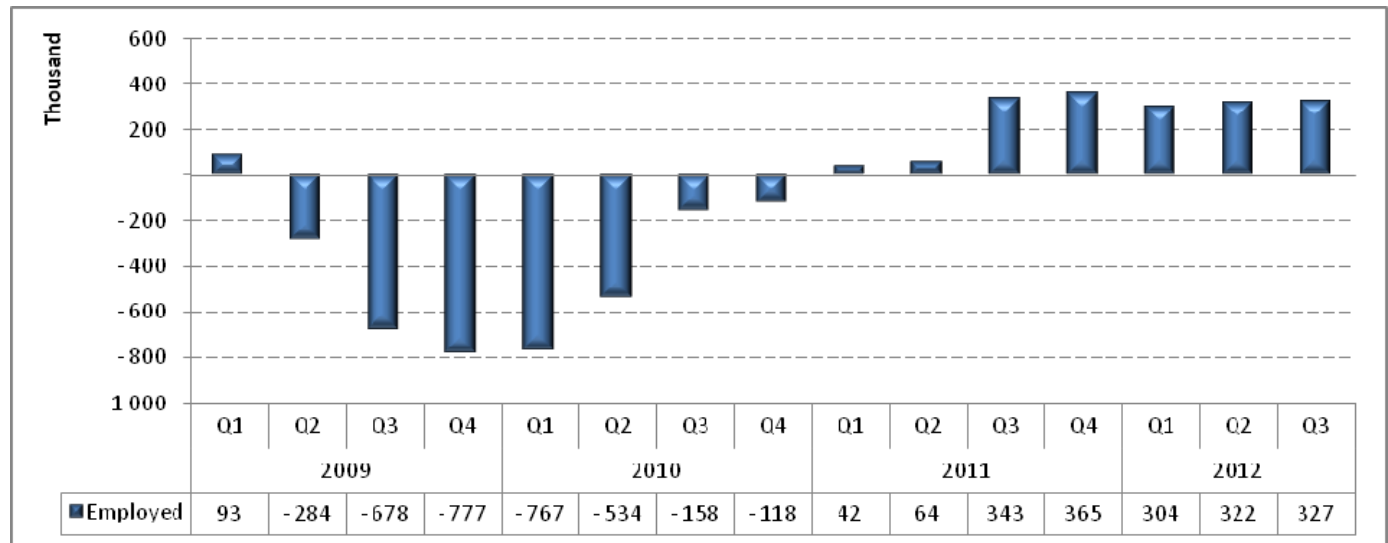


Figure 2 shows that after three successive quarters of increases in employment, employment declined by 75 000 in Q1:2012. Prior to this decline robust quarterly employment gains were realised. In Q2:2012 employment growth was observed, albeit at a slower pace with the number of employed persons increasing by 25 000 on a quarterly basis with employment growth also realised in Q3:2012 (198 000).

Figure 3: Year-on-year change in employment, quarter 1:2009 to quarter 3:2012



South Africa has experienced solid employment growth over the past year, with employment growing by 327 000 (or 2,5%), following growth of 322 000 (or 2,5%) in the year ended June 2012. Employment grew for seven consecutive quarters year-on-year since Q1:2011.

Table B: Employment by industry

	Jul-Sep 2011	Apr-Jun 2012	Jul-Sep 2012	Qtr-to- qtr change	Year-on- year change	Qtr-to- qtr change	Year-on- year change
Industry	Thousand					Per cent	
Total*	13 318	13 447	13 645	198	327	1,5	2,5
Agriculture	624	638	661	23	37	3,6	5,9
Mining [#]	324	357	349	-8	25	-2,2	7,7
Manufacturing	1 737	1 678	1 727	49	-10	2,9	-0,6
Utilities	73	98	105	7	32	7,1	43,8
Construction	1 086	1 012	1 046	34	-40	3,4	-3,7
Trade	3 012	2 966	2 962	-4	-50	-0,1	-1,7
Transport	756	791	834	43	78	5,4	10,3
Finance and other business services	1 768	1 737	1 811	74	43	4,3	2,4
Community and social services	2 836	3 012	3 025	13	189	0,4	6,7
Private households	1 098	1 153	1 124	-29	26	-2,5	2,4

Note: Total includes other industry.

[#]Mining is a very clustered industry, hence the industry might not have been adequately captured by the QLFS sample.

For more robust mining estimates, please use the Quarterly Employment Statistics (QES).

*Due to rounding, numbers do not necessarily add up to totals.

Table B indicates that between Q2:2012 and Q3:2012, the increase in total employment was mainly driven by an increase in the number of employed persons in the Finance and other business services (74 000), Manufacturing (49 000) and Transport (43 000) industries, while employment losses were observed in Private households (29 000), Mining (8 000) and Trade (4 000). Unlike in Q2:2012 when Agriculture experienced job losses, in Q3:2012 job gains (23 000) were observed in this industry. Community and social services reflected employment gains of 13 000 slowing from strong employment gains observed in Q2:2012.

Compared to the same period last year, employment increased by 327 000 jobs in Q3:2012, with Community and social services, Transport and Finance and other business services, contributing 189 000,

78 000 and 43 000 jobs respectively. Job losses were observed in Trade, Construction and Manufacturing industries, as employment declined by 50 000, 40 000 and 10 000 respectively in these industries between Q3:2011 and Q3:2012.

Table C: Employment by province

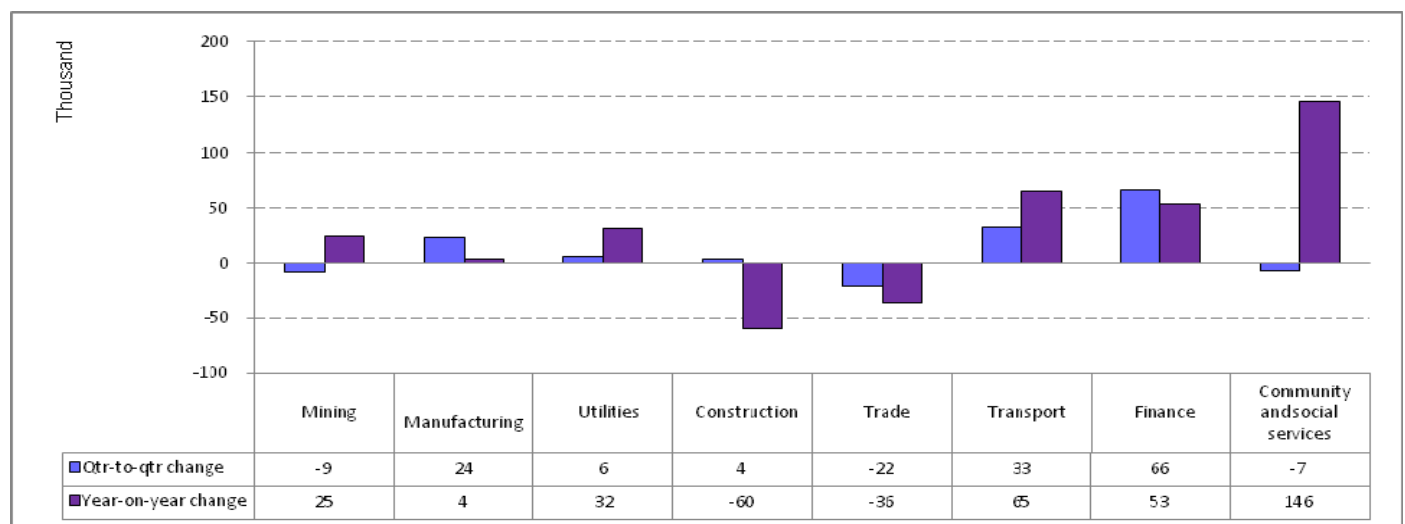
Province	Jul–Sep 2011	Apr–Jun 2012	Jul–Sep 2012	Qtr-to- qtr change	Year-on- year change	Qtr-to- qtr change	Year-on- year change
	Thousand				Per cent		
South Africa	13 318	13 447	13 645	198	327	1,5	2,5
Western Cape	1 806	1 815	1 806	-9	0	-0,5	0,0
Eastern Cape	1 298	1 298	1 330	32	32	2,5	2,5
Northern Cape	278	281	290	9	12	3,2	4,3
Free State	826	728	736	8	-90	1,1	-10,9
KwaZulu-Natal	2 510	2 520	2 533	13	23	0,5	0,9
North West	680	709	745	36	65	5,1	9,6
Gauteng	3 983	4 125	4 194	69	211	1,7	5,3
Mpumalanga	911	953	928	-25	17	-2,6	1,9
Limpopo	1 026	1 018	1 084	66	58	6,5	5,7

*Due to rounding, numbers do not necessarily add up to totals.

Table C shows that between Q2:2012 and Q3:2012, there were employment gains in seven of the nine provinces, with the highest increases observed in Gauteng (69 000), Limpopo (66 000) and North West (36 000). There were job losses in Mpumalanga (25 000) and Western Cape (9 000) over the same period.

For the year ended September 2012, employment increased in seven of the nine provinces, with Gauteng (211 000), North West (65 000) and Limpopo (58 000) being the biggest contributors, while employment declined in Free State (90 000) and remained unchanged in Western Cape.

Figure 4: Changes in the formal sector employment by industry

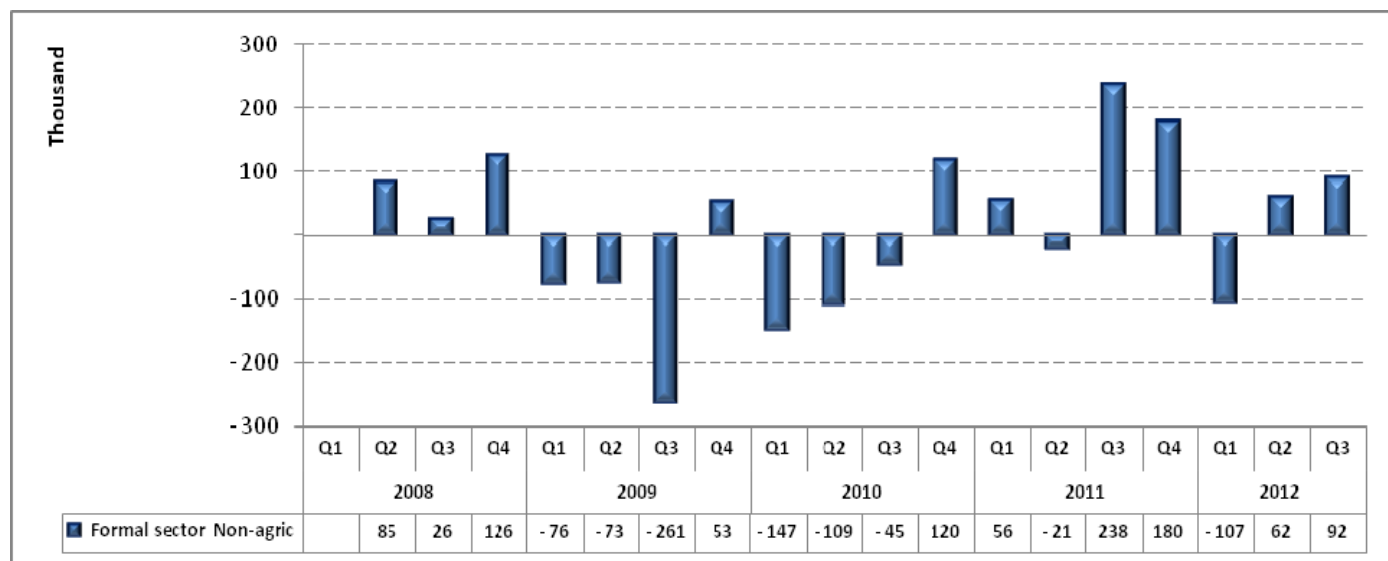


*Mining is a very clustered industry, hence the industry might not have been adequately captured by the QLFS sample. For more robust mining estimates please use the Quarterly Employment Statistics (QES)

In Q3:2012, formal sector employment accounted for 70,8% of total employment, a decrease of 0,4 of a percentage point from the previous quarter, as employment in the sector expanded by 92 000. Between Q2:2012 and Q3:2012 the majority of formal sector job gains were in the Finance and other business services (66 000), Transport (33 000) and Manufacturing (24 000) industries. Job losses were observed in Trade (22 000), Mining (9 000) and Community and social services (7 000) industries over the same period.

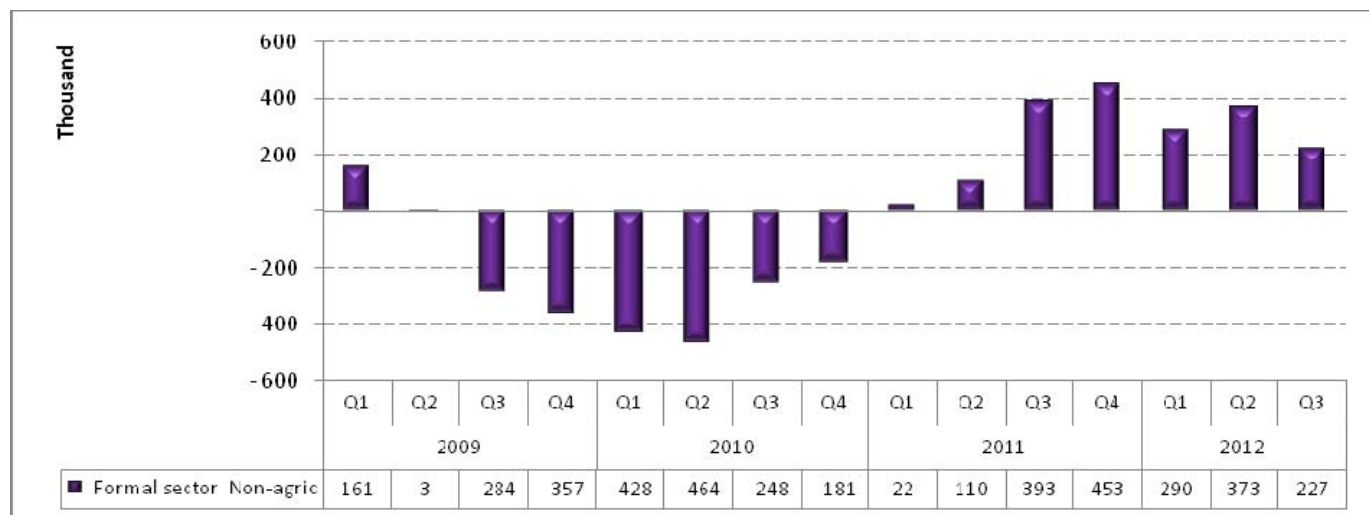
Compared to the same quarter last year, employment gains were mainly observed in Community and social services (146 000), Transport (65 000) and Finance and other business services (53 000) industries.

Figure 5: Quarter-to-quarter changes in the formal sector employment, 2008–2012



Following two consecutive quarters of employment gains, the formal sector shed 107 000 jobs in Q1:2012. The number of employed persons in the formal sector increased by 62 000 in Q2:2012 and continued to increase in Q3:2012 (up by 92 000). The pace of job creation in the sector has slowed down from strong gains observed in the second half of 2011.

Figure 6: Year-on-year changes in the formal sector employment



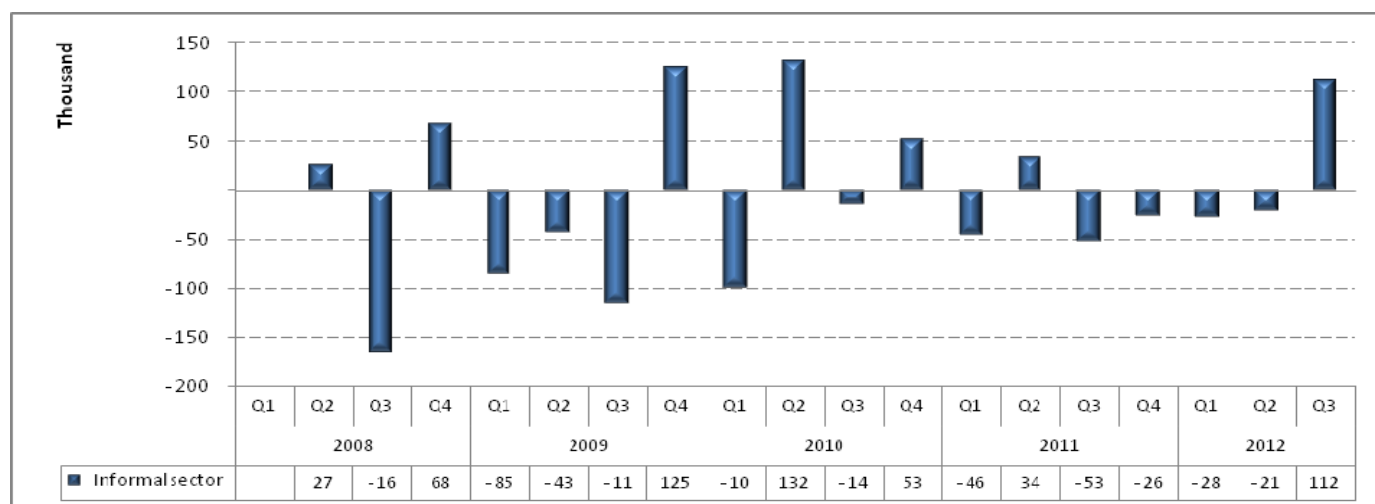
The annual change in the number of persons employed in the formal sector has been rising since Q1:2011. Compared to Q3:2011, 227 000 more people were employed in the formal sector in Q3:2012.

Figure 7: Changes in the informal sector employment by industry

#Mining is a very clustered industry, hence the industry might not have been adequately captured by the QLFS sample. For more robust mining estimates please use the Quarterly Employment Statistics (QES)

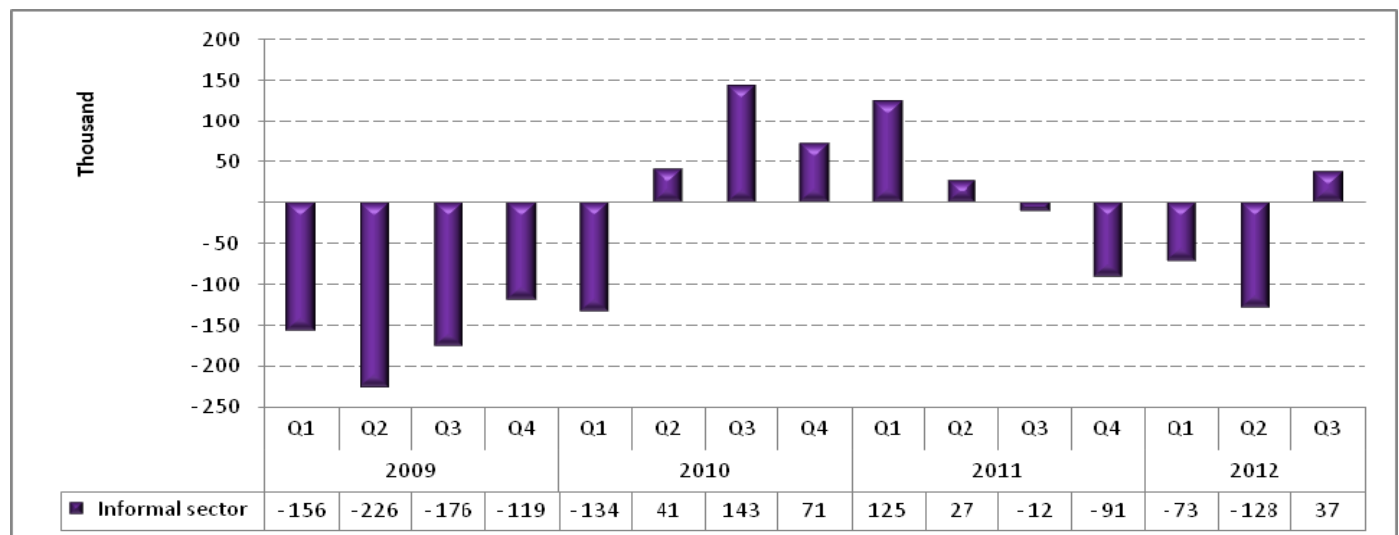
Informal sector employment increased by 112 000 jobs between Q2:2012 and Q3:2012. Figure 7 indicates that the majority of jobs in the sector were created in Construction (31 000), Manufacturing (25 000) and Community and social services (20 000).

Compared to Q3:2011, the number of persons employed in the informal sector increased by 37 000 in Q3:2012. Job gains were recorded in Community and social services (43 000), Construction (20 000) and Transport (14 000).

Figure 8: Quarter-to-quarter changes in the informal sector employment

Informal sector employment increased by 112 000 jobs between Q2:2012 and Q3:2012 following 4 successive quarterly declines in employment.

Figure 9: Year-on-year changes in the informal sector employment



Following five successive periods of year-on-year growth since Q2:2010, employment in the informal sector contracted for four successive quarters over the period Q3:2011 to Q2:2012. The informal sector created 37 000 jobs in Q3:2012.

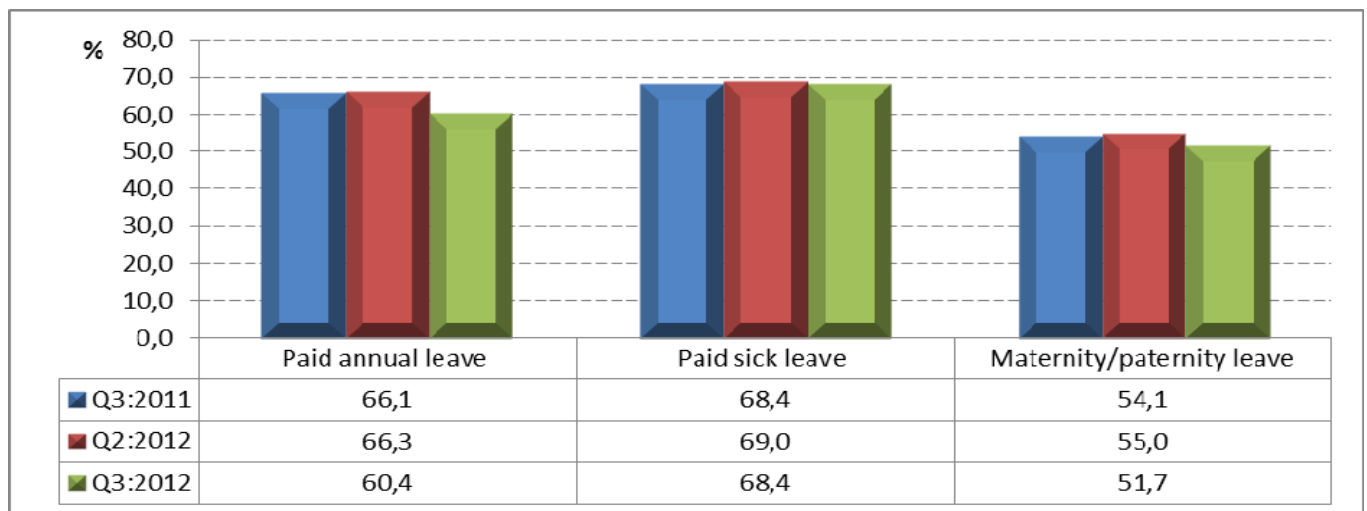
Table D: Employment by occupation

	Jul-Sep 2011	Apr-Jun 2012	Jul-Sep 2012	Qtr-to- qtr change	Year-on- year change	Qtr-to- qtr change	Year-on- year change
Occupation	Thousand					Per cent	
Total	13 318	13 447	13 645	198	327	1,5	2,5
Manager	1 130	1 062	1 135	73	5	6,9	0,4
Professional	763	816	798	-18	35	-2,2	4,6
Technician	1 440	1 577	1 523	-54	83	-3,4	5,8
Clerk	1 426	1 406	1 390	-16	-36	-1,1	-2,5
Sales and services	1 975	1 956	2 062	106	87	5,4	4,4
Skilled agriculture	61	67	67	0	6	0,0	9,8
Craft and related trade	1 655	1 581	1 662	81	7	5,1	0,4
Plant and machine operator	1 097	1 111	1 150	39	53	3,5	4,8
Elementary	2 894	2 957	2 982	25	88	0,8	3,0
Domestic worker	878	913	876	-37	-2	-4,1	-0,2

*Due to rounding, numbers do not necessarily add up to totals.

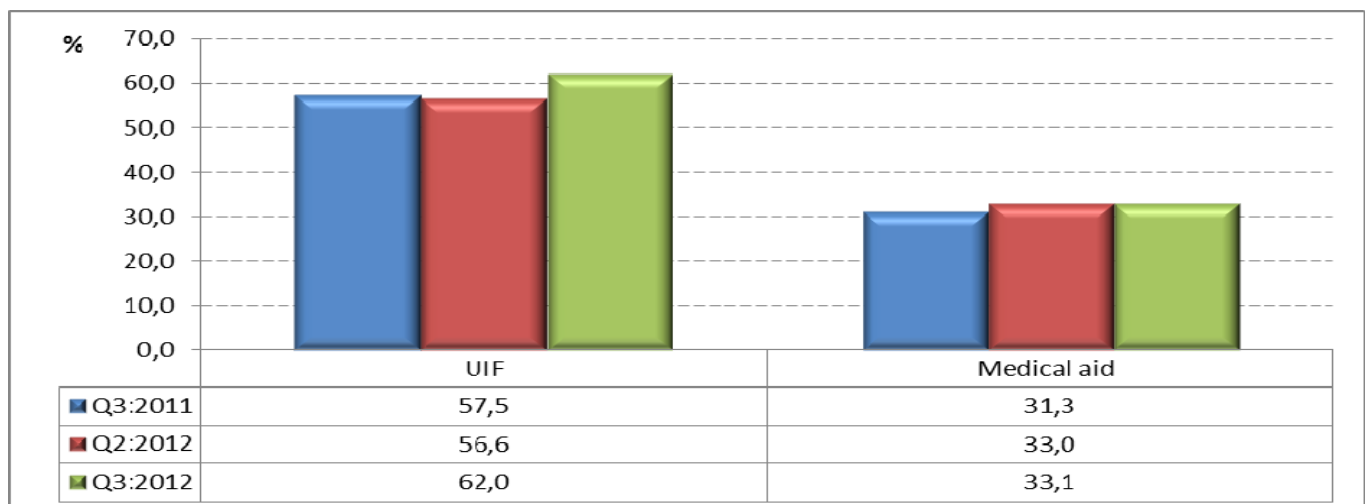
Elementary occupations account for 21,9% of total employment in Q3:2012. While accounting for the biggest share in total employment, the number of persons employed in Elementary occupations increased by 25 000 in Q3:2012 compared to Q2:2012. The biggest increase in employment was observed in Sales and services (106 000), followed Craft and related trade (81 000) and Managerial (73 000) occupations. In the same period, employment losses were observed in Technician (54 000), Domestic worker (37 000) and Professional (18 000) occupations.

Compared to a year ago, most jobs were created in Elementary (88 000), Sales and services (87 000) and Technician (83 000) occupations. There was a decline in the number of persons employed in Clerical (36 000) occupation.

Figure 10: Employee access to selected leave benefits

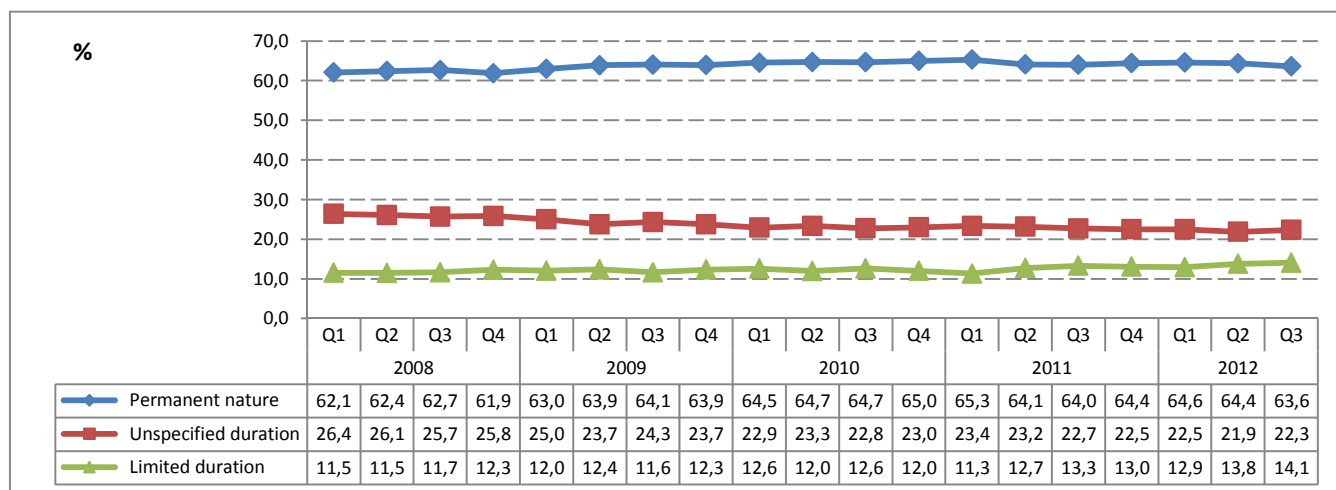
Between Q2:2012 and Q3:2012, the proportion of employees with access to paid annual leave and paid sick leave declined, while maternity leave benefit increased. Entitlement to paid sick leave benefit was the most available benefit offered by employers, with paid sick leave available to 68,4% of employees in Q3:2012, 0,6 of a percentage point decline from the previous quarter. The proportion of employees with paid annual (vacation) leave declined by 5,9 percentage points from 66,3% in Q2:2012 to 60,4% in Q3:2012; while the maternity/paternity leave benefit declined by 3,3 percentage points.

Compared to the same quarter in 2011, the proportion of employees with paid sick leave benefit remained unchanged at 68,4%. There was a 2,4 percentage points decline in the proportion of employees with maternity/paternity leave and a decrease of 5,7 percentage points for the paid annual leave benefit.

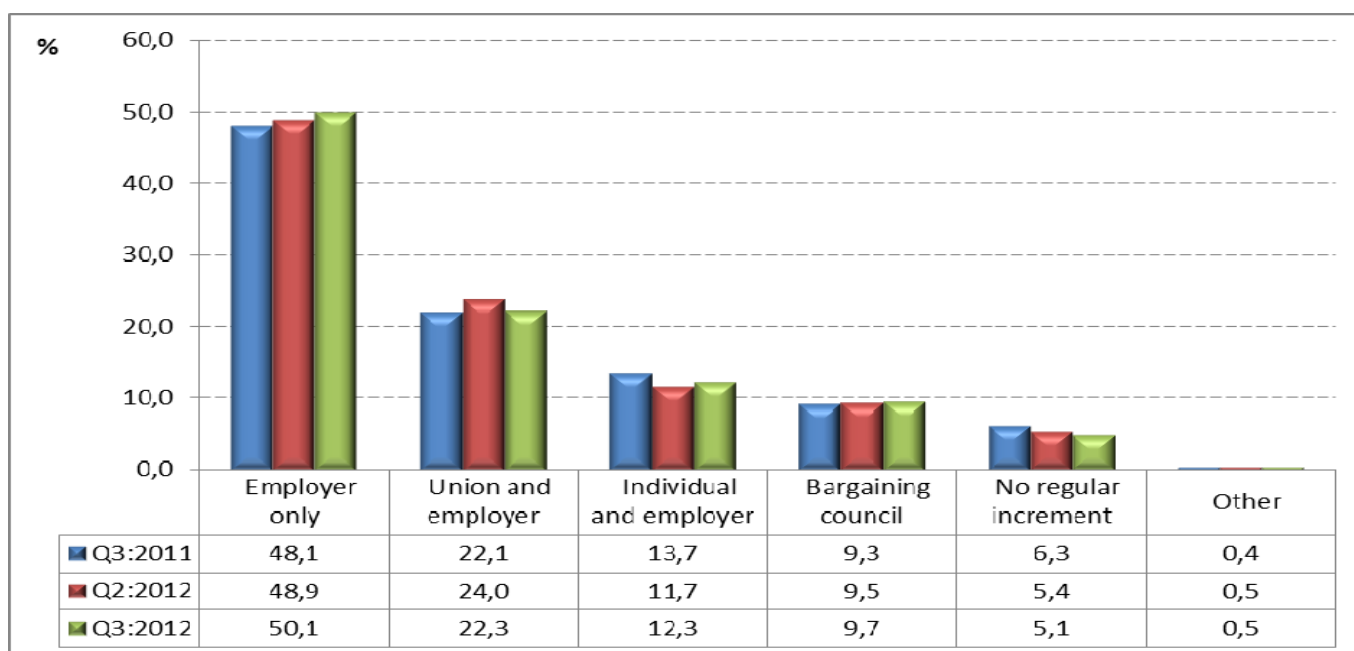
Figure 11: Employee access to other benefits

More than half of the employees indicated that their employers paid Unemployment Insurance Fund (UIF) contributions on their behalf, while about a third of employees were entitled to medical aid benefits from their employers. Between Q2:2012 and Q3:2012, there was an increase of 5,4 percentage points in the proportion of employees for whom their employers paid UIF, while medical aid benefit coverage remained virtually unchanged.

An annual comparison shows an improvement in the proportion of employees whose employers paid UIF benefit for them (up by 4,5 percentage points), while those with medical aid benefit increased by 1,8 percentage points.

Figure 12: Nature of employment contract or agreement , quarter 1:2008 to quarter 3:2012

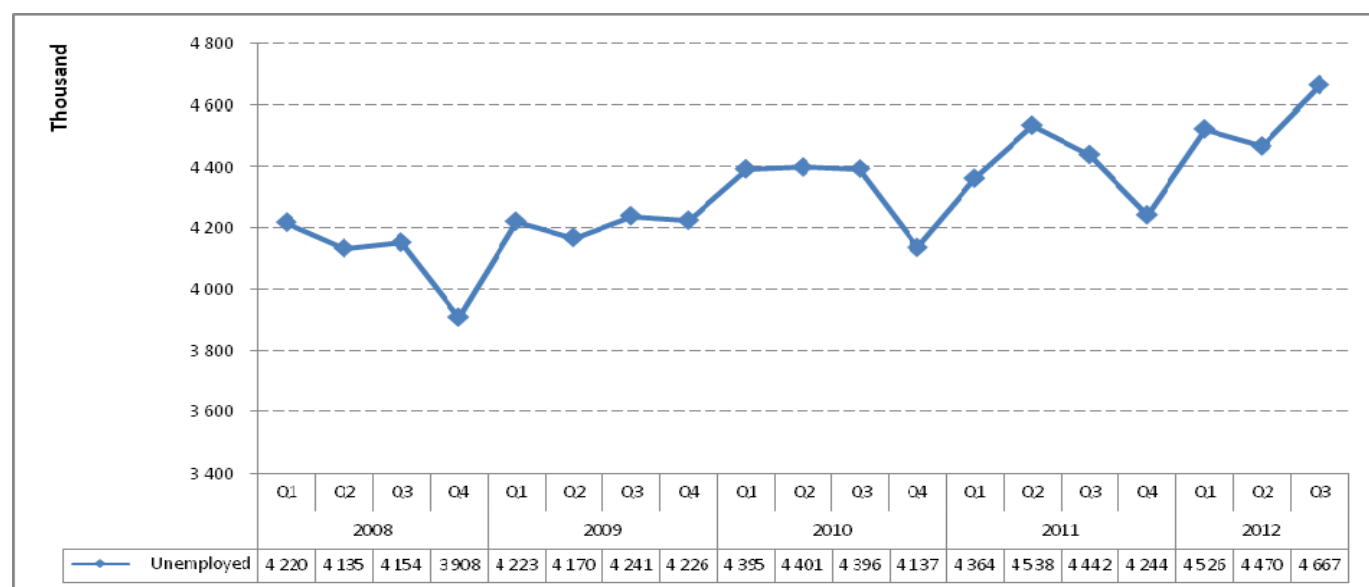
Since Q1:2008, more than 60,0% of the employees had a permanent employment contract/agreement with their employer, while more than 11,0% had a contract of a limited duration. Between Q1:2008 and Q3:2012, employees with a permanent employment contract/agreement with their employer had increased by 1,5 percentage points, while those with a limited duration contract increased by 2,6 percentage points.

Figure 13: How the employee's annual salary increment is negotiated

In Q3:2012; 50,1% of employees indicated that their annual salary increases were determined by the employer only, 22,3% by the union and the employer. While 9,7% of the employees reported that their annual salary increase is determined by the bargaining council or other sector bargaining arrangement and 5,1% of employees did not have regular annual increases.

4. The unemployed population

Figure 14: Total unemployment, quarter 1:2008 to quarter 3:2012



In Q4:2008, there were approximately 3,9 million persons unemployed in South Africa. During the financial and economic crisis, the level of unemployment climbed rapidly, reaching a peak of 4,4 million in Q2:2010, and remaining around this level in the following quarter. The number of unemployed persons rose to 4,5 million in Q1:2012, but declined by 56 000 persons between Q1:2012 and Q2:2012, while there was an increase of 197 000 between Q2:2012 and Q3:2012. The number of unemployed persons at 4,6 million in Q3:2012 is the highest level since the QLFS commenced in Q1:2008.

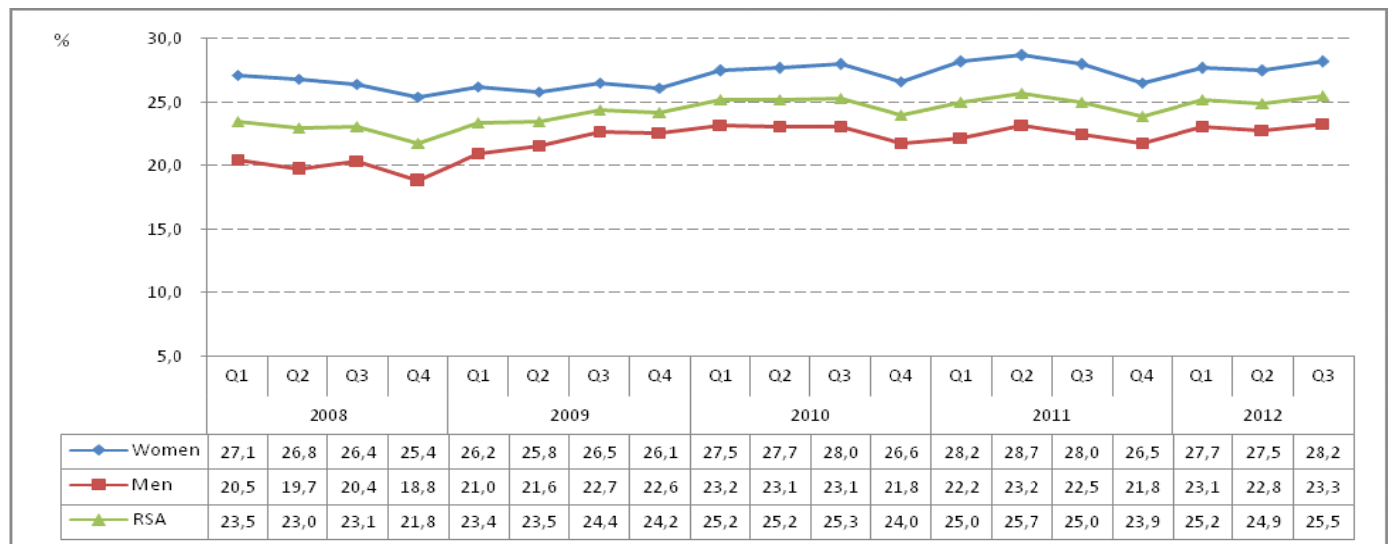
Table E: The unemployed by sex

	Jul-Sep 2011	Apr-Jun 2012	Jul-Sep 2012	Qtr-to- qtr change	Year-on- year change	Qtr-to- qtr change	Year-on- year change
Unemployed	Thousand					Per cent	
Total*	4 442	4 470	4 667	197	225	4,4	5,1
Women	2 257	2 227	2 331	104	74	4,7	3,3
Men	2 186	2 243	2 336	93	150	4,1	6,9

*Due to rounding, numbers do not necessarily add up to totals.

The number of unemployed persons increased by 197 000 (or 4,4%) between Q2:2012 and Q3:2012. This increase reflected a rise in both the number of unemployed women (104 000) and unemployed men (93 000). This increase had led an equalisation in the number of men and women who were unemployed in Q3:2012.

Year-on-year, the number of unemployed women increased by 74 000 (or 3,3%), while the number of unemployed men increased by 150 000 (or 6,9%).

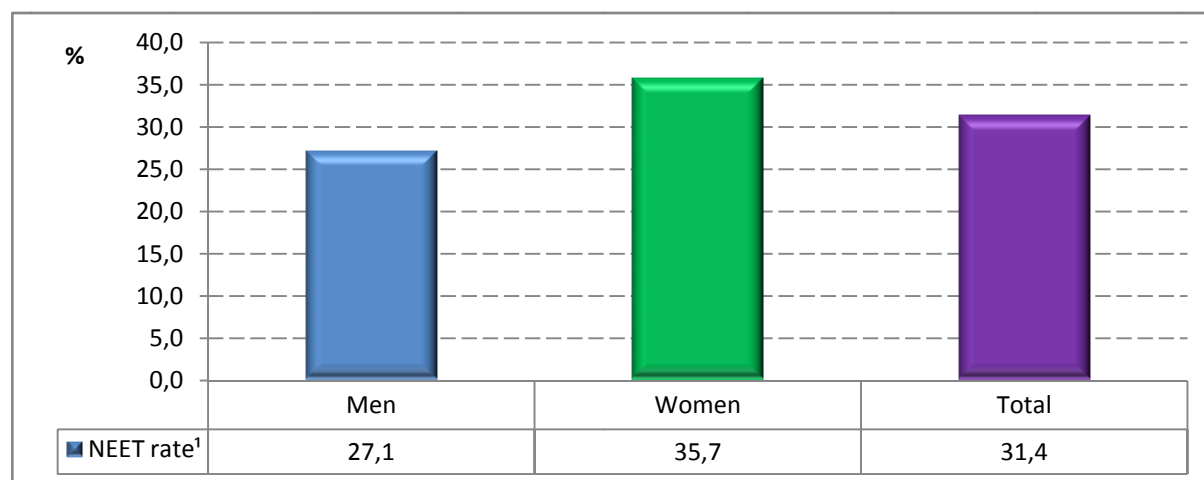
Figure 15: Unemployment rate by sex

The unemployment rate for women was 27,1% in Q1:2008, while the rate for men was 6,6 percentage points lower, and by Q1:2012 this gap had narrowed to 4,6 percentage points. Unemployment rate for women remained higher than the national average between Q1:2008 and Q2:2012. In Q3:2012 the unemployment rate for women was 2,7 percentage points higher than the national average. Q3:2012 saw an increase in the unemployment rate for both men and women compared to Q2:2012.

People who are not in employment, education or training (NEET)

Recently there has been increasing interest in the challenges faced by young people in the labour market. This interest resulted in a demand for more information on the dynamics of the youth not in employment, education or training (NEET). Consequently Stats SA decided to include questions in the QLFS questionnaire to enable the identification of the NEETs. Statistics on NEETs has been included in this report for the first time.

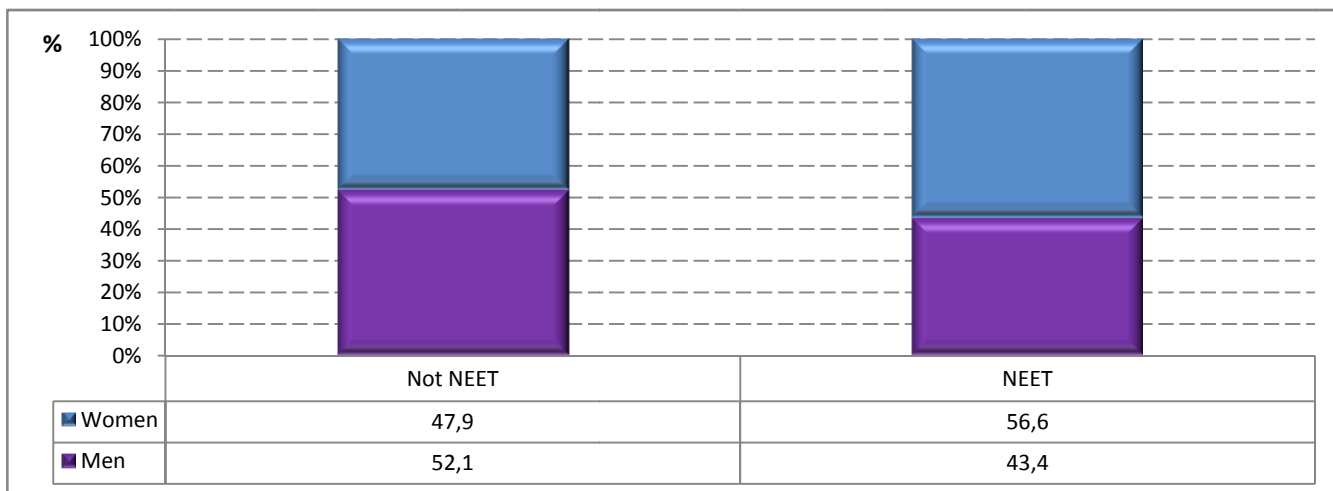
Approximately a third of the youth aged 15–24 years were not in employment, education or training in Q3:2012, which indicates the vulnerability of this group. The youth who are categorised as NEET are considered to be disengaged from both work and education. In Q3:2012, around 3,2 million youth were NEETs.

Figure 16: NEET rate of youth aged 15–24 years by sex

¹Note: NEET rate= (Number of unemployed youth +number of youth not in the labour force)-(number of unemployed youth and youth not in the labour force who are in education or training)/ Total number of youth

Figure 16 illustrates that, among the youth (15–24 years), NEET rate was higher among women (35,7%), than among men (27,1%).

Figure 17: Share of 15–24 year olds who are not in employment, education or training by sex



Women account for a bigger share of those aged 15–24 year who are NEET, - 56,6% were women (and 43,4% were men (Figure 17).

Figure 18: Share of the unemployed by education level



In general, lower unemployment rates are associated with higher levels of education. In Q1:2008, 64,1% of the unemployed did not have matric, while only 5,2% of the unemployed had tertiary qualifications. In Q3:2012, 61,0% of the unemployed did not have matric and only 5,9% had tertiary qualifications. The rise in unemployment has been driven by an increase in unemployment for those with educational levels lower than matric.

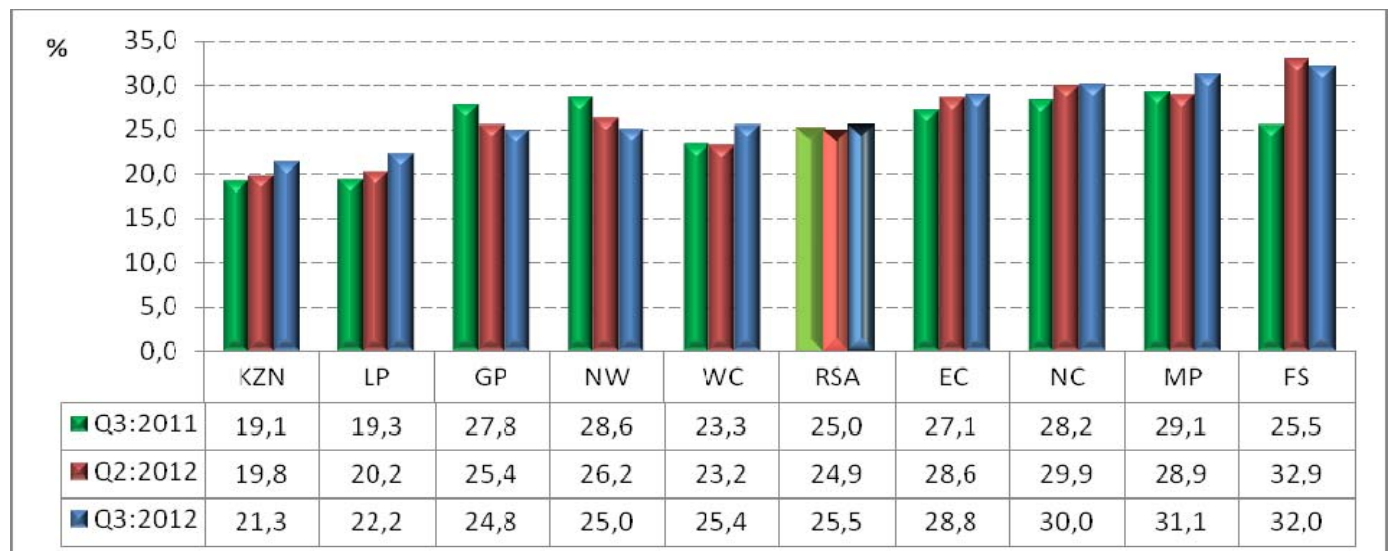
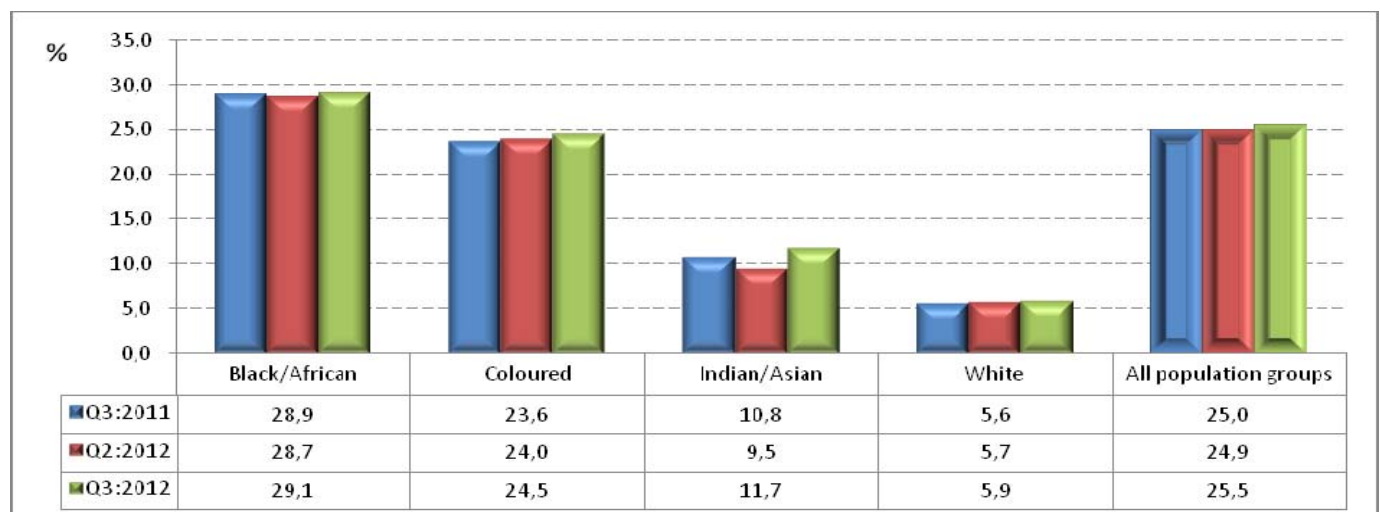
Figure 19: Unemployment rate by province

Figure 19 shows an increase in the unemployment rate in six of the nine provinces in Q3:2012 compared to Q2:2012. The biggest increase in the unemployment rate was observed in Mpumalanga (2,2 percentage points), Western Cape (2,2 percentage points) and Limpopo (2,0 percentage points). The highest decrease in unemployment rate was recorded in North West (1,2 percentage points).

In comparison to the same period last year, the unemployment rate increased by 0,5 of a percentage point at the national level. The biggest increases in the unemployment rate were observed in Free State (6,5 percentage points), Limpopo (2,9 percentage points) and KwaZulu-Natal (2,2 percentage points). The biggest decreases in unemployment rate were observed in North West (3,6 percentage points) and Gauteng (3,0 percentage points) in the same period.

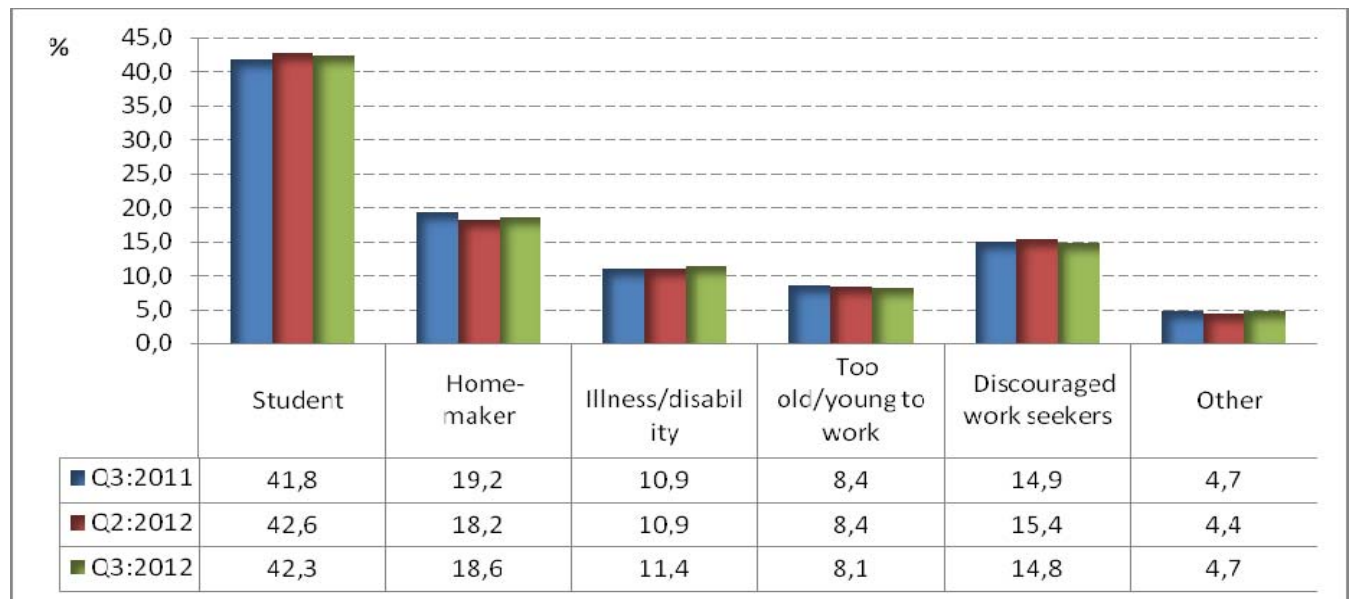
Figure 20: Unemployment rate by population group

Between Q2:2012 and Q3:2012, the unemployment rate increased among all population groups, with the biggest increase observed among the Indian/Asian population (up by 2,2 percentage points).

The year-on-year comparisons also show an increase in the unemployment rate among all population groups.

5. Characteristics of the not economically active population

Figure 21: The not economically active population



In Q3:2012, students (42,3%) accounted for the largest share of the not economically active population, followed by home-makers (18,6%), while discouraged work-seekers accounted for 14,8% of the not economically active (0,6 of a percentage point lower than in the previous quarter).

Compared to a year ago (Q3:2011), the share of students among the not economically active population increased by 0,5 of a percentage point; while the share of discouraged work-seekers remained virtually unchanged.

PJ Lehohla
Statistician-General: Statistics South Africa

6. Technical notes

6.1. Response details

Table F: Response rates by province

Province	Jul–Sep 2012
	Per cent
Western Cape	90,8
Eastern Cape	98,6
Northern Cape	91,3
Free State	96,9
KwaZulu-Natal	97,5
North West	92,8
Gauteng	80,5
Mpumalanga	94,2
Limpopo	98,4
South Africa	92,7

6.2. Survey requirements and design

The Quarterly Labour Force Survey (QLFS) frame has been developed as a general-purpose household survey frame that can be used by all other household surveys irrespective of the sample size requirement of the survey. The sample size for the QLFS is roughly 30 000 dwellings per quarter.

The sample is based on information collected during the 2001 Population Census conducted by Stats SA. In preparation for the 2001 Census, the country was divided into 80 787 enumeration areas (EAs). Stats SA's household-based surveys use a master sample of primary sampling units (PSUs) which comprise EAs that are drawn from across the country.

The sample is designed to be representative at provincial level and within provinces at metro/non-metro level. Within the metros, the sample is further distributed by geography type. The four geography types are: urban formal, urban informal, farms and tribal. This implies, for example, that within a metropolitan area the sample is representative at the different geography types that may exist within that metro.

The current sample size is 3 080 PSUs. It is divided equally into four subgroups or panels called rotation groups. The rotation groups are designed in such a way that each of these groups has the same distribution pattern as that which is observed in the whole sample. They are numbered from one to four and these numbers also correspond to the quarters of the year in which the sample will be rotated for the particular group.

The sample for the redesigned Labour Force Survey (i.e. the QLFS) is based on a stratified two-stage design with probability proportional to size (PPS) sampling of PSUs in the first stage, and sampling of dwelling units (DUs) with systematic sampling in the second stage.

6.3. Sample rotation

Each quarter, a $\frac{1}{4}$ of the sampled dwellings rotate out of the sample and are replaced by new dwellings from the same PSU or the next PSU on the list. Thus, sampled dwellings will remain in the sample for four consecutive quarters. It should be noted that the sampling unit is the dwelling, and the unit of observation is the household. Therefore, if a household moves out of a dwelling after being in the sample for, say two quarters, and a new household moves in, the new household will be enumerated for the next two quarters. If no household moves into the sampled dwelling, the dwelling will be classified as vacant (unoccupied).

6.4. Weighting

The sampling weights for the data collected from the sampled households are constructed in such a manner that the responses could be properly expanded to represent the entire civilian population of South Africa. The weights are the result of calculations involving several factors, including original selection probabilities, adjustment for non-response, and benchmarking to known population estimates from the Demographic division of Stats SA.

6.5. Non-response adjustment

In general, imputation is used for item non-response (i.e. blanks within the questionnaire) and edits failure (i.e. invalid or inconsistent responses). The eligible households in the sampled dwellings can be divided into two response categories: respondents and non-respondents; and weight adjustment is applied to account for the non-respondent households (e.g. refusal, no contact, etc.).

6.6. Final survey weights

The final survey weights are constructed using regression estimation to calibrate to the known population counts at the national level population estimates (which are supplied by the Demography division) cross-classified by 5-year age groups, gender and race, and provincial population estimates by broad age groups. The 5-year age groups are: 0–4, 5–9, 10–14, etc., and 65 years and above. The provincial level age groups are: 0–14, 15–34, 35–64, and 65 years and over. The calibrated weights are constructed such that all persons in a household would have the same final weight.

6.7. Estimation

The final survey weights are used to obtain the estimates for various domains of interest, e.g. number of persons employed in agriculture in Western Cape, number of females employed in manufacturing, etc.

6.8. Reliability of the survey estimates

Since estimates are based on sample data, they differ from figures that would have been obtained from complete enumeration of the population using the same instrument. Results are subject to both sampling and non-sampling errors. Non-sampling errors include biases from inaccurate reporting, processing, and tabulation, etc., as well as errors from non-response and incomplete reporting. These types of errors cannot be measured readily. However, to some extent, non-sampling errors can be minimised through the procedures used for data collection, editing, quality control, and non-response adjustment. The variances of the survey estimates are used to measure sampling errors. The variance estimation methodology is discussed below.

(i) Variance estimation

The most commonly used methods for estimating variances of survey estimates from complex surveys such as the QLFS, are the Taylor-series Linearization, Jackknife Replication, Balanced Repeated Replication (BRR), and Bootstrap methods (Wolter, 2007)¹. The Fay's BRR method has been used for variance estimation in the QLFS because of its simplicity.

(ii) Coefficient of variation

It is more useful in many situations to assess the size of the standard error relative to the magnitude of the characteristic being measured (the standard error is defined as the square root of the variance). The **coefficient of variation** ($_{cv}$) provides such a measure. It is the **ratio of the standard error of the survey estimate to the value of the estimate itself expressed as a percentage**. It is very useful in comparing the precision of several different survey estimates, where their sizes or scale differ from one another.

(iii) P-value of an estimate of change

The p-value corresponding to an estimate of change is the probability of observing a value larger than the particular observed value under the hypothesis that there is no real change. If p-value < 0,01, the difference is highly significant; if p-value is between 0,01 and 0,05, the difference is significant; and if p-value > 0,05, the difference is not significant.

¹Wolter KM, 2007. *Introduction to Variance Estimation*, 2nd Edition, New York: Springer-Verlag.

7. Definitions

Discouraged work-seeker is a person who was not employed during the reference period, wanted to work, was available to work/start a business but did not take active steps to find work during the last four weeks, provided that the main reason given for not seeking work was any of the following: no jobs available in the area; unable to find work requiring his/her skills; lost hope of finding any kind of work.

Economic activities are those that contribute to the production of goods and services in the country. There are two types of economic activities, namely: (1) Market production activities (work done for others and usually associated with pay or profit); and (2) Non-market production activities (work done for the benefit of the household, e.g. subsistence farming).

Employed persons are those aged 15–64 years who, during the reference week: did any work for at least one hour; or had a job or business but were not at work (temporarily absent).

Employment-to-population ratio (labour absorption rate) is the proportion of the working-age population that is employed.

Informal employment identifies persons who are in precarious employment situations irrespective of whether or not the entity for which they work is in the formal or informal sector. Persons in informal employment therefore consist of all persons in the informal sector; employees in the formal sector; and persons working in private households who are not entitled to basic benefits such as pension or medical aid contributions from their employer, and who do not have a written contract of employment.

Informal sector: The informal sector has the following two components:

- i) Employees working in establishments that employ less than five employees, who do not deduct income tax from their salaries/wages; and
- ii) Employers, own-account workers and persons helping unpaid in their household business who are not registered for either income tax or value-added tax.

The **labour force** comprises all persons who are employed plus all persons who are unemployed.

Labour force participation rate is the proportion of the working-age population that is either employed or unemployed.

Long-term unemployment: Persons in long-term unemployment are those individuals among the unemployed who were without work and trying to find a job or start a business for one year or more.

Not economically active: Persons aged 15–64 years who are neither employed nor unemployed in the reference week.

Persons in **underemployment (time-related)** are employed persons who were willing and available to work additional hours, whose total number of hours actually worked during the reference period was below 35 hours per week.

Underutilised labour comprises three groups as follows: persons who are underemployed, persons who are unemployed, and persons who are discouraged.

Unemployed persons according to the **official definition** are those (aged 15–64 years) who:

- a) Were not employed in the reference week **and**;
- b) Actively looked for work or tried to start a business in the four weeks preceding the survey interview **and**;
- c) Were available for work, i.e. would have been able to start work or a business in the reference week **or**;
- d) Had not actively looked for work in the past four weeks but had a job or business to start at a definite date in the future and were available.

Unemployed persons according to the **expanded definition** are those (aged 15–64 years) who:

- a) Were not employed in the reference week **and**;
- b) Were available for work, i.e. would have been able to start work or a business in the reference week.

The job search criterion is relaxed.

Unemployment rate is the proportion of the labour force that is unemployed.

The **working-age population** comprises all persons aged 15–64 years

Appendix 1

Table 1: Population of working age (15–64 years)									
	Jul–Sep 2011	Oct–Dec 2011	Jan–Mar 2012	Apr–Jun 2012	Jul–Sep 2012	Qrt-to-Qrt change	Year-on-year change	Qrt-to-Qrt change	Year-on- year change
	Thousand	Thousand	Thousand	Thousand	Thousand	Thousand	Thousand	Percent	Percent
Both sexes	32 555	32 670	32 786	32 903	33 018	115	463	0,3	1,4
Women	16 747	16 797	16 847	16 898	16 948	50	201	0,3	1,2
Men	15 808	15 873	15 939	16 005	16 070	65	262	0,4	1,7
Population groups	32 555	32 670	32 786	32 903	33 018	115	463	0,3	1,4
Black/African	25 496	25 608	25 720	25 833	25 944	111	448	0,4	1,8
Coloured	3 038	3 046	3 055	3 063	3 071	8	33	0,3	1,1
Indian/Asian	930	934	938	943	947	4	17	0,4	1,8
White	3 090	3 081	3 073	3 064	3 056	-8	-34	-0,3	-1,1
South Africa	32 555	32 670	32 786	32 903	33 018	115	463	0,3	1,4
Western Cape	3 444	3 457	3 470	3 484	3 497	13	53	0,4	1,5
Eastern Cape	4 179	4 191	4 203	4 215	4 225	10	46	0,2	1,1
Northern Cape	721	723	725	727	730	3	9	0,4	1,2
Free State	1 874	1 877	1 881	1 884	1 888	4	14	0,2	0,7
KwaZulu-Natal	6 776	6 802	6 828	6 855	6 881	26	105	0,4	1,5
North West	2 043	2 049	2 055	2 061	2 067	6	24	0,3	1,2
Gauteng	7 821	7 847	7 873	7 899	7 926	27	105	0,3	1,3
Mpumalanga	2 336	2 346	2 356	2 366	2 376	10	40	0,4	1,7
Limpopo	3 362	3 378	3 394	3 411	3 427	16	65	0,5	1,9

Due to rounding, numbers do not necessarily add up to totals.

Table 2: Labour force characteristics by sex - All population groups									
	Jul-Sep 2011	Oct-Dec 2011	Jan-Mar 2012	Apr-Jun 2012	Jul-Sep 2012	Qrt-to-Qrt change	Year-on-year change	Qrt-to-Qrt change	Year-on- year change
	Thousand	Thousand	Thousand	Thousand	Thousand	Thousand	Thousand	Percent	Percent
Both sexes									
Population 15–64 yrs	32 555	32 670	32 786	32 903	33 018	115	463	0,3	1,4
Labour Force	17 761	17 741	17 948	17 916	18 313	397	552	2,2	3,1
Employed	13 318	13 497	13 422	13 447	13 645	198	327	1,5	2,5
Formal sector (Non-agricultural)	9 436	9 616	9 509	9 571	9 663	92	227	1,0	2,4
Informal sector (Non-agricultural)	2 160	2 134	2 106	2 085	2 197	112	37	5,4	1,7
Agriculture	624	630	656	638	661	23	37	3,6	5,9
Private households	1 098	1 118	1 151	1 153	1 124	-29	26	-2,5	2,4
Unemployed	4 442	4 244	4 526	4 470	4 667	197	225	4,4	5,1
Not economically active	14 795	14 929	14 838	14 987	14 705	-282	-90	-1,9	-0,6
Discouraged work-seekers	2 204	2 315	2 335	2 311	2 170	-141	-34	-6,1	-1,5
Other(not economically active)	12 591	12 614	12 503	12 675	12 535	-140	-56	-1,1	-0,4
Rates (%)									
Unemployment rate	25,0	23,9	25,2	24,9	25,5	0,6	0,5		
Employed / population ratio (Absorption)	40,9	41,3	40,9	40,9	41,3	0,4	0,4		
Labour force participation rate	54,6	54,3	54,7	54,5	55,5	1,0	0,9		
Women									
Population 15–64 yrs	16 747	16 797	16 847	16 898	16 948	50	201	0,3	1,2
Labour Force	8 064	8 050	8 167	8 099	8 271	172	207	2,1	2,6
Employed	5 807	5 920	5 902	5 872	5 940	68	133	1,2	2,3
Formal sector (Non-agricultural)	3 852	3 982	3 944	3 941	3 971	30	119	0,8	3,1
Informal sector (Non-agricultural)	891	874	857	842	891	49	0	5,8	0,0
Agriculture	205	198	213	201	221	20	16	10,0	7,8
Private households	860	866	888	889	857	-32	-3	-3,6	-0,3
Unemployed	2 257	2 129	2 265	2 227	2 331	104	74	4,7	3,3
Not economically active	8 683	8 748	8 681	8 799	8 677	-122	-6	-1,4	-0,1
Discouraged work-seekers	1 240	1 281	1 281	1 325	1 213	-112	-27	-8,5	-2,2
Other(not economically active)	7 443	7 467	7 399	7 474	7 463	-11	20	-0,1	0,3
Rates (%)									
Unemployment rate	28,0	26,5	27,7	27,5	28,2	0,7	0,2		
Employed / population ratio (Absorption)	34,7	35,2	35,0	34,7	35,0	0,3	0,3		
Labour force participation rate	48,2	47,9	48,5	47,9	48,8	0,9	0,6		

Due to rounding, numbers do not necessarily add up to totals.

Note: Employment refers to market production activities.

Table 2: Labour force characteristics by sex - All population groups (concluded)#									
	Jul–Sep 2011	Oct–Dec 2011	Jan–Mar 2012	Apr–Jun 2012	Jul–Sep 2012	Qrt-to-Qrt change	Year-on-year change	Qrt-to-Qrt change	Year-on- year change
	Thousand	Thousand	Thousand	Thousand	Thousand	Thousand	Thousand	Percent	Percent
Men									
Population 15–64 yrs	15 808	15 873	15 939	16 005	16 070	65	262	0,4	1,7
Labour Force	9 697	9 692	9 781	9 817	10 042	225	345	2,3	3,6
Employed	7 511	7 577	7 520	7 574	7 706	132	195	1,7	2,6
Formal sector (Non-agricultural)	5 584	5 634	5 565	5 630	5 692	62	108	1,1	1,9
Informal sector (Non-agricultural)	1 269	1 260	1 249	1 243	1 306	63	37	5,1	2,9
Agriculture	419	432	443	438	440	2	21	0,5	5,0
Private households	239	251	263	264	268	4	29	1,5	12,1
Unemployed	2 186	2 115	2 261	2 243	2 336	93	150	4,1	6,9
Not economically active	6 111	6 181	6 158	6 187	6 028	-159	-83	-2,6	-1,4
Discouraged work-seekers	963	1 034	1 054	986	956	-30	-7	-3,0	-0,7
Other(not economically active)	5 148	5 147	5 104	5 201	5 072	-129	-76	-2,5	-1,5
Rates (%)									
Unemployment rate	22,5	21,8	23,1	22,8	23,3	0,5	0,8		
Employed / population ratio (Absorption)	47,5	47,7	47,2	47,3	48,0	0,7	0,5		
Labour force participation rate	61,3	61,1	61,4	61,3	62,5	1,2	1,2		

Due to rounding, numbers do not necessarily add up to totals.

Note: Employment refers to market production activities.

Table 2.1: Labour force characteristics by population group

	Jul–Sep 2011	Oct–Dec 2011	Jan–Mar 2012	Apr–Jun 2012	Jul–Sep 2012	Qrt-to-Qrt change	Year-on- year change	Qrt-to-Qrt change	Year-on- year change
	Thousand	Thousand	Thousand	Thousand	Thousand	Thousand	Thousand	Percent	Percent
South Africa									
Population 15–64 yrs	32 555	32 670	32 786	32 903	33 018	115	463	0,3	1,4
Labour Force	17 761	17 741	17 948	17 916	18 313	397	552	2,2	3,1
Employed	13 318	13 497	13 422	13 447	13 645	198	327	1,5	2,5
Unemployed	4 442	4 244	4 526	4 470	4 667	197	225	4,4	5,1
Not economically active	14 795	14 929	14 838	14 987	14 705	-282	-90	-1,9	-0,6
Rates (%)									
Unemployment rate	25,0	23,9	25,2	24,9	25,5	0,6	0,5		
Employed / population ratio (Absorption)	40,9	41,3	40,9	40,9	41,3	0,4	0,4		
Labour force participation rate	54,6	54,3	54,7	54,5	55,5	1,0	0,9		
Black African									
Population 15–64 yrs	25 496	25 608	25 720	25 833	25 944	111	448	0,4	1,8
Labour Force	13 165	13 171	13 350	13 383	13 714	331	549	2,5	4,2
Employed	9 361	9 519	9 470	9 544	9 719	175	358	1,8	3,8
Unemployed	3 804	3 651	3 879	3 839	3 995	156	191	4,1	5,0
Not economically active	12 331	12 437	12 370	12 449	12 230	-219	-101	-1,8	-0,8
Rates (%)									
Unemployment rate	28,9	27,7	29,1	28,7	29,1	0,4	0,2		
Employed / population ratio (Absorption)	36,7	37,2	36,8	36,9	37,5	0,6	0,8		
Labour force participation rate	51,6	51,4	51,9	51,8	52,9	1,1	1,3		
Coloured									
Population 15–64 yrs	3 038	3 046	3 055	3 063	3 071	8	33	0,3	1,1
Labour Force	1 957	1 926	1 955	1 936	1 979	43	22	2,2	1,1
Employed	1 495	1 520	1 488	1 473	1 494	21	-1	1,4	-0,1
Unemployed	463	406	468	464	485	21	22	4,5	4,8
Not economically active	1 081	1 121	1 099	1 127	1 092	-35	11	-3,1	1,0
Rates (%)									
Unemployment rate	23,6	21,1	23,9	24,0	24,5	0,5	0,9		
Employed / population ratio (Absorption)	49,2	49,9	48,7	48,1	48,6	0,5	-0,6		
Labour force participation rate	64,5	63,2	64,0	63,2	64,4	1,2	-0,1		

Due to rounding, numbers do not necessarily add up to totals.

Note: Employment refers to market production activities.

Table 2.1: Labour force characteristics by population group (concluded)#

	Jul–Sep 2011	Oct–Dec 2011	Jan–Mar 2012	Apr–Jun 2012	Jul–Sep 2012	Qrt-to-Qrt change	Year-on- year change	Qrt-to-Qrt change	Year-on- year change
	Thousand	Thousand	Thousand	Thousand	Thousand	Thousand	Thousand	Percent	Percent
Indian/Asian									
Population 15–64 yrs	930	934	938	943	947	4	17	0,4	1,8
Labour Force	528	533	551	529	556	27	28	5,1	5,3
Employed	471	487	500	479	491	12	20	2,5	4,2
Unemployed	57	45	51	50	65	15	8	30,0	14,0
Not economically active	402	402	388	413	391	-22	-11	-5,3	-2,7
Rates (%)									
Unemployment rate	10,8	8,5	9,3	9,5	11,7	2,2	0,9		
Employed / population ratio (Absorption)	50,6	52,1	53,3	50,8	51,8	1,0	1,2		
Labour force participation rate	56,8	57,0	58,7	56,1	58,7	2,6	1,9		
White									
Population 15–64 yrs	3 090	3 081	3 073	3 064	3 056	-8	-34	-0,3	-1,1
Labour Force	2 110	2 112	2 092	2 067	2 065	-2	-45	-0,1	-2,1
Employed	1 992	1 971	1 964	1 950	1 942	-8	-50	-0,4	-2,5
Unemployed	118	142	128	117	122	5	4	4,3	3,4
Not economically active	980	969	981	997	991	-6	11	-0,6	1,1
Rates (%)									
Unemployment rate	5,6	6,7	6,1	5,7	5,9	0,2	0,3		
Employed / population ratio (Absorption)	64,5	64,0	63,9	63,6	63,5	-0,1	-1,0		
Labour force participation rate	68,3	68,6	68,1	67,5	67,5	0,0	-0,8		

Due to rounding, numbers do not necessarily add up to totals.

Note: Employment refers to market production activities.

Table 2.2: Labour force characteristics by province

	Jul–Sep 2011	Oct–Dec 2011	Jan–Mar 2012	Apr–Jun 2012	Jul–Sep 2012	Qrt-to-Qrt change	Year-on- year change	Qrt-to-Qrt change	Year-on- year change
	Thousand	Thousand	Thousand	Thousand	Thousand	Thousand	Thousand	Percent	Percent
South Africa									
Population 15–64 yrs	32 555	32 670	32 786	32 903	33 018	115	463	0,3	1,4
Labour Force	17 761	17 741	17 948	17 916	18 313	397	552	2,2	3,1
Employed	13 318	13 497	13 422	13 447	13 645	198	327	1,5	2,5
Unemployed	4 442	4 244	4 526	4 470	4 667	197	225	4,4	5,1
Not economically active	14 795	14 929	14 838	14 987	14 705	-282	-90	-1,9	-0,6
Discouraged work-seekers	2 204	2 315	2 335	2 311	2 170	-141	-34	-6,1	-1,5
Other	12 591	12 614	12 503	12 675	12 535	-140	-56	-1,1	-0,4
Rates (%)									
Unemployment rate	25,0	23,9	25,2	24,9	25,5	0,6	0,5		
Employed / population ratio (Absorption)	40,9	41,3	40,9	40,9	41,3	0,4	0,4		
Labour force participation rate	54,6	54,3	54,7	54,5	55,5	1,0	0,9		
Western Cape									
Population 15–64 yrs	3 444	3 457	3 470	3 484	3 497	13	53	0,4	1,5
Labour Force	2 356	2 349	2 393	2 363	2 421	58	65	2,5	2,8
Employed	1 806	1 842	1 847	1 815	1 806	-9		-0,5	0,0
Unemployed	550	507	546	548	615	67	65	12,2	11,8
Not economically active	1 087	1 108	1 077	1 121	1 076	-45	-11	-4,0	-1,0
Discouraged work-seekers	30	46	28	31	29	-2	-1	-6,5	-3,3
Other	1 057	1 062	1 049	1 090	1 047	-43	-10	-3,9	-0,9
Rates (%)									
Unemployment rate	23,3	21,6	22,8	23,2	25,4	2,2	2,1		
Employed / population ratio (Absorption)	52,4	53,3	53,2	52,1	51,6	-0,5	-0,8		
Labour force participation rate	68,4	67,9	69,0	67,8	69,2	1,4	0,8		

Due to rounding, numbers do not necessarily add up to totals.

Note: Employment refers to market production activities.

Table 2.2: Labour force characteristics by province (continued)

	Jul–Sep 2011	Oct–Dec 2011	Jan–Mar 2012	Apr–Jun 2012	Jul–Sep 2012	Qrt-to-Qrt change	Year-on-year change	Qrt-to-Qrt change	Year-on- year change
	Thousand	Thousand	Thousand	Thousand	Thousand	Thousand	Thousand	Percent	Percent
Eastern Cape									
Population 15–64 yrs	4 179	4 191	4 203	4 215	4 225	10	46	0,2	1,1
Labour Force	1 781	1 821	1 783	1 819	1 870	51	89	2,8	5,0
Employed	1 298	1 326	1 279	1 298	1 330	32	32	2,5	2,5
Unemployed	483	494	504	521	539	18	56	3,5	11,6
Not economically active	2 399	2 370	2 420	2 396	2 356	-40	-43	-1,7	-1,8
Discouraged work-seekers	388	353	399	383	396	13	8	3,4	2,1
Other	2 011	2 018	2 020	2 012	1 959	-53	-52	-2,6	-2,6
Rates (%)									
Unemployment rate	27,1	27,1	28,3	28,6	28,8	0,2	1,7		
Employed / population ratio (Absorption)	31,1	31,6	30,4	30,8	31,5	0,7	0,4		
Labour force participation rate	42,6	43,4	42,4	43,2	44,2	1,0	1,6		
Northern Cape									
Population 15–64 yrs	721	723	725	727	730	3	9	0,4	1,2
Labour Force	387	397	382	401	414	13	27	3,2	7,0
Employed	278	291	286	281	290	9	12	3,2	4,3
Unemployed	109	106	95	120	124	4	15	3,3	13,8
Not economically active	334	326	343	327	315	-12	-19	-3,7	-5,7
Discouraged work-seekers	34	39	34	30	30		-4	0,0	-11,8
Other	300	287	310	296	285	-11	-15	-3,7	-5,0
Rates (%)									
Unemployment rate	28,2	26,7	24,9	29,9	30,0	0,1	1,8		
Employed / population ratio (Absorption)	38,6	40,2	39,4	38,7	39,7	1,0	1,1		
Labour force participation rate	53,7	54,9	52,6	55,2	56,7	1,5	3,0		

Due to rounding, numbers do not necessarily add up to totals.

Note: Employment refers to market production activities.

Table 2.2: Labour force characteristics by province (continued)#

	Jul–Sep 2011	Oct–Dec 2011	Jan–Mar 2012	Apr–Jun 2012	Jul–Sep 2012	Qrt-to-Qrt change	Year-on-year change	Qrt-to-Qrt change	Year-on- year change
	Thousand	Thousand	Thousand	Thousand	Thousand	Thousand	Thousand	Percent	Percent
Free State									
Population 15–64 yrs	1 874	1 877	1 881	1 884	1 888	4	14	0,2	0,7
Labour Force	1 109	1 067	1 087	1 085	1 081	-4	-28	-0,4	-2,5
Employed	826	753	737	728	736	8	-90	1,1	-10,9
Unemployed	283	314	350	357	346	-11	63	-3,1	22,3
Not economically active	765	810	794	799	806	7	41	0,9	5,4
Discouraged work-seekers	104	87	69	82	87	5	-17	6,1	-16,3
Other	660	723	725	717	719	2	59	0,3	8,9
Rates (%)									
Unemployment rate	25,5	29,4	32,2	32,9	32,0	-0,9	6,5		
Employed / population ratio (Absorption)	44,1	40,1	39,2	38,6	39,0	0,4	-5,1		
Labour force participation rate	59,2	56,8	57,8	57,6	57,3	-0,3	-1,9		
KwaZulu-Natal									
Population 15–64 yrs	6 776	6 802	6 828	6 855	6 881	26	105	0,4	1,5
Labour Force	3 103	3 176	3 168	3 143	3 218	75	115	2,4	3,7
Employed	2 510	2 562	2 519	2 520	2 533	13	23	0,5	0,9
Unemployed	593	614	649	623	685	62	92	10,0	15,5
Not economically active	3 672	3 626	3 660	3 712	3 663	-49	-9	-1,3	-0,2
Discouraged work-seekers	549	547	579	585	570	-15	21	-2,6	3,8
Other	3 124	3 079	3 081	3 127	3 092	-35	-32	-1,1	-1,0
Rates (%)									
Unemployment rate	19,1	19,3	20,5	19,8	21,3	1,5	2,2		
Employed / population ratio (Absorption)	37,0	37,7	36,9	36,8	36,8	0,0	-0,2		
Labour force participation rate	45,8	46,7	46,4	45,8	46,8	1,0	1,0		

Due to rounding, numbers do not necessarily add up to totals.

Note: Employment refers to market production activities.

Table 2.2: Labour force characteristics by province (continued)

	Jul–Sep 2011	Oct–Dec 2011	Jan–Mar 2012	Apr–Jun 2012	Jul–Sep 2012	Qrt-to-Qrt change	Year-on-year change	Qrt-to-Qrt change	Year-on- year change
	Thousand	Thousand	Thousand	Thousand	Thousand	Thousand	Thousand	Percent	Percent
North West									
Population 15–64 yrs	2 043	2 049	2 055	2 061	2 067	6	24	0,3	1,2
Labour Force	952	928	954	961	994	33	42	3,4	4,4
Employed	680	700	704	709	745	36	65	5,1	9,6
Unemployed	272	228	250	252	248	-4	-24	-1,6	-8,8
Not economically active	1 091	1 121	1 101	1 101	1 074	-27	-17	-2,5	-1,6
Discouraged work-seekers	241	262	251	257	197	-60	-44	-23,3	-18,3
Other	850	859	850	844	877	33	27	3,9	3,2
Rates (%)									
Unemployment rate	28,6	24,6	26,2	26,2	25,0	-1,2	-3,6		
Employed / population ratio (Absorption)	33,3	34,2	34,3	34,4	36,0	1,6	2,7		
Labour force participation rate	46,6	45,3	46,4	46,6	48,0	1,4	1,4		
Gauteng									
Population 15–64 yrs	7 821	7 847	7 873	7 899	7 926	27	105	0,3	1,3
Labour Force	5 517	5 493	5 596	5 527	5 576	49	59	0,9	1,1
Employed	3 983	4 115	4 140	4 125	4 194	69	211	1,7	5,3
Unemployed	1 533	1 379	1 456	1 402	1 382	-20	-151	-1,4	-9,8
Not economically active	2 305	2 354	2 277	2 372	2 351	-21	46	-0,9	2,0
Discouraged work-seekers	235	309	293	284	259	-25	24	-8,8	10,2
Other	2 069	2 045	1 984	2 088	2 092	4	23	0,2	1,1
Rates (%)									
Unemployment rate	27,8	25,1	26,0	25,4	24,8	-0,6	-3,0		
Employed / population ratio (Absorption)	50,9	52,4	52,6	52,2	52,9	0,7	2,0		
Labour force participation rate	70,5	70,0	71,1	70,0	70,4	0,4	-0,1		

Due to rounding, numbers do not necessarily add up to totals.

Note: Employment refers to market production activities.

Table 2.2: Labour force characteristics by province (concluded)#									
	Jul–Sep 2011	Oct–Dec 2011	Jan–Mar 2012	Apr–Jun 2012	Jul–Sep 2012	Qrt-to-Qrt change	Year-on-year change	Qrt-to-Qrt change	Year-on- year change
	Thousand	Thousand	Thousand	Thousand	Thousand	Thousand	Thousand	Percent	Percent
Mpumalanga									
Population 15–64 yrs	2 336	2 346	2 356	2 366	2 376	10	40	0,4	1,7
Labour Force	1 285	1 277	1 310	1 341	1 345	4	60	0,3	4,7
Employed	911	923	913	953	928	-25	17	-2,6	1,9
Unemployed	374	354	397	388	418	30	44	7,7	11,8
Not economically active	1 051	1 069	1 046	1 025	1 031	6	-20	0,6	-1,9
Discouraged work-seekers	213	232	257	229	243	14	30	6,1	14,1
Other	839	837	789	795	788	-7	-51	-0,9	-6,1
Rates (%)									
Unemployment rate	29,1	27,7	30,3	28,9	31,1	2,2	2,0		
Employed / population ratio (Absorption)	39,0	39,3	38,8	40,3	39,1	-1,2	0,1		
Labour force participation rate	55,0	54,4	55,6	56,7	56,6	-0,1	1,6		
Limpopo									
Population 15–64 yrs	3 362	3 378	3 394	3 411	3 427	16	65	0,5	1,9
Labour Force	1 271	1 234	1 275	1 276	1 394	118	123	9,2	9,7
Employed	1 026	985	996	1 018	1 084	66	58	6,5	5,7
Unemployed	246	249	279	258	310	52	64	20,2	26,0
Not economically active	2 090	2 144	2 119	2 134	2 033	-101	-57	-4,7	-2,7
Discouraged work-seekers	410	441	424	430	357	-73	-53	-17,0	-12,9
Other	1 681	1 703	1 695	1 705	1 676	-29	-5	-1,7	-0,3
Rates (%)									
Unemployment rate	19,3	20,2	21,9	20,2	22,2	2,0	2,9		
Employed / population ratio (Absorption)	30,5	29,2	29,3	29,8	31,6	1,8	1,1		
Labour force participation rate	37,8	36,5	37,6	37,4	40,7	3,3	2,9		

Due to rounding, numbers do not necessarily add up to totals.

Note: Employment refers to market production activities.

Table 2.3: Labour force characteristics by province - Expanded definition of unemployment

	Jul-Sep 2011	Oct-Dec 2011	Jan-Mar 2012	Apr-Jun 2012	Jul-Sep 2012	Qrt-to-Qrt change	Year-on-year change	Qrt-to-Qrt change	Year-on- year change
	Thousand	Thousand	Thousand	Thousand	Thousand	Thousand	Thousand	Percent	Percent
South Africa									
Population 15–64 yrs	32 555	32 670	32 786	32 903	33 018	115	463	0,3	1,4
Labour Force	20 822	20 893	21 167	21 070	21 412	342	590	1,6	2,8
Employed	13 318	13 497	13 422	13 447	13 645	198	327	1,5	2,5
Unemployed	7 504	7 396	7 745	7 623	7 767	144	263	1,9	3,5
Not economically active	11 733	11 777	11 619	11 833	11 606	-227	-127	-1,9	-1,1
Rates (%)									
Unemployment rate	36,0	35,4	36,6	36,2	36,3	0,1	0,3		
Employed / population ratio (Absorption)	40,9	41,3	40,9	40,9	41,3	0,4	0,4		
Labour force participation rate	64,0	64,0	64,6	64,0	64,8	0,8	0,8		
Western Cape									
Population 15–64 yrs	3 444	3 457	3 470	3 484	3 497	13	53	0,4	1,5
Labour Force	2 408	2 433	2 446	2 420	2 472	52	64	2,1	2,7
Employed	1 806	1 842	1 847	1 815	1 806	-9		-0,5	0,0
Unemployed	602	590	599	605	666	61	64	10,1	10,6
Not economically active	1 036	1 024	1 024	1 063	1 026	-37	-10	-3,5	-1,0
Rates (%)									
Unemployment rate	25,0	24,3	24,5	25,0	26,9	1,9	1,9		
Employed / population ratio (Absorption)	52,4	53,3	53,2	52,1	51,6	-0,5	-0,8		
Labour force participation rate	69,9	70,4	70,5	69,5	70,7	1,2	0,8		
Eastern Cape									
Population 15–64 yrs	4 179	4 191	4 203	4 215	4 225	10	46	0,2	1,1
Labour Force	2 234	2 243	2 245	2 255	2 333	78	99	3,5	4,4
Employed	1 298	1 326	1 279	1 298	1 330	32	32	2,5	2,5
Unemployed	936	917	967	957	1 002	45	66	4,7	7,1
Not economically active	1 945	1 947	1 958	1 960	1 893	-67	-52	-3,4	-2,7
Rates (%)									
Unemployment rate	41,9	40,9	43,1	42,4	43,0	0,6	1,1		
Employed / population ratio (Absorption)	31,1	31,6	30,4	30,8	31,5	0,7	0,4		
Labour force participation rate	53,5	53,5	53,4	53,5	55,2	1,7	1,7		

Due to rounding, numbers do not necessarily add up to totals.

Note: Employment refers to market production activities.

Table 2.3: Labour force characteristics by province - Expanded definition of unemployment (continued)#

	Jul-Sep 2011	Oct-Dec 2011	Jan-Mar 2012	Apr-Jun 2012	Jul-Sep 2012	Qrt-to-Qrt change	Year-on-year change	Qrt-to-Qrt change	Year-on- year change
	Thousand	Thousand	Thousand	Thousand	Thousand	Thousand	Thousand	Percent	Percent
Northern Cape									
Population 15–64 yrs	721	723	725	727	730	3	9	0,4	1,2
Labour Force	435	448	432	446	463	17	28	3,8	6,4
Employed	278	291	286	281	290	9	12	3,2	4,3
Unemployed	157	157	146	166	172	6	15	3,6	9,6
Not economically active	286	275	293	281	267	-14	-19	-5,0	-6,6
Rates (%)									
Unemployment rate	36,1	35,0	33,8	37,1	37,2	0,1	1,1		
Employed / population ratio (Absorption)	38,6	40,2	39,4	38,7	39,7	1,0	1,1		
Labour force participation rate	60,3	62,0	59,6	61,5	63,3	1,8	3,0		
Free State									
Population 15–64 yrs	1 874	1 877	1 881	1 884	1 888	4	14	0,2	0,7
Labour Force	1 253	1 197	1 207	1 206	1 220	14	-33	1,2	-2,6
Employed	826	753	737	728	736	8	-90	1,1	-10,9
Unemployed	426	444	470	478	484	6	58	1,3	13,6
Not economically active	621	680	674	678	668	-10	47	-1,5	7,6
Rates (%)									
Unemployment rate	34,0	37,1	38,9	39,6	39,7	0,1	5,7		
Employed / population ratio (Absorption)	44,1	40,1	39,2	38,6	39,0	0,4	-5,1		
Labour force participation rate	66,8	63,8	64,2	64,0	64,6	0,6	-2,2		
KwaZulu-Natal									
Population 15–64 yrs	6 776	6 802	6 828	6 855	6 881	26	105	0,4	1,5
Labour Force	4 022	4 038	4 152	4 097	4 186	89	164	2,2	4,1
Employed	2 510	2 562	2 519	2 520	2 533	13	23	0,5	0,9
Unemployed	1 512	1 476	1 633	1 577	1 652	75	140	4,8	9,3
Not economically active	2 754	2 764	2 676	2 758	2 695	-63	-59	-2,3	-2,1
Rates (%)									
Unemployment rate	37,6	36,6	39,3	38,5	39,5	1,0	1,9		
Employed / population ratio (Absorption)	37,0	37,7	36,9	36,8	36,8	0,0	-0,2		
Labour force participation rate	59,4	59,4	60,8	59,8	60,8	1,0	1,4		

Due to rounding, numbers do not necessarily add up to totals.

Note: Employment refers to market production activities.

Table 2.3: Labour force characteristics by province - Expanded definition of unemployment (continued)

	Jul–Sep 2011	Oct–Dec 2011	Jan–Mar 2012	Apr–Jun 2012	Jul–Sep 2012	Qrt-to-Qrt change	Year-on- year change	Qrt-to-Qrt change	Year-on- year change
	Thousand	Thousand	Thousand	Thousand	Thousand	Thousand	Thousand	Percent	Percent
North West									
Population 15–64 yrs	2 043	2 049	2 055	2 061	2 067	6	24	0,3	1,2
Labour Force	1 264	1 272	1 292	1 292	1 273	-19	9	-1,5	0,7
Employed	680	700	704	709	745	36	65	5,1	9,6
Unemployed	584	572	587	583	528	-55	-56	-9,4	-9,6
Not economically active	779	777	763	769	794	25	15	3,3	1,9
Rates (%)									
Unemployment rate	46,2	45,0	45,5	45,1	41,5	-3,6	-4,7		
Employed / population ratio (Absorption)	33,3	34,2	34,3	34,4	36,0	1,6	2,7		
Labour force participation rate	61,9	62,1	62,8	62,7	61,6	-1,1	-0,3		
Gauteng									
Population 15–64 yrs	7 821	7 847	7 873	7 899	7 926	27	105	0,3	1,3
Labour Force	5 827	5 867	5 942	5 879	5 920	41	93	0,7	1,6
Employed	3 983	4 115	4 140	4 125	4 194	69	211	1,7	5,3
Unemployed	1 844	1 752	1 802	1 754	1 726	-28	-118	-1,6	-6,4
Not economically active	1 994	1 980	1 931	2 021	2 007	-14	13	-0,7	0,7
Rates (%)									
Unemployment rate	31,6	29,9	30,3	29,8	29,2	-0,6	-2,4		
Employed / population ratio (Absorption)	50,9	52,4	52,6	52,2	52,9	0,7	2,0		
Labour force participation rate	74,5	74,8	75,5	74,4	74,7	0,3	0,2		
Mpumalanga									
Population 15–64 yrs	2 336	2 346	2 356	2 366	2 376	10	40	0,4	1,7
Labour Force	1 591	1 614	1 665	1 667	1 701	34	110	2,0	6,9
Employed	911	923	913	953	928	-25	17	-2,6	1,9
Unemployed	680	691	752	714	773	59	93	8,3	13,7
Not economically active	745	732	691	699	675	-24	-70	-3,4	-9,4
Rates (%)									
Unemployment rate	42,7	42,8	45,2	42,8	45,4	2,6	2,7		
Employed / population ratio (Absorption)	39,0	39,3	38,8	40,3	39,1	-1,2	0,1		
Labour force participation rate	68,1	68,8	70,7	70,5	71,6	1,1	3,5		

Due to rounding, numbers do not necessarily add up to totals.

Note: Employment refers to market production activities.

Table 2.3: Labour force characteristics by province - Expanded definition of unemployment (concluded)#									
	Jul-Sep 2011	Oct-Dec 2011	Jan-Mar 2012	Apr-Jun 2012	Jul-Sep 2012	Qrt-to-Qrt change	Year-on- year change	Qrt-to-Qrt change	Year-on- year change
	Thousand	Thousand	Thousand	Thousand	Thousand	Thousand	Thousand	Percent	Percent
Limpopo									
Population 15–64 yrs	3 362	3 378	3 394	3 411	3 427	16	65	0,5	1,9
Labour Force	1 789	1 781	1 786	1 807	1 846	39	57	2,2	3,2
Employed	1 026	985	996	1 018	1 084	66	58	6,5	5,7
Unemployed	763	796	790	789	762	-27	-1	-3,4	-0,1
Not economically active	1 573	1 597	1 608	1 603	1 581	-22	8	-1,4	0,5
Rates (%)									
Unemployment rate	42,6	44,7	44,2	43,7	41,3	-2,4	-1,3		
Employed / population ratio (Absorption)	30,5	29,2	29,3	29,8	31,6	1,8	1,1		
Labour force participation rate	53,2	52,7	52,6	53,0	53,9	0,9	0,7		

Due to rounding, numbers do not necessarily add up to totals.

Note: Employment refers to market production activities.

Table 3.1: Employed by industry and sex - South Africa

	Jul-Sep 2011	Oct-Dec 2011	Jan-Mar 2012	Apr-Jun 2012	Jul-Sep 2012	Qrt-to-Qrt change	Year-on-year change	Qrt-to-Qrt change	Year-on-year change
	Thousand	Thousand	Thousand	Thousand	Thousand	Thousand	Thousand	Thousand	Thousand
Both sexes	13 318	13 497	13 422	13 447	13 645	198	327	1,5	2,5
Agriculture	624	630	656	638	661	23	37	3,6	5,9
Mining	324	327	336	357	349	-8	25	-2,2	7,7
Manufacturing	1 737	1 789	1 722	1 678	1 727	49	-10	2,9	-0,6
Utilities	73	81	91	98	105	7	32	7,1	43,8
Construction	1 086	1 057	986	1 012	1 046	34	-40	3,4	-3,7
Trade	3 012	3 060	3 057	2 966	2 962	-4	-50	-0,1	-1,7
Transport	756	788	783	791	834	43	78	5,4	10,3
Finance	1 768	1 739	1 741	1 737	1 811	74	43	4,3	2,4
Community and social services	2 836	2 902	2 891	3 012	3 025	13	189	0,4	6,7
Private households	1 098	1 118	1 151	1 153	1 124	-29	26	-2,5	2,4
Other	4	6	7	5	1	-4	-3	-80,0	-75,0
Women	5 807	5 920	5 902	5 872	5 940	68	133	1,2	2,3
Agriculture	205	198	213	201	221	20	16	10,0	7,8
Mining	31	34	43	52	47	-5	16	-9,6	51,6
Manufacturing	580	581	557	516	561	45	-19	8,7	-3,3
Utilities	13	14	14	19	27	8	14	42,1	107,7
Construction	112	118	107	120	127	7	15	5,8	13,4
Trade	1 414	1 469	1 452	1 391	1 398	7	-16	0,5	-1,1
Transport	140	167	162	155	165	10	25	6,5	17,9
Finance	781	743	748	744	739	-5	-42	-0,7	-5,4
Community and social services	1 672	1 729	1 715	1 785	1 798	13	126	0,7	7,5
Private households	860	866	888	889	857	-32	-3	-3,6	-0,3
Other	1	2	3	2	0	-2	-1	-100,0	-100,0
Men	7 511	7 577	7 520	7 574	7 706	132	195	1,7	2,6
Agriculture	419	432	443	438	440	2	21	0,5	5,0
Mining	292	294	293	306	302	-4	10	-1,3	3,4
Manufacturing	1 156	1 208	1 165	1 162	1 166	4	10	0,3	0,9
Utilities	60	67	77	80	78	-2	18	-2,5	30,0
Construction	975	939	880	892	919	27	-56	3,0	-5,7
Trade	1 599	1 592	1 606	1 574	1 564	-10	-35	-0,6	-2,2
Transport	616	621	621	636	669	33	53	5,2	8,6
Finance	987	996	993	993	1 072	79	85	8,0	8,6
Community and social services	1 164	1 173	1 176	1 227	1 227	0	63	0,0	5,4
Private households	239	251	263	264	268	4	29	1,5	12,1
Other	3	5	4	3	0	-3	-3	-100,0	-100,0

Table 3.2: Employed by industry and province

	Jul-Sep 2011	Oct-Dec 2011	Jan-Mar 2012	Apr-Jun 2012	Jul-Sep 2012	Qrt-to-Qrt change	Year-on- year change	Qrt-to-Qrt change	Year-on- year change
	Thousand	Thousand	Thousand	Thousand	Thousand	Thousand	Thousand	Thousand	Thousand
Agriculture	624	630	656	638	661	23	37	3,6	5,9
Western Cape	113	94	127	102	123	21	10	20,6	8,8
Eastern Cape	67	64	47	60	60	0	-7	0,0	-10,4
Northern Cape	47	55	47	43	45	2	-2	4,7	-4,3
Free State	68	62	72	56	68	12	0	21,4	0,0
KwaZulu-Natal	97	95	91	91	89	-2	-8	-2,2	-8,2
North West	31	30	38	34	31	-3	0	-8,8	0,0
Gauteng	39	64	62	69	49	-20	10	-29,0	25,6
Mpumalanga	75	75	83	85	87	2	12	2,4	16,0
Limpopo	87	90	88	99	109	10	22	10,1	25,3
Mining	324	327	336	357	349	-8	25	-2,2	7,7
Western Cape	6	4	3	4	2	-2	-4	-50,0	-66,7
Eastern Cape	1			3	1	-2	0	-66,7	0,0
Northern Cape	10	13	16	19	17	-2	7	-10,5	70,0
Free State	21	27	28	26	27	1	6	3,8	28,6
KwaZulu-Natal	16	13	18	19	18	-1	2	-5,3	12,5
North West	114	110	109	120	115	-5	1	-4,2	0,9
Gauteng	25	30	28	32	30	-2	5	-6,3	20,0
Mpumalanga	72	69	64	67	60	-7	-12	-10,4	-16,7
Limpopo	58	61	70	68	78	10	20	14,7	34,5
Manufacturing	1 737	1 789	1 722	1 678	1 727	49	-10	2,9	-0,6
Western Cape	276	320	294	280	287	7	11	2,5	4,0
Eastern Cape	171	155	158	158	163	5	-8	3,2	-4,7
Northern Cape	13	15	16	10	11	1	-2	10,0	-15,4
Free State	65	64	54	57	59	2	-6	3,5	-9,2
KwaZulu-Natal	400	428	386	389	392	3	-8	0,8	-2,0
North West	67	62	56	56	55	-1	-12	-1,8	-17,9
Gauteng	600	608	608	589	607	18	7	3,1	1,2
Mpumalanga	77	76	81	76	77	1	0	1,3	0,0
Limpopo	67	62	69	63	76	13	9	20,6	13,4

For all values of 10 000 or lower the sample size is too small for reliable estimates.
Due to rounding, numbers do not necessarily add up to totals.

Table 3.2: Employed by industry and province (continued)#

	Jul–Sep 2011	Oct–Dec 2011	Jan–Mar 2012	Apr–Jun 2012	Jul–Sep 2012	Qrt-to-Qrt change	Year-on-year change	Qrt-to-Qrt change	Year-on- year change
	Thousand	Thousand	Thousand	Thousand	Thousand	Thousand	Thousand	Percent	Percent
Utilities	73	81	91	98	105	7	32	7,1	43,8
Western Cape	10	6	4	6	13	7	3	116,7	30,0
Eastern Cape	5	5	7	7	6	-1	1	-14,3	20,0
Northern Cape	3	3	4	3	3	0	0	0,0	0,0
Free State	3	3	5	6	6	0	3	0,0	100,0
KwaZulu-Natal	8	7	9	13	10	-3	2	-23,1	25,0
North West	3	3	3	5	8	3	5	60,0	166,7
Gauteng	24	25	26	22	28	6	4	27,3	16,7
Mpumalanga	14	22	24	26	22	-4	8	-15,4	57,1
Limpopo	5	7	8	11	9	-2	4	-18,2	80,0
Construction	1 086	1 057	986	1 012	1 046	34	-40	3,4	-3,7
Western Cape	129	144	135	144	135	-9	6	-6,3	4,7
Eastern Cape	107	124	108	106	143	37	36	34,9	33,6
Northern Cape	21	19	19	20	14	-6	-7	-30,0	-33,3
Free State	108	49	47	48	51	3	-57	6,3	-52,8
KwaZulu-Natal	234	239	210	211	215	4	-19	1,9	-8,1
North West	41	49	46	45	42	-3	1	-6,7	2,4
Gauteng	259	259	265	269	279	10	20	3,7	7,7
Mpumalanga	76	78	64	76	66	-10	-10	-13,2	-13,2
Limpopo	111	95	92	94	101	7	-10	7,4	-9,0
Trade	3 012	3 060	3 057	2 966	2 962	-4	-50	-0,1	-1,7
Western Cape	397	406	391	395	383	-12	-14	-3,0	-3,5
Eastern Cape	296	308	327	324	313	-11	17	-3,4	5,7
Northern Cape	40	42	41	42	48	6	8	14,3	20,0
Free State	176	173	160	156	149	-7	-27	-4,5	-15,3
KwaZulu-Natal	605	614	570	545	524	-21	-81	-3,9	-13,4
North West	130	138	152	145	151	6	21	4,1	16,2
Gauteng	894	914	944	851	910	59	16	6,9	1,8
Mpumalanga	222	222	228	249	224	-25	2	-10,0	0,9
Limpopo	252	242	246	259	259	0	7	0,0	2,8

For all values of 10 000 or lower the sample size is too small for reliable estimates.
Due to rounding, numbers do not necessarily add up to totals.

Table 3.2: Employed by industry and province (continued)

	Jul–Sep 2011	Oct–Dec 2011	Jan–Mar 2012	Apr–Jun 2012	Jul–Sep 2012	Qrt-to-Qrt change	Year-on-year change	Qrt-to-Qrt change	Year-on- year change
	Thousand	Thousand	Thousand	Thousand	Thousand	Thousand	Thousand	Percent	Percent
Transport	756	788	783	791	834	43	78	5,4	10,3
Western Cape	105	96	100	96	92	-4	-13	-4,2	-12,4
Eastern Cape	75	75	75	69	69		-6	0,0	-8,0
Northern Cape	10	10	10	8	10	2	0	25,0	0,0
Free State	33	35	27	30	32	2	-1	6,7	-3,0
KwaZulu-Natal	156	171	180	196	206	10	50	5,1	32,1
North West	22	26	26	30	31	1	9	3,3	40,9
Gauteng	278	298	263	254	293	39	15	15,4	5,4
Mpumalanga	42	39	48	56	47	-9	5	-16,1	11,9
Limpopo	35	39	55	53	54	1	19	1,9	54,3
Finance	1 768	1 739	1 741	1 737	1 811	74	43	4,3	2,4
Western Cape	288	281	293	282	273	-9	-15	-3,2	-5,2
Eastern Cape	138	147	126	102	120	18	-18	17,6	-13,0
Northern Cape	23	27	24	25	29	4	6	16,0	26,1
Free State	75	62	70	76	66	-10	-9	-13,2	-12,0
KwaZulu-Natal	287	277	276	282	298	16	11	5,7	3,8
North West	63	56	52	45	64	19	1	42,2	1,6
Gauteng	744	740	761	786	804	18	60	2,3	8,1
Mpumalanga	81	84	79	85	97	12	16	14,1	19,8
Limpopo	69	66	58	55	61	6	-8	10,9	-11,6
Community and social services	2 836	2 902	2 891	3 012	3 025	13	189	0,4	6,7
Western Cape	364	374	382	391	377	-14	13	-3,6	3,6
Eastern Cape	330	339	336	363	348	-15	18	-4,1	5,5
Northern Cape	83	79	83	89	87	-2	4	-2,2	4,8
Free State	197	192	181	176	180	4	-17	2,3	-8,6
KwaZulu-Natal	486	516	540	544	560	16	74	2,9	15,2
North West	151	165	161	164	175	11	24	6,7	15,9
Gauteng	805	830	824	900	899	-1	94	-0,1	11,7
Mpumalanga	163	163	149	148	158	10	-5	6,8	-3,1
Limpopo	257	244	234	236	242	6	-15	2,5	-5,8

For all values of 10 000 or lower the sample size is too small for reliable estimates.
Due to rounding, numbers do not necessarily add up to totals.

Table 3.2: Employed by industry and province (concluded)#									
	Jul-Sep 2011	Oct-Dec 2011	Jan-Mar 2012	Apr-Jun 2012	Jul-Sep 2012	Qrt-to-Qrt change	Year-on-year change	Qrt-to-Qrt change	Year-on- year change
	Thousand	Thousand	Thousand	Thousand	Thousand	Thousand	Thousand	Percent	Percent
Private households	1 098	1 118	1 151	1 153	1 124	-29	26	-2,5	2,4
Western Cape	119	117	117	117	119	2	0	1,7	0,0
Eastern Cape	106	110	94	106	109	3	3	2,8	2,8
Northern Cape	27	28	25	23	26	3	-1	13,0	-3,7
Free State	82	85	92	97	96	-1	14	-1,0	17,1
KwaZulu-Natal	220	201	239	229	222	-7	2	-3,1	0,9
North West	59	61	60	64	73	9	14	14,1	23,7
Gauteng	312	341	354	349	296	-53	-16	-15,2	-5,1
Mpumalanga	90	95	94	86	88	2	-2	2,3	-2,2
Limpopo	84	78	76	81	96	15	12	18,5	14,3

For all values of 10 000 or lower the sample size is too small for reliable estimates.
Due to rounding, numbers do not necessarily add up to totals.

Table 3.3: Employed by sector and industry - South Africa

	Jul-Sep 2011	Oct-Dec 2011	Jan-Mar 2012	Apr-Jun 2012	Jul-Sep 2012	Qrt-to-Qrt change	Year-on- year change	Qrt-to-Qrt change	Year-on- year change
	Thousand	Thousand	Thousand	Thousand	Thousand	Thousand	Thousand	Percent	Percent
Total employed	13 318	13 497	13 422	13 447	13 645	198	327	1,5	2,5
Formal and informal sector (Non-agricultural)	11 596	11 750	11 615	11 656	11 860	204	264	1,8	2,3
Mining	324	327	336	357	349	-8	25	-2,2	7,7
Manufacturing	1 737	1 789	1 722	1 678	1 727	49	-10	2,9	-0,6
Utilities	73	81	91	98	105	7	32	7,1	43,8
Construction	1 086	1 057	986	1 012	1 046	34	-40	3,4	-3,7
Trade	3 012	3 060	3 057	2 966	2 962	-4	-50	-0,1	-1,7
Transport	756	788	783	791	834	43	78	5,4	10,3
Finance	1 768	1 739	1 741	1 737	1 811	74	43	4,3	2,4
Community and social services	2 836	2 902	2 891	3 012	3 025	13	189	0,4	6,7
Other	4	6	7	5	1	-4	-3	-80,0	-75,0
Formal sector (Non- agricultural)	9 436	9 616	9 509	9 571	9 663	92	227	1,0	2,4
Mining	323	327	335	357	348	-9	25	-2,5	7,7
Manufacturing	1 527	1 586	1 540	1 507	1 531	24	4	1,6	0,3
Utilities	71	80	90	97	103	6	32	6,2	45,1
Construction	783	737	659	719	723	4	-60	0,6	-7,7
Trade	1 979	2 064	2 062	1 965	1 943	-22	-36	-1,1	-1,8
Transport	572	597	575	604	637	33	65	5,5	11,4
Finance	1 618	1 598	1 607	1 605	1 671	66	53	4,1	3,3
Community and social services	2 559	2 622	2 634	2 712	2 705	-7	146	-0,3	5,7
Other	4	5	7	5	1	-4	-3	-80,0	-75,0
Informal sector (Non-agricultural)	2 160	2 134	2 106	2 085	2 197	112	37	5,4	1,7
Mining	1	0	1	0	1	1	0		0,0
Manufacturing	209	203	182	171	196	25	-13	14,6	-6,2
Utilities	2	0	1	2	2	0	0	0,0	0,0
Construction	303	320	328	292	323	31	20	10,6	6,6
Trade	1 033	997	995	1 000	1 019	19	-14	1,9	-1,4
Transport	184	192	208	187	198	11	14	5,9	7,6
Finance	150	141	134	132	140	8	-10	6,1	-6,7
Community and social services	277	280	257	300	320	20	43	6,7	15,5
Other		1							
Agriculture	624	630	656	638	661	23	37	3,6	5,9
Private households	1 098	1 118	1 151	1 153	1 124	-29	26	-2,5	2,4

For all values of 10 000 or lower the sample size is too small for reliable estimates.
Due to rounding, numbers do not necessarily add up to totals.

Table 3.4: Employed by province and sector#

	Jul-Sep 2011	Oct-Dec 2011	Jan-Mar 2012	Apr-Jun 2012	Jul-Sep 2012	Qrt-to-Qrt change	Year-on- year change	Qrt-to-Qrt change	Year-on- year change
	Thousand	Thousand	Thousand	Thousand	Thousand	Thousand	Thousand	Percent	Percent
South Africa	13 318	13 497	13 422	13 447	13 645	198	327	1,5	2,5
Formal sector (Non-agricultural)	9 436	9 616	9 509	9 571	9 663	92	227	1,0	2,4
Informal sector (Non-agricultural)	2 160	2 134	2 106	2 085	2 197	112	37	5,4	1,7
Agriculture	624	630	656	638	661	23	37	3,6	5,9
Private households	1 098	1 118	1 151	1 153	1 124	-29	26	-2,5	2,4
Western Cape	1 806	1 842	1 847	1 815	1 806	-9	0	-0,5	0,0
Formal sector (Non-agricultural)	1 387	1 455	1 435	1 435	1 400	-35	13	-2,4	0,9
Informal sector (Non-agricultural)	188	176	168	162	163	1	-25	0,6	-13,3
Agriculture	113	94	127	102	123	21	10	20,6	8,8
Private households	119	117	117	117	119	2	0	1,7	0,0
Eastern Cape	1 298	1 326	1 279	1 298	1 330	32	32	2,5	2,5
Formal sector (Non-agricultural)	876	903	852	877	868	-9	-8	-1,0	-0,9
Informal sector (Non-agricultural)	249	250	286	254	294	40	45	15,7	18,1
Agriculture	67	64	47	60	60	0	-7	0,0	-10,4
Private households	106	110	94	106	109	3	3	2,8	2,8
Northern Cape	278	291	286	281	290	9	12	3,2	4,3
Formal sector (Non-agricultural)	170	178	186	189	186	-3	16	-1,6	9,4
Informal sector (Non-agricultural)	34	30	29	26	33	7	-1	26,9	-2,9
Agriculture	47	55	47	43	45	2	-2	4,7	-4,3
Private households	27	28	25	23	26	3	-1	13,0	-3,7
Free State	826	753	737	728	736	8	-90	1,1	-10,9
Formal sector (Non-agricultural)	544	488	472	475	465	-10	-79	-2,1	-14,5
Informal sector (Non-agricultural)	133	118	101	100	106	6	-27	6,0	-20,3
Agriculture	68	62	72	56	68	12	0	21,4	0,0
Private households	82	85	92	97	96	-1	14	-1,0	17,1
KwaZulu-Natal	2 510	2 562	2 519	2 520	2 533	13	23	0,5	0,9
Formal sector (Non-agricultural)	1 688	1 757	1 729	1 757	1 814	57	126	3,2	7,5
Informal sector (Non-agricultural)	505	509	460	443	408	-35	-97	-7,9	-19,2
Agriculture	97	95	91	91	89	-2	-8	-2,2	-8,2
Private households	220	201	239	229	222	-7	2	-3,1	0,9

For all values of 10 000 or lower the sample size is too small for reliable estimates.
Due to rounding, numbers do not necessarily add up to totals.

Table 3.4: Employed by province and sector (concluded)#									
	Jul–Sep 2011	Oct–Dec 2011	Jan–Mar 2012	Apr–Jun 2012	Jul–Sep 2012	Qrt-to-Qrt change	Year-on- year change	Qrt-to-Qrt change	Year-on- year change
	Thousand	Thousand	Thousand	Thousand	Thousand	Thousand	Thousand	Percent	Percent
North West	680	700	704	709	745	36	65	5,1	9,6
Formal sector (Non-agricultural)	506	519	514	505	535	30	29	5,9	5,7
Informal sector (Non-agricultural)	85	89	92	106	106	0	21	0,0	24,7
Agriculture	31	30	38	34	31	-3	0	-8,8	0,0
Private households	59	61	60	64	73	9	14	14,1	23,7
Gauteng	3 983	4 115	4 140	4 125	4 194	69	211	1,7	5,3
Formal sector (Non-agricultural)	3 126	3 217	3 233	3 227	3 301	74	175	2,3	5,6
Informal sector (Non-agricultural)	506	492	491	479	548	69	42	14,4	8,3
Agriculture	39	64	62	69	49	-20	10	-29,0	25,6
Private households	312	341	354	349	296	-53	-16	-15,2	-5,1
Mpumalanga	911	923	913	953	928	-25	17	-2,6	1,9
Formal sector (Non-agricultural)	563	555	548	568	554	-14	-9	-2,5	-1,6
Informal sector (Non-agricultural)	183	197	189	214	199	-15	16	-7,0	8,7
Agriculture	75	75	83	85	87	2	12	2,4	16,0
Private households	90	95	94	86	88	2	-2	2,3	-2,2
Limpopo	1 026	985	996	1 018	1 084	66	58	6,5	5,7
Formal sector (Non-agricultural)	577	544	541	538	540	2	-37	0,4	-6,4
Informal sector (Non-agricultural)	278	273	290	301	339	38	61	12,6	21,9
Agriculture	87	90	88	99	109	10	22	10,1	25,3
Private households	84	78	76	81	96	15	12	18,5	14,3

For all values of 10 000 or lower the sample size is too small for reliable estimates.
Due to rounding, numbers do not necessarily add up to totals.

Table 3.5: Employed by sex and occupation - South Africa#

	Jul-Sep 2011	Oct-Dec 2011	Jan-Mar 2012	Apr-Jun 2012	Jul-Sep 2012	Qrt-to-Qrt change	Year-on-year change	Qrt-to-Qrt change	Year-on- year change
	Thousand	Thousand	Thousand	Thousand	Thousand	Thousand	Thousand	Percent	Percent
Both sexes	13 318	13 497	13 422	13 447	13 645	198	327	1,5	2,5
Manager	1 130	1 130	1 102	1 062	1 135	73	5	6,9	0,4
Professional	763	745	747	816	798	-18	35	-2,2	4,6
Technician	1 440	1 498	1 532	1 577	1 523	-54	83	-3,4	5,8
Clerk	1 426	1 523	1 419	1 406	1 390	-16	-36	-1,1	-2,5
Sales and services	1 975	1 960	1 969	1 956	2 062	106	87	5,4	4,4
Skilled agriculture	61	67	61	67	67	0	6	0,0	9,8
Craft and related trade	1 655	1 637	1 605	1 581	1 662	81	7	5,1	0,4
Plant and machine operator	1 097	1 126	1 106	1 111	1 150	39	53	3,5	4,8
Elementary	2 894	2 933	2 983	2 957	2 982	25	88	0,8	3,0
Domestic worker	878	878	896	913	876	-37	-2	-4,1	-0,2
Women	5 807	5 920	5 902	5 872	5 940	68	133	1,2	2,3
Manager	349	340	357	337	346	9	-3	2,7	-0,9
Professional	373	343	321	370	343	-27	-30	-7,3	-8,0
Technician	796	838	854	842	859	17	63	2,0	7,9
Clerk	988	1 066	987	987	970	-17	-18	-1,7	-1,8
Sales and services	875	886	912	895	969	74	94	8,3	10,7
Skilled agriculture	20	21	22	17	22	5	2	29,4	10,0
Craft and related trade	185	186	188	154	168	14	-17	9,1	-9,2
Plant and machine operator	166	165	143	148	155	7	-11	4,7	-6,6
Elementary	1 211	1 233	1 248	1 248	1 271	23	60	1,8	5,0
Domestic worker	843	843	871	874	837	-37	-6	-4,2	-0,7
Men	7 511	7 577	7 520	7 574	7 706	132	195	1,7	2,6
Manager	781	790	745	725	789	64	8	8,8	1,0
Professional	390	402	427	446	455	9	65	2,0	16,7
Technician	643	660	678	736	664	-72	21	-9,8	3,3
Clerk	437	457	433	419	420	1	-17	0,2	-3,9
Sales and services	1 100	1 075	1 057	1 061	1 092	31	-8	2,9	-0,7
Skilled agriculture	41	46	40	50	46	-4	5	-8,0	12,2
Craft and related trade	1 471	1 452	1 417	1 427	1 494	67	23	4,7	1,6
Plant and machine operator	931	960	963	962	995	33	64	3,4	6,9
Elementary	1 683	1 700	1 735	1 710	1 711	1	28	0,1	1,7
Domestic worker	34	35	25	39	39	0	5	0,0	14,7

For all values of 10 000 or lower the sample size is too small for reliable estimates.
Due to rounding, numbers do not necessarily add up to totals.

Table 3.6: Employed by sex and status in employment - South Africa#

	Jul-Sep 2011	Oct-Dec 2011	Jan-Mar 2012	Apr-Jun 2012	Jul-Sep 2012	Qrt-to-Qrt change	Year-on- year change	Qrt-to-Qrt change	Year-on- year change
	Thousand	Thousand	Thousand	Thousand	Thousand	Thousand	Thousand	Percent	Percent
Both sexes	13 318	13 497	13 422	13 447	13 645	198	327	1,5	2,5
Employee	11 263	11 460	11 406	11 416	11 541	125	278	1,1	2,5
Employer	713	704	669	695	767	72	54	10,4	7,6
Own-account worker	1 231	1 230	1 247	1 243	1 236	-7	5	-0,6	0,4
Unpaid household member	112	103	100	93	101	8	-11	8,6	-9,8
Women	5 807	5 920	5 902	5 872	5 940	68	133	1,2	2,3
Employee	5 001	5 125	5 122	5 118	5 173	55	172	1,1	3,4
Employer	158	148	129	148	154	6	-4	4,1	-2,5
Own-account worker	584	580	582	543	544	1	-40	0,2	-6,8
Unpaid household member	65	68	70	64	69	5	4	7,8	6,2
Men	7 511	7 577	7 520	7 574	7 706	132	195	1,7	2,6
Employee	6 262	6 335	6 284	6 298	6 368	70	106	1,1	1,7
Employer	555	556	540	546	613	67	58	12,3	10,5
Own-account worker	647	650	666	701	692	-9	45	-1,3	7,0
Unpaid household member	47	36	30	29	33	4	-14	13,8	-29,8

For all values of 10 000 or lower the sample size is too small for reliable estimates.
Due to rounding, numbers do not necessarily add up to totals.

Table 3.7: Employed by sex and usual hours of work - South Africa#

	Jul-Sep 2011	Oct-Dec 2011	Jan-Mar 2012	Apr-Jun 2012	Jul-Sep 2012	Qrt-to-Qrt change	Year-on-year change	Qrt-to-Qrt change	Year-on- year change
	Thousand	Thousand	Thousand	Thousand	Thousand	Thousand	Thousand	Percent	Percent
Both sexes	13 318	13 497	13 422	13 447	13 645	198	327	1,5	2,5
Working less than 15 hours per week	227	238	218	228	247	19	20	8,3	8,8
Working 15-29 hours per week	779	774	811	784	797	13	18	1,7	2,3
Working 30-39 hours per week	957	932	989	936	991	55	34	5,9	3,6
Working 40-45 hours per week	7 389	7 424	7 377	7 504	7 455	-49	66	-0,7	0,9
Working more than 45 hours per week	3 966	4 129	4 027	3 994	4 155	161	189	4,0	4,8
Women	5 807	5 920	5 902	5 872	5 940	68	133	1,2	2,3
Working less than 15 hours per week	140	143	142	146	160	14	20	9,6	14,3
Working 15-29 hours per week	485	501	529	521	528	7	43	1,3	8,9
Working 30-39 hours per week	586	576	598	600	602	2	16	0,3	2,7
Working 40-45 hours per week	3 232	3 264	3 202	3 275	3 197	-78	-35	-2,4	-1,1
Working more than 45 hours per week	1 364	1 436	1 432	1 330	1 453	123	89	9,2	6,5
Men	7 511	7 577	7 520	7 574	7 706	132	195	1,7	2,6
Working less than 15 hours per week	87	95	76	82	88	6	1	7,3	1,1
Working 15-29 hours per week	293	273	282	263	269	6	-24	2,3	-8,2
Working 30-39 hours per week	371	356	391	336	389	53	18	15,8	4,9
Working 40-45 hours per week	4 157	4 159	4 175	4 229	4 257	28	100	0,7	2,4
Working more than 45 hours per week	2 602	2 693	2 595	2 664	2 703	39	101	1,5	3,9

For all values of 10 000 or lower the sample size is too small for reliable estimates.
Due to rounding, numbers do not necessarily add up to totals.

Table 3.8: Conditions of employment - South Africa

	Jul–Sep 2011	Oct–Dec 2011	Jan–Mar 2012	Apr–Jun 2012	Jul–Sep 2012	Qrt-to-Qrt change	Year-on- year change	Qrt-to-Qrt change	Year-on- year change
	Thousand	Thousand	Thousand	Thousand	Thousand	Thousand	Thousand	Percent	Percent
Pension/retirement fund contribution									
Both sexes	11 263	11 460	11 406	11 416	11 541	125	278	1,1	2,5
Yes	5 355	5 537	5 513	5 631	5 603	-28	248	-0,5	4,6
No	5 740	5 769	5 726	5 612	5 711	99	-29	1,8	-0,5
Don't know	168	154	167	172	227	55	59	32,0	35,1
Women	5 001	5 125	5 122	5 118	5 173	55	172	1,1	3,4
Yes	2 246	2 315	2 288	2 347	2 321	-26	75	-1,1	3,3
No	2 688	2 743	2 760	2 707	2 758	51	70	1,9	2,6
Don't know	68	66	75	64	94	30	26	46,9	38,2
Men	6 262	6 335	6 284	6 298	6 368	70	106	1,1	1,7
Yes	3 110	3 222	3 225	3 284	3 282	-2	172	-0,1	5,5
No	3 052	3 025	2 966	2 905	2 952	47	-100	1,6	-3,3
Don't know	101	88	93	109	133	24	32	22,0	31,7
Entitled to any paid leave									
Both sexes	11 263	11 460	11 406	11 416	11 541	125	278	1,1	2,5
Yes	7 444	7 631	7 613	7 568	6 968	-600	-476	-7,9	-6,4
No	3 691	3 712	3 680	3 723	4 401	678	710	18,2	19,2
Don't know	129	118	112	124	172	48	43	38,7	33,3
Women	5 001	5 125	5 122	5 118	5 173	55	172	1,1	3,4
Yes	3 256	3 343	3 314	3 284	3 035	-249	-221	-7,6	-6,8
No	1 698	1 741	1 752	1 791	2 076	285	378	15,9	22,3
Don't know	47	41	55	43	63	20	16	46,5	34,0
Men	6 262	6 335	6 284	6 298	6 368	70	106	1,1	1,7
Yes	4 187	4 288	4 299	4 284	3 934	-350	-253	-8,2	-6,0
No	1 993	1 971	1 928	1 933	2 325	392	332	20,3	16,7
Don't know	82	76	57	81	109	28	27	34,6	32,9

For all values of 10 000 or lower the sample size is too small for reliable estimates.
Due to rounding, numbers do not necessarily add up to totals.

Table 3.8: Conditions of employment - South Africa (continued)

	Jul-Sep 2011	Oct-Dec 2011	Jan-Mar 2012	Apr-Jun 2012	Jul-Sep 2012	Qrt-to-Qrt change	Year-on- year change	Qrt-to-Qrt change	Year-on- year change
	Thousand	Thousand	Thousand	Thousand	Thousand	Thousand	Thousand	Percent	Percent
Entitled to paid sick leave									
Both sexes	11 263	11 460	11 406	11 416	11 541	125	278	1,1	2,5
Yes	7 705	7 846	7 909	7 879	7 893	14	188	0,2	2,4
No	3 558	3 614	3 497	3 537	3 648	111	90	3,1	2,5
Women	5 001	5 125	5 122	5 118	5 173	55	172	1,1	3,4
Yes	3 394	3 471	3 487	3 449	3 438	-11	44	-0,3	1,3
No	1 607	1 654	1 635	1 669	1 735	66	128	4,0	8,0
Men	6 262	6 335	6 284	6 298	6 368	70	106	1,1	1,7
Yes	4 311	4 374	4 422	4 430	4 455	25	144	0,6	3,3
No	1 951	1 961	1 862	1 868	1 913	45	-38	2,4	-1,9
Entitled to maternity/paternity leave									
Both sexes	11 263	11 460	11 406	11 416	11 541	125	278	1,1	2,5
Yes	6 090	6 415	6 338	6 284	5 969	-315	-121	-5,0	-2,0
No	5 173	5 045	5 068	5 132	5 572	440	399	8,6	7,7
Women	5 001	5 125	5 122	5 118	5 173	55	172	1,1	3,4
Yes	2 789	2 961	2 910	2 898	2 792	-106	3	-3,7	0,1
No	2 212	2 163	2 211	2 220	2 381	161	169	7,3	7,6
Men	6 262	6 335	6 284	6 298	6 368	70	106	1,1	1,7
Yes	3 300	3 454	3 427	3 386	3 177	-209	-123	-6,2	-3,7
No	2 962	2 881	2 856	2 912	3 191	279	229	9,6	7,7

For all values of 10 000 or lower the sample size is too small for reliable estimates.
 Due to rounding, numbers do not necessarily add up to totals.

Table 3.8: Conditions of employment - South Africa (continued)

	Jul-Sep 2011	Oct-Dec 2011	Jan-Mar 2012	Apr-Jun 2012	Jul-Sep 2012	Qrt-to-Qrt change	Year-on- year change	Qrt-to-Qrt change	Year-on- year change
	Thousand	Thousand	Thousand	Thousand	Thousand	Thousand	Thousand	Percent	Percent
UIF contribution									
Both sexes	11 263	11 460	11 406	11 416	11 541	125	278	1,1	2,5
Yes	6 479	6 563	6 541	6 463	7 159	696	680	10,8	10,5
No	4 670	4 748	4 738	4 819	4 183	-636	-487	-13,2	-10,4
Don't know	114	148	127	134	200	66	86	49,3	75,4
Women	5 001	5 125	5 122	5 118	5 173	55	172	1,1	3,4
Yes	2 667	2 688	2 684	2 640	2 957	317	290	12,0	10,9
No	2 289	2 363	2 378	2 434	2 132	-302	-157	-12,4	-6,9
Don't know	46	73	60	43	85	42	39	97,7	84,8
Men	6 262	6 335	6 284	6 298	6 368	70	106	1,1	1,7
Yes	3 812	3 875	3 857	3 823	4 202	379	390	9,9	10,2
No	2 381	2 385	2 360	2 385	2 051	-334	-330	-14,0	-13,9
Don't know	68	75	66	90	115	25	47	27,8	69,1
Medical aid benefits									
Both sexes	11 263	11 460	11 406	11 416	11 541	125	278	1,1	2,5
Yes	3 523	3 689	3 686	3 767	3 821	54	298	1,4	8,5
No	7 648	7 672	7 634	7 538	7 601	63	-47	0,8	-0,6
Don't know	92	99	86	110	119	9	27	8,2	29,3
Women	5 001	5 125	5 122	5 118	5 173	55	172	1,1	3,4
Yes	1 541	1 613	1 594	1 640	1 640	0	99	0,0	6,4
No	3 420	3 458	3 480	3 430	3 486	56	66	1,6	1,9
Don't know	40	54	48	47	47	0	7	0,0	17,5
Men	6 262	6 335	6 284	6 298	6 368	70	106	1,1	1,7
Yes	1 982	2 075	2 091	2 127	2 181	54	199	2,5	10,0
No	4 228	4 214	4 154	4 108	4 115	7	-113	0,2	-2,7
Don't know	52	46	39	63	72	9	20	14,3	38,5

For all values of 10 000 or lower the sample size is too small for reliable estimates.
Due to rounding, numbers do not necessarily add up to totals.

Table 3.8: Conditions of employment - South Africa (continued)

	Jul-Sep 2011	Oct-Dec 2011	Jan-Mar 2012	Apr-Jun 2012	Jul-Sep 2012	Qrt-to-Qrt change	Year-on- year change	Qrt-to-Qrt change	Year-on- year change
	Thousand	Thousand	Thousand	Thousand	Thousand	Thousand	Thousand	Percent	Percent
Income tax (PAYE/ SITE) deduction									
Both sexes	11 263	11 460	11 406	11 416	11 541	125	278	1,1	2,5
Yes	6 338	6 527	6 390	6 369	6 422	53	84	0,8	1,3
No	4 784	4 781	4 861	4 872	4 900	28	116	0,6	2,4
Don't know	141	152	154	175	219	44	78	25,1	55,3
Women	5 001	5 125	5 122	5 118	5 173	55	172	1,1	3,4
Yes	2 654	2 742	2 667	2 674	2 674	0	20	0,0	0,8
No	2 293	2 323	2 387	2 383	2 428	45	135	1,9	5,9
Don't know	55	60	68	60	71	11	16	18,3	29,1
Men	6 262	6 335	6 284	6 298	6 368	70	106	1,1	1,7
Yes	3 684	3 785	3 723	3 695	3 748	53	64	1,4	1,7
No	2 492	2 458	2 474	2 488	2 471	-17	-21	-0,7	-0,8
Don't know	86	93	87	115	149	34	63	29,6	73,3
Condition of employment									
Both sexes	11 263	11 460	11 406	11 416	11 541	125	278	1,1	2,5
Written contract	8 993	9 149	9 163	9 233	9 311	78	318	0,8	3,5
Verbal agreement	2 270	2 311	2 243	2 182	2 229	47	-41	2,2	-1,8
Women	5 001	5 125	5 122	5 118	5 173	55	172	1,1	3,4
Written contract	3 930	4 035	4 029	4 055	4 088	33	158	0,8	4,0
Verbal agreement	1 071	1 090	1 093	1 063	1 085	22	14	2,1	1,3
Men	6 262	6 335	6 284	6 298	6 368	70	106	1,1	1,7
Written contract	5 063	5 114	5 134	5 178	5 223	45	160	0,9	3,2
Verbal agreement	1 199	1 221	1 150	1 120	1 144	24	-55	2,1	-4,6

For all values of 10 000 or lower the sample size is too small for reliable estimates.
 Due to rounding, numbers do not necessarily add up to totals.

Table 3.8: Conditions of employment - South Africa (continued)

	Jul-Sep 2011	Oct-Dec 2011	Jan-Mar 2012	Apr-Jun 2012	Jul-Sep 2012	Qrt-to-Qrt change	Year-on- year change	Qrt-to-Qrt change	Year-on- year change
	Thousand	Thousand	Thousand	Thousand	Thousand	Thousand	Thousand	Percent	Percent
Nature of contract/agreement									
Both sexes	11 263	11 460	11 406	11 416	11 541	125	278	1,1	2,5
Limited duration	1 498	1 495	1 477	1 571	1 622	51	124	3,2	8,3
Permanent nature	7 208	7 384	7 364	7 350	7 342	-8	134	-0,1	1,9
Unspecified duration	2 557	2 581	2 565	2 495	2 577	82	20	3,3	0,8
Women	5 001	5 125	5 122	5 118	5 173	55	172	1,1	3,4
Limited duration	646	685	680	712	762	50	116	7,0	18,0
Permanent nature	3 138	3 225	3 217	3 190	3 172	-18	34	-0,6	1,1
Unspecified duration	1 217	1 215	1 225	1 216	1 239	23	22	1,9	1,8
Men	6 262	6 335	6 284	6 298	6 368	70	106	1,1	1,7
Limited duration	852	810	797	859	860	1	8	0,1	0,9
Permanent nature	4 070	4 159	4 147	4 160	4 170	10	100	0,2	2,5
Unspecified duration	1 340	1 366	1 340	1 279	1 338	59	-2	4,6	-0,1
Trade union membership									
Both sexes	11 263	11 460	11 406	11 416	11 541	125	278	1,1	2,5
Yes	3 265	3 363	3 327	3 406	3 367	-39	102	-1,1	3,1
No	7 772	7 876	7 842	7 768	7 858	90	86	1,2	1,1
Don't know	226	221	237	241	315	74	89	30,7	39,4
Women	5 001	5 125	5 122	5 118	5 173	55	172	1,1	3,4
Yes	1 334	1 368	1 344	1 374	1 354	-20	20	-1,5	1,5
No	3 578	3 665	3 680	3 647	3 700	53	122	1,5	3,4
Don't know	90	92	98	96	119	23	29	24,0	32,2
Men	6 262	6 335	6 284	6 298	6 368	70	106	1,1	1,7
Yes	1 932	1 995	1 984	2 032	2 013	-19	81	-0,9	4,2
No	4 194	4 212	4 161	4 121	4 158	37	-36	0,9	-0,9
Don't know	136	128	139	145	196	51	60	35,2	44,1

For all values of 10 000 or lower the sample size is too small for reliable estimates.
Due to rounding, numbers do not necessarily add up to totals.

Table 3.8: Conditions of employment - South Africa (concluded)

	Jul-Sep 2011	Oct-Dec 2011	Jan-Mar 2012	Apr-Jun 2012	Jul-Sep 2012	Qrt-to-Qrt change	Year-on- year change	Qrt-to-Qrt change	Year-on- year change
	Thousand	Thousand	Thousand	Thousand	Thousand	Thousand	Thousand	Percent	Percent
How annual salary increment is negotiated									
Both sexes	11 263	11 460	11 406	11 416	11 541	125	278	1,1	2,5
Individual and employer	1 542	1 442	1 404	1 337	1 425	88	-117	6,6	-7,6
Union and employer	2 491	2 551	2 660	2 738	2 574	-164	83	-6,0	3,3
Bargaining council	1 052	1 031	1 054	1 079	1 121	42	69	3,9	6,6
Employer only	5 418	5 779	5 647	5 586	5 777	191	359	3,4	6,6
No regular increment	710	593	565	619	584	-35	-126	-5,7	-17,7
Other	49	65	75	56	60	4	11	7,1	22,4
Women	5 001	5 125	5 122	5 118	5 173	55	172	1,1	3,4
Individual and employer	661	634	592	590	619	29	-42	4,9	-6,4
Union and employer	996	989	1 032	1 065	967	-98	-29	-9,2	-2,9
Bargaining council	500	506	503	507	561	54	61	10,7	12,2
Employer only	2 502	2 671	2 679	2 643	2 719	76	217	2,9	8,7
No regular increment	321	296	284	293	285	-8	-36	-2,7	-11,2
Other	21	28	33	20	21	1		5,0	0,0
Men	6 262	6 335	6 284	6 298	6 368	70	106	1,1	1,7
Individual and employer	881	807	812	748	806	58	-75	7,8	-8,5
Union and employer	1 495	1 561	1 629	1 673	1 606	-67	111	-4,0	7,4
Bargaining council	553	525	552	572	560	-12	7	-2,1	1,3
Employer only	2 916	3 108	2 968	2 943	3 057	114	141	3,9	4,8
No regular increment	389	297	281	327	300	-27	-89	-8,3	-22,9
Other	28	37	42	36	39	3	11	8,3	39,3

For all values of 10 000 or lower the sample size is too small for reliable estimates.
 Due to rounding, numbers do not necessarily add up to totals.

Table 3.9: Time-related underemployment - South Africa#

	Jul-Sep 2011	Oct-Dec 2011	Jan-Mar 2012	Apr-Jun 2012	Jul-Sep 2012	Qrt-to-Qrt change	Year-on- year change	Qrt-to-Qrt change	Year-on- year change
	Thousand	Thousand	Thousand	Thousand	Thousand	Thousand	Thousand	Percent	Percent
Both sexes	490	521	544	531	549	18	59	3,4	12,0
Women	297	306	313	327	337	10	40	3,1	13,5
Men	193	215	231	204	212	8	19	3,9	9,8
As percentage of the labour force (Both sexes)	2,8	2,9	3,0	3,0	3,0	0,0	0,2		
Women	3,7	3,8	3,8	4,0	4,1	0,1	0,4		
Men	2,0	2,2	2,4	2,1	2,1	0,0	0,1		
As percentage of total employment (Both sexes)	3,7	3,9	4,1	3,9	4,0	0,1	0,3		
Women	5,1	5,2	5,3	5,6	5,7	0,1	0,6		
Men	2,6	2,8	3,1	2,7	2,8	0,1	0,2		
Industry	490	521	544	531	549	18	59	3,4	12,0
Agriculture	10	11	14	7	11	4	1	57,1	10,0
Mining	0	1	0	0					
Manufacturing	37	50	32	29	32	3	-5	10,3	-13,5
Utilities			0						
Construction	55	48	57	53	75	22	20	41,5	36,4
Trade	83	98	126	99	93	-6	10	-6,1	12,0
Transport	10	10	19	14	16	2	6	14,3	60,0
Finance	45	35	33	38	37	-1	-8	-2,6	-17,8
Community and social services	74	77	68	91	91	0	17	0,0	23,0
Private households	176	191	196	200	193	-7	17	-3,5	9,7
Occupation	490	521	544	531	549	18	59	3,4	12,0
Manager	18	7	6	7	11	4	-7	57,1	-38,9
Professional	7	6	6	6	7	1	0	16,7	0,0
Technician	26	29	24	32	29	-3	3	-9,4	11,5
Clerk	20	14	16	14	18	4	-2	28,6	-10,0
Sales and services	43	48	55	56	58	2	15	3,6	34,9
Skilled agriculture	3	4	5	2	3	1	0	50,0	0,0
Craft and related trade	62	72	75	63	71	8	9	12,7	14,5
Plant and machine operator	10	14	15	16	15	-1	5	-6,3	50,0
Elementary	168	190	200	185	185	0	17	0,0	10,1
Domestic worker	133	138	142	151	152	1	19	0,7	14,3

For all values of 10 000 or lower the sample size is too small for reliable estimates.
 Due to rounding, numbers do not necessarily add up to totals.

Table 4: Characteristics of the unemployed - South Africa

	Jul-Sep 2011	Oct-Dec 2011	Jan-Mar 2012	Apr-Jun 2012	Jul-Sep 2012	Qrt-to-Qrt change	Year-on- year change	Qrt-to- Qrt change	Year-on- year change
	Thousand	Thousand	Thousand	Thousand	Thousand	Thousand	Thousand	Percent	Percent
Unemployed	4 442	4 244	4 526	4 470	4 667	197	225	4,4	5,1
Job losers	1 339	1 288	1 400	1 458	1 417	-41	78	-2,8	5,8
Job leavers	264	260	275	232	284	52	20	22,4	7,6
New entrants	1 973	1 850	1 993	1 924	2 075	151	102	7,8	5,2
Re-entrants	218	236	164	161	178	17	-40	10,6	-18,3
Other	648	610	694	694	714	20	66	2,9	10,2
Unemployed	4 442	4 244	4 526	4 470	4 667	197	225	4,4	5,1
Long-term unemployment (1 year and more)	3 029	2 866	3 069	3 032	3 132	100	103	3,3	3,4
Short-term unemployment (less than 1 year)	1 413	1 378	1 457	1 437	1 535	98	122	6,8	8,6
Long-term unemployment (%)									
Proportion of the labour force	17,1	16,2	17,1	16,9	17,1	0,2	0,0		
Proportion of the unemployed	68,2	67,5	67,8	67,8	67,1	-0,7	-1,1		
Those who have worked in the past 5 years									
Previous occupation	1 821	1 784	1 839	1 851	1 879	28	58	1,5	3,2
Manager	45	45	53	31	40	9	-5	29,0	-11,1
Professional	43	39	39	45	33	-12	-10	-26,7	-23,3
Technician	114	94	100	96	95	-1	-19	-1,0	-16,7
Clerk	222	218	235	240	248	8	26	3,3	11,7
Sales and services	275	262	270	291	291	0	16	0,0	5,8
Skilled agriculture	6	6	7	9	4	-5	-2	-55,6	-33,3
Craft and related trade	292	293	328	315	308	-7	16	-2,2	5,5
Plant and machine operator	155	154	147	144	159	15	4	10,4	2,6
Elementary	518	512	525	527	542	15	24	2,8	4,6
Domestic worker	150	161	137	153	157	4	7	2,6	4,7
Other					3				

For all values of 10 000 or lower the sample size is too small for reliable estimates.
 Due to rounding, numbers do not necessarily add up to totals.

Table 4: Characteristics of the unemployed - South Africa (concluded)#									
	Jul-Sep 2011	Oct-Dec 2011	Jan-Mar 2012	Apr-Jun 2012	Jul-Sep 2012	Qrt-to-Qrt change	Year-on- year change	Qrt-to- Qrt change	Year- on-year change
	Thousand	Thousand	Thousand	Thousand	Thousand	Thousand	Thousand	Percent	Percent
Previous industry	1 821	1 784	1 839	1 851	1 879	28	58	1,5	3,2
Agriculture	81	80	70	86	85	-1	4	-1,2	4,9
Mining	31	24	21	35	35	0	4	0,0	12,9
Manufacturing	264	251	266	258	256	-2	-8	-0,8	-3,0
Utilities	7	12	9	5	6	1	-1	20,0	-14,3
Construction	278	256	298	297	269	-28	-9	-9,4	-3,2
Trade	420	440	429	432	450	18	30	4,2	7,1
Transport	97	94	91	85	96	11	-1	12,9	-1,0
Finance	234	223	228	233	265	32	31	13,7	13,2
Community and social services	204	204	231	221	206	-15	2	-6,8	1,0
Private households	206	199	197	199	208	9	2	4,5	1,0
Other		1			3				

For all values of 10 000 or lower the sample size is too small for reliable estimates.
Due to rounding, numbers do not necessarily add up to totals.

Table 5: Characteristics of the not economically active - South Africa#									
	Jul-Sep 2011	Oct-Dec 2011	Jan-Mar 2012	Apr-Jun 2012	Jul-Sep 2012	Qrt-to-Qrt change	Year-on-year change	Qrt-to-Qrt change	Year-on- year change
	Thousand	Thousand	Thousand	Thousand	Thousand	Thousand	Thousand	Percent	Percent
Not economically active	14 795	14 929	14 838	14 987	14 705	-282	-90	-1,9	-0,6
Student	6 184	6 235	6 161	6 391	6 225	-166	41	-2,6	0,7
Home-maker	2 842	2 836	2 784	2 726	2 741	15	-101	0,6	-3,6
Illness/disability	1 618	1 585	1 608	1 637	1 673	36	55	2,2	3,4
Too old/young to work	1 249	1 215	1 213	1 263	1 198	-65	-51	-5,1	-4,1
Discouraged work seekers	2 204	2 315	2 335	2 311	2 170	-141	-34	-6,1	-1,5
Other	698	743	738	658	698	40		6,1	0,0
Inactivity rate by age (Both sexes)	45,4	45,7	45,3	45,5	44,5	-1,0	-0,9		
15-24 yrs	74,7	75,1	73,9	75,8	74,3	-1,5	-0,4		
25-54 yrs	27,5	27,8	27,7	27,1	26,4	-0,7	-1,1		
55-64 yrs	59,5	58,6	59,3	60,0	58,8	-1,2	-0,7		
Inactivity rate by age (Women)	51,8	52,1	51,5	52,1	51,2	-0,9	-0,6		
15-24 yrs	77,2	77,3	76,4	78,2	76,5	-1,7	-0,7		
25-54 yrs	36,1	36,6	36,1	36,1	35,3	-0,8	-0,8		
55-64 yrs	67,9	66,8	67,3	67,6	68,8	1,2	0,9		
Inactivity rate by age (Men)	38,7	38,9	38,6	38,7	37,5	-1,2	-1,2		
15-24 yrs	72,2	73,0	71,5	73,5	72,2	-1,3	0,0		
25-54 yrs	18,1	18,3	18,6	17,4	16,9	-0,5	-1,2		
55-64 yrs	49,5	48,7	49,6	50,9	46,9	-4,0	-2,6		

Due to rounding, numbers do not necessarily add up to totals.

Table 6: Socio-demographic characteristics - South Africa

	Jul-Sep 2011	Oct-Dec 2011	Jan-Mar 2012	Apr-Jun 2012	Jul-Sep 2012	Qrt-to-Qrt change	Year-on- year change	Qrt-to- Qrt change	Year-on- year change
	Thousand	Thousand	Thousand	Thousand	Thousand	Thousand	Thousand	Percent	Percent
Age group of the employed	13 318	13 497	13 422	13 447	13 645	198	327	1,5	2,5
15-24 yrs	1 297	1 306	1 305	1 217	1 278	61	-19	5,0	-1,5
25-34 yrs	4 417	4 522	4 491	4 519	4 572	53	155	1,2	3,5
35-44 yrs	3 847	3 921	3 899	3 993	4 033	40	186	1,0	4,8
45-54 yrs	2 596	2 553	2 551	2 551	2 555	4	-41	0,2	-1,6
55-64 yrs	1 162	1 196	1 175	1 167	1 206	39	44	3,3	3,8
Age group of the unemployed	4 442	4 244	4 526	4 470	4 667	197	225	4,4	5,1
15-24 yrs	1 319	1 267	1 393	1 291	1 386	95	67	7,4	5,1
25-34 yrs	1 851	1 737	1 819	1 870	1 921	51	70	2,7	3,8
35-44 yrs	857	813	862	864	908	44	51	5,1	6,0
45-54 yrs	341	349	366	364	368	4	27	1,1	7,9
55-64 yrs	75	79	86	80	85	5	10	6,3	13,3
Age group of the not economically active	14 795	14 929	14 838	14 987	14 705	-282	-90	-1,9	-0,6
15-24 yrs	7 711	7 770	7 658	7 863	7 720	-143	9	-1,8	0,1
25-34 yrs	2 439	2 481	2 465	2 421	2 352	-69	-87	-2,9	-3,6
35-44 yrs	1 493	1 508	1 528	1 477	1 439	-38	-54	-2,6	-3,6
45-54 yrs	1 331	1 368	1 354	1 358	1 352	-6	21	-0,4	1,6
55-64 yrs	1 821	1 802	1 834	1 867	1 841	-26	20	-1,4	1,1
Highest level of education of the employed	13 318	13 497	13 422	13 447	13 645	198	327	1,5	2,5
No schooling	360	350	373	347	328	-19	-32	-5,5	-8,9
Less than primary completed	1 151	1 090	1 073	1 033	1 039	6	-112	0,6	-9,7
Primary completed	590	590	601	594	598	4	8	0,7	1,4
Secondary not completed	4 455	4 523	4 469	4 426	4 738	312	283	7,0	6,4
Secondary completed	3 957	4 032	4 086	4 199	4 204	5	247	0,1	6,2
Tertiary	2 642	2 732	2 670	2 670	2 622	-48	-20	-1,8	-0,8
Other	163	179	151	178	115	-63	-48	-35,4	-29,4

Due to rounding, numbers do not necessarily add up to totals.

Table 6: Socio-demographic characteristics - South Africa (continued) #

	Jul-Sep 2011	Oct-Dec 2011	Jan-Mar 2012	Apr-Jun 2012	Jul-Sep 2012	Qrt-to-Qrt change	Year-on- year change	Qrt-to-Qrt change	Year-on- year change
	Thousand	Thousand	Thousand	Thousand	Thousand	Thousand	Thousand	Percent	Percent
Highest level of education of the unemployed	4 442	4 244	4 526	4 470	4 667	197	225	4,4	5,1
No schooling	81	67	80	66	73	7	-8	10,6	-9,9
Less than primary completed	302	287	305	294	319	25	17	8,5	5,6
Primary completed	205	205	193	196	208	12	3	6,1	1,5
Secondary not completed	2 085	2 014	2 119	2 096	2 246	150	161	7,2	7,7
Secondary completed	1 476	1 371	1 520	1 498	1 531	33	55	2,2	3,7
Tertiary	260	266	280	280	276	-4	16	-1,4	6,2
Other	34	33	29	40	15	-25	-19	-62,5	-55,9
Highest level of education of the not economically active	14 795	14 929	14 838	14 987	14 705	-282	-90	-1,9	-0,6
No schooling	813	773	797	769	763	-6	-50	-0,8	-6,2
Less than primary completed	1 885	1 899	1 787	1 814	1 779	-35	-106	-1,9	-5,6
Primary completed	1 147	1 174	1 017	1 093	1 076	-17	-71	-1,6	-6,2
Secondary not completed	7 876	8 019	7 839	7 999	7 967	-32	91	-0,4	1,2
Secondary completed	2 526	2 532	2 847	2 754	2 622	-132	96	-4,8	3,8
Tertiary	420	416	425	426	415	-11	-5	-2,6	-1,2
Other	128	116	126	131	82	-49	-46	-37,4	-35,9
Employed	-	-	-	-	13 645	-	-	-	-
Attending educational institution	-	-	-	-	351	-	-	-	-
Not attending educational institution	-	-	-	-	13 294	-	-	-	-
Unemployed	-	-	-	-	4 667	-	-	-	-
Attending educational institution	-	-	-	-	103	-	-	-	-
Not attending educational institution	-	-	-	-	4 564	-	-	-	-
Not economically active	-	-	-	-	14 705	-	-	-	-
Attending educational institution	-	-	-	-	6 057	-	-	-	-
Not attending educational institution	-	-	-	-	8 648	-	-	-	-

Table 6: Socio-demographic characteristics - South Africa (continued)

	Jul-Sep 2011	Oct-Dec 2011	Jan-Mar 2012	Apr-Jun 2012	Jul-Sep 2012	Qrt-to-Qrt change	Year-on- year change	Qrt-to-Qrt change	Year-on- year change
	Thousand	Thousand	Thousand	Thousand	Thousand	Thousand	Thousand	Percent	Percent
Employed and attending by type of educational institution	-	-	-	-	351	-	-	-	-
Ordinary school	-	-	-	-	28	-	-	-	-
Special school	-	-	-	-	1	-	-	-	-
Further education and training college (FET)	-	-	-	-	36	-	-	-	-
Other college	-	-	-	-	34	-	-	-	-
Higher education institution	-	-	-	-	242	-	-	-	-
Adult basic education and training centre(ABET CENTRE)	-	-	-	-	5	-	-	-	-
Literacy classes (e.g KHA RI GUDE, SANLI)	-	-	-	-	2	-	-	-	-
Home based education or home schooling	-	-	-	-	1	-	-	-	-
Unemployed and attending by type of educational institution	-	-	-	-	103	-	-	-	-
Ordinary school	-	-	-	-	47	-	-	-	-
Special school	-	-	-	-	1	-	-	-	-
Further education and training college (FET)	-	-	-	-	13	-	-	-	-
Other college	-	-	-	-	10	-	-	-	-
Higher education institution	-	-	-	-	19	-	-	-	-
Adult basic education and training centre(ABET CENTRE)	-	-	-	-	10	-	-	-	-
Literacy classes (e.g KHA RI GUDE, SANLI)	-	-	-	-	-	-	-	-	-
Home based education or home schooling	-	-	-	-	-	-	-	-	-
Not economically active and attending by type of educational institution	-	-	-	-	6 057	-	-	-	-
Ordinary school	-	-	-	-	4 962	-	-	-	-
Special school	-	-	-	-	42	-	-	-	-
Further education and training college (FET)	-	-	-	-	294	-	-	-	-
Other college	-	-	-	-	116	-	-	-	-
Higher education institution	-	-	-	-	560	-	-	-	-
Adult basic education and training centre(ABET CENTRE)	-	-	-	-	35	-	-	-	-
Literacy classes (e.g KHA RI GUDE, SANLI)	-	-	-	-	4	-	-	-	-
Home based education or home schooling	-	-	-	-	6	-	-	-	-

For all values of 10 000 or lower the sample size is too small for reliable estimates.

Table 6: Socio-demographic characteristics - South Africa (concluded)

	Jul-Sep 2011	Oct-Dec 2011	Jan-Mar 2012	Apr-Jun 2012	Jul-Sep 2012	Qrt-to-Qrt change	Year-on- year change	Qrt-to-Qrt change	Year-on- year change
	Thousand	Thousand	Thousand	Thousand	Thousand	Thousand	Thousand	Percent	Percent
Current marital status of the employed	13 318	13 497	13 422	13 447	13 645	198	327	1,5	2,5
Married	5 629	5 639	5 641	5 720	5 771	51	142	0,9	2,5
Living together like husband and wife	1 486	1 498	1 468	1 515	1 521	6	35	0,4	2,4
Widow/widower	420	428	430	405	424	19	4	4,7	1,0
Divorced or separated	431	469	476	477	488	11	57	2,3	13,2
Never married	5 353	5 463	5 407	5 330	5 441	111	88	2,1	1,6
Current marital status of the unemployed	4 442	4 244	4 526	4 470	4 667	197	225	4,4	5,1
Married	727	719	753	727	768	41	41	5,6	5,6
Living together like husband and wife	449	418	465	471	466	-5	17	-1,1	3,8
Widow/widower	63	63	58	55	58	3	-5	5,5	-7,9
Divorced or separated	81	79	80	75	77	2	-4	2,7	-4,9
Never married	3 123	2 964	3 169	3 142	3 298	156	175	5,0	5,6
Current marital status of the not economically active	14 795	14 929	14 838	14 987	14 705	-282	-90	-1,9	-0,6
Married	2 921	2 913	2 957	2 934	2 948	14	27	0,5	0,9
Living together like husband and wife	675	731	712	714	674	-40	-1	-5,6	-0,1
Widow/widower	652	659	641	640	640	0	-12	0,0	-1,8
Divorced or separated	237	246	253	242	230	-12	-7	-5,0	-3,0
Never married	10 309	10 380	10 276	10 456	10 214	-242	-95	-2,3	-0,9

Due to rounding, numbers do not necessarily add up to totals.

Table 7: Profile of those not in employment, education or training - South Africa									
	Jul-Sep 2011	Oct-Dec 2011	Jan-Mar 2012	Apr-Jun 2012	Jul-Sep 2012	Qrt-to-Qrt change	Year-on-year change	Qrt-to-Qrt change	Year-on- year change
	Thousand	Thousand	Thousand	Thousand	Thousand	Thousand	Thousand	Percent	Percent
Both sexes	-	-	-	-	13 213	-	-	-	-
Women	-	-	-	-	7 996	-	-	-	-
Men	-	-	-	-	5 216	-	-	-	-
Age group	-	-	-	-	13 213	-	-	-	-
15-24 yrs	-	-	-	-	3 262	-	-	-	-
25-34 yrs	-	-	-	-	4 011	-	-	-	-
35-44 yrs	-	-	-	-	2 310	-	-	-	-
45-54 yrs	-	-	-	-	1 710	-	-	-	-
55-64 yrs	-	-	-	-	1 920	-	-	-	-
Population groups	-	-	-	-	13 213	-	-	-	-
Black/African	-	-	-	-	10 963	-	-	-	-
Coloured	-	-	-	-	1 202	-	-	-	-
Indian/Asian	-	-	-	-	337	-	-	-	-
White	-	-	-	-	710	-	-	-	-
South Africa	-	-	-	-	13 213	-	-	-	-
Western Cape	-	-	-	-	1 274	-	-	-	-
Eastern Cape	-	-	-	-	1 904	-	-	-	-
Northern Cape	-	-	-	-	319	-	-	-	-
Free State	-	-	-	-	808	-	-	-	-
KwaZulu-Natal	-	-	-	-	2 889	-	-	-	-
North West	-	-	-	-	944	-	-	-	-
Gauteng	-	-	-	-	2 671	-	-	-	-
Mpumalanga	-	-	-	-	990	-	-	-	-
Limpopo	-	-	-	-	1 415	-	-	-	-

Table 8: Involvement in non-market activities and labour market status by province									
	Jul-Sep 2011	Oct-Dec 2011	Jan-Mar 2012	Apr-Jun 2012	Jul-Sep 2012	Qrt-to-Qrt change	Year-on- year change	Qrt-to- Qrt change	Year- on-year change
	Thousand	Thousand	Thousand	Thousand	Thousand	Thousand	Thousand	Percent	Percent
South Africa									
Subsistence farming	1921	1796	2077	1526	1517	-9	-404	-0,6	-21,0
Fetching water or collecting wood/dung	4 642	4 144	4 292	4 046	4 383	337	-259,0	8,3	-5,6
Produce other goods for household use	457	161	189	96	99	3	-358,0	3,1	-78,3
Construction or major repairs to own or household'	606	330	321	341	214	-127	-392,0	-37,2	-64,7
Hunting or fishing for household use	320	42	46	33	30	-3	-290,0	-9,1	-90,6
Involvement in at least one activity	6 254	5 152	5 540	4 903	5 271	368	-983,0	7,5	-15,7
Employed	1 515	1 146	1 211	1 005	1 137	132	-378,0	13,1	-25,0
Unemployed	759	596	675	615	770	155	11,0	25,2	1,4
Not economically active	3 980	3 411	3 654	3 283	3 364	81	-616,0	2,5	-15,5
Eastern Cape									
Subsistence farming	493	521	523	466	392	-74	-101,0	-15,9	-20,5
Fetching water or collecting wood/dung	1 062	1 003	1 024	1 034	1 071	37	9,0	3,6	0,8
Produce other goods for household use	59	18	22	11	6	-5	-53,0	-45,5	-89,8
Construction or major repairs to own or household'	142	118	104	166	73	-93	-69,0	-56,0	-48,6
Hunting or fishing for household use	41	5	6	1					
Involvement in at least one activity	1 334	1 242	1 348	1 326	1 317	-9	-17,0	-0,7	-1,3
Employed	215	201	254	256	259	3	44,0	1,2	20,5
Unemployed	132	109	103	123	145	22	13,0	17,9	9,8
Not economically active	987	933	990	947	912	-35	-75,0	-3,7	-7,6
Northern Cape									
Subsistence farming	12	5	7	8	8		-4,0	0,0	-33,3
Fetching water or collecting wood/dung	74	66	85	97	113	16	39,0	16,5	52,7
Produce other goods for household use	10		1		1		-9,0		-90,0
Construction or major repairs to own or household'	8	1	1		1		-7,0		-87,5
Hunting or fishing for household use	9	1	4	1	8	7	-1,0	700,0	-11,1
Involvement in at least one activity	98	69	91	100	119	19	21,0	19,0	21,4
Employed	17	12	16	17	32	15	15,0	88,2	88,2
Unemployed	19	14	15	26	28	2	9,0	7,7	47,4
Not economically active	61	44	60	57	58	1	-3,0	1,8	-4,9

For all values of 10 000 or lower the sample size is too small for reliable estimates.
Due to rounding, numbers do not necessarily add up to totals.

Table 8: Involvement in non-market activities and labour market status by province (continued)									
	Jul–Sep 2011	Oct–Dec 2011	Jan–Mar 2012	Apr–Jun 2012	Jul–Sep 2012	Qrt-to-Qrt change	Year-on- year change	Qrt-to- Qrt change	Year- on-year change
	Thousand	Thousand	Thousand	Thousand	Thousand	Thousand	Thousand	Percent	Percent
Free State									
Subsistence farming	85	84	118	60	75	15	-10,0	25,0	-11,8
Fetching water or collecting wood/dung	80	21	40	30	38	8	-42,0	26,7	-52,5
Produce other goods for household use	27	3	4	1	3	2	-24,0	200,0	-88,9
Construction or major repairs to own or household'	36	10	7	3	6	3	-30,0	100,0	-83,3
Hunting or fishing for household use	29	8	14	8	6	-2	-23,0	-25,0	-79,3
Involvement in at least one activity	192	106	162	89	114	25	-78,0	28,1	-40,6
Employed	74	48	58	31	39	8	-35,0	25,8	-47,3
Unemployed	34	13	34	19	20	1	-14,0	5,3	-41,2
Not economically active	84	45	70	39	54	15	-30,0	38,5	-35,7
KwaZulu-Natal									
Subsistence farming	685	742	853	640	626	-14	-59	-2,2	-8,6
Fetching water or collecting wood/dung	1 396	1 269	1 350	1 271	1 363	92	-33,0	7,2	-2,4
Produce other goods for household use	106	47	66	41	41	0	-65,0	0,0	-61,3
Construction or major repairs to own or household'	213	133	132	107	85	-22	-128,0	-20,6	-60,1
Hunting or fishing for household use	57	11	10	9	5	-4	-52,0	-44,4	-91,2
Involvement in at least one activity	1 831	1 605	1 754	1 545	1 638	93	-193,0	6,0	-10,5
Employed	459	390	398	343	348	5	-111,0	1,5	-24,2
Unemployed	167	209	236	193	262	69	95,0	35,8	56,9
Not economically active	1 206	1 005	1 121	1 009	1 028	19	-178,0	1,9	-14,8
North West									
Subsistence farming	106	75	76	78	100	22	-6,0	28,2	-5,7
Fetching water or collecting wood/dung	333	232	211	216	299	83	-34,0	38,4	-10,2
Produce other goods for household use	18	1	1	0	3	3	-15,0		-83,3
Construction or major repairs to own or household'	11	1	1		1		-10,0		-90,9
Hunting or fishing for household use	23								
Involvement in at least one activity	425	274	253	253	350	97	-75,0	38,3	-17,6
Employed	85	39	40	45	77	32	-8,0	71,1	-9,4
Unemployed	73	41	46	41	63	22	-10,0	53,7	-13,7
Not economically active	266	193	166	167	211	44	-55,0	26,3	-20,7

For all values of 10 000 or lower the sample size is too small for reliable estimates.
Due to rounding, numbers do not necessarily add up to totals.

Table 8: Involvement in non-market activities and labour market status by province (concluded)

	Jul-Sep 2011	Oct-Dec 2011	Jan-Mar 2012	Apr-Jun 2012	Jul-Sep 2012	Qrt-to-Qrt change	Year-on- year change	Qrt-to- Qrt change	Year- on-year change
	Thousand	Thousand	Thousand	Thousand	Thousand	Thousand	Thousand	Percent	Percent
Gauteng									
Subsistence farming	115	34	10	7	16	9	-99,0	128,6	-86,1
Fetching water or collecting wood/dung	126	41	69	22	65	43	-61,0	195,5	-48,4
Produce other goods for household use	105	60	63	3	12	9	-93,0	300,0	-88,6
Construction or major repairs to own or household'	96	12	16	12	12	0	-84,0	0,0	-87,5
Hunting or fishing for household use	74	3		1	2	1	-72,0	100,0	-97,3
Involvement in at least one activity	435	136	151	38	94	56	-341,0	147,4	-78,4
Employed	220	93	83	17	45	28	-175,0	164,7	-79,5
Unemployed	91	17	20	11	27	16	-64,0	145,5	-70,3
Not economically active	124	26	47	9	21	12	-103,0	133,3	-83,1
Mpumalanga									
Subsistence farming	161	135	158	108	127	19	-34,0	17,6	-21,1
Fetching water or collecting wood/dung	325	257	305	293	316	23	-9,0	7,8	-2,8
Produce other goods for household use	57	24	30	38	31	-7	-26,0	-18,4	-45,6
Construction or major repairs to own or household'	33	14	16	19	19	0	-14,0	0,0	-42,4
Hunting or fishing for household use	15	1	1		1		-14,0		-93,3
Involvement in at least one activity	473	358	409	380	419	39	-54,0	10,3	-11,4
Employed	116	74	93	76	82	6	-34,0	7,9	-29,3
Unemployed	114	88	97	93	110	17	-4,0	18,3	-3,5
Not economically active	243	195	219	211	226	15	-17,0	7,1	-7,0
Limpopo									
Subsistence farming	212	180	302	146	155	9	-57,0	6,2	-26,9
Fetching water or collecting wood/dung	1 181	1 218	1 165	1 053	1 089	36	-92,0	3,4	-7,8
Produce other goods for household use	42	4	2	1	1	0	-41,0	0,0	-97,6
Construction or major repairs to own or household'	48	32	37	31	14	-17	-34,0	-54,8	-70,8
Hunting or fishing for household use	44	9	11	5	5		-39,0	0,0	-88,6
Involvement in at least one activity	1 300	1 306	1 298	1 121	1 167	46	-133,0	4,1	-10,2
Employed	247	257	230	195	226	31	-21,0	15,9	-8,5
Unemployed	99	97	108	98	103	5	4,0	5,1	4,0
Not economically active	954	952	960	828	838	10	-116,0	1,2	-12,2

For all values of 10 000 or lower the sample size is too small for reliable estimates.
Due to rounding, numbers do not necessarily add up to totals.

Appendix 2A: Sampling variability for labour force characteristics by sex						
	Apr–Jun 2012 CV	Jul–Sep 2012 CV	Estimate	Lower 95%	Upper 95%	P-value
Both sexes						
Population 15–64 yrs						
Labour Force	0,5	0,5	397	228	565	0,00
Employed	0,7	0,7	198	46	352	0,01
Formal sector (Non-agricultural)	0,9	1,0	92	-54	238	0,22
Informal sector (Non-agricultural)	2,5	2,3	112	25	200	0,01
Agriculture	6,7	5,8	23	-26	71	0,36
Private households	3,6	3,2	-29	-89	33	0,36
Unemployed	1,8	1,8	197	58	338	0,01
Not economically active	0,7	0,6	-282	-450	-114	0,00
Discouraged work-seekers	3,4	3,1	-141	-260	-23	0,02
Other(not economically active)	0,7	0,7	-140	-299	19	0,08
Rates (%)						
Unemployment rate	1,6	1,6	0,6	-0,1	1,2	0,12
Employed / population ratio (Absorption)	0,7	0,7	0,4	0,0	0,9	0,05
Labour force participation rate	0,5	0,5	1,0	0,5	1,5	0,00
Women						
Population 15-64 yrs						
Labour Force	0,8	0,8	172	63	281	0,00
Employed	1,0	1,0	68	-31	166	0,18
Formal sector (Non-agricultural)	1,4	1,5	30	-59	118	0,52
Informal sector (Non-agricultural)	3,2	3,2	49	1	98	0,05
Agriculture	9,1	8,6	20	-4	46	0,11
Private households	3,5	3,3	-32	-82	18	0,21
Unemployed	2,2	2,2	104	11	198	0,03
Not economically active	0,7	0,8	-122	-232	-13	0,03
Discouraged work-seekers	3,6	3,4	-112	-194	-30	0,01
Other(not economically active)	0,8	0,9	-11	-123	103	0,86
Rates (%)						
Unemployment rate	2,0	1,9	0,7	-0,3	1,7	0,17
Employed / population ratio (Absorption)	1,0	1,0	0,3	-0,3	0,9	0,32
Labour force participation rate	0,8	0,8	0,9	0,2	1,5	0,01

Appendix 2A: Sampling variability for labour force characteristics by sex (concluded)						
	Apr-Jun 2012 CV	Jul-Sep 2012 CV	Estimate	Lower 95%	Upper 95%	P-value
Men						
Population 15-64 yrs						
Labour Force	0,6	0,5	225	115	334	0,00
Employed	0,9	0,8	132	26	236	0,01
Formal sector (Non-agricultural)	1,2	1,1	62	-43	167	0,24
Informal sector (Non-agricultural)	3,2	2,9	63	-9	135	0,09
Agriculture	6,7	5,9	2	-37	41	0,91
Private households	7,2	6,5	4	-28	35	0,82
Unemployed	2,1	2,3	93	-1	188	0,05
Not economically active	1,0	0,9	-159	-269	-50	0,00
Discouraged work-seekers	4,5	3,8	-30	-105	46	0,44
Other(not economically active)	1,0	0,9	-129	-227	-33	0,01
Rates (%)						
Unemployment rate	2,0	2,2	0,5	-0,4	1,3	0,33
Employed / population ratio (Absorption)	0,9	0,8	0,7	0,0	1,3	0,06
Labour force participation rate	0,6	0,5	1,2	0,5	1,8	0,00

Appendix 2.1A: Sampling variability for labour force characteristics by population group						
	Apr–Jun 2012 CV	Jul–Sep 2012 CV	Estimate	Lower 95%	Upper 95%	P-value
South Africa						
Population 15–64 yrs						
Labour Force	0,5	0,5	397	228	565	0,00
Employed	0,7	0,7	198	46	352	0,01
Unemployed	1,8	1,8	197	58	338	0,01
Not economically active	0,7	0,6	-282	-450	-114	0,00
Rates (%)						
Unemployment rate	1,6	1,6	0,6	-0,1	1,2	0,12
Employed / population ratio (Absorption)	0,7	0,7	0,4	0,0	0,9	0,05
Labour force participation rate	0,5	0,5	1,0	0,5	1,5	0,00
Black/African						
Population 15–64 yrs						
Labour Force	0,7	0,6	331	184	477	0,00
Employed	0,9	0,9	175	48	301	0,01
Unemployed	2,0	2,0	156	26	286	0,02
Not economically active	0,7	0,7	-219	-365	-73	0,00
Rates (%)						
Unemployment rate	1,8	1,8	0,4	-0,4	1,3	0,28
Employed / population ratio (Absorption)	0,9	0,9	0,6	0,0	1,0	0,04
Labour force participation rate	0,7	0,6	1,1	0,5	1,6	0,00
Coloured						
Population 15–64 yrs						
Labour Force	1,2	1,2	43	-2	87	0,06
Employed	1,5	1,6	21	-27	69	0,40
Unemployed	4,3	4,3	21	-20	63	0,30
Not economically active	2,0	2,1	-35	-78	10	0,13
Rates (%)						
Unemployment rate	3,9	4,0	0,5	-1,4	2,6	0,56
Employed / population ratio (Absorption)	1,5	1,6	0,5	-1,0	2,1	0,49
Labour force participation rate	1,2	1,2	1,2	-0,2	2,7	0,10

Appendix 2.1A: Sampling variability for labour force characteristics by population group (concluded)						
	Apr-Jun 2012 CV	Jul-Sep 2012 CV	Estimate	Lower 95%	Upper 95%	P-value
Indian/Asian						
Population 15–64 yrs						
Labour Force	2,4	2,1	27	0	53	0,05
Employed	2,8	2,4	12	-15	38	0,38
Unemployed	14,8	12,7	15	-1	30	0,06
Not economically active	3,1	3,0	-22	-49	4	0,10
Rates (%)						
Unemployment rate	14,6	12,1	2,2	-0,6	4,9	0,12
Employed / population ratio (Absorption)	2,8	2,4	1,0	-1,8	3,8	0,47
Labour force participation rate	2,4	2,1	2,6	-0,3	5,3	0,08
White						
Population 15–64 yrs						
Labour Force	1,2	1,4	-2	-52	46	0,91
Employed	1,4	1,5	-8	-53	36	0,72
Unemployed	11,2	11,2	5	-23	35	0,71
Not economically active	2,5	2,9	-6	-55	43	0,81
Rates (%)						
Unemployment rate	11,1	11,0	0,2	-1,1	1,6	0,69
Employed / population ratio (Absorption)	1,4	1,5	-0,1	-1,6	1,4	0,91
Labour force participation rate	1,2	1,4	0,0	-1,5	1,7	0,90

Appendix 2.2A: Sampling variability for labour force characteristics by province						
	Apr–Jun 2012 CV	Jul–Sep 2012 CV	Estimate	Lower 95%	Upper 95%	P-value
South Africa						
Population 15–64 yrs						
Labour Force	0,5	0,5	397	228	565	0,00
Employed	0,7	0,7	198	46	352	0,01
Unemployed	1,8	1,8	197	58	338	0,01
Not economically active	0,7	0,6	-282	-450	-114	0,00
Discouraged work-seekers	3,4	3,1	-141	-260	-23	0,02
Other	0,7	0,7	-140	-299	19	0,08
Rates (%)						
Unemployment rate	1,6	1,6	0,6	-0,1	1,2	0,12
Employed / population ratio (Absorption)	0,7	0,7	0,4	0,0	0,9	0,05
Labour force participation rate	0,5	0,5	1,0	0,5	1,5	0,00
Western Cape						
Population 15–64 yrs						
Labour Force	1,0	0,9	58	6	110	0,03
Employed	1,8	1,6	-9	-72	52	0,76
Unemployed	3,7	3,9	67	16	119	0,01
Not economically active	2,1	1,9	-45	-96	8	0,10
Discouraged work-seekers	17,2	21,0	-2	-17	14	0,88
Other	2,1	2,0	-43	-95	9	0,10
Rates (%)						
Unemployment rate	3,9	3,9	2,2	0,2	4,3	0,03
Employed / population ratio (Absorption)	1,8	1,6	-0,5	-2,3	1,3	0,59
Labour force participation rate	1,0	0,9	1,4	-0,1	2,9	0,07

Appendix 2.2A: Sampling variability for labour force characteristics by province (continued)						
	Apr–Jun 2012 CV	Jul–Sep 2012 CV	Estimate	Lower 95%	Upper 95%	P-value
Eastern Cape						
Population 15–64 yrs						
Labour Force	2,5	2,3	51	-21	122	0,17
Employed	3,0	2,6	32	-30	96	0,31
Unemployed	5,5	4,7	18	-30	66	0,46
Not economically active	1,9	1,8	-40	-112	32	0,27
Discouraged work-seekers	6,8	7,2	13	-43	69	0,65
Other	1,9	2,0	-53	-116	10	0,10
Rates (%)						
Unemployment rate	4,7	3,9	0,2	-2,1	2,5	0,87
Employed / population ratio (Absorption)	3,0	2,6	0,7	-0,8	2,2	0,36
Labour force participation rate	2,5	2,3	1,0	-0,6	2,8	0,21
Northern Cape						
Population 15–64 yrs						
Labour Force	2,0	2,1	13	-5	32	0,15
Employed	2,9	2,9	9	-11	31	0,37
Unemployed	5,2	4,0	4	-12	20	0,63
Not economically active	2,4	2,7	-12	-30	7	0,23
Discouraged work-seekers	10,6	13,2	0	-7	7	0,97
Other	2,8	2,6	-11	-29	6	0,21
Rates (%)						
Unemployment rate	4,8	3,8	0,1	-3,9	3,8	0,99
Employed / population ratio (Absorption)	2,9	2,9	1,0	-1,7	4,1	0,41
Labour force participation rate	2,0	2,1	1,5	-0,9	4,3	0,19

Appendix 2.2A: Sampling variability for labour force characteristics by province (continued)						
	Apr–Jun 2012 CV	Jul–Sep 2012 CV	Estimate	Lower 95%	Upper 95%	P-value
Free State						
Population 15–64 yrs						
Labour Force	1,6	1,5	-4	-33	26	0,82
Employed	2,1	2,2	8	-16	32	0,53
Unemployed	3,1	3,9	-11	-38	16	0,41
Not economically active	2,2	2,1	7	-23	37	0,64
Discouraged work-seekers	10,7	8,8	5	-13	23	0,58
Other	2,7	2,2	2	-31	35	0,91
Rates (%)						
Unemployment rate	2,7	3,5	-0,9	-3,0	1,1	0,37
Employed / population ratio (Absorption)	2,1	2,2	0,4	-0,9	1,6	0,60
Labour force participation rate	1,6	1,5	-0,3	-1,9	1,3	0,72
KwaZulu-Natal						
Population 15–64 yrs						
Labour Force	2,0	1,7	75	-8	158	0,08
Employed	2,3	2,2	13	-54	80	0,70
Unemployed	5,1	5,5	62	4	120	0,04
Not economically active	1,7	1,5	-49	-132	34	0,25
Discouraged work-seekers	7,5	7,4	-15	-61	32	0,54
Other	1,8	1,7	-35	-122	53	0,44
Rates (%)						
Unemployment rate	4,7	5,1	1,5	-0,1	3,0	0,06
Employed / population ratio (Absorption)	2,3	2,2	0,0	-0,9	1,0	0,92
Labour force participation rate	2,0	1,7	1,0	-0,3	2,1	0,14

Appendix 2.2A: Sampling variability for labour force characteristics by province (continued)						
	Apr–Jun 2012 CV	Jul–Sep 2012 CV	Estimate	Lower 95%	Upper 95%	P-value
North West						
Population 15–64 yrs						
Labour Force	2,7	2,6	33	-14	81	0,17
Employed	3,0	2,4	36	6	66	0,02
Unemployed	6,8	7,5	-4	-34	28	0,84
Not economically active	2,4	2,4	-27	-75	20	0,26
Discouraged work-seekers	6,8	7,9	-60	-105	-15	0,01
Other	2,6	2,7	33	-17	82	0,20
Rates (%)						
Unemployment rate	5,6	5,9	-1,2	-3,5	1,1	0,31
Employed / population ratio (Absorption)	3,0	2,4	1,6	0,2	3,1	0,03
Labour force participation rate	2,7	2,6	1,4	-0,8	3,8	0,21
Gauteng						
Population 15–64 yrs						
Labour Force	0,9	1,0	49	-58	154	0,37
Employed	1,3	1,5	69	-31	168	0,18
Unemployed	3,8	3,8	-20	-109	69	0,65
Not economically active	2,2	2,4	-21	-127	85	0,69
Discouraged work-seekers	13,8	11,7	-25	-76	27	0,34
Other	2,1	2,5	4	-95	102	0,95
Rates (%)						
Unemployment rate	3,4	3,6	-0,6	-2,0	0,8	0,42
Employed / population ratio (Absorption)	1,3	1,5	0,7	-0,6	1,9	0,28
Labour force participation rate	0,9	1,0	0,4	-1,0	1,7	0,59

Appendix 2.2A: Sampling variability for labour force characteristics by province (concluded)						
	Apr–Jun 2012 CV	Jul–Sep 2012 CV	Estimate	Lower 95%	Upper 95%	P-value
Mpumalanga						
Population 15–64 yrs						
Labour Force	1,9	2,2	4	-34	42	0,84
Employed	2,5	2,2	-25	-61	10	0,16
Unemployed	6,6	6,9	30	0	59	0,05
Not economically active	2,4	2,9	6	-32	44	0,76
Discouraged work-seekers	6,8	8,0	14	-12	40	0,30
Other	2,5	2,8	-7	-36	21	0,59
Rates (%)						
Unemployment rate	5,8	5,4	2,2	0,2	4,0	0,03
Employed / population ratio (Absorption)	2,5	2,2	-1,2	-2,7	0,3	0,11
Labour force participation rate	1,9	2,2	-0,1	-1,7	1,6	0,93
Limpopo						
Population 15–64 yrs						
Labour Force	3,4	2,7	118	52	183	0,00
Employed	3,9	3,3	66	13	118	0,02
Unemployed	6,4	6,1	52	18	86	0,00
Not economically active	2,0	1,9	-101	-167	-36	0,00
Discouraged work-seekers	8,4	5,6	-73	-127	-19	0,01
Other	2,8	2,2	-29	-89	32	0,35
Rates (%)						
Unemployment rate	5,9	5,7	2,0	0,0	4,1	0,06
Employed / population ratio (Absorption)	3,9	3,3	1,8	0,2	3,3	0,02
Labour force participation rate	3,4	2,7	3,3	1,3	5,2	0,00

Appendix 3.1A: Sampling variability for the employed by industry and sex

	Apr–Jun 2012 CV	Jul–Sep 2012 CV	Estimate	Lower 95%	Upper 95%	P-value
Both sexes	0,7	0,7	198	46	352	0,01
Agriculture	6,7	5,8	23	-26	71	0,36
Mining	6,6	7,3	-8	-45	29	0,67
Manufacturing	2,9	2,8	49	-27	124	0,21
Utilities	9,9	10,0	7	-12	25	0,50
Construction	3,3	3,2	34	-31	100	0,30
Trade	2,1	2,2	-4	-116	108	0,94
Transport	4,0	4,3	43	-17	103	0,16
Finance	2,9	3,0	74	-19	167	0,12
Community and social services	1,8	2,1	13	-96	124	0,81
Private households	3,6	3,2	-29	-89	33	0,36
Women	1,0	1,0	68	-31	166	0,18
Agriculture	9,1	8,6	20	-4	46	0,11
Mining	13,3	13,0	-5	-15	6	0,39
Manufacturing	4,7	4,8	45	-1	91	0,06
Utilities	26,0	20,7	8	-2	18	0,11
Construction	9,1	9,9	7	-14	28	0,52
Trade	2,6	2,8	7	-60	73	0,85
Transport	7,3	9,8	10	-18	40	0,47
Finance	4,3	4,3	-5	-65	55	0,87
Community and social services	2,1	2,3	13	-60	86	0,73
Private households	3,5	3,3	-32	-82	18	0,21
Men	0,9	0,8	132	26	236	0,01
Agriculture	6,7	5,9	2	-37	41	0,91
Mining	6,7	7,8	-4	-39	32	0,85
Manufacturing	3,4	3,1	4	-63	70	0,91
Utilities	11,0	10,1	-2	-18	15	0,86
Construction	3,4	3,3	27	-34	89	0,38
Trade	3,0	2,9	-10	-95	74	0,81
Transport	4,5	4,5	33	-17	82	0,20
Finance	3,7	3,4	79	14	146	0,02
Community and social services	2,8	3,1	0	-66	67	0,99
Private households	7,2	6,5	4	-28	35	0,82

Appendix 3.4A: Sampling variability for the employed by province and sector						
	Apr–Jun 2012 CV	Jul–Sep 2012 CV	Estimate	Lower 95%	Upper 95%	P-value
South Africa	0,7	0,7	198	46	352	0,01
Formal sector (Non-agricultural)	0,9	1,0	92	-54	238	0,22
Informal sector (Non-agricultural)	2,5	2,3	112	25	200	0,01
Agriculture	6,7	5,8	23	-26	71	0,36
Private households	3,6	3,2	-29	-89	33	0,36
Western Cape	1,8	1,6	-9	-72	52	0,76
Formal sector (Non-agricultural)	2,3	2,2	-35	-97	27	0,26
Informal sector (Non-agricultural)	10,2	8,0	1	-24	27	0,88
Agriculture	16,4	10,8	21	0	42	0,06
Private households	8,8	8,3	2	-14	18	0,77
Eastern Cape	3,0	2,6	32	-30	96	0,31
Formal sector (Non-agricultural)	4,2	3,7	-9	-63	46	0,75
Informal sector (Non-agricultural)	7,6	6,9	40	12	67	0,01
Agriculture	18,7	21,3	-0	-9	8	0,87
Private households	11,6	10,5	3	-17	22	0,79
Northern Cape	2,9	2,9	9	-11	31	0,37
Formal sector (Non-agricultural)	4,8	4,1	-3	-23	19	0,83
Informal sector (Non-agricultural)	10,7	8,8	7	0	15	0,04
Agriculture	10,4	6,6	2	-8	13	0,67
Private households	15,1	18,3	3	-4	9	0,51
Free State	2,1	2,2	8	-16	32	0,53
Formal sector (Non-agricultural)	2,9	3,1	-10	-32	13	0,39
Informal sector (Non-agricultural)	8,1	7,3	6	-9	21	0,41
Agriculture	16,3	18,9	12	-2	27	0,09
Private households	9,7	7,4	-1	-14	12	0,90
KwaZulu-Natal	2,3	2,2	13	-54	80	0,70
Formal sector (Non-agricultural)	3,0	2,9	57	-9	122	0,09
Informal sector (Non-agricultural)	5,6	5,3	-35	-81	11	0,14
Agriculture	20,0	19,6	-2	-16	11	0,72
Private households	8,8	7,3	-7	-36	23	0,67

Appendix 3.4A: Sampling variability for the employed by province and sector (concluded)						
	Apr–Jun 2012 CV	Jul–Sep 2012 CV	Estimate	Lower 95%	Upper 95%	P-value
North West	3,0	2,4	36	6	66	0,02
Formal sector (Non-agricultural)	3,4	3,1	30	-3	63	0,08
Informal sector (Non-agricultural)	6,5	8,3	0	-14	15	0,97
Agriculture	18,7	20,8	-3	-10	5	0,54
Private households	9,8	10,3	9	-3	20	0,13
Gauteng	1,3	1,5	69	-31	168	0,18
Formal sector (Non-agricultural)	1,8	2,1	74	-19	167	0,12
Informal sector (Non-agricultural)	4,9	4,8	69	17	119	0,01
Agriculture	32,4	26,6	-20	-46	6	0,12
Private households	8,1	8,3	-53	-89	-18	0,00
Mpumalanga	2,5	2,2	-25	-61	10	0,16
Formal sector (Non-agricultural)	3,8	3,0	-14	-51	23	0,45
Informal sector (Non-agricultural)	9,1	6,9	-15	-37	6	0,17
Agriculture	8,9	11,1	2	-17	21	0,80
Private households	8,1	10,4	2	-13	16	0,81
Limpopo	3,9	3,3	66	13	118	0,02
Formal sector (Non-agricultural)	5,0	4,1	2	-34	38	0,91
Informal sector (Non-agricultural)	7,3	6,3	38	11	66	0,01
Agriculture	19,9	16,9	10	-6	27	0,22
Private households	10,1	7,6	15	-4	33	0,13

Appendix 3.5A: Sampling variability for the employed by sex and occupation						
	Apr–Jun 2012 CV	Jul–Sep 2012 CV	Estimate	Lower 95%	Upper 95%	P-value
Both sexes	0,7	0,7	198	46	352	0,01
Manager	3,5	3,8	73	-1	145	0,05
Professional	4,8	4,1	-18	-85	49	0,60
Technician	2,5	2,9	-54	-132	24	0,18
Clerk	2,9	2,9	-16	-86	54	0,66
Sales and services	2,6	2,6	106	14	196	0,02
Skilled agriculture	11,2	14,1	0	-16	18	0,94
Craft and related trade	2,9	2,5	81	4	158	0,04
Plant and machine operator	3,1	3,2	39	-33	113	0,29
Elementary	2,0	2,0	25	-77	127	0,63
Domestic worker	3,6	3,3	-37	-90	15	0,16
Women	1,0	1,0	68	-31	166	0,18
Manager	5,6	5,7	9	-30	48	0,67
Professional	6,6	6,4	-27	-76	21	0,26
Technician	3,0	3,3	17	-38	73	0,54
Clerk	3,1	3,4	-17	-74	39	0,54
Sales and services	3,4	3,2	74	22	127	0,01
Skilled agriculture	20,7	23,8	5	-6	16	0,39
Craft and related trade	7,6	7,0	14	-7	35	0,19
Plant and machine operator	7,7	9,2	7	-19	33	0,60
Elementary	2,6	2,7	23	-39	87	0,46
Domestic worker	3,6	3,3	-37	-87	14	0,15
Men	0,9	0,8	132	26	236	0,01
Manager	3,9	4,3	64	11	116	0,02
Professional	5,0	5,0	9	-29	48	0,62
Technician	3,7	4,1	-72	-120	-23	0,00
Clerk	5,3	5,1	1	-43	46	0,94
Sales and services	3,6	3,7	31	-35	97	0,36
Skilled agriculture	13,4	16,1	-4	-16	8	0,50
Craft and related trade	3,0	2,6	67	-8	143	0,08
Plant and machine operator	3,2	3,3	33	-33	98	0,32
Elementary	2,7	2,5	1	-83	86	0,98
Domestic worker	21,0	16,9	0	-15	14	0,92

Appendix 2B: Sampling variability for labour force characteristics by sex						
	Jul-Sep 2011 CV	Jul-Sep 2012 CV	Estimate	Lower 95%	Upper 95%	P-Value
Both sexes						
Population 15–64 yrs						
Labour Force	0,5	0,5	552	323	781	0,00
Employed	0,7	0,7	327	87	567	0,01
Formal sector (Non-agricultural)	1,0	1,0	227	0	452	0,05
Informal sector (Non-agricultural)	2,4	2,3	37	-92	167	0,57
Agriculture	6,2	5,8	37	-30	104	0,28
Private households	3,1	3,2	26	-67	119	0,58
Unemployed	1,8	1,8	225	27	423	0,03
Not economically active	0,6	0,6	-90	-318	139	0,44
Discouraged work-seekers	3,1	3,1	-34	-192	124	0,68
Other(not economically active)	0,6	0,7	-56	-265	154	0,60
Rates (%)						
Unemployment rate	1,6	1,6	0,5	-0,6	1,5	0,36
Employed / population ratio (Absorption)	0,7	0,7	0,4	-0,3	1,2	0,26
Labour force participation rate	0,5	0,5	0,9	0,2	1,6	0,01
Women						
Population 15–64 yrs						
Labour Force	0,8	0,8	207	45	369	0,01
Employed	1,0	1,0	133	-23	288	0,10
Formal sector (Non-agricultural)	1,3	1,5	119	-22	259	0,10
Informal sector (Non-agricultural)	3,3	3,2	0	-75	76	0,99
Agriculture	8,5	8,6	16	-23	56	0,41
Private households	3,3	3,3	-3	-79	72	0,94
Unemployed	2,2	2,2	74	-57	205	0,27
Not economically active	0,7	0,8	-6	-168	155	0,94
Discouraged work-seekers	3,4	3,4	-27	-132	79	0,62
Other(not economically active)	0,8	0,9	20	-137	178	0,80
Rates (%)						
Unemployment rate	2,0	1,9	0,2	-1,2	1,6	0,79
Employed / population ratio (Absorption)	1,0	1,0	0,3	-0,6	1,3	0,43
Labour force participation rate	0,8	0,8	0,6	-0,3	1,6	0,18

Appendix 2B: Sampling variability for labour force characteristics by sex (concluded)						
	Jul-Sep 2011 CV	Jul-Sep 2012 CV	Estimate	Lower 95%	Upper 95%	P-Value
Men						
Population 15–64 yrs						
Labour Force	0,6	0,5	345	209	482	0,00
Employed	0,9	0,8	195	34	355	0,02
Formal sector (Non-agricultural)	1,2	1,1	108	-51	267	0,18
Informal sector (Non-agricultural)	3,2	2,9	37	-64	138	0,47
Agriculture	6,7	5,9	21	-34	76	0,46
Private households	6,3	6,5	29	-14	72	0,19
Unemployed	2,2	2,3	151	24	278	0,02
Not economically active	1,0	0,9	-83	-219	53	0,23
Discouraged work-seekers	4,3	3,8	-7	-104	91	0,89
Other(not economically active)	1,0	0,9	-76	-197	45	0,22
Rates (%)						
Unemployment rate	2,2	2,2	0,7	-0,5	2,0	0,25
Employed / population ratio (Absorption)	0,9	0,8	0,4	-0,6	1,4	0,40
Labour force participation rate	0,6	0,5	1,2	0,3	2,0	0,01

Appendix 2.1B: Sampling variability for labour force characteristics by population group						
	Jul-Sep 2011 CV	Jul-Sep 2012 CV	Estimate	Lower 95%	Upper 95%	P-Value
South Africa						
Population 15–64 yrs						
Labour Force	0,5	0,5	552	323	781	0,00
Employed	0,7	0,7	327	87	567	0,01
Unemployed	1,8	1,8	225	27	423	0,03
Not economically active	0,6	0,6	-90	-318	139	0,44
Rates (%)						
Unemployment rate	1,6	1,6	0,5	-0,6	1,5	0,36
Employed / population ratio (Absorption)	0,7	0,7	0,4	-0,3	1,2	0,26
Labour force participation rate	0,5	0,5	0,9	0,2	1,6	0,01
Black/African						
Population 15–64 yrs						
Labour Force	0,7	0,6	549	343	754	0,00
Employed	0,9	0,9	358	146	569	0,00
Unemployed	2,0	2,0	191	3	378	0,05
Not economically active	0,7	0,7	-101	-306	105	0,34
Rates (%)						
Unemployment rate	1,8	1,8	0,2	-1,0	1,5	0,72
Employed / population ratio (Absorption)	0,9	0,9	0,8	-0,1	1,6	0,08
Labour force participation rate	0,7	0,6	1,3	0,4	2,0	0,00
Coloured						
Population 15–64 yrs						
Labour Force	1,0	1,2	22	-32	76	0,43
Employed	1,5	1,6	-1	-58	56	0,97
Unemployed	5,2	4,3	22	-34	80	0,43
Not economically active	1,8	2,1	11	-43	65	0,68
Rates (%)						
Unemployment rate	4,7	4,0	0,9	-1,8	3,5	0,51
Employed / population ratio (Absorption)	1,5	1,6	-0,6	-2,4	1,3	0,55
Labour force participation rate	1,0	1,2	-0,1	-1,8	1,8	0,99

Appendix 2.1B: Sampling variability for labour force characteristics by population group (concluded)						
	Jul-Sep 2011 CV	Jul-Sep 2012 CV	Estimate	Lower 95%	Upper 95%	P-Value
Indian/Asian						
Population 15–64 yrs						
Labour Force	2,8	2,1	28	-11	65	0,16
Employed	3,6	2,4	20	-16	56	0,27
Unemployed	18,1	12,7	8	-16	30	0,54
Not economically active	3,7	3,0	-11	-49	27	0,57
Rates (%)						
Unemployment rate	17,9	12,1	0,9	-3,3	4,9	0,71
Employed / population ratio (Absorption)	3,6	2,4	1,2	-2,6	5,1	0,52
Labour force participation rate	2,8	2,1	1,9	-2,2	6,0	0,36
White						
Population 15–64 yrs						
Labour Force	1,1	1,4	-45	-120	29	0,23
Employed	1,3	1,5	-50	-122	22	0,17
Unemployed	12,1	11,2	4	-30	39	0,80
Not economically active	2,4	2,9	11	-63	85	0,77
Rates (%)						
Unemployment rate	12,0	11,0	0,3	-1,3	2,0	0,68
Employed / population ratio (Absorption)	1,3	1,5	-1,0	-3,3	1,4	0,45
Labour force participation rate	1,1	1,4	-0,8	-3,1	1,7	0,56

Appendix 2.2B: Sampling variability for labour force characteristics by province						
	Jul-Sep 2011 CV	Jul-Sep 2012 CV	Estimate	Lower 95%	Upper 95%	P-Value
South Africa						
Population 15–64 yrs						
Labour Force	0,5	0,5	552	323	781	0,00
Employed	0,7	0,7	327	87	567	0,01
Unemployed	1,8	1,8	225	27	423	0,03
Not economically active	0,6	0,6	-90	-318	139	0,44
Discouraged work-seekers	3,1	3,1	-34	-192	124	0,68
Other	0,6	0,7	-56	-265	154	0,60
Rates (%)						
Unemployment rate	1,6	1,6	0,5	-0,6	1,5	0,36
Employed / population ratio (Absorption)	0,7	0,7	0,4	-0,3	1,2	0,26
Labour force participation rate	0,5	0,5	0,9	0,2	1,6	0,01
Western Cape						
Population 15–64 yrs						
Labour Force	0,9	0,9	65	2	127	0,04
Employed	1,5	1,6	0	-77	76	0,99
Unemployed	4,5	3,9	65	-2	132	0,06
Not economically active	2,0	1,9	-11	-73	51	0,73
Discouraged work-seekers	29,0	21,0	-1	-12	10	0,86
Other	2,2	2,0	-10	-70	51	0,75
Rates (%)						
Unemployment rate	4,3	3,9	2,1	-0,6	4,8	0,13
Employed / population ratio (Absorption)	1,5	1,6	-0,8	-3,0	1,4	0,47
Labour force participation rate	0,9	0,9	0,8	-1,0	2,6	0,38

Appendix 2.2B: Sampling variability for labour force characteristics by province (continued)						
	Jul-Sep 2011 CV	Jul-Sep 2012 CV	Estimate	Lower 95%	Upper 95%	P-Value
Eastern Cape						
Population 15–64 yrs						
Labour Force	2,5	2,3	89	-24	202	0,12
Employed	2,4	2,6	32	-59	125	0,48
Unemployed	7,1	4,7	56	-23	135	0,16
Not economically active	1,8	1,8	-43	-156	70	0,45
Discouraged work-seekers	10,0	7,2	8	-87	104	0,86
Other	1,9	2,0	-52	-149	46	0,30
Rates (%)						
Unemployment rate	5,6	3,9	1,7	-1,9	5,4	0,36
Employed / population ratio (Absorption)	2,4	2,6	0,4	-1,8	2,6	0,69
Labour force participation rate	2,5	2,3	1,6	-1,0	4,3	0,23
Northern Cape						
Population 15–64 yrs						
Labour Force	2,2	2,1	27	2	53	0,04
Employed	2,4	2,9	12	-10	34	0,29
Unemployed	7,8	4,0	15	-4	35	0,12
Not economically active	2,5	2,7	-19	-44	7	0,16
Discouraged work-seekers	10,1	13,2	-4	-15	8	0,53
Other	2,8	2,6	-15	-37	7	0,18
Rates (%)						
Unemployment rate	6,5	3,8	1,8	-2,3	6,1	0,39
Employed / population ratio (Absorption)	2,4	2,9	1,1	-1,9	4,2	0,45
Labour force participation rate	2,2	2,1	3,0	-0,4	6,6	0,09

Appendix 2.2B: Sampling variability for labour force characteristics by province (continued)						
	Jul-Sep 2011 CV	Jul-Sep 2012 CV	Estimate	Lower 95%	Upper 95%	P-Value
Free State						
Population 15-64 yrs						
Labour Force	2,6	1,5	-28	-86	31	0,36
Employed	3,9	2,2	-90	-152	-30	0,00
Unemployed	6,5	3,9	63	28	98	0,00
Not economically active	3,8	2,1	41	-17	101	0,16
Discouraged work-seekers	15,1	8,8	-17	-49	15	0,29
Other	3,4	2,2	59	16	102	0,01
Rates (%)						
Unemployment rate	6,7	3,5	6,5	3,4	9,6	0,00
Employed / population ratio (Absorption)	3,9	2,2	-5,1	-8,4	-1,9	0,00
Labour force participation rate	2,6	1,5	-1,9	-5,0	1,2	0,23
KwaZulu-Natal						
Population 15-64 yrs						
Labour Force	1,4	1,7	115	11	219	0,03
Employed	1,5	2,2	23	-97	143	0,70
Unemployed	6,2	5,5	92	4	179	0,04
Not economically active	1,2	1,5	-9	-114	95	0,86
Discouraged work-seekers	5,3	7,4	21	-67	111	0,63
Other	1,6	1,7	-32	-150	87	0,60
Rates (%)						
Unemployment rate	5,5	5,1	2,2	-0,6	4,9	0,12
Employed / population ratio (Absorption)	1,5	2,2	-0,2	-2,0	1,5	0,80
Labour force participation rate	1,4	1,7	1,0	-0,6	2,5	0,21

Appendix 2.2B: Sampling variability for labour force characteristics by province (continued)						
	Jul-Sep 2011 CV	Jul-Sep 2012 CV	Estimate	Lower 95%	Upper 95%	P-Value
North West						
Population 15-64 yrs						
Labour Force	2,9	2,6	42	-16	99	0,15
Employed	3,2	2,4	65	18	111	0,01
Unemployed	6,1	7,5	-24	-65	18	0,27
Not economically active	2,5	2,4	-17	-75	40	0,55
Discouraged work-seekers	7,3	7,9	-44	-85	-2	0,04
Other	3,0	2,7	27	-28	81	0,34
Rates (%)						
Unemployment rate	4,8	5,9	-3,6	-7,1	0,0	0,05
Employed / population ratio (Absorption)	3,2	2,4	2,7	0,5	5,0	0,02
Labour force participation rate	2,9	2,6	1,4	-1,3	4,3	0,30
Gauteng						
Population 15-64 yrs						
Labour Force	1,0	1,0	59	-72	190	0,38
Employed	1,3	1,5	211	72	349	0,00
Unemployed	3,1	3,8	-151	-266	-37	0,01
Not economically active	2,4	2,4	46	-85	177	0,49
Discouraged work-seekers	14,1	11,7	24	-25	72	0,34
Other	2,1	2,5	23	-103	148	0,73
Rates (%)						
Unemployment rate	2,7	3,6	-3,0	-4,9	-1,1	0,00
Employed / population ratio (Absorption)	1,3	1,5	2,0	0,2	3,7	0,03
Labour force participation rate	1,0	1,0	-0,1	-1,9	1,5	0,82

Appendix 2.2B: Sampling variability for labour force characteristics by province (concluded)						
	Jul-Sep 2011 CV	Jul-Sep 2012 CV	Estimate	Lower 95%	Upper 95%	P-Value
Mpumalanga						
Population 15-64 yrs						
Labour Force	1,7	2,2	60	-8	130	0,09
Employed	2,3	2,2	17	-39	74	0,55
Unemployed	5,5	6,9	44	-8	95	0,10
Not economically active	2,0	2,9	-20	-89	49	0,56
Discouraged work-seekers	8,4	8,0	30	-10	72	0,14
Other	2,6	2,8	-51	-114	12	0,11
Rates (%)						
Unemployment rate	4,9	5,4	2,0	-1,3	5,2	0,24
Employed / population ratio (Absorption)	2,3	2,2	0,1	-2,3	2,5	0,96
Labour force participation rate	1,7	2,2	1,6	-1,3	4,5	0,28
Limpopo						
Population 15-64 yrs						
Labour Force	2,8	2,7	123	33	213	0,01
Employed	3,4	3,3	58	-33	149	0,21
Unemployed	7,2	6,1	64	19	110	0,01
Not economically active	1,7	1,9	-57	-148	32	0,21
Discouraged work-seekers	4,2	5,6	-53	-89	-17	0,00
Other	2,0	2,2	-5	-82	73	0,90
Rates (%)						
Unemployment rate	6,9	5,7	2,9	-0,4	6,3	0,09
Employed / population ratio (Absorption)	3,4	3,3	1,1	-1,6	3,8	0,42
Labour force participation rate	2,8	2,7	2,9	0,2	5,5	0,03

Appendix 3.1B: Sampling variability for the employed by industry and sex						
	Jul-Sep 2011 CV	Jul-Sep 2012 CV	Estimate	Lower 95%	Upper 95%	P-Value
Both sexes	0,7	0,7	327	87	567	0,01
Agriculture	6,2	5,8	37	-30	104	0,28
Mining	7,5	7,3	25	-25	76	0,32
Manufacturing	3,1	2,8	-10	-142	123	0,89
Utilities	11,8	10,0	32	5	57	0,02
Construction	5,1	3,2	-40	-161	80	0,51
Trade	2,1	2,2	-50	-232	131	0,59
Transport	3,7	4,3	78	-6	162	0,07
Finance	2,3	3,0	43	-80	166	0,49
Community and social services	2,2	2,1	189	25	353	0,02
Private households	3,1	3,2	26	-67	119	0,58
Women	1,0	1,0	133	-23	288	0,10
Agriculture	8,5	8,6	16	-23	56	0,41
Mining	19,6	13,0	16	0	31	0,04
Manufacturing	4,7	4,8	-19	-91	53	0,60
Utilities	25,7	20,7	14	1	26	0,03
Construction	7,5	9,9	15	-13	43	0,29
Trade	2,6	2,8	-16	-122	90	0,77
Transport	8,9	9,8	25	-15	66	0,21
Finance	3,5	4,3	-42	-123	40	0,32
Community and social services	2,4	2,3	126	17	235	0,02
Private households	3,3	3,3	-3	-79	72	0,94
Men	0,9	0,8	195	34	355	0,02
Agriculture	6,7	5,9	21	-34	76	0,46
Mining	7,8	7,8	10	-36	57	0,67
Manufacturing	3,3	3,1	10	-86	105	0,84
Utilities	12,2	10,1	18	-3	38	0,09
Construction	5,6	3,3	-56	-172	61	0,35
Trade	3,2	2,9	-35	-173	104	0,62
Transport	4,0	4,5	53	-18	123	0,15
Finance	3,2	3,4	85	-3	173	0,06
Community and social services	3,1	3,1	63	-35	161	0,21
Private households	6,3	6,5	29	-14	72	0,19

Appendix 3.4B: Sampling variability for the employed by province and sector						
	Jul-Sep 2011 CV	Jul-Sep 2012 CV	Estimate	Lower 95%	Upper 95%	P-Value
South Africa	0,7	0,7	327	87	567	0,01
Formal sector (Non-agricultural)	1,0	1,0	227	0	452	0,05
Informal sector (Non-agricultural)	2,4	2,3	37	-92	167	0,57
Agriculture	6,2	5,8	37	-30	104	0,28
Private households	3,1	3,2	26	-67	119	0,58
Western Cape	1,5	1,6	0	-77	76	0,99
Formal sector (Non-agricultural)	2,2	2,2	13	-64	91	0,73
Informal sector (Non-agricultural)	8,0	8,0	-25	-62	14	0,21
Agriculture	11,7	10,8	10	-7	28	0,25
Private households	10,6	8,3	0	-32	32	0,99
Eastern Cape	2,4	2,6	32	-59	125	0,48
Formal sector (Non-agricultural)	3,0	3,7	-8	-78	63	0,84
Informal sector (Non-agricultural)	7,1	6,9	45	4	86	0,03
Agriculture	24,1	21,3	-7	-31	16	0,53
Private households	11,6	10,5	3	-31	36	0,88
Northern Cape	2,4	2,9	12	-10	34	0,29
Formal sector (Non-agricultural)	3,8	4,1	16	-7	38	0,17
Informal sector (Non-agricultural)	10,7	8,8	-1	-10	8	0,84
Agriculture	11,7	6,6	-2	-16	12	0,78
Private households	17,3	18,3	-1	-12	10	0,86
Free State	3,9	2,2	-90	-152	-30	0,00
Formal sector (Non-agricultural)	6,9	3,1	-79	-146	-11	0,02
Informal sector (Non-agricultural)	7,0	7,3	-27	-52	-1	0,04
Agriculture	11,6	18,9	0	-28	28	0,99
Private households	8,2	7,4	14	-2	30	0,08
KwaZulu-Natal	1,5	2,2	23	-97	143	0,70
Formal sector (Non-agricultural)	2,5	2,9	126	30	222	0,01
Informal sector (Non-agricultural)	5,8	5,3	-97	-167	-26	0,01
Agriculture	17,8	19,6	-8	-38	21	0,57
Private households	7,8	7,3	2	-41	45	0,92

Appendix 3.4B: Sampling variability for the employed by province and sector (concluded)						
	Jul-Sep 2011 CV	Jul-Sep 2012 CV	Estimate	Lower 95%	Upper 95%	P-Value
North West	3,2	2,4	65	18	111	0,01
Formal sector (Non-agricultural)	4,5	3,1	29	-14	71	0,19
Informal sector (Non-agricultural)	7,5	8,3	21	1	42	0,04
Agriculture	21,8	20,8	0	-7	8	0,89
Private households	13,2	10,3	14	-1	30	0,07
Gauteng	1,3	1,5	211	72	349	0,00
Formal sector (Non-agricultural)	1,6	2,1	175	29	321	0,02
Informal sector (Non-agricultural)	5,3	4,8	42	-22	106	0,20
Agriculture	22,5	26,6	10	-14	34	0,42
Private households	6,2	8,3	-16	-74	41	0,58
Mpumalanga	2,3	2,2	17	-39	74	0,55
Formal sector (Non-agricultural)	4,0	3,0	-9	-59	41	0,72
Informal sector (Non-agricultural)	6,2	6,9	16	-13	45	0,28
Agriculture	13,5	11,1	12	-14	37	0,36
Private households	7,1	10,4	-2	-20	17	0,86
Limpopo	3,4	3,3	58	-33	149	0,21
Formal sector (Non-agricultural)	4,1	4,1	-37	-89	15	0,16
Informal sector (Non-agricultural)	4,9	6,3	62	7	116	0,03
Agriculture	25,0	16,9	22	-2	47	0,08
Private households	10,8	7,6	12	-13	36	0,36

Appendix 3.5B: Sampling variability for the employed by sex and occupation						
	Jul-Sep 2011 CV	Jul-Sep 2012 CV	Estimate	Lower 95%	Upper 95%	P-Value
Both sexes	0,7	0,7	327	87	567	0,01
Manager	3,7	3,8	5	-106	115	0,93
Professional	4,2	4,1	35	-50	120	0,42
Technician	2,5	2,9	83	-26	194	0,14
Clerk	2,5	2,9	-36	-142	70	0,51
Sales and services	2,3	2,6	87	-55	228	0,23
Skilled agriculture	12,4	14,1	6	-13	26	0,53
Craft and related trade	3,6	2,5	7	-134	148	0,92
Plant and machine operator	3,1	3,2	53	-40	146	0,26
Elementary	2,1	2,0	88	-62	240	0,25
Domestic worker	3,3	3,3	-2	-78	75	0,96
Women	1,0	1,0	133	-23	288	0,10
Manager	6,0	5,7	-3	-56	50	0,91
Professional	5,0	6,4	-30	-83	21	0,25
Technician	3,3	3,3	63	-9	135	0,09
Clerk	3,0	3,4	-18	-106	69	0,67
Sales and services	2,9	3,2	94	13	175	0,02
Skilled agriculture	22,5	23,8	2	-10	14	0,73
Craft and related trade	7,0	7,0	-17	-50	17	0,33
Plant and machine operator	8,7	9,2	-11	-46	24	0,53
Elementary	2,9	2,7	60	-28	149	0,18
Domestic worker	3,3	3,3	-6	-80	67	0,87
Men	0,9	0,8	195	34	355	0,02
Manager	3,9	4,3	8	-74	90	0,85
Professional	5,8	5,0	65	0	131	0,05
Technician	4,1	4,1	21	-54	96	0,59
Clerk	4,3	5,1	-17	-71	37	0,54
Sales and services	3,2	3,7	-8	-115	100	0,89
Skilled agriculture	14,3	16,1	5	-14	22	0,64
Craft and related trade	4,0	2,6	23	-113	160	0,74
Plant and machine operator	3,1	3,3	64	-20	149	0,14
Elementary	2,7	2,5	28	-87	143	0,63
Domestic worker	18,7	16,9	5	-11	20	0,59