

Southern Africa Consortium
for
Monitoring Educational Quality
(SACMEQ)

Manual
for
Data Collectors

International Institute for Educational Planning
7-9, rue Eugène-Delacroix
75116 Paris
FRANCE

Manual for Data Collectors

Contents

<u>INTRODUCTION</u>	1
<u>Part I: AT THE TRAINING SESSION</u>	2
Section A Examination of the Packet of Instruments	2
Section B Filling in the Identification Numbers in the ID BOX	4
Section C Examining the Contents of Each Instrument	6
Section D Other Matters	7
<u>Part II: VISITING SCHOOL BEFORE THE TESTING DAY</u>	8
Section A Explanation to School Head	8
Section B Select Pupils Using Random Number Tables	8
Section C Arranging the Testing Room	9
<u>Part III: ON THE TESTING DAY</u>	10
Section A School Head Questionnaire	10
Section B Teacher Questionnaire	10
Section C Pupil Questionnaire (Session 1)	10
Section D Pupil Reading Test (Session 2)	13
Section E Measuring the Height of Each Pupil	14
Section F After the Testing Has Been Completed	14
<u>Part IV: AFTER LEAVING THE SCHOOL</u>	16

Appendices

Appendix A: Flow Diagram of Actions

Appendix B: Random Number Tables for the Selection of 20 Grade Six Students within Each Selected School

Appendix C: Pupil Name Form

INTRODUCTION

This manual was prepared for use by the Data Collectors participating in the Initial Project of the Southern Africa Consortium for Monitoring Educational Quality (SACMEQ).

The manual has four parts.

1. The *first* part describes **WHAT TAKES PLACE AT THE TRAINING SESSION FOR THE DATA COLLECTORS.**
2. The *second* part describes **WHAT TASKS MUST BE CARRIED OUT WHEN THE DATA COLLECTOR VISITS A SCHOOL BEFORE THE TESTING DAY.**
3. The *third* part describes **WHAT TASKS THE DATA COLLECTOR MUST CARRY OUT ON THE TESTING DAY AT SCHOOL.**
4. The *fourth* part describes **WHAT THE DATA COLLECTOR MUST DO AFTER LEAVING THE SCHOOL.**

It is very important that the data collectors go through this document BEFORE ACTUALLY VISITING THE SCHOOL(S).

Please note that quick checklists have been included at the end of each section. Also the flow diagram in Appendix A provides a sequential description of all tasks that must be undertaken by Data Collectors.

PART I: AT THE TRAINING SESSION

A. Examination of the packet of instruments

During the training session, you will receive instruments in a packet for each school which you will test. If you have one school to test, you will have one packet, and if you have two schools to test, you should have two packets, and so on.

In each packet, you will find the following data collection instruments and “other materials”:

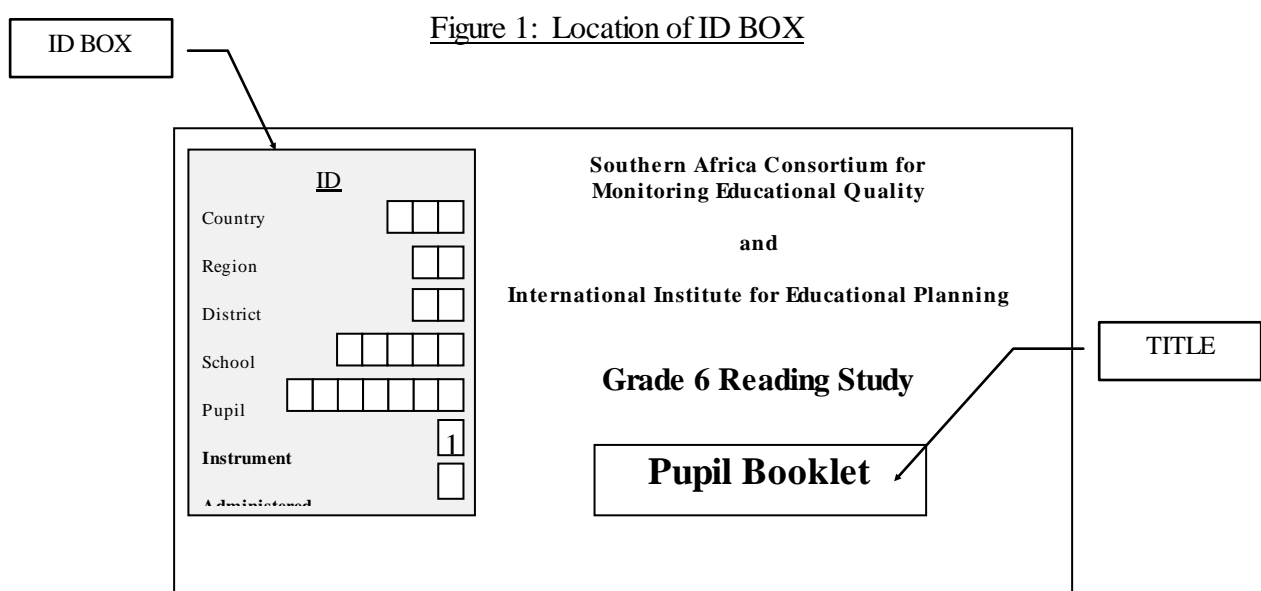
Data Collection Instruments

- 22 Pupil Booklets (Questionnaire and Test);
- the required number of Teacher Questionnaires; and
- 1 School Head Questionnaire.

Other Materials

- 1 School Form (one completed and one spare);
- 1 metre ruler or measuring tape with some “sticky stuff”;
- 2 Pupil Name Forms; and
- a number of pencils.

You can distinguish the three different types of data collection instruments by examining their titles and the ID BOX on the top left corner as shown in Figure 1.



The ID Box for the Pupil, Teacher, and School Head Questionnaires differ in some respects. Examples of these boxes have been presented in Figure 2 .

Figure 2: Three different types of ID BOXES

Pupil Booklet	Teacher Questionnaire	School Head Questionnaire
ID	ID	ID
Country □ □ □	Country □ □ □	Country □ □ □
Region □ □	Region □ □	Region □ □
District □ □	District □ □	District □ □
School □ □ □ □ □	School □ □ □ □ □	School □ □ □ □ □
Pupil □ □ □ □ □ □ □	Teacher □ □ □ □ □ □ □ □ □	
Instrument □ 1	Instrument □ 2	Instrument □ 3
Administered □	Administered □	

Please note that only 20 Pupil Booklets will be used for testing. You have also been given 2 extra Pupil Booklets as spare copies.

For each school, a sufficient number of Teacher Questionnaires has been included in order to cater for schools that have up to ten classes in Grade 6.

Quick Checklist 1A

1. Did you receive the number of packets equal to the number of schools that you will be testing?
2. Were there 22 Pupil Booklets in each packet?
3. Was the correct number of Teacher Questionnaires in each packet?
4. Was there one School Head Questionnaire in each packet?
5. Was there a metre ruler or measuring tape with some “sticky stuff” in each packet?

+ If the answer to any of the above questions is ‘No’, please inform the Trainer. If all the answers are ‘Yes’, you may go on to the next section.

B. Filling in the identification numbers in the ID BOX

For any one school, the first four identification numbers (Country ID, Region ID, District ID, and School ID) will be identical for all instruments.

1. Country ID

On the first line of the ID Box, please write in the identification number of your country for each of the data collection instruments (i.e., 22 Pupil Booklets, all Teacher Questionnaires, and 1 School Head Questionnaire) by referring to Table 1 below.

Table 1: Country ID

Country	ID #		
Kenya	2	5	4
Malawi	2	6	5
Mauritius	2	3	0
Namibia	2	6	4
South Africa	0	2	7
Tanzania (Mainland)	2	5	5
Tanzania (Zanzibar)	0	5	4
Zambia	2	6	0
Zimbabwe	2	6	3

2. Region ID, District ID, and School ID

These identification numbers are specific to your country. Please note that two spaces are allocated for the Region ID, two spaces for the District ID, and five spaces for the School ID. The trainer will instruct you on how to write in the identification numbers on each.

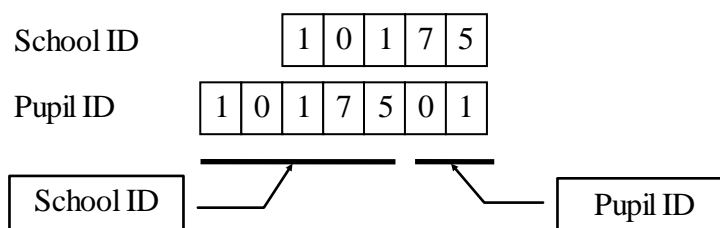
3. Pupil ID

Now set aside the Teacher Questionnaires and the School Head Questionnaire, and look at the third last line in the ID BOX on the Pupil Booklet.

Working from the left, copy the School ID in the first five spaces/boxes followed by the Pupil ID in the last two spaces/boxes

For the Pupil ID, you will write 01 on the first Pupil Booklet, 02 on the second Booklet, 03 on the third Booklet and so on up to 20 for the twentieth Booklet for each school. Repeat this procedure for other schools if you will be testing at more than one.

Figure 3: School ID and Pupil ID



4. Teacher ID

Now look at the Teacher Questionnaires. Following the procedure for Pupil ID, write 001 for the first Teacher Questionnaire, 002 for the second Questionnaire, 003 for the third Questionnaire and so on up to the number of Teacher Questionnaires that you have for each school. If you will be testing at more than one school, you will need to repeat this procedure for the other schools.

Quick Checklist 1B

1. Did you write the same Country ID number on the first line in the ID BOX of all the data collection instruments for every school?
2. Did you write the same Region ID number on the second line in the ID BOX of all the data collection instruments for schools in the same Region?
3. Did you write the same District ID number on the third line in the ID BOX of all the data collection instruments for schools in the same District?
4. Did you write the same School ID number on the fourth line in the ID BOX of all the data collection instruments for pupils in the same School?
5. Did you write Pupil ID number starting 01 up to 20 on the fifth line in the ID BOX of all the Pupil Booklets for each school?
6. Did you write Teacher ID number starting from 001 up to the number of teachers you will test, on the fifth line in the ID BOX, of all the Teacher Questionnaires for each school?

+ If the answer to any of the above questions is 'No', please talk to the Trainer. If all the answers are 'Yes', you may go on to the next section.

C. Examining the contents of each instrument

1. Pupil Booklet

Each Pupil Booklet should have 47 pages. The Booklet should have three sections: the first section is the Pupil Questionnaire; the second section is the Practice Exercise for the Reading Test; and the third section is Pupil Reading Test. Check that all the sections are included in each Pupil Booklet and that every page is printed. Check that the month for Question 19 in Part I of the Pupil Booklet has been entered.

If you find a missing page, then remove that Booklet and replace it with one of the spare copies. Make sure that you copy all of the identification numbers from the old Booklet to the replacement Booklet.

2. Teacher Questionnaire

Each Teacher Questionnaire should have 11 pages. The number of Teacher Questionnaires required for each school will depend upon how many teachers teach reading to the 20 pupils in the sample. For example, in schools with four Grade 6 classes, it will be necessary to have four Teacher Questionnaires.

If you find a missing page, remove the Questionnaire and replace it with one of the spare copies. Make sure that you copy all of the identification numbers from the old Questionnaire to the replacement Questionnaire.

3. School Head Questionnaire

The School Head Questionnaire should have 11 pages. If you find a missing page, then inform the Trainer and obtain another School Head Questionnaire. Make sure that you copy all of the identification numbers from the old Questionnaire on to the replacement Questionnaire.

Quick Checklist 1C

1. Do all Pupil Booklets have all of the 47 pages?
2. Do all Teacher Questionnaires have all of the 11 pages?
3. Does the School Head Questionnaire have all of the 11 pages?

+ If the answer to any of the above questions is 'No', please talk to the Trainer. If all the answers are 'Yes', you may go on to the next section.

D. Other matters

You will be told by the trainer when you have to go to the school for testing. If you know that pupils may not have pencils, please ask the Trainer for the number you think you will require.

You will use a metre ruler or measuring tape in order to measure the height of the pupils. Please ensure that you understand the procedures for measuring the height of pupils by using the metre ruler or measuring tape and “sticky stuff”.

Quick Checklist 1D

1. Do you know how to get to the school?
2. Do you know when to visit the school?
3. Do you know the name of the School Head?
4. Do you know how to use a metre ruler or measuring tape?

+ If the answer to any of the above questions is ‘No’, please talk to the Trainer. If all the answers are ‘Yes’, you may go on to the next section.

PART II: VISITING SCHOOL BEFORE THE TESTING DAY

A. Explanation to School Head

Explain to the School Head the objectives of the study. They are:

- to collect information about the conditions of school buildings, teacher housing, and pupils' access to books;
- to compare the conditions of schooling, teacher housing, teachers' and principals' qualifications with the Ministry of Education's Benchmark Standards and among different regions; and
- to investigate what contributes to the level of reading achievement for Grade 6 pupils.

Emphasize to the School Head that this study is important for primary education in your country and that all information collected from School Heads, Teachers, and Pupils will be treated in confidence. Inform the School Head that over 1,000 schools, over 2,000 teachers, and about 20,000 pupils from nine Southern African countries are taking part in the study.

B. Select pupils using random number tables

Explain to the School Head that you have to take a random sample of 20 pupils across all the Grade 6 classes in the school. Then, undertake the following steps:

Step 1: Obtain Grade 6 register(s) of attendance.

These registers must be obtained for all Grade 6 pupils that attend normal (not 'special') classes. In multiple session schools, both morning and afternoon registers must be obtained.

Step 2: Assign sequential numbers to all Grade 6 pupils.

Place a sequential number beside the name of each Grade 6 pupil.

Example: Consider a school with one morning session and a total of 48 pupils in Grade 6. Commence by placing the number '1' beside the first pupil on the Register; then place the number '2' beside the second pupil on the Register;... etc. ...; finally, place the number '48' beside the last pupil on the Register.

Another example: Consider a school with 42 pupils in the morning session and 48 pupils in the afternoon session of Grade 6. Commence by placing the number '1' beside the first pupil on the morning register; ... etc. ...; then place a '42' beside the last pupil on the morning register; then place a '43' beside the first pupil on the afternoon register; ... etc....; finally place a '90' beside the last pupil on the afternoon register.

Step 3: Locate the appropriate set of selection numbers.

In Appendix B, sets of ‘selection numbers’ have been listed for a variety of school sizes. For example, if a school has 48 pupils in Grade 6, then the appropriate set of selection numbers is listed under the ‘R48’ heading. Similarly, if a school has 90 Grade 6 pupils then the appropriate set of selection numbers is listed under the ‘R90’ heading. (Mauritius and Namibia: You will need the Random Tables for 40 pupils per school for some schools. You were given these tables in Harare.)

Step 4: Use the appropriate set of selection numbers.

After locating the appropriate set of selection numbers, use the numbers to select the sample of 20 pupils. Use the first selection number to locate the Grade 6 pupil with the same sequential number on the Register(s). Use the second selection number to locate the Grade 6 pupil with the same sequential number on the Register(s). Continue with this process until the full set of 20 selection numbers has been used.

Example: In a school with a total of 50 pupils in Grade 6 the first pupil selected has sequential number “2”; the second pupil selected has sequential number “4”; the third pupil selected has sequential number “5”, ... the sixth has sequential number “9”, and so on.

Step 5: Copy the names of 20 selected pupils onto the Pupil Name Form (Appendix C).

Step 6: Complete all information on the Pupil Name Form (class, shifts, age, sex).

C. Arranging the testing room

You must arrange with the School Head which classroom you will use for conducting the pupil testing. Make sure that there is enough room for the pupils to sit and write. Ask the School Head to arrange for the 20 pupils you have selected to go to that room for the time when you have arranged for the testing to begin.

Quick Checklist 2A

1. Did you explain the purpose of the study to the School Head of each school?
2. Did you use the random number tables to select the sub-sample of pupils from each school?
3. Did you identify the teachers of the selected pupils?
4. Did you arrange a classroom for the pupil testing session?

+ If the answer to any of the above questions is ‘No’, please read the previous section again. If all the answers are ‘Yes’, you may go on to the next section.

PART III. ON THE TESTING DAY

A. School Head Questionnaire

Give the School Head Questionnaire to the Headmaster or Headmistress and ask him/her to fill it in while you are testing the pupils. Make it clear to the School Head that all data collected will be treated as confidential and that all questions should be answered. Explain that you will collect the School Head Questionnaire after the pupil testing has been completed.

B. Teacher Questionnaire

If the pupils are all from one class (this means that there is only one class in Grade 6), give the Teacher Questionnaire to the teacher of that class. If there are more classes, ask the School Head to look at the list of 20 pupil names and tell you the names of all the teachers who teach the selected pupils. These teachers should be given the Teacher Questionnaires.

Ask the teacher(s) to complete their questionnaires in a different room from where the pupil testing is done. Make it clear that all data collected will be treated as confidential and that all questions should be answered. Please ensure that Question 1 is answered even if the teacher is absent. Fill the space after the 'Administered' in the Teacher ID Box as follows:

1. if the questionnaire was administered; and
2. if the teacher was absent.

If a teacher teaches more than one class in Grade 6, he or she should refer to the largest of the classes he or she teaches for Questions 8, 9, and 10.

C. Pupil Questionnaire (Session 1)

(a) Before the Pupil Testing Session

Go to the Grade 6 classrooms and, in the presence of the teachers, call up the pupils who have been selected for the testing (see Pupil Name Form). Ask them to accompany you to the testing room. Make sure that they are all seated comfortably and in such a way that they cannot copy from each other.

Ask the pupils to check that they have the correct ID numbers on their Booklets. Do this by reading out the list of 20 ID numbers and names from the Pupil Name Form. Ensure that the 20 pupils that you have selected using the random number tables are present.

If a pupil is present whose name is not on the list, ask the pupil to leave the room. If there is a pupil on the list who has not appeared in the classroom, write "Absent" on the top of the front page of his/her Booklet. You must not replace this pupil with another one. You must return this Booklet with the others when you package everything up to return to the Regional Office. Fill in the box/space next to 'Administered' in the Pupil ID Box as follows:

1. if the instrument was administered;
2. if the pupil was absent for the whole questionnaire and test or was unable to write as a result of injury or physical handicap;
3. pupil present but not able to read at all, either because he or she has no knowledge of English (or Kiswahili in Tanzania (Mainland) or Tanzania (Zanzibar)) or due to mental handicap; and
4. pupil absent for part of the questionnaire and/or test.

Say to the pupils:

THIS IS A SPECIAL PROJECT FROM THE MINISTRY OF EDUCATION AND CULTURE FOR _____ (your country). THERE ARE OVER 1000 SCHOOLS IN MANY COUNTRIES OF THE SOUTHERN AFRICAN REGION TAKING PART. YOUR SCHOOL IS ONE OF THEM, AND YOU HAVE BEEN PICKED TO REPRESENT YOUR SCHOOL. I WANT YOU TO TRY YOUR BEST. ARE THERE ANY QUESTIONS?

When you have answered all questions, make sure that all pupils have a pencil or pen. Now hand out a copy of the Pupil Booklet to each pupil.

(b) During the Pupil Testing Session

You should lead the pupils through Part 1 of the Pupil Booklet. Go one question at a time. Be prepared to use both English or the local language of the children. Read aloud each question in the questionnaire. It is essential that every child answers every question. You will need to walk round the testing room to ensure that every question is being answered. Do not go from one question to the next before you have made sure that every child has answered the question.

After making sure that the pupils have settled down, say:

THE BOOKLET IN FRONT OF YOU IS IN TWO PARTS. WE WILL COMMENCE WITH THE FIRST PART WHICH CONTAINS QUESTIONS ABOUT YOURSELF.

At this point, ask the pupils to open the Booklet and answer Question 1. You should read the question aloud in English or in the mother tongue of the pupils.

WHICH GRADE 6 CLASS ARE YOU IN THIS TERM? IF YOU ARE IN 6A, TICK THE BOX BELOW 6A. IF YOU ARE IN 6B, TICK THE BOX BELOW 6B. IF YOU ARE IN 6C, TICK THE BOX BELOW 6C AND SO ON.

In a school using a classification system different from 6A, 6B, etc., the Data Collector should write the school's names for classes on the blackboard and write clearly which is to be labelled 6A, 6B, etc. For example, some schools use colour codes for naming their classes. The classes in these schools could be named red, blue, green, and yellow. You should write these names on the blackboard in alphabetical order (blue, green, red, yellow) and then write 6A beside

blue, 6B beside green, and so on. Remember that the same system of naming classes should be used for the first question of the Teacher Questionnaire.

Go round and check that the children are filling in the answers correctly and that there are no missing data. You must also check that the pupils do not break their pencils, etc.

Using the Pupil Name Form, check that the answers to Question 1 given by the pupils agree with what is written in the Pupil Name Form. For Question 2, carry out the same check. If a pupil does not know the date of birth, use what is written in the Pupil Name Form. If nothing is written in the Pupil Name Form and if the teacher is not there, try to establish with the pupil a 'reasonable' date of birth and have the pupil enter that in his/her questionnaire and also enter it on the Pupil Name Form.

When all pupils have completed the fourth question, say:

QUESTIONS 5 TO 18 ARE ABOUT THE PLACE WHERE YOU USUALLY LIVE WHEN YOU ARE GOING TO SCHOOL. ARE THERE ANY QUESTIONS ABOUT THIS?

It is important to stress that the questions refer to the place where they stay during the week when they are attending school. This may be a hostel or boarding accommodation or with relatives etc. However, most children will live with their parents.

When all questions have been answered, say:

PLEASE START WITH QUESTION 5.

When all pupils have completed Question 7, say

NOW STOP FOR A MINUTE AND LOOK AT THE BOARD.

On the board write the question 8.01:

	No	Yes
8.01 Daily Newspaper	<input type="checkbox"/>	<input type="checkbox"/>

Explain to the pupils that they have to put a tick in the box they choose. If they do not have a daily newspaper at the place where they live then they must put a tick in the box under **No** and if they do have one they should put a tick in the box under **Yes**. Tell them not to use crosses.

When you have explained this, say:

NOW START QUESTION 8 AND CONTINUE.

As they are filling in Question 8 please go round the testing room and make sure that they are filling in the boxes in the required way. If any pupil is not doing it correctly explain to him or her individually how to do it.

When all pupils have completed question 18, say:

QUESTIONS 19 TO 25 ARE ABOUT YOUR SCHOOL. ARE THERE ANY QUESTIONS ABOUT THIS?

When all questions have been answered, say:

PLEASE START WITH QUESTION 19.

When the pupils reach Question 20, explain to them that a reader (or an English textbook) is the book that pupils normally use for reading in their classrooms during their reading lessons.

At the end of the PART 1 of the Pupil Booklet, say:

PUT YOUR PENCILS DOWN. WE SHALL NOW HAVE A FIFTEEN MINUTES BREAK. YOU MAY GO OUTSIDE TO PLAY BUT LEAVE YOUR BOOKLETS ON THE DESK WHERE YOU ARE SITTING. PLEASE REMEMBER WHERE YOU ARE SITTING.

D. Pupil Reading Test (Session 2)

After 15 minutes, call the pupils back to the classroom. It is essential that you make sure that each pupil sits in the same place he/she was in before and has the same Booklet.

Whereas in Session 1 you were asked to read every question and lead the pupils through the questionnaire, you **MUST NOT** help the pupils in any way with the questions in the Reading test in this Session 2.

When the pupils have settled down, say:

BEFORE YOU START THE READING TEST, WE WILL COMPLETE SEVERAL PRACTICE QUESTIONS. TURN TO PAGE 10 OF THE BOOKLET. THERE IS A STORY CALLED “THE BIRTHDAY PRESENT”. LET US READ THIS QUESTION TOGETHER.

Read the passage of “The Birthday Present”, and say:

AFTER THE STORY, THERE ARE SOME QUESTIONS. UNDER EACH QUESTION, THERE ARE FOUR ANSWERS MARKED A, B, C, OR D. BETWEEN THOSE LETTERS AND THE ANSWERS, THERE ARE BOXES. YOU MUST PUT A TICK IN THE BOX OF THE ANSWER YOU CHOOSE.

IN THE PASSAGE, DAN GOT A BIKE FOR HIS BIRTHDAY. THEREFORE YOU SHOULD PUT A TICK IN THE BOX NEXT TO THE B. LET US PRACTICE SOME MORE.

Read the second question, elicit answers from the pupils and give feedback. Do the same for the third question. Follow this with practice exercise 2 “Magazine Prices”. After working through these two practice exercises, ask the pupils if there are any questions. Then tell them to turn the page, and read the “Directions” out aloud for them. Ask if there are any questions. After all questions have been answered, say:

START THE TEST NOW.

Go around the class and make sure that the pupils are putting ticks in the boxes. If some pupils finish early, they may hand their tests in to you and read a book.

Special Note:

There are two blank pages in the test: on page 21 and page 43. Please make sure that the pupils do not stop at these pages. They should continue their work until they reach question 60, which is the last question on the test.

After 90 minutes, look around the pupils to see who has finished and who has not finished. As pupils finish the test, begin to measure and record their heights (see **E** below). Allow as much time as possible for all pupils to finish. When you have entered their heights on their questionnaires and the exercise is completed, hand over the pupils to the relevant authorities. Thank the pupils for their efforts and express the hope that they enjoyed taking the test.

You now have all of the twenty booklets. Place them in a pile in the sequential numbering of pupils from 01 to 20.

If during the testing, a pupil is present for one session only or has to be excused during a session, write this in the Remarks column on the Pupil Name Form.

E. Measuring the height of each pupil

You have been given a metre stick or measuring tape and “sticky stuff” during the training session. In order to measure the height of each pupil, you will first place a metre stick or measuring tape up against a wall and put a pencil mark on the wall indicating one metre. Install some “sticky stuff” at three different locations: a few centimetres above the pencil mark, 50 centimetres above the pencil mark, and about one metre above the pencil mark. Then place the metre stick further up starting at the pencil mark and attach it on the wall by pressing on the sticky stuff. Now ask each pupil to come up to the wall and have them take off their shoes (and socks). Ask them to stand up

straight in front of the ruler. Finally enter the height of each pupil in the appropriate place on the Pupil Questionnaire.

F. After the testing has been completed

After all of the Pupil Booklets have been collected and put into a pile and tied with string, the Data Collector should return to the School Head and the Teachers who were completing their Questionnaires. First of all, the Data Collector should ask them how they liked the Questionnaire and if they had any problems or if they felt there were some important things about their school that were not asked. Make a note of what these were and give the note to your NRC.

CHECK EACH OF THE QUESTIONNAIRES FOR COMPLETENESS. If any of the questions were not answered, ask the respondents to complete what they have missed. If they have had problems, help them. Find out why they missed questions and if there was a reason, add this to the note that you have prepared for your NRC. When they have completed the Questionnaires, add them to your pile. Thank the School Head and Teachers very much for their co-operation.

Quick Checklist 2B

1. Did you explain to the pupils why they needed to take a test?
2. Did you go through the Pupil Questionnaire item by item?
3. Did you go through the practice exercises of the reading test?
4. Are the identification numbers of the completed Pupil Booklets sequential?
5. Have the School Head and Teachers answered all questions?

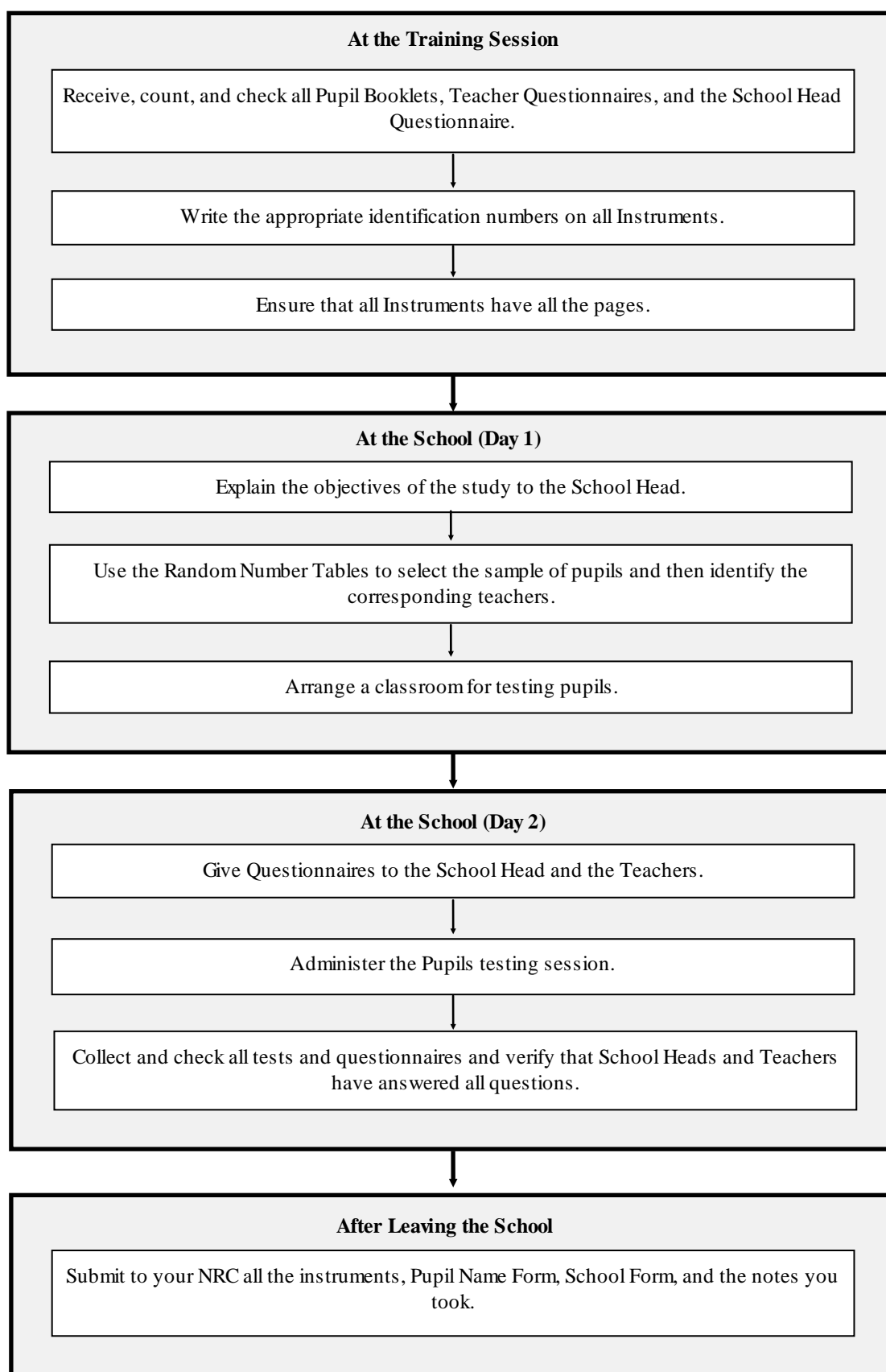
+ If the answer to any of the above questions is 'No', please make sure to take appropriate action as soon as possible. If all the answers are 'Yes', then you leave the school.

PART IV. AFTER LEAVING THE SCHOOL

After leaving the school, return to the place designated by the NRC and hand the pile to him/her together with the Pupil Name Form and the little note that you have prepared on difficulties encountered during the testing session.

Your mission has been successfully accomplished. Thank you very much for your hard work.

Appendix A: Flow Diagram of Actions for Data Collectors



Appendix B(i): Random Number Tables for the Selection of 20 Grade Six Students

Within Each Selected School

Case#	R21	R22	R23	R24	R25	R26	R27	R28	R29	R30	R31	R32	R33	R34	R35	Case#	R36	R37	R38	R39	R40	R41	R42	R43	R44	R45	R46	R47	R48	R49	R50	
1	1	1	1	1	1	1	1	1	1	2	2	1	1	2	1	1	1	3	1	1	1	3	4	2	1	1	2	1	2	2		
2	2	2	2	2	2	2	2	3	3	3	3	2	3	3	3	2	5	2	5	6	2	2	5	4	5	5	2	2	3	2	4	
3	3	3	3	3	3	3	3	4	4	4	4	3	4	4	4	3	6	3	6	7	4	6	6	6	6	3	6	5	6	5		
4	4	4	4	4	4	5	4	6	5	7	7	5	5	6	6	4	8	4	7	8	7	7	8	10	13	8	4	11	7	9	6	
5	5	5	5	5	5	6	5	7	6	8	8	7	7	9	7	5	10	7	10	11	10	8	11	12	15	9	10	12	8	10	8	
6	6	6	6	6	6	7	6	8	7	9	9	8	9	8	9	12	11	8	11	13	11	10	13	16	10	11	13	10	13	9	9	
7	7	7	7	7	7	8	7	11	8	10	11	9	11	14	13	7	13	9	12	15	14	11	14	15	19	12	15	17	13	15	14	
8	8	8	8	8	8	10	8	12	9	11	12	10	12	15	15	8	14	12	16	17	16	12	17	16	22	13	19	18	17	16	21	
9	9	9	9	9	9	12	11	9	13	10	13	13	11	14	17	16	9	17	14	17	18	17	13	18	20	23	15	20	18	17	22	
10	10	10	11	11	13	13	10	14	12	14	14	14	13	15	18	17	10	18	15	24	19	18	15	20	26	26	17	21	21	19	23	23
11	11	11	12	12	14	14	11	15	13	15	17	17	14	16	19	20	11	19	16	25	21	21	22	28	28	22	26	27	20	32	24	
12	13	13	13	15	15	15	12	16	16	17	18	16	17	21	21	21	12	17	26	23	22	19	23	32	33	23	30	28	21	33	25	
13	14	14	15	17	16	16	16	17	19	18	20	17	19	23	22	22	13	24	19	27	26	23	22	24	33	34	25	31	29	25	34	27
14	15	15	16	18	17	17	18	19	20	19	22	20	21	27	23	23	14	25	20	29	28	24	23	25	34	35	27	33	30	28	35	29
15	16	16	17	19	18	20	19	20	22	26	24	23	22	28	24	24	15	26	30	31	30	26	29	35	36	29	35	35	30	36	31	
16	17	18	18	20	19	21	20	21	24	22	26	25	24	29	25	25	16	30	28	31	33	32	28	30	36	37	30	37	43	32	38	33
17	18	19	20	21	20	22	22	25	23	27	27	27	27	30	28	28	17	31	30	32	34	34	29	31	38	38	34	38	44	34	41	34
18	19	20	21	22	21	23	23	26	24	28	29	30	31	32	32	32	18	31	33	33	35	31	33	39	39	36	40	45	39	45	40	
19	20	21	22	23	24	25	24	27	25	29	30	32	32	35	35	35	19	32	36	38	39	42	40	41	44	46	44	48	43	43	43	
20	21	22	23	24	24	25	26	25	29	27	31	31	33	34	34	34	20	36	35	38	39	39	41	35	43	41	44	45	47	48	49	50

Case#	R51	R52	R53	R54	R55	R56	R57	R58	R59	R60	R61	R62	R63	R64	R65	Case#	R66	R67	R68	R69	R70	R71	R72	R73	R74	R75	R76	R77	R78	R79	R80	
1	1	1	2	3	3	1	6	2	1	1	1	2	4	8	2	3	1	4	1	4	3	6	1	2	1	1	4	3	7	6		
2	3	3	4	5	8	7	5	3	3	2	5	6	15	6	6	6	2	10	6	6	7	9	5	8	3	7	3	5	7	4	8	12
3	4	5	5	6	7	9	6	5	15	10	8	18	7	8	7	8	3	11	9	7	10	9	10	4	8	21	7	12	13	11	13	
4	10	6	8	15	10	12	13	9	7	16	11	20	8	14	4	4	12	15	9	20	14	12	13	9	10	23	17	15	14	13	14	
5	15	12	12	16	11	14	15	10	8	17	21	12	21	9	15	5	16	19	10	21	15	14	14	13	14	28	18	16	28	27		
6	18	16	17	17	13	16	20	12	12	18	22	19	23	13	17	6	19	22	11	25	18	17	16	14	19	30	19	20	29	28		
7	19	18	21	18	21	19	22	23	16	19	23	25	26	14	21	7	26	23	13	29	20	22	22	17	23	34	23	30	32	39	30	
8	23	21	27	20	24	20	25	25	21	20	24	29	33	18	22	8	27	32	15	30	21	25	23	11	26	26	34	31	32	40	31	
9	24	24	29	21	25	21	31	27	24	24	27	33	35	23	25	9	28	30	17	32	27	28	24	19	36	41	28	25	41	41	33	
10	28	26	30	23	26	24	33	32	28	25	28	34	36	26	29	10	31	36	25	33	38	29	27	22	38	42	29	26	42	42	35	
11	29	27	31	25	27	25	36	33	29	26	31	35	37	28	33	11	34	41	32	35	39	38	30	24	41	44	33	32	48	51	36	
12	33	29	32	27	31	26	38	38	31	31	32	36	40	29	35	12	44	48	33	38	43	41	31	29	45	45	41	34	53	53	40	
13	35	32	33	34	32	30	39	40	36	35	35	41	43	31	36	13	45	50	35	41	46	46	35	33	47	46	45	41	55	55	45	
14	37	33	37	36	34	39	42	43	42	38	40	42	45	33	40	14	46	54	38	47	47	49	38	38	56	50	51	47	56	60	48	
15	39	35	38	39	36	41	43	45	45	39	45	46	46	36	41	15	48	60	39	51	55	54	39	58	52	52	57	63	62	55	55	
16	42	37	40	41	38	43	44	46	49	41	49	48	49	45	53	16	53	61	47	54	57	55	40	45	62	53	57	60	67	68	58	
17	43	39	41	46	39	47	45	48	52	49	55	56	50	54	55	17	55	62	53	55	59	57	43	58	63	56	64	64	70	71	66	
18	45	44	43	49	40	49	51	51	53	55	57	57	55	58	61	18	57	63	60	60	61	47	64	68	71	65	70	72	73	67		
19	47	46	45	51	42	53	54	53	54	56	59	58	60	61	62	19	58	66	65	63	61	70	61	69	70	72	68	74	73	74	73	
20	51	48	48	53	51	56	56	55	56	60	61	61	63	64	63	20	59	67	67	68	66	71	71	70	71	73	71	75	75	76	75	

Case#	R81	R82	R83	R84	R85	R86	R87	R88	R89	R90	R91	R92	R93	R94	R95	Case#	R96	R97	R98	R99	R100
1	2	1	4	8	7	13	2	3	2	2	3	4	3	4	6	1	6	7	4	1	2
2	3	3	10	10	11	16	3	5	7	4	4	6	6	11	11	2	7	11	9	2	5
3	6	4	11	11	13	17	10	11	14	5	6	7	8	14	20	3	9	13	15	3	6
4	8	5	14	12	15	19	16	12	16	12	9	10	12	19	22	4	13	15	32	6	7
5	12	10	15	13	20	20	21	18	19	15	10	15	31	20	23	5	17	16	38	9	30
6	13	13	25	18	21	21	22	19	31	16	14	19	36	21	27	6	26	25	39	11	33
7	16	17	28	24	24	30	29	22	32	19	16	20	45	32	32	7	35	29	42	15	42
8	22	24	29	30	30	30	28	33	22	32	27	48	35	34	34	8	41	33	51	16	47
9	24	26	30	35	32	50	32	31	40	28	29	34	51	36	36	9	45	37	53	36	51
10	33	32	33	42	34	53	33	39	45	31	31	35	53	43	37	10	56	41	54	39	53
11	41	42	34	43	36	54	34	41	49	36	37	41	54	44	49	11	65	43	57	47	57
12	43	47	39	55	47	65	35	48	50	37	49	50	57	46	52	12	66	50	61	53	64
13	44	52	48	56	52	67	46	50	58	48	50	58	67	47	57	13	68	60	78	73	65
14	54	54	53	58	56	72	48	52	61	52	53	62	70	48	66	14	73	62	82	78	67
15	59	60	60	62	58	76	56	53	62	58	56	66	73	55	69	15	76	65	86	81	78
16	60	64	64	60	69	79	57	55	64	59	68	75	74	61	73	16	82	72	91	82	79
17	65	67	69	63	80	61	72	73	63	73	81	78	74	74	74	17	83	76	92	85	81
18	66	68	68	70	74	81	65	77	77	70	76	84	82	80	77	18	84	77	93	89	87
19	79	69	70	75	77	83	68	78	79	84	90	86	86	86	86	19	89	80	96	91	93
20	80	82	75	77	84	85	75	79	82	81	88	92	88	94	93	20	95	96	98	93	96

Case#	R161	R162	R163	R164	R165	R166	R167	R168	R169	R170	R171	R172	R173	R174	R175
1	1	10	16	14	3	13	10	7	2	5	1	7	2	19	8
2	2	31	21	27	5	15	29	21	6	18	8	9	6	31	11
3	4	52	28	36	16	19	35	23	28	40	14	19	24	38	21
4	10	54	29	46	33	42	39	36	41	58	23	27	28	44	44
5	39	64	41	51	35	46	53	69	48	64	38	59	37	48	48
6	56	66	42	54	42	49	54	90	70	86	39	75	53	51	49
7	58	69	46	57	49	64	66	91	74	87	43	77	62	62	59
8	63	71	49	62	55	67	61	95	84	105	49	89	71	71	64
9	64	75	62	72	61	73	103	107	88	109	59	90	91	77	67
10	77	77	70	79	63	104	106	115	101	112	72	93	103	79	70
11	84	84	75	89	65	107	117	124	106	125	82	94	119	108	72
12	85	87	78	98	78	113	122	128	115	126	87	96	127	111	79
13	87	91	79	99	105	115	130	133	117	131	95	113	128	113	94
14	97	92	111	119	107	116	134	131	134	121	134	106	123	117	122
15	107	93	117	128	119	127	136	138	126	139	127	125	133	131	123
16	111	96	146	134	131	146	139	142	137	141	137	134	140	142	131
17	115	126	148	147	155	158	152	162	157	152	142	141	146	149	132
18	125	128	156	147	143	159	152	153	160	159	143	143	151	153	146
19	128	153	157	156	161	164	157	161	163	162	146	159	154	156	159
20	155	155	161	162	162	165	162	164	168	163	147	172	163	157	163

Case#	R176	R177	R178	R179	R180	R181	R182	R183	R184	R185	R186	R187	R188	R189	R190
1	5	2	2	1	1	15	1	2	8	12	6	15	1	5	4
2	19	15	5	2	15	17	8	4	9	17	10	17	6	10	10
3	20	25	9	21	17	35	15	38	16	38	15	18	13	14	27
4	22	31	11	29	27	41	19	44	17	39	28	33	15	16	33
5	29	37	13	42	37	45	28	52	26	45	39	40	30	20	37
6	45	47	22	44	40	55	52	59	54	51	53	52	44	21	45
7	67	62	52	46	58	64	65	74	66	57	88	62	61	38	49
8	68	67	69	53	73	70	72	88	73	59	91	68	63	44	56
9	73	86	76	64	78	80	73	93	75	60	92	78	82	52	71
10	80	87	80	70	104	111	74	97	82	61	97	80	85	69	82
11	91	96	81	75	116	114	78	115	85	72	112	107	91	81	119
12	99	103	88	76	117	115	80	116	90	73	116	109	104	86	122
13	110	109	94	82	118	117	98	123	120	76	126	116	119	105	128
14	126	117	101	90	119	119	99	124	133	87	130	124	120	109	134
15	129	119	106	129	142	127	120	130	148	96	151	132	123	113	139
16	133	124	114	141	144	134	122	149	151	126	153	133	138	114	146
17	137	146	133	151	153	140	143	155	167	129	159	155	143	131	148
18	140	162	136	159	164	159	163	161	168	146	167	157	148	143	164
19	154	164	142	167	167	176	164	164	175	151	168	155	153	171	167
20	155	173	154	168	176	178	171	170	180	157	182	167	160	184	187

Case#	R191	R192	R193	R194	R195	R196	R197	R198	R199	R200
1	12	5	9	11	21	2	4	4	7	4
2	22	10	12	14	22	6	14	8	9	16
3	24	13	30	17	35	12	40	27	13	38
4	45	15	42	25	39	13	53	28	32	41
5	49	23	46	32	45	18	54	41	44	43
6	55	26	56	35	54	25	78	49	66	54
7	59	35	70	37	75	42	84	77	88	56
8	60	52	73	67	75	44	85	80	117	61
9	76	57	78	70	100	58	106	89	119	68
10	109	84	88	71	109	61	111	94	130	94
11	116	86	90	72	111	65	113	95	133	96
12	120	105	92	74	113	98	122	104	139	100
13	123	123	102	83	115	111	142	105	144	105
14	148	126	104	105	132	116	172	111	146	124
15	149	132	113	117	144	133	181	151	151	130
16	150	140	118	123	154	134	182	154	170	150
17	162	152	130	128	156	160	185	166	172	151
18	169	154	152	130	162	168	194	175	174	169
19	170	160	153	135	167	173	195	196	177	172
20	184	166	173	156	173	174	196	198	182	198

Case#	R201	R202	R203	R204	R205	R206	R207	R208	R209	R210	R211	R212	R213	R214	R215
1	7	1	7	16	4	11	5	9	8	2	17	1	6	1	5
2	17	16	8	30	40	15	23	10	15	16	19	26	11	8	9
3	21	28	21	63	47	37	38	12	19	20	25	40	14	31	25
4	56	29	22	72	55	41	43	21	29	39	34	42	25	39	31
5	62	38	31	75	96	46	58	34	69	50	41	96	36	45	32
6	66	44	32	76	105	49	67	41	72	67	44	69	37	52	38
7	78	58	44	88	120	50	70	45	84	92	62	73	42	54	39
8	78	70	57	89	123	52	79	84	90	104	67	75	47	60	55
9	106	96	59	94	124	70	81	110	95	106	73	110	70	65	58
10	122	98	71	126	138	73	118	120	114	114	87	113	91	73	60
11	124	102	78	135	142	94	121	125	117	118	113	114	94	75	71
12	125	121	76	139	143	121	126	129	118	135	132	158	99	70	79
13	126	123	87	147	149	139	131	133	124	137	143	159	133	96	92
14	132	124	90	153	152	142	151	138	148	142	148	163	139	107	93
15	150	155	146	160	153	151	165	139	149	148	153	164	141	129	107
16	163	163	147	173	163	155	166	150	152	156	159	177	182	173	115
17	166	172	164	179	164	166	178	160	155	169	165	187	199	174	118
18	170	182	172	184	165	179	179	191	176	185	168	191	201	186	160
19	192	185	178	190	171	201	185	201	198	190	200	208	202	189	210
20	194	190	180	193	198	204	189	202	199	203	206	211	206	198	213

Case#	R216	R217	R218	R219	R220	R221	R222	R223	R224	R225	R226	R227	R228	R229	R230
1	10	21	14	1	2	1	10	1	5	1	10	35	2	6	3
2	12	31	31	7	5	12	18	3	13	12	14	40	5	12	7
3	16	37	32	8	11	13	20	4	35	19	47	70	36	49	24
4	20	48	34	12	15	25	24	18	41	29	66	77	44	60	28
5	23	71	37	22	68	51	25	37	46	32	71	78	55	78	33
6	43	79	46	86	75	54	29	54	50	78	79	56	85	75	
7	51	102	54	87	83	60	31	57	55	70	102	137	57	100	88
8	53	109	65	74	113	86	72	77	64	101	108	138	65	110	121
9	72	125	69	108	98	98	75	81	81	126	111	139	79	114	126
10	87	127	79	122	108	103	82	101	120	135	120	152	82	121	131
11	120	147	92	124	124	139	104	115	126	152	125	166	83	123	136
12	124	158	104	152	132	158	116	122	141	164	132	172	92	126	137
13	140	163	116	157	147	175	118	128	155	167	135	173	109	144	139
14	142	164	119	164	150	184	122	144	156	173	142	176	126	151	143
15	146	170	135	169	159	185	131	152	159	179	147	179	152	162	148
16	169	185	166	186	143	182	171	167	171	184	166	163	182		
17	171	188	139	180	168	188	148	196	183	210	189	196	173	177	201
18	176	199	145	205	171	193	167	199	213	203	200	179	178	209	
19	186	203	159	206	197	217	174	207	205	214	218	214	203	217	218
20	199	214	165	219	209	219	210	216	216	225	219	219	205	224	221

Case#	R301	R302	R303	R304	R305	R306	R307	R308	R309	R310	R311	R312	R313	R314	R315
1	27	36	11	8	6	4	5	6	14	2	6	12	8	8	4
2	35	37	31	16	36	26	28	10	45	14	9	59	13	16	9
3	40	50	60	23	42	35	50	12	50	17	20	68	76	23	21
4	45	57	62	51	45	36	75	28	73	22	21	99	79	42	40
5	53	87	69	113	47	82	96	76	82	62	33	104	103	43	41
6	78	88	78	117	63	86	107	128	109	75	39	106	128	54	72
7	92	90	79	134	65	115	118	132	112	86	48	107	132	75	88
8	115	95	92	139	68	141	133	134	123	91	51	109	151	94	92
9	151	99	100	155	104	142	141	150	124	111	54	110	165	102	118
10	179	121	104	162	109	147	145	155	140	132	55	123	184	127	133
11	198	134	158	167	126	179	149	183	142	143	57	127	225	130	148
12	200	152	182	204	134	189	170	187	148	144	90	146	229	138	163
13	203	153	184	219	157	201	175	203	154	167	97	174	234	172	183
14	205	173	186	231	171	205	177	206	183	170	148	182	236	186	184
15	216	175	198	250	191	212	200	213	188	181	187	189	237	203	191
16	218	184	208	252	209	223	206	218	240	269	203	228	246	206	200
17	224	210	234	258	214	252	210	236	253	279	206	261	261	235	201
18	227	248	236	270	220	253	278	242	295	283	248	282	264	259	227
19	236	261	280	276	233	258	279	247	299	297	259	289	274	293	246
20	263	282	302	294	280	300	292	302	308	301	274	290	292	304	280

Case#	R316	R317	R318	R319	R320	R321	R322	R323	R324	R325	R326	R327	R328	R329	R330
1	42	12	87	5	6	29	21	13	38	26	90	15	7	15	10
2	50	40	89	14	19	82	60	25	82	47	103	77	24	51	27
3	63	50	102	15	50	84	69	37	89	50	117	79	30	55	30
4	102	105	108	84	53	87	98	40	93	55	123	100	65	60	33
5	123	118	112	99	80	112	122	66	94	61	128	105	79	61	34
6	135	153	120	126	83	137	127	102	124	89	134	106	91	62	35
7	141	164	132	127	92	152	129	105	140	109	148	110	94	98	40
8	165	174	137	131	99	167	165	112	154	116	151	123	105	108	48
9	177	234	140	143	128	179	222	121	159	123	167	131	126	109	61
10	184	244	155	148	130	197	232	156	197	127	175	154	134	118	81
11	189	252	164	159	136	202	233	198	241	172	217	173	193	130	146
12	205	268	174	212	146	204	244	203	256	177	219	184	211	161	168
13	219	269	193	228	151	209	255	208	267	185	224	206	213	166	188
14	248	294	194	249	152	223	256	213	273	195	254	224	224	187	198
15	283	297	221	251	223	225	285	230	281	215	255	255	261	204	205
16	285	299	248	273	241	232	300	239	301	233	275	234	275	228	212
17	289	304	253	280	260	259	304	256	305	234	287	246	276	257	244
18	290	309	270	292	282	266	306	263	306	265	298	269	283	279	266
19	295	314	311	299	283	278	308	275	314	296	320	300	290	295	267
20	311	317	313	308	303	291	321	318	321	313	321	316	319	308	294

Case#	R331	R332	R333	R334	R335	R336	R337	R338	R339	R340	R341	R342	R343	R344	R345
1	9	4	6	15	7	24	11	10	8	15	28	18	21	10	4
2	17	11	27	27	13	52	21	11	48	28	35	34	42	30	10
3	34	21	40	61	39	74	47	28	64	34	40	36	51	35	27
4	53	34	88	86	41	78	54	31	67	49	41	45	63	54	79
5	65	37	99	96	89	66	33	87	82	60	47	66	65	91	
6	72	60	139	115	88	107	89	39	127	84	66	73	72	76	98
7	75	67	164	123	96	122	98	64	171	141	71	104	73	78	113
8	118	75	171	125	111	129	136	90	178	148	84	113	91	112	124
9	170	116	176	137	120	139	157	94	194	149	144	117	98	120	131
10	187	130	218	157	123	161	197	97	202	174	157	144	115	138	154
11	191	140	230	167	125	171	206	134	234	224	193	147	162	146	182
12	232	208	232	184	168	176	225	141	244	225	219	171	188	151	198
13	246	228	235	191	229	207	230	154	262	226	226	173	241	166	199
14	249	240	240	243	258	226	231	171	266	260	232	228	254	169	205
15	260	261	241	264	265	266	238	210	276	274	249	258	261	196	273
16	265	288	274	273	283	275	258	213	277	283	253	264	265	201	278
17	297	300	302	298	284	278	297	281	288	310	264	275	275	202	288
18	307	301	310	301	287	279	308	321	293	317	318	282	294	321	313
19	319	323	317	310	289	299	313	329	298	334	326	313	318	341	339
20	321	326	333	320	315	316	328	333	319	335	331	329	330	344	341

Case#	R346	R347	R348	R349	R350	R351	R352	R353	R354	R355	R356	R357	R358	R359	R360
1	6	2	9	22	4	8	21	18	3	25	6	5	42	2	33
2	9	66	95	23	18	28	26	39	4	39	25	15	55	22	56
3	41	78	98	33	28	37	33	40	5	73	34	36	71	48	82
4	69	89	104	45	28	50	38	91	21	79	58	43	85	82	86
5	73	105	111	84	61	55	58	100	22	95	90	59	161	90	98
6	76	119	128	92	99	77	66	112	93	123	162	64	163	91	111
7	81	123	144	126	113	90	81	124	100	147	180	81	194	98	114
8	96	130	147	127	117	91	119	125	114	162	184	101	220	104	156
9	119	138	155	140	146	97	131	155	123	171	187	104	227	116	167
10	152	178	177	162	150	113	164	160	136	218	188	131	268	206	176
11	165	262	200	172	159	138	193	176	139	219	195	134	272	209	177
12	166	263	209	177	179	157	196	179	153	222	196	156	279	216	223
13	190	268	215	186	222	211	212	216	201	239	213	174	287	222	248
14	199	275	257	193	231	264	263	224	212	245	216	238	291	224	279
15	220	288	280	248	234	266	278	272	269	280	225	268	294	264	286
16	234	304	288	263	260	270	281	275	272	301	228	282	301	268	308
17	252	328	291	296	298	302	292	301	307	304	241	283	316	272	329
18	268	334	295	321	299	312	295	336	330	328	291	294	317	278	335
19	279	342	307	337	317	329	320	338	346	337	294	332	324	333	340
20	321	346	320	345	340	347	335	350	350	353	356	342	326	359	360

Case#	R361	R362	R363	R364	R365	R366	R367	R368	R369	R370	R371	R372	R373	R374	R375
1	5	36	64	2	40	36	15	1	30	44	3	15	6	1	6
2	26	59	71	15	62	46	26	8	33	56	18	24	20	7	8
3	38	66	89	40	64	86	27	17	42	90	42	33	24	11	16
4	39	81	109	49	85	133	38	71	71	98	66	108	40	14	35
5	42	82	114	84	96	154	51	100	75	115	80	112	79	37	38
6	55	109	123	92	106	170	54	122	136	121	87	126	88	56	57
7	67	111	140	109	148	198	85	133	143	124	127	144	117	112	80
8	91	121	149	172	153	207	129	145	154	125	129	151	130	125	81
9	102	134	179	187	154	223	148	149	167	132	144	182	137	155	112
10	155	136	229	193	168	255	238	159	185	148	164	195	167	176	140
11	192	142	238	194	189	262	243	163	191	168	176	199	186	223	200
12	254	177	240	199	190	279	250	177	208	179	235	203	198	237	204
13	262	178	243	208	200	289	262	217	212	246	243	221	210	266	252
14	263	201	256	279	241	293	283	236	220	277	260	233	249	276	257
15	283	206	257	300	252	307	285	278	267	311	277	234	273	285	260
16	287	251	294	308	286	308	279	277	286	313	279	246	283	287	261
17	292	262	314	324	302	323	306	294	319	315	288	262	302	300	344
18	296	277	315	327	317	335	347	309	347	348	309	347	348	347	348
19	318	309	339	362	319	339	355	314	331	327	311	348	355	321	356
20	344	353	358	364	336	351	363	358	355	354	355	369	357	346	368

Case#	R376	R377	R378	R379	R380	R381	R382	R383	R384	R385	R386	R387	R388	R389	R390
1	1	28	21	7	21	3	9	41	8	6	7	12	9	37	6
2	6	38	42	39	32	40	187	52	20	39	24	13	29	71	12
3	22	24	33	59	44	27	44	44	93	24	34	34	34	34	34
4	36	70	54	59	40	47	108	94	49	76	80	32	97	92	73
5	104	77	56	51	40	174	110	96	51	77	81	49	128	104	83
6	126	86	51	52	34	126	106	108	127	54	93	37	140	114	93
7	126	101	123	82	75	224	130	113	61	121	104	89	145	136	179
8	134	120	128	111	86	237	154	124	73	132	105	112	155	139	204
9	152	122	133	113	115	266	156	156	78	148	137	114	185	150	218
10	155	136	229	193	168	255	238	159	185	148	164	195	167	176	140
11	173	144	147	159	155	278	187	193	121	227	165	178	204	178	220
12	184	167	150	168	171	306	228	209	157	237	213	183	226	196	236
13	185	196	151	169	195	307	245	231	161	257	217	211	236	271	242
14	215	281	178	172	213	335	247	252	213	313	236	231	262	276	327
15	233	299	184	183	268	336	258	259	218	334	254	233	290	296	348
16	241	318	226	216	371	342	261	296	263	355	293	244	347	306	353
17	254	321	276	220	286	343	291	326	274	336	293	247	354	346	354
18	269	339	275	249	306	349	309	275	309	349	309	261	358	346	358
19	306	344	314	333	288	366	307	374	288	344	323	348	381	384	371
20	313	375	349	371	349	371	357	383	379	356	330	356	383	389	390

Appendix B(ii): Random Number Tables for the Selection of 40 Grade Six Students Within Each Selected School

Case# R41 R42 R43 R44 R45 R46 R47 R48 R49 R50	Case# R51 R52 R53 R54 R55 R56 R57 R58 R59 R60 R61 R62 R63 R64 R65
1 1 1 1 1 1 1 1 1 2	1 2 1 1 1 1 1 1 1 3 1 1 2 1 4
2 2 2 2 2 2 2 2 2 4	2 4 2 2 2 2 2 2 2 3 3 4 2 2 3 2 5
3 3 3 3 3 3 3 3 3 5	3 5 3 3 3 4 3 3 4 7 7 3 3 4 5 6
4 4 4 4 4 5 4 4 4 6	4 6 4 4 4 5 7 4 5 8 8 5 5 6 6 7
5 5 5 5 5 6 5 5 5 6	5 7 6 5 6 6 8 5 6 10 10 10 7 8 7 9
6 6 6 6 6 7 7 6 7 7 9	6 8 7 7 7 7 9 6 7 11 11 11 10 10 10 10
7 7 7 7 7 9 8 7 8 8 10	7 10 8 8 8 8 10 7 8 13 12 12 11 12 11
8 8 8 8 8 10 9 8 9 9 11	8 11 10 9 9 10 13 9 11 14 14 13 12 12 13 13
9 9 10 9 9 11 11 11 10 10 12	9 12 12 10 11 11 15 14 12 15 15 14 13 15 14 15
10 10 11 10 10 12 12 12 11 11 13	10 14 13 11 12 12 16 17 17 19 18 15 14 16 15 16
11 11 12 11 11 13 13 14 12 12 14	11 15 14 13 14 13 17 20 19 21 22 19 15 18 16 17
12 12 13 12 14 14 17 13 14 15	12 16 15 14 15 15 18 21 21 22 23 22 18 19 17 18
13 13 14 13 13 15 16 18 14 15 16	13 17 16 15 16 16 20 22 22 23 24 23 20 20 20 20
14 14 15 14 14 16 17 19 15 16 17	14 20 17 16 18 17 22 23 23 24 25 24 21 21 22 21
15 15 16 15 15 17 18 22 16 17 18	15 23 19 17 20 19 23 25 25 25 25 22 22 23 22
16 16 17 16 16 18 19 23 17 18 19	16 24 20 18 21 21 25 26 26 27 28 26 23 24 25 23
17 17 18 17 17 19 21 24 18 19 20	17 26 22 20 22 22 27 27 27 28 29 27 24 26 27 26
18 18 19 18 18 20 22 25 19 20 21	18 27 23 21 23 23 28 28 29 30 31 28 26 30 28 28
19 19 20 19 20 21 24 26 20 21 22	19 28 24 24 24 24 29 31 33 31 33 29 27 31 33 29
20 20 21 21 21 22 25 27 21 22 24	20 29 25 25 25 25 30 32 34 32 34 31 29 32 34 30
21 21 22 22 22 23 26 28 22 23 25	21 30 26 26 26 27 31 33 36 33 35 32 31 33 35 31
22 22 23 23 23 24 27 29 23 26 27	22 32 28 28 33 30 34 36 38 38 34 35 37 39 34
23 23 24 25 24 25 28 30 24 27 28	23 32 28 28 33 30 34 36 38 38 34 35 37 39 34
24 24 25 26 25 26 29 31 25 28 29	24 34 29 29 34 32 35 37 39 37 39 35 37 38 43 35
25 25 26 27 26 27 30 32 26 29 30	25 35 30 30 35 34 36 38 40 38 40 37 39 44 44 36
26 26 27 28 27 28 31 33 27 30 31	26 36 33 31 36 35 37 39 41 39 42 38 41 45 45 37
27 27 28 29 29 32 34 28 31 32	27 37 34 32 37 36 38 41 42 41 43 39 42 46 47 40
28 28 29 31 29 31 33 35 30 32 33	28 38 35 34 38 38 39 42 44 42 45 41 44 47 48 41
29 29 30 32 30 32 34 36 31 33 34	29 39 36 35 39 39 40 43 45 43 47 46 46 48 50 42
30 30 31 33 31 34 35 37 32 34 35	30 40 37 37 40 40 41 44 46 44 48 48 47 51 51 45
31 31 32 34 32 35 38 33 35 37	31 41 39 38 41 41 42 45 47 45 49 49 48 53 52 49
32 33 33 35 33 36 37 39 34 36 39	32 42 41 39 42 42 43 46 48 46 50 49 54 54 54 50
33 34 34 36 34 37 38 40 36 37 40	33 43 42 40 43 45 44 49 49 48 51 53 50 55 55 53
34 35 35 37 35 38 39 41 37 38 41	34 44 43 41 46 46 46 50 51 49 52 54 51 57 56 56
35 36 36 38 36 39 40 42 40 43	35 45 44 42 47 47 47 51 52 50 53 55 52 58 57 58
36 37 37 39 37 40 41 43 41 41 45	36 47 47 46 48 49 49 52 53 51 55 56 53 59 58 59
37 38 38 40 39 42 42 44 42 43 46	37 48 47 49 50 52 53 54 54 56 57 54 60 60 60 60
38 39 40 41 40 43 43 45 43 46 47	38 49 50 48 50 52 53 54 55 55 57 58 59 61 61 62
39 40 41 42 41 44 45 46 44 47 48	39 50 51 49 51 53 54 56 56 58 59 60 60 62 62 63
40 41 42 43 42 45 46 47 46 49 49	40 51 52 50 54 55 55 57 58 59 60 61 61 63 63 64

Case# R66 R67 R68 R69 R70 R71 R72 R73 R74 R75 R76 R77 R78 R79 R80	Case# R81 R82 R83 R84 R85 R86 R87 R88 R89 R90 R91 R92 R93 R94 R95
1 1 1 3 1 2 6 1 1 1 2 3 2 4 2 1	1 6 2 4 1 1 1 1 1 1 1 2 1 2 1 1
2 2 3 4 2 3 9 2 2 3 6 4 3 5 3 2	2 11 5 6 9 2 2 4 2 2 4 3 2 9 2 12
3 3 4 5 3 6 10 6 5 4 7 8 4 7 5 3	3 16 6 7 10 6 6 7 3 3 5 7 4 10 13 15
4 4 6 7 4 7 11 8 7 5 9 10 6 8 6 6	4 18 7 9 11 9 7 11 4 5 11 10 10 13 14 19
5 5 7 11 6 8 12 9 12 9 11 11 7 10 7 7	5 19 8 11 12 10 8 13 6 11 13 11 11 14 21 20
6 7 9 12 7 9 13 11 13 12 13 14 9 13 8 9	6 20 9 15 13 13 9 14 7 12 14 13 14 16 22 21
7 8 10 13 10 12 18 12 15 13 15 16 12 14 9 13	7 21 12 16 15 16 12 16 10 13 17 14 17 19 26 22
8 9 11 14 11 13 19 14 19 14 16 19 14 15 10 16	8 24 13 23 20 20 15 17 11 16 21 15 18 22 29 23
9 10 13 15 12 15 20 15 20 16 18 20 15 16 11 18	9 25 18 24 24 25 17 20 17 22 22 16 19 23 30 24
10 11 14 18 13 18 21 17 21 17 22 21 17 17 12 19	10 26 20 27 25 26 21 23 19 27 25 17 20 25 32 25
11 12 15 20 14 19 24 19 24 19 23 22 18 18 13 21	11 27 22 29 26 28 23 24 21 30 26 18 22 28 34 27
12 13 19 24 15 21 25 21 25 22 24 23 19 20 16 23	12 29 23 30 27 32 25 25 22 31 27 19 24 33 35 28
13 14 21 25 18 23 26 22 26 23 25 26 21 21 17 26	13 30 24 31 31 33 27 27 24 32 28 21 27 37 38 29
14 15 22 26 19 27 28 23 29 25 30 27 24 23 18 27	14 32 25 32 33 34 29 29 28 36 30 23 28 39 41 30
15 18 23 28 23 28 32 24 30 26 33 28 25 25 19 28	15 33 30 33 36 39 34 34 30 37 33 24 37 42 42 32
16 20 27 29 24 31 33 26 32 27 34 29 28 27 26 30	16 36 34 34 38 40 35 35 34 39 34 25 38 44 43 33
17 21 28 33 29 32 38 27 33 28 36 30 29 31 28 32	17 38 35 38 41 41 37 36 39 42 35 28 40 45 47 36
18 25 29 34 33 33 40 32 35 29 40 32 30 33 30 34	18 39 38 39 42 43 44 37 40 43 40 33 43 46 49 41
19 31 31 36 35 34 42 32 37 30 41 33 31 34 32 36	19 41 39 41 43 45 45 41 41 47 41 34 47 47 53 45
20 32 32 37 36 36 46 36 40 31 42 34 34 35 33 39	20 43 40 43 44 46 48 42 42 49 43 36 48 48 54 49
21 33 33 41 37 37 48 38 41 32 44 35 35 40 34 40	21 44 41 44 45 51 49 43 43 51 44 43 49 50 57 51
22 35 36 42 39 39 49 41 44 33 45 37 37 43 35 41	22 45 44 47 47 52 50 45 45 54 45 44 50 51 60 52
23 36 38 43 41 40 50 42 46 34 46 40 38 46 36 45	23 46 45 48 48 54 51 48 47 58 46 48 51 57 62 54
24 37 44 44 42 42 51 43 47 36 47 41 40 48 49 48	24 47 46 50 49 55 52 49 52 59 52 51 52 58 63 58
25 40 46 45 43 44 52 45 49 40 50 43 44 51 51 49	25 48 48 52 52 58 53 51 53 65 55 52 53 60 67 59
26 41 47 46 44 46 53 46 50 41 51 44 46 53 55 53	26 50 50 54 54 61 54 53 55 68 59 58 56 62 68 60
27 43 48 47 45 50 54 50 51 46 52 45 48 55 57 54	27 52 51 55 55 62 55 56 56 69 62 61 57 64 69 63
28 46 50 48 47 51 55 51 52 47 56 46 49 57 59 55	28 55 53 56 58 64 57 58 61 70 63 62 58 65 71 64
29 48 52 49 49 52 56 53 54 49 57 48 50 62 60 56	29 56 56 57 61 67 58 60 65 71 66 67 64 71 72 66
30 49 55 52 51 53 59 55 55 50 58 52 52 63 61 58	30 59 59 58 63 68 63 61 66 72 70 69 66 73 73 68
31 51 56 53 52 55 61 57 56 51 60 53 53 65 64 60	31 61 61 60 64 69 68 62 67 74 71 73 67 74 81 70
32 52 57 56 53 56 62 59 58 53 61 56 55 67 65 61	32 62 62 62 66 73 69 66 68 76 75 74 68 76 82 71
33 54 58 57 54 57 63 62 60 54 63 57 59 68 66 62	33 66 64 63 67 75 71 68 73 78 76 78 69 78 83 72
34 55 59 58 56 58 64 63 61 60 65 59 60 69 68 63	34 67 67 66 68 76 72 70 75 79 78 80 71 80 84 73
35 56 60 59 57 60 65 65 62 61 66 61 64 73 70 65	35 68 68 67 69 78 76 74 79 80 79 82 72 83 86 76
36 57 61 62 58 62 66 67 68 63 70 67 65 74 73 66	36 69 73 70 74 80 77 76 82 82 80 83 75 84 87 79
37 58 62 63 62 66 67 68 69 67 71 70 67 75 75 71	37 71 75 76 75 81 78 78 84 83 81 84 77 85 88 84
38 61 63 64 63 67 68 69 70 68 72 71 71 76 77 73	38 78 76 77 76 82 84 82 85 84 83 88 84 87 89 86
39 63 65 66 65 68 69 70 71 69 73 74 75 77 78 75	39 79 78 81 81 83 85 84 86 85 84 89 89 90 90 90
40 65 67 67 68 70 70 72 73 72 75 75 76 78 79 79	40 80 80 83 84 85 86 87 88 88 90 90 90 91 92 93

Case# R96 R97 R98 R99 R100

1	3	1	4	1	1
2	4	5	12	6	2
3	5	8	14	7	3
4	6	10	17	10	5
5	9	11	22	12	6
6	10	13	23	14	9
7	15	16	24	15	12
8	19	19	26	19	13
9	21	20	27	22	15
10	25	22	30	24	19
11	26	23	33	25	20
12	27	27	36	29	21
13	29	30	37	31	22
14	31	34	40	34	23
15	33	37	42	35	24
16	34	40	47	38	31
17	37	41	48	39	33
18	40	44	49	40	36
19	42	45	50	44	40
20	44	46	52	46	45
21	45	48	54	53	47
22	47	49	55	54	48
23	48	54	59	59	51
24	50	56	61	62	55
25	51	57	63	63	57
26	52	61	69	67	58
27	64	65	71	69	60
28	65	66	72	70	61
29	66	68	73	75	67
30	67	70	74	77	69
31	69	73	79	79	70
32	71	74	80	80	75
33	75	81	81	79	9
34	81	76	82	82	81
35	85	78	84	83	89
36	87	80	85	84	92
37	89	82	88	85	96
38	94	88	89	86	97
39	95	91	91	89	98
40	96	93	92	92	100

Case# R101 R102 R103 R104 R105 R106 R107 R108 R109 R110 R111 R112 R113 R114 R115

1	2	6	2	2	1	1	2	5	5	3	1	3	3	2	1
2	3	7	4	3	2	4	14	7	10	6	4	7	4	3	3
3	4	10	5	5	4	6	15	9	12	7	8	9	5	9	6
4	5	11	7	9	7	10	17	10	13	9	9	12	9	12	7
5	6	16	9	10	10	11	24	13	14	10	11	13	13	13	9
6	7	19	13	16	11	13	25	18	20	13	14	15	12	14	12
7	9	22	22	18	14	14	27	19	21	14	18	17	13	19	21
8	11	23	23	20	17	19	28	21	23	17	21	22	15	25	24
9	14	25	24	22	18	21	29	24	25	18	25	27	17	32	26
10	19	29	27	24	22	22	32	25	26	19	27	33	19	34	27
11	20	31	32	26	24	25	33	28	27	21	31	35	24	37	30
12	30	36	33	27	26	27	34	32	30	22	39	42	32	39	32
13	31	37	34	32	27	29	35	33	39	23	40	46	33	40	34
14	32	38	35	38	30	34	37	36	41	29	47	53	34	41	38
15	33	44	38	45	33	35	38	37	45	30	49	54	37	49	40
16	34	46	39	46	35	36	39	39	46	34	51	59	38	53	41
17	36	49	48	49	36	38	40	43	51	35	55	60	42	55	44
18	37	50	50	50	40	40	42	46	54	36	56	61	44	56	46
19	46	51	55	51	42	41	50	48	55	38	62	62	46	57	48
20	47	57	58	54	43	44	53	54	57	47	65	65	51	59	51
21	53	58	59	60	51	48	55	60	58	50	68	66	52	62	52
22	55	63	63	61	52	50	56	61	61	51	69	72	53	64	53
23	56	64	65	62	53	56	57	62	62	53	71	74	55	68	54
24	59	67	67	64	56	57	60	64	63	57	74	75	56	69	56
25	61	70	68	67	60	62	62	67	65	61	77	76	57	77	62
26	67	72	70	70	70	63	65	69	68	67	80	78	60	78	74
27	71	73	72	72	71	66	68	73	74	70	83	81	73	79	77
28	72	74	75	73	74	71	71	77	79	72	84	84	75	80	82
29	77	77	78	75	75	72	75	82	80	73	85	86	76	86	90
30	78	78	82	77	77	81	77	83	83	77	86	88	78	88	91
31	81	81	83	79	79	85	81	88	85	80	87	89	80	89	93
32	84	82	86	80	83	87	82	89	92	82	89	92	84	91	94
33	85	83	89	82	84	89	84	90	94	83	93	94	88	95	96
34	88	85	90	87	87	90	87	91	99	92	95	95	90	100	101
35	89	88	91	91	89	91	91	95	102	95	99	97	93	102	103
36	92	89	94	91	91	92	92	96	103	96	102	98	101	104	104
37	96	92	95	95	93	96	95	98	104	101	106	102	103	105	105
38	97	97	98	97	94	98	101	100	106	107	109	105	104	109	110
39	98	98	100	99	95	99	106	101	108	108	110	109	105	111	111
40	101	102	103	101	104	104	107	108	109	110	111	110	111	113	114

Case# R116 R117 R118 R119 R120 R121 R122 R123 R124 R125 R126 R127 R128 R129 R130

1	1	4	2	1	4	4	1	2	2	1	7	5	4	2	3
2	2	18	8	3	7	5	4	3	4	2	9	7	6	3	5
3	4	19	15	5	19	6	5	5	3	10	9	10	5	6	
4	5	23	16	6	29	9	7	8	7	13	13	11	14	6	12
5	9	29	19	7	30	13	9	12	8	14	14	13	20	13	17
6	10	35	23	8	32	14	11	16	9	16	27	18	24	15	21
7	11	43	25	10	39	20	15	17	14	19	28	21	29	21	22
8	12	44	29	11	40	28	19	20	16	21	31	22	37	22	25
9	13	49	31	14	43	30	20	22	18	27	32	29	38	26	28
10	14	51	32	17	45	31	22	31	23	29	33	33	40	35	34
11	16	53	35	18	46	35	23	35	30	32	36	34	41	38	36
12	23	54	37	21	50	36	27	36	34	33	37	35	42	43	38
13	25	57	39	22	54	39	30	37	37	37	38	37	44	44	42
14	28	60	45	23	57	48	33	46	39	38	39	38	57	47	49
15	36	63	47	26	60	49	37	47	41	42	45	41	59	51	50
16	37	64	48	27	61	51	44	49	43	46	46	49	62	54	51
17	38	65	51	28	63	54	47	53	54	47	49	50	63	62	53
18	44	68	52	32	64	56	49	54	58	52	48	55	53	69	59
19	52	71	53	35	68	59	50	56	58	52	56	55	70	67	64
20	54	77	56	37	69	62	51	57	61	55	57	56	77	69	70
21	55	82	60	42	76	63	60	59	64	56	59	68	84	72	71
22	56	83	64	43	83	64	71	65	65	63	60	72	85	73	74
23	58	84	67	44	85	67	72	66	66	65	61	75	88	74	76
24	59	85	72	46	87	68	74	69	70	66	62	76	89	76	78
25	73	89	76	47	88	69	77	70	72	69	63	78	90	79	80
26	74	94	78	49	89	71	80	72	74	77	64	79	91	80	87
27	77	96	82	53	91	73	82	80	76	79	68	86	93	83	92
28	79	97	86	55	92	74	84	83	80	96	71	90	99	88	102
29	83	98	88	57	94	75	85	84	81	98	76	93	101	92	109
30	86	99	89	64	96	86	86	89	82	101	78	95	103	94	110
31	90	101	91	66	97	88	89	90	85	102	83	96	104	96	114
32	97	102	92	72	103	92	96	93	91	104	87	100	106	101	121
33	101	103	96	75	105	93	97	97	96	110	88	101	109	109	122
34	102	105	98	83	106	96	107	100	102	112	89	102	112	110	123
35	106	107	101	84	113	98	111	102	107	117	96	109	114	111	124
36	108	108	106	89	114	106	113	105	114	119	103	114	116	113	125
37	109	113	110	92	115	111	114	114	116	121	104	115	118	116	127
38	111	115	111	98	117	112	115	115	118	122	112	116	121	119	128
39	114	116	115	103	118	116	118	119	119	124	117	124	122	123	129
40	115	117	118	104	119	119	119	123	121	125	126	127	124	124	130

Case# R131 R132 R133 R134 R135 R136 R137 R138 R139 R140 R141 R142 R143 R144 R145

1	5	1	2	2	3	5	5	6	2	5	4	3	3	2	1
2	8	2	3	4	12	9	6	8	8	6	6	6	5	3	4
3	11	7	7	5	25	16	7	14	10	8	9	7	6	4	5
4	14	8	8	6	27	18	8	15	11	10	13	9	8	6	11
5	24	9	10	9	31	28	17	19	16	17	16	13	14	10	14
6	26	14	12	10	32	31	18	22	19	19	17	14	18	14	15
7	34	18	15	13	37	33	25	27	24	21	19	16	25	18	16
8	36	19	18												

Case# R146 R147 R148 R149 R150 R151 R152 R153 R154 R155 R156 R157 R158 R159 R160															
1	1	4	3	1	4	4	6	1	2	2	1	1	5	6	3
2	9	10	6	2	17	6	10	2	3	15	9	3	7	9	6
3	16	14	7	3	21	8	15	4	11	18	14	5	8	17	12
4	22	16	9	5	22	9	17	16	12	20	16	6	12	19	24
5	27	22	15	7	28	15	19	21	16	32	21	8	21	20	27
6	28	24	21	8	29	17	26	25	17	33	28	13	33	30	30
7	34	25	23	11	35	18	27	26	22	34	31	26	34	34	31
8	36	31	25	16	38	19	28	36	30	37	32	31	40	35	38
9	37	32	31	18	47	21	32	40	35	38	40	32	49	38	41
10	42	33	33	19	49	26	33	48	41	43	45	34	53	42	43
11	46	35	37	27	55	27	41	50	44	49	46	42	54	47	44
12	47	51	41	31	56	30	44	52	47	50	52	49	55	48	45
13	50	53	42	34	59	36	45	57	51	53	56	54	58	56	54
14	51	56	43	39	62	38	46	58	52	69	57	57	61	59	57
15	52	57	48	42	70	45	48	62	55	79	62	66	62	64	65
16	54	64	50	43	71	52	51	65	56	82	67	67	64	72	68
17	56	65	54	44	76	58	58	69	61	87	68	78	66	74	70
18	65	72	55	49	78	68	60	71	63	89	72	80	70	75	76
19	68	73	58	53	79	75	62	73	65	90	73	81	73	79	79
20	69	74	62	56	82	78	63	74	71	93	79	82	75	81	80
21	70	75	69	59	90	80	64	78	73	95	81	86	77	84	81
22	75	77	70	61	92	90	67	79	76	97	85	90	79	85	85
23	80	82	71	63	95	92	75	81	77	99	88	91	85	87	86
24	81	84	73	73	100	93	79	84	78	106	90	92	88	88	98
25	85	90	76	77	105	94	80	94	80	107	98	94	94	98	100
26	89	101	87	78	107	98	81	101	89	109	100	99	97	104	104
27	91	106	95	80	108	100	86	103	91	112	102	104	101	106	105
28	100	107	100	81	110	101	87	105	101	113	105	112	105	108	107
29	103	108	105	92	117	108	88	106	104	116	108	113	107	115	108
30	108	114	116	100	120	109	90	108	105	122	111	117	110	123	110
31	113	116	121	103	126	120	102	114	110	125	117	118	113	124	113
32	120	117	125	112	130	122	103	118	117	127	124	121	124	126	118
33	122	119	128	113	131	124	115	125	123	128	125	122	127	128	120
34	123	120	130	125	132	130	116	132	124	130	132	127	128	134	125
35	124	126	134	135	140	131	122	136	125	137	135	129	130	138	129
36	126	130	135	136	141	135	126	137	127	138	140	134	132	140	145
37	130	132	138	137	143	136	132	138	129	140	142	145	140	142	148
38	139	133	141	138	144	137	133	142	132	143	144	147	146	144	149
39	140	137	144	146	145	141	137	148	145	151	146	151	147	155	151
40	146	145	146	147	148	150	151	151	147	153	152	154	157	158	160

Case# R161 R162 R163 R164 R165 R166 R167 R168 R169 R170 R171 R172 R173 R174 R175															
1	1	3	1	5	3	3	10	1	3	2	1	2	1	1	4
2	9	7	10	7	6	4	20	3	13	3	5	5	6	6	5
3	11	9	12	8	8	11	21	8	18	6	16	8	16	8	10
4	13	11	17	14	13	14	24	17	24	11	17	10	15	26	7
5	15	13	31	16	14	18	32	24	26	22	20	11	19	27	12
6	16	14	32	17	18	22	33	44	29	26	28	30	35	33	16
7	28	37	33	21	19	23	36	45	42	34	31	31	37	35	19
8	32	38	35	28	21	24	37	47	44	37	47	44	37	49	33
9	33	46	36	40	23	28	41	49	45	47	50	35	54	40	26
10	38	48	39	43	25	29	43	54	51	51	56	39	55	56	29
11	39	55	43	44	33	33	44	55	52	54	57	40	60	60	37
12	44	56	45	47	34	41	50	62	53	58	60	43	61	61	48
13	48	57	55	48	35	42	56	65	61	60	61	47	63	65	53
14	49	62	59	50	39	45	64	79	66	69	65	68	64	66	57
15	50	64	66	52	48	52	65	80	74	73	66	69	69	68	58
16	53	67	67	67	51	54	73	81	79	74	72	75	71	70	60
17	54	68	69	68	53	55	75	83	80	80	73	78	72	73	63
18	57	72	70	69	57	61	83	87	82	88	79	83	73	74	67
19	60	73	74	75	59	63	85	91	84	91	80	85	75	79	68
20	62	80	75	76	63	65	90	92	101	97	82	87	82	80	78
21	63	87	76	80	65	69	92	93	104	100	83	90	83	82	84
22	69	103	78	81	69	70	95	96	106	101	93	91	90	85	85
23	81	104	82	85	72	71	96	109	111	102	94	93	92	93	88
24	84	109	84	87	74	73	102	113	113	103	99	97	95	94	89
25	87	110	86	90	81	74	104	117	115	105	101	104	103	96	91
26	88	116	90	101	89	75	109	118	121	107	103	105	106	98	93
27	92	117	95	105	92	76	113	120	122	114	108	112	116	104	102
28	99	119	106	106	94	77	121	121	124	113	113	116	119	110	116
29	111	123	112	108	95	85	126	124	125	119	127	118	135	111	117
30	114	129	113	114	97	90	130	126	128	127	135	123	136	115	118
31	120	133	117	115	112	91	135	141	129	130	141	125	138	126	127
32	123	135	123	121	114	114	136	142	130	131	143	130	144	127	131
33	129	137	129	131	135	117	142	144	135	132	145	148	146	128	133
34	142	142	132	135	142	127	148	148	146	142	147	151	148	129	138
35	145	144	134	136	142	128	155	149	139	142	149	147	152	135	140
36	146	145	139	147	151	136	157	155	143	151	159	158	159	137	157
37	147	147	152	148	155	146	162	159	152	145	160	164	151	160	157
38	151	147	155	153	162	148	163	157	155	148	165	169	162	169	169
39	157	159	160	158	149	164	164	164	157	168	160	166	171	156	171
40	161	161	160	162	161	165	166	167	168	169	163	168	172	168	172

Case# R176 R177 R178 R179 R180 R181 R182 R183 R184 R185 R186 R187 R188 R189 R190															
1	4	7	7	1	2	1	1	3	1	2	3	3	4	4	6
2	8	9	8	2	3	7	3	6	5	8	7	4	4	7	7
3	9	11	9	13	5	12	9	13	8	15	12	7	11	8	17
4	10	26	14	38	7	13	12	16	13	21	22	10	12	15	20
5	14	29	15	42	8	16	13	17	12	25	21	21	11	12	41
6	15	39	32	45	10	18	21	20	18	26	26	28	15	22	27
7	18	47	36	50	14	22	23	24	26	30	41	29	20	25	28
8	19	59	38	52	20	25	20	25	47	32	42	30	22	28	40
9	21	64	41	30	31	31	34	38	35	43	46	32	30	34	41
10	26	65	50	57	42	34	39	36	57	37	55	34	34	44	44
11	31	68	54	63	52	41	43	41	65	40	56	36	40	41	53
12	35	73	56	65	60	50	55	55	71	41	57	41	45</		

Case# R201 R202 R203 R204 R205 R206 R207 R208 R209 R210 R211 R212 R213 R214 R215																								
1	21	4	5	10	2	8	6	2	3	5	3	16	6	6										
2	23	8	9	14	3	12	8	6	8	8	8	8	20	18	18									
3	37	10	11	20	10	19	11	7	15	19	9	10	27	21	22									
4	40	15	31	22	16	21	14	10	28	21	11	16	29	28	24									
5	43	18	35	23	29	23	24	12	29	24	16	18	31	32	29									
6	48	19	37	25	30	24	28	19	36	27	18	22	36	33	30									
7	49	34	41	31	32	42	35	20	38	31	23	27	40	34	35									
8	52	42	48	50	35	54	38	27	40	32	28	29	52	36	36									
9	54	47	55	54	37	56	42	29	49	42	31	31	55	43	41									
10	64	51	61	56	38	58	44	33	55	44	34	33	57	46	42									
11	65	57	71	60	55	62	52	34	57	53	49	38	60	51	50									
12	69	59	73	61	56	66	57	42	63	61	51	39	71	63	55									
13	75	64	75	89	64	68	58	47	65	75	52	41	78	68	58									
14	76	72	77	92	67	69	60	49	72	80	55	48	81	73	69									
15	79	73	81	93	74	71	73	58	81	88	63	51	83	74	74									
16	80	76	83	99	76	78	79	68	89	102	78	62	90	76	75									
17	82	77	85	105	78	83	86	73	91	113	82	65	95	77	91									
18	85	79	86	106	83	91	92	74	95	125	83	66	98	79	95									
19	87	83	88	107	84	98	97	75	105	127	85	70	109	80	104									
20	95	92	99	108	85	107	98	78	120	130	97	78	114	89	105									
21	98	95	107	109	87	111	99	83	127	132	105	88	117	98	125									
22	99	118	113	113	91	117	102	92	129	135	109	98	126	100	131									
23	102	120	114	115	98	125	104	94	130	137	110	114	127	103	140									
24	103	122	116	126	100	131	107	103	136	141	121	119	129	105	142									
25	109	123	118	133	119	135	112	108	137	144	122	120	131	117	143									
26	110	125	119	144	120	140	117	121	139	147	131	122	133	118	148									
27	119	130	120	148	121	141	118	128	142	155	137	133	136	121	161									
28	121	134	122	149	122	142	137	141	145	157	144	141	141	136	164									
29	133	135	123	152	129	147	139	145	148	173	148	145	149	140	166									
30	143	136	140	156	164	149	148	146	151	183	155	154	152	146	169									
31	148	147	143	158	173	155	150	151	157	186	166	155	156	147	173									
32	152	148	145	160	174	159	159	156	159	187	172	168	163	148	180									
33	155	149	146	163	178	166	162	161	165	192	174	176	173	149	181									
34	171	163	157	168	179	167	164	170	172	194	175	177	185	160	182									
35	176	167	167	181	189	168	170	175	176	196	176	186	188	166	183									
36	177	171	169	186	190	178	173	176	193	201	191	189	196	194	184									
37	187	177	171	192	193	181	179	179	199	202	195	196	197	195	189									
38	193	182	172	193	194	184	182	189	203	203	197	200	206	197	206									
39	197	184	178	194	199	189	195	193	205	204	198	201	207	201	207									
40	199	199	198	204	204	206	202	207	206	209	204	212	212	207	214									

Case# R216 R217 R218 R219 R220 R221 R222 R223 R224 R225 R226 R227 R228 R229 R230																								
1	3	4	6	4	14	8	7	6	11	4	6	2	7	5	1									
2	14	15	14	10	16	13	16	9	24	6	8	3	11	7	15									
3	19	19	22	11	18	15	19	11	30	12	10	7	12	18	21									
4	20	22	24	15	22	23	21	23	31	16	14	14	23	21	24									
5	21	25	25	20	25	29	25	24	32	24	20	22	34	27	32									
6	29	26	28	36	29	40	32	28	33	32	27	25	36	29	36									
7	30	31	29	42	38	41	34	29	40	38	35	27	41	32	38									
8	37	38	34	55	40	54	39	42	47	40	45	36	49	41	52									
9	43	76	36	62	48	58	40	45	49	57	46	42	64	42	59									
10	55	78	39	68	54	61	45	50	50	63	54	43	69	43	62									
11	57	79	48	76	57	63	46	55	52	66	55	51	72	53	71									
12	70	84	50	81	60	65	54	59	53	68	58	57	79	82	74									
13	73	87	54	83	71	78	67	63	57	70	65	61	80	84	77									
14	78	88	69	87	72	79	72	70	64	75	66	73	83	85	82									
15	94	90	75	89	91	99	73	79	73	73	73	81	67	79	87	100	84							
16	98	98	77	97	95	103	85	80	75	83	70	80	89	110	85									
17	95	103	84	99	106	104	89	89	90	91	87	82	90	123	88									
18	99	104	90	107	107	111	96	95	95	101	89	83	103	124	89									
19	112	113	94	109	110	115	105	99	100	102	92	99	105	137	94									
20	116	116	102	114	111	123	106	102	112	110	93	106	106	138	102									
21	119	124	103	115	116	127	109	105	116	117	96	119	110	139	106									
22	120	125	113	118	127	128	112	108	117	118	100	120	113	146	110									
23	124	128	118	126	130	130	116	111	120	122	101	125	114	147	113									
24	128	131	128	129	133	134	118	112	126	124	102	129	121	152	116									
25	129	134	130	133	139	135	120	123	129	133	108	142	127	153	119									
26	134	136	134	134	142	148	122	125	133	134	109	144	145	154	122									
27	136	147	136	147	145	154	126	131	135	141	119	149	147	157	123									
28	147	149	137	152	146	155	132	138	136	147	120	156	149	164	133									
29	151	151	140	154	149	158	135	140	145	151	128	161	156	166	136									
30	155	157	145	156	165																			

Case#	R261	R262	R263	R264	R265	R266	R267	R268	R269	R270	R271	R272	R273	R274	R275									
1	4	1	1	7	7	15	3	13	18	3	10	2	1	4	8									
2	5	4	5	18	11	17	5	14	24	5	18	12	11	15	19									
3	8	10	19	41	14	21	41	16	25	7	28	19	12	30	24									
4	14	16	24	47	16	26	43	21	35	21	29	27	16	38	25									
5	17	20	26	53	20	27	44	22	37	31	68	50	23	43	26									
6	18	22	30	62	30	49	47	35	43	35	71	51	32	46	48									
7	20	32	40	64	33	50	49	58	56	36	84	52	40	50	52									
8	28	33	43	68	34	51	57	62	64	39	85	59	64	58	57									
9	31	39	55	69	36	59	60	67	69	47	96	71	71	63	70									
10	38	41	60	88	42	67	61	72	71	59	98	80	74	70	71									
11	39	42	84	95	64	68	68	90	82	67	100	93	78	72	83									
12	54	48	88	100	69	74	79	97	83	84	105	97	79	78	92									
13	59	58	94	104	87	75	87	98	85	92	107	98	89	80	93									
14	65	81	100	109	89	86	89	100	94	94	111	107	91	84	105									
15	78	103	104	114	90	93	105	108	108	100	114	111	96	86	109									
16	88	106	116	117	94	94	107	116	121	110	115	116	97	97	114									
17	90	116	123	121	96	95	108	119	124	118	124	123	106	103	124									
18	92	117	125	122	97	111	109	134	125	120	126	126	116	104	136									
19	93	120	126	127	106	114	111	137	151	127	127	128	134	107	137									
20	96	131	144	128	112	115	119	145	168	136	131	137	147	123	147									
21	99	138	146	130	120	116	120	153	176	143	132	137	148	128	160									
22	103	143	148	131	126	122	141	161	180	149	135	142	157	140	163									
23	115	147	165	148	127	124	145	162	186	157	139	155	159	148	171									
24	117	148	188	152	128	131	150	163	194	158	141	163	162	154	173									
25	121	169	193	163	139	132	151	164	199	179	144	166	165	182	175									
26	125	180	198	183	142	137	155	175	200	180	150	169	173	192	178									
27	126	186	200	188	148	139	162	180	210	186	152	175	177	199	189									
28	127	189	208	201	155	152	163	181	212	190	169	179	191	202	195									
29	134	194	210	206	169	155	167	184	216	204	172	191	216	204	199									
30	147	202	211	210	172	158	168	185	218	209	180	214	217	205	200									
31	151	203	214	212	181	187	169	192	220	215	191	215	222	206	203									
32	198	213	217	218	183	201	175	194	222	216	202	229	223	210	205									
33	205	216	224	230	217	206	196	202	229	226	208	236	224	211	207									
34	206	219	230	231	224	212	208	213	236	235	216	238	226	222	233									
35	229	222	241	237	227	224	216	218	239	238	218	240	227	226	236									
36	233	234	248	238	234	228	221	228	252	242	227	242	234	227	242									
37	234	242	249	245	246	251	224	238	253	254	246	246	246	236	259									
38	245	243	250	247	246	254	252	249	240	254	256	248	256	253	237	270								
39	251	246	257	246	254	256	261	263	261	260	262	257	259	242	272									
40	259	247	263	255	263	259	264	265	264	268	268	268	264	258	273									

Case#	R276	R277	R278	R279	R280	R281	R282	R283	R284	R285	R286	R287	R288	R289	R290									
1	5	9	14	2	1	14	11	1	3	18	4	7	3	9	9									
2	9	11	21	18	21	16	13	2	9	20	30	11	9	20	12									
3	15	12	29	36	26	17	26	5	20	24	34	20	12	23	32									
4	19	18	32	37	34	18	30	12	21	26	47	25	13	27	38									
5	23	21	49	47	35	32	48	15	32	30	51	30	22	29	54									
6	26	27	51	50	39	53	53	17	35	41	62	60	24	40	55									
7	29	42	55	51	42	55	59	20	36	48	66	67	25	48	64									
8	34	49	56	58	50	56	61	23	38	49	70	71	27	57	82									
9	43	50	61	61	51	58	63	32	41	84	72	94	34	62	94									
10	56	53	66	67	53	66	64	38	42	88	80	74	70	71										
11	60	60	78	68	59	67	65	64	59	110	81	107	40	87	99									
12	72	63	83	91	65	69	70	66	61	126	82	128	71	91	114									
13	74	67	89	106	66	72	72	69	65	133	84	130	80	92	115									
14	80	74	95	113	78	73	77	76	75	135	89	132	90	102	116									
15	89	77	100	115	89	82	96	78	76	147	90	143	102	103	121									
16	91	87	113	119	98	102	97	112	79	156	101	146	108	118	128									
17	100	91	124	146	107	108	101	118	117	158	103	152	115	132	136									
18	105	92	128	148	110	113	133	119	122	162	114	161	117	156	141									
19	108	99	132	149	111	122	135	120	133	179	119	169	122	166	143									
20	111	129	141	151	116	135	140	128	139	200	125	171	151	168	151									
21	125	134	144	167	142	137	148	154	144	201	137	175	152	174	156									
22	131	144	162	174	145	139	157	173	145	213	138	177	155	176	159									
23	136	154	166	192	152	140	159	187	148	214	140	189	156	179	161									
24	137	155	177	200	164	146	163	188	158	215	144	192	160	181	170									
25	161	163	195	208	167	147	164	193	159	216	151	194	165	185	180									
26	182	170	196	212	180	154	169	194	164	226	183	192	167	188	207									
27	184	177	205	214	189	163	181	203	178	229	195	205	194	199	210									
28	189	179	213	220	190	169	184	205	187	230	198	213	195	206	230									
29	196	182	216	221	200	180	193	206	199	236	202	220	204	215	231									
30	200	190	225	222	201	182	194	226	200	237	203	221	233	218	257									
31	204	206	229	228	211	187	199	235	205	243	205	222	238	258	259									
32	215	209	233	237	218	192	218	237	206	251	209													

Case# R376 R377 R378 R379 R380 R381 R382 R383 R384 R385 R386 R387 R388 R389 R390

1	22	3	11	27	3	6	9	2	6	38	21	25	27	5	2
2	36	15	32	29	26	28	18	3	9	44	49	84	30	14	3
3	44	16	35	30	33	54	38	7	22	49	54	93	43	26	8
4	56	17	36	58	36	61	45	40	25	51	57	94	55	28	11
5	76	23	42	72	42	69	46	46	28	53	66	95	80	30	35
6	77	27	43	82	53	71	67	55	30	54	75	102	81	38	47
7	82	35	57	84	60	73	72	62	40	61	99	107	83	55	54
8	88	36	89	94	68	78	100	63	70	63	106	127	91	71	55
9	96	44	92	95	94	82	102	75	73	82	116	136	93	97	69
10	97	54	94	101	98	92	114	81	81	98	129	137	104	104	80
11	112	65	103	114	103	111	115	85	109	118	135	165	114	106	99
12	122	73	112	134	116	152	116	90	110	120	146	174	124	112	112
13	144	95	118	138	118	154	122	105	120	136	148	177	141	137	115
14	145	102	123	146	126	159	127	118	124	160	159	190	152	143	118
15	155	120	127	156	134	163	132	128	130	161	178	210	166	159	129
16	165	130	143	159	138	165	140	132	137	162	187	218	174	172	130
17	174	135	151	177	146	168	158	156	139	185	188	237	178	173	141
18	176	136	161	185	159	171	162	161	143	189	207	244	181	190	179
19	183	143	162	187	160	192	163	162	178	197	212	245	188	192	187
20	184	149	165	195	161	201	168	171	186	199	217	251	193	193	193
21	194	151	175	203	163	226	171	174	194	206	221	261	200	202	202
22	202	153	179	204	172	231	175	184	206	218	224	266	203	219	220
23	209	176	186	210	193	237	197	189	214	243	227	270	230	222	221
24	216	182	201	222	217	240	214	193	227	246	229	276	239	231	230
25	219	189	219	230	218	249	216	221	233	251	238	284	242	238	233
26	221	191	240	235	244	254	236	224	238	254	250	302	262	239	253
27	229	200	266	236	248	278	257	235	242	255	257	305	279	241	271
28	237	218	272	242	259	279	260	244	263	258	261	311	282	275	276
29	240	229	273	259	265	287	268	245	281	268	269	313	286	321	299
30	243	273	291	267	292	295	269	252	294	279	279	314	289	323	306
31	252	299	293	277	301	297	276	257	302	280	286	319	290	332	312
32	256	309	308	279	311	305	279	265	319	282	297	330	306	341	323
33	257	322	310	291	315	312	288	284	320	288	300	333	322	342	335
34	258	332	324	295	317	314	297	289	329	294	303	341	338	354	347
35	296	334	327	303	322	319	305	330	331	315	305	349	339	361	350
36	302	340	344	304	330	330	306	332	344	324	317	352	343	363	351
37	314	343	349	305	331	336	307	336	347	331	326	359	344	371	359
38	350	361	350	313	335	338	313	350	360	342	333	368	374	375	360
39	356	368	362	359	365	340	325	370	383	356	342	380	387	376	368
40	357	369	373	368	376	378	375	377	384	371	374	381	388	389	375

Case# R391 R392 R393 R394 R395 R396 R397 R398 R399 R400

1	6	2	28	12	22	5	18	1	2	6
2	15	13	57	20	26	21	26	12	11	16
3	17	17	59	25	35	41	31	15	19	18
4	43	20	63	44	38	44	41	16	20	22
5	59	26	67	60	55	46	49	17	49	23
6	69	46	81	62	86	54	57	21	84	30
7	75	61	88	63	109	63	58	29	88	31
8	95	65	92	69	135	69	79	47	108	43
9	98	86	99	76	138	79	81	49	123	72
10	116	89	114	90	144	86	92	53	151	79
11	124	99	119	96	153	118	96	54	158	90
12	134	100	132	102	156	121	120	64	172	103
13	135	117	138	118	173	122	136	65	190	108
14	155	132	152	144	180	162	140	70	193	124
15	172	156	158	152	182	169	159	76	199	142
16	174	169	174	161	189	176	187	80	204	143
17	180	174	205	171	195	181	196	81	209	150
18	181	184	210	175	199	187	199	95	213	168
19	184	218	232	185	204	204	203	109	220	178
20	185	220	234	186	211	213	209	126	228	192
21	195	238	245	212	217	233	223	128	230	200
22	197	257	247	222	234	239	226	134	232	214
23	198	262	258	232	238	243	231	136	234	221
24	204	268	264	237	262	244	234	151	236	227
25	212	269	265	243	264	265	271	160	245	228
26	217	276	266	261	270	278	274	163	260	243
27	230	291	269	263	277	279	287	181	270	248
28	240	309	275	268	289	297	294	193	276	262
29	243	311	280	277	292	301	302	202	280	267
30	249	325	288	285	293	309	307	236	296	276
31	252	339	289	289	315	311	318	251	300	280
32	254	349	290	293	345	312	320	259	320	286
33	268	350	297	311	346	324	324	280	330	310
34	278	351	298	334	351	325	340	298	335	312
35	280	357	306	344	357	326	362	299	339	321
36	308	362	314	361	365	356	363	301	353	340
37	338	373	317	364	376	388	370	315	356	372
38	354	374	324	370	377	389	381	349	375	383
39	370	377	334	382	382	390	382	380	385	395
40	377	385	392	383	388	393	397	394	393	397

Appendix C

Southern Africa Consortium for Monitoring Educational Quality and International Institute for Educational Planning

Grade 6 Reading Study

Pupil Name Form

Country	<input type="text"/>	<input type="text"/>	<input type="text"/>
Region	<input type="text"/>	<input type="text"/>	
District	<input type="text"/>	<input type="text"/>	
School	<input type="text"/>	<input type="text"/>	<input type="text"/>
Instrument	<input type="text" value="5"/>		

This form is to be completed by Data Collectors.

Name of School: _____

ID Number Col. 1	Name of Pupil Col. 2	Class (6A, 6B, etc.) Col. 3	Shift (morning, afternoon) Col. 4	Date of Birth (D/M/Y) Col. 5	Sex (M/F) Col. 6	Session 1 taken (Y/N) Col. 7	Session 2 taken (Y/N) Col. 8	Remarks Col. 9	Administered code Col. 10
01									
02									
03									
04									
05									
06									
07									
08									
09									
10									
11									
12									
13									
14									
15									
16									
17									
18									
19									
20									