

SURVEY INTRODUCTION

- Household Income Survey (HIS) first implemented in 1973 and last in 2016.
- Basic Amenities Survey (BA) conducted with HIS in 1987 and aimed at obtain the information on basic amenities enjoyed by households.
- Household Expenditure Survey (HES) first implemented in 1957/58. The last survey was conducted in 2016.
- HIS/BA was conducted twice in every five years as input to government and user, while HES implemented every five years.
- In line with the government's current needs and requirements to evaluate the effectiveness of policy programme and strategies, HIS/BA and HES become the essential inputs needed in the short period.
- Hence, for 2014, 2016 and 2019 this two survey are combined and conduct simultaneously known as Household Income, Expenditure and Basic Amenities Survey (HIES/BA).

OBJECTIVES OF THE SURVEY

1

To gather information on the income distribution and consumption patterns of household

2

To identify target groups such as B40 and poor household

3

To measure accessibility of basic amenities enjoyed by the household

4

To use expenditure data as an inputs for Consumer Price Index weight



DEPARTMENT OF STATISTICS MALAYSIA
Block C6, Complex C
Federal Government Administrative Centre,
62514 Putrajaya



Phone : 03-8885 7000



Fax : 03-8888 9248



Email : jpbkkip@dosc.gov.my



Website : <https://www.dosc.gov.my>

Household Income, Expenditure and Basic Amenities Survey (HIES/BA) 2019 will be implemented for 12 month from the period 1 January 2019 until 31 December 2019
Any enquiries or more information, please contact the Department of Statistics Malaysia



Household Income, Expenditure and Basic Amenities Survey (HIES/BA) 2019



Household in Selected Residential



All Districts in Malaysia



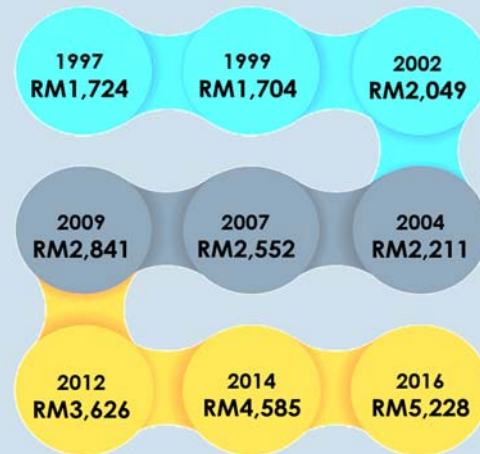
Urban and Rural Areas

January – December 2019

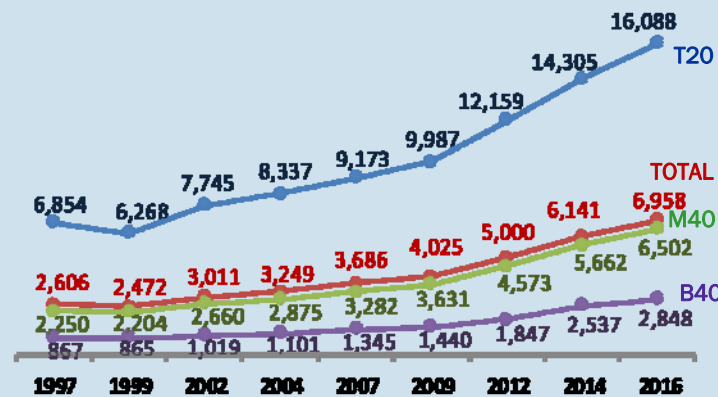
INPUT SURVEY TO NATIONAL DEVELOPMENT PLANS

Year of Survey HIS	Input to	Year of Survey HES	Name of Survey
1970	2MP	1957/58	Household Budget Survey, Federation of Malaya
1974	3MP	1967/68	Household Budget Survey, Sarawak
1976	4MP	1968/69	Household Budget Survey, Sabah
1979	Mid - Term Review(MTR), 4MP	1973	HES
1984	5MP	1980	HES (Peninsular Malaysia)
1987	MTR, 5MP	1982	HES (Sabah and Sarawak)
1989	6MP	1990	HES
1992	MTR, 6MP	1993/94	HES
1995	6MP, MTR	1995	HES (Selected cities)
1997	MTR, 7MP	1998/99	HES
1999	MTR, 7MP	2004/05	HES
2002	8MP	2009/10	HES
2004	MTR, 8MP	2014/15	Household Income and Expenditure Survey(HIES)
2007	9MP	2016	HIES
2009	MTR, 9MP	2019	HIES
2012	MTR, 9MP		
2014/2015	10MP		
2016	11MP		
2019	MTR, 11MP		

MONTHLY MEDIAN INCOME OF HOUSEHOLD, MALAYSIA



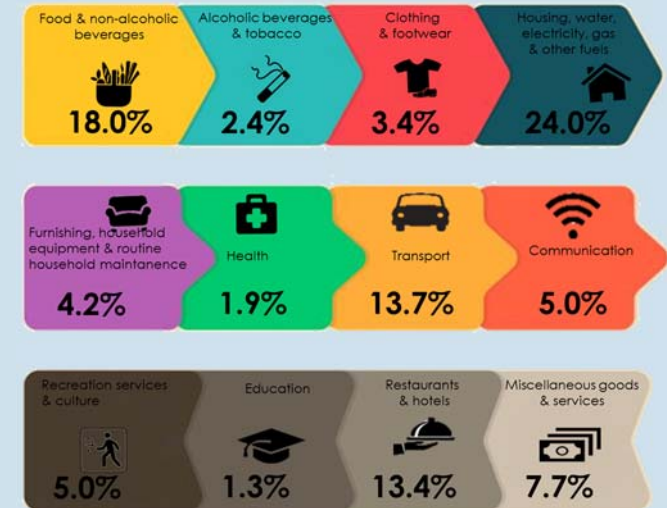
MONTHLY MEAN INCOME OF HOUSEHOLD (RM), MALAYSIA



INCIDENCE OF POVERTY (%), MALAYSIA



HOUSEHOLD EXPENDITURE BY MAIN GROUP OF GOOD AND SERVICES, MALAYSIA, 2016



SELECTED TARGETS MID - TERM REVIEW, ELEVENTH MALAYSIA PLAN (MTR, 11MP)

	HIES 2016 Findings	MTR, 11MP Target
Monthly Mean Income of Household	RM6,958	RM8,960
Monthly Mean Income of Household B40	RM2,848	RM4,430
Monthly Median Income of Household B40	RM3,000	RM4,790
Gini Coefficient (the income gap of high and low income households)	0.399	0.385

HOUSEHOLD EQUIPMENT OWNERSHIP, MALAYSIA, 2016

